

Data Path : Z:\VOASRV\HPCHEM1\MSVOA D\DATA\VD060820\
 Data File : VD065784.D
 Acq On : 08 Jun 2020 16:53
 Operator : VA/SY
 Sample : L2924-01RE
 Misc : 3.87G/5.00ml/MSVOA D/SOIL
 ALS Vial : 11 Sample Multiplier: 1

Instrument :
 MSVOA_D
 ClientSampleId :

Quant Time: Jun 09 06:25:00 2020
 Quant Method : Z:\VOASRV\HPCHEM1\MSVOA_D\METHOD\82D060520S.M
 Quant Title : SW846 8260
 QLast Update : Fri Jun 05 13:07:30 2020
 Response via : Initial Calibration

Internal Standards	R.T.	QIon	Response	Conc	Units	Dev(Min)
1) Pentafluorobenzene	7.98	168	184503	50.00	ug/l	0.00
34) 1,4-Difluorobenzene	8.87	114	370890	50.00	ug/l	0.00
63) Chlorobenzene-d5	11.65	117	343746	50.00	ug/l	0.00
72) 1,4-Dichlorobenzene-d4	13.58	152	160838	50.00	ug/l	0.00

System Monitoring Compounds

33) 1,2-Dichloroethane-d4	8.34	65	143088	78.48	ug/l	0.00
Spiked Amount	50.000		Recovery	=	156.96%	
35) Dibromofluoromethane	7.92	113	128757	54.96	ug/l	0.00
Spiked Amount	50.000		Recovery	=	109.92%	
50) Toluene-d8	10.34	98	462321	52.92	ug/l	0.00
Spiked Amount	50.000		Recovery	=	105.84%	
62) 4-Bromofluorobenzene	12.64	95	151680	51.20	ug/l	0.00
Spiked Amount	50.000		Recovery	=	102.40%	

Target Compounds

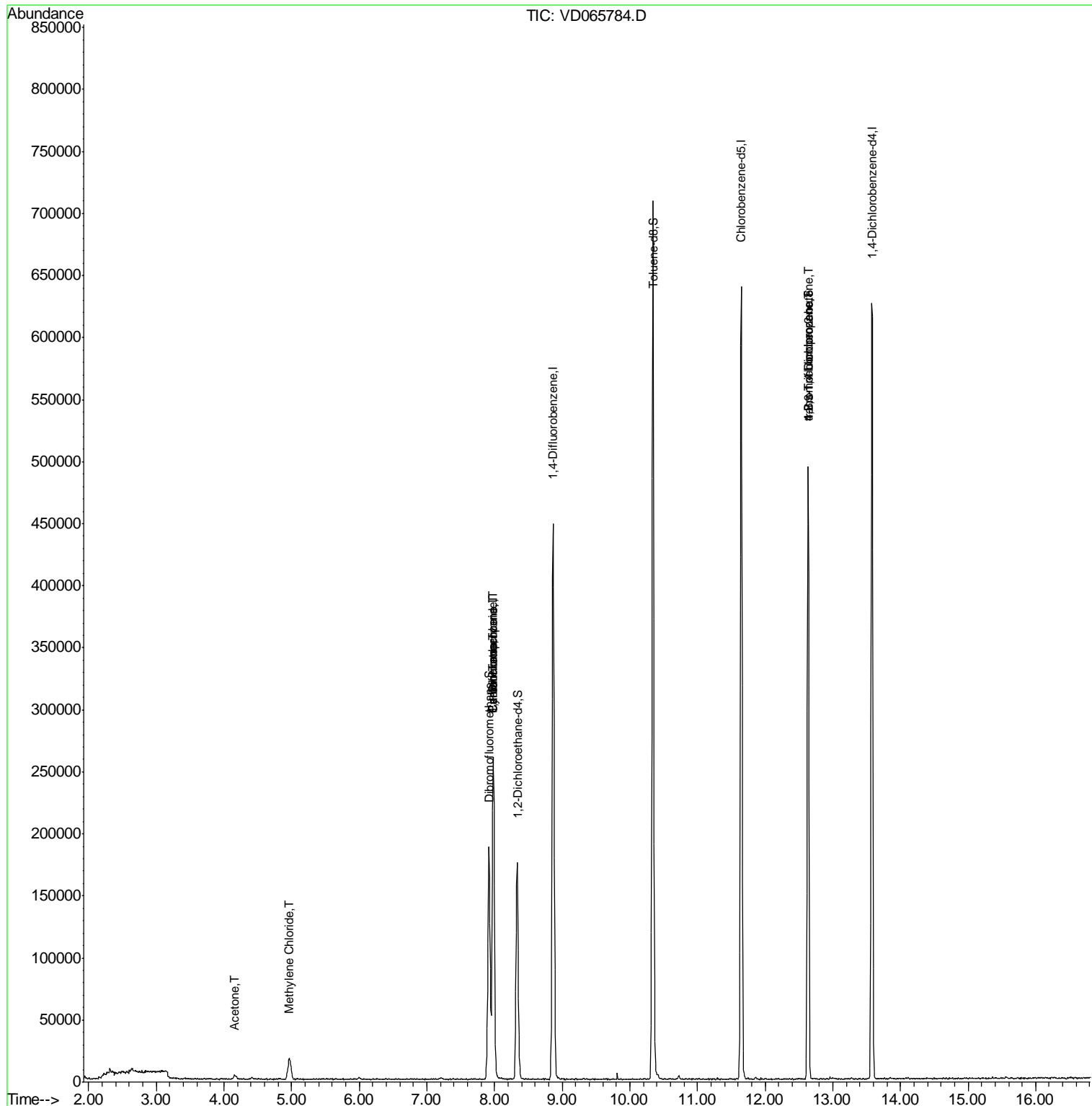
					Qvalue
2) Dichlorodifluoromethane	1.99	85	126	Below Cal	# 42
3) Chloromethane	2.20	50	235	Below Cal	# 35
11) Tert butyl alcohol	5.23	59	54	Below Cal	# 74
16) Acetone	4.16	43	6061	17.624	ug/l 96
18) Methyl Acetate	4.64	43	78	Below Cal	# 52
20) Methylene Chloride	4.96	84	12475	2.614	ug/l # 82
31) Cyclohexane	7.98	56	5417	1.657	ug/l # 45
36) 1,1-Dichloropropene	7.98	75	17455	4.913	ug/l # 49
38) Carbon Tetrachloride	7.98	117	19641	5.253	ug/l # 16
76) 1,2,3-Trichloropropane	12.64	75	83633	66.860	ug/l # 100
81) trans-1,4-Dichloro-2-buten	12.64	75	83633	144.460	ug/l # 9

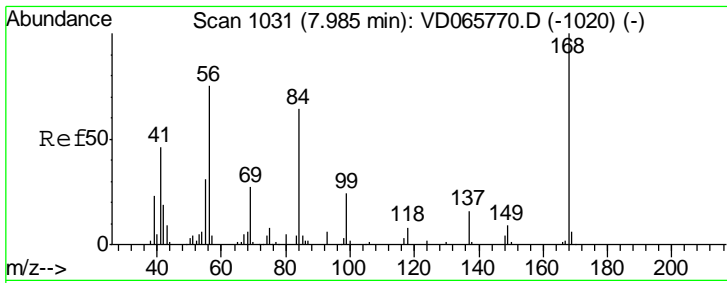
(#) = qualifier out of range (m) = manual integration (+) = signals summed

Data Path : Z:\VOASRV\HPCHEM1\MSVOA D\DATA\VD060820\
 Data File : VD065784.D
 Acq On : 08 Jun 2020 16:53
 Operator : VA/SY
 Sample : L2924-01RE
 Misc : 3.87G/5.00ml/MSVOA D/SOIL
 ALS Vial : 11 Sample Multiplier: 1

Instrument :
 MSVOA_D
 ClientSampleID :

Quant Time: Jun 09 06:25:00 2020
 Quant Method : Z:\VOASRV\HPCHEM1\MSVOA_D\METHOD\82D060520S.M
 Quant Title : SW846 8260
 QLast Update : Fri Jun 05 13:07:30 2020
 Response via : Initial Calibration

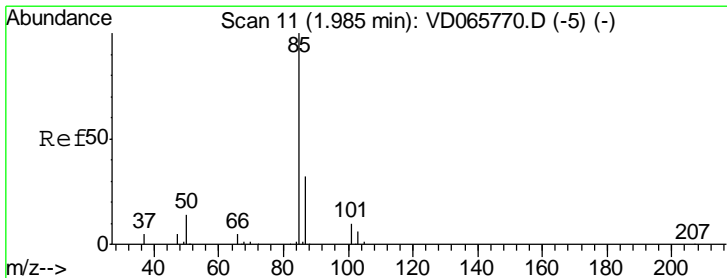
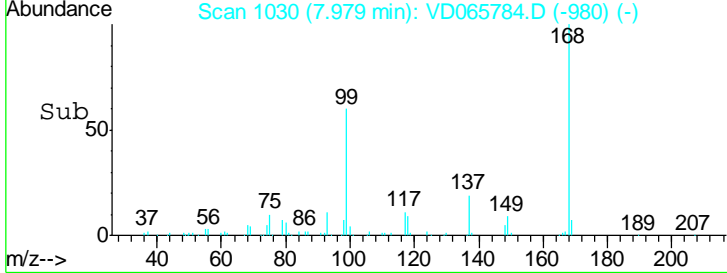
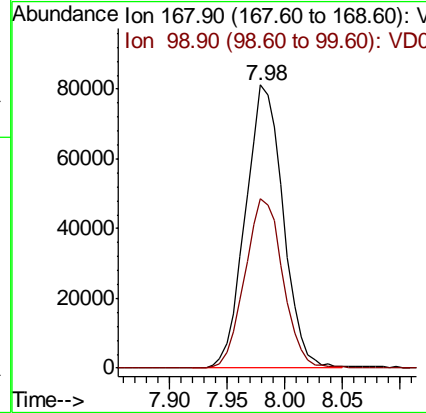
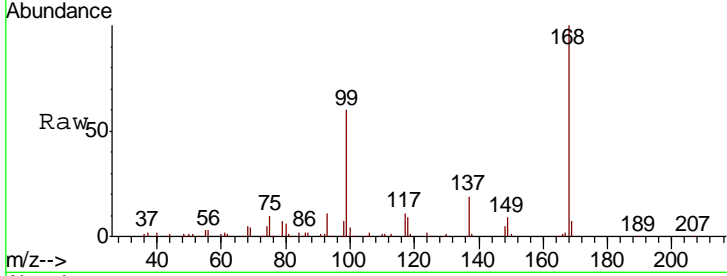




#1
 Pentafluorobenzene
 Concen: 50.000 ug/l
 RT: 7.98 min Scan# 1030
 Delta R.T. -0.01 min
 Lab File: VD065784.D
 Acq: 08 Jun 2020 16:53

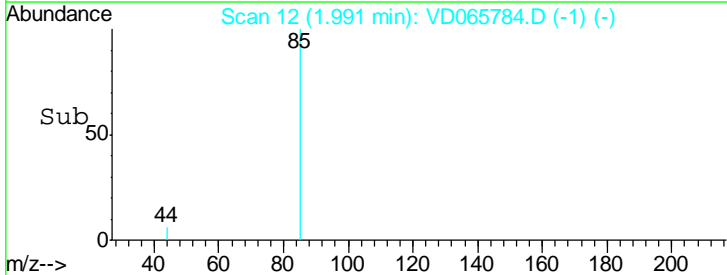
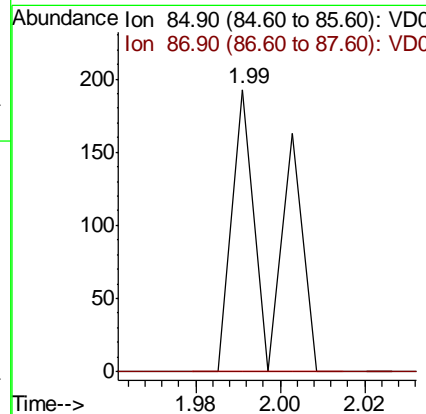
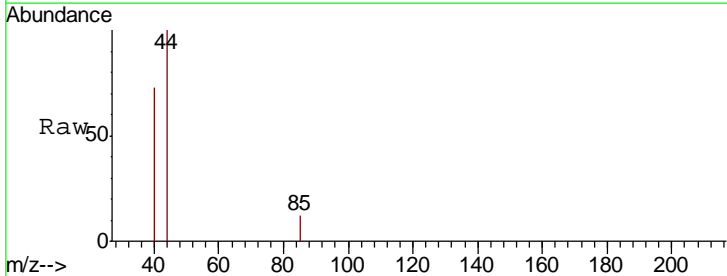
Instrument :
 MSVOA_D
 ClientSampled :

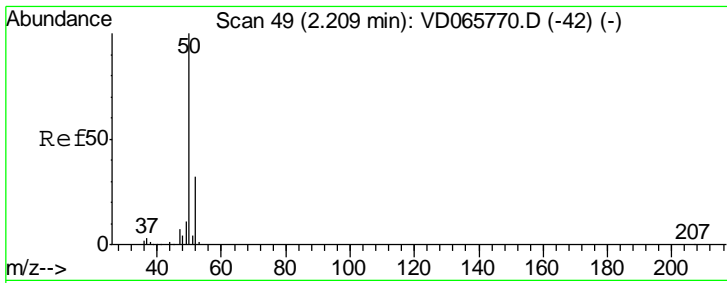
Tgt Ion: 168 Resp: 184503
 Ion Ratio Lower Upper
 168 100
 99 59.9 45.3 67.9



#2
 Dichlorodifluoromethane
 Concen: Below Cal
 RT: 1.99 min Scan# 12
 Delta R.T. 0.01 min
 Lab File: VD065784.D
 Acq: 08 Jun 2020 16:53

Tgt Ion: 85 Resp: 126
 Ion Ratio Lower Upper
 85 100
 87 0.0 16.2 48.5#

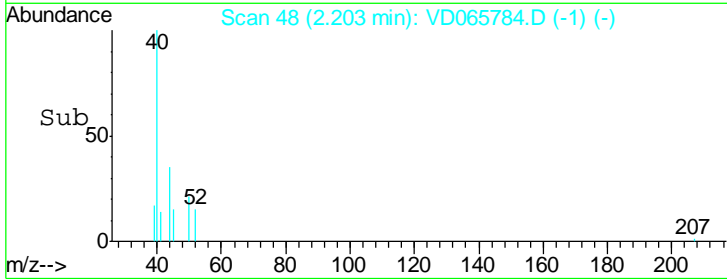
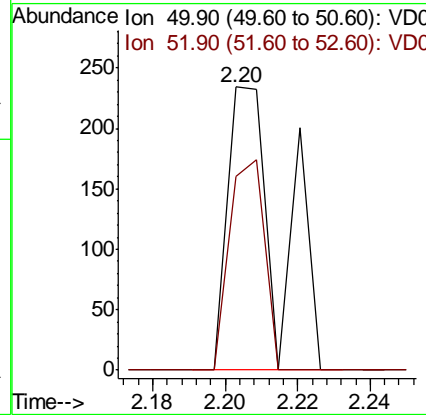
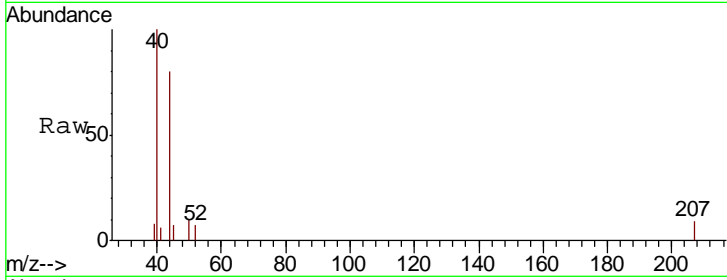




#3
 Chloromethane
 Concen: Below Cal
 RT: 2.20 min Scan# 48
 Delta R.T. -0.01 min
 Lab File: VD065784.D
 Acq: 08 Jun 2020 16:53

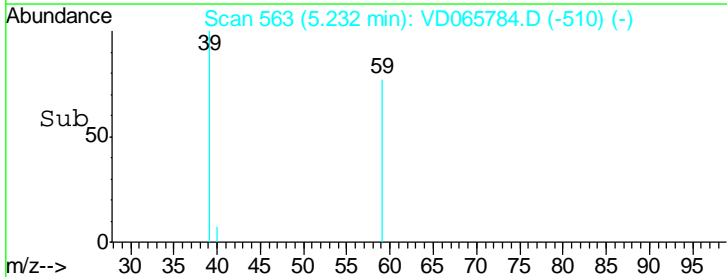
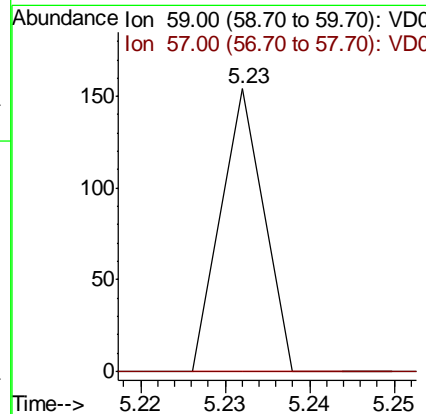
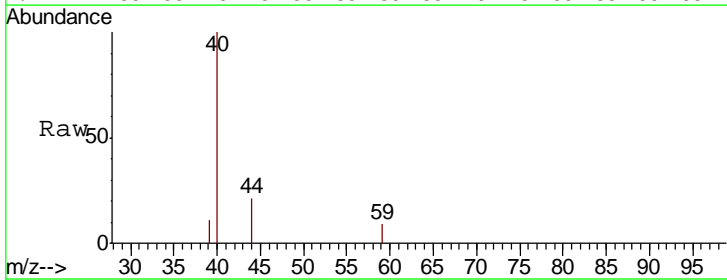
Instrument :
 MSVOA_D
 ClientSampled :

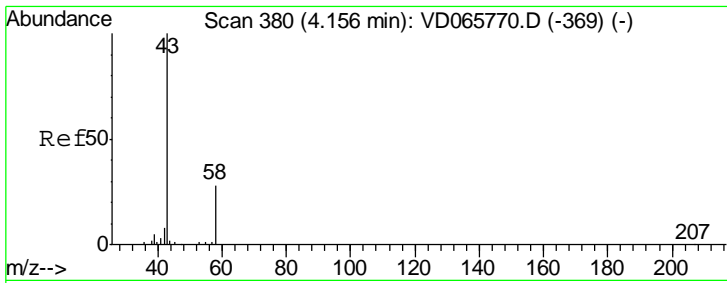
Tgt Ion	Resp	Lower	Upper
50	100		
52	68.4	25.6	38.4#



#11
 Tert butyl alcohol
 Concen: Below Cal
 RT: 5.23 min Scan# 563
 Delta R.T. 0.01 min
 Lab File: VD065784.D
 Acq: 08 Jun 2020 16:53

Tgt Ion	Resp	Lower	Upper
59	100		
57	0.0	7.5	11.3#

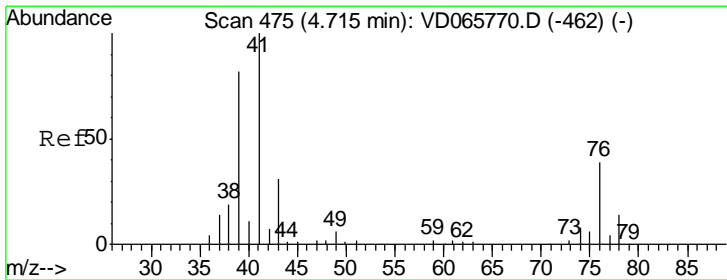
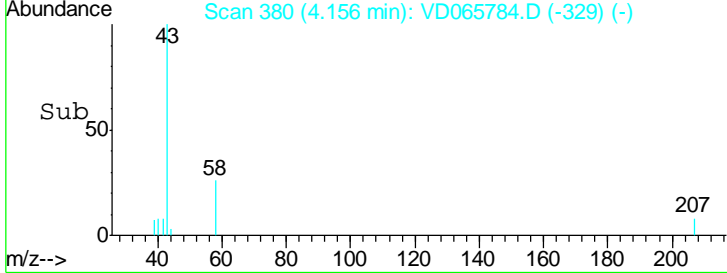
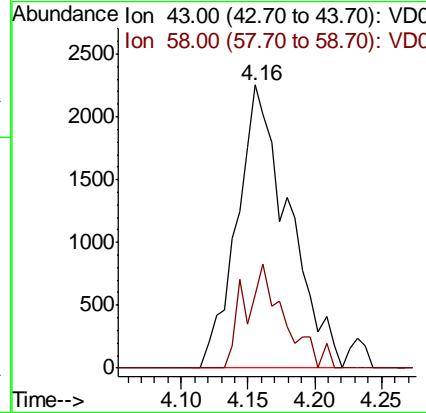
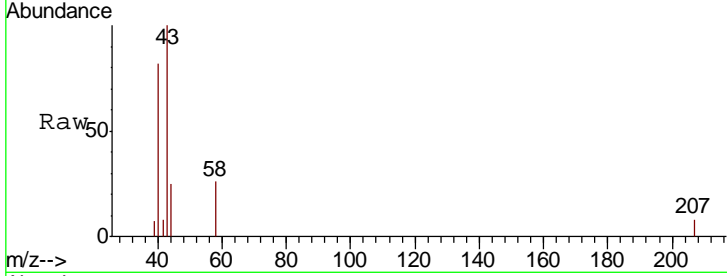




#16
 Acetone
 Concen: 17.624 ug/l
 RT: 4.16 min Scan# 380
 Delta R.T. -0.00 min
 Lab File: VD065784.D
 Acq: 08 Jun 2020 16:53

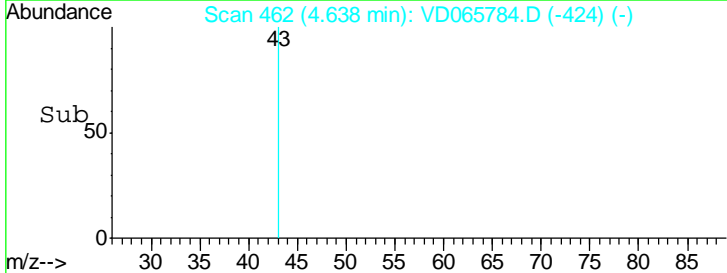
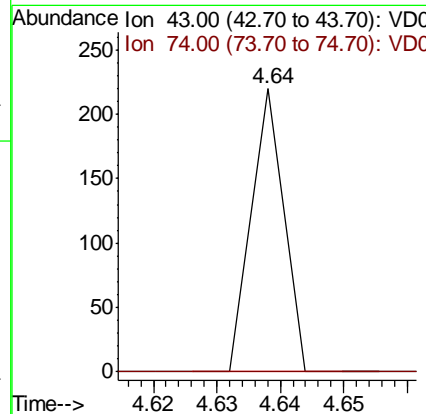
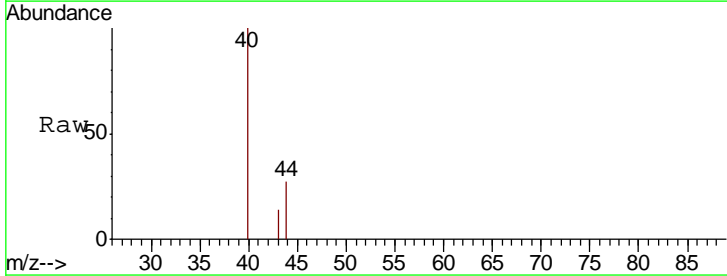
Instrument :
 MSVOA_D
 ClientSampled :

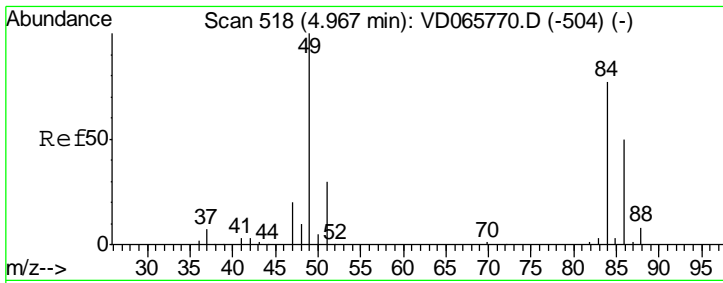
Tgt Ion	Resp	Lower	Upper
43	100		
58	25.8	22.3	33.5



#18
 Methyl Acetate
 Concen: Below Cal
 RT: 4.64 min Scan# 462
 Delta R.T. -0.08 min
 Lab File: VD065784.D
 Acq: 08 Jun 2020 16:53

Tgt Ion	Resp	Lower	Upper
43	100		
74	0.0	18.7	28.1#

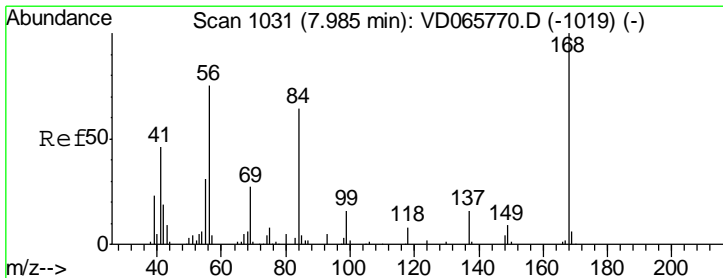
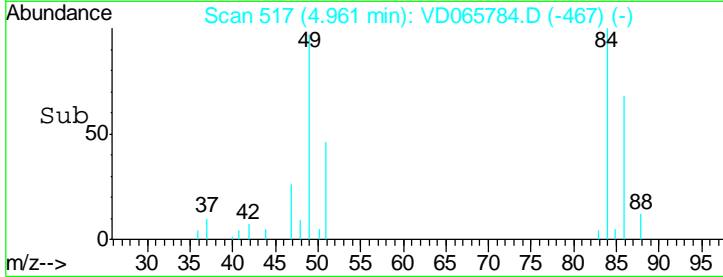
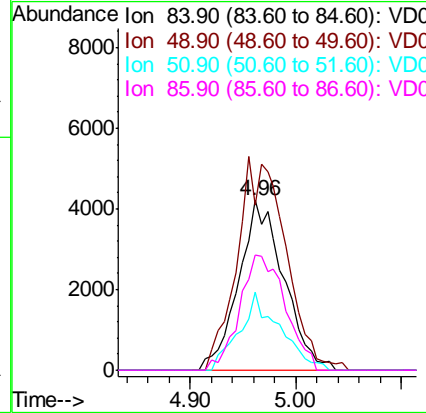
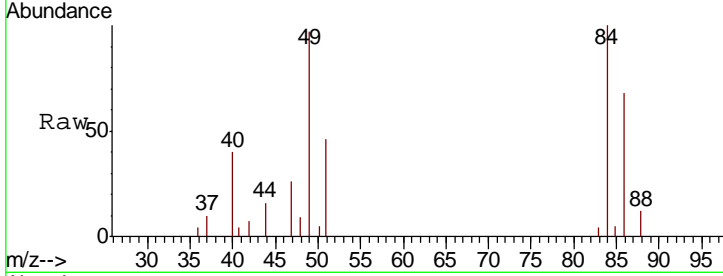




#20
 Methylene Chloride
 Concen: 2.614 ug/l
 RT: 4.96 min Scan# 517
 Delta R.T. -0.01 min
 Lab File: VD065784.D
 Acq: 08 Jun 2020 16:53

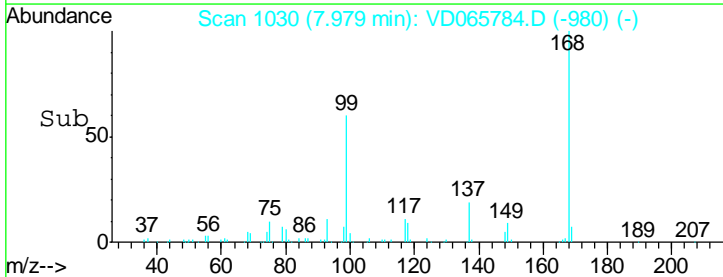
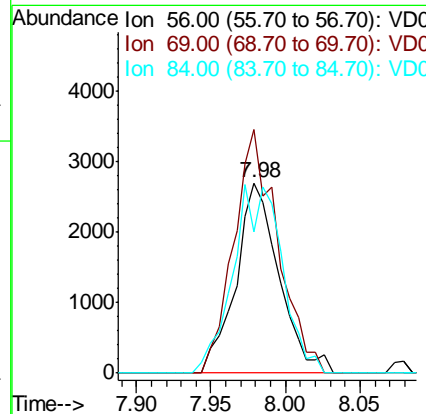
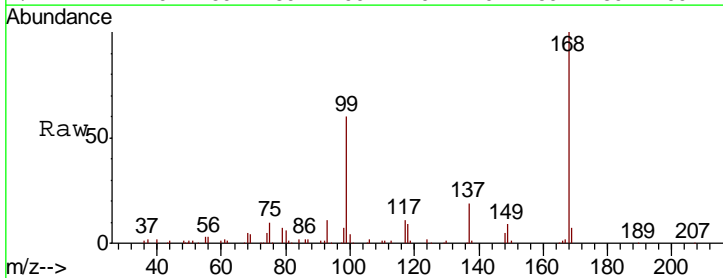
Instrument :
 MSVOA_D
 ClientSampled :

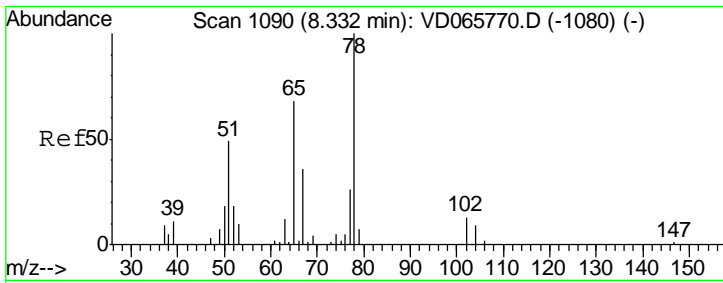
Tgt Ion	Resp	Lower	Upper
84	12475		
49	97.2	103.4	155.0#
51	45.7	31.4	47.2
86	68.2	51.7	77.5



#31
 Cyclohexane
 Concen: 1.657 ug/l
 RT: 7.98 min Scan# 1030
 Delta R.T. -0.01 min
 Lab File: VD065784.D
 Acq: 08 Jun 2020 16:53

Tgt Ion	Resp	Lower	Upper
56	5417		
69	128.1	28.5	42.7#
84	74.1	68.4	102.6

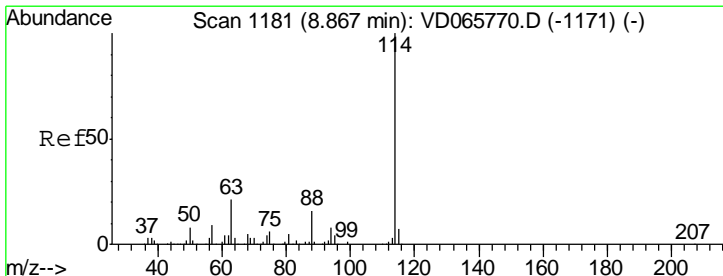
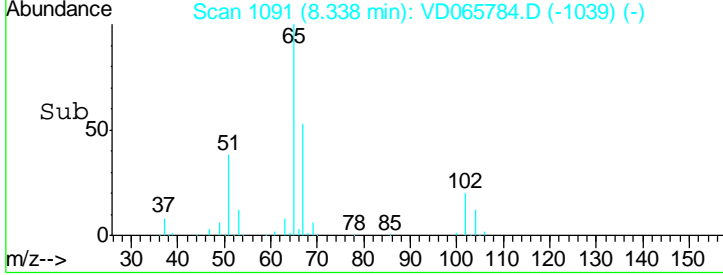
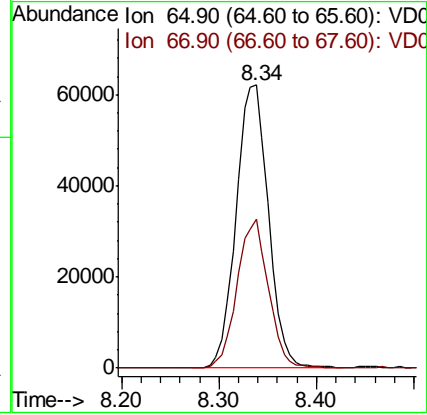
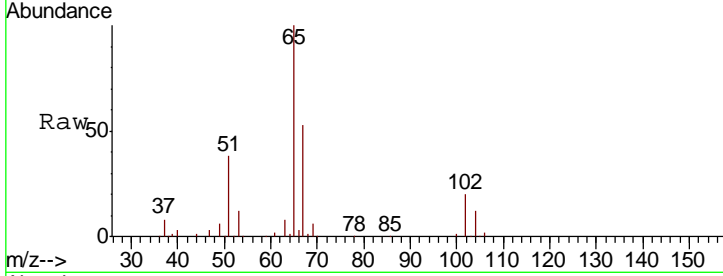




#33
 1,2-Dichloroethane-d4
 Concen: 78.485 ug/l
 RT: 8.34 min Scan# 1091
 Delta R.T. 0.01 min
 Lab File: VD065784.D
 Acq: 08 Jun 2020 16:53

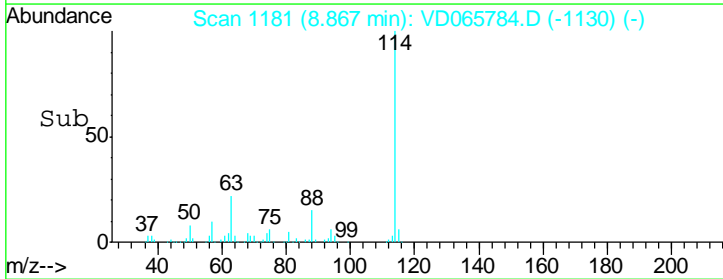
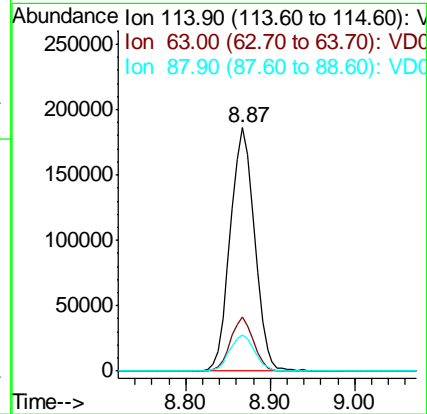
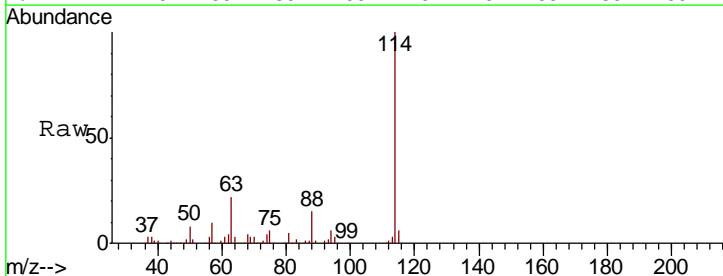
Instrument :
 MSVOA_D
 ClientSampled :

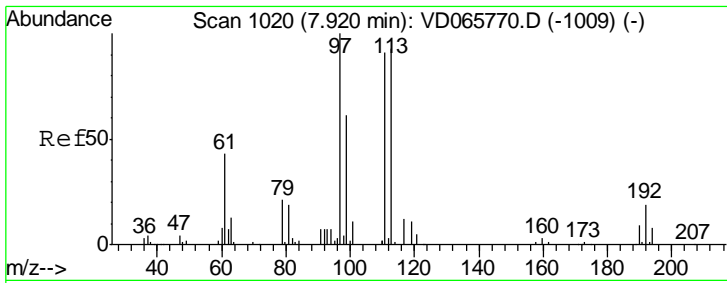
Tgt Ion	Resp	Lower	Upper
65	100		
67	51.1	0.0	103.6



#34
 1,4-Difluorobenzene
 Concen: 50.000 ug/l
 RT: 8.87 min Scan# 1181
 Delta R.T. -0.00 min
 Lab File: VD065784.D
 Acq: 08 Jun 2020 16:53

Tgt Ion	Resp	Lower	Upper
114	100		
63	22.1	0.0	41.8
88	14.9	0.0	32.0

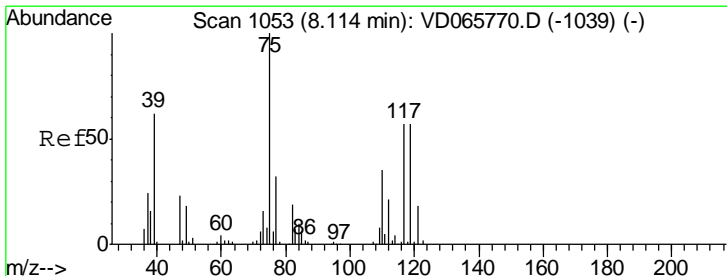
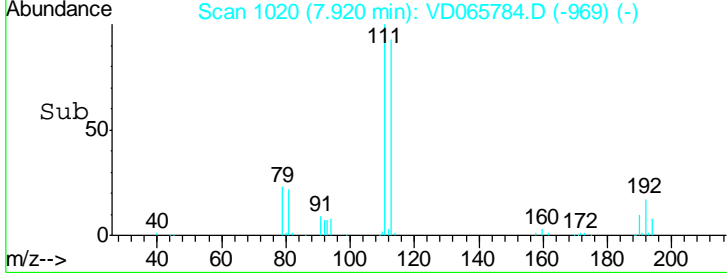
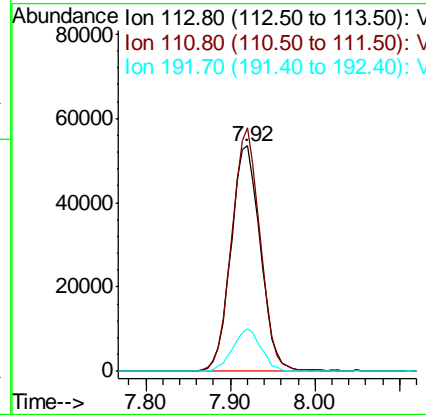
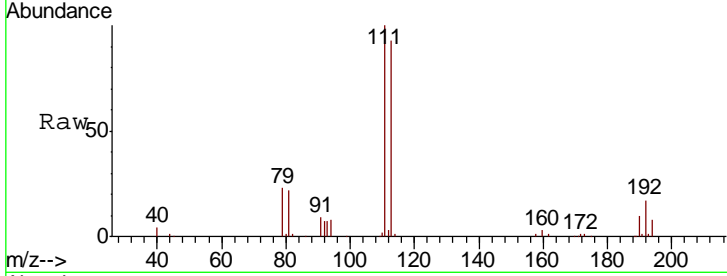




#35
 Dibromofluoromethane
 Concen: 54.959 ug/l
 RT: 7.92 min Scan# 1020
 Delta R.T. -0.00 min
 Lab File: VD065784.D
 Acq: 08 Jun 2020 16:53

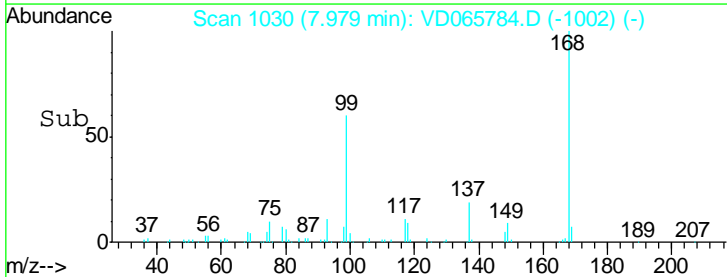
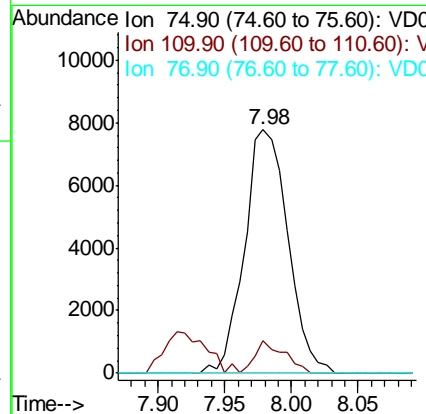
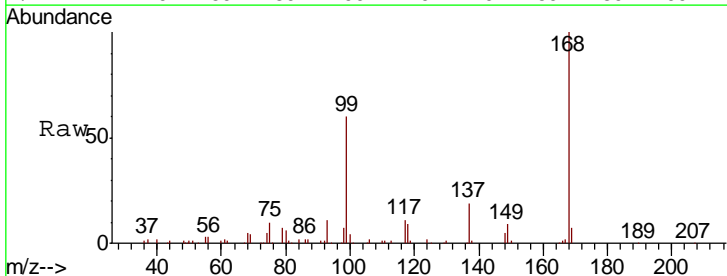
Instrument :
 MSVOA_D
 ClientSampled :

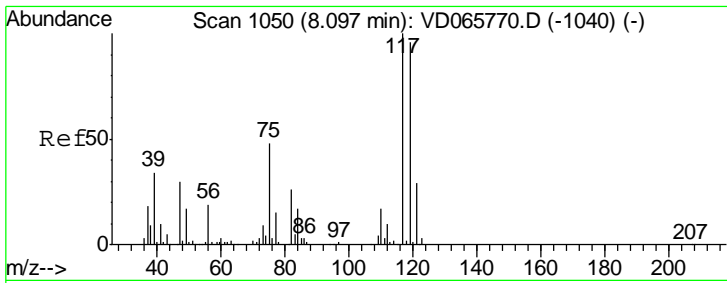
Tgt Ion	Resp	Lower	Upper
113	128757		
111	103.3	83.4	125.0
192	18.2	15.7	23.5



#36
 1,1-Dichloropropene
 Concen: 4.913 ug/l
 RT: 7.98 min Scan# 1030
 Delta R.T. -0.14 min
 Lab File: VD065784.D
 Acq: 08 Jun 2020 16:53

Tgt Ion	Resp	Lower	Upper
75	17455		
110	8.9	17.6	52.8#
77	0.0	25.1	37.7#

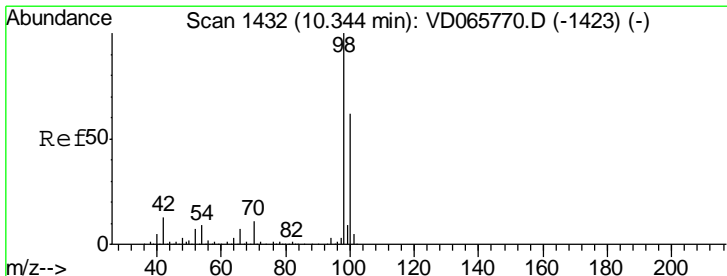
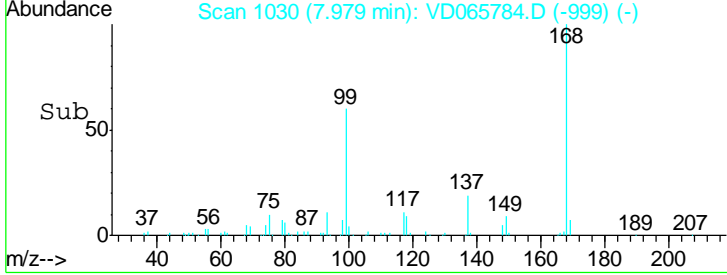
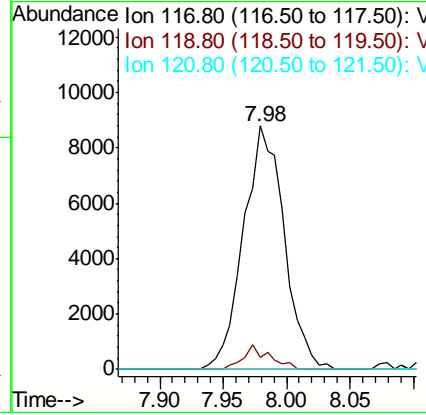
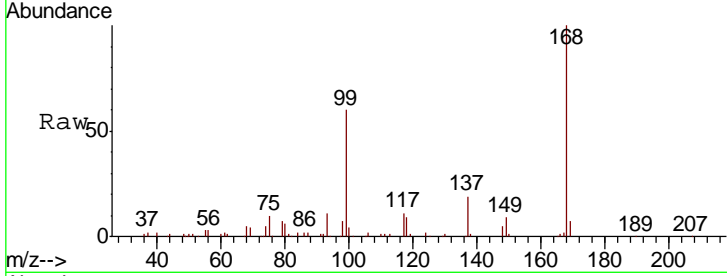




#38
 Carbon Tetrachloride
 Concen: 5.253 ug/l
 RT: 7.98 min Scan# 1030
 Delta R.T. -0.12 min
 Lab File: VD065784.D
 Acq: 08 Jun 2020 16:53

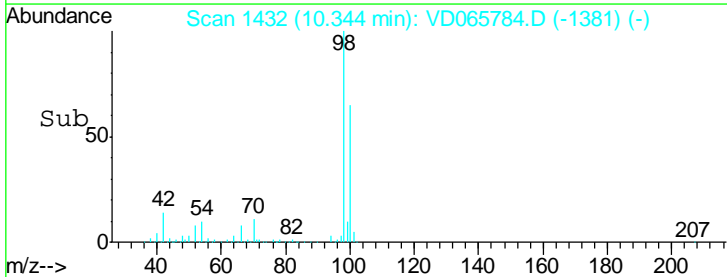
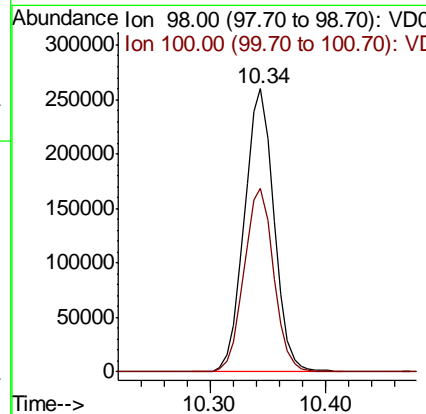
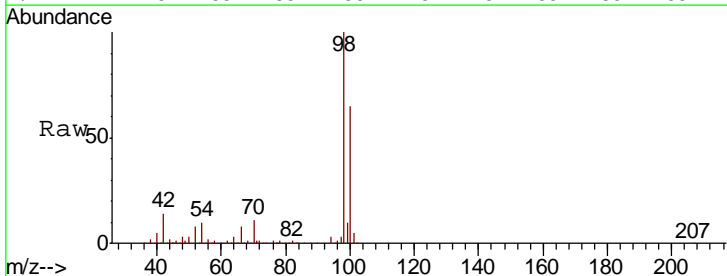
Instrument :
 MSVOA_D
 ClientSampled :

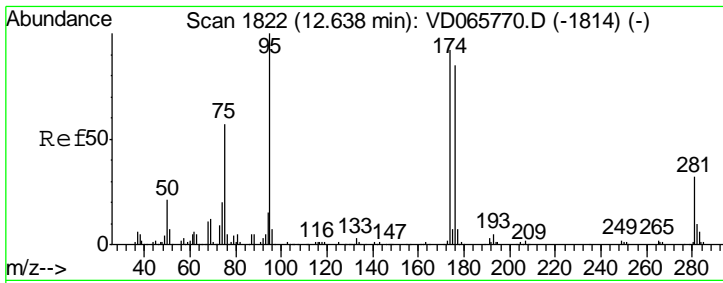
Tgt Ion	Resp	Lower	Upper
117	19641		
119	5.0	76.8	115.2#
121	0.0	23.4	35.2#



#50
 Toluene-d8
 Concen: 52.922 ug/l
 RT: 10.34 min Scan# 1432
 Delta R.T. -0.00 min
 Lab File: VD065784.D
 Acq: 08 Jun 2020 16:53

Tgt Ion	Resp	Lower	Upper
98	462321		
100	65.1	51.4	77.2

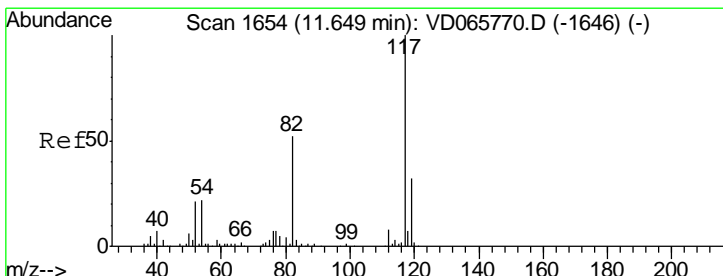
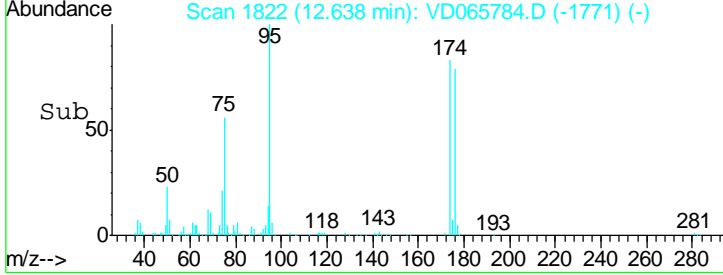
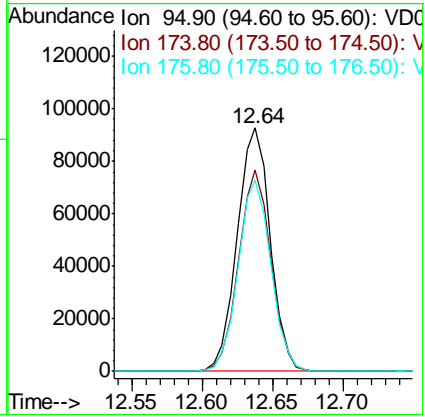
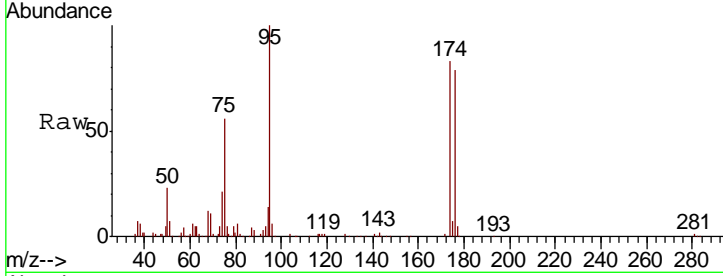




#62
 4-Bromofluorobenzene
 Concen: 51.198 ug/l
 RT: 12.64 min Scan# 1822
 Delta R.T. -0.00 min
 Lab File: VD065784.D
 Acq: 08 Jun 2020 16:53

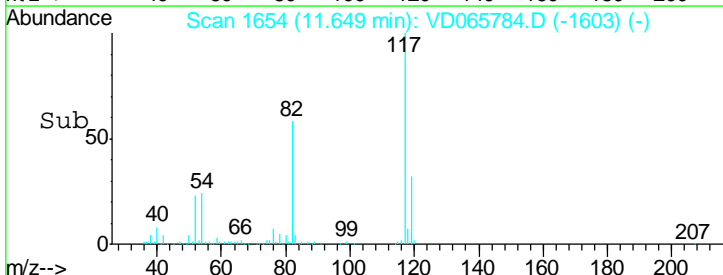
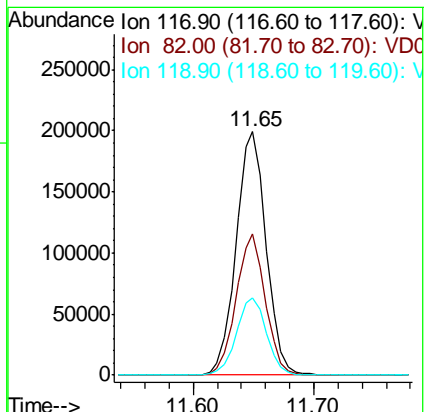
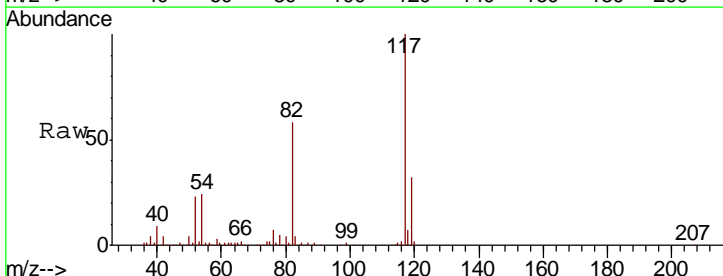
Instrument :
 MSVOA_D
 ClientSampled :

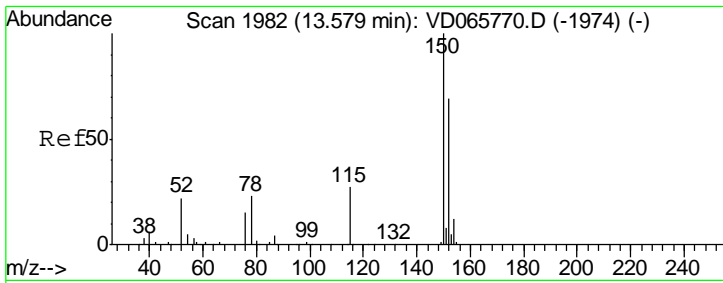
Tgt Ion	Resp	Lower	Upper
95	151680		
174	81.0	0.0	175.2
176	78.2	0.0	163.0



#63
 Chlorobenzene-d5
 Concen: 50.000 ug/l
 RT: 11.65 min Scan# 1654
 Delta R.T. -0.00 min
 Lab File: VD065784.D
 Acq: 08 Jun 2020 16:53

Tgt Ion	Resp	Lower	Upper
117	343746		
82	57.9	41.9	62.9
119	32.0	25.3	37.9

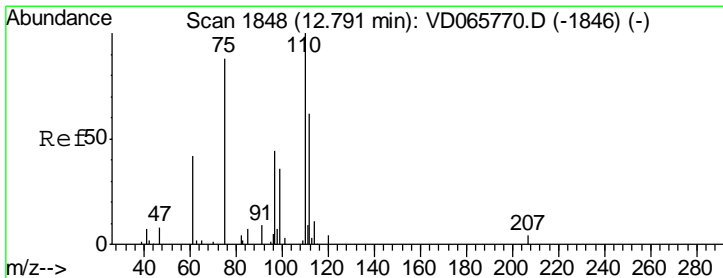
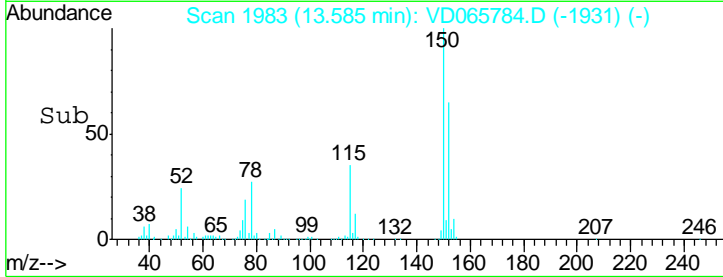
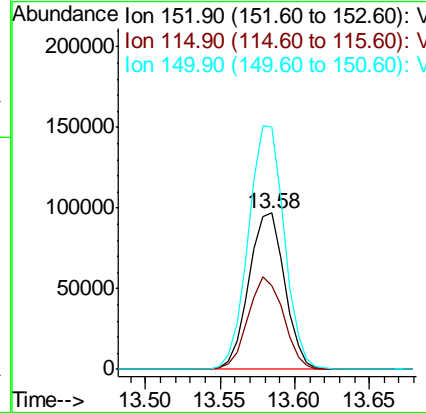
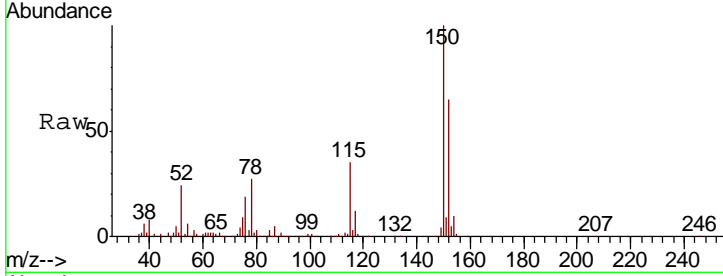




#72
 1,4-Dichlorobenzene-d4
 Concen: 50.000 ug/l
 RT: 13.58 min Scan# 1983
 Delta R.T. 0.01 min
 Lab File: VD065784.D
 Acq: 08 Jun 2020 16:53

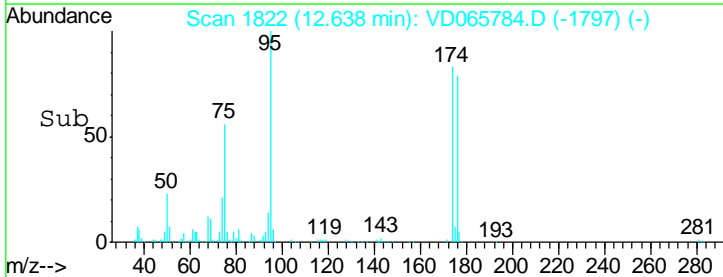
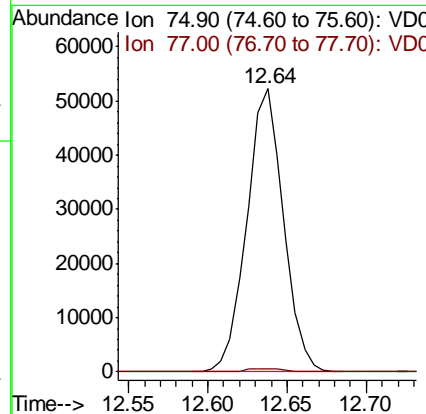
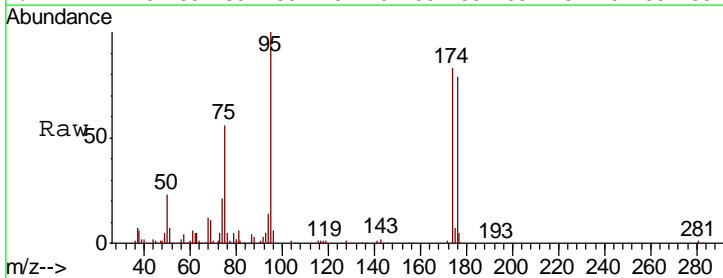
Instrument : MSVOA_D
 ClientSampled :

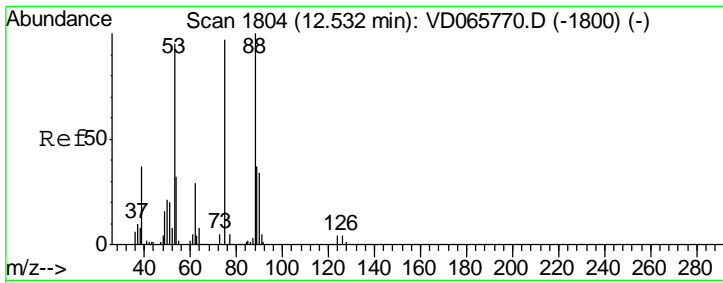
Tgt Ion	Resp	Lower	Upper
152	100		
115	58.5	28.7	86.1
150	156.0	0.0	348.0



#76
 1,2,3-Trichloropropane
 Concen: 66.860 ug/l
 RT: 12.64 min Scan# 1822
 Delta R.T. -0.15 min
 Lab File: VD065784.D
 Acq: 08 Jun 2020 16:53

Tgt Ion	Resp	Lower	Upper
75	100		
77	1.1	0.0	0.0#

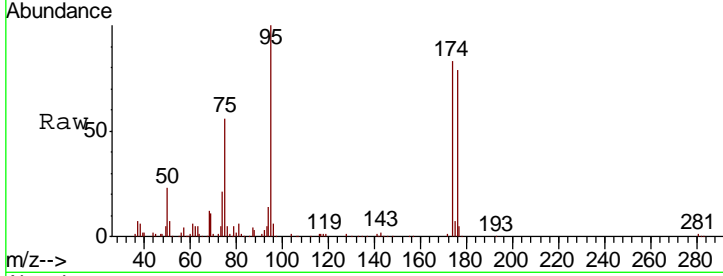




#81
 trans-1,4-Dichloro-2-butene
 Concen: 144.460 ug/l
 RT: 12.64 min Scan# 1822
 Delta R.T. 0.11 min
 Lab File: VD065784.D
 Acq: 08 Jun 2020 16:53

Instrument :
 MSVOA_D
 ClientSampled :

Tot Ion	Ratio	Lower	Upper
75	100		
53	0.0	82.6	123.8#
89	0.0	35.9	53.9#



Abundance Ion 74.90 (74.60 to 75.60): VDC
 Ion 53.00 (52.70 to 53.70): VDC
 Ion 88.90 (88.60 to 89.60): VDC

