

Data Path : Z:\VOASRV\HPCHEM1\MSVOA D\DATA\VD061219\  
 Data File : VD062678.D  
 Acq On : 12 Jun 2019 17:03  
 Operator : VA/AP  
 Sample : K3273-19RE  
 Misc : 4.12g/5ml/MSVOA D/SOIL  
 ALS Vial : 14 Sample Multiplier: 1

**Instrument :**  
 MSVOA\_D  
**ClientSampleId :**  
 SB-10\_0.5-1.0\_060719RE

Quant Time: Jun 13 08:40:04 2019  
 Quant Method : Z:\VOASRV\HPCHEM1\MSVOA\_D\METHOD\82D060719S.M  
 Quant Title : SW846 8260  
 QLast Update : Sat Jun 08 00:02:21 2019  
 Response via : Initial Calibration

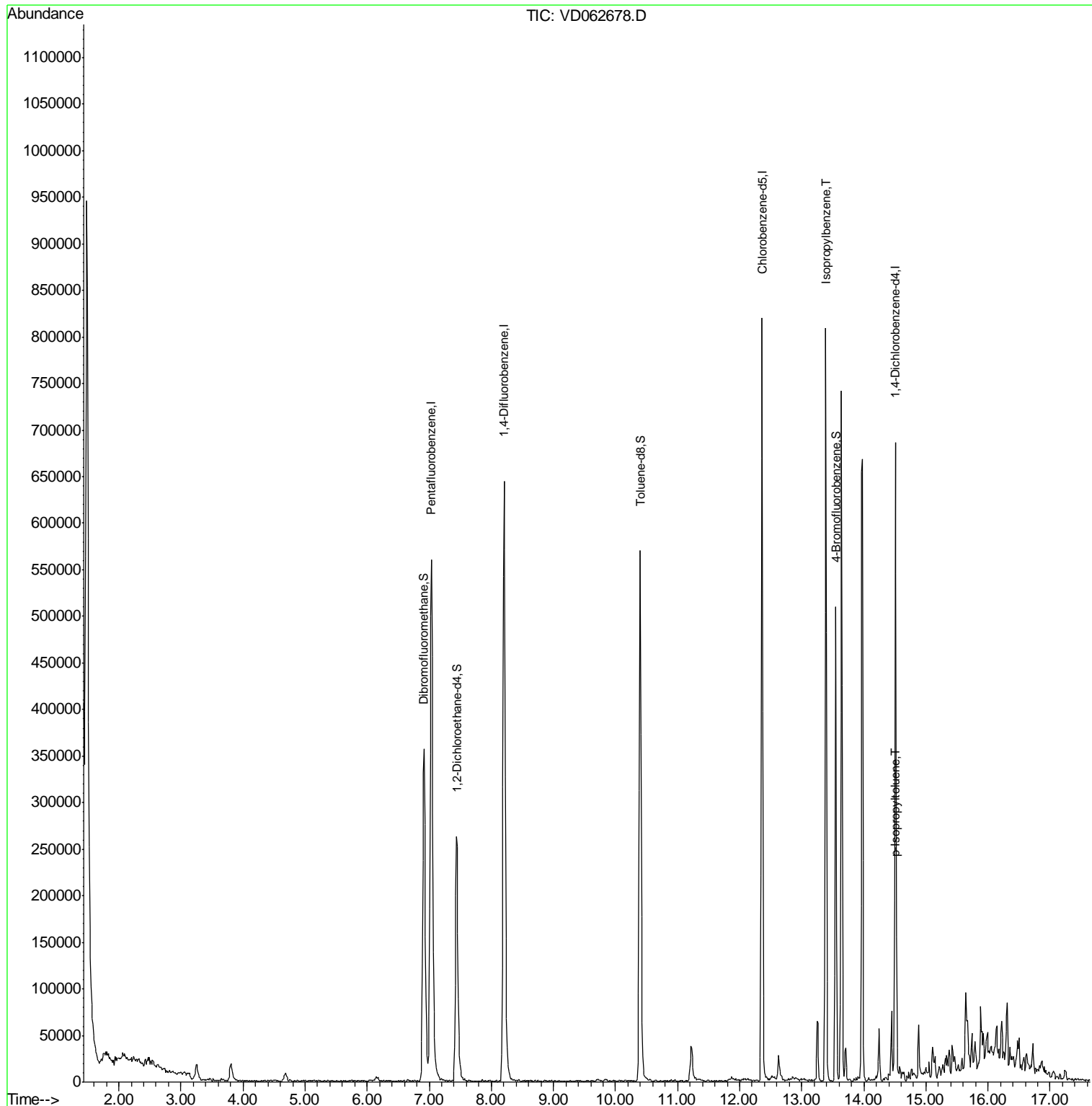
Internal Standards	R.T.	QIon	Response	Conc	Units	Dev(Min)
1) Pentafluorobenzene	7.04	168	528758	50.00	ug/l	0.00
34) 1,4-Difluorobenzene	8.21	114	701129	50.00	ug/l	0.00
63) Chlorobenzene-d5	12.36	117	415717	50.00	ug/l	0.00
72) 1,4-Dichlorobenzene-d4	14.51	152	133926	50.00	ug/l	0.00
System Monitoring Compounds						
33) 1,2-Dichloroethane-d4	7.44	65	310191	40.65	ug/l	0.00
Spiked Amount	50.000		Recovery	=	81.30%	
35) Dibromofluoromethane	6.92	113	311455	42.12	ug/l	0.00
Spiked Amount	50.000		Recovery	=	84.24%	
50) Toluene-d8	10.40	98	457000	29.38	ug/l	0.00
Spiked Amount	50.000		Recovery	=	58.76%	
62) 4-Bromofluorobenzene	13.55	95	140642	19.38	ug/l	0.00
Spiked Amount	50.000		Recovery	=	38.76%	
Target Compounds						
73) Isopropylbenzene	13.39	105	28673	3.037	ug/l #	67
86) p-Isopropyltoluene	14.49	119	10315	1.098	ug/l	93

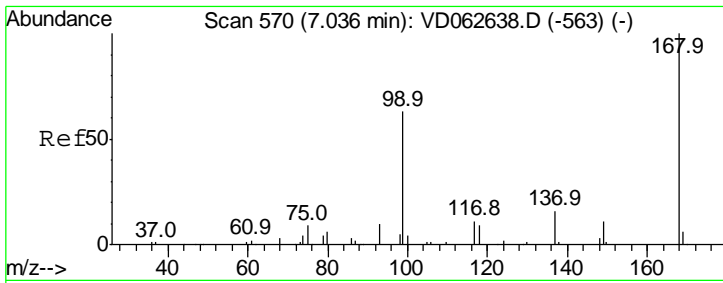
(#) = qualifier out of range (m) = manual integration (+) = signals summed

Data Path : Z:\VOASRV\HPCHEM1\MSVOA D\DATA\VD061219\  
 Data File : VD062678.D  
 Acq On : 12 Jun 2019 17:03  
 Operator : VA/AP  
 Sample : K3273-19RE  
 Misc : 4.12α/5ml/MSVOA D/SOIL  
 ALS Vial : 14 Sample Multiplier: 1

**Instrument :**  
 MSVOA\_D  
**ClientSampleId :**  
 SB-10\_0.5-1.0\_060719RE

Quant Time: Jun 13 08:40:04 2019  
 Quant Method : Z:\VOASRV\HPCHEM1\MSVOA\_D\METHOD\82D060719S.M  
 Quant Title : SW846 8260  
 QLast Update : Sat Jun 08 00:02:21 2019  
 Response via : Initial Calibration

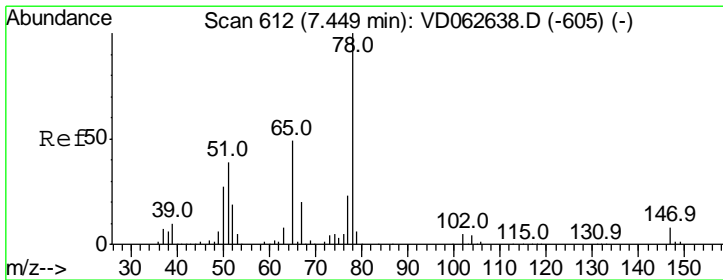
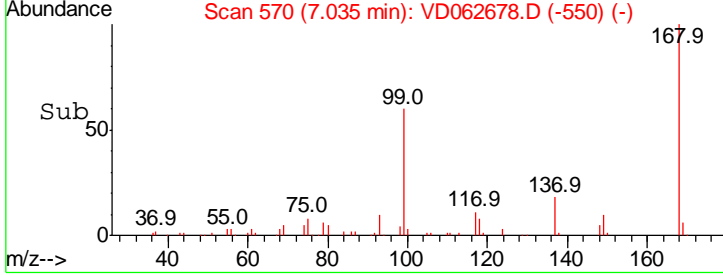
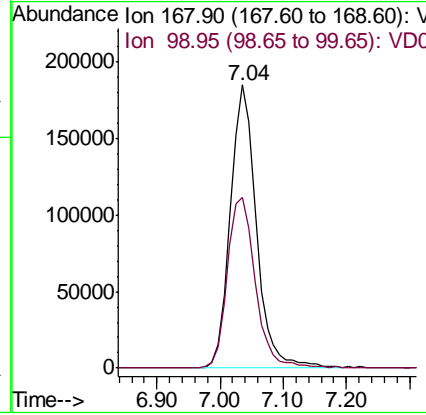
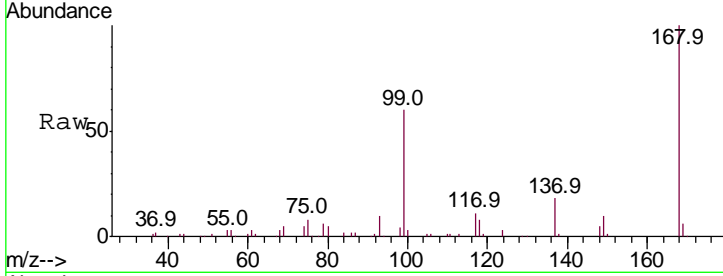




#1  
 Pentafluorobenzene  
 Concen: 50.000 ug/l  
 RT: 7.04 min Scan# 570  
 Delta R.T. -0.00 min  
 Lab File: VD062678.D  
 Acq: 12 Jun 2019 17:03

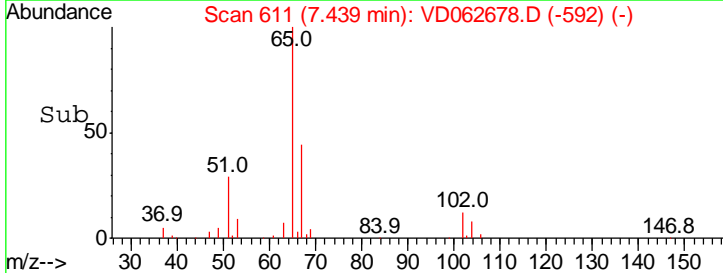
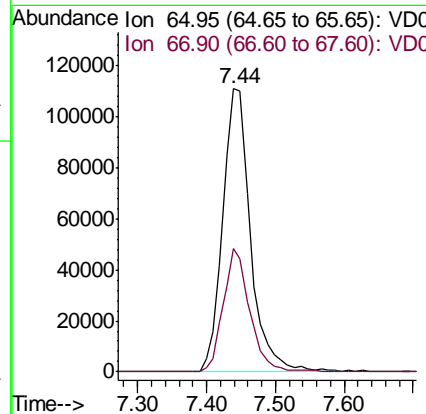
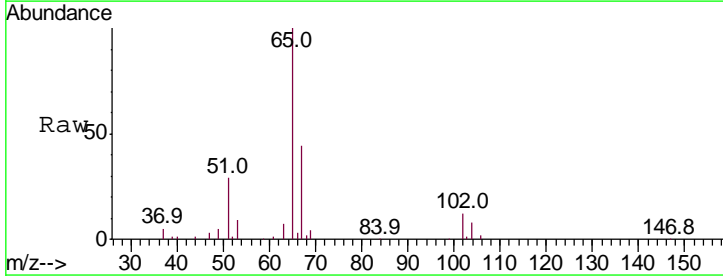
Instrument :  
 MSVOA\_D  
 ClientSampleId :  
 SB-10\_0.5-1.0\_060719RE

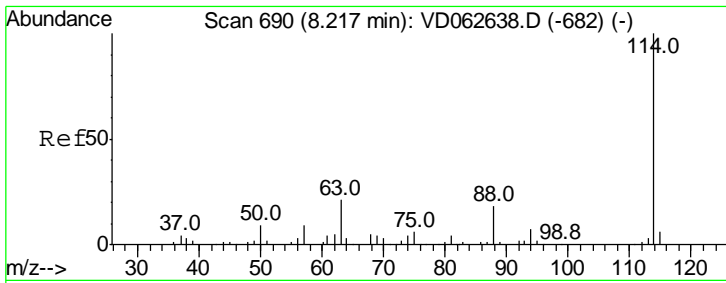
Tgt Ion: 168 Resp: 528758  
 Ion Ratio Lower Upper  
 168 100  
 99 60.2 51.4 77.2



#33  
 1,2-Dichloroethane-d4  
 Concen: 40.654 ug/l  
 RT: 7.44 min Scan# 611  
 Delta R.T. -0.01 min  
 Lab File: VD062678.D  
 Acq: 12 Jun 2019 17:03

Tgt Ion: 65 Resp: 310191  
 Ion Ratio Lower Upper  
 65 100  
 67 43.6 0.0 81.8



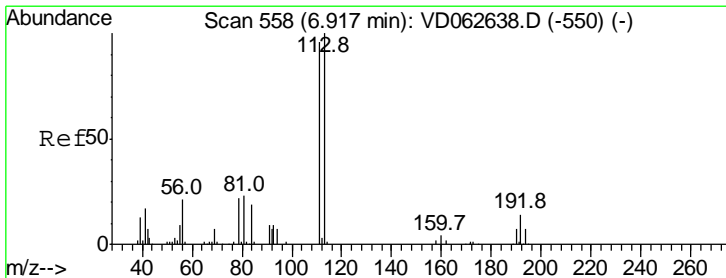
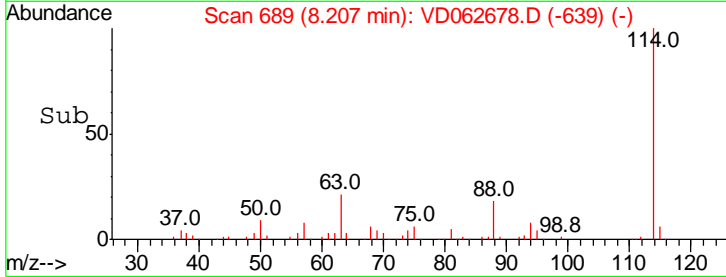
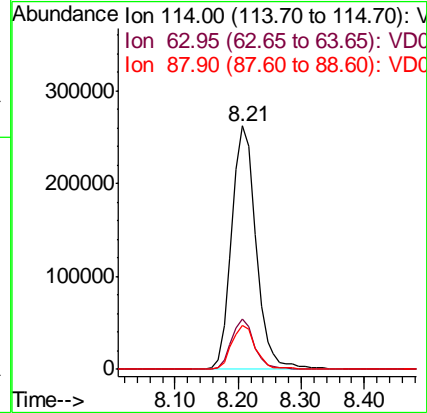
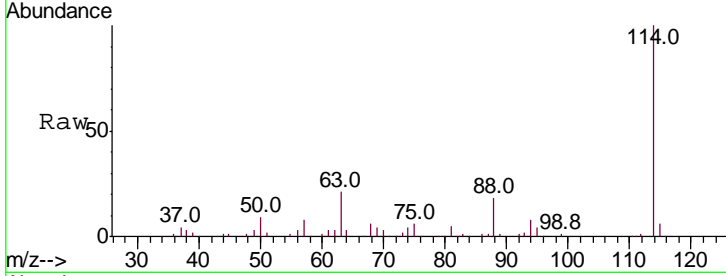


#34  
 1,4-Difluorobenzene  
 Concen: 50.000 ug/l  
 RT: 8.21 min Scan# 689  
 Delta R.T. -0.01 min  
 Lab File: VD062678.D  
 Acq: 12 Jun 2019 17:03

Instrument :  
 MSVOA\_D  
 ClientSampleId :  
 SB-10\_0.5-1.0\_060719RE

Tgt Ion:114 Resp: 701129

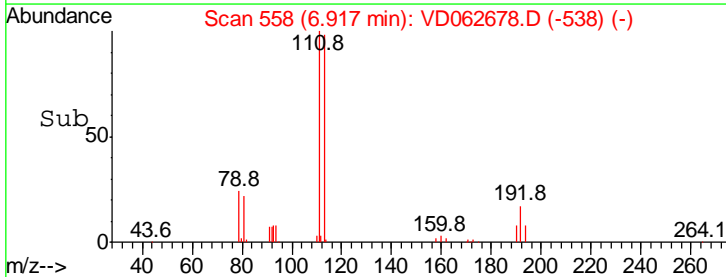
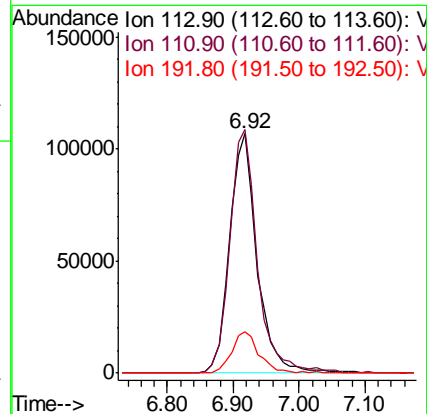
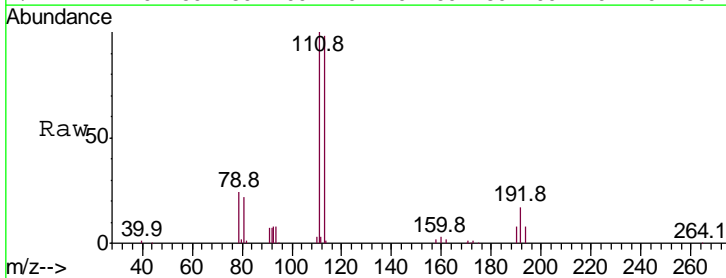
Ion	Ratio	Lower	Upper
114	100		
63	20.9	0.0	42.4
88	17.8	0.0	36.8

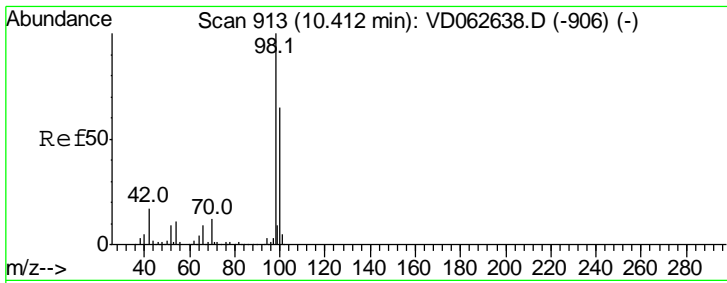


#35  
 Dibromofluoromethane  
 Concen: 42.121 ug/l  
 RT: 6.92 min Scan# 558  
 Delta R.T. -0.00 min  
 Lab File: VD062678.D  
 Acq: 12 Jun 2019 17:03

Tgt Ion:113 Resp: 311455

Ion	Ratio	Lower	Upper
113	100		
111	101.6	76.4	114.6
192	17.5	11.4	17.0#

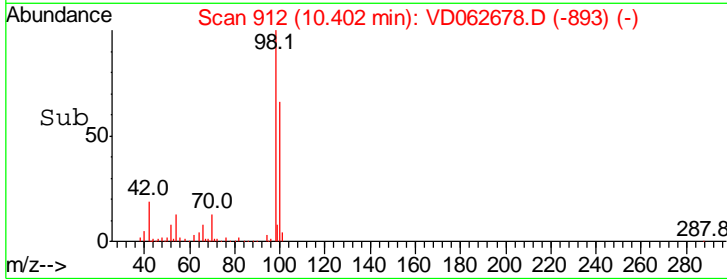
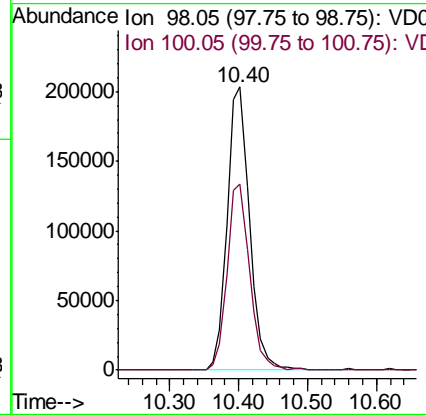
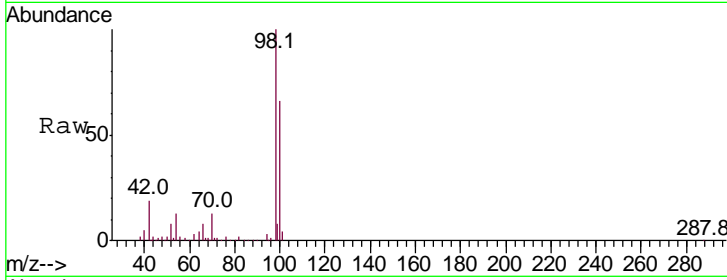




#50  
 Toluene-d8  
 Concen: 29.379 ug/l  
 RT: 10.40 min Scan# 912  
 Delta R.T. -0.01 min  
 Lab File: VD062678.D  
 Acq: 12 Jun 2019 17:03

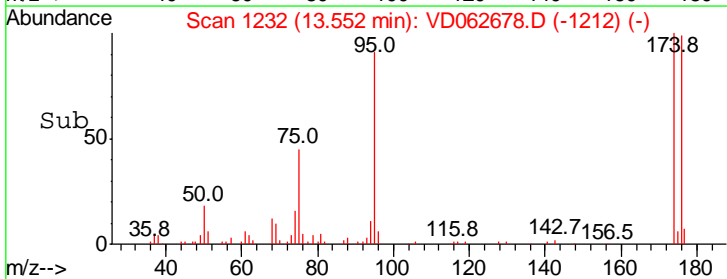
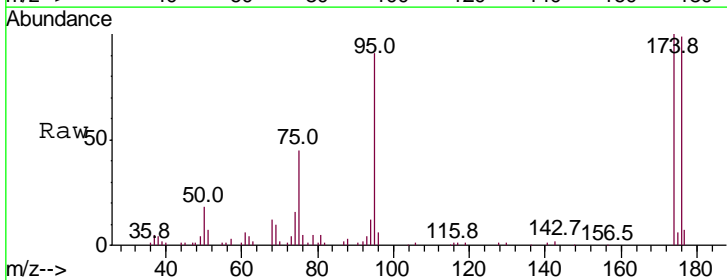
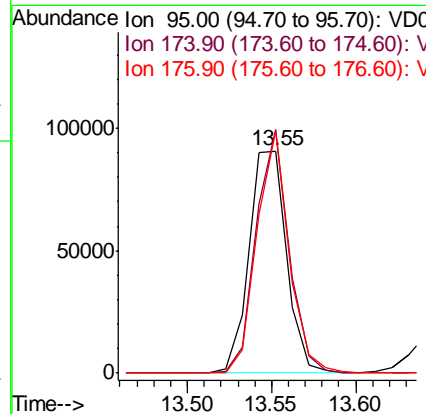
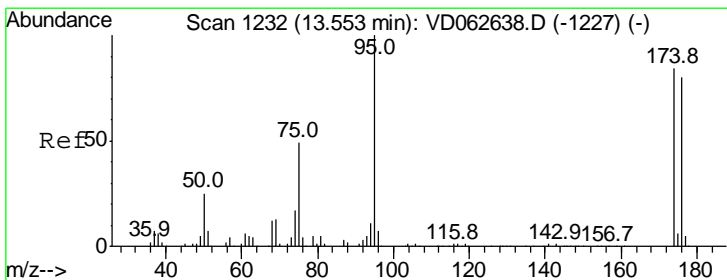
**Instrument :**  
 MSVOA\_D  
**ClientSampled :**  
 SB-10\_0.5-1.0\_060719RE

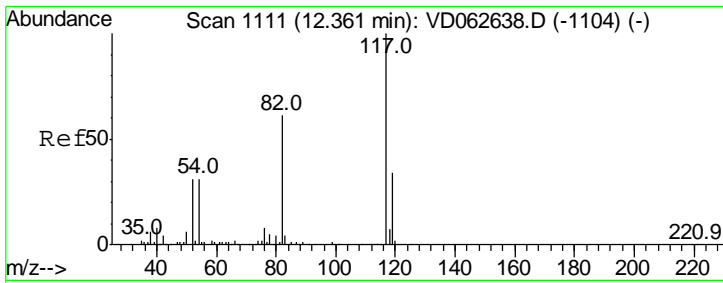
Tgt Ion	Resp	Lower	Upper
98	100		
100	65.9	52.1	78.1



#62  
 4-Bromofluorobenzene  
 Concen: 19.380 ug/l  
 RT: 13.55 min Scan# 1232  
 Delta R.T. -0.00 min  
 Lab File: VD062678.D  
 Acq: 12 Jun 2019 17:03

Tgt Ion	Resp	Lower	Upper
95	100		
174	109.5	0.0	167.0
176	109.0	0.0	159.2

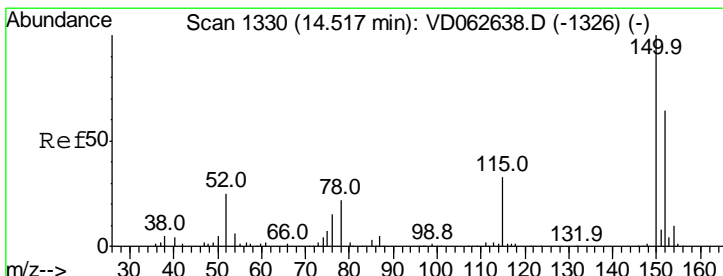
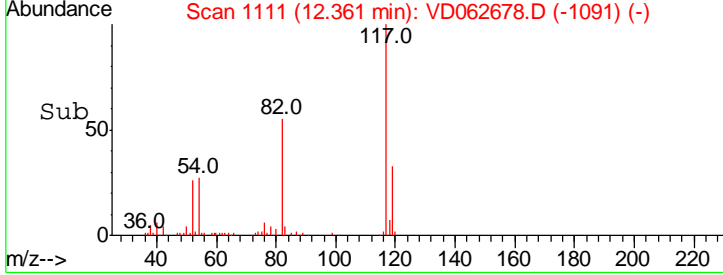
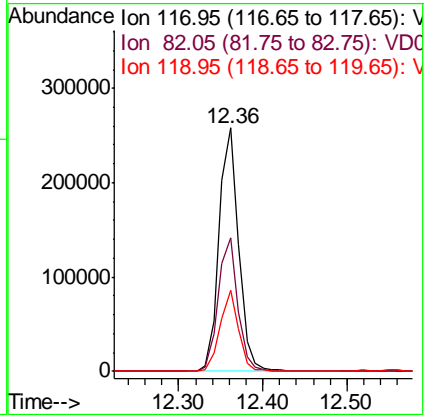
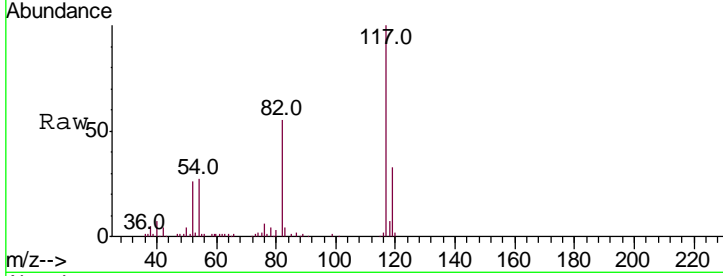




#63  
 Chlorobenzene-d5  
 Concen: 50.000 ug/l  
 RT: 12.36 min Scan# 1111  
 Delta R.T. -0.00 min  
 Lab File: VD062678.D  
 Acq: 12 Jun 2019 17:03

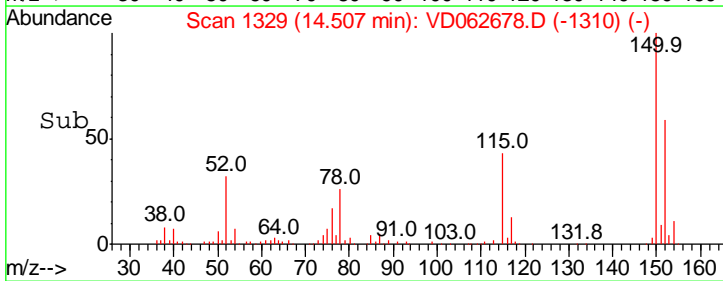
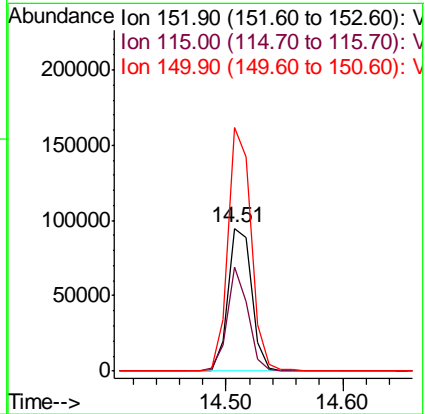
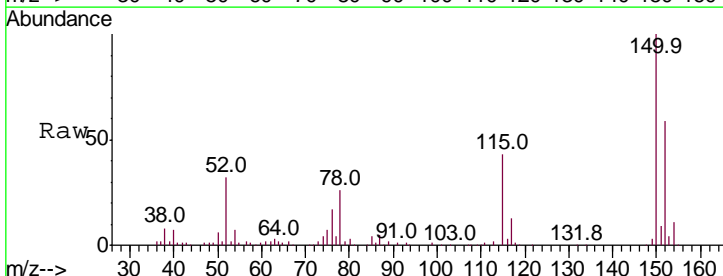
Instrument : MSVOA\_D  
 ClientSampled : SB-10\_0.5-1.0\_060719RE

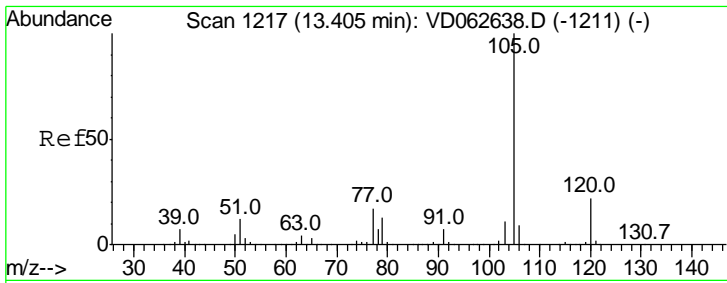
Tgt Ion	Resp	Lower	Upper
117	100		
82	54.6	48.7	73.1
119	33.0	27.0	40.6



#72  
 1,4-Dichlorobenzene-d4  
 Concen: 50.000 ug/l  
 RT: 14.51 min Scan# 1329  
 Delta R.T. -0.01 min  
 Lab File: VD062678.D  
 Acq: 12 Jun 2019 17:03

Tgt Ion	Resp	Lower	Upper
152	100		
115	73.4	30.1	90.5
150	170.8	0.0	314.0

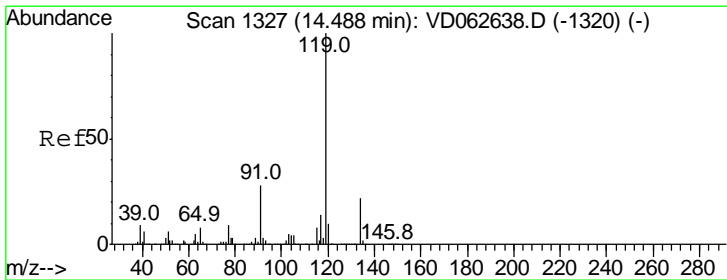
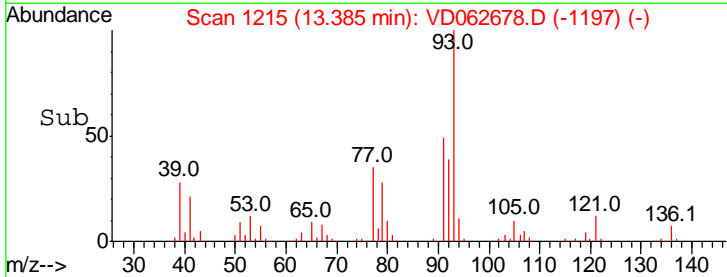
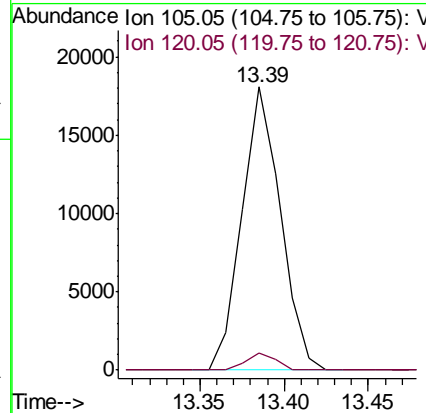
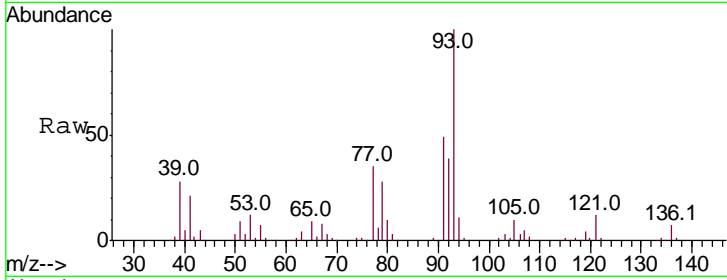




#73  
 Isopropylbenzene  
 Concen: 3.037 ug/l  
 RT: 13.39 min Scan# 1215  
 Delta R.T. -0.02 min  
 Lab File: VD062678.D  
 Acq: 12 Jun 2019 17:03

Instrument : MSVOA\_D  
 ClientSampleId : SB-10\_0.5-1.0\_060719RE

Tgt Ion	Resp	Lower	Upper
105	100		
120	6.0	10.9	32.7#



#86  
 p-Isopropyltoluene  
 Concen: 1.098 ug/l  
 RT: 14.49 min Scan# 1327  
 Delta R.T. -0.00 min  
 Lab File: VD062678.D  
 Acq: 12 Jun 2019 17:03

Tgt Ion	Resp	Lower	Upper
119	100		
134	18.4	10.9	32.6
91	24.1	13.9	41.6

