

Data Path : Z:\VOASRV\HPCHEM1\MSVOA D\DATA\VD061319\  
 Data File : VD062694.D  
 Acq On : 13 Jun 2019 15:12  
 Operator : VA/AP  
 Sample : K3351-05  
 Misc : 6.40µ/5ml/MSVOA D/SOIL  
 ALS Vial : 10 Sample Multiplier: 1

Instrument :  
 MSVOA\_D  
 ClientSampleId :  
 RBR-200029

Integration Parameters: RTEINT.P

Integrator: RTE  
 Smoothing : ON  
 Sampling : 1  
 Start Thrs: 0.2  
 Stop Thrs : 0

Filtering: 5  
 Min Area: 3 % of largest Peak  
 Max Peaks: 100  
 Peak Location: TOP

If leading or trailing edge < 100 prefer < Baseline drop else tangent >  
 Peak separation: 5

Method : Z:\VOASRV\HPCHEM1\MSVOA\_D\METHOD\82D060719S.M  
 Title : SW846 8260

Signal : TIC

peak #	R.T. min	first scan	max scan	last scan	PK TY	peak height	corr. area	corr. % max.	% of total
1	1.484	3	6	24	rVB	972756	2874490	100.00%	14.196%
2	2.104	61	69	72	rBV2	15150	59319	2.06%	0.293%
3	3.227	179	183	190	rBV3	39261	113410	3.95%	0.560%
4	6.180	477	483	491	rVB	23268	78821	2.74%	0.389%
5	6.938	552	560	566	rBV	404318	1174230	40.85%	5.799%
6	7.056	566	572	585	rVB	885300	2510453	87.34%	12.398%
7	7.460	608	613	624	rBV	307243	822812	28.62%	4.064%
8	8.228	684	691	708	rBV	1065496	2722325	94.71%	13.445%
9	10.423	908	914	921	rBV	810954	1878989	65.37%	9.280%
10	11.240	993	997	1004	rBV2	25650	68183	2.37%	0.337%
11	12.372	1108	1112	1121	rBV	1709297	2758589	95.97%	13.624%
12	13.396	1212	1216	1222	rVB	131060	191999	6.68%	0.948%
13	13.563	1229	1233	1240	rBV	1163789	1528685	53.18%	7.550%
14	13.721	1246	1249	1254	rVB	27153	40581	1.41%	0.200%
15	13.977	1273	1275	1278	rVB3	22128	33752	1.17%	0.167%
16	14.459	1321	1324	1327	rBV2	60026	73972	2.57%	0.365%
17	14.518	1327	1330	1334	rBV	1575971	2338707	81.36%	11.550%
18	14.715	1348	1350	1354	rVB2	24940	37075	1.29%	0.183%
19	14.784	1354	1357	1360	rBV2	39672	58691	2.04%	0.290%
20	15.010	1375	1380	1383	rBV4	9910	29806	1.04%	0.147%
21	15.060	1383	1385	1387	rVV	30323	29808	1.04%	0.147%
22	15.119	1387	1391	1392	rVV	20424	31329	1.09%	0.155%
23	15.138	1392	1393	1396	rVB	23548	29608	1.03%	0.146%
24	15.345	1410	1414	1416	rBV	31477	43027	1.50%	0.212%
25	15.384	1416	1418	1421	rVB	48897	58134	2.02%	0.287%
26	15.443	1421	1424	1426	rBV3	22530	36139	1.26%	0.178%
27	15.680	1445	1448	1450	rBV2	139006	188128	6.54%	0.929%
28	15.916	1468	1472	1475	rVV4	20613	54478	1.90%	0.269%
29	15.965	1475	1477	1479	rVV2	25622	41430	1.44%	0.205%
30	16.005	1479	1481	1483	rVB2	28749	34769	1.21%	0.172%
31	16.231	1500	1504	1506	rBV3	29859	54683	1.90%	0.270%
32	16.261	1506	1507	1510	rVV	43322	53199	1.85%	0.263%
33	16.359	1514	1517	1519	rVV	33192	42576	1.48%	0.210%
34	16.487	1526	1530	1534	rVV2	42815	78362	2.73%	0.387%

Data Path : Z:\VOASRV\HPCHEM1\MSVOA D\DATA\VD061319\  
Data File : VD062694.D  
Acq On : 13 Jun 2019 15:12  
Operator : VA/AP  
Sample : K3351-05  
Misc : 6.40g/5ml/MSVOA D/SOIL  
ALS Vial : 10 Sample Multiplier: 1

Instrument :  
MSVOA\_D  
ClientSampleId :  
RBR-200029

Integration Parameters: RTEINT.P  
Integrator: RTE  
Smoothing : ON Filtering: 5  
Sampling : 1 Min Area: 3 % of largest Peak  
Start Thrs: 0.2 Max Peaks: 100  
Stop Thrs : 0 Peak Location: TOP

If leading or trailing edge < 100 prefer < Baseline drop else tangent >  
Peak separation: 5

Method : Z:\VOASRV\HPCHEM1\MSVOA\_D\METHOD\82D060719S.M  
Title : SW846 8260

35	16.625	1541	1544	1549	rVV4	19350	45017	1.57%	0.222%
36	17.058	1586	1588	1592	rVB4	20737	32566	1.13%	0.161%

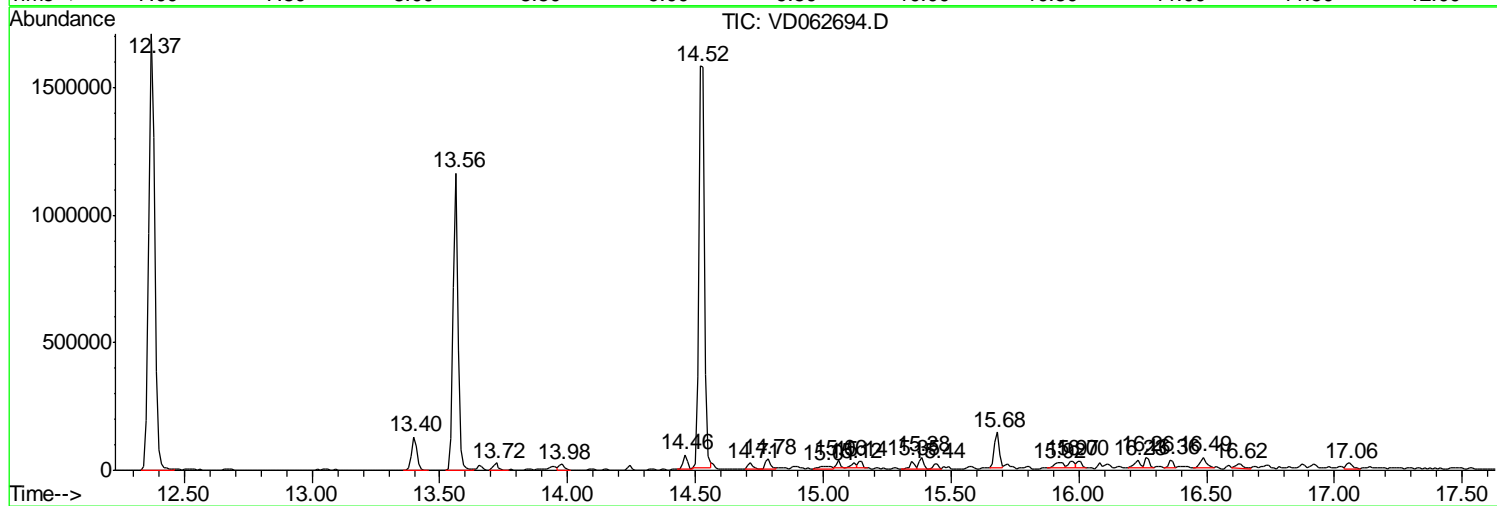
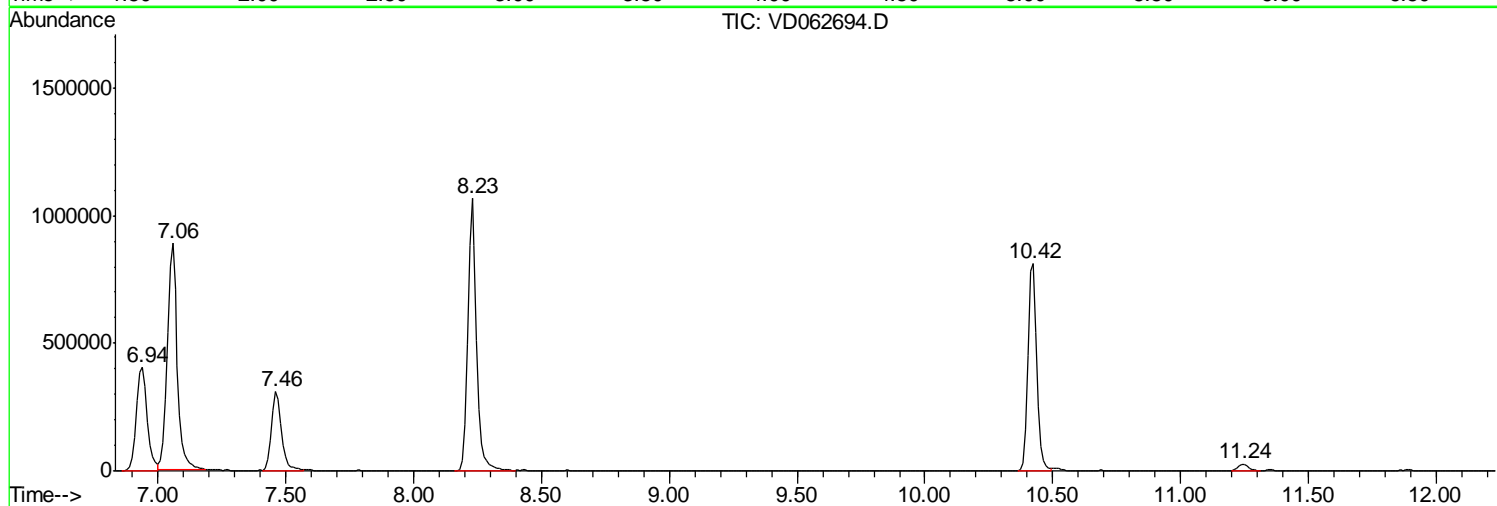
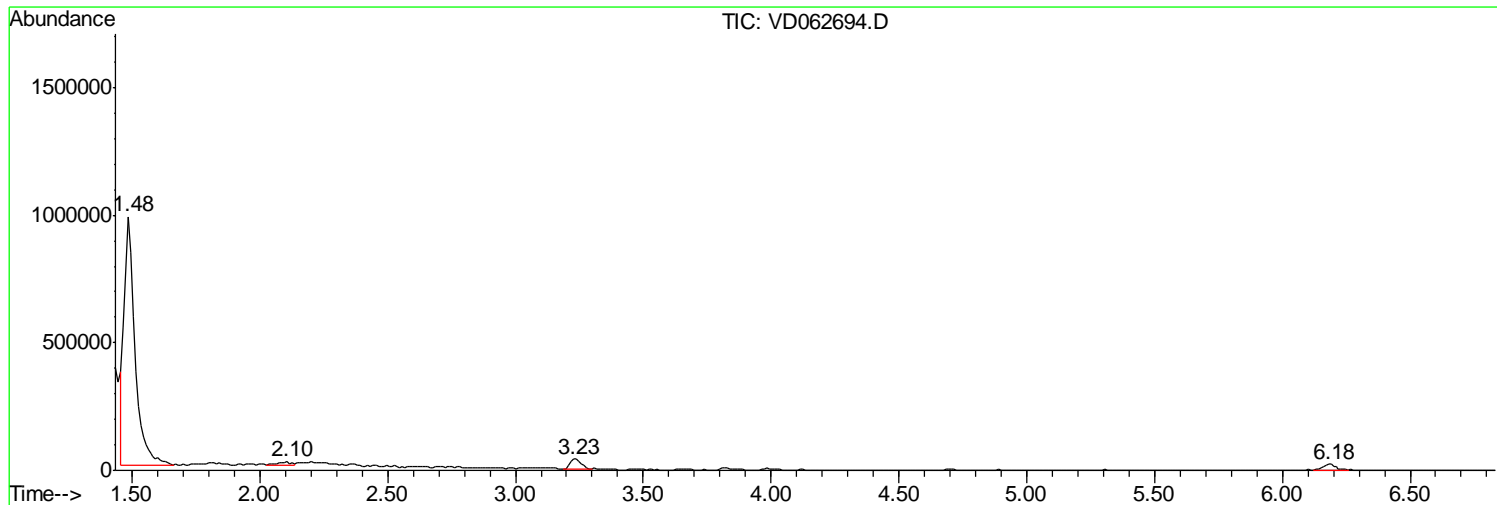
Sum of corrected areas: 20248142

Data Path : Z:\VOASRV\HPCHEM1\MSVOA D\DATA\VD061319\  
 Data File : VD062694.D  
 Acq On : 13 Jun 2019 15:12  
 Operator : VA/AP  
 Sample : K3351-05  
 Misc : 6.40µ/5ml/MSVOA D/SOIL  
 ALS Vial : 10 Sample Multiplier: 1

Instrument :  
 MSVOA\_D  
 ClientSampleId :  
 RBR-200029

Quant Method : Z:\VOASRV\HPCHEM1\MSVOA\_D\METHOD\82D060719S.M  
 Quant Title : SW846 8260

TIC Library : C:\DATABASE\NIST11.L  
 TIC Integration Parameters: LSCINT.P



Data Path : Z:\VOASRV\HPCHEM1\MSVOA\_D\DATA\VD061319\  
Data File : VD062694.D  
Acq On : 13 Jun 2019 15:12  
Operator : VA/AP  
Sample : K3351-05  
Misc : 6.40g/5ml/MSVOA\_D/SOIL  
ALS Vial : 10 Sample Multiplier: 1

Instrument :  
MSVOA\_D  
ClientSampleId :  
RBR-200029

Quant Method : Z:\VOASRV\HPCHEM1\MSVOA\_D\METHOD\82D060719S.M  
Quant Title : SW846 8260

TIC Library : C:\DATABASE\NIST11.L  
TIC Integration Parameters: LSCINT.P

No Library Search Compounds Detected

\*\*\*\*\*

Data Path : Z:\VOASRV\HPCHEM1\MSVOA\_D\DATA\VD061319\  
Data File : VD062694.D  
Acq On : 13 Jun 2019 15:12  
Operator : VA/AP  
Sample : K3351-05  
Misc : 6.40g/5ml/MSVOA\_D/SOIL  
ALS Vial : 10 Sample Multiplier: 1

Instrument :  
MSVOA\_D  
ClientSampleId :  
RBR-200029

Quant Method : Z:\VOASRV\HPCHEM1\MSVOA\_D\METHOD\82D060719S.M  
Quant Title : SW846 8260

TIC Library : C:\DATABASE\NIST11.L  
TIC Integration Parameters: LSCINT.P

TIC Top Hit name	RT	EstConc	Units	Response	--Internal Standard--			
					#	RT	Resp	Conc

---