

Data Path : Z:\VOASRV\HPCHEM1\MSVOA D\DATA\VD061419\
 Data File : VD062710.D
 Acq On : 14 Jun 2019 14:50
 Operator : VA/AP
 Sample : K3369-12RE
 Misc : 5.97g/5ml/MSVOA D/SOIL
 ALS Vial : 9 Sample Multiplier: 1

Instrument :
 MSVOA_D
 ClientSampleId :
 Z-3-SOIL-3RE

Quant Time: Jun 15 05:16:22 2019
 Quant Method : Z:\VOASRV\HPCHEM1\MSVOA_D\METHOD\82D060719S.M
 Quant Title : SW846 8260
 QLast Update : Sat Jun 08 00:02:21 2019
 Response via : Initial Calibration

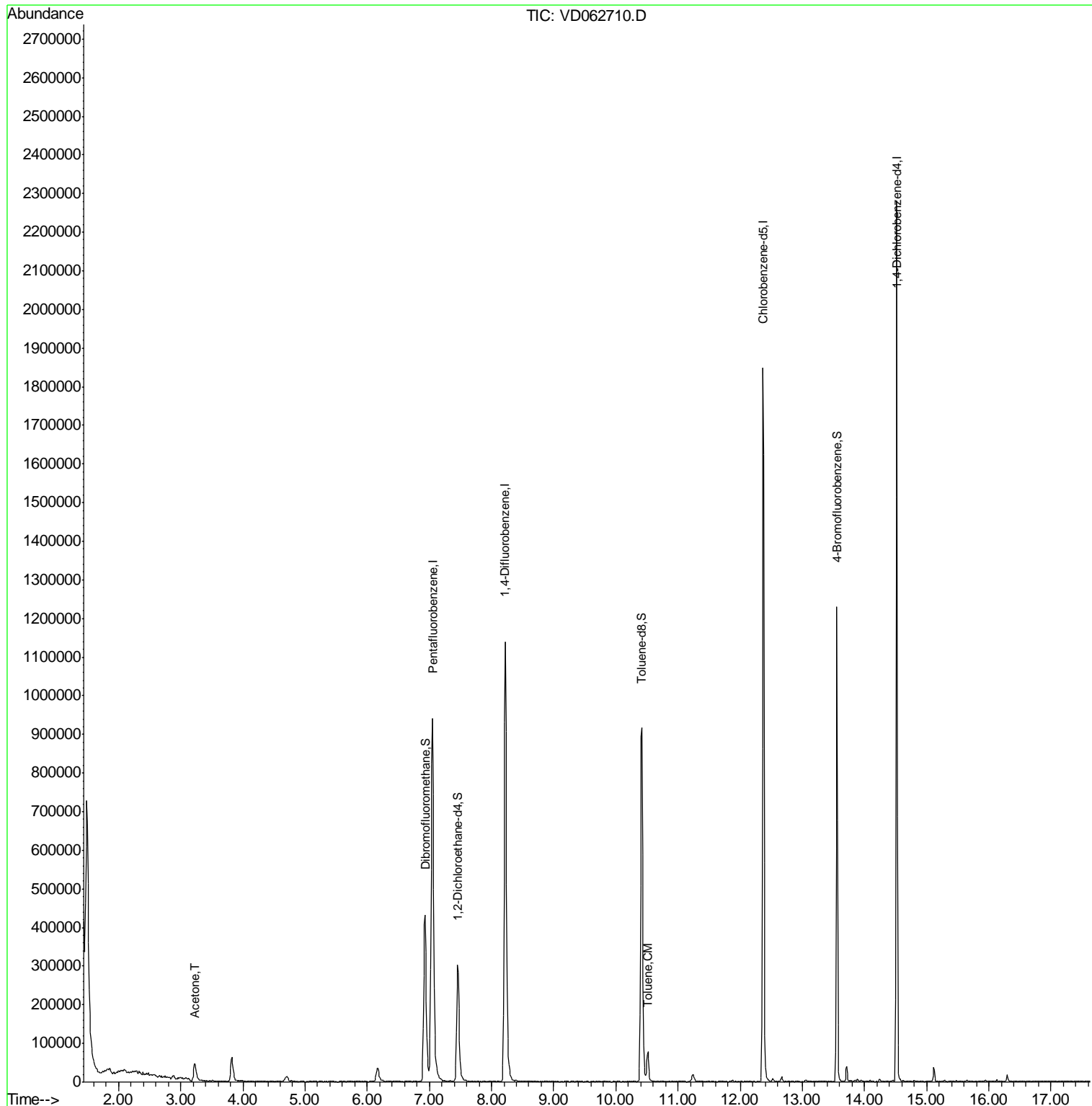
Internal Standards	R.T.	QIon	Response	Conc	Units	Dev(Min)
1) Pentafluorobenzene	7.05	168	894562	50.00	ug/l	0.01
34) 1,4-Difluorobenzene	8.22	114	1182642	50.00	ug/l	0.00
63) Chlorobenzene-d5	12.37	117	983796	50.00	ug/l	0.00
72) 1,4-Dichlorobenzene-d4	14.52	152	458420	50.00	ug/l	0.00
System Monitoring Compounds						
33) 1,2-Dichloroethane-d4	7.45	65	363894	28.19	ug/l	0.00
Spiked Amount	50.000		Recovery	=	56.38%	
35) Dibromofluoromethane	6.93	113	380221	30.48	ug/l	0.01
Spiked Amount	50.000		Recovery	=	60.96%	
50) Toluene-d8	10.42	98	752243	28.67	ug/l	0.00
Spiked Amount	50.000		Recovery	=	57.34%	
62) 4-Bromofluorobenzene	13.56	95	314700	25.71	ug/l	0.00
Spiked Amount	50.000		Recovery	=	51.42%	
Target Compounds						
16) Acetone	3.23	43	98632	41.727	ug/l	94
52) Toluene	10.51	92	35720	2.010	ug/l	96

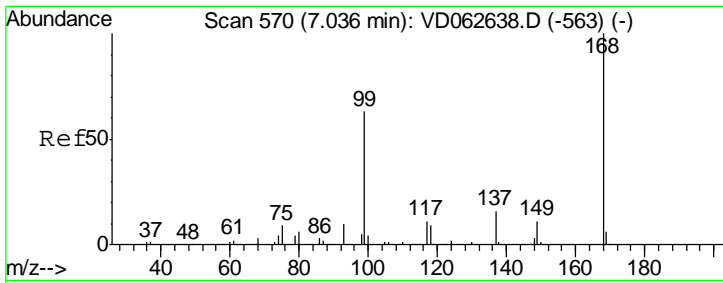
(#) = qualifier out of range (m) = manual integration (+) = signals summed

Data Path : Z:\VOASRV\HPCHEM1\MSVOA D\DATA\VD061419\
 Data File : VD062710.D
 Acq On : 14 Jun 2019 14:50
 Operator : VA/AP
 Sample : K3369-12RE
 Misc : 5.97µ/5ml/MSVOA D/SOIL
 ALS Vial : 9 Sample Multiplier: 1

Instrument :
 MSVOA_D
 ClientSampled :
 Z-3-SOIL-3RE

Quant Time: Jun 15 05:16:22 2019
 Quant Method : Z:\VOASRV\HPCHEM1\MSVOA_D\METHOD\82D060719S.M
 Quant Title : SW846 8260
 QLast Update : Sat Jun 08 00:02:21 2019
 Response via : Initial Calibration

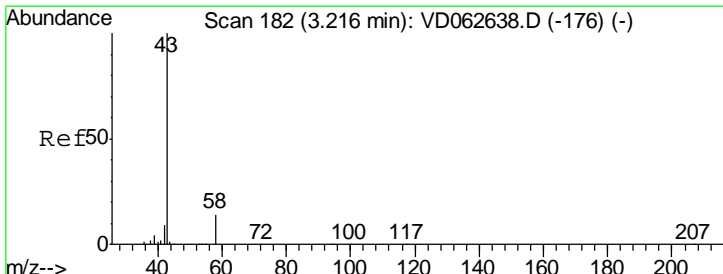
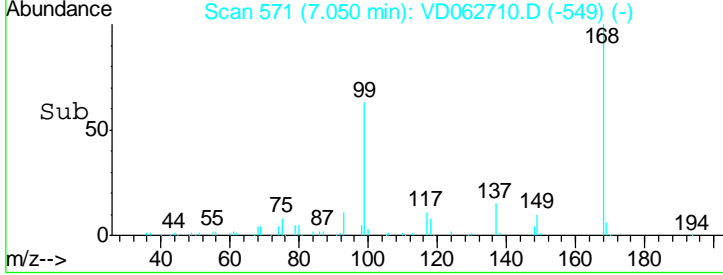
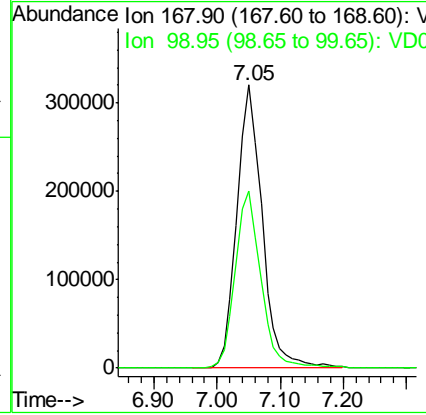
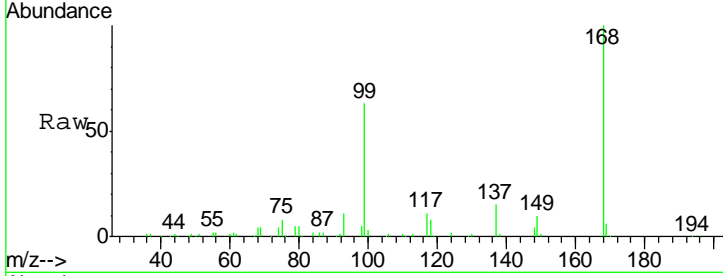




#1
 Pentafluorobenzene
 Concen: 50.000 ug/l
 RT: 7.05 min Scan# 571
 Delta R.T. 0.01 min
 Lab File: VD062710.D
 Acq: 14 Jun 2019 14:50

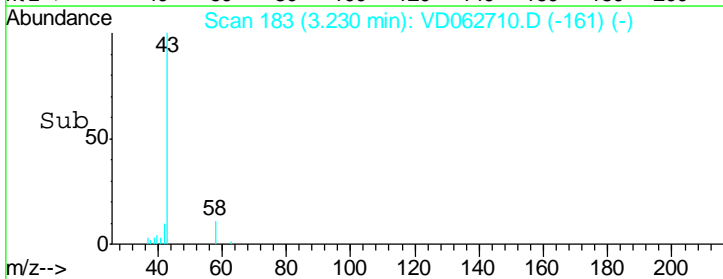
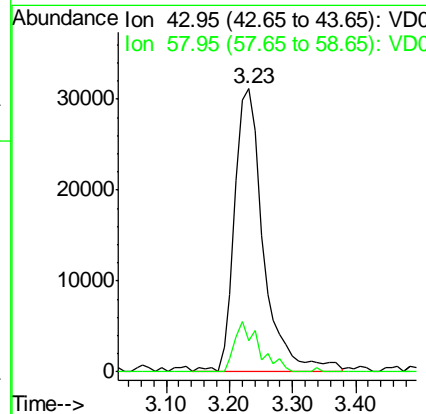
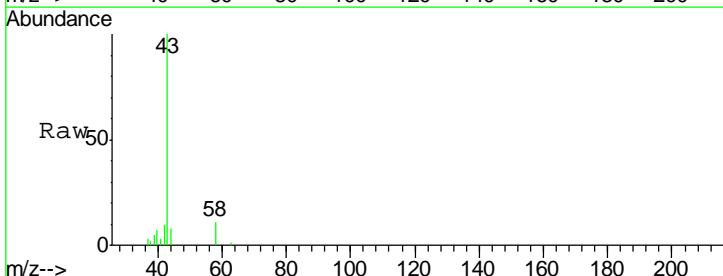
Instrument :
 MSVOA_D
 ClientSampled :
 Z-3-SOIL-3RE

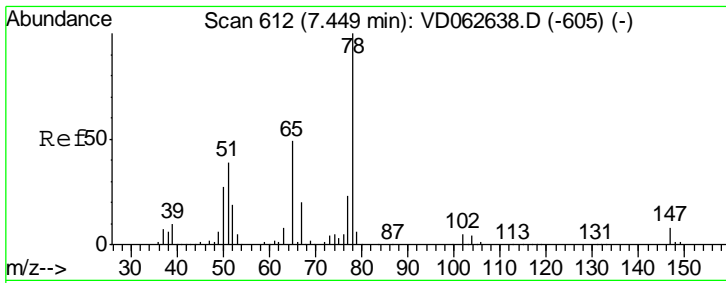
Tot Ion: 168 Resp: 894562
 Ion Ratio Lower Upper
 168 100
 99 62.6 51.4 77.2



#16
 Acetone
 Concen: 41.727 ug/l
 RT: 3.23 min Scan# 183
 Delta R.T. 0.01 min
 Lab File: VD062710.D
 Acq: 14 Jun 2019 14:50

Tgt Ion: 43 Resp: 98632
 Ion Ratio Lower Upper
 43 100
 58 10.9 10.8 16.2

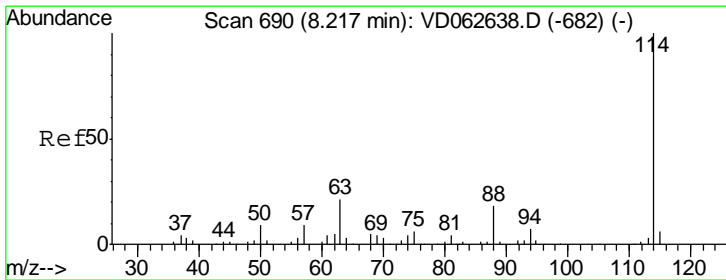
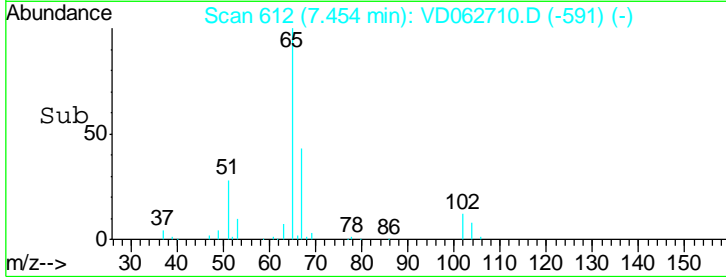
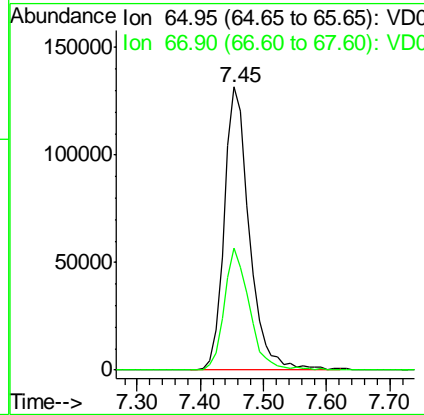
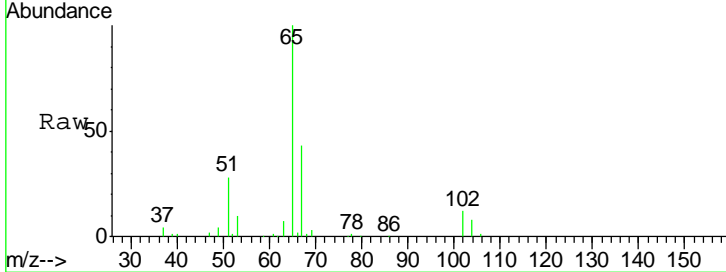




#33
 1,2-Dichloroethane-d4
 Concen: 28.190 ug/l
 RT: 7.45 min Scan# 612
 Delta R.T. 0.00 min
 Lab File: VD062710.D
 Acq: 14 Jun 2019 14:50

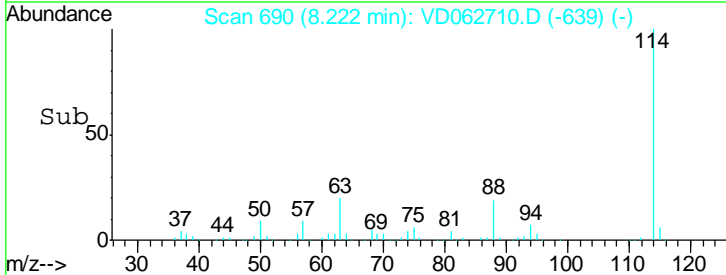
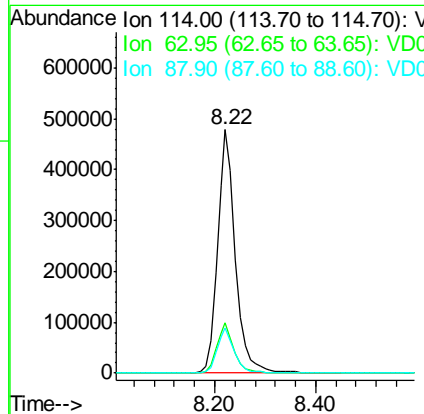
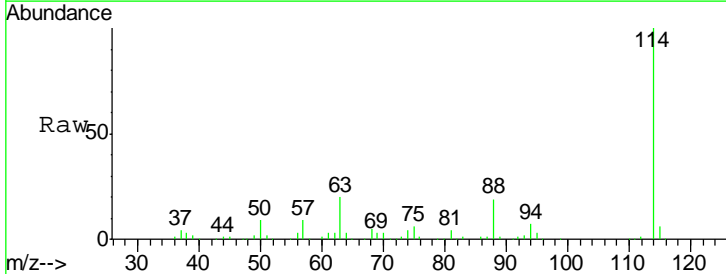
Instrument :
 MSVOA_D
 ClientSampled :
 Z-3-SOIL-3RE

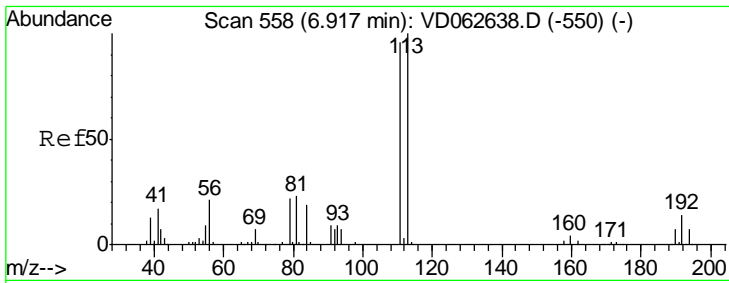
Tgt Ion	Resp	Lower	Upper
65	100		
67	43.0	0.0	81.8



#34
 1,4-Difluorobenzene
 Concen: 50.000 ug/l
 RT: 8.22 min Scan# 690
 Delta R.T. 0.00 min
 Lab File: VD062710.D
 Acq: 14 Jun 2019 14:50

Tgt Ion	Resp	Lower	Upper
114	100		
63	20.4	0.0	42.4
88	18.5	0.0	36.8

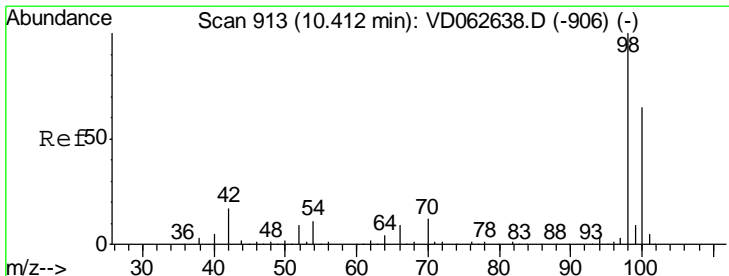
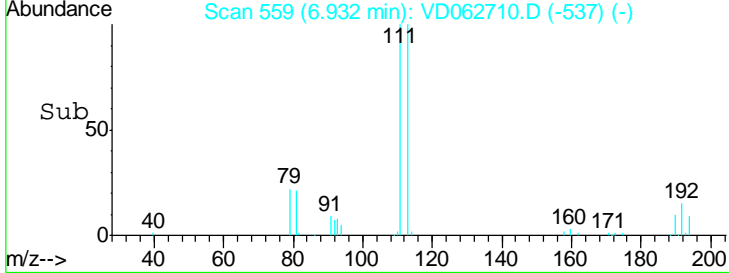
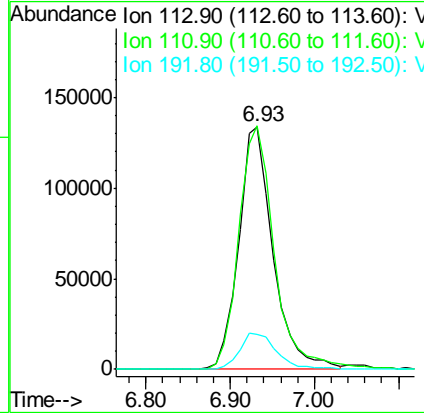
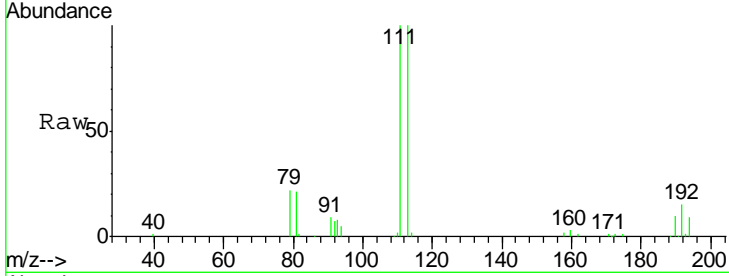




#35
 Dibromofluoromethane
 Concen: 30.485 ug/l
 RT: 6.93 min Scan# 559
 Delta R.T. 0.01 min
 Lab File: VD062710.D
 Acq: 14 Jun 2019 14:50

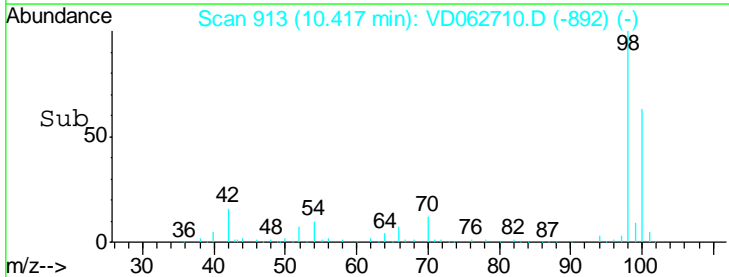
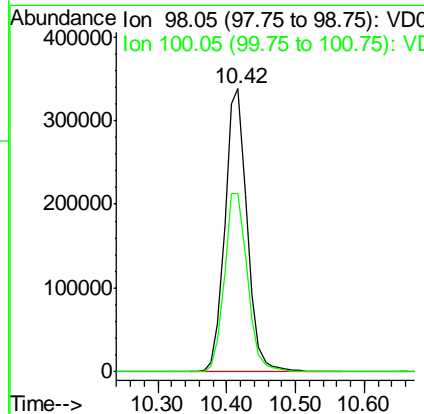
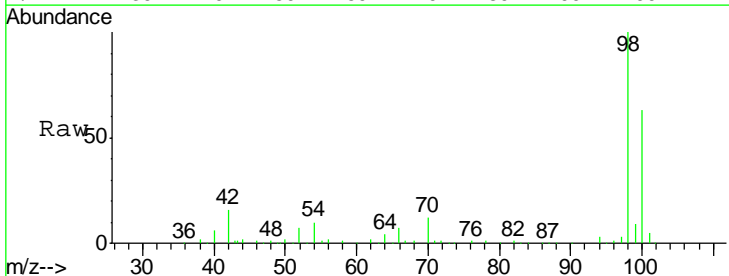
Instrument :
 MSVOA_D
 ClientSampleId :
 Z-3-SOIL-3RE

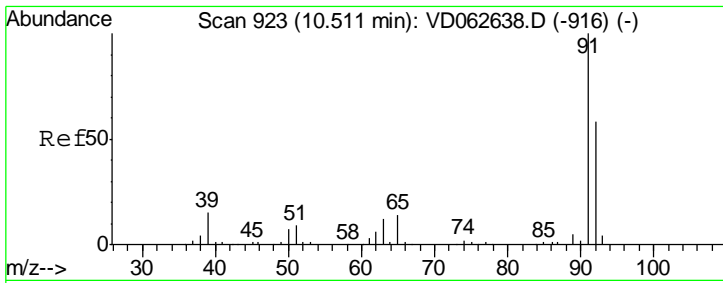
Tgt Ion	Resp	Lower	Upper
113	380221		
111	100	76.4	114.6
192	14.6	11.4	17.0



#50
 Toluene-d8
 Concen: 28.670 ug/l
 RT: 10.42 min Scan# 913
 Delta R.T. 0.00 min
 Lab File: VD062710.D
 Acq: 14 Jun 2019 14:50

Tgt Ion	Resp	Lower	Upper
98	752243		
100	100	63.0	78.1

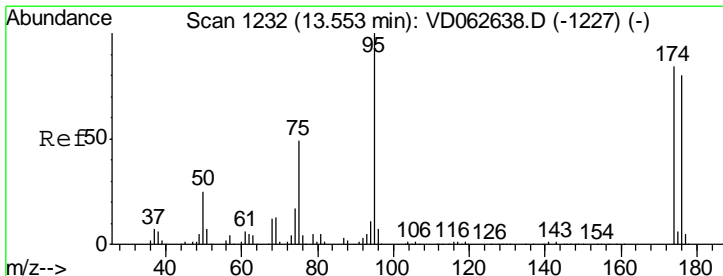
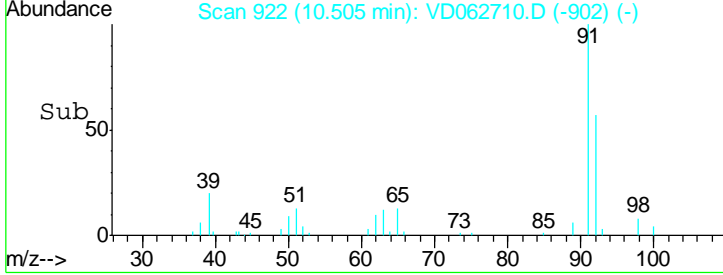
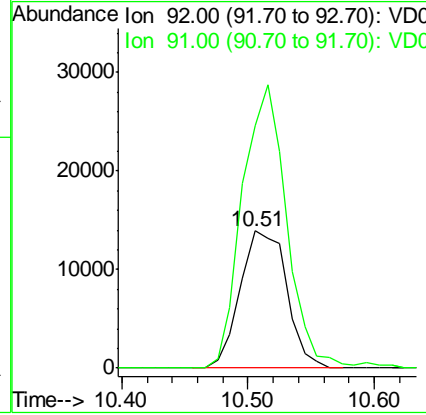
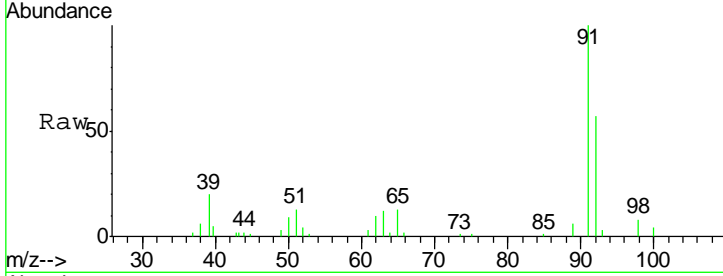




#52
 Toluene
 Concen: 2.010 ug/l
 RT: 10.51 min Scan# 922
 Delta R.T. -0.01 min
 Lab File: VD062710.D
 Acq: 14 Jun 2019 14:50

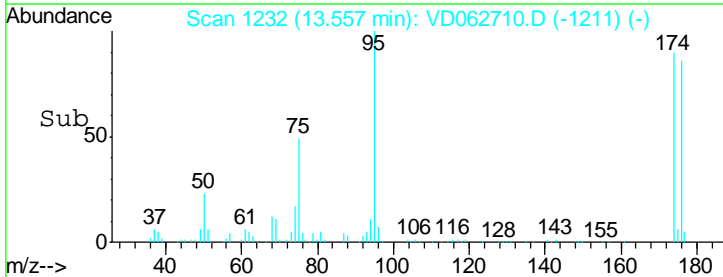
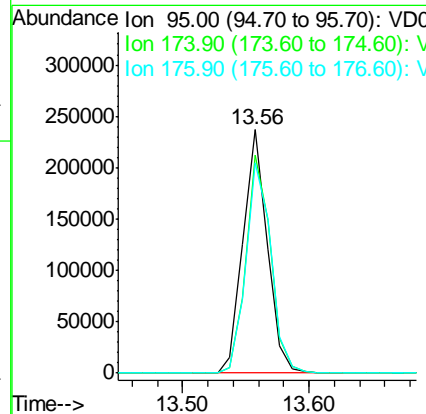
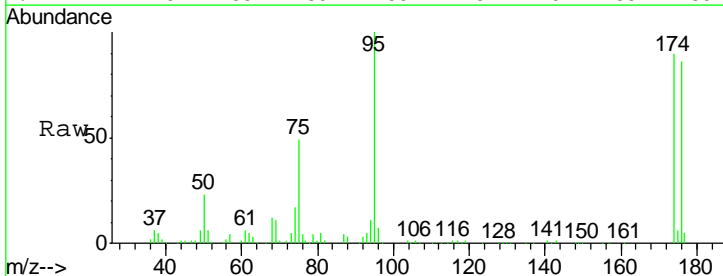
Instrument :
 MSVOA_D
 ClientSampled :
 Z-3-SOIL-3RE

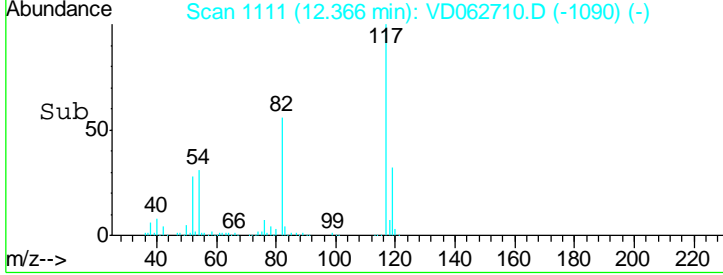
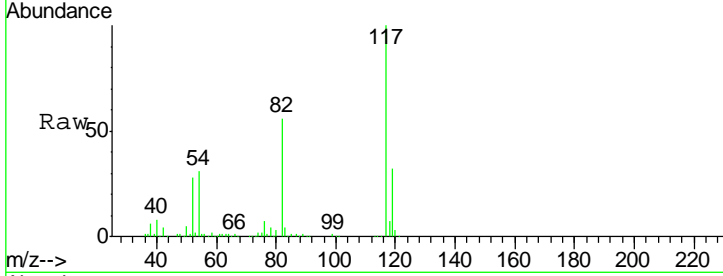
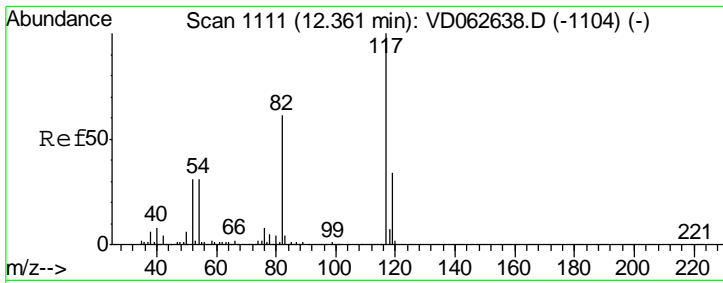
Tot Ion: 92 Resp: 35720
 Ion Ratio Lower Upper
 92 100
 91 176.6 137.0 205.6



#62
 4-Bromofluorobenzene
 Concen: 25.709 ug/l
 RT: 13.56 min Scan# 1232
 Delta R.T. 0.00 min
 Lab File: VD062710.D
 Acq: 14 Jun 2019 14:50

Tgt Ion: 95 Resp: 314700
 Ion Ratio Lower Upper
 95 100
 174 89.6 0.0 167.0
 176 86.2 0.0 159.2

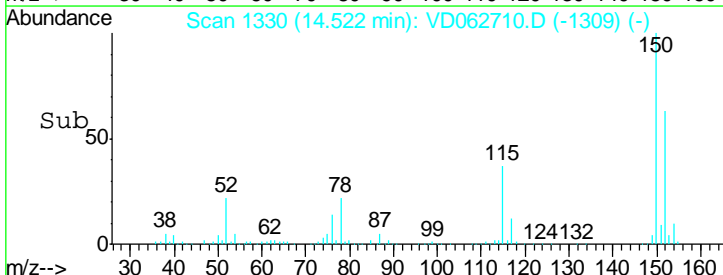
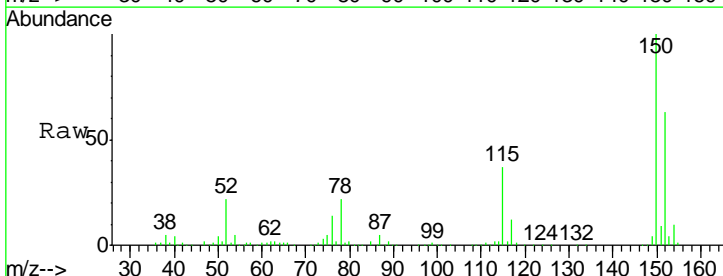
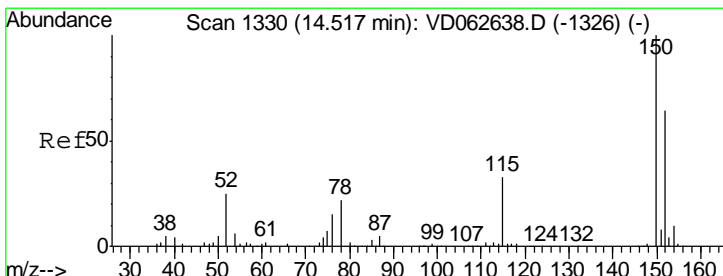
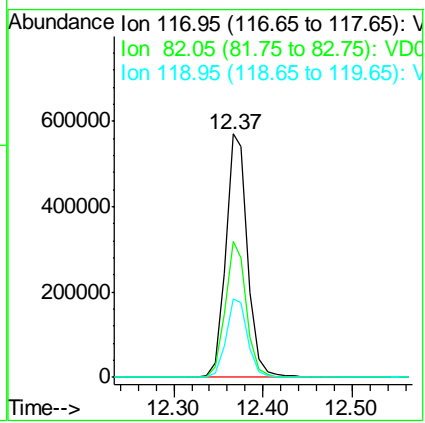




#63
 Chlorobenzene-d5
 Concen: 50.000 ug/l
 RT: 12.37 min Scan# 1111
 Delta R.T. 0.00 min
 Lab File: VD062710.D
 Acq: 14 Jun 2019 14:50

Instrument : MSVOA_D
 ClientSampled : Z-3-SOIL-3RE

Tgt Ion	Resp	Lower	Upper
117	983796		
82	55.8	48.7	73.1
119	32.2	27.0	40.6



#72
 1,4-Dichlorobenzene-d4
 Concen: 50.000 ug/l
 RT: 14.52 min Scan# 1330
 Delta R.T. 0.00 min
 Lab File: VD062710.D
 Acq: 14 Jun 2019 14:50

Tgt Ion	Resp	Lower	Upper
152	458420		
115	57.9	30.1	90.5
150	157.8	0.0	314.0

