

Data Path : Z:\voasrv\HPCHEM1\MSVOA_D\Data\VD061421\
 Data File : VD069434.D
 Acq On : 14 Jun 2021 18:42
 Operator : VA/SY
 Sample : M2709-06
 Misc : 5.03G/5.00ml/MSVOA_D/SOIL
 ALS Vial : 19 Sample Multiplier: 1

Instrument :
 MSVOA_D
 ClientSampled :

Quant Time: Jun 15 07:29:59 2021
 Quant Method : Z:\voasrv\HPCHEM1\MSVOA_D\Method\82D061121S.M
 Quant Title : SW846 8260
 QLast Update : Fri Jun 11 12:50:13 2021
 Response via : Initial Calibration

Compound	R.T.	QIon	Response	Conc	Units	Dev(Min)

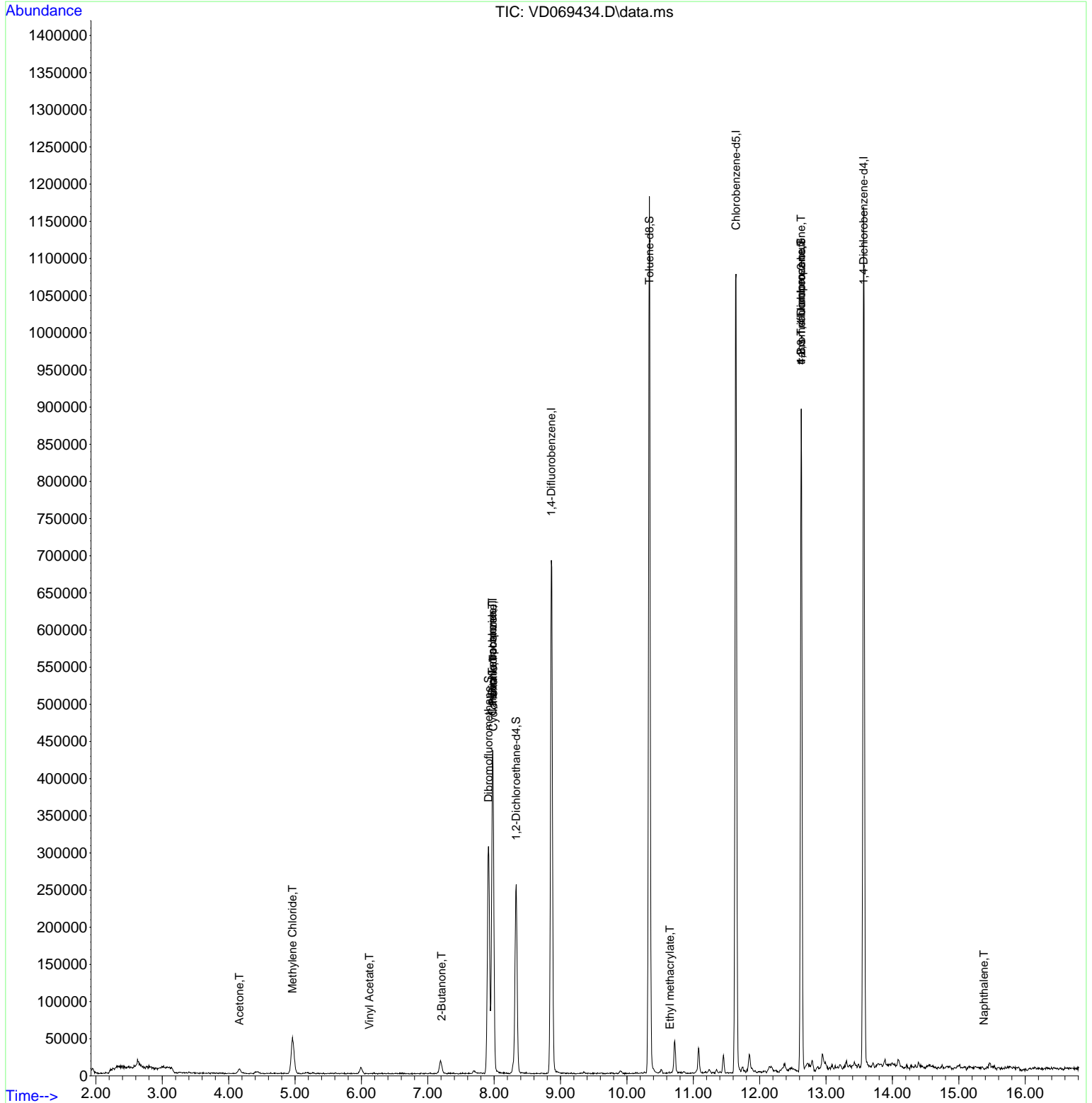
Internal Standards						
1) Pentafluorobenzene	7.979	168	331079	50.00	ug/l	0.00
34) 1,4-Difluorobenzene	8.861	114	629789	50.00	ug/l	0.00
63) Chlorobenzene-d5	11.643	117	676575	50.00	ug/l	0.00
72) 1,4-Dichlorobenzene-d4	13.567	152	323671	50.00	ug/l	0.00
System Monitoring Compounds						
33) 1,2-Dichloroethane-d4	8.332	65	204035	54.63	ug/l	0.00
Spiked Amount	50.000	Range	50 - 163	Recovery	=	109.26%
35) Dibromofluoromethane	7.914	113	226188	47.95	ug/l	0.00
Spiked Amount	50.000	Range	54 - 147	Recovery	=	95.90%
50) Toluene-d8	10.338	98	819596	47.51	ug/l	0.00
Spiked Amount	50.000	Range	49 - 140	Recovery	=	95.02%
62) 4-Bromofluorobenzene	12.626	95	286955	51.84	ug/l	0.00
Spiked Amount	50.000	Range	25 - 144	Recovery	=	103.68%
Target Compounds						
						Qvalue
5) Bromomethane	2.791	94	784	Below Cal		92
16) Acetone	4.162	43	10618	17.17	ug/l	94
18) Methyl Acetate	4.738	43	57	Below Cal	#	46
20) Methylene Chloride	4.961	84	40676	2.54	ug/l	93
23) Vinyl Acetate	6.120	43	53	17.59	ug/l	# 67
25) 2-Butanone	7.208	43	1568	2.03	ug/l	# 45
31) Cyclohexane	7.985	56	6232	1.23	ug/l	# 3
36) 1,1-Dichloropropene	7.973	75	24478	3.73	ug/l	# 48
38) Carbon Tetrachloride	7.973	117	33231	4.68	ug/l	# 15
56) Ethyl methacrylate	10.649	69	55	2.84	ug/l	# 1
76) 1,2,3-Trichloropropane	12.626	75	139305	42.45	ug/l	# 1
81) trans-1,4-Dichloro-2-b...	12.626	75	139305	113.25	ug/l	# 18
95) Naphthalene	15.379	128	72	3.58	ug/l	# 69

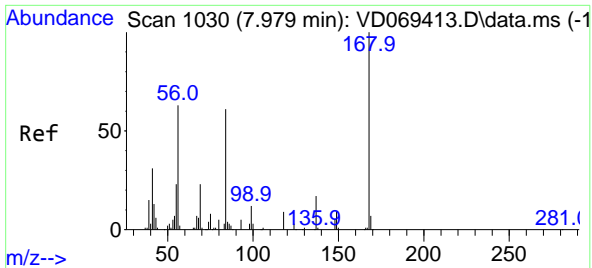
(#) = qualifier out of range (m) = manual integration (+) = signals summed

Data Path : Z:\voasrv\HPCHEM1\MSVOA_D\Data\VD061421\
 Data File : VD069434.D
 Acq On : 14 Jun 2021 18:42
 Operator : VA/SY
 Sample : M2709-06
 Misc : 5.03G/5.00ml/MSVOA_D/SOIL
 ALS Vial : 19 Sample Multiplier: 1

Instrument :
 MSVOA_D
 ClientSampled :

Quant Time: Jun 15 07:29:59 2021
 Quant Method : Z:\voasrv\HPCHEM1\MSVOA_D\Method\82D061121S.M
 Quant Title : SW846 8260
 QLast Update : Fri Jun 11 12:50:13 2021
 Response via : Initial Calibration

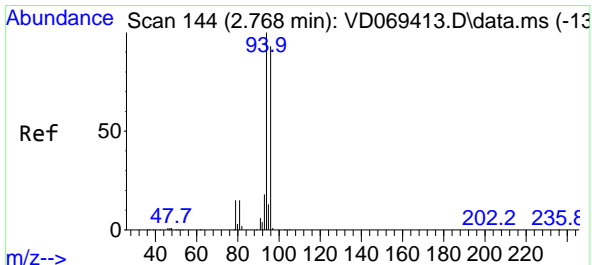
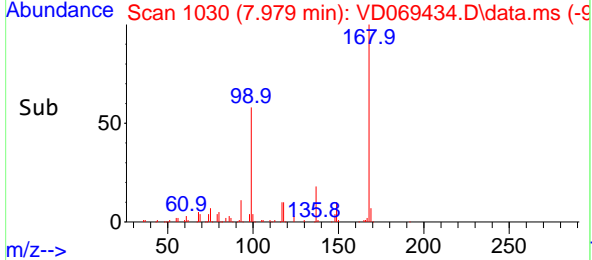
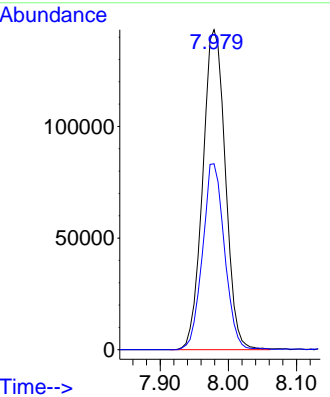
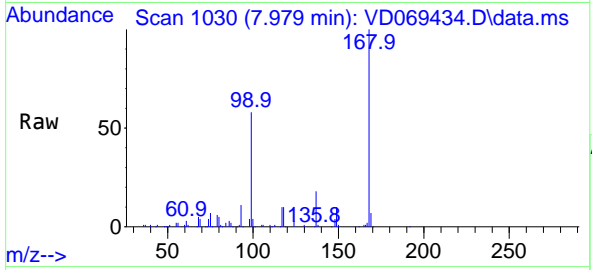




#1
 Pentafluorobenzene
 Concen: 50.00 ug/l
 RT: 7.979 min Scan# 1030
 Delta R.T. -0.000 min
 Lab File: VD069434.D
 Acq: 14 Jun 2021 18:42

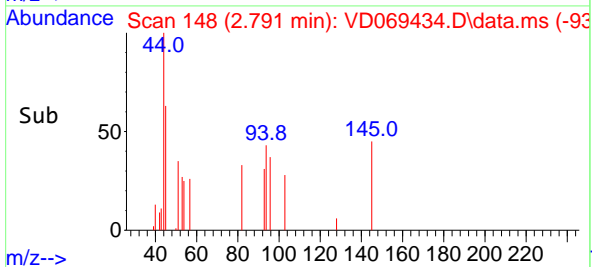
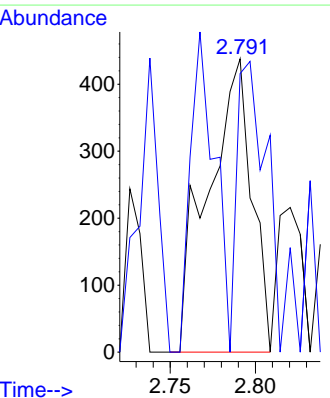
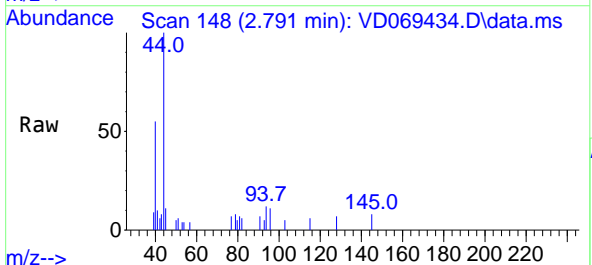
Instrument :
 MSVOA_D
 ClientSampled :

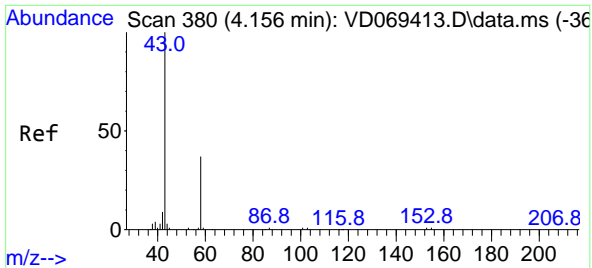
Tgt Ion:168 Resp: 331079
 Ion Ratio Lower Upper
 168 100
 99 58.1 46.2 69.2



#5
 Bromomethane
 Concen: Below Cal
 RT: 2.791 min Scan# 148
 Delta R.T. 0.023 min
 Lab File: VD069434.D
 Acq: 14 Jun 2021 18:42

Tgt Ion: 94 Resp: 784
 Ion Ratio Lower Upper
 94 100
 96 95.0 70.3 105.5

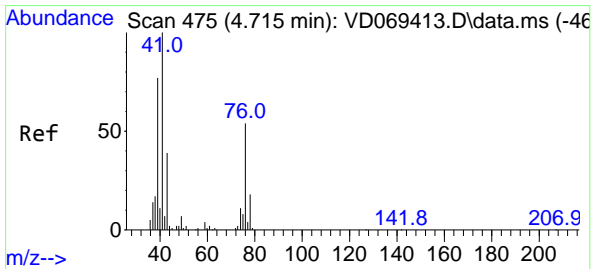
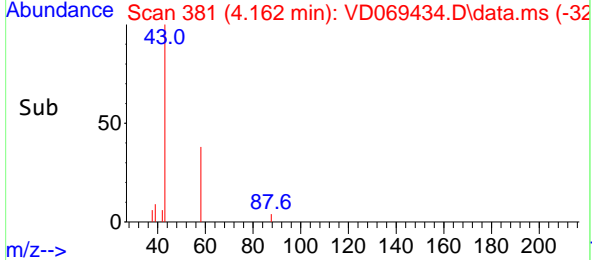
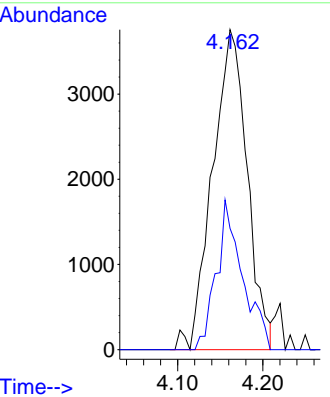
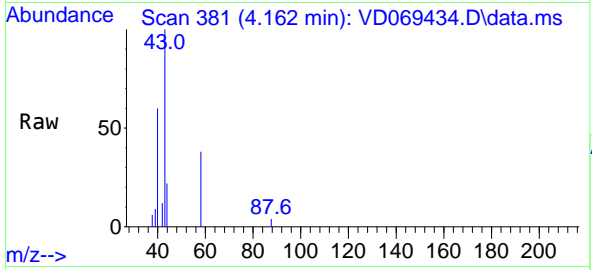




#16
 Acetone
 Concen: 17.17 ug/l
 RT: 4.162 min Scan# 381
 Delta R.T. 0.006 min
 Lab File: VD069434.D
 Acq: 14 Jun 2021 18:42

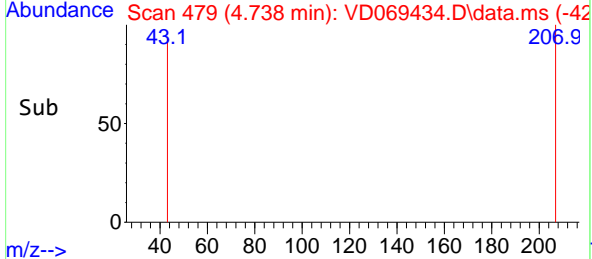
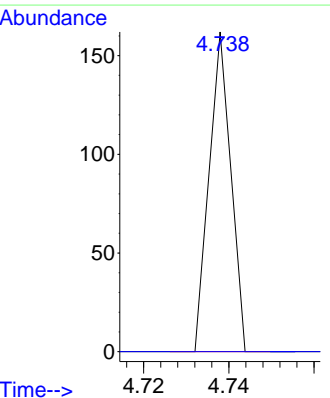
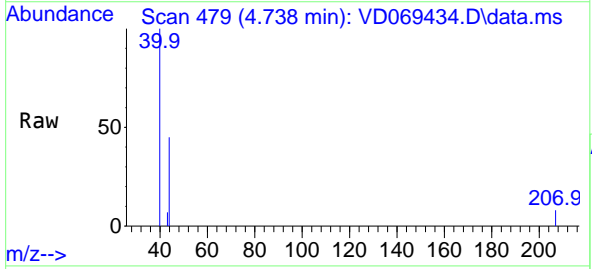
Instrument :
 MSVOA_D
 ClientSampled :

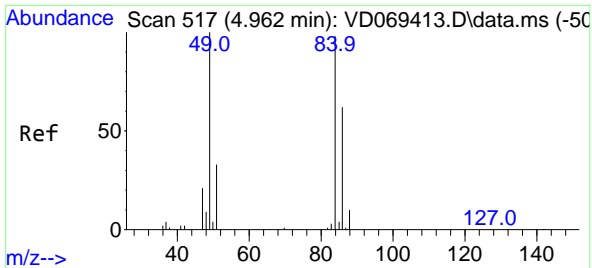
Tgt Ion: 43 Resp: 10618
 Ion Ratio Lower Upper
 43 100
 58 37.9 27.5 41.3



#18
 Methyl Acetate
 Concen: Below Cal
 RT: 4.738 min Scan# 479
 Delta R.T. 0.023 min
 Lab File: VD069434.D
 Acq: 14 Jun 2021 18:42

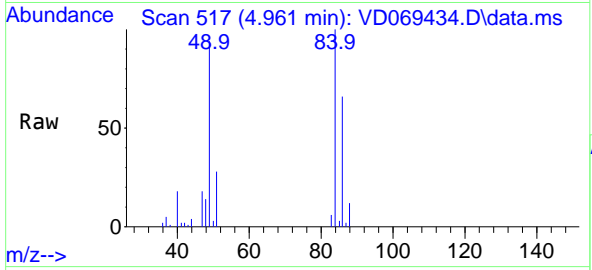
Tgt Ion: 43 Resp: 57
 Ion Ratio Lower Upper
 43 100
 74 0.0 22.8 34.2#





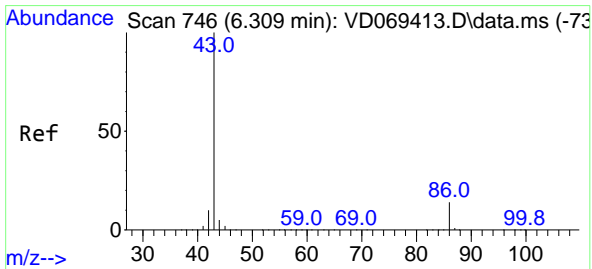
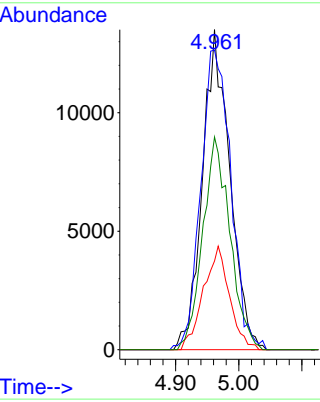
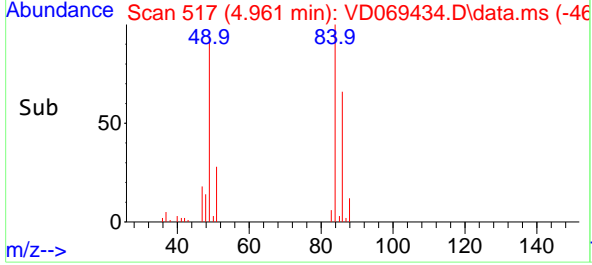
#20
 Methylene Chloride
 Concen: 2.54 ug/l
 RT: 4.961 min Scan# 517
 Delta R.T. -0.001 min
 Lab File: VD069434.D
 Acq: 14 Jun 2021 18:42

Instrument :
 MSVOA_D
 ClientSampled :

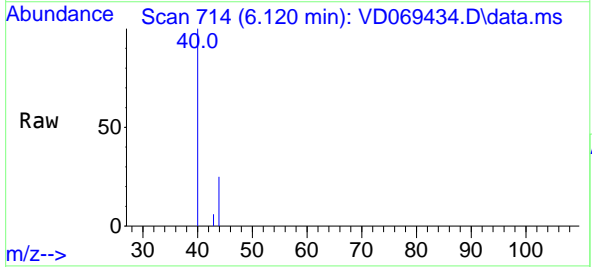


Tgt Ion: 84 Resp: 40676

Ion	Ratio	Lower	Upper
84	100		
49	93.6	83.7	125.5
51	27.7	26.4	39.6
86	66.5	52.8	79.2

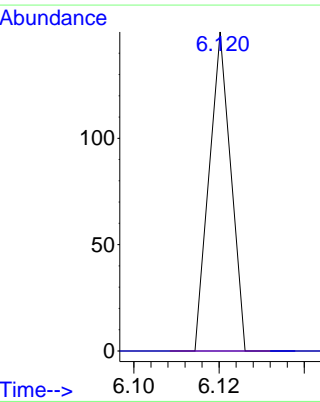
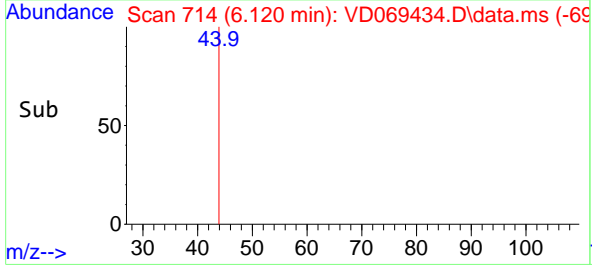


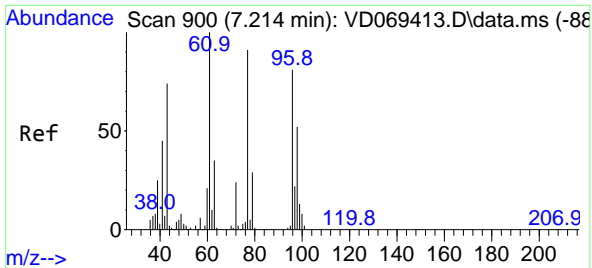
#23
 Vinyl Acetate
 Concen: 17.59 ug/l
 RT: 6.120 min Scan# 714
 Delta R.T. -0.189 min
 Lab File: VD069434.D
 Acq: 14 Jun 2021 18:42



Tgt Ion: 43 Resp: 53

Ion	Ratio	Lower	Upper
43	100		
86	0.0	10.5	15.7#

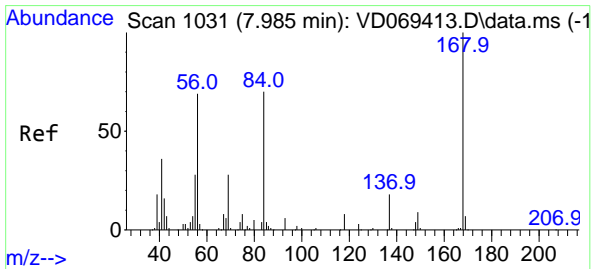
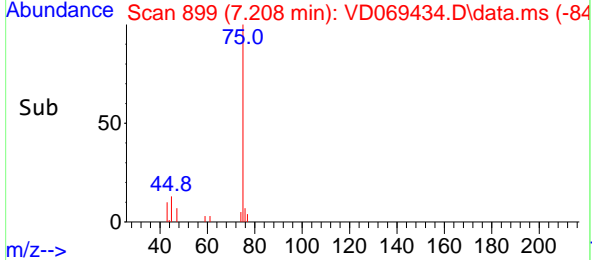
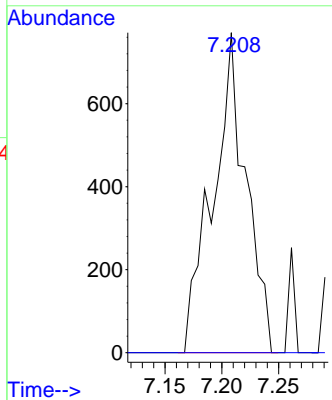
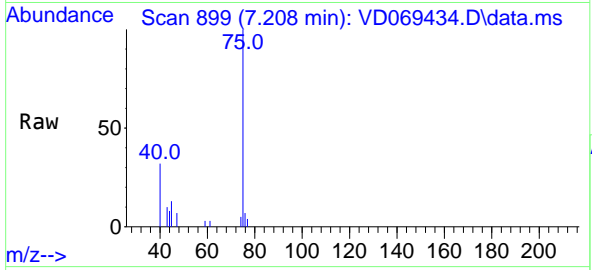




#25
 2-Butanone
 Concen: 2.03 ug/l
 RT: 7.208 min Scan# 899
 Delta R.T. -0.006 min
 Lab File: VD069434.D
 Acq: 14 Jun 2021 18:42

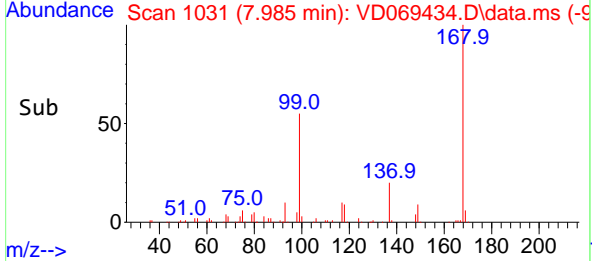
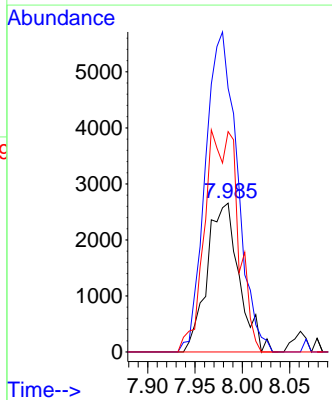
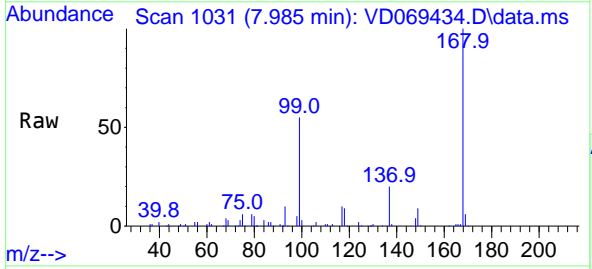
Instrument :
 MSVOA_D
 ClientSampled :

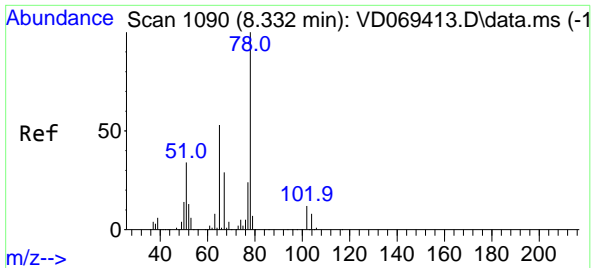
Tgt Ion: 43 Resp: 1568
 Ion Ratio Lower Upper
 43 100
 72 0.0 23.9 35.9#



#31
 Cyclohexane
 Concen: 1.23 ug/l
 RT: 7.985 min Scan# 1031
 Delta R.T. -0.000 min
 Lab File: VD069434.D
 Acq: 14 Jun 2021 18:42

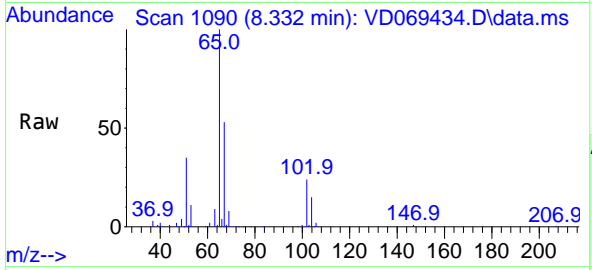
Tgt Ion: 56 Resp: 6232
 Ion Ratio Lower Upper
 56 100
 69 177.2 29.0 43.4#
 84 148.1 81.1 121.7#



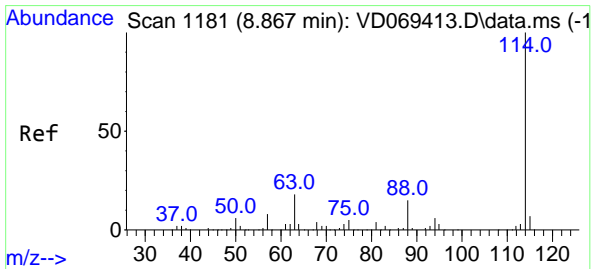
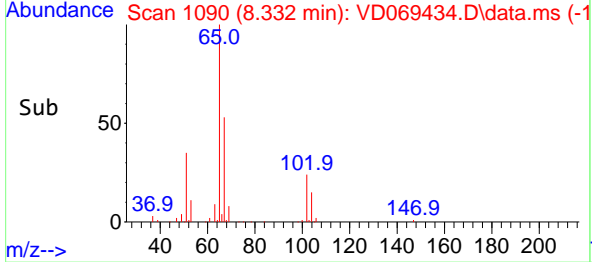
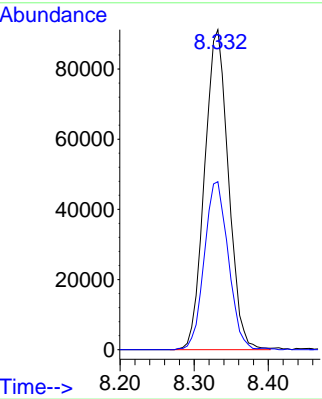


#33
 1,2-Dichloroethane-d4
 Concen: 54.63 ug/l
 RT: 8.332 min Scan# 1090
 Delta R.T. -0.000 min
 Lab File: VD069434.D
 Acq: 14 Jun 2021 18:42

Instrument :
 MSVOA_D
 ClientSampled :

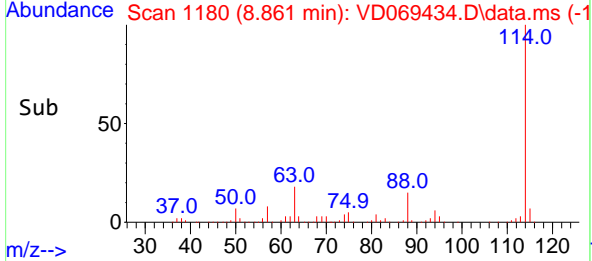
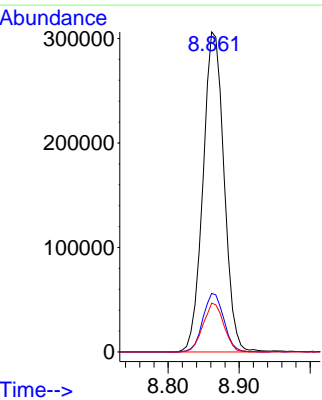
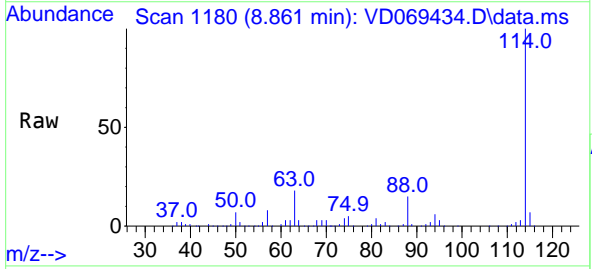


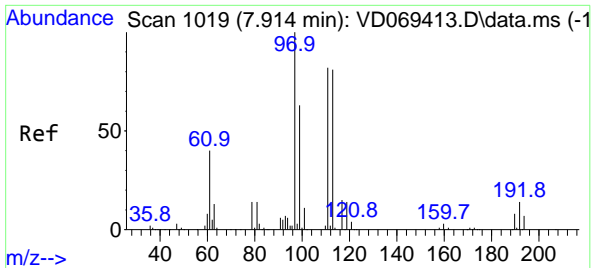
Tgt Ion: 65 Resp: 204035
 Ion Ratio Lower Upper
 65 100
 67 52.7 0.0 105.8



#34
 1,4-Difluorobenzene
 Concen: 50.00 ug/l
 RT: 8.861 min Scan# 1180
 Delta R.T. -0.006 min
 Lab File: VD069434.D
 Acq: 14 Jun 2021 18:42

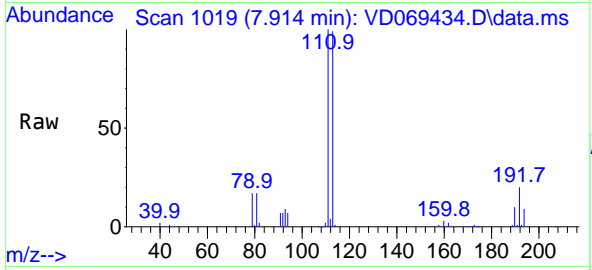
Tgt Ion: 114 Resp: 629789
 Ion Ratio Lower Upper
 114 100
 63 18.3 0.0 35.6
 88 15.2 0.0 31.2



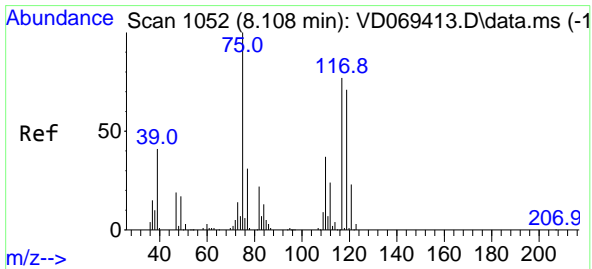
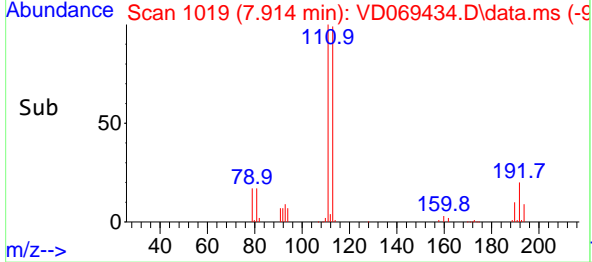
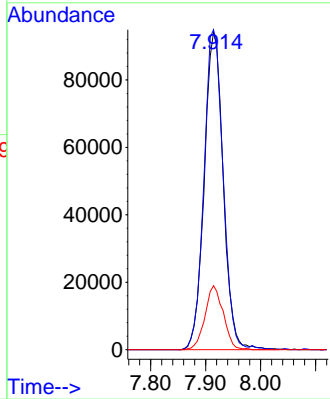


#35
 Dibromofluoromethane
 Concen: 47.95 ug/l
 RT: 7.914 min Scan# 1019
 Delta R.T. 0.000 min
 Lab File: VD069434.D
 Acq: 14 Jun 2021 18:42

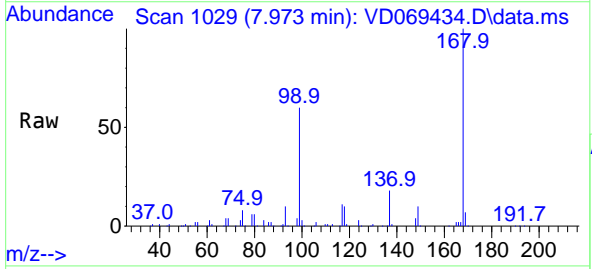
Instrument :
 MSVOA_D
 ClientSampled :



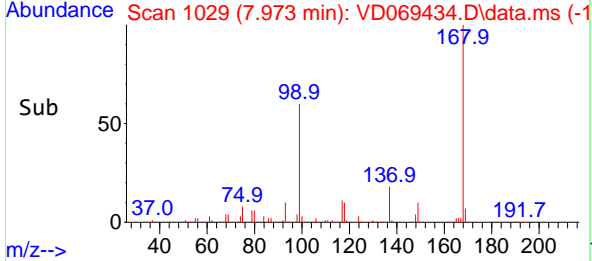
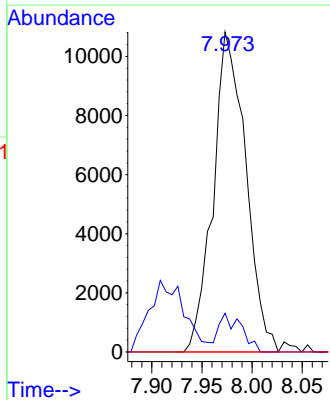
Tgt Ion:113 Resp: 226188
 Ion Ratio Lower Upper
 113 100
 111 101.2 83.0 124.6
 192 19.4 15.1 22.7

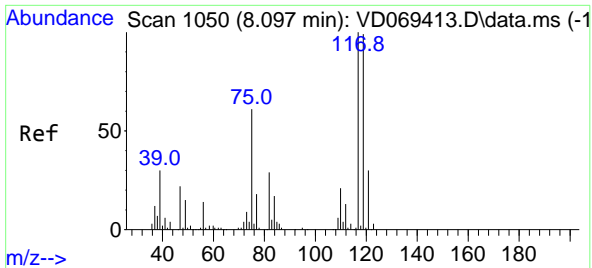


#36
 1,1-Dichloropropene
 Concen: 3.73 ug/l
 RT: 7.973 min Scan# 1029
 Delta R.T. -0.135 min
 Lab File: VD069434.D
 Acq: 14 Jun 2021 18:42



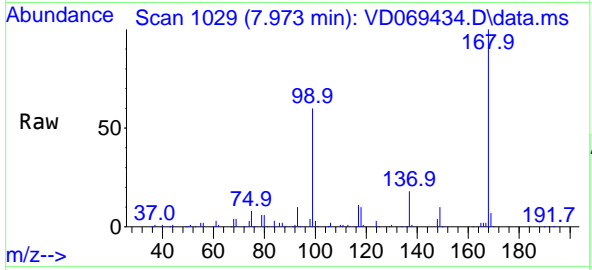
Tgt Ion: 75 Resp: 24478
 Ion Ratio Lower Upper
 75 100
 110 8.2 18.4 55.2#
 77 0.0 24.9 37.3#





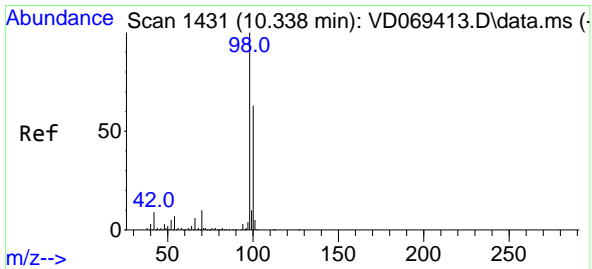
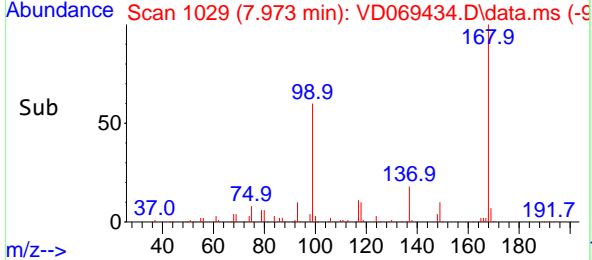
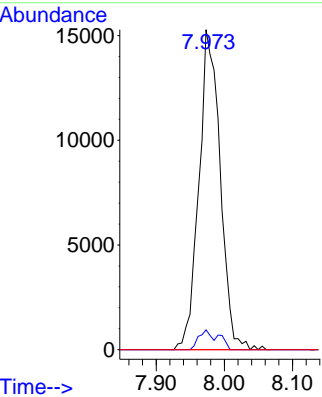
#38
 Carbon Tetrachloride
 Concen: 4.68 ug/l
 RT: 7.973 min Scan# 1029
 Delta R.T. -0.124 min
 Lab File: VD069434.D
 Acq: 14 Jun 2021 18:42

Instrument :
 MSVOA_D
 ClientSampled :

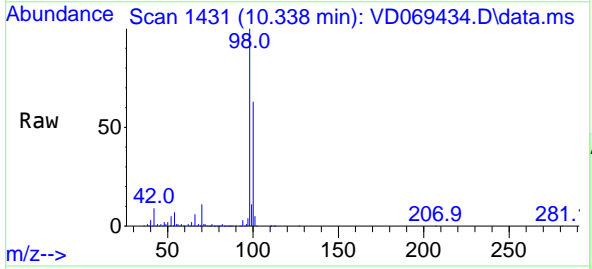


Tgt Ion:117 Resp: 33231

Ion	Ratio	Lower	Upper
117	100		
119	6.2	79.4	119.2#
121	0.0	26.1	39.1#

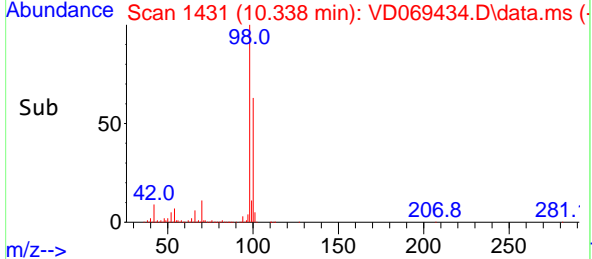
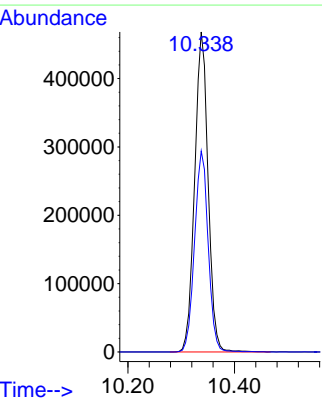


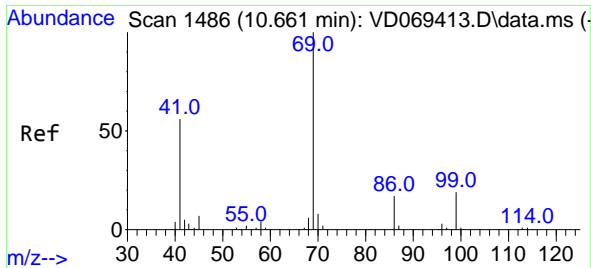
#50
 Toluene-d8
 Concen: 47.51 ug/l
 RT: 10.338 min Scan# 1431
 Delta R.T. -0.000 min
 Lab File: VD069434.D
 Acq: 14 Jun 2021 18:42



Tgt Ion: 98 Resp: 819596

Ion	Ratio	Lower	Upper
98	100		
100	63.5	52.1	78.1



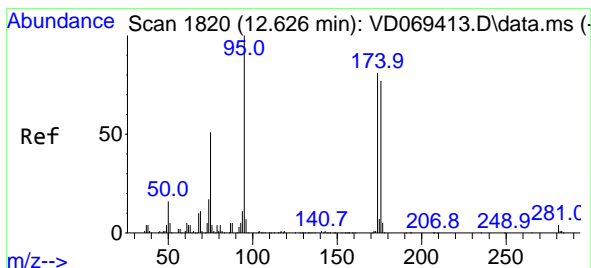
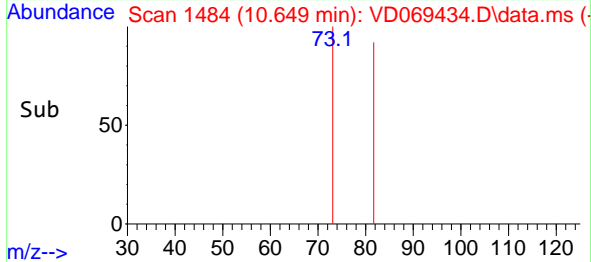
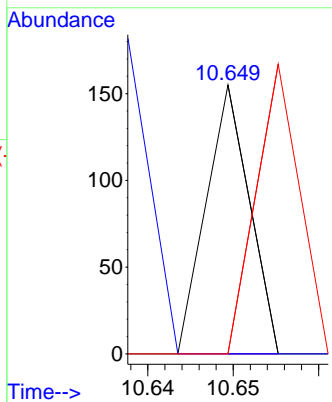
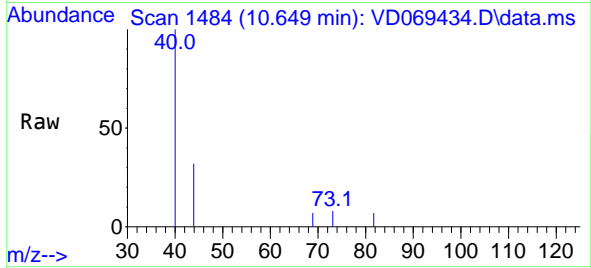


#56
 Ethyl methacrylate
 Concen: 2.84 ug/l
 RT: 10.649 min Scan# 1484
 Delta R.T. -0.012 min
 Lab File: VD069434.D
 Acq: 14 Jun 2021 18:42

Instrument :
 MSVOA_D
 ClientSampled :

Tgt Ion: 69 Resp: 55

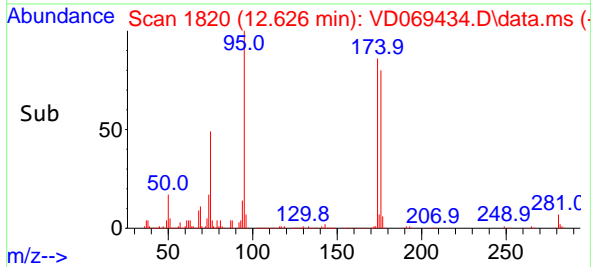
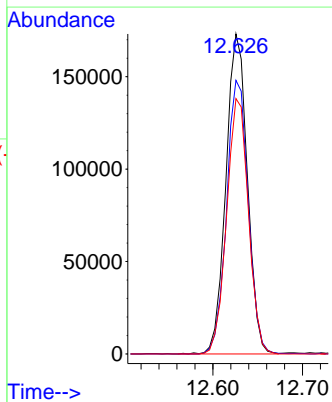
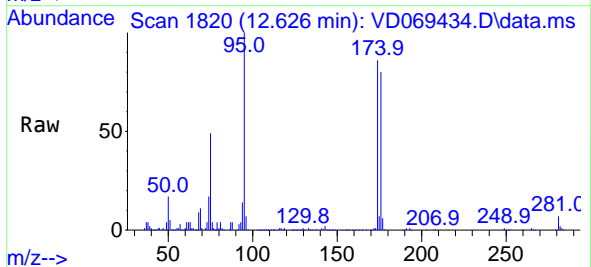
Ion	Ratio	Lower	Upper
69	100		
41	0.0	45.4	68.2#
39	107.3	21.7	32.5#

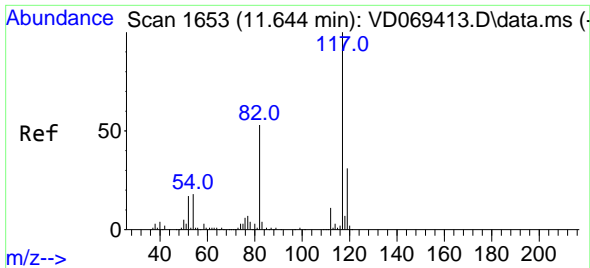


#62
 4-Bromofluorobenzene
 Concen: 51.84 ug/l
 RT: 12.626 min Scan# 1820
 Delta R.T. -0.000 min
 Lab File: VD069434.D
 Acq: 14 Jun 2021 18:42

Tgt Ion: 95 Resp: 286955

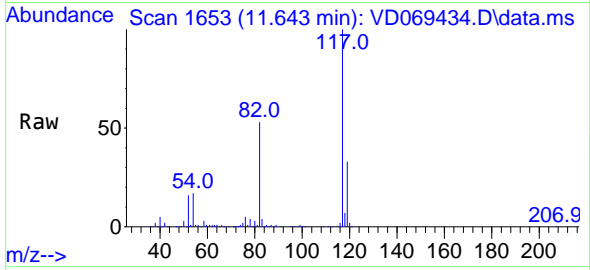
Ion	Ratio	Lower	Upper
95	100		
174	86.5	0.0	162.8
176	81.0	0.0	154.4





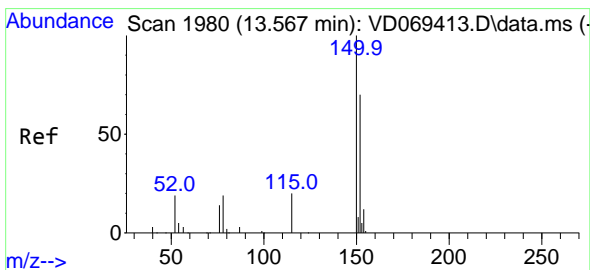
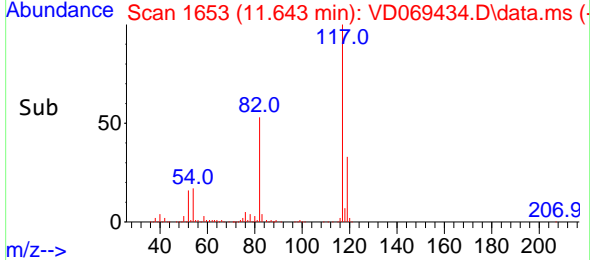
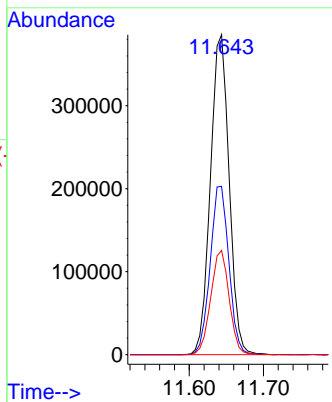
#63
 Chlorobenzene-d5
 Concen: 50.00 ug/l
 RT: 11.643 min Scan# 1653
 Delta R.T. -0.001 min
 Lab File: VD069434.D
 Acq: 14 Jun 2021 18:42

Instrument :
 MSVOA_D
 ClientSampled :

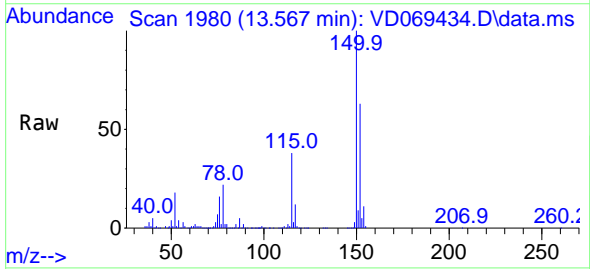


Tgt Ion:117 Resp: 676575

Ion	Ratio	Lower	Upper
117	100		
82	52.6	43.3	64.9
119	32.6	25.3	37.9

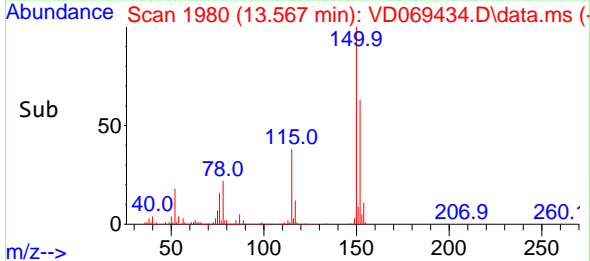
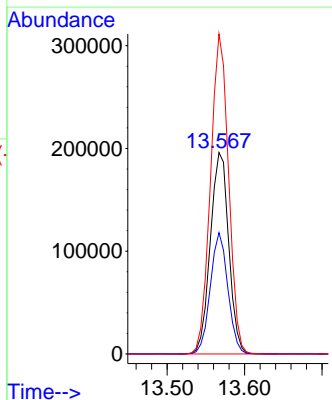


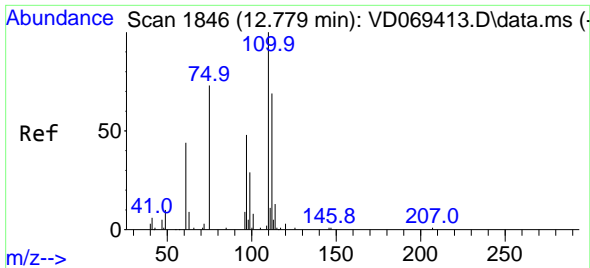
#72
 1,4-Dichlorobenzene-d4
 Concen: 50.00 ug/l
 RT: 13.567 min Scan# 1980
 Delta R.T. -0.000 min
 Lab File: VD069434.D
 Acq: 14 Jun 2021 18:42



Tgt Ion:152 Resp: 323671

Ion	Ratio	Lower	Upper
152	100		
115	57.4	29.4	88.3
150	155.7	0.0	355.0

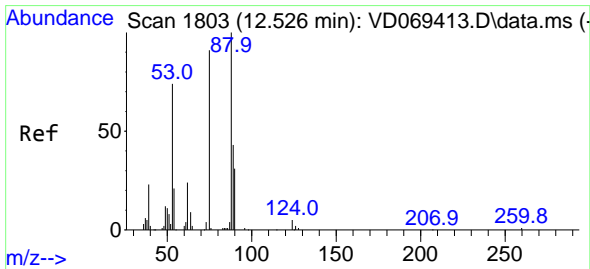
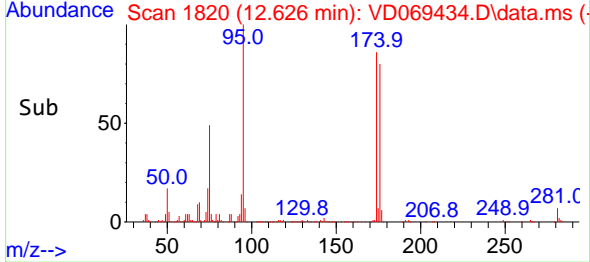
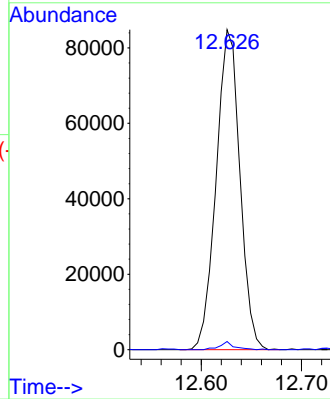
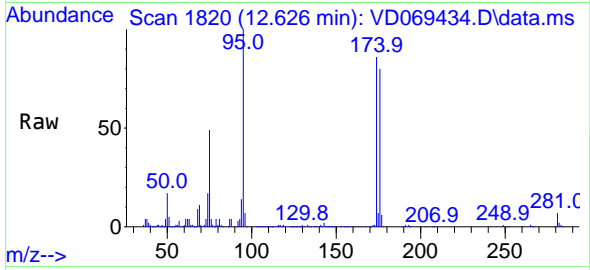




#76
 1,2,3-Trichloropropane
 Concen: 42.45 ug/l
 RT: 12.626 min Scan# 1820
 Delta R.T. -0.153 min
 Lab File: VD069434.D
 Acq: 14 Jun 2021 18:42

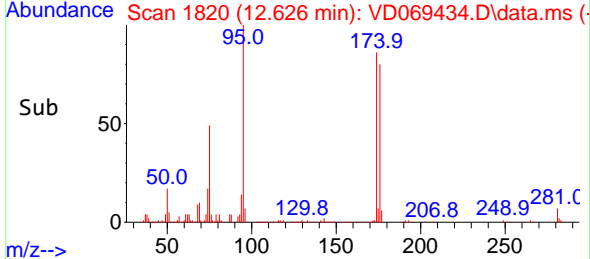
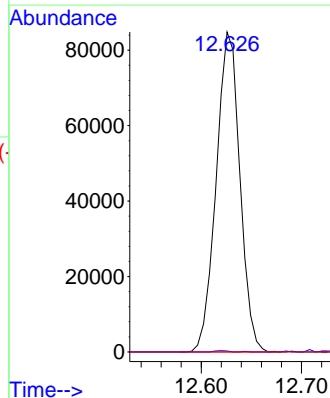
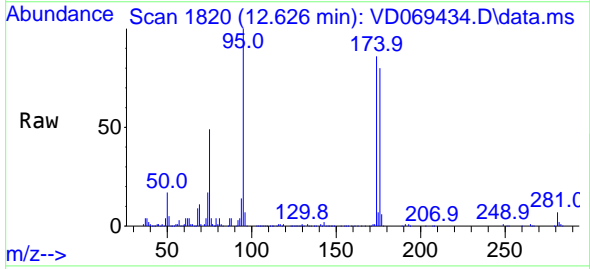
Instrument :
 MSVOA_D
 ClientSampled :

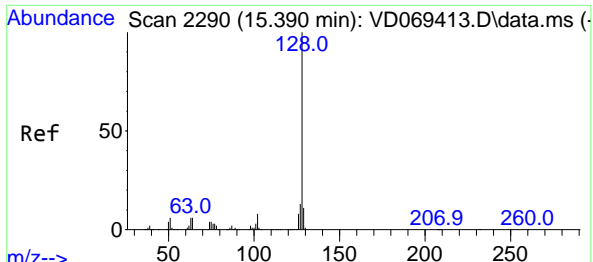
Tgt Ion: 75 Resp: 139305
 Ion Ratio Lower Upper
 75 100
 77 1.6 183.8 551.2#



#81
 trans-1,4-Dichloro-2-butene
 Concen: 113.25 ug/l
 RT: 12.626 min Scan# 1820
 Delta R.T. 0.100 min
 Lab File: VD069434.D
 Acq: 14 Jun 2021 18:42

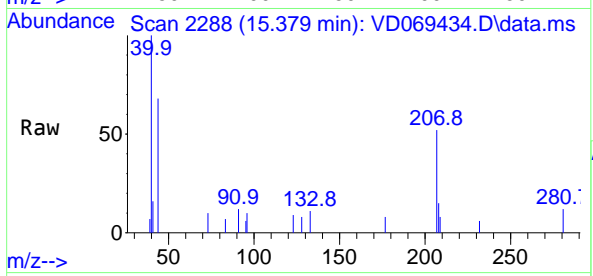
Tgt Ion: 75 Resp: 139305
 Ion Ratio Lower Upper
 75 100
 53 0.2 62.6 94.0#
 89 0.0 35.6 53.4#





#95
 Naphthalene
 Concen: 3.58 ug/l
 RT: 15.379 min Scan# 2288
 Delta R.T. -0.011 min
 Lab File: VD069434.D
 Acq: 14 Jun 2021 18:42

Instrument :
 MSVOA_D
 ClientSampled :



Tgt Ion:128 Resp: 72

Ion	Ratio	Lower	Upper
128	100		
127	0.0	10.4	15.6#
129	0.0	8.8	13.2#

