

Data Path : Z:\voasrv\HPCHEM1\MSVOA_D\Data\VD061721\
 Data File : VD069487.D
 Acq On : 17 Jun 2021 18:41
 Operator : VA/SY
 Sample : M2735-01
 Misc : 6.59G/5.00ml/MSVOA_D/SOIL
 ALS Vial : 19 Sample Multiplier: 1

Instrument :
 MSVOA_D
 ClientSampled :
 124027

Quant Time: Jun 18 01:28:39 2021
 Quant Method : Z:\voasrv\HPCHEM1\MSVOA_D\Method\82D061121S.M
 Quant Title : SW846 8260
 QLast Update : Fri Jun 11 12:50:13 2021
 Response via : Initial Calibration

Compound	R.T.	QIon	Response	Conc	Units	Dev(Min)

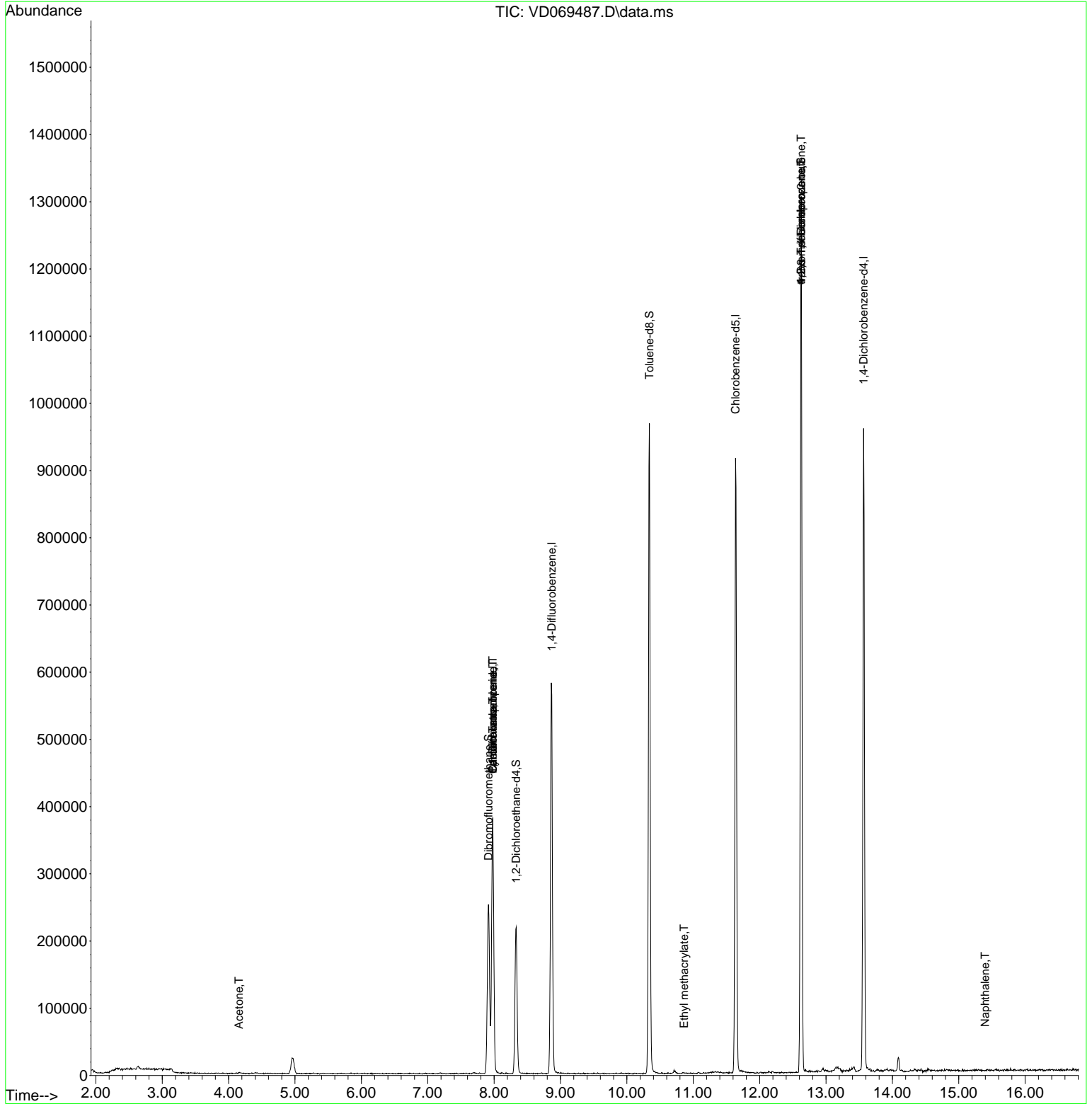
Internal Standards						
1) Pentafluorobenzene	7.979	168	279209	50.000	ug/l	0.00
34) 1,4-Difluorobenzene	8.867	114	512960	50.000	ug/l	0.00
63) Chlorobenzene-d5	11.638	117	557012	50.000	ug/l	0.00
72) 1,4-Dichlorobenzene-d4	13.567	152	258461	50.000	ug/l	0.00
System Monitoring Compounds						
33) 1,2-Dichloroethane-d4	8.332	65	173102	54.954	ug/l	0.00
Spiked Amount	50.000	Range 50 - 163	Recovery	=	109.900%	
35) Dibromofluoromethane	7.914	113	184466	48.012	ug/l	0.00
Spiked Amount	50.000	Range 54 - 147	Recovery	=	96.020%	
50) Toluene-d8	10.338	98	668970	47.606	ug/l	0.00
Spiked Amount	50.000	Range 49 - 140	Recovery	=	95.220%	
62) 4-Bromofluorobenzene	12.626	95	253440	56.209	ug/l	0.00
Spiked Amount	50.000	Range 25 - 144	Recovery	=	112.420%	
Target Compounds						
						Qvalue
5) Bromomethane	2.774	94	184	Below Cal	#	37
16) Acetone	4.156	43	1568	3.007	ug/l #	83
18) Methyl Acetate	4.797	43	72	Below Cal	#	46
20) Methylene Chloride	4.973	84	19299	Below Cal	#	89
31) Cyclohexane	7.979	56	6018	1.406	ug/l #	20
36) 1,1-Dichloropropene	7.979	75	22288	4.173	ug/l #	48
38) Carbon Tetrachloride	7.979	117	29821	5.154	ug/l #	14
56) Ethyl methacrylate	10.861	69	145	2.863	ug/l #	77
76) 1,2,3-Trichloropropane	12.626	75	127563	48.682	ug/l #	1
81) trans-1,4-Dichloro-2-b...	12.626	75	127563	129.870	ug/l #	19
95) Naphthalene	15.396	128	494	3.622	ug/l #	69

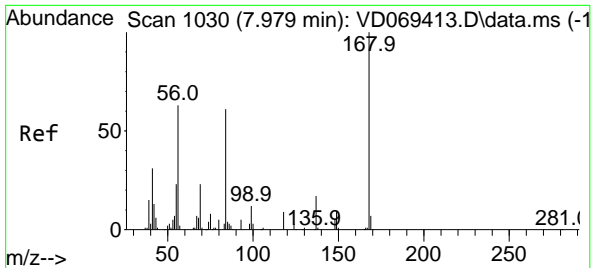
(#) = qualifier out of range (m) = manual integration (+) = signals summed

Data Path : Z:\voasrv\HPCHEM1\MSVOA_D\Data\VD061721\
 Data File : VD069487.D
 Acq On : 17 Jun 2021 18:41
 Operator : VA/SY
 Sample : M2735-01
 Misc : 6.59G/5.00ml/MSVOA_D/SOIL
 ALS Vial : 19 Sample Multiplier: 1

Instrument :
 MSVOA_D
 Client Sampled :
 124027

Quant Time: Jun 18 01:28:39 2021
 Quant Method : Z:\voasrv\HPCHEM1\MSVOA_D\Method\82D061121S.M
 Quant Title : SW846 8260
 QLast Update : Fri Jun 11 12:50:13 2021
 Response via : Initial Calibration

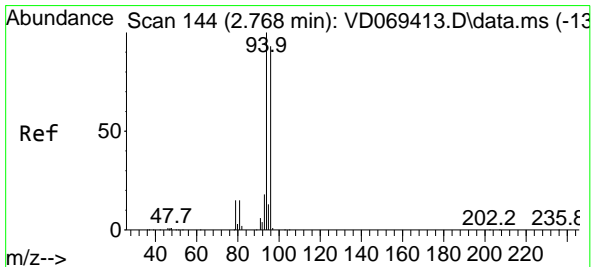
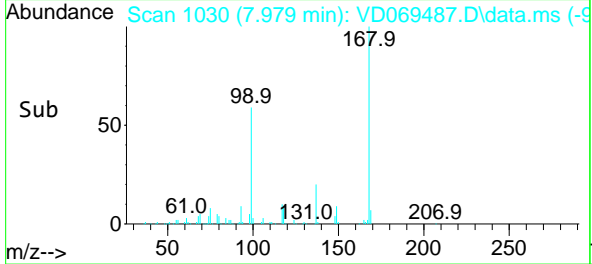
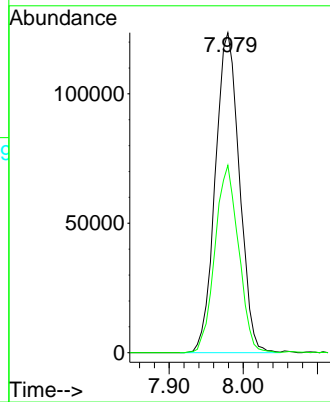
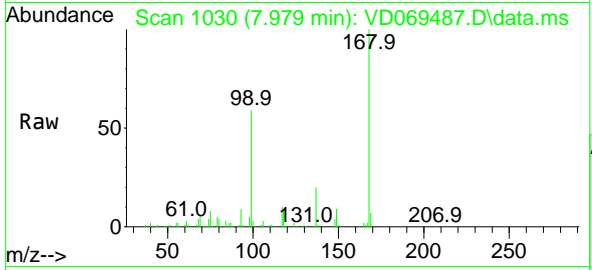




#1
 Pentafluorobenzene
 Concen: 50.000 ug/l
 RT: 7.979 min Scan# 1030
 Delta R.T. 0.000 min
 Lab File: VD069487.D
 Acq: 17 Jun 2021 18:41

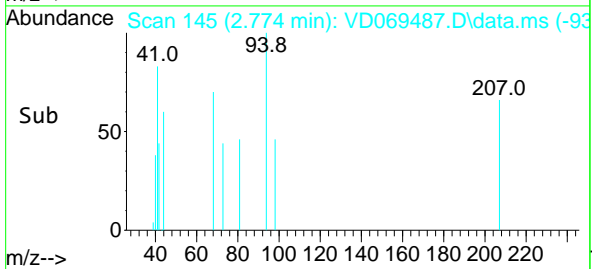
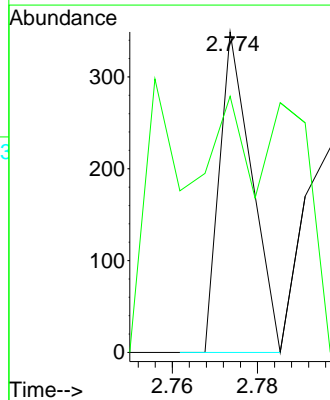
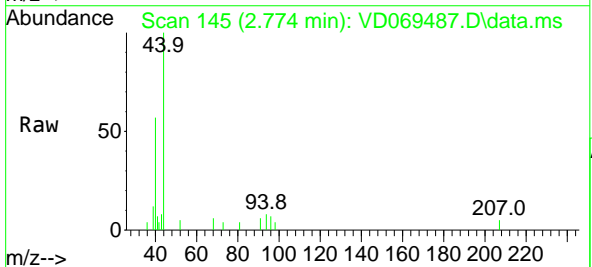
Instrument :
 MSVOA_D
 ClientSampled :
 124027

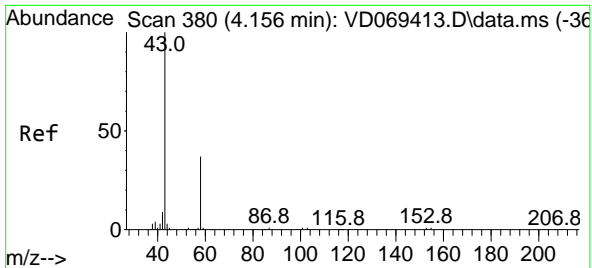
Tgt Ion:168 Resp: 279209
 Ion Ratio Lower Upper
 168 100
 99 58.5 46.2 69.2



#5
 Bromomethane
 Concen: Below Cal
 RT: 2.774 min Scan# 145
 Delta R.T. 0.006 min
 Lab File: VD069487.D
 Acq: 17 Jun 2021 18:41

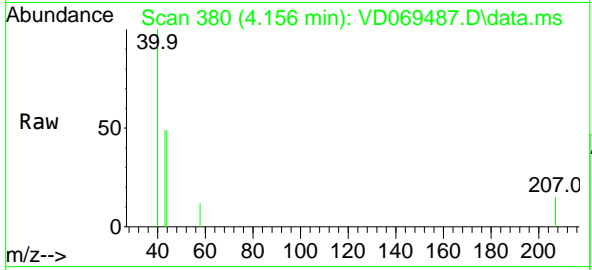
Tgt Ion: 94 Resp: 184
 Ion Ratio Lower Upper
 94 100
 96 29.5 70.3 105.5#



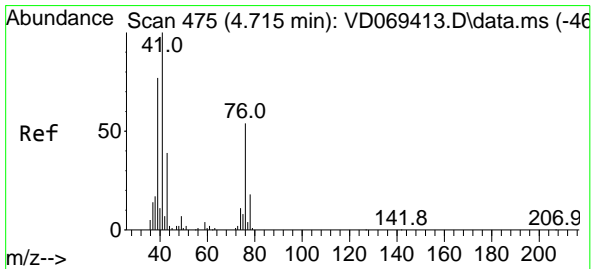
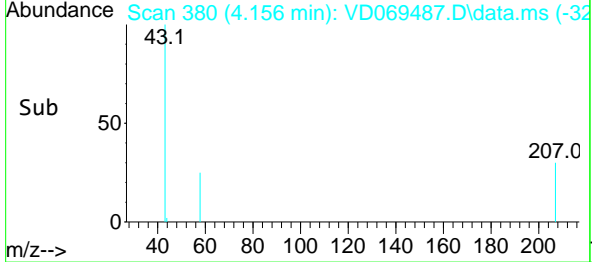
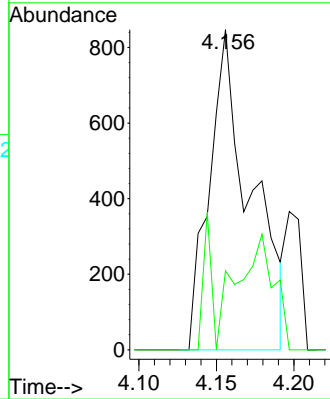


#16
 Acetone
 Concen: 3.007 ug/l
 RT: 4.156 min Scan# 380
 Delta R.T. -0.000 min
 Lab File: VD069487.D
 Acq: 17 Jun 2021 18:41

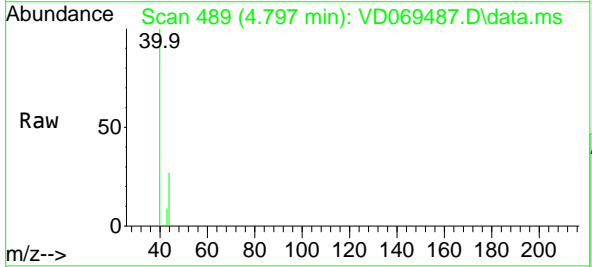
Instrument :
 MSVOA_D
 ClientSampled :
 124027



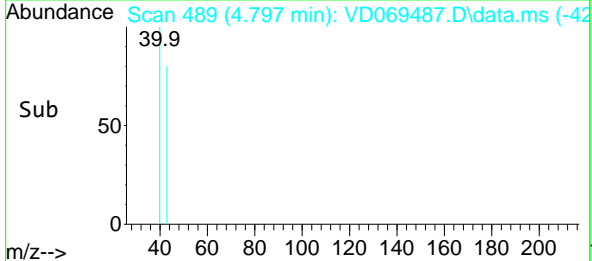
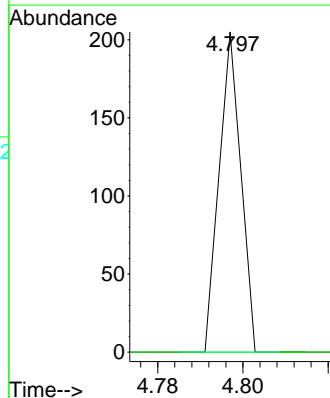
Tgt Ion: 43 Resp: 1568
 Ion Ratio Lower Upper
 43 100
 58 24.7 27.5 41.3#

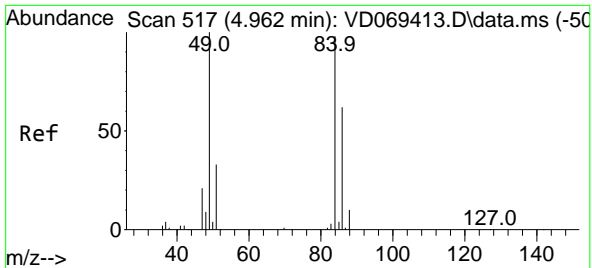


#18
 Methyl Acetate
 Concen: Below Cal
 RT: 4.797 min Scan# 489
 Delta R.T. 0.082 min
 Lab File: VD069487.D
 Acq: 17 Jun 2021 18:41



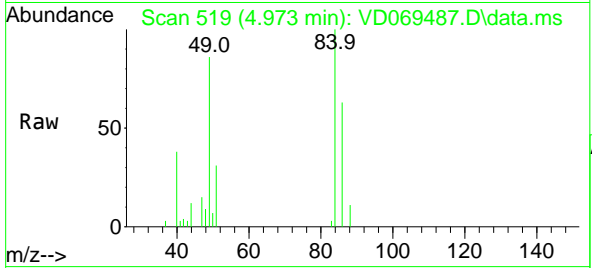
Tgt Ion: 43 Resp: 72
 Ion Ratio Lower Upper
 43 100
 74 0.0 22.8 34.2#





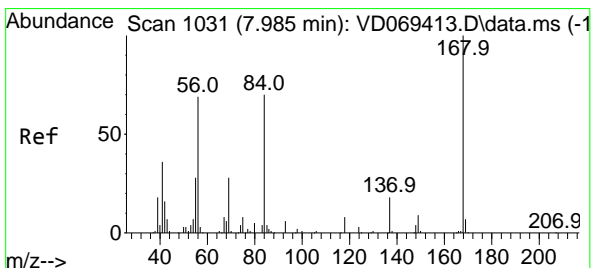
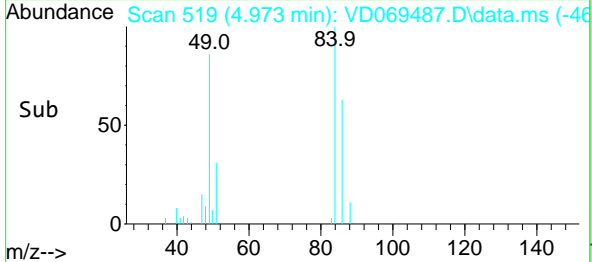
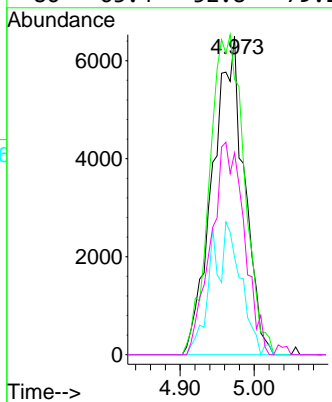
#20
Methylene Chloride
Concen: Below Cal
RT: 4.973 min Scan# 519
Delta R.T. 0.011 min
Lab File: VD069487.D
Acq: 17 Jun 2021 18:41

Instrument :
MSVOA_D
ClientSampled :
124027



Tgt Ion: 84 Resp: 19299

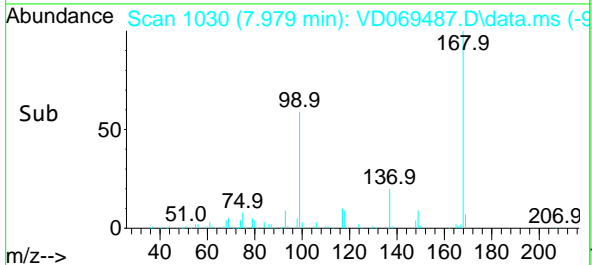
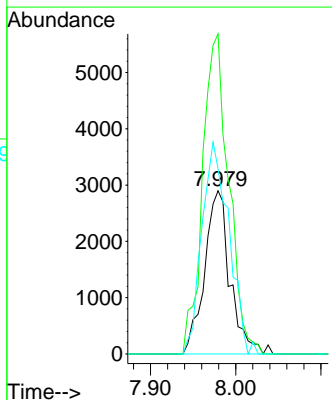
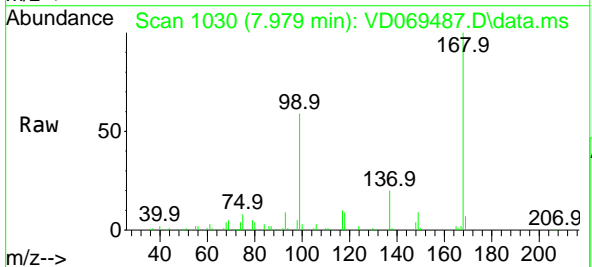
Ion	Ratio	Lower	Upper
84	100		
49	86.5	83.7	125.5
51	30.6	26.4	39.6
86	63.4	52.8	79.2

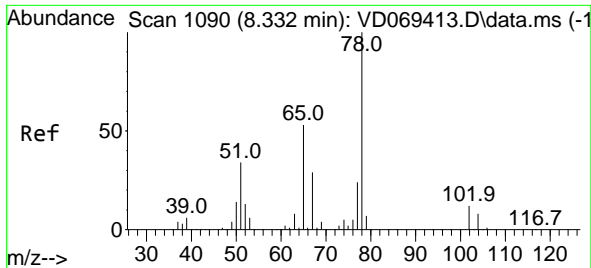


#31
Cyclohexane
Concen: 1.406 ug/l
RT: 7.979 min Scan# 1030
Delta R.T. -0.006 min
Lab File: VD069487.D
Acq: 17 Jun 2021 18:41

Tgt Ion: 56 Resp: 6018

Ion	Ratio	Lower	Upper
56	100		
69	196.0	29.0	43.4#
84	113.4	81.1	121.7

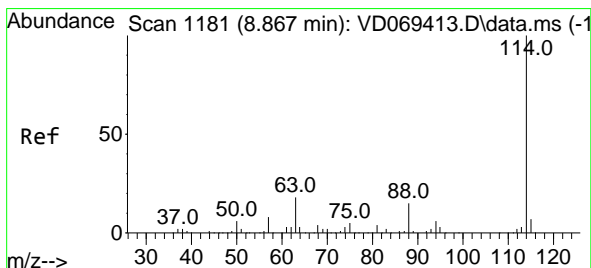
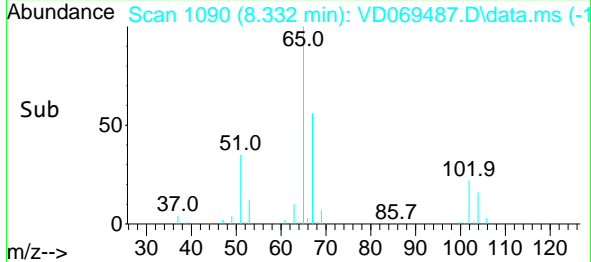
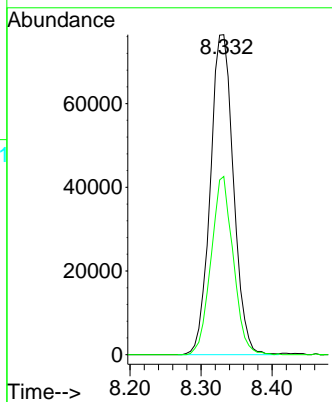
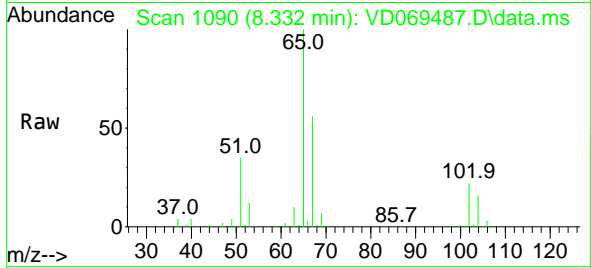




#33
 1,2-Dichloroethane-d4
 Concen: 54.954 ug/l
 RT: 8.332 min Scan# 1090
 Delta R.T. 0.000 min
 Lab File: VD069487.D
 Acq: 17 Jun 2021 18:41

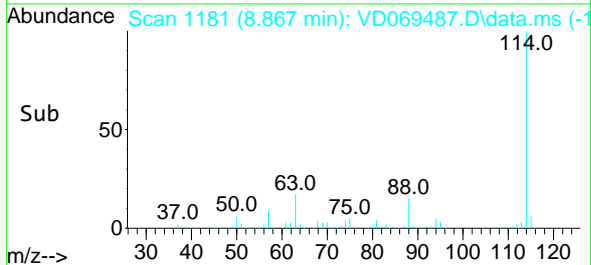
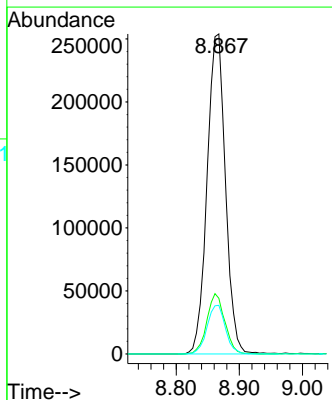
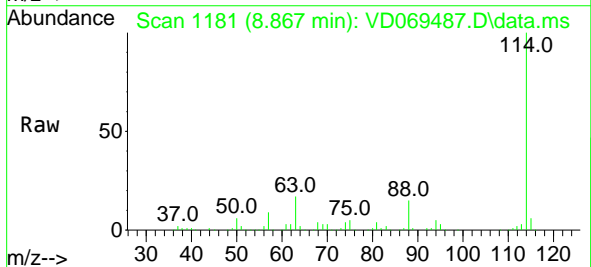
Instrument :
 MSVOA_D
 ClientSampled :
 124027

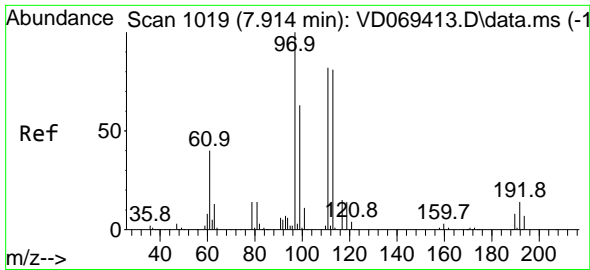
Tgt Ion: 65 Resp: 173102
 Ion Ratio Lower Upper
 65 100
 67 53.3 0.0 105.8



#34
 1,4-Difluorobenzene
 Concen: 50.000 ug/l
 RT: 8.867 min Scan# 1181
 Delta R.T. 0.000 min
 Lab File: VD069487.D
 Acq: 17 Jun 2021 18:41

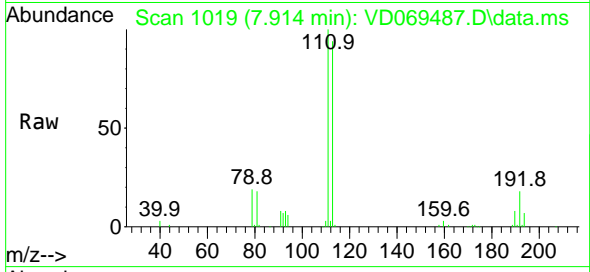
Tgt Ion:114 Resp: 512960
 Ion Ratio Lower Upper
 114 100
 63 17.4 0.0 35.6
 88 15.2 0.0 31.2



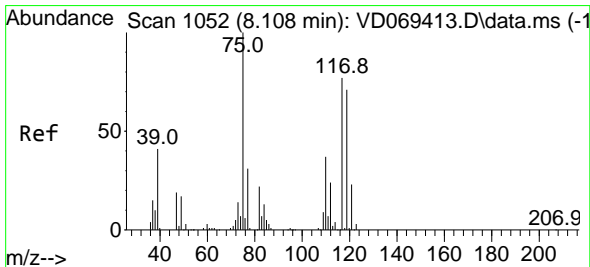
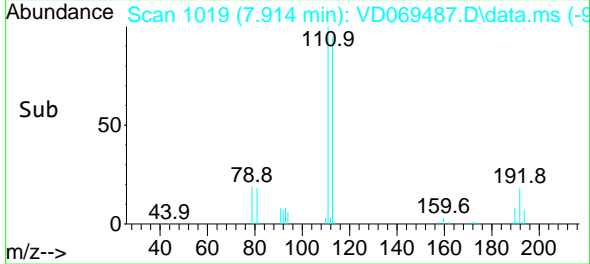
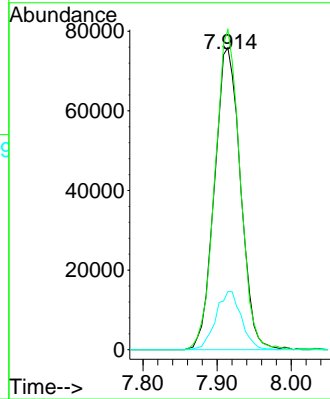


#35
 Dibromofluoromethane
 Concen: 48.012 ug/l
 RT: 7.914 min Scan# 1019
 Delta R.T. 0.000 min
 Lab File: VD069487.D
 Acq: 17 Jun 2021 18:41

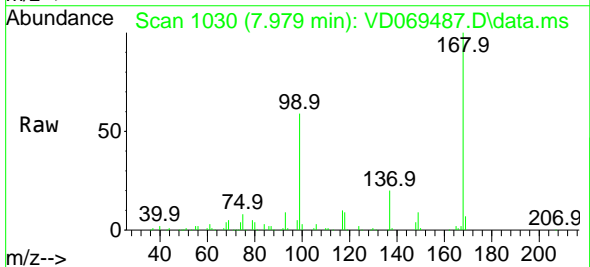
Instrument :
 MSVOA_D
 ClientSampled :
 124027



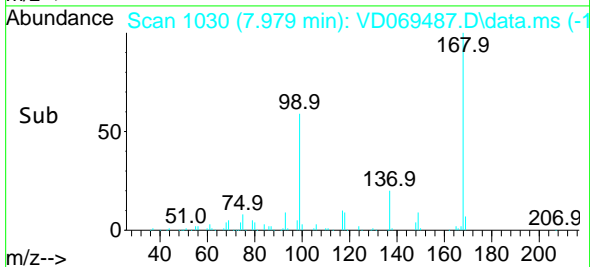
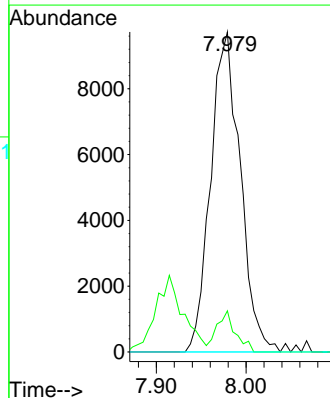
Tgt Ion:113 Resp: 184466
 Ion Ratio Lower Upper
 113 100
 111 102.6 83.0 124.6
 192 19.0 15.1 22.7

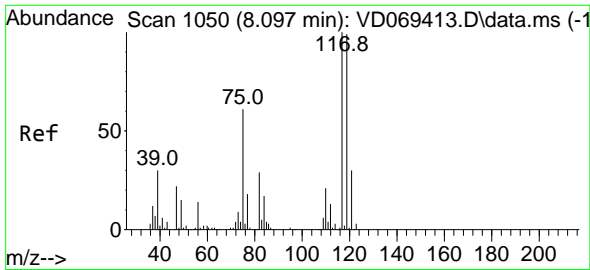


#36
 1,1-Dichloropropene
 Concen: 4.173 ug/l
 RT: 7.979 min Scan# 1030
 Delta R.T. -0.129 min
 Lab File: VD069487.D
 Acq: 17 Jun 2021 18:41



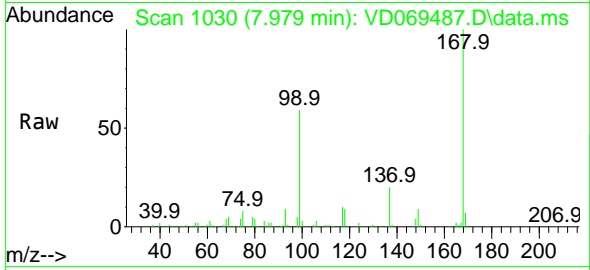
Tgt Ion: 75 Resp: 22288
 Ion Ratio Lower Upper
 75 100
 110 8.1 18.4 55.2#
 77 0.0 24.9 37.3#





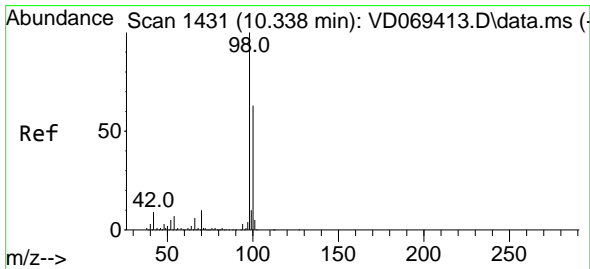
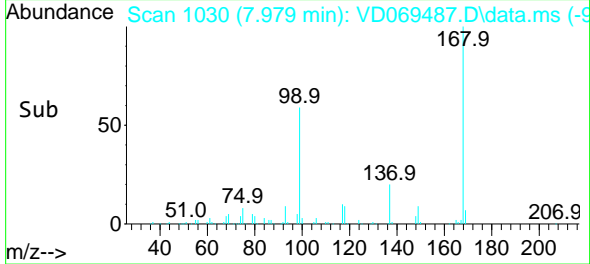
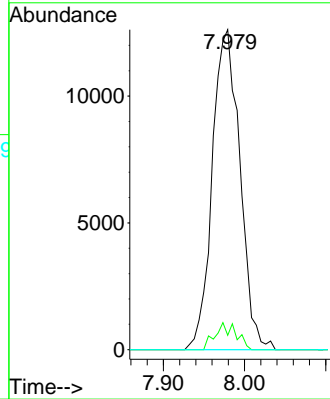
#38
 Carbon Tetrachloride
 Concen: 5.154 ug/l
 RT: 7.979 min Scan# 1030
 Delta R.T. -0.118 min
 Lab File: VD069487.D
 Acq: 17 Jun 2021 18:41

Instrument :
 MSVOA_D
 ClientSampled :
 124027



Tgt Ion:117 Resp: 29821

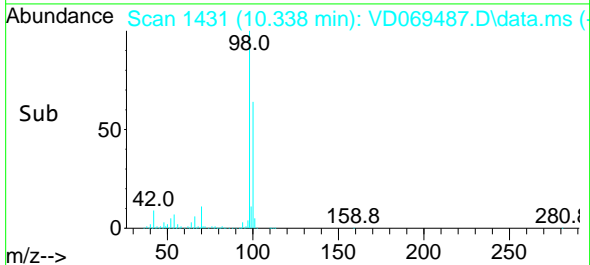
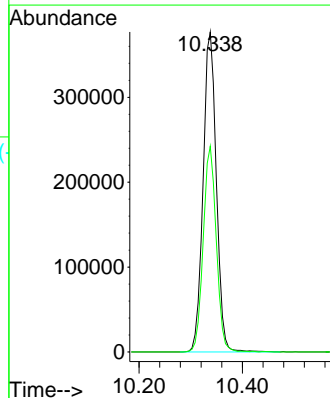
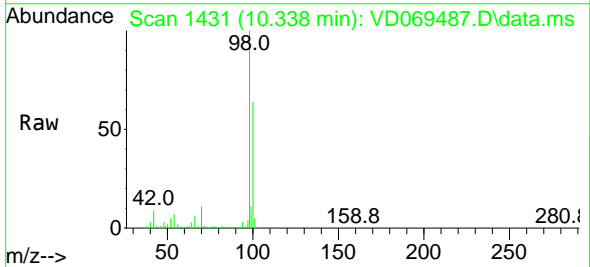
Ion	Ratio	Lower	Upper
117	100		
119	4.5	79.4	119.2#
121	0.0	26.1	39.1#

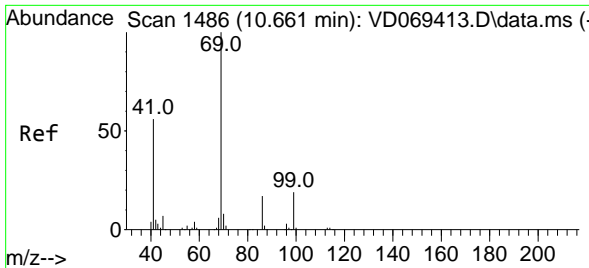


#50
 Toluene-d8
 Concen: 47.606 ug/l
 RT: 10.338 min Scan# 1431
 Delta R.T. -0.000 min
 Lab File: VD069487.D
 Acq: 17 Jun 2021 18:41

Tgt Ion: 98 Resp: 668970

Ion	Ratio	Lower	Upper
98	100		
100	63.5	52.1	78.1

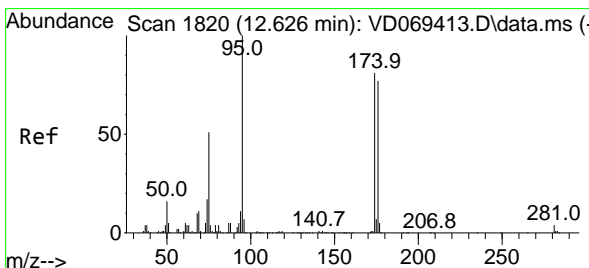
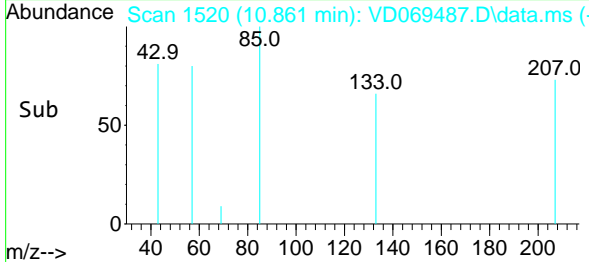
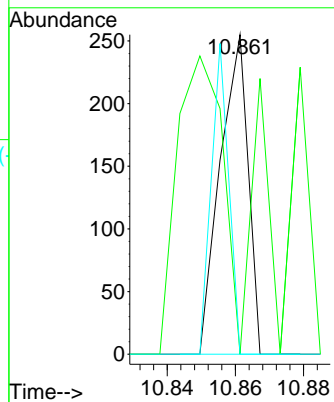
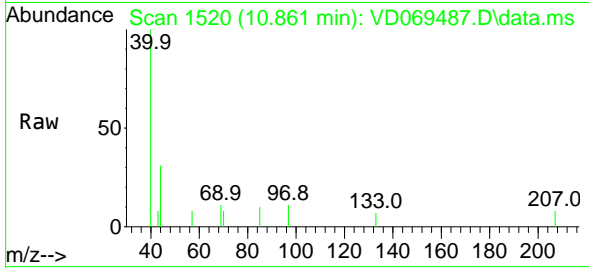




#56
 Ethyl methacrylate
 Concen: 2.863 ug/l
 RT: 10.861 min Scan# 1520
 Delta R.T. 0.200 min
 Lab File: VD069487.D
 Acq: 17 Jun 2021 18:41

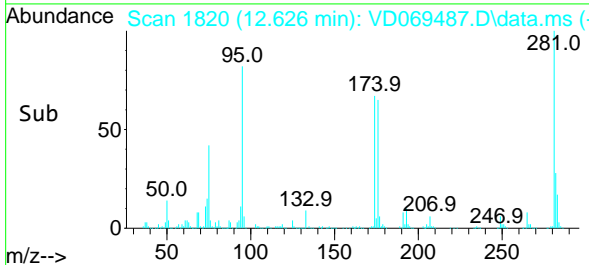
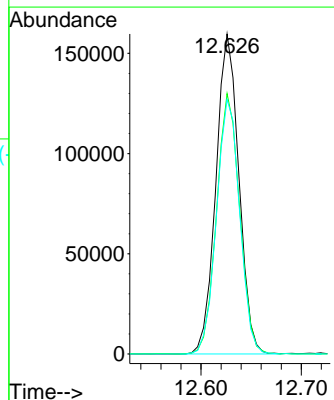
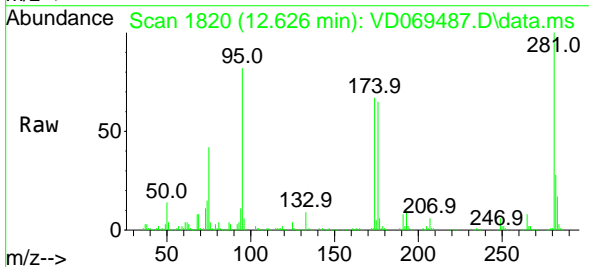
Instrument :
 MSVOA_D
 ClientSampled :
 124027

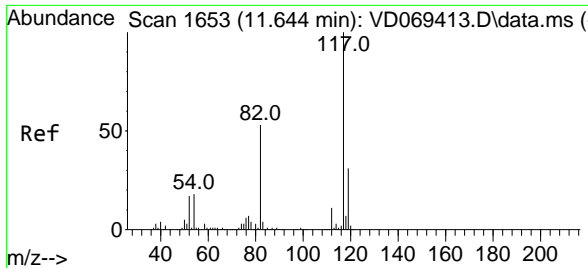
Tgt Ion	Resp	Lower	Upper
69	145		
41	53.8	45.4	68.2
39	60.0	21.7	32.5#



#62
 4-Bromofluorobenzene
 Concen: 56.209 ug/l
 RT: 12.626 min Scan# 1820
 Delta R.T. -0.000 min
 Lab File: VD069487.D
 Acq: 17 Jun 2021 18:41

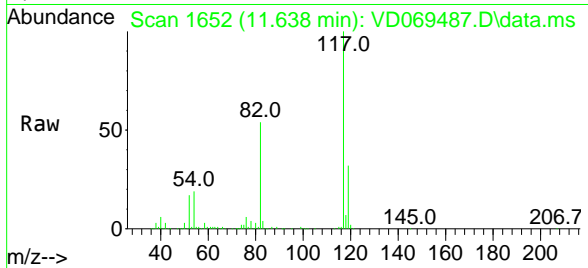
Tgt Ion	Resp	Lower	Upper
95	253440		
174	81.8	0.0	162.8
176	80.2	0.0	154.4





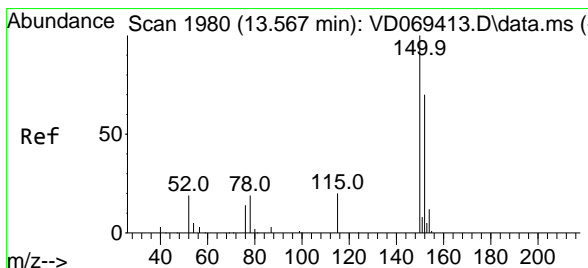
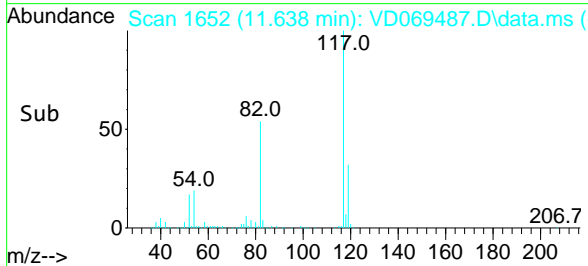
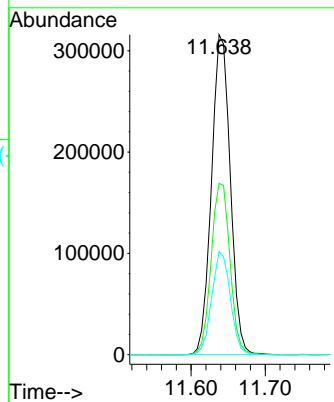
#63
 Chlorobenzene-d5
 Concen: 50.000 ug/l
 RT: 11.638 min Scan# 1652
 Delta R.T. -0.006 min
 Lab File: VD069487.D
 Acq: 17 Jun 2021 18:41

Instrument :
 MSVOA_D
 ClientSampled :
 124027

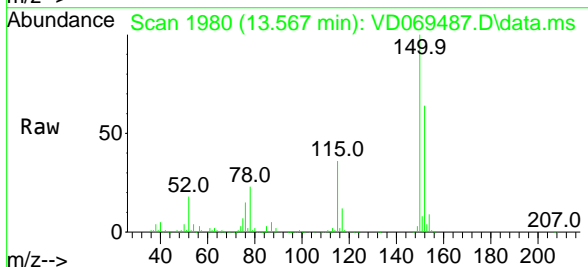


Tgt Ion:117 Resp: 557012

Ion	Ratio	Lower	Upper
117	100		
82	53.5	43.3	64.9
119	32.2	25.3	37.9

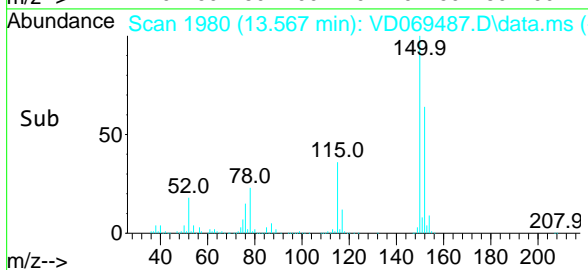
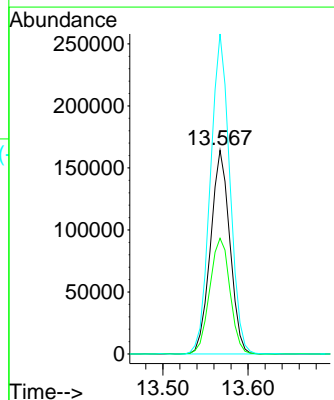


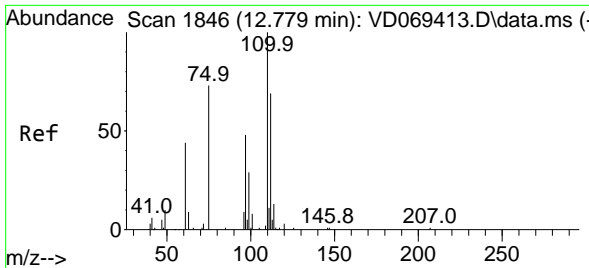
#72
 1,4-Dichlorobenzene-d4
 Concen: 50.000 ug/l
 RT: 13.567 min Scan# 1980
 Delta R.T. 0.000 min
 Lab File: VD069487.D
 Acq: 17 Jun 2021 18:41



Tgt Ion:152 Resp: 258461

Ion	Ratio	Lower	Upper
152	100		
115	59.6	29.4	88.3
150	158.1	0.0	355.0

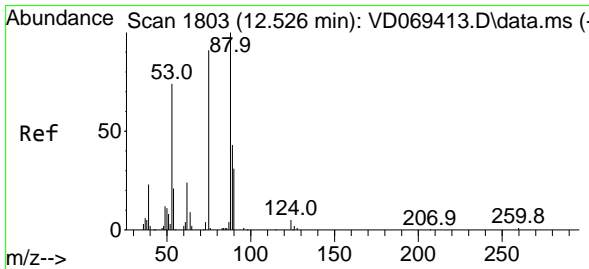
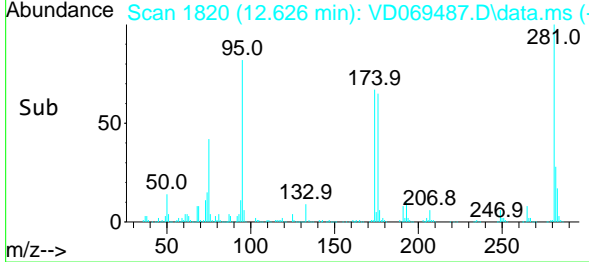
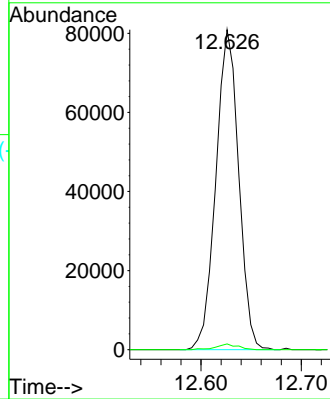
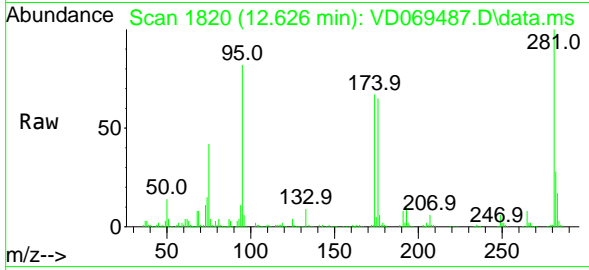




#76
 1,2,3-Trichloropropane
 Concen: 48.682 ug/l
 RT: 12.626 min Scan# 1820
 Delta R.T. -0.153 min
 Lab File: VD069487.D
 Acq: 17 Jun 2021 18:41

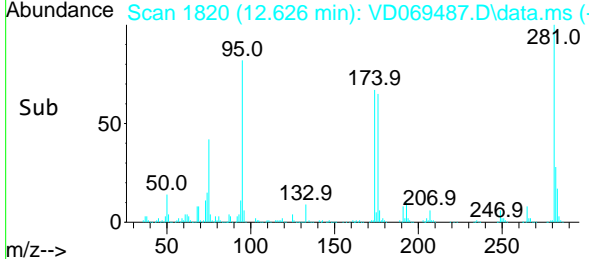
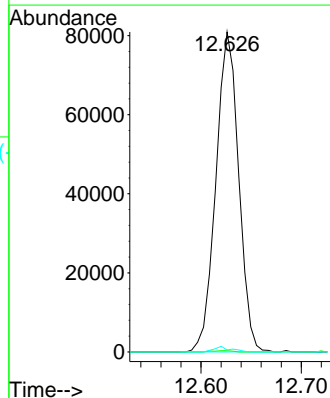
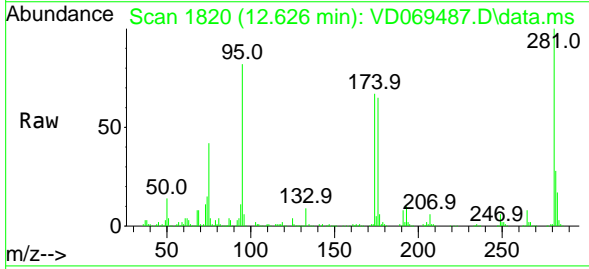
Instrument :
 MSVOA_D
 ClientSampled :
 124027

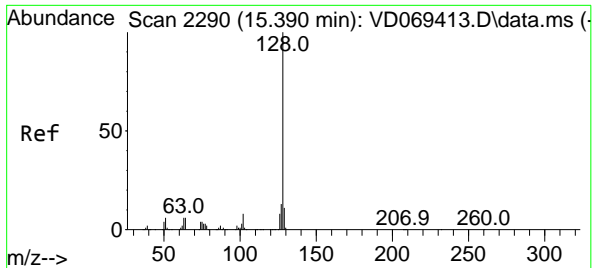
Tgt Ion: 75 Resp: 127563
 Ion Ratio Lower Upper
 75 100
 77 1.7 183.8 551.2#



#81
 trans-1,4-Dichloro-2-butene
 Concen: 129.870 ug/l
 RT: 12.626 min Scan# 1820
 Delta R.T. 0.100 min
 Lab File: VD069487.D
 Acq: 17 Jun 2021 18:41

Tgt Ion: 75 Resp: 127563
 Ion Ratio Lower Upper
 75 100
 53 0.3 62.6 94.0#
 89 1.3 35.6 53.4#





#95
 Naphthalene
 Concen: 3.622 ug/l
 RT: 15.396 min Scan# 2291
 Delta R.T. 0.006 min
 Lab File: VD069487.D
 Acq: 17 Jun 2021 18:41

Instrument :
 MSVOA_D
 ClientSampled :
 124027

Tgt Ion	Resp	Lower	Upper
128	100		
127	0.0	10.4	15.6#
129	0.0	8.8	13.2#

