

Data Path : Z:\VOASRV\HPCHEM1\MSVOA D\DATA\VD062118\
 Data File : VD058278.D
 Acq On : 22 Jun 2018 5:17
 Operator : VA/AP
 Sample : J3626-01
 Misc : 6.40g/5ml/MSVOA D/SOIL
 ALS Vial : 37 Sample Multiplier: 1

Instrument :
 MSVOA_D
 ClientSampled :
 A-1

Integration Parameters: RTEINT.P

Integrator: RTE
 Smoothing : ON Filtering: 5
 Sampling : 1 Min Area: 3 % of largest Peak
 Start Thrs: 0.2 Max Peaks: 100
 Stop Thrs : 0 Peak Location: TOP

If leading or trailing edge < 100 prefer < Baseline drop else tangent >
 Peak separation: 5

Method : Z:\VOASRV\HPCHEM1\MSVOA_D\METHOD\82D061918S.M
 Title : SW846 8260

Signal : TIC

peak #	R.T. min	first scan	max scan	last scan	PK TY	peak height	corr. area	corr. % max.	% of total
1	1.227	98	102	106	rBV	558777	1440404	71.96%	9.710%
2	2.625	238	244	252	rBV	29137	90753	4.53%	0.612%
3	3.078	286	290	297	rBV4	19013	57540	2.87%	0.388%
4	3.747	351	358	366	rVB3	14289	41289	2.06%	0.278%
5	4.859	464	471	478	rBV3	9335	34236	1.71%	0.231%
6	5.558	535	542	546	rBV	345724	911187	45.52%	6.142%
7	5.647	546	551	568	rVB	532398	1544627	77.17%	10.413%
8	6.031	583	590	602	rBV	338992	909588	45.44%	6.132%
9	6.700	652	658	671	rBV	693297	1741480	87.00%	11.740%
10	8.709	857	862	876	rBV	810427	1915471	95.70%	12.912%
11	10.687	1059	1063	1075	rBV	1033712	1868284	93.34%	12.594%
12	11.938	1186	1190	1199	rBV	1089820	1744229	87.14%	11.758%
13	12.095	1203	1206	1211	rVB	25459	37997	1.90%	0.256%
14	12.902	1285	1288	1294	rBV	1337858	2001598	100.00%	13.493%
15	13.513	1347	1350	1354	rVB2	27417	41622	2.08%	0.281%
16	14.517	1449	1452	1455	rBV	113380	120455	6.02%	0.812%
17	15.265	1525	1528	1531	rBV	133256	169508	8.47%	1.143%
18	15.383	1537	1540	1543	rBV	147387	163976	8.19%	1.105%

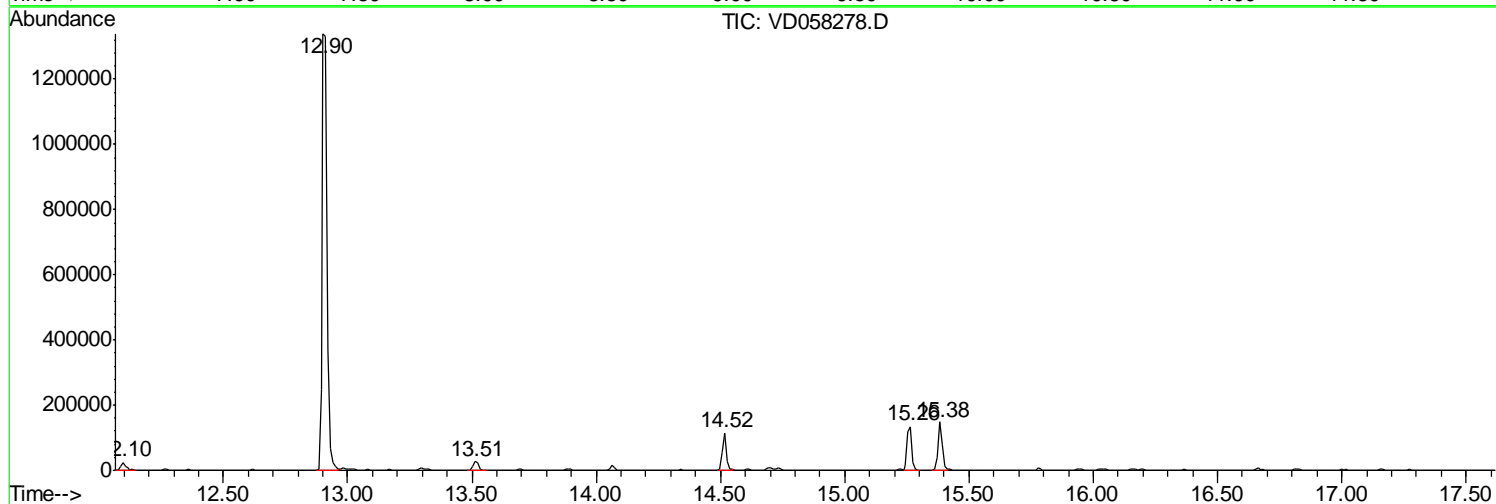
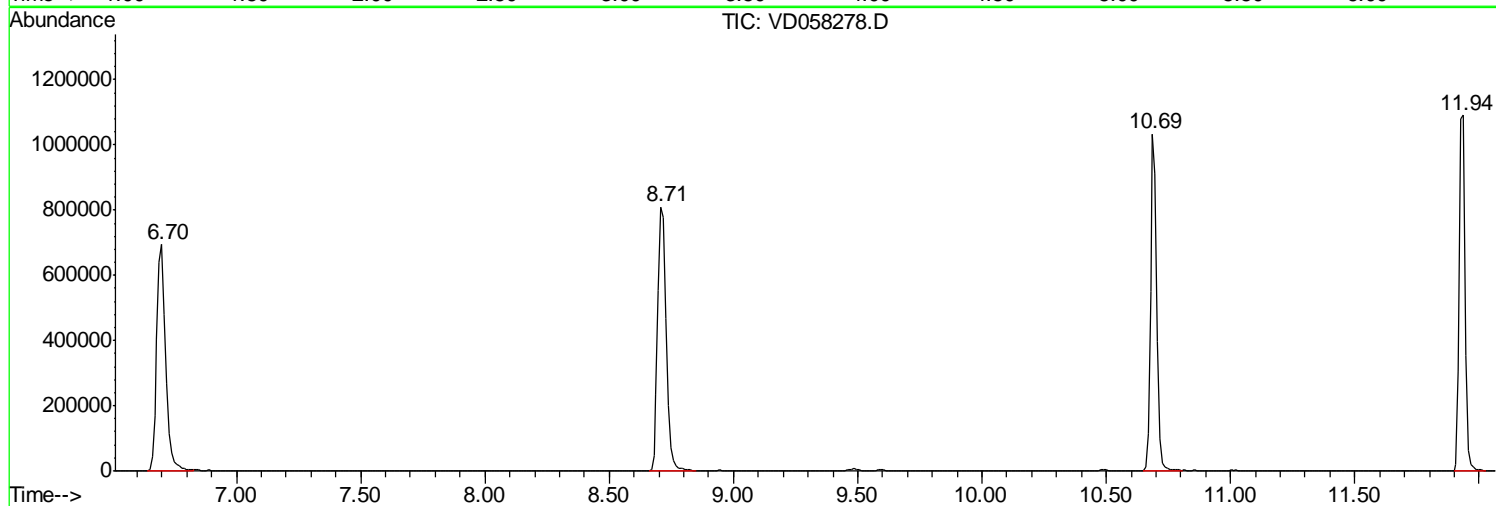
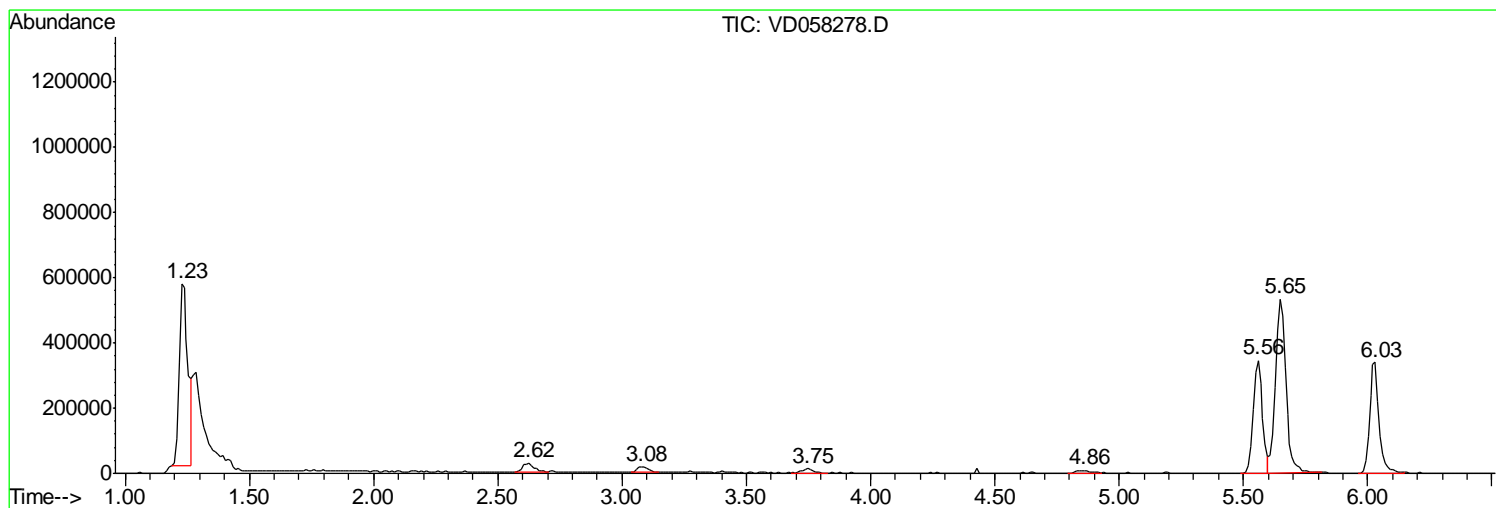
Sum of corrected areas: 14834244

Data Path : Z:\VOASRV\HPCHEM1\MSVOA D\DATA\VD062118\
Data File : VD058278.D
Acq On : 22 Jun 2018 5:17
Operator : VA/AP
Sample : J3626-01
Misc : 6.40µ/5ml/MSVOA D/SOIL
ALS Vial : 37 Sample Multiplier: 1

Instrument :
MSVOA_D
ClientSampled :
A-1

Quant Method : Z:\VOASRV\HPCHEM1\MSVOA_D\METHOD\82D061918S.M
Quant Title : SW846 8260

TIC Library : C:\DATABASE\NIST11.L
TIC Integration Parameters: LSCINT.P



Data Path : Z:\VOASRV\HPCHEM1\MSVOA_D\DATA\VD062118\
Data File : VD058278.D
Acq On : 22 Jun 2018 5:17
Operator : VA/AP
Sample : J3626-01
Misc : 6.40g/5ml/MSVOA_D/SOIL
ALS Vial : 37 Sample Multiplier: 1

Instrument :
MSVOA_D
ClientSampleId :
A-1

Quant Method : Z:\VOASRV\HPCHEM1\MSVOA_D\METHOD\82D061918S.M
Quant Title : SW846 8260

TIC Library : C:\DATABASE\NIST11.L
TIC Integration Parameters: LSCINT.P

No Library Search Compounds Detected

Data Path : Z:\VOASRV\HPCHEM1\MSVOA_D\DATA\VD062118\
Data File : VD058278.D
Acq On : 22 Jun 2018 5:17
Operator : VA/AP
Sample : J3626-01
Misc : 6.40g/5ml/MSVOA_D/SOIL
ALS Vial : 37 Sample Multiplier: 1

Instrument :
MSVOA_D
ClientSampleId :
A-1

Quant Method : Z:\VOASRV\HPCHEM1\MSVOA_D\METHOD\82D061918S.M
Quant Title : SW846 8260

TIC Library : C:\DATABASE\NIST11.L
TIC Integration Parameters: LSCINT.P

TIC Top Hit name	RT	EstConc	Units	Response	--Internal Standard--			
					#	RT	Resp	Conc
