

Data Path : Z:\VOASRV\HPCHEM1\MSVOA D\DATA\VD062119\
 Data File : VD062813.D
 Acq On : 21 Jun 2019 13:48
 Operator : VA/AP
 Sample : K3470-01
 Misc : 6.03g/5ml/MSVOA D/SOIL
 ALS Vial : 9 Sample Multiplier: 1

Instrument :
 MSVOA_D
 ClientSampled :
 SAMPLE-4

Integration Parameters: RTEINT.P

Integrator: RTE
 Smoothing : ON Filtering: 5
 Sampling : 1 Min Area: 3 % of largest Peak
 Start Thrs: 0.2 Max Peaks: 100
 Stop Thrs : 0 Peak Location: TOP

If leading or trailing edge < 100 prefer < Baseline drop else tangent >
 Peak separation: 5

Method : Z:\VOASRV\HPCHEM1\MSVOA_D\METHOD\82D061919S.M
 Title : SW846 8260

Signal : TIC

peak #	R.T. min	first scan	max scan	last scan	PK TY	peak height	corr. area	corr. % max.	% of total
1	1.473	3	5	10	rVB	327753	735395	37.45%	5.639%
2	1.542	10	12	21	rVB	77144	169244	8.62%	1.298%
3	1.709	26	29	32	rBV2	12011	20398	1.04%	0.156%
4	1.837	40	42	46	rVB	30008	52866	2.69%	0.405%
5	2.359	93	95	97	rVB3	17599	23456	1.19%	0.180%
6	2.644	119	124	128	rBV5	13217	36589	1.86%	0.281%
7	3.225	178	183	190	rBV	36768	95055	4.84%	0.729%
8	3.826	236	244	253	rBV2	30523	93640	4.77%	0.718%
9	6.937	550	560	567	rBV	444163	1208522	61.55%	9.268%
10	7.055	567	572	590	rVB	541594	1559122	79.40%	11.956%
11	7.468	607	614	625	rBV	306287	847597	43.17%	6.500%
12	8.236	686	692	704	rBV	584813	1538711	78.36%	11.800%
13	8.876	750	757	762	rBV4	5865	20565	1.05%	0.158%
14	10.422	908	914	921	rBV	866806	1963601	100.00%	15.058%
15	10.520	921	924	931	rVB2	25405	65384	3.33%	0.501%
16	11.248	993	998	1001	rBV2	11601	29130	1.48%	0.223%
17	12.381	1108	1113	1119	rBV	873608	1512409	77.02%	11.598%
18	12.666	1140	1142	1149	rVB4	11064	24715	1.26%	0.190%
19	13.562	1230	1233	1241	rVB	1035426	1382997	70.43%	10.606%
20	13.719	1246	1249	1254	rVB3	15581	25894	1.32%	0.199%
21	14.527	1327	1331	1334	rBV	926030	1177357	59.96%	9.029%
22	15.127	1388	1392	1393	rBV2	15608	29969	1.53%	0.230%
23	15.147	1393	1394	1399	rVB4	14681	20670	1.05%	0.159%
24	15.294	1405	1409	1411	rBV3	19131	39389	2.01%	0.302%
25	15.393	1416	1419	1421	rVV4	11458	20113	1.02%	0.154%
26	15.432	1421	1423	1426	rVV3	23793	32411	1.65%	0.249%
27	15.678	1446	1448	1453	rVV4	31328	60834	3.10%	0.467%
28	15.747	1453	1455	1457	rVV	11368	21325	1.09%	0.164%
29	15.806	1460	1461	1464	rVV3	13691	22039	1.12%	0.169%
30	15.944	1468	1475	1476	rVV3	15387	47526	2.42%	0.364%
31	15.993	1477	1480	1482	rVV4	19257	40482	2.06%	0.310%
32	16.072	1485	1488	1490	rVV3	11814	24512	1.25%	0.188%
33	16.151	1493	1496	1500	rVV2	15867	32450	1.65%	0.249%
34	16.230	1500	1504	1506	rVV3	15777	33345	1.70%	0.256%

Data Path : Z:\VOASRV\HPCHEM1\MSVOA D\DATA\VD062119\
Data File : VD062813.D
Acq On : 21 Jun 2019 13:48
Operator : VA/AP
Sample : K3470-01
Misc : 6.03g/5ml/MSVOA D/SOIL
ALS Vial : 9 Sample Multiplier: 1

Instrument :
MSVOA_D
ClientSampleId :
SAMPLE-4

Integration Parameters: RTEINT.P
Integrator: RTE
Smoothing : ON Filtering: 5
Sampling : 1 Min Area: 3 % of largest Peak
Start Thrs: 0.2 Max Peaks: 100
Stop Thrs : 0 Peak Location: TOP

If leading or trailing edge < 100 prefer < Baseline drop else tangent >
Peak separation: 5

Method : Z:\VOASRV\HPCHEM1\MSVOA_D\METHOD\82D061919S.M
Title : SW846 8260

35	16.486	1526	1530	1537	rVB5	12192	32398	1.65%	0.248%
----	--------	------	------	------	------	-------	-------	-------	--------

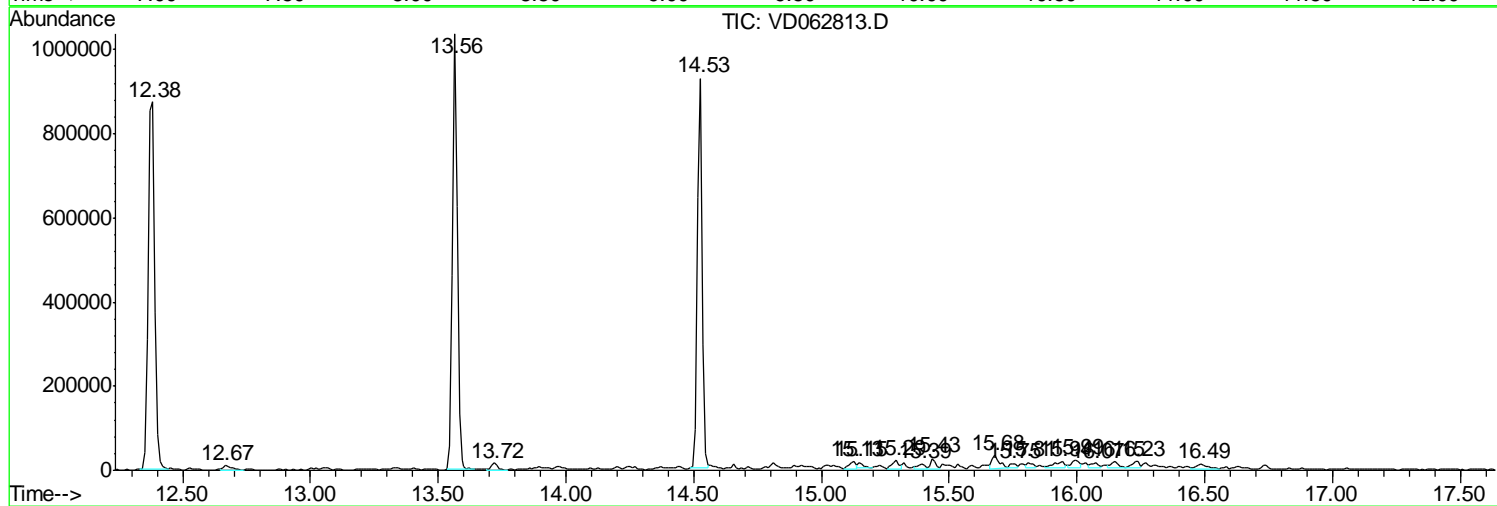
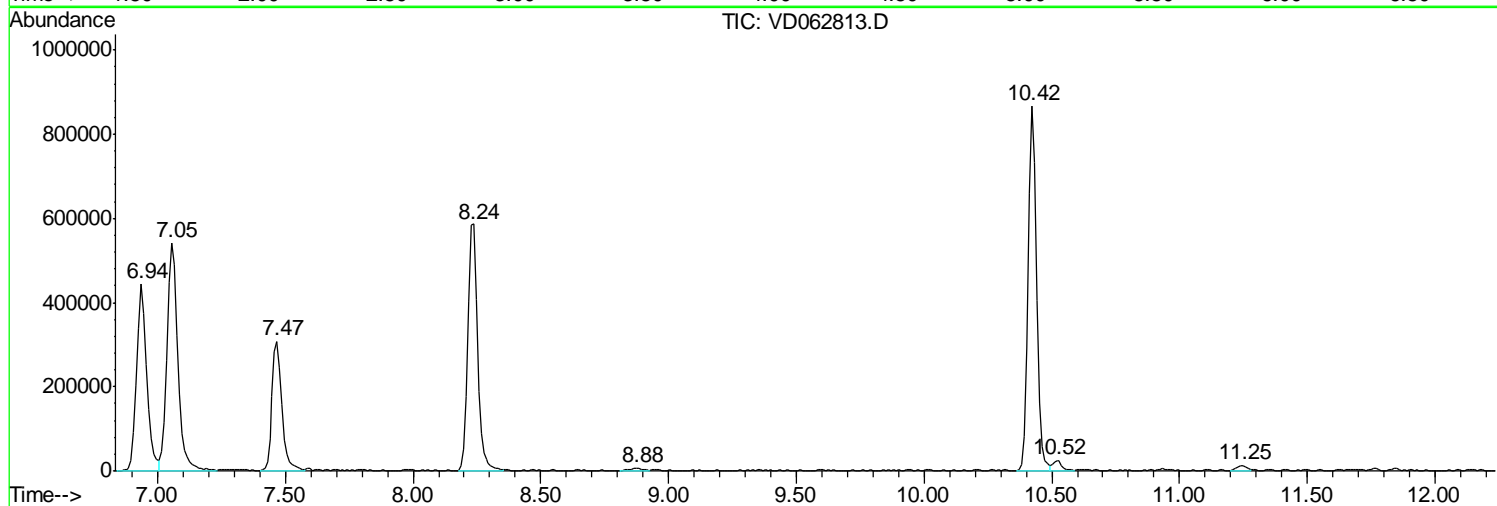
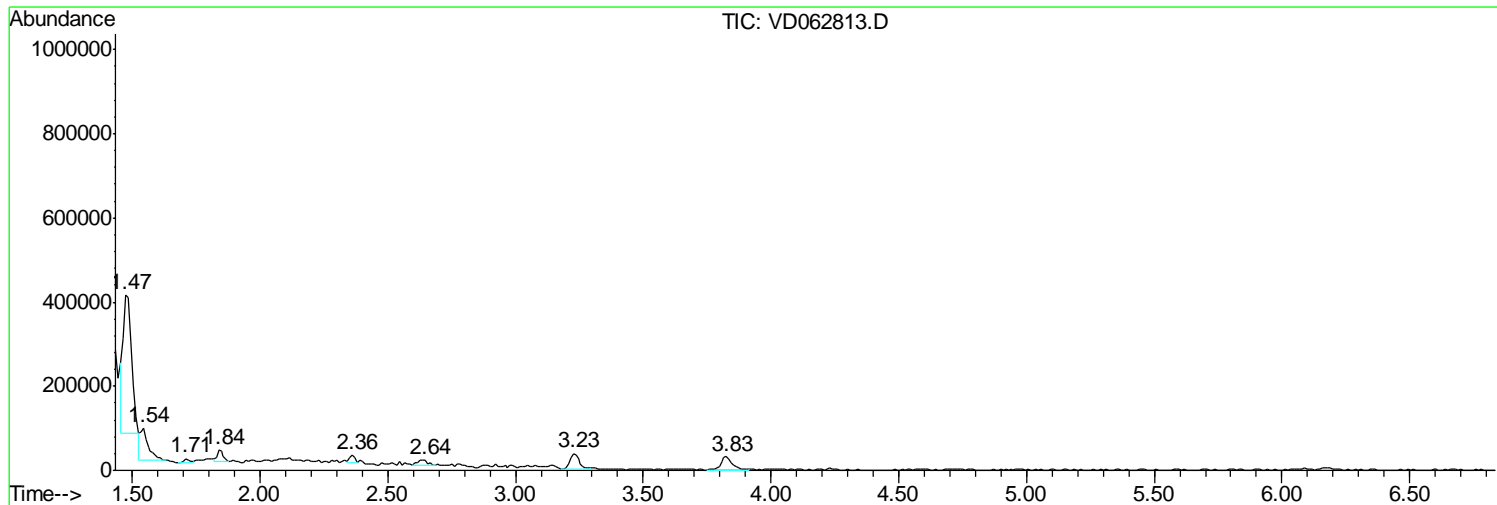
Sum of corrected areas: 13040110

Data Path : Z:\VOASRV\HPCHEM1\MSVOA D\DATA\VD062119\
 Data File : VD062813.D
 Acq On : 21 Jun 2019 13:48
 Operator : VA/AP
 Sample : K3470-01
 Misc : 6.03g/5ml/MSVOA D/SOIL
 ALS Vial : 9 Sample Multiplier: 1

Instrument :
 MSVOA_D
 ClientSampleId :
 SAMPLE-4

Quant Method : Z:\VOASRV\HPCHEM1\MSVOA_D\METHOD\82D061919S.M
 Quant Title : SW846 8260

TIC Library : C:\DATABASE\NIST11.L
 TIC Integration Parameters: LSCINT.P



Data Path : Z:\VOASRV\HPCHEM1\MSVOA_D\DATA\VD062119\
Data File : VD062813.D
Acq On : 21 Jun 2019 13:48
Operator : VA/AP
Sample : K3470-01
Misc : 6.03g/5ml/MSVOA_D/SOIL
ALS Vial : 9 Sample Multiplier: 1

Instrument :
MSVOA_D
ClientSampleId :
SAMPLE-4

Quant Method : Z:\VOASRV\HPCHEM1\MSVOA_D\METHOD\82D061919S.M
Quant Title : SW846 8260

TIC Library : C:\DATABASE\NIST11.L
TIC Integration Parameters: LSCINT.P

No Library Search Compounds Detected

Data Path : Z:\VOASRV\HPCHEM1\MSVOA_D\DATA\VD062119\
Data File : VD062813.D
Acq On : 21 Jun 2019 13:48
Operator : VA/AP
Sample : K3470-01
Misc : 6.03g/5ml/MSVOA_D/SOIL
ALS Vial : 9 Sample Multiplier: 1

Instrument :
MSVOA_D
ClientSampleId :
SAMPLE-4

Quant Method : Z:\VOASRV\HPCHEM1\MSVOA_D\METHOD\82D061919S.M
Quant Title : SW846 8260

TIC Library : C:\DATABASE\NIST11.L
TIC Integration Parameters: LSCINT.P

TIC Top Hit name	RT	EstConc	Units	Response	--Internal Standard--			
					#	RT	Resp	Conc
