

Data Path : Z:\VOASRV\HPCHEM1\MSVOA D\DATA\VD062618\  
 Data File : VD059424.D  
 Acq On : 26 Jun 2018 15:27  
 Operator : VA/AP  
 Sample : J3240-05  
 Misc : 7.00µ/5ml/MSVOA D/SOIL  
 ALS Vial : 11 Sample Multiplier: 1

Instrument :  
 MSVOA\_D  
 ClientSampleId :  
 BU-02-062218

Integration Parameters: RTEINT.P

Integrator: RTE  
 Smoothing : ON  
 Sampling : 1  
 Start Thrs: 0.2  
 Stop Thrs : 0

Filtering: 5  
 Min Area: 3 % of largest Peak  
 Max Peaks: 100  
 Peak Location: TOP

If leading or trailing edge < 100 prefer < Baseline drop else tangent >  
 Peak separation: 5

Method : Z:\VOASRV\HPCHEM1\MSVOA\_D\METHOD\82D062518S.M  
 Title : SW846 8260

Signal : TIC

peak #	R.T. min	first scan	max scan	last scan	PK TY	peak height	corr. area	corr. % max.	% of total
1	1.222	94	101	103	rBV	1303438	2732960	41.55%	11.527%
2	1.281	103	107	127	rVB	1802230	6577023	100.00%	27.740%
3	3.073	284	289	298	rVB	46374	131071	1.99%	0.553%
4	3.732	351	356	363	rBV3	31911	102313	1.56%	0.432%
5	5.544	533	540	544	rBV	344395	968195	14.72%	4.084%
6	5.632	544	549	571	rVB	633131	1879868	28.58%	7.929%
7	6.006	581	587	601	rBV	272462	711349	10.82%	3.000%
8	6.676	649	655	672	rBV	728588	1911798	29.07%	8.063%
9	8.694	855	860	873	rBV	585657	1248746	18.99%	5.267%
10	10.673	1057	1061	1070	rBV	905502	1716221	26.09%	7.239%
11	11.923	1184	1188	1196	rBV	825404	1138040	17.30%	4.800%
12	12.080	1201	1204	1211	rVB2	59680	110346	1.68%	0.465%
13	12.898	1284	1287	1293	rBV	1102451	1421575	21.61%	5.996%
14	13.025	1297	1300	1303	rVB3	58043	97484	1.48%	0.411%
15	13.193	1314	1317	1323	rVB6	61597	123563	1.88%	0.521%
16	13.331	1329	1331	1334	rVB2	75867	107415	1.63%	0.453%
17	13.409	1334	1339	1340	rBV4	35466	87047	1.32%	0.367%
18	13.518	1347	1350	1355	rVB5	72394	151003	2.30%	0.637%
19	13.665	1362	1365	1368	rBV3	90225	152257	2.31%	0.642%
20	13.734	1368	1372	1374	rVB3	45509	79231	1.20%	0.334%
21	13.774	1374	1376	1378	rVB3	62314	74167	1.13%	0.313%
22	13.813	1378	1380	1384	rBV4	102413	204362	3.11%	0.862%
23	14.059	1403	1405	1407	rBV2	60541	104488	1.59%	0.441%
24	14.138	1411	1413	1415	rBV	95310	105341	1.60%	0.444%
25	14.197	1415	1419	1424	rBV6	124879	262403	3.99%	1.107%
26	14.305	1428	1430	1434	rVV4	31618	75400	1.15%	0.318%
27	14.433	1441	1443	1447	rBV2	135492	167560	2.55%	0.707%
28	14.512	1448	1451	1452	rBV2	81854	112645	1.71%	0.475%
29	14.620	1458	1462	1464	rBV4	94679	155660	2.37%	0.657%
30	14.689	1467	1469	1471	rVV	59639	69935	1.06%	0.295%
31	14.758	1474	1476	1478	rBV2	66967	107088	1.63%	0.452%
32	14.807	1478	1481	1483	rVB3	119359	191594	2.91%	0.808%
33	14.866	1484	1487	1489	rBV2	90681	149209	2.27%	0.629%
34	14.955	1494	1496	1498	rBV2	68780	102361	1.56%	0.432%

Data Path : Z:\VOASRV\HPCHEM1\MSVOA D\DATA\VD062618\  
Data File : VD059424.D  
Acq On : 26 Jun 2018 15:27  
Operator : VA/AP  
Sample : J3240-05  
Misc : 7.00µ/5ml/MSVOA D/SOIL  
ALS Vial : 11 Sample Multiplier: 1

Instrument :  
MSVOA\_D  
ClientSampleID :  
BU-02-062218

Integration Parameters: RTEINT.P  
Integrator: RTE  
Smoothing : ON Filtering: 5  
Sampling : 1 Min Area: 3 % of largest Peak  
Start Thrs: 0.2 Max Peaks: 100  
Stop Thrs : 0 Peak Location: TOP

If leading or trailing edge < 100 prefer < Baseline drop else tangent >  
Peak separation: 5

Method : Z:\VOASRV\HPCHEM1\MSVOA\_D\METHOD\82D062518S.M  
Title : SW846 8260

35	15.093	1507	1510	1513	rVV3	122966	197926	3.01%	0.835%
36	15.368	1535	1538	1544	rVB5	81906	181654	2.76%	0.766%

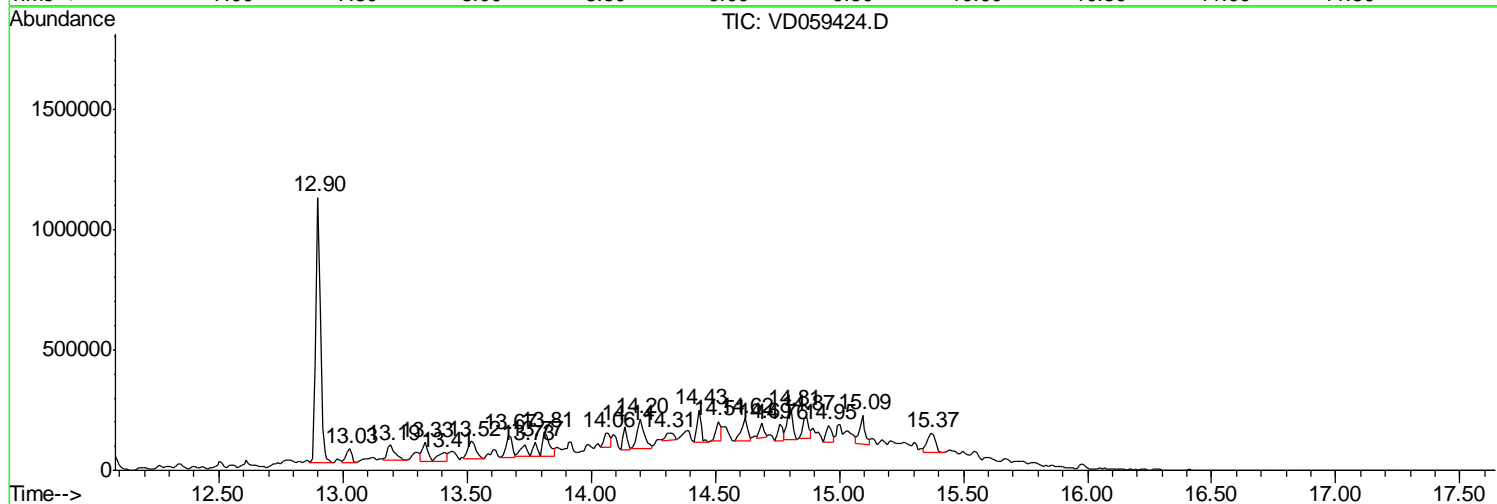
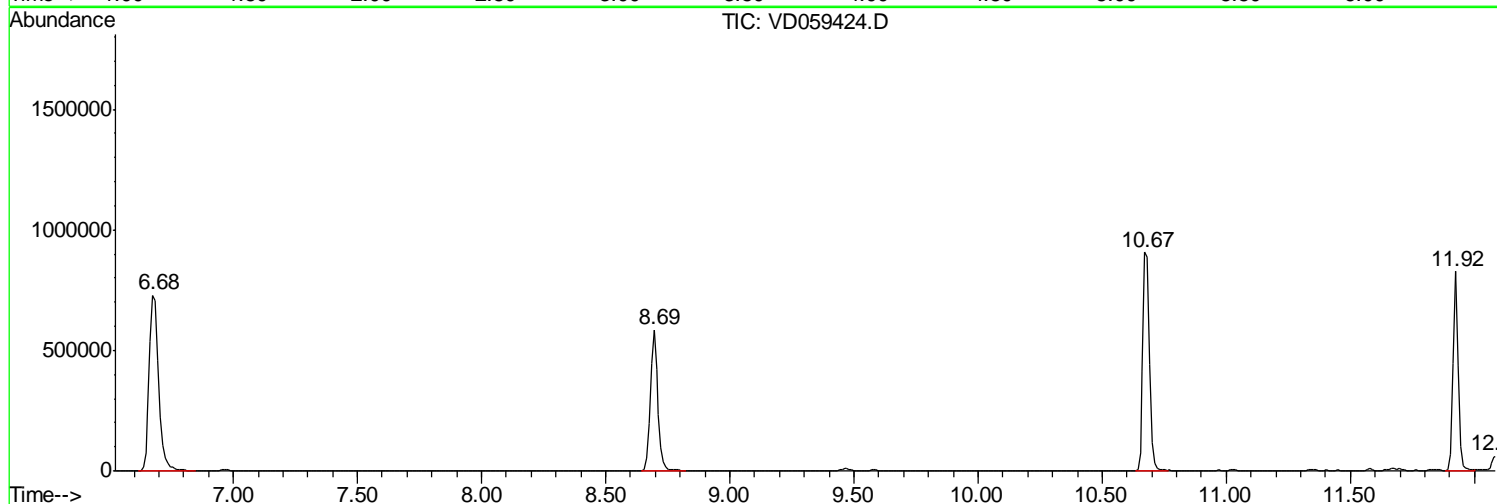
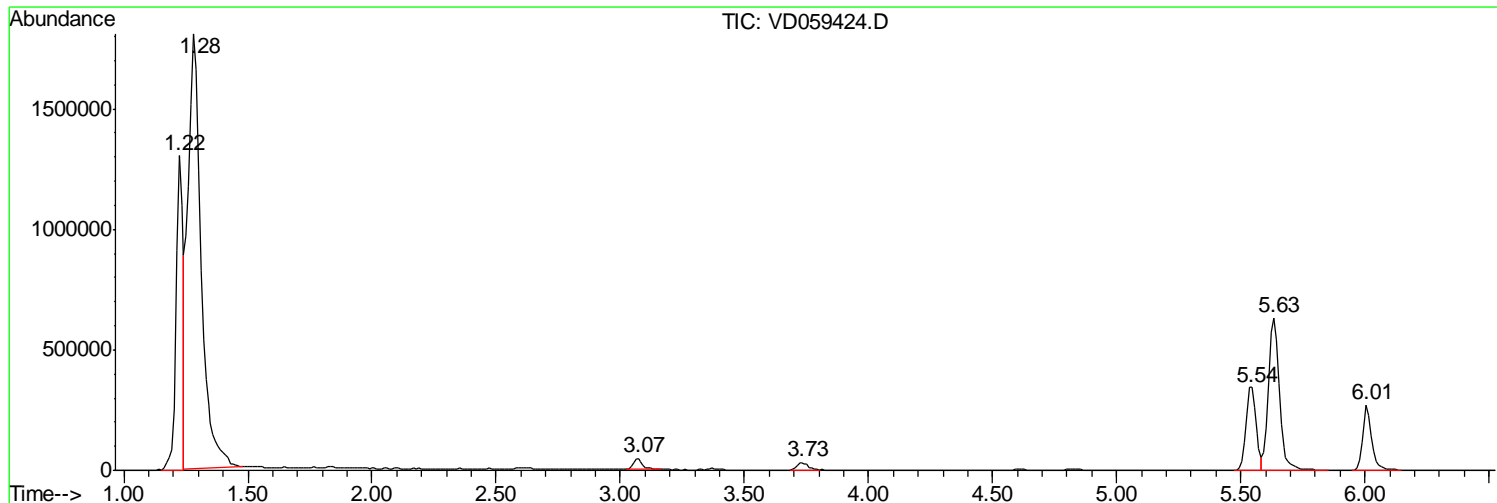
Sum of corrected areas: 23709298

Data Path : Z:\VOASRV\HPCHEM1\MSVOA D\DATA\VD062618\  
 Data File : VD059424.D  
 Acq On : 26 Jun 2018 15:27  
 Operator : VA/AP  
 Sample : J3240-05  
 Misc : 7.00µ/5ml/MSVOA D/SOIL  
 ALS Vial : 11 Sample Multiplier: 1

Instrument :  
 MSVOA\_D  
 ClientSampleId :  
 BU-02-062218

Quant Method : Z:\VOASRV\HPCHEM1\MSVOA\_D\METHOD\82D062518S.M  
 Quant Title : SW846 8260

TIC Library : C:\DATABASE\NIST11.L  
 TIC Integration Parameters: LSCINT.P



Data Path : Z:\VOASRV\HPCHEM1\MSVOA D\DATA\VD062618\  
 Data File : VD059424.D  
 Acq On : 26 Jun 2018 15:27  
 Operator : VA/AP  
 Sample : J3240-05  
 Misc : 7.00µ/5ml/MSVOA D/SOIL  
 ALS Vial : 11 Sample Multiplier: 1

Instrument :  
 MSVOA\_D  
 ClientSampleID :  
 BU-02-062218

Quant Method : Z:\VOASRV\HPCHEM1\MSVOA\_D\METHOD\82D062518S.M  
 Quant Title : SW846 8260

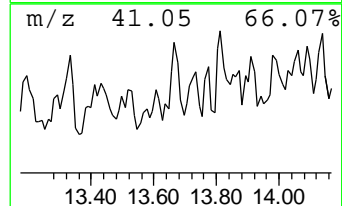
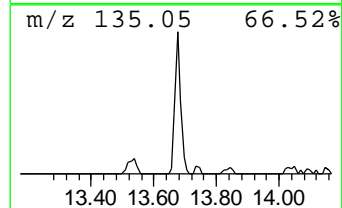
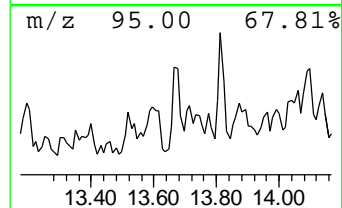
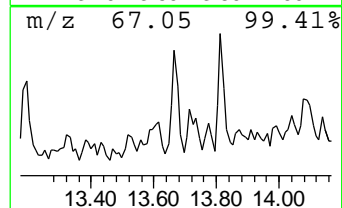
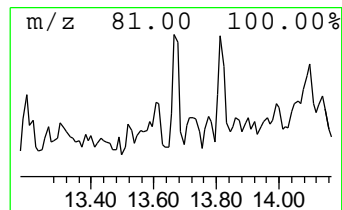
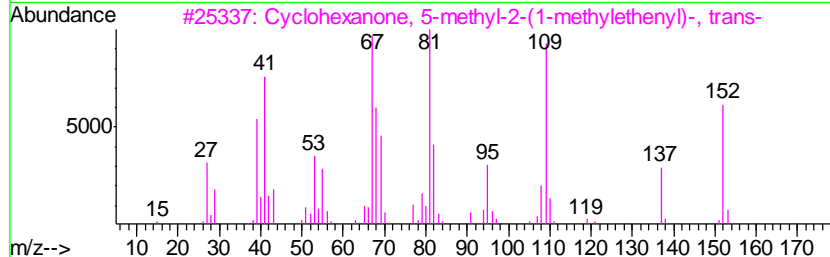
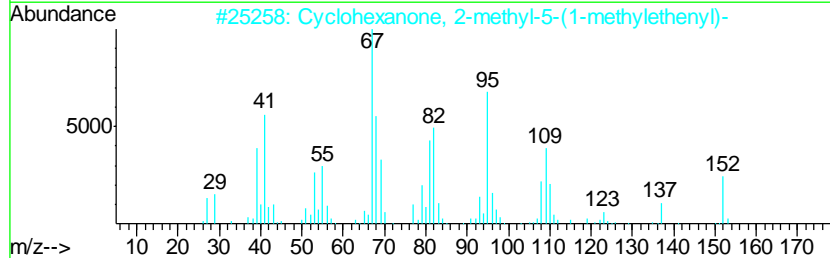
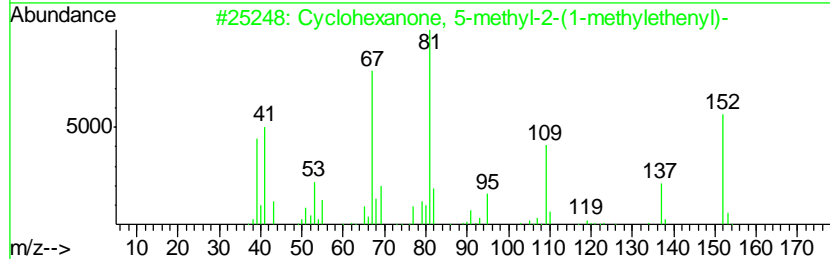
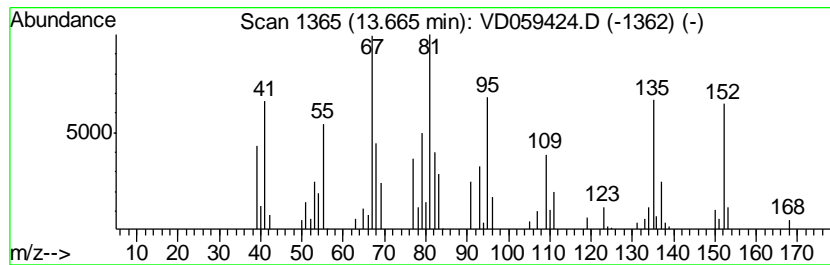
TIC Library : C:\DATABASE\NIST11.L  
 TIC Integration Parameters: LSCINT.P

\*\*\*\*\*  
 Peak Number 3 Cyclohexanone, 5-methyl-2-(... Concentration Rank 10

R.T.	EstConc	Area	Relative to ISTD	R.T.
13.67	5.36 ug/l	152257	1,4-Dichlorobenzene-d4	12.90

Hit#	of	Tentative ID	MW	MolForm	CAS#	Qual
1	5	Cyclohexanone, 5-methyl-2-(1-met...	152	C10H16O	000529-00-0	91
2		Cyclohexanone, 2-methyl-5-(1-met...	152	C10H16O	007764-50-3	78
3		Cyclohexanone, 5-methyl-2-(1-met...	152	C10H16O	029606-79-9	78
4		Cyclohexanone, 5-methyl-2-(1-met...	152	C10H16O	015932-80-6	70
5		Decalin, anti-1-methyl-, cis-	152	C11H20	1000158-89-0	60



Data Path : Z:\VOASRV\HPCHEM1\MSVOA D\DATA\VD062618\  
 Data File : VD059424.D  
 Acq On : 26 Jun 2018 15:27  
 Operator : VA/AP  
 Sample : J3240-05  
 Misc : 7.00µ/5ml/MSVOA D/SOIL  
 ALS Vial : 11 Sample Multiplier: 1

Instrument :  
 MSVOA\_D  
 ClientSampleID :  
 BU-02-062218

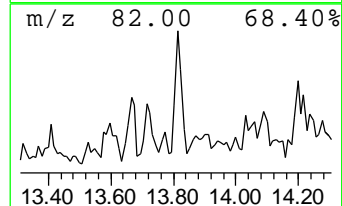
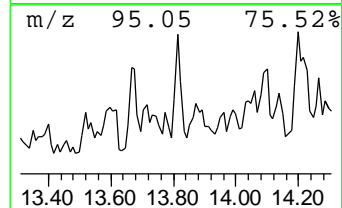
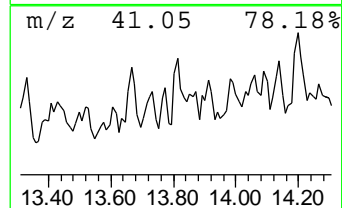
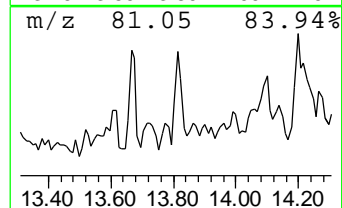
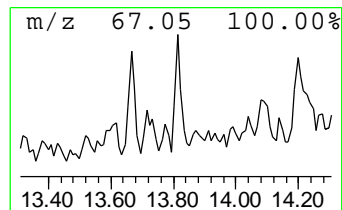
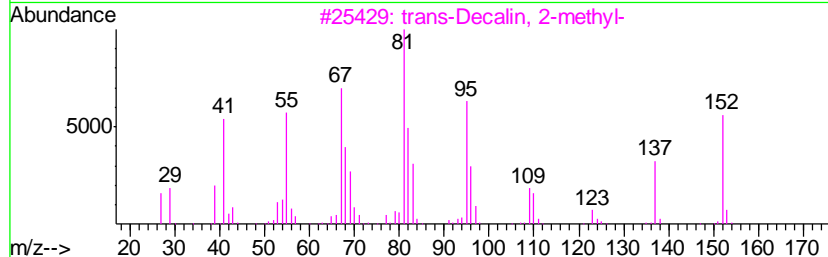
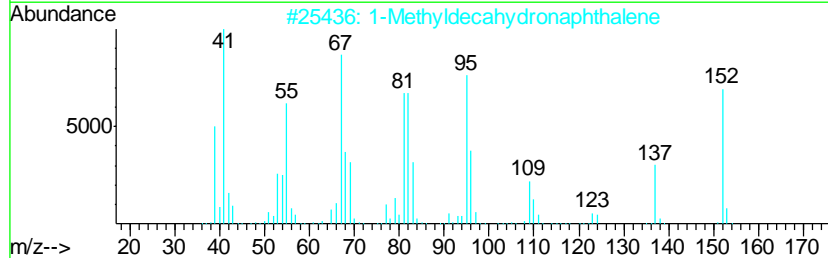
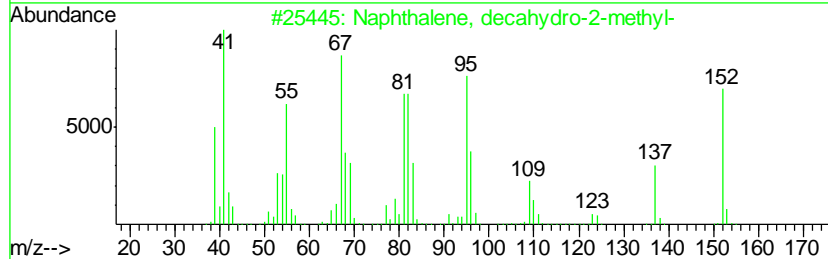
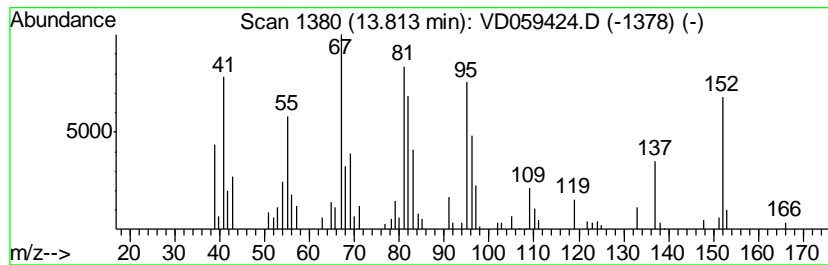
Quant Method : Z:\VOASRV\HPCHEM1\MSVOA\_D\METHOD\82D062518S.M  
 Quant Title : SW846 8260

TIC Library : C:\DATABASE\NIST11.L  
 TIC Integration Parameters: LSCINT.P

\*\*\*\*\*  
 Peak Number 4 Naphthalene, decahydro-2-me... Concentration Rank 4

R.T.	EstConc	Area	Relative to ISTD	R.T.
13.81	7.19 ug/l	204362	1,4-Dichlorobenzene-d4	12.90

Hit#	of	Tentative ID	MW	MolForm	CAS#	Qual
1	5	Naphthalene, decahydro-2-methyl-	152	C11H20	002958-76-1	93
2		1-Methyldecahydronaphthalene	152	C11H20	002958-75-0	93
3		trans-Decalin, 2-methyl-	152	C11H20	1000152-47-3	74
4		trans-4a-Methyl-decahydronaphtha...	152	C11H20	002547-27-5	70
5		Bicyclo[3.1.1]heptane, 2,6,6-tri...	138	C10H18	004795-86-2	68



Data Path : Z:\VOASRV\HPCHEM1\MSVOA D\DATA\VD062618\  
 Data File : VD059424.D  
 Acq On : 26 Jun 2018 15:27  
 Operator : VA/AP  
 Sample : J3240-05  
 Misc : 7.00µl/5ml/MSVOA D/SOIL  
 ALS Vial : 11 Sample Multiplier: 1

Instrument :  
 MSVOA\_D  
 ClientSampleID :  
 BU-02-062218

Quant Method : Z:\VOASRV\HPCHEM1\MSVOA\_D\METHOD\82D062518S.M  
 Quant Title : SW846 8260

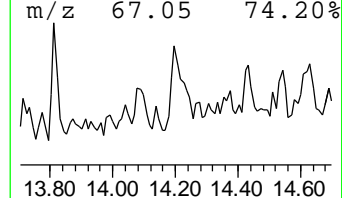
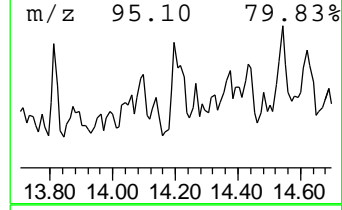
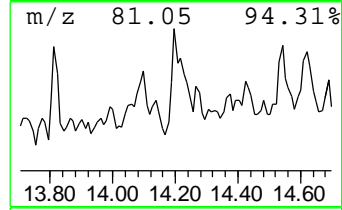
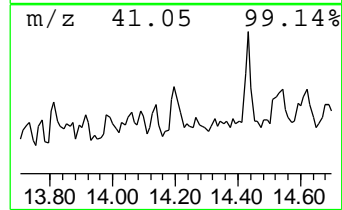
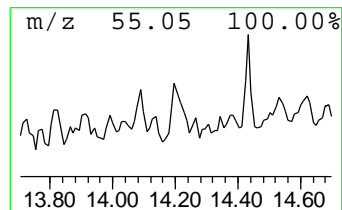
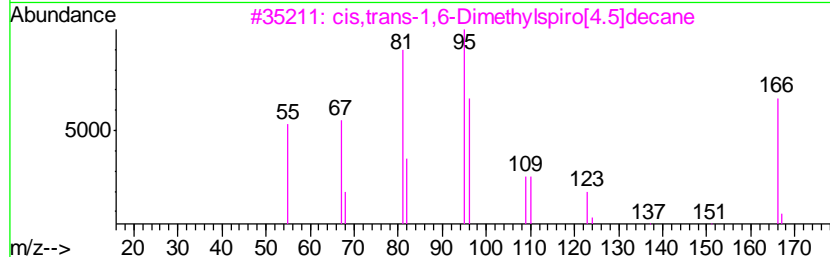
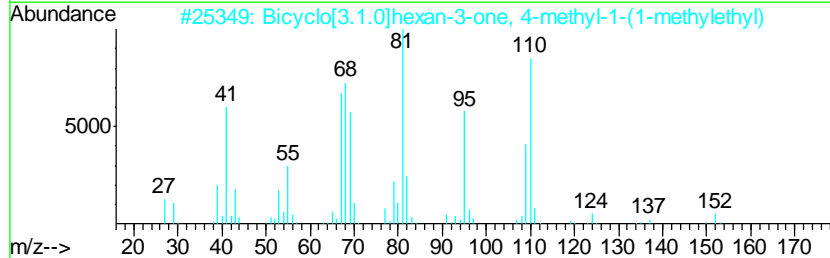
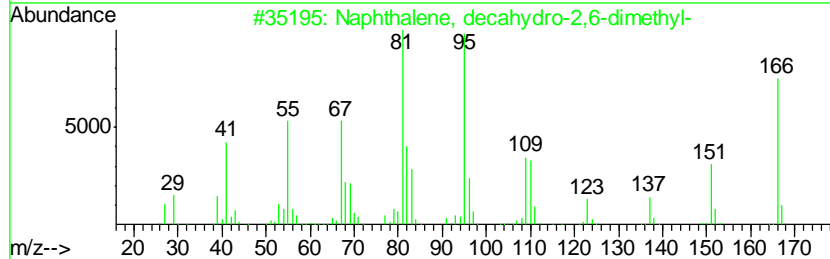
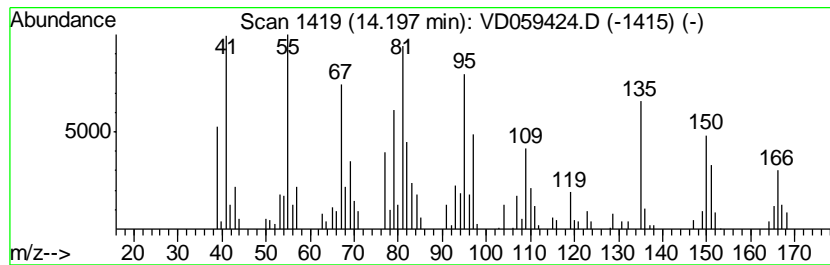
TIC Library : C:\DATABASE\NIST11.L  
 TIC Integration Parameters: LSCINT.P

\*\*\*\*\*  
 Peak Number 5 Naphthalene, decahydro-2,6-... Concentration Rank 3

R.T.	EstConc	Area	Relative to ISTD	R.T.
14.20	9.23 ug/l	262403	1,4-Dichlorobenzene-d4	12.90

Hit#	of	Tentative ID	MW	MolForm	CAS#	Qual
1	5	Naphthalene, decahydro-2,6-dimet...	166	C12H22	001618-22-0	70
2		Bicyclo[3.1.0]hexan-3-one, 4-met...	152	C10H16O	001125-12-8	60
3		cis,trans-1,6-Dimethylspiro[4.5]...	166	C12H22	1000111-72-3	53
4		Bicyclo[4.1.0]heptane, 3,7,7-tri...	138	C10H18	006069-97-2	50
5		Cyclohexene, 1,2-dimethyl-	110	C8H14	001674-10-8	49



Data Path : Z:\VOASRV\HPCHEM1\MSVOA D\DATA\VD062618\  
 Data File : VD059424.D  
 Acq On : 26 Jun 2018 15:27  
 Operator : VA/AP  
 Sample : J3240-05  
 Misc : 7.00µl/5ml/MSVOA D/SOIL  
 ALS Vial : 11 Sample Multiplier: 1

Instrument :  
 MSVOA\_D  
 ClientSampleID :  
 BU-02-062218

Quant Method : Z:\VOASRV\HPCHEM1\MSVOA\_D\METHOD\82D062518S.M  
 Quant Title : SW846 8260

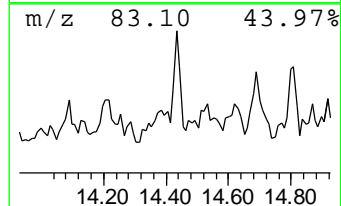
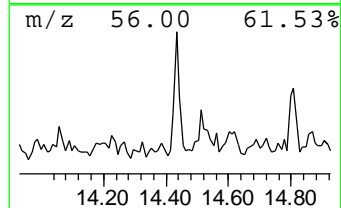
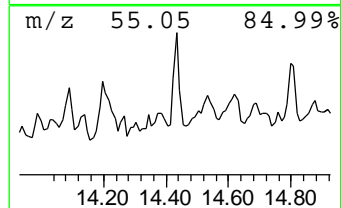
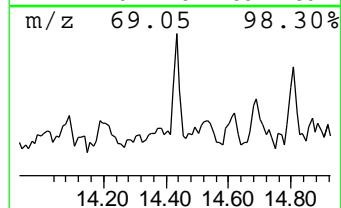
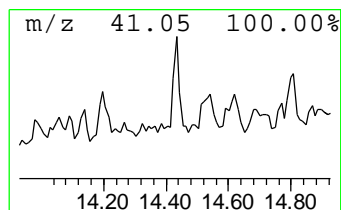
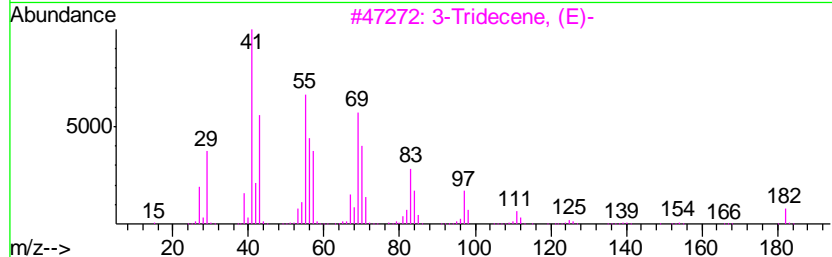
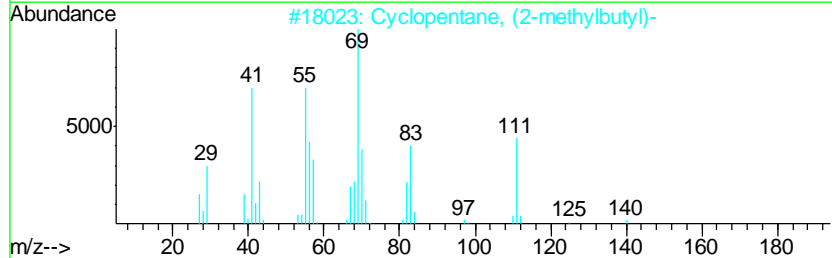
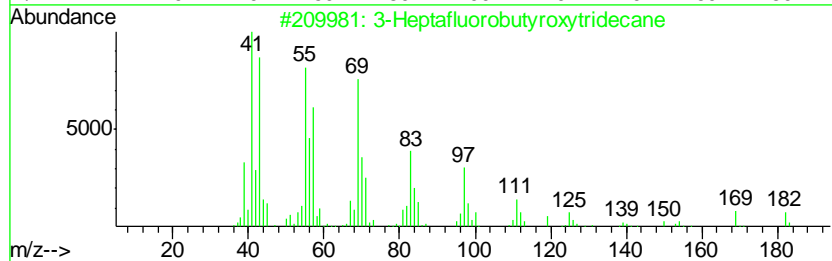
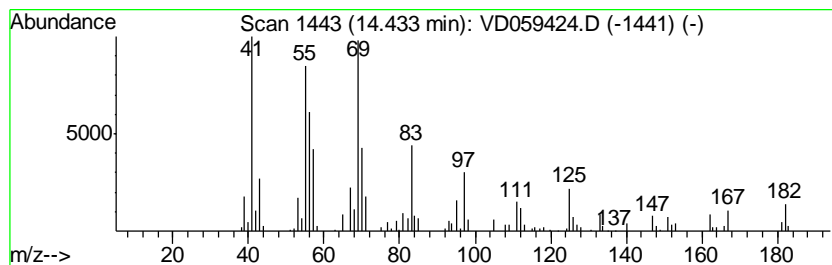
TIC Library : C:\DATABASE\NIST11.L  
 TIC Integration Parameters: LSCINT.P

\*\*\*\*\*  
 Peak Number 6 3-Heptafluorobutyroxytridecane Concentration Rank 8

R.T.	EstConc	Area	Relative to ISTD	R.T.
14.43	5.89 ug/l	167560	1,4-Dichlorobenzene-d4	12.90

Hit#	of	Tentative ID	MW	MolForm	CAS#	Qual
1	5	3-Heptafluorobutyroxytridecane	396	C17H27F7O2	1000245-49-5	86
2		Cyclopentane, (2-methylbutyl)-	140	C10H20	053366-38-4	70
3		3-Tridecene, (E)-	182	C13H26	041446-57-5	62
4		6-Tridecene	182	C13H26	024949-38-0	60
5		3-Tridecene, (Z)-	182	C13H26	041446-53-1	58



Data Path : Z:\VOASRV\HPCHEM1\MSVOA D\DATA\VD062618\  
 Data File : VD059424.D  
 Acq On : 26 Jun 2018 15:27  
 Operator : VA/AP  
 Sample : J3240-05  
 Misc : 7.00µl/5ml/MSVOA D/SOIL  
 ALS Vial : 11 Sample Multiplier: 1

Instrument :  
 MSVOA\_D  
 ClientSampleID :  
 BU-02-062218

Quant Method : Z:\VOASRV\HPCHEM1\MSVOA\_D\METHOD\82D062518S.M  
 Quant Title : SW846 8260

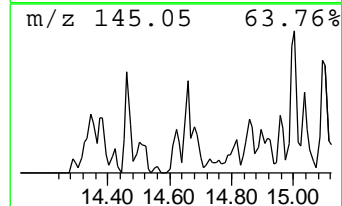
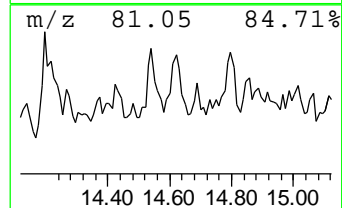
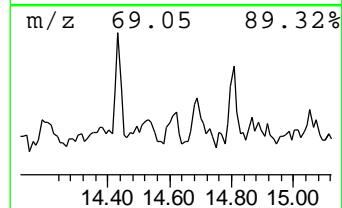
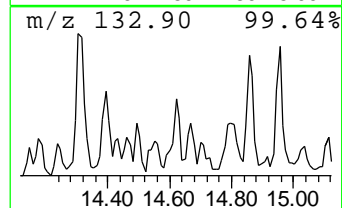
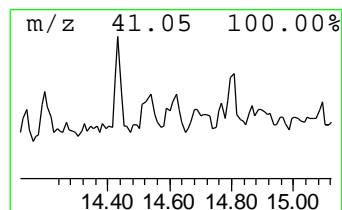
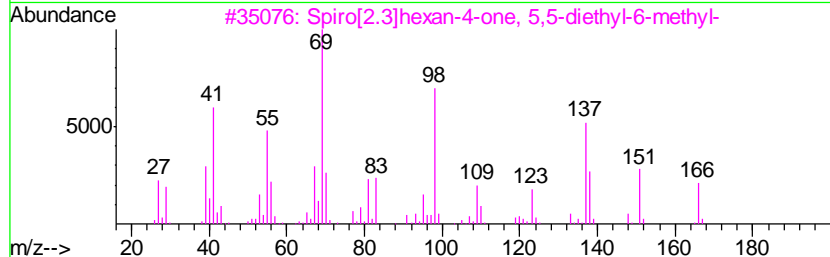
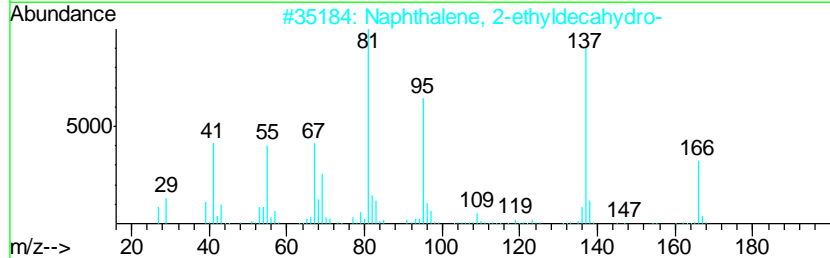
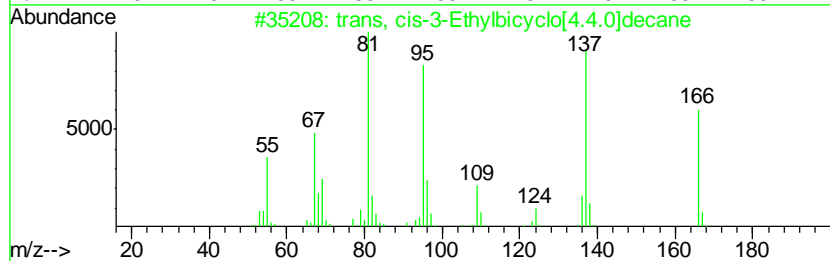
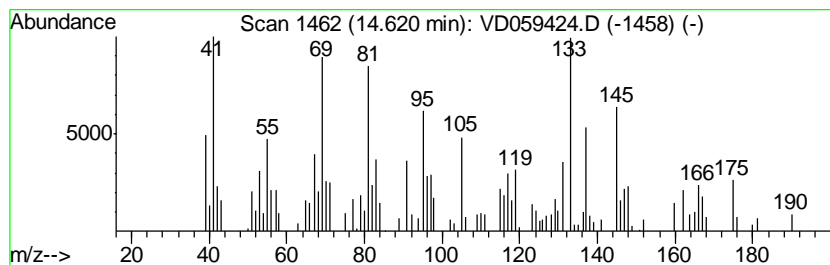
TIC Library : C:\DATABASE\NIST11.L  
 TIC Integration Parameters: LSCINT.P

\*\*\*\*\*  
 Peak Number 7 unknown14.62 Concentration Rank 9

R.T.	EstConc	Area	Relative to ISTD	R.T.
14.62	5.47 ug/l	155660	1,4-Dichlorobenzene-d4	12.90

Hit#	of	Tentative ID	MW	MolForm	CAS#	Qual
1	5	trans, cis-3-Ethylbicyclo[4.4.0]...	166	C12H22	066660-43-3	42
2		Naphthalene, 2-ethyldecahydro-	166	C12H22	001618-23-1	30
3		Spiro[2.3]hexan-4-one, 5,5-dieth...	166	C11H18O	1000152-25-2	25
4		Bicyclo[6.1.0]nonane, 9-bromo-9-...	216	C10H17Br	059474-03-2	22
5		Cyclodecene, 3-bromo-	216	C10H17Br	056325-56-5	22





Data Path : Z:\VOASRV\HPCHEM1\MSVOA D\DATA\VD062618\  
 Data File : VD059424.D  
 Acq On : 26 Jun 2018 15:27  
 Operator : VA/AP  
 Sample : J3240-05  
 Misc : 7.00µl/5ml/MSVOA D/SOIL  
 ALS Vial : 11 Sample Multiplier: 1

Instrument :  
 MSVOA\_D  
 ClientSampleID :  
 BU-02-062218

Quant Method : Z:\VOASRV\HPCHEM1\MSVOA\_D\METHOD\82D062518S.M  
 Quant Title : SW846 8260

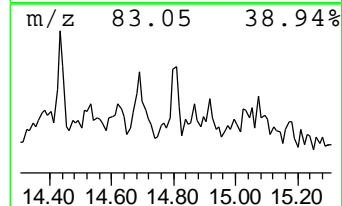
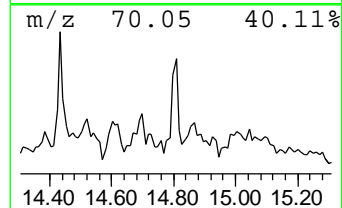
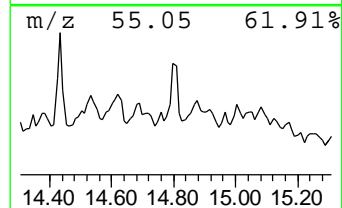
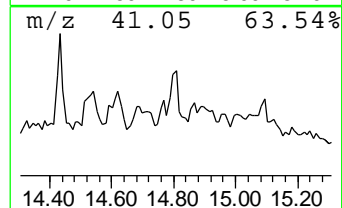
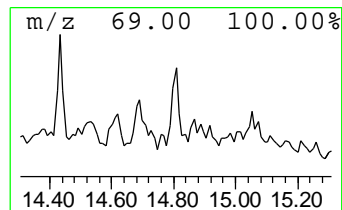
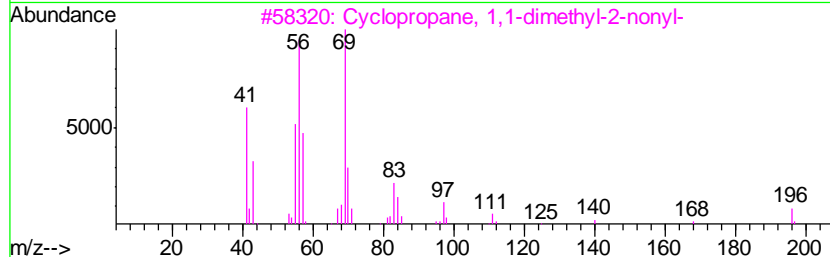
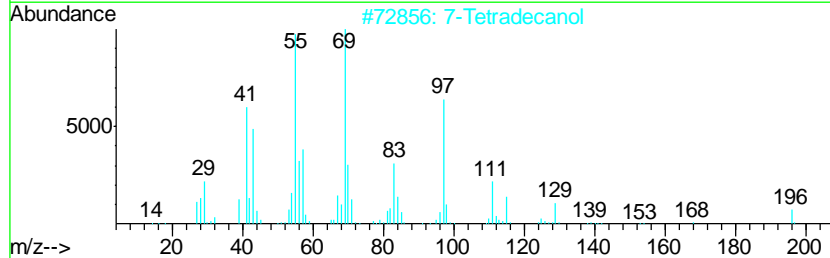
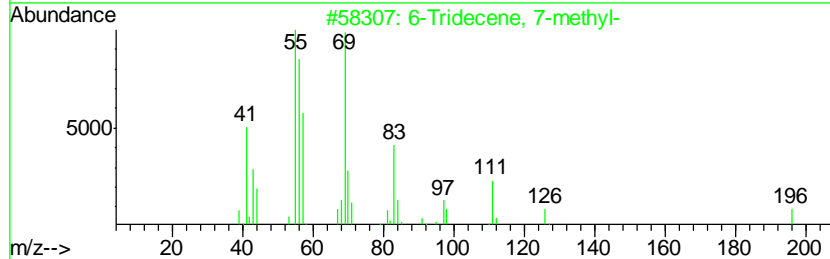
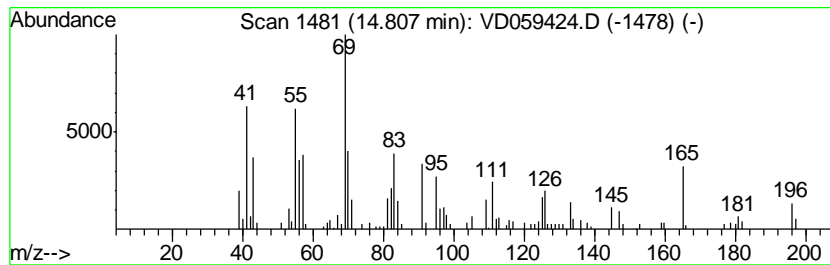
TIC Library : C:\DATABASE\NIST11.L  
 TIC Integration Parameters: LSCINT.P

\*\*\*\*\*  
 Peak Number 8 6-Tridecene, 7-methyl- Concentration Rank 6

R.T.	EstConc	Area	Relative to ISTD	R.T.
14.81	6.74 ug/l	191594	1,4-Dichlorobenzene-d4	12.90

Hit#	of	Tentative ID	MW	MolForm	CAS#	Qual
1	5	6-Tridecene, 7-methyl-	196	C14H28	024949-42-6	58
2		7-Tetradecanol	214	C14H30O	003981-79-1	53
3		Cyclopropane, 1,1-dimethyl-2-nonyl-	196	C14H28	041977-38-2	46
4		Cyclohexanone, 3,5-dimethyl-	126	C8H14O	002320-30-1	43
5		Cyclohexanone, 3,5-dimethyl-, cis-	126	C8H14O	007214-52-0	43



Data Path : Z:\VOASRV\HPCHEM1\MSVOA D\DATA\VD062618\  
 Data File : VD059424.D  
 Acq On : 26 Jun 2018 15:27  
 Operator : VA/AP  
 Sample : J3240-05  
 Misc : 7.00µ/5ml/MSVOA D/SOIL  
 ALS Vial : 11 Sample Multiplier: 1

Instrument :  
 MSVOA\_D  
 ClientSampleID :  
 BU-02-062218

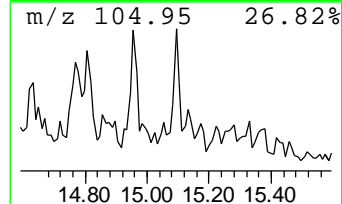
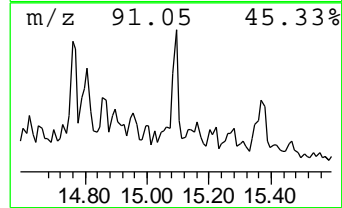
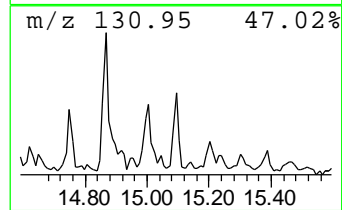
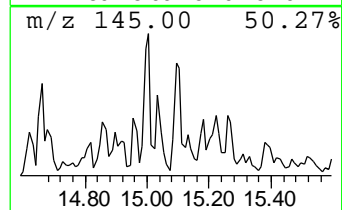
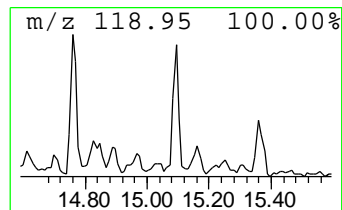
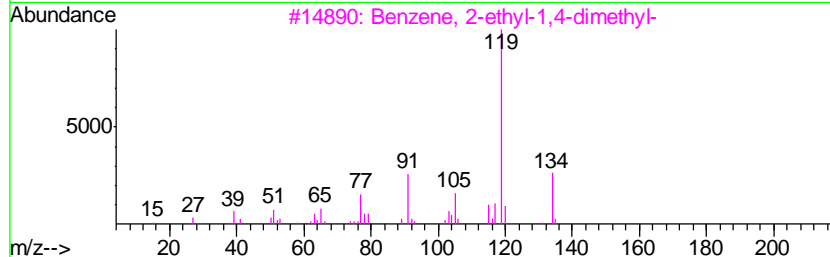
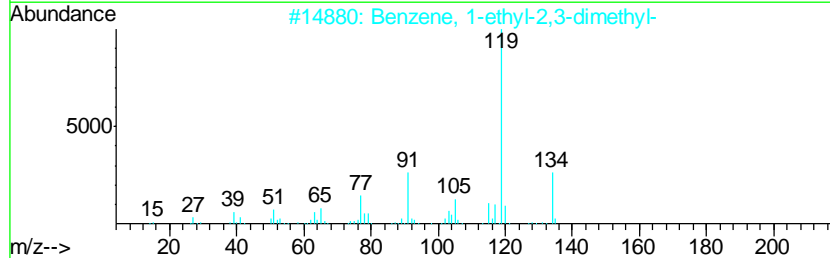
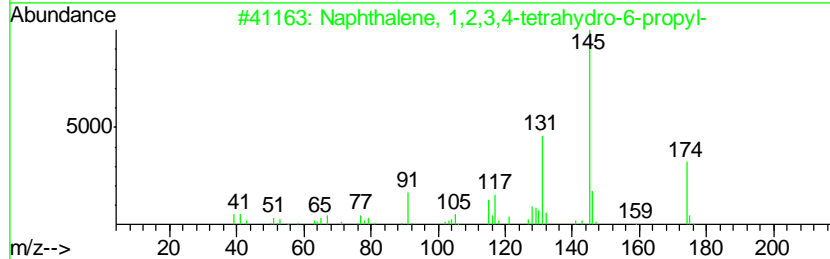
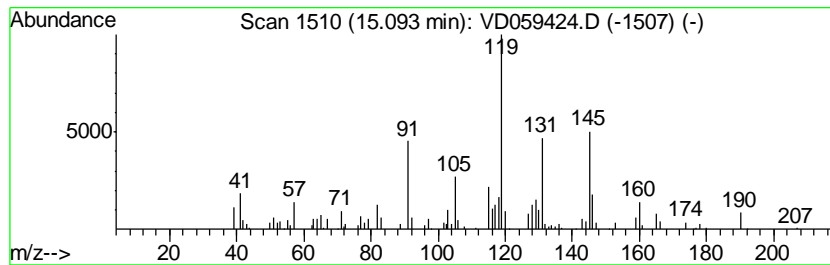
Quant Method : Z:\VOASRV\HPCHEM1\MSVOA\_D\METHOD\82D062518S.M  
 Quant Title : SW846 8260

TIC Library : C:\DATABASE\NIST11.L  
 TIC Integration Parameters: LSCINT.P

\*\*\*\*\*  
 Peak Number 9 unknown15.09 Concentration Rank 5

R.T.	EstConc	Area	Relative to ISTD	R.T.
15.09	6.96 ug/l	197926	1,4-Dichlorobenzene-d4	12.90

Hit#	of	Tentative ID	MW	MolForm	CAS#	Qual
1	5	Naphthalene, 1,2,3,4-tetrahydro-...	174	C13H18	042775-77-9	43
2		Benzene, 1-ethyl-2,3-dimethyl-	134	C10H14	000933-98-2	38
3		Benzene, 2-ethyl-1,4-dimethyl-	134	C10H14	001758-88-9	38
4		3-(4-Cyanomethyl-1H-pyrrol-3-yl)...	159	C9H9N3	106491-24-1	35
5		3-Buten-1-one, 1-(4-methylphenyl)-	160	C11H12O	130649-66-0	35



Data Path : Z:\VOASRV\HPCHEM1\MSVOA D\DATA\VD062618\  
 Data File : VD059424.D  
 Acq On : 26 Jun 2018 15:27  
 Operator : VA/AP  
 Sample : J3240-05  
 Misc : 7.00µl/5ml/MSVOA D/SOIL  
 ALS Vial : 11 Sample Multiplier: 1

Instrument :  
 MSVOA\_D  
 ClientSampleID :  
 BU-02-062218

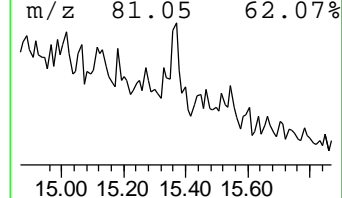
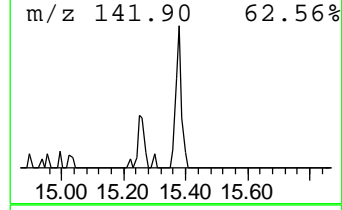
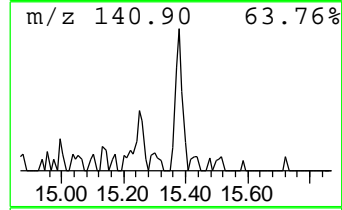
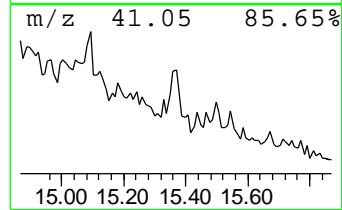
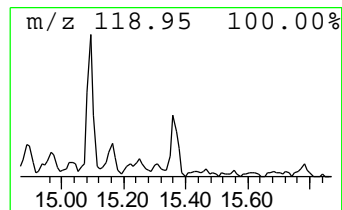
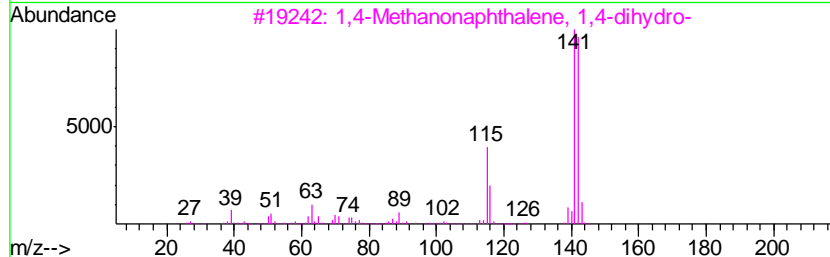
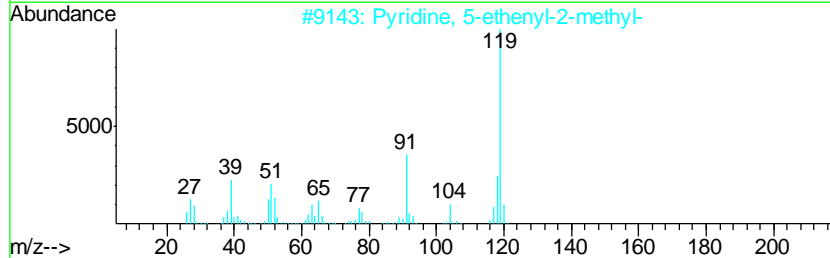
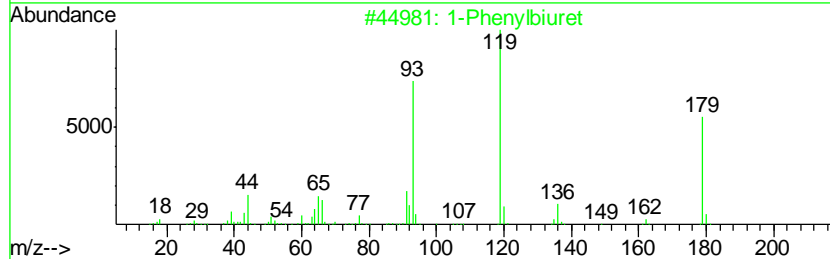
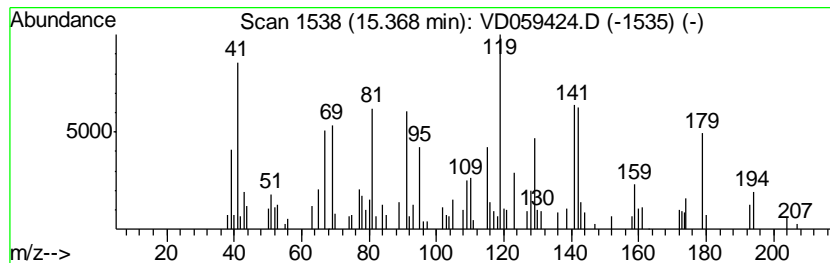
Quant Method : Z:\VOASRV\HPCHEM1\MSVOA\_D\METHOD\82D062518S.M  
 Quant Title : SW846 8260

TIC Library : C:\DATABASE\NIST11.L  
 TIC Integration Parameters: LSCINT.P

\*\*\*\*\*  
 Peak Number 10 unknown15.37 Concentration Rank 7

R.T.	EstConc	Area	Relative to ISTD	R.T.
15.37	6.39 ug/l	181654	1,4-Dichlorobenzene-d4	12.90

Hit#	of	Tentative ID	MW	MolForm	CAS#	Qual
1	5	1-Phenylbiuret	179	C8H9N3O2	013911-40-5	25
2		Pyridine, 5-ethenyl-2-methyl-	119	C8H9N	000140-76-1	15
3		1,4-Methanonaphthalene, 1,4-dihy...	142	C11H10	004453-90-1	11
4		Benzocycloheptatriene	142	C11H10	000264-09-5	11
5		Benzonitrile, 2-hydroxy-	119	C7H5NO	000611-20-1	11



Data Path : Z:\VOASRV\HPCHEM1\MSVOA\_D\DATA\VD062618\  
Data File : VD059424.D  
Acq On : 26 Jun 2018 15:27  
Operator : VA/AP  
Sample : J3240-05  
Misc : 7.00g/5ml/MSVOA\_D/SOIL  
ALS Vial : 11 Sample Multiplier: 1

Instrument :  
MSVOA\_D  
ClientSampleId :  
BU-02-062218

Quant Method : Z:\VOASRV\HPCHEM1\MSVOA\_D\METHOD\82D062518S.M  
Quant Title : SW846 8260

TIC Library : C:\DATABASE\NIST11.L  
TIC Integration Parameters: LSCINT.P

TIC Top Hit name	RT	EstConc	Units	Response	--Internal Standard--			
					#	RT	Resp	Conc
Cyclohexanone, 5-...	13.67	5.4	ug/l	152257	4	12.90	1421580	50.0
Naphthalene, deca...	13.81	7.2	ug/l	204362	4	12.90	1421580	50.0
Naphthalene, deca...	14.20	9.2	ug/l	262403	4	12.90	1421580	50.0
3-Heptafluorobuty...	14.43	5.9	ug/l	167560	4	12.90	1421580	50.0
unknown14.62	14.62	5.5	ug/l	155660	4	12.90	1421580	50.0
6-Tridecene, 7-me...	14.81	6.7	ug/l	191594	4	12.90	1421580	50.0
unknown15.09	15.09	7.0	ug/l	197926	4	12.90	1421580	50.0
unknown15.37	15.37	6.4	ug/l	181654	4	12.90	1421580	50.0