

Data Path : Z:\VOASRV\HPCHEM1\MSVOA D\DATA\VD062818\
 Data File : VD059472.D
 Acq On : 28 Jun 2018 19:42
 Operator : VA/AP
 Sample : J3677-03
 Misc : 5.02α/5ml/MSVOA D/SOIL
 ALS Vial : 13 Sample Multiplier: 1

Instrument :
 MSVOA_D
 ClientSampleId :
 93-95-B2(0-2.5)

Integration Parameters: RTEINT.P
 Integrator: RTE
 Smoothing : ON Filtering: 5
 Sampling : 1 Min Area: 3 % of largest Peak
 Start Thrs: 0.2 Max Peaks: 100
 Stop Thrs : 0 Peak Location: TOP

If leading or trailing edge < 100 prefer < Baseline drop else tangent >
 Peak separation: 5

Method : Z:\VOASRV\HPCHEM1\MSVOA_D\METHOD\82D062518S.M
 Title : SW846 8260

Signal : TIC

peak #	R.T. min	first scan	max scan	last scan	PK TY	peak height	corr. area	corr. % max.	% of total
1	1.217	94	101	103	rBV	846184	1904963	59.16%	10.680%
2	1.266	103	106	131	rVB	1059042	3219860	100.00%	18.052%
3	3.067	285	289	299	rBV2	36677	91100	2.83%	0.511%
4	3.737	353	357	364	rVB2	13440	37668	1.17%	0.211%
5	4.849	463	470	477	rBV	30701	102738	3.19%	0.576%
6	5.548	535	541	546	rBV2	357531	973788	30.24%	5.459%
7	5.647	546	551	569	rVB	637235	1828136	56.78%	10.249%
8	6.021	581	589	604	rVB	258681	706616	21.95%	3.962%
9	6.690	651	657	670	rBV	795341	1954163	60.69%	10.956%
10	8.708	857	862	870	rBV	723385	1560983	48.48%	8.751%
11	9.476	935	940	946	rBV2	11537	32708	1.02%	0.183%
12	10.687	1059	1063	1071	rBV	1146145	2087529	64.83%	11.703%
13	11.937	1186	1190	1200	rVB	841682	1264522	39.27%	7.089%
14	12.095	1202	1206	1210	rBV	129877	196425	6.10%	1.101%
15	12.912	1285	1289	1295	rBV	1391775	1875796	58.26%	10.516%

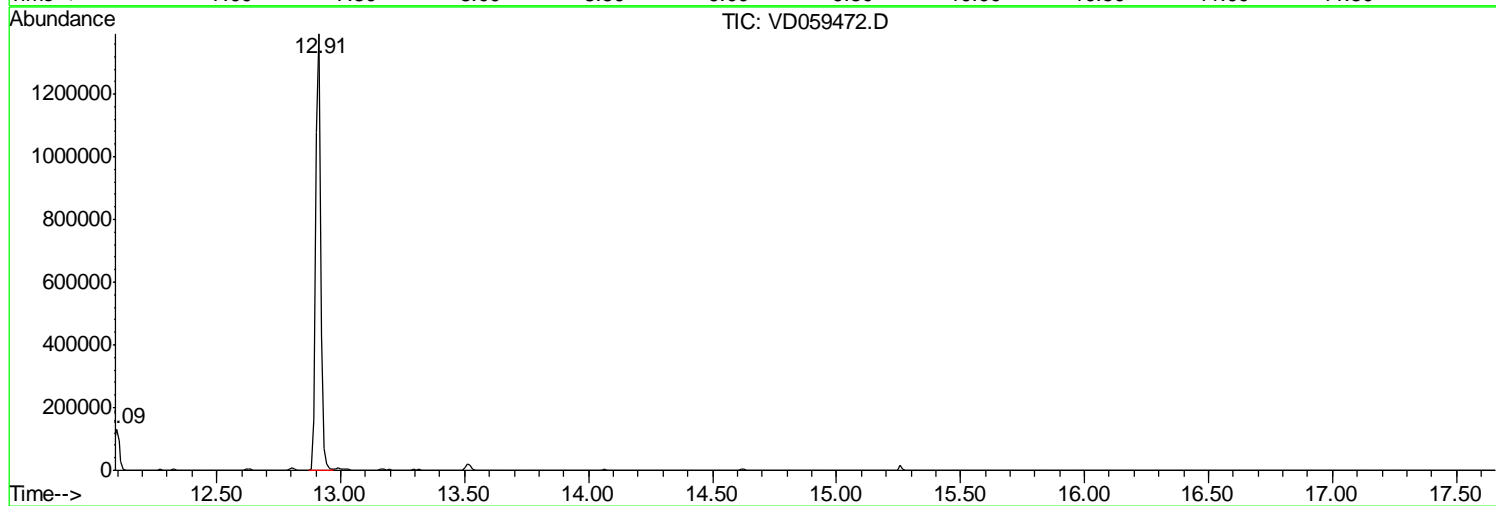
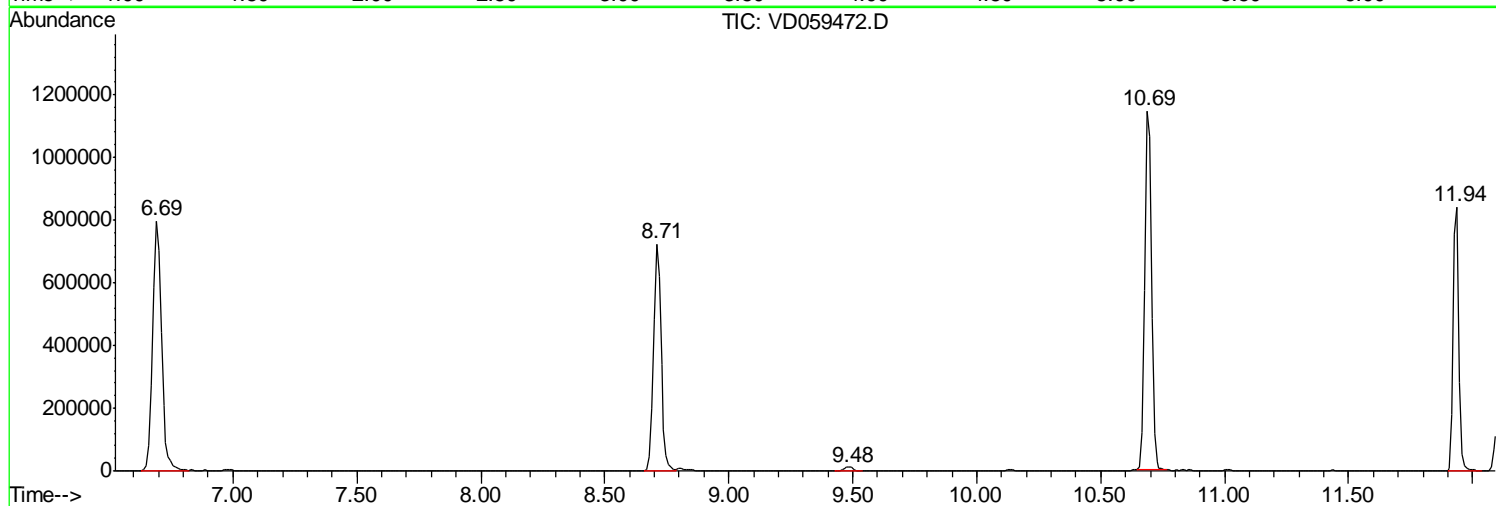
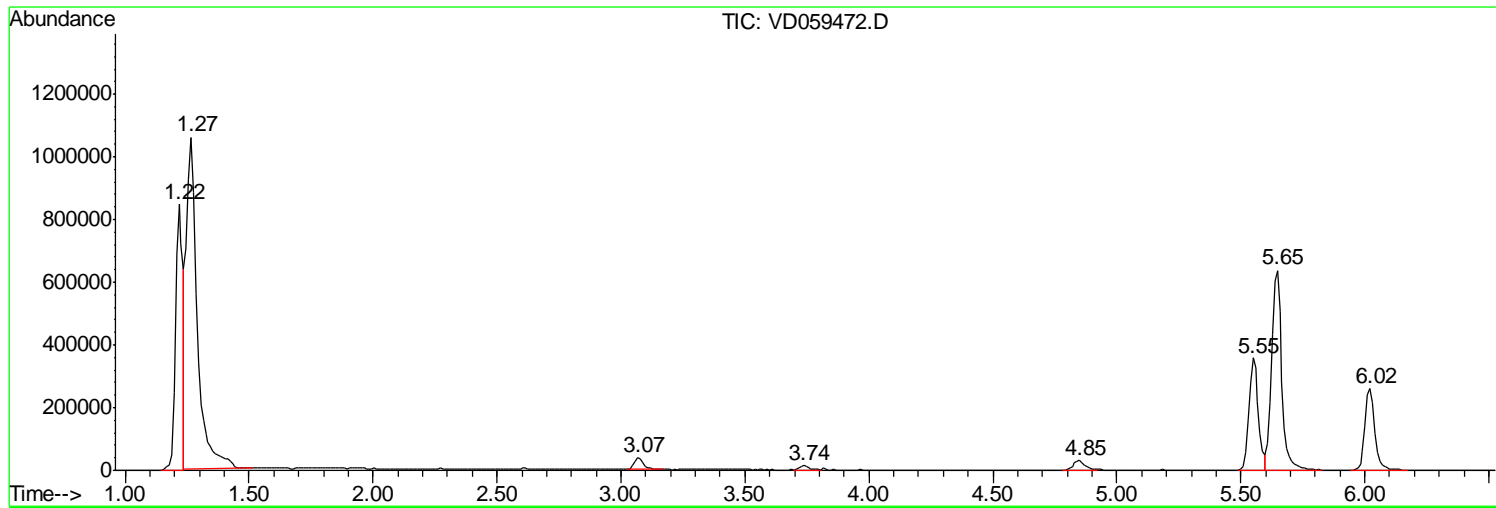
Sum of corrected areas: 17836995

Data Path : Z:\VOASRV\HPCHEM1\MSVOA D\DATA\VD062818\
Data File : VD059472.D
Acq On : 28 Jun 2018 19:42
Operator : VA/AP
Sample : J3677-03
Misc : 5.02µ/5ml/MSVOA D/SOIL
ALS Vial : 13 Sample Multiplier: 1

Instrument :
MSVOA_D
ClientSampled :
93-95-B2(0-2.5)

Quant Method : Z:\VOASRV\HPCHEM1\MSVOA_D\METHOD\82D062518S.M
Quant Title : SW846 8260

TIC Library : C:\DATABASE\NIST11.L
TIC Integration Parameters: LSCINT.P



Data Path : Z:\VOASRV\HPCHEM1\MSVOA_D\DATA\VD062818\
Data File : VD059472.D
Acq On : 28 Jun 2018 19:42
Operator : VA/AP
Sample : J3677-03
Misc : 5.02g/5ml/MSVOA_D/SOIL
ALS Vial : 13 Sample Multiplier: 1

Instrument :
MSVOA_D
ClientSampleId :
93-95-B2(0-2.5)

Quant Method : Z:\VOASRV\HPCHEM1\MSVOA_D\METHOD\82D062518S.M
Quant Title : SW846 8260

TIC Library : C:\DATABASE\NIST11.L
TIC Integration Parameters: LSCINT.P

No Library Search Compounds Detected

Data Path : Z:\VOASRV\HPCHEM1\MSVOA_D\DATA\VD062818\
Data File : VD059472.D
Acq On : 28 Jun 2018 19:42
Operator : VA/AP
Sample : J3677-03
Misc : 5.02g/5ml/MSVOA_D/SOIL
ALS Vial : 13 Sample Multiplier: 1

Instrument :
MSVOA_D
ClientSampleId :
93-95-B2(0-2.5)

Quant Method : Z:\VOASRV\HPCHEM1\MSVOA_D\METHOD\82D062518S.M
Quant Title : SW846 8260

TIC Library : C:\DATABASE\NIST11.L
TIC Integration Parameters: LSCINT.P

TIC Top Hit name	RT	EstConc	Units	Response	--Internal Standard--			
					#	RT	Resp	Conc
