

Data Path : Z:\voasrv\HPCHEM1\MSVOA_D\Data\VD062923\
 Data File : VD076640.D
 Acq On : 29 Jun 2023 15:56
 Operator : KP/SY
 Sample : O3458-16RE
 Misc : 5.12G/10.0ml/MSVOA_D/SOIL
 ALS Vial : 15 Sample Multiplier: 1

Instrument :
 MSVOA_D
 ClientSampleId :

Quant Time: Jun 30 01:15:59 2023
 Quant Method : Z:\voasrv\HPCHEM1\MSVOA_D\Method\SFAMDLM061523SMA.M
 Quant Title : SFAM01.0
 QLast Update : Fri Jun 16 01:50:34 2023
 Response via : Initial Calibration

Compound	R.T.	QIon	Response	Conc	Units	Dev(Min)
Internal Standards						
1) 1,4-Difluorobenzene	0.000	114	0	0.000	ug/L	-8.78
28) Chlorobenzene-d5	11.593	117	173	25.000	ug/L	# 0.01
58) 1,4-Dichlorobenzene-d4	13.287	152	259	25.000	ug/L	-0.24
System Monitoring Compounds						
4) Vinyl Chloride-d3	0.000	65	0	0.000	ug/L	
Spiked Amount	25.000	Range 30 - 150	Recovery	=	0.000%#	
7) Chloroethane-d5	0.000	69	0	0.000	ug/L	
Spiked Amount	25.000	Range 30 - 150	Recovery	=	0.000%#	
11) 1,1-Dichloroethene-d2	0.000	65	0	0.000	ug/L	
Spiked Amount	25.000	Range 45 - 110	Recovery	=	0.000%#	
21) 2-Butanone-d5	7.034	46	137	0.000	ug/L	0.05
Spiked Amount	50.000	Range 20 - 135	Recovery	=	0.000%#	
24) Chloroform-d	0.000	84	0	0.000	ug/L	
Spiked Amount	25.000	Range 40 - 150	Recovery	=	0.000%#	
26) 1,2-Dichloroethane-d4	0.000	65	0	0.000	ug/L	
Spiked Amount	25.000	Range 70 - 130	Recovery	=	0.000%#	
32) Benzene-d6	0.000	84	0	0.000	ug/L	
Spiked Amount	25.000	Range 20 - 135	Recovery	=	0.000%#	
36) 1,2-Dichloropropane-d6	9.222	67	354	104.796	ug/L	0.01
Spiked Amount	25.000	Range 70 - 120	Recovery	=	419.200%#	
41) Toluene-d8	10.275	98	116	11.838	ug/L	0.00
Spiked Amount	25.000	Range 30 - 130	Recovery	=	47.360%	
43) trans-1,3-Dichloroprop...	10.528	79	281	199.998	ug/L	0.00
Spiked Amount	25.000	Range 30 - 135	Recovery	=	800.000%#	
47) 2-Hexanone-d5	0.000	63	0	0.000	ug/L	
Spiked Amount	50.000	Range 20 - 135	Recovery	=	0.000%#	
56) 1,1,2,2-Tetrachloroeth...	12.604	84	223	92.791	ug/L	-0.05
Spiked Amount	25.000	Range 45 - 120	Recovery	=	371.160%#	
66) 1,2-Dichlorobenzene-d4	13.916	152	134	14.115	ug/L	0.10
Spiked Amount	25.000	Range 75 - 120	Recovery	=	56.480%#	
Target Compounds						
29) Cyclohexane	8.069	56	72	15.651	ug/L	# 1
34) Trichloroethene	9.022	95	124	42.159	ug/L	# 4
35) Methylcyclohexane	9.263	83	113	23.824	ug/L	# 1
38) Bromodichloromethane	9.581	83	224	62.914	ug/L	# 26
40) 4-Methyl-2-pentanone	10.157	43	70	36.047	ug/L	# 44
42) Toluene	10.328	91	327	26.725	ug/L	# 23
45) 1,1,2-Trichloroethane	10.740	97	455	212.502	ug/L	# 46
48) 2-Hexanone	10.928	43	332	249.628	ug/L	# 43
49) Dibromochloromethane	11.193	129	125	51.371	ug/L	# 78
50) 1,2-Dibromoethane	11.175	107	694	333.948	ug/L	# 1
51) Chlorobenzene	11.669	112	163	21.338	ug/L	# 9
52) Ethylbenzene	11.622	91	423	32.074	ug/L	# 85
53) m,p-Xylene	11.787	106	256	49.394	ug/L	# 83
54) o-Xylene	12.098	106	55	11.145	ug/L	# 76
57) 1,1,2,2-Tetrachloroethane	12.687	83	587	239.884	ug/L	# 55
59) Bromoform	12.263	173	134	28.901	ug/L	# 89
60) Isopropylbenzene	12.410	105	283	7.144	ug/L	# 1
61) 1,2,3-Trichloropropane	12.804	75	1380	274.546	ug/L	# 92
62) 1,3,5-Trimethylbenzene	12.816	105	566	17.858	ug/L	# 98

Data Path : Z:\voasrv\HPCHEM1\MSVOA_D\Data\VD062923\
 Data File : VD076640.D
 Acq On : 29 Jun 2023 15:56
 Operator : KP/SY
 Sample : O3458-16RE
 Misc : 5.12G/10.0ml/MSVOA_D/SOIL
 ALS Vial : 15 Sample Multiplier: 1

Instrument :
 MSVOA_D
 ClientSampleId :

Quant Time: Jun 30 01:15:59 2023
 Quant Method : Z:\voasrv\HPCHEM1\MSVOA_D\Method\SFAMDLM061523SMA.M
 Quant Title : SFAM01.0
 QLast Update : Fri Jun 16 01:50:34 2023
 Response via : Initial Calibration

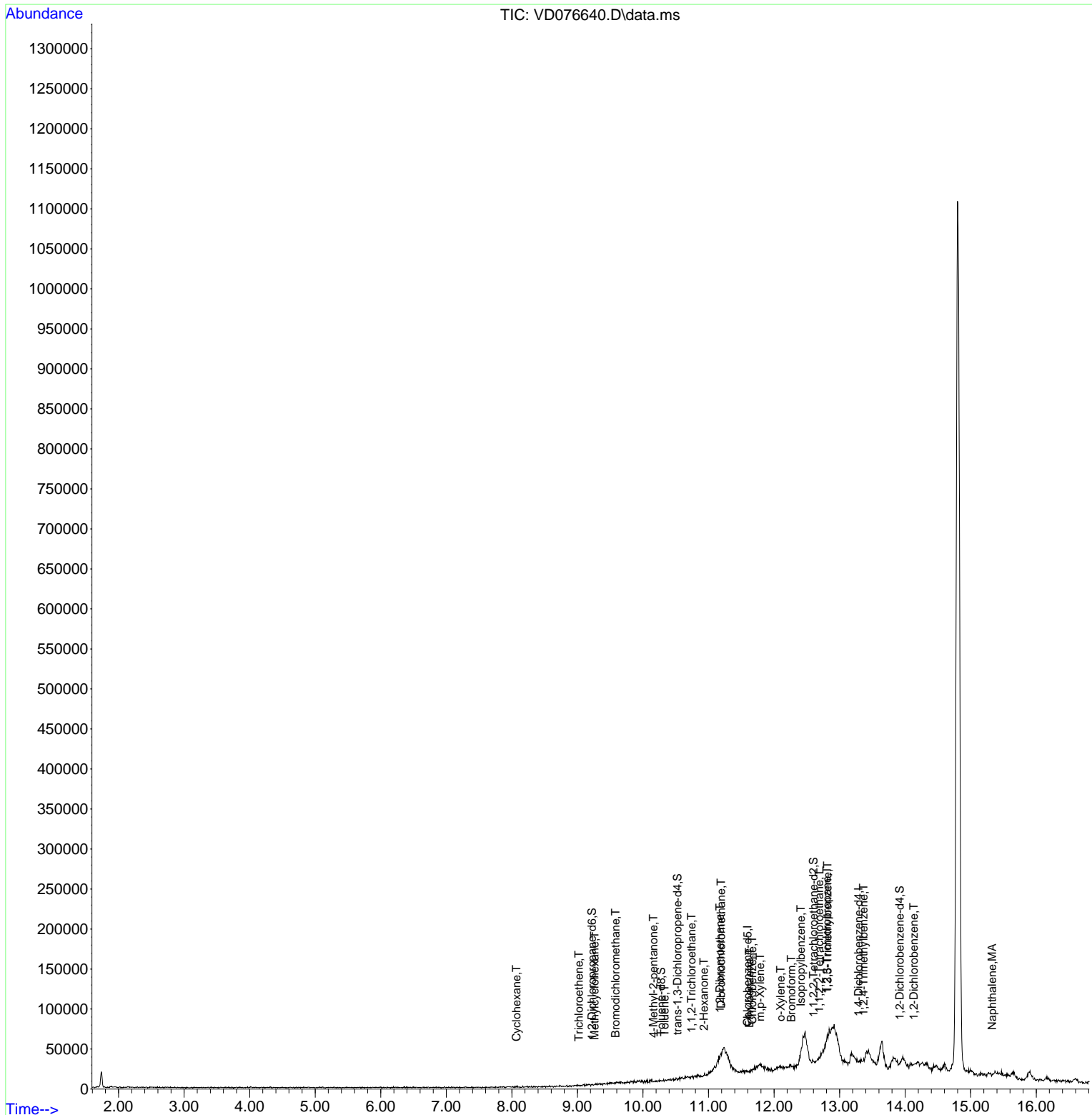
Compound	R.T.	QIon	Response	Conc	Units	Dev(Min)
63) 1,2,4-Trimethylbenzene	13.363	105	582	18.608	ug/L	95
67) 1,2-Dichlorobenzene	14.134	146	118	7.516	ug/L #	1
71) Naphthalene	15.328	128	141	7.041	ug/L #	1

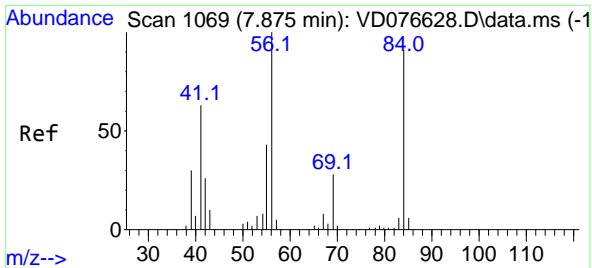
(#) = qualifier out of range (m) = manual integration (+) = signals summed

Data Path : Z:\voasrv\HPCHEM1\MSVOA_D\Data\VD062923\
 Data File : VD076640.D
 Acq On : 29 Jun 2023 15:56
 Operator : KP/SY
 Sample : 03458-16RE
 Misc : 5.12G/10.0ml/MSVOA_D/SOIL
 ALS Vial : 15 Sample Multiplier: 1

Instrument :
 MSVOA_D
 ClientSampleId :

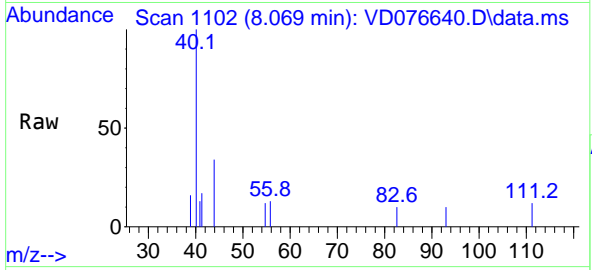
Quant Time: Jun 30 01:15:59 2023
 Quant Method : Z:\voasrv\HPCHEM1\MSVOA_D\Method\SFAMDLM061523SMA.M
 Quant Title : SFAM01.0
 QLast Update : Fri Jun 16 01:50:34 2023
 Response via : Initial Calibration





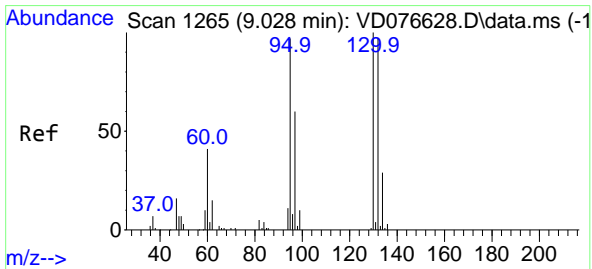
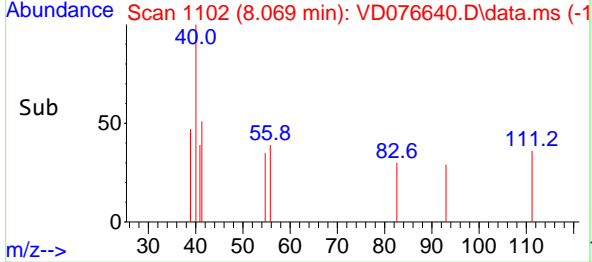
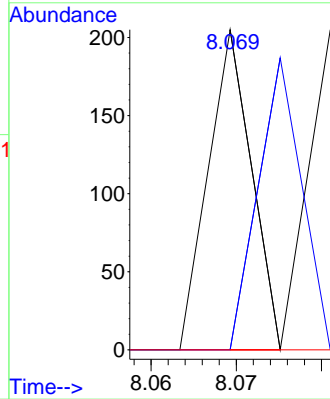
#29
 Cyclohexane
 Concen: 15.651 ug/L
 RT: 8.069 min Scan# 1102
 Delta R.T. 0.194 min
 Lab File: VD076640.D
 Acq: 29 Jun 2023 15:56

Instrument :
 MSVOA_D
 ClientSampleId :

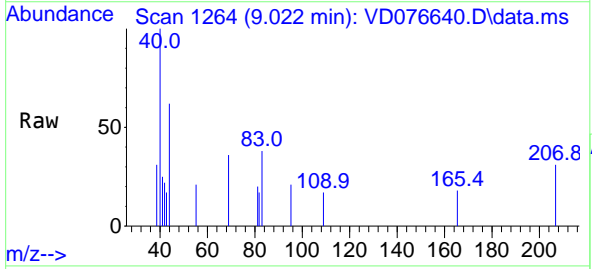


Tgt Ion: 56 Resp: 72

Ion	Ratio	Lower	Upper
56	100		
69	206.9	23.4	35.0#
84	0.0	66.3	99.5#

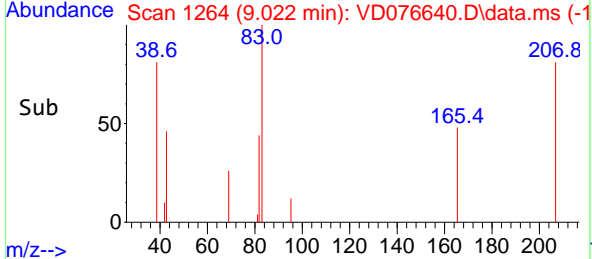
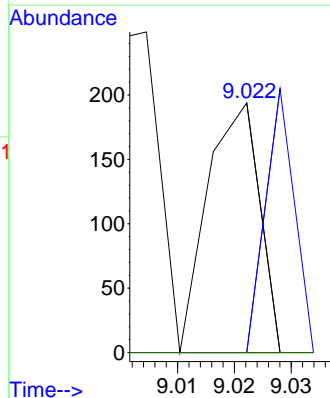


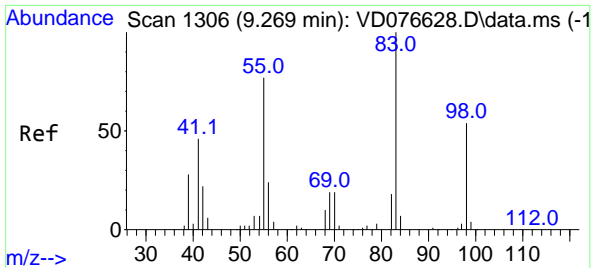
#34
 Trichloroethene
 Concen: 42.159 ug/L
 RT: 9.022 min Scan# 1264
 Delta R.T. -0.006 min
 Lab File: VD076640.D
 Acq: 29 Jun 2023 15:56



Tgt Ion: 95 Resp: 124

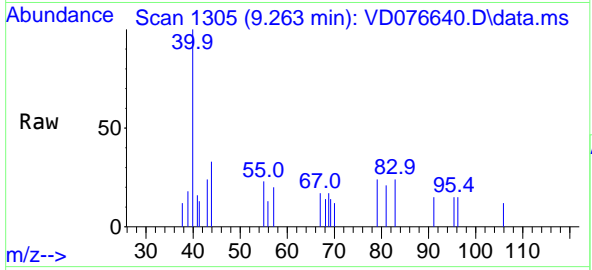
Ion	Ratio	Lower	Upper
95	100		
97	0.0	43.1	80.1#
132	0.0	71.8	133.4#
130	0.0	71.9	133.5#





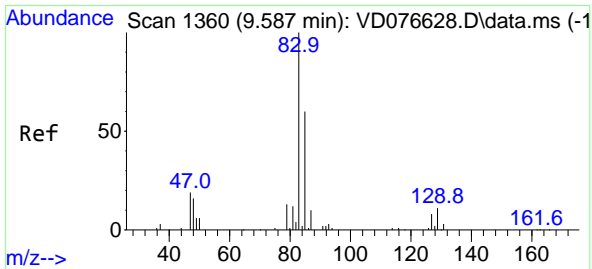
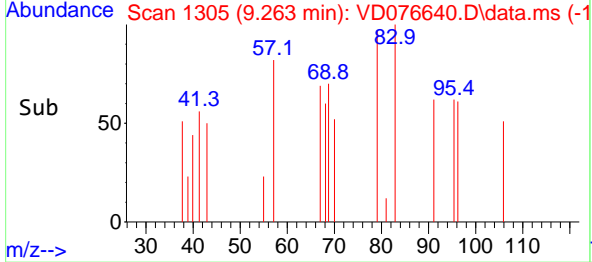
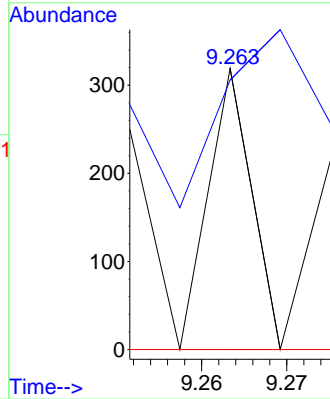
#35
 Methylcyclohexane
 Concen: 23.824 ug/L
 RT: 9.263 min Scan# 111
 Delta R.T. -0.006 min
 Lab File: VD076640.D
 Acq: 29 Jun 2023 15:56

Instrument :
 MSVOA_D
 ClientSampleId :

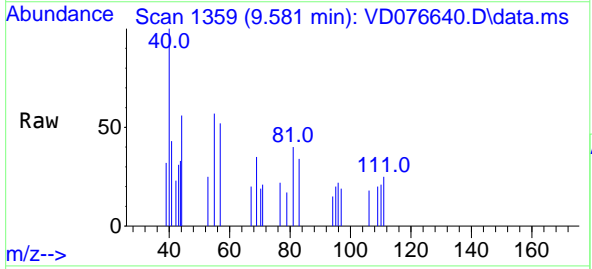


Tgt Ion: 83 Resp: 113

Ion	Ratio	Lower	Upper
83	100		
55	176.1	59.8	89.6#
98	0.0	37.8	56.6#

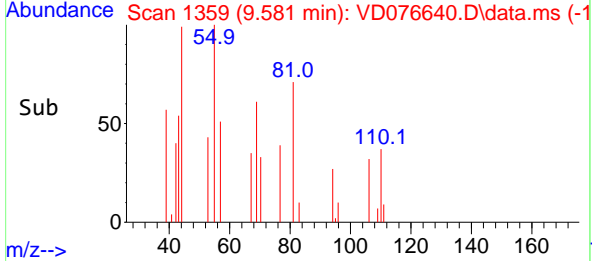
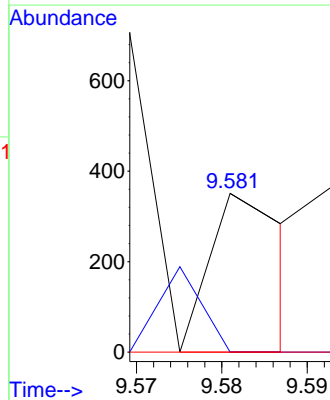


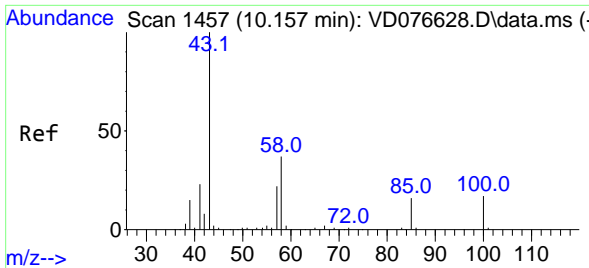
#38
 Bromodichloromethane
 Concen: 62.914 ug/L
 RT: 9.581 min Scan# 1359
 Delta R.T. 0.000 min
 Lab File: VD076640.D
 Acq: 29 Jun 2023 15:56



Tgt Ion: 83 Resp: 224

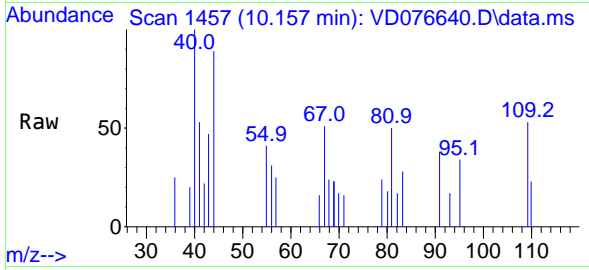
Ion	Ratio	Lower	Upper
83	100		
85	0.0	43.9	81.5#
127	0.0	6.6	9.8#



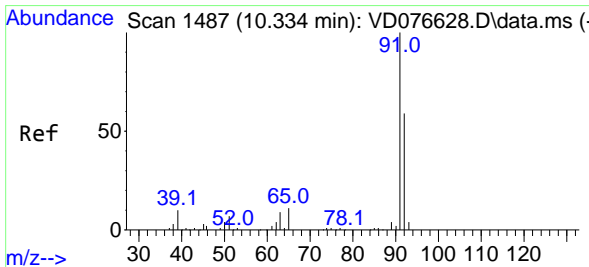
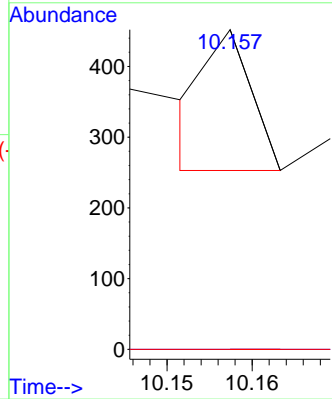
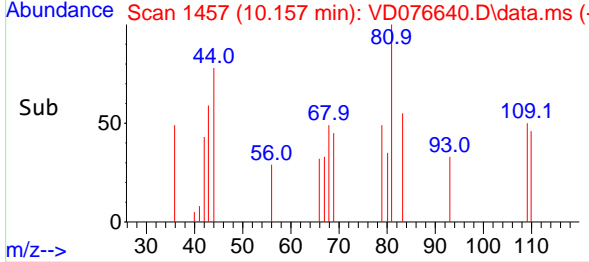


#40
 4-Methyl-2-pentanone
 Concen: 36.047 ug/L
 RT: 10.157 min Scan# 1457
 Delta R.T. 0.000 min
 Lab File: VD076640.D
 Acq: 29 Jun 2023 15:56

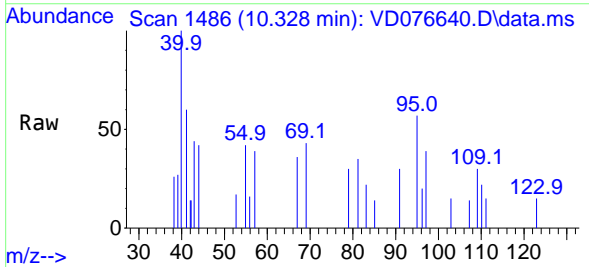
Instrument :
 MSVOA_D
 ClientSampleId :



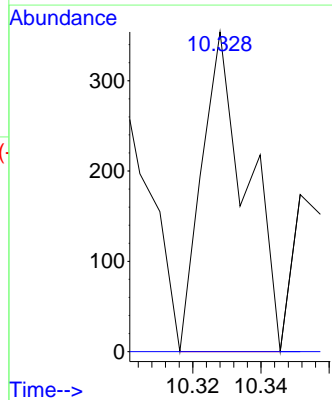
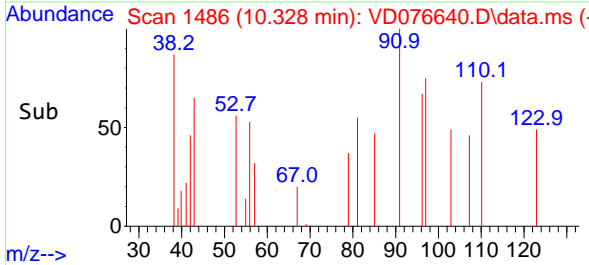
Tgt Ion: 43 Resp: 70
 Ion Ratio Lower Upper
 43 100
 58 0.0 30.7 46.1#
 100 0.0 11.0 16.4#

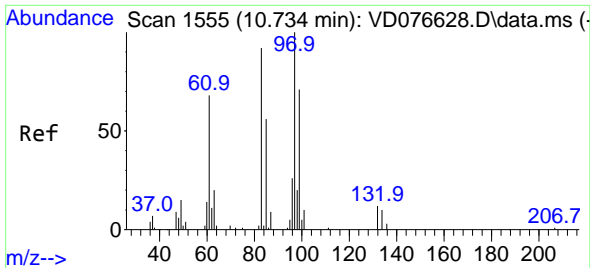


#42
 Toluene
 Concen: 26.725 ug/L
 RT: 10.328 min Scan# 1486
 Delta R.T. -0.006 min
 Lab File: VD076640.D
 Acq: 29 Jun 2023 15:56



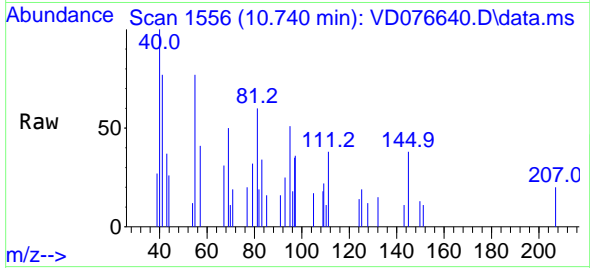
Tgt Ion: 91 Resp: 327
 Ion Ratio Lower Upper
 91 100
 92 0.0 39.3 73.1#





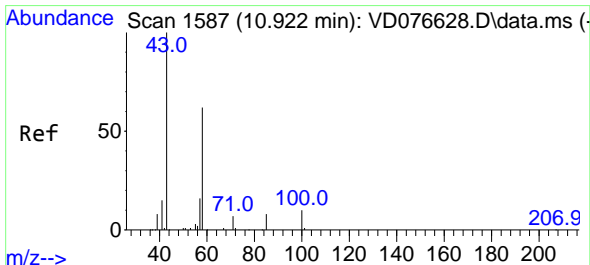
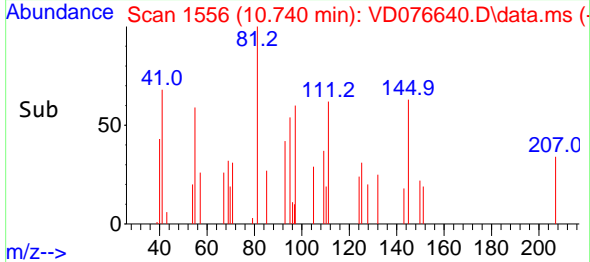
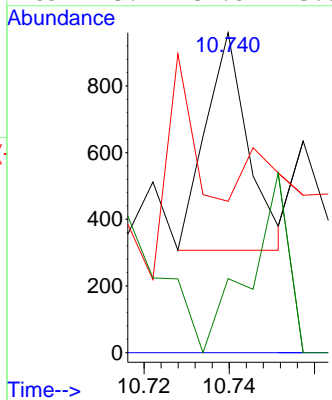
#45
 1,1,2-Trichloroethane
 Concen: 212.502 ug/L
 RT: 10.740 min Scan# 1555
 Delta R.T. 0.006 min
 Lab File: VD076640.D
 Acq: 29 Jun 2023 15:56

Instrument : MSVOA_D
 ClientSampleId :

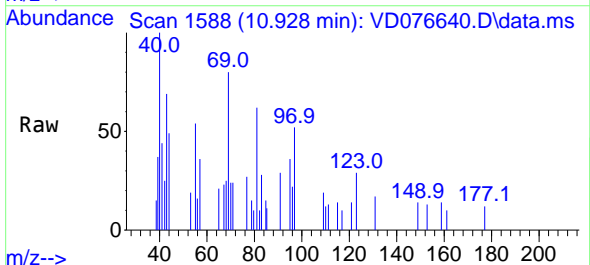


Tgt Ion: 97 Resp: 455

Ion	Ratio	Lower	Upper
97	100		
99	0.0	41.9	77.9#
83	47.3	59.2	110.0#
85	23.1	39.8	73.8#

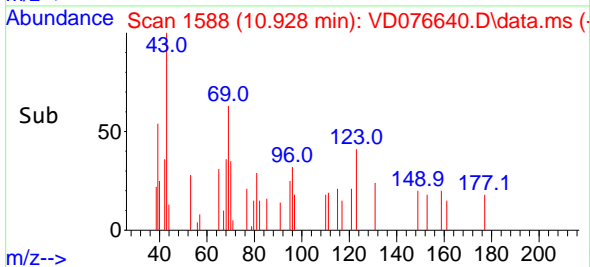
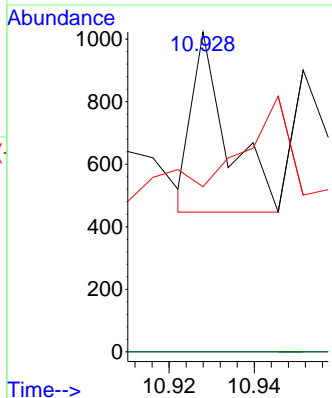


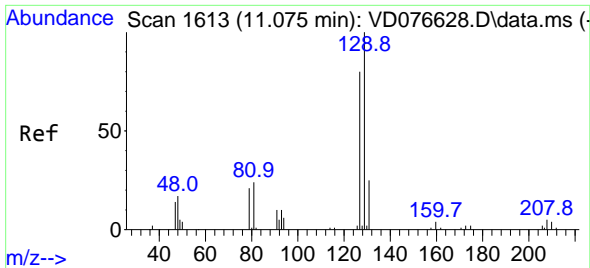
#48
 2-Hexanone
 Concen: 249.628 ug/L
 RT: 10.928 min Scan# 1588
 Delta R.T. 0.006 min
 Lab File: VD076640.D
 Acq: 29 Jun 2023 15:56



Tgt Ion: 43 Resp: 332

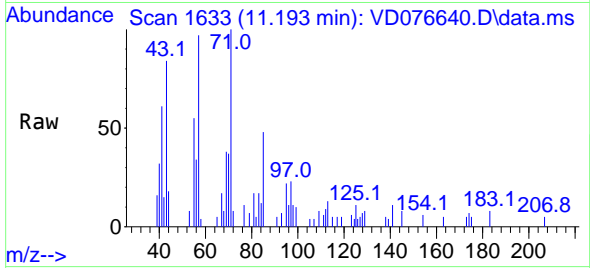
Ion	Ratio	Lower	Upper
43	100		
58	0.0	42.9	64.3#
57	24.1	13.7	20.5#
100	0.0	9.4	14.0#



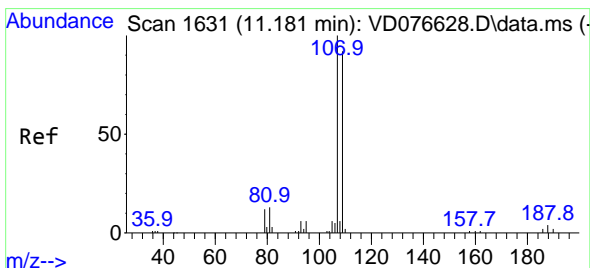
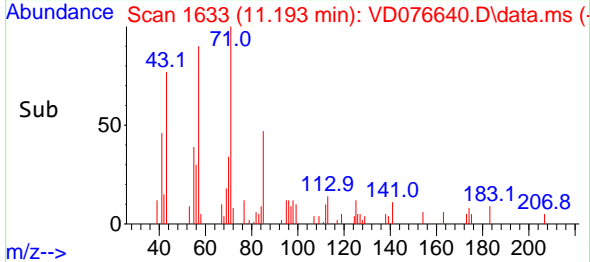
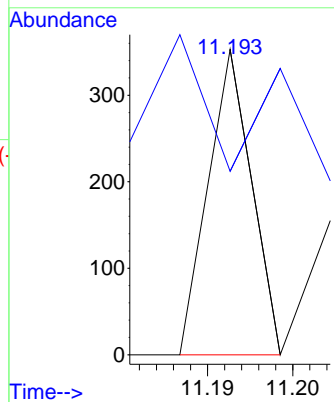


#49
 Dibromochloromethane
 Concen: 51.371 ug/L
 RT: 11.193 min Scan# 1633
 Delta R.T. 0.118 min
 Lab File: VD076640.D
 Acq: 29 Jun 2023 15:56

Instrument : MSVOA_D
 ClientSampleId :

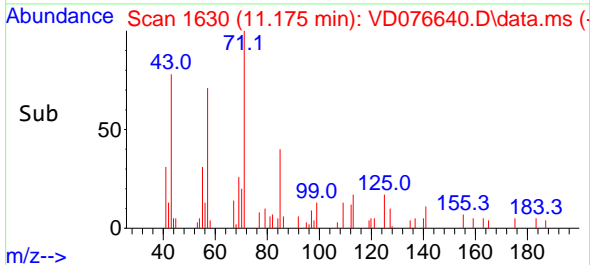
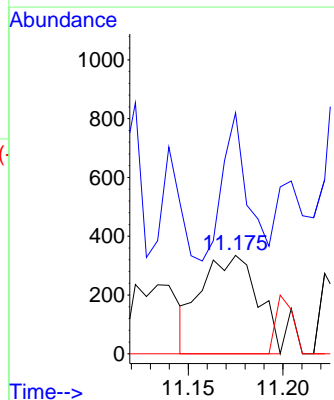
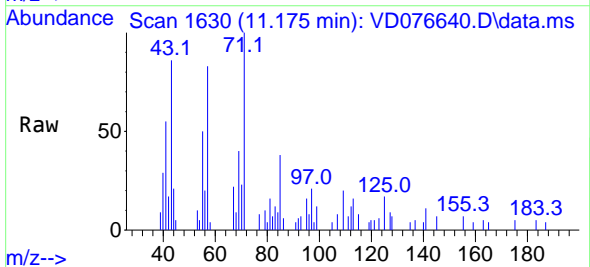


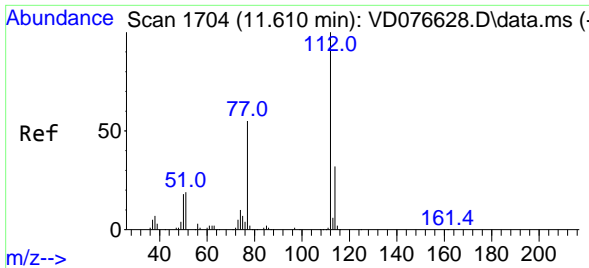
Tgt Ion:129 Resp: 125
 Ion Ratio Lower Upper
 129 100
 127 60.1 55.2 102.6



#50
 1,2-Dibromoethane
 Concen: 333.948 ug/L
 RT: 11.175 min Scan# 1630
 Delta R.T. -0.006 min
 Lab File: VD076640.D
 Acq: 29 Jun 2023 15:56

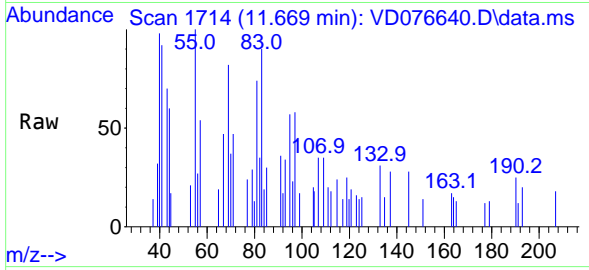
Tgt Ion:107 Resp: 694
 Ion Ratio Lower Upper
 107 100
 109 244.8 58.8 109.2#
 188 0.0 2.9 4.3#





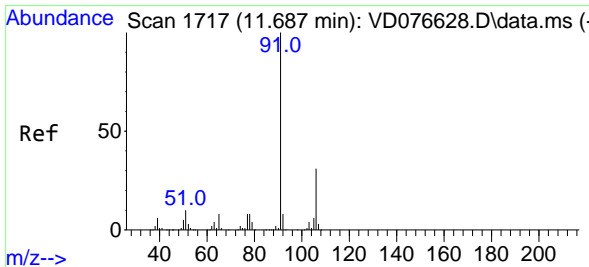
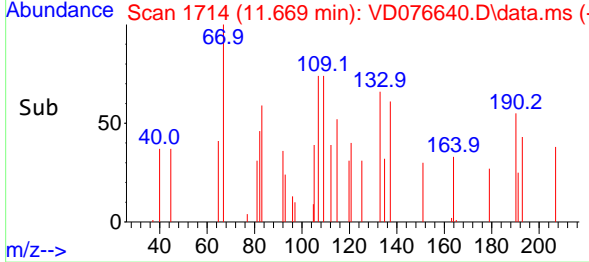
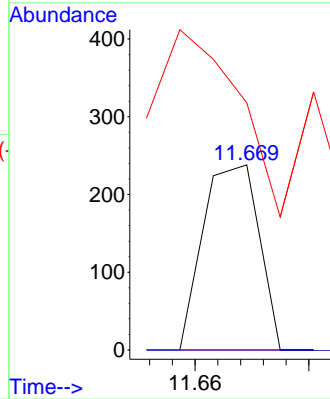
#51
 Chlorobenzene
 Concen: 21.338 ug/L
 RT: 11.669 min Scan# 11
 Delta R.T. 0.065 min
 Lab File: VD076640.D
 Acq: 29 Jun 2023 15:56

Instrument :
 MSVOA_D
 ClientSampleId :



Tgt Ion:112 Resp: 163

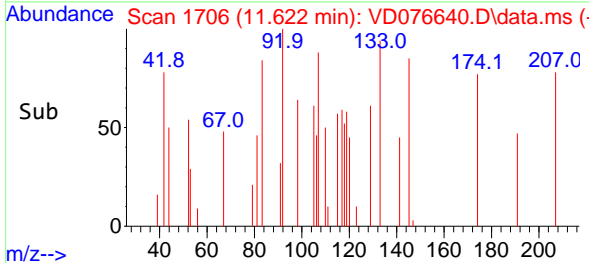
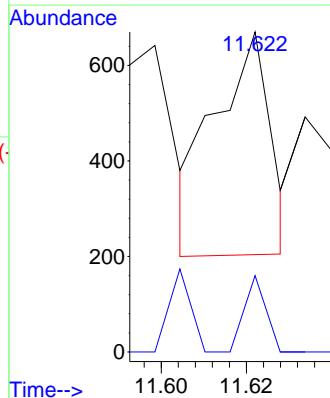
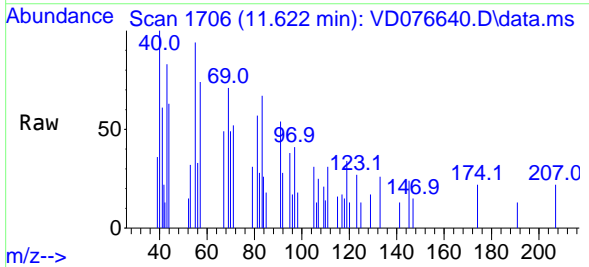
Ion	Ratio	Lower	Upper
112	100		
114	0.0	21.5	39.9#
77	133.6	43.4	65.2#

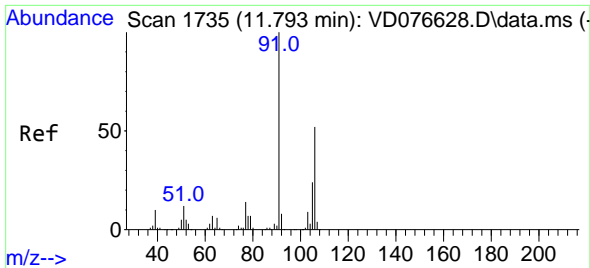


#52
 Ethylbenzene
 Concen: 32.074 ug/L
 RT: 11.622 min Scan# 1706
 Delta R.T. -0.059 min
 Lab File: VD076640.D
 Acq: 29 Jun 2023 15:56

Tgt Ion: 91 Resp: 423

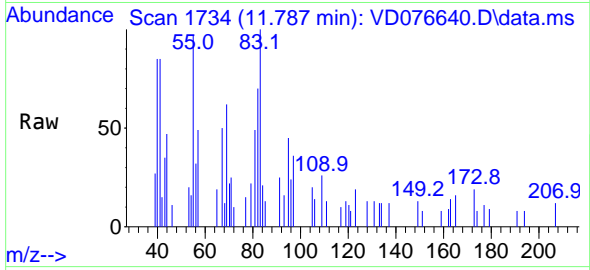
Ion	Ratio	Lower	Upper
91	100		
106	23.9	22.4	41.6



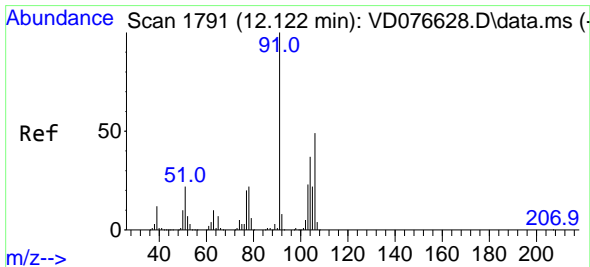
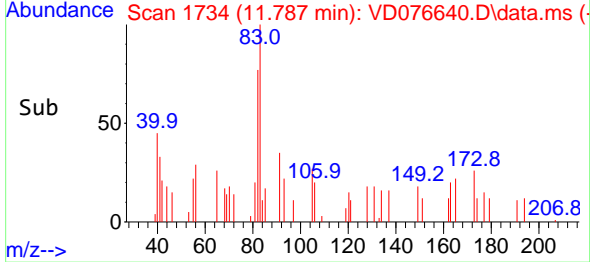
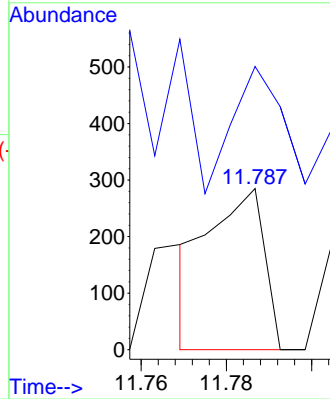


#53
 m,p-Xylene
 Concen: 49.394 ug/L
 RT: 11.787 min Scan# 1734
 Delta R.T. -0.006 min
 Lab File: VD076640.D
 Acq: 29 Jun 2023 15:56

Instrument : MSVOA_D
 ClientSampleId :

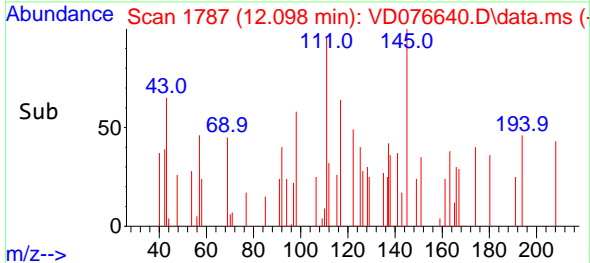
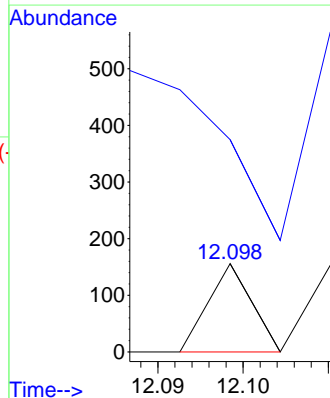
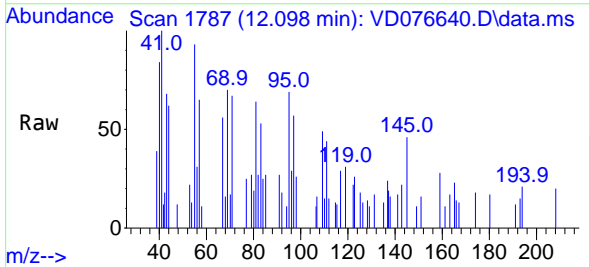


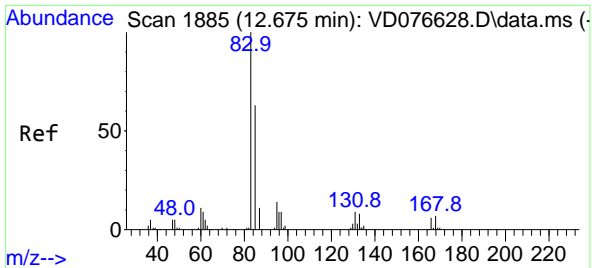
Tgt Ion:106 Resp: 256
 Ion Ratio Lower Upper
 106 100
 91 175.8 141.5 262.9



#54
 o-Xylene
 Concen: 11.145 ug/L
 RT: 12.098 min Scan# 1787
 Delta R.T. -0.024 min
 Lab File: VD076640.D
 Acq: 29 Jun 2023 15:56

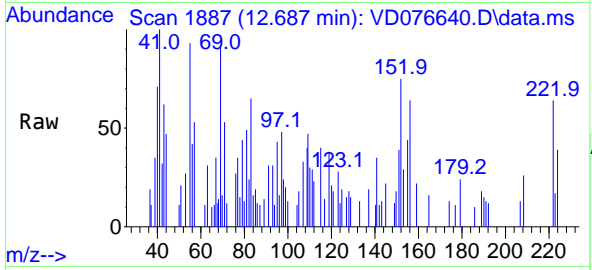
Tgt Ion:106 Resp: 55
 Ion Ratio Lower Upper
 106 100
 91 240.4 142.2 264.2





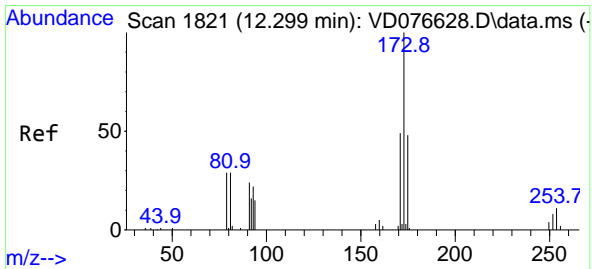
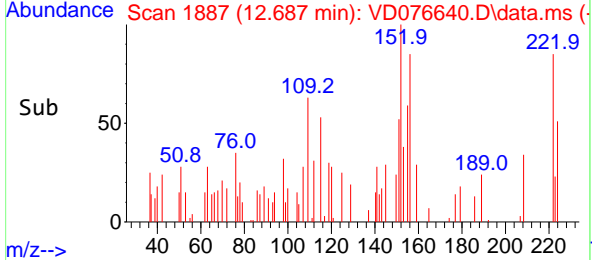
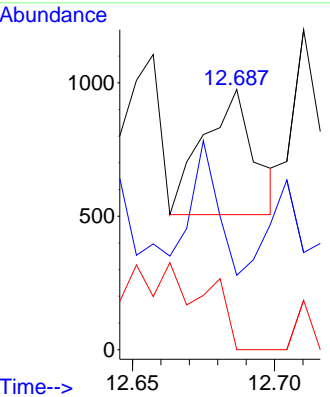
#57
 1,1,2,2-Tetrachloroethane
 Concen: 239.884 ug/L
 RT: 12.687 min Scan# 1887
 Delta R.T. 0.012 min
 Lab File: VD076640.D
 Acq: 29 Jun 2023 15:56

Instrument : MSVOA_D
 ClientSampleId :



Tgt Ion: 83 Resp: 587

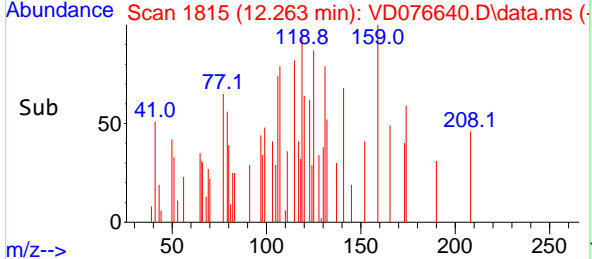
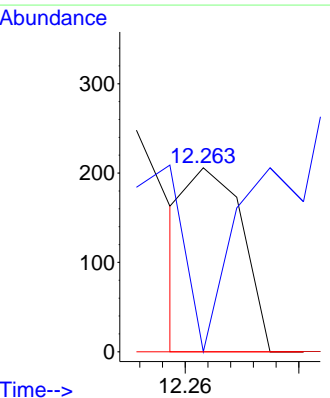
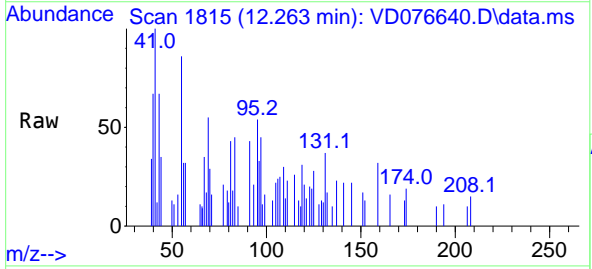
Ion	Ratio	Lower	Upper
83	100		
85	28.6	46.3	86.1#
131	0.0	7.0	10.4#

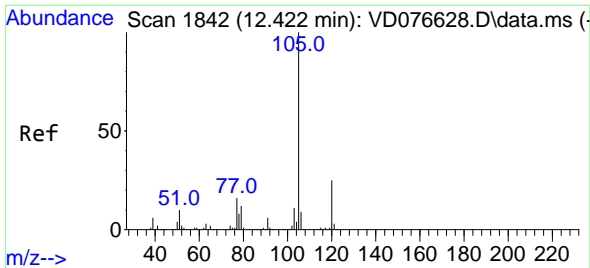


#59
 Bromoform
 Concen: 28.901 ug/L
 RT: 12.263 min Scan# 1815
 Delta R.T. -0.035 min
 Lab File: VD076640.D
 Acq: 29 Jun 2023 15:56

Tgt Ion: 173 Resp: 134

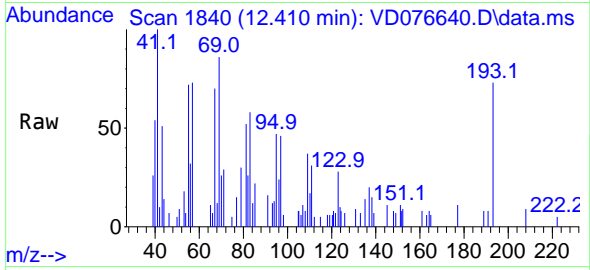
Ion	Ratio	Lower	Upper
173	100		
175	55.2	39.0	58.4
254	0.0	5.3	7.9#



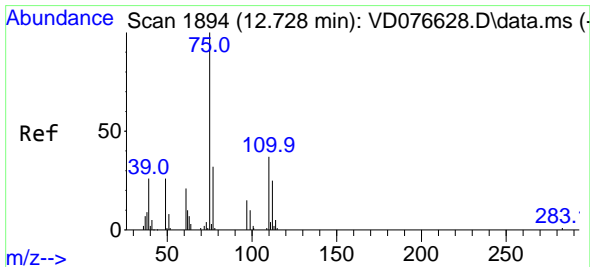
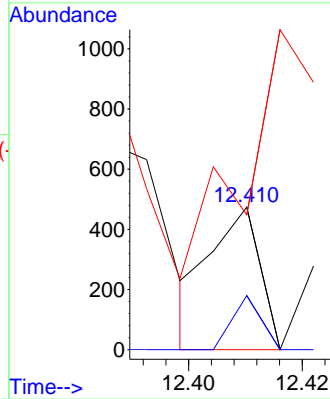
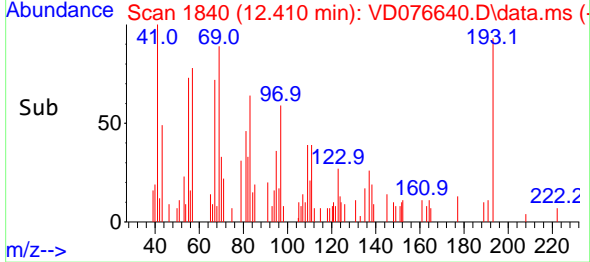


#60
 Isopropylbenzene
 Concen: 7.144 ug/L
 RT: 12.410 min Scan# 11
 Delta R.T. -0.012 min
 Lab File: VD076640.D
 Acq: 29 Jun 2023 15:56

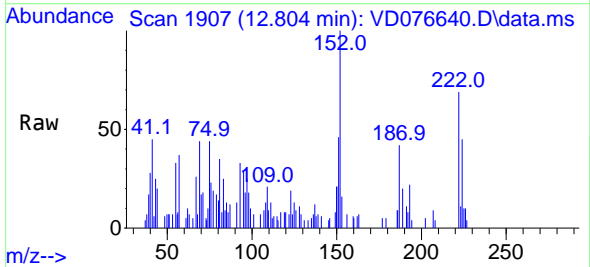
Instrument :
 MSVOA_D
 ClientSampleId :



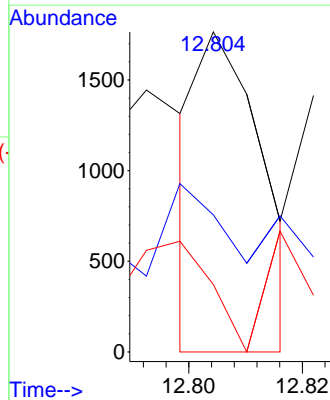
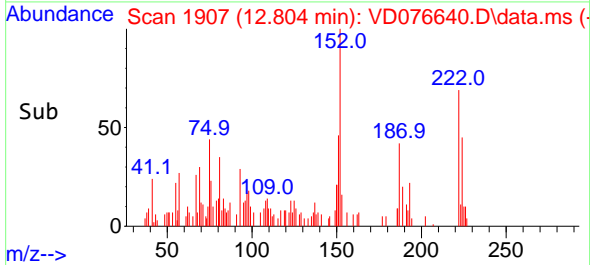
Tgt Ion:105 Resp: 283
 Ion Ratio Lower Upper
 105 100
 120 0.0 21.3 31.9#
 77 460.1 12.2 18.4#

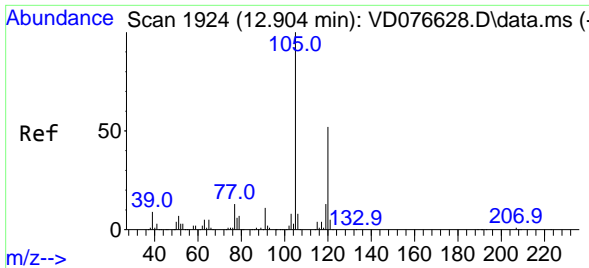


#61
 1,2,3-Trichloropropane
 Concen: 274.546 ug/L
 RT: 12.804 min Scan# 1907
 Delta R.T. 0.076 min
 Lab File: VD076640.D
 Acq: 29 Jun 2023 15:56



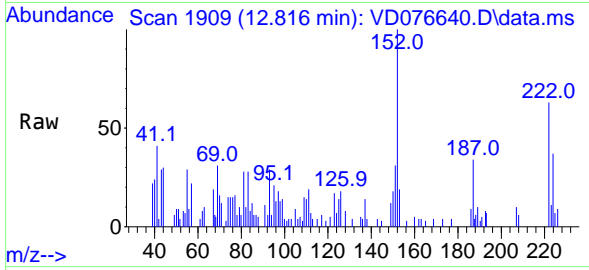
Tgt Ion: 75 Resp: 1380
 Ion Ratio Lower Upper
 75 100
 77 31.9 27.2 40.8
 110 46.7 31.8 47.6



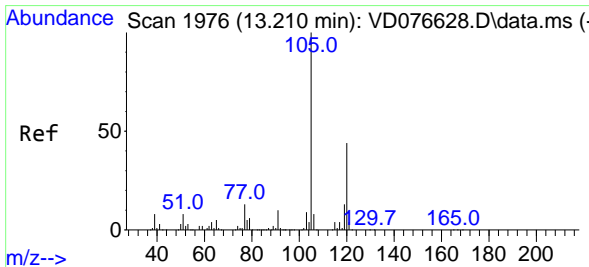
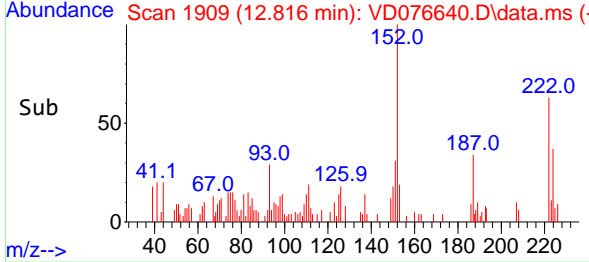
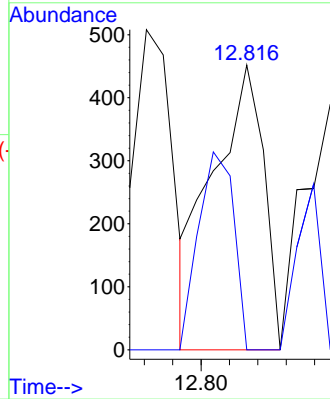


#62
 1,3,5-Trimethylbenzene
 Concen: 17.858 ug/L
 RT: 12.816 min Scan# 1924
 Delta R.T. -0.088 min
 Lab File: VD076640.D
 Acq: 29 Jun 2023 15:56

Instrument :
 MSVOA_D
 ClientSampleId :

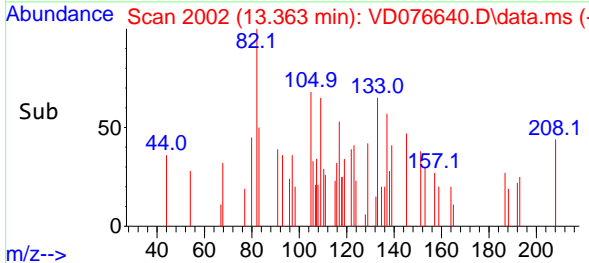
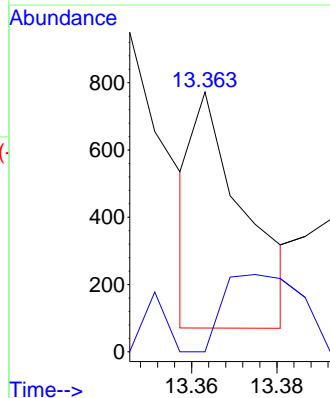
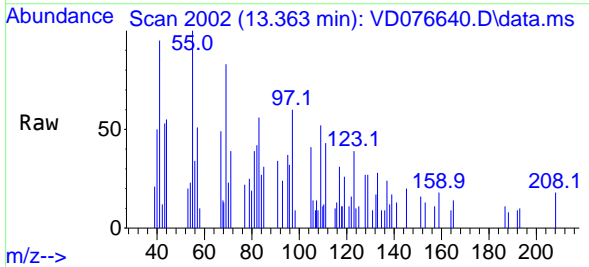


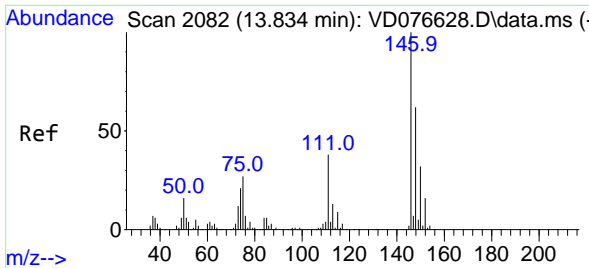
Tgt Ion:105 Resp: 566
 Ion Ratio Lower Upper
 105 100
 120 48.1 39.8 59.6



#63
 1,2,4-Trimethylbenzene
 Concen: 18.608 ug/L
 RT: 13.363 min Scan# 2002
 Delta R.T. 0.153 min
 Lab File: VD076640.D
 Acq: 29 Jun 2023 15:56

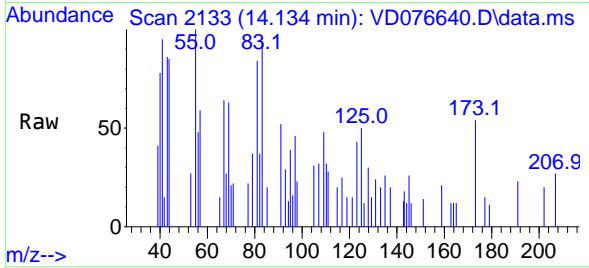
Tgt Ion:105 Resp: 582
 Ion Ratio Lower Upper
 105 100
 120 50.5 37.5 56.3



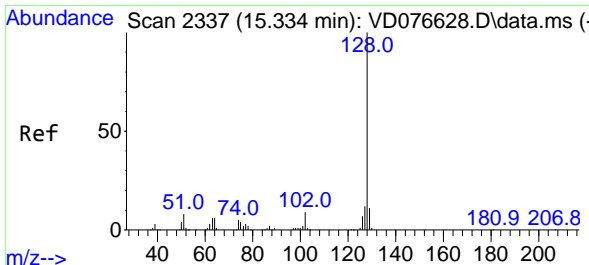
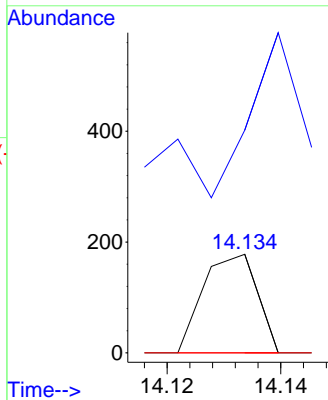
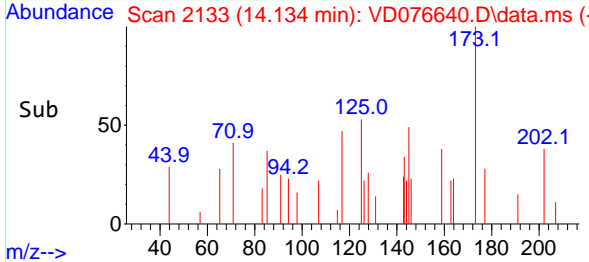


#67
 1,2-Dichlorobenzene
 Concen: 7.516 ug/L
 RT: 14.134 min Scan# 2133
 Delta R.T. 0.306 min
 Lab File: VD076640.D
 Acq: 29 Jun 2023 15:56

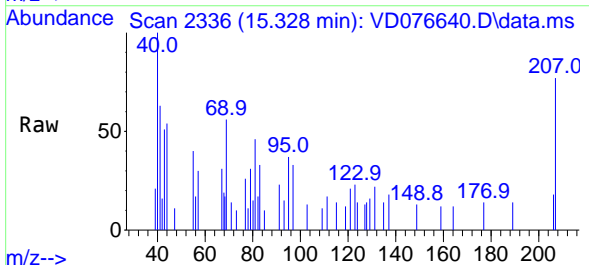
Instrument :
 MSVOA_D
 ClientSampleId :



Tgt Ion:146 Resp: 118
 Ion Ratio Lower Upper
 146 100
 111 225.8 31.3 46.9#
 148 0.0 51.7 77.5#



#71
 Naphthalene
 Concen: 7.041 ug/L
 RT: 15.328 min Scan# 2336
 Delta R.T. -0.006 min
 Lab File: VD076640.D
 Acq: 29 Jun 2023 15:56



Tgt Ion:128 Resp: 141
 Ion Ratio Lower Upper
 128 100
 127 0.0 10.8 16.2#
 129 170.2 8.6 12.8#

