

Data Path : Z:\voasrv\HPCHEM1\MSVOA\_D\Data\VD063023\  
 Data File : VD076667.D  
 Acq On : 30 Jun 2023 17:28  
 Operator : KP/SY  
 Sample : 03474-21  
 Misc : 6.59G/10.0ml/MSVOA\_D/SOIL  
 ALS Vial : 19 Sample Multiplier: 1

Instrument :  
 MSVOA\_D  
 ClientSampleId :  
 A46R2

Quant Time: Jul 03 01:31:28 2023  
 Quant Method : Z:\voasrv\HPCHEM1\MSVOA\_D\Method\SFAMDLM061523SMA.M  
 Quant Title : SFAM01.0  
 QLast Update : Fri Jun 16 01:50:34 2023  
 Response via : Initial Calibration

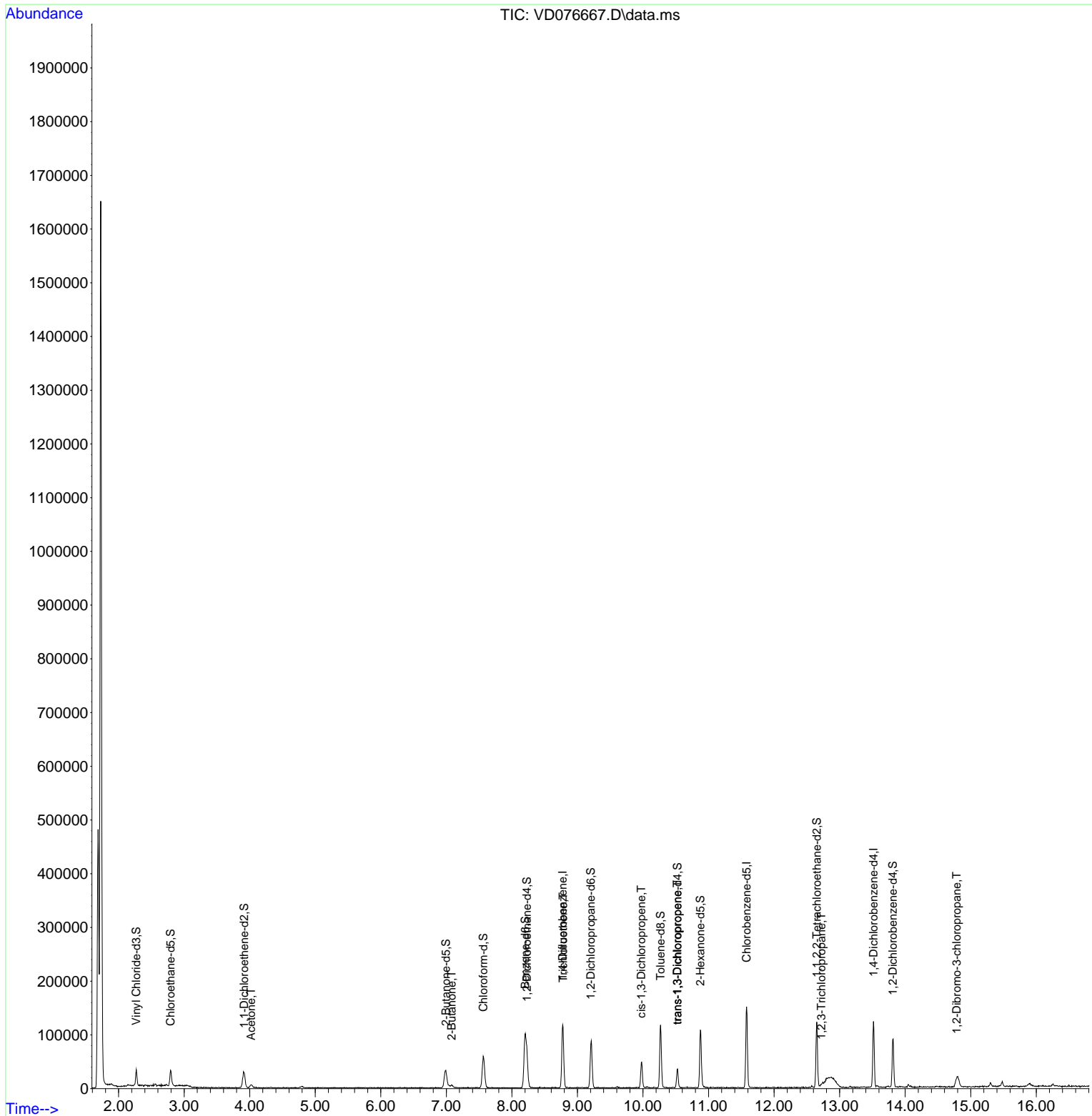
Compound	R.T.	QIon	Response	Conc	Units	Dev(Min)
Internal Standards						
1) 1,4-Difluorobenzene	8.775	114	101882	25.000	ug/L	0.00
28) Chlorobenzene-d5	11.581	117	83447	25.000	ug/L	0.00
58) 1,4-Dichlorobenzene-d4	13.516	152	31221	25.000	ug/L	0.00
System Monitoring Compounds						
4) Vinyl Chloride-d3	2.269	65	24570	9.903	ug/L	0.00
Spiked Amount	25.000	Range 30 - 150	Recovery =	39.600%		
7) Chloroethane-d5	2.793	69	27491	13.703	ug/L	0.00
Spiked Amount	25.000	Range 30 - 150	Recovery =	54.800%		
11) 1,1-Dichloroethene-d2	3.916	65	8448	13.044	ug/L	0.00
Spiked Amount	25.000	Range 45 - 110	Recovery =	52.160%		
21) 2-Butanone-d5	6.993	46	57946	154.210	ug/L	0.00
Spiked Amount	50.000	Range 20 - 135	Recovery =	308.420%#		
24) Chloroform-d	7.563	84	60575	22.567	ug/L	0.00
Spiked Amount	25.000	Range 40 - 150	Recovery =	90.280%		
26) 1,2-Dichloroethane-d4	8.228	65	43703	33.004	ug/L	0.00
Spiked Amount	25.000	Range 70 - 130	Recovery =	132.000%#		
32) Benzene-d6	8.204	84	96963	18.995	ug/L	0.00
Spiked Amount	25.000	Range 20 - 135	Recovery =	76.000%		
36) 1,2-Dichloropropane-d6	9.204	67	41880	25.703	ug/L	0.00
Spiked Amount	25.000	Range 70 - 120	Recovery =	102.800%		
41) Toluene-d8	10.269	98	80626	17.058	ug/L	0.00
Spiked Amount	25.000	Range 30 - 130	Recovery =	68.240%		
43) trans-1,3-Dichloroprop...	10.528	79	19091	28.170	ug/L	0.00
Spiked Amount	25.000	Range 30 - 135	Recovery =	112.680%		
47) 2-Hexanone-d5	10.875	63	37746	149.237	ug/L	0.00
Spiked Amount	50.000	Range 20 - 135	Recovery =	298.480%#		
56) 1,1,2,2-Tetrachloroeth...	12.651	84	59812	51.597	ug/L	0.00
Spiked Amount	25.000	Range 45 - 120	Recovery =	206.400%#		
66) 1,2-Dichlorobenzene-d4	13.810	152	25016	21.860	ug/L	0.00
Spiked Amount	25.000	Range 75 - 120	Recovery =	87.440%		
Target Compounds						
13) Acetone	4.022	43	9784	32.237	ug/L	61
22) 2-Butanone	7.081	43	3601	7.352	ug/L	84
34) Trichloroethene	8.781	95	1353	0.954	ug/L #	4
39) cis-1,3-Dichloropropene	9.975	75	1705	0.742	ug/L	99
44) trans-1,3-Dichloropropene	10.522	75	1186	0.635	ug/L	90
61) 1,2,3-Trichloropropane	12.722	75	522	0.862	ug/L #	38
68) 1,2-Dibromo-3-chloropr...	14.786	75	1197	8.865	ug/L #	1

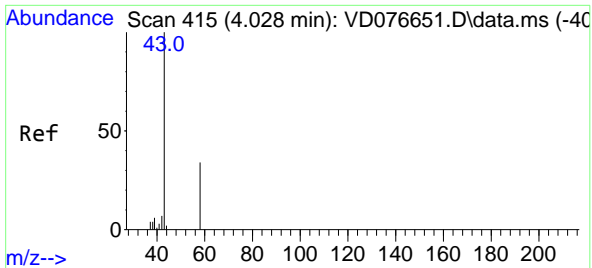
(#) = qualifier out of range (m) = manual integration (+) = signals summed

Data Path : Z:\voasrv\HPCHEM1\MSVOA\_D\Data\VD063023\  
 Data File : VD076667.D  
 Acq On : 30 Jun 2023 17:28  
 Operator : KP/SY  
 Sample : 03474-21  
 Misc : 6.59G/10.0ml/MSVOA\_D/SOIL  
 ALS Vial : 19 Sample Multiplier: 1

Instrument :  
 MSVOA\_D  
 ClientSampleId :  
 A46R2

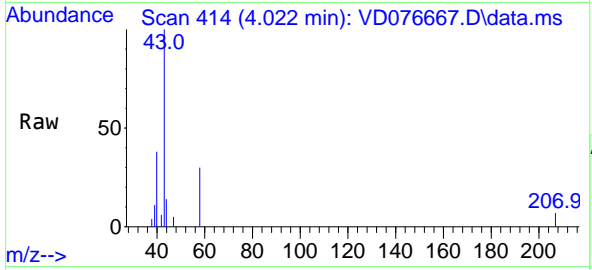
Quant Time: Jul 03 01:31:28 2023  
 Quant Method : Z:\voasrv\HPCHEM1\MSVOA\_D\Method\SFAMDLM061523SMA.M  
 Quant Title : SFAM01.0  
 QLast Update : Fri Jun 16 01:50:34 2023  
 Response via : Initial Calibration



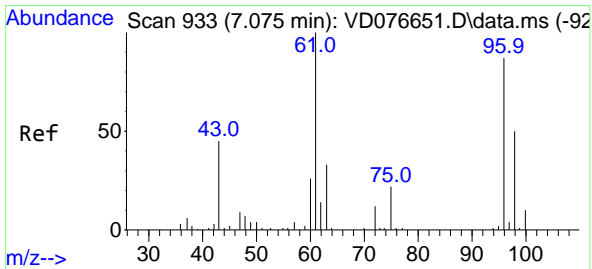
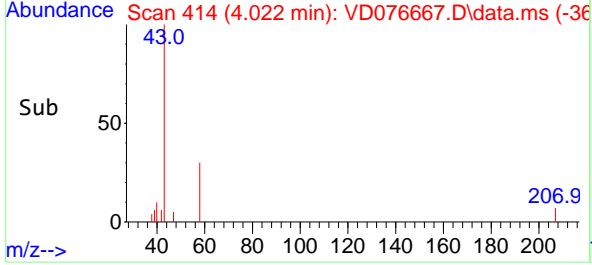
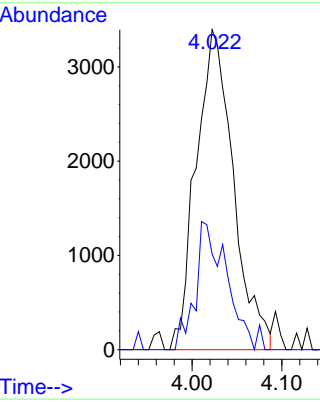


#13  
 Acetone  
 Concen: 32.237 ug/L  
 RT: 4.022 min Scan# 415  
 Delta R.T. -0.000 min  
 Lab File: VD076667.D  
 Acq: 30 Jun 2023 17:28

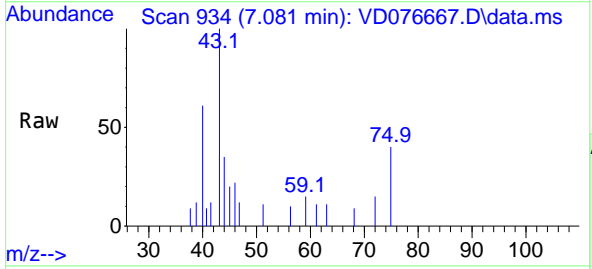
Instrument : MSVOA\_D  
 ClientSampleId : A46R2



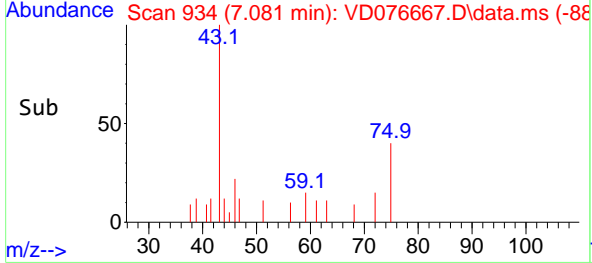
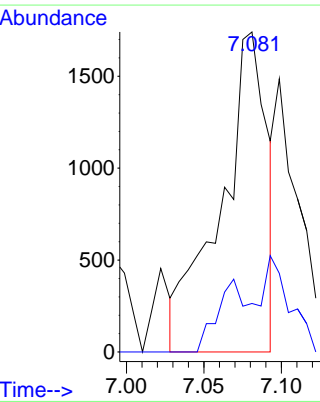
Tgt Ion: 43 Resp: 9784  
 Ion Ratio Lower Upper  
 43 100  
 58 11.5 0.0 67.4

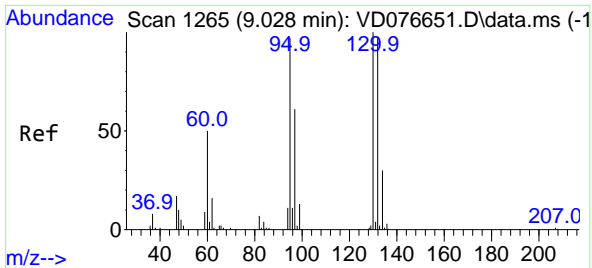


#22  
 2-Butanone  
 Concen: 7.352 ug/L  
 RT: 7.081 min Scan# 934  
 Delta R.T. -0.000 min  
 Lab File: VD076667.D  
 Acq: 30 Jun 2023 17:28



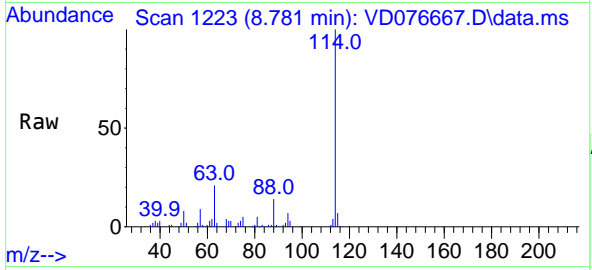
Tgt Ion: 43 Resp: 3601  
 Ion Ratio Lower Upper  
 43 100  
 72 17.6 12.9 38.7





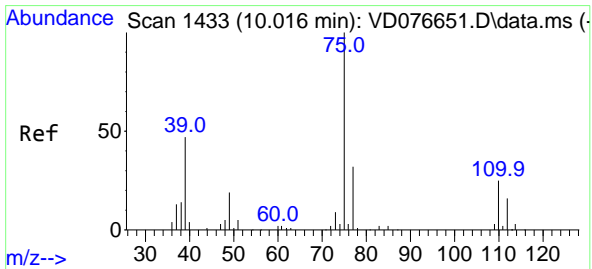
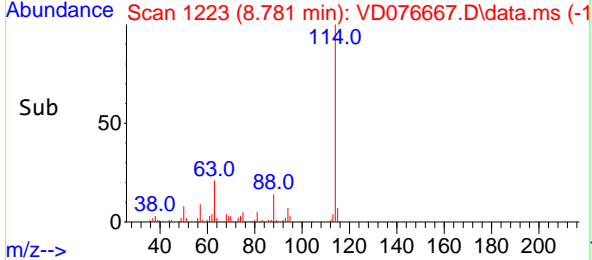
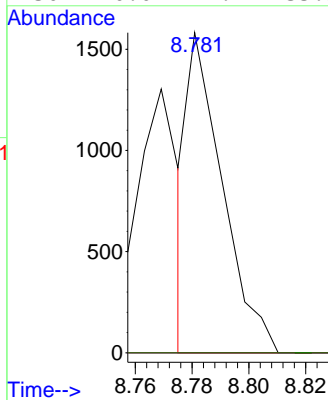
#34  
 Trichloroethene  
 Concen: 0.954 ug/L  
 RT: 8.781 min Scan# 11  
 Delta R.T. -0.247 min  
 Lab File: VD076667.D  
 Acq: 30 Jun 2023 17:28

Instrument : MSVOA\_D  
 ClientSampleId : A46R2



Tgt Ion: 95 Resp: 1353

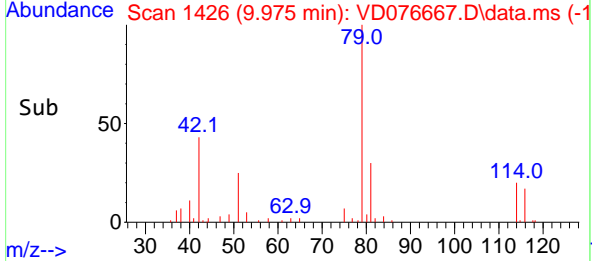
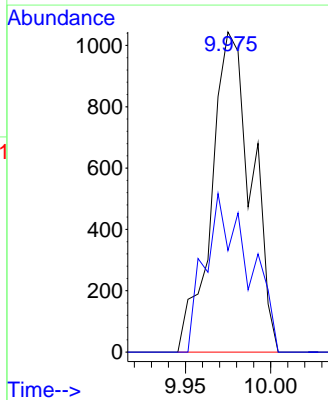
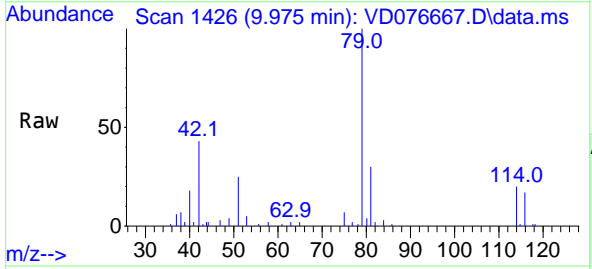
Ion	Ratio	Lower	Upper
95	100		
97	0.0	43.1	80.1#
132	0.0	71.8	133.4#
130	0.0	71.9	133.5#

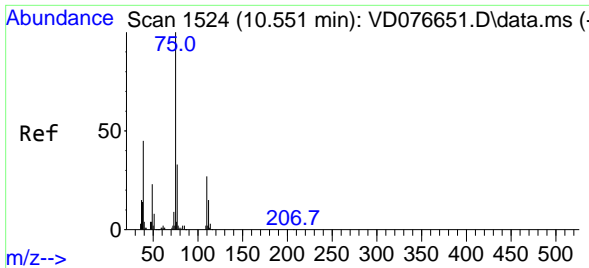


#39  
 cis-1,3-Dichloropropene  
 Concen: 0.742 ug/L  
 RT: 9.975 min Scan# 1426  
 Delta R.T. -0.041 min  
 Lab File: VD076667.D  
 Acq: 30 Jun 2023 17:28

Tgt Ion: 75 Resp: 1705

Ion	Ratio	Lower	Upper
75	100		
77	31.7	22.7	42.3

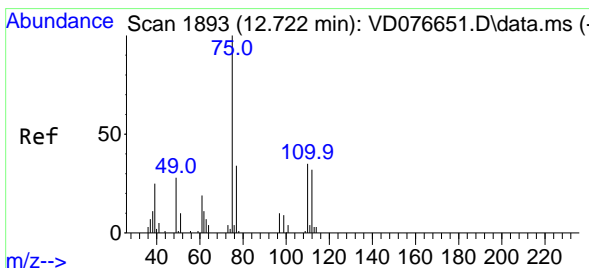
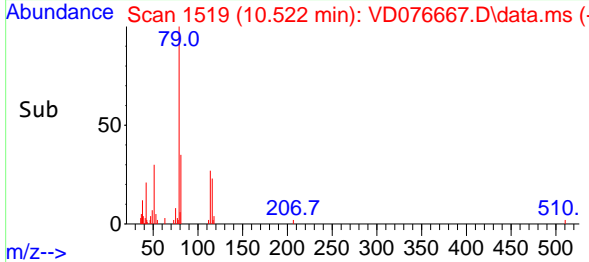
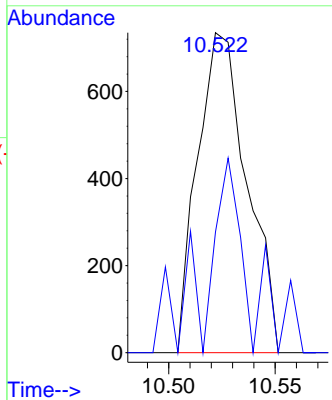
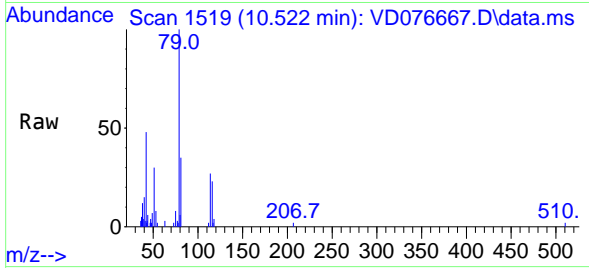




#44  
 trans-1,3-Dichloropropene  
 Concen: 0.635 ug/L  
 RT: 10.522 min Scan# 1186  
 Delta R.T. -0.030 min  
 Lab File: VD076667.D  
 Acq: 30 Jun 2023 17:28

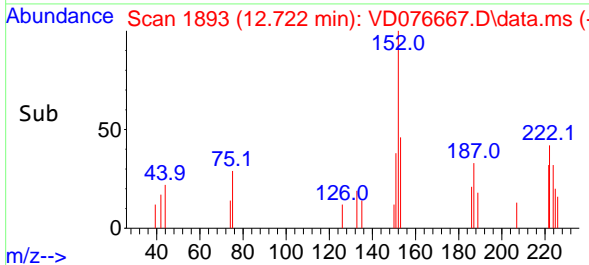
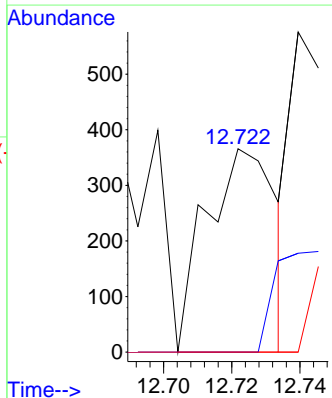
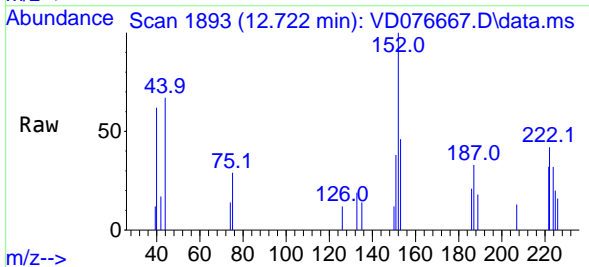
Instrument : MSVOA\_D  
 ClientSampleId : A46R2

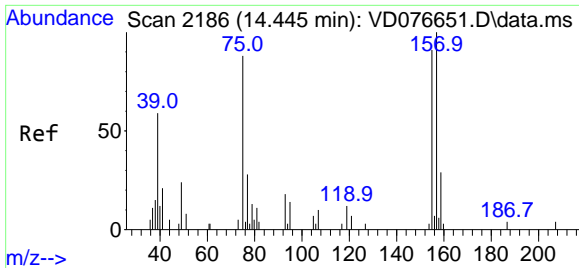
Tgt Ion: 75 Resp: 1186  
 Ion Ratio Lower Upper  
 75 100  
 77 37.7 22.5 41.7



#61  
 1,2,3-Trichloropropane  
 Concen: 0.862 ug/L  
 RT: 12.722 min Scan# 1893  
 Delta R.T. -0.006 min  
 Lab File: VD076667.D  
 Acq: 30 Jun 2023 17:28

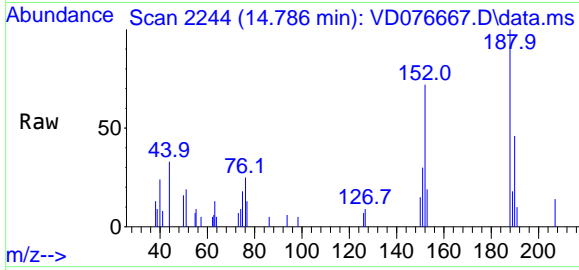
Tgt Ion: 75 Resp: 522  
 Ion Ratio Lower Upper  
 75 100  
 77 0.0 27.2 40.8#  
 110 0.0 31.8 47.6#





#68  
 1,2-Dibromo-3-chloropropane  
 Concen: 8.865 ug/L  
 RT: 14.786 min Scan# 21  
 Delta R.T. 0.341 min  
 Lab File: VD076667.D  
 Acq: 30 Jun 2023 17:28

Instrument :  
 MSVOA\_D  
 ClientSampleId :  
 A46R2



Tgt Ion: 75 Resp: 1197

Ion	Ratio	Lower	Upper
75	100		
155	0.0	76.2	114.4#
157	0.0	89.4	134.2#

