

Data Path : Z:\voasrv\HPCHEM1\MSVOA_D\Data\VD070323\
 Data File : VD076689.D
 Acq On : 03 Jul 2023 13:49
 Operator : KP/SY
 Sample : 03472-22RE
 Misc : 4.69G/10.0ml/MSVOA_D/SOIL
 ALS Vial : 10 Sample Multiplier: 1

Instrument :
 MSVOA_D
 ClientSampleId :
 A46R3RE

Quant Time: Jul 04 01:10:26 2023
 Quant Method : Z:\voasrv\HPCHEM1\MSVOA_D\Method\SFAMDLM061523SMA.M
 Quant Title : SFAM01.0
 QLast Update : Fri Jun 16 01:50:34 2023
 Response via : Initial Calibration

Compound	R.T.	QIon	Response	Conc	Units	Dev(Min)

Internal Standards						
1) 1,4-Difluorobenzene	8.775	114	152359	25.000	ug/L	0.00
28) Chlorobenzene-d5	11.581	117	115030	25.000	ug/L	0.00
58) 1,4-Dichlorobenzene-d4	13.516	152	39198	25.000	ug/L	0.00

System Monitoring Compounds						
4) Vinyl Chloride-d3	2.269	65	24195	6.521	ug/L	0.00
Spiked Amount	25.000	Range 30 - 150	Recovery =	26.080%#		
7) Chloroethane-d5	2.799	69	28157	9.385	ug/L	0.00
Spiked Amount	25.000	Range 30 - 150	Recovery =	37.560%		
11) 1,1-Dichloroethene-d2	3.911	65	8503	8.779	ug/L	0.00
Spiked Amount	25.000	Range 45 - 110	Recovery =	35.120%#		
21) 2-Butanone-d5	6.993	46	46833	83.343	ug/L	0.00
Spiked Amount	50.000	Range 20 - 135	Recovery =	166.680%#		
24) Chloroform-d	7.569	84	70177	17.483	ug/L	0.00
Spiked Amount	25.000	Range 40 - 150	Recovery =	69.920%		
26) 1,2-Dichloroethane-d4	8.228	65	42789	21.608	ug/L	0.00
Spiked Amount	25.000	Range 70 - 130	Recovery =	86.440%		
32) Benzene-d6	8.199	84	101170	14.378	ug/L	0.00
Spiked Amount	25.000	Range 20 - 135	Recovery =	57.520%		
36) 1,2-Dichloropropane-d6	9.204	67	42876	19.089	ug/L	0.00
Spiked Amount	25.000	Range 70 - 120	Recovery =	76.360%		
41) Toluene-d8	10.269	98	75777	11.630	ug/L	0.00
Spiked Amount	25.000	Range 30 - 130	Recovery =	46.520%		
43) trans-1,3-Dichloroprop...	10.528	79	18423	19.720	ug/L	0.00
Spiked Amount	25.000	Range 30 - 135	Recovery =	78.880%		
47) 2-Hexanone-d5	10.875	63	30987	88.876	ug/L	0.00
Spiked Amount	50.000	Range 20 - 135	Recovery =	177.760%#		
56) 1,1,2,2-Tetrachloroeth...	12.651	84	50762	31.767	ug/L	0.00
Spiked Amount	25.000	Range 45 - 120	Recovery =	127.080%#		
66) 1,2-Dichlorobenzene-d4	13.816	152	23637	16.451	ug/L	0.00
Spiked Amount	25.000	Range 75 - 120	Recovery =	65.800%#		

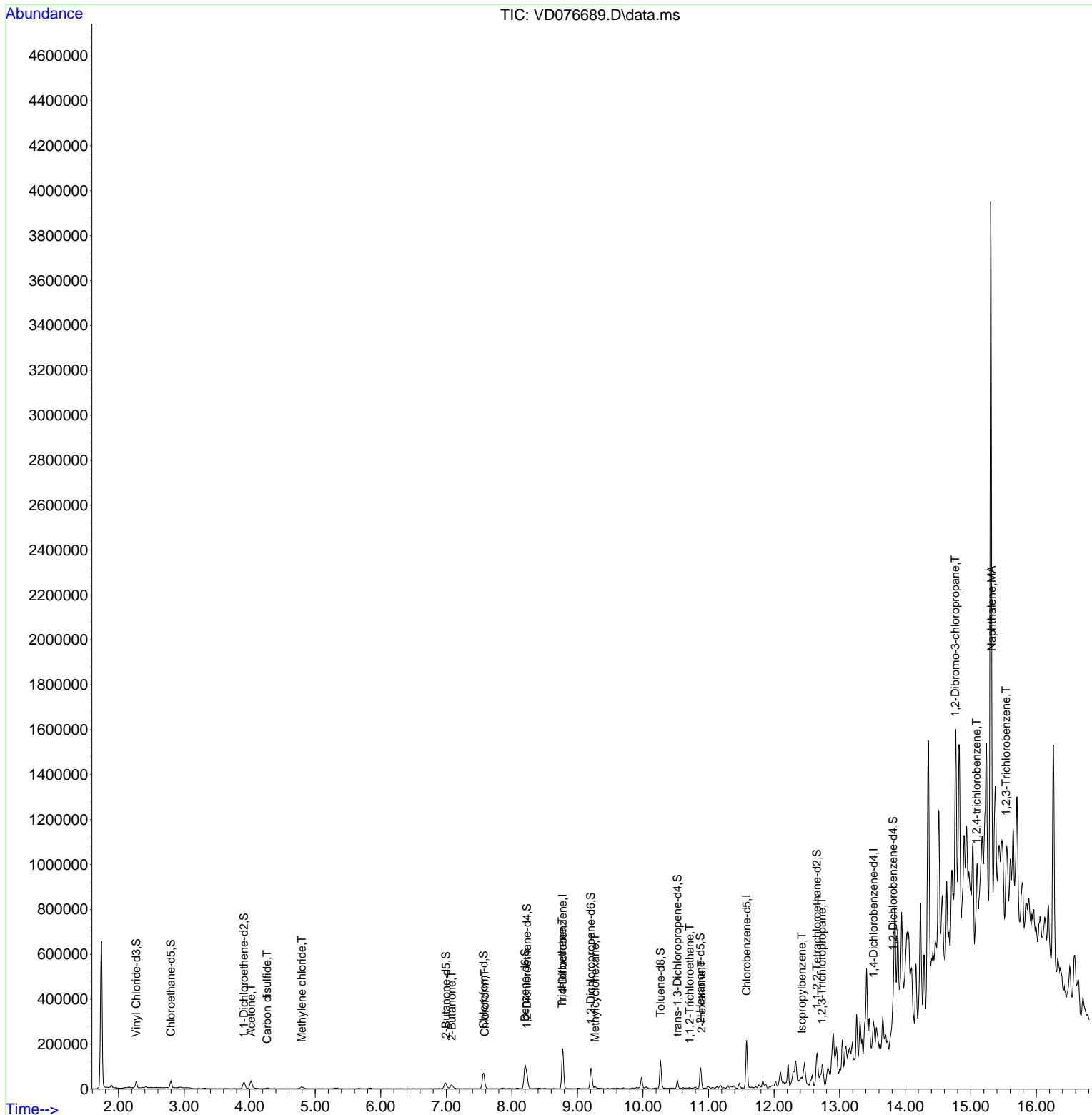
Target Compounds					Qvalue
13) Acetone	4.022	43	59166	130.360	ug/L 96
14) Carbon disulfide	4.263	76	5943	0.829	ug/L 98
16) Methylene chloride	4.793	84	4754	1.795	ug/L # 62
22) 2-Butanone	7.081	43	26343	35.966	ug/L 100
25) Chloroform	7.587	83	1291	0.328	ug/L 86
34) Trichloroethene	8.769	95	4545	2.324	ug/L # 4
35) Methylcyclohexane	9.269	83	2873	0.911	ug/L 89
45) 1,1,2-Trichloroethane	10.710	97	1299	0.912	ug/L # 16
48) 2-Hexanone	10.893	43	2684	3.035	ug/L # 48
60) Isopropylbenzene	12.422	105	2788	0.465	ug/L # 81
61) 1,2,3-Trichloropropane	12.728	75	290	0.381	ug/L # 51
68) 1,2-Dibromo-3-chloropr...	14.763	75	1177	6.943	ug/L # 4
70) 1,2,4-trichlorobenzene	15.086	180	1139	0.720	ug/L # 1
71) Naphthalene	15.322	128	1604	0.529	ug/L # 74
72) 1,2,3-Trichlorobenzene	15.539	180	5889	4.284	ug/L # 1

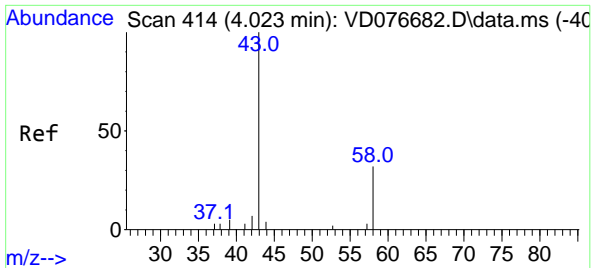
(#) = qualifier out of range (m) = manual integration (+) = signals summed

Data Path : Z:\voasrv\HPCHEM1\MSVOA_D\Data\VD070323\
 Data File : VD076689.D
 Acq On : 03 Jul 2023 13:49
 Operator : KP/SY
 Sample : 03472-22RE
 Misc : 4.69G/10.0ml/MSVOA_D/SOIL
 ALS Vial : 10 Sample Multiplier: 1

Instrument :
 MSVOA_D
 ClientSampleId :
 A46R3RE

Quant Time: Jul 04 01:10:26 2023
 Quant Method : Z:\voasrv\HPCHEM1\MSVOA_D\Method\SFAMDLM061523SMA.M
 Quant Title : SFAM01.0
 QLast Update : Fri Jun 16 01:50:34 2023
 Response via : Initial Calibration

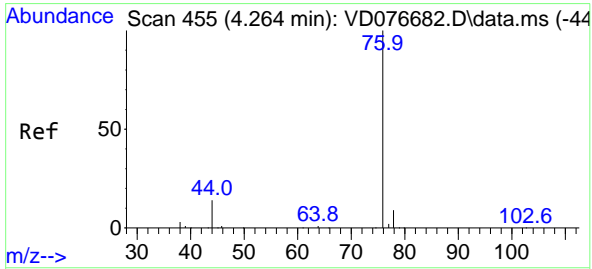
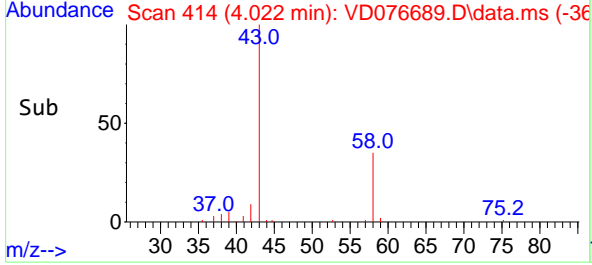
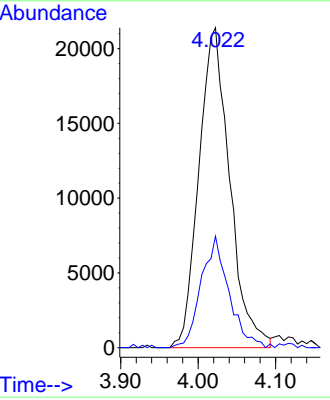
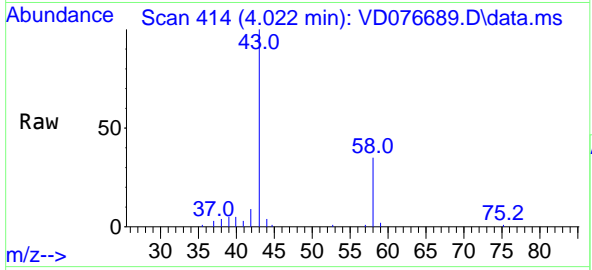




#13
 Acetone
 Concen: 130.360 ug/L
 RT: 4.022 min Scan# 414
 Delta R.T. -0.000 min
 Lab File: VD076689.D
 Acq: 03 Jul 2023 13:49

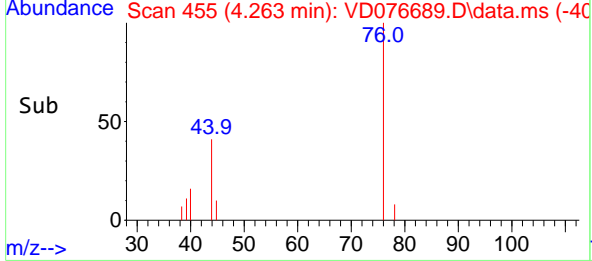
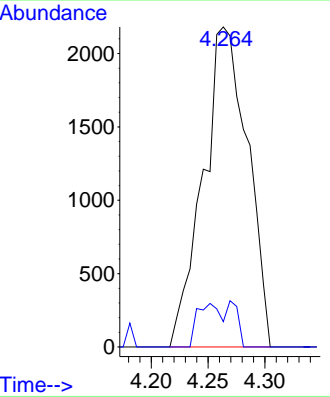
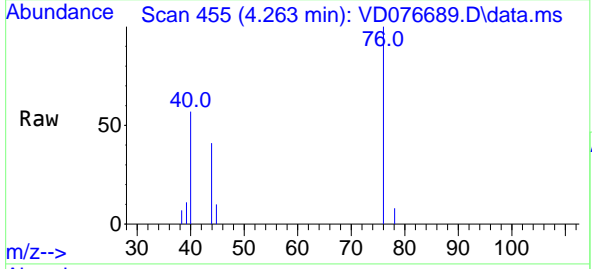
Instrument : MSVOA_D
 ClientSampleId : A46R3RE

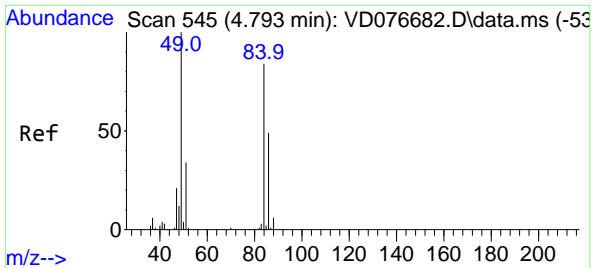
Tgt Ion: 43 Resp: 59166
 Ion Ratio Lower Upper
 43 100
 58 31.1 0.0 67.4



#14
 Carbon disulfide
 Concen: 0.829 ug/L
 RT: 4.263 min Scan# 455
 Delta R.T. -0.000 min
 Lab File: VD076689.D
 Acq: 03 Jul 2023 13:49

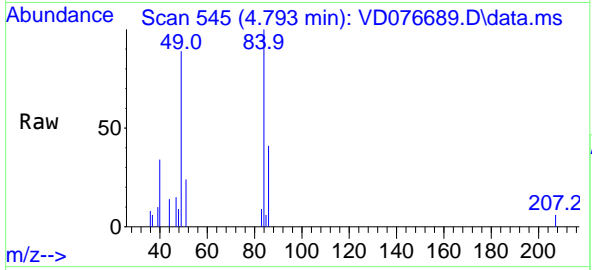
Tgt Ion: 76 Resp: 5943
 Ion Ratio Lower Upper
 76 100
 78 7.9 7.0 10.4





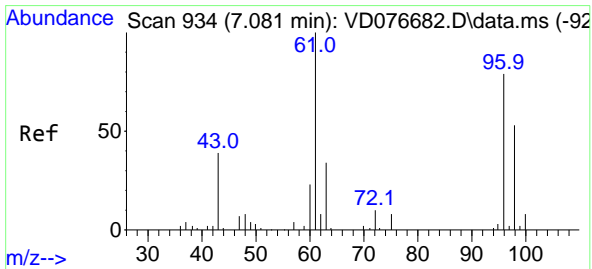
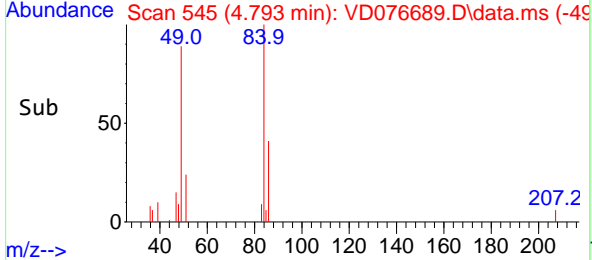
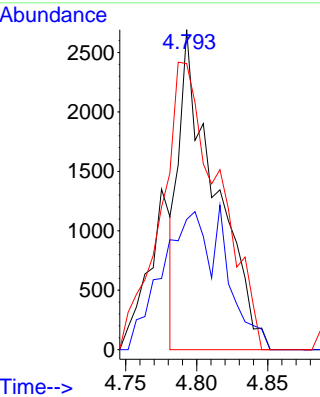
#16
 Methylene chloride
 Concen: 1.795 ug/L
 RT: 4.793 min Scan# 545
 Delta R.T. 0.006 min
 Lab File: VD076689.D
 Acq: 03 Jul 2023 13:49

Instrument : MSVOA_D
 ClientSampleId : A46R3RE



Tgt Ion: 84 Resp: 4754

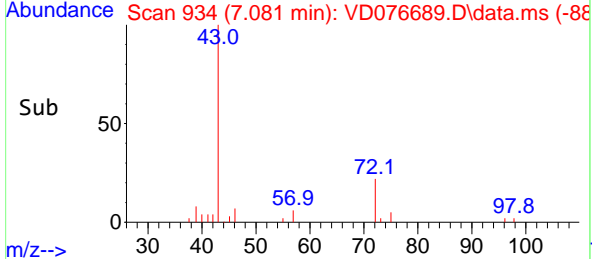
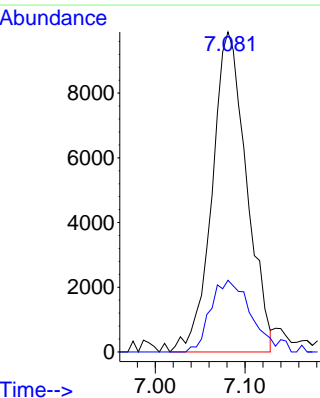
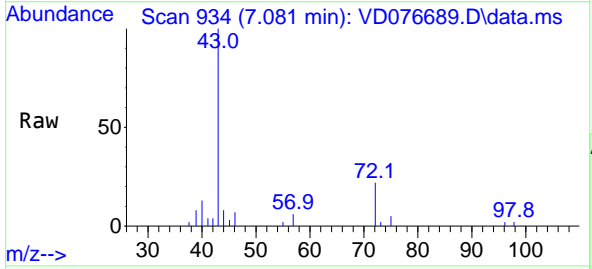
Ion	Ratio	Lower	Upper
84	100		
86	40.7	45.1	83.9#
49	89.4	97.2	180.6#

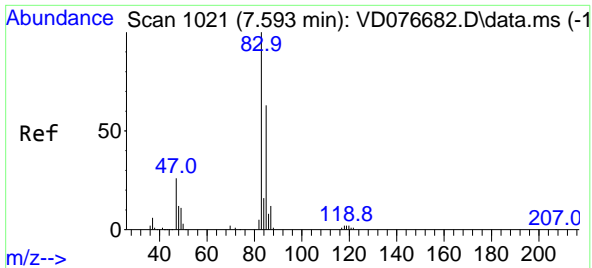


#22
 2-Butanone
 Concen: 35.966 ug/L
 RT: 7.081 min Scan# 934
 Delta R.T. -0.000 min
 Lab File: VD076689.D
 Acq: 03 Jul 2023 13:49

Tgt Ion: 43 Resp: 26343

Ion	Ratio	Lower	Upper
43	100		
72	25.8	12.9	38.7

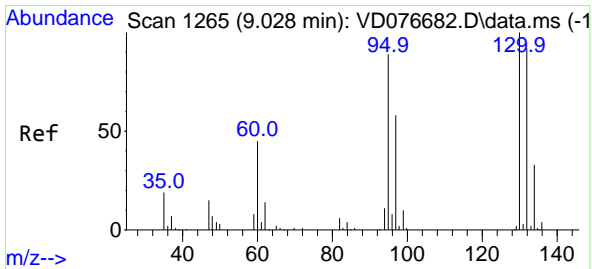
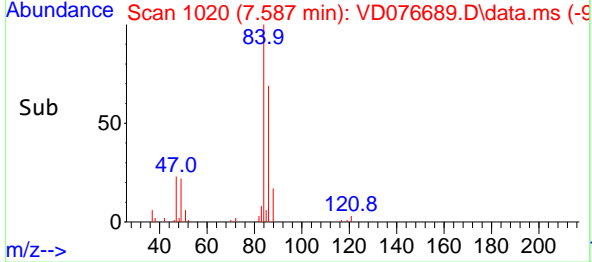
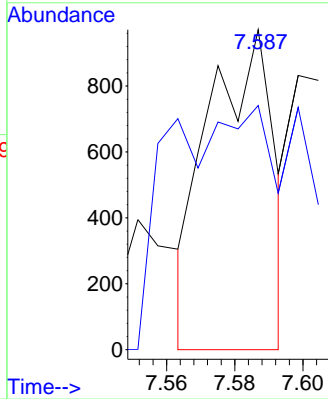
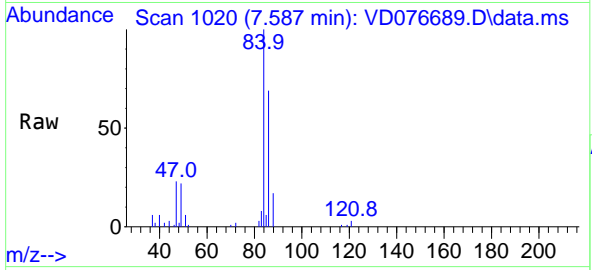




#25
 Chloroform
 Concen: 0.328 ug/L
 RT: 7.587 min Scan# 1020
 Delta R.T. -0.006 min
 Lab File: VD076689.D
 Acq: 03 Jul 2023 13:49

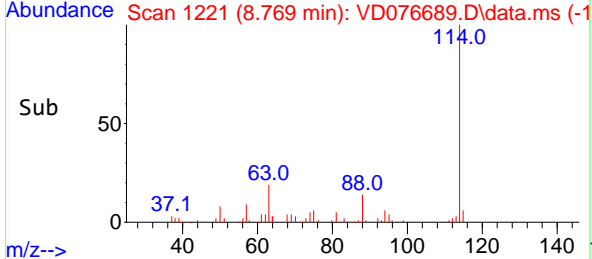
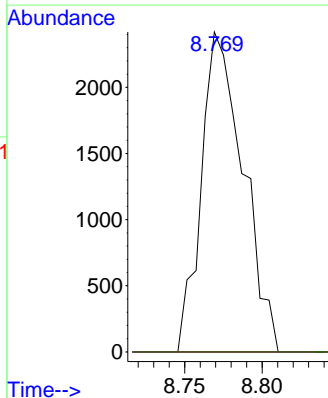
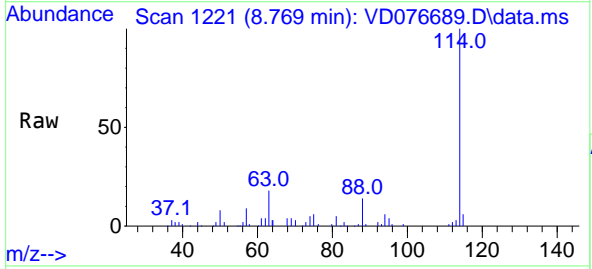
Instrument : MSVOA_D
 ClientSampleId : A46R3RE

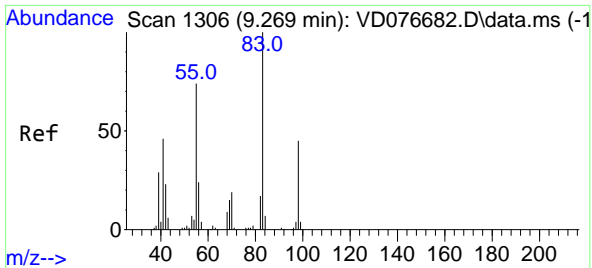
Tgt Ion: 83 Resp: 1291
 Ion Ratio Lower Upper
 83 100
 85 76.3 45.4 84.4



#34
 Trichloroethene
 Concen: 2.324 ug/L
 RT: 8.769 min Scan# 1221
 Delta R.T. -0.259 min
 Lab File: VD076689.D
 Acq: 03 Jul 2023 13:49

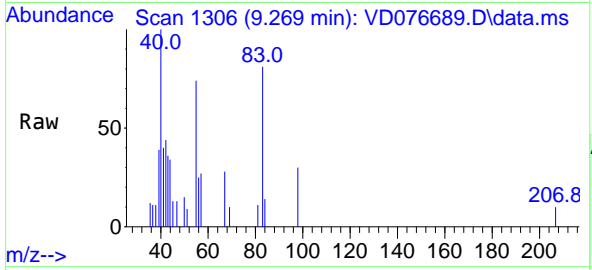
Tgt Ion: 95 Resp: 4545
 Ion Ratio Lower Upper
 95 100
 97 0.0 43.1 80.1#
 132 0.0 71.8 133.4#
 130 0.0 71.9 133.5#





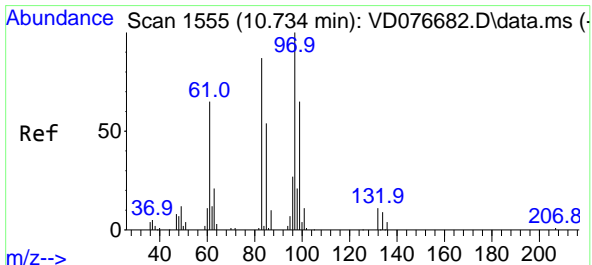
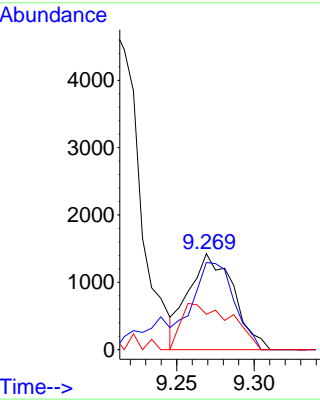
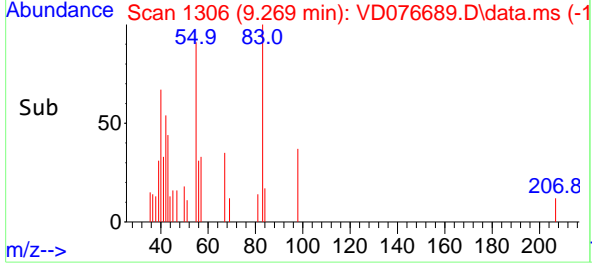
#35
 Methylcyclohexane
 Concen: 0.911 ug/L
 RT: 9.269 min Scan# 111
 Delta R.T. -0.000 min
 Lab File: VD076689.D
 Acq: 03 Jul 2023 13:49

Instrument : MSVOA_D
 ClientSampleId : A46R3RE

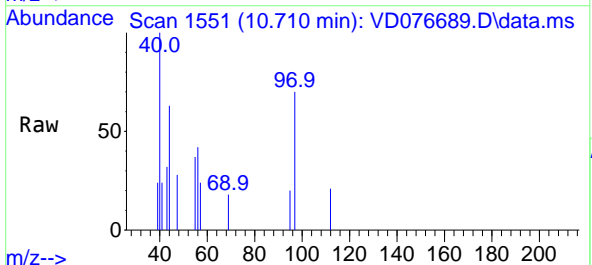


Tgt Ion: 83 Resp: 2873

Ion	Ratio	Lower	Upper
83	100		
55	85.6	59.8	89.6
98	52.6	37.8	56.6

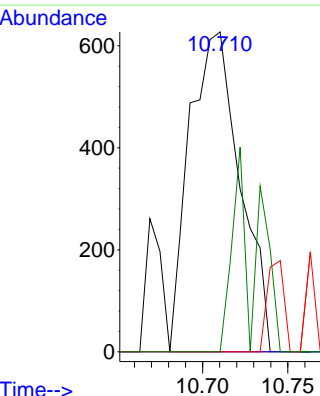
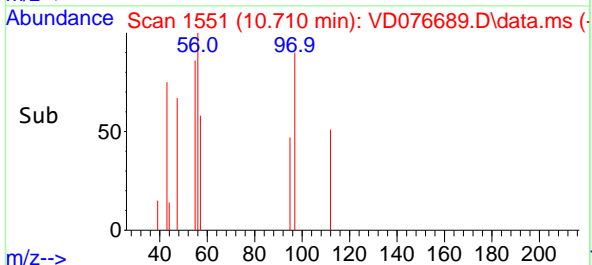


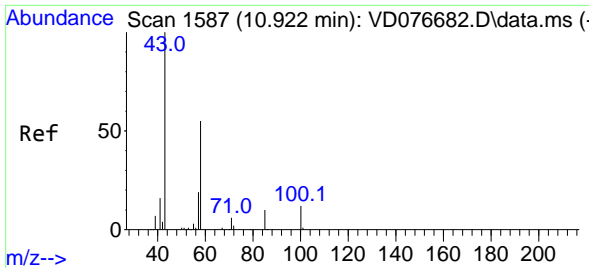
#45
 1,1,2-Trichloroethane
 Concen: 0.912 ug/L
 RT: 10.710 min Scan# 1551
 Delta R.T. -0.024 min
 Lab File: VD076689.D
 Acq: 03 Jul 2023 13:49



Tgt Ion: 97 Resp: 1299

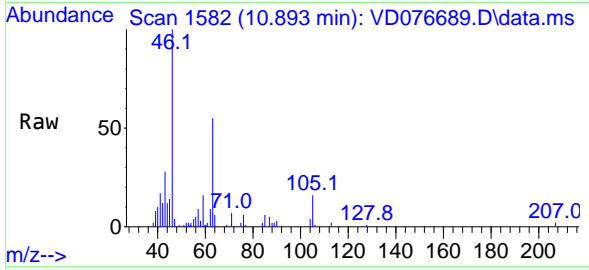
Ion	Ratio	Lower	Upper
97	100		
99	0.0	41.9	77.9#
83	0.0	59.2	110.0#
85	0.0	39.8	73.8#



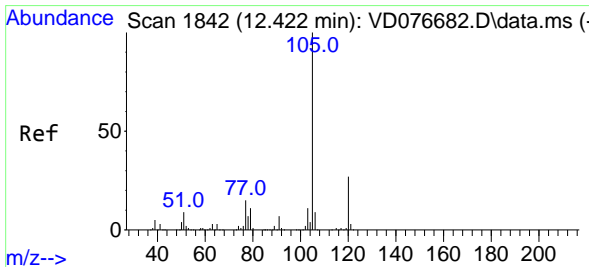
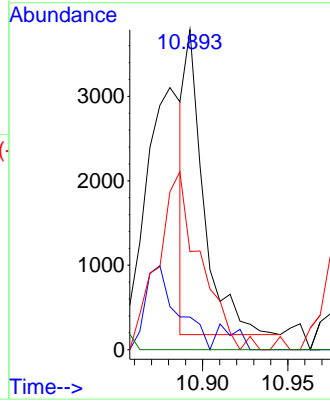
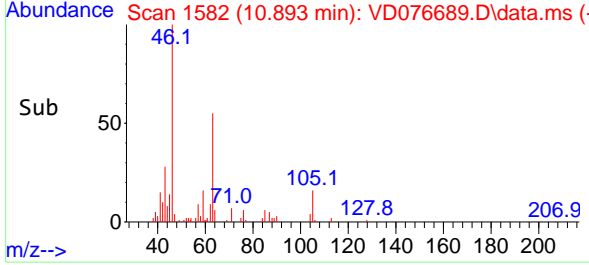


#48
 2-Hexanone
 Concen: 3.035 ug/L
 RT: 10.893 min Scan# 11
 Delta R.T. -0.030 min
 Lab File: VD076689.D
 Acq: 03 Jul 2023 13:49

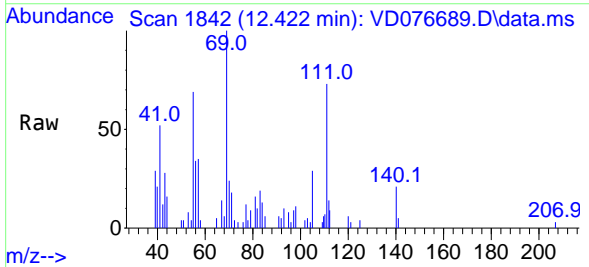
Instrument : MSVOA_D
 ClientSampleId : A46R3RE



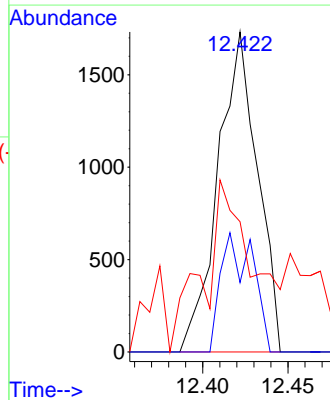
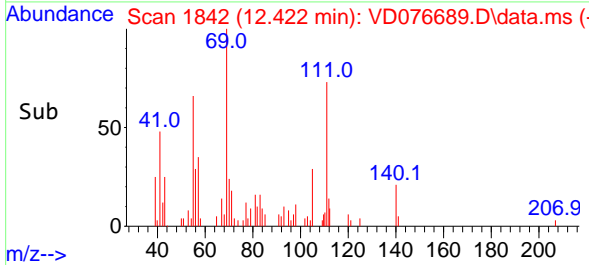
Tgt Ion: 43 Resp: 2684
 Ion Ratio Lower Upper
 43 100
 58 9.4 42.9 64.3#
 57 2.0 13.7 20.5#
 100 0.0 9.4 14.0#

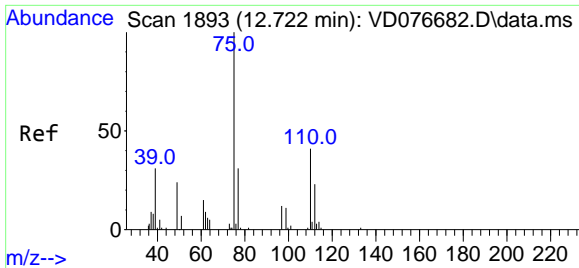


#60
 Isopropylbenzene
 Concen: 0.465 ug/L
 RT: 12.422 min Scan# 1842
 Delta R.T. -0.000 min
 Lab File: VD076689.D
 Acq: 03 Jul 2023 13:49



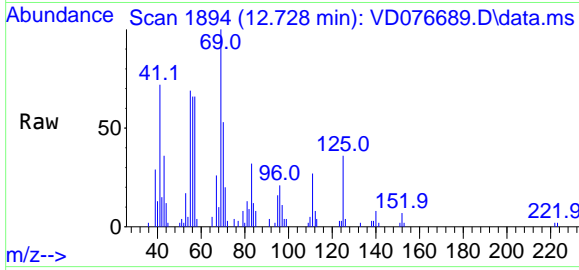
Tgt Ion: 105 Resp: 2788
 Ion Ratio Lower Upper
 105 100
 120 18.3 21.3 31.9#
 77 24.9 12.2 18.4#





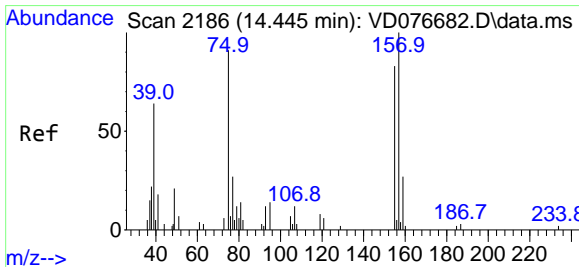
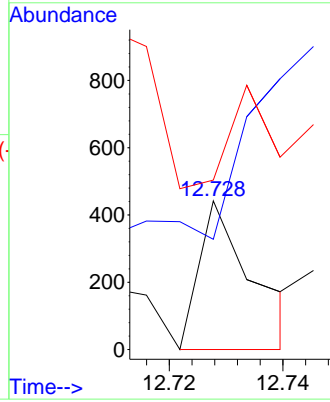
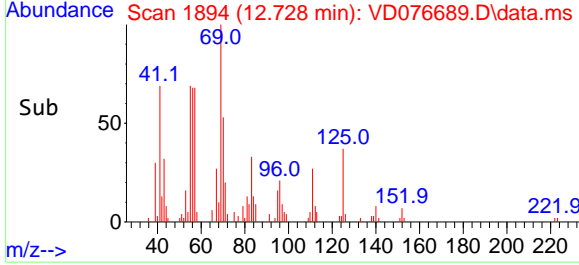
#61
 1,2,3-Trichloropropane
 Concen: 0.381 ug/L
 RT: 12.728 min Scan# 11
 Delta R.T. -0.000 min
 Lab File: VD076689.D
 Acq: 03 Jul 2023 13:49

Instrument : MSVOA_D
 ClientSampleId : A46R3RE

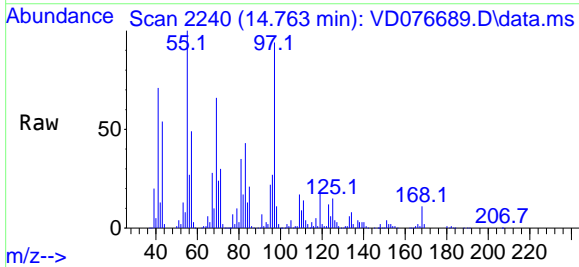


Tgt Ion: 75 Resp: 290

Ion	Ratio	Lower	Upper
75	100		
77	0.0	27.2	40.8#
110	64.1	31.8	47.6#

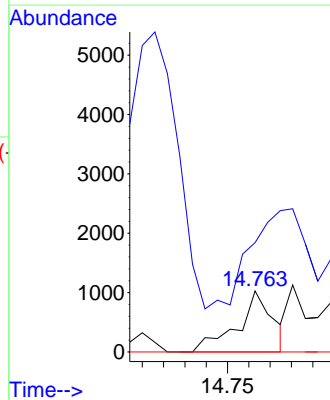
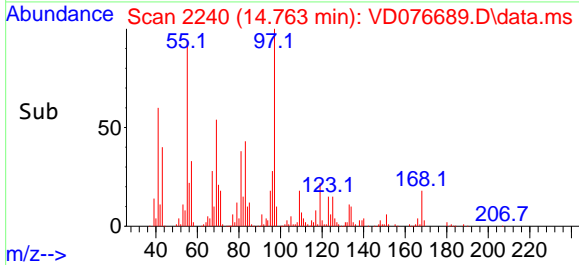


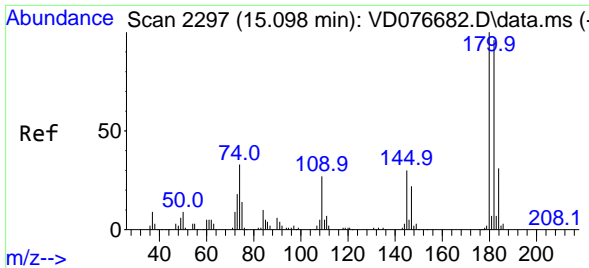
#68
 1,2-Dibromo-3-chloropropane
 Concen: 6.943 ug/L
 RT: 14.763 min Scan# 2240
 Delta R.T. 0.318 min
 Lab File: VD076689.D
 Acq: 03 Jul 2023 13:49



Tgt Ion: 75 Resp: 1177

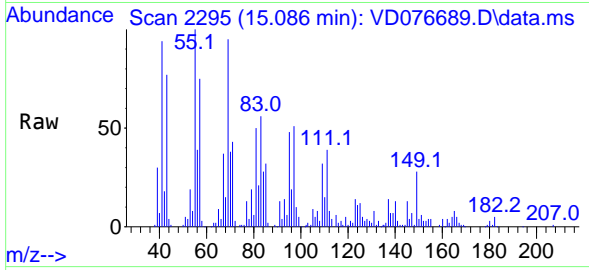
Ion	Ratio	Lower	Upper
75	100		
155	179.0	76.2	114.4#
157	0.0	89.4	134.2#



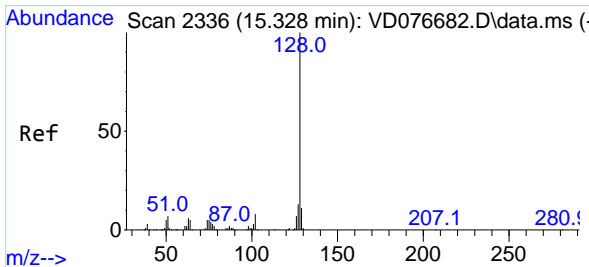
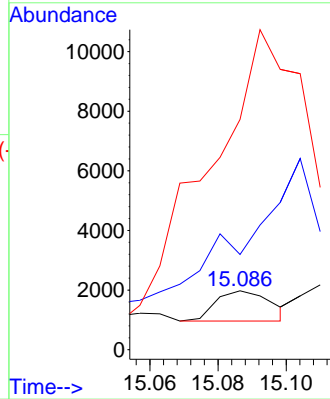
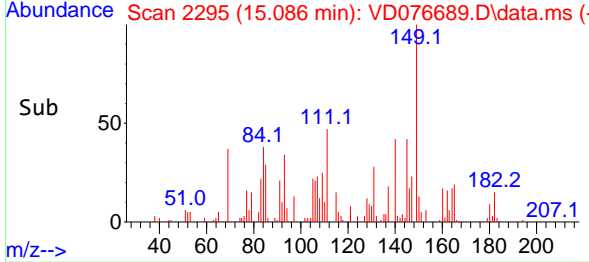


#70
 1,2,4-trichlorobenzene
 Concen: 0.720 ug/L
 RT: 15.086 min Scan# 211
 Delta R.T. -0.012 min
 Lab File: VD076689.D
 Acq: 03 Jul 2023 13:49

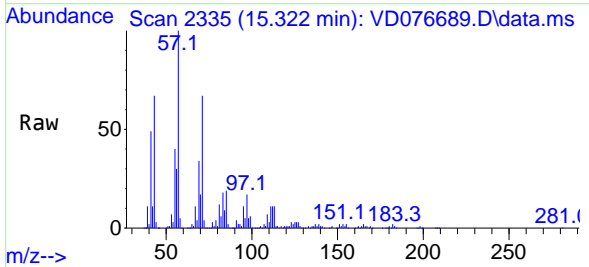
Instrument : MSVOA_D
 ClientSampleId : A46R3RE



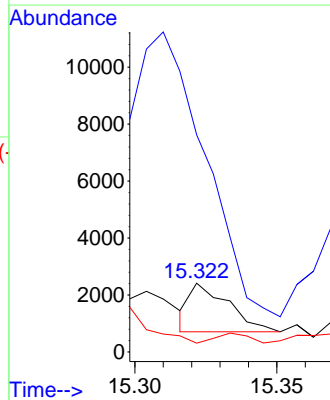
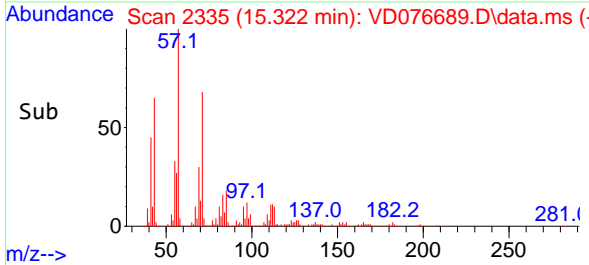
Tgt Ion:180 Resp: 1139
 Ion Ratio Lower Upper
 180 100
 182 0.0 76.9 115.3#
 145 1993.7 23.5 35.3#

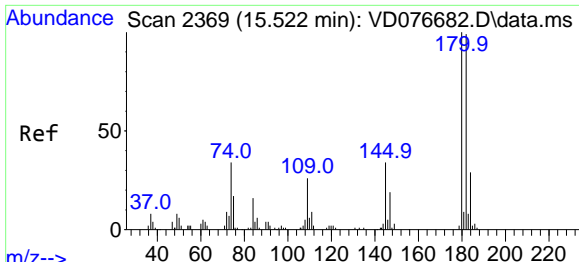


#71
 Naphthalene
 Concen: 0.529 ug/L
 RT: 15.322 min Scan# 2335
 Delta R.T. -0.012 min
 Lab File: VD076689.D
 Acq: 03 Jul 2023 13:49



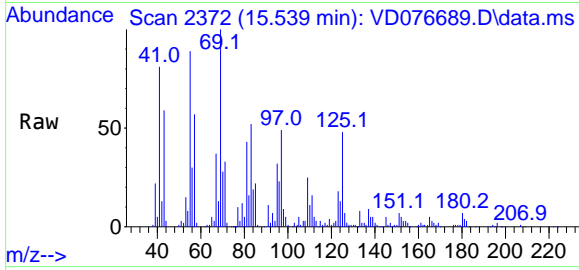
Tgt Ion:128 Resp: 1604
 Ion Ratio Lower Upper
 128 100
 127 0.0 10.8 16.2#
 129 17.1 8.6 12.8#





#72
 1,2,3-Trichlorobenzene
 Concen: 4.284 ug/L
 RT: 15.539 min Scan# 21
 Delta R.T. 0.018 min
 Lab File: VD076689.D
 Acq: 03 Jul 2023 13:49

Instrument :
 MSVOA_D
 ClientSampleId :
 A46R3RE



Tgt Ion:180 Resp: 5889

Ion	Ratio	Lower	Upper
180	100		
182	3.4	74.3	111.5#
145	165.6	25.0	37.6#

