

Data Path : Z:\voasrv\HPCHEM1\MSVOA_D\Data\VD071223\
 Data File : VD076723.D
 Acq On : 12 Jul 2023 10:18
 Operator : KP/SY
 Sample : VD0712SBL01
 Misc : 5.00G/5.0ml/MSVOA_D/SOIL
 ALS Vial : 4 Sample Multiplier: 1

Instrument :
 MSVOA_D
 ClientSampleId :
 VD0712SBL01

Integration Parameters: RTEINT.P

Integrator: RTE
 Smoothing : ON Filtering: 5
 Sampling : 1 Min Area: 3 % of largest Peak
 Start Thrs: 0.2 Max Peaks: 100
 Stop Thrs : 0 Peak Location: TOP

If leading or trailing edge < 100 prefer < Baseline drop else tangent >
 Peak separation: 5

Method : Z:\voasrv\HPCHEM1\MSVOA_D\Method\82D061623S.M
 Title : SW846 8260

Signal : TIC: VD076723.D\data.ms

peak #	R.T. min	first scan	max scan	last scan	PK TY	peak height	corr. area	corr. % max.	% of total
1	1.740	12	26	37	rBV	542607	1064973	100.00%	17.545%
2	4.793	536	545	556	rVB4	19614	55899	5.25%	0.921%
3	7.075	920	933	943	rBV2	20971	63300	5.94%	1.043%
4	7.805	1047	1057	1062	rBV2	120759	295723	27.77%	4.872%
5	7.875	1062	1069	1080	rVB	227229	530903	49.85%	8.747%
6	8.228	1115	1129	1138	rBV2	107322	256147	24.05%	4.220%
7	8.775	1214	1222	1236	rBV	372650	738515	69.35%	12.167%
8	10.269	1468	1476	1484	rBV	463776	815336	76.56%	13.433%
9	10.663	1538	1543	1550	rVB2	17105	30732	2.89%	0.506%
10	11.034	1601	1606	1613	rVB3	7606	13581	1.28%	0.224%
11	11.581	1691	1699	1712	rBV	509560	859194	80.68%	14.155%
12	12.575	1861	1868	1877	rBV	318254	515835	48.44%	8.498%
13	13.516	2021	2028	2035	rBV	476812	776555	72.92%	12.794%
14	14.045	2113	2118	2124	rBV2	15275	25457	2.39%	0.419%
15	15.481	2353	2362	2367	rBV	14818	27716	2.60%	0.457%

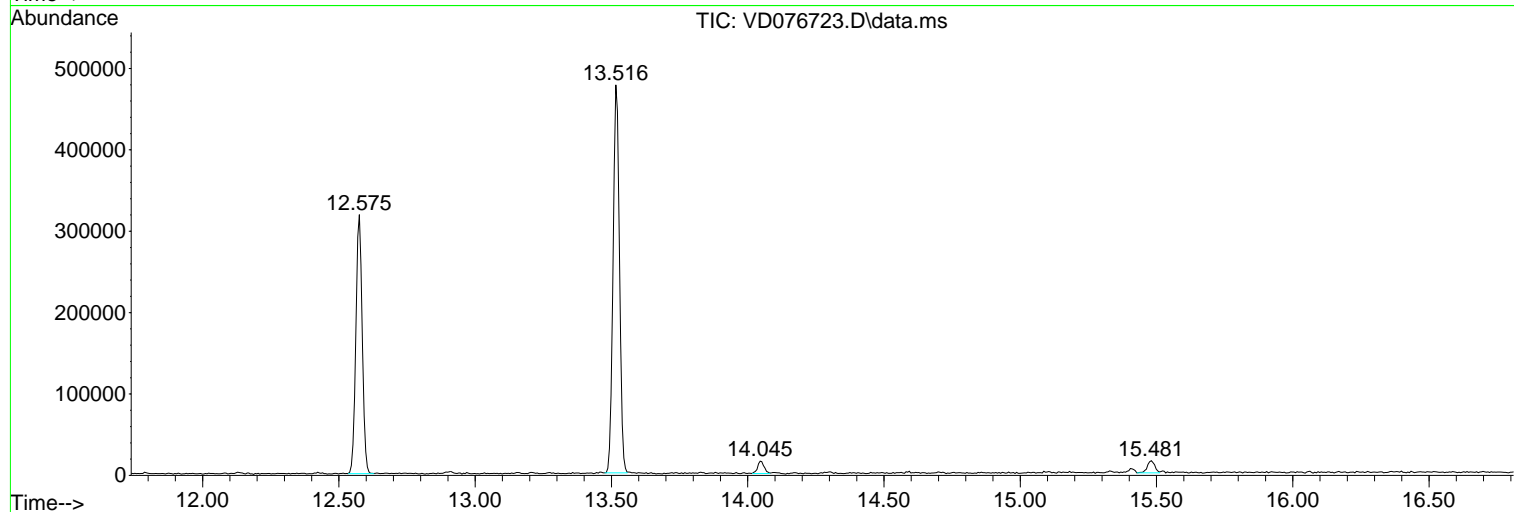
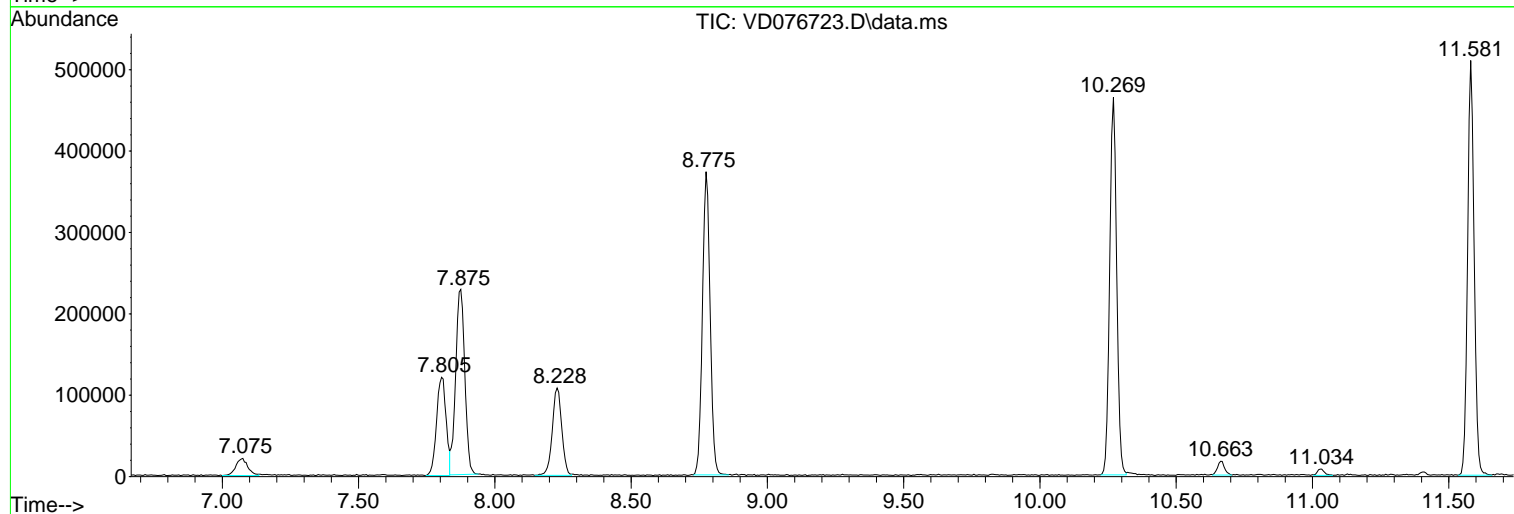
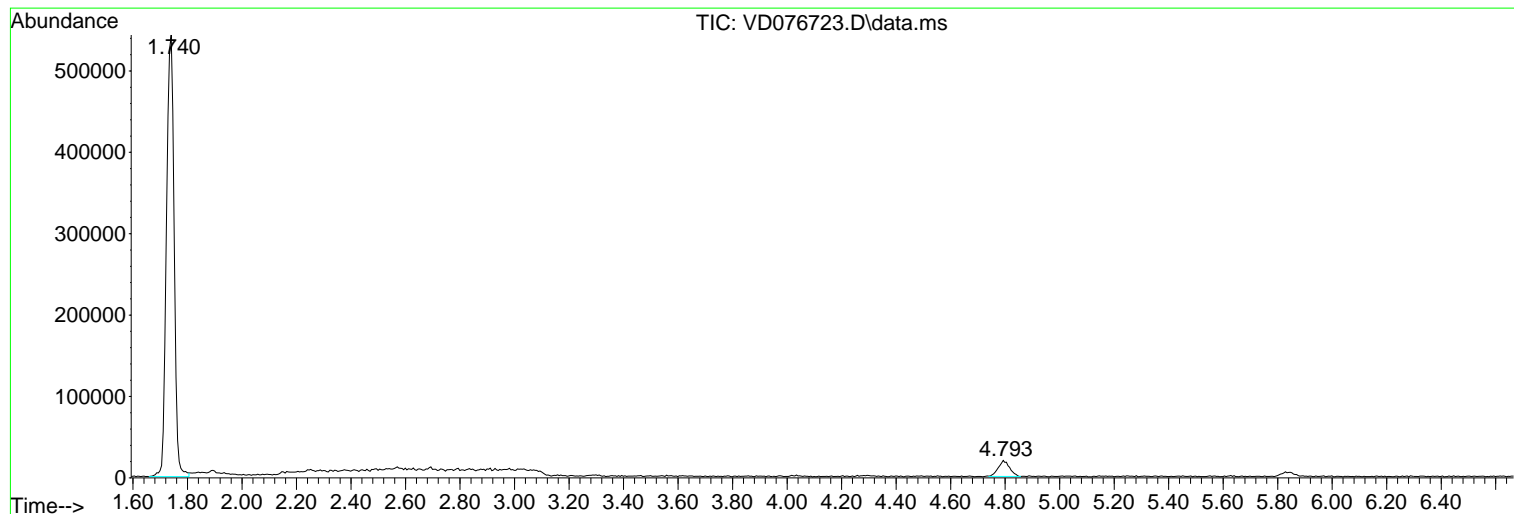
Sum of corrected areas: 6069866

Data Path : Z:\voasrv\HPCHEM1\MSVOA_D\Data\VD071223\
Data File : VD076723.D
Acq On : 12 Jul 2023 10:18
Operator : KP/SY
Sample : VD0712SBL01
Misc : 5.00G/5.0ml/MSVOA_D/SOIL
ALS Vial : 4 Sample Multiplier: 1

Instrument :
MSVOA_D
ClientSampleId :
VD0712SBL01

Quant Method : Z:\voasrv\HPCHEM1\MSVOA_D\Method\82D061623S.M
Quant Title : SW846 8260

TIC Library : C:\Database\NIST20.L
TIC Integration Parameters: LSCINT.P



Data Path : Z:\voasrv\HPCHEM1\MSVOA_D\Data\VD071223\
 Data File : VD076723.D
 Acq On : 12 Jul 2023 10:18
 Operator : KP/SY
 Sample : VD0712SBL01
 Misc : 5.00G/5.0ml/MSVOA_D/SOIL
 ALS Vial : 4 Sample Multiplier: 1

Instrument :
 MSVOA_D
 ClientSampleId :
 VD0712SBL01

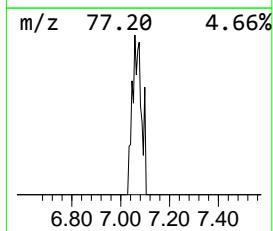
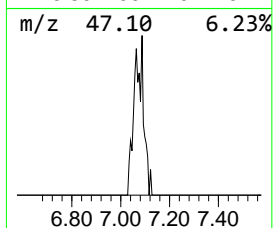
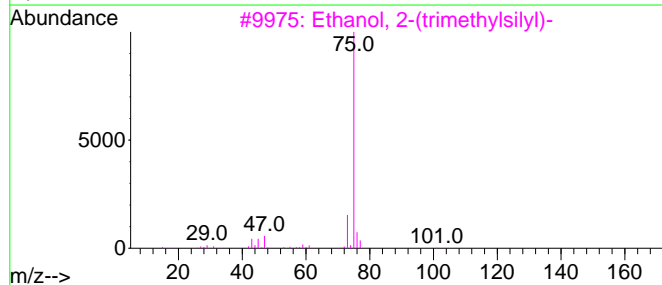
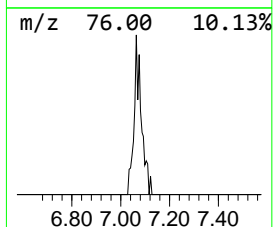
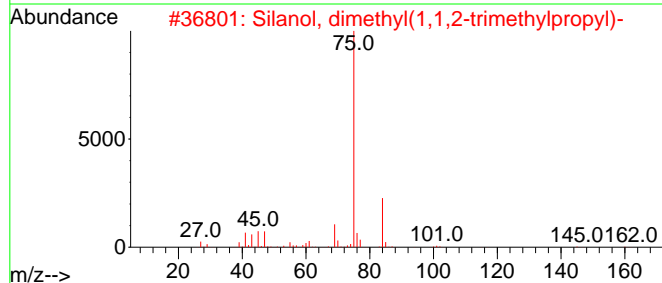
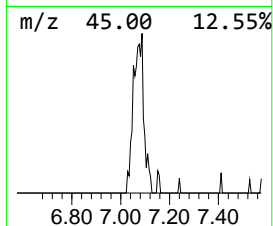
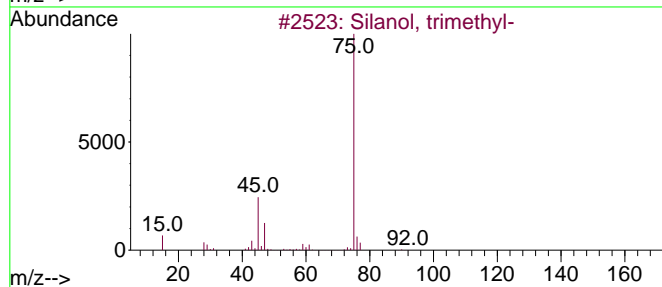
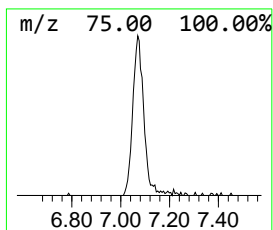
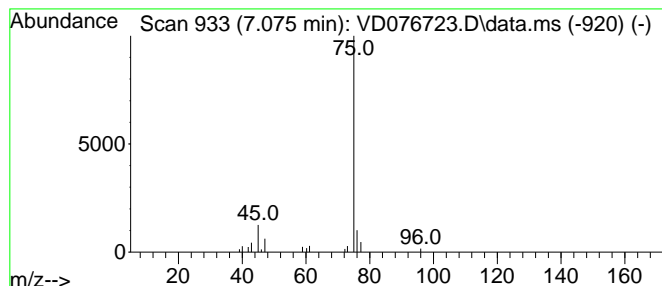
Quant Method : Z:\voasrv\HPCHEM1\MSVOA_D\Method\82D061623S.M
 Quant Title : SW846 8260

TIC Library : C:\Database\NIST20.L
 TIC Integration Parameters: LSCINT.P

 Peak Number 3 Silanol, trimethyl- Concentration Rank 2

R.T.	EstConc	Area	Relative to ISTD	R.T.
7.075	5.96 ug/l	63300	Pentafluorobenzene	7.875

Hit#	of	5	Tentative ID	MW	MolForm	CAS#	Qual
1			Silanol, trimethyl-	90	C3H10OSi	001066-40-6	78
2			Silanol, dimethyl(1,1,2-trimethyl...)	160	C8H20OSi	055644-10-5	64
3			Ethanol, 2-(trimethylsilyl)-	118	C5H14OSi	002916-68-9	43
4			Formamide, N-methylthio	75	C2H5NS	018952-41-5	39
5			Propanoic acid, 2,3-dihydroxy-	106	C3H6O4	000473-81-4	10



Data Path : Z:\voasrv\HPCHEM1\MSVOA_D\Data\VD071223\
Data File : VD076723.D
Acq On : 12 Jul 2023 10:18
Operator : KP/SY
Sample : VD0712SBL01
Misc : 5.00G/5.0ml/MSVOA_D/SOIL
ALS Vial : 4 Sample Multiplier: 1

Instrument :
MSVOA_D
ClientSampleId :
VD0712SBL01

Quant Method : Z:\voasrv\HPCHEM1\MSVOA_D\Method\82D061623S.M
Quant Title : SW846 8260

TIC Library : C:\Database\NIST20.L
TIC Integration Parameters: LSCINT.P

TIC Top Hit name	RT	EstConc	Units	Response	--Internal Standard--			
					#	RT	Resp	Conc
-----	-----	-----	-----	-----	-----	-----	-----	-----
Silanol, trimet...	7.075	6.0	ug/l	63300	1	7.875	530903	50.0