

Data Path : Z:\VOASRV\HPCHEM1\MSVOA D\DATA\VD072220\
 Data File : VD066008.D
 Acq On : 22 Jul 2020 18:11
 Operator : VA/SY
 Sample : L3189-01
 Misc : 7.60G/5.00ml/MSVOA D/SOIL
 ALS Vial : 17 Sample Multiplier: 1

Instrument :
 MSVOA_D
 ClientSampleId :
 BU-02-072120

Quant Time: Jul 23 01:06:09 2020
 Quant Method : Z:\VOASRV\HPCHEM1\MSVOA_D\METHOD\82D072120S.M
 Quant Title : SW846 8260
 QLast Update : Tue Jul 21 12:34:13 2020
 Response via : Initial Calibration

Internal Standards	R.T.	QIon	Response	Conc	Units	Dev(Min)
1) Pentafluorobenzene	7.98	168	309414	50.00	ug/l	0.00
34) 1,4-Difluorobenzene	8.87	114	556390	50.00	ug/l	0.00
63) Chlorobenzene-d5	11.65	117	573519	50.00	ug/l	0.00
72) 1,4-Dichlorobenzene-d4	13.58	152	278518	50.00	ug/l	0.00

System Monitoring Compounds

33) 1,2-Dichloroethane-d4	8.34	65	147770	58.69	ug/l	0.00
Spiked Amount				50.000		
				Recovery	=	117.38%
35) Dibromofluoromethane	7.91	113	169654	50.27	ug/l	0.00
Spiked Amount				50.000		
				Recovery	=	100.54%
50) Toluene-d8	10.34	98	665596	52.94	ug/l	0.00
Spiked Amount				50.000		
				Recovery	=	105.88%
62) 4-Bromofluorobenzene	12.64	95	252462	57.92	ug/l	0.00
Spiked Amount				50.000		
				Recovery	=	115.84%

Target Compounds

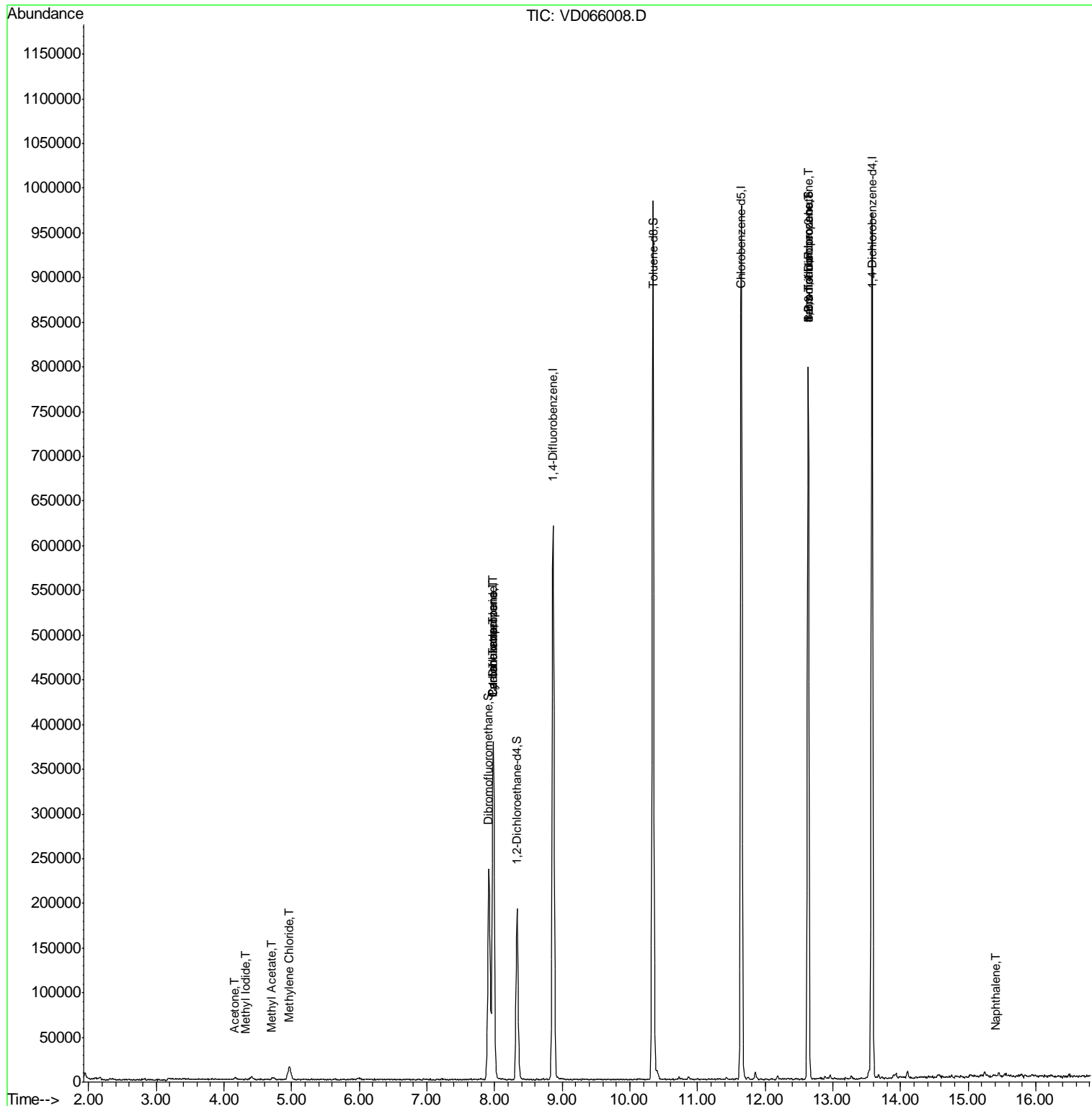
					Qvalue	
5) Bromomethane	2.78	94	74	Below Cal	#	49
10) Methyl Iodide	4.32	142	64	8.832	ug/l #	42
11) Tert butyl alcohol	5.24	59	63	Below Cal	#	83
16) Acetone	4.16	43	2887	5.665	ug/l	100
18) Methyl Acetate	4.70	43	2183	1.841	ug/l #	66
20) Methylene Chloride	4.97	84	11478	1.178	ug/l	86
31) Cyclohexane	7.98	56	5106	1.127	ug/l #	1
36) 1,1-Dichloropropene	7.98	75	20844	4.390	ug/l #	49
38) Carbon Tetrachloride	7.98	117	28603	5.551	ug/l #	17
71) Bromoform	12.64	173	2278	1.003	ug/l #	1
76) 1,2,3-Trichloropropane	12.64	75	126570	60.355	ug/l #	100
81) trans-1,4-Dichloro-2-buten	12.64	75	126570	138.494	ug/l #	11
95) Naphthalene	15.41	128	2459	3.805	ug/l #	76

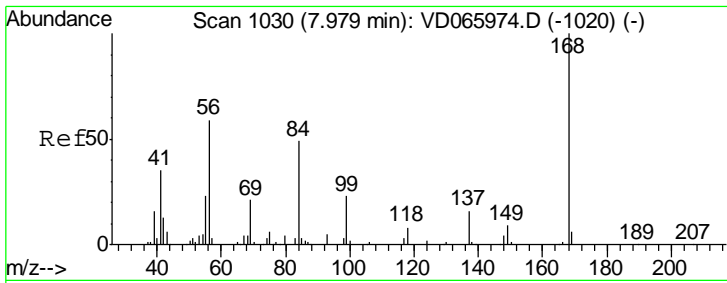
(#) = qualifier out of range (m) = manual integration (+) = signals summed

Data Path : Z:\VOASRV\HPCHEM1\MSVOA D\DATA\VD072220\
 Data File : VD066008.D
 Acq On : 22 Jul 2020 18:11
 Operator : VA/SY
 Sample : L3189-01
 Misc : 7.60G/5.00ml/MSVOA D/SOIL
 ALS Vial : 17 Sample Multiplier: 1

Instrument :
 MSVOA_D
 ClientSampleId :
 BU-02-072120

Quant Time: Jul 23 01:06:09 2020
 Quant Method : Z:\VOASRV\HPCHEM1\MSVOA_D\METHOD\82D072120S.M
 Quant Title : SW846 8260
 QLast Update : Tue Jul 21 12:34:13 2020
 Response via : Initial Calibration

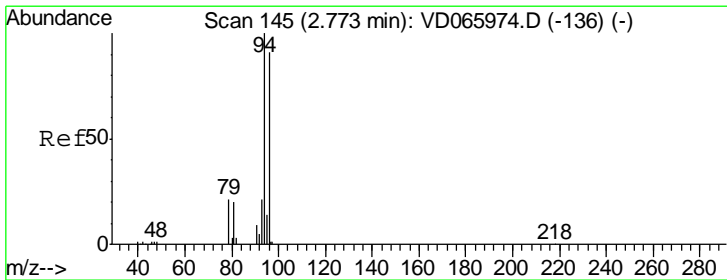
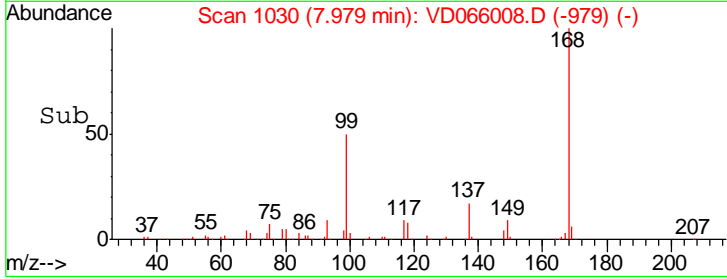
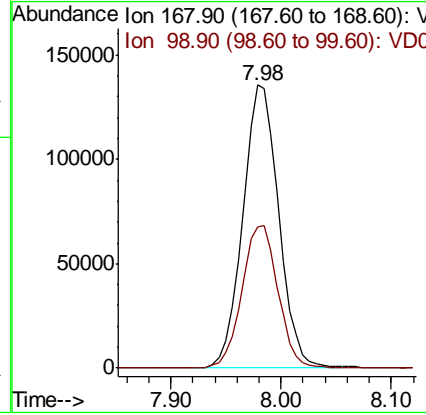
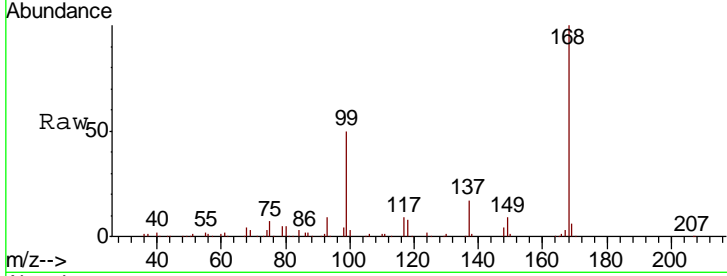




#1
 Pentafluorobenzene
 Concen: 50.000 ug/l
 RT: 7.98 min Scan# 1030
 Delta R.T. -0.00 min
 Lab File: VD066008.D
 Acq: 22 Jul 2020 18:11

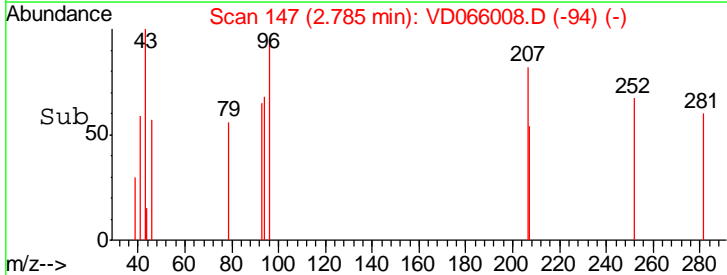
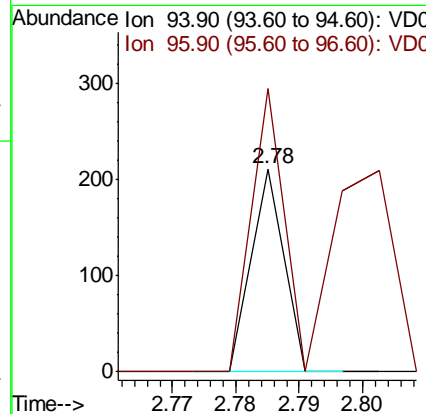
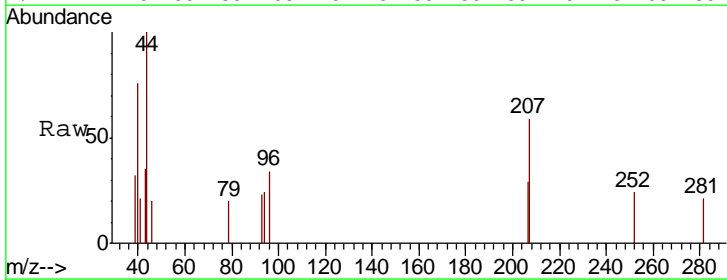
Instrument :
 MSVOA_D
 ClientSampled :
 BU-02-072120

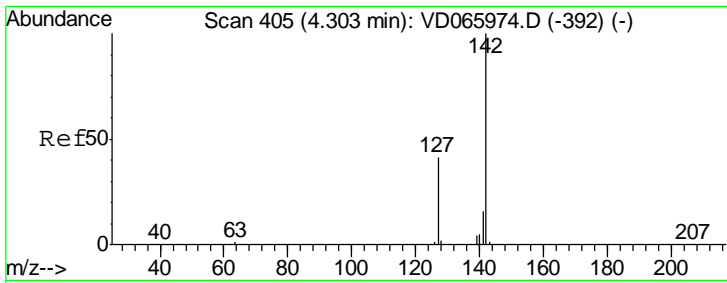
Tgt Ion: 168 Resp: 309414
 Ion Ratio Lower Upper
 168 100
 99 50.0 40.8 61.2



#5
 Bromomethane
 Concen: Below Cal
 RT: 2.78 min Scan# 147
 Delta R.T. 0.01 min
 Lab File: VD066008.D
 Acq: 22 Jul 2020 18:11

Tgt Ion: 94 Resp: 74
 Ion Ratio Lower Upper
 94 100
 96 139.3 73.0 109.4#

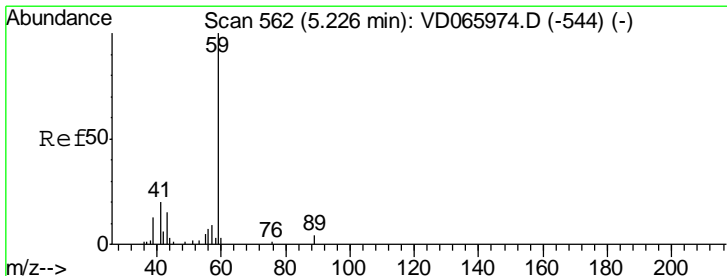
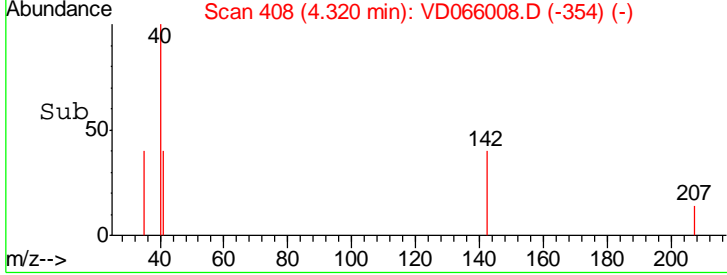
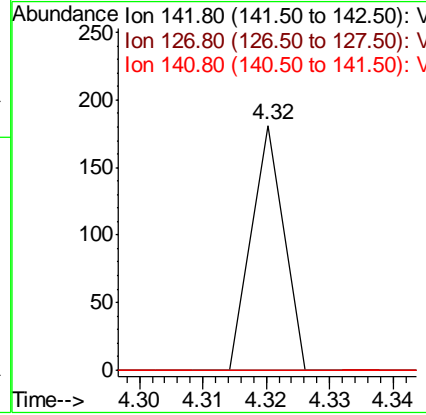
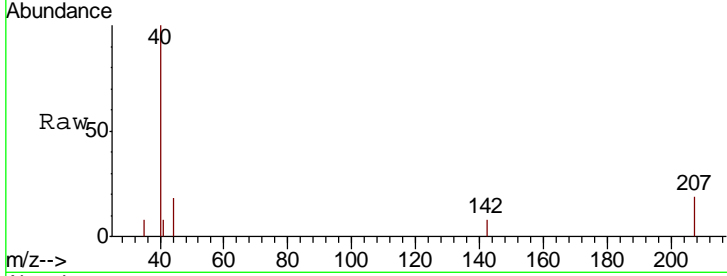




#10
 Methyl Iodide
 Concen: 8.832 ug/l
 RT: 4.32 min Scan# 408
 Delta R.T. 0.02 min
 Lab File: VD066008.D
 Acq: 22 Jul 2020 18:11

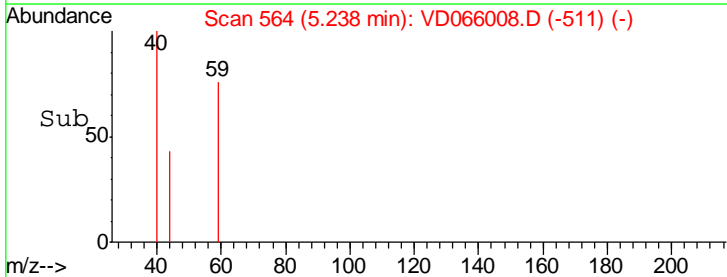
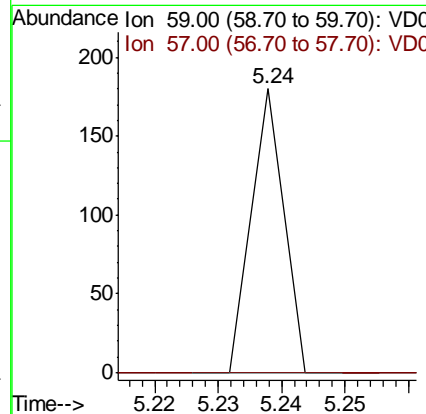
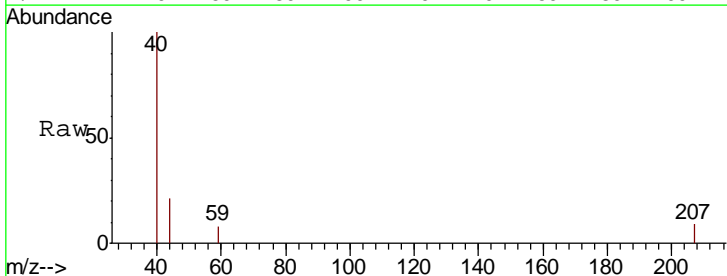
Instrument :
 MSVOA_D
ClientSampleId :
 BU-02-072120

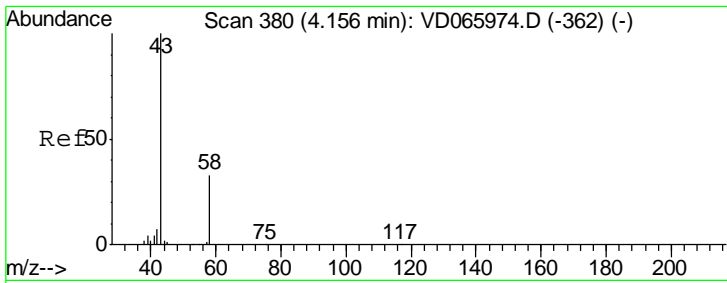
Tgt Ion	Resp	Lower	Upper
142	100		
127	0.0	32.9	49.3#
141	0.0	11.8	17.6#



#11
 Tert butyl alcohol
 Concen: Below Cal
 RT: 5.24 min Scan# 564
 Delta R.T. 0.01 min
 Lab File: VD066008.D
 Acq: 22 Jul 2020 18:11

Tgt Ion	Resp	Lower	Upper
59	100		
57	0.0	4.5	6.7#

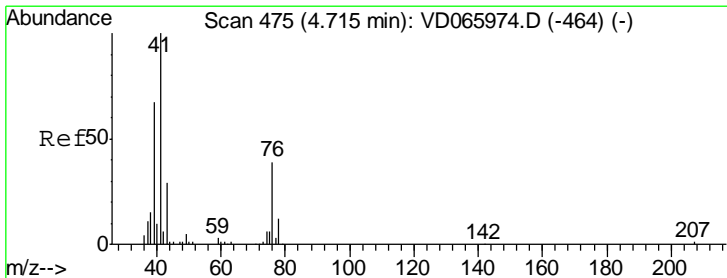
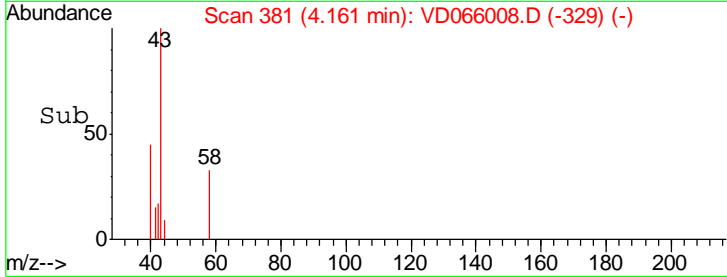
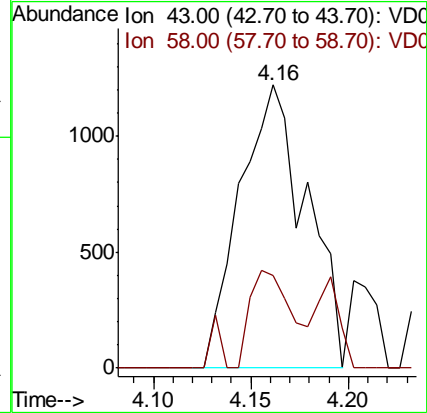
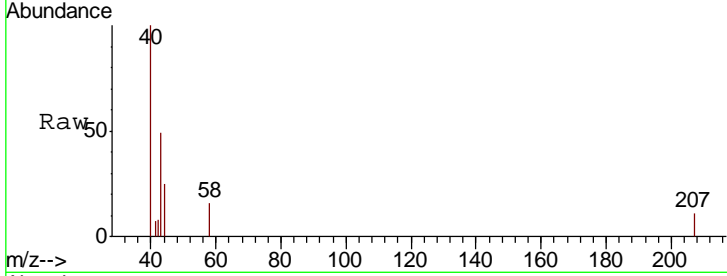




#16
 Acetone
 Concen: 5.665 ug/l
 RT: 4.16 min Scan# 381
 Delta R.T. 0.01 min
 Lab File: VD066008.D
 Acq: 22 Jul 2020 18:11

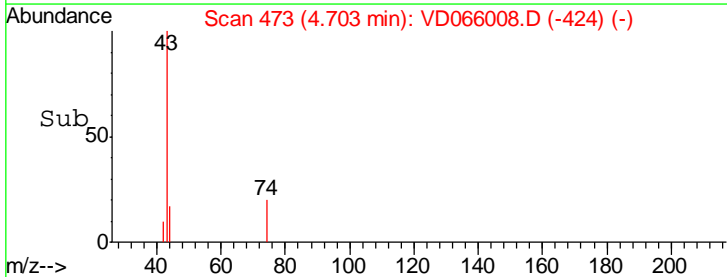
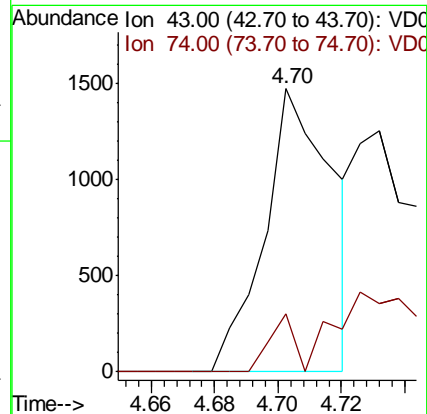
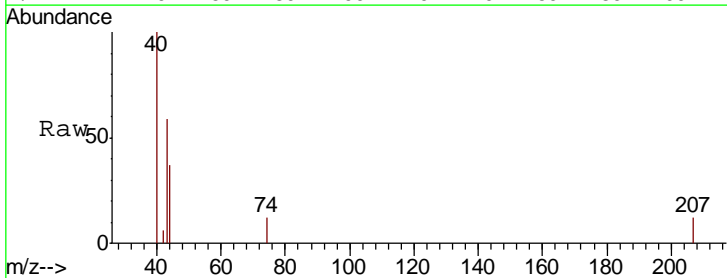
Instrument :
 MSVOA_D
 ClientSampleId :
 BU-02-072120

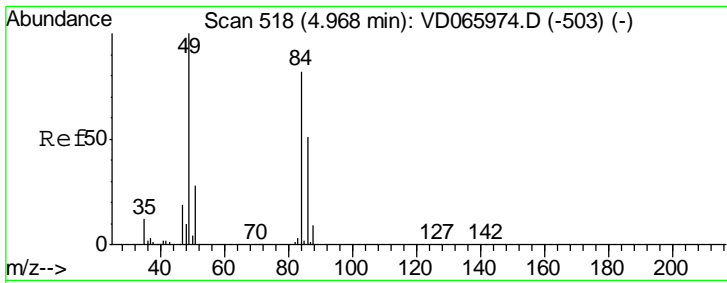
Tgt Ion: 43 Resp: 2887
 Ion Ratio Lower Upper
 43 100
 58 32.7 26.3 39.5



#18
 Methyl Acetate
 Concen: 1.841 ug/l
 RT: 4.70 min Scan# 473
 Delta R.T. -0.01 min
 Lab File: VD066008.D
 Acq: 22 Jul 2020 18:11

Tgt Ion: 43 Resp: 2183
 Ion Ratio Lower Upper
 43 100
 74 7.4 19.2 28.8#

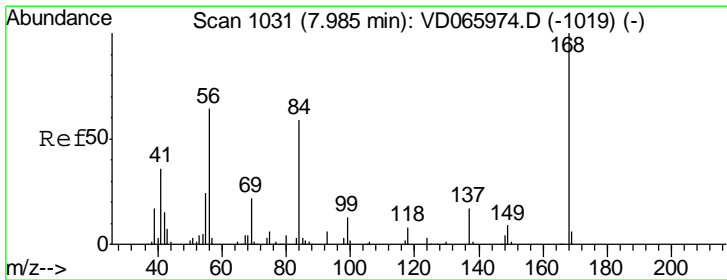
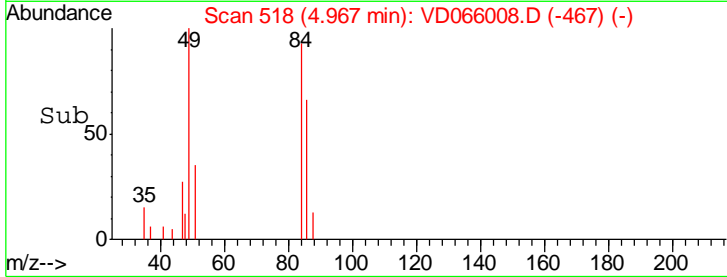
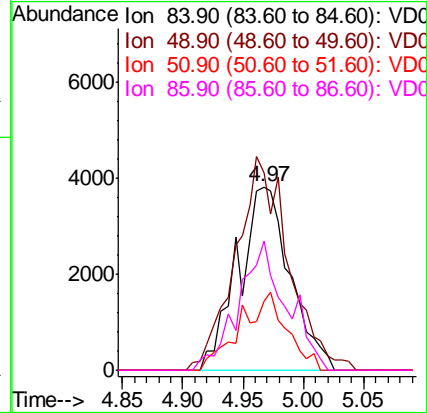
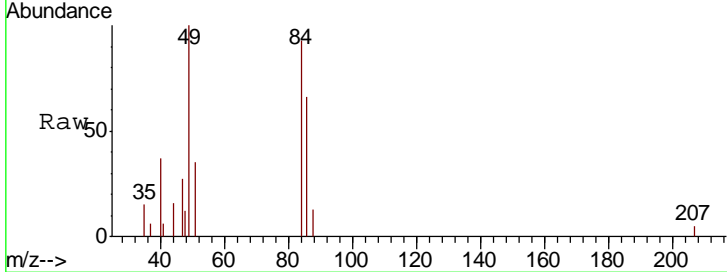




#20
 Methylene Chloride
 Concen: 1.178 ug/l
 RT: 4.97 min Scan# 518
 Delta R.T. 0.00 min
 Lab File: VD066008.D
 Acq: 22 Jul 2020 18:11

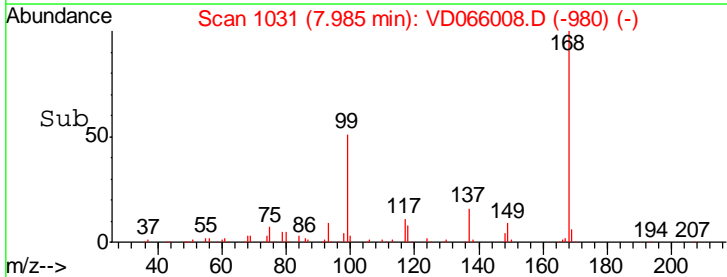
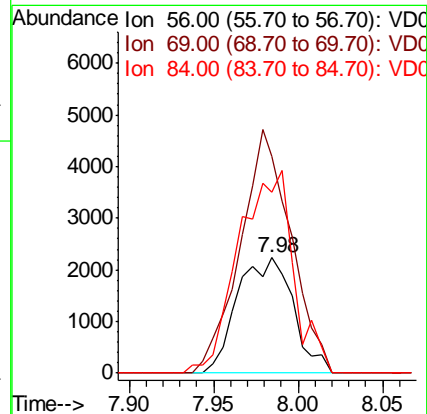
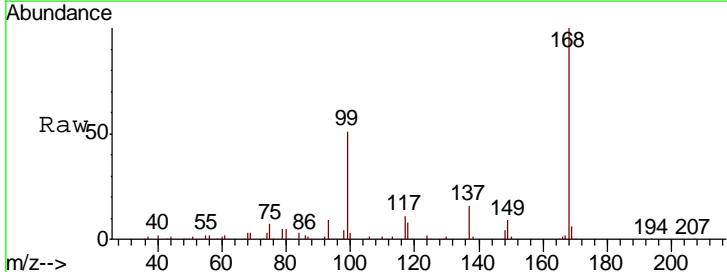
Instrument :
 MSVOA_D
 ClientSampled :
 BU-02-072120

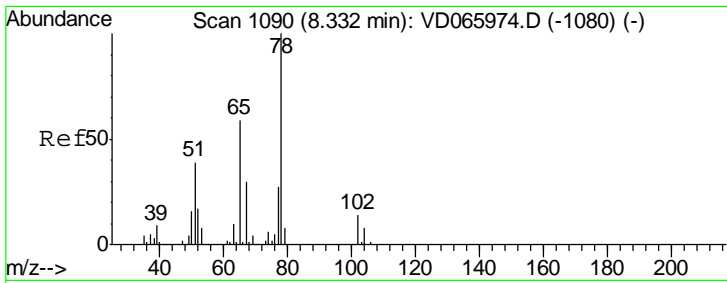
Tgt Ion	Resp	Lower	Upper
84	11478		
84	100		
49	103.3	97.7	146.5
51	37.7	27.4	41.2
86	70.6	49.4	74.2



#31
 Cyclohexane
 Concen: 1.127 ug/l
 RT: 7.98 min Scan# 1031
 Delta R.T. -0.00 min
 Lab File: VD066008.D
 Acq: 22 Jul 2020 18:11

Tgt Ion	Resp	Lower	Upper
56	5106		
56	100		
69	187.5	28.0	42.0#
84	156.6	72.6	109.0#

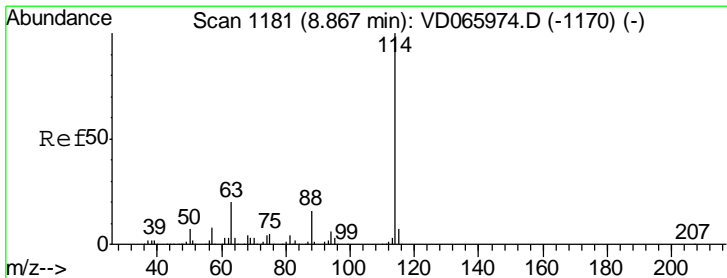
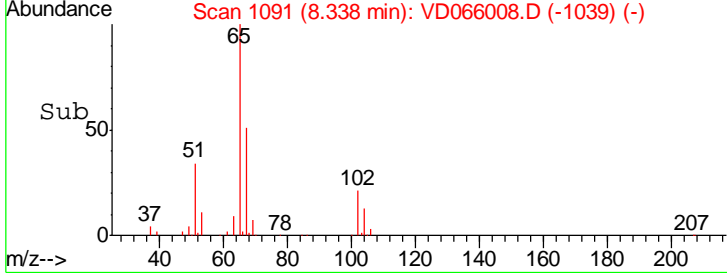
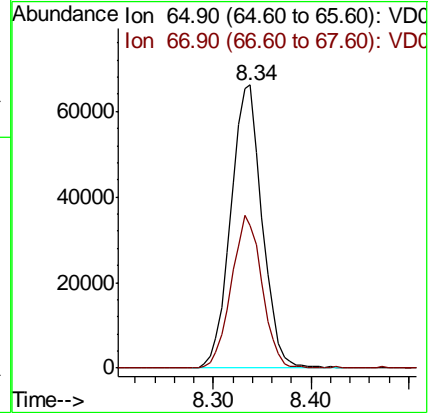
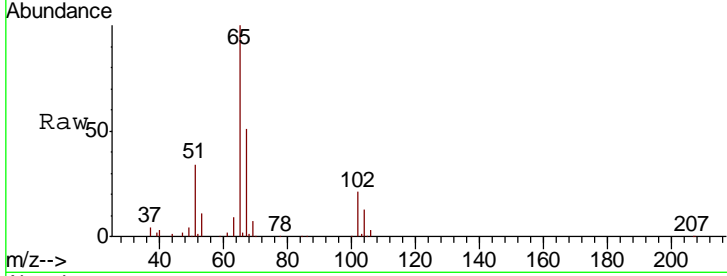




#33
 1,2-Dichloroethane-d4
 Concen: 58.693 ug/l
 RT: 8.34 min Scan# 1091
 Delta R.T. 0.01 min
 Lab File: VD066008.D
 Acq: 22 Jul 2020 18:11

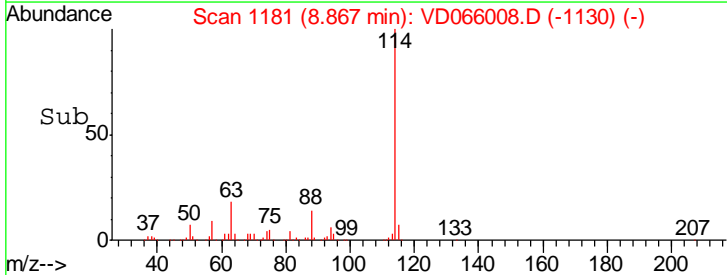
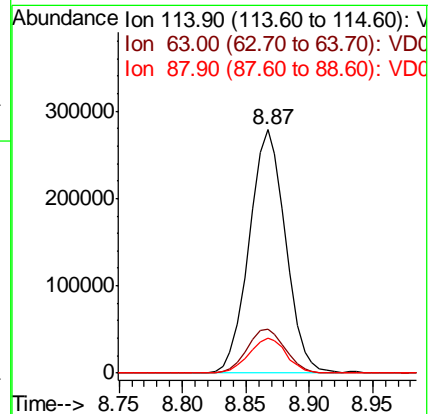
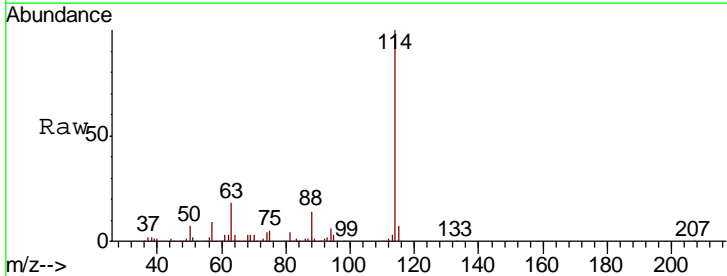
Instrument :
 MSVOA_D
 ClientSampleId :
 BU-02-072120

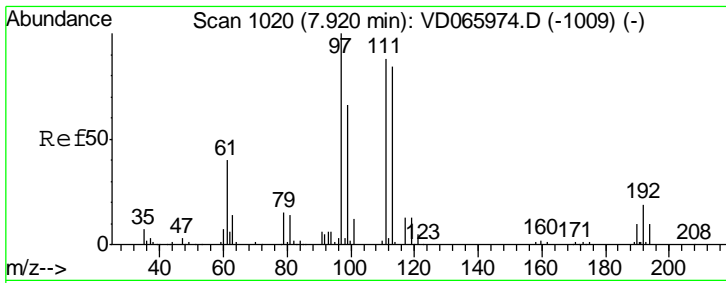
Tgt Ion: 65 Resp: 147770
 Ion Ratio Lower Upper
 65 100
 67 52.5 0.0 105.0



#34
 1,4-Difluorobenzene
 Concen: 50.000 ug/l
 RT: 8.87 min Scan# 1181
 Delta R.T. -0.00 min
 Lab File: VD066008.D
 Acq: 22 Jul 2020 18:11

Tgt Ion: 114 Resp: 556390
 Ion Ratio Lower Upper
 114 100
 63 17.8 0.0 39.6
 88 14.3 0.0 31.2

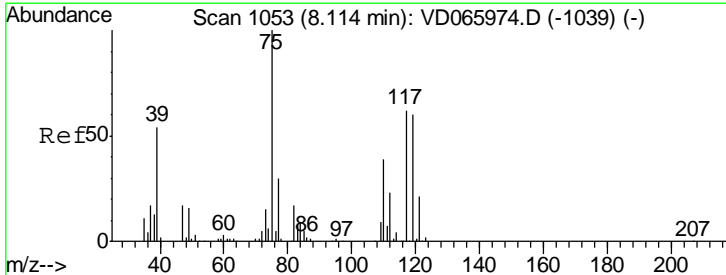
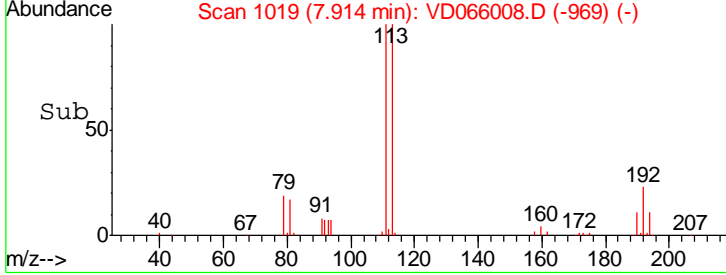
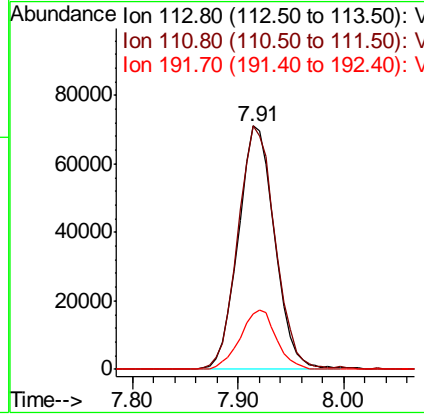
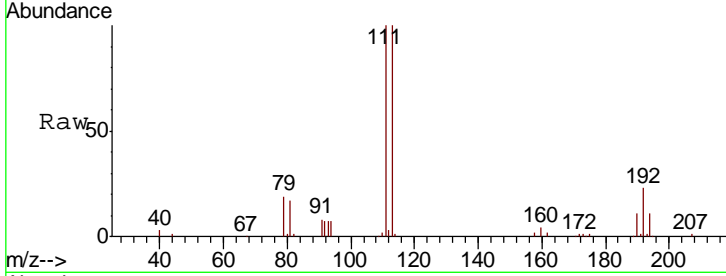




#35
 Dibromofluoromethane
 Concen: 50.273 ug/l
 RT: 7.91 min Scan# 1019
 Delta R.T. -0.01 min
 Lab File: VD066008.D
 Acq: 22 Jul 2020 18:11

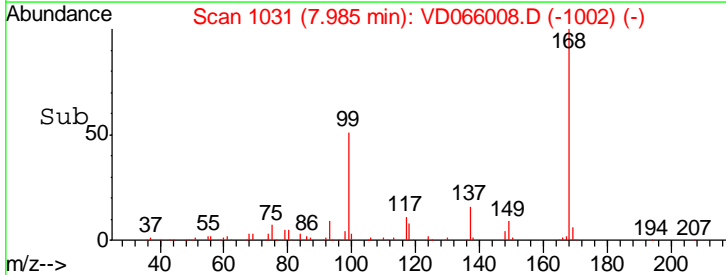
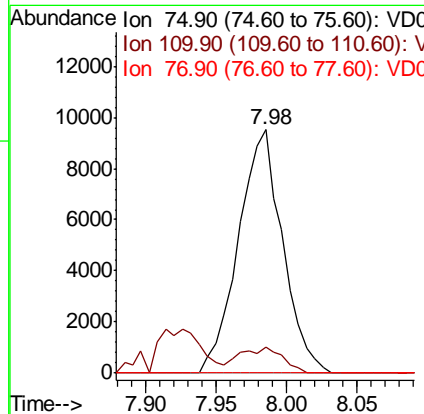
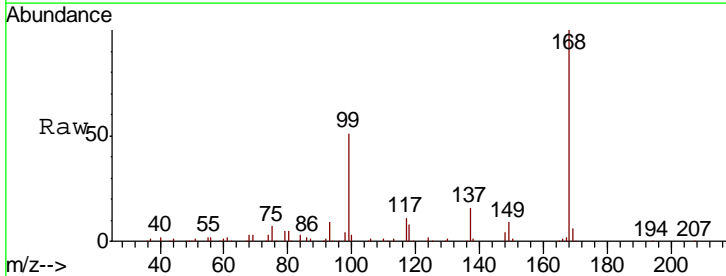
Instrument :
 MSVOA_D
ClientSampled :
 BU-02-072120

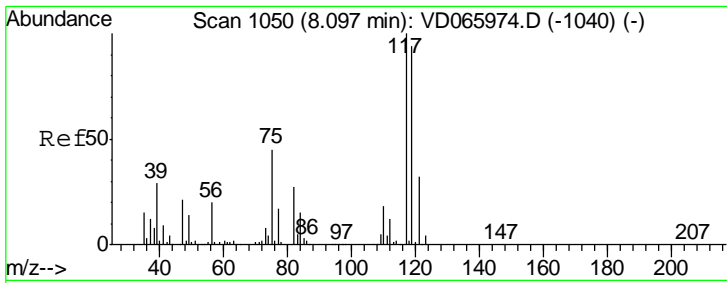
Tgt Ion	Resp	Lower	Upper
113	169654		
113	100		
111	102.4	83.2	124.8
192	24.2	18.7	28.1



#36
 1,1-Dichloropropene
 Concen: 4.390 ug/l
 RT: 7.98 min Scan# 1031
 Delta R.T. -0.13 min
 Lab File: VD066008.D
 Acq: 22 Jul 2020 18:11

Tgt Ion	Resp	Lower	Upper
75	20844		
75	100		
110	10.3	19.5	58.5#
77	0.0	24.7	37.1#

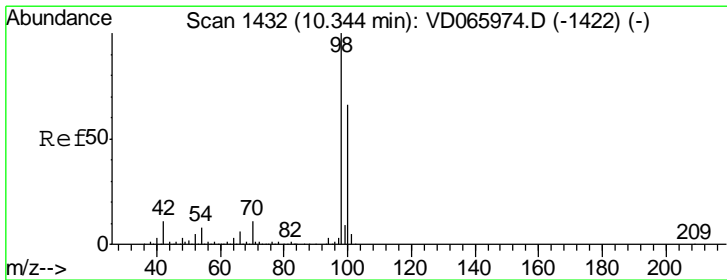
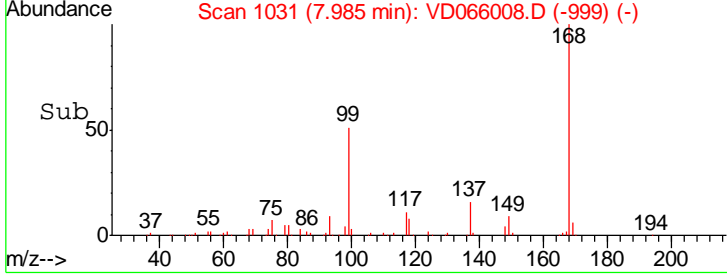
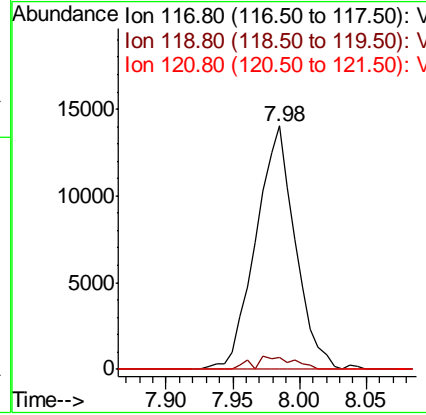
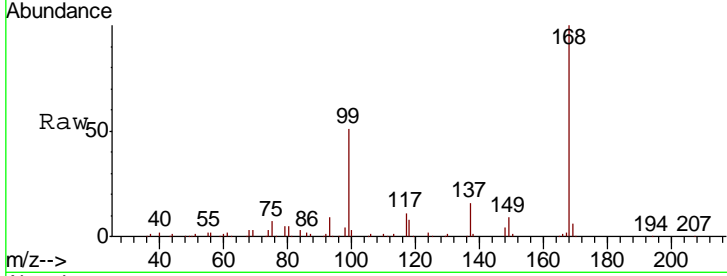




#38
 Carbon Tetrachloride
 Concen: 5.551 ug/l
 RT: 7.98 min Scan# 1031
 Delta R.T. -0.11 min
 Lab File: VD066008.D
 Acq: 22 Jul 2020 18:11

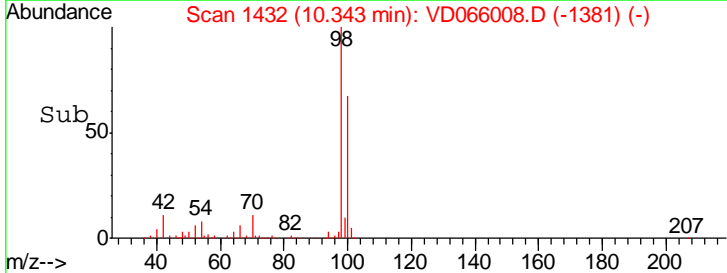
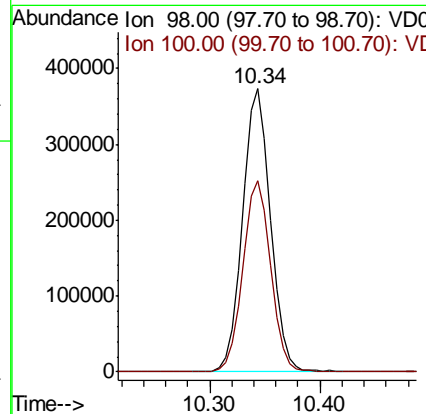
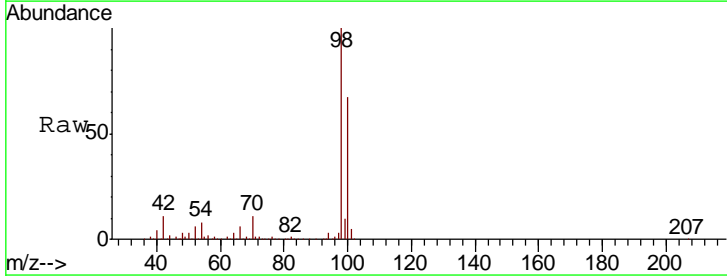
Instrument :
 MSVOA_D
ClientSampled :
 BU-02-072120

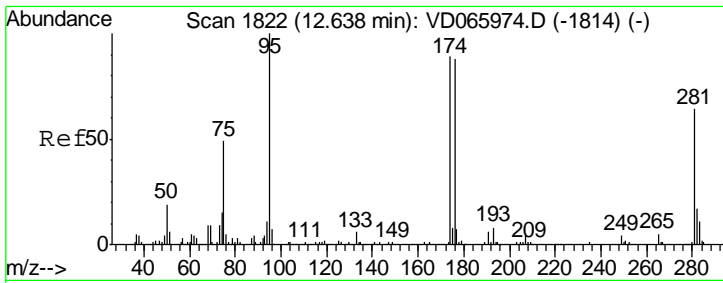
Tgt Ion	Resp	Lower	Upper
117	100		
119	4.8	75.0	112.6#
121	0.0	25.5	38.3#



#50
 Toluene-d8
 Concen: 52.945 ug/l
 RT: 10.34 min Scan# 1432
 Delta R.T. -0.00 min
 Lab File: VD066008.D
 Acq: 22 Jul 2020 18:11

Tgt Ion	Resp	Lower	Upper
98	100		
100	67.4	52.7	79.1

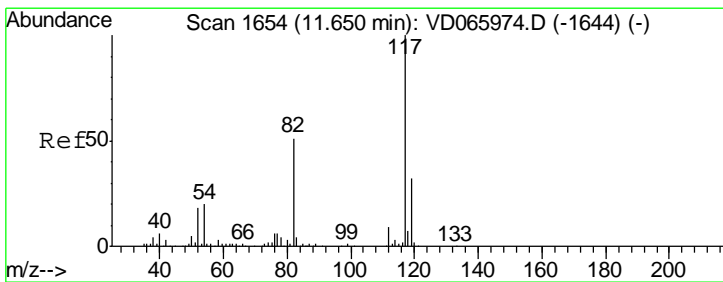
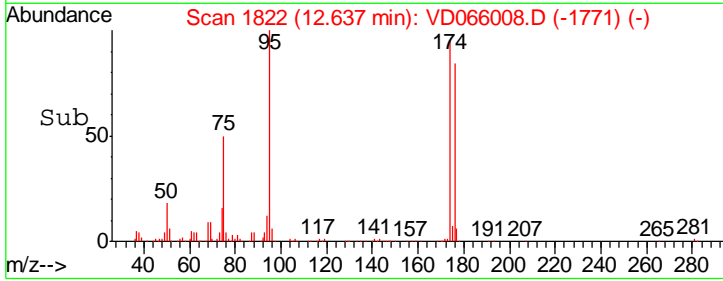
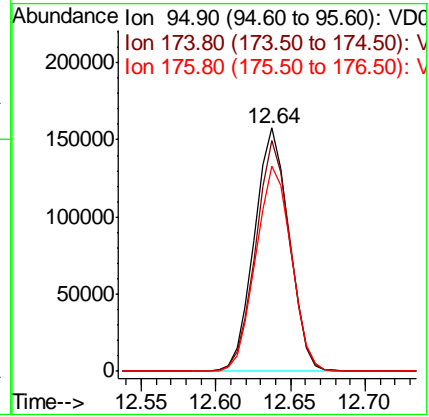
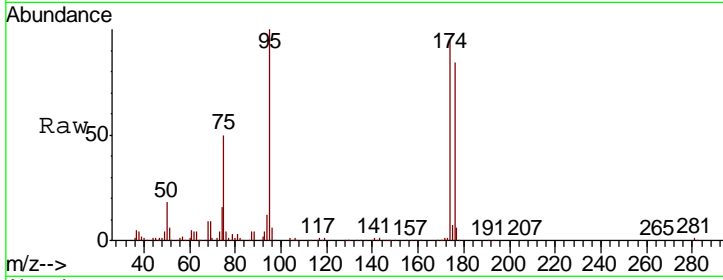




#62
 4-Bromofluorobenzene
 Concen: 57.917 ug/l
 RT: 12.64 min Scan# 1822
 Delta R.T. -0.00 min
 Lab File: VD066008.D
 Acq: 22 Jul 2020 18:11

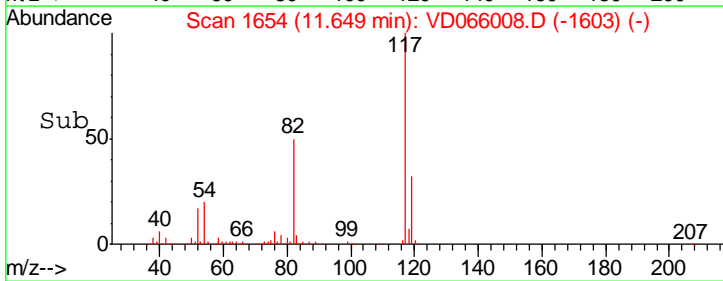
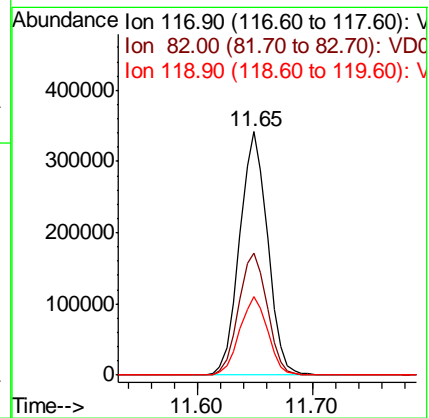
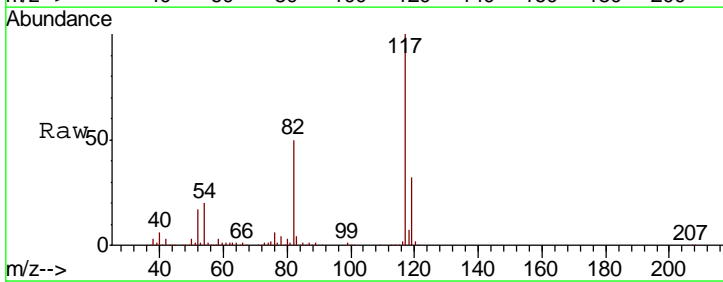
Instrument : MSVOA_D
 ClientSampled : BU-02-072120

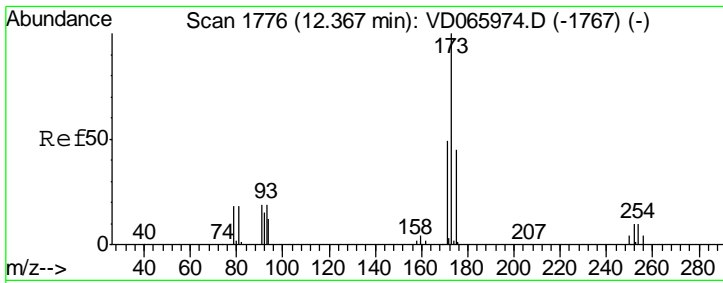
Tgt Ion	Resp	Lower	Upper
95	100		
174	93.8	0.0	178.8
176	87.0	0.0	172.6



#63
 Chlorobenzene-d5
 Concen: 50.000 ug/l
 RT: 11.65 min Scan# 1654
 Delta R.T. -0.00 min
 Lab File: VD066008.D
 Acq: 22 Jul 2020 18:11

Tgt Ion	Resp	Lower	Upper
117	100		
82	50.2	41.1	61.7
119	32.2	25.9	38.9

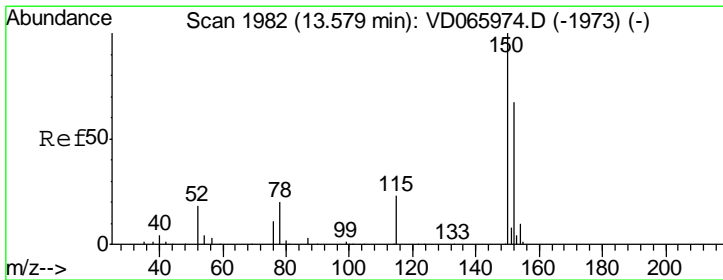
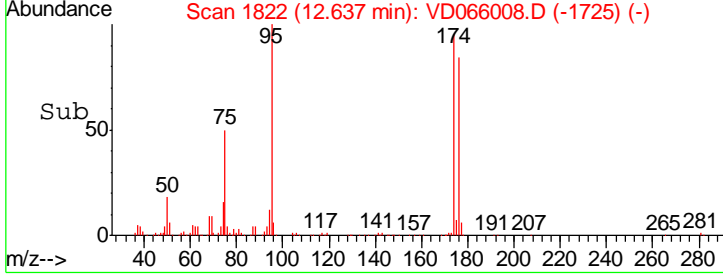
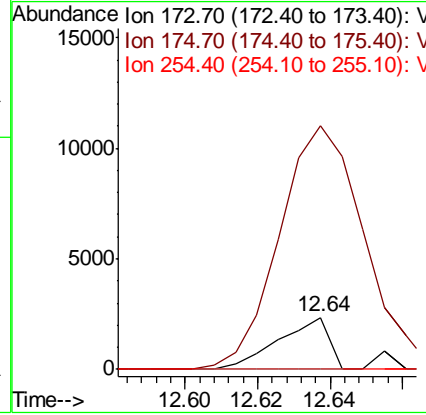
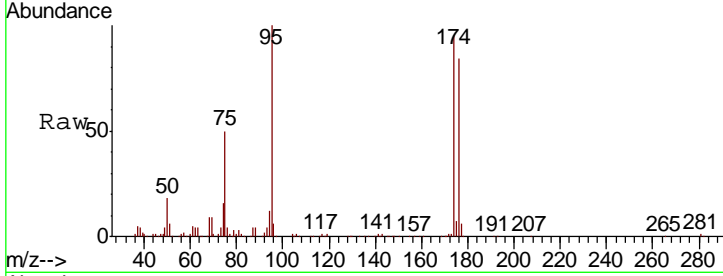




#71
 Bromoform
 Concen: 1.003 ug/l
 RT: 12.64 min Scan# 1822
 Delta R.T. 0.27 min
 Lab File: VD066008.D
 Acq: 22 Jul 2020 18:11

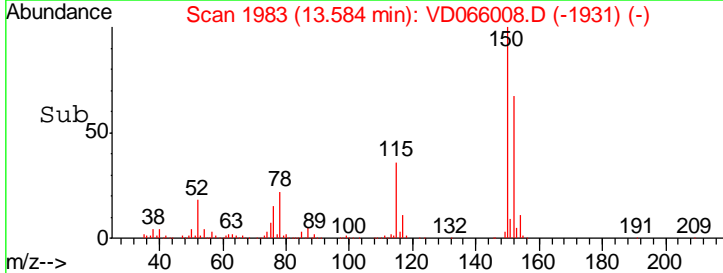
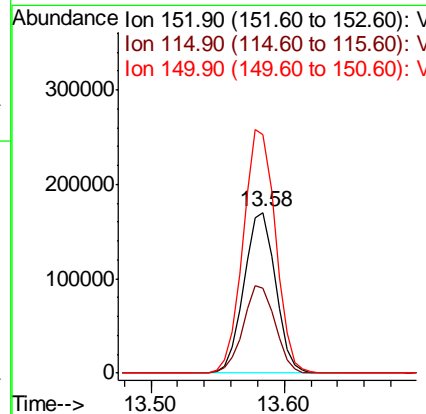
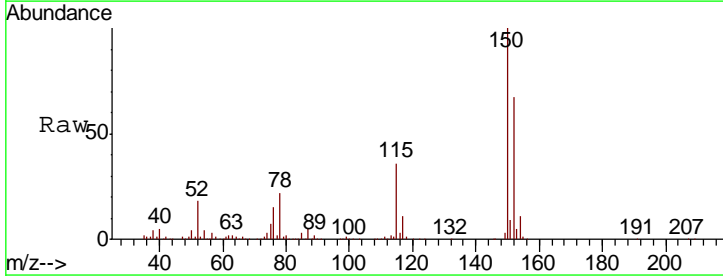
Instrument :
 MSVOA_D
 ClientSampled :
 BU-02-072120

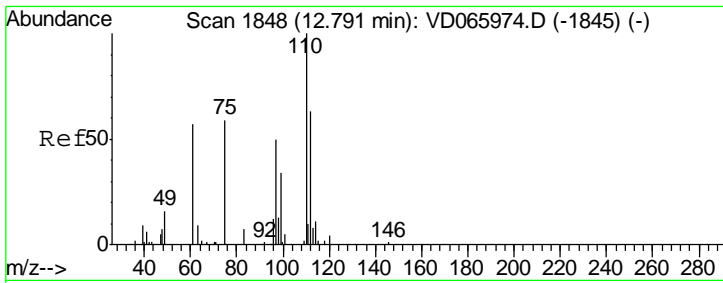
Tgt Ion	Resp	Lower	Upper
173	100		
175	612.5	24.1	72.3#
254	0.0	0.0	0.0



#72
 1,4-Dichlorobenzene-d4
 Concen: 50.000 ug/l
 RT: 13.58 min Scan# 1983
 Delta R.T. 0.01 min
 Lab File: VD066008.D
 Acq: 22 Jul 2020 18:11

Tgt Ion	Resp	Lower	Upper
152	100		
115	54.5	27.9	83.7
150	154.9	0.0	348.2

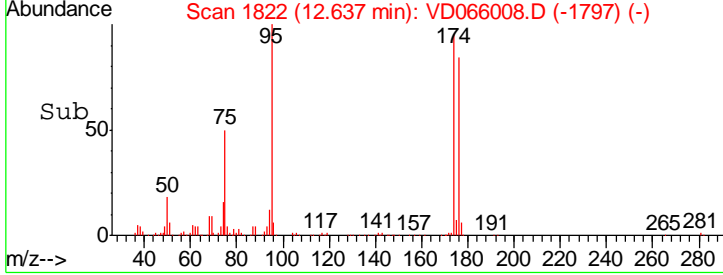
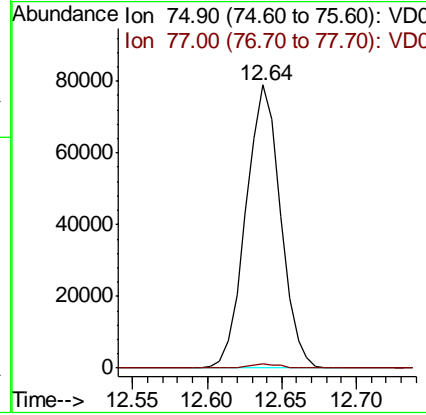
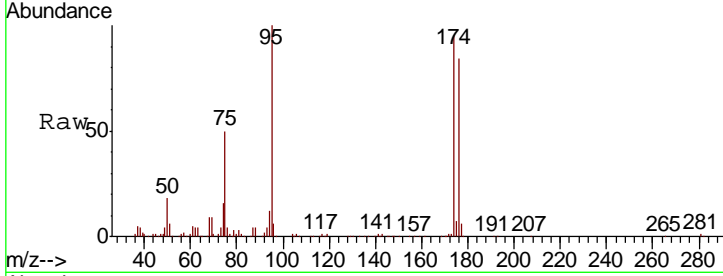




#76
 1,2,3-Trichloropropane
 Concen: 60.355 ug/l
 RT: 12.64 min Scan# 1822
 Delta R.T. -0.15 min
 Lab File: VD066008.D
 Acq: 22 Jul 2020 18:11

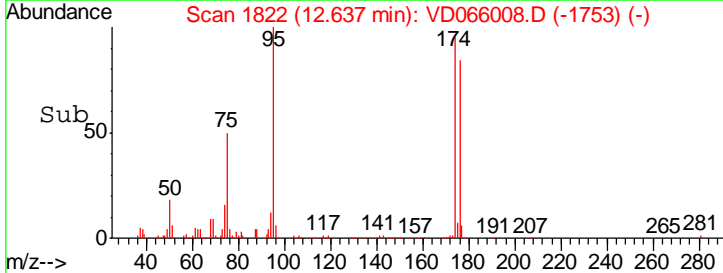
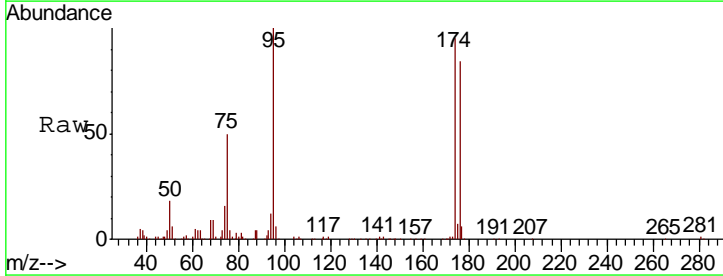
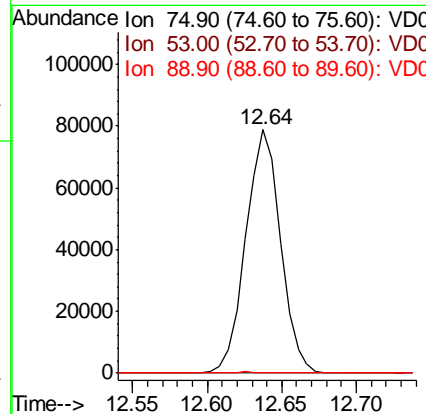
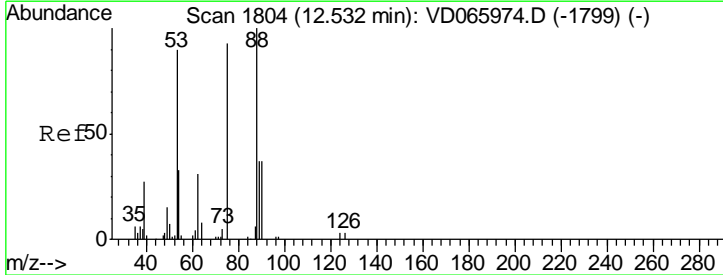
Instrument : MSVOA_D
 ClientSampled : BU-02-072120

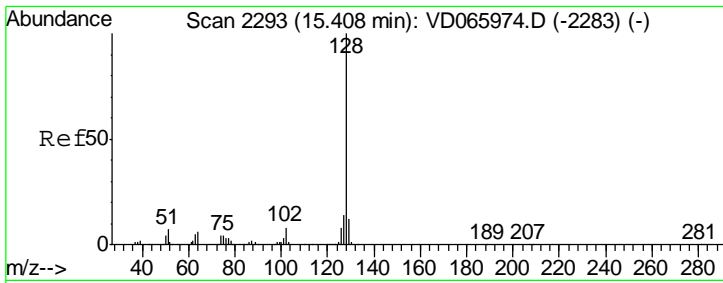
Tgt Ion	Resp	Lower	Upper
75	100		
77	1.3	0.0	0.0#



#81
 trans-1,4-Dichloro-2-butene
 Concen: 138.494 ug/l
 RT: 12.64 min Scan# 1822
 Delta R.T. 0.11 min
 Lab File: VD066008.D
 Acq: 22 Jul 2020 18:11

Tgt Ion	Resp	Lower	Upper
75	100		
53	0.0	76.8	115.2#
89	0.1	37.0	55.4#





#95
 Naphthalene
 Concen: 3.805 ug/l
 RT: 15.41 min Scan# 2294
 Delta R.T. 0.01 min
 Lab File: VD066008.D
 Acq: 22 Jul 2020 18:11

Instrument : MSVOA_D
 ClientSampled : BU-02-072120

Tot Ion	Ratio	Lower	Upper
128	100		
127	2.8	10.8	16.2#
129	3.1	8.9	13.3#

