

Data Path : Z:\voasrv\HPCHEM1\MSVOA\_D\Data\VD072821\  
 Data File : VD069898.D  
 Acq On : 28 Jul 2021 19:44  
 Operator : VA/SY  
 Sample : M3223-05  
 Misc : 5.77G/5.00ml/MSVOA\_D/SOIL  
 ALS Vial : 20 Sample Multiplier: 1

Instrument :  
 MSVOA\_D  
 ClientSampleId :

Quant Time: Jul 29 04:03:09 2021  
 Quant Method : Z:\voasrv\HPCHEM1\MSVOA\_D\Method\82D072221S.M  
 Quant Title : SW846 8260  
 QLast Update : Fri Jul 23 04:51:13 2021  
 Response via : Initial Calibration

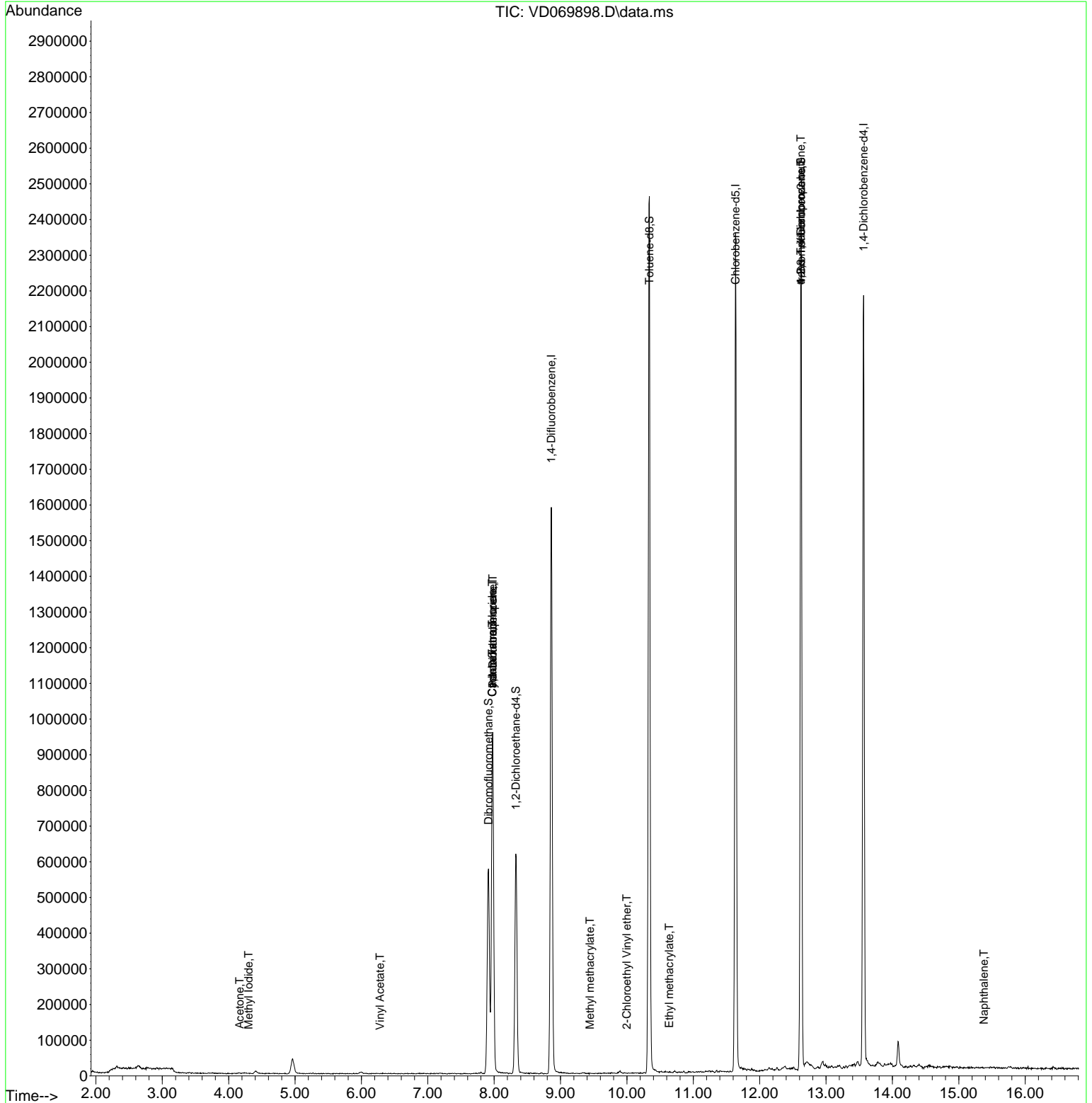
Compound	R.T.	QIon	Response	Conc	Units	Dev(Min)
-----						
Internal Standards						
1) Pentafluorobenzene	7.979	168	686358	50.000	ug/l	0.00
34) 1,4-Difluorobenzene	8.861	114	1365505	50.000	ug/l	0.00
63) Chlorobenzene-d5	11.638	117	1343450	50.000	ug/l	0.00
72) 1,4-Dichlorobenzene-d4	13.567	152	571529	50.000	ug/l	0.00
System Monitoring Compounds						
33) 1,2-Dichloroethane-d4	8.326	65	487984	61.819	ug/l	0.00
Spiked Amount	50.000	Range	50 - 163	Recovery	=	123.640%
35) Dibromofluoromethane	7.914	113	429478	49.892	ug/l	0.00
Spiked Amount	50.000	Range	54 - 147	Recovery	=	99.780%
50) Toluene-d8	10.338	98	1703664	51.327	ug/l	0.00
Spiked Amount	50.000	Range	49 - 140	Recovery	=	102.660%
62) 4-Bromofluorobenzene	12.626	95	631462	56.924	ug/l	0.00
Spiked Amount	50.000	Range	25 - 144	Recovery	=	113.840%
Target Compounds						
						Qvalue
5) Bromomethane	2.773	94	1899	Below Cal		92
10) Methyl Iodide	4.303	142	632	3.531	ug/l #	88
16) Acetone	4.167	43	1992	1.397	ug/l #	80
20) Methylene Chloride	4.961	84	34248	Below Cal		86
23) Vinyl Acetate	6.279	43	96	20.356	ug/l #	71
31) Cyclohexane	7.973	56	16300	1.057	ug/l #	1
36) 1,1-Dichloropropene	7.979	75	62256	4.225	ug/l #	50
38) Carbon Tetrachloride	7.973	117	75518	5.610	ug/l #	16
48) Methyl methacrylate	9.444	41	365	2.814	ug/l #	34
56) Ethyl methacrylate	10.638	69	362	3.931	ug/l #	61
58) 2-Chloroethyl Vinyl ether	9.997	63	67	20.885	ug/l #	48
76) 1,2,3-Trichloropropane	12.620	75	318524	52.433	ug/l #	1
81) trans-1,4-Dichloro-2-b...	12.620	75	318524	159.066	ug/l #	17
95) Naphthalene	15.379	128	409	5.018	ug/l #	69
-----						

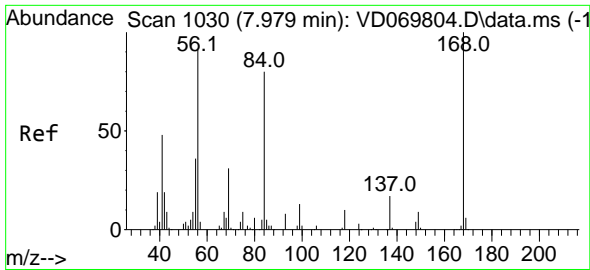
(#) = qualifier out of range (m) = manual integration (+) = signals summed

Data Path : Z:\voasrv\HPCHEM1\MSVOA\_D\Data\VD072821\  
 Data File : VD069898.D  
 Acq On : 28 Jul 2021 19:44  
 Operator : VA/SY  
 Sample : M3223-05  
 Misc : 5.77G/5.00ml/MSVOA\_D/SOIL  
 ALS Vial : 20 Sample Multiplier: 1

Instrument :  
 MSVOA\_D  
 ClientSampled :

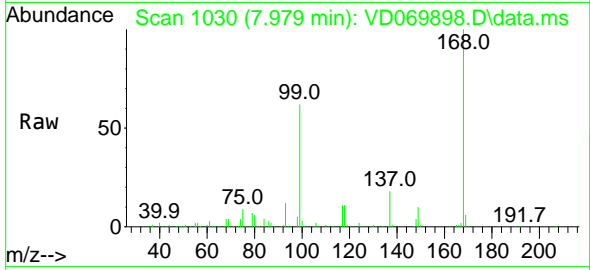
Quant Time: Jul 29 04:03:09 2021  
 Quant Method : Z:\voasrv\HPCHEM1\MSVOA\_D\Method\82D072221S.M  
 Quant Title : SW846 8260  
 QLast Update : Fri Jul 23 04:51:13 2021  
 Response via : Initial Calibration



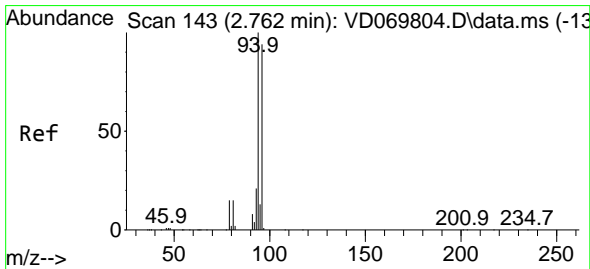
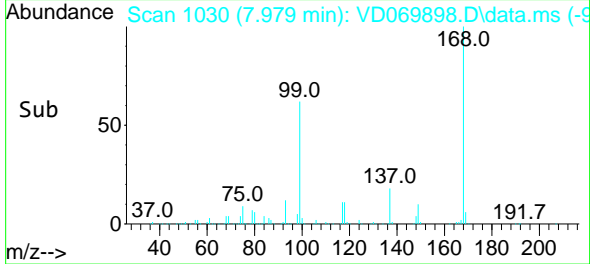
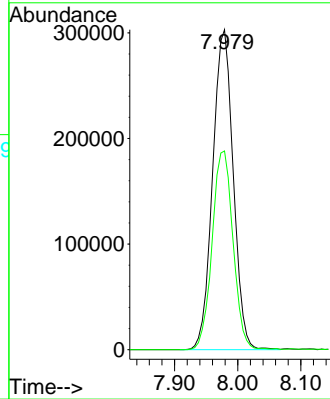


#1  
 Pentafluorobenzene  
 Concen: 50.000 ug/l  
 RT: 7.979 min Scan# 1030  
 Delta R.T. -0.000 min  
 Lab File: VD069898.D  
 Acq: 28 Jul 2021 19:44

Instrument :  
 MSVOA\_D  
 ClientSampled :

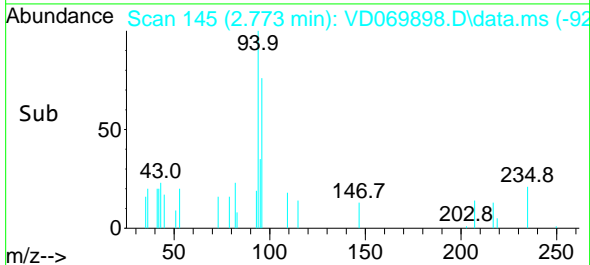
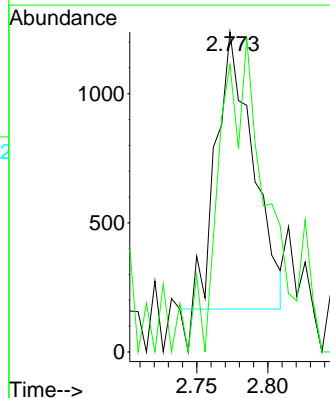
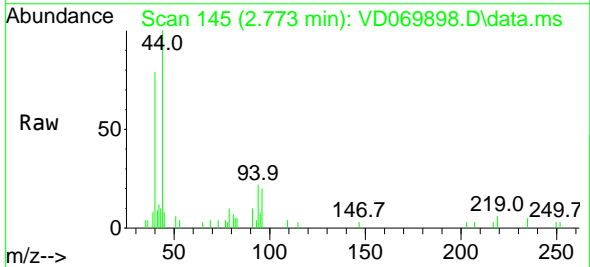


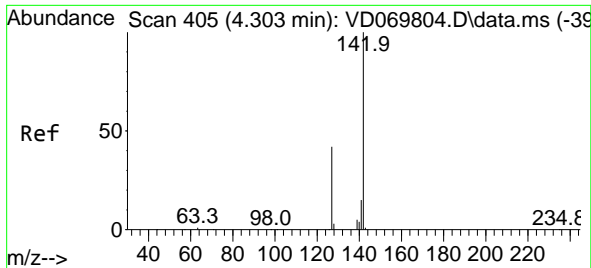
Tgt Ion:168 Resp: 686358  
 Ion Ratio Lower Upper  
 168 100  
 99 62.1 51.1 76.7



#5  
 Bromomethane  
 Concen: Below Cal  
 RT: 2.773 min Scan# 145  
 Delta R.T. 0.011 min  
 Lab File: VD069898.D  
 Acq: 28 Jul 2021 19:44

Tgt Ion: 94 Resp: 1899  
 Ion Ratio Lower Upper  
 94 100  
 96 86.2 74.8 112.2



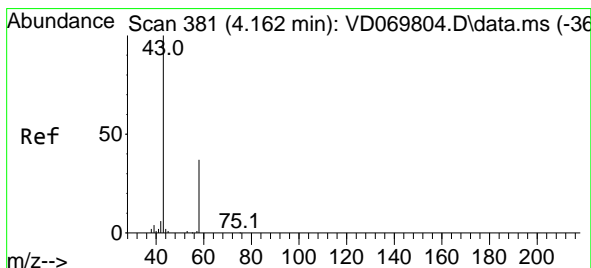
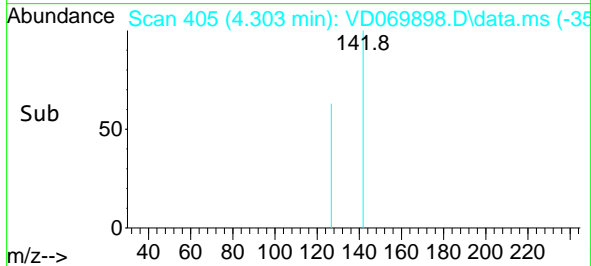
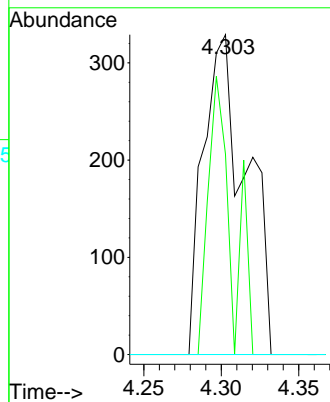
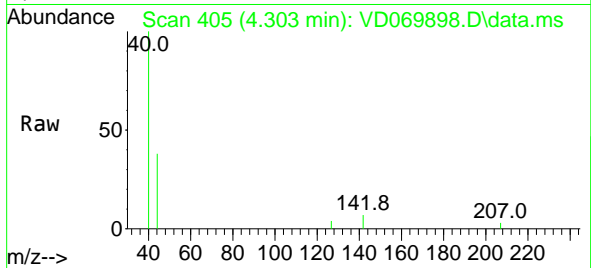


#10  
Methyl Iodide  
Concen: 3.531 ug/l  
RT: 4.303 min Scan# 405  
Delta R.T. -0.000 min  
Lab File: VD069898.D  
Acq: 28 Jul 2021 19:44

Instrument :  
MSVOA\_D  
ClientSampled :

Tgt Ion:142 Resp: 632

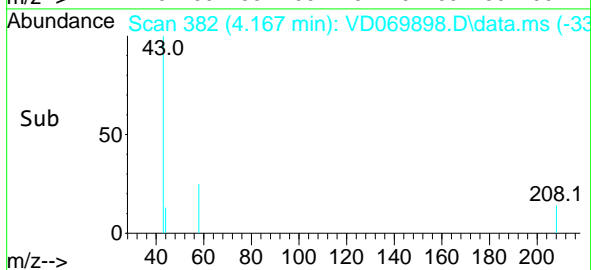
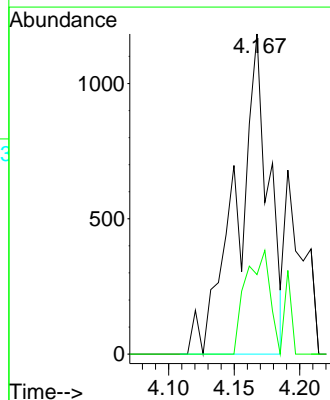
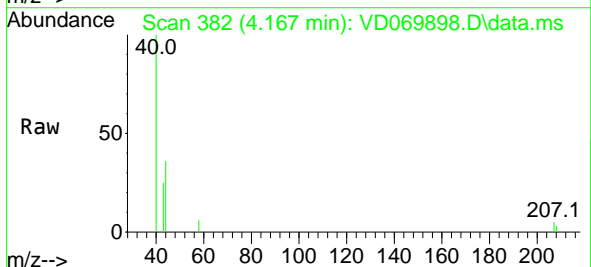
Ion	Ratio	Lower	Upper
142	100		
127	47.5	35.7	53.5
141	0.0	12.0	18.0#

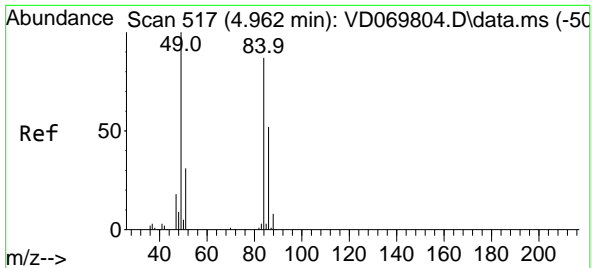


#16  
Acetone  
Concen: 1.397 ug/l  
RT: 4.167 min Scan# 382  
Delta R.T. 0.006 min  
Lab File: VD069898.D  
Acq: 28 Jul 2021 19:44

Tgt Ion: 43 Resp: 1992

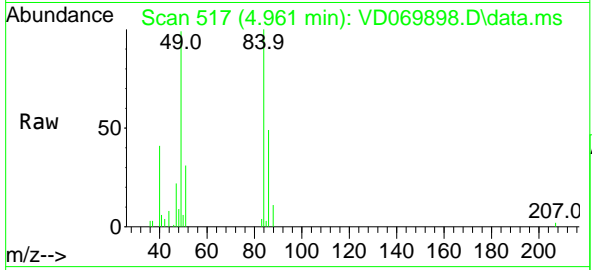
Ion	Ratio	Lower	Upper
43	100		
58	24.9	29.4	44.0#





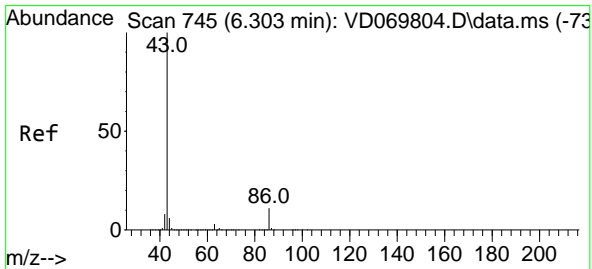
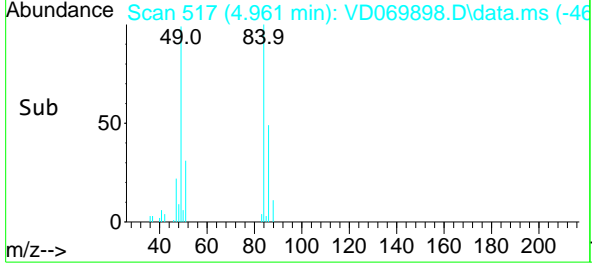
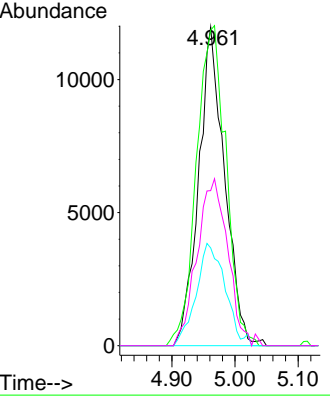
#20  
 Methylene Chloride  
 Concen: Below Cal  
 RT: 4.961 min Scan# 517  
 Delta R.T. -0.001 min  
 Lab File: VD069898.D  
 Acq: 28 Jul 2021 19:44

Instrument :  
 MSVOA\_D  
 ClientSampled :

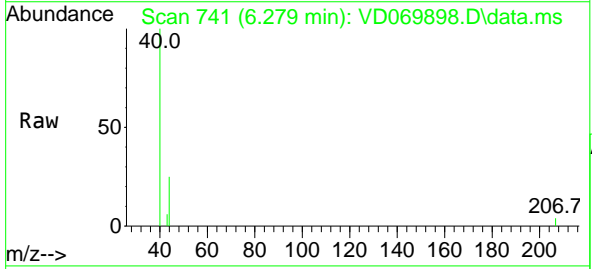


Tgt Ion: 84 Resp: 34248

Ion	Ratio	Lower	Upper
84	100		
49	99.0	92.4	138.6
51	30.7	28.5	42.7
86	48.7	48.2	72.4

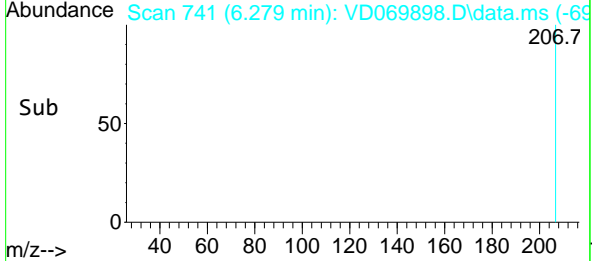
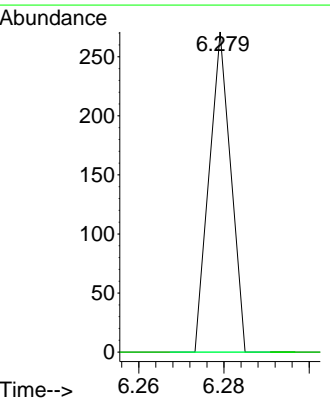


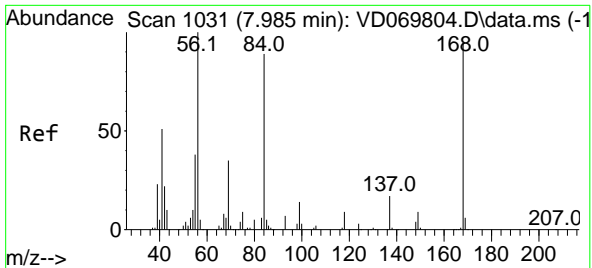
#23  
 Vinyl Acetate  
 Concen: 20.356 ug/l  
 RT: 6.279 min Scan# 741  
 Delta R.T. -0.024 min  
 Lab File: VD069898.D  
 Acq: 28 Jul 2021 19:44



Tgt Ion: 43 Resp: 96

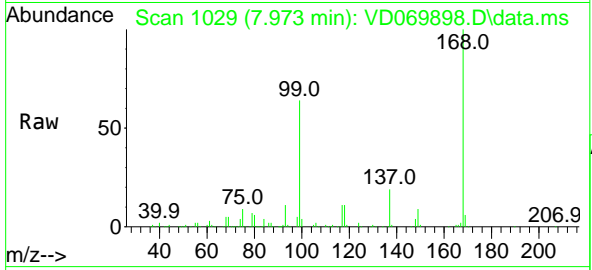
Ion	Ratio	Lower	Upper
43	100		
86	0.0	8.6	13.0#





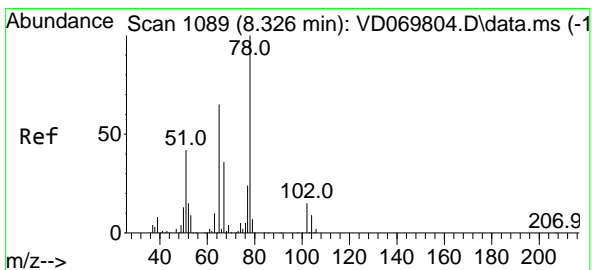
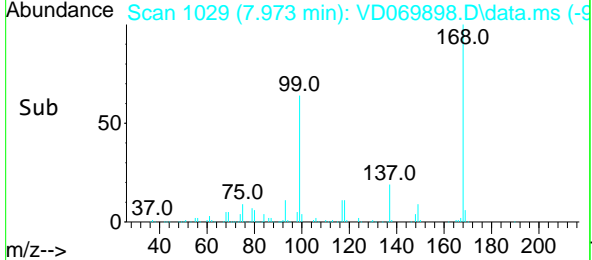
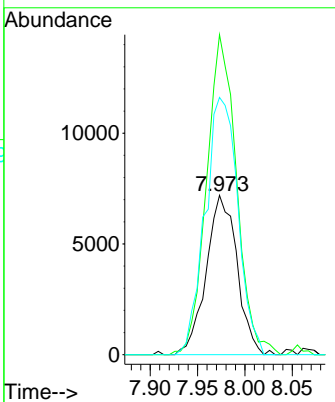
#31  
 Cyclohexane  
 Concen: 1.057 ug/l  
 RT: 7.973 min Scan# 1029  
 Delta R.T. -0.012 min  
 Lab File: VD069898.D  
 Acq: 28 Jul 2021 19:44

Instrument :  
 MSVOA\_D  
 ClientSampled :

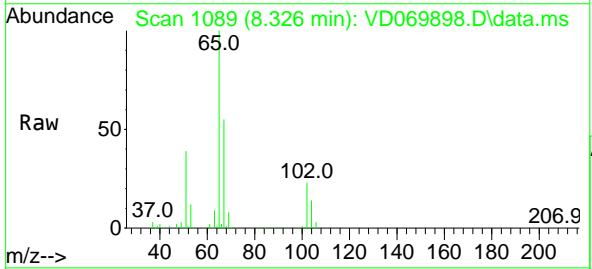


Tgt Ion: 56 Resp: 16300

Ion	Ratio	Lower	Upper
56	100		
69	198.7	27.9	41.9#
84	161.5	71.4	107.2#

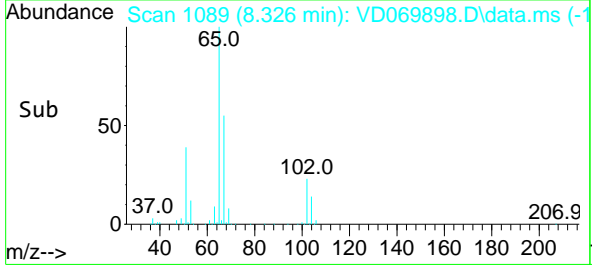
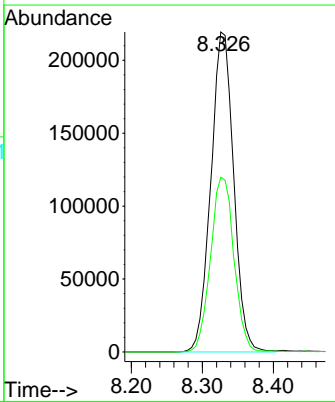


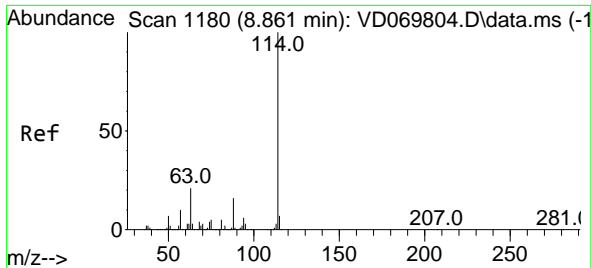
#33  
 1,2-Dichloroethane-d4  
 Concen: 61.819 ug/l  
 RT: 8.326 min Scan# 1089  
 Delta R.T. -0.000 min  
 Lab File: VD069898.D  
 Acq: 28 Jul 2021 19:44



Tgt Ion: 65 Resp: 487984

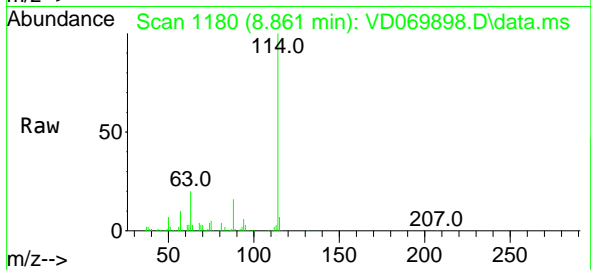
Ion	Ratio	Lower	Upper
65	100		
67	56.3	0.0	111.2





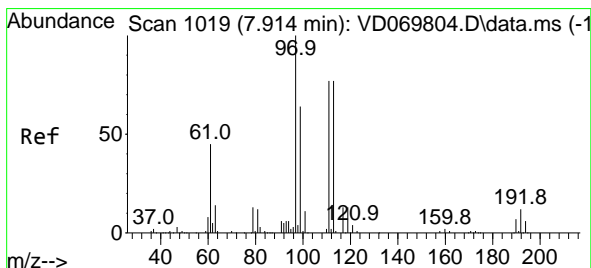
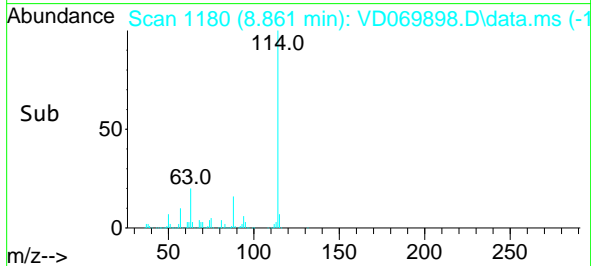
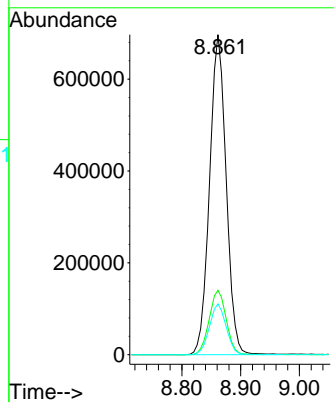
#34  
 1,4-Difluorobenzene  
 Concen: 50.000 ug/l  
 RT: 8.861 min Scan# 1180  
 Delta R.T. 0.000 min  
 Lab File: VD069898.D  
 Acq: 28 Jul 2021 19:44

Instrument :  
 MSVOA\_D  
 ClientSampled :

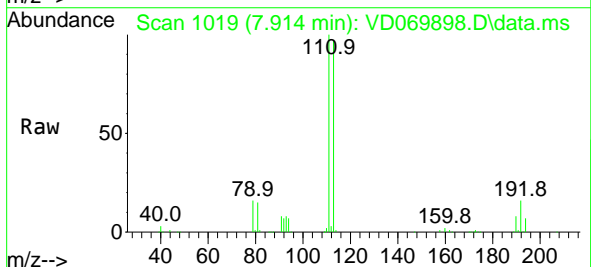


Tgt Ion:114 Resp: 1365505

Ion	Ratio	Lower	Upper
114	100		
63	20.2	0.0	41.6
88	15.9	0.0	31.4

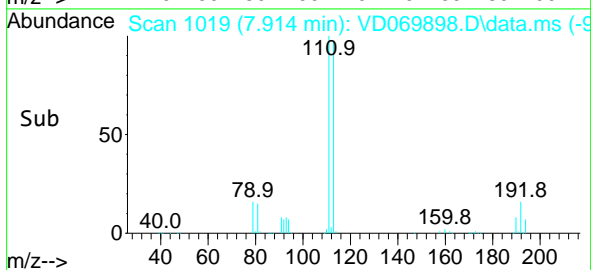
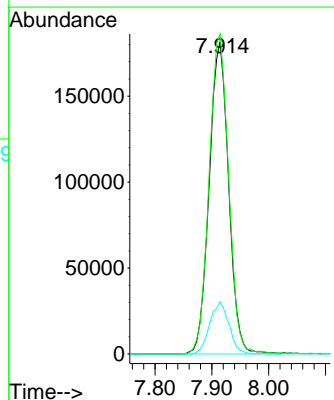


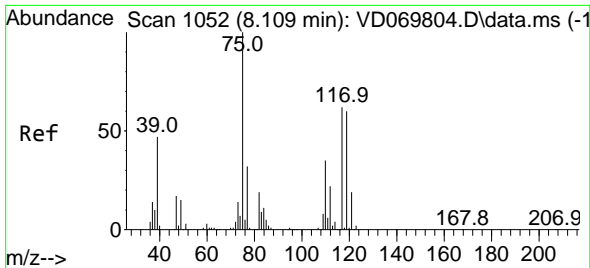
#35  
 Dibromofluoromethane  
 Concen: 49.892 ug/l  
 RT: 7.914 min Scan# 1019  
 Delta R.T. -0.000 min  
 Lab File: VD069898.D  
 Acq: 28 Jul 2021 19:44



Tgt Ion:113 Resp: 429478

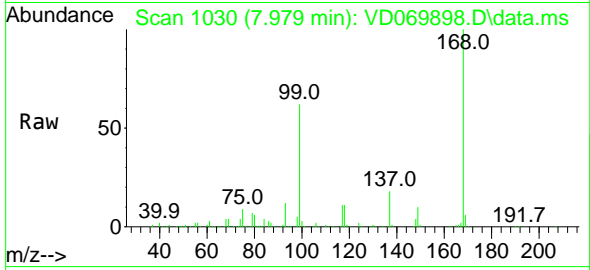
Ion	Ratio	Lower	Upper
113	100		
111	103.1	80.5	120.7
192	16.6	12.6	19.0



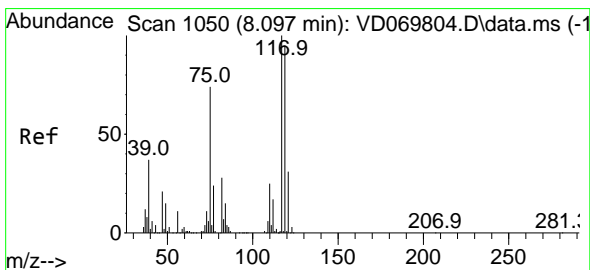
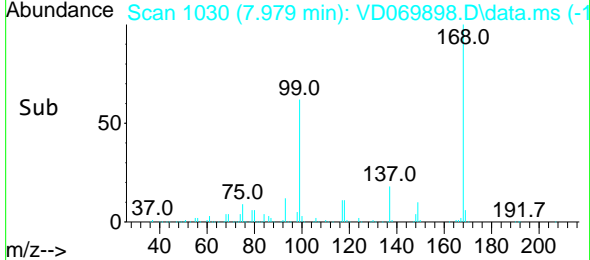
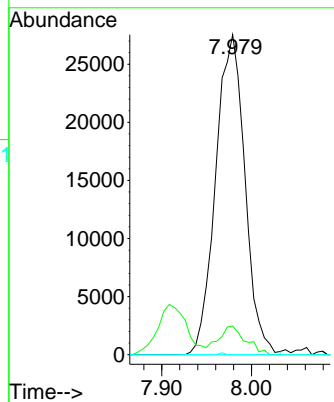


#36  
 1,1-Dichloropropene  
 Concen: 4.225 ug/l  
 RT: 7.979 min Scan# 1030  
 Delta R.T. -0.130 min  
 Lab File: VD069898.D  
 Acq: 28 Jul 2021 19:44

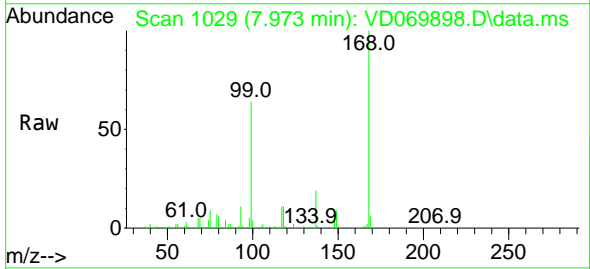
Instrument :  
 MSVOA\_D  
 ClientSampled :



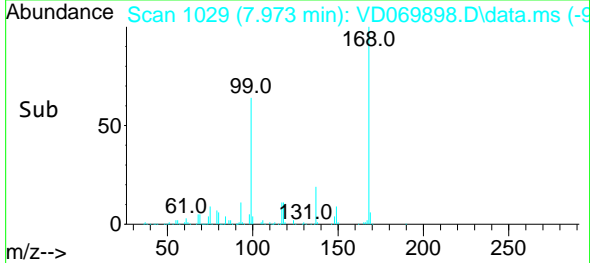
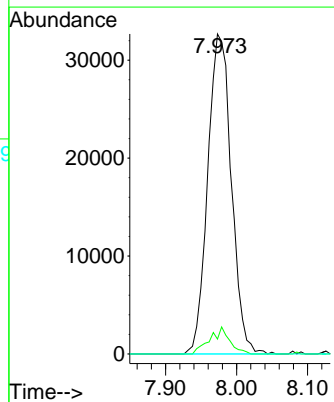
Tgt Ion: 75 Resp: 62256  
 Ion Ratio Lower Upper  
 75 100  
 110 8.3 16.9 50.7#  
 77 0.1 24.9 37.3#



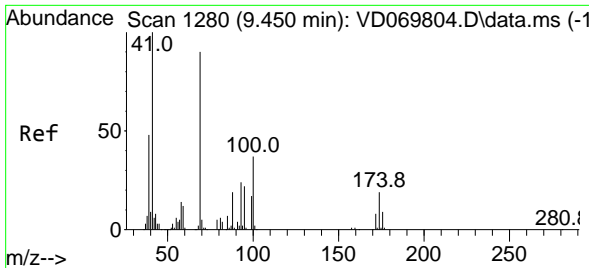
#38  
 Carbon Tetrachloride  
 Concen: 5.610 ug/l  
 RT: 7.973 min Scan# 1029  
 Delta R.T. -0.124 min  
 Lab File: VD069898.D  
 Acq: 28 Jul 2021 19:44



Tgt Ion: 117 Resp: 75518  
 Ion Ratio Lower Upper  
 117 100  
 119 4.7 76.2 114.2#  
 121 0.0 24.5 36.7#





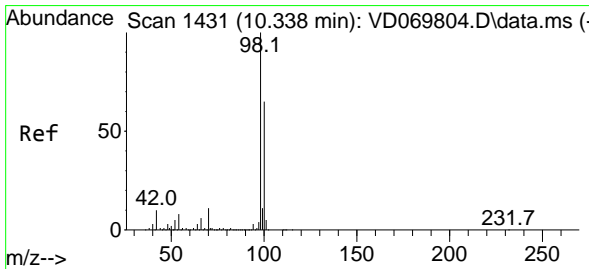
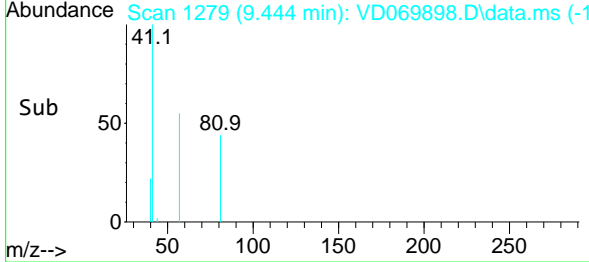
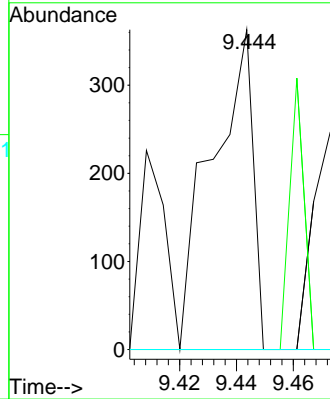
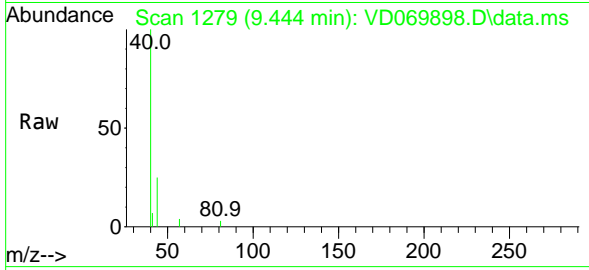


#48  
 Methyl methacrylate  
 Concen: 2.814 ug/l  
 RT: 9.444 min Scan# 1279  
 Delta R.T. -0.006 min  
 Lab File: VD069898.D  
 Acq: 28 Jul 2021 19:44

Instrument :  
 MSVOA\_D  
 ClientSampled :

Tgt Ion: 41 Resp: 365

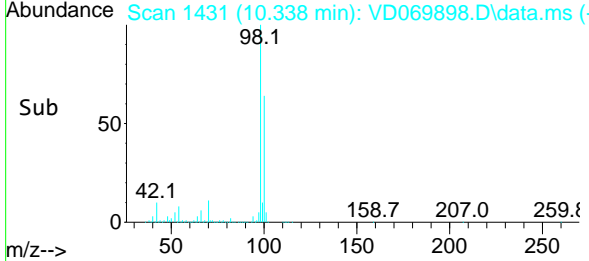
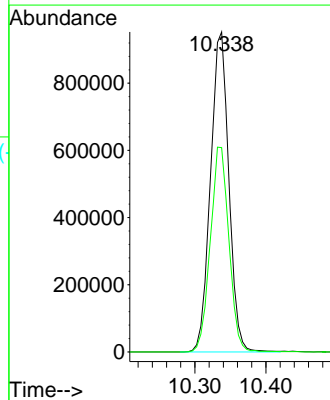
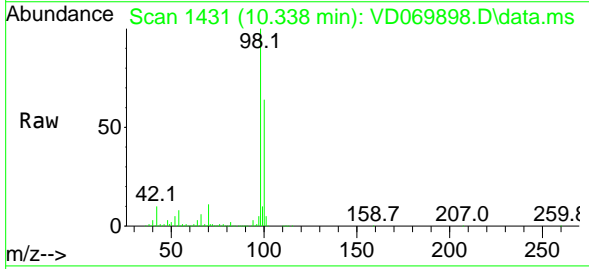
Ion	Ratio	Lower	Upper
41	100		
69	29.9	73.4	110.2#
39	0.0	36.6	55.0#

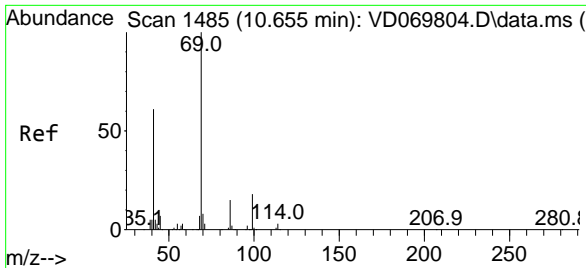


#50  
 Toluene-d8  
 Concen: 51.327 ug/l  
 RT: 10.338 min Scan# 1431  
 Delta R.T. -0.000 min  
 Lab File: VD069898.D  
 Acq: 28 Jul 2021 19:44

Tgt Ion: 98 Resp: 1703664

Ion	Ratio	Lower	Upper
98	100		
100	65.1	51.9	77.9



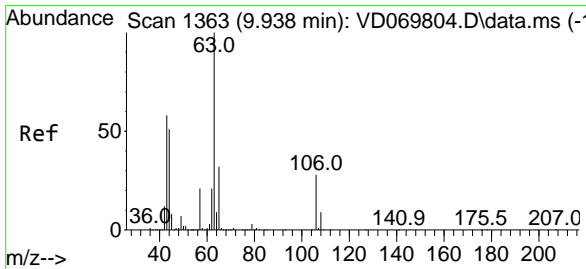
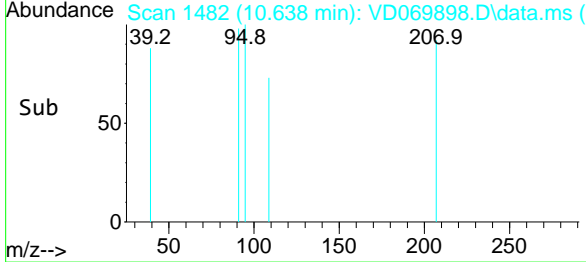
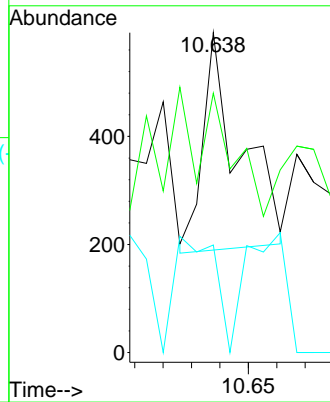
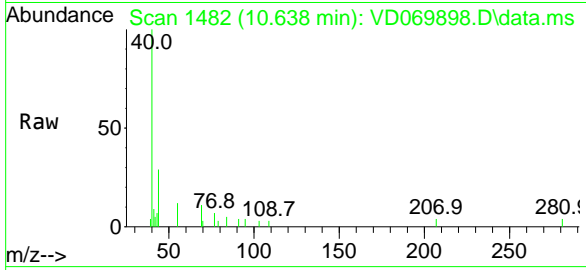


#56  
 Ethyl methacrylate  
 Concen: 3.931 ug/l  
 RT: 10.638 min Scan# 1482  
 Delta R.T. -0.017 min  
 Lab File: VD069898.D  
 Acq: 28 Jul 2021 19:44

Instrument :  
 MSVOA\_D  
 ClientSampled :

Tgt Ion: 69 Resp: 362

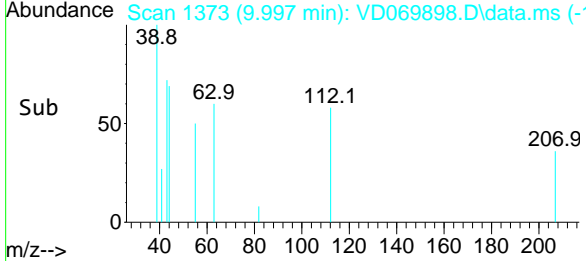
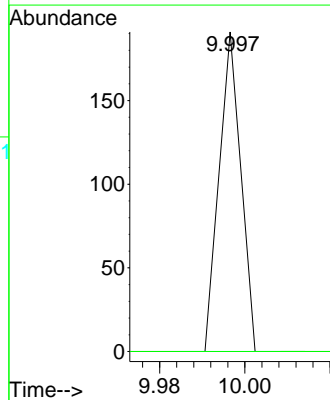
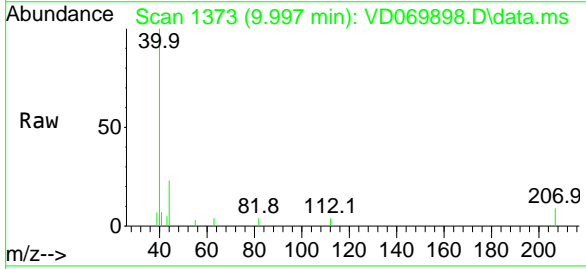
Ion	Ratio	Lower	Upper
69	100		
41	85.6	50.2	75.2#
39	58.6	22.0	33.0#

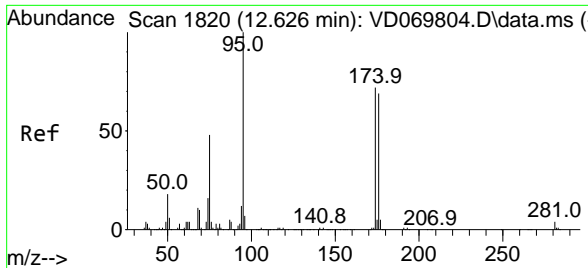


#58  
 2-Chloroethyl Vinyl ether  
 Concen: 20.885 ug/l  
 RT: 9.997 min Scan# 1373  
 Delta R.T. 0.059 min  
 Lab File: VD069898.D  
 Acq: 28 Jul 2021 19:44

Tgt Ion: 63 Resp: 67

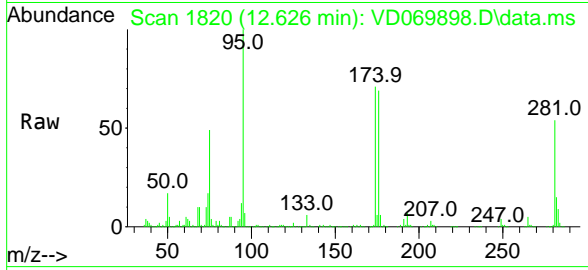
Ion	Ratio	Lower	Upper
63	100		
106	0.0	21.8	32.6#



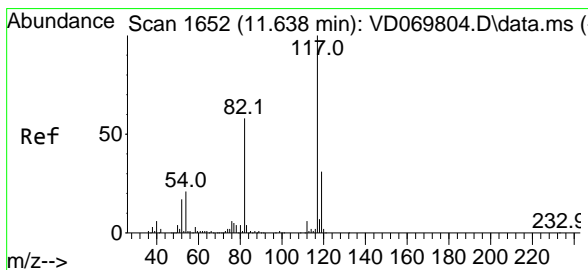
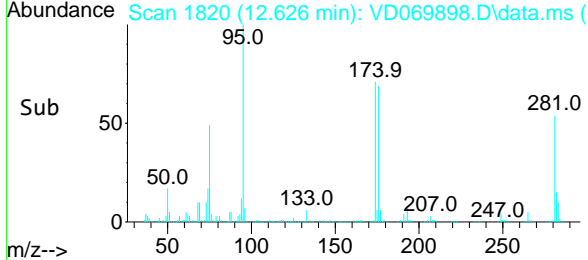
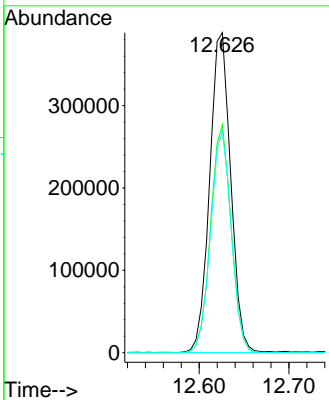


#62  
 4-Bromofluorobenzene  
 Concen: 56.924 ug/l  
 RT: 12.626 min Scan# 1820  
 Delta R.T. -0.000 min  
 Lab File: VD069898.D  
 Acq: 28 Jul 2021 19:44

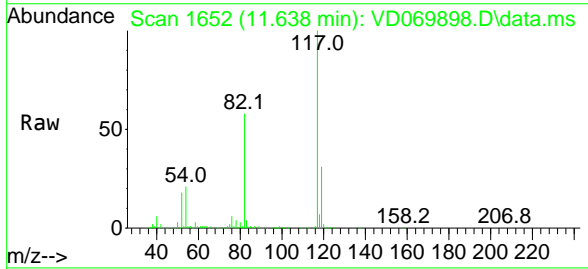
Instrument :  
 MSVOA\_D  
 ClientSampled :



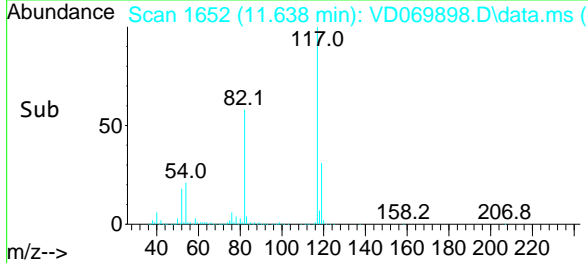
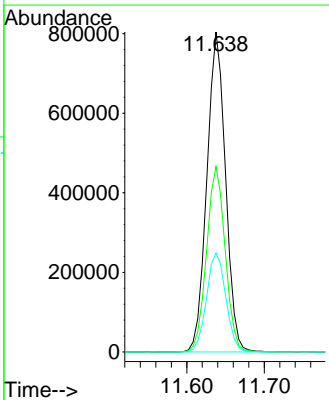
Tgt Ion: 95 Resp: 631462  
 Ion Ratio Lower Upper  
 95 100  
 174 69.8 0.0 142.6  
 176 68.2 0.0 134.2

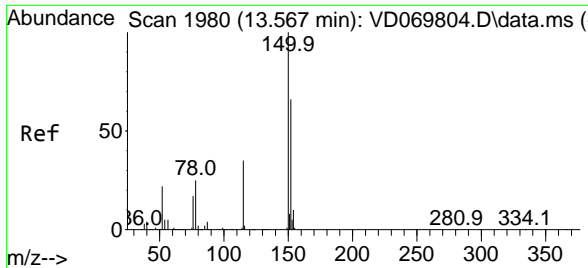


#63  
 Chlorobenzene-d5  
 Concen: 50.000 ug/l  
 RT: 11.638 min Scan# 1652  
 Delta R.T. -0.000 min  
 Lab File: VD069898.D  
 Acq: 28 Jul 2021 19:44



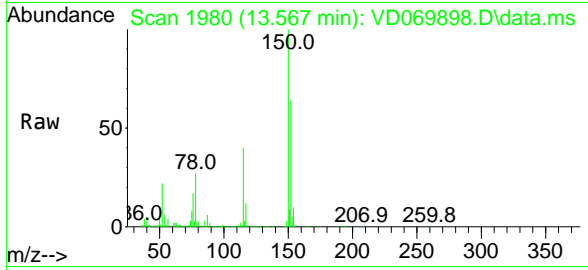
Tgt Ion: 117 Resp: 1343450  
 Ion Ratio Lower Upper  
 117 100  
 82 57.9 46.3 69.5  
 119 30.9 24.7 37.1



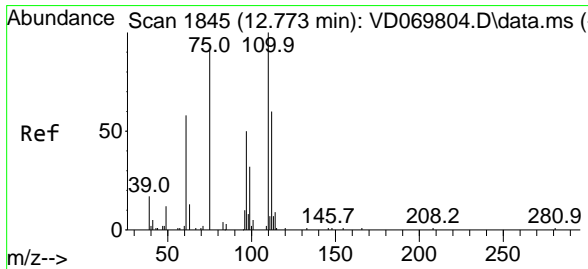
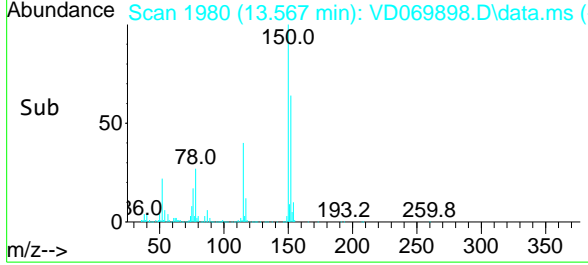
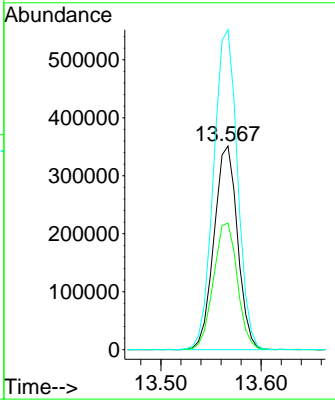


#72  
 1,4-Dichlorobenzene-d4  
 Concen: 50.000 ug/l  
 RT: 13.567 min Scan# 1980  
 Delta R.T. -0.000 min  
 Lab File: VD069898.D  
 Acq: 28 Jul 2021 19:44

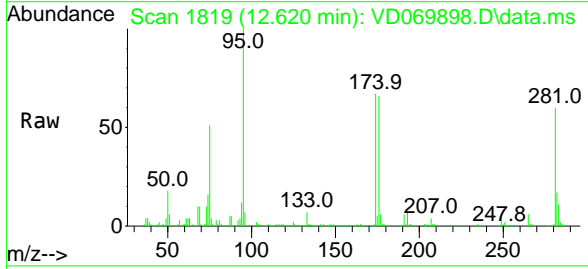
Instrument :  
 MSVOA\_D  
 ClientSampled :



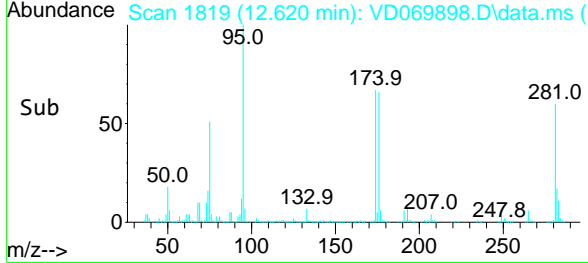
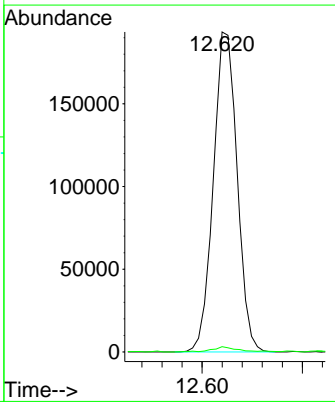
Tgt Ion:152 Resp: 571529  
 Ion Ratio Lower Upper  
 152 100  
 115 63.3 31.1 93.3  
 150 159.8 0.0 343.0

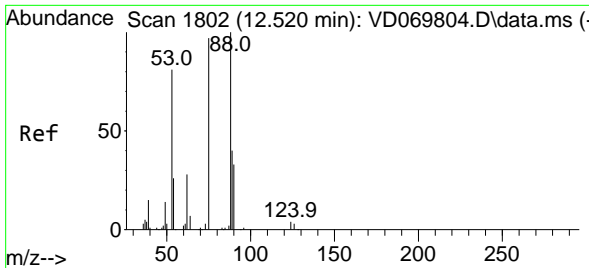


#76  
 1,2,3-Trichloropropane  
 Concen: 52.433 ug/l  
 RT: 12.620 min Scan# 1819  
 Delta R.T. -0.153 min  
 Lab File: VD069898.D  
 Acq: 28 Jul 2021 19:44



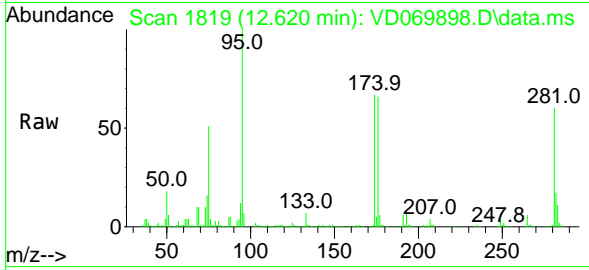
Tgt Ion: 75 Resp: 318524  
 Ion Ratio Lower Upper  
 75 100  
 77 1.9 181.5 544.5#



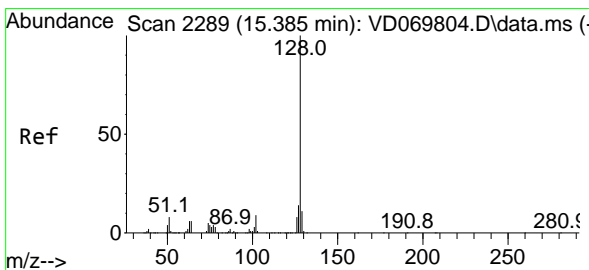
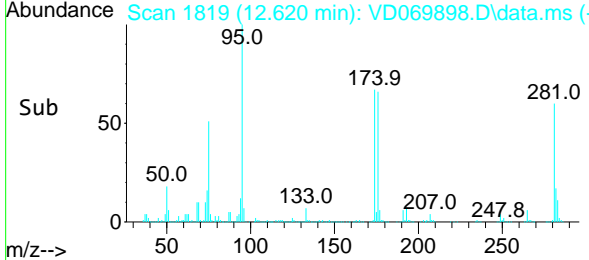
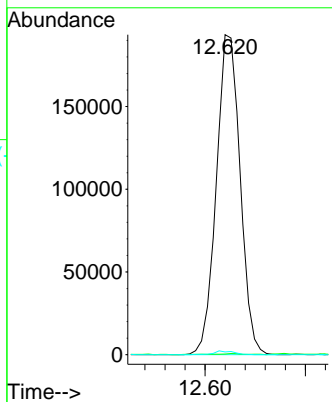


#81  
 trans-1,4-Dichloro-2-butene  
 Concen: 159.066 ug/l  
 RT: 12.620 min Scan# 1819  
 Delta R.T. 0.100 min  
 Lab File: VD069898.D  
 Acq: 28 Jul 2021 19:44

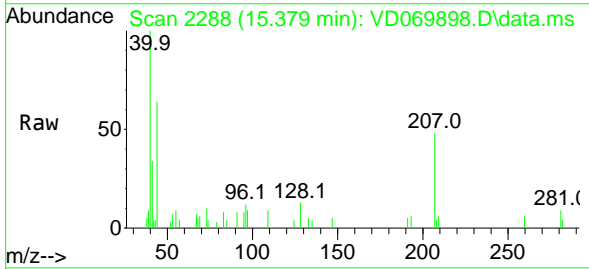
Instrument :  
 MSVOA\_D  
 ClientSampled :



Tgt Ion: 75 Resp: 318524  
 Ion Ratio Lower Upper  
 75 100  
 53 0.4 67.2 100.8#  
 89 1.0 35.8 53.6#



#95  
 Naphthalene  
 Concen: 5.018 ug/l  
 RT: 15.379 min Scan# 2288  
 Delta R.T. -0.006 min  
 Lab File: VD069898.D  
 Acq: 28 Jul 2021 19:44



Tgt Ion: 128 Resp: 409  
 Ion Ratio Lower Upper  
 128 100  
 127 0.0 10.6 16.0#  
 129 0.0 8.6 12.8#

