

Data Path : Z:\voasrv\HPCHEM1\MSVOA_D\Data\VD072821\
 Data File : VD069885.D
 Acq On : 28 Jul 2021 13:31
 Operator : VA/SY
 Sample : M3204-03
 Misc : 5.07G/5.00ml/MSVOA_D/SOIL
 ALS Vial : 8 Sample Multiplier: 1

Instrument :
 MSVOA_D
 ClientSampleId :
 EO-03-072721

Quant Time: Jul 29 03:59:14 2021
 Quant Method : Z:\voasrv\HPCHEM1\MSVOA_D\Method\82D072221S.M
 Quant Title : SW846 8260
 QLast Update : Fri Jul 23 04:51:13 2021
 Response via : Initial Calibration

Compound	R.T.	QIon	Response	Conc	Units	Dev(Min)

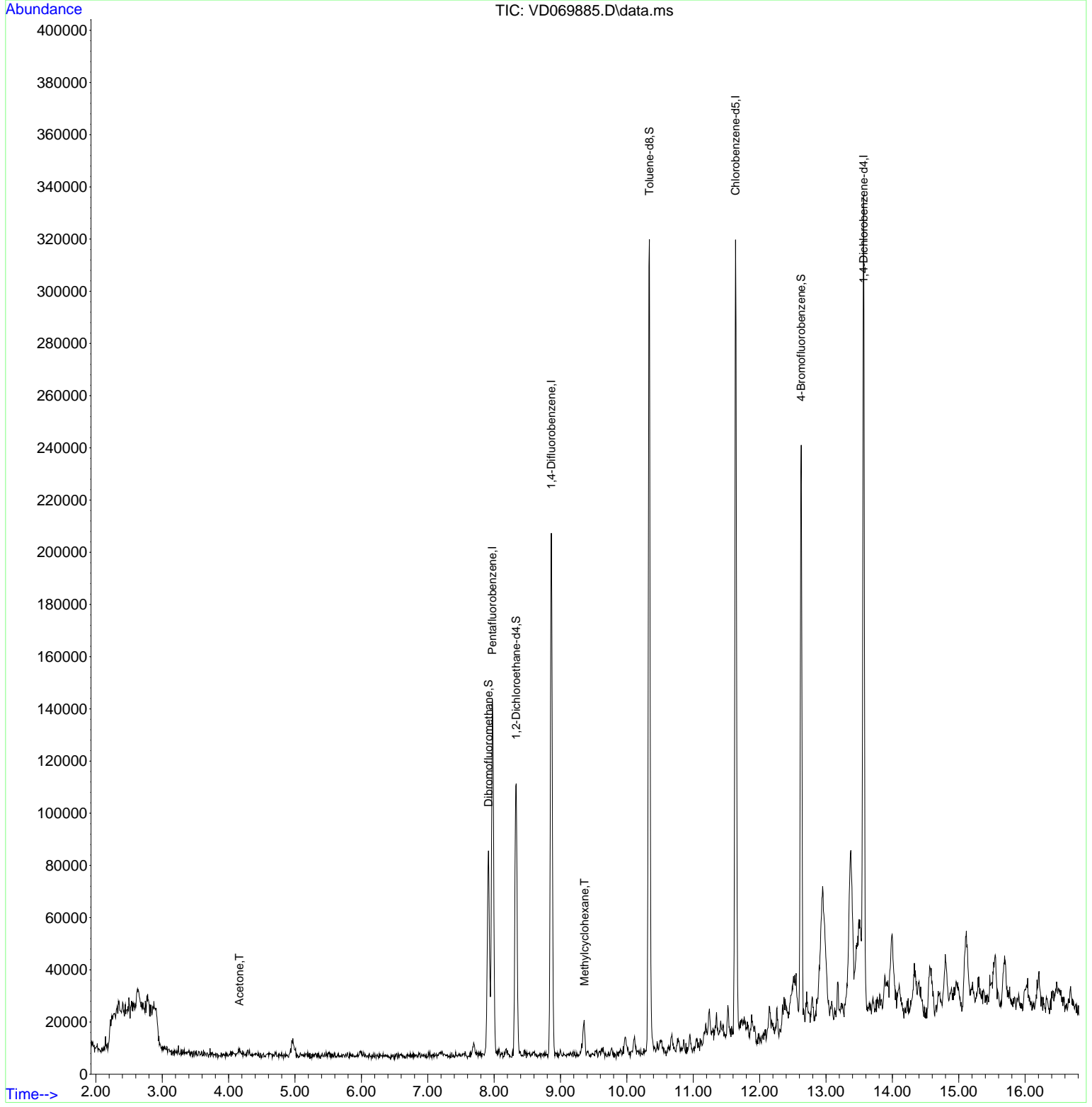
Internal Standards						
1) Pentafluorobenzene	7.973	168	95194	50.000	ug/l	0.00
34) 1,4-Difluorobenzene	8.861	114	171699	50.000	ug/l	0.00
63) Chlorobenzene-d5	11.638	117	177174	50.000	ug/l	0.00
72) 1,4-Dichlorobenzene-d4	13.567	152	86125	50.000	ug/l	0.00
System Monitoring Compounds						
33) 1,2-Dichloroethane-d4	8.332	65	87770	80.169	ug/l	0.00
Spiked Amount	50.000	Range	50 - 163	Recovery	=	160.340%
35) Dibromofluoromethane	7.914	113	55509	51.284	ug/l	0.00
Spiked Amount	50.000	Range	54 - 147	Recovery	=	102.560%
50) Toluene-d8	10.338	98	211913	50.774	ug/l	0.00
Spiked Amount	50.000	Range	49 - 140	Recovery	=	101.540%
62) 4-Bromofluorobenzene	12.626	95	77869	55.826	ug/l	0.00
Spiked Amount	50.000	Range	25 - 144	Recovery	=	111.660%
Target Compounds						
					Qvalue	
16) Acetone	4.162	43	3644	18.425	ug/l	98
39) Methylcyclohexane	9.361	83	4142	1.952	ug/l #	83

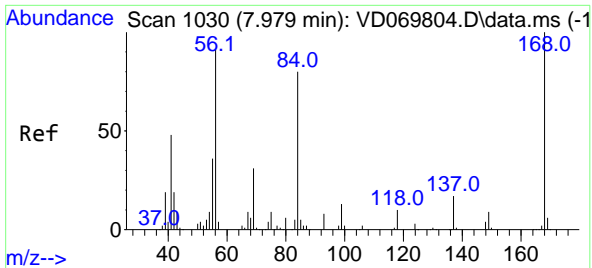
(#) = qualifier out of range (m) = manual integration (+) = signals summed

Data Path : Z:\voasrv\HPCHEM1\MSVOA_D\Data\VD072821\
 Data File : VD069885.D
 Acq On : 28 Jul 2021 13:31
 Operator : VA/SY
 Sample : M3204-03
 Misc : 5.07G/5.00ml/MSVOA_D/SOIL
 ALS Vial : 8 Sample Multiplier: 1

Instrument :
 MSVOA_D
ClientSampled :
 EO-03-072721

Quant Time: Jul 29 03:59:14 2021
 Quant Method : Z:\voasrv\HPCHEM1\MSVOA_D\Method\82D072221S.M
 Quant Title : SW846 8260
 QLast Update : Fri Jul 23 04:51:13 2021
 Response via : Initial Calibration

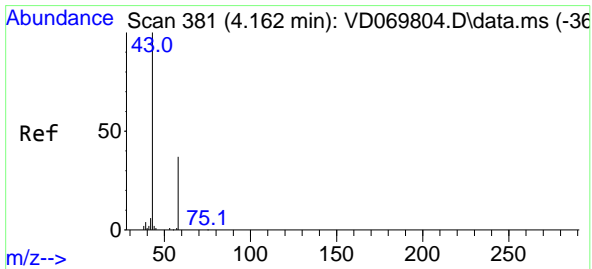
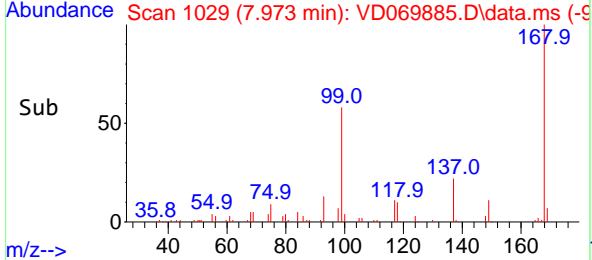
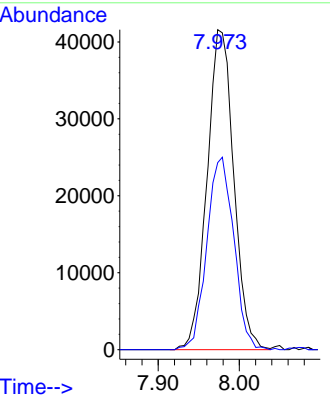
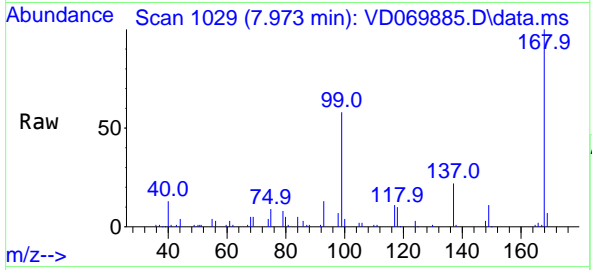




#1
 Pentafluorobenzene
 Concen: 50.000 ug/l
 RT: 7.973 min Scan# 1029
 Delta R.T. -0.006 min
 Lab File: VD069885.D
 Acq: 28 Jul 2021 13:31

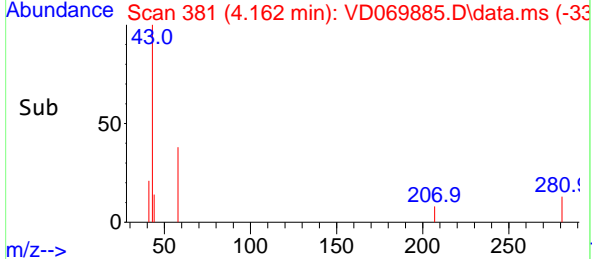
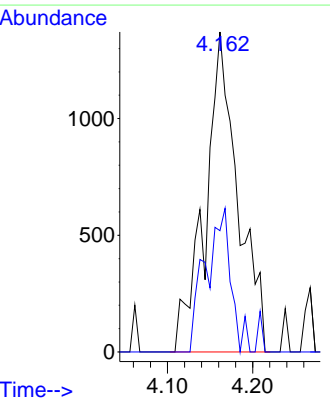
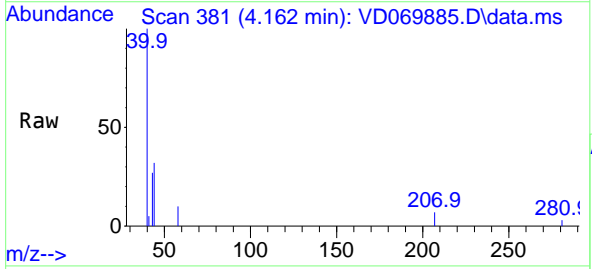
Instrument :
 MSVOA_D
 ClientSampled :
 EO-03-072721

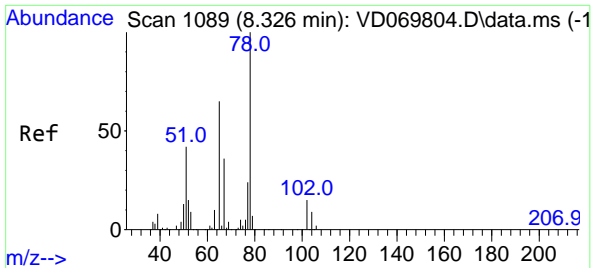
Tgt Ion:168 Resp: 95194
 Ion Ratio Lower Upper
 168 100
 99 58.4 51.1 76.7



#16
 Acetone
 Concen: 18.425 ug/l
 RT: 4.162 min Scan# 381
 Delta R.T. -0.000 min
 Lab File: VD069885.D
 Acq: 28 Jul 2021 13:31

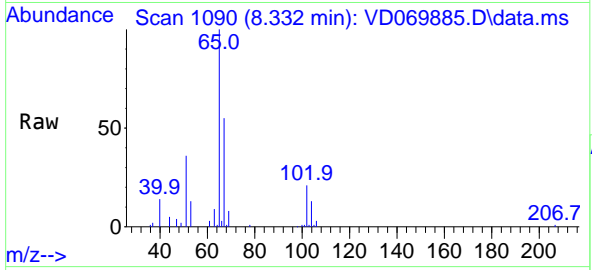
Tgt Ion: 43 Resp: 3644
 Ion Ratio Lower Upper
 43 100
 58 37.9 29.4 44.0



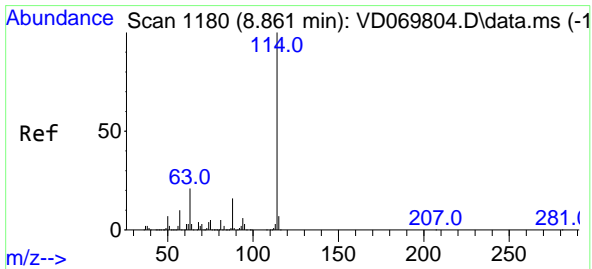
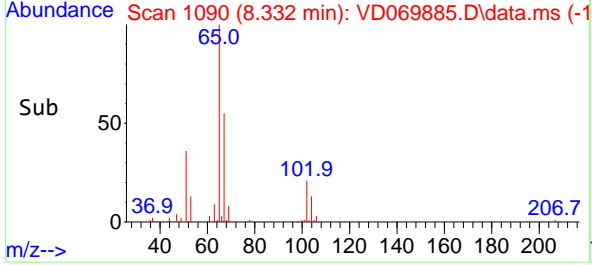
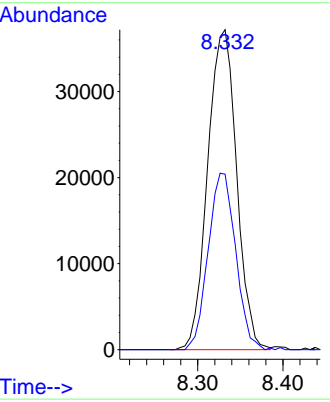


#33
 1,2-Dichloroethane-d4
 Concen: 80.169 ug/l
 RT: 8.332 min Scan# 1090
 Delta R.T. 0.006 min
 Lab File: VD069885.D
 Acq: 28 Jul 2021 13:31

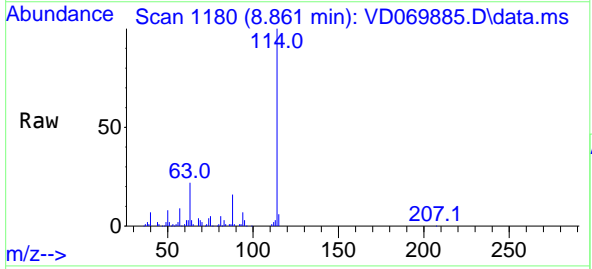
Instrument :
 MSVOA_D
ClientSampled :
 EO-03-072721



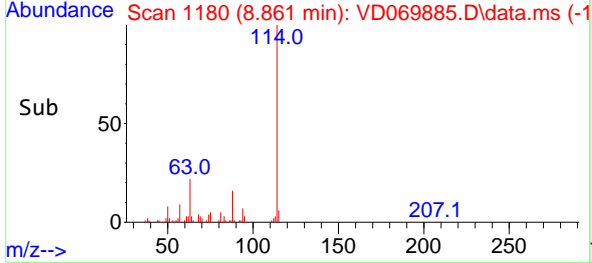
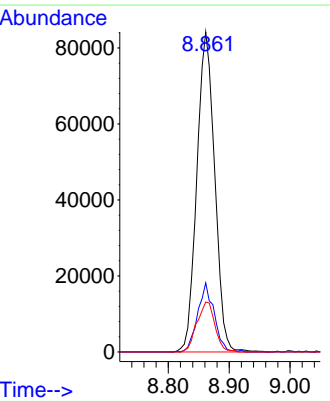
Tgt Ion: 65 Resp: 87770
 Ion Ratio Lower Upper
 65 100
 67 52.4 0.0 111.2

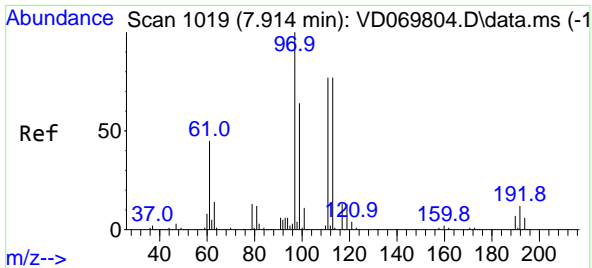


#34
 1,4-Difluorobenzene
 Concen: 50.000 ug/l
 RT: 8.861 min Scan# 1180
 Delta R.T. 0.000 min
 Lab File: VD069885.D
 Acq: 28 Jul 2021 13:31



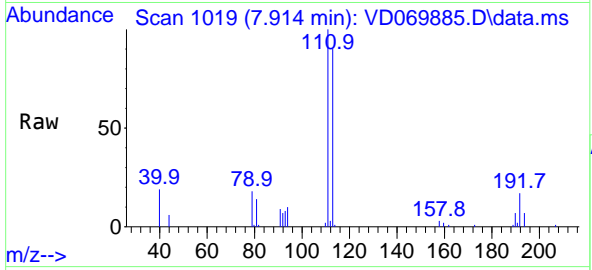
Tgt Ion: 114 Resp: 171699
 Ion Ratio Lower Upper
 114 100
 63 21.6 0.0 41.6
 88 15.6 0.0 31.4





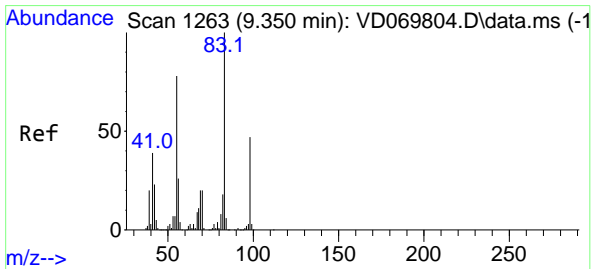
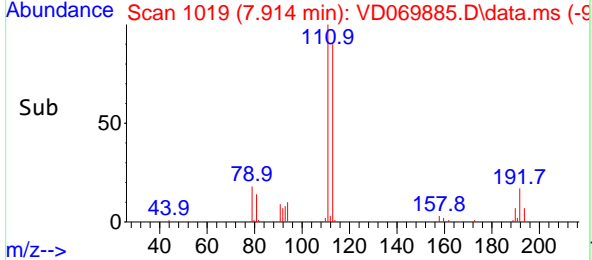
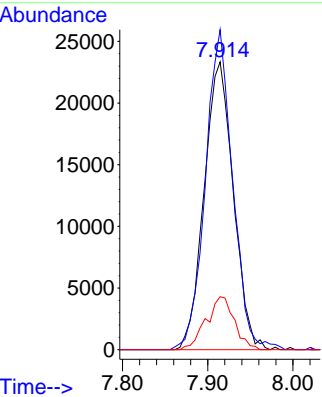
#35
 Dibromofluoromethane
 Concen: 51.284 ug/l
 RT: 7.914 min Scan# 1019
 Delta R.T. -0.000 min
 Lab File: VD069885.D
 Acq: 28 Jul 2021 13:31

Instrument : MSVOA_D
 ClientSampled : EO-03-072721



Tgt Ion:113 Resp: 55509

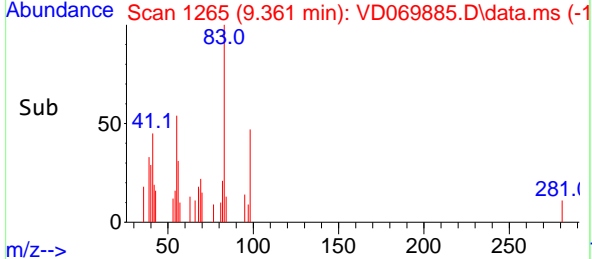
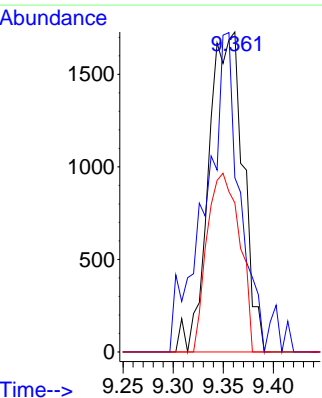
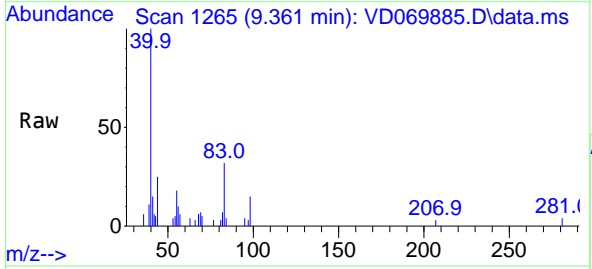
Ion	Ratio	Lower	Upper
113	100		
111	104.2	80.5	120.7
192	17.7	12.6	19.0

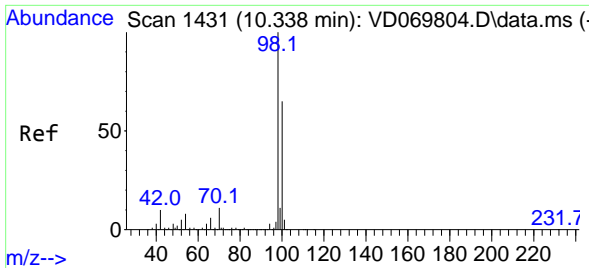


#39
 Methylcyclohexane
 Concen: 1.952 ug/l
 RT: 9.361 min Scan# 1265
 Delta R.T. 0.012 min
 Lab File: VD069885.D
 Acq: 28 Jul 2021 13:31

Tgt Ion: 83 Resp: 4142

Ion	Ratio	Lower	Upper
83	100		
55	54.4	62.2	93.2#
98	46.6	37.8	56.8

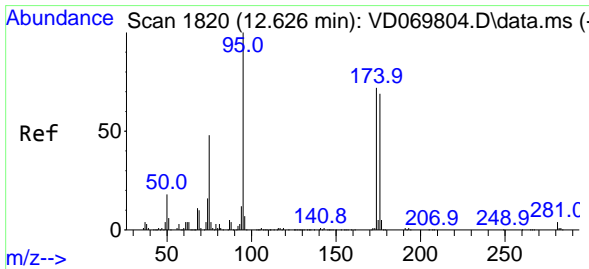
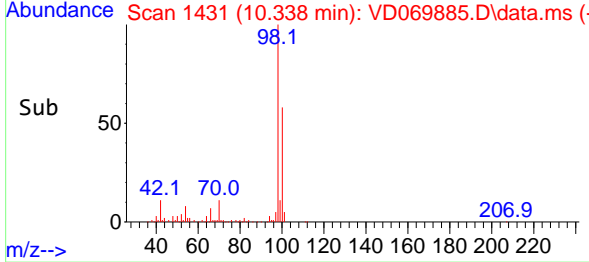
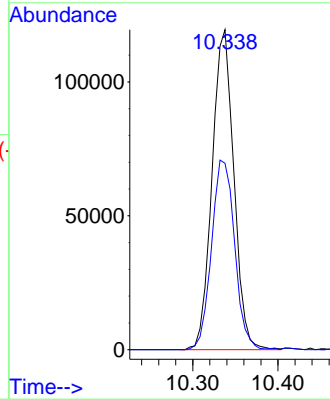
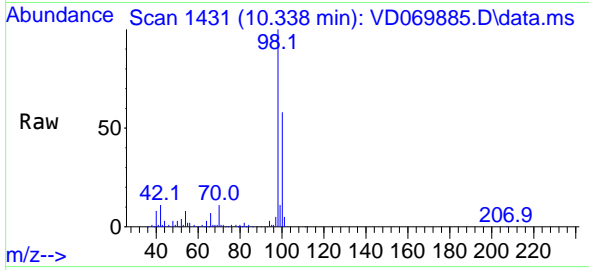




#50
 Toluene-d8
 Concen: 50.774 ug/l
 RT: 10.338 min Scan# 1431
 Delta R.T. -0.000 min
 Lab File: VD069885.D
 Acq: 28 Jul 2021 13:31

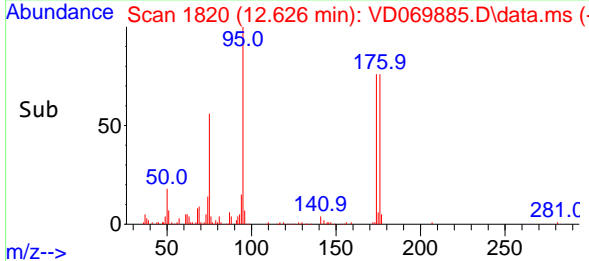
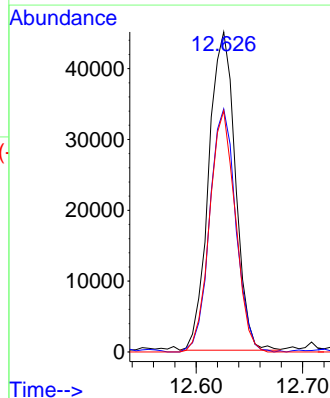
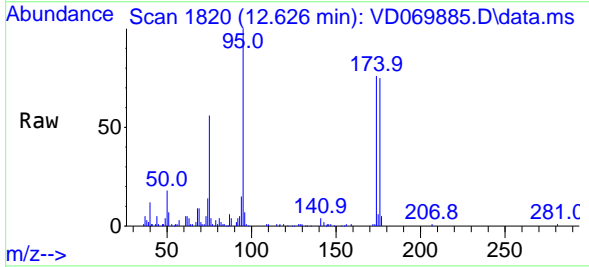
Instrument :
 MSVOA_D
 ClientSampleId :
 EO-03-072721

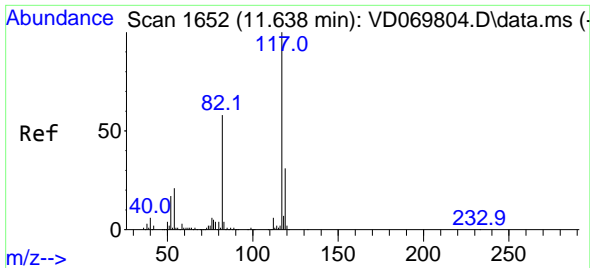
Tgt Ion: 98 Resp: 211913
 Ion Ratio Lower Upper
 98 100
 100 63.1 51.9 77.9



#62
 4-Bromofluorobenzene
 Concen: 55.826 ug/l
 RT: 12.626 min Scan# 1820
 Delta R.T. -0.000 min
 Lab File: VD069885.D
 Acq: 28 Jul 2021 13:31

Tgt Ion: 95 Resp: 77869
 Ion Ratio Lower Upper
 95 100
 174 75.0 0.0 142.6
 176 73.3 0.0 134.2

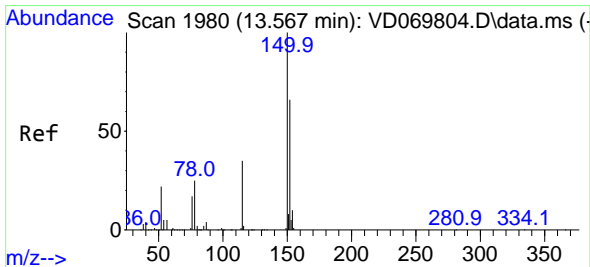
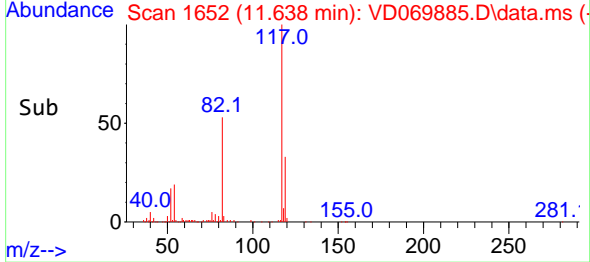
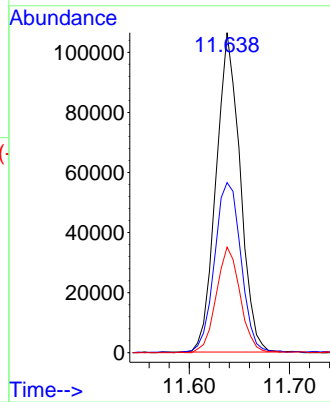
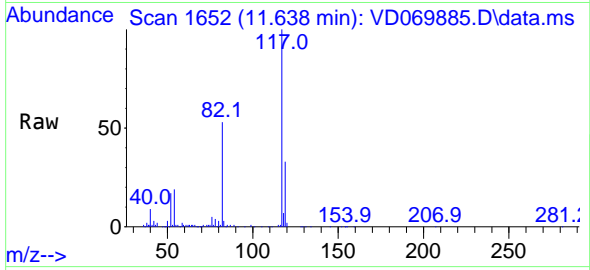




#63
 Chlorobenzene-d5
 Concen: 50.000 ug/l
 RT: 11.638 min Scan# 1652
 Delta R.T. -0.000 min
 Lab File: VD069885.D
 Acq: 28 Jul 2021 13:31

Instrument :
 MSVOA_D
 ClientSampleId :
 EO-03-072721

Tgt Ion	Resp	Lower	Upper
117	177174		
117	100		
82	53.1	46.3	69.5
119	32.9	24.7	37.1



#72
 1,4-Dichlorobenzene-d4
 Concen: 50.000 ug/l
 RT: 13.567 min Scan# 1980
 Delta R.T. -0.000 min
 Lab File: VD069885.D
 Acq: 28 Jul 2021 13:31

Tgt Ion	Resp	Lower	Upper
152	86125		
152	100		
115	61.9	31.1	93.3
150	151.4	0.0	343.0

