

Data Path : Z:\VOASRV\HPCHEM1\MSVOA D\DATA\VD072919\
 Data File : VD063203.D
 Acq On : 29 Jul 2019 17:07
 Operator : VA/AP
 Sample : K4044-03
 Misc : 5.72g/5ml/MSVOA D/SOIL
 ALS Vial : 16 Sample Multiplier: 1

Instrument :
 MSVOA_D
 ClientSampleID :
 TP-6

Quant Time: Jul 30 03:43:56 2019
 Quant Method : Z:\VOASRV\HPCHEM1\MSVOA_D\METHOD\82D072919S.M
 Quant Title : SW846 8260
 QLast Update : Tue Jul 30 03:04:50 2019
 Response via : Initial Calibration

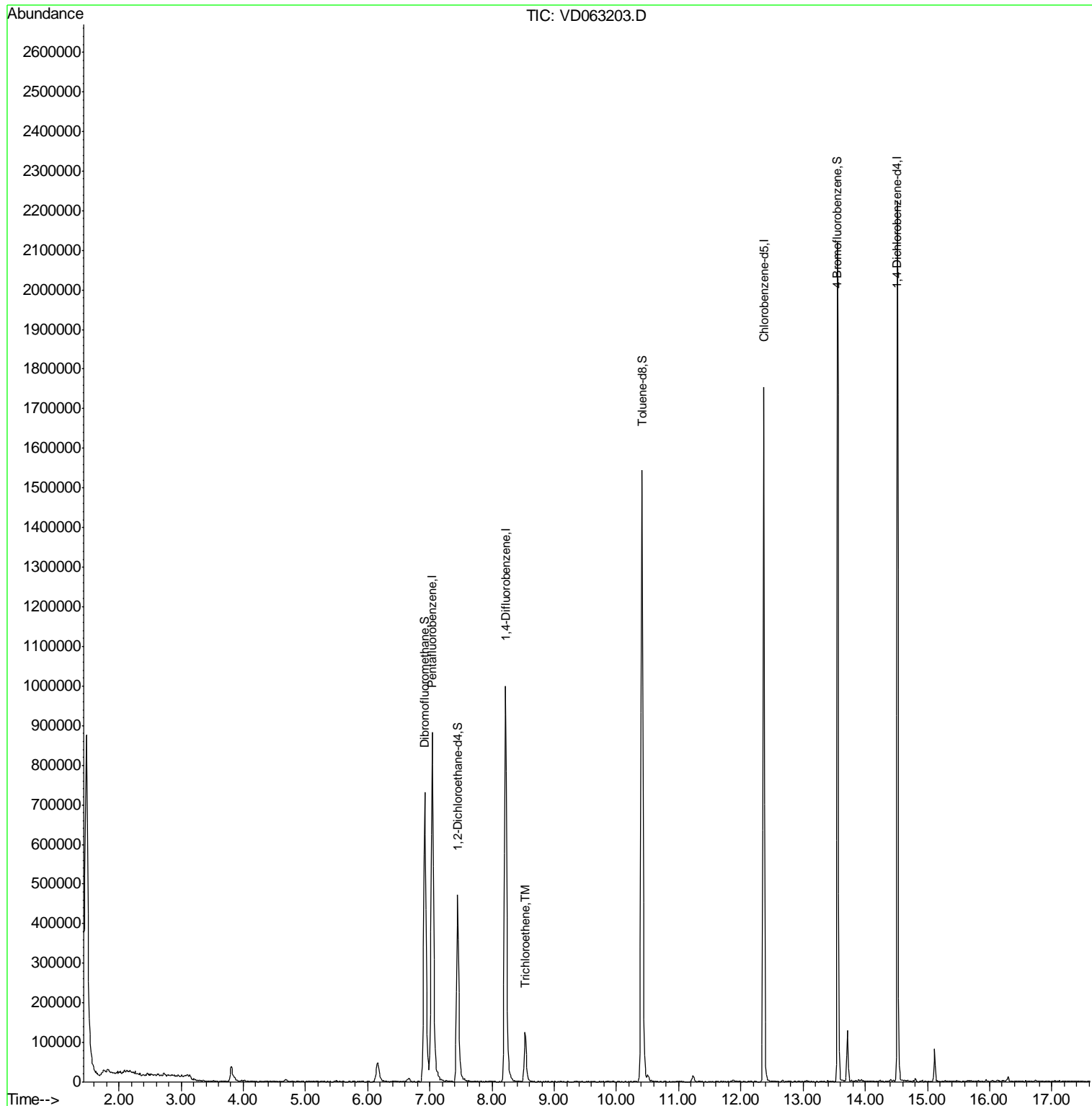
Internal Standards	R.T.	QIon	Response	Conc	Units	Dev(Min)
1) Pentafluorobenzene	7.04	168	843722	50.00	ug/l	0.00
34) 1,4-Difluorobenzene	8.22	114	1149342	50.00	ug/l	0.00
63) Chlorobenzene-d5	12.37	117	975891	50.00	ug/l	0.00
72) 1,4-Dichlorobenzene-d4	14.52	152	479390	50.00	ug/l	0.00
System Monitoring Compounds						
33) 1,2-Dichloroethane-d4	7.45	65	499828	53.39	ug/l	0.00
Spiked Amount	50.000		Recovery	=	106.78%	
35) Dibromofluoromethane	6.92	113	630524	64.25	ug/l	0.00
Spiked Amount	50.000		Recovery	=	128.50%	
50) Toluene-d8	10.41	98	1317018	59.97	ug/l	0.00
Spiked Amount	50.000		Recovery	=	119.94%	
62) 4-Bromofluorobenzene	13.55	95	593404	59.29	ug/l	0.00
Spiked Amount	50.000		Recovery	=	118.58%	
Target Compounds						
44) Trichloroethene	8.54	130	55952	6.281	ug/l	90

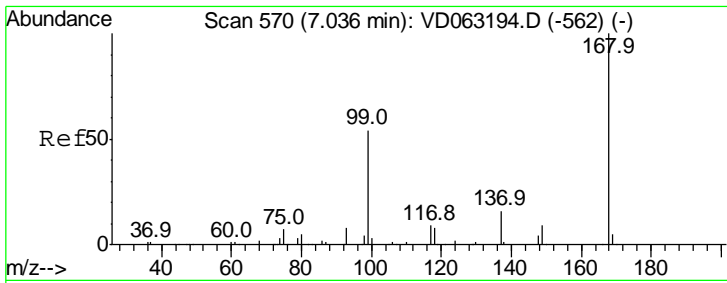
(#) = qualifier out of range (m) = manual integration (+) = signals summed

Data Path : Z:\VOASRV\HPCHEM1\MSVOA D\DATA\VD072919\
 Data File : VD063203.D
 Acq On : 29 Jul 2019 17:07
 Operator : VA/AP
 Sample : K4044-03
 Misc : 5.72α/5ml/MSVOA D/SOIL
 ALS Vial : 16 Sample Multiplier: 1

Instrument :
 MSVOA_D
 ClientSampled :
 TP-6

Quant Time: Jul 30 03:43:56 2019
 Quant Method : Z:\VOASRV\HPCHEM1\MSVOA_D\METHOD\82D072919S.M
 Quant Title : SW846 8260
 QLast Update : Tue Jul 30 03:04:50 2019
 Response via : Initial Calibration

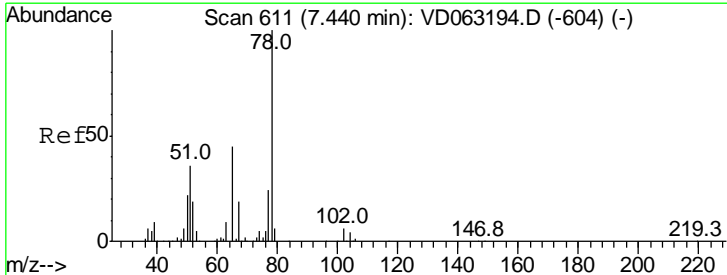
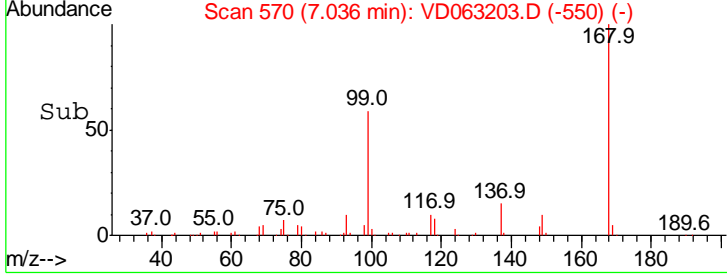
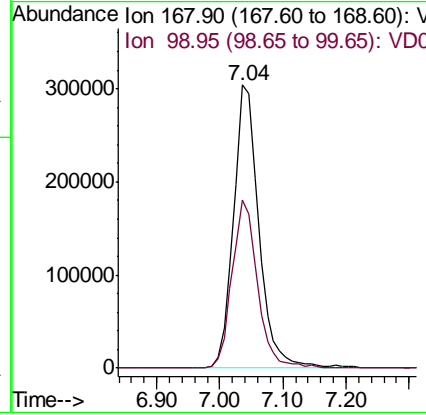
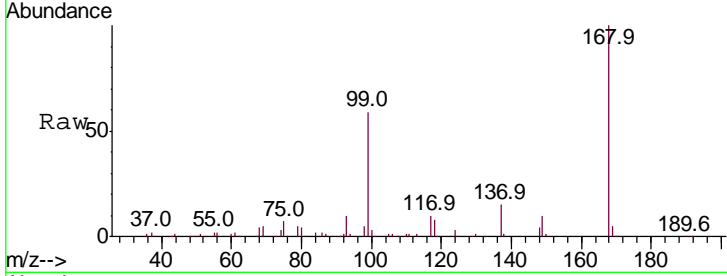




#1
 Pentafluorobenzene
 Concen: 50.000 ug/l
 RT: 7.04 min Scan# 570
 Delta R.T. -0.00 min
 Lab File: VD063203.D
 Acq: 29 Jul 2019 17:07

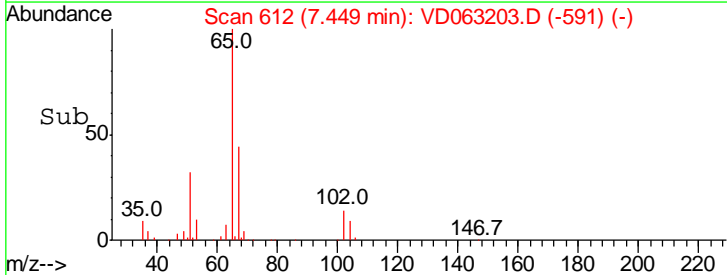
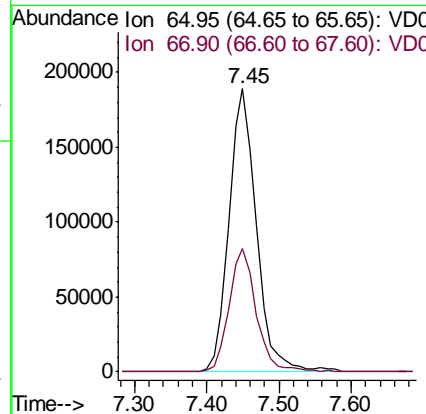
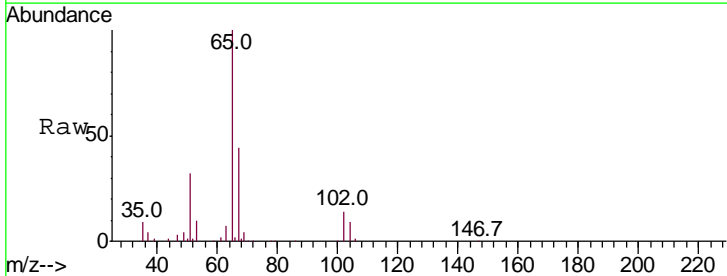
Instrument : MSVOA_D
 ClientSampleID : TP-6

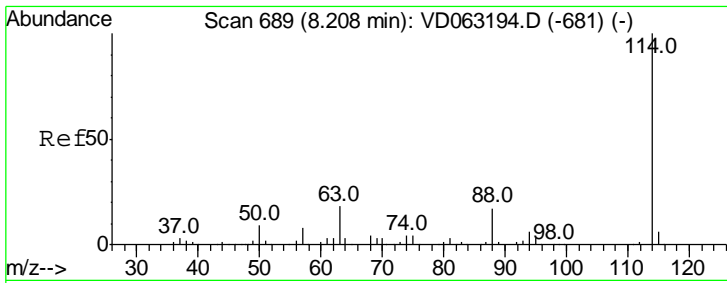
Tgt Ion	Resp	Lower	Upper
168	100		
99	59.3	43.7	65.5



#33
 1,2-Dichloroethane-d4
 Concen: 53.390 ug/l
 RT: 7.45 min Scan# 612
 Delta R.T. 0.01 min
 Lab File: VD063203.D
 Acq: 29 Jul 2019 17:07

Tgt Ion	Resp	Lower	Upper
65	100		
67	43.8	0.0	85.8



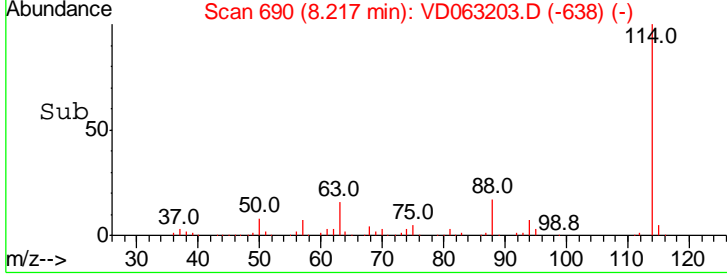
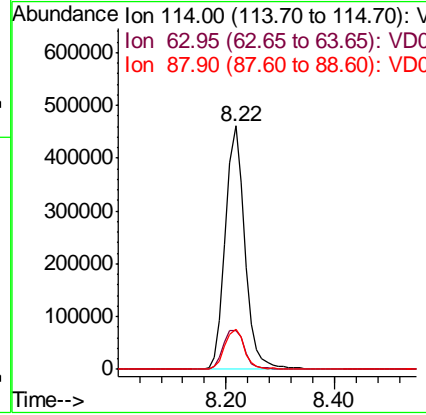
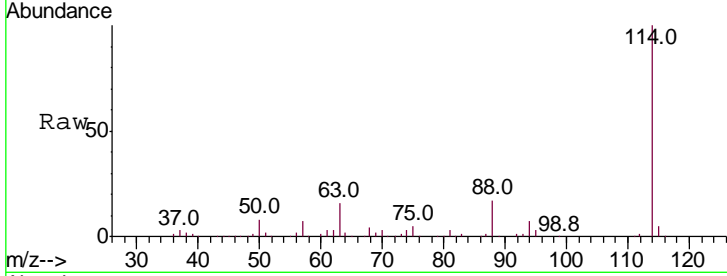


#34
 1,4-Difluorobenzene
 Concen: 50.000 ug/l
 RT: 8.22 min Scan# 690
 Delta R.T. 0.01 min
 Lab File: VD063203.D
 Acq: 29 Jul 2019 17:07

Instrument : MSVOA_D
 ClientSampled : TP-6

Tgt Ion: 114 Resp: 1149342

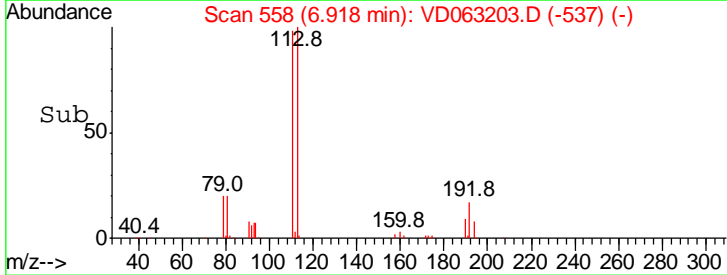
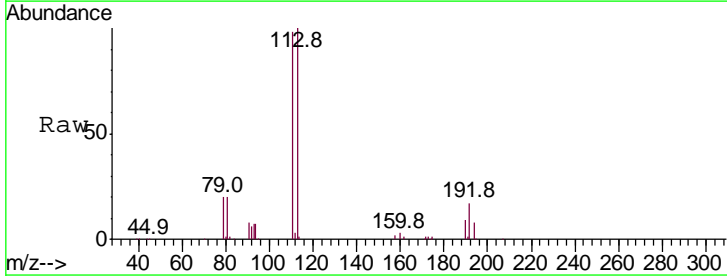
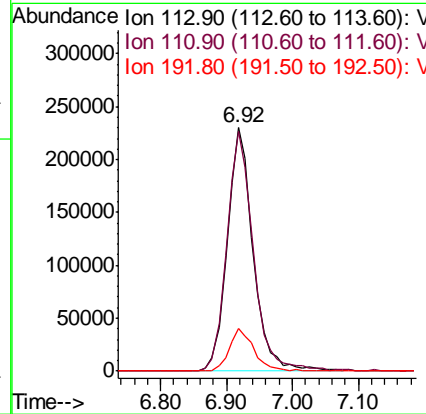
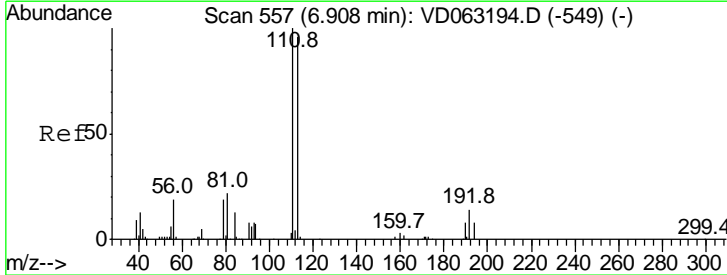
Ion	Ratio	Lower	Upper
114	100		
63	15.9	0.0	35.2
88	16.5	0.0	34.6

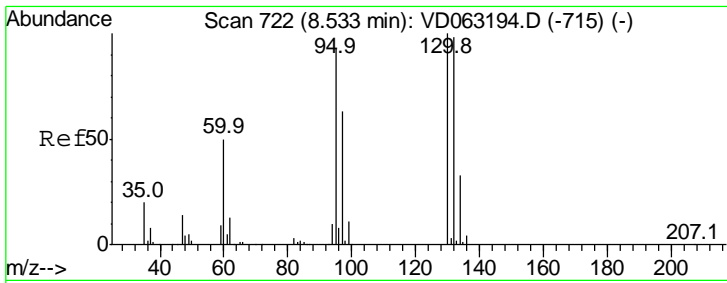


#35
 Dibromofluoromethane
 Concen: 64.254 ug/l
 RT: 6.92 min Scan# 558
 Delta R.T. 0.01 min
 Lab File: VD063203.D
 Acq: 29 Jul 2019 17:07

Tgt Ion: 113 Resp: 630524

Ion	Ratio	Lower	Upper
113	100		
111	98.4	83.2	124.8
192	17.3	11.8	17.8

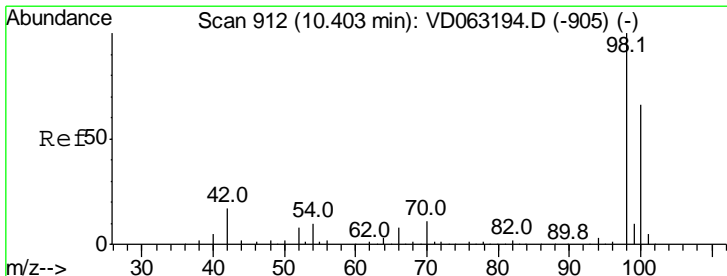
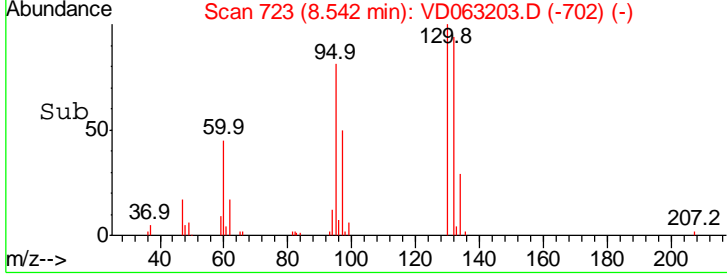
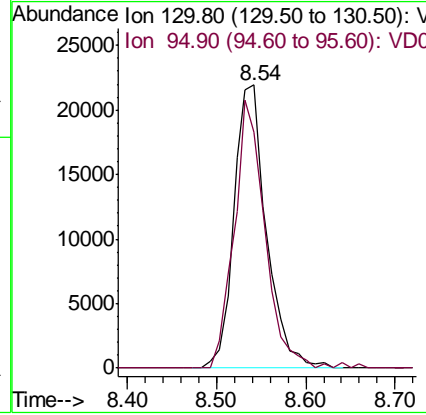
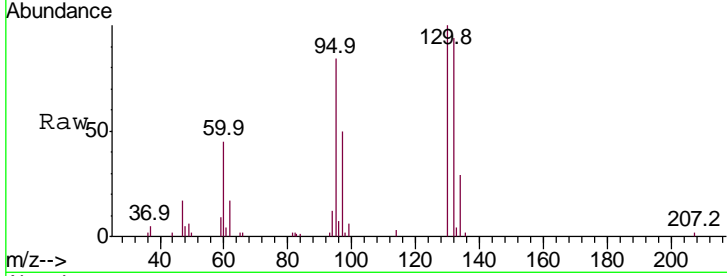




#44
 Trichloroethene
 Concen: 6.281 ug/l
 RT: 8.54 min Scan# 723
 Delta R.T. 0.01 min
 Lab File: VD063203.D
 Acq: 29 Jul 2019 17:07

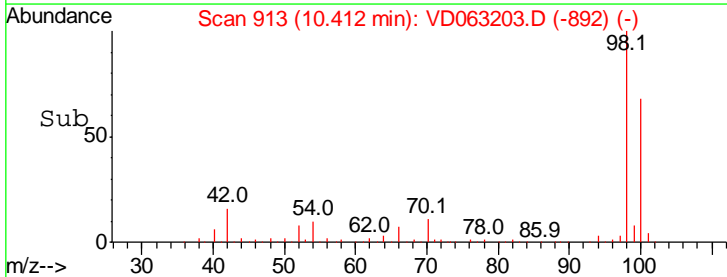
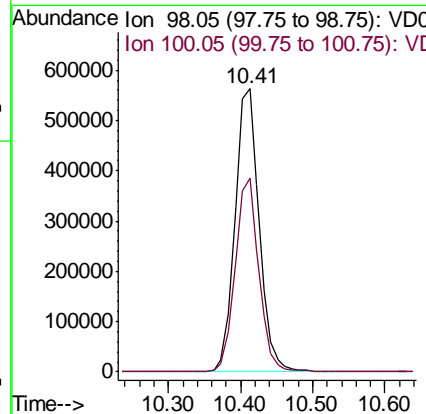
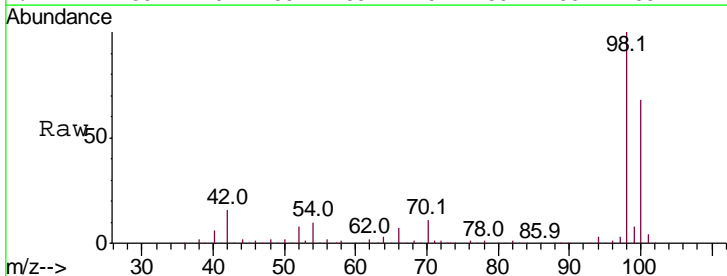
Instrument :
 MSVOA_D
ClientSampled :
 TP-6

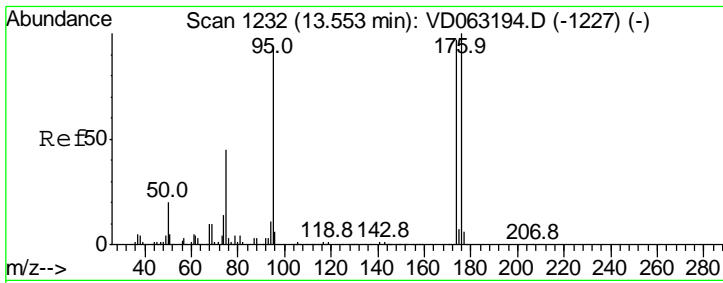
Tgt Ion	Resp	Lower	Upper
130	100		
95	83.6	0.0	185.4



#50
 Toluene-d8
 Concen: 59.970 ug/l
 RT: 10.41 min Scan# 913
 Delta R.T. 0.01 min
 Lab File: VD063203.D
 Acq: 29 Jul 2019 17:07

Tgt Ion	Resp	Lower	Upper
98	100		
100	68.4	53.2	79.8

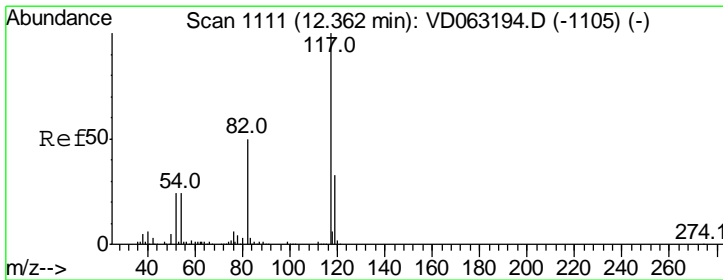
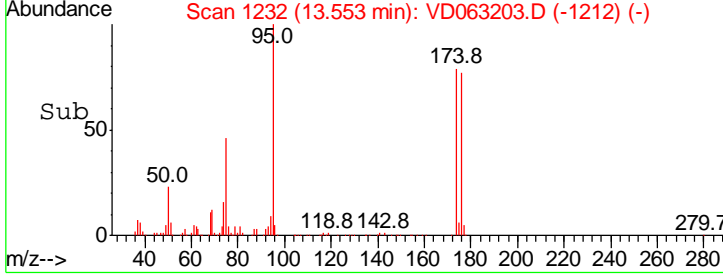
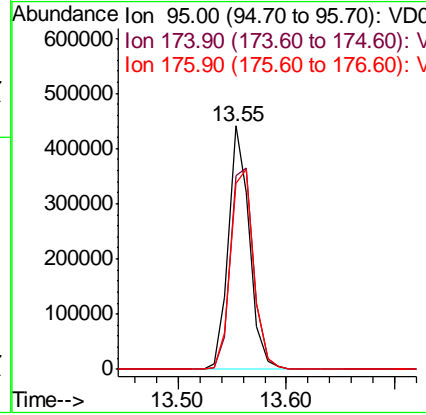
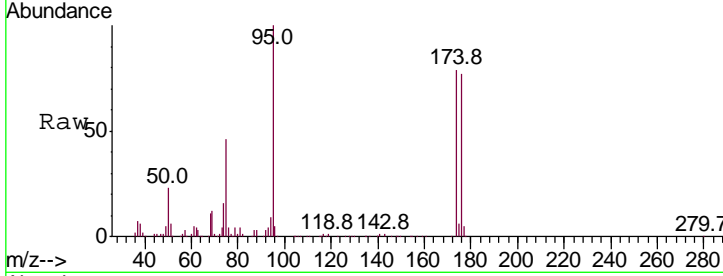




#62
 4-Bromofluorobenzene
 Concen: 59.295 ug/l
 RT: 13.55 min Scan# 1232
 Delta R.T. -0.00 min
 Lab File: VD063203.D
 Acq: 29 Jul 2019 17:07

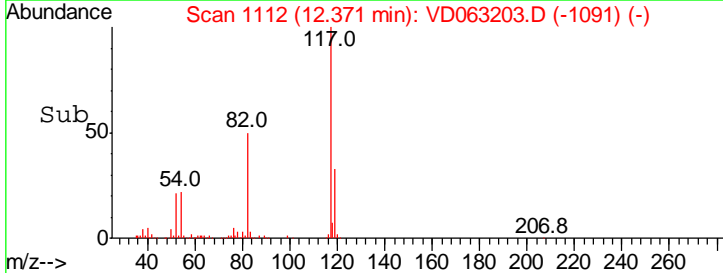
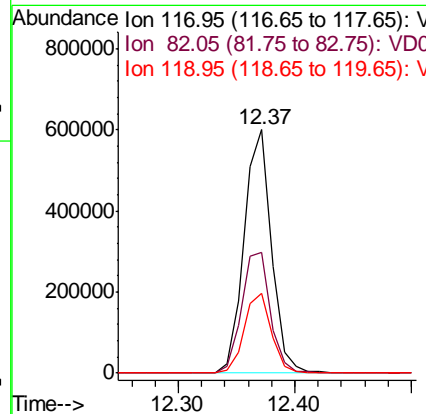
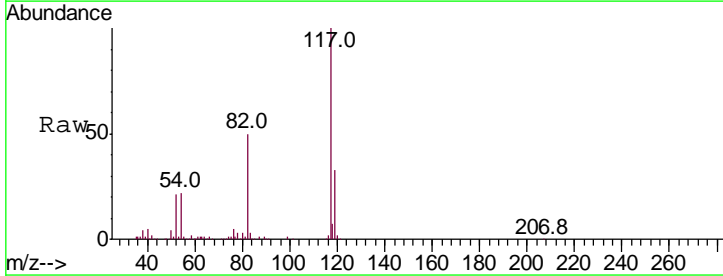
Instrument : MSVOA_D
 ClientSampled : TP-6

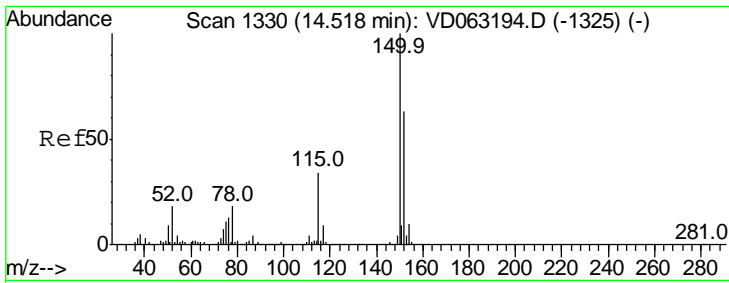
Tgt Ion	Resp	Lower	Upper
95	100		
174	79.4	0.0	205.4
176	76.5	0.0	211.8



#63
 Chlorobenzene-d5
 Concen: 50.000 ug/l
 RT: 12.37 min Scan# 1112
 Delta R.T. 0.01 min
 Lab File: VD063203.D
 Acq: 29 Jul 2019 17:07

Tgt Ion	Resp	Lower	Upper
117	100		
82	49.8	40.1	60.1
119	32.8	26.5	39.7





#72
 1,4-Dichlorobenzene-d4
 Concen: 50.000 ug/l
 RT: 14.52 min Scan# 1330
 Delta R.T. -0.00 min
 Lab File: VD063203.D
 Acq: 29 Jul 2019 17:07

Instrument :
 MSVOA_D
 ClientSampleId :
 TP-6

Tot Ion:152 Resp: 479390

Ion	Ratio	Lower	Upper
152	100		
115	58.6	27.5	82.4
150	153.7	0.0	320.6

