

Data Path : Z:\VOASRV\HPCHEM1\MSVOA D\DATA\VD072919\
 Data File : VD063216.D
 Acq On : 30 Jul 2019 00:51
 Operator : VA/AP
 Sample : K4049-03
 Misc : 4.47g/5ml/MSVOA D/SOIL
 ALS Vial : 33 Sample Multiplier: 1

Instrument :
 MSVOA_D
 ClientSampleId :
 SP-3

Integration Parameters: RTEINT.P

Integrator: RTE
 Smoothing : ON Filtering: 5
 Sampling : 1 Min Area: 3 % of largest Peak
 Start Thrs: 0.2 Max Peaks: 100
 Stop Thrs : 0 Peak Location: TOP

If leading or trailing edge < 100 prefer < Baseline drop else tangent >
 Peak separation: 5

Method : Z:\VOASRV\HPCHEM1\MSVOA_D\METHOD\82D072919S.M
 Title : SW846 8260

Signal : TIC

peak #	R.T. min	first scan	max scan	last scan	PK TY	peak height	corr. area	corr. % max.	% of total
1	1.487	3	6	19	rVB	583591	1702156	65.25%	10.585%
2	3.121	171	172	181	rVB2	16716	29142	1.12%	0.181%
3	3.800	235	241	247	rBV2	27778	79242	3.04%	0.493%
4	3.968	255	258	265	rBV2	8259	30725	1.18%	0.191%
5	6.163	473	481	488	rBV2	47122	176097	6.75%	1.095%
6	6.921	551	558	565	rBV2	559093	1637892	62.79%	10.185%
7	7.039	565	570	584	rVB	614575	1779063	68.20%	11.063%
8	7.453	605	612	623	rBV	411643	1137690	43.61%	7.075%
9	8.220	684	690	705	rBV	819406	2015450	77.26%	12.533%
10	10.406	907	912	922	rBV	1167859	2608495	100.00%	16.221%
11	12.365	1107	1111	1118	rBV	1092691	1765410	67.68%	10.978%
12	13.556	1228	1232	1239	rBV	1227871	1644079	63.03%	10.224%
13	13.714	1245	1248	1252	rVB	22949	36068	1.38%	0.224%
14	14.521	1326	1330	1337	rBV	1126399	1411118	54.10%	8.775%
15	15.121	1385	1391	1395	rVB2	17859	28067	1.08%	0.175%

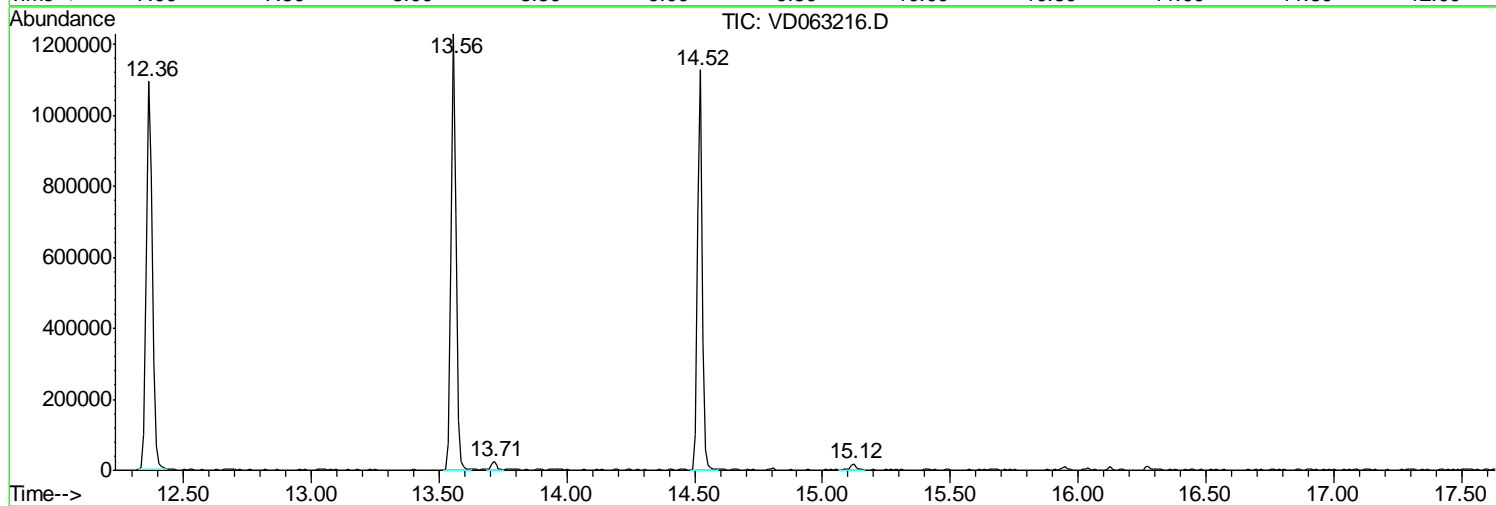
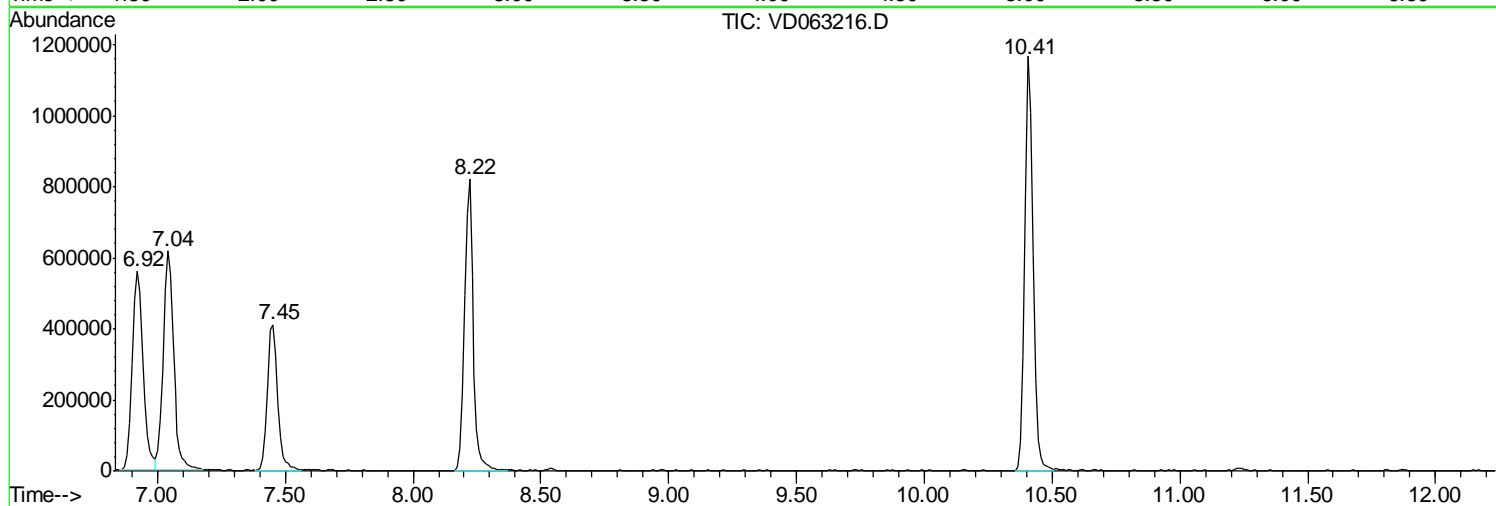
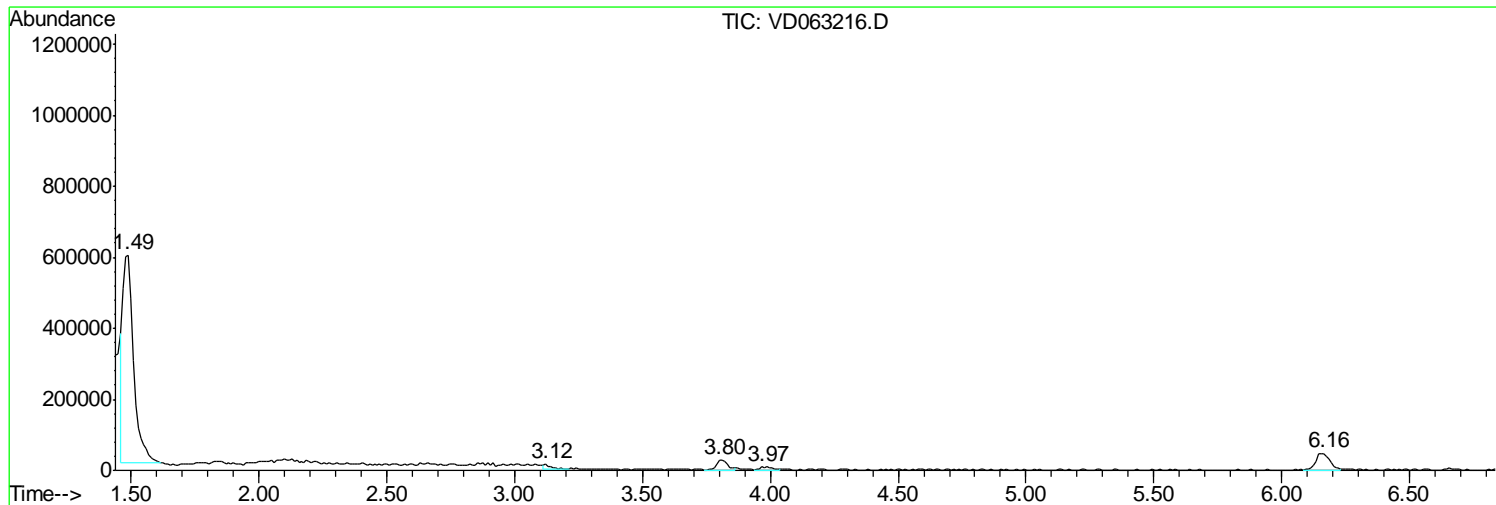
Sum of corrected areas: 16080694

Data Path : Z:\VOASRV\HPCHEM1\MSVOA D\DATA\VD072919\
Data File : VD063216.D
Acq On : 30 Jul 2019 00:51
Operator : VA/AP
Sample : K4049-03
Misc : 4.47µ/5ml/MSVOA D/SOIL
ALS Vial : 33 Sample Multiplier: 1

Instrument :
MSVOA_D
ClientSampled :
SP-3

Quant Method : Z:\VOASRV\HPCHEM1\MSVOA_D\METHOD\82D072919S.M
Quant Title : SW846 8260

TIC Library : C:\DATABASE\NIST11.L
TIC Integration Parameters: LSCINT.P



Data Path : Z:\VOASRV\HPCHEM1\MSVOA_D\DATA\VD072919\
Data File : VD063216.D
Acq On : 30 Jul 2019 00:51
Operator : VA/AP
Sample : K4049-03
Misc : 4.47g/5ml/MSVOA_D/SOIL
ALS Vial : 33 Sample Multiplier: 1

Instrument :
MSVOA_D
ClientSampleId :
SP-3

Quant Method : Z:\VOASRV\HPCHEM1\MSVOA_D\METHOD\82D072919S.M
Quant Title : SW846 8260

TIC Library : C:\DATABASE\NIST11.L
TIC Integration Parameters: LSCINT.P

No Library Search Compounds Detected

Data Path : Z:\VOASRV\HPCHEM1\MSVOA_D\DATA\VD072919\
Data File : VD063216.D
Acq On : 30 Jul 2019 00:51
Operator : VA/AP
Sample : K4049-03
Misc : 4.47g/5ml/MSVOA_D/SOIL
ALS Vial : 33 Sample Multiplier: 1

Instrument :
MSVOA_D
ClientSampleId :
SP-3

Quant Method : Z:\VOASRV\HPCHEM1\MSVOA_D\METHOD\82D072919S.M
Quant Title : SW846 8260

TIC Library : C:\DATABASE\NIST11.L
TIC Integration Parameters: LSCINT.P

TIC Top Hit name	RT	EstConc	Units	Response	--Internal Standard--			
					#	RT	Resp	Conc
