

Data Path : Z:\voasrv\HPCHEM1\MSVOA\_D\Data\VD072921\  
 Data File : VD069906.D  
 Acq On : 29 Jul 2021 12:41  
 Operator : VA/SY  
 Sample : M3216-11  
 Misc : 5.00G/5.00ml/MSVOA\_D/SOIL  
 ALS Vial : 6 Sample Multiplier: 1

**Instrument :**  
 MSVOA\_D  
**ClientSampleId :**  
 SPLP-LEACHATE-AMENDED-COM-

Quant Time: Jul 30 00:54:19 2021  
 Quant Method : Z:\voasrv\HPCHEM1\MSVOA\_D\Method\82D072221S.M  
 Quant Title : SW846 8260  
 QLast Update : Fri Jul 23 04:51:13 2021  
 Response via : Initial Calibration

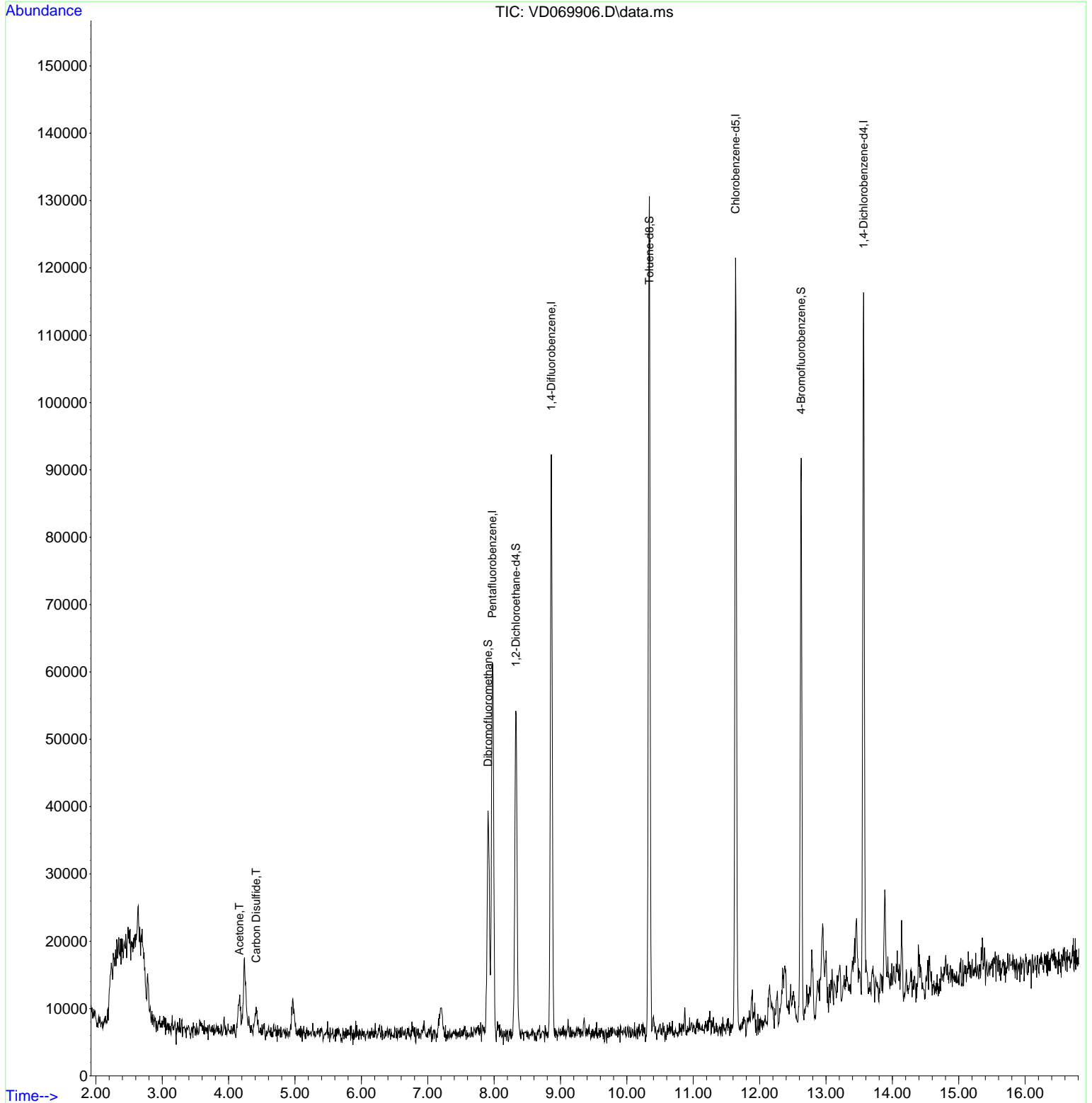
Compound	R.T.	QIon	Response	Conc	Units	Dev(Min)
-----						
Internal Standards						
1) Pentafluorobenzene	7.973	168	41363	50.000	ug/l	0.00
34) 1,4-Difluorobenzene	8.861	114	69940	50.000	ug/l	0.00
63) Chlorobenzene-d5	11.638	117	68962	50.000	ug/l	0.00
72) 1,4-Dichlorobenzene-d4	13.567	152	28652	50.000	ug/l	0.00
System Monitoring Compounds						
33) 1,2-Dichloroethane-d4	8.326	65	38479	80.887	ug/l	0.00
Spiked Amount	50.000	Range	50 - 163	Recovery	=	161.780%
35) Dibromofluoromethane	7.909	113	26209	59.444	ug/l	0.00
Spiked Amount	50.000	Range	54 - 147	Recovery	=	118.880%
50) Toluene-d8	10.338	98	87211	51.298	ug/l	0.00
Spiked Amount	50.000	Range	49 - 140	Recovery	=	102.600%
62) 4-Bromofluorobenzene	12.626	95	28458	50.087	ug/l	0.00
Spiked Amount	50.000	Range	25 - 144	Recovery	=	100.180%
Target Compounds						
					Qvalue	
16) Acetone	4.162	43	9711	113.003	ug/l #	64
17) Carbon Disulfide	4.415	76	6894	4.074	ug/l	97
-----						

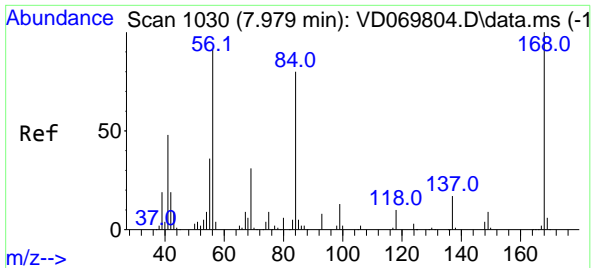
(#) = qualifier out of range (m) = manual integration (+) = signals summed

Data Path : Z:\voasrv\HPCHEM1\MSVOA\_D\Data\VD072921\  
 Data File : VD069906.D  
 Acq On : 29 Jul 2021 12:41  
 Operator : VA/SY  
 Sample : M3216-11  
 Misc : 5.00G/5.00ml/MSVOA\_D/SOIL  
 ALS Vial : 6 Sample Multiplier: 1

**Instrument :**  
 MSVOA\_D  
**ClientSampleId :**  
 SPLP-LEACHATE-AMENDED-COM-

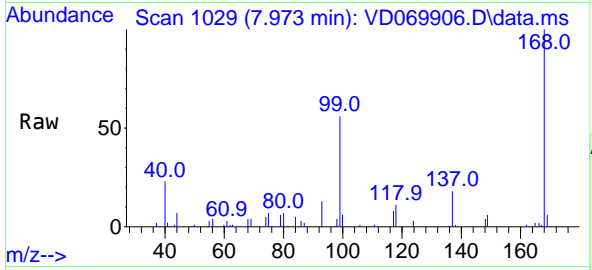
Quant Time: Jul 30 00:54:19 2021  
 Quant Method : Z:\voasrv\HPCHEM1\MSVOA\_D\Method\82D072221S.M  
 Quant Title : SW846 8260  
 QLast Update : Fri Jul 23 04:51:13 2021  
 Response via : Initial Calibration



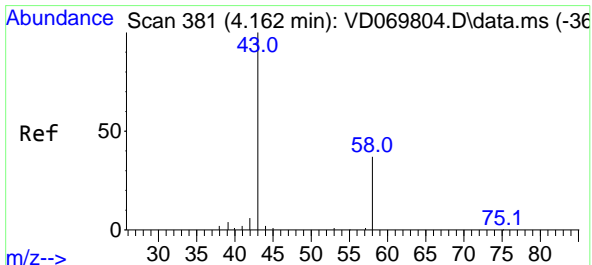
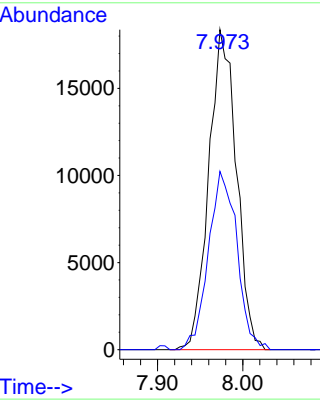
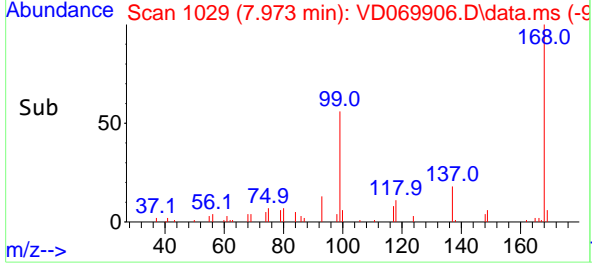


#1  
 Pentafluorobenzene  
 Concen: 50.000 ug/l  
 RT: 7.973 min Scan# 1029  
 Delta R.T. -0.006 min  
 Lab File: VD069906.D  
 Acq: 29 Jul 2021 12:41

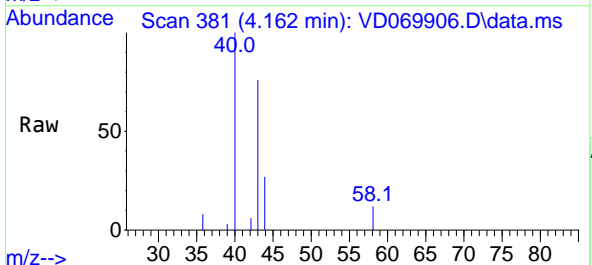
**Instrument :**  
 MSVOA\_D  
**ClientSampleId :**  
 SPLP-LEACHATE-AMENDED-COM-



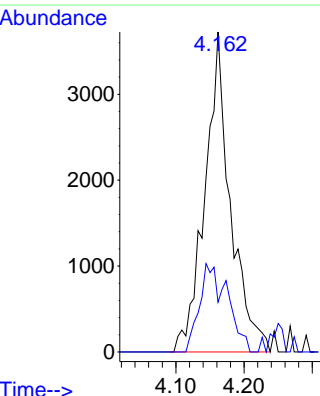
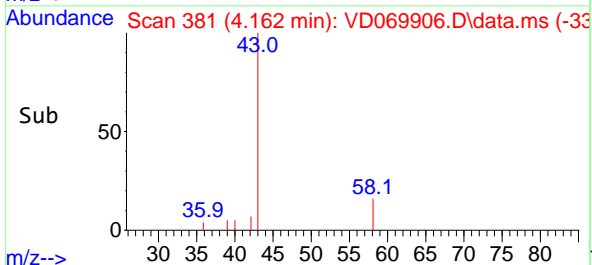
Tgt Ion:168 Resp: 41363  
 Ion Ratio Lower Upper  
 168 100  
 99 55.7 51.1 76.7

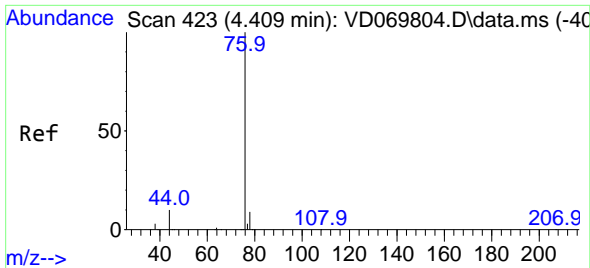


#16  
 Acetone  
 Concen: 113.003 ug/l  
 RT: 4.162 min Scan# 381  
 Delta R.T. 0.000 min  
 Lab File: VD069906.D  
 Acq: 29 Jul 2021 12:41



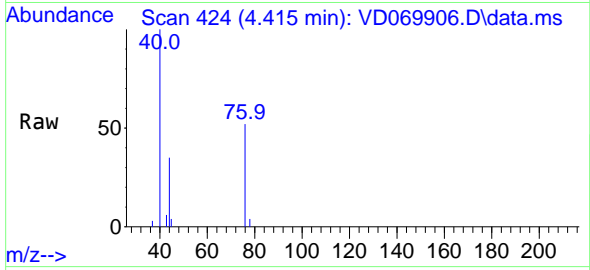
Tgt Ion: 43 Resp: 9711  
 Ion Ratio Lower Upper  
 43 100  
 58 15.5 29.4 44.0#



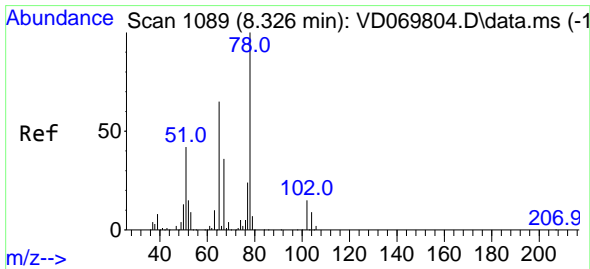
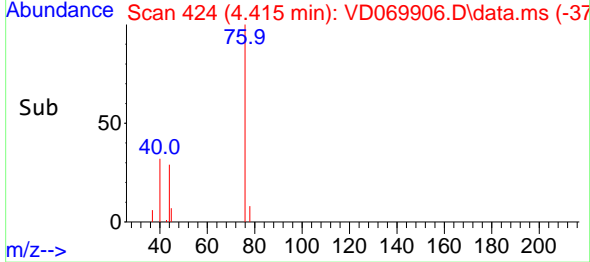
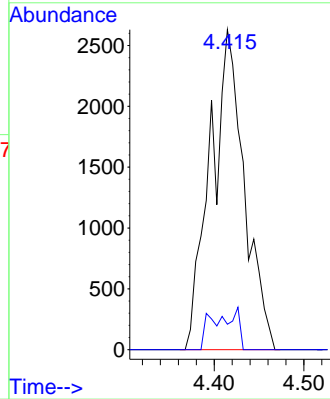


#17  
 Carbon Disulfide  
 Concen: 4.074 ug/l  
 RT: 4.415 min Scan# 424  
 Delta R.T. 0.006 min  
 Lab File: VD069906.D  
 Acq: 29 Jul 2021 12:41

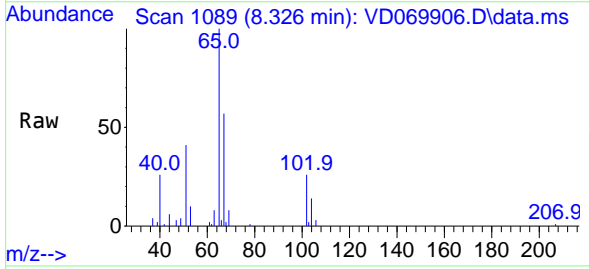
Instrument : MSVOA\_D  
 ClientSampleId : SPLP-LEACHATE-AMENDED-COM-



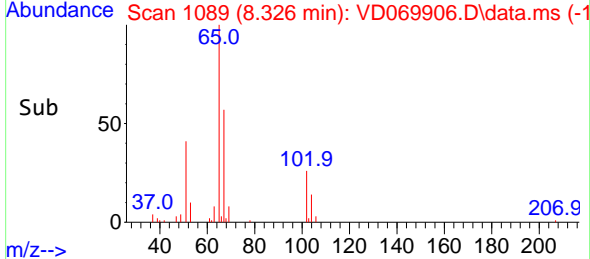
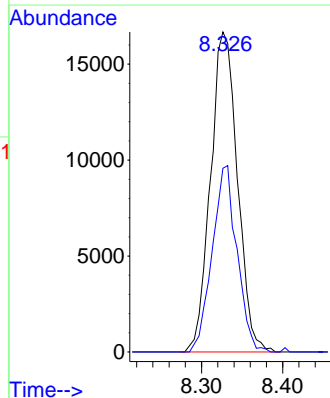
Tgt Ion: 76 Resp: 6894  
 Ion Ratio Lower Upper  
 76 100  
 78 7.9 7.3 10.9

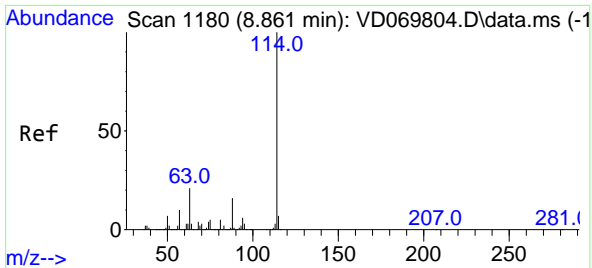


#33  
 1,2-Dichloroethane-d4  
 Concen: 80.887 ug/l  
 RT: 8.326 min Scan# 1089  
 Delta R.T. 0.000 min  
 Lab File: VD069906.D  
 Acq: 29 Jul 2021 12:41



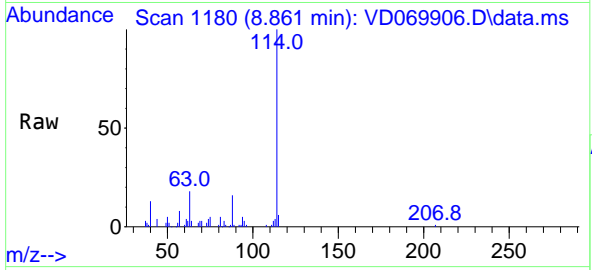
Tgt Ion: 65 Resp: 38479  
 Ion Ratio Lower Upper  
 65 100  
 67 53.4 0.0 111.2





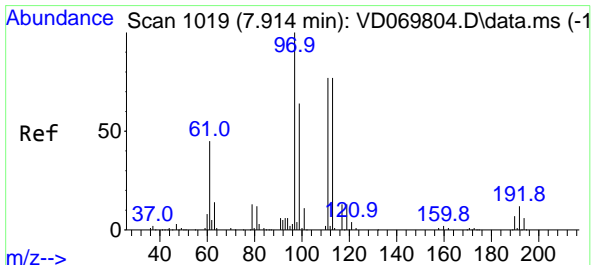
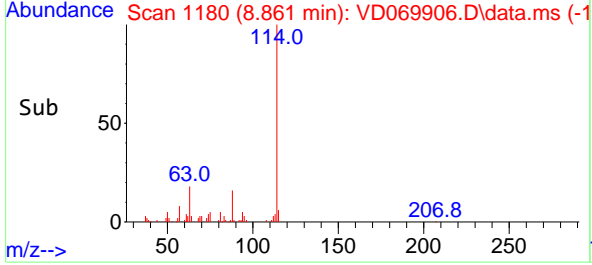
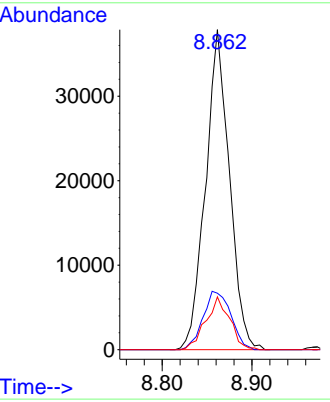
#34  
 1,4-Difluorobenzene  
 Concen: 50.000 ug/l  
 RT: 8.861 min Scan# 1180  
 Delta R.T. 0.000 min  
 Lab File: VD069906.D  
 Acq: 29 Jul 2021 12:41

Instrument : MSVOA\_D  
 ClientSampleId : SPLP-LEACHATE-AMENDED-COM-

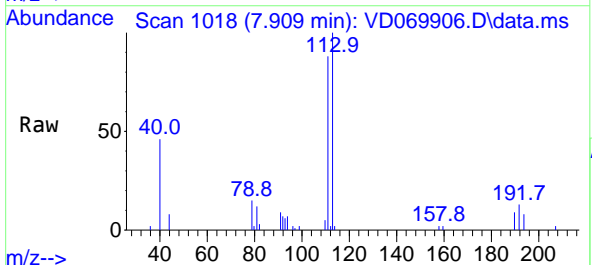


Tgt Ion:114 Resp: 69940

Ion	Ratio	Lower	Upper
114	100		
63	17.7	0.0	41.6
88	16.5	0.0	31.4

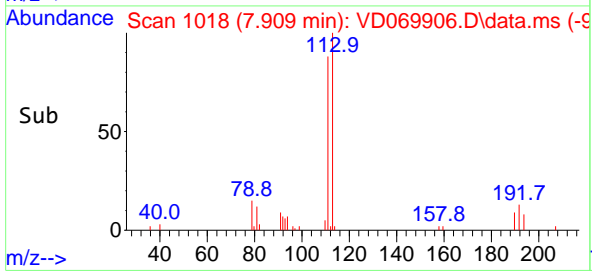
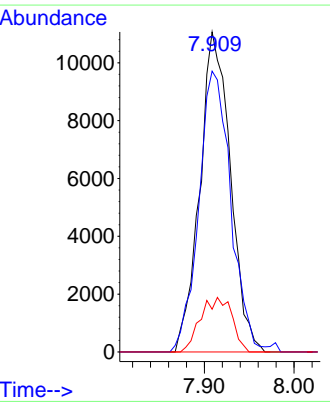


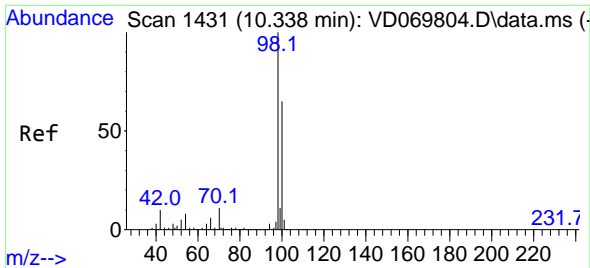
#35  
 Dibromofluoromethane  
 Concen: 59.444 ug/l  
 RT: 7.909 min Scan# 1018  
 Delta R.T. -0.006 min  
 Lab File: VD069906.D  
 Acq: 29 Jul 2021 12:41



Tgt Ion:113 Resp: 26209

Ion	Ratio	Lower	Upper
113	100		
111	91.6	80.5	120.7
192	17.5	12.6	19.0

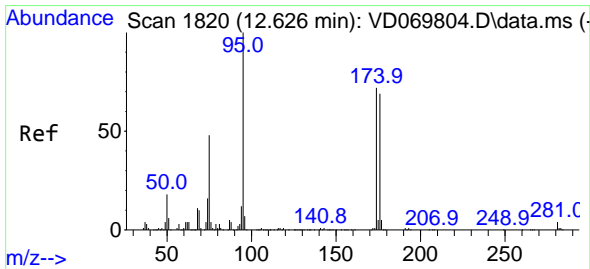
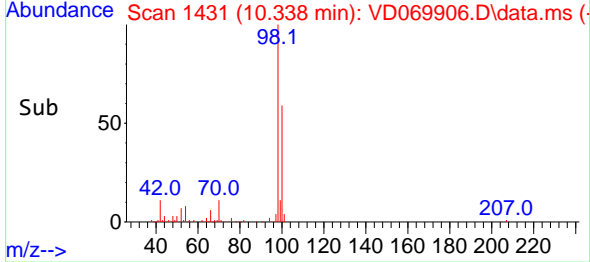
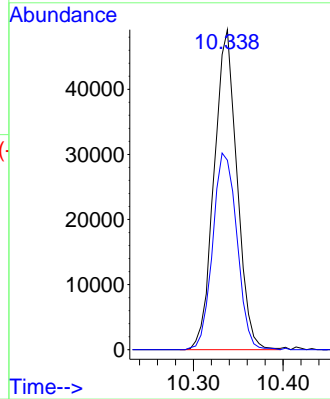
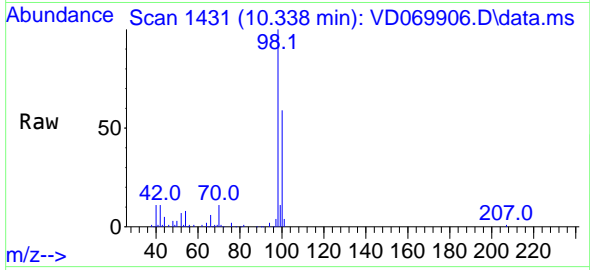




#50  
 Toluene-d8  
 Concen: 51.298 ug/l  
 RT: 10.338 min Scan# 1431  
 Delta R.T. 0.000 min  
 Lab File: VD069906.D  
 Acq: 29 Jul 2021 12:41

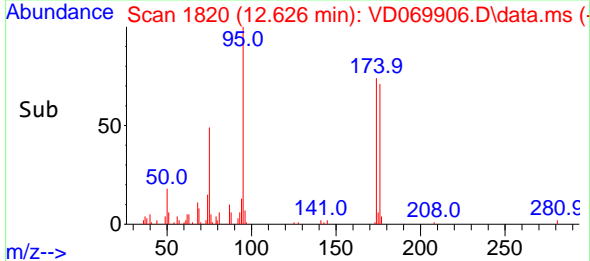
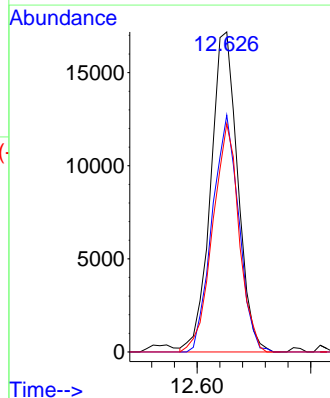
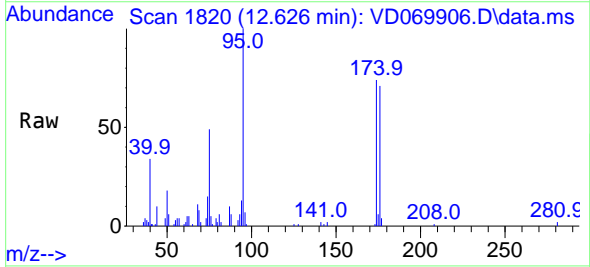
**Instrument :**  
 MSVOA\_D  
**ClientSampled :**  
 SPLP-LEACHATE-AMENDED-COM-

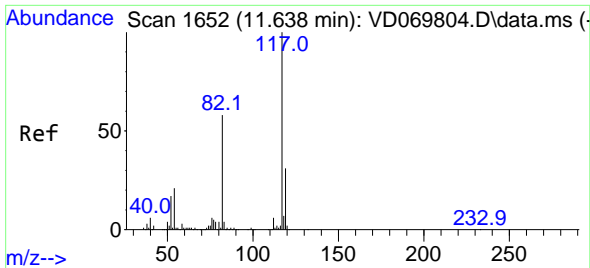
Tgt Ion: 98 Resp: 87211  
 Ion Ratio Lower Upper  
 98 100  
 100 64.9 51.9 77.9



#62  
 4-Bromofluorobenzene  
 Concen: 50.087 ug/l  
 RT: 12.626 min Scan# 1820  
 Delta R.T. 0.000 min  
 Lab File: VD069906.D  
 Acq: 29 Jul 2021 12:41

Tgt Ion: 95 Resp: 28458  
 Ion Ratio Lower Upper  
 95 100  
 174 72.6 0.0 142.6  
 176 69.5 0.0 134.2



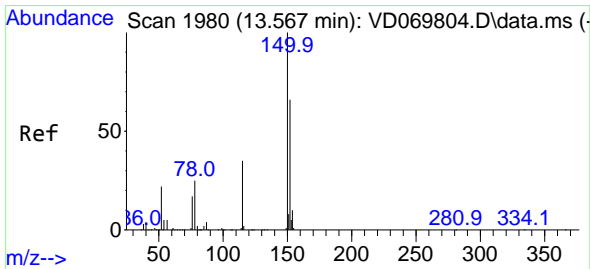
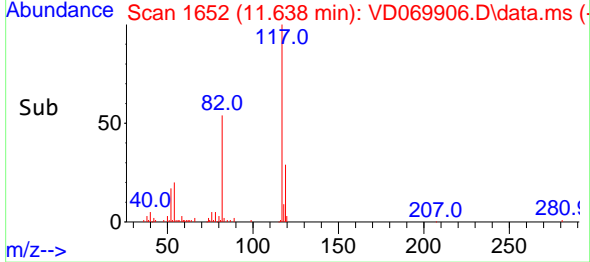
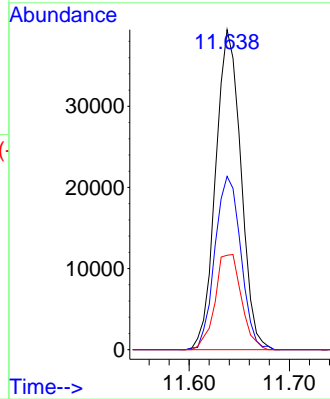
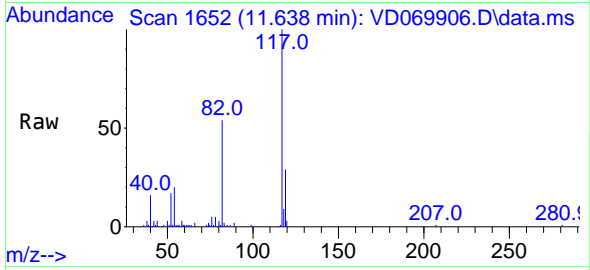


#63  
 Chlorobenzene-d5  
 Concen: 50.000 ug/l  
 RT: 11.638 min Scan# 1652  
 Delta R.T. 0.000 min  
 Lab File: VD069906.D  
 Acq: 29 Jul 2021 12:41

Instrument :  
 MSVOA\_D  
 ClientSampleId :  
 SPLP-LEACHATE-AMENDED-COM-

Tgt Ion:117 Resp: 68962

Ion	Ratio	Lower	Upper
117	100		
82	54.2	46.3	69.5
119	29.5	24.7	37.1



#72  
 1,4-Dichlorobenzene-d4  
 Concen: 50.000 ug/l  
 RT: 13.567 min Scan# 1980  
 Delta R.T. 0.000 min  
 Lab File: VD069906.D  
 Acq: 29 Jul 2021 12:41

Tgt Ion:152 Resp: 28652

Ion	Ratio	Lower	Upper
152	100		
115	60.1	31.1	93.3
150	147.5	0.0	343.0

