

Data Path : Z:\VOASRV\HPCHEM1\MSVOA D\DATA\VD080119\
 Data File : VD063290.D
 Acq On : 1 Aug 2019 13:02
 Operator : VA/AP
 Sample : K4106-01
 Misc : 5.05g/5ml/MSVOA D/SOIL
 ALS Vial : 7 Sample Multiplier: 1

Instrument :
 MSVOA_D
 ClientSampled :
 WC-01

Integration Parameters: RTEINT.P

Integrator: RTE
 Smoothing : ON
 Sampling : 1
 Start Thrs: 0.2
 Stop Thrs : 0

Filtering: 5
 Min Area: 3 % of largest Peak
 Max Peaks: 100
 Peak Location: TOP

If leading or trailing edge < 100 prefer < Baseline drop else tangent >
 Peak separation: 5

Method : Z:\VOASRV\HPCHEM1\MSVOA_D\METHOD\82D072919S.M
 Title : SW846 8260

Signal : TIC

peak #	R.T. min	first scan	max scan	last scan	PK TY	peak height	corr. area	corr. % max.	% of total
1	1.833	38	41	47	rVB2	16092	39111	1.04%	0.115%
2	3.202	174	180	186	rBV	24826	72859	1.93%	0.214%
3	3.359	191	196	204	rBV	228319	472192	12.50%	1.386%
4	3.802	236	241	246	rBV	57774	151461	4.01%	0.445%
5	4.964	353	359	366	rBV4	19742	68576	1.82%	0.201%
6	5.791	435	443	447	rBV5	13004	44404	1.18%	0.130%
7	6.027	460	467	471	rBV3	15569	47794	1.27%	0.140%
8	6.145	471	479	486	rVV	66704	227657	6.03%	0.668%
9	6.903	544	556	563	rBV	620965	1934373	51.21%	5.679%
10	7.031	563	569	584	rVB	1158580	3416988	90.45%	10.032%
11	7.435	602	610	619	rBV	453701	1238680	32.79%	3.637%
12	7.671	629	634	641	rBV2	19913	63442	1.68%	0.186%
13	8.203	682	688	706	rBV	1481857	3777691	100.00%	11.091%
14	8.528	716	721	727	rVB2	49936	121079	3.21%	0.355%
15	9.532	819	823	830	rVB3	41956	118172	3.13%	0.347%
16	9.719	835	842	846	rBV3	58358	181174	4.80%	0.532%
17	9.768	846	847	855	rVB2	19219	40287	1.07%	0.118%
18	10.398	900	911	917	rBV	1409312	3177185	84.10%	9.328%
19	10.496	917	921	929	rVB	265160	643563	17.04%	1.890%
20	11.245	989	997	1001	rVB6	19675	62408	1.65%	0.183%
21	12.288	1099	1103	1106	rVV4	19387	48326	1.28%	0.142%
22	12.357	1106	1110	1119	rVV	2180369	3630895	96.11%	10.660%
23	12.515	1122	1126	1132	rVB	498669	761516	20.16%	2.236%
24	12.662	1137	1141	1146	rVV	149628	309261	8.19%	0.908%
25	13.036	1176	1179	1187	rVB2	481480	948544	25.11%	2.785%
26	13.391	1212	1215	1219	rVB	49479	77039	2.04%	0.226%
27	13.548	1227	1231	1238	rBV	1717573	2385191	63.14%	7.003%
28	13.706	1244	1247	1249	rBV2	48496	69680	1.84%	0.205%
29	13.765	1249	1253	1258	rVB	93858	131085	3.47%	0.385%
30	13.843	1258	1261	1262	rBV	140338	175444	4.64%	0.515%
31	13.873	1262	1264	1267	rVB	199007	239575	6.34%	0.703%
32	13.922	1267	1269	1273	rBV	278377	388331	10.28%	1.140%
33	14.080	1281	1285	1290	rBV	321902	460760	12.20%	1.353%
34	14.227	1296	1300	1303	rVB2	158990	221676	5.87%	0.651%

Data Path : Z:\VOASRV\HPCHEM1\MSVOA D\DATA\VD080119\
 Data File : VD063290.D
 Acq On : 1 Aug 2019 13:02
 Operator : VA/AP
 Sample : K4106-01
 Misc : 5.05µ/5ml/MSVOA D/SOIL
 ALS Vial : 7 Sample Multiplier: 1

Instrument :
 MSVOA_D
 ClientSampleId :
 WC-01

Integration Parameters: RTEINT.P

Integrator: RTE
 Smoothing : ON
 Sampling : 1
 Start Thrs: 0.2
 Stop Thrs : 0

Filtering: 5
 Min Area: 3 % of largest Peak
 Max Peaks: 100
 Peak Location: TOP

If leading or trailing edge < 100 prefer < Baseline drop else tangent >
 Peak separation: 5

Method : Z:\VOASRV\HPCHEM1\MSVOA_D\METHOD\82D072919S.M
 Title : SW846 8260

35	14.286	1303	1306	1307	rBV	58435	67857	1.80%	0.199%
36	14.326	1307	1310	1315	rVB5	28080	69118	1.83%	0.203%
37	14.405	1315	1318	1320	rBV	58793	91527	2.42%	0.269%
38	14.513	1326	1329	1331	rBV	2327313	2804011	74.23%	8.233%
39	14.552	1331	1333	1335	rVB	272577	291735	7.72%	0.857%
40	14.621	1338	1340	1345	rVB	54283	82432	2.18%	0.242%
41	14.700	1345	1348	1353	rBV2	199135	340882	9.02%	1.001%
42	14.769	1353	1355	1360	rVB	218773	314013	8.31%	0.922%
43	14.907	1367	1369	1371	rBV	38533	40584	1.07%	0.119%
44	14.966	1374	1375	1377	rBV	38152	54252	1.44%	0.159%
45	14.995	1377	1378	1381	rVB	48020	49573	1.31%	0.146%
46	15.044	1381	1383	1386	rBV	176513	230896	6.11%	0.678%
47	15.094	1386	1388	1389	rBV	24978	38490	1.02%	0.113%
48	15.133	1389	1392	1395	rVV3	90430	136785	3.62%	0.402%
49	15.222	1398	1401	1403	rVB3	22388	38793	1.03%	0.114%
50	15.261	1403	1405	1408	rBV	69576	82735	2.19%	0.243%
51	15.340	1408	1413	1414	rBV	97960	127220	3.37%	0.374%
52	15.369	1414	1416	1419	rVB	155739	190381	5.04%	0.559%
53	15.428	1419	1422	1424	rBV3	73541	129576	3.43%	0.380%
54	15.458	1424	1425	1429	rVB4	32304	51820	1.37%	0.152%
55	15.566	1433	1436	1440	rVV2	56504	96989	2.57%	0.285%
56	15.625	1440	1442	1443	rVV2	39409	42709	1.13%	0.125%
57	15.665	1443	1446	1449	rVV2	395349	516938	13.68%	1.518%
58	15.734	1451	1453	1455	rBV	45044	56848	1.50%	0.167%
59	15.793	1455	1459	1462	rVB5	48342	83905	2.22%	0.246%
60	15.862	1462	1466	1467	rBV3	26131	38121	1.01%	0.112%
61	15.921	1467	1472	1474	rVV3	88717	264297	7.00%	0.776%
62	15.990	1474	1479	1481	rVV2	159638	268243	7.10%	0.788%
63	16.029	1481	1483	1485	rVV3	25539	41184	1.09%	0.121%
64	16.118	1488	1492	1498	rBV	597276	772805	20.46%	2.269%
65	16.216	1500	1502	1504	rVV	80620	114583	3.03%	0.336%
66	16.255	1504	1506	1508	rVV	69740	77759	2.06%	0.228%
67	16.354	1513	1516	1518	rBV	46732	60154	1.59%	0.177%
68	16.472	1524	1528	1530	rBV3	66260	114309	3.03%	0.336%
69	16.570	1535	1538	1540	rVV	38063	45795	1.21%	0.134%
70	16.620	1540	1543	1545	rVV	55308	71587	1.89%	0.210%
71	16.728	1550	1554	1556	rBV3	49603	77340	2.05%	0.227%

Data Path : Z:\VOASRV\HPCHEM1\MSVOA D\DATA\VD080119\
Data File : VD063290.D
Acq On : 1 Aug 2019 13:02
Operator : VA/AP
Sample : K4106-01
Misc : 5.05g/5ml/MSVOA D/SOIL
ALS Vial : 7 Sample Multiplier: 1

Instrument :
MSVOA_D
ClientSampleId :
WC-01

Integration Parameters: RTEINT.P
Integrator: RTE
Smoothing : ON Filtering: 5
Sampling : 1 Min Area: 3 % of largest Peak
Start Thrs: 0.2 Max Peaks: 100
Stop Thrs : 0 Peak Location: TOP

If leading or trailing edge < 100 prefer < Baseline drop else tangent >
Peak separation: 5

Method : Z:\VOASRV\HPCHEM1\MSVOA_D\METHOD\82D072919S.M
Title : SW846 8260

72	16.856	1564	1567	1570	rBV4	22768	54134	1.43%	0.159%
73	16.905	1570	1572	1579	rVB	97911	162082	4.29%	0.476%
74	17.053	1583	1587	1590	rVB	77043	120743	3.20%	0.355%

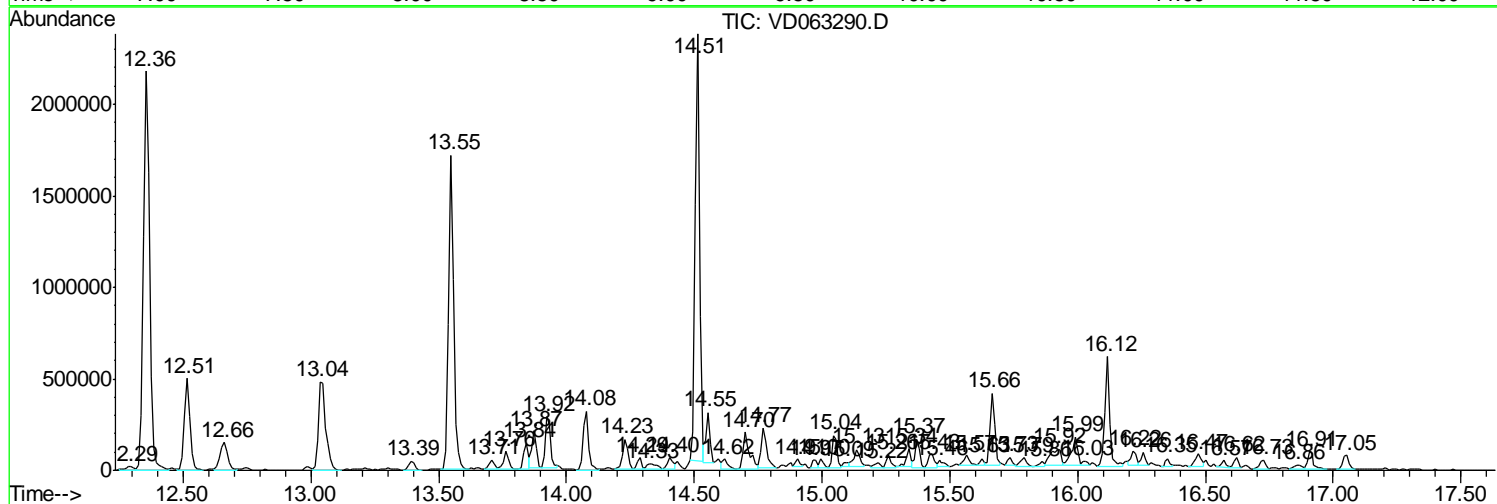
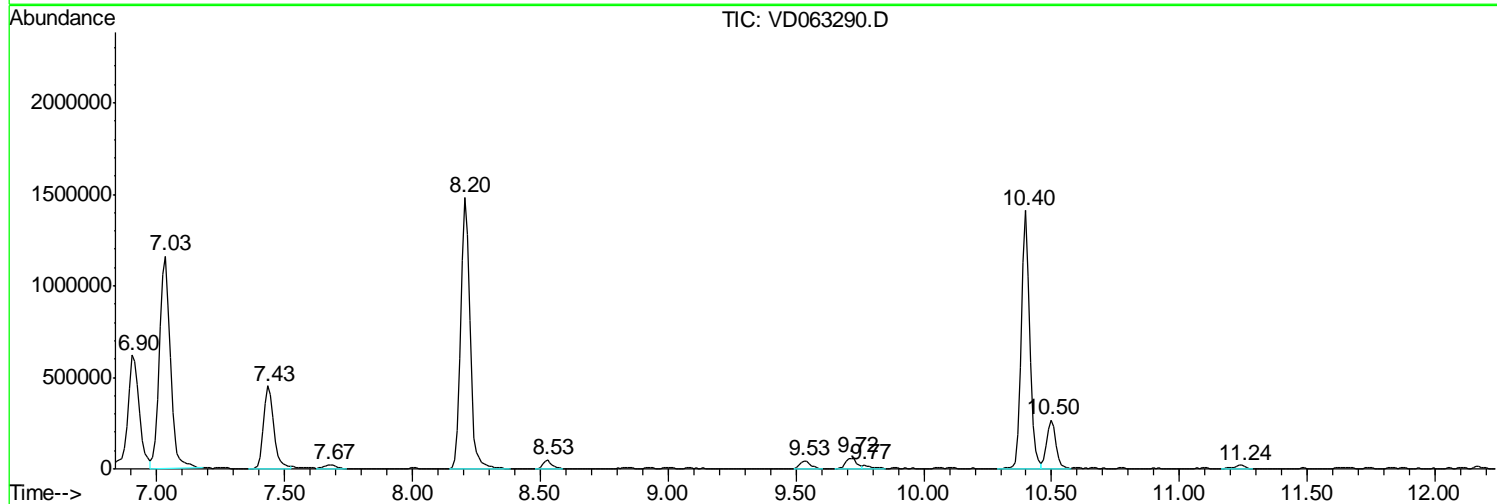
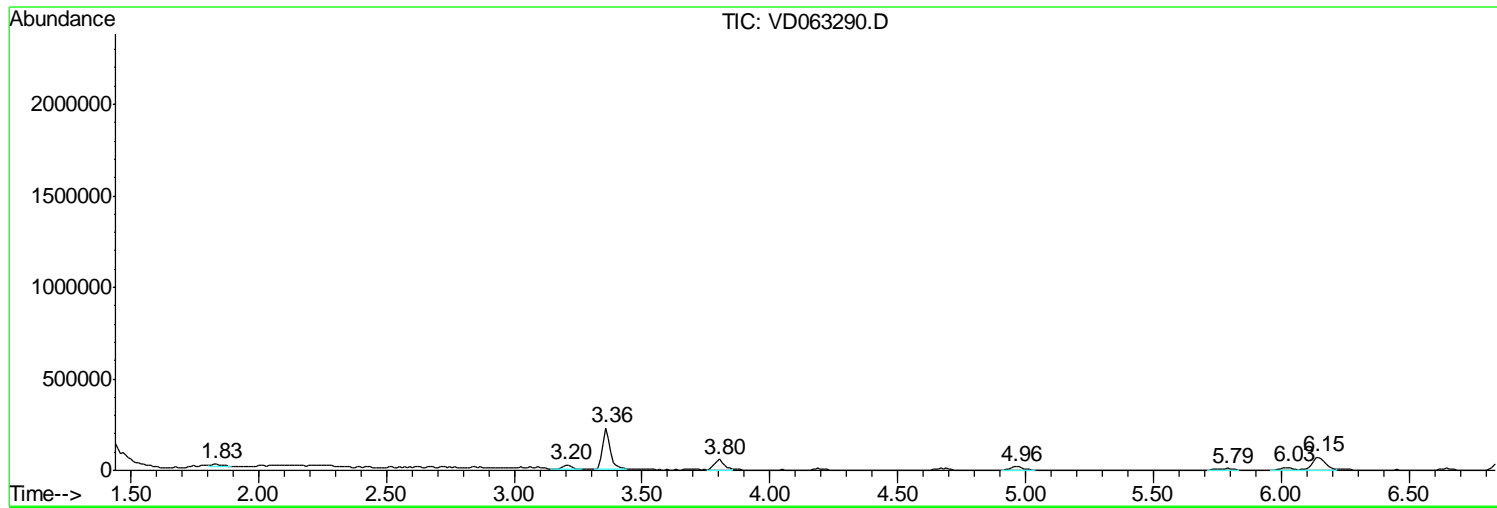
Sum of corrected areas: 34059624

Data Path : Z:\VOASRV\HPCHEM1\MSVOA D\DATA\VD080119\
 Data File : VD063290.D
 Acq On : 1 Aug 2019 13:02
 Operator : VA/AP
 Sample : K4106-01
 Misc : 5.05µ/5ml/MSVOA D/SOIL
 ALS Vial : 7 Sample Multiplier: 1

Instrument :
 MSVOA_D
 ClientSampleId :
 WC-01

Quant Method : Z:\VOASRV\HPCHEM1\MSVOA_D\METHOD\82D072919S.M
 Quant Title : SW846 8260

TIC Library : C:\DATABASE\NIST11.L
 TIC Integration Parameters: LSCINT.P



Data Path : Z:\VOASRV\HPCHEM1\MSVOA D\DATA\VD080119\
 Data File : VD063290.D
 Acq On : 1 Aug 2019 13:02
 Operator : VA/AP
 Sample : K4106-01
 Misc : 5.05µ/5ml/MSVOA D/SOIL
 ALS Vial : 7 Sample Multiplier: 1

Instrument :
 MSVOA_D
 ClientSampleID :
 WC-01

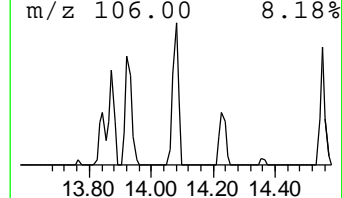
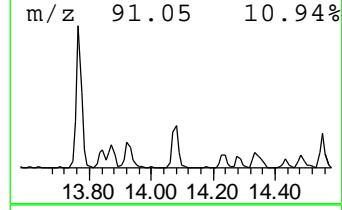
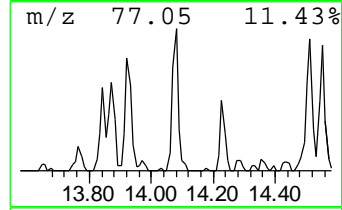
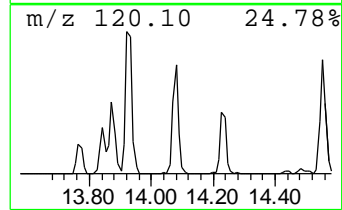
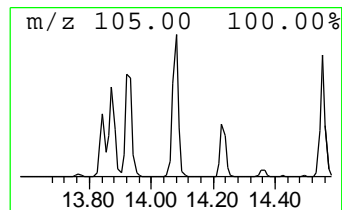
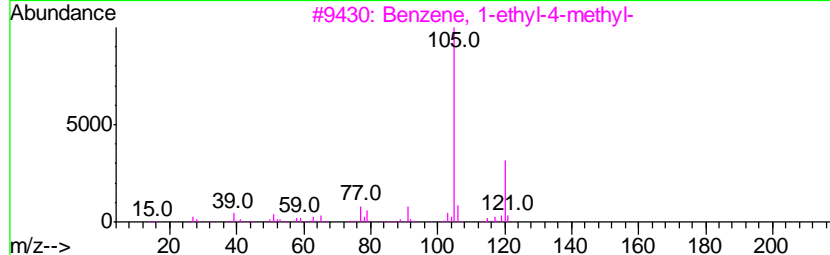
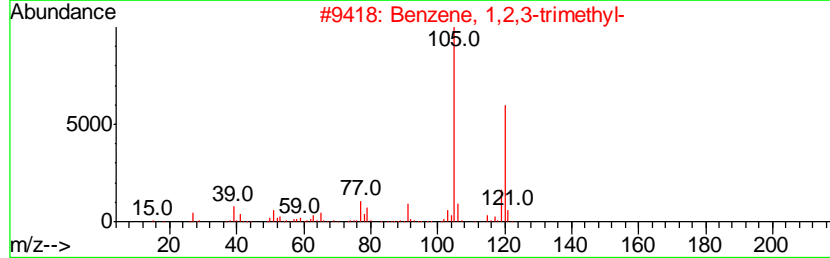
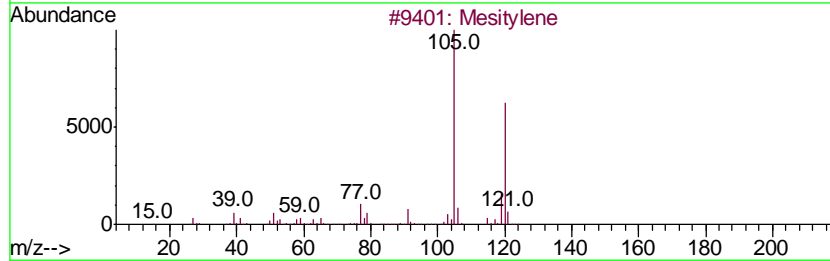
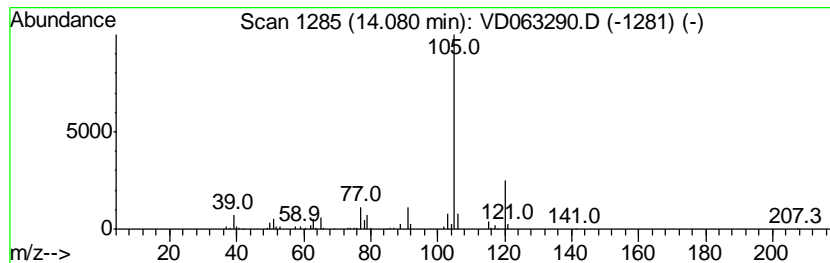
Quant Method : Z:\VOASRV\HPCHEM1\MSVOA_D\METHOD\82D072919S.M
 Quant Title : SW846 8260

TIC Library : C:\DATABASE\NIST11.L
 TIC Integration Parameters: LSCINT.P

 Peak Number 1 Mesitylene Concentration Rank 2

R.T.	EstConc	Area	Relative to ISTD	R.T.
14.08	8.22 ug/l	460760	1,4-Dichlorobenzene-d4	14.51

Hit#	of	Tentative ID	MW	MolForm	CAS#	Qual
1	5	Mesitylene	120	C9H12	000108-67-8	90
2		Benzene, 1,2,3-trimethyl-	120	C9H12	000526-73-8	90
3		Benzene, 1-ethyl-4-methyl-	120	C9H12	000622-96-8	90
4		Benzene, 1-ethyl-3-methyl-	120	C9H12	000620-14-4	90
5		Benzene, 1-ethyl-2-methyl-	120	C9H12	000611-14-3	90



Data Path : Z:\VOASRV\HPCHEM1\MSVOA D\DATA\VD080119\
 Data File : VD063290.D
 Acq On : 1 Aug 2019 13:02
 Operator : VA/AP
 Sample : K4106-01
 Misc : 5.05µ/5ml/MSVOA D/SOIL
 ALS Vial : 7 Sample Multiplier: 1

Instrument :
 MSVOA_D
 ClientSampleID :
 WC-01

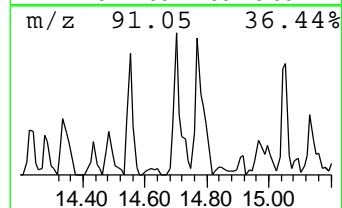
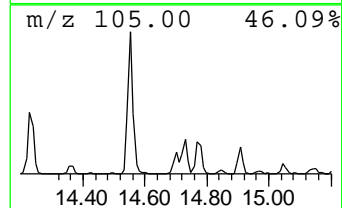
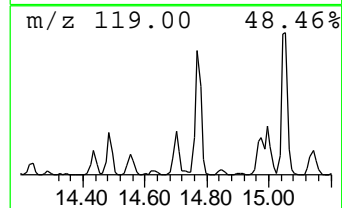
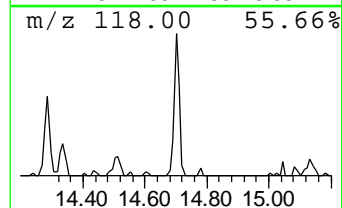
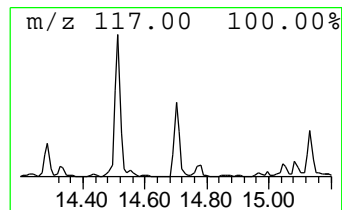
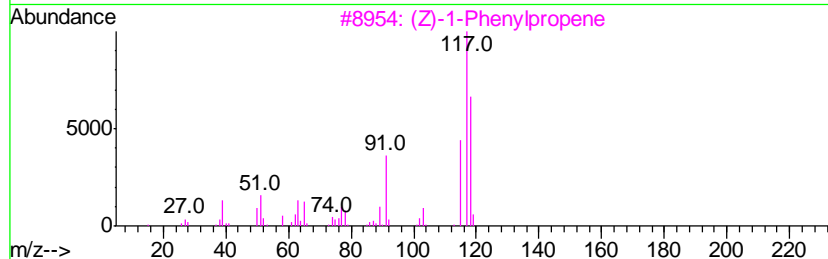
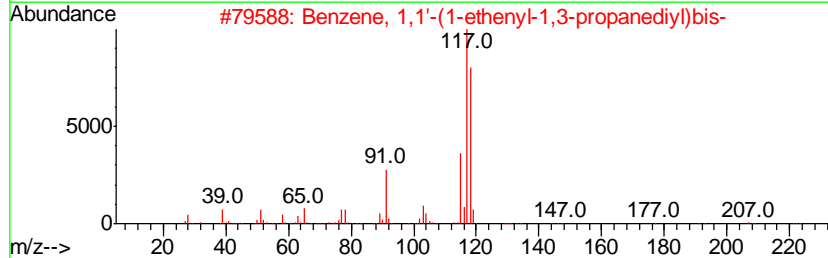
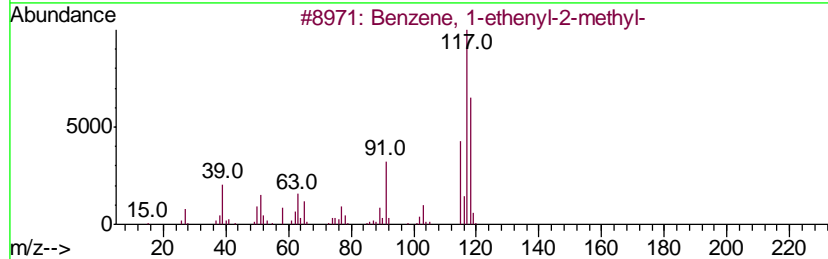
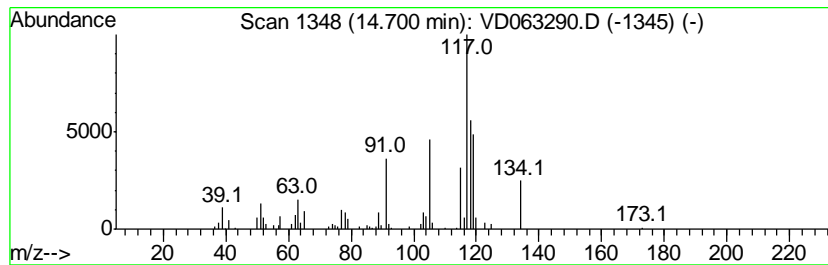
Quant Method : Z:\VOASRV\HPCHEM1\MSVOA_D\METHOD\82D072919S.M
 Quant Title : SW846 8260

TIC Library : C:\DATABASE\NIST11.L
 TIC Integration Parameters: LSCINT.P

 Peak Number 2 Benzene, 1-ethenyl-2-methyl- Concentration Rank 3

R.T.	EstConc	Area	Relative to ISTD	R.T.
14.70	6.08 ug/l	340882	1,4-Dichlorobenzene-d4	14.51

Hit#	of	Tentative ID	MW	MolForm	CAS#	Qual
1	5	Benzene, 1-ethenyl-2-methyl-	118	C9H10	000611-15-4	70
2		Benzene, 1,1'-(1-ethenyl-1,3-pro...	222	C17H18	061141-97-7	58
3		(Z)-1-Phenylpropene	118	C9H10	000766-90-5	55
4		Benzene, cyclopropyl-	118	C9H10	000873-49-4	55
5		Benzene, 1-propenyl-	118	C9H10	000637-50-3	55



Data Path : Z:\VOASRV\HPCHEM1\MSVOA D\DATA\VD080119\
 Data File : VD063290.D
 Acq On : 1 Aug 2019 13:02
 Operator : VA/AP
 Sample : K4106-01
 Misc : 5.05µ/5ml/MSVOA D/SOIL
 ALS Vial : 7 Sample Multiplier: 1

Instrument :
 MSVOA_D
 ClientSampled :
 WC-01

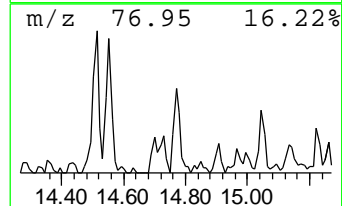
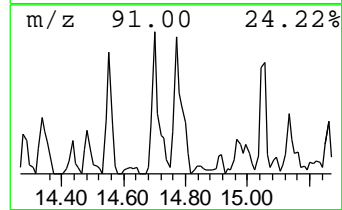
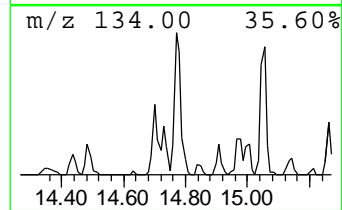
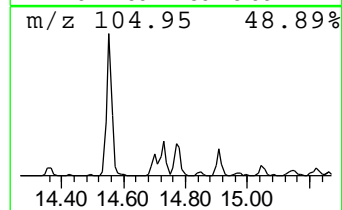
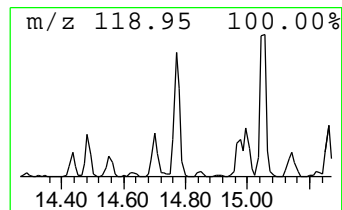
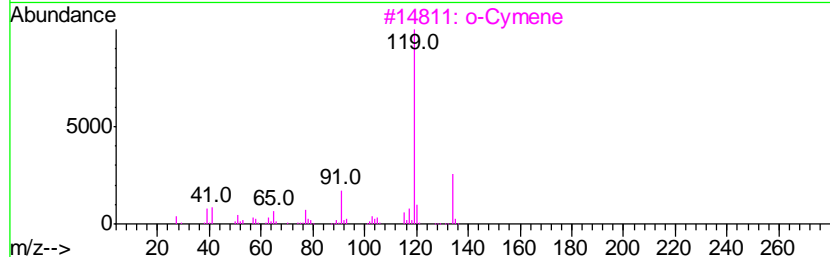
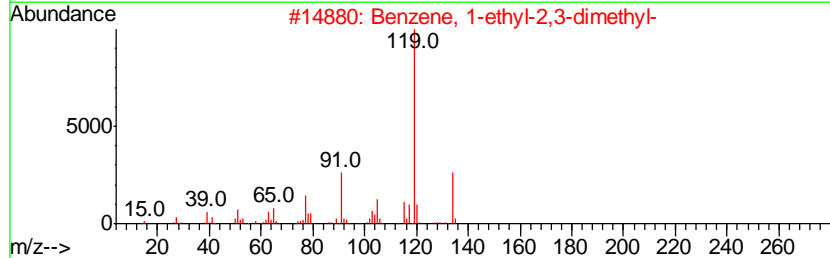
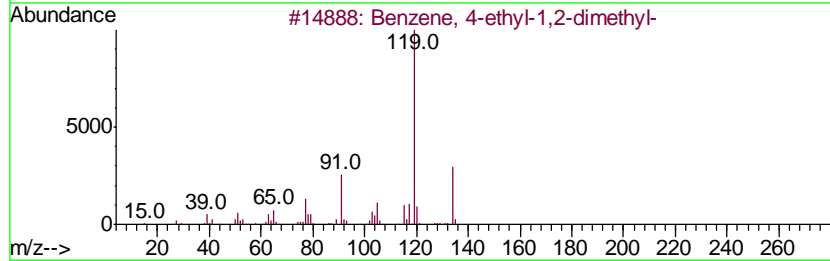
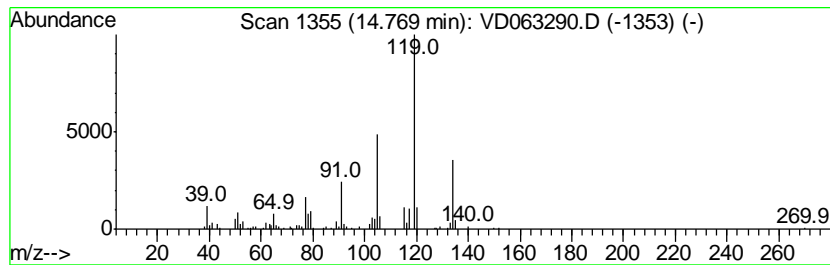
Quant Method : Z:\VOASRV\HPCHEM1\MSVOA_D\METHOD\82D072919S.M
 Quant Title : SW846 8260

TIC Library : C:\DATABASE\NIST11.L
 TIC Integration Parameters: LSCINT.P

 Peak Number 3 Benzene, 4-ethyl-1,2-dimethyl- Concentration Rank 4

R.T.	EstConc	Area	Relative to ISTD	R.T.
14.77	5.60 ug/l	314013	1,4-Dichlorobenzene-d4	14.51

Hit#	of	Tentative ID	MW	MolForm	CAS#	Qual
1	5	Benzene, 4-ethyl-1,2-dimethyl-	134	C10H14	000934-80-5	94
2		Benzene, 1-ethyl-2,3-dimethyl-	134	C10H14	000933-98-2	94
3		o-Cymene	134	C10H14	000527-84-4	94
4		Benzene, 1-ethyl-2,4-dimethyl-	134	C10H14	000874-41-9	93
5		Benzene, 1-ethyl-3,5-dimethyl-	134	C10H14	000934-74-7	91



Data Path : Z:\VOASRV\HPCHEM1\MSVOA D\DATA\VD080119\
 Data File : VD063290.D
 Acq On : 1 Aug 2019 13:02
 Operator : VA/AP
 Sample : K4106-01
 Misc : 5.05µ/5ml/MSVOA D/SOIL
 ALS Vial : 7 Sample Multiplier: 1

Instrument :
 MSVOA_D
 ClientSampleID :
 WC-01

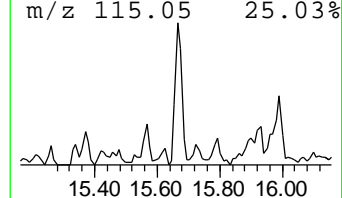
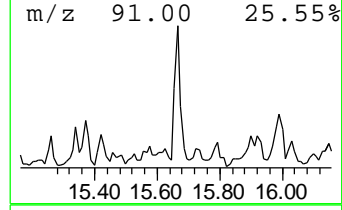
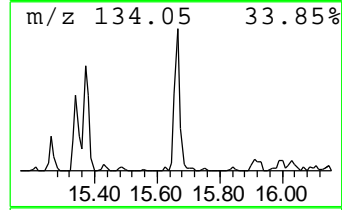
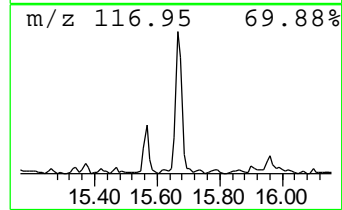
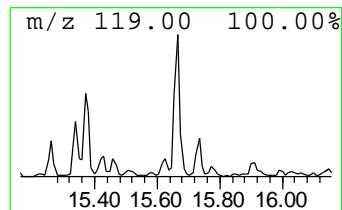
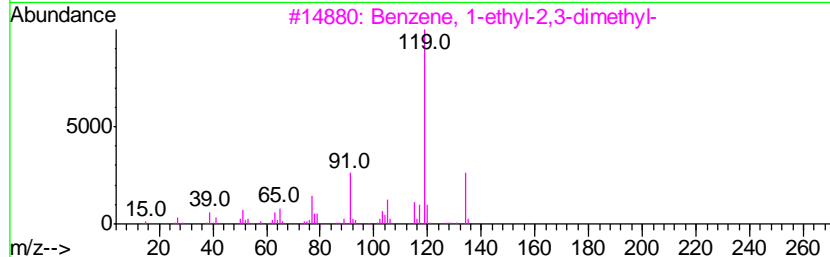
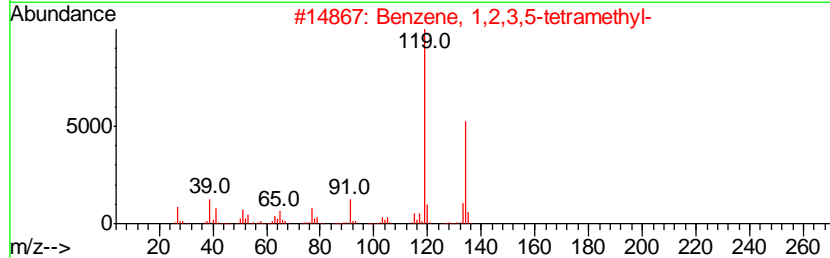
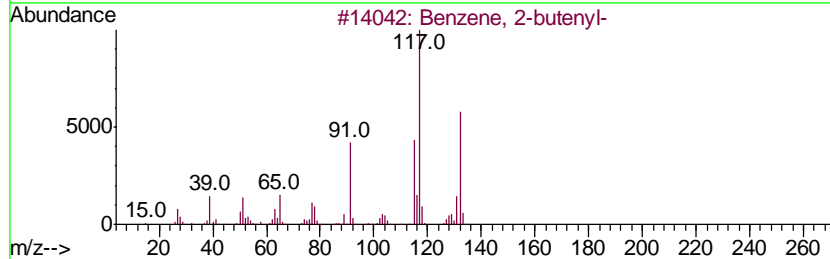
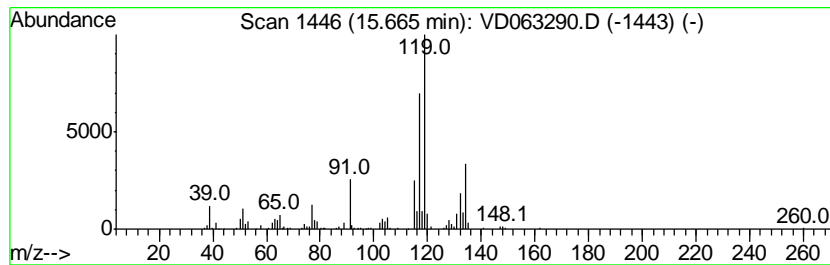
Quant Method : Z:\VOASRV\HPCHEM1\MSVOA_D\METHOD\82D072919S.M
 Quant Title : SW846 8260

TIC Library : C:\DATABASE\NIST11.L
 TIC Integration Parameters: LSCINT.P

 Peak Number 4 Benzene, 2-butenyl- Concentration Rank 1

R.T.	EstConc	Area	Relative to ISTD	R.T.
15.66	9.22 ug/l	516938	1,4-Dichlorobenzene-d4	14.51

Hit#	of	Tentative ID	MW	MolForm	CAS#	Qual
1	5	Benzene, 2-butenyl-	132	C10H12	001560-06-1	83
2		Benzene, 1,2,3,5-tetramethyl-	134	C10H14	000527-53-7	49
3		Benzene, 1-ethyl-2,3-dimethyl-	134	C10H14	000933-98-2	49
4		Benzene, 2-ethenyl-1,4-dimethyl-	132	C10H12	002039-89-6	46
5		Benzene, 1-methyl-2-(2-propenyl)-	132	C10H12	001587-04-8	46



Data Path : Z:\VOASRV\HPCHEM1\MSVOA_D\DATA\VD080119\
 Data File : VD063290.D
 Acq On : 1 Aug 2019 13:02
 Operator : VA/AP
 Sample : K4106-01
 Misc : 5.05g/5ml/MSVOA_D/SOIL
 ALS Vial : 7 Sample Multiplier: 1

Instrument :
 MSVOA_D
 ClientSampleId :
 WC-01

Quant Method : Z:\VOASRV\HPCHEM1\MSVOA_D\METHOD\82D072919S.M
 Quant Title : SW846 8260

TIC Library : C:\DATABASE\NIST11.L
 TIC Integration Parameters: LSCINT.P

TIC Top Hit name	RT	EstConc	Units	Response	--Internal Standard--			
					#	RT	Resp	Conc
Mesitylene	14.08	8.2	ug/l	460760	4	14.51	2804010	50.0
Benzene, 1-etheny...	14.70	6.1	ug/l	340882	4	14.51	2804010	50.0
Benzene, 4-ethyl-...	14.77	5.6	ug/l	314013	4	14.51	2804010	50.0
Benzene, 2-butenyl-	15.66	9.2	ug/l	516938	4	14.51	2804010	50.0