

Data Path : Z:\VOASRV\HPCHEM1\MSVOA_D\DATA\VD080219\
 Data File : VD063318.D
 Acq On : 2 Aug 2019 15:55
 Operator : VA/AP
 Sample : K4120-10RE
 Misc : 4.89g/5ml/MSVOA_D/SOIL
 ALS Vial : 13 Sample Multiplier: 1

Instrument :
 MSVOA_D
 ClientSampleId :
 SW-4RE

Quant Time: Aug 04 03:38:51 2019
 Quant Method : Z:\VOASRV\HPCHEM1\MSVOA_D\METHOD\82D072919S.M
 Quant Title : SW846 8260
 QLast Update : Tue Jul 30 03:04:50 2019
 Response via : Initial Calibration

Internal Standards	R.T.	QIon	Response	Conc	Units	Dev(Min)
1) Pentafluorobenzene	7.04	168	806940	50.00	ug/l	0.00
34) 1,4-Difluorobenzene	8.20	114	1199102	50.00	ug/l	0.00
63) Chlorobenzene-d5	12.36	117	791082	50.00	ug/l	0.00
72) 1,4-Dichlorobenzene-d4	14.51	152	192395	50.00	ug/l	0.00

System Monitoring Compounds

33) 1,2-Dichloroethane-d4	7.44	65	493267	55.09	ug/l	0.00
Spiked Amount				50.000		
			Recovery	=	110.18%	
35) Dibromofluoromethane	6.91	113	566030	55.29	ug/l	0.00
Spiked Amount				50.000		
			Recovery	=	110.58%	
50) Toluene-d8	10.40	98	992060	43.30	ug/l	0.00
Spiked Amount				50.000		
			Recovery	=	86.60%	
62) 4-Bromofluorobenzene	13.55	95	266454	25.52	ug/l	0.00
Spiked Amount				50.000		
			Recovery	=	51.04%	

Target Compounds

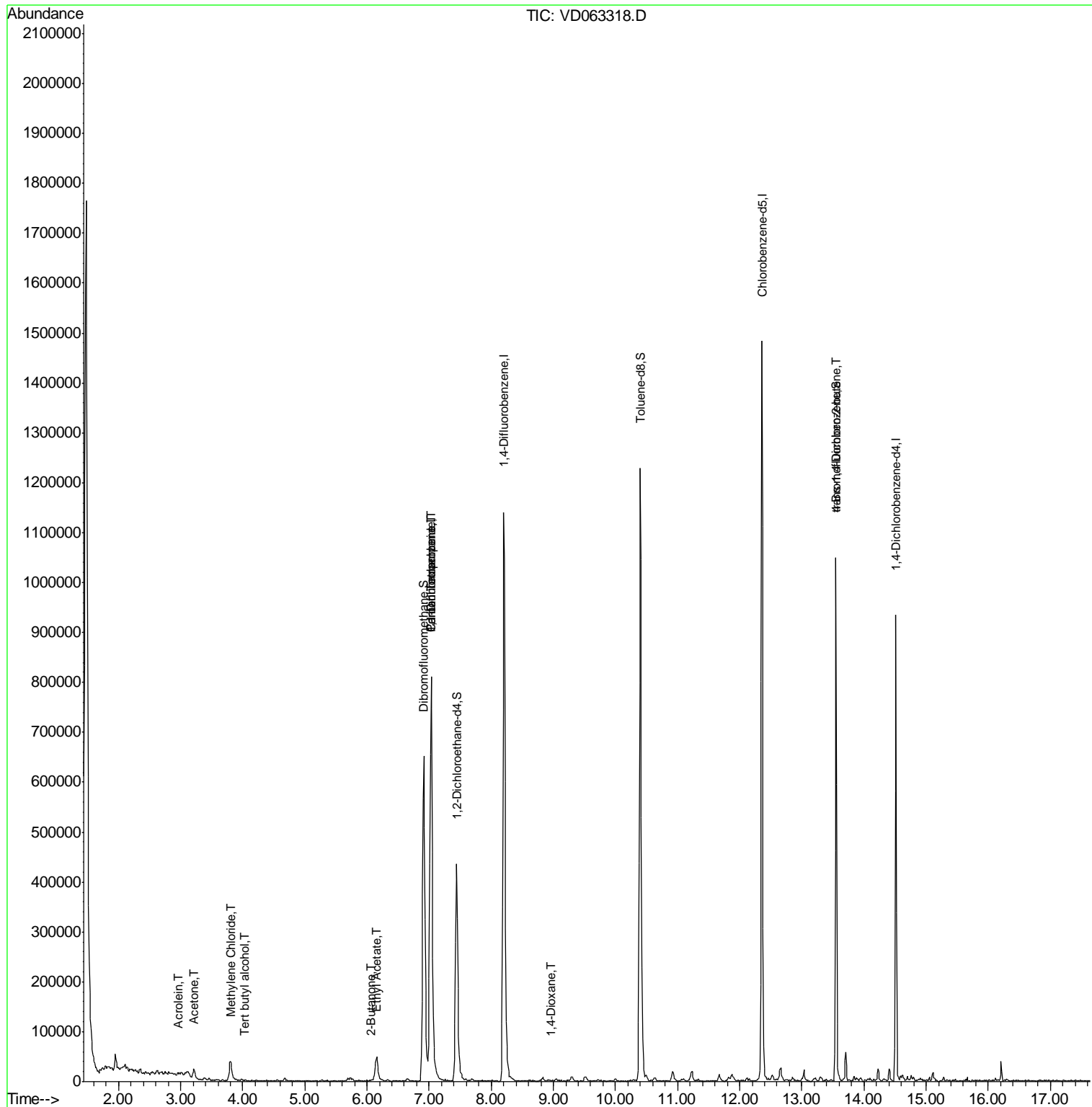
						Qvalue
11) Tert butyl alcohol	4.04	59	760	1.934	ug/l #	69
13) Acrolein	2.95	56	446	1.179	ug/l	98
16) Acetone	3.21	43	45046	25.821	ug/l	98
20) Methylene Chloride	3.81	84	24928	3.535	ug/l	92
25) 2-Butanone	6.08	43	2757	1.575	ug/l #	56
36) 1,1-Dichloropropene	7.03	75	57847	5.286	ug/l #	55
37) Ethyl Acetate	6.15	43	4996	1.016	ug/l #	71
38) Carbon Tetrachloride	7.04	117	76556	4.647	ug/l #	14
49) 1,4-Dioxane	8.97	88	220	2.269	ug/l #	1
81) trans-1,4-Dichloro-2-buten	13.55	75	118909	185.305	ug/l #	3

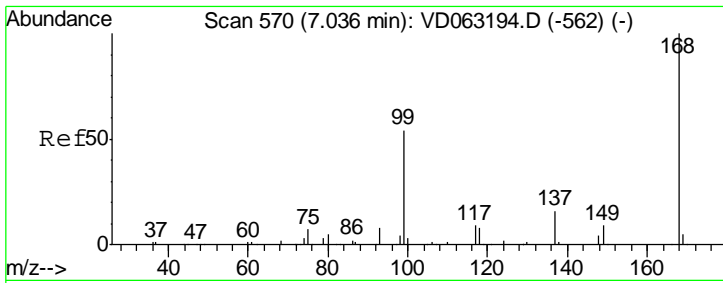
(#) = qualifier out of range (m) = manual integration (+) = signals summed

Data Path : Z:\VOASRV\HPCHEM1\MSVOA_D\DATA\VD080219\
 Data File : VD063318.D
 Acq On : 2 Aug 2019 15:55
 Operator : VA/AP
 Sample : K4120-10RE
 Misc : 4.89g/5ml/MSVOA_D/SOIL
 ALS Vial : 13 Sample Multiplier: 1

Instrument :
 MSVOA_D
 Client Sampled :
 SW-4RE

Quant Time: Aug 04 03:38:51 2019
 Quant Method : Z:\VOASRV\HPCHEM1\MSVOA_D\METHOD\82D072919S.M
 Quant Title : SW846 8260
 QLast Update : Tue Jul 30 03:04:50 2019
 Response via : Initial Calibration

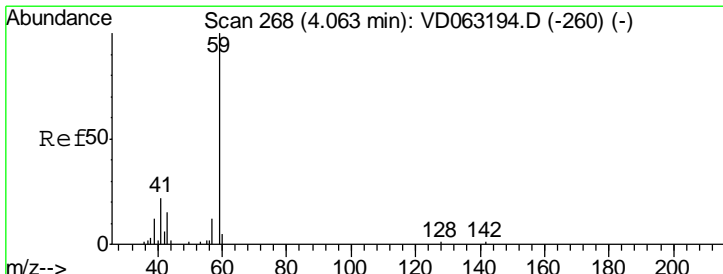
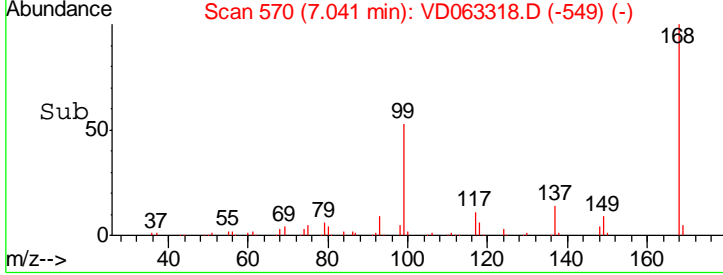
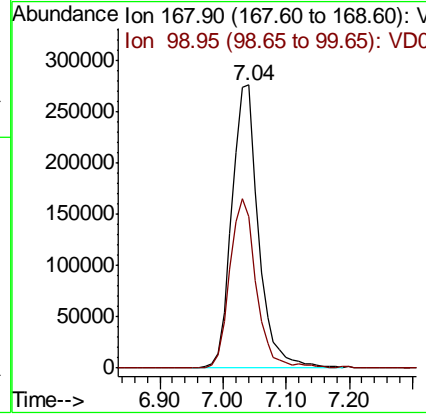
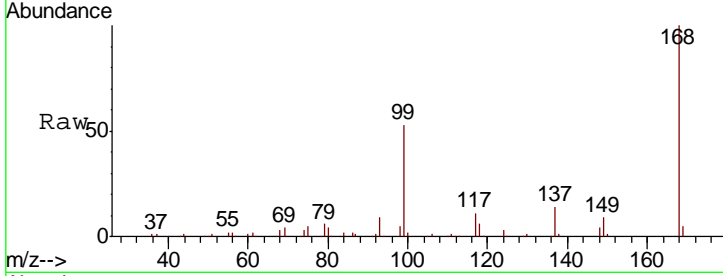




#1
 Pentafluorobenzene
 Concen: 50.000 ug/l
 RT: 7.04 min Scan# 570
 Delta R.T. 0.00 min
 Lab File: VD063318.D
 Acq: 2 Aug 2019 15:55

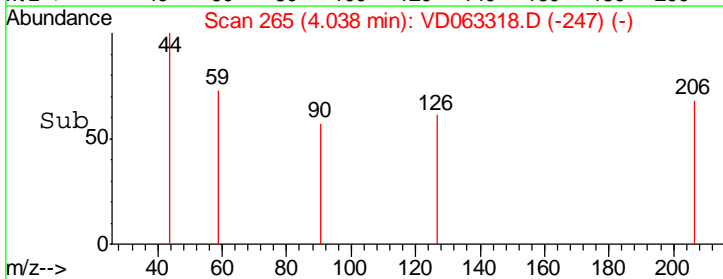
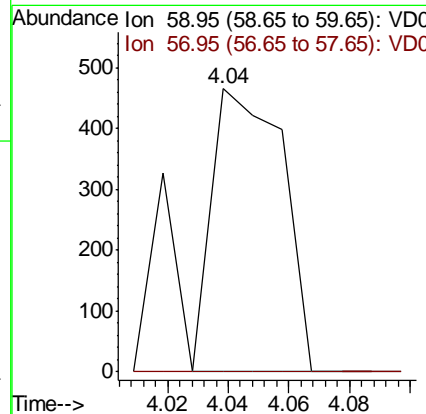
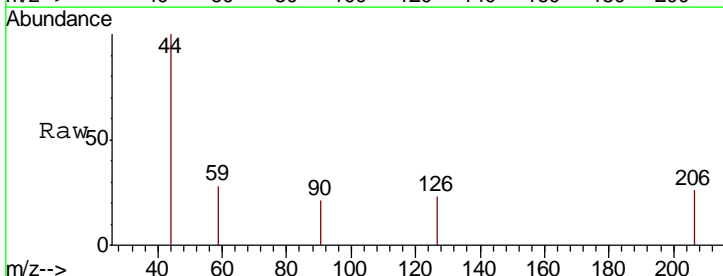
Instrument : MSVOA_D
 ClientSampled : SW-4RE

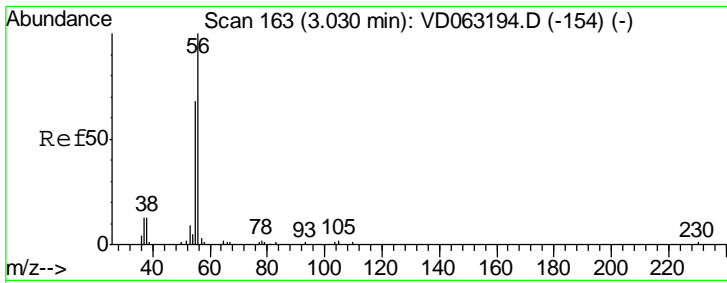
Tgt Ion: 168 Resp: 806940
 Ion Ratio Lower Upper
 168 100
 99 53.4 43.7 65.5



#11
 Tert butyl alcohol
 Concen: 1.934 ug/l
 RT: 4.04 min Scan# 265
 Delta R.T. -0.03 min
 Lab File: VD063318.D
 Acq: 2 Aug 2019 15:55

Tgt Ion: 59 Resp: 760
 Ion Ratio Lower Upper
 59 100
 57 0.0 9.6 14.4#

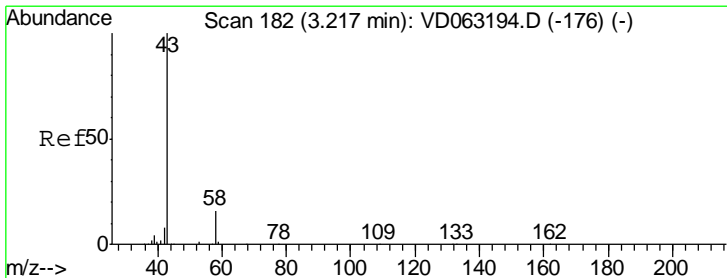
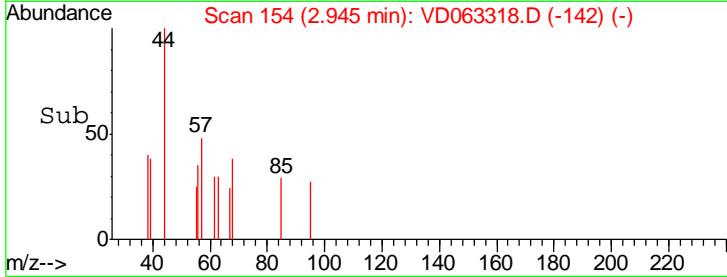
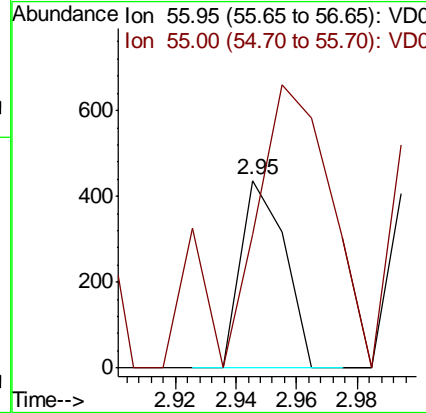
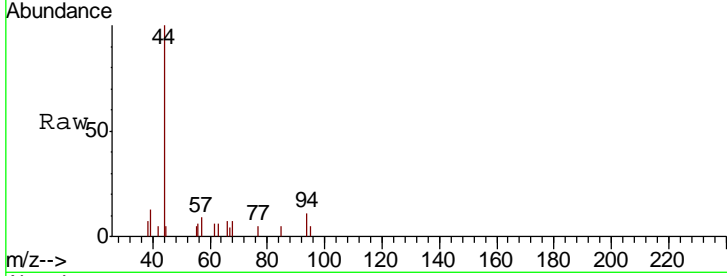




#13
 Acrolein
 Concen: 1.179 ug/l
 RT: 2.95 min Scan# 154
 Delta R.T. -0.08 min
 Lab File: VD063318.D
 Acq: 2 Aug 2019 15:55

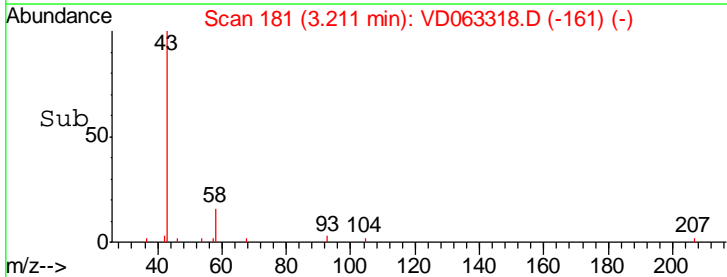
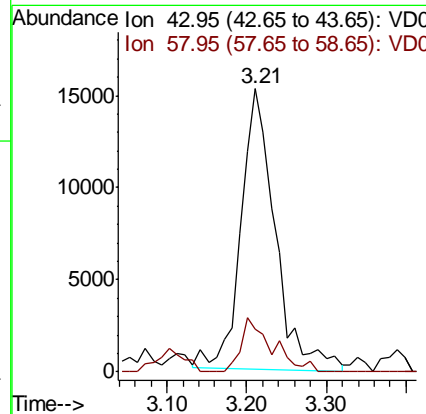
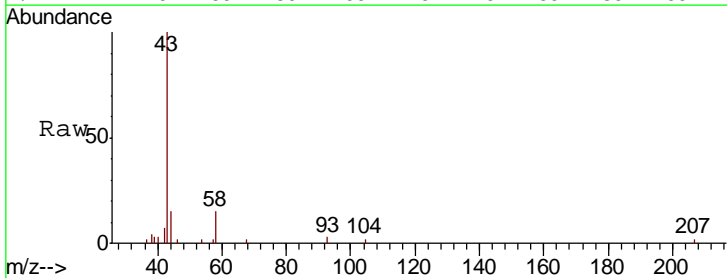
Instrument :
 MSVOA_D
 ClientSampled :
 SW-4RE

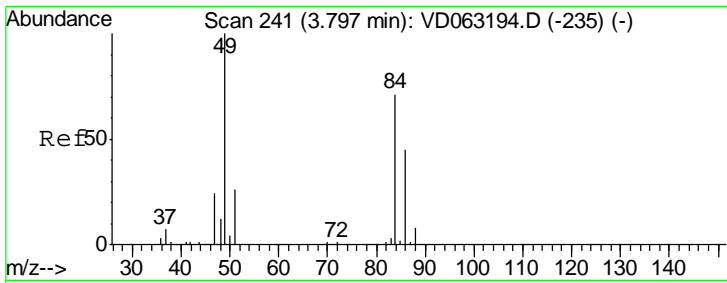
Tgt Ion: 56 Resp: 446
 Ion Ratio Lower Upper
 56 100
 55 70.9 55.3 82.9



#16
 Acetone
 Concen: 25.821 ug/l
 RT: 3.21 min Scan# 181
 Delta R.T. -0.01 min
 Lab File: VD063318.D
 Acq: 2 Aug 2019 15:55

Tgt Ion: 43 Resp: 45046
 Ion Ratio Lower Upper
 43 100
 58 15.2 13.0 19.4



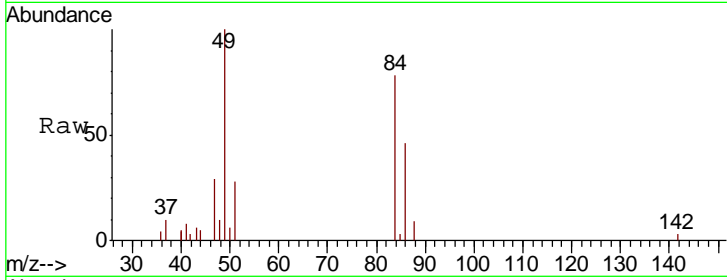


#20
 Methylene Chloride
 Concen: 3.535 ug/l
 RT: 3.81 min Scan# 242
 Delta R.T. 0.01 min
 Lab File: VD063318.D
 Acq: 2 Aug 2019 15:55

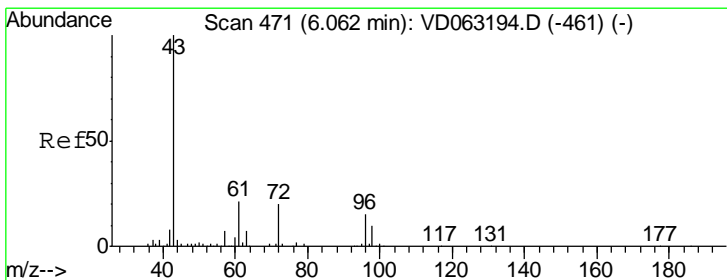
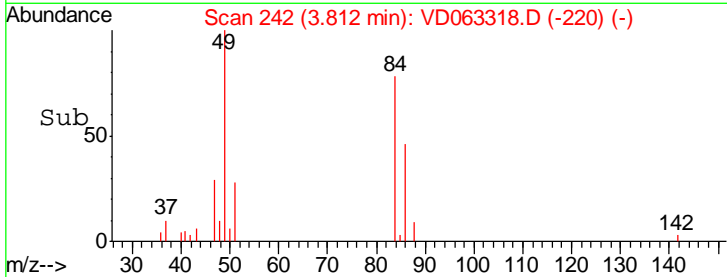
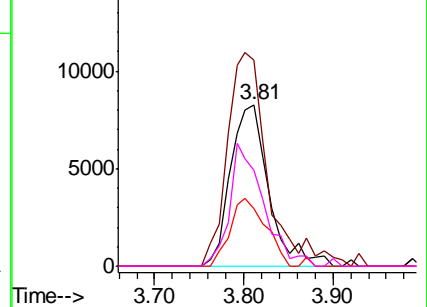
Instrument :
 MSVOA_D
 ClientSampled :
 SW-4RE

Tgt Ion: 84 Resp: 24928

Ion	Ratio	Lower	Upper
84	100		
49	127.5	112.5	168.7
51	35.4	29.6	44.4
86	59.2	50.4	75.6



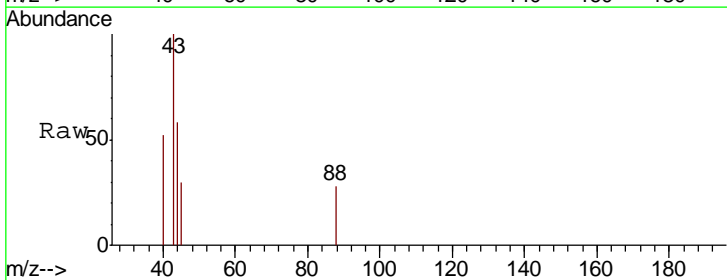
Abundance Ion 83.95 (83.65 to 84.65): VDC
 Ion 48.90 (48.60 to 49.60): VDC
 Ion 50.90 (50.60 to 51.60): VDC
 Ion 85.90 (85.60 to 86.60): VDC



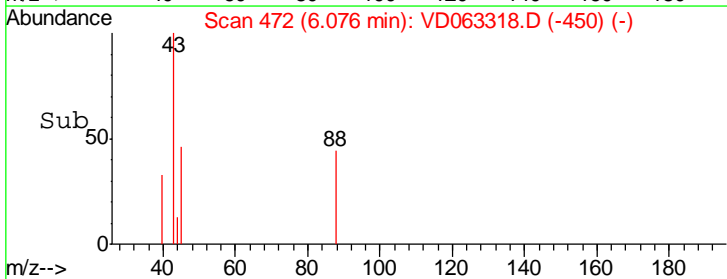
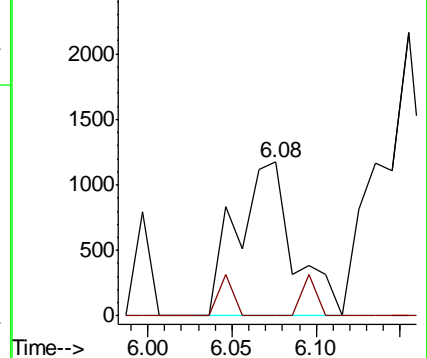
#25
 2-Butanone
 Concen: 1.575 ug/l
 RT: 6.08 min Scan# 472
 Delta R.T. 0.01 min
 Lab File: VD063318.D
 Acq: 2 Aug 2019 15:55

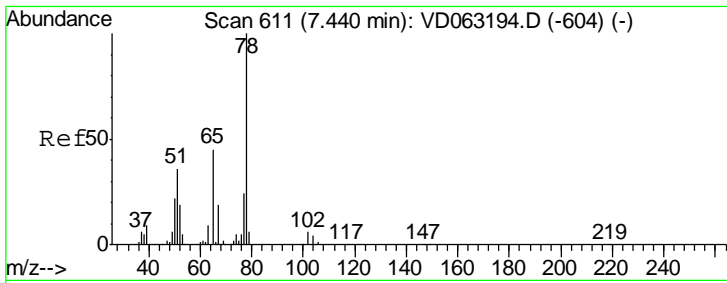
Tgt Ion: 43 Resp: 2757

Ion	Ratio	Lower	Upper
43	100		
72	0.0	16.3	24.5#



Abundance Ion 42.95 (42.65 to 43.65): VDC
 Ion 72.00 (71.70 to 72.70): VDC

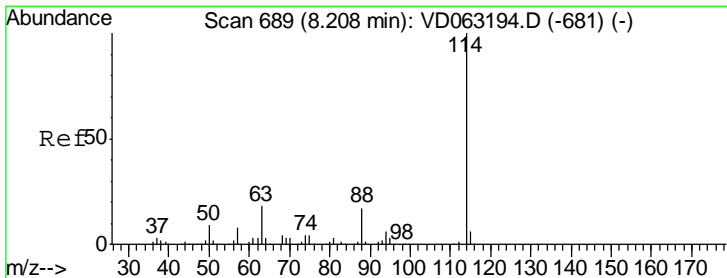
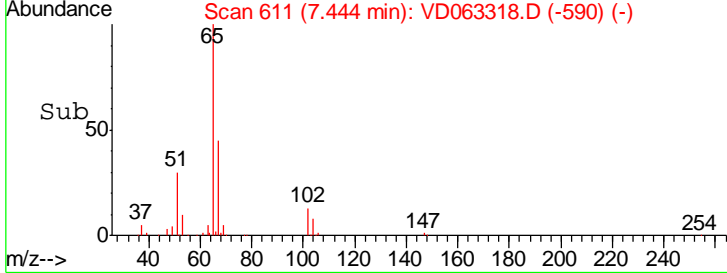
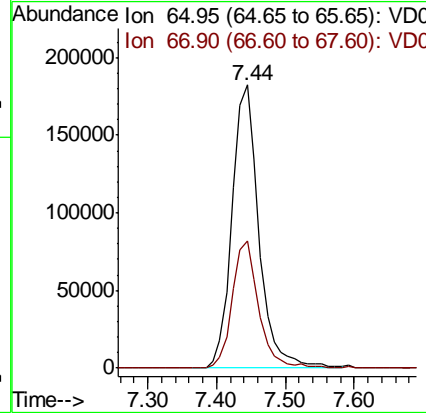
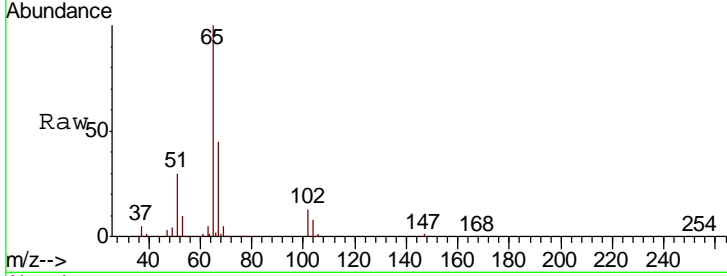




#33
 1,2-Dichloroethane-d4
 Concen: 55.090 ug/l
 RT: 7.44 min Scan# 611
 Delta R.T. 0.00 min
 Lab File: VD063318.D
 Acq: 2 Aug 2019 15:55

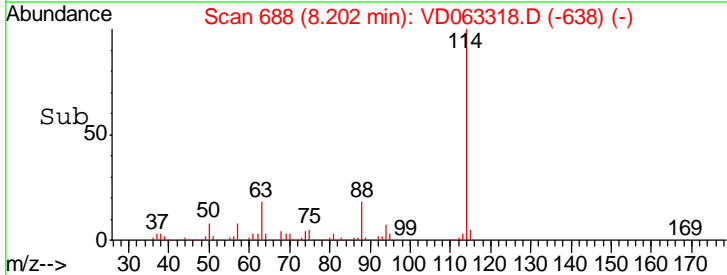
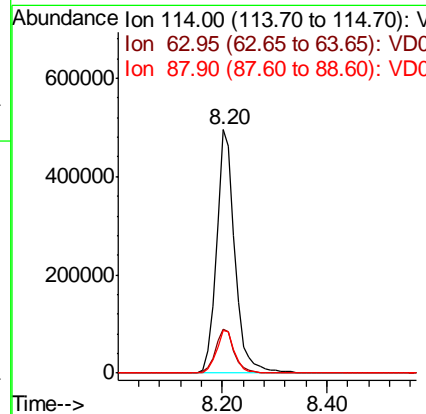
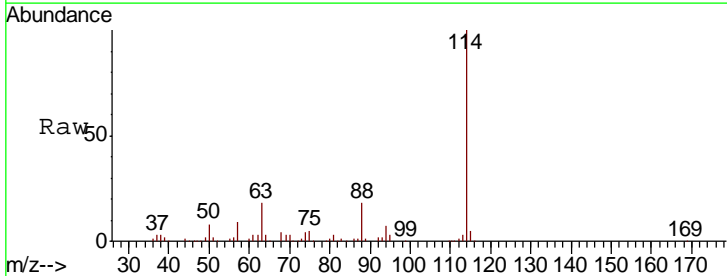
Instrument :
 MSVOA_D
ClientSampled :
 SW-4RE

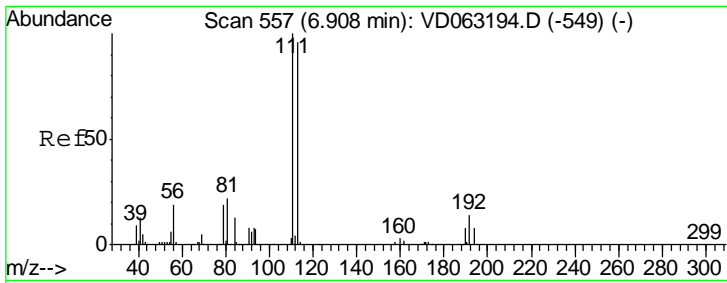
Tgt Ion	Resp	Lower	Upper
65	493267		
67	44.9	0.0	85.8



#34
 1,4-Difluorobenzene
 Concen: 50.000 ug/l
 RT: 8.20 min Scan# 688
 Delta R.T. -0.01 min
 Lab File: VD063318.D
 Acq: 2 Aug 2019 15:55

Tgt Ion	Resp	Lower	Upper
114	1199102		
63	18.2	0.0	35.2
88	17.8	0.0	34.6

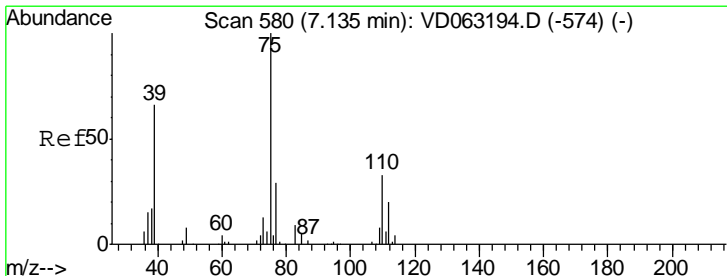
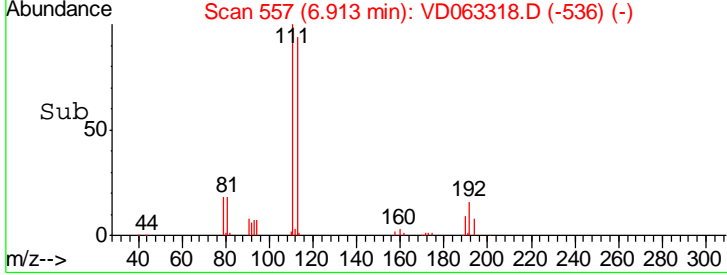
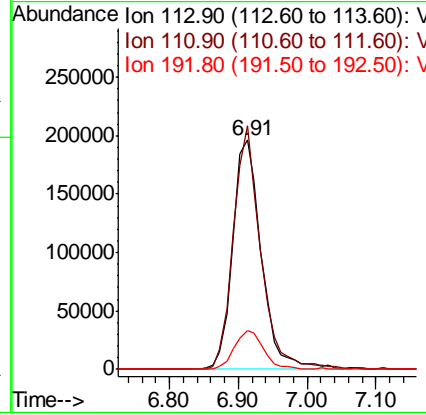
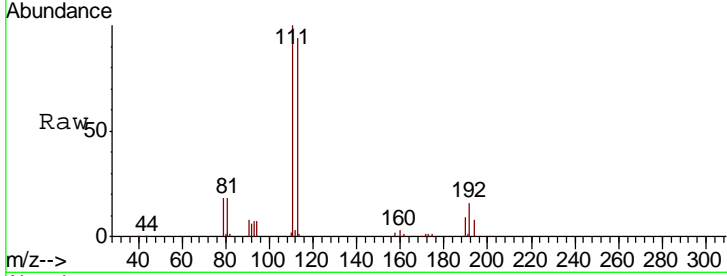




#35
 Dibromofluoromethane
 Concen: 55.288 ug/l
 RT: 6.91 min Scan# 557
 Delta R.T. 0.00 min
 Lab File: VD063318.D
 Acq: 2 Aug 2019 15:55

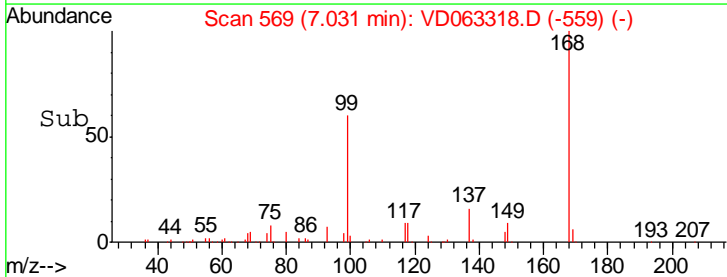
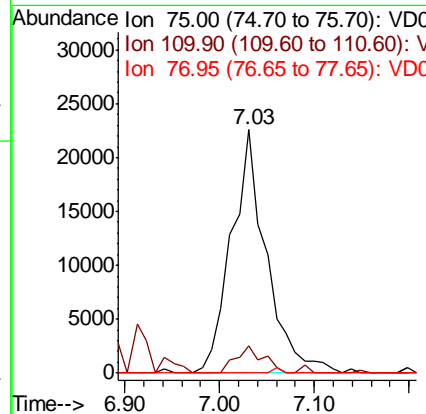
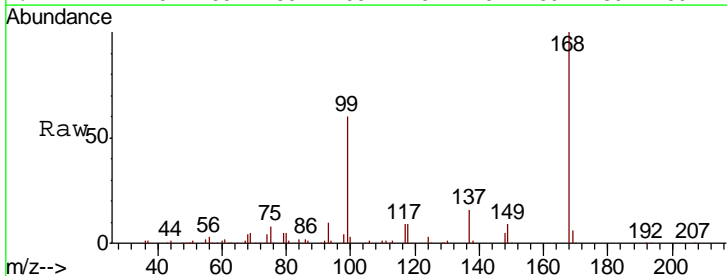
Instrument :
 MSVOA_D
 ClientSampled :
 SW-4RE

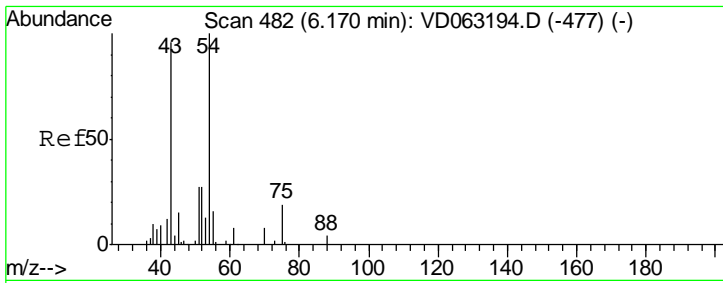
Tgt Ion	Resp	Lower	Upper
113	100		
111	106.1	83.2	124.8
192	17.2	11.8	17.8



#36
 1,1-Dichloropropene
 Concen: 5.286 ug/l
 RT: 7.03 min Scan# 569
 Delta R.T. -0.10 min
 Lab File: VD063318.D
 Acq: 2 Aug 2019 15:55

Tgt Ion	Resp	Lower	Upper
75	100		
110	11.4	16.1	48.2#
77	0.0	22.7	34.1#

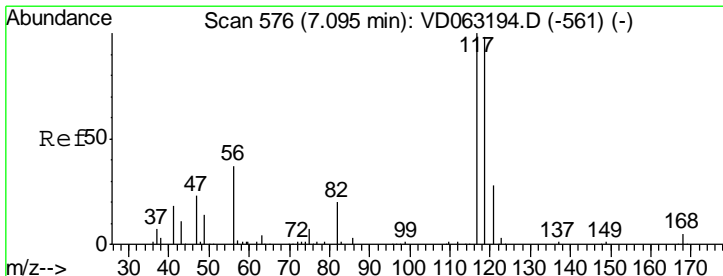
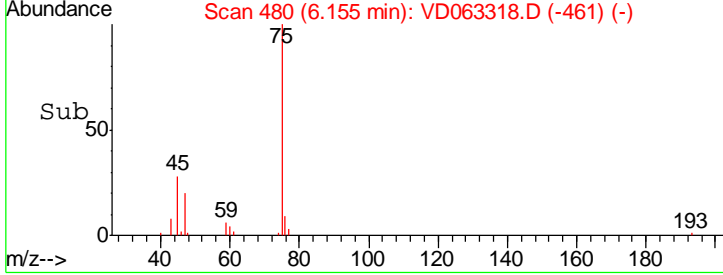
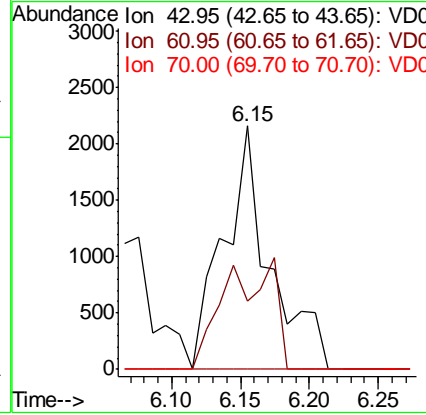
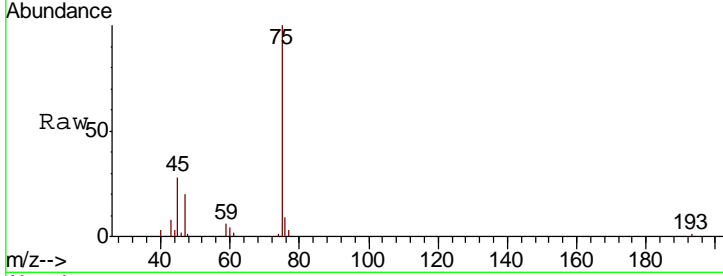




#37
 Ethyl Acetate
 Concen: 1.016 ug/l
 RT: 6.15 min Scan# 480
 Delta R.T. -0.02 min
 Lab File: VD063318.D
 Acq: 2 Aug 2019 15:55

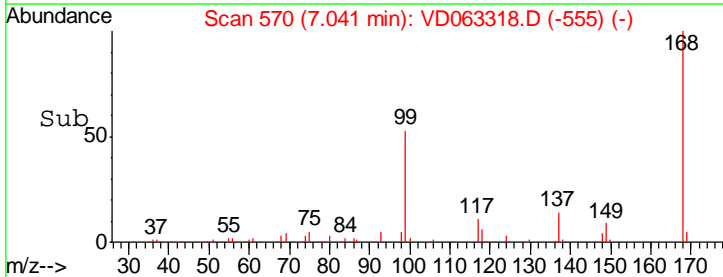
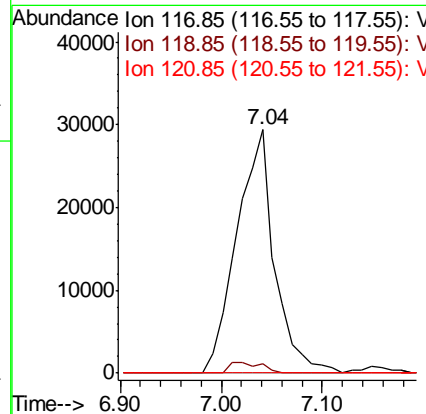
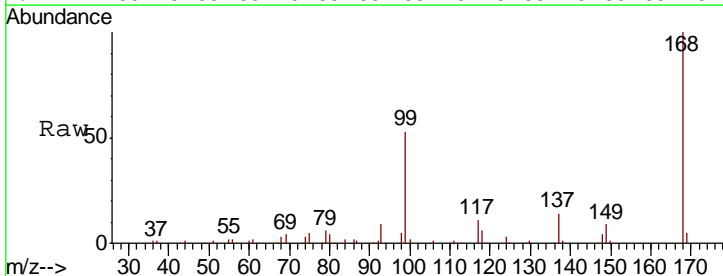
Instrument :
 MSVOA_D
 ClientSampled :
 SW-4RE

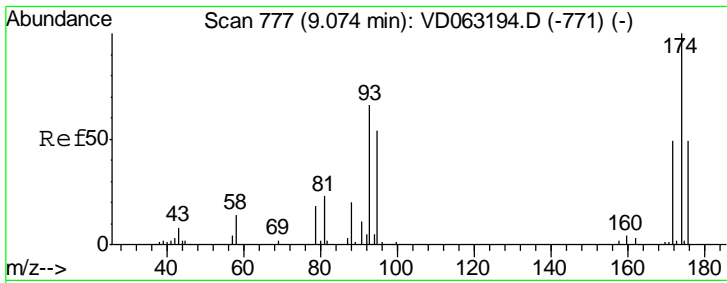
Tgt Ion	Resp	Lower	Upper
43	100		
61	27.8	11.3	16.9#
70	0.0	5.1	7.7#



#38
 Carbon Tetrachloride
 Concen: 4.647 ug/l
 RT: 7.04 min Scan# 570
 Delta R.T. -0.05 min
 Lab File: VD063318.D
 Acq: 2 Aug 2019 15:55

Tgt Ion	Resp	Lower	Upper
117	100		
119	3.7	78.2	117.2#
121	0.0	22.1	33.1#

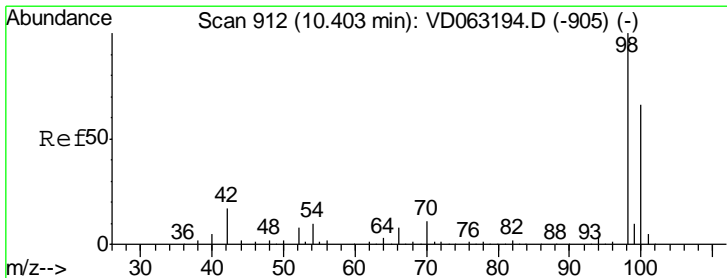
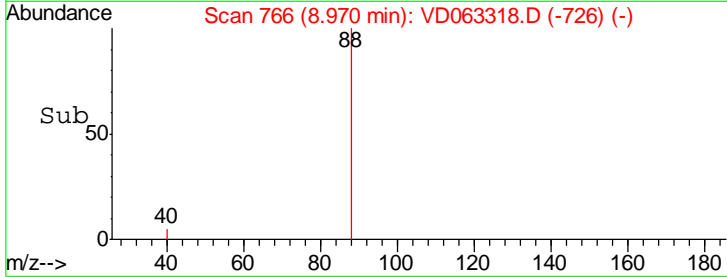
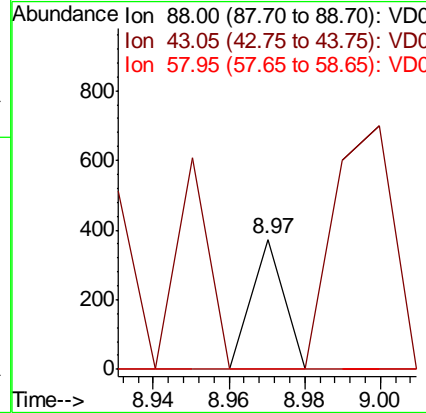
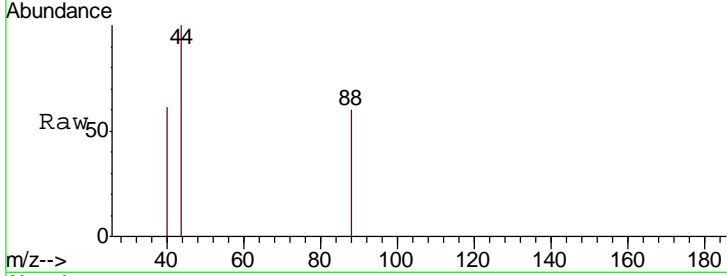




#49
 1,4-Dioxane
 Concen: 2.269 ug/l
 RT: 8.97 min Scan# 766
 Delta R.T. -0.10 min
 Lab File: VD063318.D
 Acq: 2 Aug 2019 15:55

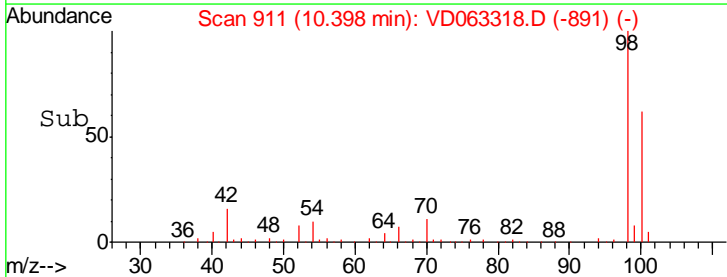
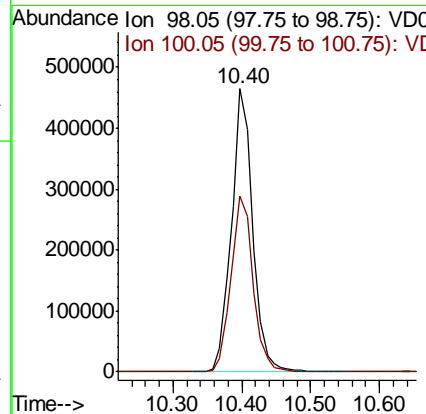
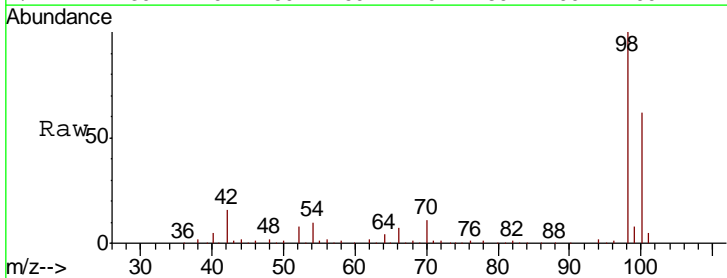
Instrument :
 MSVOA_D
 ClientSampled :
 SW-4RE

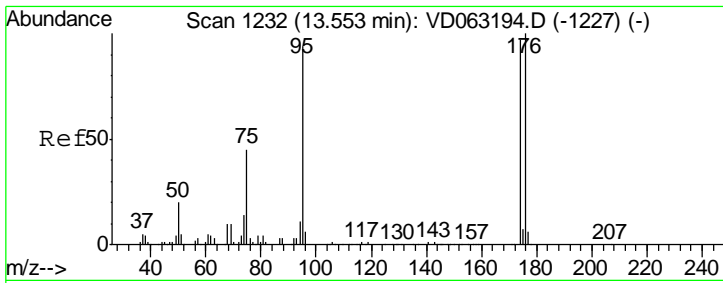
Tgt Ion	Resp	Lower	Upper
88	100		
43	167.0	30.7	46.1#
58	0.0	56.5	84.7#



#50
 Toluene-d8
 Concen: 43.299 ug/l
 RT: 10.40 min Scan# 911
 Delta R.T. -0.01 min
 Lab File: VD063318.D
 Acq: 2 Aug 2019 15:55

Tgt Ion	Resp	Lower	Upper
98	100		
100	62.2	53.2	79.8

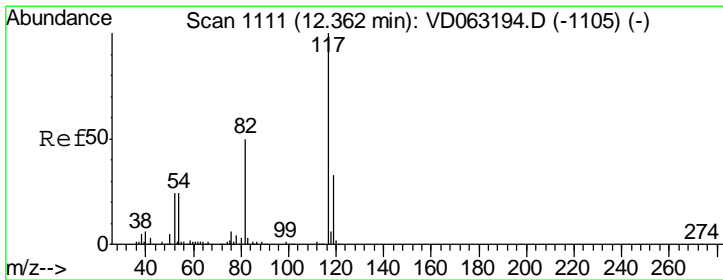
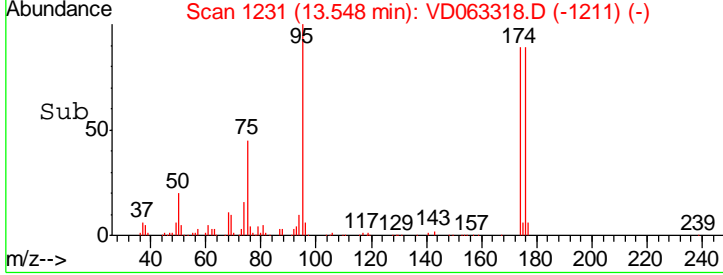
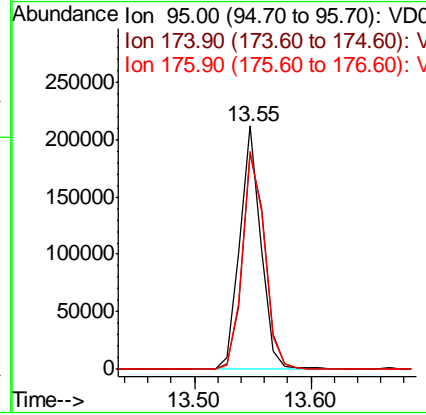
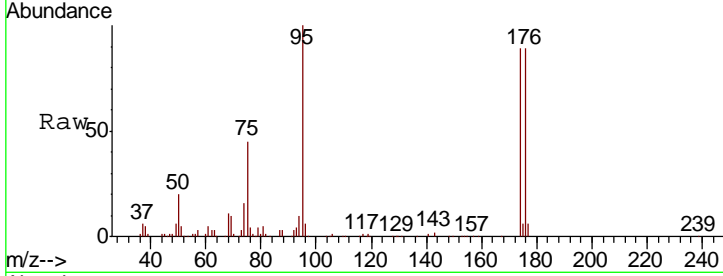




#62
 4-Bromofluorobenzene
 Concen: 25.520 ug/l
 RT: 13.55 min Scan# 1231
 Delta R.T. -0.01 min
 Lab File: VD063318.D
 Acq: 2 Aug 2019 15:55

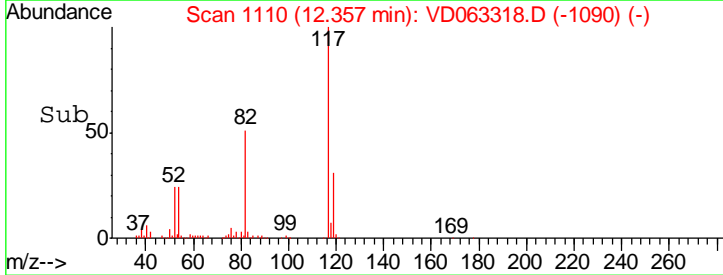
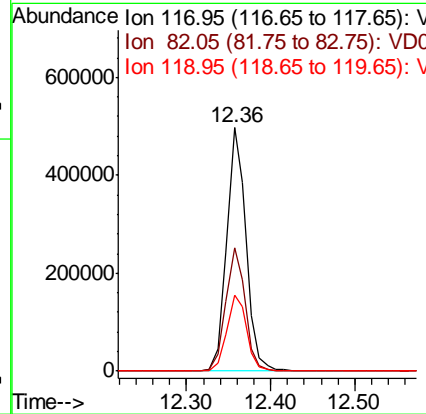
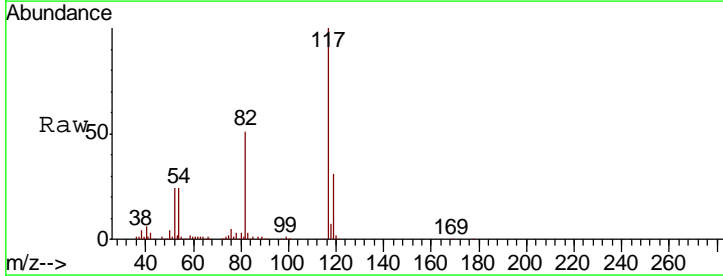
Instrument : MSVOA_D
 ClientSampled : SW-4RE

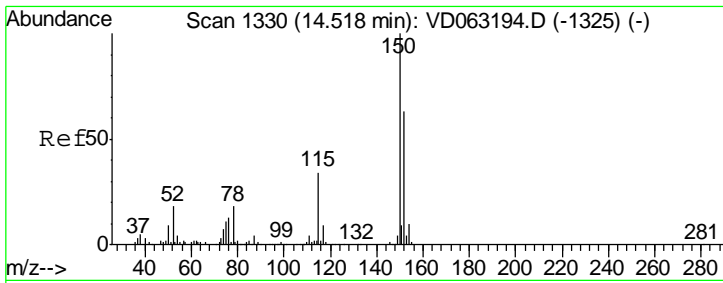
Tgt Ion	Resp	Lower	Upper
95	100		
174	88.5	0.0	205.4
176	89.5	0.0	211.8



#63
 Chlorobenzene-d5
 Concen: 50.000 ug/l
 RT: 12.36 min Scan# 1110
 Delta R.T. -0.01 min
 Lab File: VD063318.D
 Acq: 2 Aug 2019 15:55

Tgt Ion	Resp	Lower	Upper
117	100		
82	50.7	40.1	60.1
119	31.3	26.5	39.7

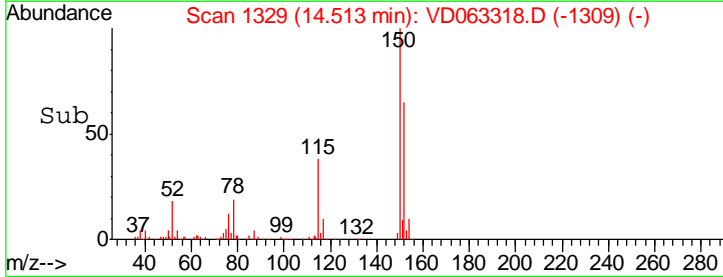
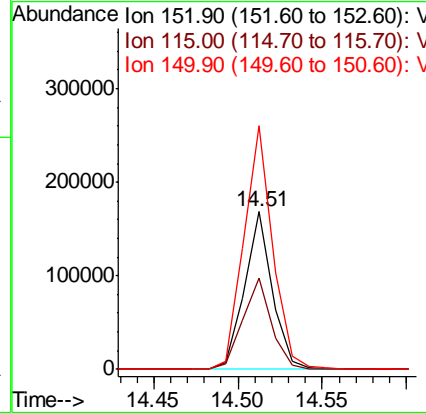
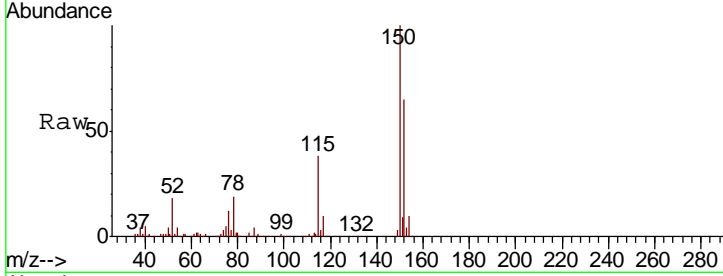




#72
 1,4-Dichlorobenzene-d4
 Concen: 50.000 ug/l
 RT: 14.51 min Scan# 1329
 Delta R.T. -0.01 min
 Lab File: VD063318.D
 Acq: 2 Aug 2019 15:55

Instrument :
 MSVOA_D
 ClientSampled :
 SW-4RE

Tgt Ion	Resp	Lower	Upper
152	100		
115	58.3	27.5	82.4
150	154.6	0.0	320.6



#81
 trans-1,4-Dichloro-2-butene
 Concen: 185.305 ug/l
 RT: 13.55 min Scan# 1231
 Delta R.T. 0.08 min
 Lab File: VD063318.D
 Acq: 2 Aug 2019 15:55

Tgt Ion	Resp	Lower	Upper
75	100		
53	0.3	94.9	142.3#
89	0.0	37.4	56.0#

