

Data Path : Z:\voasrv\HPCHEM1\MSVOA_D\Data\VD080224\
 Data File : VD079540.D
 Acq On : 02 Aug 2024 14:14
 Operator : RP/MD
 Sample : VD0802SBL01
 Misc : 5.00G/5.0ml/MSVOA_D/SOIL
 ALS Vial : 5 Sample Multiplier: 1

Instrument :
 MSVOA_D
 ClientSampleId :
 VD0802SBL01

Quant Time: Aug 03 00:30:53 2024
 Quant Method : Z:\voasrv\HPCHEM1\MSVOA_D\Method\82D072924S.M
 Quant Title : SW846 8260
 QLast Update : Tue Jul 30 03:50:47 2024
 Response via : Initial Calibration

Compound	R.T.	QIon	Response	Conc	Units	Dev(Min)

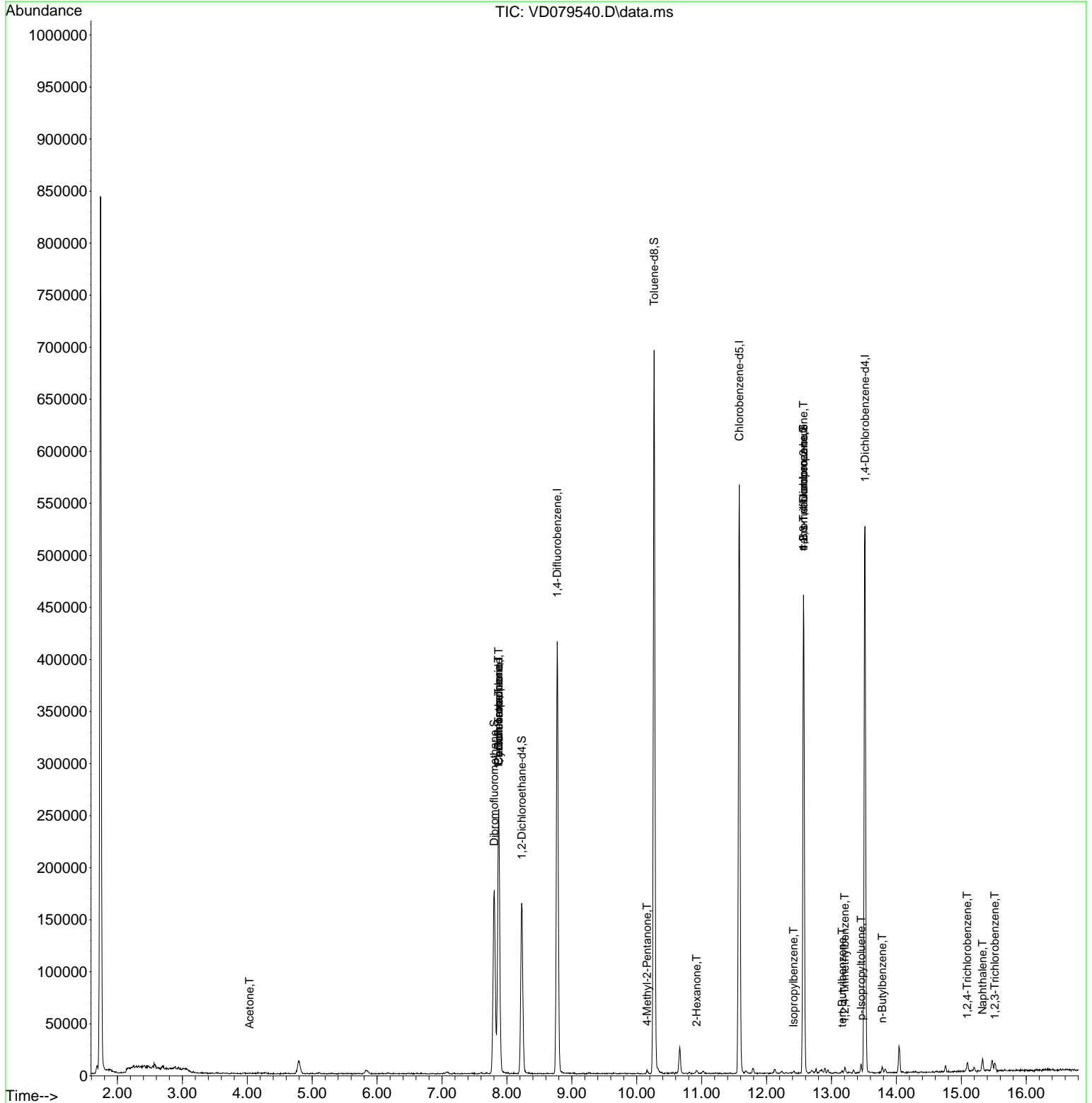
Internal Standards						
1) Pentafluorobenzene	7.875	168	202351	50.000	ug/l	0.00
34) 1,4-Difluorobenzene	8.775	114	367957	50.000	ug/l	0.00
63) Chlorobenzene-d5	11.581	117	341540	50.000	ug/l	0.00
72) 1,4-Dichlorobenzene-d4	13.516	152	148979	50.000	ug/l	0.00
System Monitoring Compounds						
33) 1,2-Dichloroethane-d4	8.228	65	127257	61.905	ug/l	0.00
Spiked Amount	50.000	Range 50 - 163	Recovery	=	123.800%	
35) Dibromofluoromethane	7.804	113	128588	51.631	ug/l	0.00
Spiked Amount	50.000	Range 54 - 147	Recovery	=	103.260%	
50) Toluene-d8	10.269	98	482222	49.860	ug/l	0.00
Spiked Amount	50.000	Range 58 - 134	Recovery	=	99.720%	
62) 4-Bromofluorobenzene	12.569	95	132660	47.400	ug/l	0.00
Spiked Amount	50.000	Range 30 - 143	Recovery	=	94.800%	
Target Compounds						
						Qvalue
5) Bromomethane	2.699	94	2053	Below Cal		93
13) Acrolein	3.822	56	56	Below Cal	#	15
16) Acetone	4.034	43	657	1.645	ug/l #	37
20) Methylene Chloride	4.805	84	9598	Below Cal		95
31) Cyclohexane	7.875	56	4839	1.417	ug/l #	22
36) 1,1-Dichloropropene	7.869	75	15998	4.706	ug/l #	47
38) Carbon Tetrachloride	7.875	117	19625	5.492	ug/l #	16
51) 4-Methyl-2-Pentanone	10.157	43	1731	1.294	ug/l	96
59) 2-Hexanone	10.922	43	2204	2.363	ug/l	93
73) Isopropylbenzene	12.416	105	1463	3.749	ug/l	84
76) 1,2,3-Trichloropropane	12.569	75	66496	51.063	ug/l #	100
81) trans-1,4-Dichloro-2-b...	12.569	75	66496	97.392	ug/l #	19
83) tert-Butylbenzene	13.163	119	1077	3.752	ug/l	89
84) 1,2,4-Trimethylbenzene	13.204	105	3313	3.759	ug/l	100
86) p-Isopropyltoluene	13.457	119	1993	4.062	ug/l	94
89) n-Butylbenzene	13.781	91	3011	4.071	ug/l	84
93) 1,2,4-Trichlorobenzene	15.092	180	2894	1.039	ug/l	85
95) Naphthalene	15.328	128	10204	2.116	ug/l #	96
96) 1,2,3-Trichlorobenzene	15.516	180	3168	1.293	ug/l	97

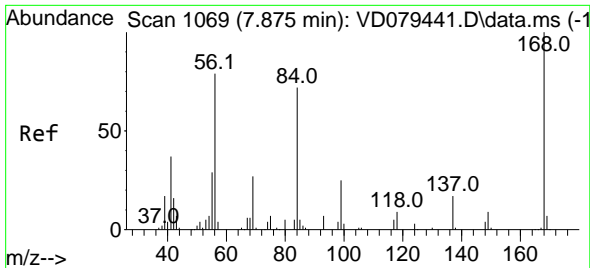
(#) = qualifier out of range (m) = manual integration (+) = signals summed

Data Path : Z:\voasrv\HPCHEM1\MSVOA_D\Data\VD080224\
 Data File : VD079540.D
 Acq On : 02 Aug 2024 14:14
 Operator : RP/MD
 Sample : VD0802SBL01
 Misc : 5.00G/5.0ml/MSVOA_D/SOIL
 ALS Vial : 5 Sample Multiplier: 1

Instrument :
 MSVOA_D
 ClientSampleId :
 VD0802SBL01

Quant Time: Aug 03 00:30:53 2024
 Quant Method : Z:\voasrv\HPCHEM1\MSVOA_D\Method\82D072924S.M
 Quant Title : SW846 8260
 QLast Update : Tue Jul 30 03:50:47 2024
 Response via : Initial Calibration

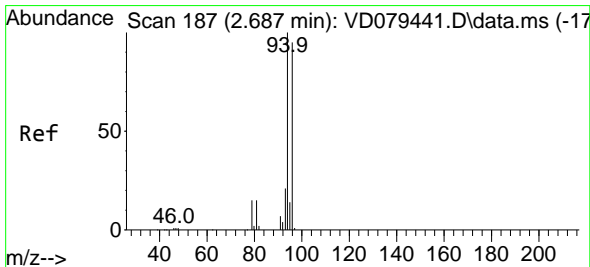
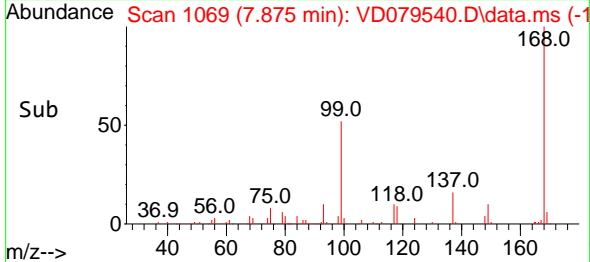
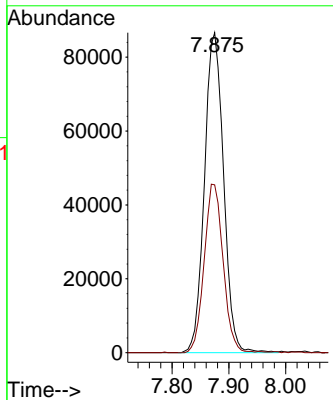
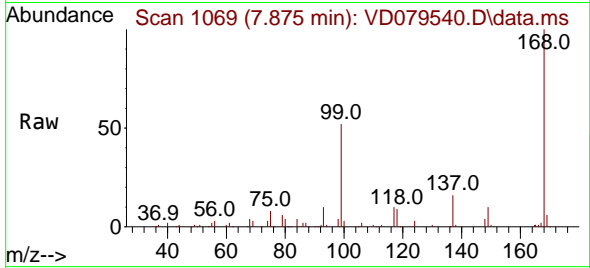




#1
 Pentafluorobenzene
 Concen: 50.000 ug/l
 RT: 7.875 min Scan# 1069
 Delta R.T. 0.000 min
 Lab File: VD079540.D
 Acq: 02 Aug 2024 14:14

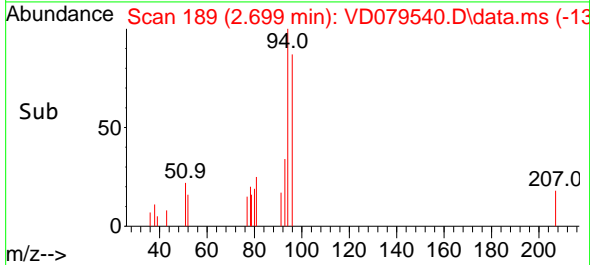
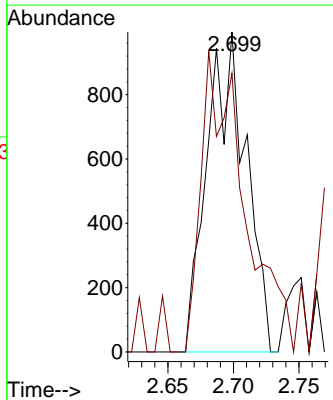
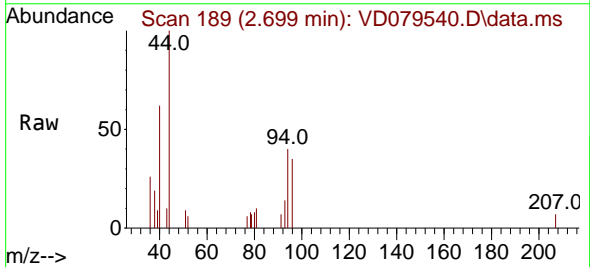
Instrument :
 MSVOA_D
 ClientSampleId :
 VD0802SBL01

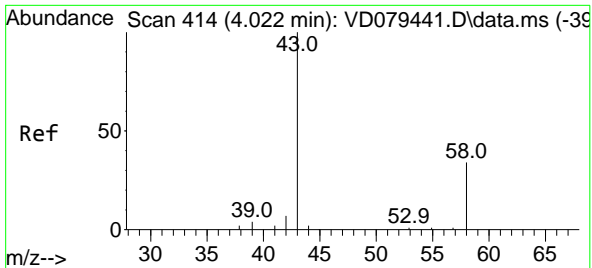
Tgt Ion:168 Resp: 202351
 Ion Ratio Lower Upper
 168 100
 99 52.4 41.1 61.7



#5
 Bromomethane
 Concen: Below Cal
 RT: 2.699 min Scan# 189
 Delta R.T. 0.012 min
 Lab File: VD079540.D
 Acq: 02 Aug 2024 14:14

Tgt Ion: 94 Resp: 2053
 Ion Ratio Lower Upper
 94 100
 96 103.1 76.9 115.3

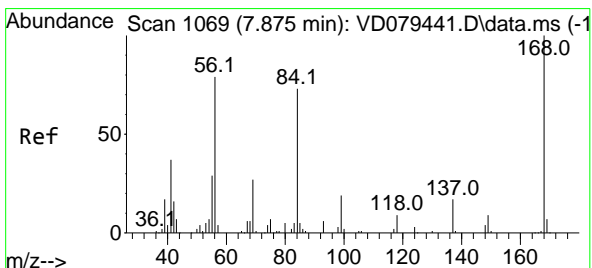
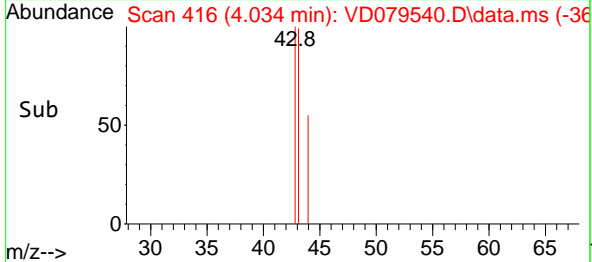
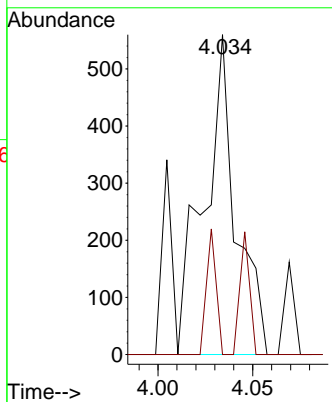
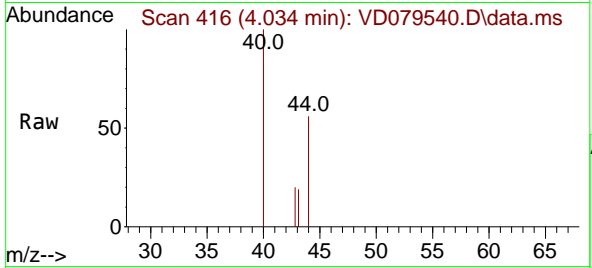




#16
 Acetone
 Concen: 1.645 ug/l
 RT: 4.034 min Scan# 416
 Delta R.T. 0.012 min
 Lab File: VD079540.D
 Acq: 02 Aug 2024 14:14

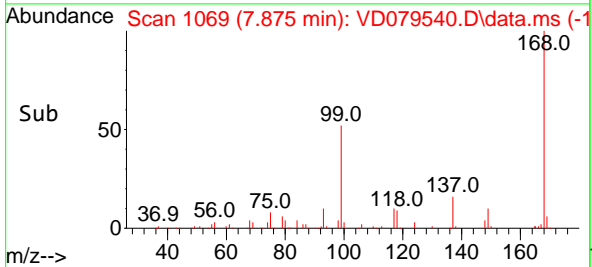
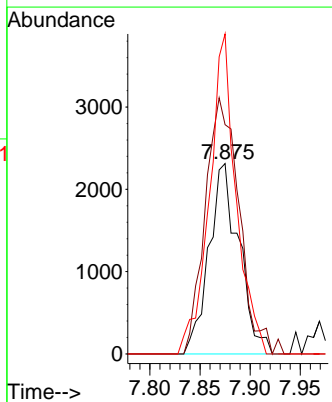
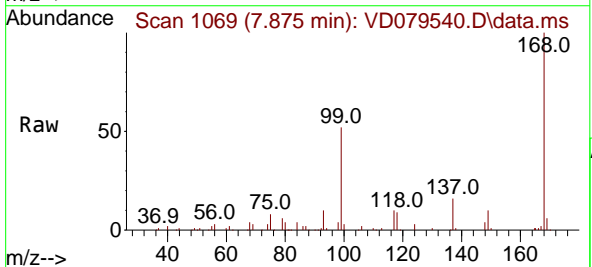
Instrument : MSVOA_D
 ClientSampleId : VD0802SBL01

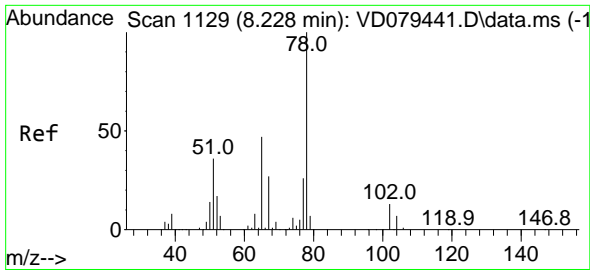
Tgt Ion: 43 Resp: 657
 Ion Ratio Lower Upper
 43 100
 58 0.0 30.4 45.6#



#31
 Cyclohexane
 Concen: 1.417 ug/l
 RT: 7.875 min Scan# 1069
 Delta R.T. -0.006 min
 Lab File: VD079540.D
 Acq: 02 Aug 2024 14:14

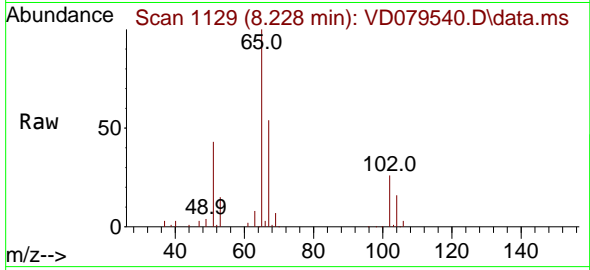
Tgt Ion: 56 Resp: 4839
 Ion Ratio Lower Upper
 56 100
 69 120.4 28.0 42.0#
 84 168.1 87.4 131.0#



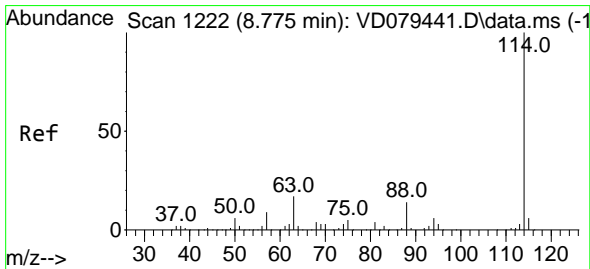
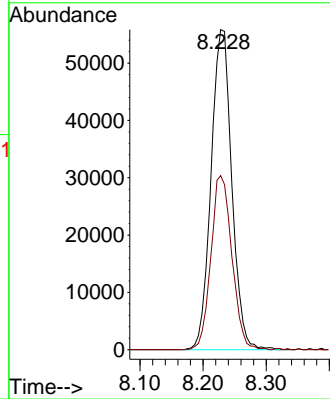
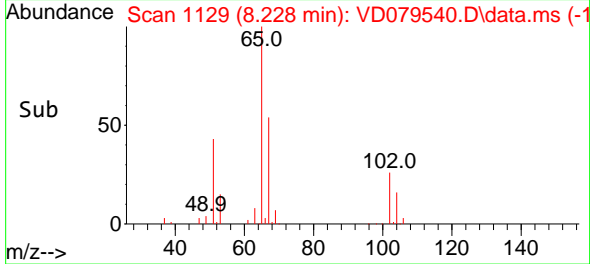


#33
 1,2-Dichloroethane-d4
 Concen: 61.905 ug/l
 RT: 8.228 min Scan# 1129
 Delta R.T. -0.000 min
 Lab File: VD079540.D
 Acq: 02 Aug 2024 14:14

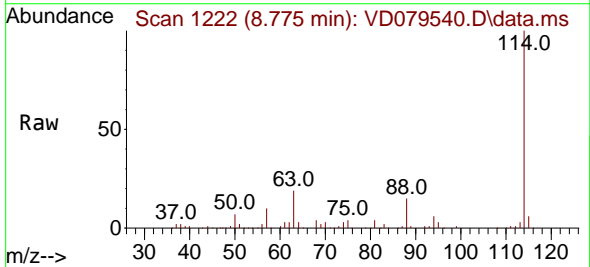
Instrument : MSVOA_D
 ClientSampleId : VD0802SBL01



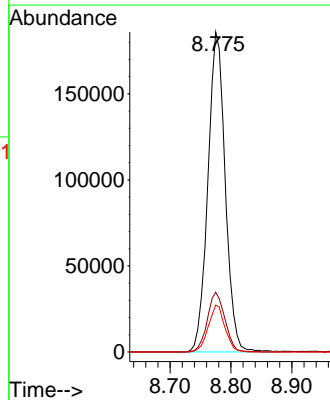
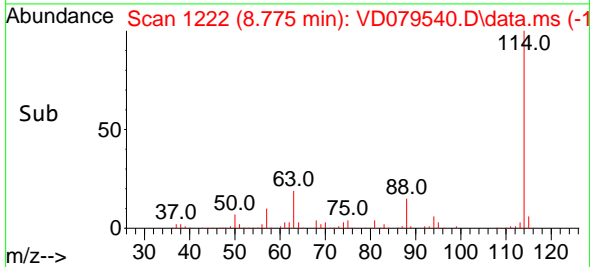
Tgt Ion: 65 Resp: 127257
 Ion Ratio Lower Upper
 65 100
 67 55.0 0.0 111.0

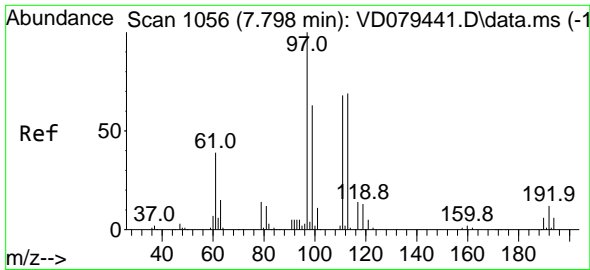


#34
 1,4-Difluorobenzene
 Concen: 50.000 ug/l
 RT: 8.775 min Scan# 1222
 Delta R.T. -0.000 min
 Lab File: VD079540.D
 Acq: 02 Aug 2024 14:14



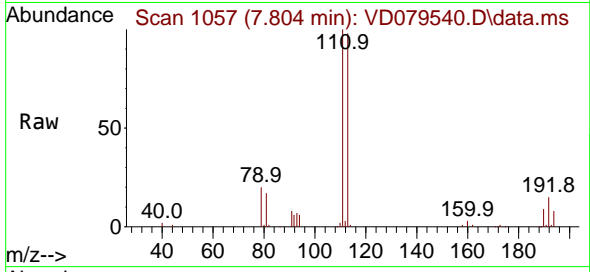
Tgt Ion: 114 Resp: 367957
 Ion Ratio Lower Upper
 114 100
 63 18.7 0.0 34.0
 88 14.7 0.0 27.2



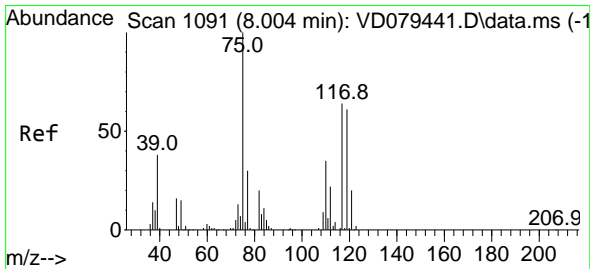
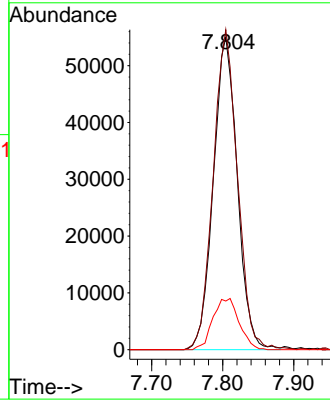
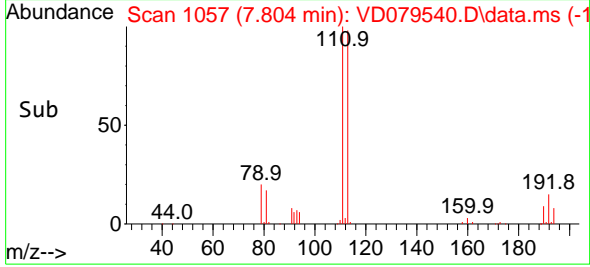


#35
 Dibromofluoromethane
 Concen: 51.631 ug/l
 RT: 7.804 min Scan# 1057
 Delta R.T. -0.000 min
 Lab File: VD079540.D
 Acq: 02 Aug 2024 14:14

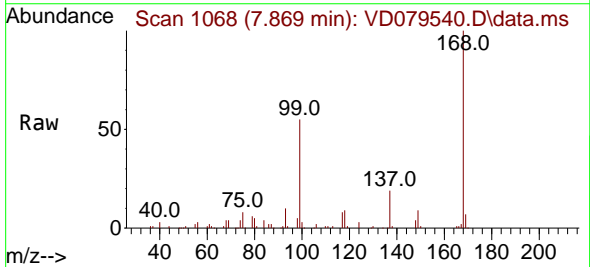
Instrument : MSVOA_D
 ClientSampleId : VD0802SBL01



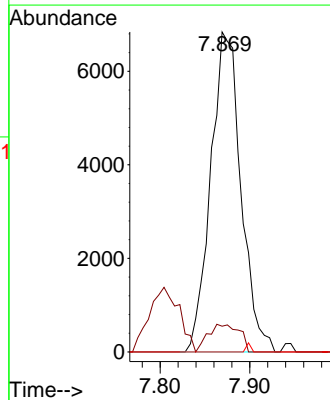
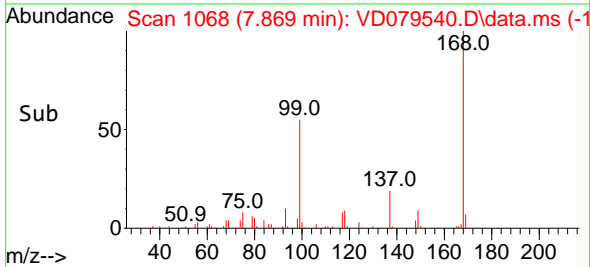
Tgt Ion:113 Resp: 128588
 Ion Ratio Lower Upper
 113 100
 111 103.9 84.0 126.0
 192 18.0 15.4 23.0

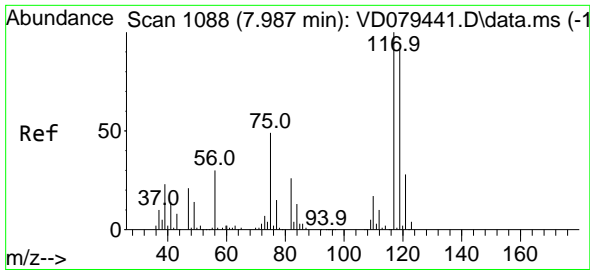


#36
 1,1-Dichloropropene
 Concen: 4.706 ug/l
 RT: 7.869 min Scan# 1068
 Delta R.T. -0.141 min
 Lab File: VD079540.D
 Acq: 02 Aug 2024 14:14



Tgt Ion: 75 Resp: 15998
 Ion Ratio Lower Upper
 75 100
 110 9.0 19.6 58.7#
 77 0.0 26.1 39.1#

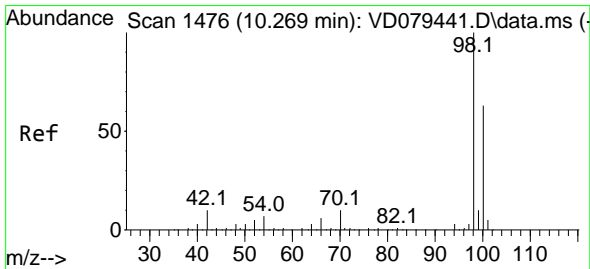
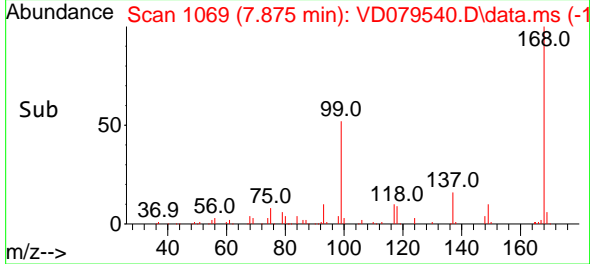
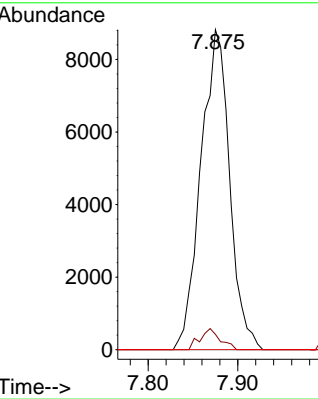
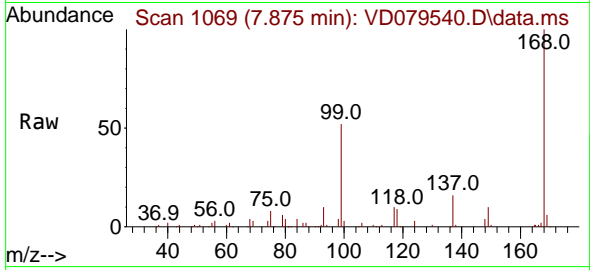




#38
 Carbon Tetrachloride
 Concen: 5.492 ug/l
 RT: 7.875 min Scan# 1069
 Delta R.T. -0.112 min
 Lab File: VD079540.D
 Acq: 02 Aug 2024 14:14

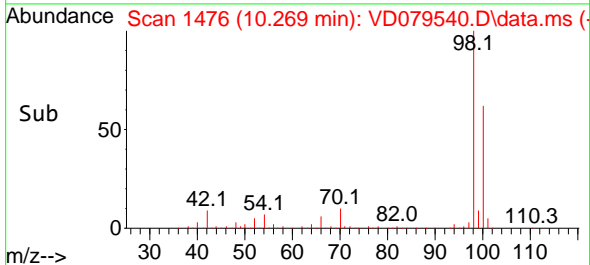
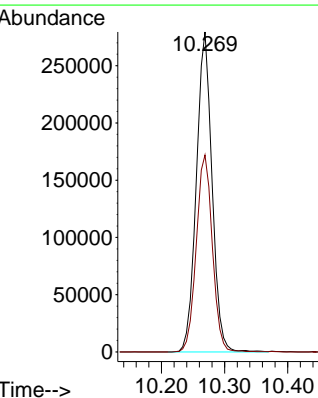
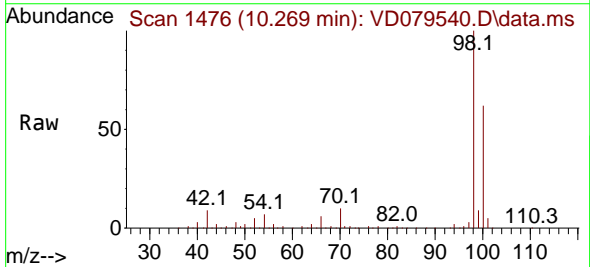
Instrument : MSVOA_D
 ClientSampleId : VD0802SBL01

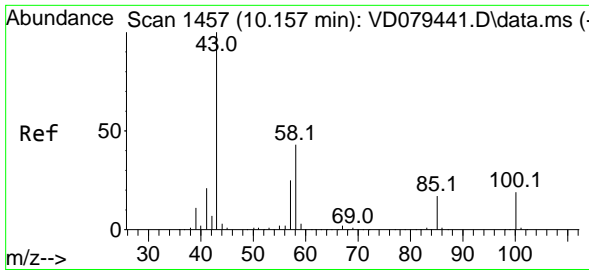
Tgt Ion	Resp	Lower	Upper
117	19625		
119	4.8	75.4	113.0#
121	0.0	25.0	37.4#



#50
 Toluene-d8
 Concen: 49.860 ug/l
 RT: 10.269 min Scan# 1476
 Delta R.T. 0.006 min
 Lab File: VD079540.D
 Acq: 02 Aug 2024 14:14

Tgt Ion	Resp	Lower	Upper
98	482222		
100	63.2	51.6	77.4

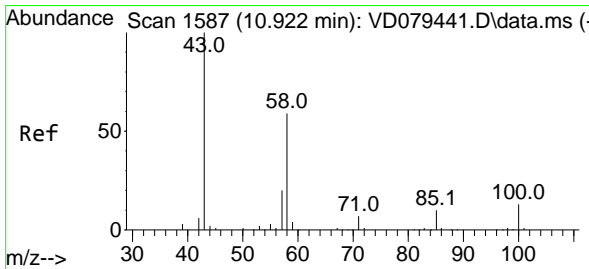
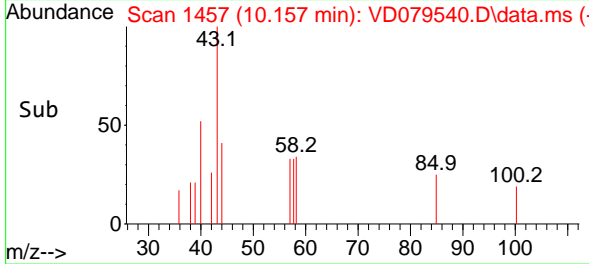
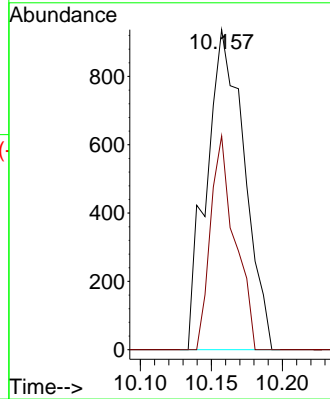
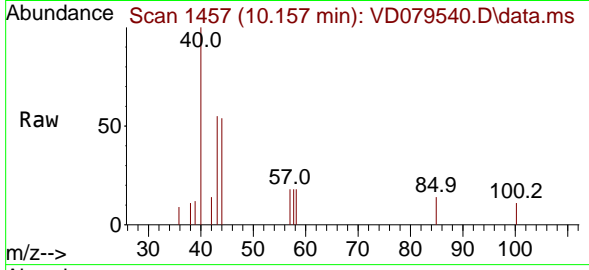




#51
 4-Methyl-2-Pentanone
 Concen: 1.294 ug/l
 RT: 10.157 min Scan# 1457
 Delta R.T. -0.000 min
 Lab File: VD079540.D
 Acq: 02 Aug 2024 14:14

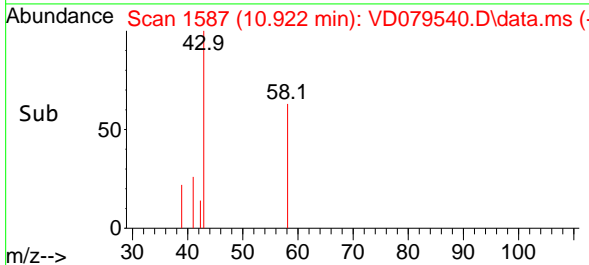
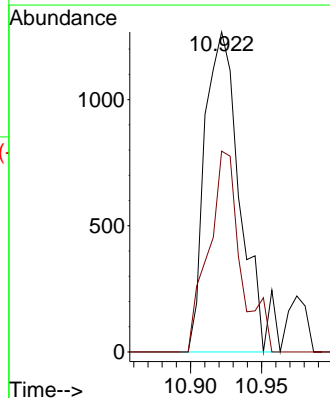
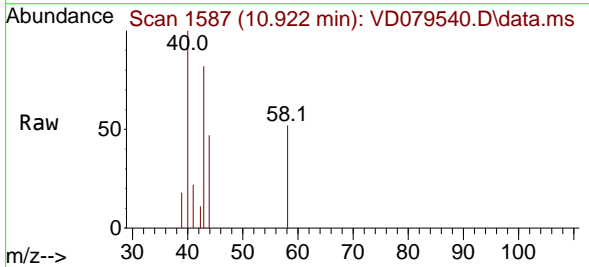
Instrument : MSVOA_D
 ClientSampleId : VD0802SBL01

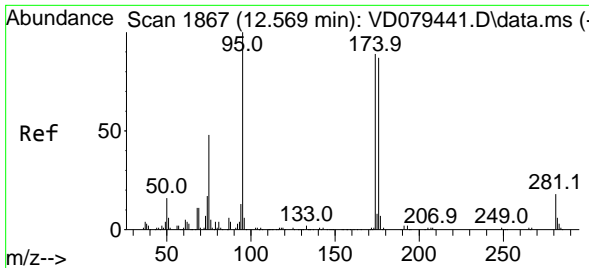
Tgt Ion: 43 Resp: 1731
 Ion Ratio Lower Upper
 43 100
 58 43.2 36.6 55.0



#59
 2-Hexanone
 Concen: 2.363 ug/l
 RT: 10.922 min Scan# 1587
 Delta R.T. 0.006 min
 Lab File: VD079540.D
 Acq: 02 Aug 2024 14:14

Tgt Ion: 43 Resp: 2204
 Ion Ratio Lower Upper
 43 100
 58 57.0 31.1 93.5

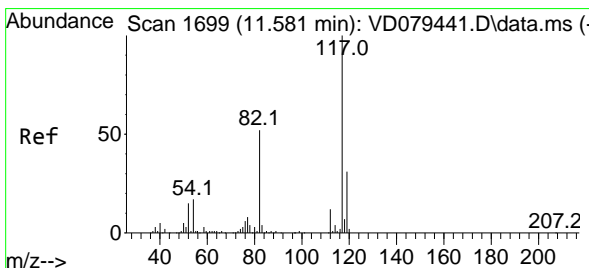
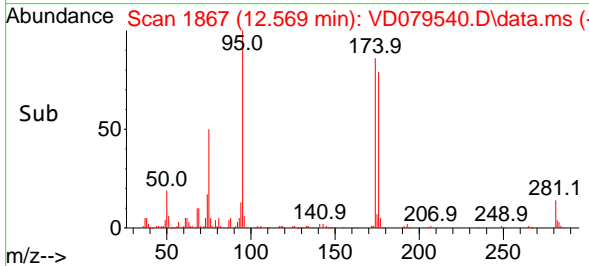
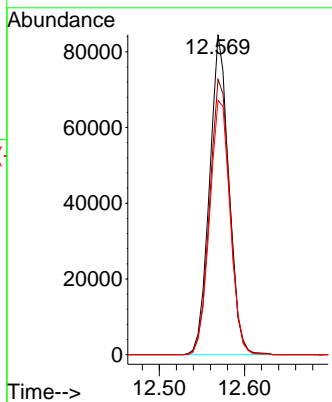
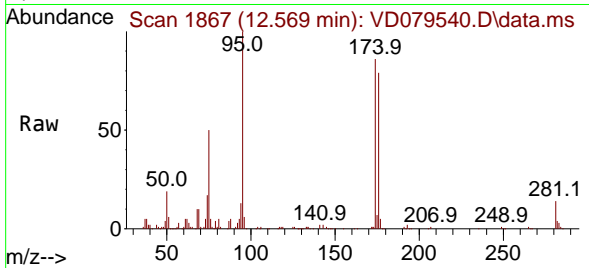




#62
 4-Bromofluorobenzene
 Concen: 47.400 ug/l
 RT: 12.569 min Scan# 1867
 Delta R.T. -0.000 min
 Lab File: VD079540.D
 Acq: 02 Aug 2024 14:14

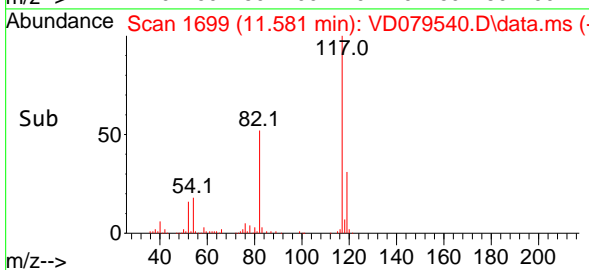
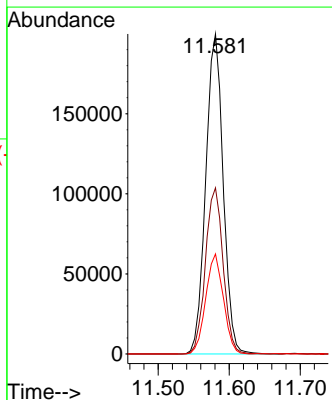
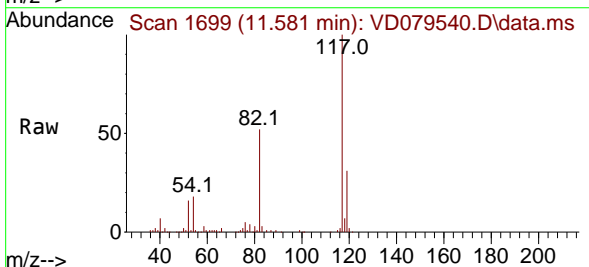
Instrument : MSVOA_D
 ClientSampleId : VD0802SBL01

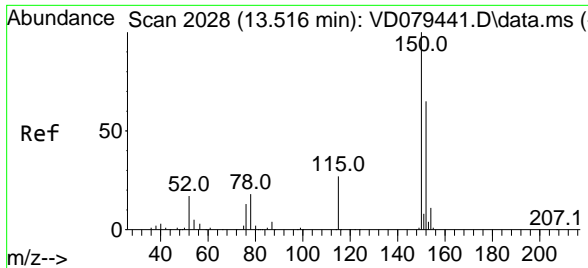
Tgt Ion	Resp	Lower	Upper
95	132660	100	
174	90.9	0.0	195.4
176	84.5	0.0	192.6



#63
 Chlorobenzene-d5
 Concen: 50.000 ug/l
 RT: 11.581 min Scan# 1699
 Delta R.T. -0.000 min
 Lab File: VD079540.D
 Acq: 02 Aug 2024 14:14

Tgt Ion	Resp	Lower	Upper
117	341540	100	
82	51.9	39.8	59.6
119	31.2	25.7	38.5

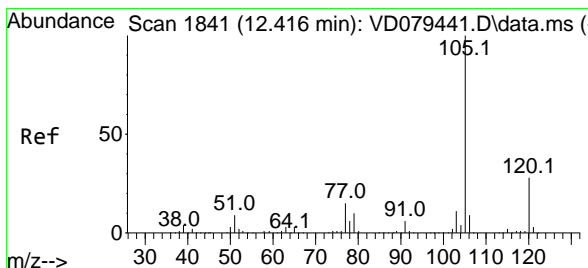
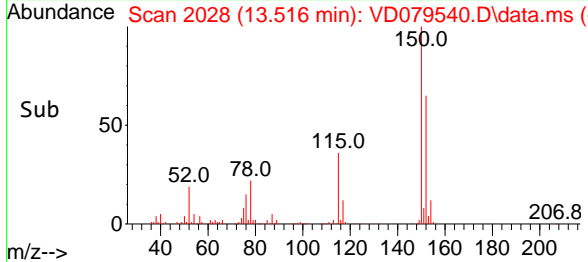
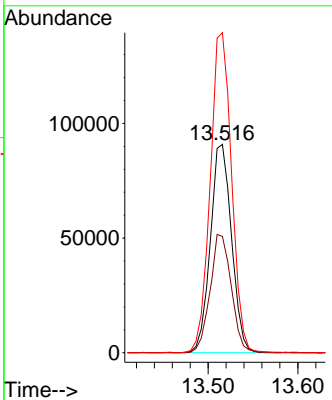
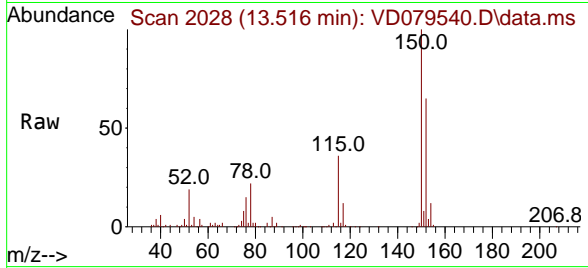




#72
 1,4-Dichlorobenzene-d4
 Concen: 50.000 ug/l
 RT: 13.516 min Scan# 2028
 Delta R.T. 0.006 min
 Lab File: VD079540.D
 Acq: 02 Aug 2024 14:14

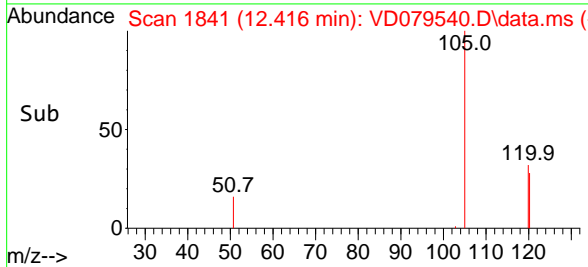
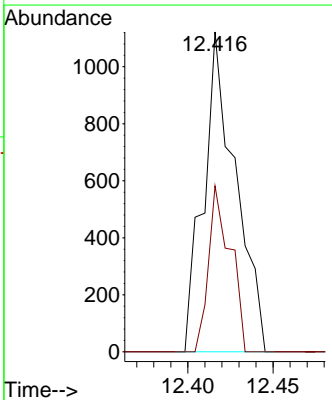
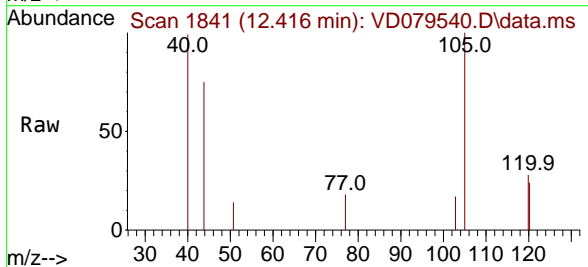
Instrument : MSVOA_D
 ClientSampleId : VD0802SBL01

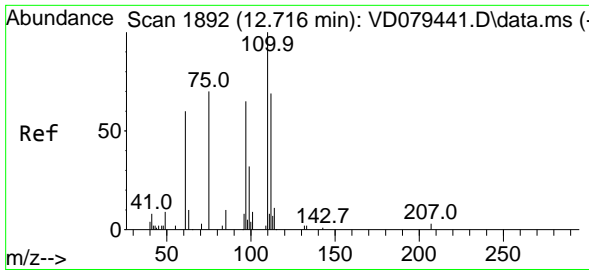
Tgt Ion	Resp	Lower	Upper
152	148979		
115	56.6	26.5	79.5
150	154.9	0.0	341.6



#73
 Isopropylbenzene
 Concen: 3.749 ug/l
 RT: 12.416 min Scan# 1841
 Delta R.T. -0.000 min
 Lab File: VD079540.D
 Acq: 02 Aug 2024 14:14

Tgt Ion	Resp	Lower	Upper
105	1463		
105	100		
120	35.4	13.6	40.7

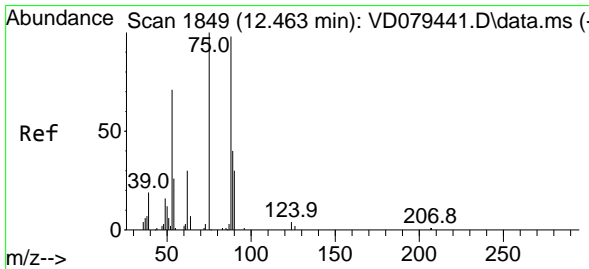
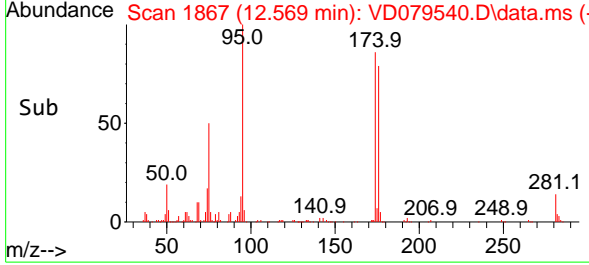
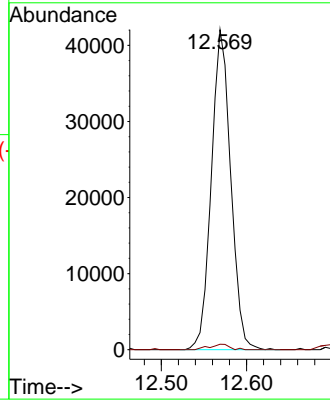
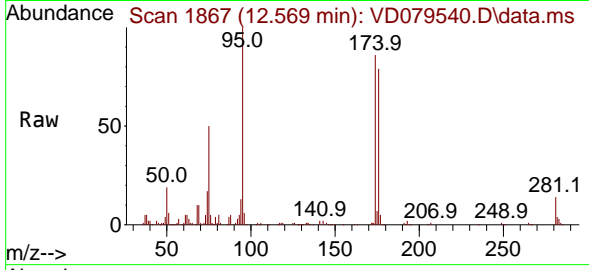




#76
 1,2,3-Trichloropropane
 Concen: 51.063 ug/l
 RT: 12.569 min Scan# 1867
 Delta R.T. -0.153 min
 Lab File: VD079540.D
 Acq: 02 Aug 2024 14:14

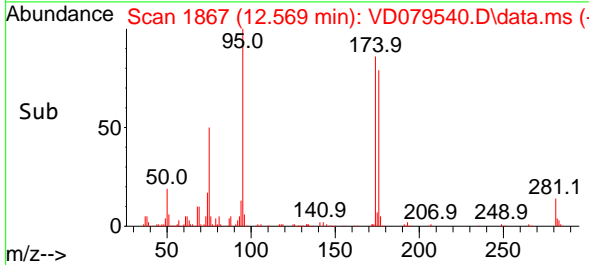
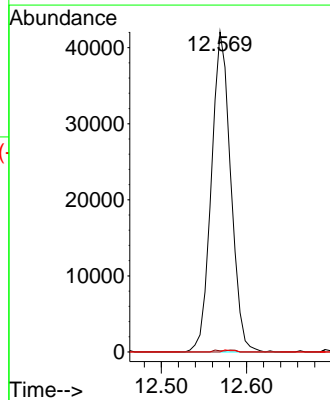
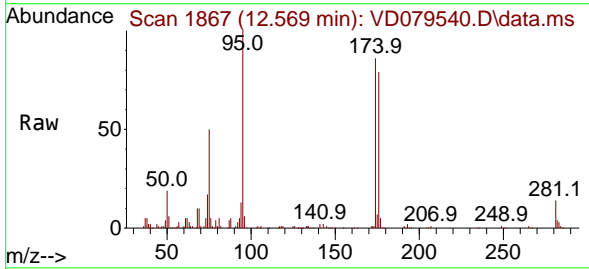
Instrument : MSVOA_D
 ClientSampleId : VD0802SBL01

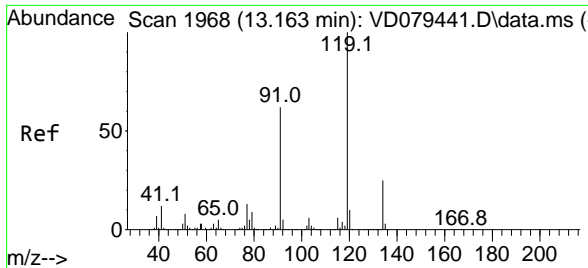
Tgt Ion: 75 Resp: 66496
 Ion Ratio Lower Upper
 75 100
 77 1.8 0.0 0.0#



#81
 trans-1,4-Dichloro-2-butene
 Concen: 97.392 ug/l
 RT: 12.569 min Scan# 1867
 Delta R.T. 0.100 min
 Lab File: VD079540.D
 Acq: 02 Aug 2024 14:14

Tgt Ion: 75 Resp: 66496
 Ion Ratio Lower Upper
 75 100
 53 0.6 61.4 92.2#
 89 0.3 35.4 53.0#



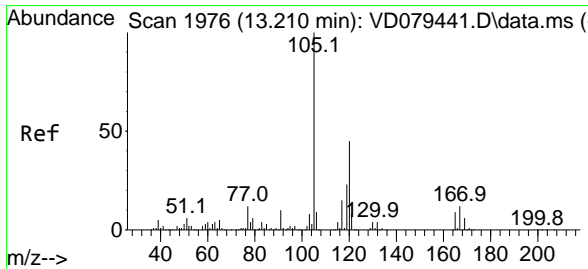
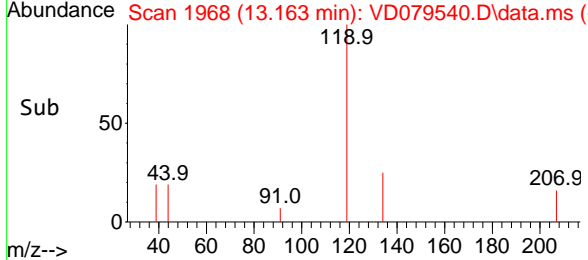
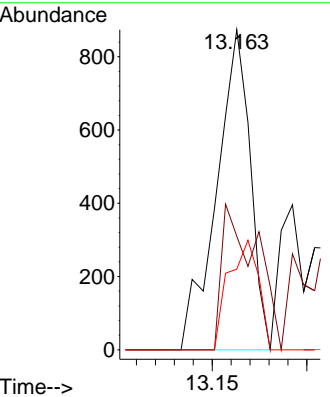
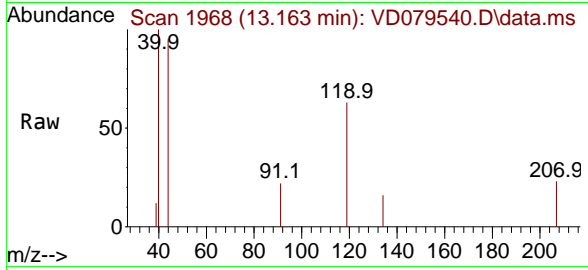


#83
 tert-Butylbenzene
 Concen: 3.752 ug/l
 RT: 13.163 min Scan# 1968
 Delta R.T. -0.000 min
 Lab File: VD079540.D
 Acq: 02 Aug 2024 14:14

Instrument : MSVOA_D
 ClientSampleId : VD0802SBL01

Tgt Ion:119 Resp: 1077

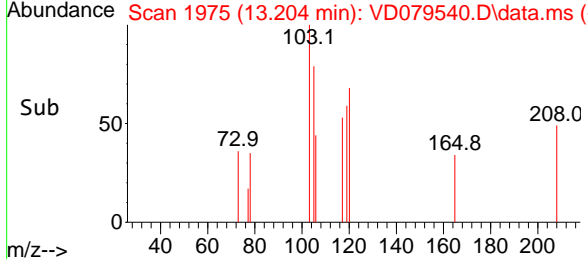
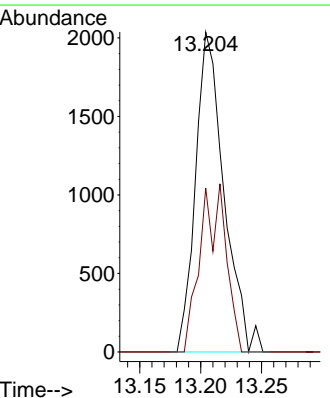
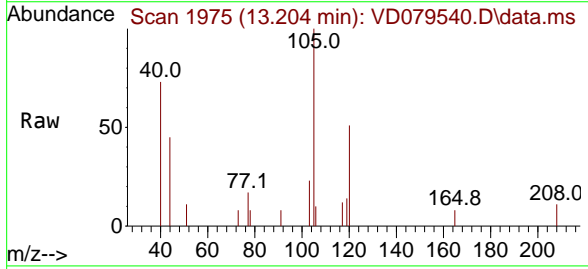
Ion	Ratio	Lower	Upper
119	100		
91	46.9	28.2	84.7
134	30.4	13.4	40.1

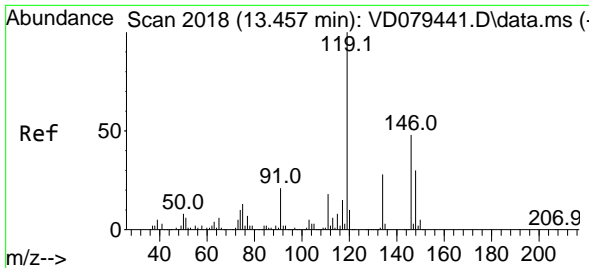


#84
 1,2,4-Trimethylbenzene
 Concen: 3.759 ug/l
 RT: 13.204 min Scan# 1975
 Delta R.T. 0.000 min
 Lab File: VD079540.D
 Acq: 02 Aug 2024 14:14

Tgt Ion:105 Resp: 3313

Ion	Ratio	Lower	Upper
105	100		
120	47.1	23.6	71.0

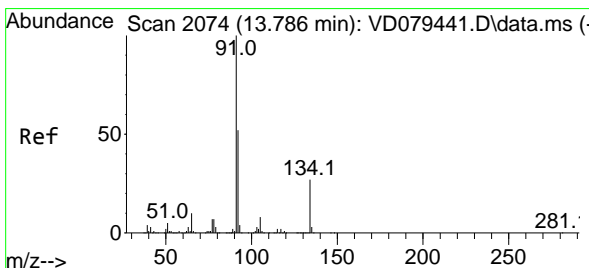
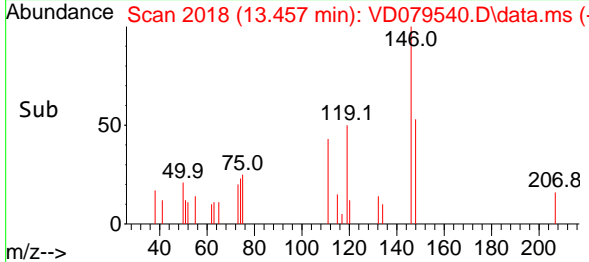
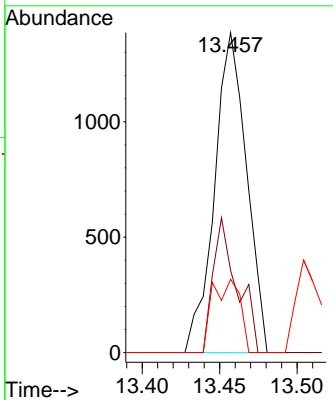
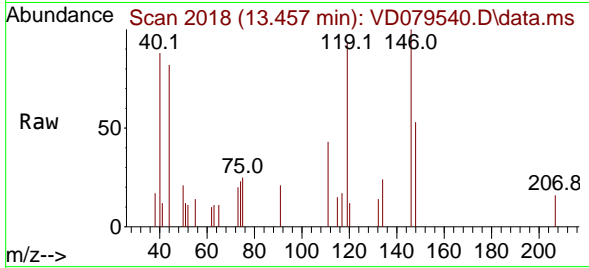




#86
 p-Isopropyltoluene
 Concen: 4.062 ug/l
 RT: 13.457 min Scan# 2018
 Delta R.T. 0.000 min
 Lab File: VD079540.D
 Acq: 02 Aug 2024 14:14

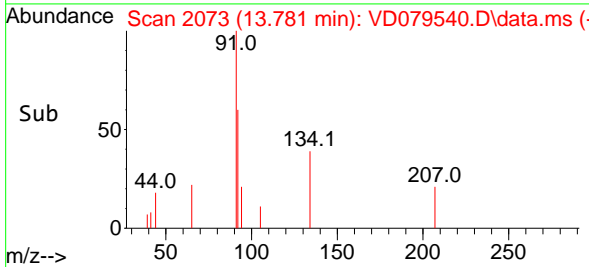
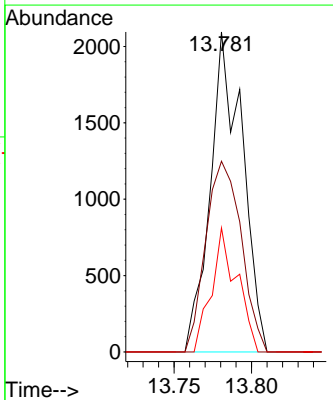
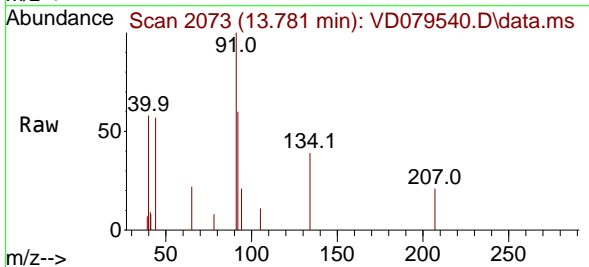
Instrument :
 MSVOA_D
 ClientSampleId :
 VD0802SBL01

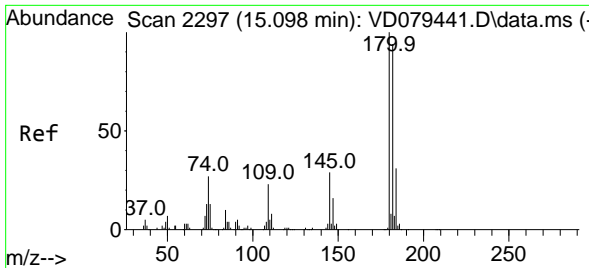
Tgt Ion	Resp	Lower	Upper
119	100		
134	31.7	13.7	41.1
91	19.5	10.7	32.1



#89
 n-Butylbenzene
 Concen: 4.071 ug/l
 RT: 13.781 min Scan# 2073
 Delta R.T. -0.000 min
 Lab File: VD079540.D
 Acq: 02 Aug 2024 14:14

Tgt Ion	Resp	Lower	Upper
91	100		
92	65.9	25.7	77.0
134	31.0	13.6	40.8

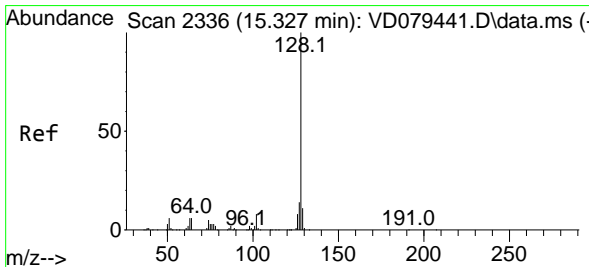
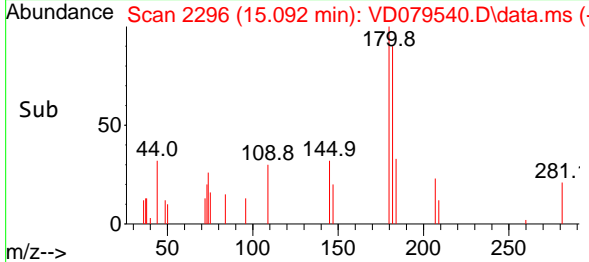
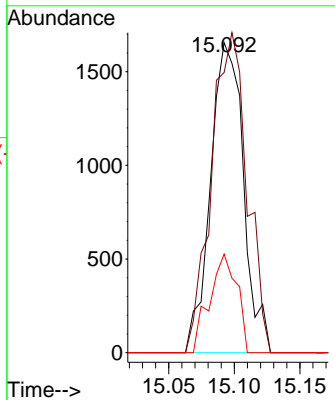
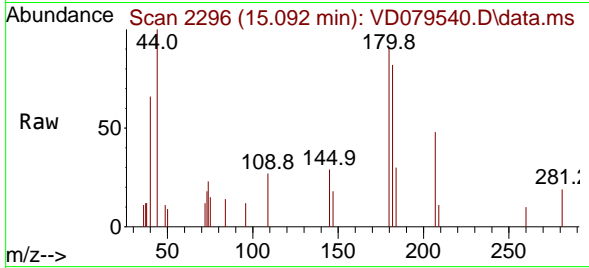




#93
 1,2,4-Trichlorobenzene
 Concen: 1.039 ug/l
 RT: 15.092 min Scan# 21
 Delta R.T. -0.000 min
 Lab File: VD079540.D
 Acq: 02 Aug 2024 14:14

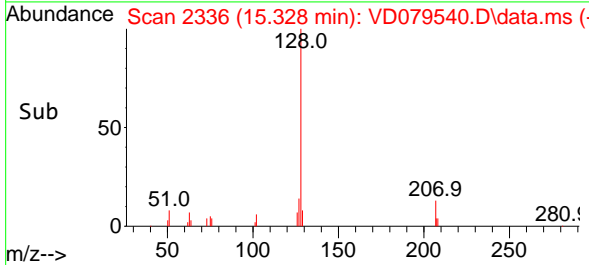
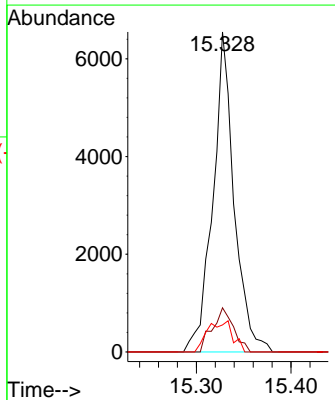
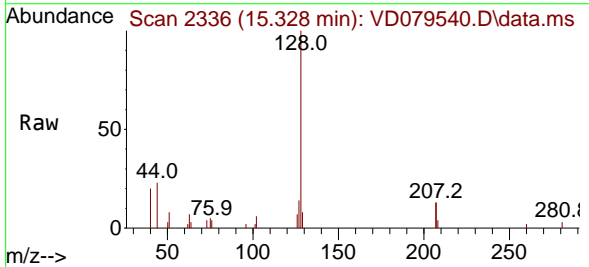
Instrument : MSVOA_D
 ClientSampleId : VD0802SBL01

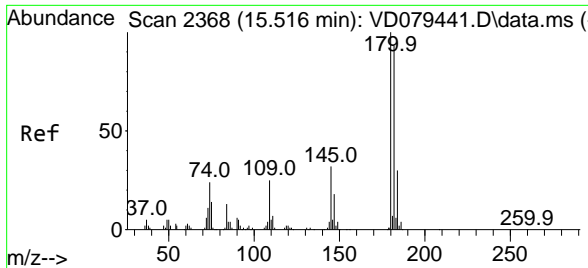
Tgt Ion	Resp	Lower	Upper
180	2894	100	
182	111.9	46.9	140.7
145	26.4	14.0	41.9



#95
 Naphthalene
 Concen: 2.116 ug/l
 RT: 15.328 min Scan# 2336
 Delta R.T. -0.000 min
 Lab File: VD079540.D
 Acq: 02 Aug 2024 14:14

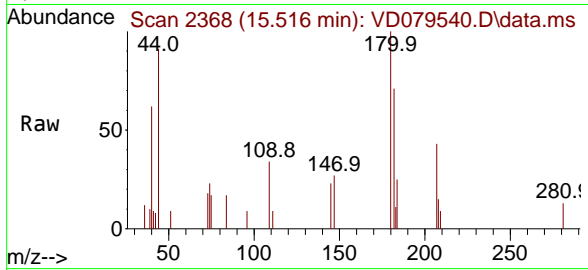
Tgt Ion	Resp	Lower	Upper
128	10204	100	
127	13.8	10.2	15.4
129	8.5	8.5	12.7#





#96
 1,2,3-Trichlorobenzene
 Concen: 1.293 ug/l
 RT: 15.516 min Scan# 21
 Delta R.T. -0.006 min
 Lab File: VD079540.D
 Acq: 02 Aug 2024 14:14

Instrument :
 MSVOA_D
 ClientSampleId :
 VD0802SBL01



Tgt Ion:180 Resp: 3168

Ion	Ratio	Lower	Upper
180	100		
182	93.3	47.8	143.3
145	34.2	16.1	48.2

