

Data Path : Z:\voasrv\HPCHEM1\MSVOA\_D\Data\VD080323\  
 Data File : VD076912.D  
 Acq On : 03 Aug 2023 10:33  
 Operator : KP/SY  
 Sample : VSTD00559  
 Misc : 5.00G/10ml/MSVOA\_D/SOIL  
 ALS Vial : 3 Sample Multiplier: 1

Instrument :  
 MSVOA\_D  
 ClientSampleId :

Quant Time: Aug 04 01:41:50 2023  
 Quant Method : Z:\voasrv\HPCHEM1\MSVOA\_D\Method\SFAMDLM080323SMA.M  
 Quant Title : SFAM01.0  
 QLast Update : Fri Aug 04 01:33:35 2023  
 Response via : Initial Calibration

| Compound                      | R.T.   | QIon | Response | Conc   | Units  | Dev(Min) |
|-------------------------------|--------|------|----------|--------|--------|----------|
| Internal Standards            |        |      |          |        |        |          |
| 1) 1,4-Difluorobenzene        | 8.775  | 114  | 270791   | 25.000 | ug/L   | 0.00     |
| 28) Chlorobenzene-d5          | 11.581 | 117  | 272885   | 25.000 | ug/L   | 0.00     |
| 58) 1,4-Dichlorobenzene-d4    | 13.516 | 152  | 134557   | 25.000 | ug/L   | 0.00     |
| System Monitoring Compounds   |        |      |          |        |        |          |
| 4) Vinyl Chloride-d3          | 2.275  | 65   | 44503    | 6.891  | ug/L   | 0.00     |
| 7) Chloroethane-d5            | 2.793  | 69   | 40469    | 7.467  | ug/L   | 0.00     |
| 11) 1,1-Dichloroethene-d2     | 3.916  | 65   | 10249    | 6.089  | ug/L   | 0.00     |
| 21) 2-Butanone-d5             | 6.993  | 46   | 12638    | 12.393 | ug/L   | 0.00     |
| 24) Chloroform-d              | 7.563  | 84   | 46848    | 6.474  | ug/L   | 0.00     |
| 26) 1,2-Dichloroethane-d4     | 8.234  | 65   | 23826    | 6.667  | ug/L   | 0.00     |
| 32) Benzene-d6                | 8.204  | 84   | 93235    | 5.709  | ug/L   | 0.00     |
| 36) 1,2-Dichloropropane-d6    | 9.210  | 67   | 28374    | 5.467  | ug/L   | 0.00     |
| 41) Toluene-d8                | 10.269 | 98   | 81881    | 5.390  | ug/L   | 0.00     |
| 43) trans-1,3-Dichloroprop... | 10.528 | 79   | 11932    | 5.479  | ug/L   | 0.00     |
| 47) 2-Hexanone-d5             | 10.881 | 63   | 9577     | 11.203 | ug/L   | 0.00     |
| 56) 1,1,2,2-Tetrachloroeth... | 12.651 | 84   | 25815    | 6.539  | ug/L   | 0.00     |
| 66) 1,2-Dichlorobenzene-d4    | 13.816 | 152  | 25336    | 5.229  | ug/L   | 0.00     |
| Target Compounds              |        |      |          |        |        |          |
|                               |        |      |          |        |        | Qvalue   |
| 2) Dichlorodifluoromethane    | 1.928  | 85   | 25794    | 6.168  | ug/L   | 100      |
| 3) Chloromethane              | 2.146  | 50   | 31884    | 4.720  | ug/L   | 98       |
| 5) Vinyl chloride             | 2.281  | 62   | 42951    | 5.636  | ug/L   | 91       |
| 6) Bromomethane               | 2.681  | 94   | 32276    | 7.139  | ug/L   | 98       |
| 8) Chloroethane               | 2.834  | 64   | 30501    | 6.388  | ug/L   | 98       |
| 9) Trichlorofluoromethane     | 3.175  | 101  | 35757    | 6.230  | ug/L   | 96       |
| 10) 1,1,2-Trichloro-1,2,2-... | 3.963  | 101  | 22294    | 5.977  | ug/L   | 96       |
| 12) 1,1-Dichloroethene        | 3.940  | 96   | 20177    | 5.629  | ug/L   | 83       |
| 13) Acetone                   | 4.016  | 43   | 10553    | 11.577 | ug/L   | 72       |
| 14) Carbon disulfide          | 4.263  | 76   | 71360    | 5.511  | ug/L   | 96       |
| 15) Methyl Acetate            | 4.563  | 43   | 8634     | 4.641  | ug/L # | 90       |
| 16) Methylene chloride        | 4.793  | 84   | 32999    | 6.838  | ug/L # | 72       |
| 17) trans-1,2-Dichloroethene  | 5.311  | 96   | 14898    | 3.693  | ug/L   | 80       |
| 18) Methyl tert-butyl Ether   | 5.316  | 73   | 49795    | 5.444  | ug/L # | 83       |
| 19) 1,1-Dichloroethane        | 6.110  | 63   | 40248    | 5.583  | ug/L   | 95       |
| 20) cis-1,2-Dichloroethene    | 7.075  | 96   | 24910    | 5.548  | ug/L   | 98       |
| 22) 2-Butanone                | 7.075  | 43   | 17147    | 12.384 | ug/L   | 82       |
| 23) Bromochloromethane        | 7.422  | 128  | 13268    | 6.807  | ug/L   | 78       |
| 25) Chloroform                | 7.599  | 83   | 42958    | 5.950  | ug/L   | 100      |
| 27) 1,2-Dichloroethane        | 8.322  | 62   | 27140    | 6.104  | ug/L # | 92       |
| 29) Cyclohexane               | 7.875  | 56   | 28765    | 4.080  | ug/L # | 85       |
| 30) 1,1,1-Trichloroethane     | 7.793  | 97   | 35649    | 5.568  | ug/L   | 97       |
| 31) Carbon tetrachloride      | 7.993  | 117  | 26698    | 5.156  | ug/L   | 98       |
| 33) Benzene                   | 8.252  | 78   | 93437    | 5.188  | ug/L   | 100      |
| 34) Trichloroethene           | 9.028  | 95   | 23650    | 5.123  | ug/L   | 92       |
| 35) Methylcyclohexane         | 9.269  | 83   | 35610    | 4.726  | ug/L   | 96       |
| 37) 1,2-Dichloropropane       | 9.304  | 63   | 22939    | 4.698  | ug/L   | 100      |
| 38) Bromodichloromethane      | 9.587  | 83   | 33566    | 5.890  | ug/L   | 95       |
| 39) cis-1,3-Dichloropropene   | 10.016 | 75   | 35681    | 4.755  | ug/L   | 97       |
| 40) 4-Methyl-2-pentanone      | 10.163 | 43   | 29060    | 9.618  | ug/L # | 93       |
| 42) Toluene                   | 10.334 | 91   | 95273    | 4.918  | ug/L   | 100      |
| 44) trans-1,3-Dichloropropene | 10.551 | 75   | 32823    | 5.328  | ug/L   | 91       |

Data Path : Z:\voasrv\HPCHEM1\MSVOA\_D\Data\VD080323\  
 Data File : VD076912.D  
 Acq On : 03 Aug 2023 10:33  
 Operator : KP/SY  
 Sample : VSTD00559  
 Misc : 5.00G/10ml/MSVOA\_D/SOIL  
 ALS Vial : 3 Sample Multiplier: 1

Instrument :  
 MSVOA\_D  
 ClientSampleId :

Quant Time: Aug 04 01:41:50 2023  
 Quant Method : Z:\voasrv\HPCHEM1\MSVOA\_D\Method\SFAMDLM080323SMA.M  
 Quant Title : SFAM01.0  
 QLast Update : Fri Aug 04 01:33:35 2023  
 Response via : Initial Calibration

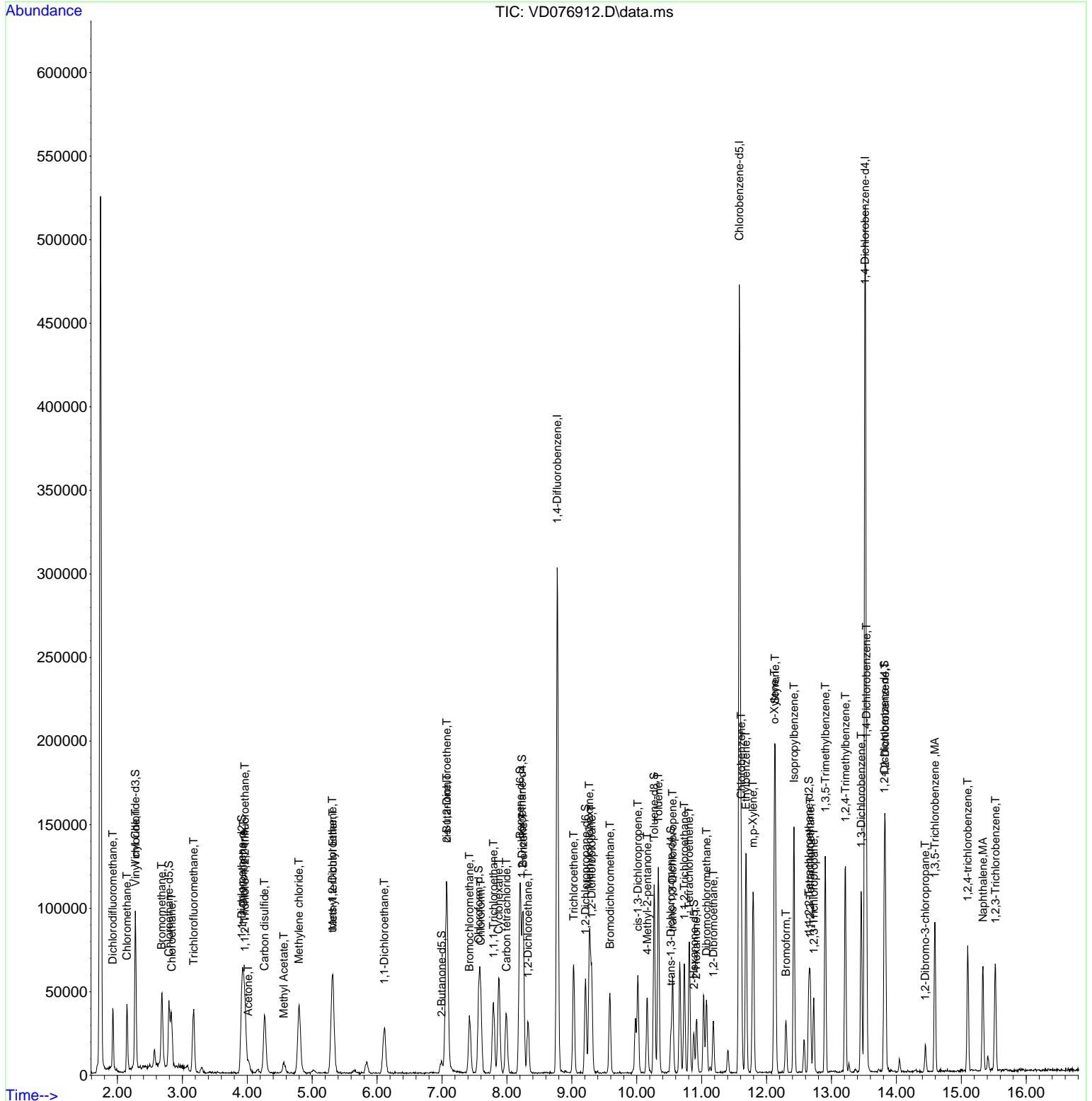
| Compound                      | R.T.   | QIon | Response | Conc  | Units  | Dev(Min) |
|-------------------------------|--------|------|----------|-------|--------|----------|
| 45) 1,1,2-Trichloroethane     | 10.734 | 97   | 21378    | 6.086 | ug/L   | 93       |
| 46) Tetrachloroethene         | 10.804 | 164  | 17449    | 4.775 | ug/L   | 90       |
| 48) 2-Hexanone                | 10.916 | 43   | 20569    | 9.659 | ug/L # | 95       |
| 49) Dibromochloromethane      | 11.075 | 129  | 23244    | 5.901 | ug/L   | 98       |
| 50) 1,2-Dibromoethane         | 11.181 | 107  | 19456    | 5.711 | ug/L   | 86       |
| 51) Chlorobenzene             | 11.610 | 112  | 64508    | 5.330 | ug/L   | 97       |
| 52) Ethylbenzene              | 11.681 | 91   | 98376    | 4.713 | ug/L   | 96       |
| 53) m,p-Xylene                | 11.793 | 106  | 37677    | 4.603 | ug/L   | 89       |
| 54) o-Xylene                  | 12.122 | 106  | 35564    | 4.564 | ug/L   | 90       |
| 55) Styrene                   | 12.134 | 104  | 64942    | 4.766 | ug/L   | 89       |
| 57) 1,1,2,2-Tetrachloroethane | 12.675 | 83   | 25634    | 6.265 | ug/L   | 99       |
| 59) Bromoform                 | 12.298 | 173  | 13873    | 5.654 | ug/L   | 98       |
| 60) Isopropylbenzene          | 12.422 | 105  | 93636    | 4.582 | ug/L   | 99       |
| 61) 1,2,3-Trichloropropane    | 12.728 | 75   | 17010    | 6.275 | ug/L   | 95       |
| 62) 1,3,5-Trimethylbenzene    | 12.904 | 105  | 69346    | 4.284 | ug/L   | 99       |
| 63) 1,2,4-Trimethylbenzene    | 13.216 | 105  | 69310    | 4.309 | ug/L   | 99       |
| 64) 1,3-Dichlorobenzene       | 13.457 | 146  | 45476    | 5.019 | ug/L   | 94       |
| 65) 1,4-Dichlorobenzene       | 13.539 | 146  | 46984    | 5.097 | ug/L   | 96       |
| 67) 1,2-Dichlorobenzene       | 13.828 | 146  | 42368    | 5.186 | ug/L   | 96       |
| 68) 1,2-Dibromo-3-chloropr... | 14.445 | 75   | 3828     | 6.407 | ug/L # | 71       |
| 69) 1,3,5-Trichlorobenzene    | 14.592 | 180  | 27587    | 4.601 | ug/L   | 97       |
| 70) 1,2,4-trichlorobenzene    | 15.098 | 180  | 22845    | 4.288 | ug/L   | 98       |
| 71) Naphthalene               | 15.334 | 128  | 53590    | 5.043 | ug/L   | 100      |
| 72) 1,2,3-Trichlorobenzene    | 15.528 | 180  | 22243    | 4.751 | ug/L   | 96       |

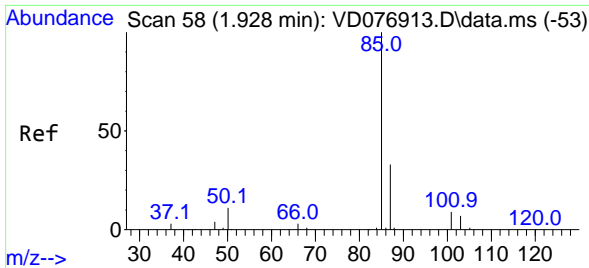
(#) = qualifier out of range (m) = manual integration (+) = signals summed

Data Path : Z:\voasrv\HPCHEM1\MSVOA\_D\Data\VD080323\  
 Data File : VD076912.D  
 Acq On : 03 Aug 2023 10:33  
 Operator : KP/SY  
 Sample : VSTD00559  
 Misc : 5.00G/10ml/MSVOA\_D/SOIL  
 ALS Vial : 3 Sample Multiplier: 1

Instrument :  
 MSVOA\_D  
 ClientSampleId :

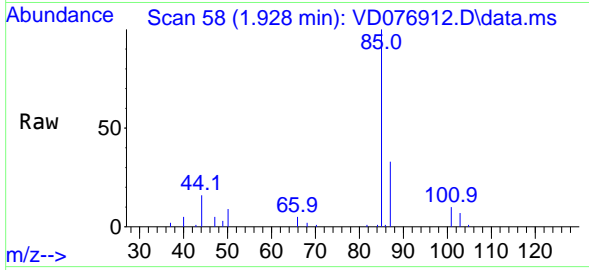
Quant Time: Aug 04 01:41:50 2023  
 Quant Method : Z:\voasrv\HPCHEM1\MSVOA\_D\Method\SFAMDLM080323SMA.M  
 Quant Title : SFAM01.0  
 QLast Update : Fri Aug 04 01:33:35 2023  
 Response via : Initial Calibration



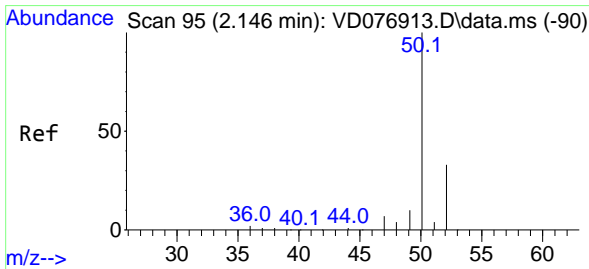
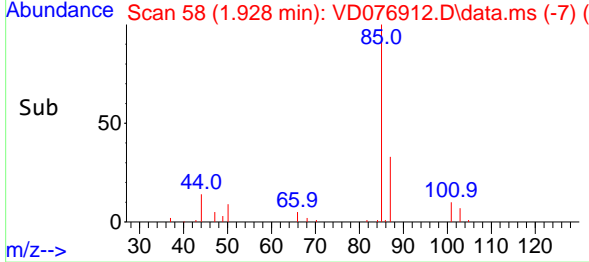
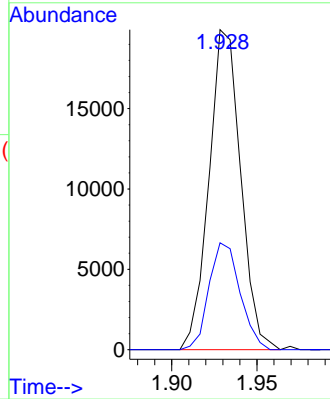


#2  
 Dichlorodifluoromethane  
 Concen: 6.168 ug/L  
 RT: 1.928 min Scan# 58  
 Delta R.T. -0.000 min  
 Lab File: VD076912.D  
 Acq: 03 Aug 2023 10:33

Instrument :  
 MSVOA\_D  
 ClientSampleId :

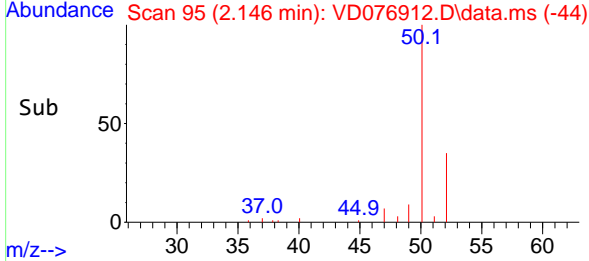
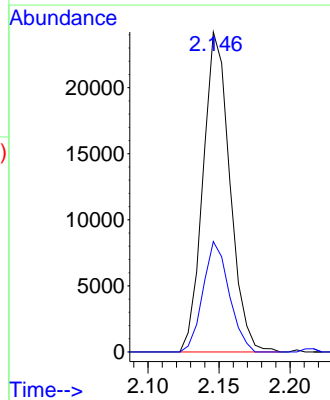
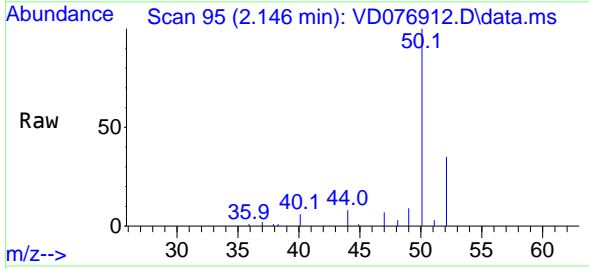


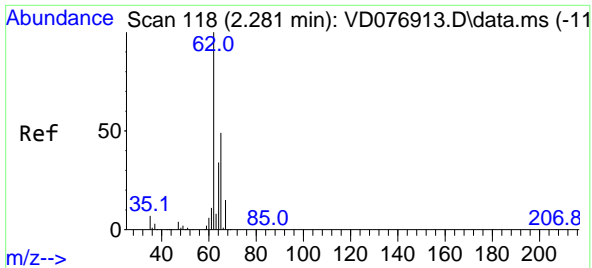
Tgt Ion: 85 Resp: 25794  
 Ion Ratio Lower Upper  
 85 100  
 87 32.8 26.3 39.5



#3  
 Chloromethane  
 Concen: 4.720 ug/L  
 RT: 2.146 min Scan# 95  
 Delta R.T. -0.000 min  
 Lab File: VD076912.D  
 Acq: 03 Aug 2023 10:33

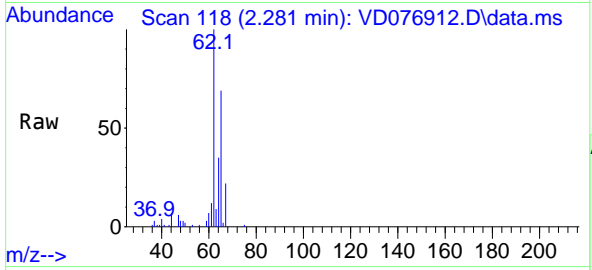
Tgt Ion: 50 Resp: 31884  
 Ion Ratio Lower Upper  
 50 100  
 52 34.5 23.2 43.2



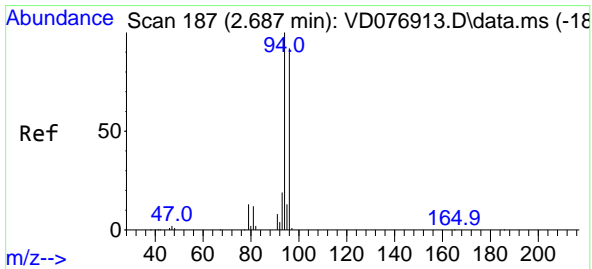
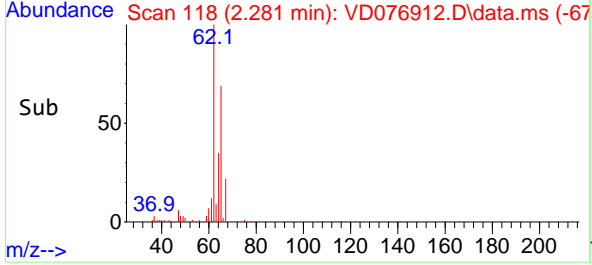
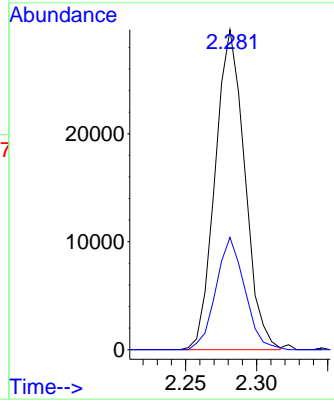


#5  
 Vinyl chloride  
 Concen: 5.636 ug/L  
 RT: 2.281 min Scan# 118  
 Delta R.T. -0.000 min  
 Lab File: VD076912.D  
 Acq: 03 Aug 2023 10:33

Instrument : MSVOA\_D  
 ClientSampleId :

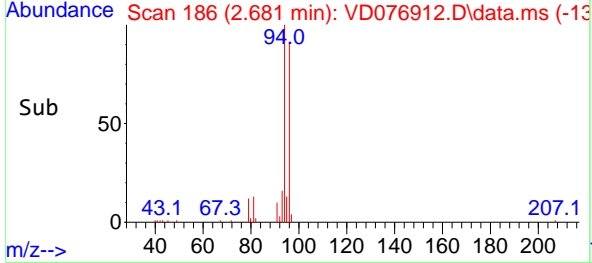
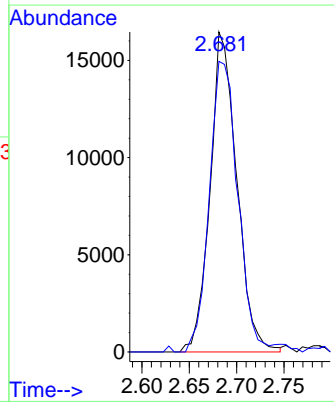
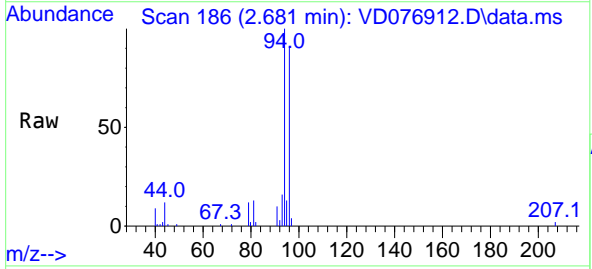


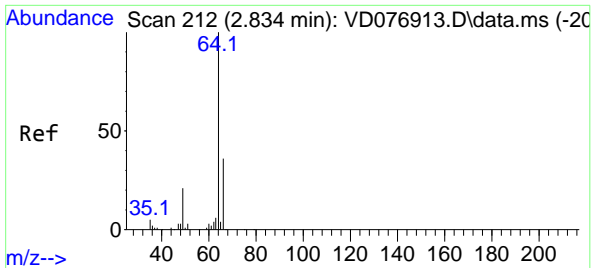
Tgt Ion: 62 Resp: 42951  
 Ion Ratio Lower Upper  
 62 100  
 64 35.1 21.1 39.1



#6  
 Bromomethane  
 Concen: 7.139 ug/L  
 RT: 2.681 min Scan# 186  
 Delta R.T. -0.006 min  
 Lab File: VD076912.D  
 Acq: 03 Aug 2023 10:33

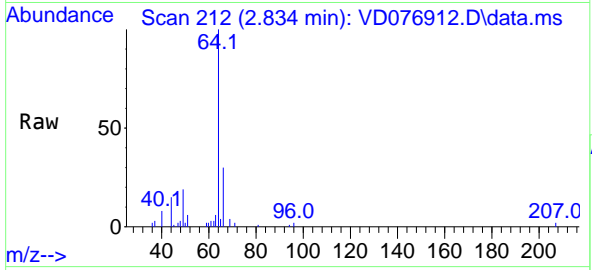
Tgt Ion: 94 Resp: 32276  
 Ion Ratio Lower Upper  
 94 100  
 96 90.8 64.7 120.1



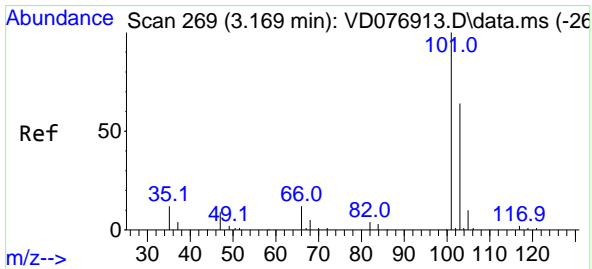
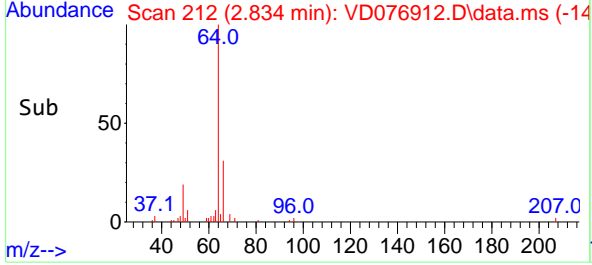
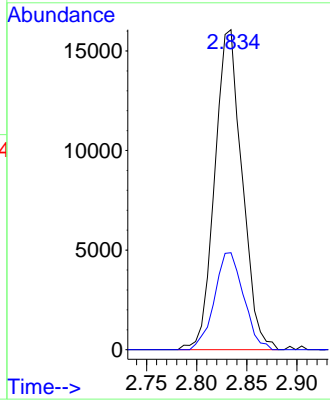


#8  
 Chloroethane  
 Concen: 6.388 ug/L  
 RT: 2.834 min Scan# 21  
 Delta R.T. -0.000 min  
 Lab File: VD076912.D  
 Acq: 03 Aug 2023 10:33

Instrument :  
 MSVOA\_D  
 ClientSampleId :

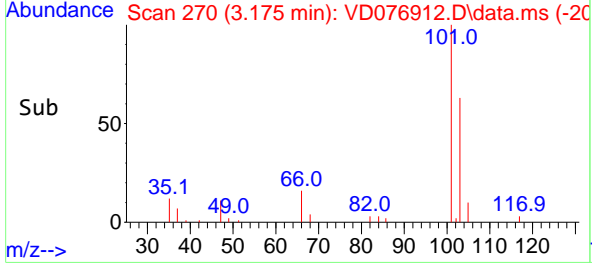
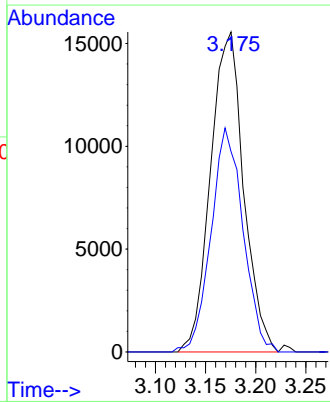
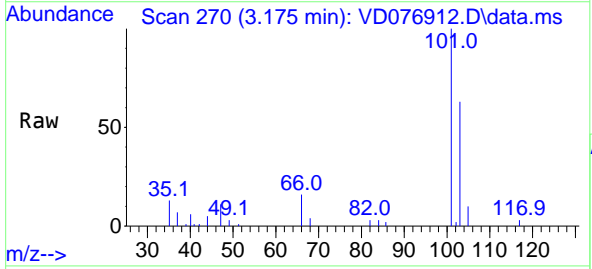


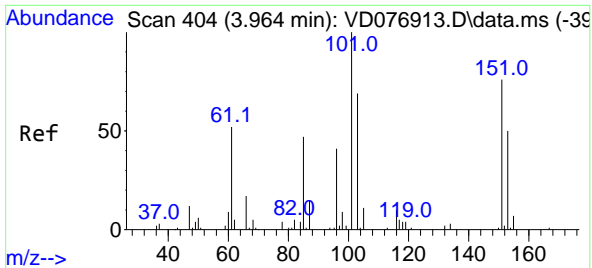
Tgt Ion: 64 Resp: 30501  
 Ion Ratio Lower Upper  
 64 100  
 66 30.3 22.1 41.1



#9  
 Trichlorofluoromethane  
 Concen: 6.230 ug/L  
 RT: 3.175 min Scan# 270  
 Delta R.T. 0.006 min  
 Lab File: VD076912.D  
 Acq: 03 Aug 2023 10:33

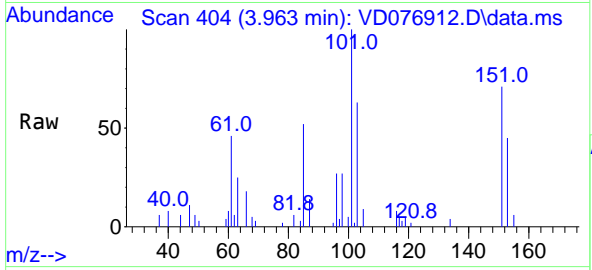
Tgt Ion: 101 Resp: 35757  
 Ion Ratio Lower Upper  
 101 100  
 103 67.6 51.8 77.6



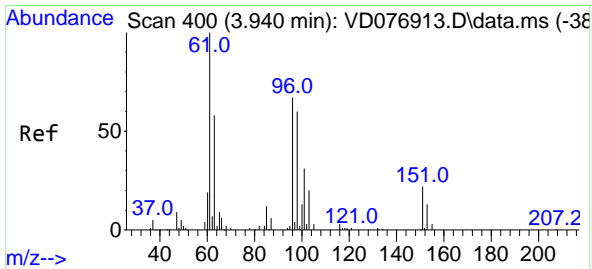
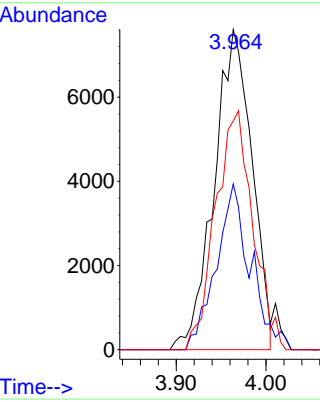
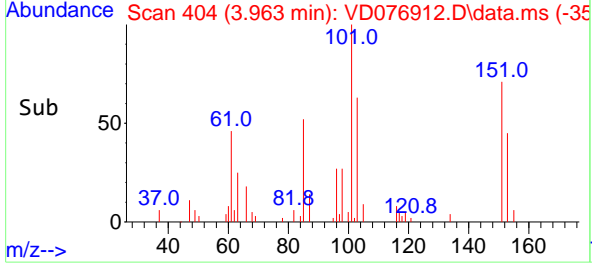


#10  
 1,1,2-Trichloro-1,2,2-trifluoroethane  
 Concen: 5.977 ug/L  
 RT: 3.963 min Scan# 400  
 Delta R.T. -0.000 min  
 Lab File: VD076912.D  
 Acq: 03 Aug 2023 10:33

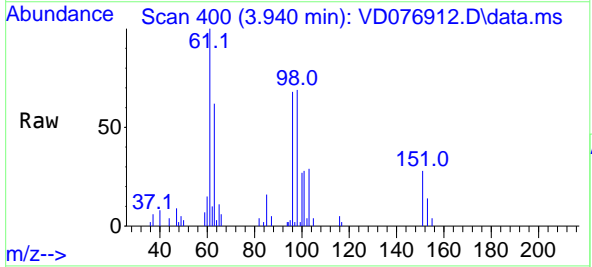
Instrument : MSVOA\_D  
 ClientSampleId :



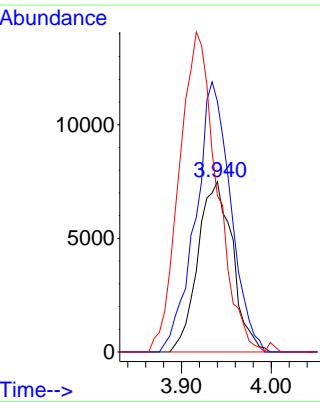
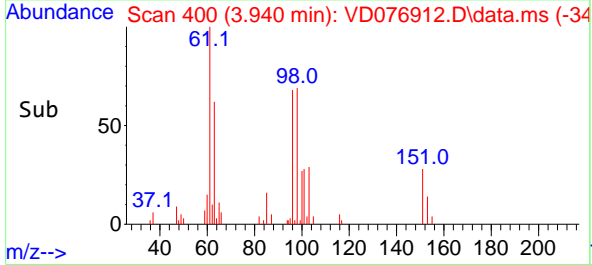
Tgt Ion:101 Resp: 22294  
 Ion Ratio Lower Upper  
 101 100  
 85 37.7 35.5 53.3  
 151 74.0 58.6 87.8

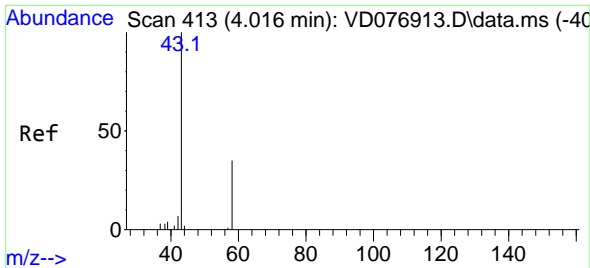


#12  
 1,1-Dichloroethene  
 Concen: 5.629 ug/L  
 RT: 3.940 min Scan# 400  
 Delta R.T. 0.000 min  
 Lab File: VD076912.D  
 Acq: 03 Aug 2023 10:33



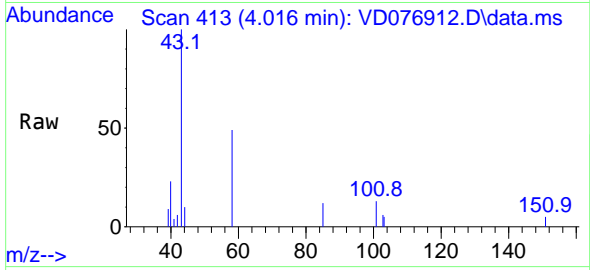
Tgt Ion: 96 Resp: 20177  
 Ion Ratio Lower Upper  
 96 100  
 61 147.2 113.0 209.8  
 63 91.8 83.6 155.2



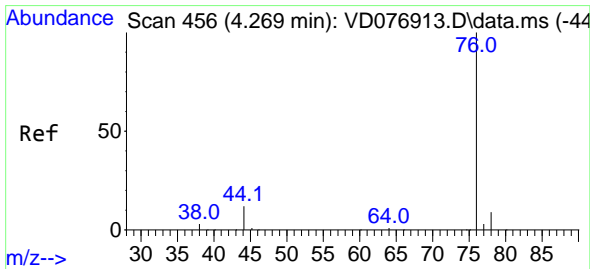
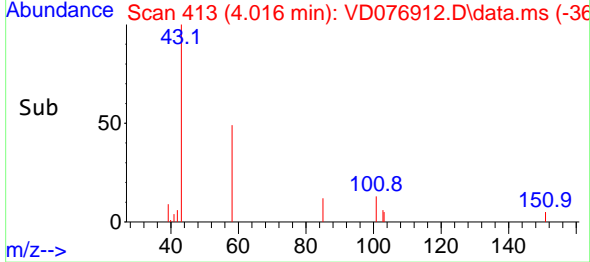
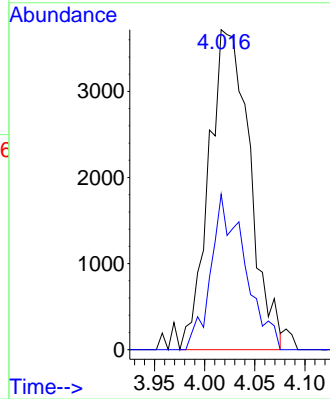


#13  
 Acetone  
 Concen: 11.577 ug/L  
 RT: 4.016 min Scan# 413  
 Delta R.T. 0.000 min  
 Lab File: VD076912.D  
 Acq: 03 Aug 2023 10:33

Instrument :  
 MSVOA\_D  
 ClientSampleId :

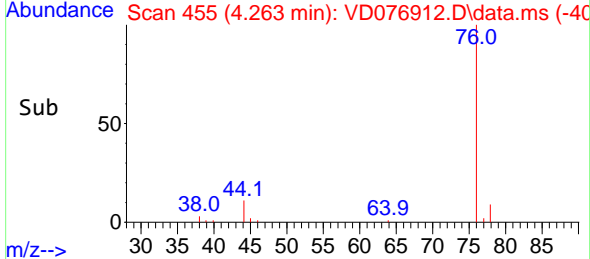
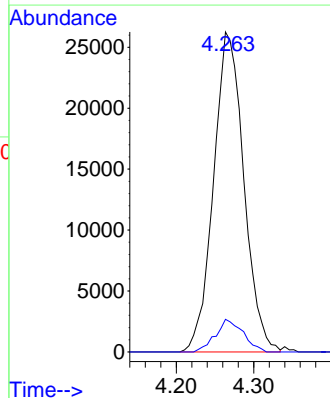
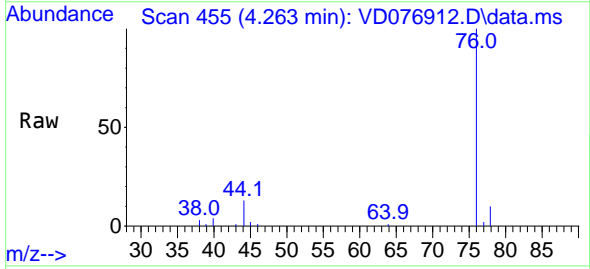


Tgt Ion: 43 Resp: 10553  
 Ion Ratio Lower Upper  
 43 100  
 58 17.5 0.0 67.4

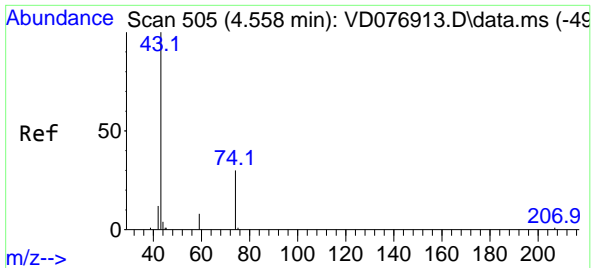


#14  
 Carbon disulfide  
 Concen: 5.511 ug/L  
 RT: 4.263 min Scan# 455  
 Delta R.T. -0.006 min  
 Lab File: VD076912.D  
 Acq: 03 Aug 2023 10:33

Tgt Ion: 76 Resp: 71360  
 Ion Ratio Lower Upper  
 76 100  
 78 10.2 7.0 10.4

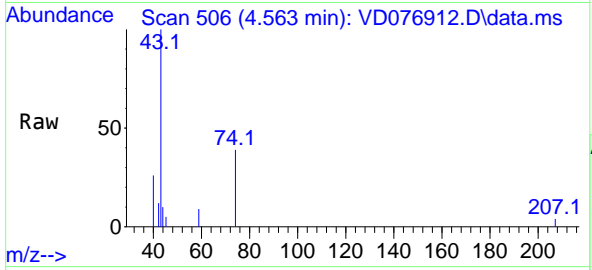




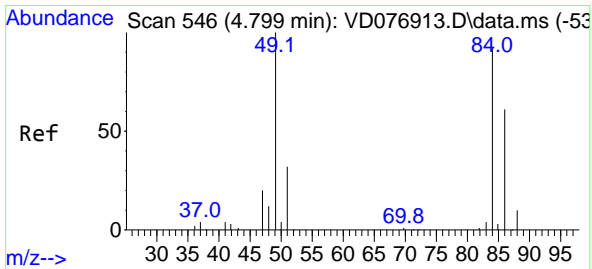
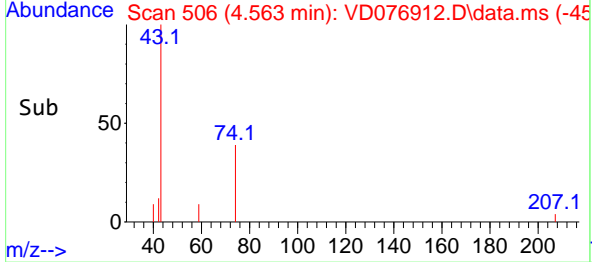
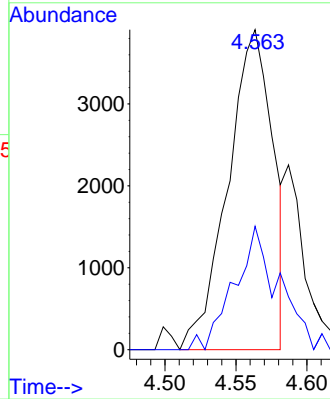


#15  
 Methyl Acetate  
 Concen: 4.641 ug/L  
 RT: 4.563 min Scan# 505  
 Delta R.T. 0.006 min  
 Lab File: VD076912.D  
 Acq: 03 Aug 2023 10:33

Instrument : MSVOA\_D  
 ClientSampleId :

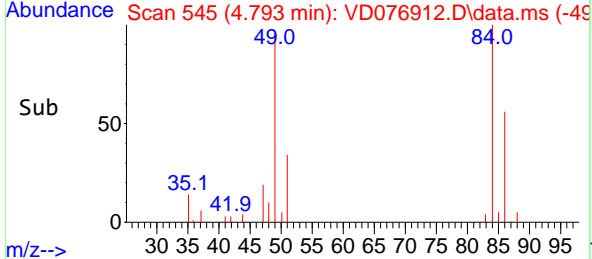
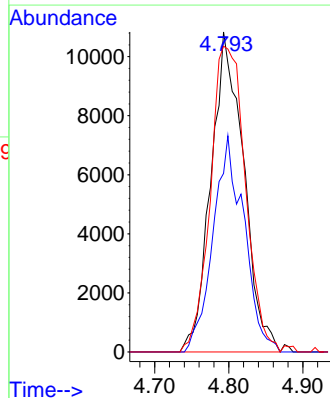
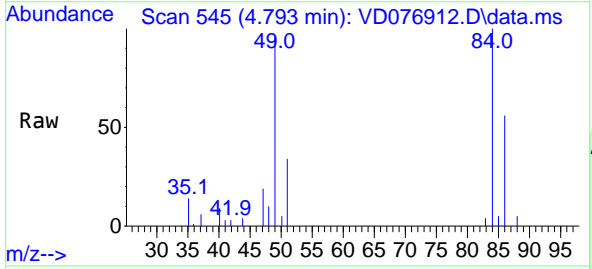


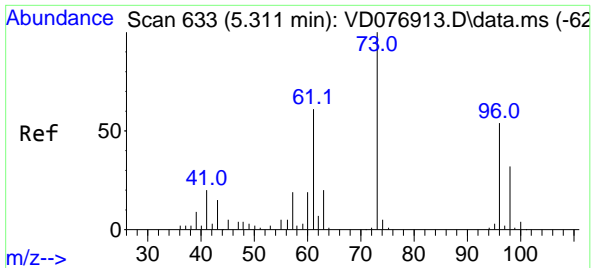
Tgt Ion: 43 Resp: 8634  
 Ion Ratio Lower Upper  
 43 100  
 74 27.3 18.2 27.2#



#16  
 Methylene chloride  
 Concen: 6.838 ug/L  
 RT: 4.793 min Scan# 545  
 Delta R.T. -0.006 min  
 Lab File: VD076912.D  
 Acq: 03 Aug 2023 10:33

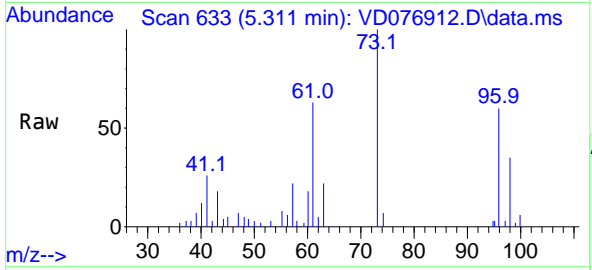
Tgt Ion: 84 Resp: 32999  
 Ion Ratio Lower Upper  
 84 100  
 86 55.8 45.1 83.9  
 49 95.5 97.2 180.6#



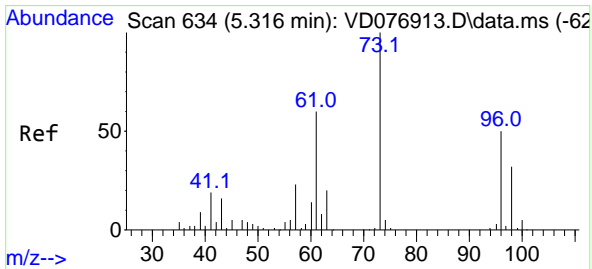
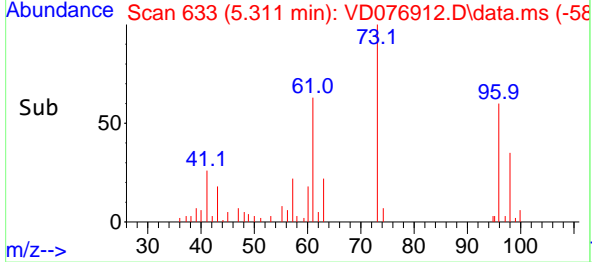
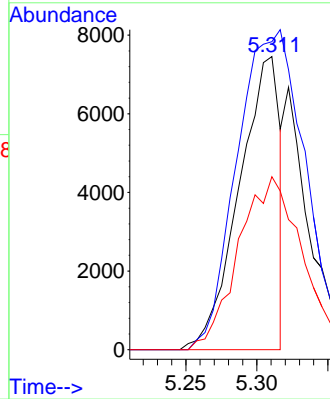


#17  
 trans-1,2-Dichloroethene  
 Concen: 3.693 ug/L  
 RT: 5.311 min Scan# 611  
 Delta R.T. 0.000 min  
 Lab File: VD076912.D  
 Acq: 03 Aug 2023 10:33

Instrument :  
 MSVOA\_D  
 ClientSampleId :

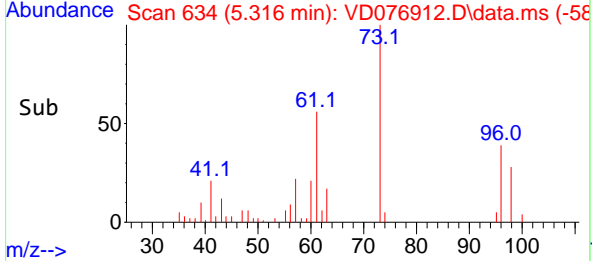
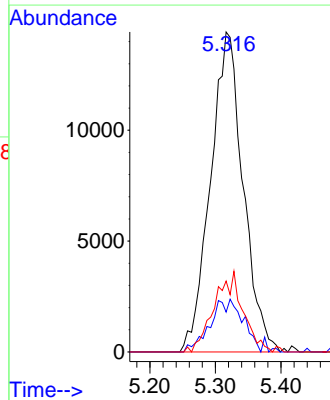
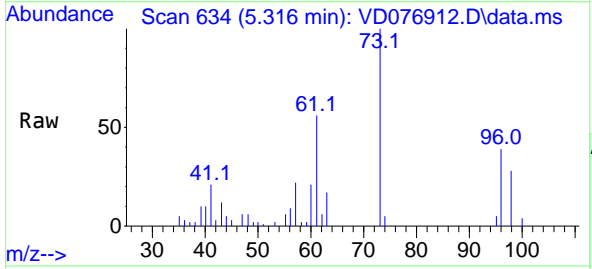


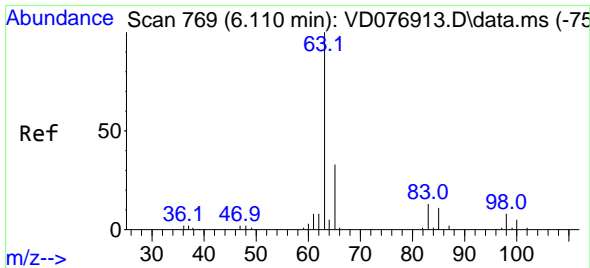
Tgt Ion: 96 Resp: 14898  
 Ion Ratio Lower Upper  
 96 100  
 61 105.1 94.5 175.5  
 98 59.0 46.0 85.4



#18  
 Methyl tert-butyl Ether  
 Concen: 5.444 ug/L  
 RT: 5.316 min Scan# 634  
 Delta R.T. 0.000 min  
 Lab File: VD076912.D  
 Acq: 03 Aug 2023 10:33

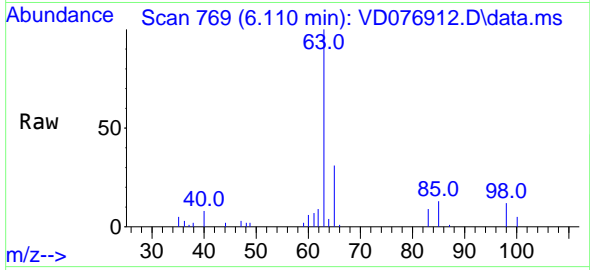
Tgt Ion: 73 Resp: 49795  
 Ion Ratio Lower Upper  
 73 100  
 43 6.9 7.2 10.8#  
 57 12.9 18.6 28.0#





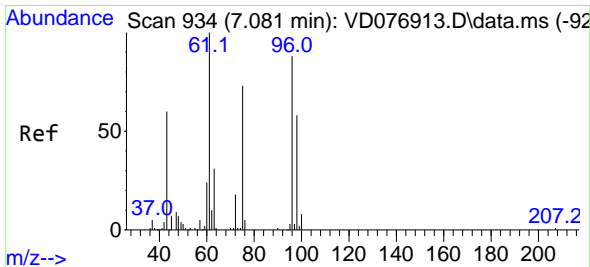
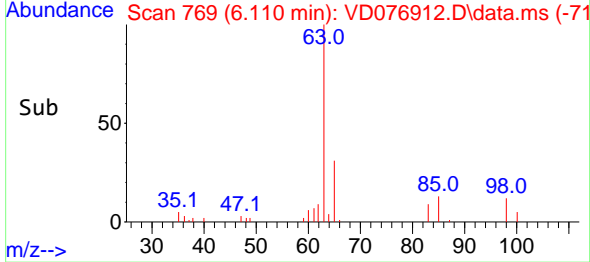
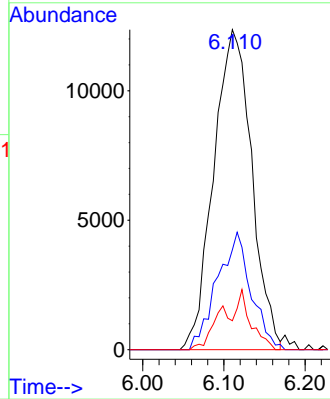
#19  
 1,1-Dichloroethane  
 Concen: 5.583 ug/L  
 RT: 6.110 min Scan# 769  
 Delta R.T. -0.000 min  
 Lab File: VD076912.D  
 Acq: 03 Aug 2023 10:33

Instrument : MSVOA\_D  
 ClientSampleId :



Tgt Ion: 63 Resp: 40248

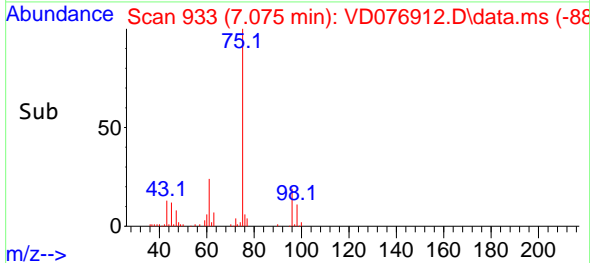
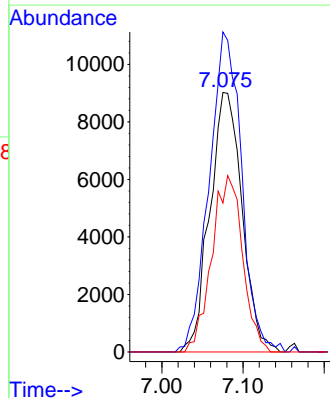
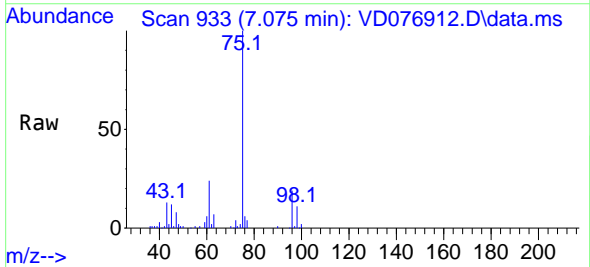
| Ion | Ratio | Lower | Upper |
|-----|-------|-------|-------|
| 63  | 100   |       |       |
| 65  | 31.2  | 20.8  | 38.6  |
| 83  | 9.0   | 8.9   | 16.5  |

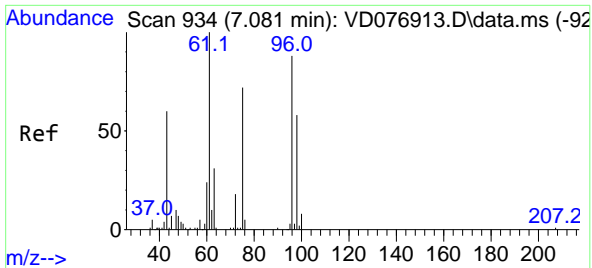


#20  
 cis-1,2-Dichloroethene  
 Concen: 5.548 ug/L  
 RT: 7.075 min Scan# 933  
 Delta R.T. -0.006 min  
 Lab File: VD076912.D  
 Acq: 03 Aug 2023 10:33

Tgt Ion: 96 Resp: 24910

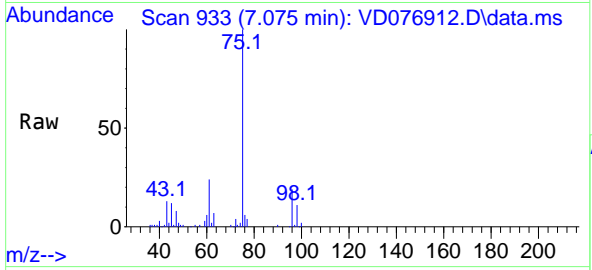
| Ion | Ratio | Lower | Upper |
|-----|-------|-------|-------|
| 96  | 100   |       |       |
| 61  | 123.3 | 86.0  | 159.6 |
| 98  | 57.4  | 42.2  | 78.4  |



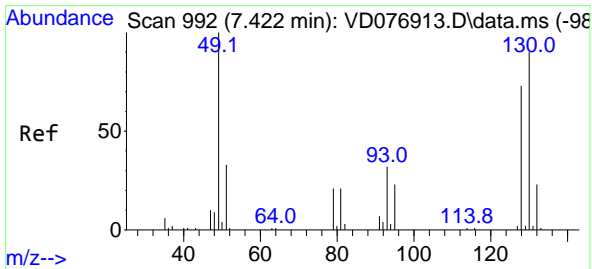
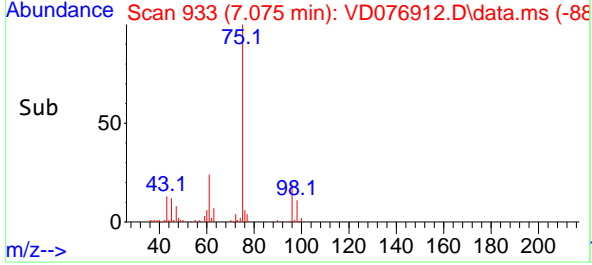
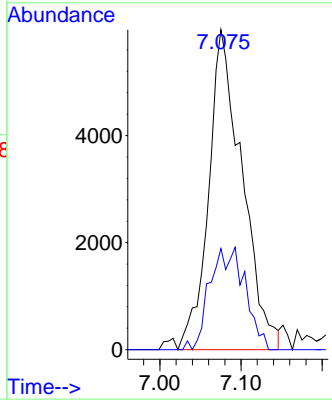


#22  
 2-Butanone  
 Concen: 12.384 ug/L  
 RT: 7.075 min Scan# 911  
 Delta R.T. -0.006 min  
 Lab File: VD076912.D  
 Acq: 03 Aug 2023 10:33

Instrument :  
 MSVOA\_D  
 ClientSampleId :

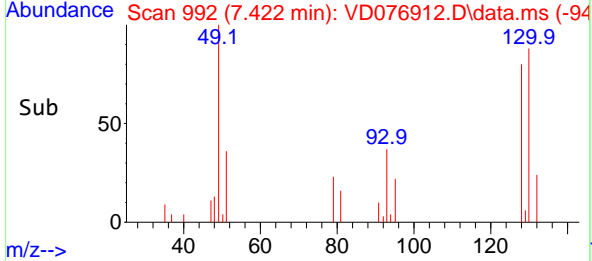
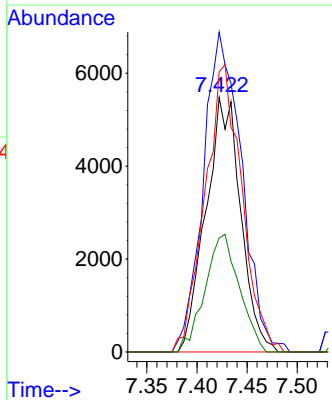
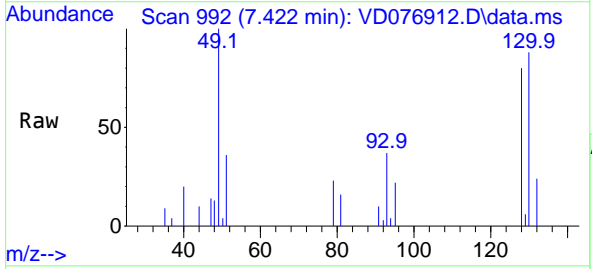


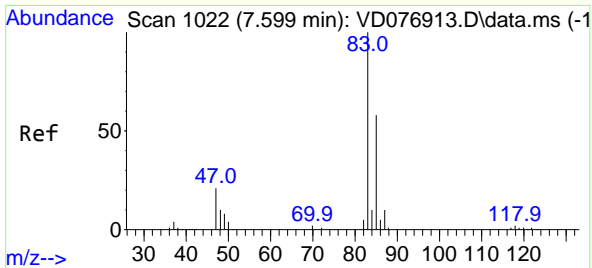
Tgt Ion: 43 Resp: 17147  
 Ion Ratio Lower Upper  
 43 100  
 72 16.4 12.9 38.7



#23  
 Bromochloromethane  
 Concen: 6.807 ug/L  
 RT: 7.422 min Scan# 992  
 Delta R.T. -0.000 min  
 Lab File: VD076912.D  
 Acq: 03 Aug 2023 10:33

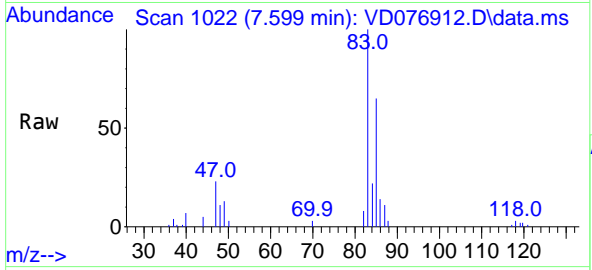
Tgt Ion:128 Resp: 13268  
 Ion Ratio Lower Upper  
 128 100  
 49 125.7 124.7 231.7  
 130 110.0 80.0 148.6  
 51 44.7 42.7 64.1



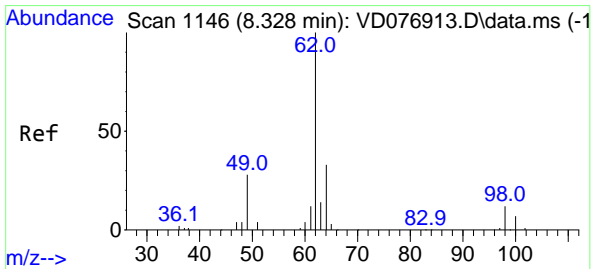
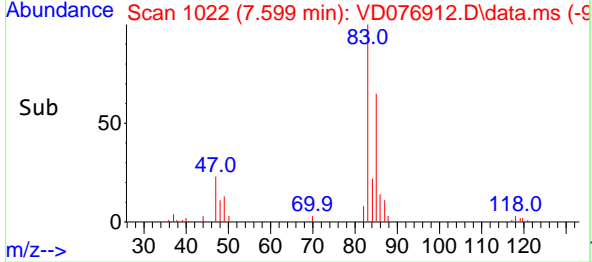
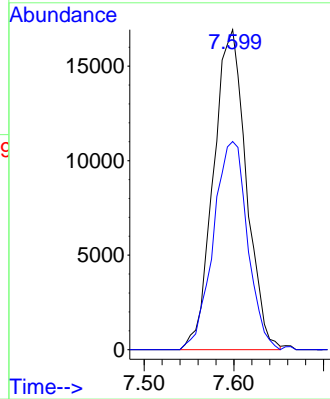


#25  
 Chloroform  
 Concen: 5.950 ug/L  
 RT: 7.599 min Scan# 1022  
 Delta R.T. -0.000 min  
 Lab File: VD076912.D  
 Acq: 03 Aug 2023 10:33

Instrument : MSVOA\_D  
 ClientSampleId :

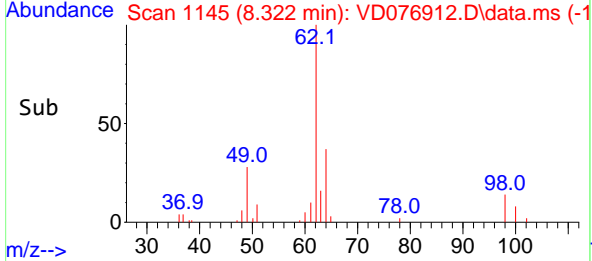
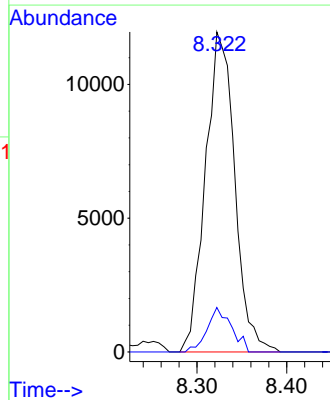
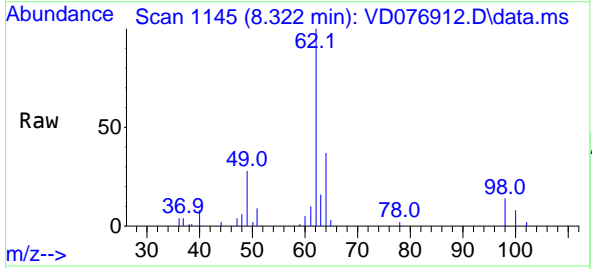


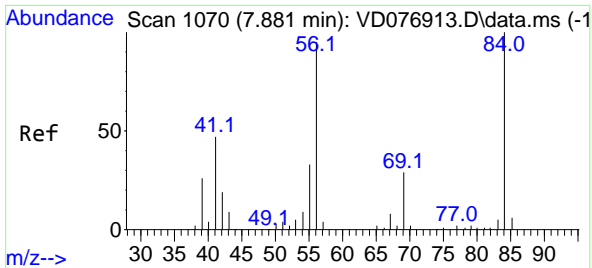
Tgt Ion: 83 Resp: 42958  
 Ion Ratio Lower Upper  
 83 100  
 85 65.1 45.4 84.4



#27  
 1,2-Dichloroethane  
 Concen: 6.104 ug/L  
 RT: 8.322 min Scan# 1145  
 Delta R.T. -0.006 min  
 Lab File: VD076912.D  
 Acq: 03 Aug 2023 10:33

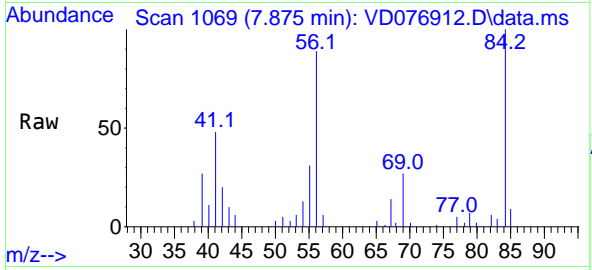
Tgt Ion: 62 Resp: 27140  
 Ion Ratio Lower Upper  
 62 100  
 98 13.9 8.7 13.1#





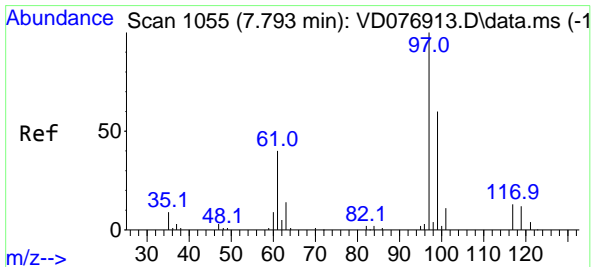
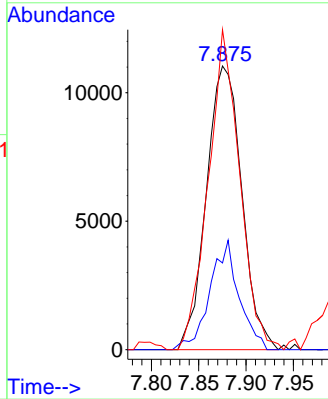
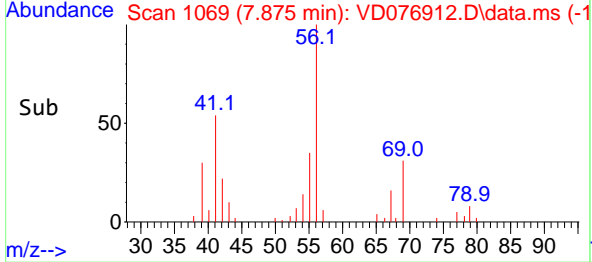
#29  
 Cyclohexane  
 Concen: 4.080 ug/L  
 RT: 7.875 min Scan# 1069  
 Delta R.T. -0.006 min  
 Lab File: VD076912.D  
 Acq: 03 Aug 2023 10:33

Instrument : MSVOA\_D  
 ClientSampleId :

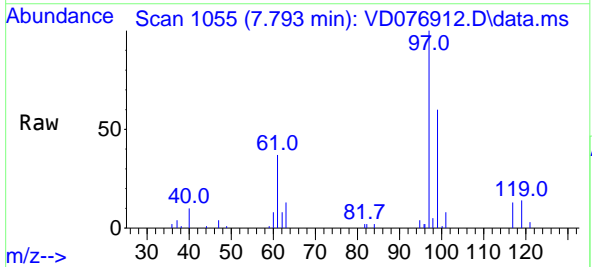


Tgt Ion: 56 Resp: 28765

| Ion | Ratio | Lower | Upper |
|-----|-------|-------|-------|
| 56  | 100   |       |       |
| 69  | 30.6  | 23.4  | 35.0  |
| 84  | 99.9  | 66.3  | 99.5  |

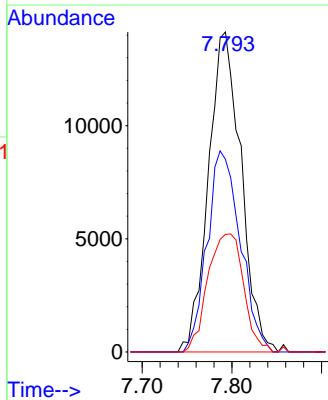
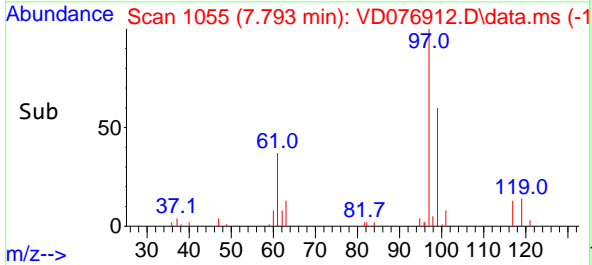


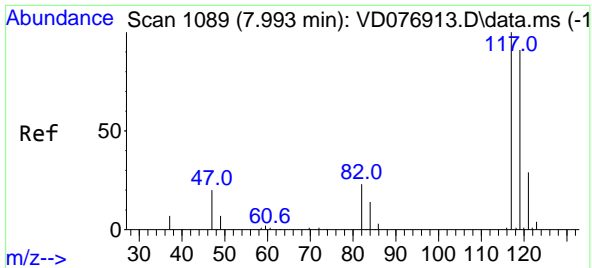
#30  
 1,1,1-Trichloroethane  
 Concen: 5.568 ug/L  
 RT: 7.793 min Scan# 1055  
 Delta R.T. -0.000 min  
 Lab File: VD076912.D  
 Acq: 03 Aug 2023 10:33



Tgt Ion: 97 Resp: 35649

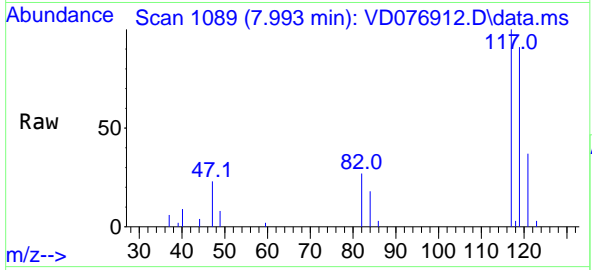
| Ion | Ratio | Lower | Upper |
|-----|-------|-------|-------|
| 97  | 100   |       |       |
| 99  | 64.0  | 51.0  | 76.6  |
| 61  | 40.5  | 36.4  | 54.6  |



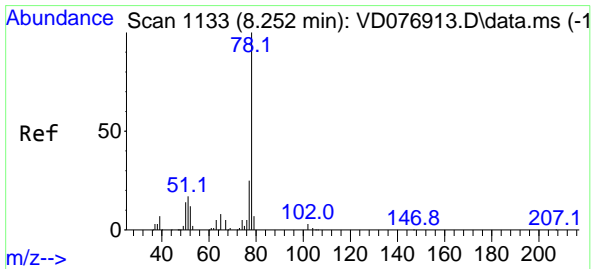
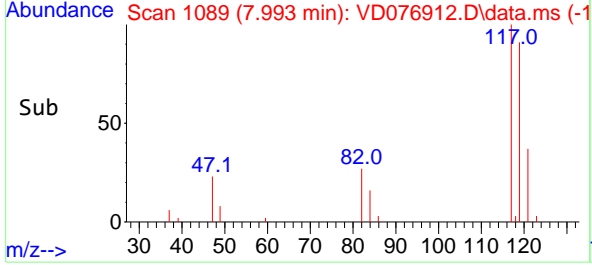
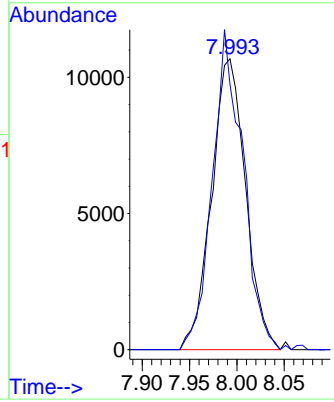


#31  
 Carbon tetrachloride  
 Concen: 5.156 ug/L  
 RT: 7.993 min Scan# 1089  
 Delta R.T. -0.000 min  
 Lab File: VD076912.D  
 Acq: 03 Aug 2023 10:33

Instrument : MSVOA\_D  
 ClientSampleId :

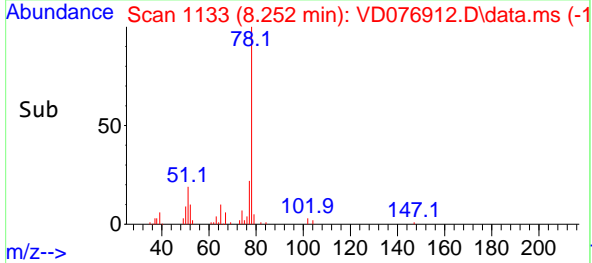
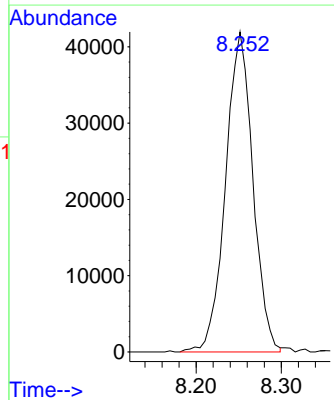
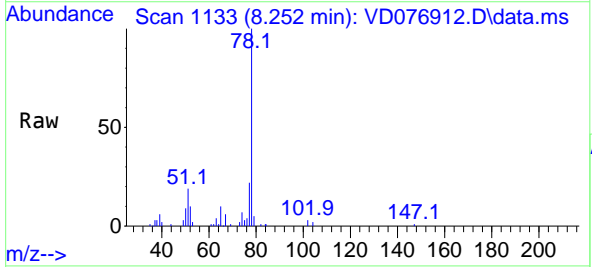


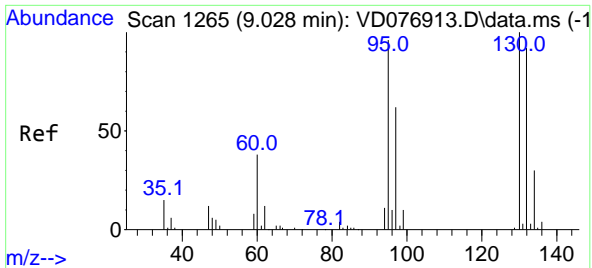
Tgt Ion: 117 Resp: 26698  
 Ion Ratio Lower Upper  
 117 100  
 119 99.0 77.8 116.6



#33  
 Benzene  
 Concen: 5.188 ug/L  
 RT: 8.252 min Scan# 1133  
 Delta R.T. -0.000 min  
 Lab File: VD076912.D  
 Acq: 03 Aug 2023 10:33

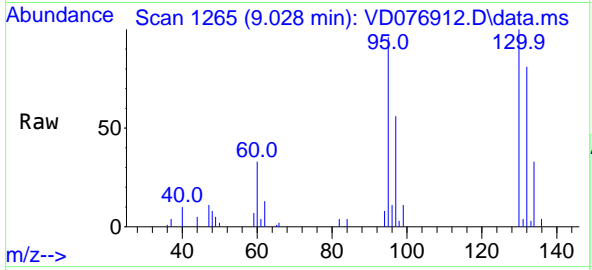
Tgt Ion: 78 Resp: 93437





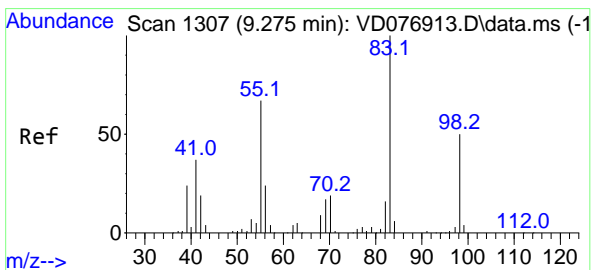
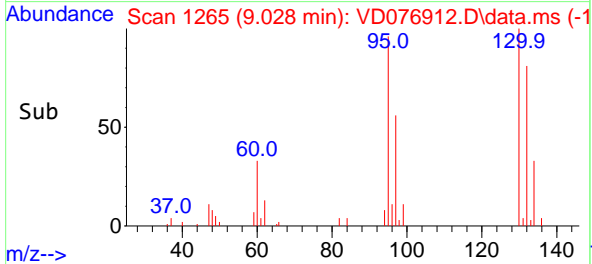
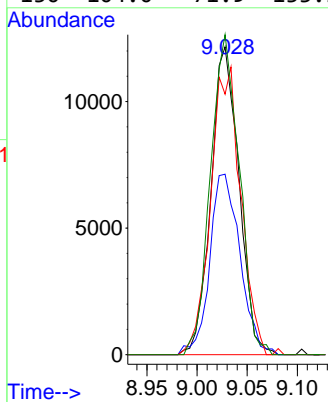
#34  
 Trichloroethene  
 Concen: 5.123 ug/L  
 RT: 9.028 min Scan# 11  
 Delta R.T. 0.000 min  
 Lab File: VD076912.D  
 Acq: 03 Aug 2023 10:33

Instrument :  
 MSVOA\_D  
 ClientSampleId :



Tgt Ion: 95 Resp: 23650

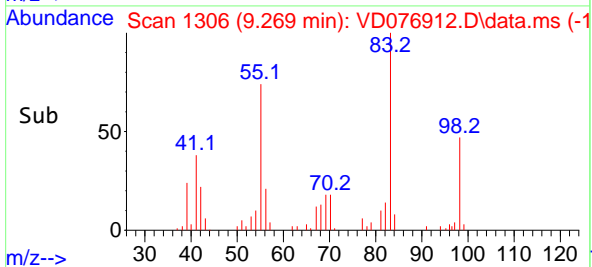
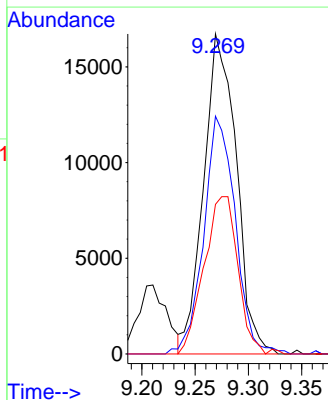
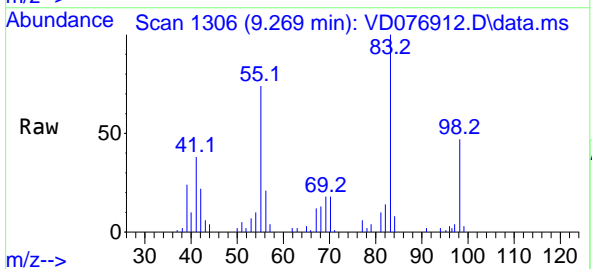
| Ion | Ratio | Lower | Upper |
|-----|-------|-------|-------|
| 95  | 100   |       |       |
| 97  | 58.7  | 43.1  | 80.1  |
| 132 | 84.6  | 71.8  | 133.4 |
| 130 | 104.0 | 71.9  | 133.5 |



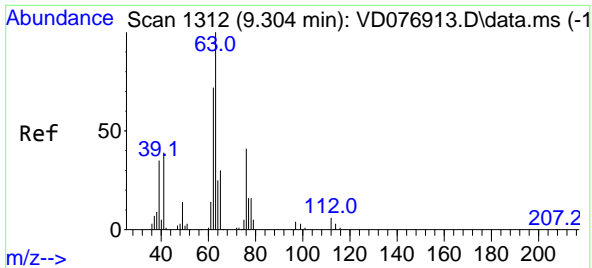
#35  
 Methylcyclohexane  
 Concen: 4.726 ug/L  
 RT: 9.269 min Scan# 1306  
 Delta R.T. -0.006 min  
 Lab File: VD076912.D  
 Acq: 03 Aug 2023 10:33

Tgt Ion: 83 Resp: 35610

| Ion | Ratio | Lower | Upper |
|-----|-------|-------|-------|
| 83  | 100   |       |       |
| 55  | 71.8  | 59.8  | 89.6  |
| 98  | 50.8  | 37.8  | 56.6  |

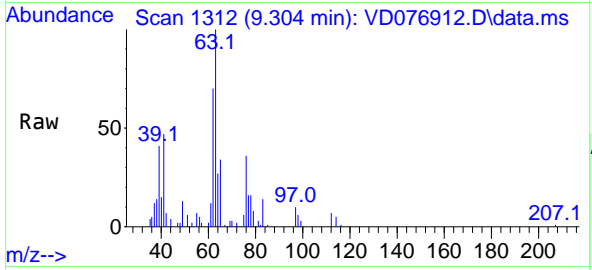




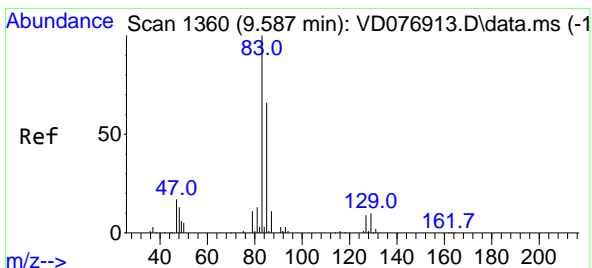
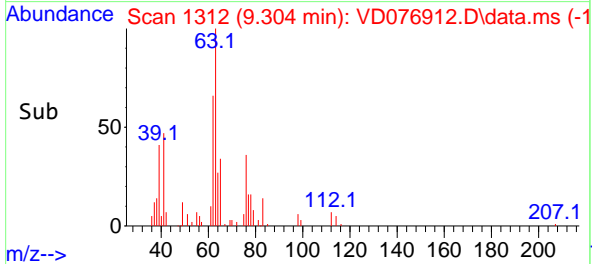
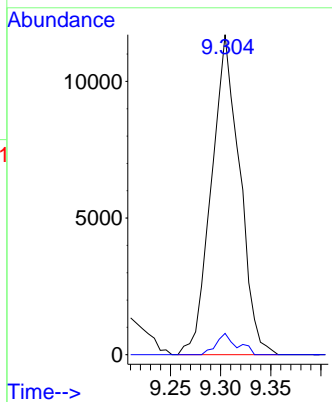


#37  
 1,2-Dichloropropane  
 Concen: 4.698 ug/L  
 RT: 9.304 min Scan# 1112  
 Delta R.T. -0.000 min  
 Lab File: VD076912.D  
 Acq: 03 Aug 2023 10:33

Instrument : MSVOA\_D  
 ClientSampleId :

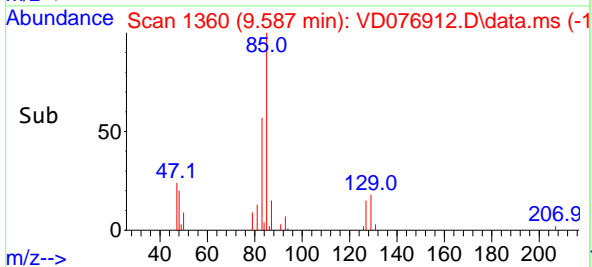
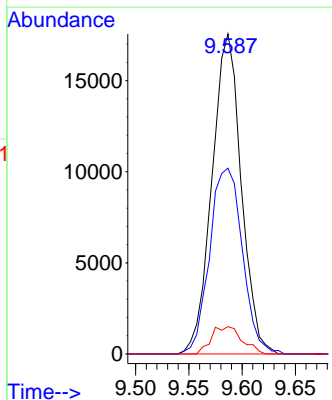
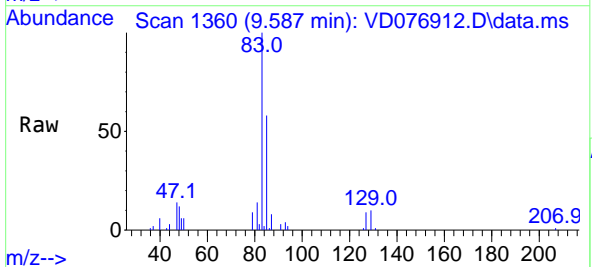


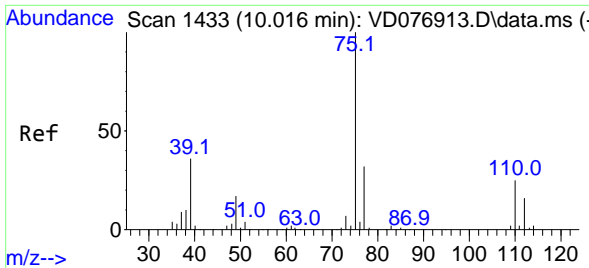
Tgt Ion: 63 Resp: 22939  
 Ion Ratio Lower Upper  
 63 100  
 112 3.8 3.1 4.7



#38  
 Bromodichloromethane  
 Concen: 5.890 ug/L  
 RT: 9.587 min Scan# 1360  
 Delta R.T. -0.000 min  
 Lab File: VD076912.D  
 Acq: 03 Aug 2023 10:33

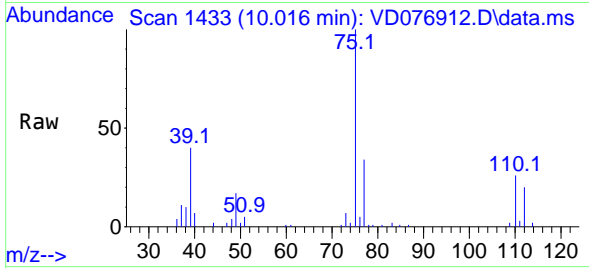
Tgt Ion: 83 Resp: 33566  
 Ion Ratio Lower Upper  
 83 100  
 85 58.1 43.9 81.5  
 127 8.5 6.6 9.8



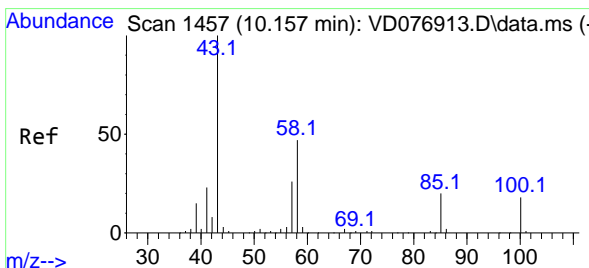
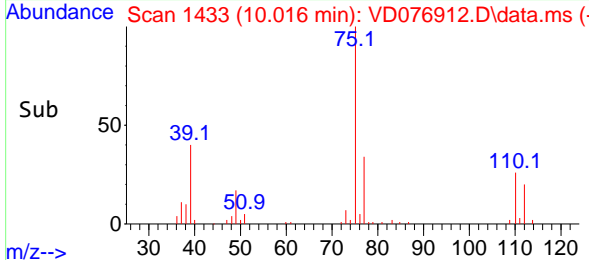
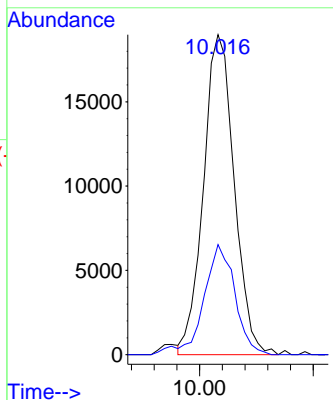


#39  
 cis-1,3-Dichloropropene  
 Concen: 4.755 ug/L  
 RT: 10.016 min Scan# 1433  
 Delta R.T. 0.000 min  
 Lab File: VD076912.D  
 Acq: 03 Aug 2023 10:33

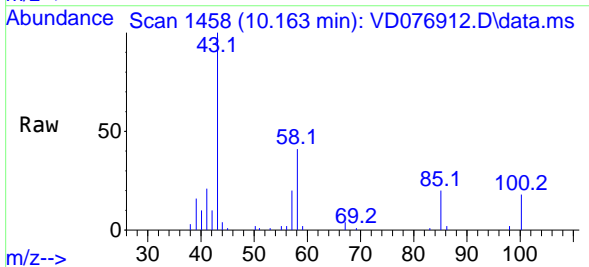
Instrument : MSVOA\_D  
 ClientSampleId :



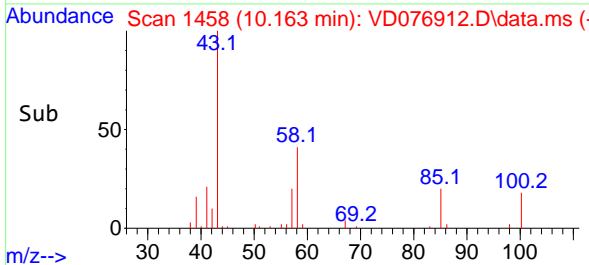
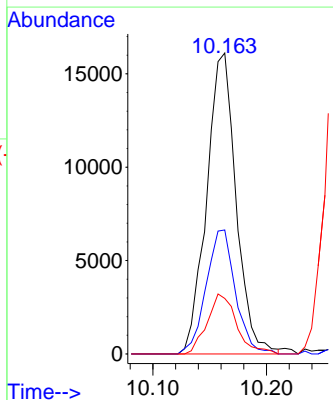
Tgt Ion: 75 Resp: 35681  
 Ion Ratio Lower Upper  
 75 100  
 77 34.4 22.7 42.3

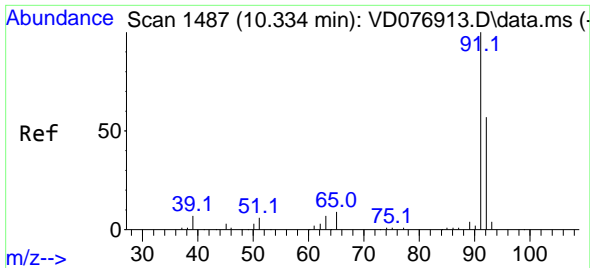


#40  
 4-Methyl-2-pentanone  
 Concen: 9.618 ug/L  
 RT: 10.163 min Scan# 1458  
 Delta R.T. 0.006 min  
 Lab File: VD076912.D  
 Acq: 03 Aug 2023 10:33



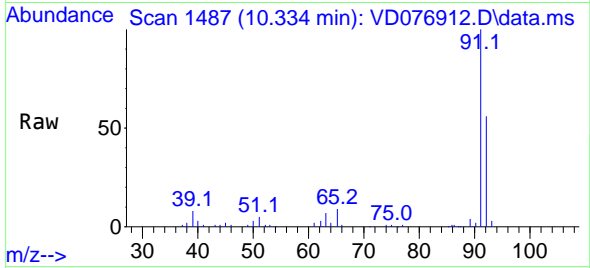
Tgt Ion: 43 Resp: 29060  
 Ion Ratio Lower Upper  
 43 100  
 58 40.8 30.7 46.1  
 100 19.9 11.0 16.4#



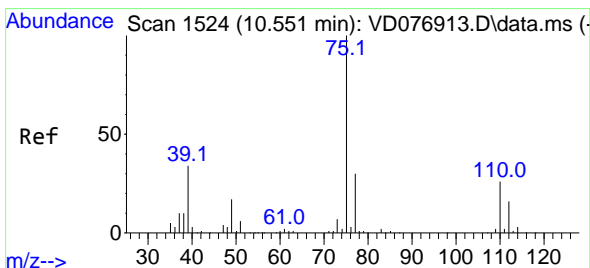
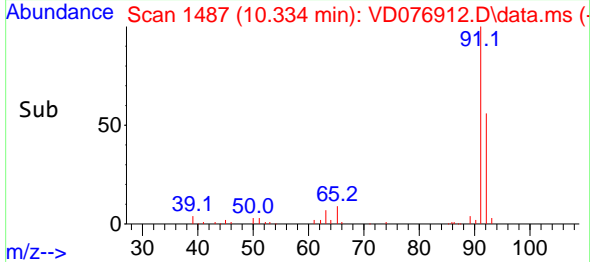
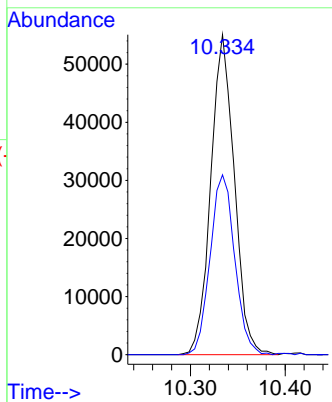


#42  
 Toluene  
 Concen: 4.918 ug/L  
 RT: 10.334 min Scan# 1487  
 Delta R.T. -0.000 min  
 Lab File: VD076912.D  
 Acq: 03 Aug 2023 10:33

Instrument : MSVOA\_D  
 ClientSampleId :

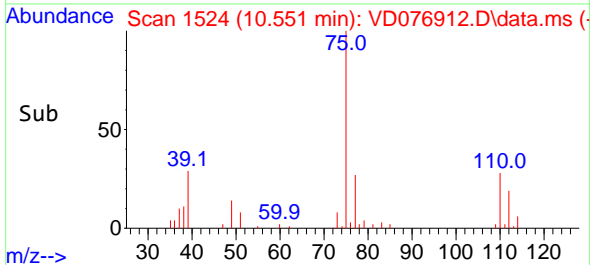
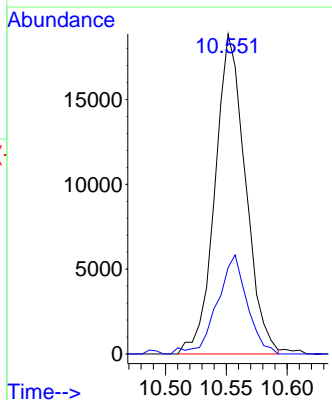
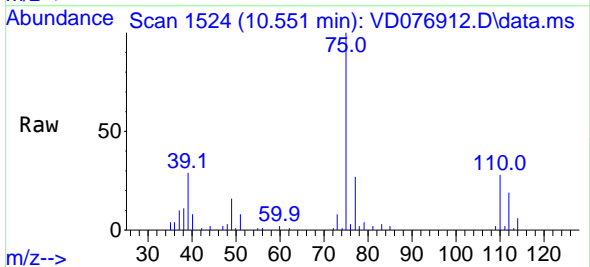


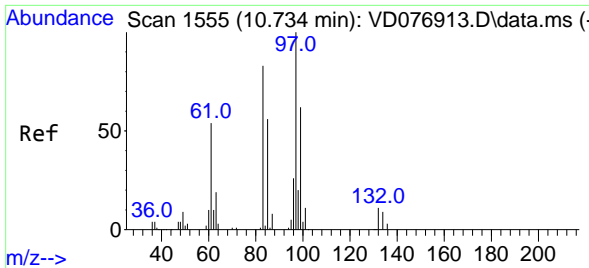
Tgt Ion: 91 Resp: 95273  
 Ion Ratio Lower Upper  
 91 100  
 92 56.2 39.3 73.1



#44  
 trans-1,3-Dichloropropene  
 Concen: 5.328 ug/L  
 RT: 10.551 min Scan# 1524  
 Delta R.T. 0.000 min  
 Lab File: VD076912.D  
 Acq: 03 Aug 2023 10:33

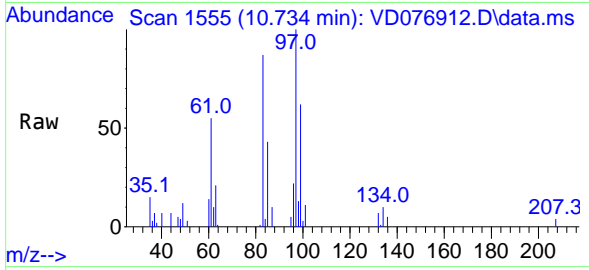
Tgt Ion: 75 Resp: 32823  
 Ion Ratio Lower Upper  
 75 100  
 77 27.0 22.5 41.7





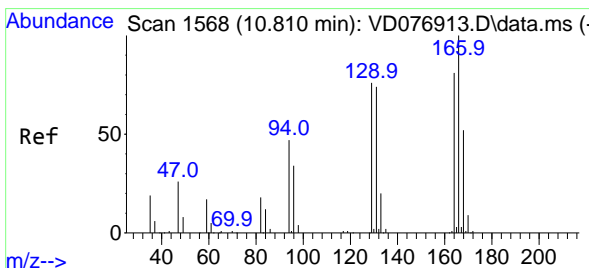
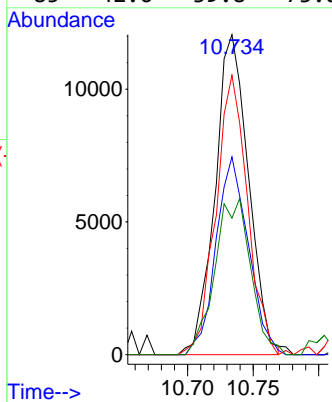
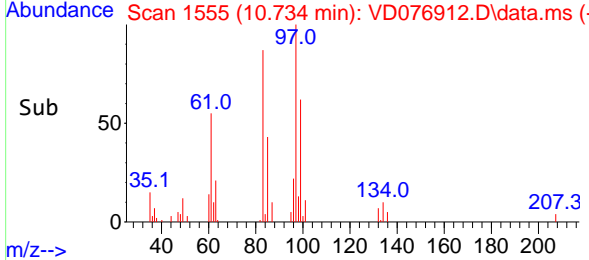
#45  
 1,1,2-Trichloroethane  
 Concen: 6.086 ug/L  
 RT: 10.734 min Scan# 1555  
 Delta R.T. -0.000 min  
 Lab File: VD076912.D  
 Acq: 03 Aug 2023 10:33

Instrument : MSVOA\_D  
 ClientSampleId :

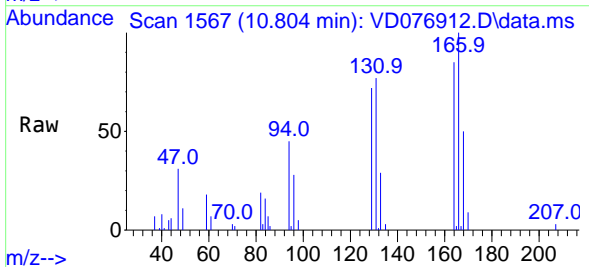


Tgt Ion: 97 Resp: 21378

| Ion | Ratio | Lower | Upper |
|-----|-------|-------|-------|
| 97  | 100   |       |       |
| 99  | 61.8  | 41.9  | 77.9  |
| 83  | 87.3  | 59.2  | 110.0 |
| 85  | 42.6  | 39.8  | 73.8  |

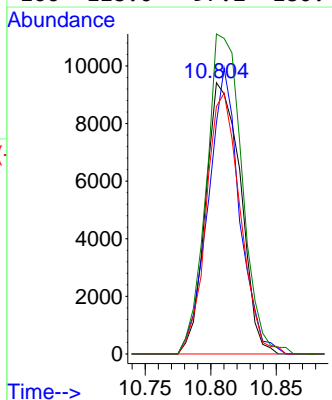
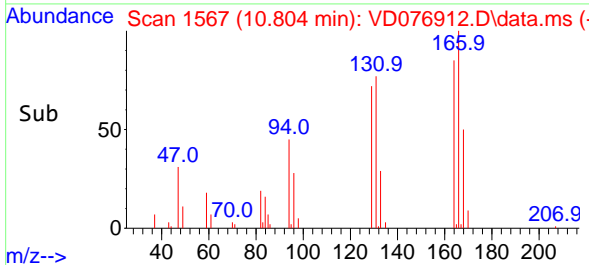


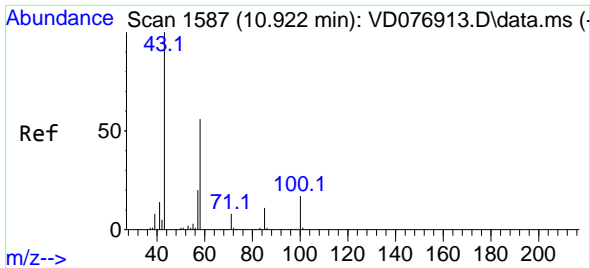
#46  
 Tetrachloroethene  
 Concen: 4.775 ug/L  
 RT: 10.804 min Scan# 1567  
 Delta R.T. -0.006 min  
 Lab File: VD076912.D  
 Acq: 03 Aug 2023 10:33



Tgt Ion: 164 Resp: 17449

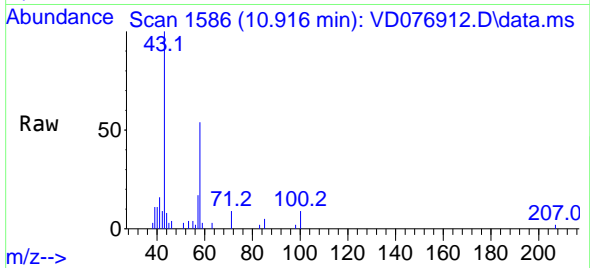
| Ion | Ratio | Lower | Upper |
|-----|-------|-------|-------|
| 164 | 100   |       |       |
| 129 | 85.3  | 65.5  | 121.6 |
| 131 | 91.2  | 64.8  | 120.3 |
| 166 | 118.0 | 97.2  | 180.4 |



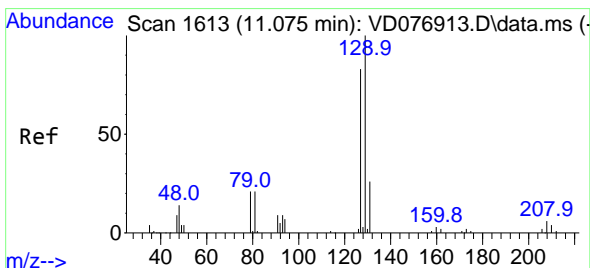
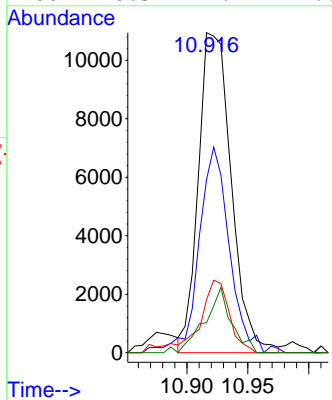
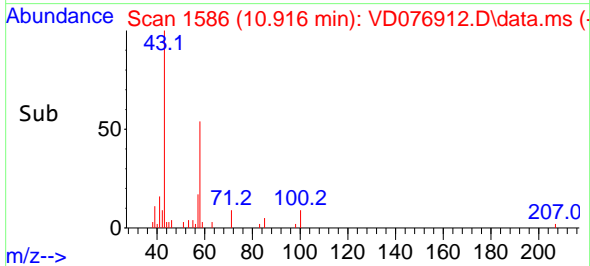


#48  
 2-Hexanone  
 Concen: 9.659 ug/L  
 RT: 10.916 min Scan# 11  
 Delta R.T. -0.006 min  
 Lab File: VD076912.D  
 Acq: 03 Aug 2023 10:33

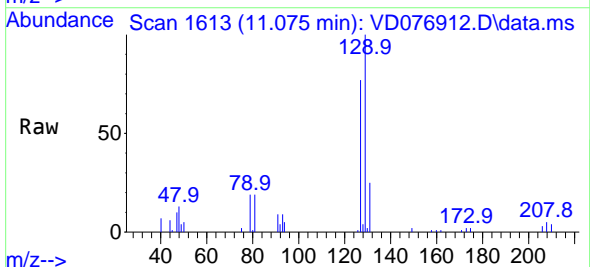
Instrument : MSVOA\_D  
 ClientSampleId :



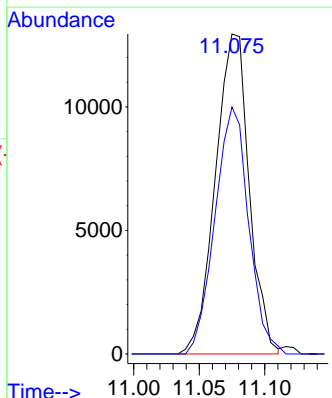
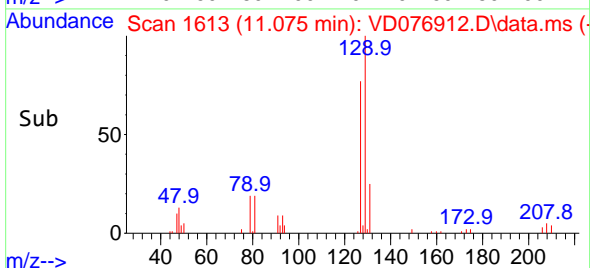
Tgt Ion: 43 Resp: 20569  
 Ion Ratio Lower Upper  
 43 100  
 58 56.1 42.9 64.3  
 57 19.1 13.7 20.5  
 100 16.3 9.4 14.0#

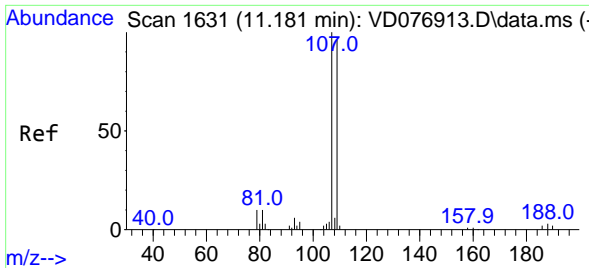


#49  
 Dibromochloromethane  
 Concen: 5.901 ug/L  
 RT: 11.075 min Scan# 1613  
 Delta R.T. 0.000 min  
 Lab File: VD076912.D  
 Acq: 03 Aug 2023 10:33



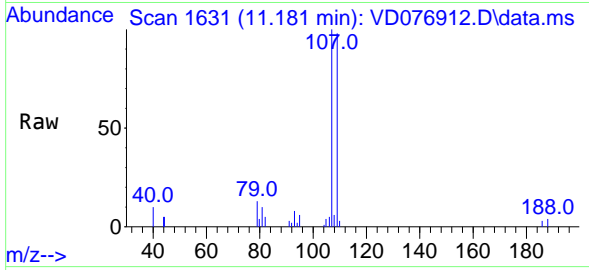
Tgt Ion:129 Resp: 23244  
 Ion Ratio Lower Upper  
 129 100  
 127 77.2 55.2 102.6



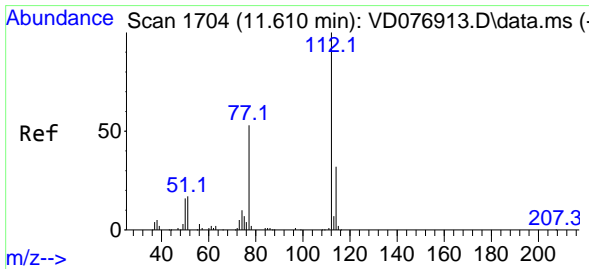
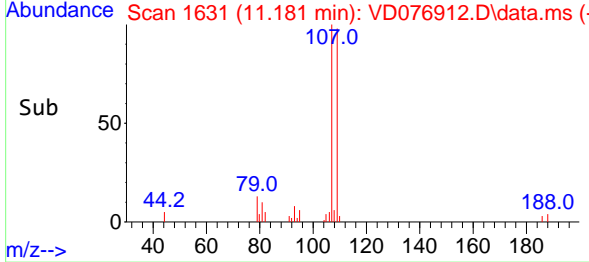
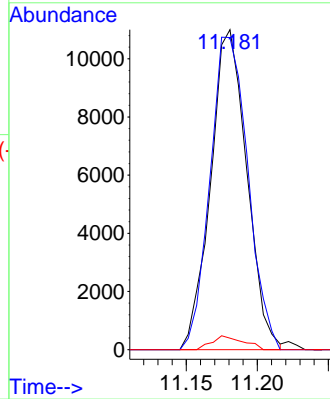


#50  
 1,2-Dibromoethane  
 Concen: 5.711 ug/L  
 RT: 11.181 min Scan# 1  
 Delta R.T. -0.000 min  
 Lab File: VD076912.D  
 Acq: 03 Aug 2023 10:33

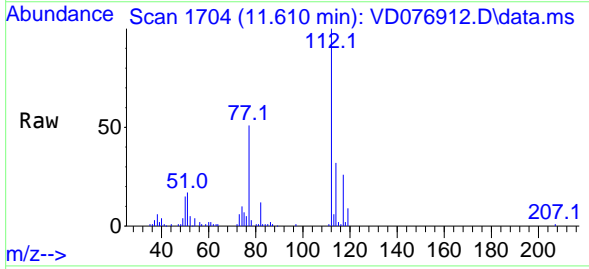
Instrument :  
 MSVOA\_D  
 ClientSampleId :



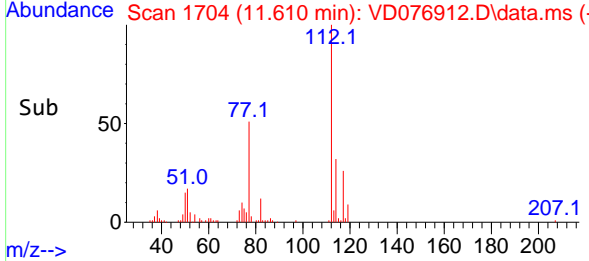
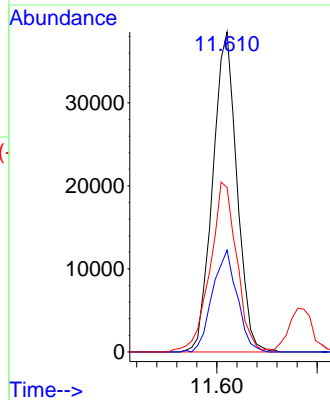
Tgt Ion:107 Resp: 19456  
 Ion Ratio Lower Upper  
 107 100  
 109 97.6 58.8 109.2  
 188 3.6 2.9 4.3

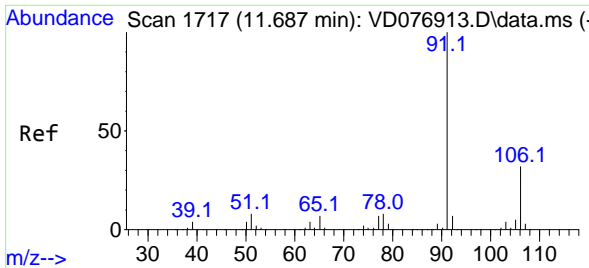


#51  
 Chlorobenzene  
 Concen: 5.330 ug/L  
 RT: 11.610 min Scan# 1704  
 Delta R.T. 0.000 min  
 Lab File: VD076912.D  
 Acq: 03 Aug 2023 10:33



Tgt Ion:112 Resp: 64508  
 Ion Ratio Lower Upper  
 112 100  
 114 31.8 21.5 39.9  
 77 51.4 43.4 65.2

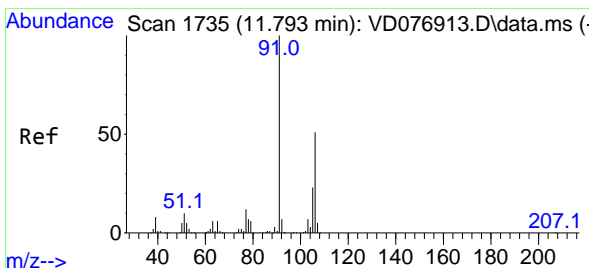
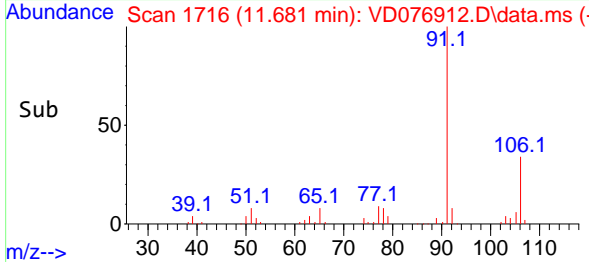
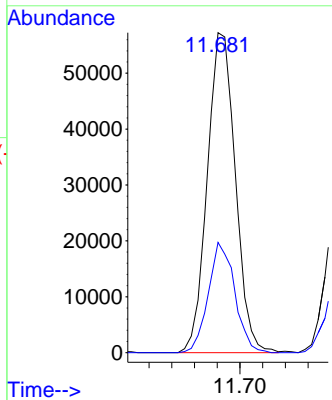
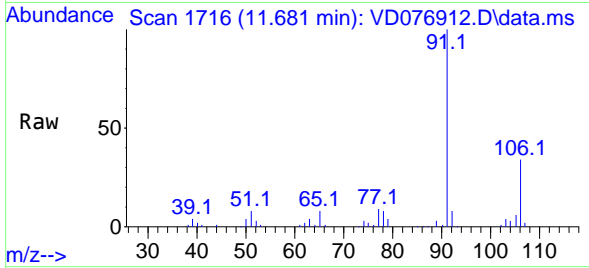




#52  
 Ethylbenzene  
 Concen: 4.713 ug/L  
 RT: 11.681 min Scan# 1716  
 Delta R.T. -0.006 min  
 Lab File: VD076912.D  
 Acq: 03 Aug 2023 10:33

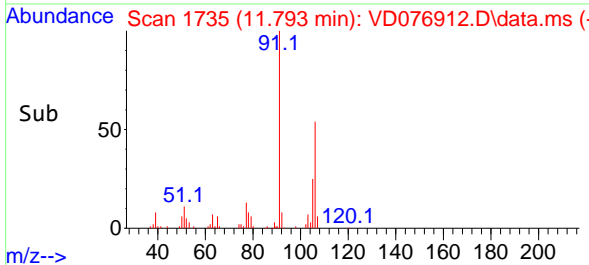
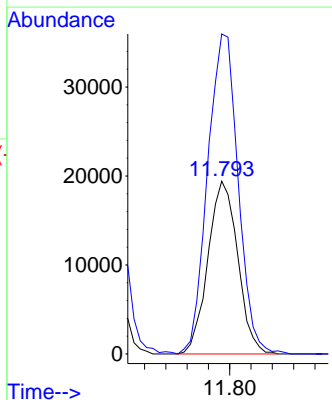
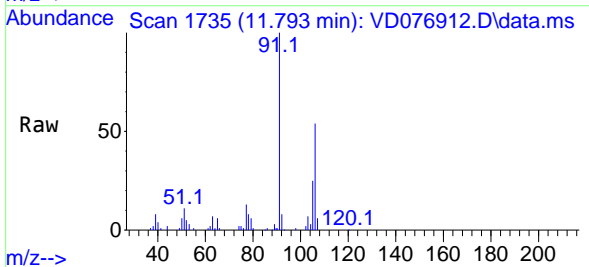
Instrument : MSVOA\_D  
 ClientSampleId :

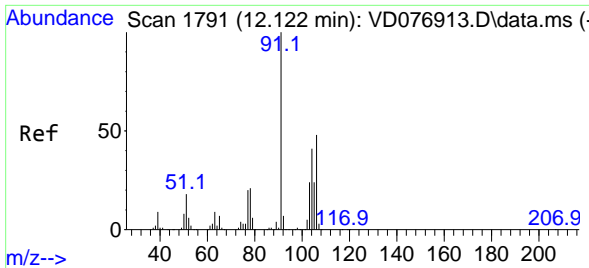
Tgt Ion: 91 Resp: 98376  
 Ion Ratio Lower Upper  
 91 100  
 106 34.4 22.4 41.6



#53  
 m,p-Xylene  
 Concen: 4.603 ug/L  
 RT: 11.793 min Scan# 1735  
 Delta R.T. -0.000 min  
 Lab File: VD076912.D  
 Acq: 03 Aug 2023 10:33

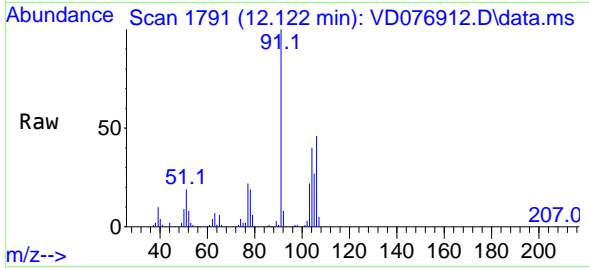
Tgt Ion: 106 Resp: 37677  
 Ion Ratio Lower Upper  
 106 100  
 91 185.2 141.5 262.9



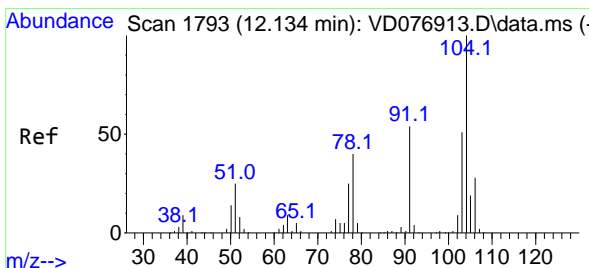
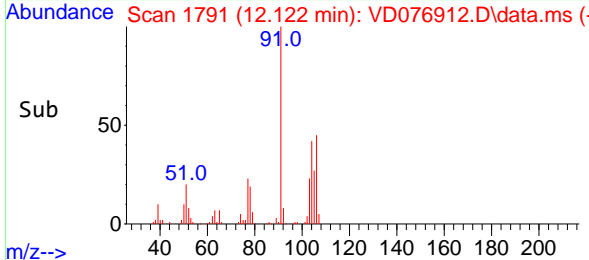
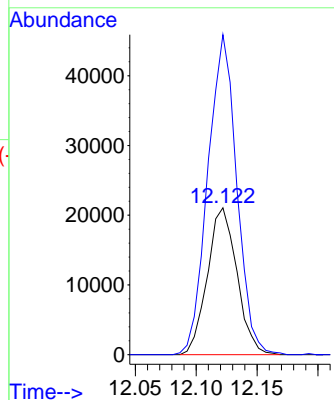


#54  
 o-Xylene  
 Concen: 4.564 ug/L  
 RT: 12.122 min Scan# 1791  
 Delta R.T. -0.000 min  
 Lab File: VD076912.D  
 Acq: 03 Aug 2023 10:33

Instrument :  
 MSVOA\_D  
 ClientSampleId :

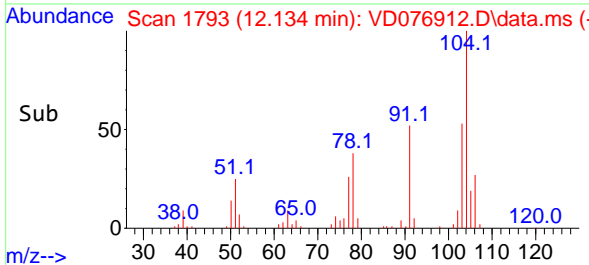
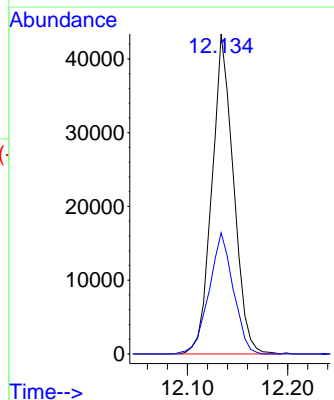
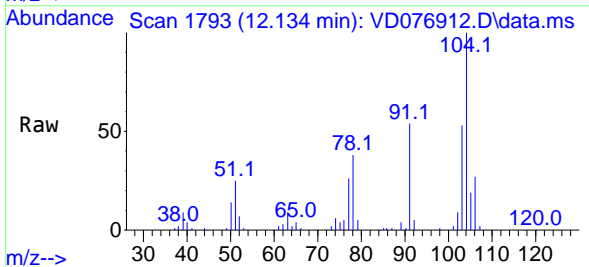


Tgt Ion:106 Resp: 35564  
 Ion Ratio Lower Upper  
 106 100  
 91 217.9 142.2 264.2

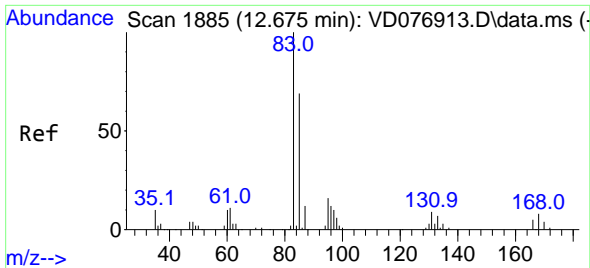


#55  
 Styrene  
 Concen: 4.766 ug/L  
 RT: 12.134 min Scan# 1793  
 Delta R.T. 0.000 min  
 Lab File: VD076912.D  
 Acq: 03 Aug 2023 10:33

Tgt Ion:104 Resp: 64942  
 Ion Ratio Lower Upper  
 104 100  
 78 37.8 31.3 58.1

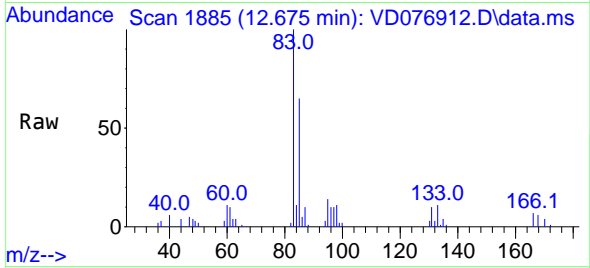




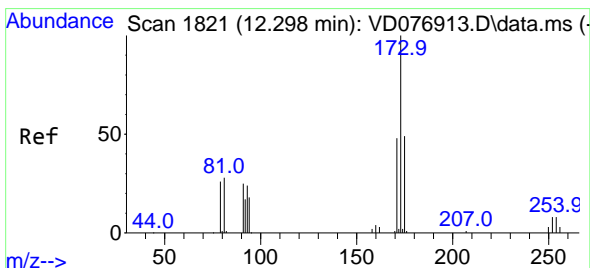
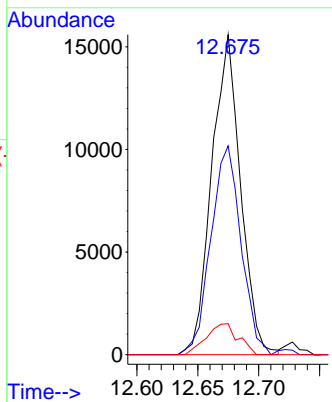
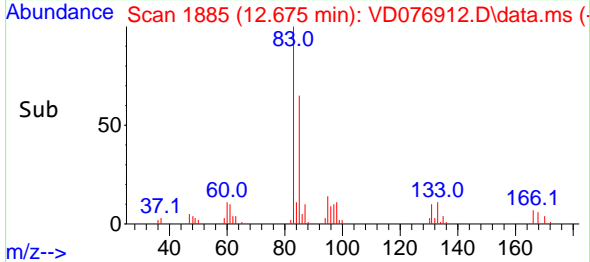


#57  
 1,1,2,2-Tetrachloroethane  
 Concen: 6.265 ug/L  
 RT: 12.675 min Scan# 1885  
 Delta R.T. 0.000 min  
 Lab File: VD076912.D  
 Acq: 03 Aug 2023 10:33

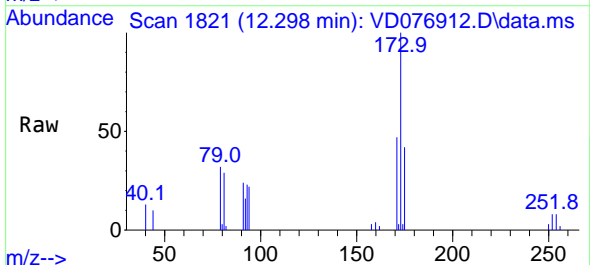
Instrument : MSVOA\_D  
 ClientSampleId :



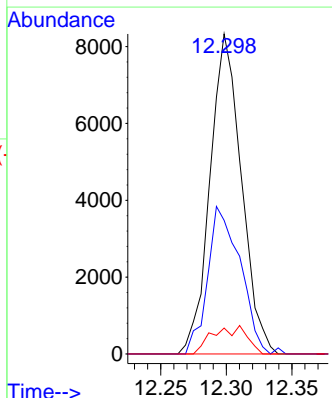
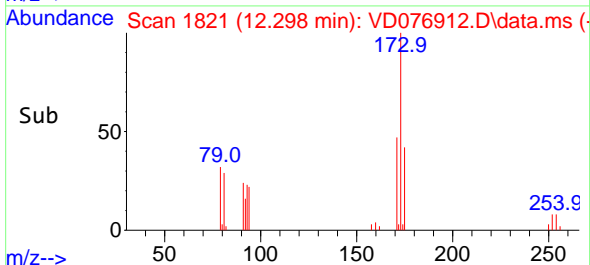
Tgt Ion: 83 Resp: 25634  
 Ion Ratio Lower Upper  
 83 100  
 85 65.2 46.3 86.1  
 131 9.7 7.0 10.4

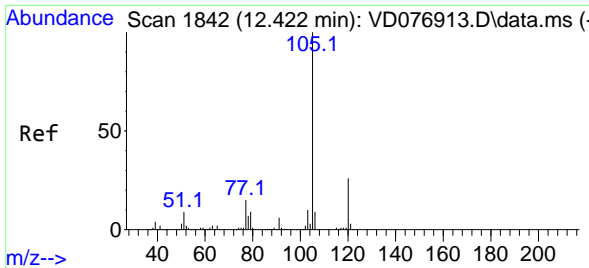


#59  
 Bromoform  
 Concen: 5.654 ug/L  
 RT: 12.298 min Scan# 1821  
 Delta R.T. 0.000 min  
 Lab File: VD076912.D  
 Acq: 03 Aug 2023 10:33



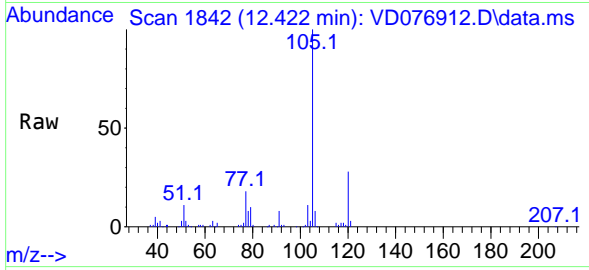
Tgt Ion: 173 Resp: 13873  
 Ion Ratio Lower Upper  
 173 100  
 175 47.7 39.0 58.4  
 254 6.1 5.3 7.9





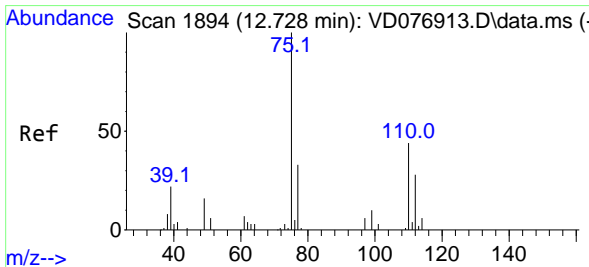
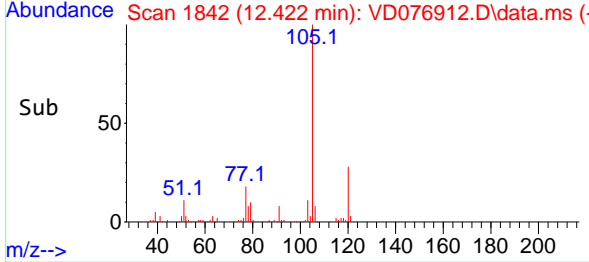
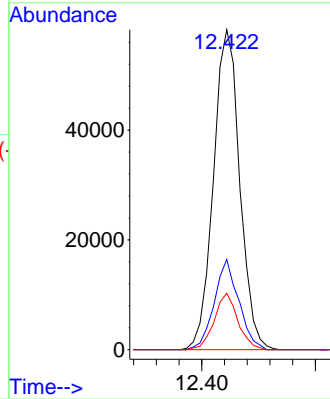
#60  
 Isopropylbenzene  
 Concen: 4.582 ug/L  
 RT: 12.422 min Scan# 1842  
 Delta R.T. -0.000 min  
 Lab File: VD076912.D  
 Acq: 03 Aug 2023 10:33

Instrument : MSVOA\_D  
 ClientSampleId :



Tgt Ion:105 Resp: 93636

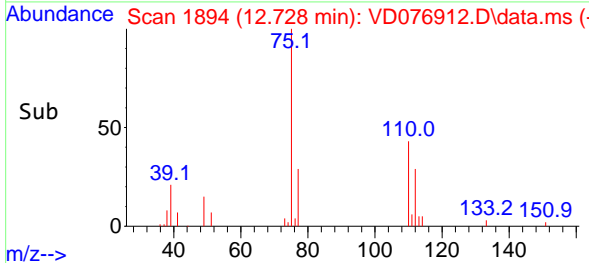
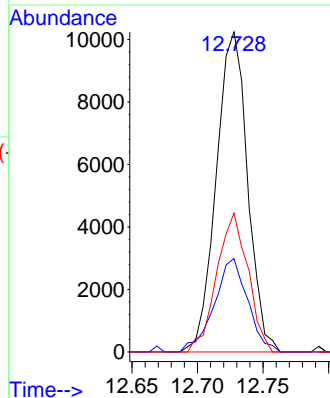
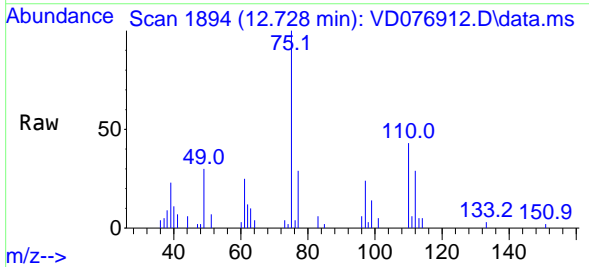
| Ion | Ratio | Lower | Upper |
|-----|-------|-------|-------|
| 105 | 100   |       |       |
| 120 | 26.3  | 21.3  | 31.9  |
| 77  | 15.8  | 12.2  | 18.4  |

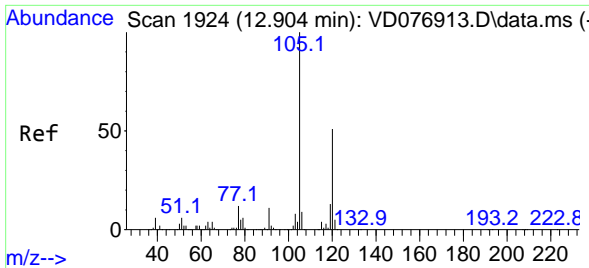


#61  
 1,2,3-Trichloropropane  
 Concen: 6.275 ug/L  
 RT: 12.728 min Scan# 1894  
 Delta R.T. -0.000 min  
 Lab File: VD076912.D  
 Acq: 03 Aug 2023 10:33

Tgt Ion: 75 Resp: 17010

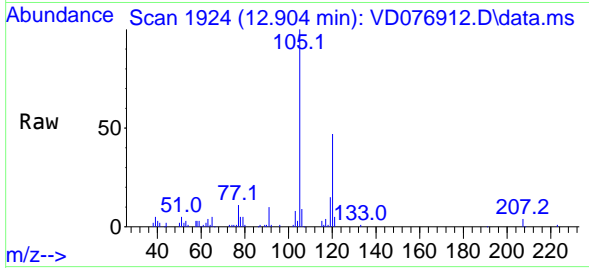
| Ion | Ratio | Lower | Upper |
|-----|-------|-------|-------|
| 75  | 100   |       |       |
| 77  | 31.2  | 27.2  | 40.8  |
| 110 | 43.4  | 31.8  | 47.6  |



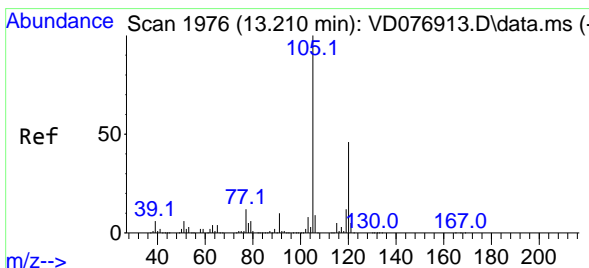
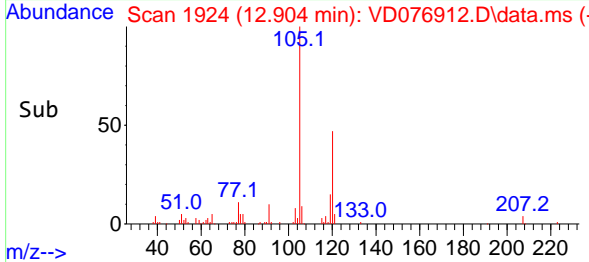
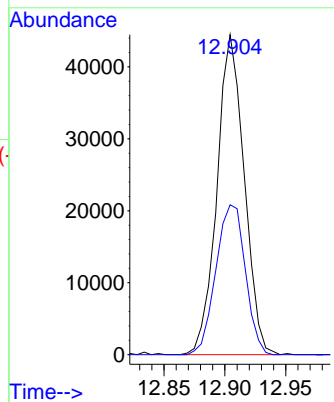


#62  
 1,3,5-Trimethylbenzene  
 Concen: 4.284 ug/L  
 RT: 12.904 min Scan# 1924  
 Delta R.T. 0.000 min  
 Lab File: VD076912.D  
 Acq: 03 Aug 2023 10:33

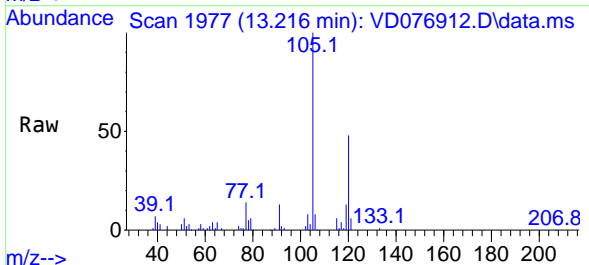
Instrument : MSVOA\_D  
 ClientSampleId :



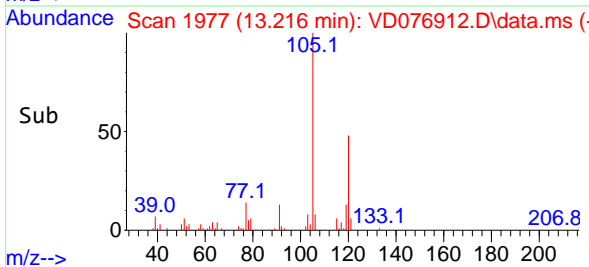
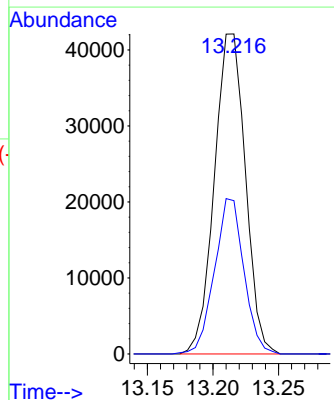
Tgt Ion:105 Resp: 69346  
 Ion Ratio Lower Upper  
 105 100  
 120 50.5 39.8 59.6

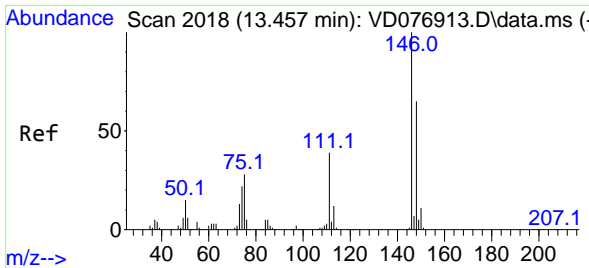


#63  
 1,2,4-Trimethylbenzene  
 Concen: 4.309 ug/L  
 RT: 13.216 min Scan# 1977  
 Delta R.T. 0.006 min  
 Lab File: VD076912.D  
 Acq: 03 Aug 2023 10:33



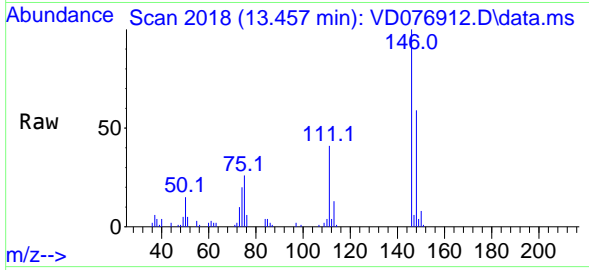
Tgt Ion:105 Resp: 69310  
 Ion Ratio Lower Upper  
 105 100  
 120 46.1 37.5 56.3



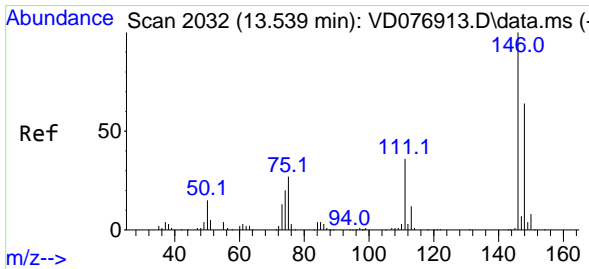
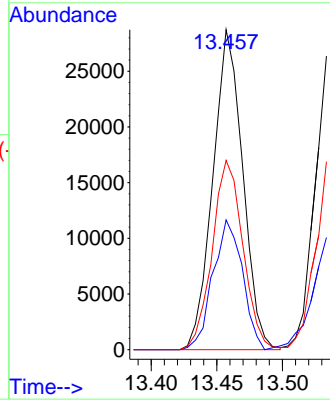
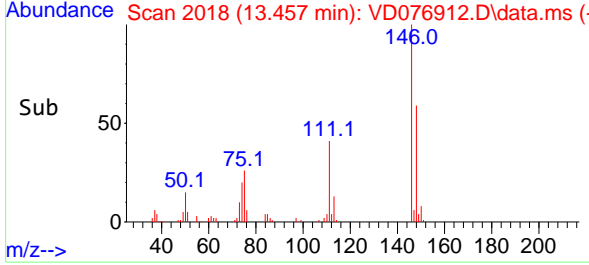


#64  
 1,3-Dichlorobenzene  
 Concen: 5.019 ug/L  
 RT: 13.457 min Scan# 2018  
 Delta R.T. -0.000 min  
 Lab File: VD076912.D  
 Acq: 03 Aug 2023 10:33

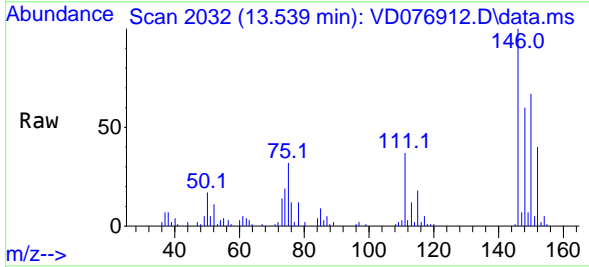
Instrument : MSVOA\_D  
 ClientSampleId :



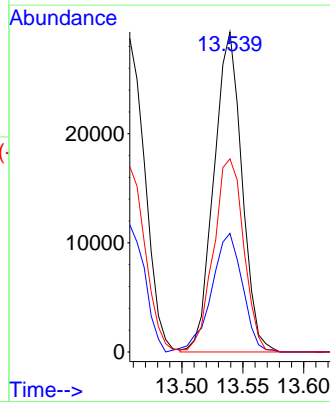
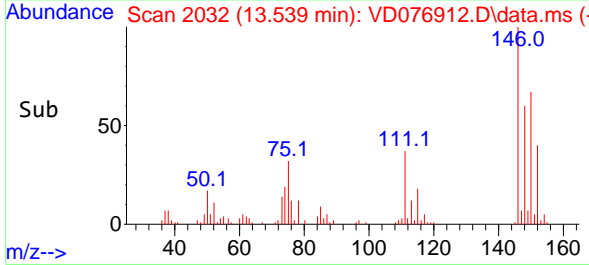
Tgt Ion:146 Resp: 45476  
 Ion Ratio Lower Upper  
 146 100  
 111 40.6 25.6 47.4  
 148 59.1 44.3 82.3

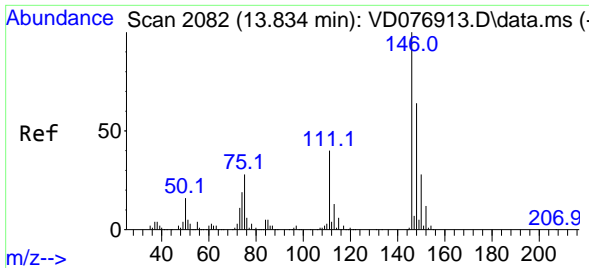


#65  
 1,4-Dichlorobenzene  
 Concen: 5.097 ug/L  
 RT: 13.539 min Scan# 2032  
 Delta R.T. -0.000 min  
 Lab File: VD076912.D  
 Acq: 03 Aug 2023 10:33



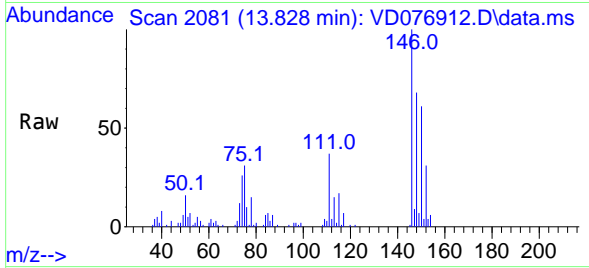
Tgt Ion:146 Resp: 46984  
 Ion Ratio Lower Upper  
 146 100  
 111 37.1 25.7 47.7  
 148 60.4 45.4 84.2



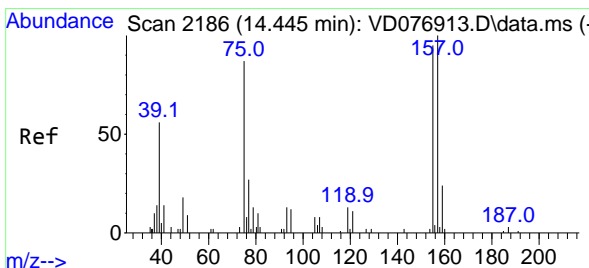
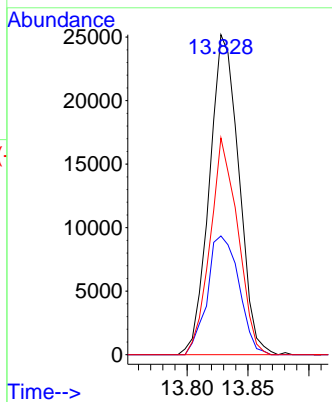
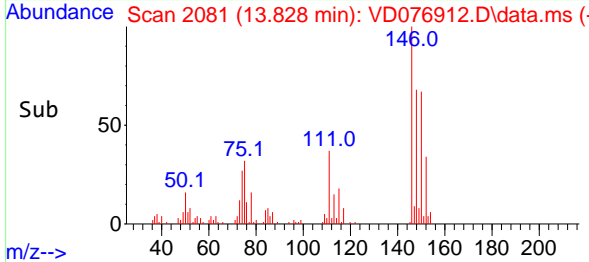


#67  
 1,2-Dichlorobenzene  
 Concen: 5.186 ug/L  
 RT: 13.828 min Scan# 2081  
 Delta R.T. -0.006 min  
 Lab File: VD076912.D  
 Acq: 03 Aug 2023 10:33

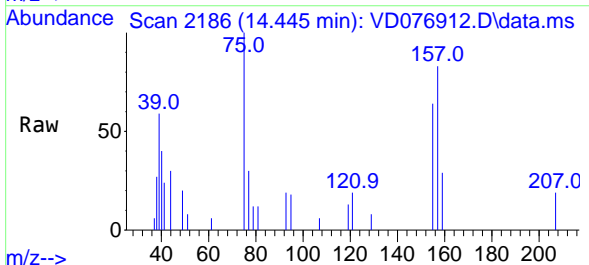
Instrument : MSVOA\_D  
 ClientSampleId :



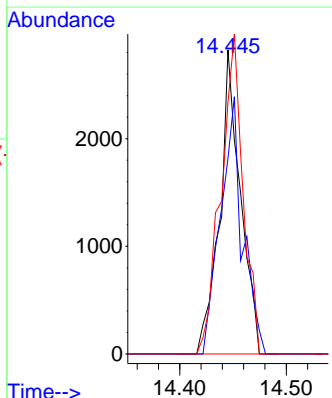
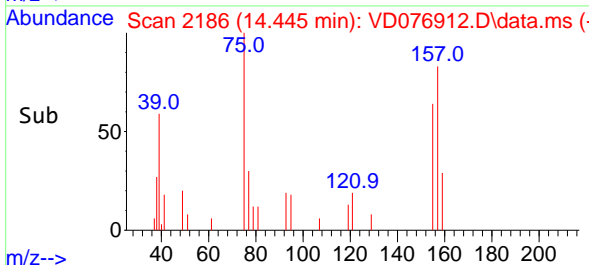
Tgt Ion:146 Resp: 42368  
 Ion Ratio Lower Upper  
 146 100  
 111 37.1 31.3 46.9  
 148 67.7 51.7 77.5

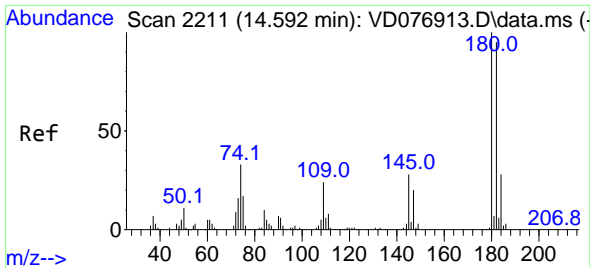


#68  
 1,2-Dibromo-3-chloropropane  
 Concen: 6.407 ug/L  
 RT: 14.445 min Scan# 2186  
 Delta R.T. -0.000 min  
 Lab File: VD076912.D  
 Acq: 03 Aug 2023 10:33



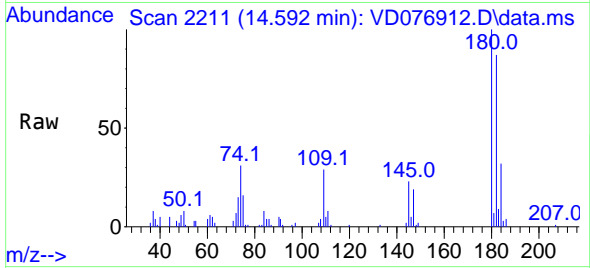
Tgt Ion: 75 Resp: 3828  
 Ion Ratio Lower Upper  
 75 100  
 155 64.2 76.2 114.4#  
 157 82.7 89.4 134.2#



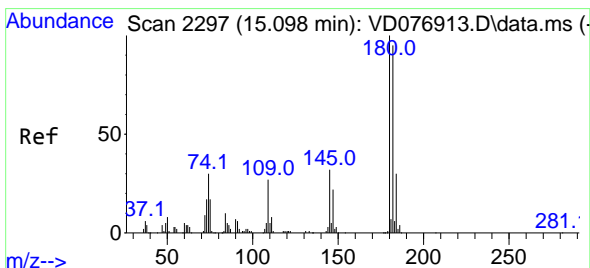
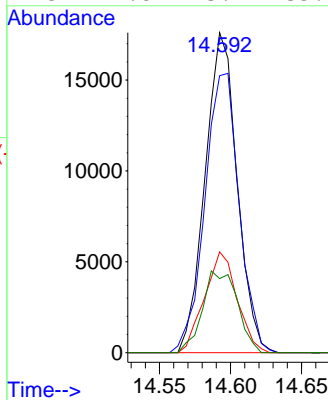
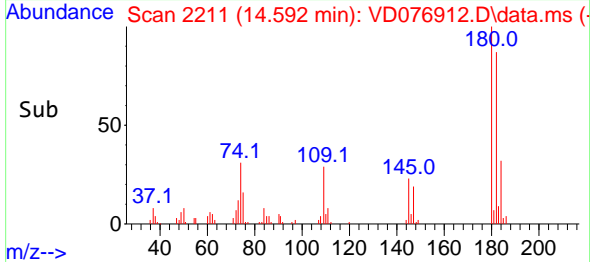


#69  
 1,3,5-Trichlorobenzene  
 Concen: 4.601 ug/L  
 RT: 14.592 min Scan# 211  
 Delta R.T. -0.000 min  
 Lab File: VD076912.D  
 Acq: 03 Aug 2023 10:33

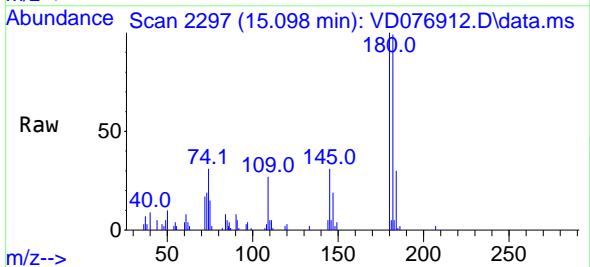
Instrument :  
 MSVOA\_D  
 ClientSampleId :



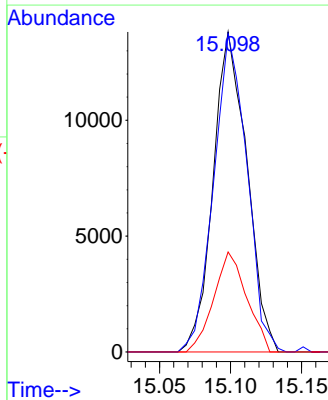
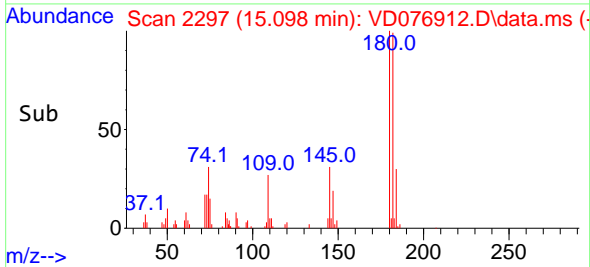
Tgt Ion:180 Resp: 27587  
 Ion Ratio Lower Upper  
 180 100  
 182 93.4 77.1 115.7  
 184 32.0 25.0 37.4  
 145 27.8 23.4 35.0

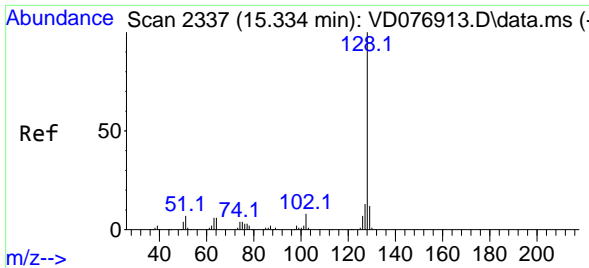


#70  
 1,2,4-trichlorobenzene  
 Concen: 4.288 ug/L  
 RT: 15.098 min Scan# 2297  
 Delta R.T. 0.000 min  
 Lab File: VD076912.D  
 Acq: 03 Aug 2023 10:33



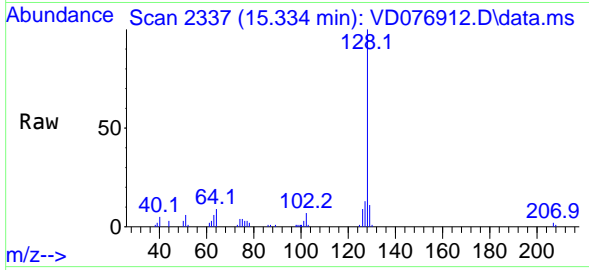
Tgt Ion:180 Resp: 22845  
 Ion Ratio Lower Upper  
 180 100  
 182 97.5 76.9 115.3  
 145 30.5 23.5 35.3



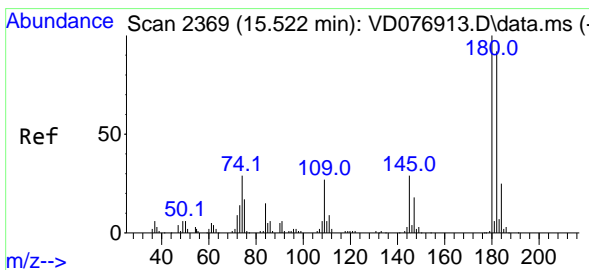
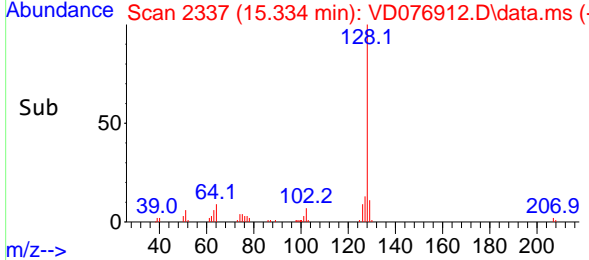
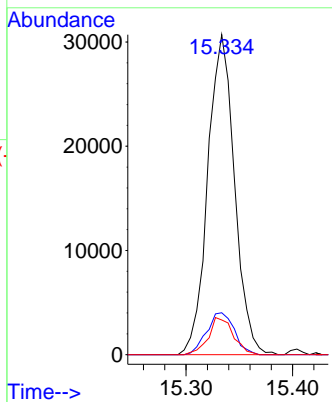


#71  
 Naphthalene  
 Concen: 5.043 ug/L  
 RT: 15.334 min Scan# 21  
 Delta R.T. 0.000 min  
 Lab File: VD076912.D  
 Acq: 03 Aug 2023 10:33

Instrument :  
 MSVOA\_D  
 ClientSampleId :



Tgt Ion:128 Resp: 53590  
 Ion Ratio Lower Upper  
 128 100  
 127 13.6 10.8 16.2  
 129 10.8 8.6 12.8



#72  
 1,2,3-Trichlorobenzene  
 Concen: 4.751 ug/L  
 RT: 15.528 min Scan# 2370  
 Delta R.T. 0.006 min  
 Lab File: VD076912.D  
 Acq: 03 Aug 2023 10:33

Tgt Ion:180 Resp: 22243  
 Ion Ratio Lower Upper  
 180 100  
 182 97.2 74.3 111.5  
 145 31.0 25.0 37.6

