

Data Path : Z:\VOASRV\HPCHEM1\MSVOA D\DATA\VD080519\  
 Data File : VD063380.D  
 Acq On : 5 Aug 2019 15:00  
 Operator : VA/AP  
 Sample : K4090-01  
 Misc : 6.07µ/5ml/MSVOA D/SOIL  
 ALS Vial : 7 Sample Multiplier: 1

Instrument :  
 MSVOA\_D  
 ClientSampleID :  
 OR-02-080219-A

Quant Time: Aug 06 08:08:40 2019  
 Quant Method : Z:\VOASRV\HPCHEM1\MSVOA\_D\METHOD\82D072919S.M  
 Quant Title : SW846 8260  
 QLast Update : Tue Jul 30 03:04:50 2019  
 Response via : Initial Calibration

Internal Standards	R.T.	QIon	Response	Conc	Units	Dev(Min)
1) Pentafluorobenzene	7.05	168	977868	50.00	µg/l	0.00
34) 1,4-Difluorobenzene	8.22	114	1406568	50.00	µg/l	0.00
63) Chlorobenzene-d5	12.36	117	1184216	50.00	µg/l	0.00
72) 1,4-Dichlorobenzene-d4	14.52	152	614498	50.00	µg/l	0.00
System Monitoring Compounds						
33) 1,2-Dichloroethane-d4	7.45	65	502414	46.30	µg/l	0.00
Spiked Amount	50.000		Recovery	=	92.60%	
35) Dibromofluoromethane	6.92	113	606229	50.48	µg/l	0.00
Spiked Amount	50.000		Recovery	=	100.96%	
50) Toluene-d8	10.41	98	1370207	50.98	µg/l	0.00
Spiked Amount	50.000		Recovery	=	101.96%	
62) 4-Bromofluorobenzene	13.55	95	567028	46.30	µg/l	0.00
Spiked Amount	50.000		Recovery	=	92.60%	

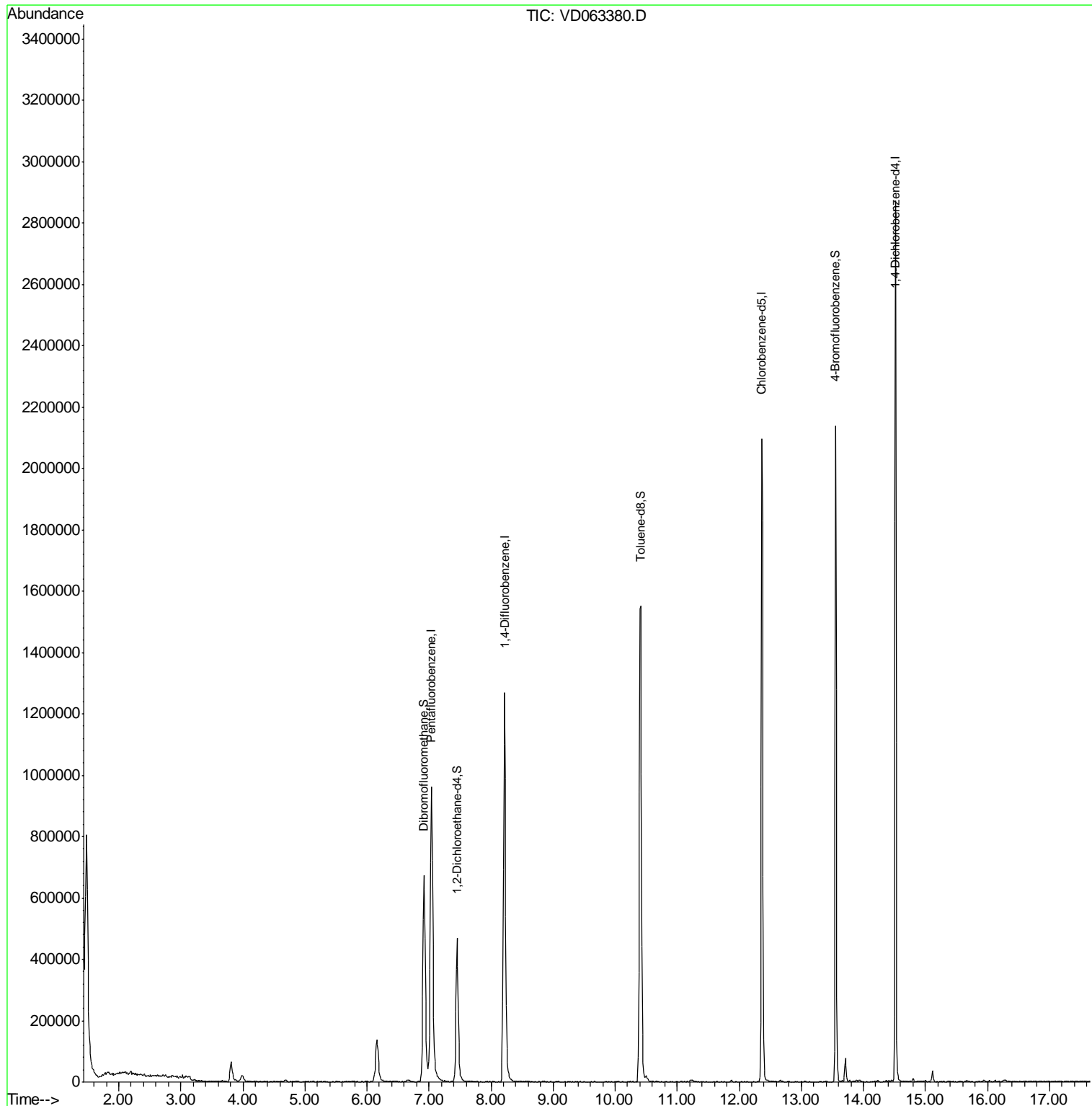
Target Compounds Qvalue  
 -----

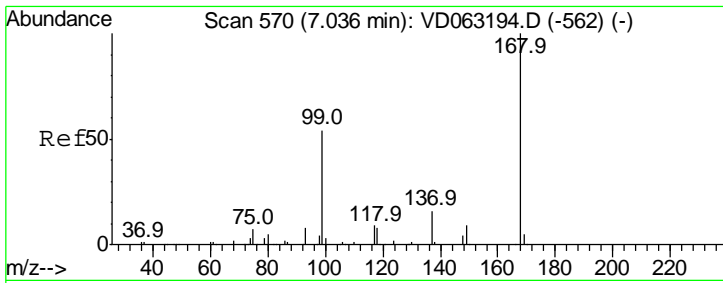
(#) = qualifier out of range (m) = manual integration (+) = signals summed

Data Path : Z:\VOASRV\HPCHEM1\MSVOA D\DATA\VD080519\  
 Data File : VD063380.D  
 Acq On : 5 Aug 2019 15:00  
 Operator : VA/AP  
 Sample : K4090-01  
 Misc : 6.07µ/5ml/MSVOA D/SOIL  
 ALS Vial : 7 Sample Multiplier: 1

Instrument :  
 MSVOA\_D  
 ClientSampleID :  
 OR-02-080219-A

Quant Time: Aug 06 08:08:40 2019  
 Quant Method : Z:\VOASRV\HPCHEM1\MSVOA\_D\METHOD\82D072919S.M  
 Quant Title : SW846 8260  
 QLast Update : Tue Jul 30 03:04:50 2019  
 Response via : Initial Calibration

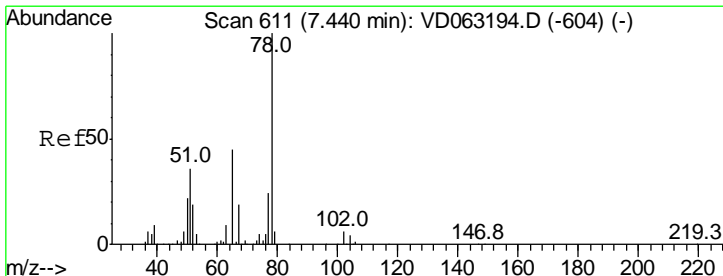
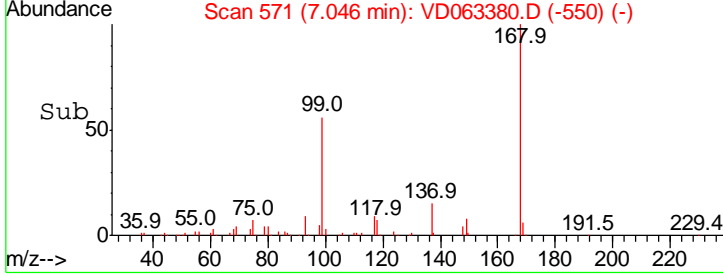
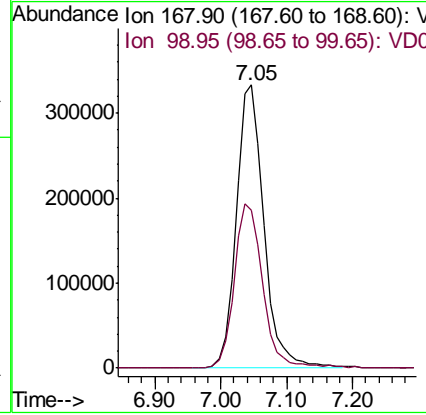
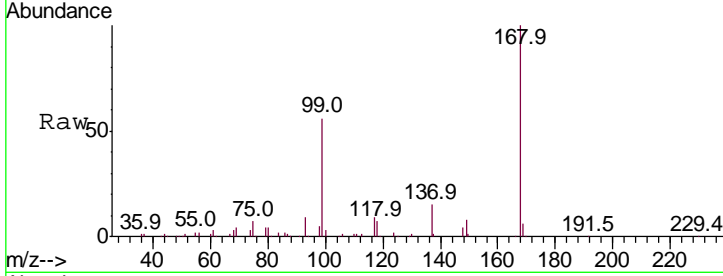




#1  
 Pentafluorobenzene  
 Concen: 50.000 ug/l  
 RT: 7.05 min Scan# 571  
 Delta R.T. 0.01 min  
 Lab File: VD063380.D  
 Acq: 5 Aug 2019 15:00

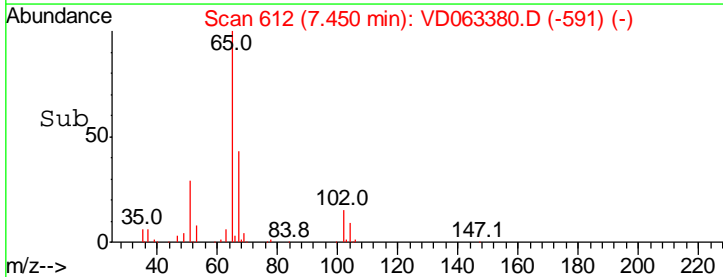
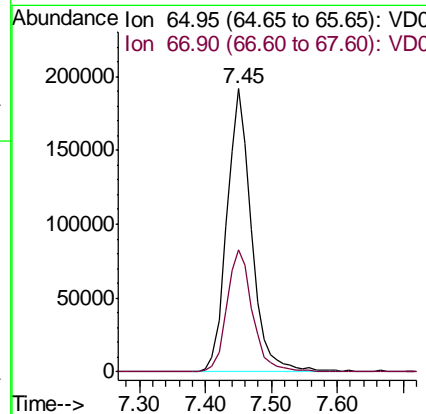
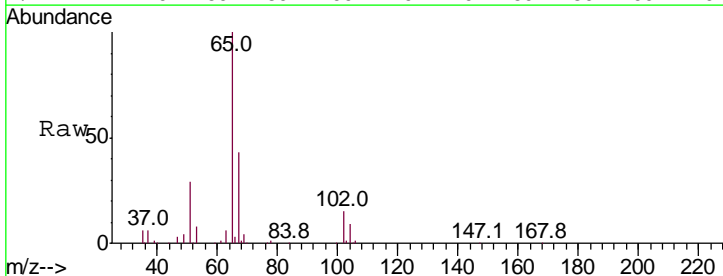
Instrument :  
 MSVOA\_D  
 ClientSampled :  
 OR-02-080219-A

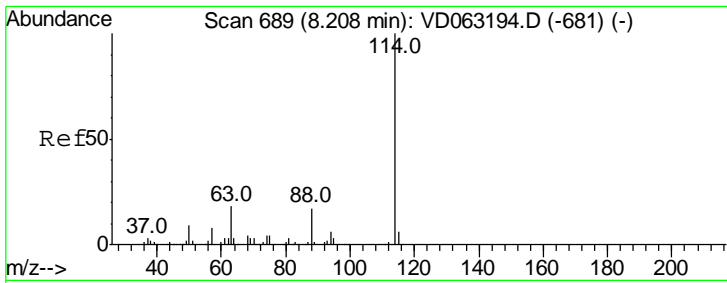
Tgt Ion	Resp	Lower	Upper
168	100		
99	55.8	43.7	65.5



#33  
 1,2-Dichloroethane-d4  
 Concen: 46.304 ug/l  
 RT: 7.45 min Scan# 612  
 Delta R.T. 0.01 min  
 Lab File: VD063380.D  
 Acq: 5 Aug 2019 15:00

Tgt Ion	Resp	Lower	Upper
65	100		
67	43.0	0.0	85.8

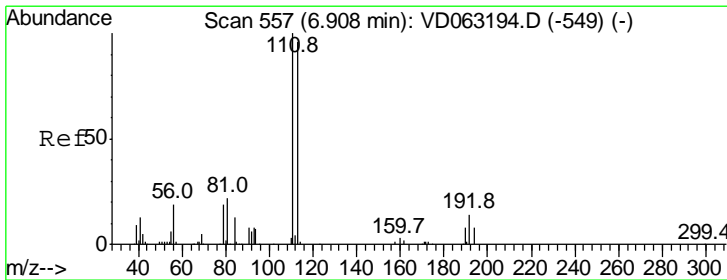
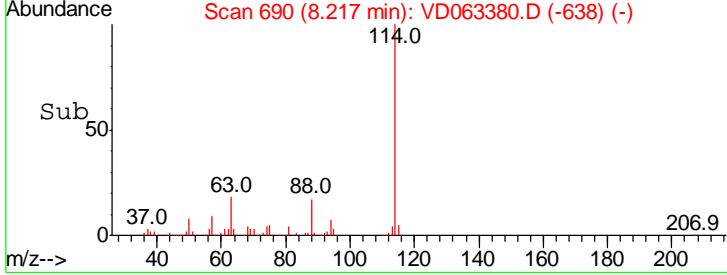
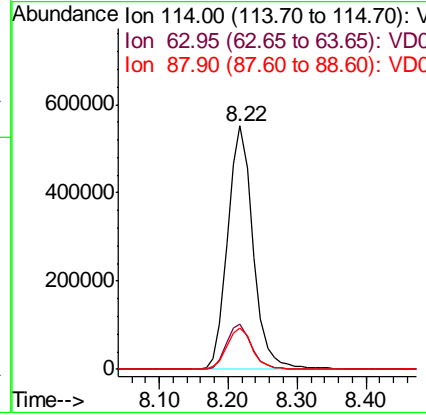
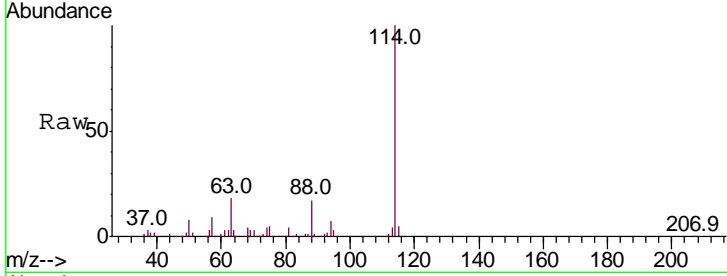




#34  
 1,4-Difluorobenzene  
 Concen: 50.000 ug/l  
 RT: 8.22 min Scan# 690  
 Delta R.T. 0.01 min  
 Lab File: VD063380.D  
 Acq: 5 Aug 2019 15:00

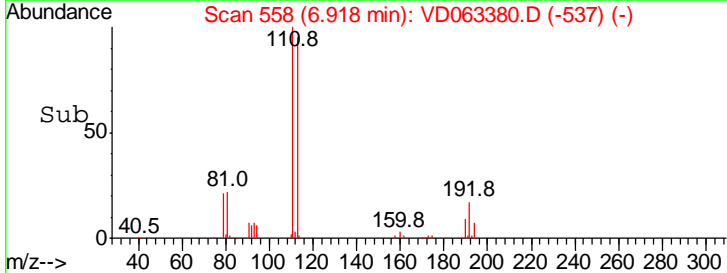
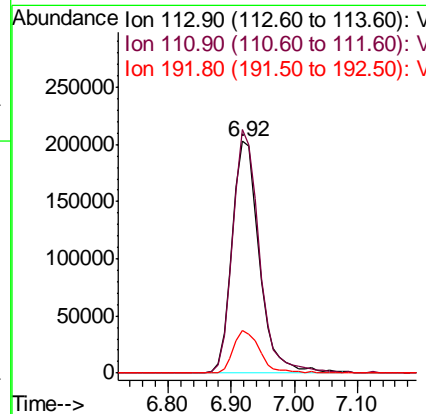
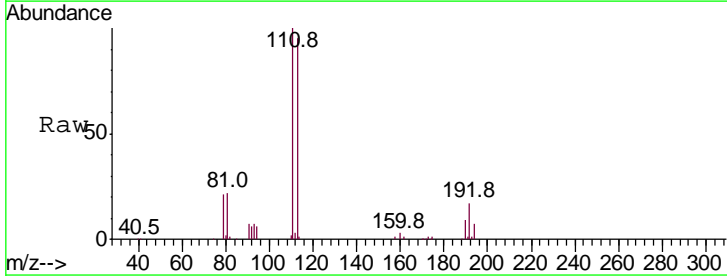
Instrument :  
 MSVOA\_D  
 ClientSampleId :  
 OR-02-080219-A

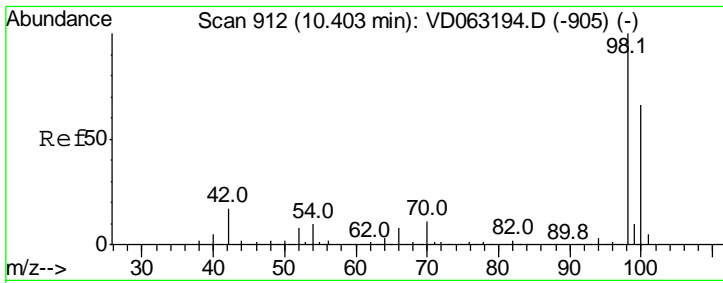
Tgt Ion	Resp	Lower	Upper
114	100		
63	18.4	0.0	35.2
88	17.2	0.0	34.6



#35  
 Dibromofluoromethane  
 Concen: 50.481 ug/l  
 RT: 6.92 min Scan# 558  
 Delta R.T. 0.01 min  
 Lab File: VD063380.D  
 Acq: 5 Aug 2019 15:00

Tgt Ion	Resp	Lower	Upper
113	100		
111	105.1	83.2	124.8
192	18.2	11.8	17.8#

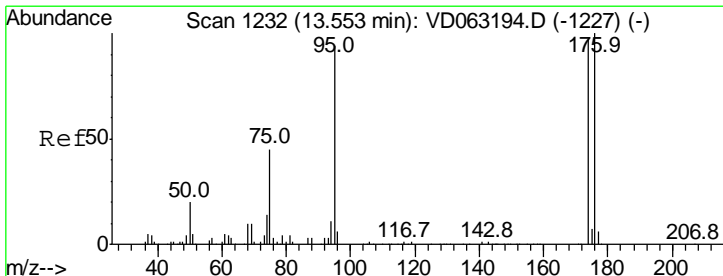
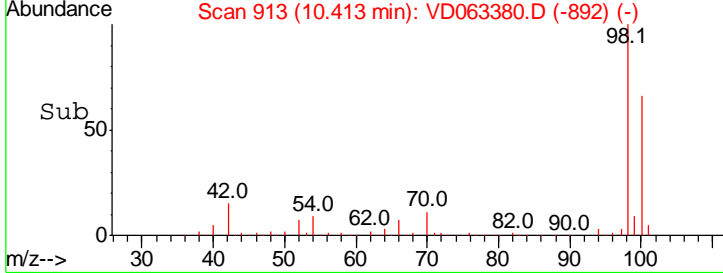
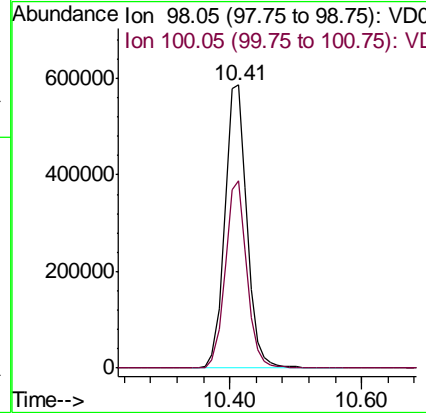
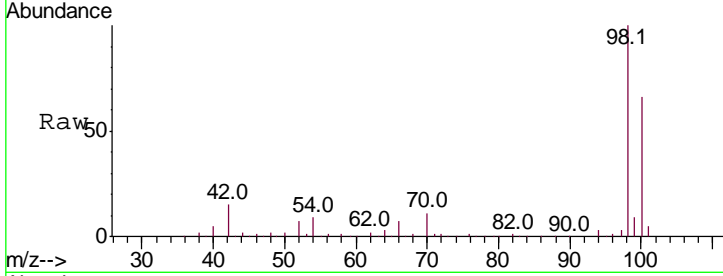




#50  
 Toluene-d8  
 Concen: 50.982 ug/l  
 RT: 10.41 min Scan# 913  
 Delta R.T. 0.01 min  
 Lab File: VD063380.D  
 Acq: 5 Aug 2019 15:00

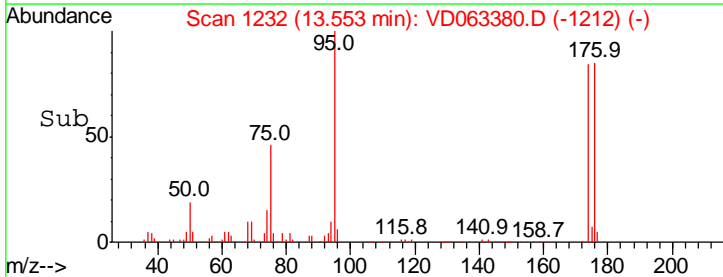
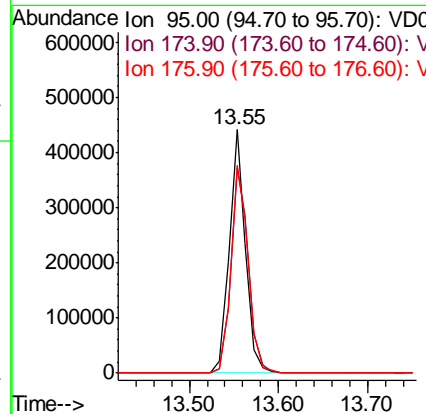
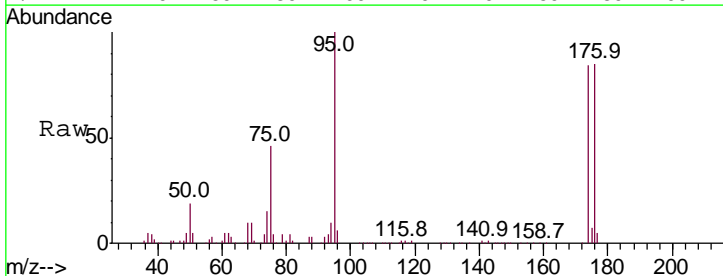
Instrument :  
 MSVOA\_D  
 ClientSampled :  
 OR-02-080219-A

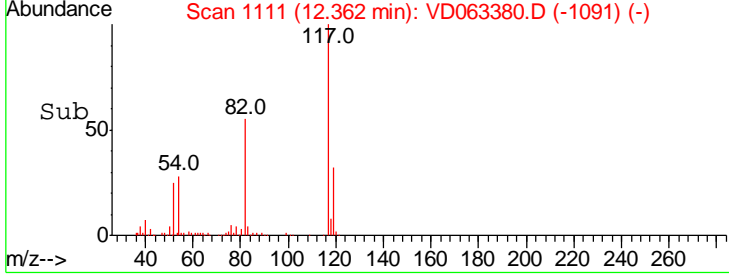
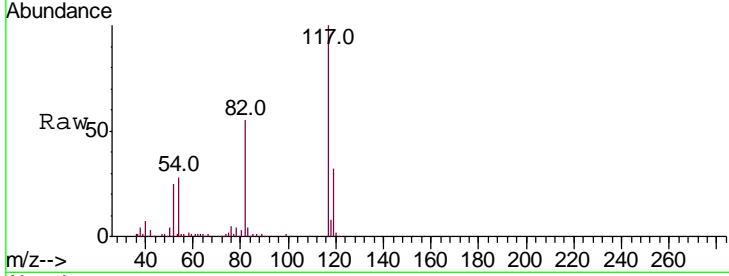
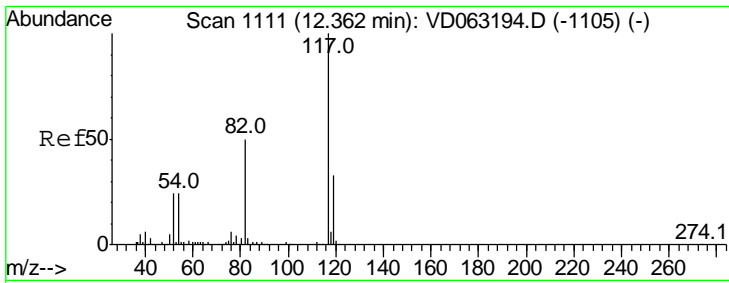
Tgt Ion: 98 Resp: 1370207  
 Ion Ratio Lower Upper  
 98 100  
 100 66.0 53.2 79.8



#62  
 4-Bromofluorobenzene  
 Concen: 46.298 ug/l  
 RT: 13.55 min Scan# 1232  
 Delta R.T. -0.00 min  
 Lab File: VD063380.D  
 Acq: 5 Aug 2019 15:00

Tgt Ion: 95 Resp: 567028  
 Ion Ratio Lower Upper  
 95 100  
 174 84.2 0.0 205.4  
 176 85.3 0.0 211.8

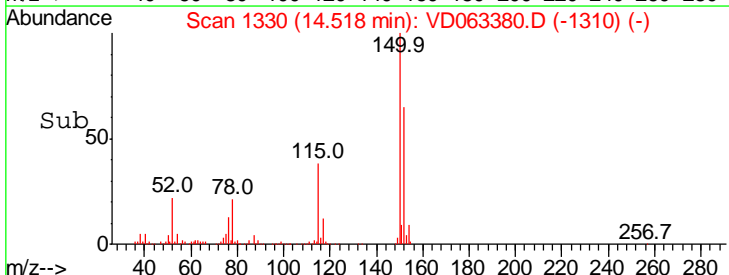
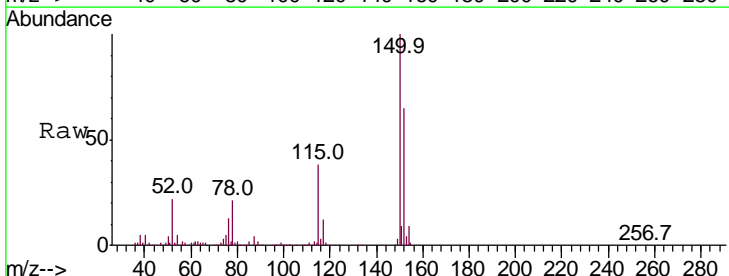
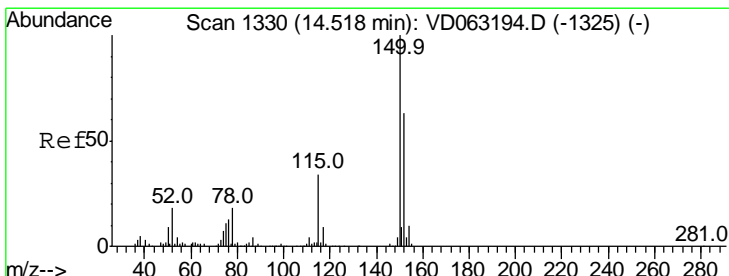
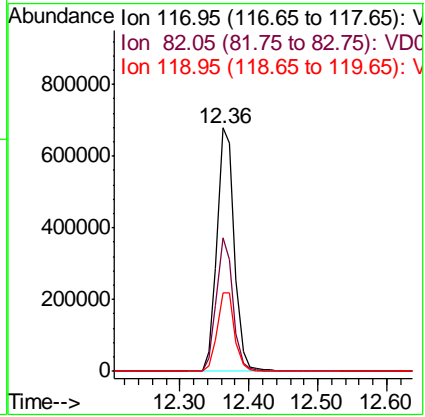




#63  
 Chlorobenzene-d5  
 Concen: 50.000 ug/l  
 RT: 12.36 min Scan# 1111  
 Delta R.T. -0.00 min  
 Lab File: VD063380.D  
 Acq: 5 Aug 2019 15:00

Instrument : MSVOA\_D  
 ClientSampled : OR-02-080219-A

Tgt Ion	Resp	Lower	Upper
117	100		
82	54.6	40.1	60.1
119	32.1	26.5	39.7



#72  
 1,4-Dichlorobenzene-d4  
 Concen: 50.000 ug/l  
 RT: 14.52 min Scan# 1330  
 Delta R.T. 0.00 min  
 Lab File: VD063380.D  
 Acq: 5 Aug 2019 15:00

Tgt Ion	Resp	Lower	Upper
152	100		
115	58.9	27.5	82.4
150	153.1	0.0	320.6

