

Data Path : Z:\VOASRV\HPCHEM1\MSVOA D\DATA\VD080619\  
 Data File : VD063409.D  
 Acq On : 6 Aug 2019 19:55  
 Operator : JC/SY  
 Sample : K4192-04  
 Misc : 4.92g/5ml/MSVOA D/SOIL  
 ALS Vial : 18 Sample Multiplier: 1

Instrument :  
 MSVOA\_D  
 ClientSampleId :  
 TRIPLE-BARREL-BC-EAST

Integration Parameters: RTEINT.P

Integrator: RTE  
 Smoothing : ON Filtering: 5  
 Sampling : 1 Min Area: 3 % of largest Peak  
 Start Thrs: 0.2 Max Peaks: 100  
 Stop Thrs : 0 Peak Location: TOP

If leading or trailing edge < 100 prefer < Baseline drop else tangent >  
 Peak separation: 5

Method : Z:\VOASRV\HPCHEM1\MSVOA\_D\METHOD\82D072919S.M  
 Title : SW846 8260

Signal : TIC

peak #	R.T. min	first scan	max scan	last scan	PK TY	peak height	corr. area	corr. % max.	% of total
1	1.483	3	6	18	rVB	891676	2416050	87.60%	12.923%
2	3.816	238	243	249	rBV	42185	108947	3.95%	0.583%
3	6.474	503	513	521	rBV4	13855	46388	1.68%	0.248%
4	6.927	552	559	566	rBV	547889	1573042	57.03%	8.414%
5	7.045	566	571	591	rVB	938791	2704531	98.06%	14.466%
6	7.459	607	613	624	rBV	424166	1076856	39.04%	5.760%
7	8.226	684	691	704	rBV	1096351	2758103	100.00%	14.752%
8	10.412	908	913	927	rBV	1064819	2394048	86.80%	12.805%
9	11.239	992	997	1004	rBV	12157	32898	1.19%	0.176%
10	12.371	1108	1112	1122	rBV	1468215	2387028	86.55%	12.767%
11	13.562	1229	1233	1239	rBV	1039926	1501159	54.43%	8.029%
12	13.710	1246	1248	1252	rVB	25494	40780	1.48%	0.218%
13	14.517	1327	1330	1340	rVB	1193262	1656475	60.06%	8.860%

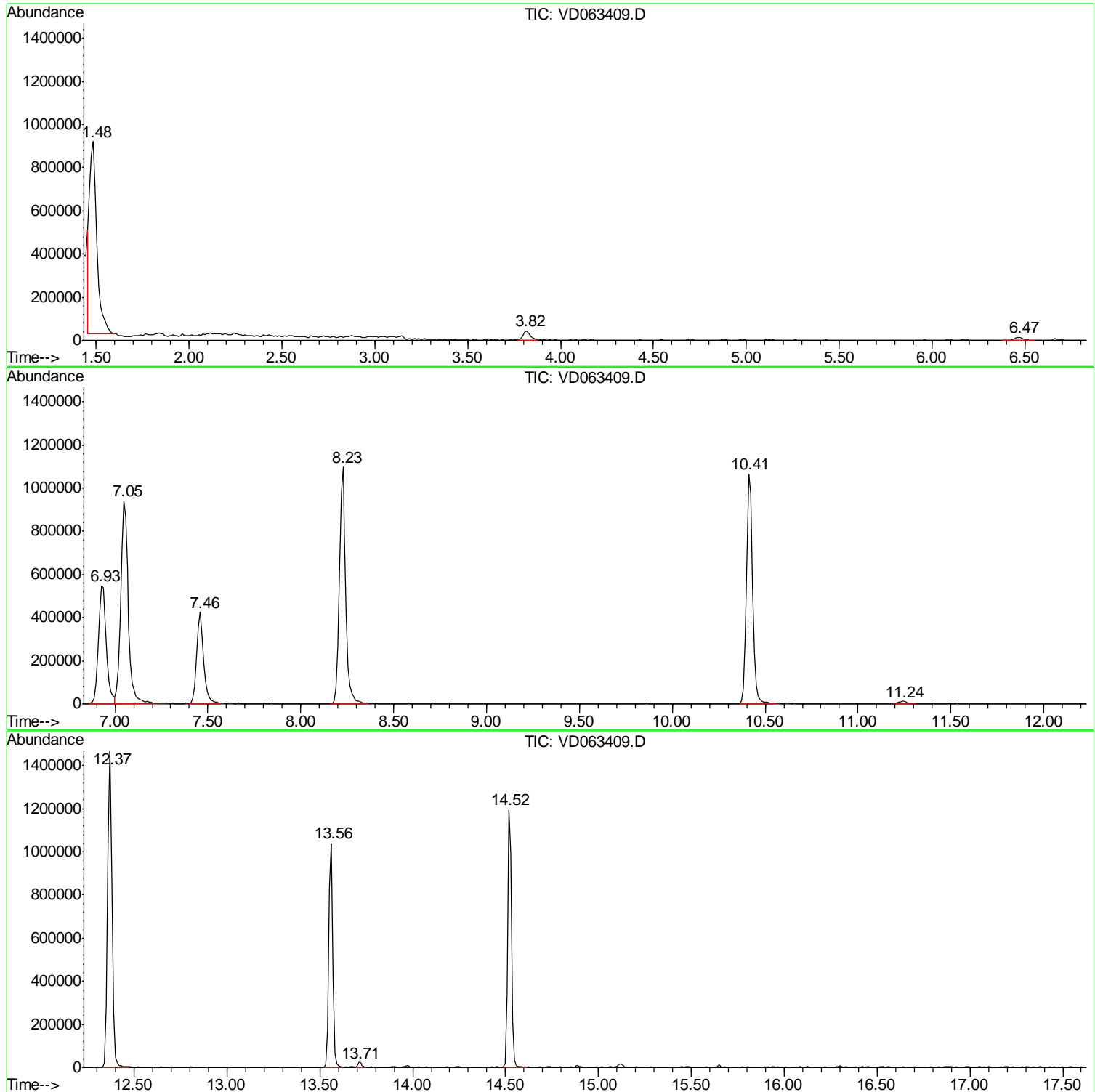
Sum of corrected areas: 18696305

Data Path : Z:\VOASRV\HPCHEM1\MSVOA D\DATA\VD080619\  
Data File : VD063409.D  
Acq On : 6 Aug 2019 19:55  
Operator : JC/SY  
Sample : K4192-04  
Misc : 4.92α/5ml/MSVOA D/SOIL  
ALS Vial : 18 Sample Multiplier: 1

Instrument :  
MSVOA\_D  
ClientSampleId :  
TRIPLE-BARREL-BC-EAST

Quant Method : Z:\VOASRV\HPCHEM1\MSVOA\_D\METHOD\82D072919S.M  
Quant Title : SW846 8260

TIC Library : C:\DATABASE\NIST11.L  
TIC Integration Parameters: LSCINT.P



Data Path : Z:\VOASRV\HPCHEM1\MSVOA\_D\DATA\VD080619\  
Data File : VD063409.D  
Acq On : 6 Aug 2019 19:55  
Operator : JC/SY  
Sample : K4192-04  
Misc : 4.92g/5ml/MSVOA\_D/SOIL  
ALS Vial : 18 Sample Multiplier: 1

**Instrument :**  
MSVOA\_D  
**ClientSampleId :**  
TRIPLE-BARREL-BC-EAST

Quant Method : Z:\VOASRV\HPCHEM1\MSVOA\_D\METHOD\82D072919S.M  
Quant Title : SW846 8260

TIC Library : C:\DATABASE\NIST11.L  
TIC Integration Parameters: LSCINT.P

No Library Search Compounds Detected

\*\*\*\*\*

Data Path : Z:\VOASRV\HPCHEM1\MSVOA\_D\DATA\VD080619\  
Data File : VD063409.D  
Acq On : 6 Aug 2019 19:55  
Operator : JC/SY  
Sample : K4192-04  
Misc : 4.92g/5ml/MSVOA\_D/SOIL  
ALS Vial : 18 Sample Multiplier: 1

Instrument :  
MSVOA\_D  
ClientSampleId :  
TRIPLE-BARREL-BC-EAST

Quant Method : Z:\VOASRV\HPCHEM1\MSVOA\_D\METHOD\82D072919S.M  
Quant Title : SW846 8260

TIC Library : C:\DATABASE\NIST11.L  
TIC Integration Parameters: LSCINT.P

TIC Top Hit name	RT	EstConc	Units	Response	--Internal Standard--			
					#	RT	Resp	Conc

---