

Data Path : Z:\voasrv\HPCHEM1\MSVOA_D\Data\VD080921\
 Data File : VD070004.D
 Acq On : 09 Aug 2021 18:52
 Operator : VA/SY
 Sample : M3315-01
 Misc : 5.01G/5.00ml/MSVOA_D/SOIL
 ALS Vial : 12 Sample Multiplier: 1

Instrument :
 MSVOA_D
 ClientSampled :

Quant Time: Aug 10 07:05:31 2021
 Quant Method : Z:\voasrv\HPCHEM1\MSVOA_D\Method\82D072221S.M
 Quant Title : SW846 8260
 QLast Update : Fri Jul 23 04:51:13 2021
 Response via : Initial Calibration

Compound	R.T.	QIon	Response	Conc	Units	Dev(Min)

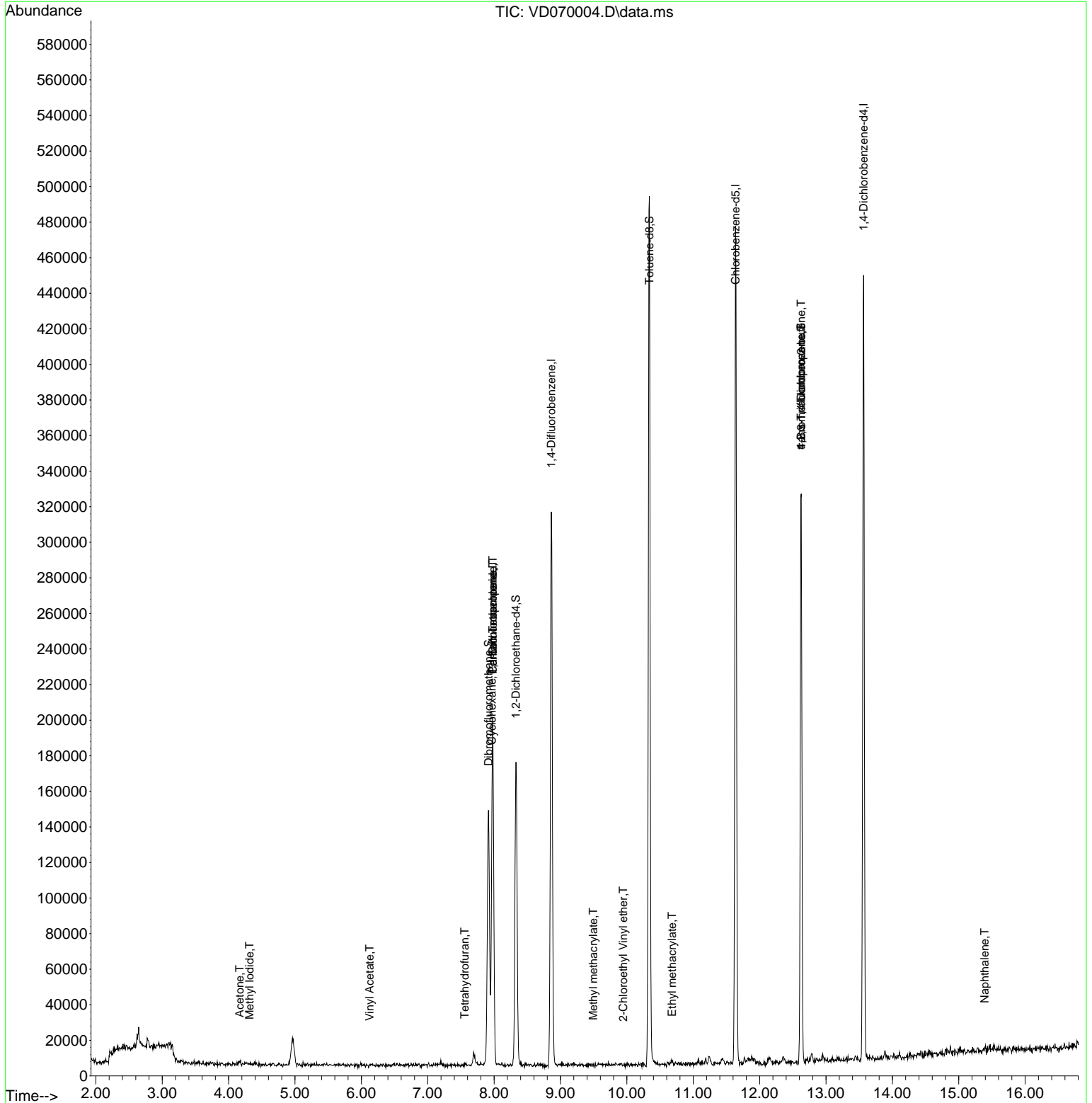
Internal Standards						
1) Pentafluorobenzene	7.979	168	136513	50.000	ug/l	0.00
34) 1,4-Difluorobenzene	8.861	114	267299	50.000	ug/l	0.00
63) Chlorobenzene-d5	11.638	117	279311	50.000	ug/l	0.00
72) 1,4-Dichlorobenzene-d4	13.567	152	118388	50.000	ug/l	0.00
System Monitoring Compounds						
33) 1,2-Dichloroethane-d4	8.326	65	135050	86.018	ug/l	0.00
Spiked Amount	50.000	Range	50 - 163	Recovery	=	172.040%#
35) Dibromofluoromethane	7.914	113	105344	62.517	ug/l	0.00
Spiked Amount	50.000	Range	54 - 147	Recovery	=	125.040%
50) Toluene-d8	10.338	98	344922	53.086	ug/l	0.00
Spiked Amount	50.000	Range	49 - 140	Recovery	=	106.180%
62) 4-Bromofluorobenzene	12.626	95	117453	54.089	ug/l	0.00
Spiked Amount	50.000	Range	25 - 144	Recovery	=	108.180%
Target Compounds						
					Qvalue	
5) Bromomethane	2.768	94	2082	Below Cal	#	75
10) Methyl Iodide	4.315	142	941	3.979	ug/l #	48
16) Acetone	4.167	43	2974	10.486	ug/l	92
20) Methylene Chloride	4.973	84	12759	Below Cal	#	82
23) Vinyl Acetate	6.126	43	82	20.377	ug/l #	71
29) Tetrahydrofuran	7.556	42	299	1.202	ug/l #	32
31) Cyclohexane	7.967	56	3370	1.099	ug/l #	52
36) 1,1-Dichloropropene	7.979	75	12703	4.404	ug/l #	49
38) Carbon Tetrachloride	7.979	117	14434	5.478	ug/l #	18
48) Methyl methacrylate	9.491	41	63	2.806	ug/l #	13
56) Ethyl methacrylate	10.679	69	285	4.035	ug/l #	1
58) 2-Chloroethyl Vinyl ether	9.944	63	64	20.941	ug/l #	48
76) 1,2,3-Trichloropropane	12.626	75	56401	44.820	ug/l #	1
81) trans-1,4-Dichloro-2-b...	12.626	75	56401	135.973	ug/l #	16
95) Naphthalene	15.390	128	461	5.106	ug/l #	69

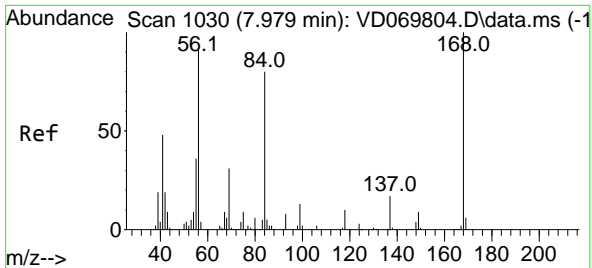
(#) = qualifier out of range (m) = manual integration (+) = signals summed

Data Path : Z:\voasrv\HPCHEM1\MSVOA_D\Data\VD080921\
 Data File : VD070004.D
 Acq On : 09 Aug 2021 18:52
 Operator : VA/SY
 Sample : M3315-01
 Misc : 5.01G/5.00ml/MSVOA_D/SOIL
 ALS Vial : 12 Sample Multiplier: 1

Instrument :
 MSVOA_D
 ClientSampled :

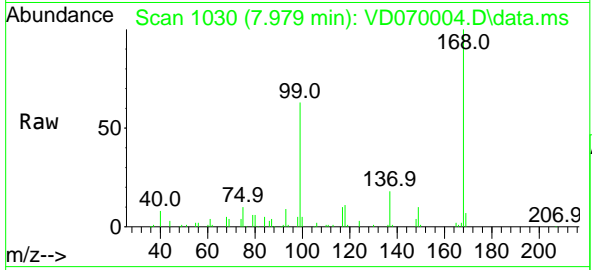
Quant Time: Aug 10 07:05:31 2021
 Quant Method : Z:\voasrv\HPCHEM1\MSVOA_D\Method\82D072221S.M
 Quant Title : SW846 8260
 QLast Update : Fri Jul 23 04:51:13 2021
 Response via : Initial Calibration



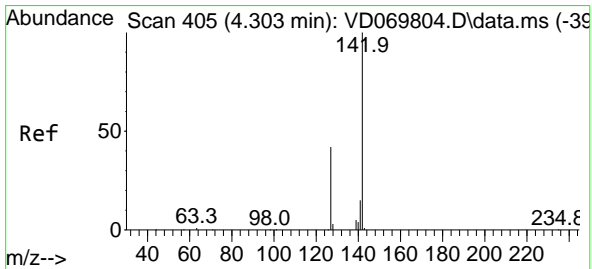
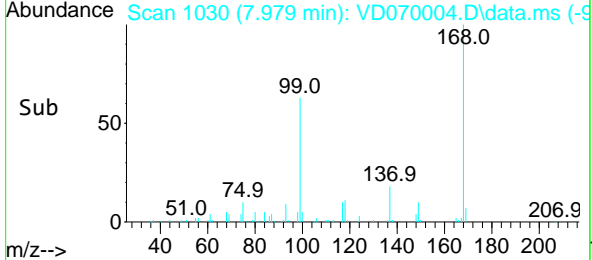
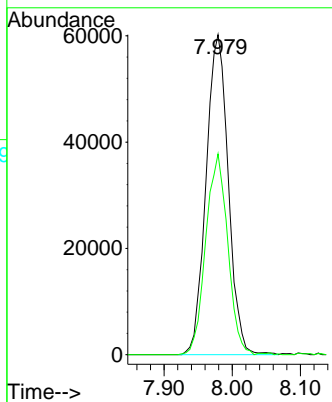


#1
 Pentafluorobenzene
 Concen: 50.000 ug/l
 RT: 7.979 min Scan# 1030
 Delta R.T. 0.000 min
 Lab File: VD070004.D
 Acq: 09 Aug 2021 18:52

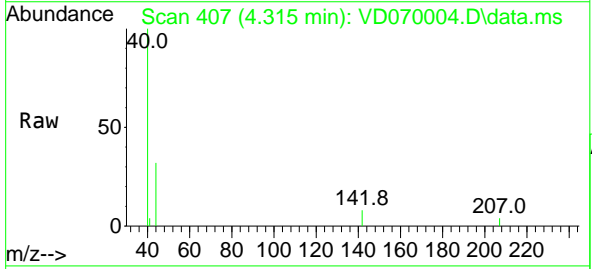
Instrument :
 MSVOA_D
 ClientSampled :



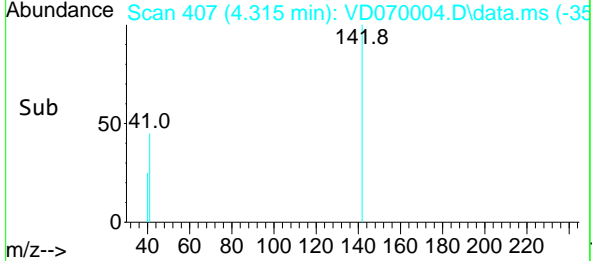
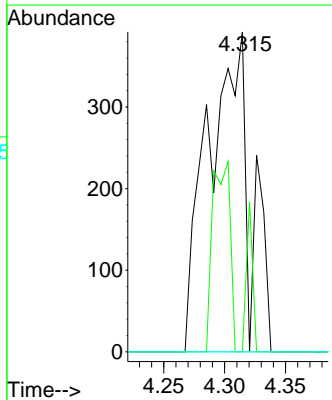
Tgt Ion:168 Resp: 136513
 Ion Ratio Lower Upper
 168 100
 99 62.7 51.1 76.7

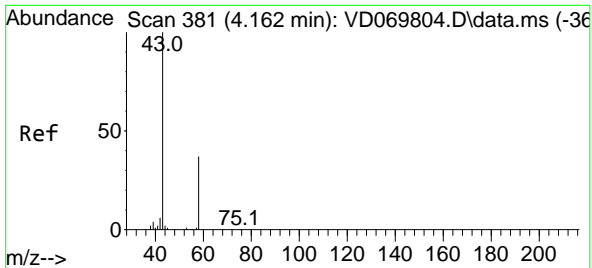


#10
 Methyl Iodide
 Concen: 3.979 ug/l
 RT: 4.315 min Scan# 407
 Delta R.T. 0.012 min
 Lab File: VD070004.D
 Acq: 09 Aug 2021 18:52



Tgt Ion:142 Resp: 941
 Ion Ratio Lower Upper
 142 100
 127 6.9 35.7 53.5#
 141 0.0 12.0 18.0#

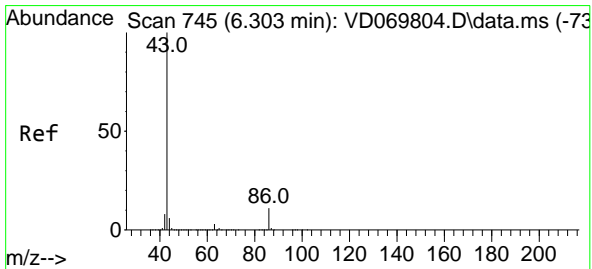
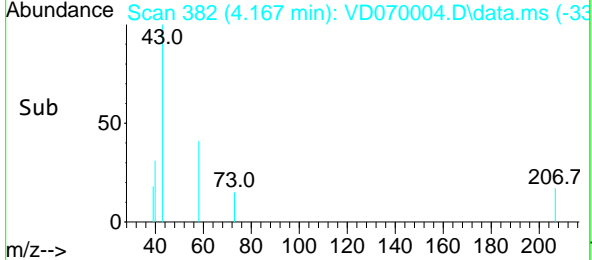
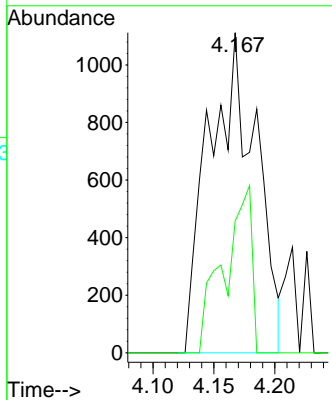
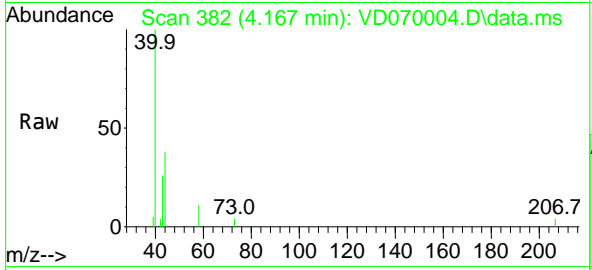




#16
 Acetone
 Concen: 10.486 ug/l
 RT: 4.167 min Scan# 382
 Delta R.T. 0.006 min
 Lab File: VD070004.D
 Acq: 09 Aug 2021 18:52

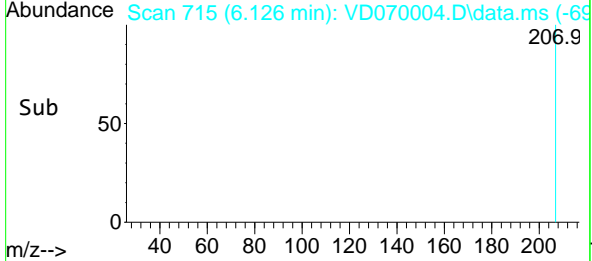
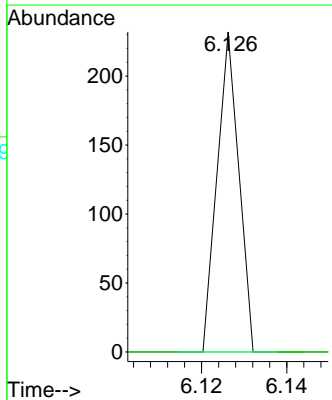
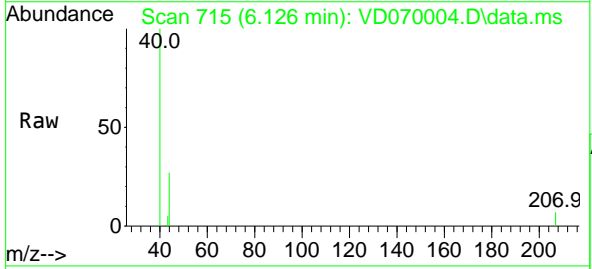
Instrument :
 MSVOA_D
 ClientSampled :

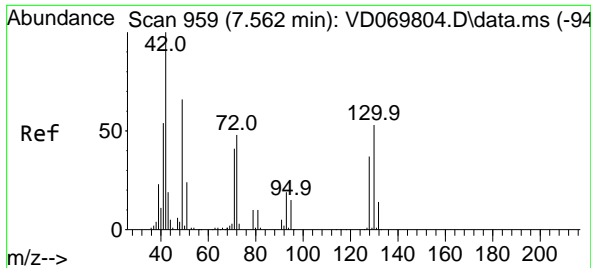
Tgt Ion: 43 Resp: 2974
 Ion Ratio Lower Upper
 43 100
 58 41.2 29.4 44.0



#23
 Vinyl Acetate
 Concen: 20.377 ug/l
 RT: 6.126 min Scan# 715
 Delta R.T. -0.177 min
 Lab File: VD070004.D
 Acq: 09 Aug 2021 18:52

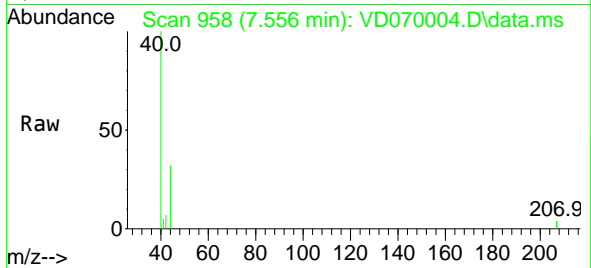
Tgt Ion: 43 Resp: 82
 Ion Ratio Lower Upper
 43 100
 86 0.0 8.6 13.0#



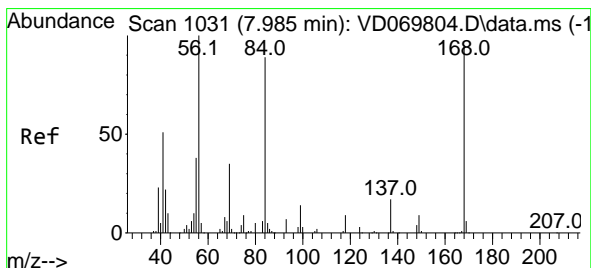
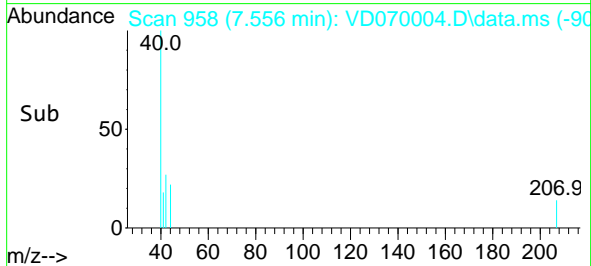
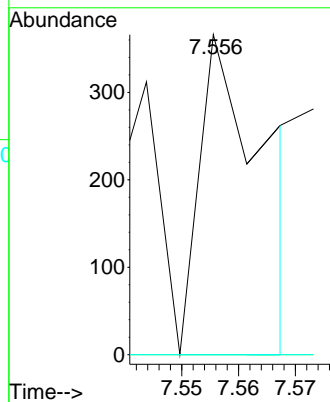


#29
 Tetrahydrofuran
 Concen: 1.202 ug/l
 RT: 7.556 min Scan# 958
 Delta R.T. -0.006 min
 Lab File: VD070004.D
 Acq: 09 Aug 2021 18:52

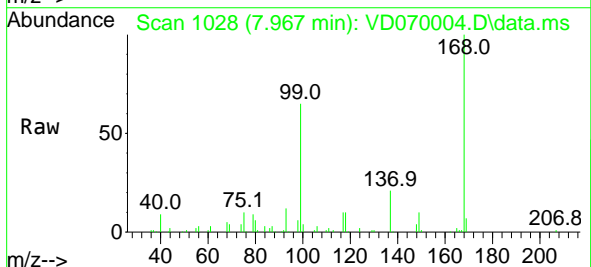
Instrument :
 MSVOA_D
 ClientSampled :



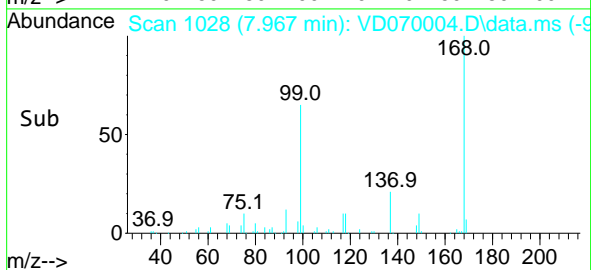
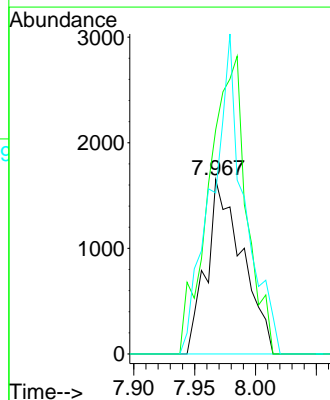
Tgt Ion	Resp	Lower	Upper
42	100		
72	0.0	36.5	54.7#
71	0.0	33.5	50.3#

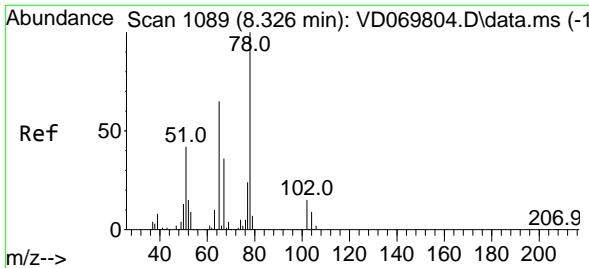


#31
 Cyclohexane
 Concen: 1.099 ug/l
 RT: 7.967 min Scan# 1028
 Delta R.T. -0.018 min
 Lab File: VD070004.D
 Acq: 09 Aug 2021 18:52



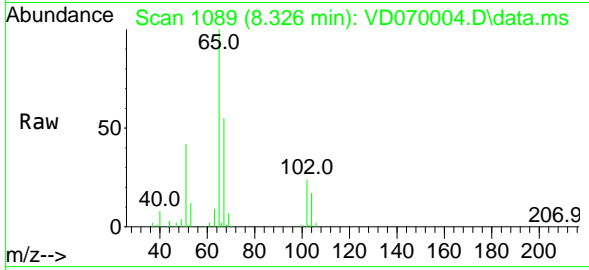
Tgt Ion	Resp	Lower	Upper
56	100		
69	128.6	27.9	41.9#
84	92.4	71.4	107.2



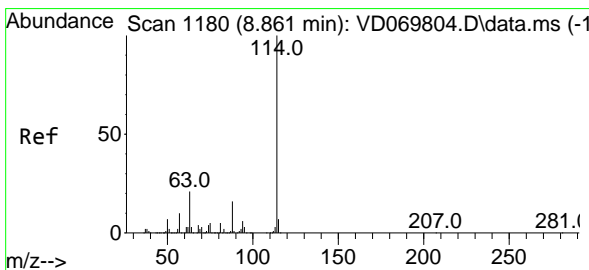
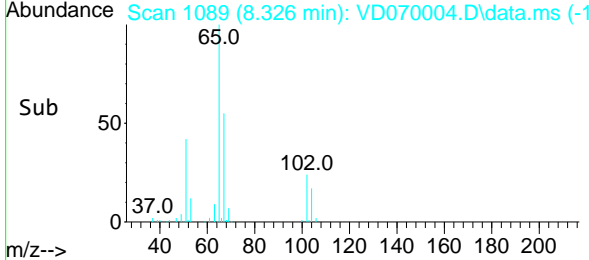
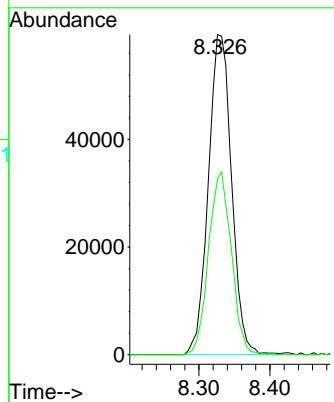


#33
 1,2-Dichloroethane-d4
 Concen: 86.018 ug/l
 RT: 8.326 min Scan# 1089
 Delta R.T. -0.000 min
 Lab File: VD070004.D
 Acq: 09 Aug 2021 18:52

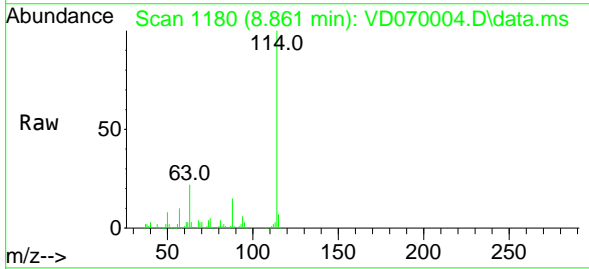
Instrument :
 MSVOA_D
 ClientSampled :



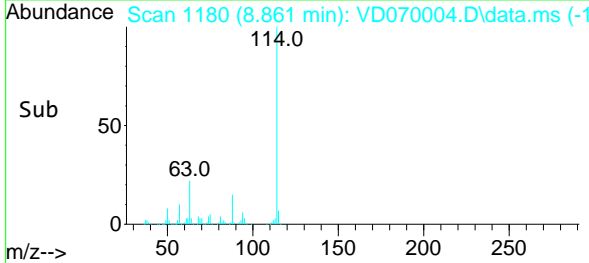
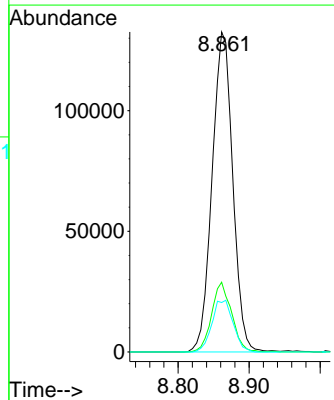
Tgt Ion: 65 Resp: 135050
 Ion Ratio Lower Upper
 65 100
 67 56.1 0.0 111.2

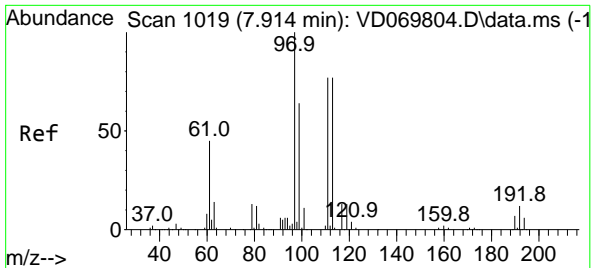


#34
 1,4-Difluorobenzene
 Concen: 50.000 ug/l
 RT: 8.861 min Scan# 1180
 Delta R.T. 0.000 min
 Lab File: VD070004.D
 Acq: 09 Aug 2021 18:52



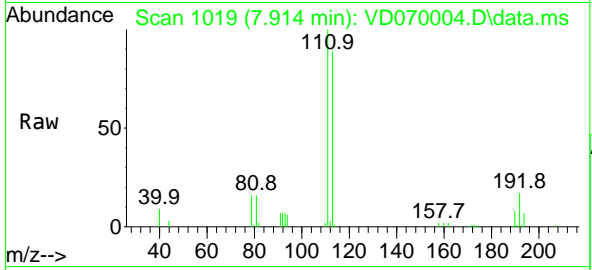
Tgt Ion:114 Resp: 267299
 Ion Ratio Lower Upper
 114 100
 63 21.8 0.0 41.6
 88 15.4 0.0 31.4



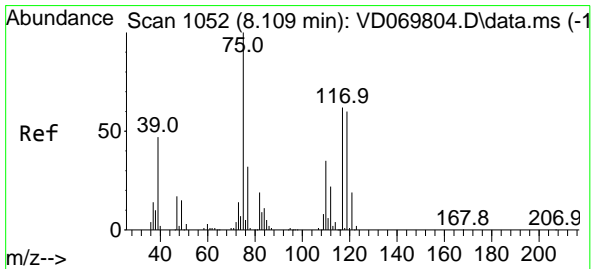
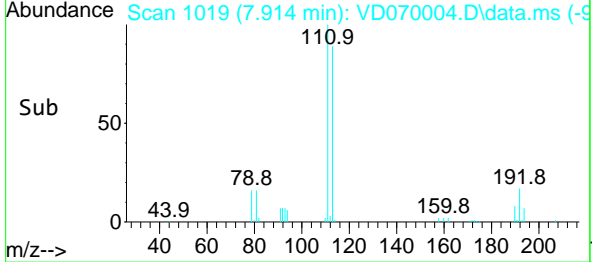
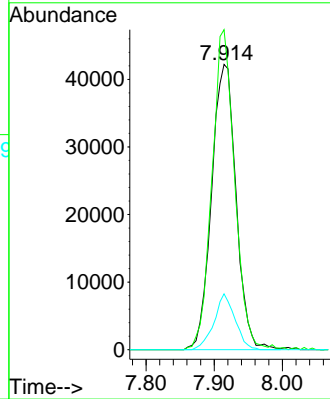


#35
 Dibromofluoromethane
 Concen: 62.517 ug/l
 RT: 7.914 min Scan# 1019
 Delta R.T. -0.000 min
 Lab File: VD070004.D
 Acq: 09 Aug 2021 18:52

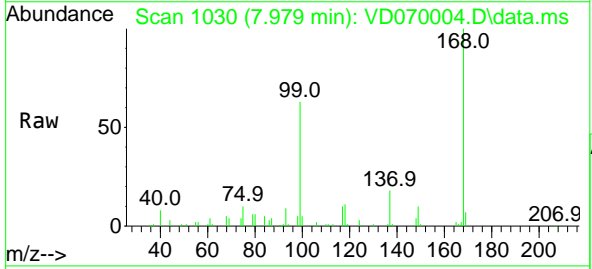
Instrument :
 MSVOA_D
 ClientSampled :



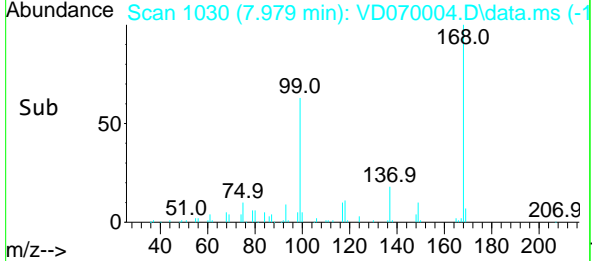
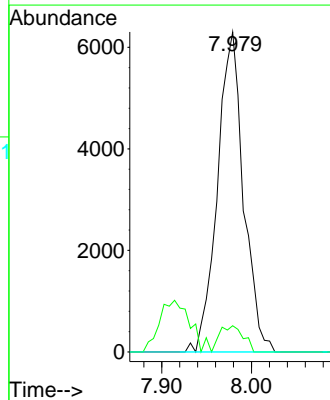
Tgt Ion:113 Resp: 105344
 Ion Ratio Lower Upper
 113 100
 111 103.9 80.5 120.7
 192 16.8 12.6 19.0

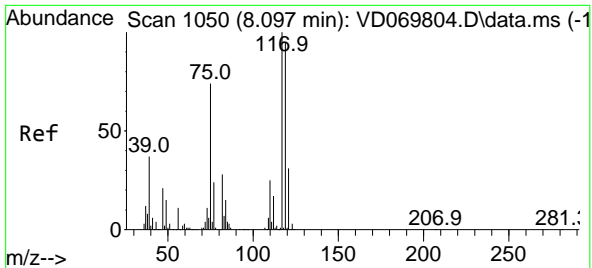


#36
 1,1-Dichloropropene
 Concen: 4.404 ug/l
 RT: 7.979 min Scan# 1030
 Delta R.T. -0.130 min
 Lab File: VD070004.D
 Acq: 09 Aug 2021 18:52



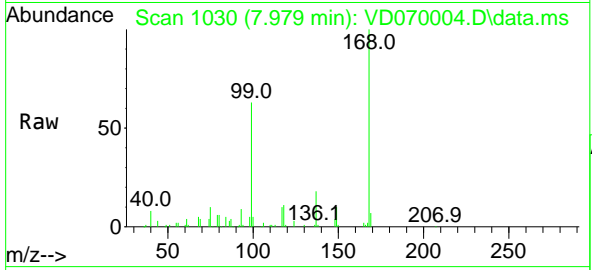
Tgt Ion: 75 Resp: 12703
 Ion Ratio Lower Upper
 75 100
 110 7.4 16.9 50.7#
 77 0.0 24.9 37.3#





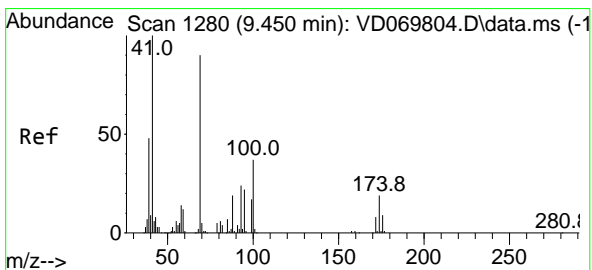
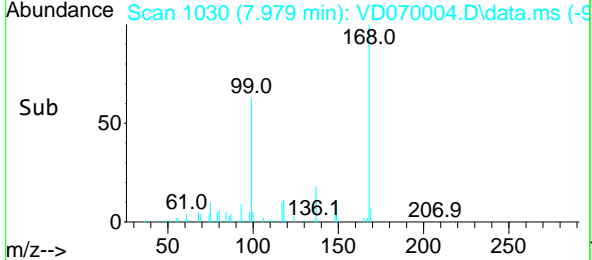
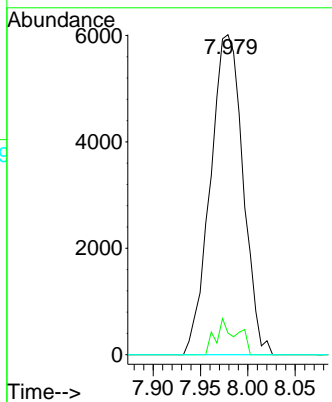
#38
 Carbon Tetrachloride
 Concen: 5.478 ug/l
 RT: 7.979 min Scan# 1030
 Delta R.T. -0.118 min
 Lab File: VD070004.D
 Acq: 09 Aug 2021 18:52

Instrument :
 MSVOA_D
 ClientSampled :

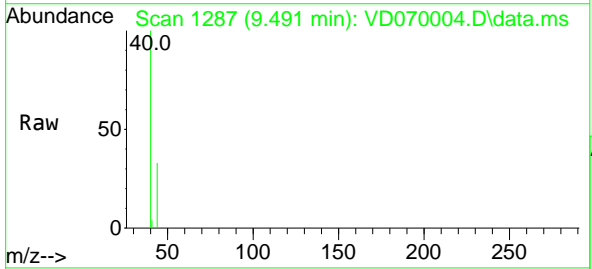


Tgt Ion: 117 Resp: 14434

Ion	Ratio	Lower	Upper
117	100		
119	6.7	76.2	114.2#
121	0.0	24.5	36.7#

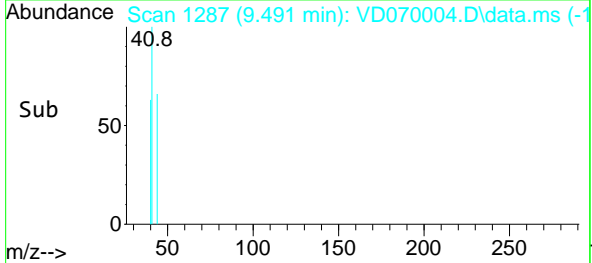
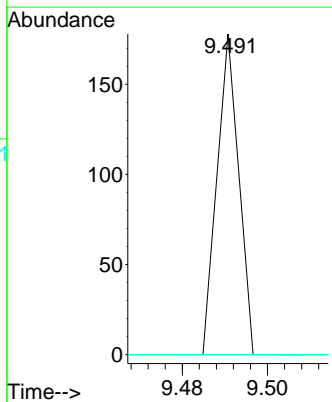


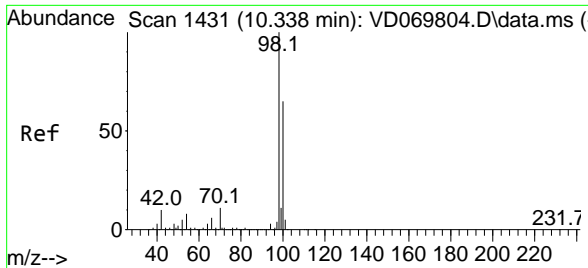
#48
 Methyl methacrylate
 Concen: 2.806 ug/l
 RT: 9.491 min Scan# 1287
 Delta R.T. 0.041 min
 Lab File: VD070004.D
 Acq: 09 Aug 2021 18:52



Tgt Ion: 41 Resp: 63

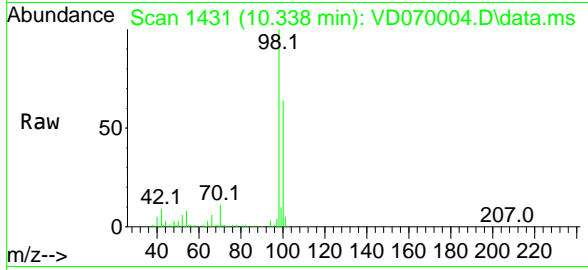
Ion	Ratio	Lower	Upper
41	100		
69	0.0	73.4	110.2#
39	0.0	36.6	55.0#



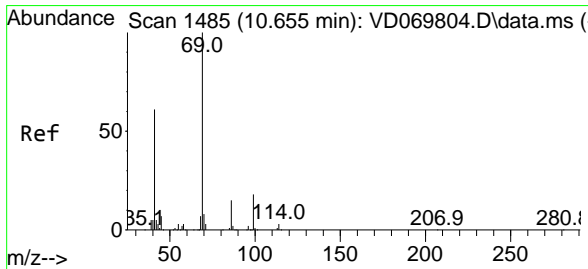
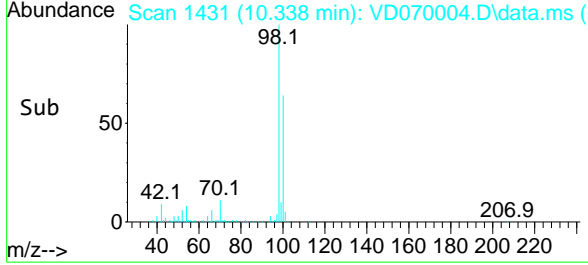
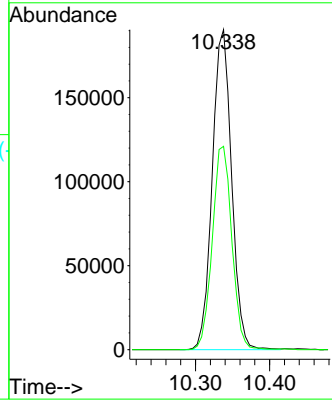


#50
 Toluene-d8
 Concen: 53.086 ug/l
 RT: 10.338 min Scan# 1431
 Delta R.T. -0.000 min
 Lab File: VD070004.D
 Acq: 09 Aug 2021 18:52

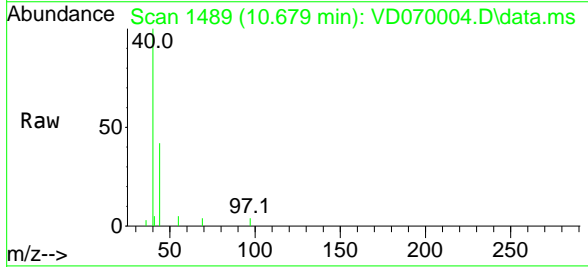
Instrument :
 MSVOA_D
 ClientSampled :



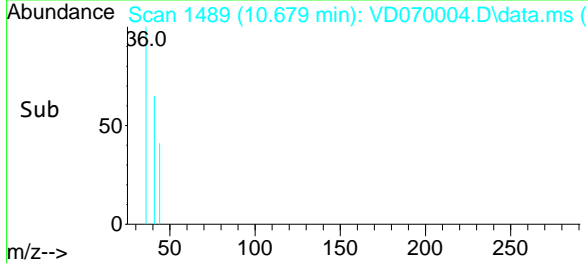
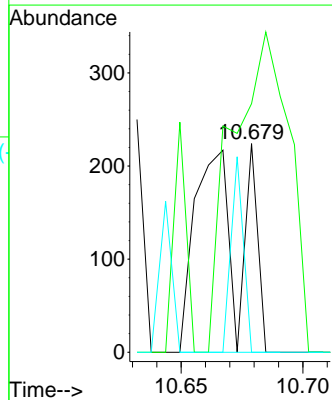
Tgt Ion: 98 Resp: 344922
 Ion Ratio Lower Upper
 98 100
 100 64.3 51.9 77.9

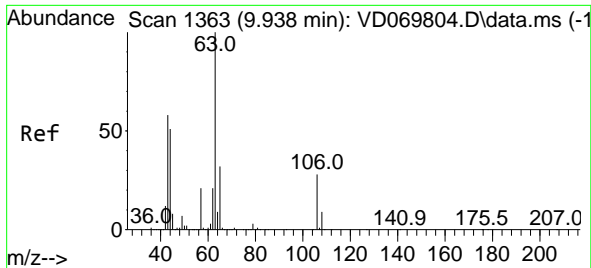


#56
 Ethyl methacrylate
 Concen: 4.035 ug/l
 RT: 10.679 min Scan# 1489
 Delta R.T. 0.024 min
 Lab File: VD070004.D
 Acq: 09 Aug 2021 18:52



Tgt Ion: 69 Resp: 285
 Ion Ratio Lower Upper
 69 100
 41 196.5 50.2 75.2#
 39 26.0 22.0 33.0

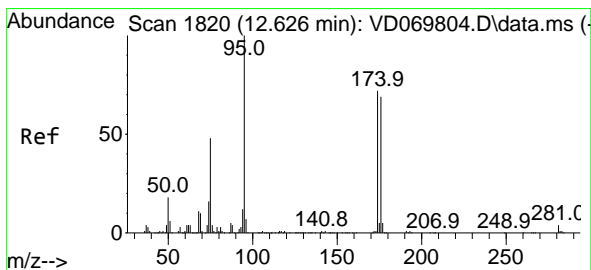
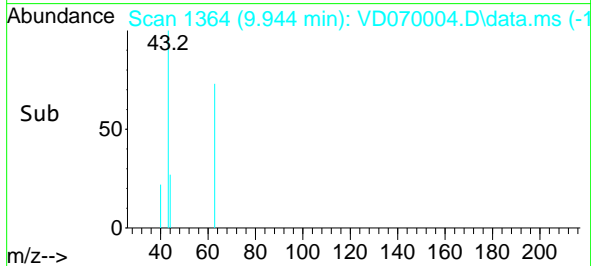
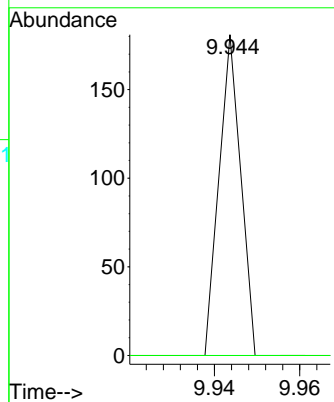
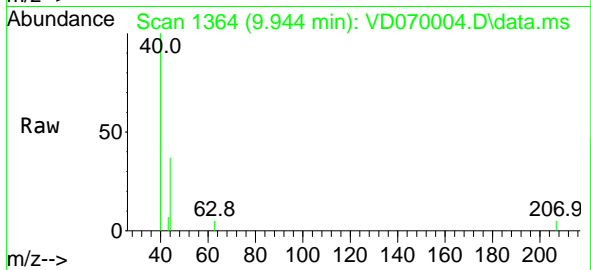




#58
 2-Chloroethyl Vinyl ether
 Concen: 20.941 ug/l
 RT: 9.944 min Scan# 1364
 Delta R.T. 0.006 min
 Lab File: VD070004.D
 Acq: 09 Aug 2021 18:52

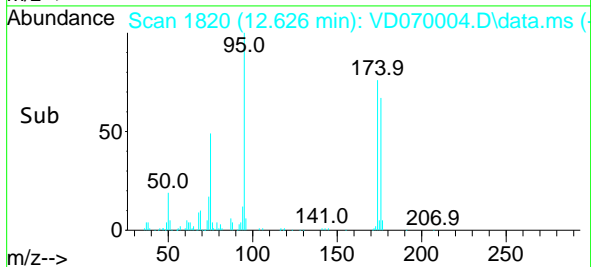
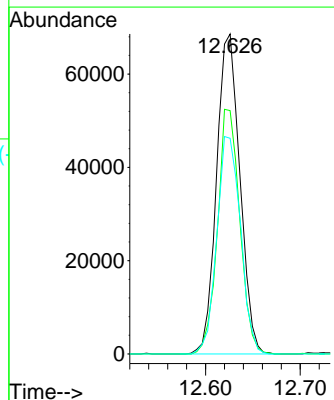
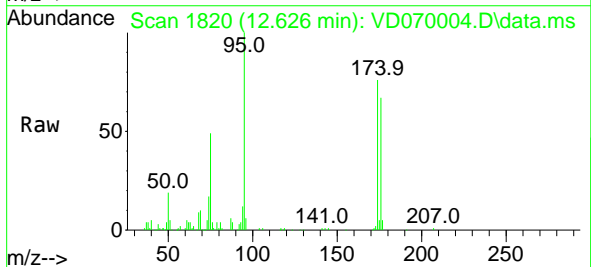
Instrument :
 MSVOA_D
 ClientSampled :

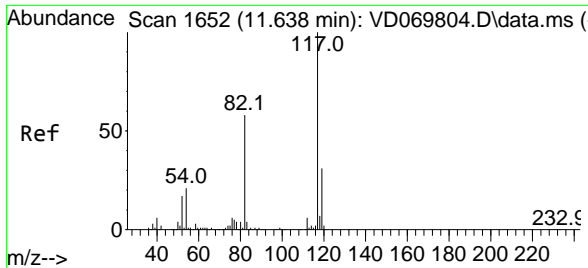
Tgt Ion: 63 Resp: 64
 Ion Ratio Lower Upper
 63 100
 106 0.0 21.8 32.6#



#62
 4-Bromofluorobenzene
 Concen: 54.089 ug/l
 RT: 12.626 min Scan# 1820
 Delta R.T. -0.000 min
 Lab File: VD070004.D
 Acq: 09 Aug 2021 18:52

Tgt Ion: 95 Resp: 117453
 Ion Ratio Lower Upper
 95 100
 174 73.0 0.0 142.6
 176 69.0 0.0 134.2



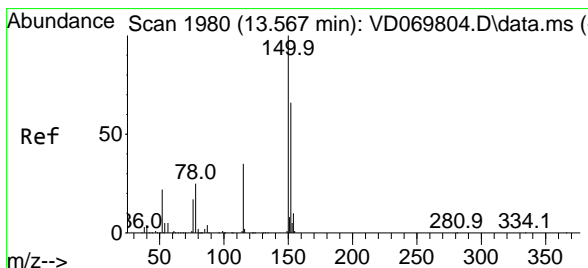
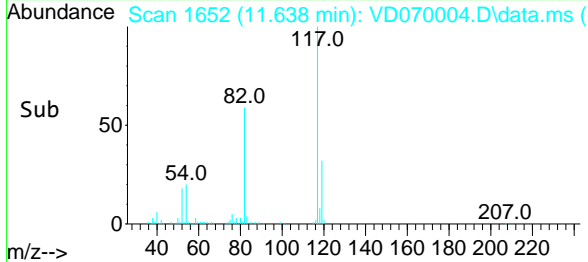
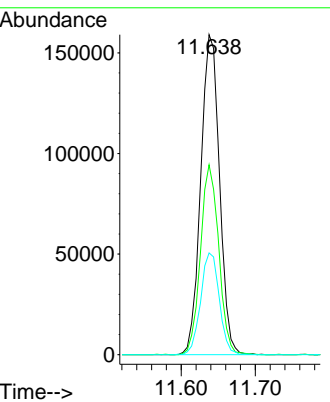
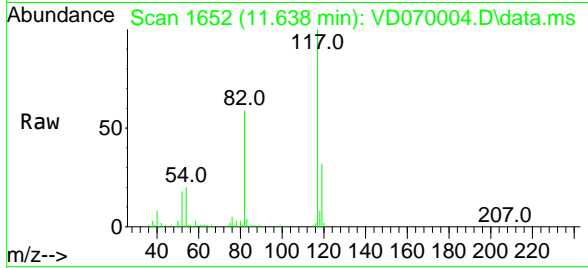


#63
 Chlorobenzene-d5
 Concen: 50.000 ug/l
 RT: 11.638 min Scan# 1652
 Delta R.T. -0.000 min
 Lab File: VD070004.D
 Acq: 09 Aug 2021 18:52

Instrument :
 MSVOA_D
 ClientSampled :

Tgt Ion:117 Resp: 279311

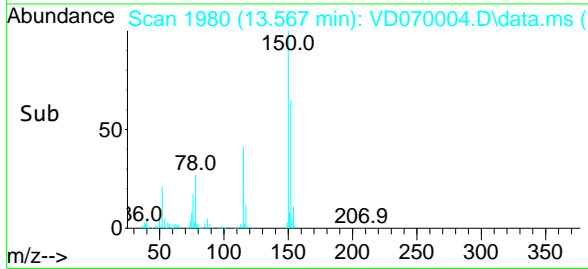
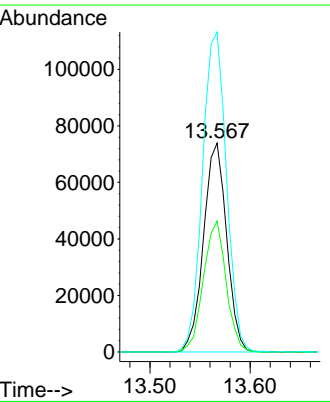
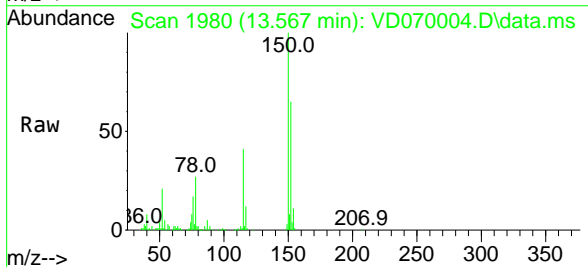
Ion	Ratio	Lower	Upper
117	100		
82	59.3	46.3	69.5
119	31.8	24.7	37.1

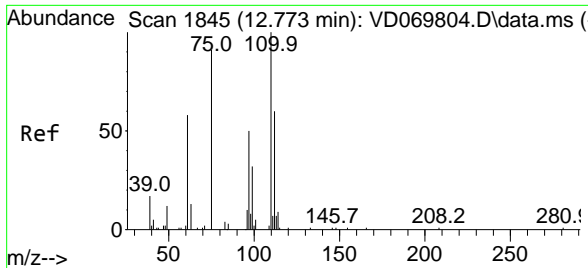


#72
 1,4-Dichlorobenzene-d4
 Concen: 50.000 ug/l
 RT: 13.567 min Scan# 1980
 Delta R.T. -0.000 min
 Lab File: VD070004.D
 Acq: 09 Aug 2021 18:52

Tgt Ion:152 Resp: 118388

Ion	Ratio	Lower	Upper
152	100		
115	61.6	31.1	93.3
150	158.7	0.0	343.0

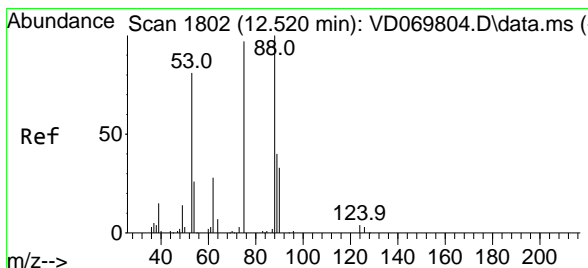
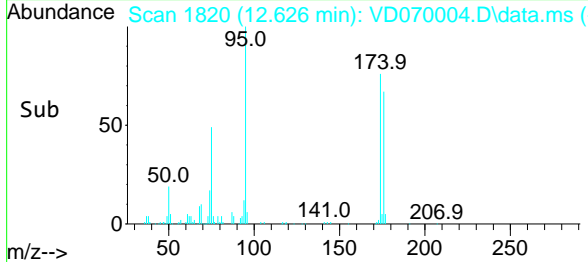
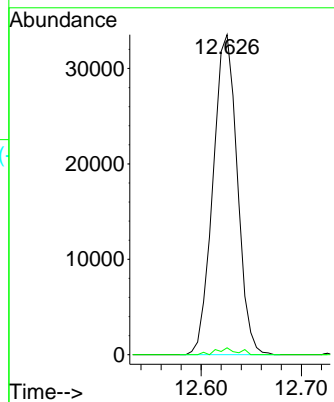
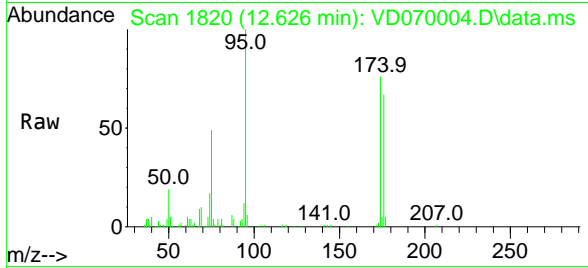




#76
 1,2,3-Trichloropropane
 Concen: 44.820 ug/l
 RT: 12.626 min Scan# 1820
 Delta R.T. -0.147 min
 Lab File: VD070004.D
 Acq: 09 Aug 2021 18:52

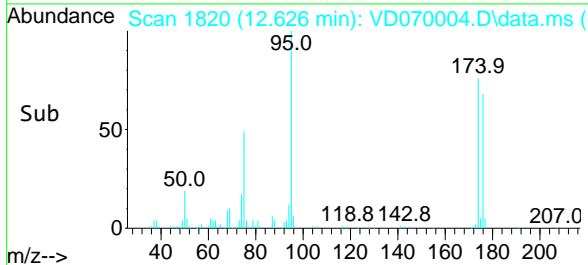
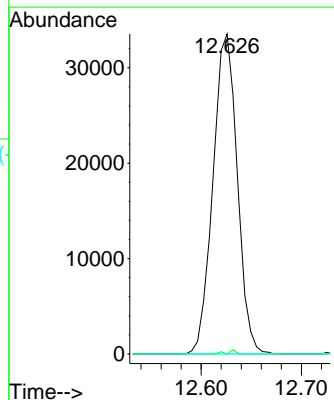
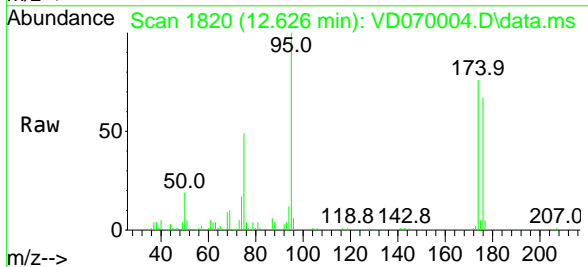
Instrument :
 MSVOA_D
 ClientSampled :

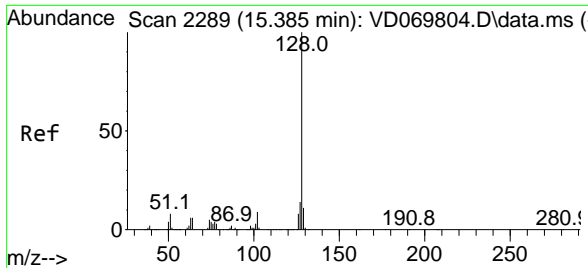
Tgt Ion: 75 Resp: 56401
 Ion Ratio Lower Upper
 75 100
 77 1.8 181.5 544.5#



#81
 trans-1,4-Dichloro-2-butene
 Concen: 135.973 ug/l
 RT: 12.626 min Scan# 1820
 Delta R.T. 0.106 min
 Lab File: VD070004.D
 Acq: 09 Aug 2021 18:52

Tgt Ion: 75 Resp: 56401
 Ion Ratio Lower Upper
 75 100
 53 0.4 67.2 100.8#
 89 0.0 35.8 53.6#





#95
 Naphthalene
 Concen: 5.106 ug/l
 RT: 15.390 min Scan# 2290
 Delta R.T. 0.005 min
 Lab File: VD070004.D
 Acq: 09 Aug 2021 18:52

Instrument :
 MSVOA_D
 ClientSampled :

Tgt Ion	Resp	Lower	Upper
128	100		
127	0.0	10.6	16.0#
129	0.0	8.6	12.8#

