

Data Path : Z:\voasrv\HPCHEM1\MSVOA\_D\Data\VD080921\  
 Data File : VD070013.D  
 Acq On : 09 Aug 2021 23:11  
 Operator : VA/SY  
 Sample : M3318-04  
 Misc : 5.00G/5.00ml/MSVOA\_D/SOIL  
 ALS Vial : 21 Sample Multiplier: 1

Instrument :  
 MSVOA\_D  
 ClientSampleId :

Quant Time: Aug 10 07:08:57 2021  
 Quant Method : Z:\voasrv\HPCHEM1\MSVOA\_D\Method\82D072221S.M  
 Quant Title : SW846 8260  
 QLast Update : Fri Jul 23 04:51:13 2021  
 Response via : Initial Calibration

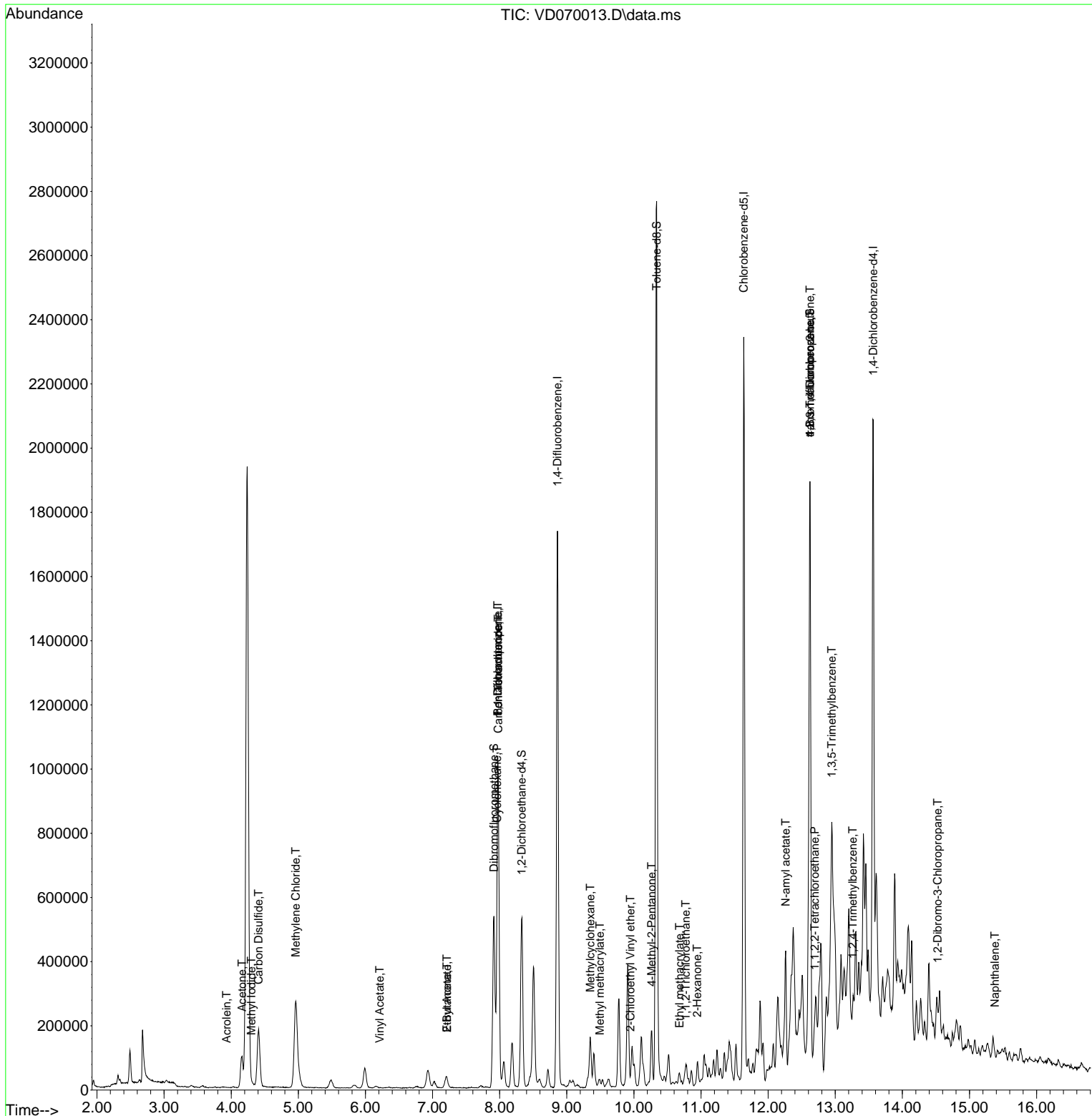
Compound	R.T.	QIon	Response	Conc	Units	Dev(Min)
-----						
Internal Standards						
1) Pentafluorobenzene	7.973	168	673596	50.000	ug/l	0.00
34) 1,4-Difluorobenzene	8.861	114	1438325	50.000	ug/l	0.00
63) Chlorobenzene-d5	11.638	117	1306726	50.000	ug/l	0.00
72) 1,4-Dichlorobenzene-d4	13.567	152	519263	50.000	ug/l	0.00
System Monitoring Compounds						
33) 1,2-Dichloroethane-d4	8.326	65	420543	54.285	ug/l	0.00
Spiked Amount	50.000	Range	50 - 163	Recovery	=	108.560%
35) Dibromofluoromethane	7.914	113	392760	43.317	ug/l	0.00
Spiked Amount	50.000	Range	54 - 147	Recovery	=	86.640%
50) Toluene-d8	10.338	98	1858808	53.166	ug/l	0.00
Spiked Amount	50.000	Range	49 - 140	Recovery	=	106.340%
62) 4-Bromofluorobenzene	12.626	95	604054	51.697	ug/l	0.00
Spiked Amount	50.000	Range	25 - 144	Recovery	=	103.400%
Target Compounds						
					Qvalue	
5) Bromomethane	2.773	94	1265	Below Cal		95
10) Methyl Iodide	4.303	142	821	3.554	ug/l #	75
13) Acrolein	3.932	56	1525	2.718	ug/l #	14
16) Acetone	4.161	43	175492	125.400	ug/l	92
17) Carbon Disulfide	4.408	76	394572	14.319	ug/l	99
20) Methylene Chloride	4.961	84	222282	17.869	ug/l	96
23) Vinyl Acetate	6.214	43	266	20.367	ug/l #	71
25) 2-Butanone	7.214	43	34708	18.288	ug/l	99
31) Cyclohexane	7.961	56	46692	3.085	ug/l #	70
36) 1,1-Dichloropropene	7.973	75	60846	3.920	ug/l #	51
37) Ethyl Acetate	7.214	43	34708	6.142	ug/l #	68
38) Carbon Tetrachloride	7.979	117	73615	5.192	ug/l #	17
39) Methylcyclohexane	9.349	83	25334	1.425	ug/l #	59
48) Methyl methacrylate	9.491	41	6218	3.836	ug/l #	26
51) 4-Methyl-2-Pentanone	10.267	43	21792	4.132	ug/l #	83
55) 1,1,2-Trichloroethane	10.773	97	14912	1.818	ug/l #	37
56) Ethyl methacrylate	10.679	69	5093	4.359	ug/l #	20
58) 2-Chloroethyl Vinyl ether	9.949	63	122	20.895	ug/l #	48
59) 2-Hexanone	10.943	43	30567	8.763	ug/l #	24
74) N-amyl acetate	12.261	43	86901	11.324	ug/l #	64
75) 1,1,2,2-Tetrachloroethane	12.696	83	13127	1.762	ug/l #	1
76) 1,2,3-Trichloropropane	12.626	75	297869	53.968	ug/l #	1
80) 1,3,5-Trimethylbenzene	12.949	105	79092	2.478	ug/l	98
81) trans-1,4-Dichloro-2-b...	12.626	75	297869	163.724	ug/l #	16
84) 1,2,4-Trimethylbenzene	13.261	105	37946	1.205	ug/l	89
92) 1,2-Dibromo-3-Chloropr...	14.526	75	2647	2.467	ug/l #	8
95) Naphthalene	15.378	128	5629	5.297	ug/l #	75

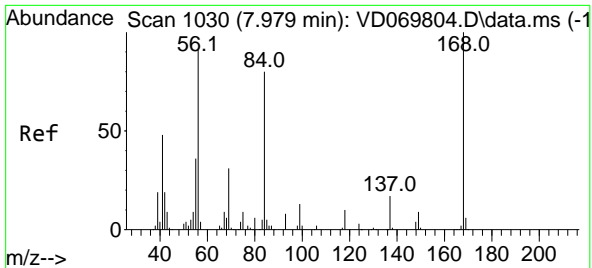
(#) = qualifier out of range (m) = manual integration (+) = signals summed

Data Path : Z:\voasrv\HPCHEM1\MSVOA\_D\Data\VD080921\  
 Data File : VD070013.D  
 Acq On : 09 Aug 2021 23:11  
 Operator : VA/SY  
 Sample : M3318-04  
 Misc : 5.00G/5.00ml/MSVOA\_D/SOIL  
 ALS Vial : 21 Sample Multiplier: 1

Instrument :  
 MSVOA\_D  
 ClientSampleId :

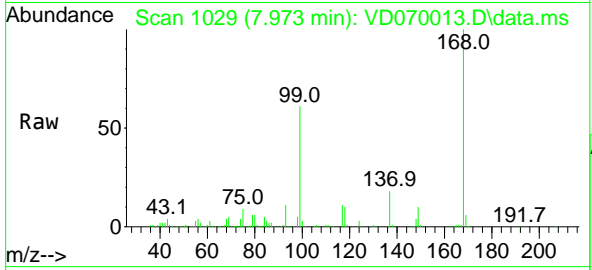
Quant Time: Aug 10 07:08:57 2021  
 Quant Method : Z:\voasrv\HPCHEM1\MSVOA\_D\Method\82D072221S.M  
 Quant Title : SW846 8260  
 QLast Update : Fri Jul 23 04:51:13 2021  
 Response via : Initial Calibration



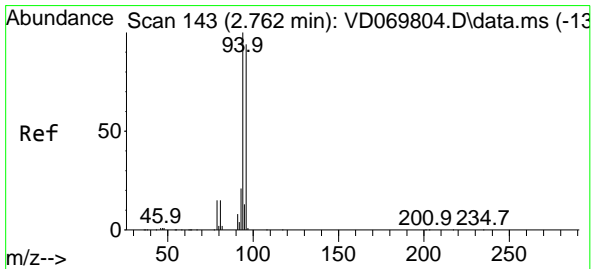
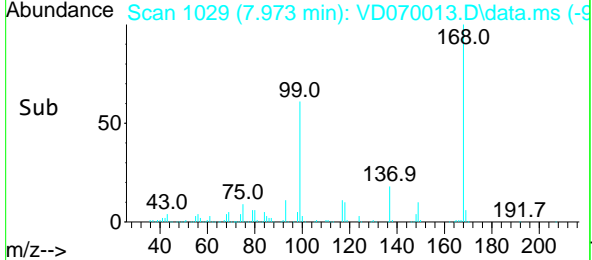
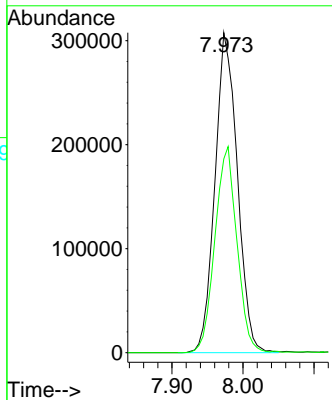


#1  
 Pentafluorobenzene  
 Concen: 50.000 ug/l  
 RT: 7.973 min Scan# 1029  
 Delta R.T. -0.006 min  
 Lab File: VD070013.D  
 Acq: 09 Aug 2021 23:11

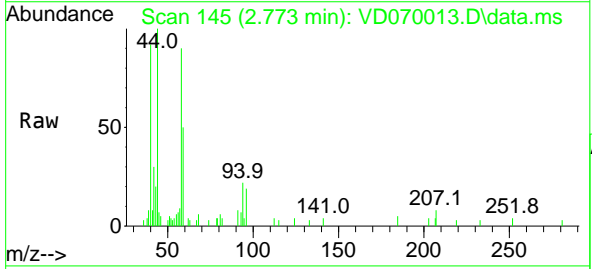
Instrument :  
 MSVOA\_D  
 ClientSampleId :



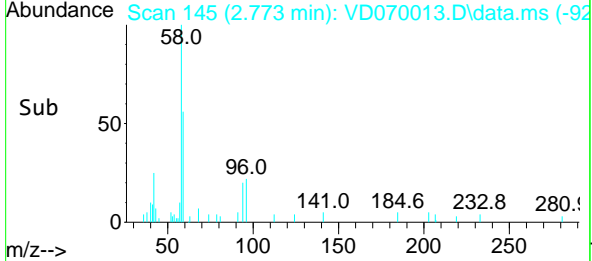
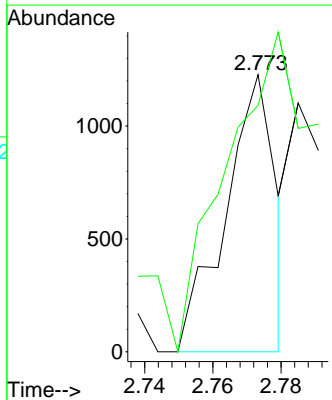
Tgt Ion:168 Resp: 673596  
 Ion Ratio Lower Upper  
 168 100  
 99 60.6 51.1 76.7

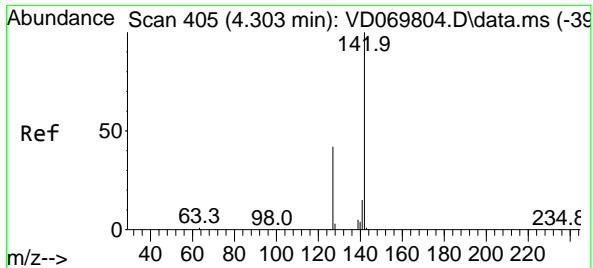


#5  
 Bromomethane  
 Concen: Below Cal  
 RT: 2.773 min Scan# 145  
 Delta R.T. 0.011 min  
 Lab File: VD070013.D  
 Acq: 09 Aug 2021 23:11



Tgt Ion: 94 Resp: 1265  
 Ion Ratio Lower Upper  
 94 100  
 96 88.9 74.8 112.2

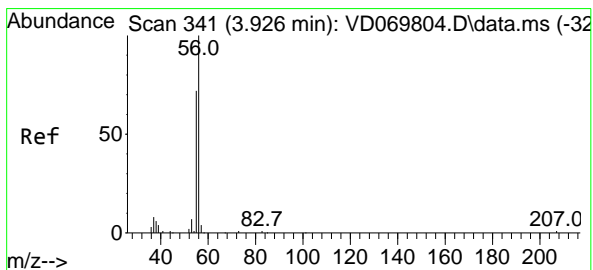
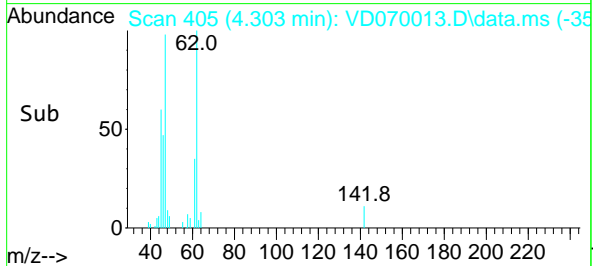
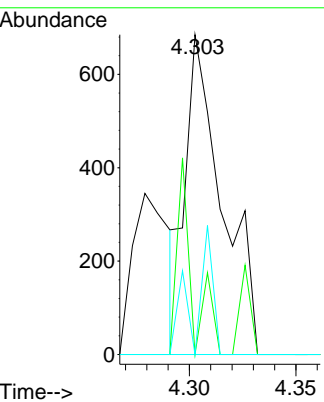
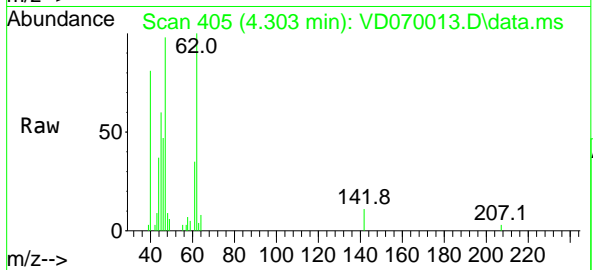




#10  
 Methyl Iodide  
 Concen: 3.554 ug/l  
 RT: 4.303 min Scan# 405  
 Delta R.T. -0.000 min  
 Lab File: VD070013.D  
 Acq: 09 Aug 2021 23:11

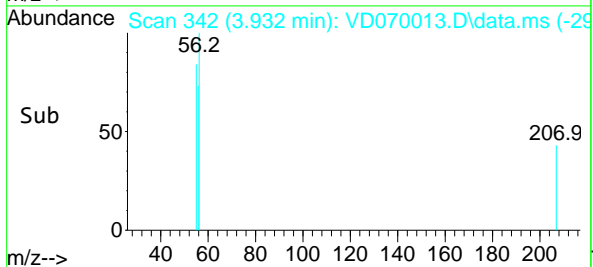
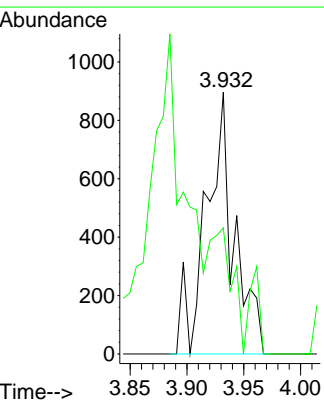
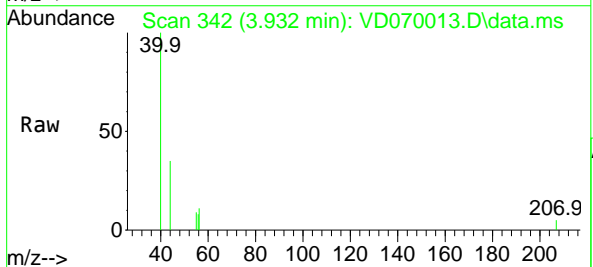
Instrument :  
 MSVOA\_D  
 ClientSampled :

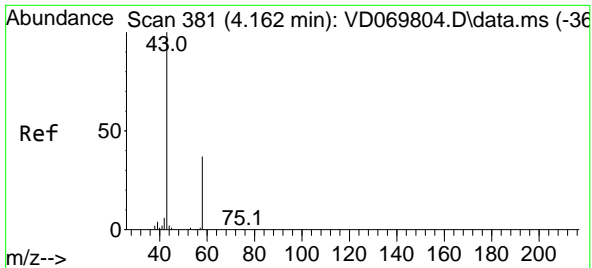
Tgt Ion	Ratio	Lower	Upper
142	100		
127	25.6	35.7	53.5#
141	19.6	12.0	18.0#



#13  
 Acrolein  
 Concen: 2.718 ug/l  
 RT: 3.932 min Scan# 342  
 Delta R.T. 0.006 min  
 Lab File: VD070013.D  
 Acq: 09 Aug 2021 23:11

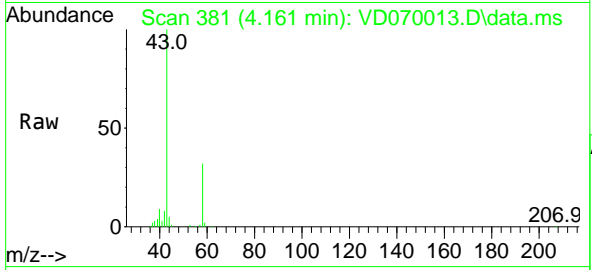
Tgt Ion	Ratio	Lower	Upper
56	100		
55	0.0	57.2	85.8#



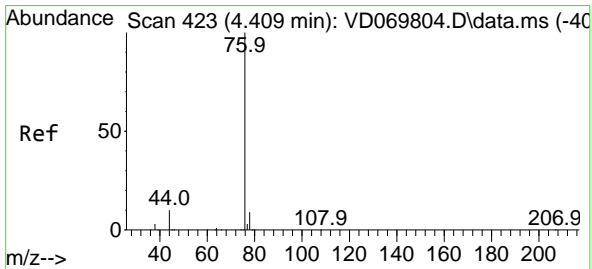
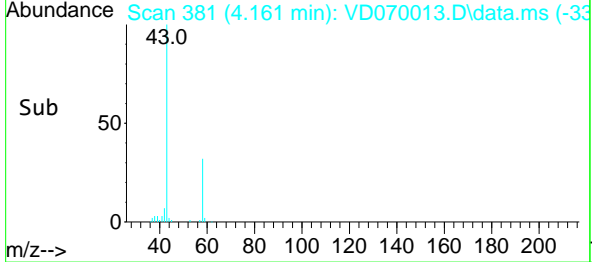
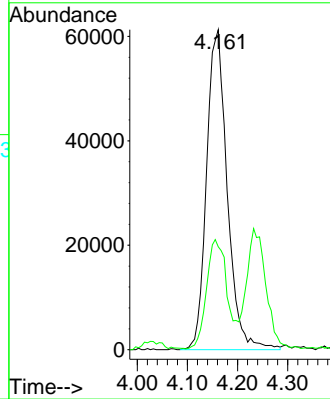


#16  
 Acetone  
 Concen: 125.400 ug/l  
 RT: 4.161 min Scan# 381  
 Delta R.T. -0.000 min  
 Lab File: VD070013.D  
 Acq: 09 Aug 2021 23:11

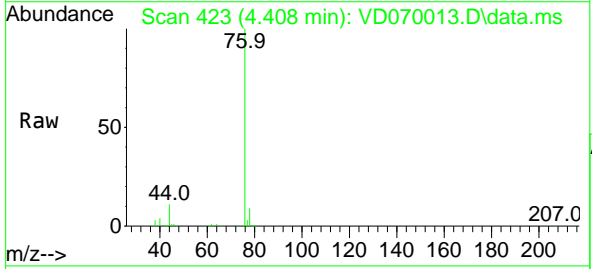
Instrument :  
 MSVOA\_D  
 ClientSampled :



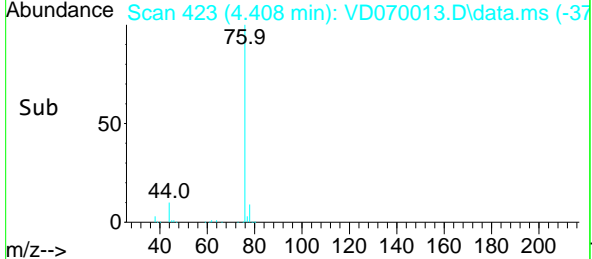
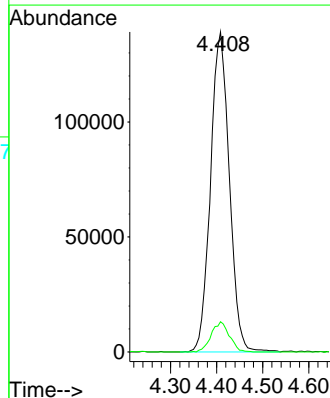
Tgt Ion: 43 Resp: 175492  
 Ion Ratio Lower Upper  
 43 100  
 58 31.7 29.4 44.0

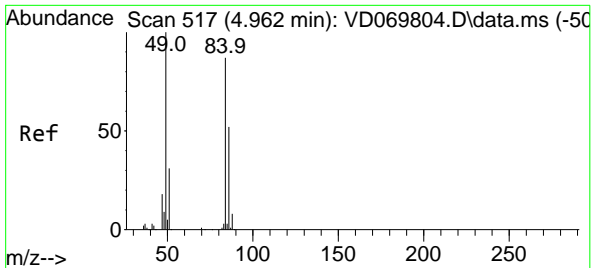


#17  
 Carbon Disulfide  
 Concen: 14.319 ug/l  
 RT: 4.408 min Scan# 423  
 Delta R.T. -0.000 min  
 Lab File: VD070013.D  
 Acq: 09 Aug 2021 23:11



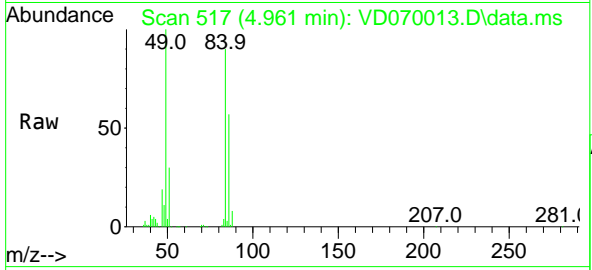
Tgt Ion: 76 Resp: 394572  
 Ion Ratio Lower Upper  
 76 100  
 78 9.5 7.3 10.9





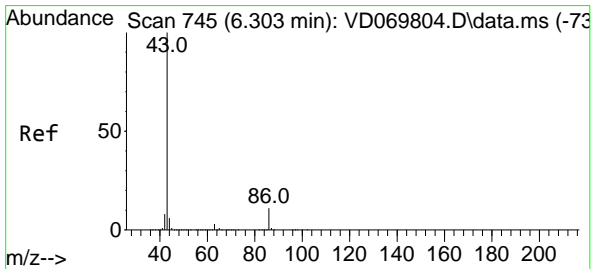
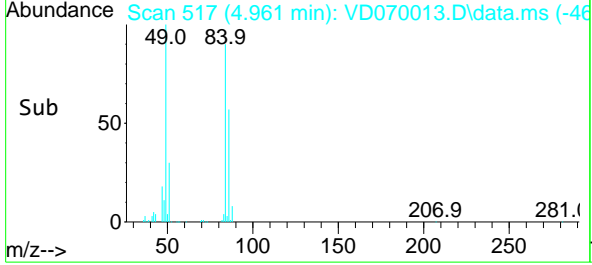
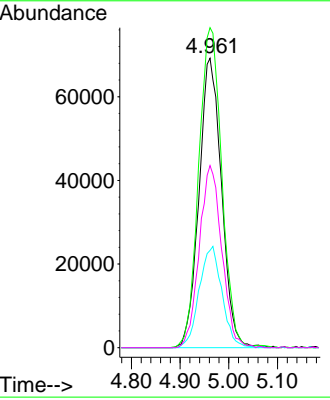
#20  
 Methylene Chloride  
 Concen: 17.869 ug/l  
 RT: 4.961 min Scan# 517  
 Delta R.T. -0.001 min  
 Lab File: VD070013.D  
 Acq: 09 Aug 2021 23:11

Instrument :  
 MSVOA\_D  
 ClientSampled :

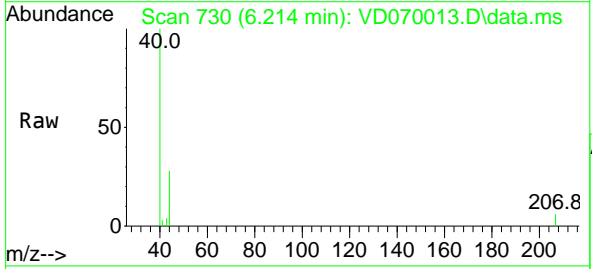


Tgt Ion: 84 Resp: 222282

Ion	Ratio	Lower	Upper
84	100		
49	110.5	92.4	138.6
51	33.6	28.5	42.7
86	62.9	48.2	72.4

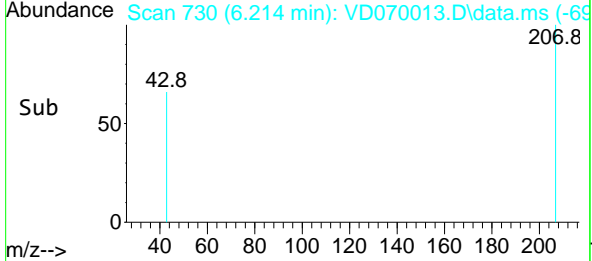
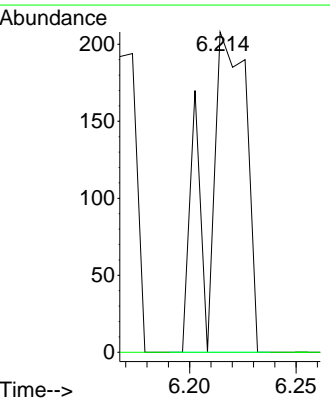


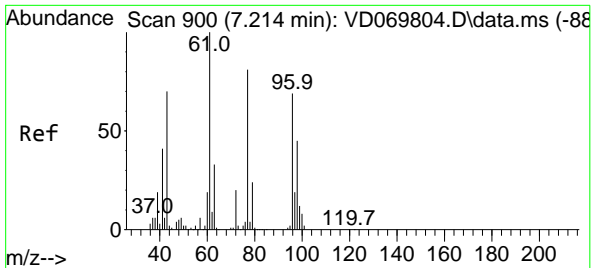
#23  
 Vinyl Acetate  
 Concen: 20.367 ug/l  
 RT: 6.214 min Scan# 730  
 Delta R.T. -0.089 min  
 Lab File: VD070013.D  
 Acq: 09 Aug 2021 23:11



Tgt Ion: 43 Resp: 266

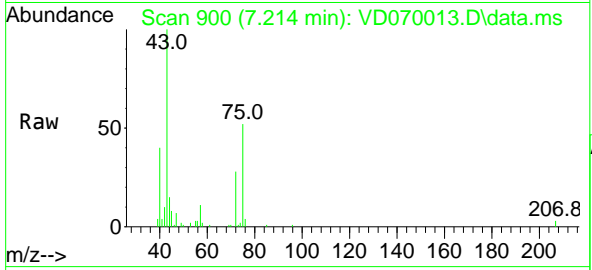
Ion	Ratio	Lower	Upper
43	100		
86	0.0	8.6	13.0#



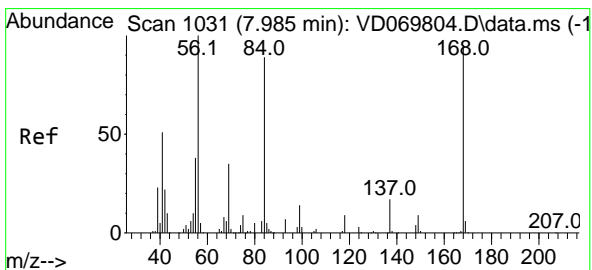
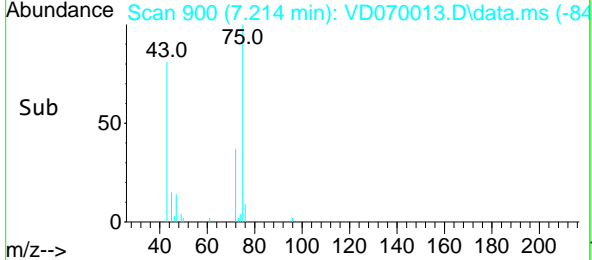
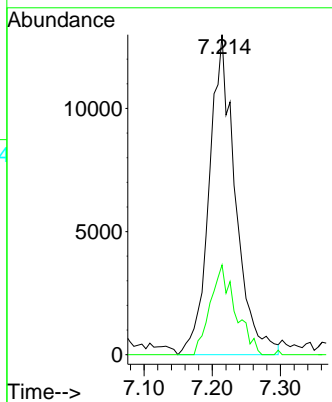


#25  
 2-Butanone  
 Concen: 18.288 ug/l  
 RT: 7.214 min Scan# 900  
 Delta R.T. -0.000 min  
 Lab File: VD070013.D  
 Acq: 09 Aug 2021 23:11

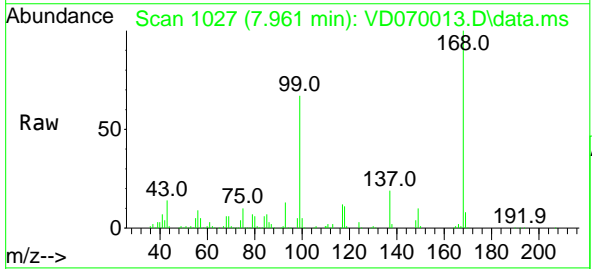
Instrument :  
 MSVOA\_D  
 ClientSampled :



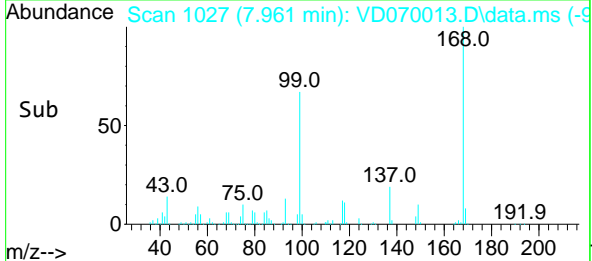
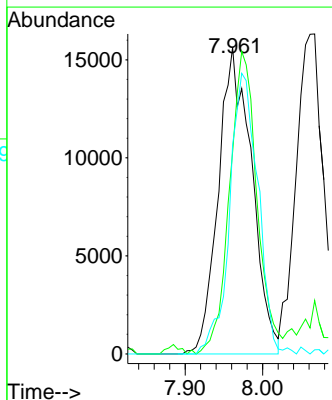
Tgt Ion: 43 Resp: 34708  
 Ion Ratio Lower Upper  
 43 100  
 72 28.1 22.8 34.2

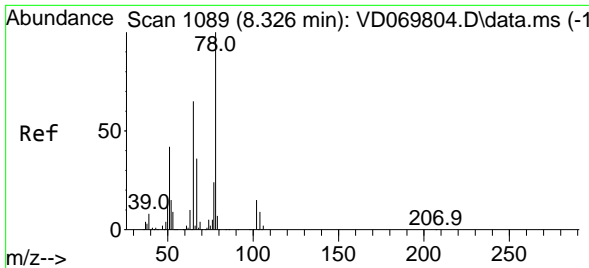


#31  
 Cyclohexane  
 Concen: 3.085 ug/l  
 RT: 7.961 min Scan# 1027  
 Delta R.T. -0.024 min  
 Lab File: VD070013.D  
 Acq: 09 Aug 2021 23:11



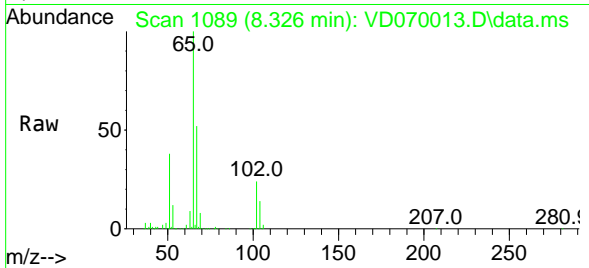
Tgt Ion: 56 Resp: 46692  
 Ion Ratio Lower Upper  
 56 100  
 69 64.3 27.9 41.9#  
 84 68.1 71.4 107.2#



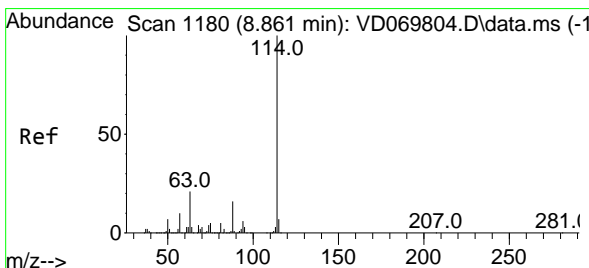
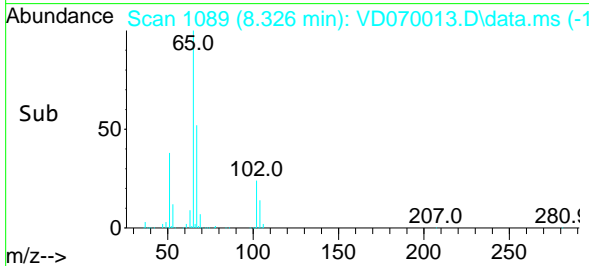
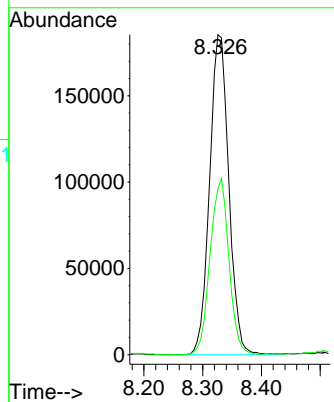


#33  
 1,2-Dichloroethane-d4  
 Concen: 54.285 ug/l  
 RT: 8.326 min Scan# 1089  
 Delta R.T. -0.000 min  
 Lab File: VD070013.D  
 Acq: 09 Aug 2021 23:11

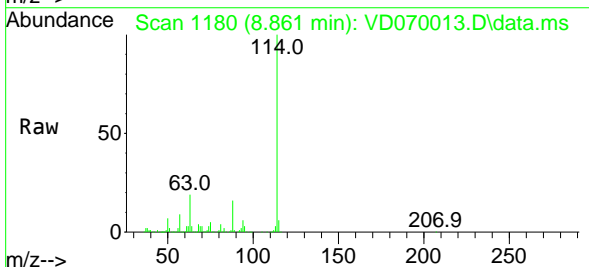
Instrument :  
 MSVOA\_D  
 ClientSampled :



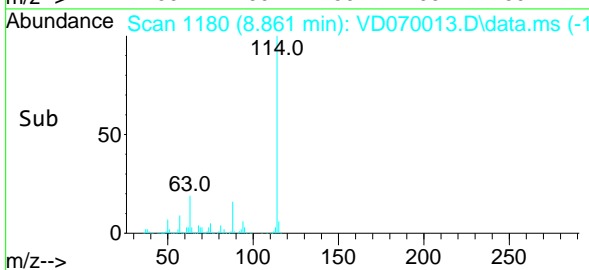
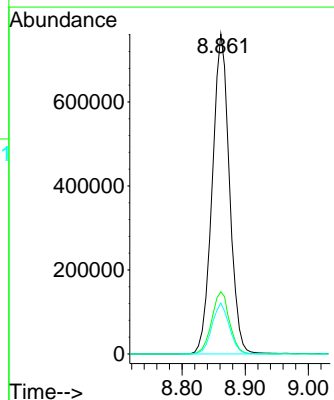
Tgt Ion: 65 Resp: 420543  
 Ion Ratio Lower Upper  
 65 100  
 67 54.0 0.0 111.2



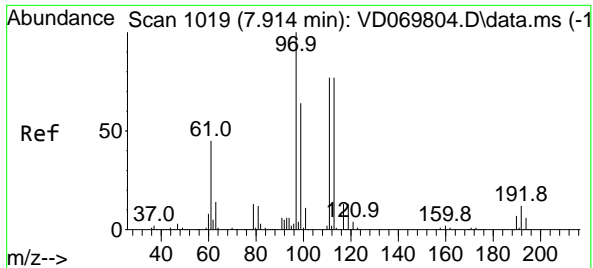
#34  
 1,4-Difluorobenzene  
 Concen: 50.000 ug/l  
 RT: 8.861 min Scan# 1180  
 Delta R.T. 0.000 min  
 Lab File: VD070013.D  
 Acq: 09 Aug 2021 23:11



Tgt Ion: 114 Resp: 1438325  
 Ion Ratio Lower Upper  
 114 100  
 63 19.4 0.0 41.6  
 88 15.9 0.0 31.4



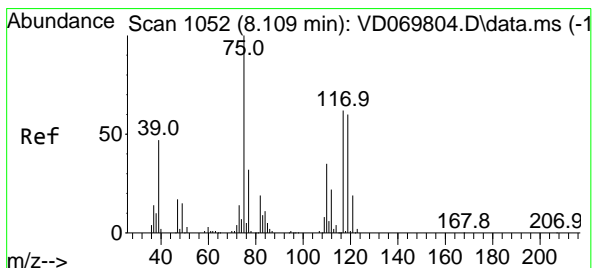
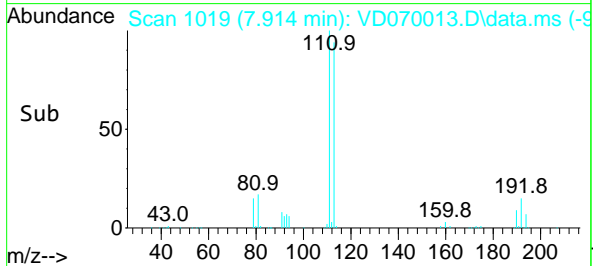
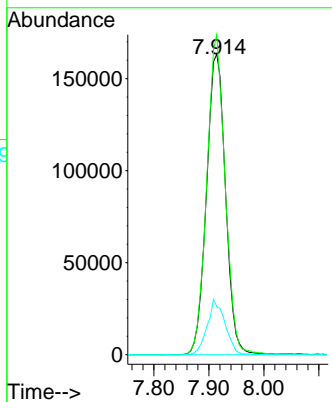
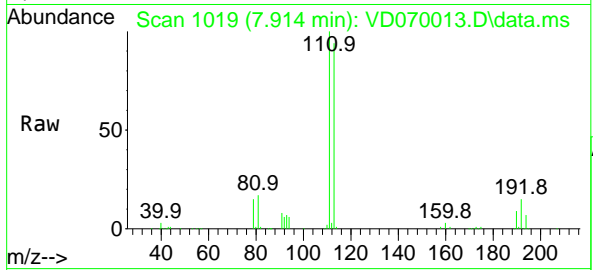




#35  
 Dibromofluoromethane  
 Concen: 43.317 ug/l  
 RT: 7.914 min Scan# 1019  
 Delta R.T. -0.000 min  
 Lab File: VD070013.D  
 Acq: 09 Aug 2021 23:11

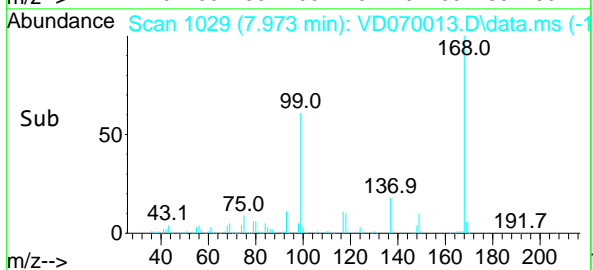
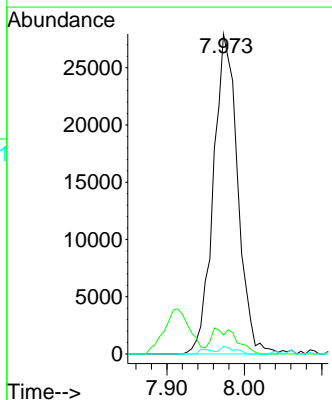
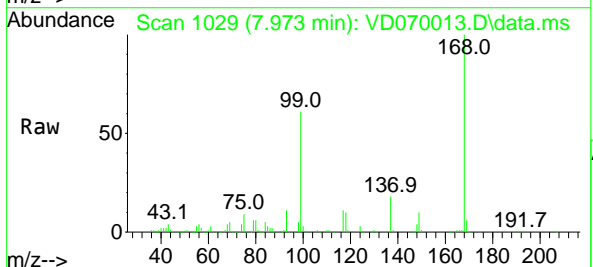
Instrument :  
 MSVOA\_D  
 ClientSampled :

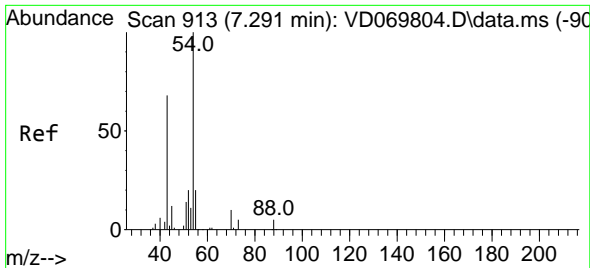
Tgt Ion	Resp	Lower	Upper
113	392760		
113	100		
111	102.7	80.5	120.7
192	17.2	12.6	19.0



#36  
 1,1-Dichloropropene  
 Concen: 3.920 ug/l  
 RT: 7.973 min Scan# 1029  
 Delta R.T. -0.136 min  
 Lab File: VD070013.D  
 Acq: 09 Aug 2021 23:11

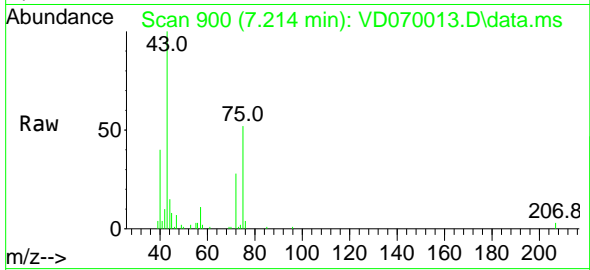
Tgt Ion	Resp	Lower	Upper
75	60846		
75	100		
110	8.2	16.9	50.7#
77	1.4	24.9	37.3#



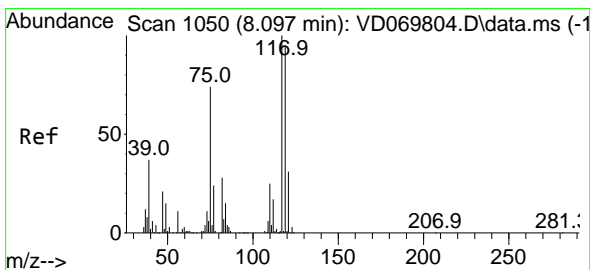
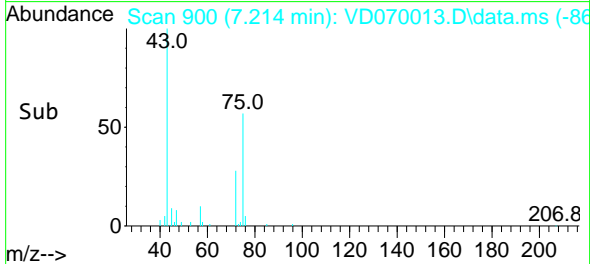
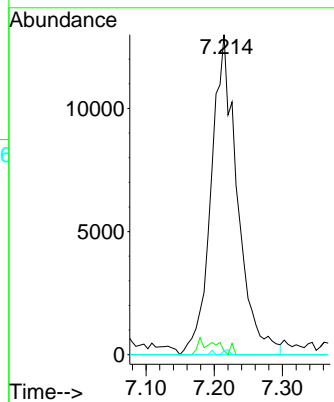


#37  
 Ethyl Acetate  
 Concen: 6.142 ug/l  
 RT: 7.214 min Scan# 900  
 Delta R.T. -0.077 min  
 Lab File: VD070013.D  
 Acq: 09 Aug 2021 23:11

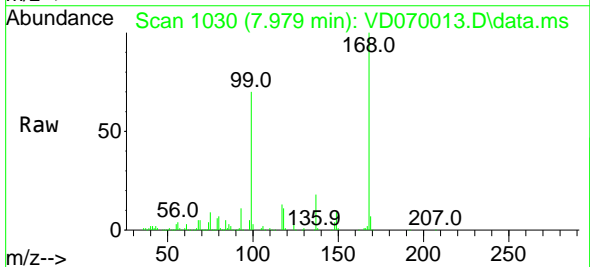
Instrument :  
 MSVOA\_D  
 ClientSampled :



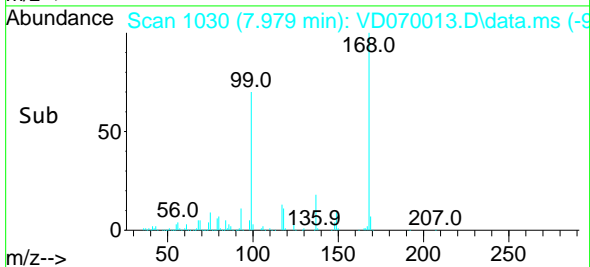
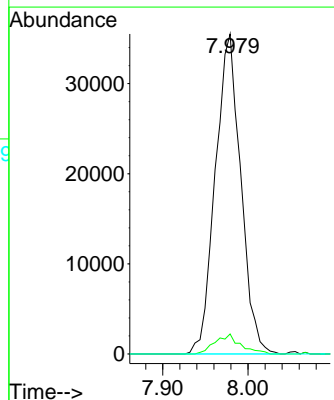
Tgt Ion: 43 Resp: 34708  
 Ion Ratio Lower Upper  
 43 100  
 61 0.5 11.8 17.8#  
 70 0.4 8.9 13.3#

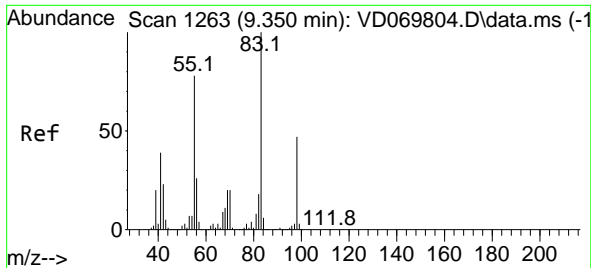


#38  
 Carbon Tetrachloride  
 Concen: 5.192 ug/l  
 RT: 7.979 min Scan# 1030  
 Delta R.T. -0.118 min  
 Lab File: VD070013.D  
 Acq: 09 Aug 2021 23:11



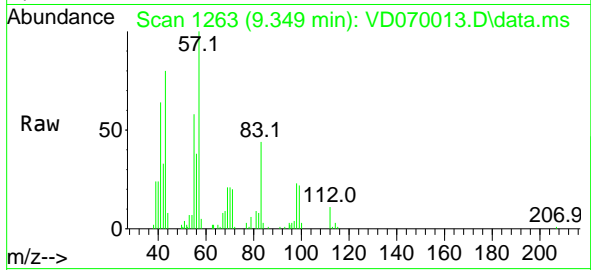
Tgt Ion: 117 Resp: 73615  
 Ion Ratio Lower Upper  
 117 100  
 119 6.2 76.2 114.2#  
 121 0.0 24.5 36.7#



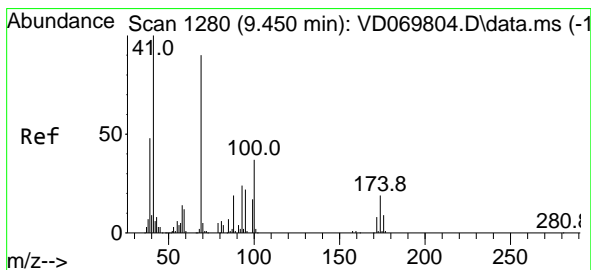
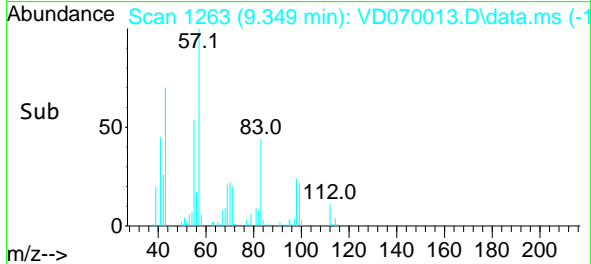
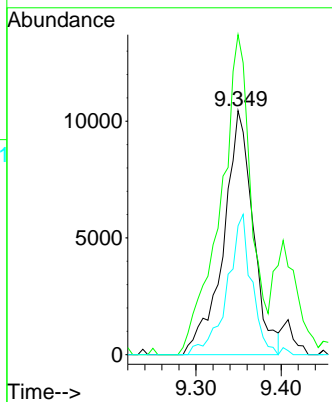


#39  
 Methylcyclohexane  
 Concen: 1.425 ug/l  
 RT: 9.349 min Scan# 1263  
 Delta R.T. -0.000 min  
 Lab File: VD070013.D  
 Acq: 09 Aug 2021 23:11

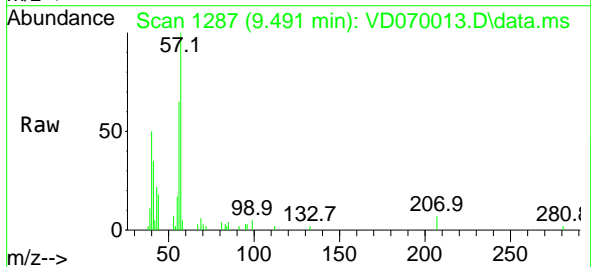
Instrument :  
 MSVOA\_D  
 ClientSampled :



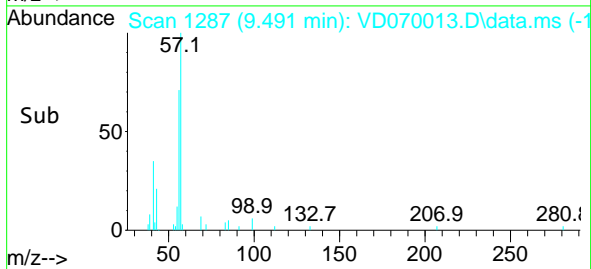
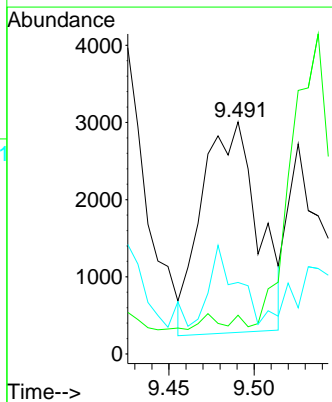
Tgt Ion: 83 Resp: 25334  
 Ion Ratio Lower Upper  
 83 100  
 55 131.2 62.2 93.2#  
 98 52.8 37.8 56.8

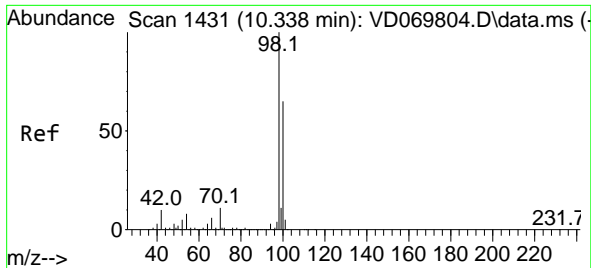


#48  
 Methyl methacrylate  
 Concen: 3.836 ug/l  
 RT: 9.491 min Scan# 1287  
 Delta R.T. 0.041 min  
 Lab File: VD070013.D  
 Acq: 09 Aug 2021 23:11



Tgt Ion: 41 Resp: 6218  
 Ion Ratio Lower Upper  
 41 100  
 69 0.0 73.4 110.2#  
 39 26.0 36.6 55.0#

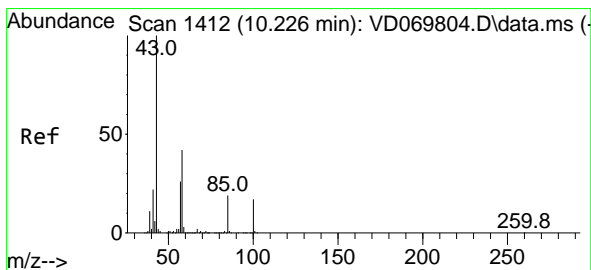
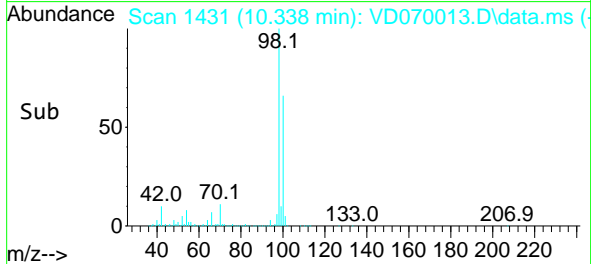
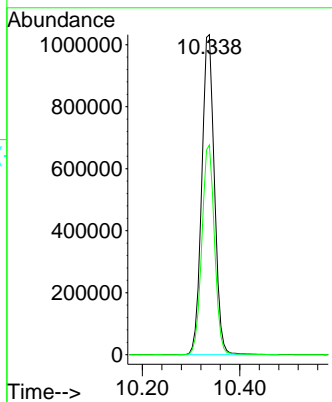
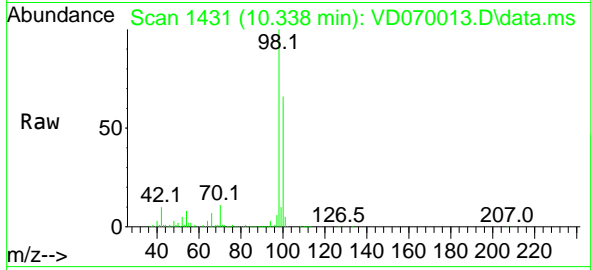




#50  
 Toluene-d8  
 Concen: 53.166 ug/l  
 RT: 10.338 min Scan# 1431  
 Delta R.T. -0.000 min  
 Lab File: VD070013.D  
 Acq: 09 Aug 2021 23:11

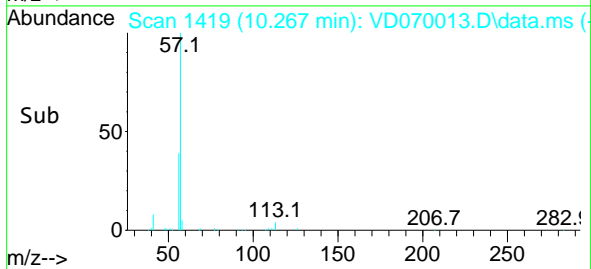
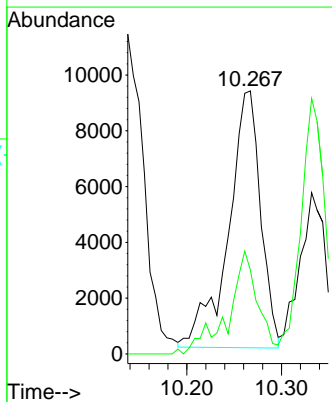
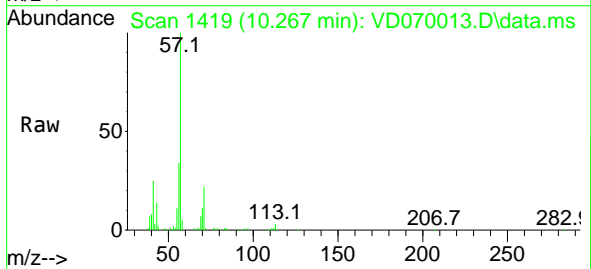
Instrument :  
 MSVOA\_D  
 ClientSampled :

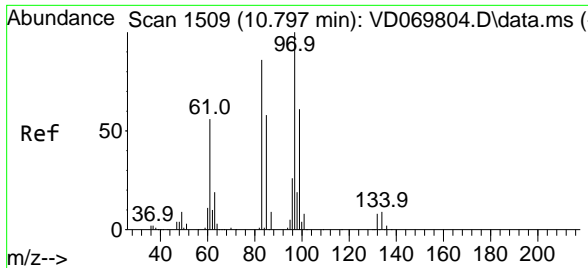
Tgt Ion: 98 Resp: 1858808  
 Ion Ratio Lower Upper  
 98 100  
 100 65.5 51.9 77.9



#51  
 4-Methyl-2-Pentanone  
 Concen: 4.132 ug/l  
 RT: 10.267 min Scan# 1419  
 Delta R.T. 0.041 min  
 Lab File: VD070013.D  
 Acq: 09 Aug 2021 23:11

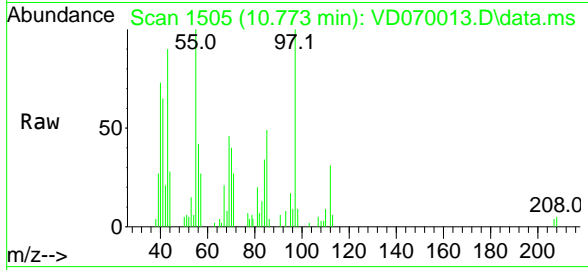
Tgt Ion: 43 Resp: 21792  
 Ion Ratio Lower Upper  
 43 100  
 58 31.6 33.7 50.5#





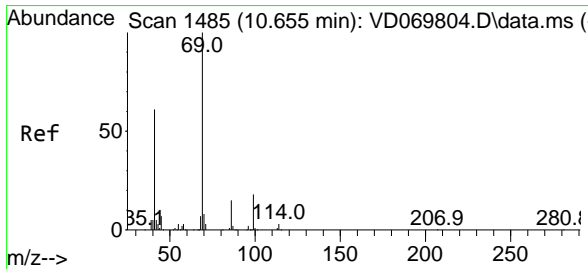
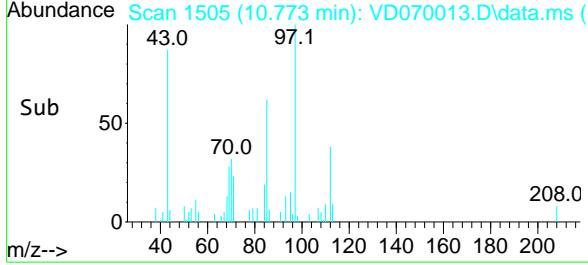
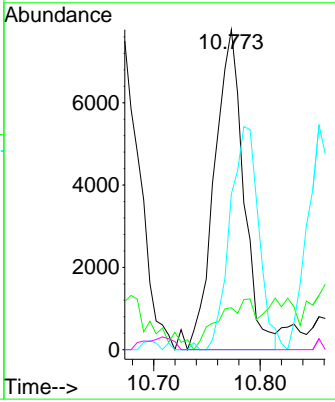
#55  
 1,1,2-Trichloroethane  
 Concen: 1.818 ug/l  
 RT: 10.773 min Scan# 1505  
 Delta R.T. -0.024 min  
 Lab File: VD070013.D  
 Acq: 09 Aug 2021 23:11

Instrument :  
 MSVOA\_D  
 ClientSampled :

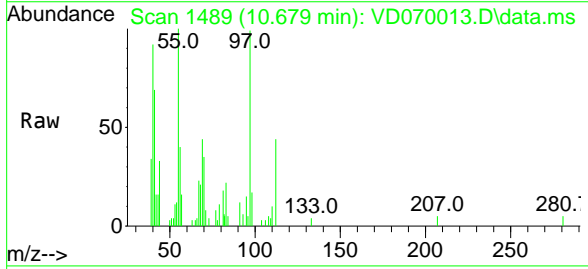


Tgt Ion: 97 Resp: 14912

Ion	Ratio	Lower	Upper
97	100		
83	7.7	69.1	103.7#
85	48.7	46.2	69.2
99	0.0	48.8	73.2#

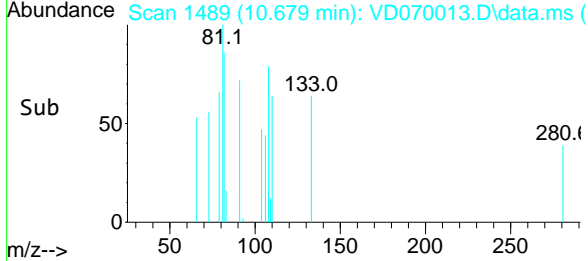
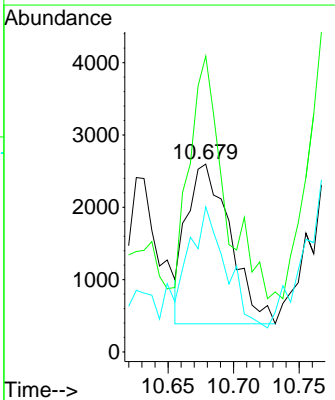


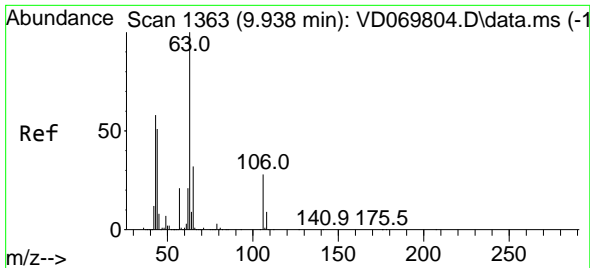
#56  
 Ethyl methacrylate  
 Concen: 4.359 ug/l  
 RT: 10.679 min Scan# 1489  
 Delta R.T. 0.024 min  
 Lab File: VD070013.D  
 Acq: 09 Aug 2021 23:11



Tgt Ion: 69 Resp: 5093

Ion	Ratio	Lower	Upper
69	100		
41	123.7	50.2	75.2#
39	71.3	22.0	33.0#

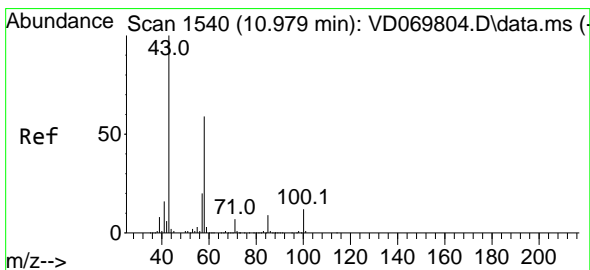
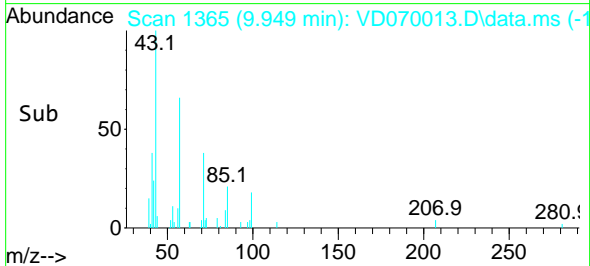
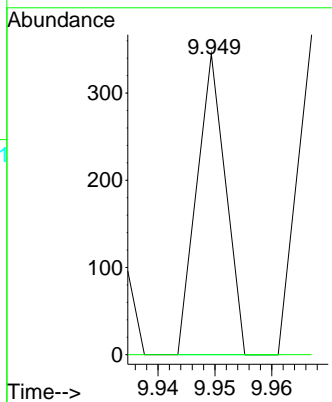
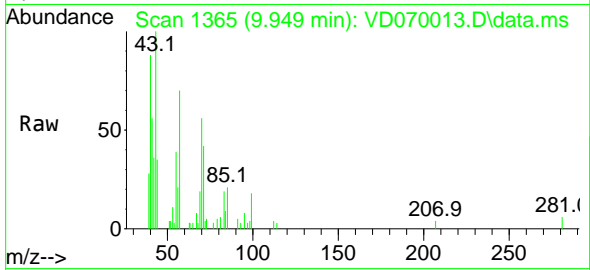




#58  
 2-Chloroethyl Vinyl ether  
 Concen: 20.895 ug/l  
 RT: 9.949 min Scan# 1365  
 Delta R.T. 0.011 min  
 Lab File: VD070013.D  
 Acq: 09 Aug 2021 23:11

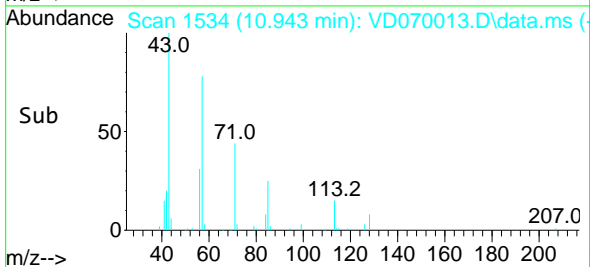
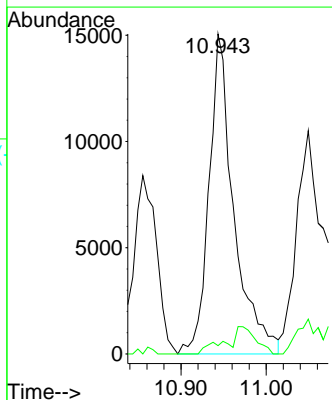
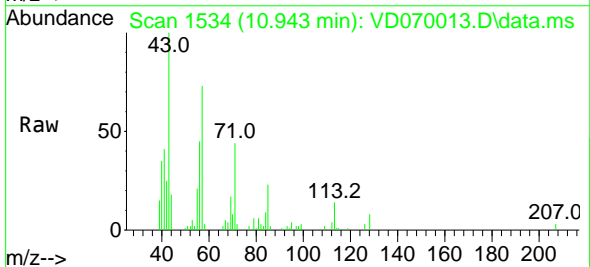
Instrument :  
 MSVOA\_D  
 ClientSampled :

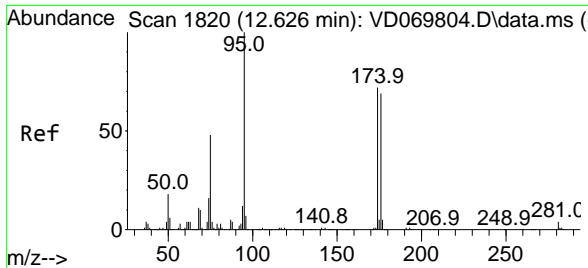
Tgt Ion: 63 Resp: 122  
 Ion Ratio Lower Upper  
 63 100  
 106 0.0 21.8 32.6#



#59  
 2-Hexanone  
 Concen: 8.763 ug/l  
 RT: 10.943 min Scan# 1534  
 Delta R.T. -0.036 min  
 Lab File: VD070013.D  
 Acq: 09 Aug 2021 23:11

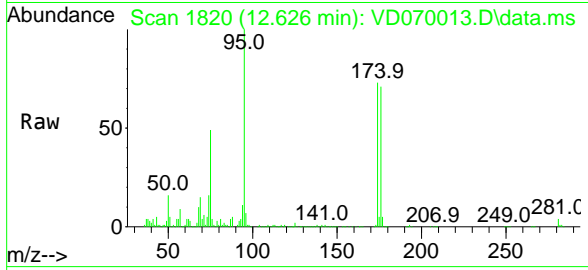
Tgt Ion: 43 Resp: 30567  
 Ion Ratio Lower Upper  
 43 100  
 58 1.9 29.4 88.3#





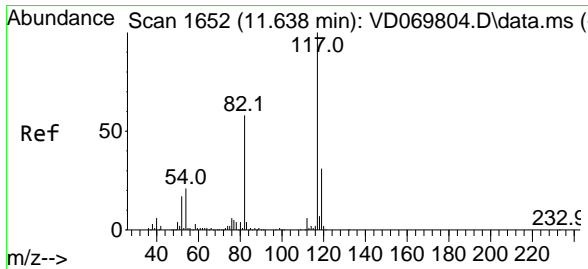
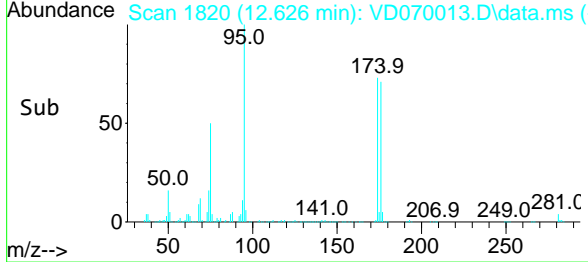
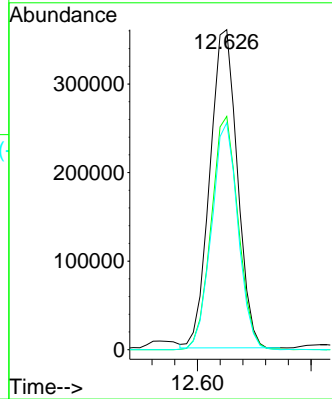
#62  
 4-Bromofluorobenzene  
 Concen: 51.697 ug/l  
 RT: 12.626 min Scan# 1820  
 Delta R.T. -0.000 min  
 Lab File: VD070013.D  
 Acq: 09 Aug 2021 23:11

Instrument :  
 MSVOA\_D  
 ClientSampled :

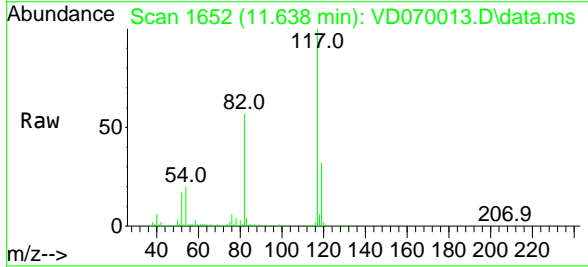


Tgt Ion: 95 Resp: 604054

Ion	Ratio	Lower	Upper
95	100		
174	72.1	0.0	142.6
176	68.6	0.0	134.2

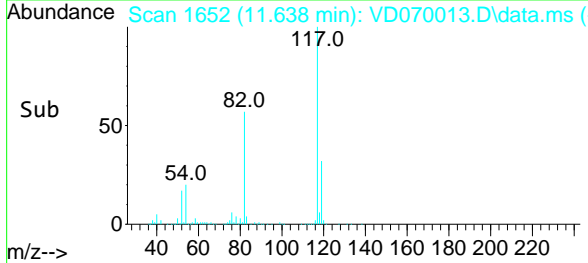
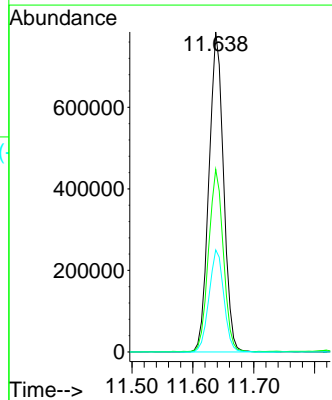


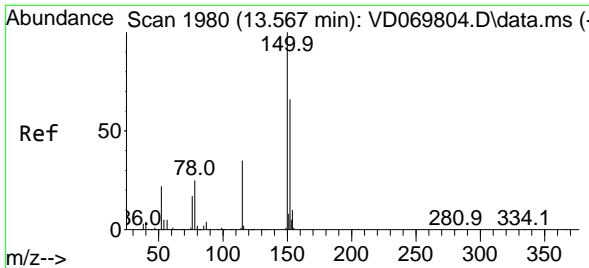
#63  
 Chlorobenzene-d5  
 Concen: 50.000 ug/l  
 RT: 11.638 min Scan# 1652  
 Delta R.T. -0.000 min  
 Lab File: VD070013.D  
 Acq: 09 Aug 2021 23:11



Tgt Ion: 117 Resp: 1306726

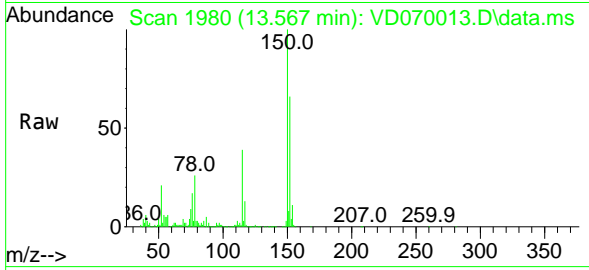
Ion	Ratio	Lower	Upper
117	100		
82	56.9	46.3	69.5
119	31.9	24.7	37.1



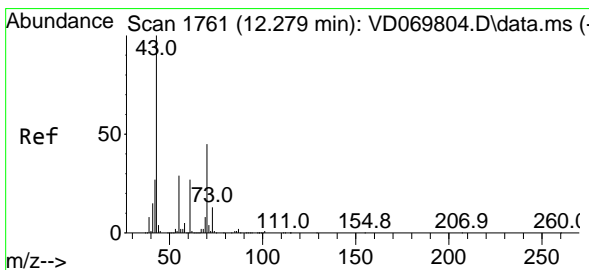
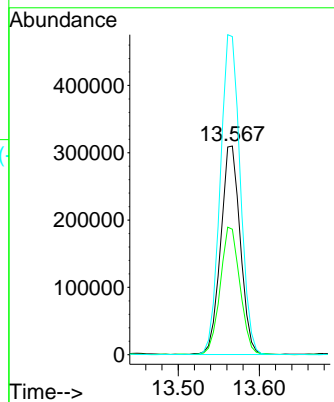
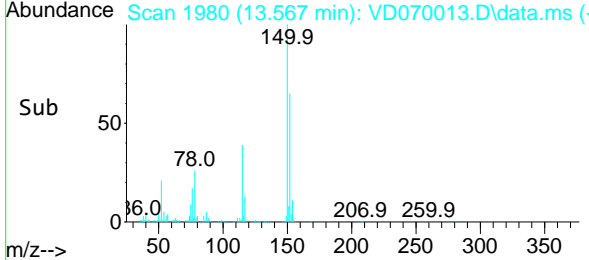


#72  
 1,4-Dichlorobenzene-d4  
 Concen: 50.000 ug/l  
 RT: 13.567 min Scan# 1980  
 Delta R.T. -0.000 min  
 Lab File: VD070013.D  
 Acq: 09 Aug 2021 23:11

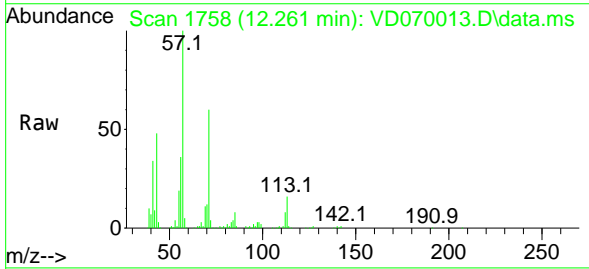
Instrument :  
 MSVOA\_D  
 ClientSampled :



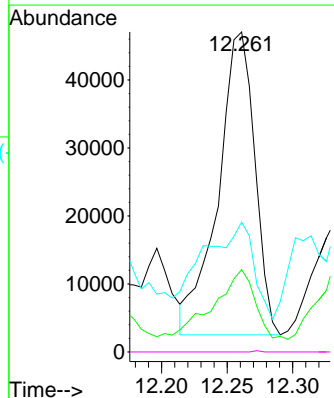
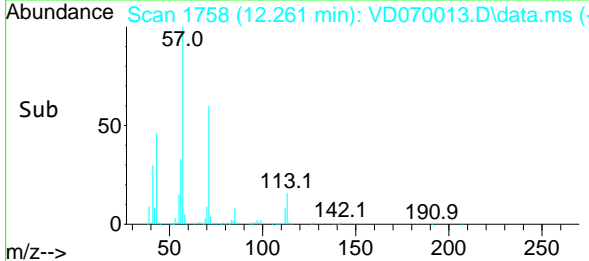
Tgt Ion:152 Resp: 519263  
 Ion Ratio Lower Upper  
 152 100  
 115 62.0 31.1 93.3  
 150 156.3 0.0 343.0



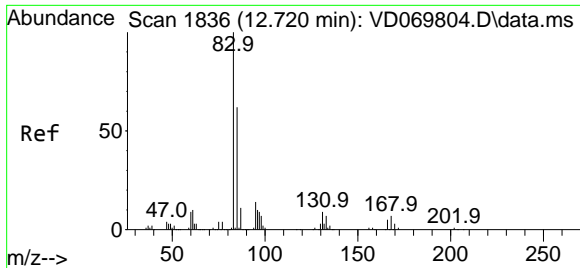
#74  
 N-amy1 acetate  
 Concen: 11.324 ug/l  
 RT: 12.261 min Scan# 1758  
 Delta R.T. -0.018 min  
 Lab File: VD070013.D  
 Acq: 09 Aug 2021 23:11



Tgt Ion: 43 Resp: 86901  
 Ion Ratio Lower Upper  
 43 100  
 70 26.2 37.9 56.9#  
 55 45.8 23.7 35.5#  
 61 0.1 20.9 31.3#



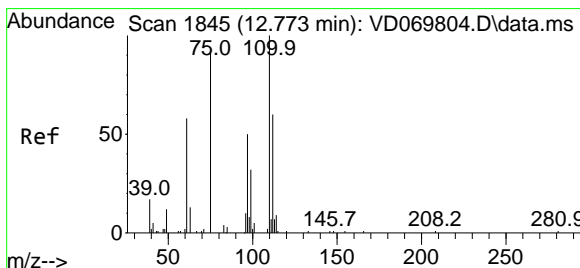
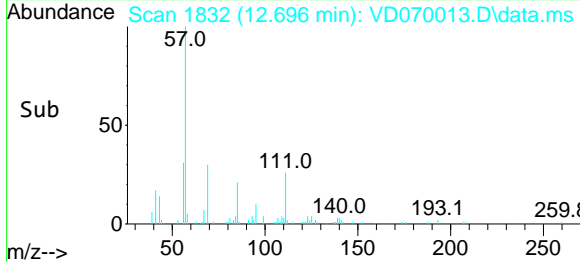
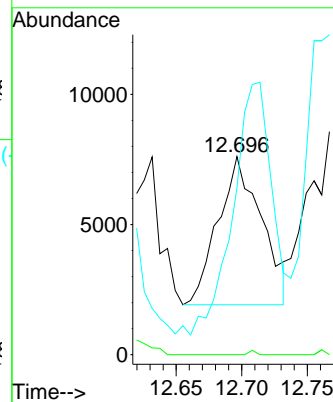
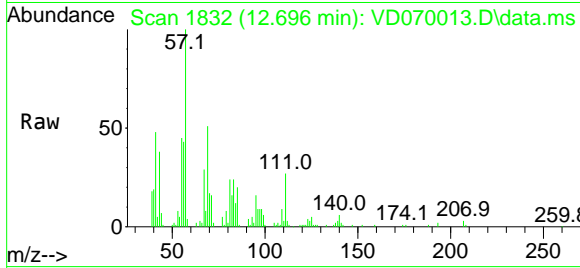




#75  
 1,1,2,2-Tetrachloroethane  
 Concen: 1.762 ug/l  
 RT: 12.696 min Scan# 1832  
 Delta R.T. -0.024 min  
 Lab File: VD070013.D  
 Acq: 09 Aug 2021 23:11

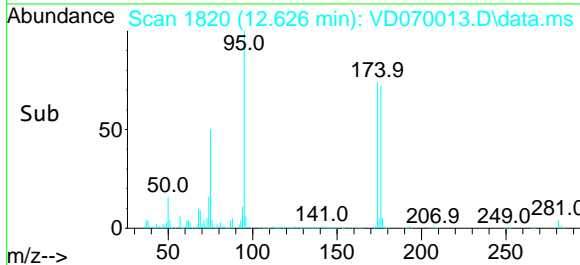
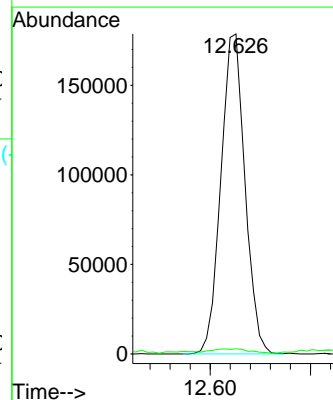
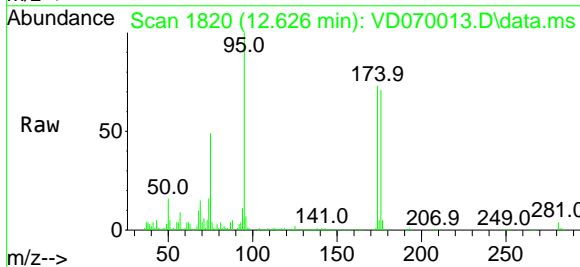
Instrument :  
 MSVOA\_D  
 ClientSampled :

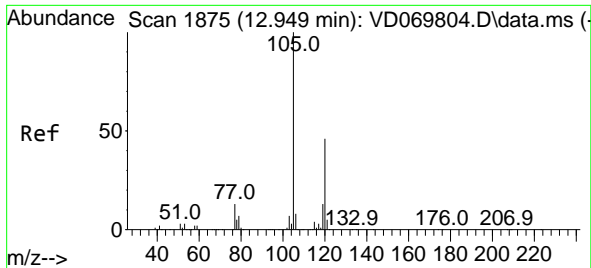
Tgt Ion	Resp	Lower	Upper
83	13127		
131	0.4	4.9	14.6#
85	157.2	31.8	95.4#



#76  
 1,2,3-Trichloropropane  
 Concen: 53.968 ug/l  
 RT: 12.626 min Scan# 1820  
 Delta R.T. -0.147 min  
 Lab File: VD070013.D  
 Acq: 09 Aug 2021 23:11

Tgt Ion	Resp	Lower	Upper
75	297869		
75	100		
77	2.0	181.5	544.5#

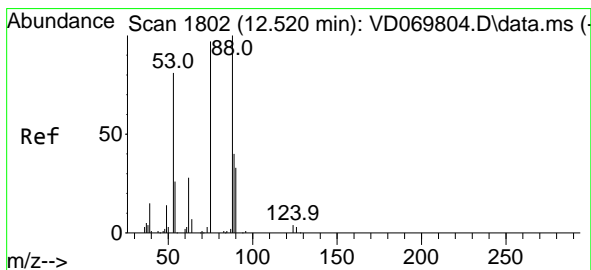
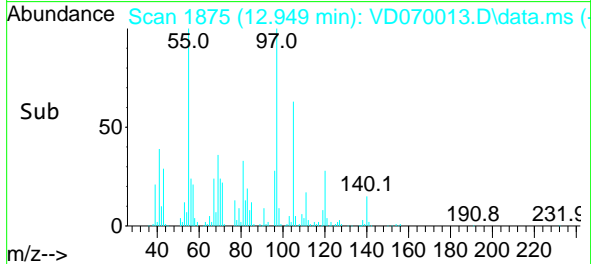
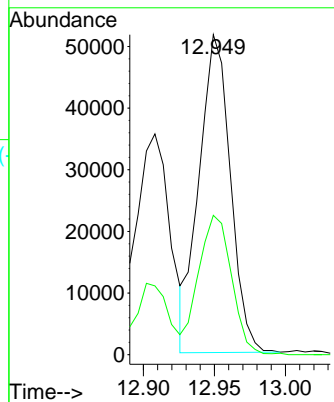
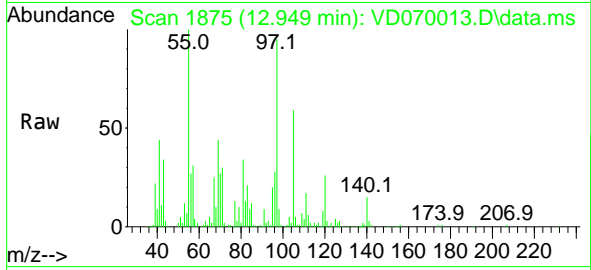




#80  
 1,3,5-Trimethylbenzene  
 Concen: 2.478 ug/l  
 RT: 12.949 min Scan# 1875  
 Delta R.T. -0.000 min  
 Lab File: VD070013.D  
 Acq: 09 Aug 2021 23:11

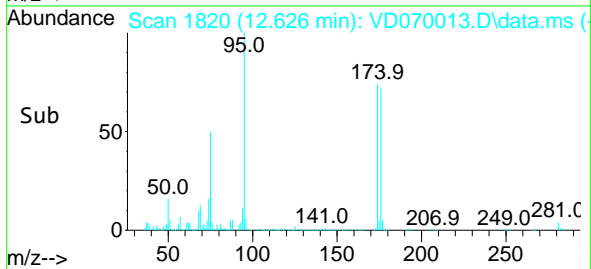
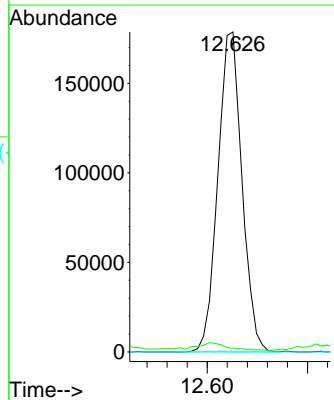
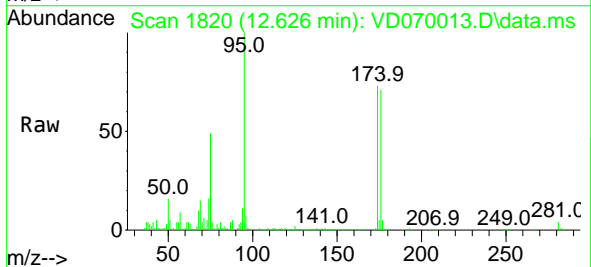
Instrument :  
 MSVOA\_D  
 ClientSampled :

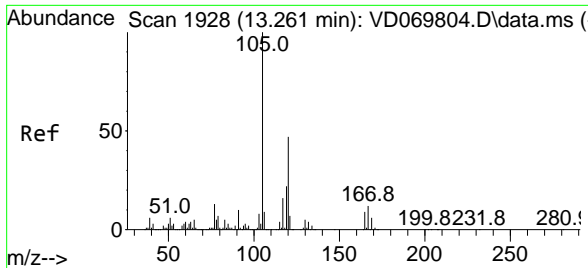
Tgt Ion:105 Resp: 79092  
 Ion Ratio Lower Upper  
 105 100  
 120 46.4 23.8 71.2



#81  
 trans-1,4-Dichloro-2-butene  
 Concen: 163.724 ug/l  
 RT: 12.626 min Scan# 1820  
 Delta R.T. 0.106 min  
 Lab File: VD070013.D  
 Acq: 09 Aug 2021 23:11

Tgt Ion: 75 Resp: 297869  
 Ion Ratio Lower Upper  
 75 100  
 53 0.0 67.2 100.8#  
 89 0.1 35.8 53.6#

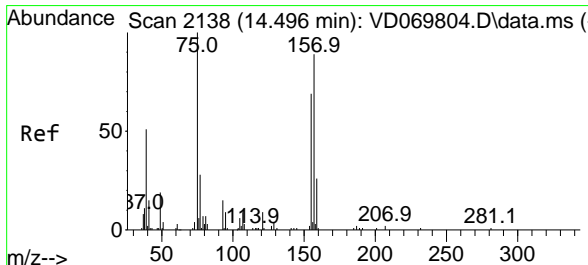
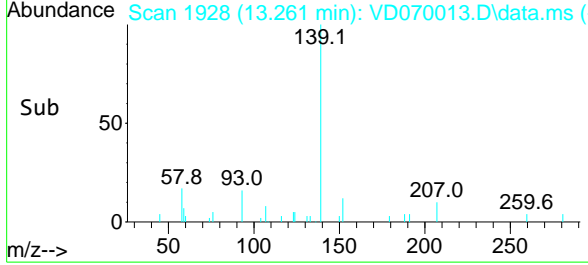
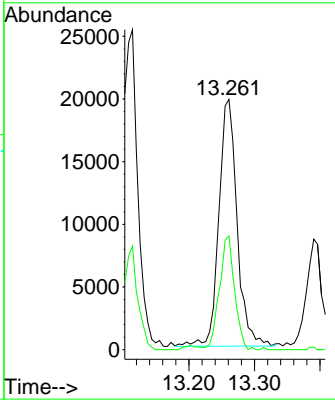
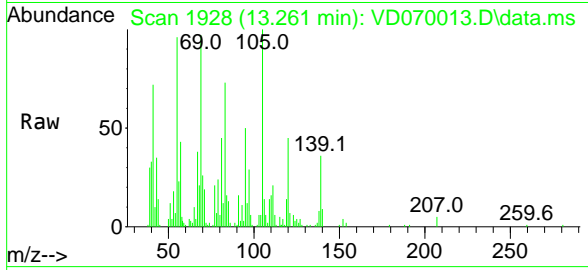




#84  
 1,2,4-Trimethylbenzene  
 Concen: 1.205 ug/l  
 RT: 13.261 min Scan# 1928  
 Delta R.T. -0.000 min  
 Lab File: VD070013.D  
 Acq: 09 Aug 2021 23:11

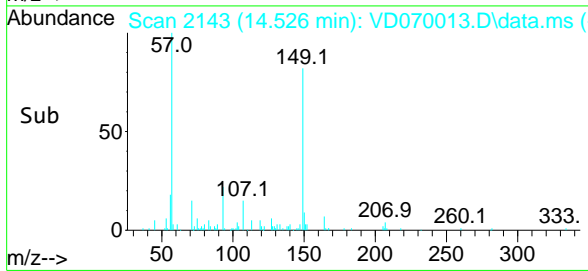
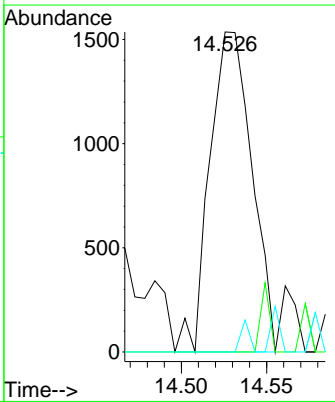
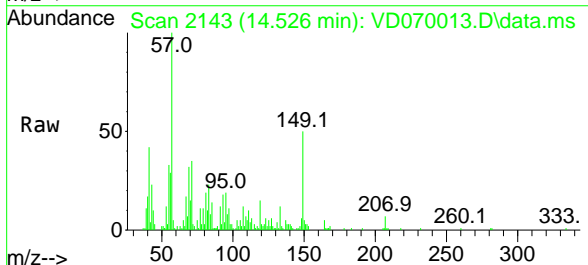
Instrument : MSVOA\_D  
 ClientSampled :

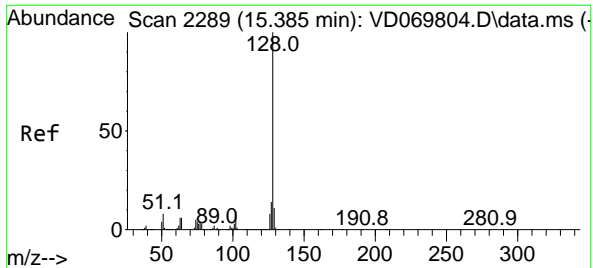
Tgt Ion:105 Resp: 37946  
 Ion Ratio Lower Upper  
 105 100  
 120 38.3 22.6 67.8



#92  
 1,2-Dibromo-3-Chloropropane  
 Concen: 2.467 ug/l  
 RT: 14.526 min Scan# 2143  
 Delta R.T. 0.029 min  
 Lab File: VD070013.D  
 Acq: 09 Aug 2021 23:11

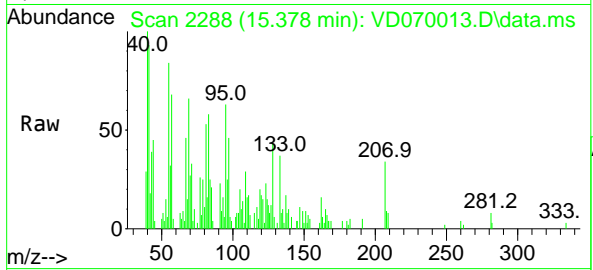
Tgt Ion: 75 Resp: 2647  
 Ion Ratio Lower Upper  
 75 100  
 155 0.0 36.3 108.9#  
 157 2.0 47.0 141.0#





#95  
 Naphthalene  
 Concen: 5.297 ug/l  
 RT: 15.378 min Scan# 2288  
 Delta R.T. -0.007 min  
 Lab File: VD070013.D  
 Acq: 09 Aug 2021 23:11

Instrument :  
 MSVOA\_D  
 ClientSampled :



Tgt Ion:128 Resp: 5629

Ion	Ratio	Lower	Upper
128	100		
127	25.9	10.6	16.0#
129	4.4	8.6	12.8#

