

Data Path : Z:\voasrv\HPCHEM1\MSVOA_D\Data\VD080921\
 Data File : VD069999.D
 Acq On : 09 Aug 2021 16:29
 Operator : VA/SY
 Sample : M3305-01RE
 Misc : 5.08G/5.00ml/MSVOA_D/SOIL
 ALS Vial : 7 Sample Multiplier: 1

Instrument :
 MSVOA_D
 ClientSampleId :
 SA-01-080521RE

Quant Time: Aug 10 07:04:02 2021
 Quant Method : Z:\voasrv\HPCHEM1\MSVOA_D\Method\82D072221S.M
 Quant Title : SW846 8260
 QLast Update : Fri Jul 23 04:51:13 2021
 Response via : Initial Calibration

Compound	R.T.	QIon	Response	Conc	Units	Dev(Min)

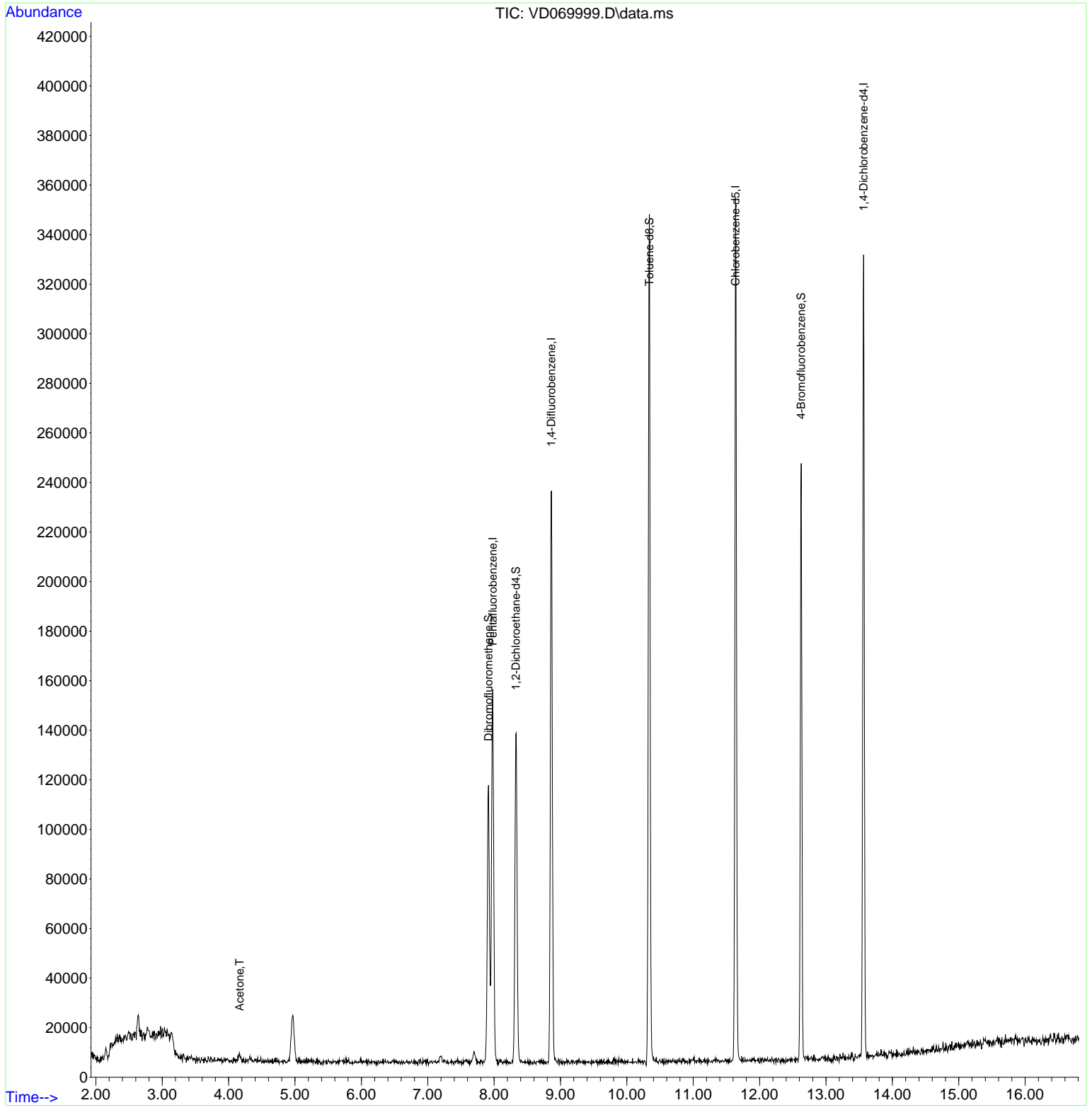
Internal Standards						
1) Pentafluorobenzene	7.979	168	104417	50.000	ug/l	0.00
34) 1,4-Difluorobenzene	8.861	114	194356	50.000	ug/l	0.00
63) Chlorobenzene-d5	11.638	117	199074	50.000	ug/l	0.00
72) 1,4-Dichlorobenzene-d4	13.567	152	84627	50.000	ug/l	0.00
System Monitoring Compounds						
33) 1,2-Dichloroethane-d4	8.326	65	108664	90.486	ug/l	0.00
Spiked Amount	50.000	Range	50 - 163	Recovery	=	180.980%#
35) Dibromofluoromethane	7.914	113	79893	65.207	ug/l	0.00
Spiked Amount	50.000	Range	54 - 147	Recovery	=	130.420%
50) Toluene-d8	10.338	98	243703	51.584	ug/l	0.00
Spiked Amount	50.000	Range	49 - 140	Recovery	=	103.160%
62) 4-Bromofluorobenzene	12.626	95	83209	52.701	ug/l	0.00
Spiked Amount	50.000	Range	25 - 144	Recovery	=	105.400%
Target Compounds						
16) Acetone	4.168	43	5435	25.053	ug/l	90

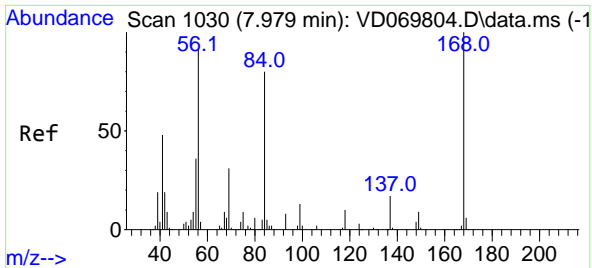
(#) = qualifier out of range (m) = manual integration (+) = signals summed

Data Path : Z:\voasrv\HPCHEM1\MSVOA_D\Data\VD080921\
 Data File : VD069999.D
 Acq On : 09 Aug 2021 16:29
 Operator : VA/SY
 Sample : M3305-01RE
 Misc : 5.08G/5.00ml/MSVOA_D/SOIL
 ALS Vial : 7 Sample Multiplier: 1

Instrument :
 MSVOA_D
ClientSampled :
 SA-01-080521RE

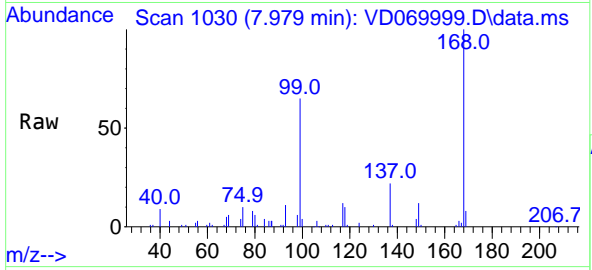
Quant Time: Aug 10 07:04:02 2021
 Quant Method : Z:\voasrv\HPCHEM1\MSVOA_D\Method\82D072221S.M
 Quant Title : SW846 8260
 QLast Update : Fri Jul 23 04:51:13 2021
 Response via : Initial Calibration



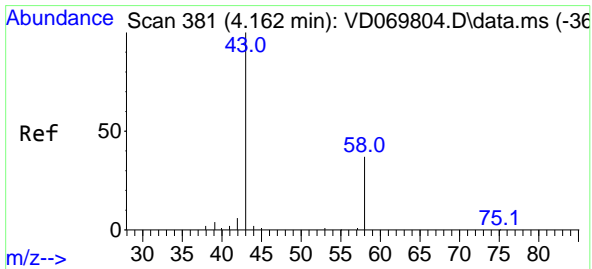
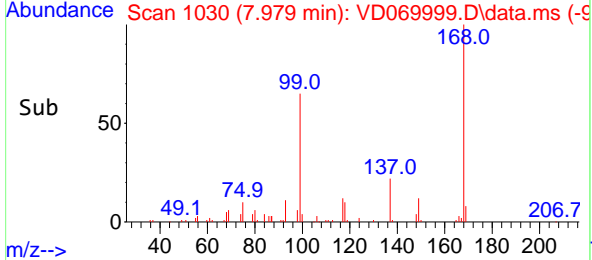
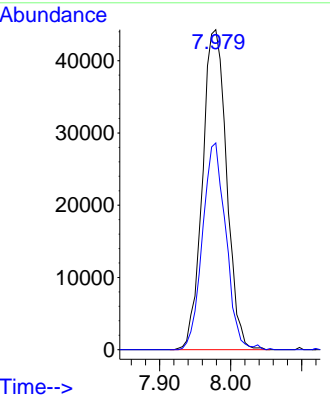


#1
 Pentafluorobenzene
 Concen: 50.000 ug/l
 RT: 7.979 min Scan# 1030
 Delta R.T. 0.000 min
 Lab File: VD069999.D
 Acq: 09 Aug 2021 16:29

Instrument :
 MSVOA_D
 ClientSampled :
 SA-01-080521RE

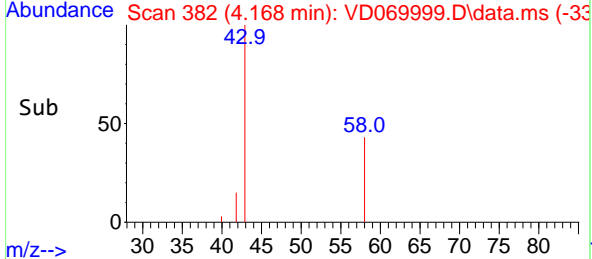
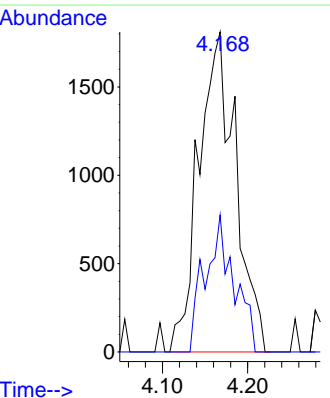
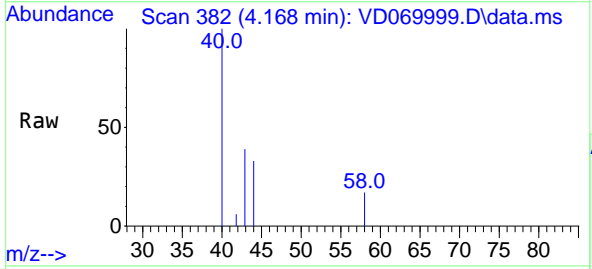


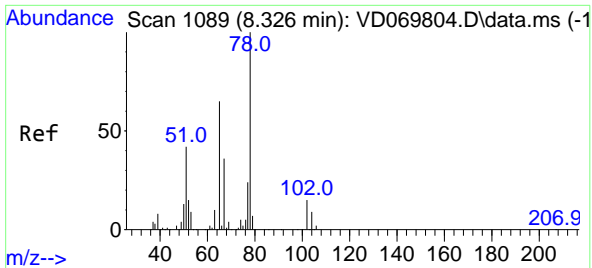
Tgt Ion:168 Resp: 104417
 Ion Ratio Lower Upper
 168 100
 99 64.6 51.1 76.7



#16
 Acetone
 Concen: 25.053 ug/l
 RT: 4.168 min Scan# 382
 Delta R.T. 0.006 min
 Lab File: VD069999.D
 Acq: 09 Aug 2021 16:29

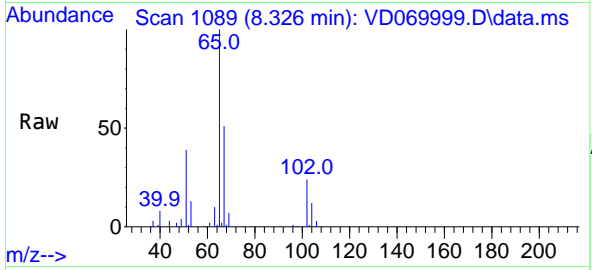
Tgt Ion: 43 Resp: 5435
 Ion Ratio Lower Upper
 43 100
 58 42.8 29.4 44.0



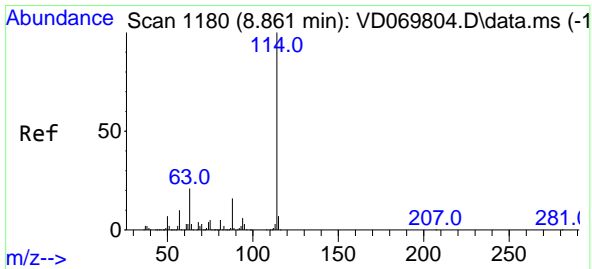
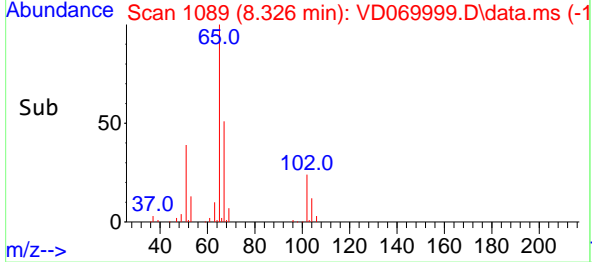
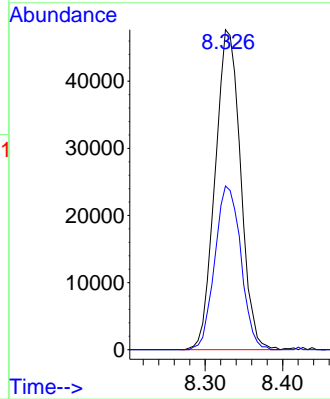


#33
 1,2-Dichloroethane-d4
 Concen: 90.486 ug/l
 RT: 8.326 min Scan# 1089
 Delta R.T. -0.000 min
 Lab File: VD069999.D
 Acq: 09 Aug 2021 16:29

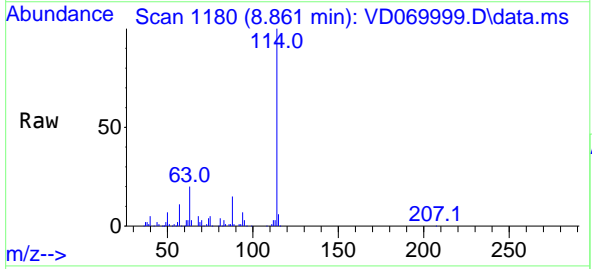
Instrument :
 MSVOA_D
 ClientSampled :
 SA-01-080521RE



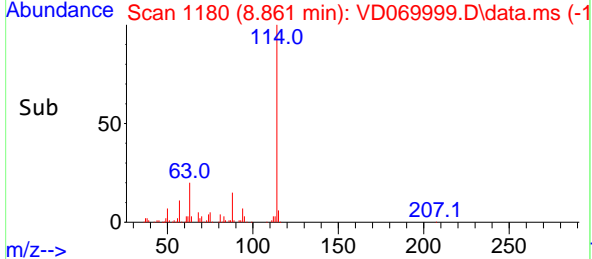
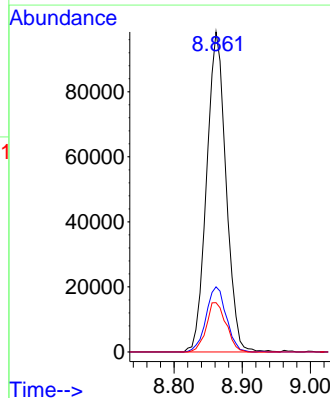
Tgt Ion: 65 Resp: 108664
 Ion Ratio Lower Upper
 65 100
 67 52.3 0.0 111.2

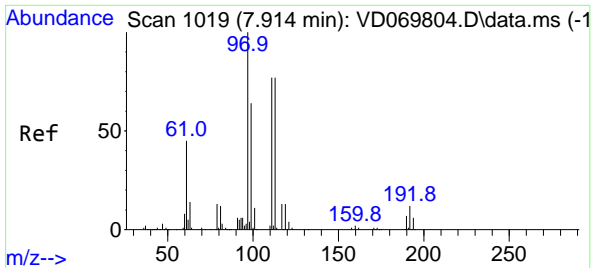


#34
 1,4-Difluorobenzene
 Concen: 50.000 ug/l
 RT: 8.861 min Scan# 1180
 Delta R.T. 0.000 min
 Lab File: VD069999.D
 Acq: 09 Aug 2021 16:29



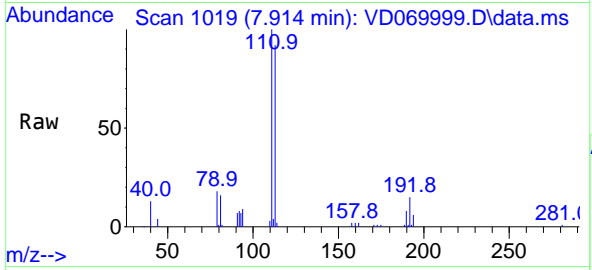
Tgt Ion: 114 Resp: 194356
 Ion Ratio Lower Upper
 114 100
 63 20.4 0.0 41.6
 88 15.4 0.0 31.4



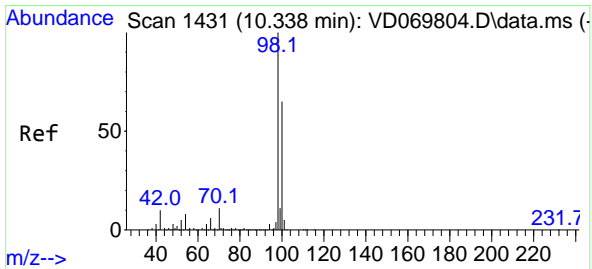
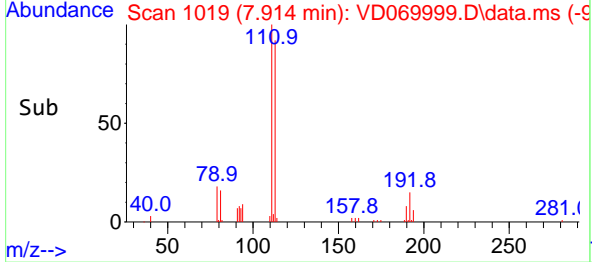
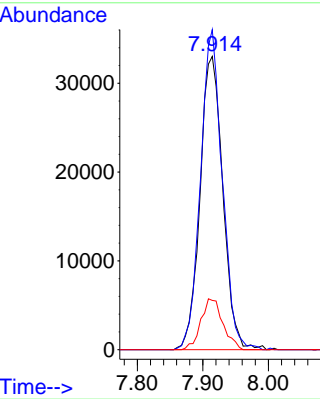


#35
 Dibromofluoromethane
 Concen: 65.207 ug/l
 RT: 7.914 min Scan# 1019
 Delta R.T. -0.000 min
 Lab File: VD069999.D
 Acq: 09 Aug 2021 16:29

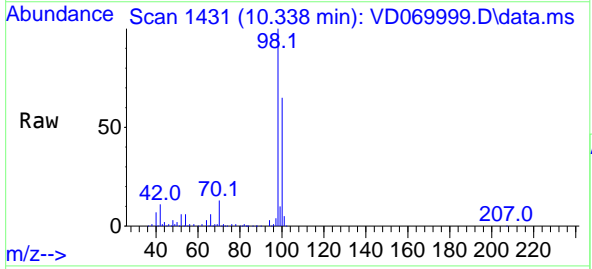
Instrument :
 MSVOA_D
 ClientSampleId :
 SA-01-080521RE



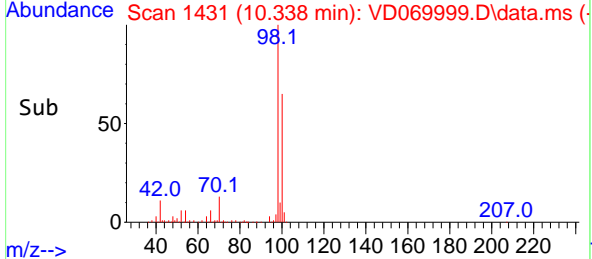
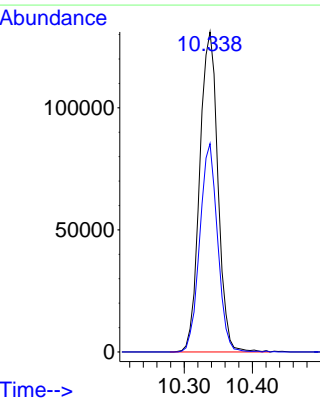
Tgt Ion:113 Resp: 79893
 Ion Ratio Lower Upper
 113 100
 111 104.1 80.5 120.7
 192 16.7 12.6 19.0

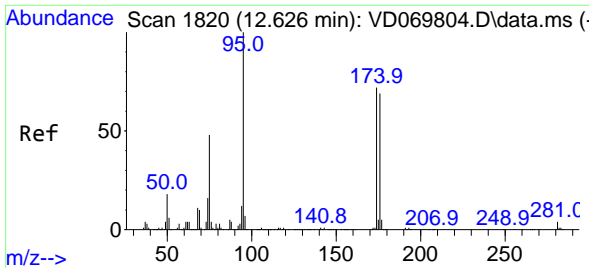


#50
 Toluene-d8
 Concen: 51.584 ug/l
 RT: 10.338 min Scan# 1431
 Delta R.T. -0.000 min
 Lab File: VD069999.D
 Acq: 09 Aug 2021 16:29



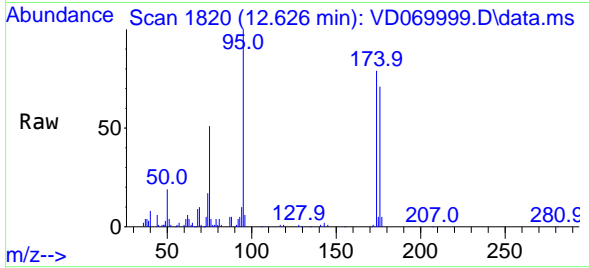
Tgt Ion: 98 Resp: 243703
 Ion Ratio Lower Upper
 98 100
 100 63.7 51.9 77.9



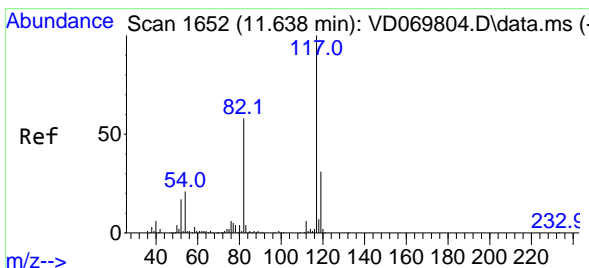
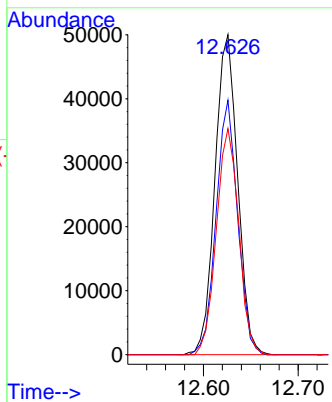
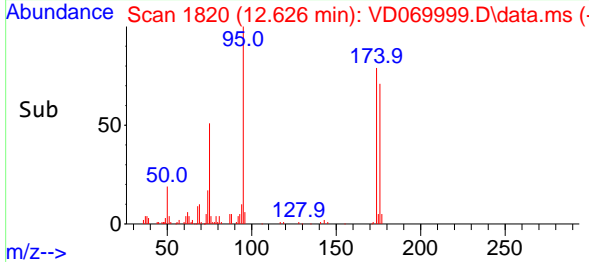


#62
 4-Bromofluorobenzene
 Concen: 52.701 ug/l
 RT: 12.626 min Scan# 1820
 Delta R.T. -0.000 min
 Lab File: VD069999.D
 Acq: 09 Aug 2021 16:29

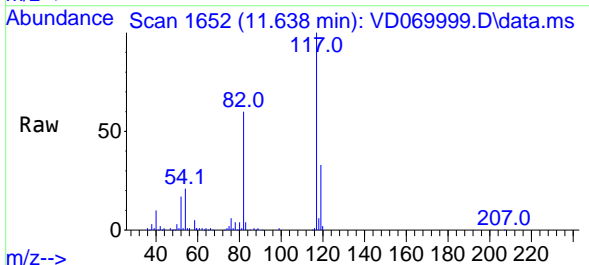
Instrument :
 MSVOA_D
Client Sampled :
 SA-01-080521RE



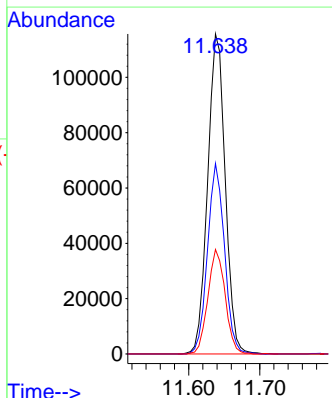
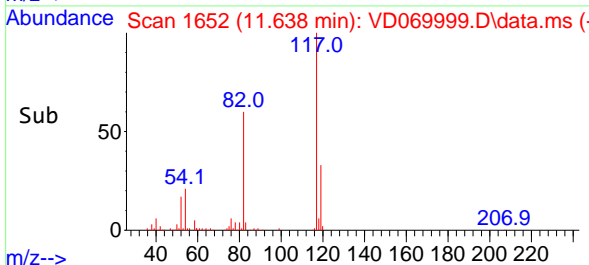
Tgt Ion: 95 Resp: 83209
 Ion Ratio Lower Upper
 95 100
 174 75.7 0.0 142.6
 176 69.7 0.0 134.2

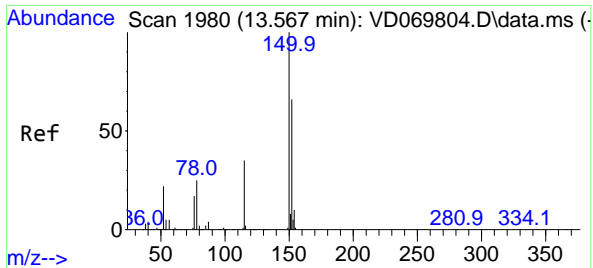


#63
 Chlorobenzene-d5
 Concen: 50.000 ug/l
 RT: 11.638 min Scan# 1652
 Delta R.T. -0.000 min
 Lab File: VD069999.D
 Acq: 09 Aug 2021 16:29



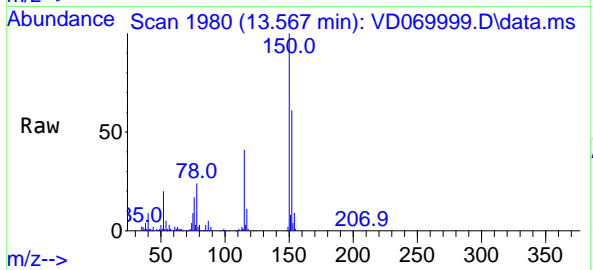
Tgt Ion: 117 Resp: 199074
 Ion Ratio Lower Upper
 117 100
 82 59.5 46.3 69.5
 119 32.7 24.7 37.1





#72
 1,4-Dichlorobenzene-d4
 Concen: 50.000 ug/l
 RT: 13.567 min Scan# 1980
 Delta R.T. -0.000 min
 Lab File: VD069999.D
 Acq: 09 Aug 2021 16:29

Instrument :
 MSVOA_D
 ClientSampled :
 SA-01-080521RE



Tgt Ion:152 Resp: 84627

Ion	Ratio	Lower	Upper
152	100		
115	66.0	31.1	93.3
150	160.4	0.0	343.0

