

Data Path : Z:\voasrv\HPCHEM1\MSVOA_D\Data\VD081023\
 Data File : VD076970.D
 Acq On : 10 Aug 2023 18:49
 Operator : JC/SY
 Sample : 03965-14
 Misc : 5.40G/10.0ml/MSVOA_D/SOIL
 ALS Vial : 15 Sample Multiplier: 1

Instrument :
 MSVOA_D
 ClientSampleId :
 A48K6

Integration Parameters: LSCINT.P

Integrator: RTE
 Smoothing : OFF
 Sampling : 1
 Start Thrs : 0.2
 Stop Thrs : 0

Filtering: 5
 Min Area: 0 % of largest Peak
 Max Peaks: 100
 Peak Location: TOP

If leading or trailing edge < 100 prefer < Baseline drop else tangent >
 Peak separation: 5

Method : Z:\voasrv\HPCHEM1\MSVOA_D\Method\SFAMDLM080323SMA.M
 Title : SFAM01.0

Signal : TIC: VD076970.D\data.ms

peak #	R.T. min	first scan	max scan	last scan	PK TY	peak height	corr. area	corr. % max.	% of total
1	1.740	12	26	35	rBV	411027	765697	80.37%	9.663%
2	2.146	91	95	96	rBV2	2737	2878	0.30%	0.036%
3	2.270	110	116	123	rBV	151138	225640	23.68%	2.848%
4	2.793	199	205	216	rVB	128270	244516	25.66%	3.086%
5	3.440	313	315	317	rBV	889	654	0.07%	0.008%
6	3.587	339	340	343	rVB2	1151	680	0.07%	0.009%
7	3.734	362	365	367	rBV	595	743	0.08%	0.009%
8	3.911	386	395	406	rBV2	116399	303535	31.86%	3.831%
9	4.017	409	413	415	rBV2	5508	8038	0.84%	0.101%
10	4.199	440	444	446	rBV	833	1256	0.13%	0.016%
11	4.264	453	455	459	rBV	1040	1022	0.11%	0.013%
12	4.399	474	478	480	rBV	754	649	0.07%	0.008%
13	4.605	510	513	515	rBV2	473	627	0.07%	0.008%
14	4.658	520	522	526	rVV2	932	720	0.08%	0.009%
15	4.758	533	539	541	rBV4	1090	1623	0.17%	0.020%
16	4.893	554	562	573	rVB6	5387	17225	1.81%	0.217%
17	4.981	573	577	582	rVB2	939	1628	0.17%	0.021%
18	5.152	603	606	607	rBV2	846	641	0.07%	0.008%
19	5.652	687	691	693	rBV3	649	910	0.10%	0.011%
20	5.675	693	695	697	rVV2	1042	1043	0.11%	0.013%
21	5.699	697	699	701	rVB	736	620	0.07%	0.008%
22	5.752	703	708	709	rBV	829	1051	0.11%	0.013%
23	5.787	712	714	716	rVB2	892	860	0.09%	0.011%
24	5.881	726	730	734	rBV2	920	1530	0.16%	0.019%
25	5.952	739	742	745	rBV	682	792	0.08%	0.010%
26	6.087	761	765	767	rBV2	542	743	0.08%	0.009%
27	6.146	772	775	776	rBV	629	630	0.07%	0.008%
28	6.299	799	801	805	rBV2	424	630	0.07%	0.008%
29	6.405	818	819	822	rBV2	744	735	0.08%	0.009%
30	6.511	834	837	839	rBV	946	1075	0.11%	0.014%
31	6.616	853	855	859	rVB2	561	647	0.07%	0.008%
32	6.652	859	861	864	rBV	903	814	0.09%	0.010%
33	6.834	887	892	893	rBV2	910	1150	0.12%	0.015%
34	6.981	908	917	928	rBV	26718	73803	7.75%	0.931%
35	7.299	969	971	974	rVB2	792	728	0.08%	0.009%
36	7.334	974	977	979	rBV2	688	688	0.07%	0.009%

Data Path : Z:\voasrv\HPCHEM1\MSVOA_D\Data\VD081023\
 Data File : VD076970.D
 Acq On : 10 Aug 2023 18:49
 Operator : JC/SY
 Sample : 03965-14
 Misc : 5.40G/10.0ml/MSVOA_D/SOIL
 ALS Vial : 15 Sample Multiplier: 1

Instrument :
 MSVOA_D
 ClientSampleId :
 A48K6

Integration Parameters: LSCINT.P

Integrator: RTE
 Smoothing : OFF
 Sampling : 1
 Start Thrs : 0.2
 Stop Thrs : 0

Filtering: 5
 Min Area: 0 % of largest Peak
 Max Peaks: 100
 Peak Location: TOP

If leading or trailing edge < 100 prefer < Baseline drop else tangent >
 Peak separation: 5

Method : Z:\voasrv\HPCHEM1\MSVOA_D\Method\SFAMDLM080323SMA.M
 Title : SFAM01.0

37	7.381	981	985	990	rBV	965	1798	0.19%	0.023%
38	7.563	1006	1016	1027	rBV	167902	415357	43.60%	5.242%
39	7.816	1056	1059	1061	rBV2	596	857	0.09%	0.011%
40	8.081	1102	1104	1109	rVB2	702	770	0.08%	0.010%
41	8.128	1109	1112	1113	rVB2	663	630	0.07%	0.008%
42	8.199	1113	1124	1142	rBV2	315085	952734	100.00%	12.024%
43	8.352	1148	1150	1152	rVB	945	679	0.07%	0.009%
44	8.434	1160	1164	1166	rVB2	606	861	0.09%	0.011%
45	8.487	1170	1173	1176	rBV2	772	988	0.10%	0.012%
46	8.593	1188	1191	1192	rBV	721	730	0.08%	0.009%
47	8.775	1213	1222	1231	rBV2	279002	574112	60.26%	7.245%
48	8.981	1254	1257	1259	rBV2	1358	1222	0.13%	0.015%
49	9.210	1286	1296	1305	rBV	212586	436451	45.81%	5.508%
50	9.357	1318	1321	1325	rVB2	1014	994	0.10%	0.013%
51	9.428	1331	1333	1338	rVB	696	793	0.08%	0.010%
52	9.475	1340	1341	1344	rBV	865	809	0.08%	0.010%
53	9.504	1344	1346	1349	rVB	883	620	0.07%	0.008%
54	9.604	1359	1363	1368	rVB3	1954	2840	0.30%	0.036%
55	9.640	1368	1369	1374	rVB2	750	868	0.09%	0.011%
56	9.857	1405	1406	1409	rBV2	898	611	0.06%	0.008%
57	9.981	1417	1427	1436	rBV	110274	211059	22.15%	2.664%
58	10.269	1466	1476	1485	rBV	473043	831028	87.23%	10.488%
59	10.387	1494	1496	1498	rBV	743	709	0.07%	0.009%
60	10.522	1513	1519	1529	rVV	72638	131152	13.77%	1.655%
61	10.669	1538	1544	1550	rVV4	7163	12777	1.34%	0.161%
62	10.804	1564	1567	1570	rVB2	1904	1679	0.18%	0.021%
63	10.875	1573	1579	1593	rVV	100724	173757	18.24%	2.193%
64	11.128	1619	1622	1624	rBV	1577	1923	0.20%	0.024%
65	11.281	1646	1648	1650	rBV	833	868	0.09%	0.011%
66	11.369	1661	1663	1667	rVB2	2067	1649	0.17%	0.021%
67	11.581	1691	1699	1710	rVB	431141	736751	77.33%	9.298%
68	11.669	1710	1714	1718	rBV3	3298	4596	0.48%	0.058%
69	11.763	1728	1730	1732	rBV2	803	673	0.07%	0.008%
70	11.781	1732	1733	1736	rVV3	1020	1050	0.11%	0.013%
71	12.004	1769	1771	1774	rBV2	726	867	0.09%	0.011%
72	12.040	1775	1777	1781	rVV2	978	990	0.10%	0.012%
73	12.187	1800	1802	1803	rBV	844	799	0.08%	0.010%
74	12.216	1805	1807	1809	rBV2	862	977	0.10%	0.012%
75	12.293	1818	1820	1823	rBV2	621	905	0.09%	0.011%
76	12.375	1831	1834	1835	rBV2	1007	997	0.10%	0.013%

Data Path : Z:\voasrv\HPCHEM1\MSVOA_D\Data\VD081023\
 Data File : VD076970.D
 Acq On : 10 Aug 2023 18:49
 Operator : JC/SY
 Sample : 03965-14
 Misc : 5.40G/10.0ml/MSVOA_D/SOIL
 ALS Vial : 15 Sample Multiplier: 1

Instrument :
 MSVOA_D
 ClientSampleId :
 A48K6

Integration Parameters: LSCINT.P

Integrator: RTE
 Smoothing : OFF Filtering: 5
 Sampling : 1 Min Area: 0 % of largest Peak
 Start Thrs: 0.2 Max Peaks: 100
 Stop Thrs : 0 Peak Location: TOP

If leading or trailing edge < 100 prefer < Baseline drop else tangent >
 Peak separation: 5

Method : Z:\voasrv\HPCHEM1\MSVOA_D\Method\SFAMDLM080323SMA.M
 Title : SFAM01.0

77	12.457	1847	1848	1852	rBV2	768	955	0.10%	0.012%
78	12.575	1860	1868	1873	rVV4	10094	17617	1.85%	0.222%
79	12.651	1873	1881	1889	rVB2	188978	312418	32.79%	3.943%
80	12.804	1905	1907	1909	rBV	1210	714	0.07%	0.009%
81	12.851	1913	1915	1917	rVB2	1308	851	0.09%	0.011%
82	12.887	1919	1921	1923	rBV3	1466	1264	0.13%	0.016%
83	12.998	1936	1940	1946	rVB4	1113	1988	0.21%	0.025%
84	13.040	1946	1947	1949	rBV2	1127	726	0.08%	0.009%
85	13.087	1954	1955	1957	rVB	1460	866	0.09%	0.011%
86	13.122	1959	1961	1962	rBV	1685	865	0.09%	0.011%
87	13.169	1964	1969	1973	rVB3	3921	6918	0.73%	0.087%
88	13.275	1981	1987	1990	rVB5	2398	3611	0.38%	0.046%
89	13.369	2000	2003	2008	rVB4	6653	11158	1.17%	0.141%
90	13.516	2019	2028	2035	rBV	454021	723297	75.92%	9.128%
91	13.734	2060	2065	2068	rBV4	5641	7730	0.81%	0.098%
92	13.816	2072	2079	2086	rBV	393422	638982	67.07%	8.064%
93	14.051	2115	2119	2122	rBV5	4653	6129	0.64%	0.077%
94	14.387	2173	2176	2177	rBV2	1559	1693	0.18%	0.021%
95	14.428	2181	2183	2184	rBV	1129	721	0.08%	0.009%
96	14.675	2221	2225	2227	rBV4	2159	3104	0.33%	0.039%
97	15.734	2403	2405	2408	rBV2	1327	1904	0.20%	0.024%
98	15.928	2436	2438	2442	rBV3	1142	1273	0.13%	0.016%
99	16.092	2464	2466	2468	rBV2	1386	1117	0.12%	0.014%
100	16.634	2554	2558	2560	rBV3	1468	1806	0.19%	0.023%

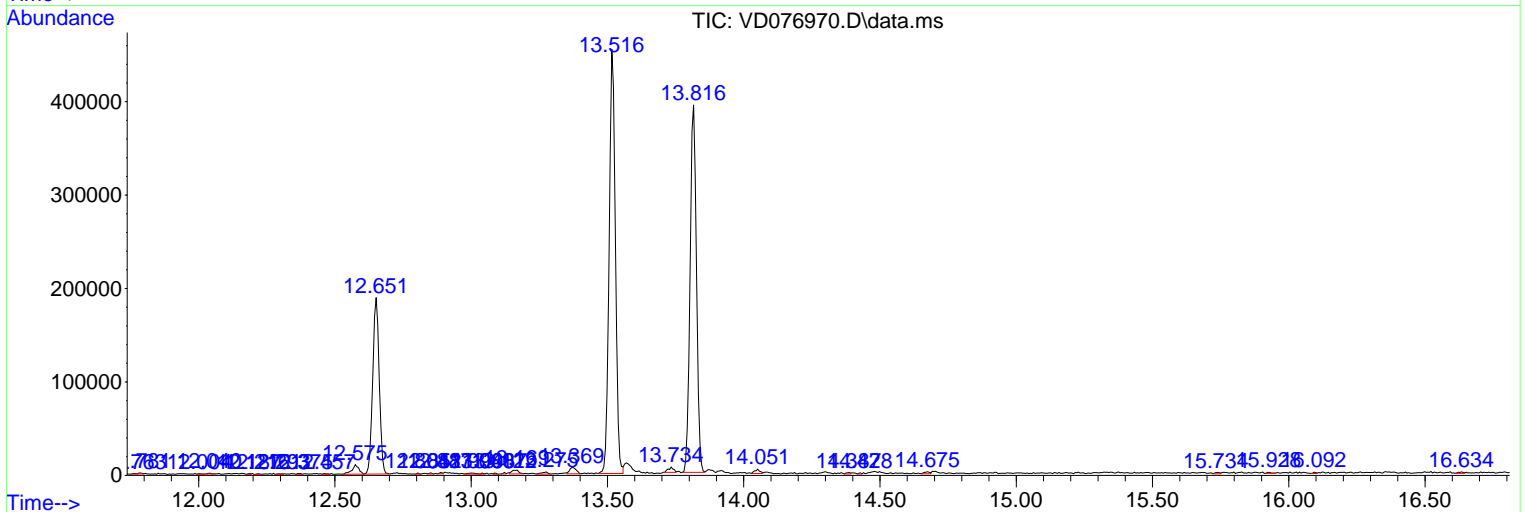
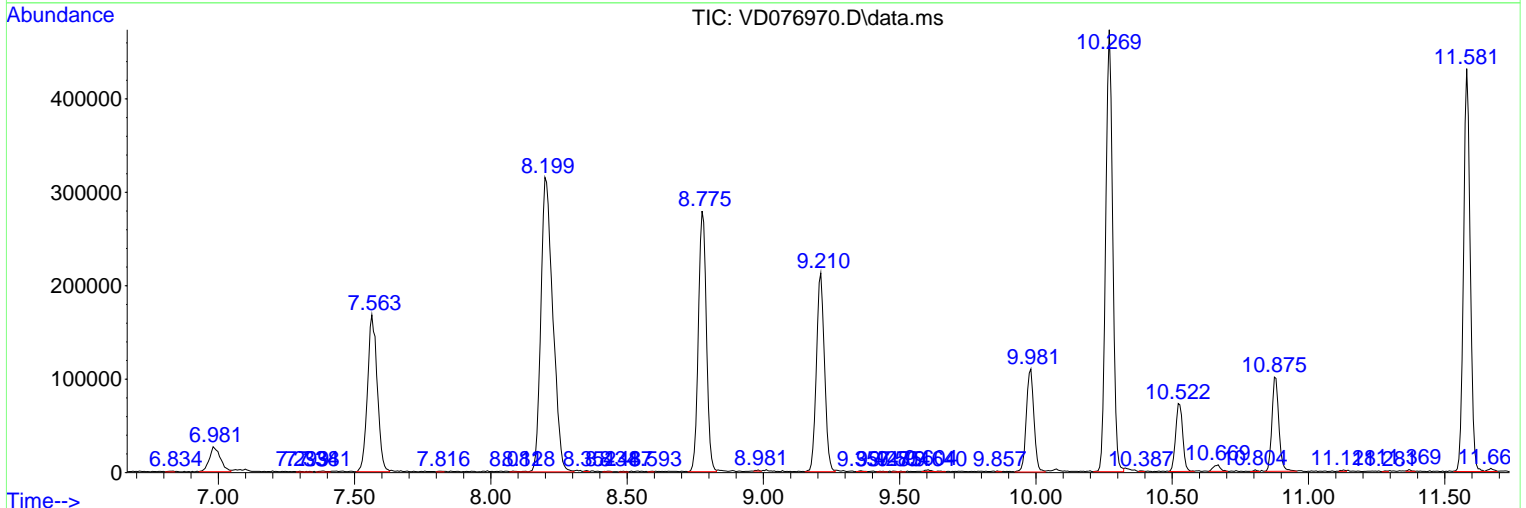
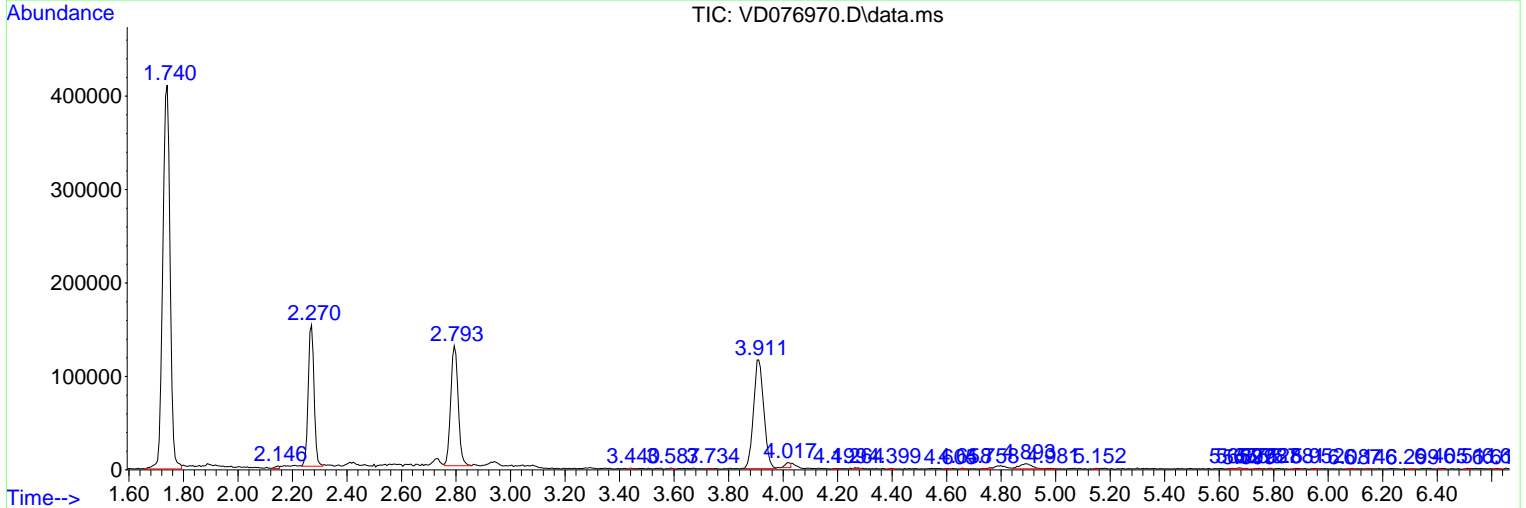
Sum of corrected areas: 7923858

Data Path : Z:\voasrv\HPCHEM1\MSVOA_D\Data\VD081023\
 Data File : VD076970.D
 Acq On : 10 Aug 2023 18:49
 Operator : JC/SY
 Sample : 03965-14
 Misc : 5.40G/10.0ml/MSVOA_D/SOIL
 ALS Vial : 15 Sample Multiplier: 1

Instrument :
 MSVOA_D
ClientSampleId :
 A48K6

Quant Method : Z:\voasrv\HPCHEM1\MSVOA_D\Method\SFAMDLM080323SMA.M
 Quant Title : SFAM01.0

TIC Library : C:\Database\NIST20.L
 TIC Integration Parameters: LSCINT.P



Library Search Compound Report

Data Path : Z:\voasrv\HPCHEM1\MSVOA_D\Data\VD081023\
Data File : VD076970.D
Acq On : 10 Aug 2023 18:49
Operator : JC/SY
Sample : 03965-14
Misc : 5.40G/10.0ml/MSVOA_D/SOIL
ALS Vial : 15 Sample Multiplier: 1

Instrument :
MSVOA_D
ClientSampleId :
A48K6

Quant Method : Z:\voasrv\HPCHEM1\MSVOA_D\Method\SFAMDLM080323SMA.M
Quant Title : SFAM01.0

TIC Library : C:\Database\NIST20.L
TIC Integration Parameters: LSCINT.P

No Library Search Compounds Detected

Data Path : Z:\voasrv\HPCHEM1\MSVOA_D\Data\VD081023\
Data File : VD076970.D
Acq On : 10 Aug 2023 18:49
Operator : JC/SY
Sample : 03965-14
Misc : 5.40G/10.0ml/MSVOA_D/SOIL
ALS Vial : 15 Sample Multiplier: 1

Instrument :
MSVOA_D
ClientSampleId :
A48K6

Quant Method : Z:\voasrv\HPCHEM1\MSVOA_D\Method\SFAMDLM080323SMA.M
Quant Title : SFAM01.0

TIC Library : C:\Database\NIST20.L
TIC Integration Parameters: LSCINT.P

TIC Top Hit name	RT	EstConc	Units	Response	--Internal Standard--		
					#	RT	Resp Conc
