

Data Path : Z:\VOASRV\HPCHEM1\MSVOA_D\DATA\VD081220\
 Data File : VD066205.D
 Acq On : 12 Aug 2020 15:37
 Operator : VA/SY
 Sample : L3652-03
 Misc : 6.68G/5.00ml/MSVOA_D/SOIL
 ALS Vial : 7 Sample Multiplier: 1

Instrument :
 MSVOA_D
 ClientSampleId :
 STOCKPILE-2

Quant Time: Aug 12 16:04:06 2020
 Quant Method : Z:\VOASRV\HPCHEM1\MSVOA_D\METHOD\82D080520S.M
 Quant Title : SW846 8260
 QLast Update : Wed Aug 05 13:49:25 2020
 Response via : Initial Calibration

Internal Standards	R.T.	QIon	Response	Conc	Units	Dev(Min)
1) Pentafluorobenzene	7.97	168	263568	50.00	ug/l	0.00
34) 1,4-Difluorobenzene	8.86	114	407196	50.00	ug/l	0.00
63) Chlorobenzene-d5	11.64	117	365153	50.00	ug/l	0.00
72) 1,4-Dichlorobenzene-d4	13.58	152	197965	50.00	ug/l	0.00

System Monitoring Compounds

33) 1,2-Dichloroethane-d4	8.33	65	135560	57.65	ug/l	0.00
Spiked Amount	50.000		Recovery	=	115.30%	
35) Dibromofluoromethane	7.91	113	133069	51.59	ug/l	0.00
Spiked Amount	50.000		Recovery	=	103.18%	
50) Toluene-d8	10.34	98	418208	43.93	ug/l	0.00
Spiked Amount	50.000		Recovery	=	87.86%	
62) 4-Bromofluorobenzene	12.63	95	168088	48.99	ug/l	0.00
Spiked Amount	50.000		Recovery	=	97.98%	

Target Compounds

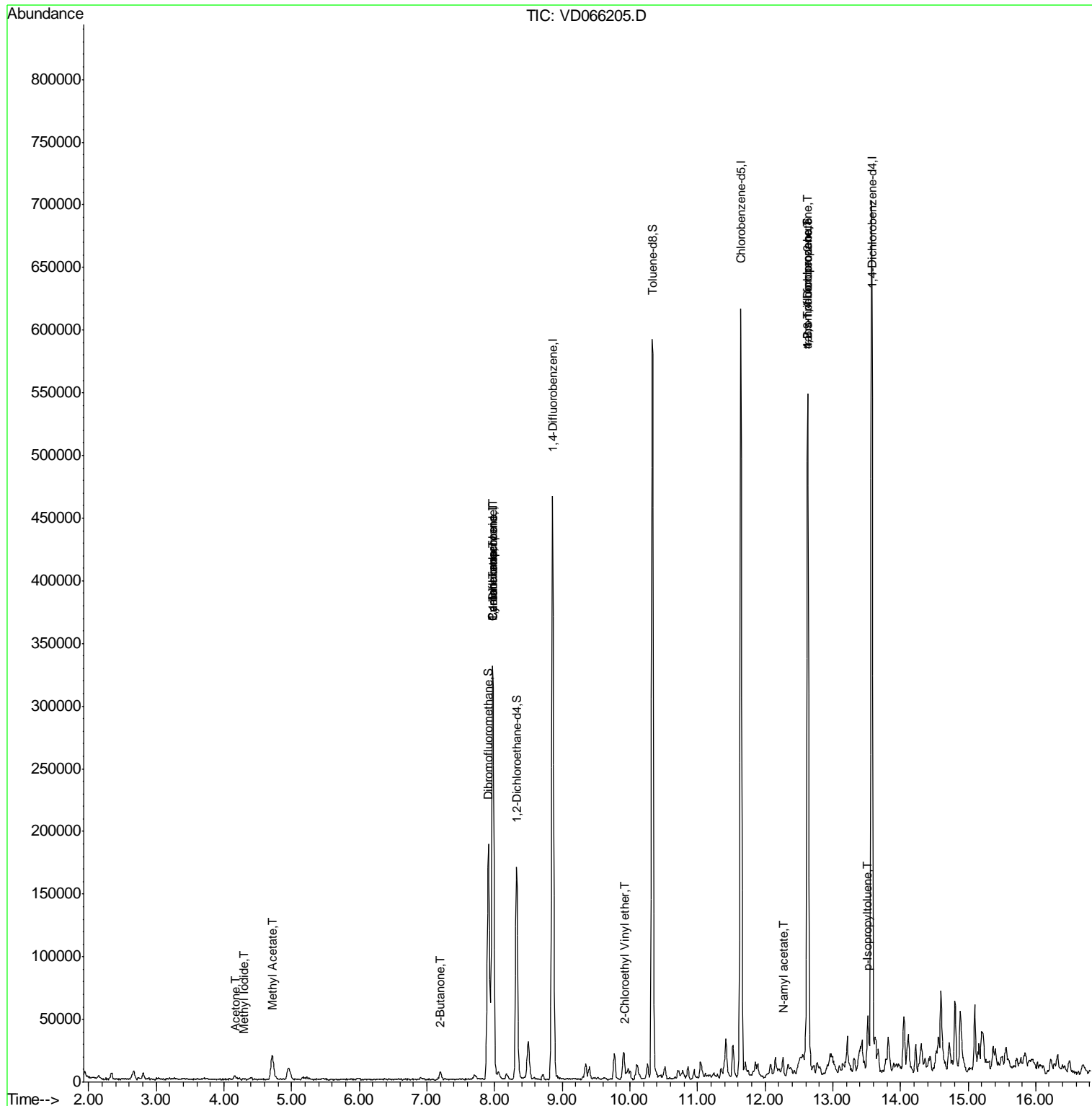
					Qvalue	
10) Methyl Iodide	4.30	142	755	7.001	ug/l #	48
11) Tert butyl alcohol	5.23	59	1863	Below Cal	#	76
16) Acetone	4.17	43	4962	11.121	ug/l #	86
18) Methyl Acetate	4.72	43	39394	34.761	ug/l	96
20) Methylene Chloride	4.95	84	7489	Below Cal	#	80
25) 2-Butanone	7.20	43	1421	2.165	ug/l #	47
31) Cyclohexane	7.97	56	6980	1.694	ug/l #	37
36) 1,1-Dichloropropene	7.97	75	18933	4.948	ug/l #	49
38) Carbon Tetrachloride	7.97	117	26473	6.204	ug/l #	13
58) 2-Chloroethyl Vinyl ether	9.94	63	1432	1.287	ug/l	97
74) N-amyl acetate	12.27	43	4724	1.623	ug/l #	59
76) 1,2,3-Trichloropropane	12.63	75	84562	51.222	ug/l #	100
81) trans-1,4-Dichloro-2-buten	12.63	75	84562	113.230	ug/l #	13
86) p-Isopropyltoluene	13.52	119	18786	1.526	ug/l	94

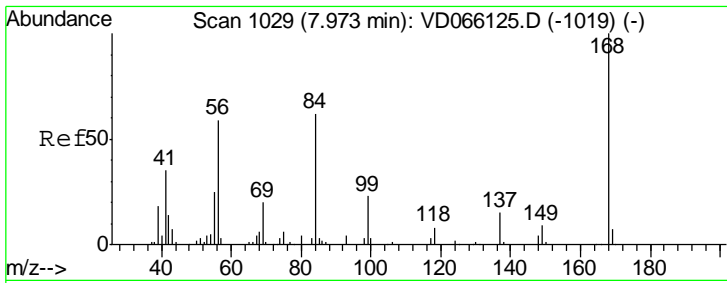
(#) = qualifier out of range (m) = manual integration (+) = signals summed

Data Path : Z:\VOASRV\HPCHEM1\MSVOA_D\DATA\VD081220\
 Data File : VD066205.D
 Acq On : 12 Aug 2020 15:37
 Operator : VA/SY
 Sample : L3652-03
 Misc : 6.68G/5.00ml/MSVOA_D/SOIL
 ALS Vial : 7 Sample Multiplier: 1

Instrument :
 MSVOA_D
 Client Sampled :
 STOCKPILE-2

Quant Time: Aug 12 16:04:06 2020
 Quant Method : Z:\VOASRV\HPCHEM1\MSVOA_D\METHOD\82D080520S.M
 Quant Title : SW846 8260
 QLast Update : Wed Aug 05 13:49:25 2020
 Response via : Initial Calibration

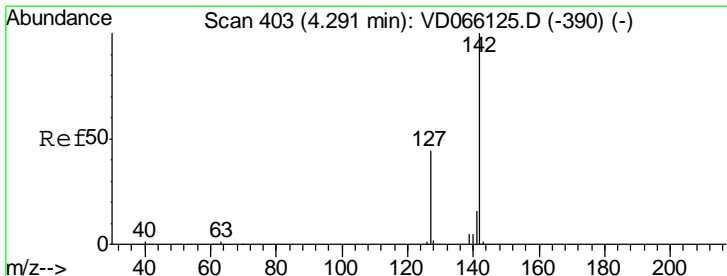
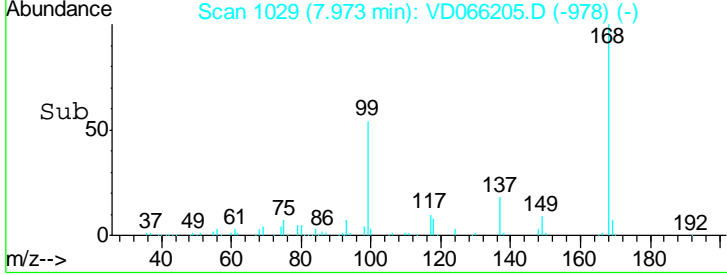
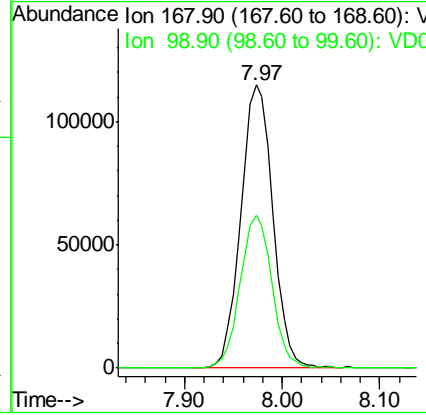
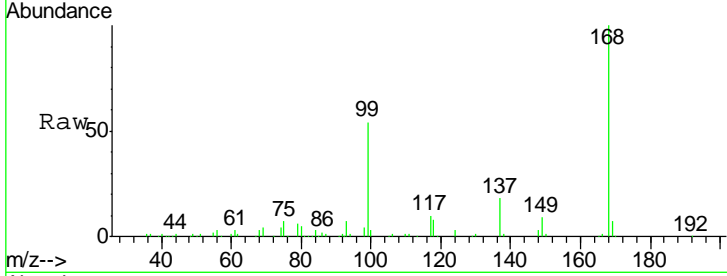




#1
 Pentafluorobenzene
 Concen: 50.000 ug/l
 RT: 7.97 min Scan# 1029
 Delta R.T. -0.00 min
 Lab File: VD066205.D
 Acq: 12 Aug 2020 15:37

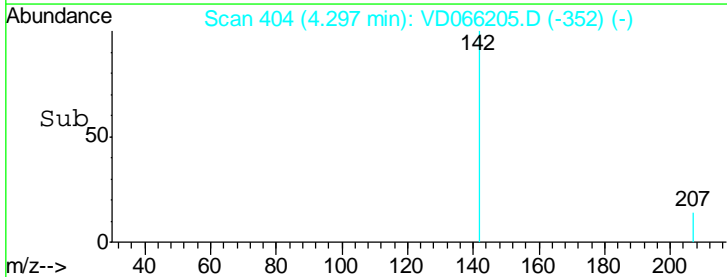
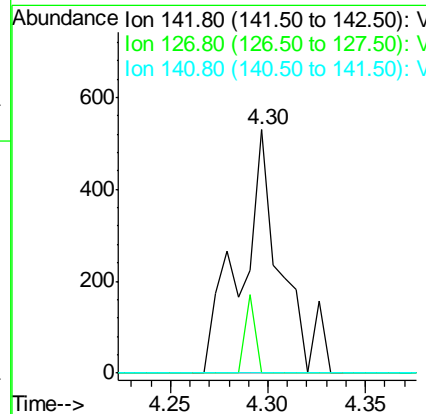
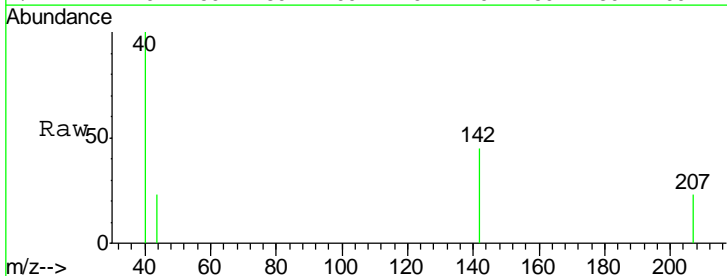
Instrument : MSVOA_D
 ClientSampleId : STOCKPILE-2

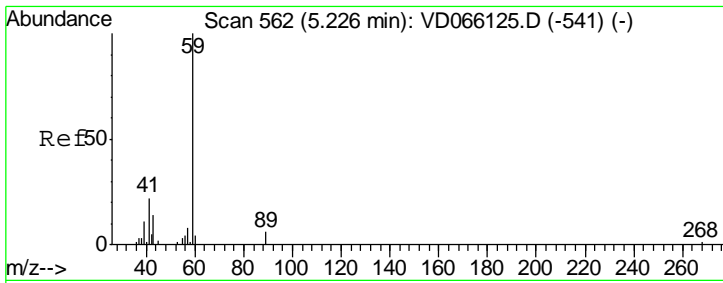
Tgt Ion	Resp	Lower	Upper
168	100		
99	54.1	42.2	63.4



#10
 Methyl Iodide
 Concen: 7.001 ug/l
 RT: 4.30 min Scan# 404
 Delta R.T. 0.01 min
 Lab File: VD066205.D
 Acq: 12 Aug 2020 15:37

Tgt Ion	Resp	Lower	Upper
142	100		
127	7.9	36.2	54.4#
141	0.0	12.6	18.8#

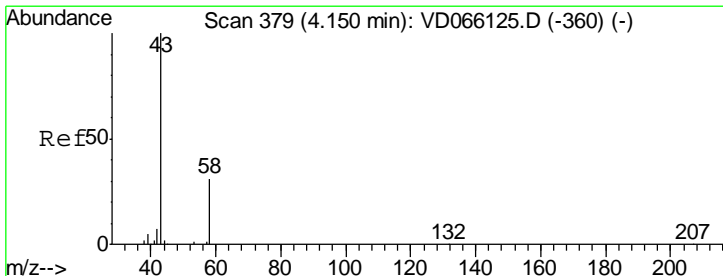
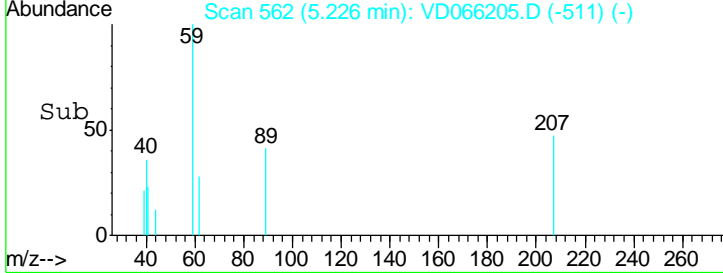
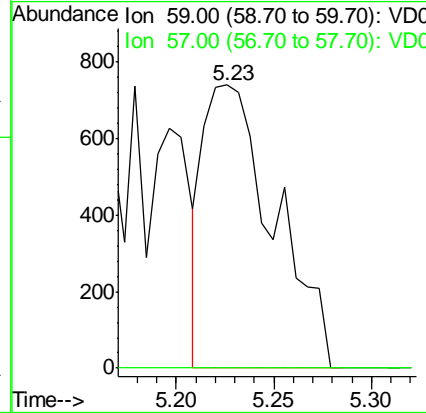
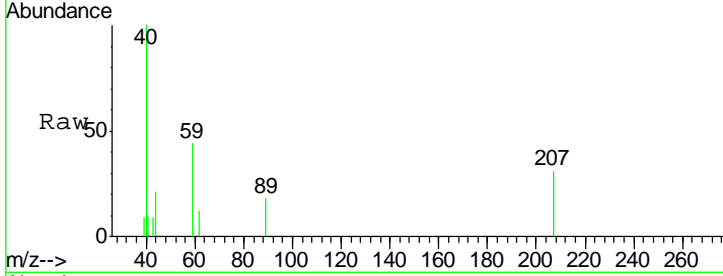




#11
 Tert butyl alcohol
 Concen: Below Cal
 RT: 5.23 min Scan# 562
 Delta R.T. 0.00 min
 Lab File: VD066205.D
 Acq: 12 Aug 2020 15:37

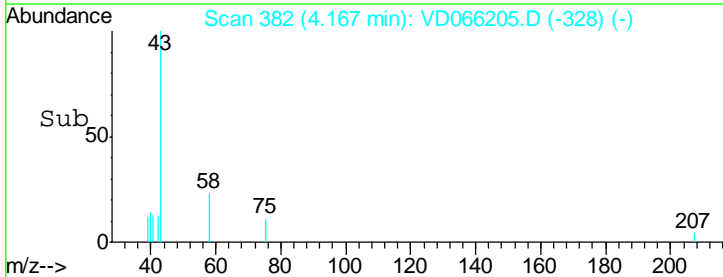
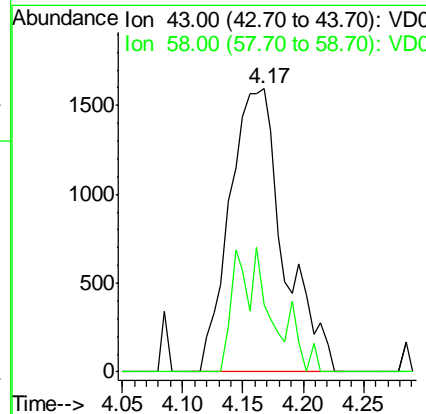
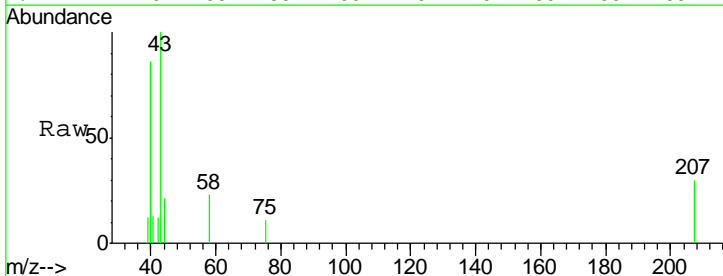
Instrument : MSVOA_D
 ClientSampled : STOCKPILE-2

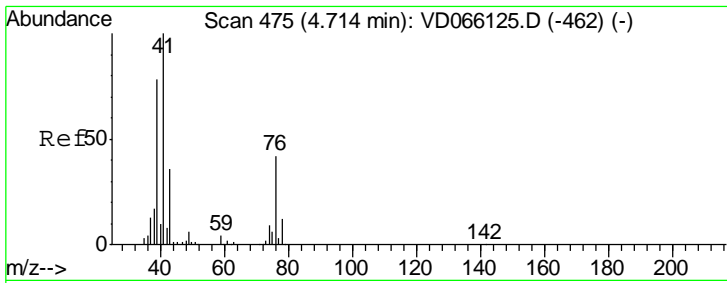
Tgt Ion: 59 Resp: 1863
 Ion Ratio Lower Upper
 59 100
 57 0.0 7.0 10.4#



#16
 Acetone
 Concen: 11.121 ug/l
 RT: 4.17 min Scan# 382
 Delta R.T. 0.02 min
 Lab File: VD066205.D
 Acq: 12 Aug 2020 15:37

Tgt Ion: 43 Resp: 4962
 Ion Ratio Lower Upper
 43 100
 58 23.5 24.7 37.1#

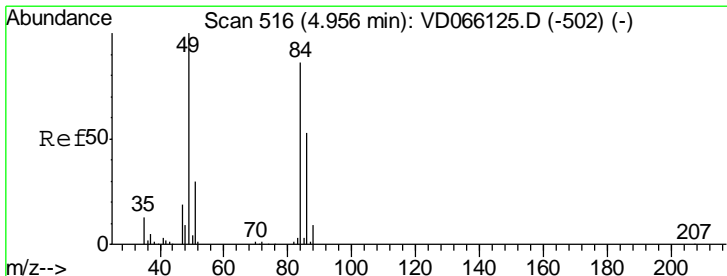
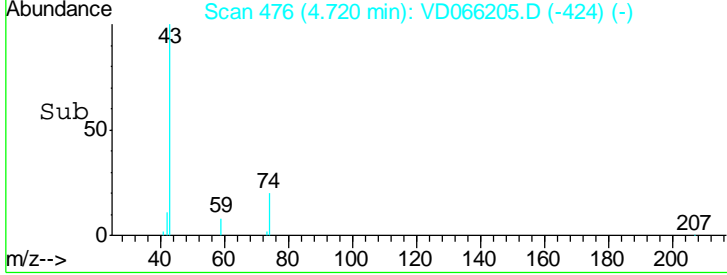
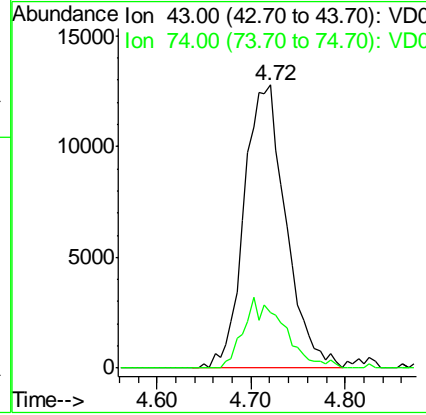
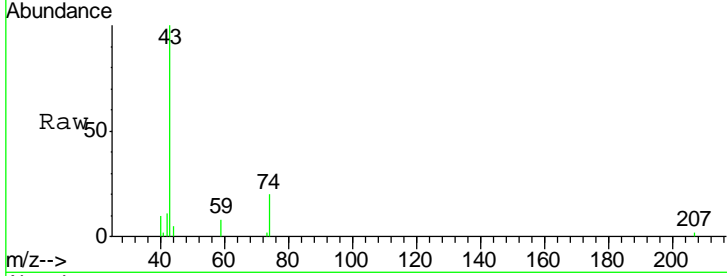




#18
 Methyl Acetate
 Concen: 34.761 ug/l
 RT: 4.72 min Scan# 476
 Delta R.T. 0.01 min
 Lab File: VD066205.D
 Acq: 12 Aug 2020 15:37

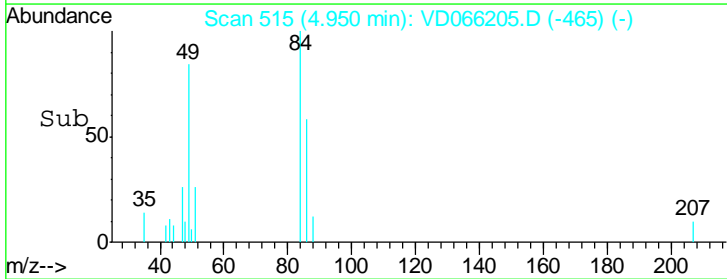
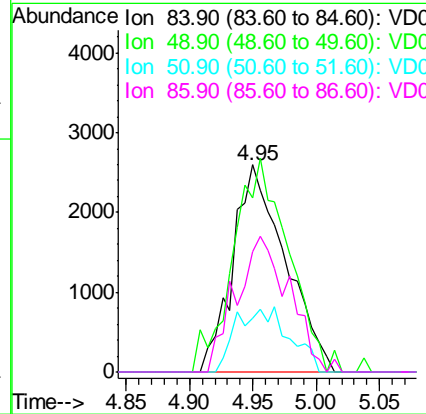
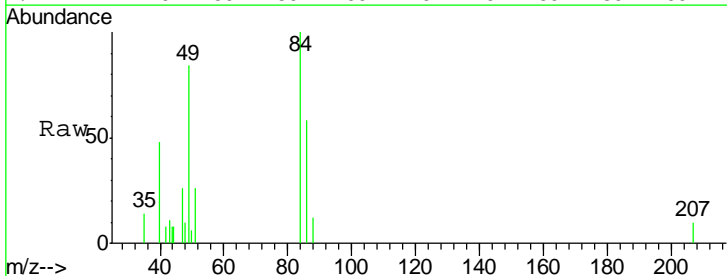
Instrument :
 MSVOA_D
ClientSampled :
 STOCKPILE-2

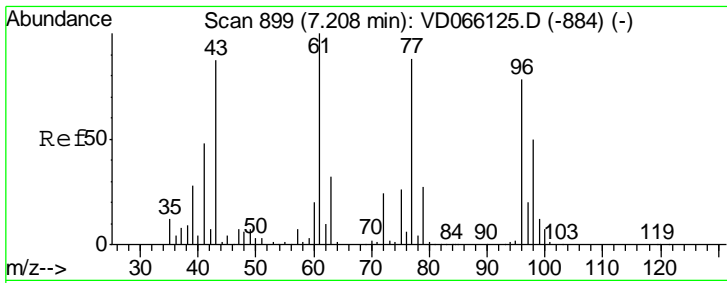
Tgt Ion	Resp	Lower	Upper
43	100		
74	24.3	21.2	31.8



#20
 Methylene Chloride
 Concen: Below Cal
 RT: 4.95 min Scan# 515
 Delta R.T. -0.01 min
 Lab File: VD066205.D
 Acq: 12 Aug 2020 15:37

Tgt Ion	Resp	Lower	Upper
84	100		
49	84.1	93.5	140.3#
51	26.0	28.2	42.4#
86	58.3	49.5	74.3

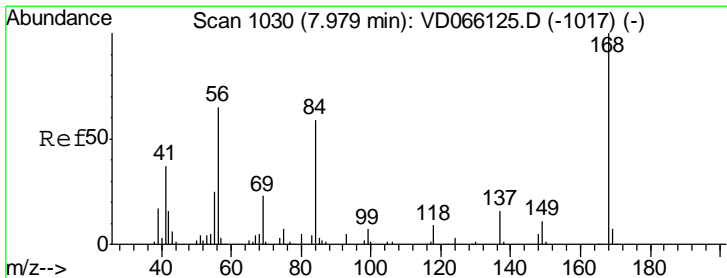
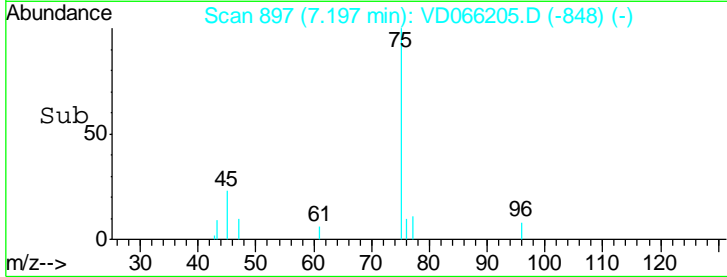
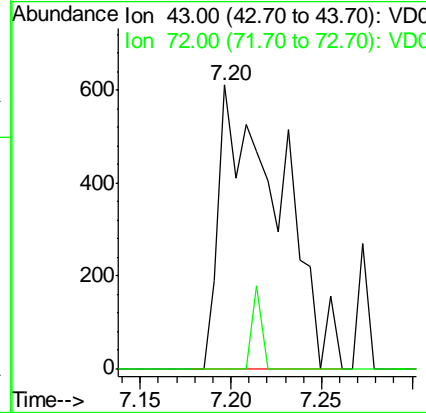
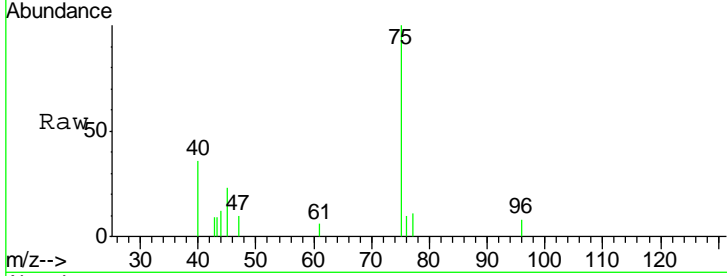




#25
 2-Butanone
 Concen: 2.165 ug/l
 RT: 7.20 min Scan# 897
 Delta R.T. -0.01 min
 Lab File: VD066205.D
 Acq: 12 Aug 2020 15:37

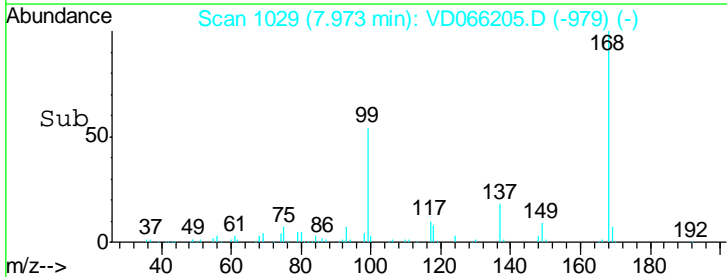
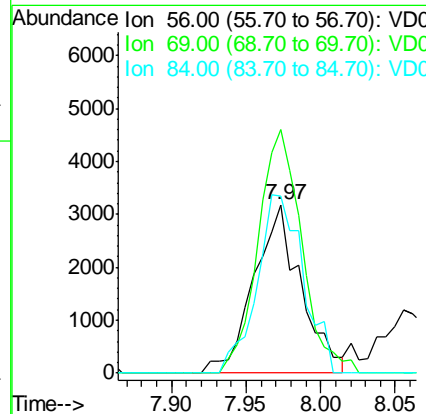
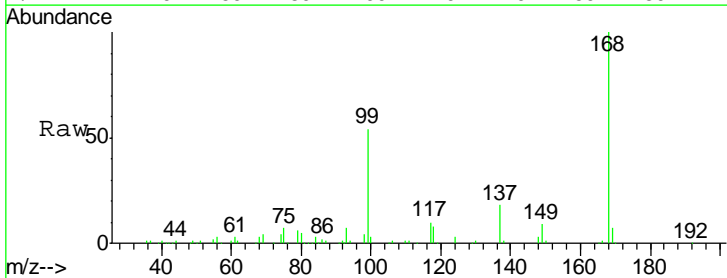
Instrument :
 MSVOA_D
ClientSampled :
 STOCKPILE-2

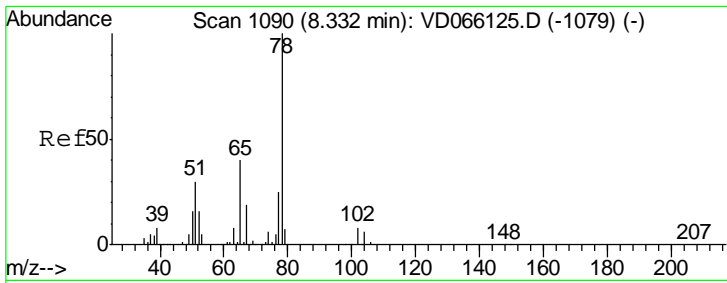
Tgt Ion: 43 Resp: 1421
 Ion Ratio Lower Upper
 43 100
 72 0.0 22.2 33.2#



#31
 Cyclohexane
 Concen: 1.694 ug/l
 RT: 7.97 min Scan# 1029
 Delta R.T. -0.01 min
 Lab File: VD066205.D
 Acq: 12 Aug 2020 15:37

Tgt Ion: 56 Resp: 6980
 Ion Ratio Lower Upper
 56 100
 69 144.8 28.8 43.2#
 84 105.0 73.0 109.6

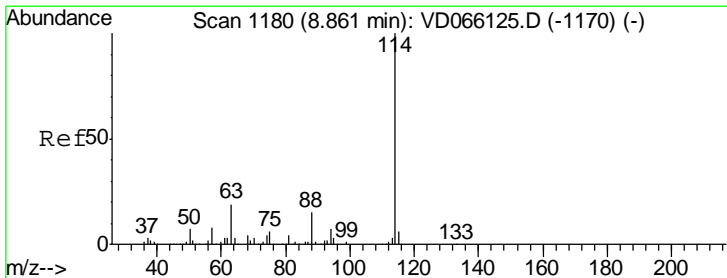
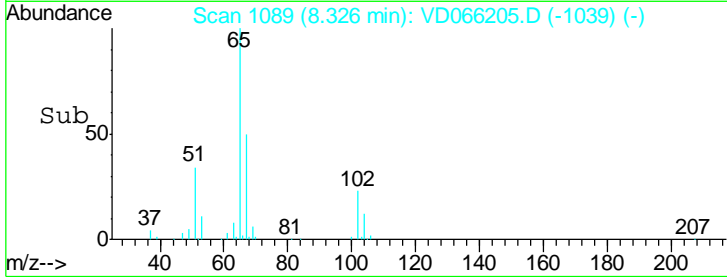
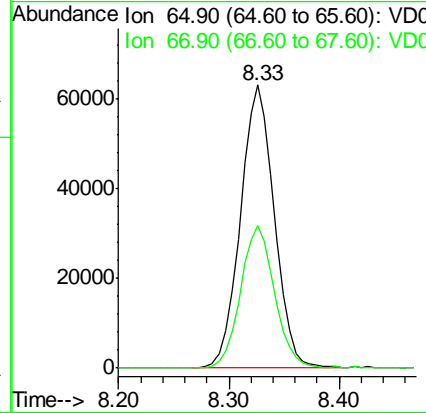
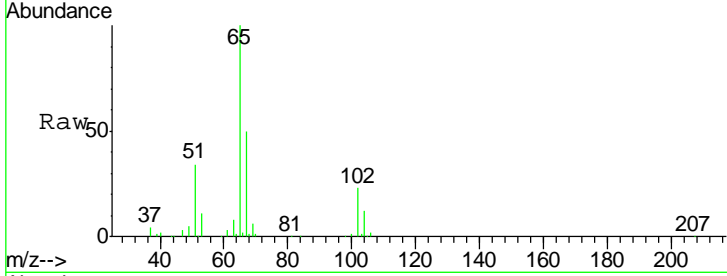




#33
 1,2-Dichloroethane-d4
 Concen: 57.650 ug/l
 RT: 8.33 min Scan# 1089
 Delta R.T. -0.01 min
 Lab File: VD066205.D
 Acq: 12 Aug 2020 15:37

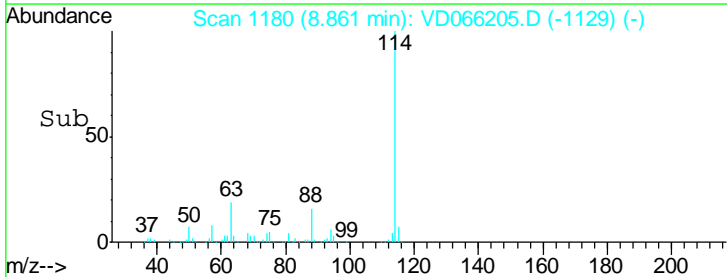
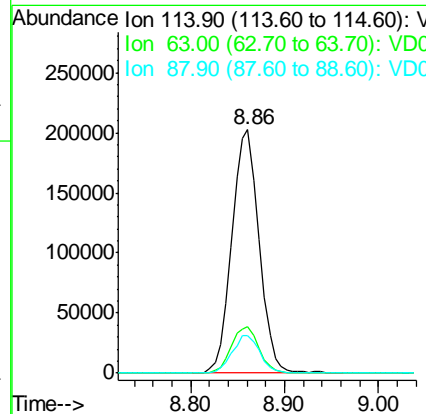
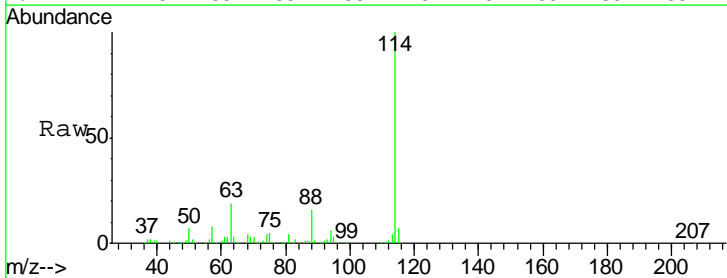
Instrument :
 MSVOA_D
ClientSampled :
 STOCKPILE-2

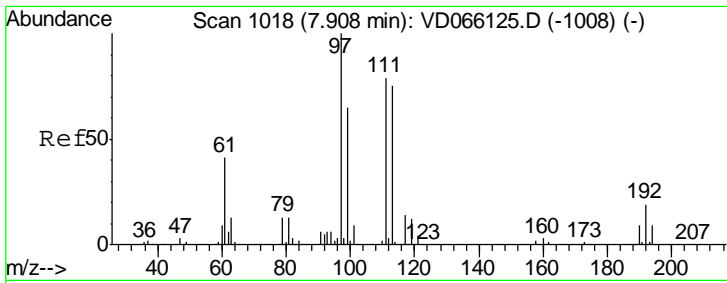
Tgt Ion: 65 Resp: 135560
 Ion Ratio Lower Upper
 65 100
 67 50.5 0.0 104.6



#34
 1,4-Difluorobenzene
 Concen: 50.000 ug/l
 RT: 8.86 min Scan# 1180
 Delta R.T. -0.00 min
 Lab File: VD066205.D
 Acq: 12 Aug 2020 15:37

Tgt Ion: 114 Resp: 407196
 Ion Ratio Lower Upper
 114 100
 63 18.9 0.0 38.6
 88 15.6 0.0 30.0

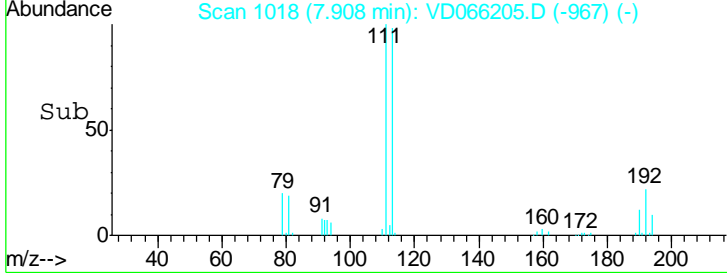
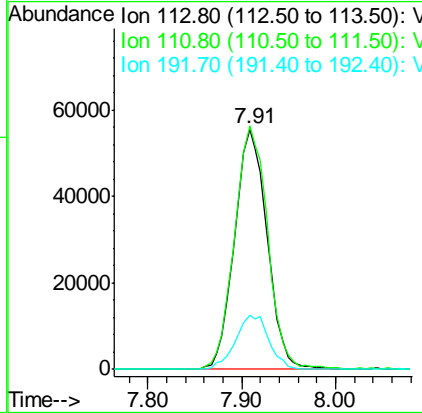
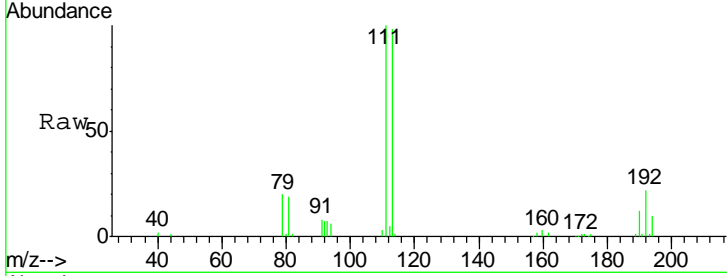




#35
 Dibromofluoromethane
 Concen: 51.586 ug/l
 RT: 7.91 min Scan# 1018
 Delta R.T. -0.00 min
 Lab File: VD066205.D
 Acq: 12 Aug 2020 15:37

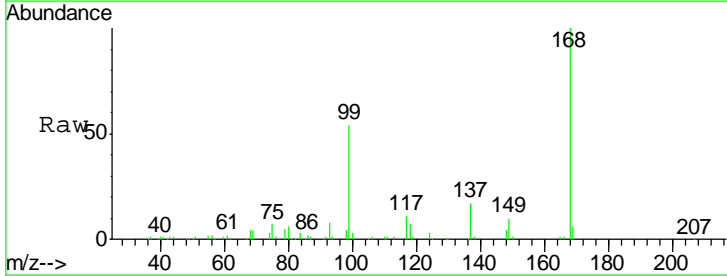
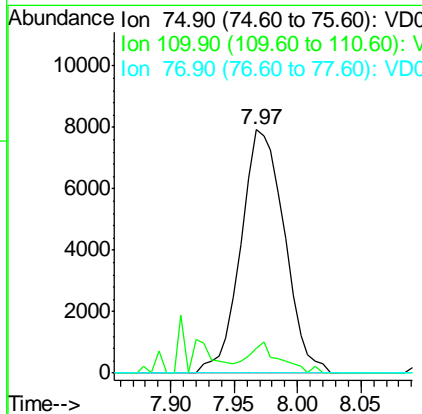
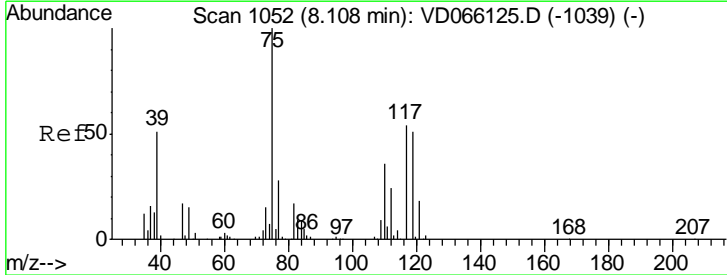
Instrument :
 MSVOA_D
ClientSampled :
 STOCKPILE-2

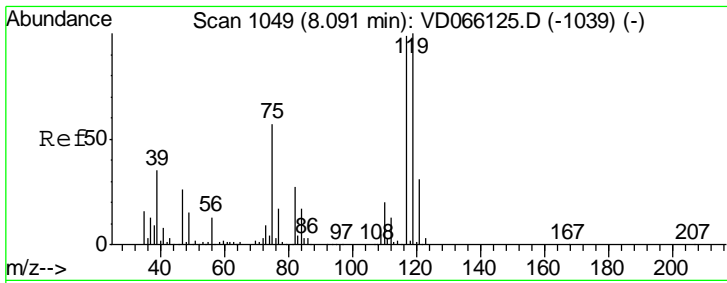
Tgt Ion	Resp	Lower	Upper
113	133069		
111	103.6	80.7	121.1
192	23.2	18.4	27.6



#36
 1,1-Dichloropropene
 Concen: 4.948 ug/l
 RT: 7.97 min Scan# 1028
 Delta R.T. -0.14 min
 Lab File: VD066205.D
 Acq: 12 Aug 2020 15:37

Tgt Ion	Resp	Lower	Upper
75	18933		
75	100		
110	9.3	18.8	56.3#
77	0.0	24.2	36.2#

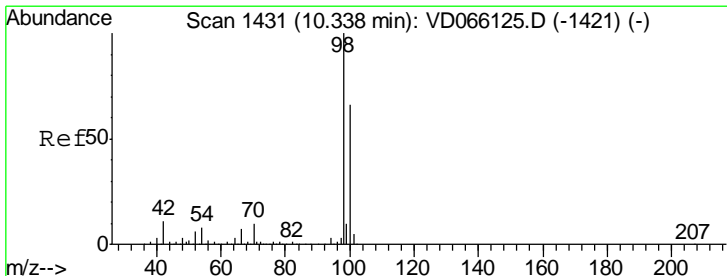
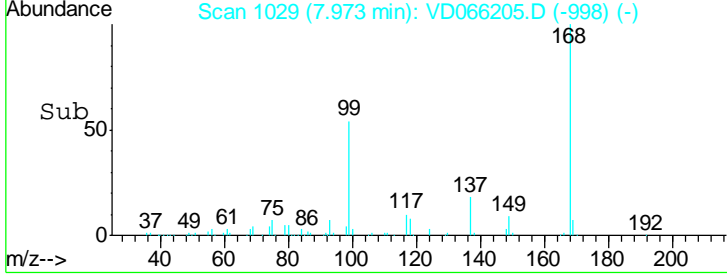
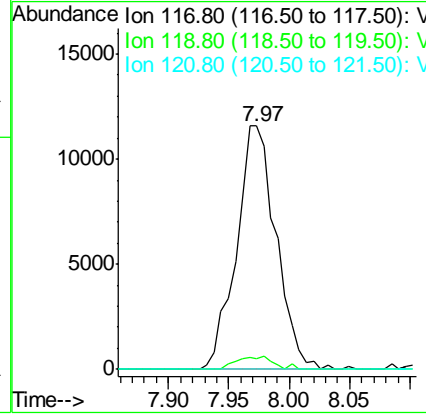
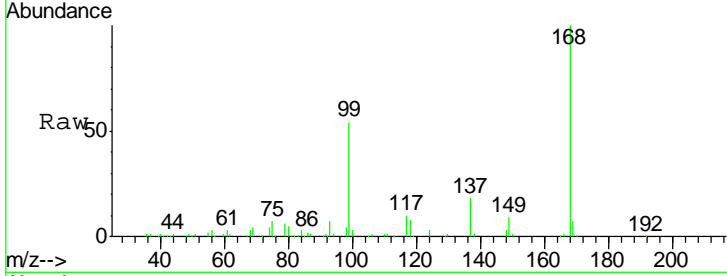




#38
 Carbon Tetrachloride
 Concen: 6.204 ug/l
 RT: 7.97 min Scan# 1029
 Delta R.T. -0.12 min
 Lab File: VD066205.D
 Acq: 12 Aug 2020 15:37

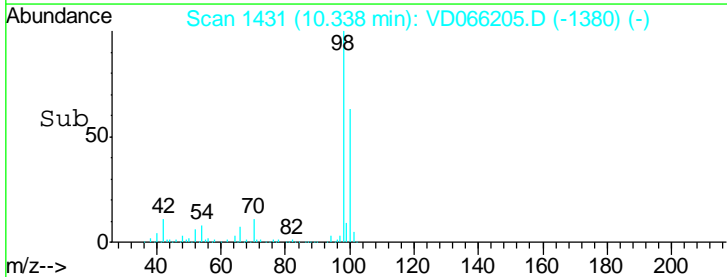
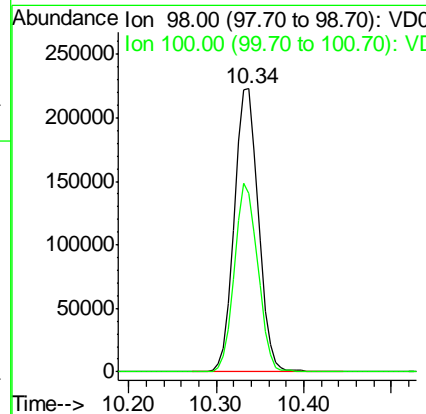
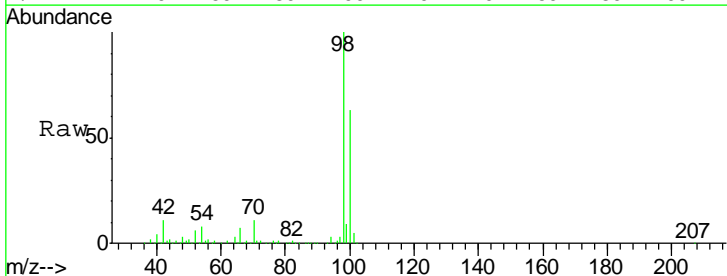
Instrument :
 MSVOA_D
ClientSampled :
 STOCKPILE-2

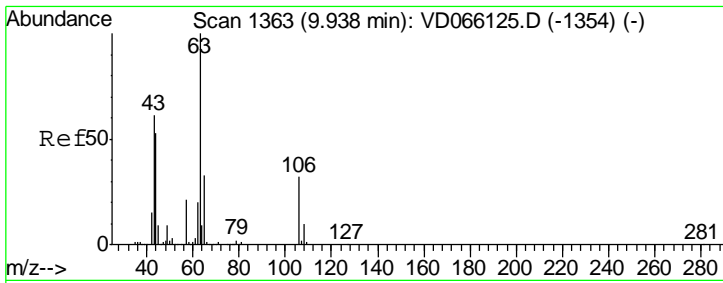
Tgt Ion	Resp	Lower	Upper
117	100		
119	4.6	81.0	121.4#
121	0.0	24.8	37.2#



#50
 Toluene-d8
 Concen: 43.933 ug/l
 RT: 10.34 min Scan# 1431
 Delta R.T. -0.00 min
 Lab File: VD066205.D
 Acq: 12 Aug 2020 15:37

Tgt Ion	Resp	Lower	Upper
98	100		
100	64.6	52.6	78.8



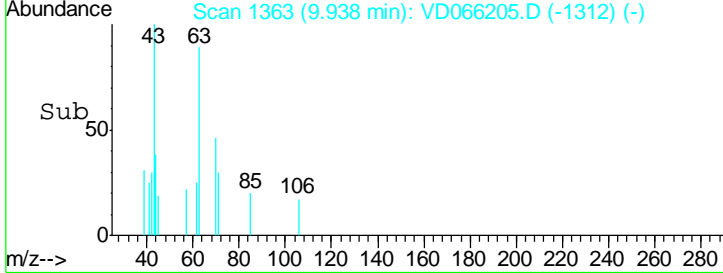
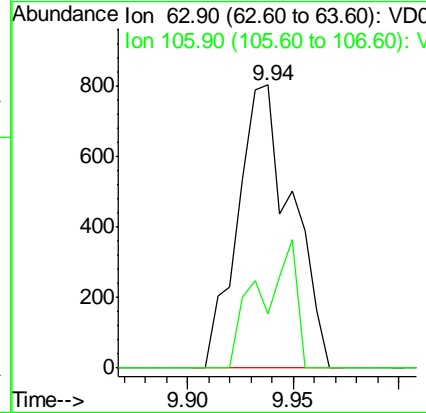
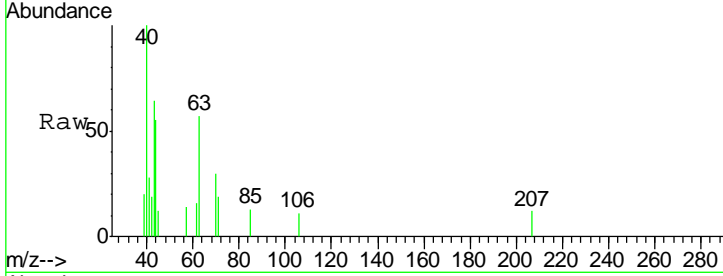


#58
 2-Chloroethyl Vinyl ether
 Concen: 1.287 ug/l
 RT: 9.94 min Scan# 1363
 Delta R.T. -0.00 min
 Lab File: VD066205.D
 Acq: 12 Aug 2020 15:37

Instrument :
 MSVOA_D
ClientSampled :
 STOCKPILE-2

Tgt Ion: 63 Resp: 1432

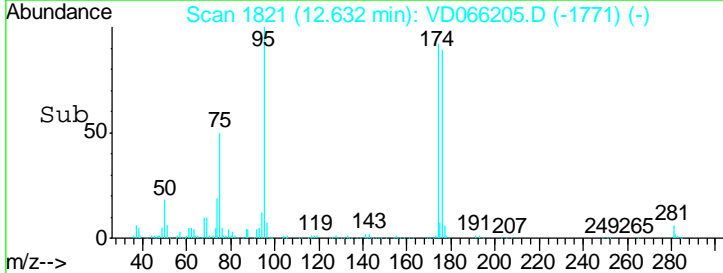
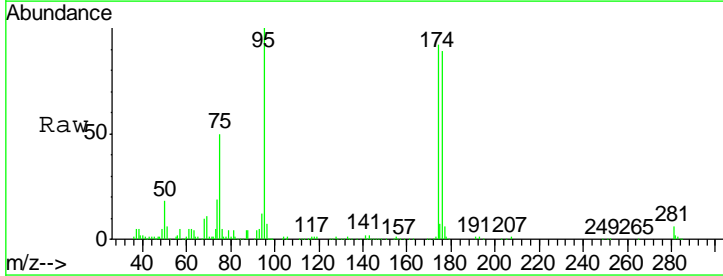
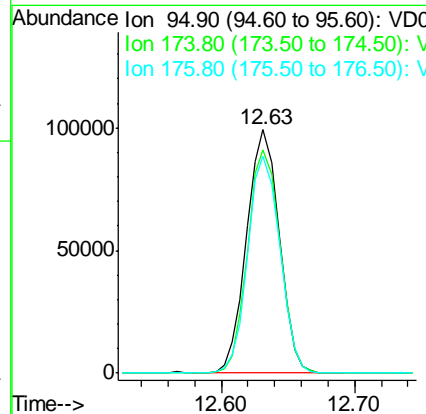
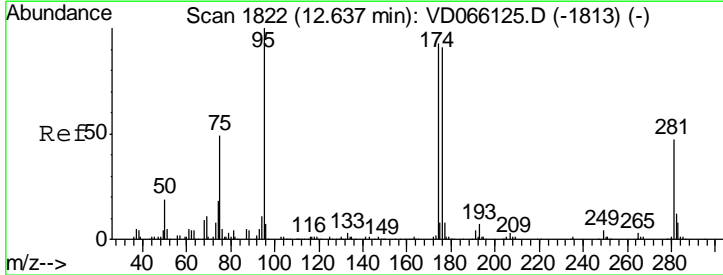
Ion	Ratio	Lower	Upper
63	100		
106	30.2	25.3	37.9

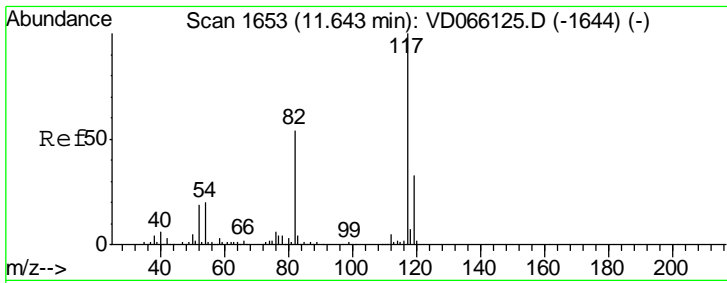


#62
 4-Bromofluorobenzene
 Concen: 48.987 ug/l
 RT: 12.63 min Scan# 1821
 Delta R.T. -0.01 min
 Lab File: VD066205.D
 Acq: 12 Aug 2020 15:37

Tgt Ion: 95 Resp: 168088

Ion	Ratio	Lower	Upper
95	100		
174	90.9	0.0	180.8
176	87.7	0.0	181.2

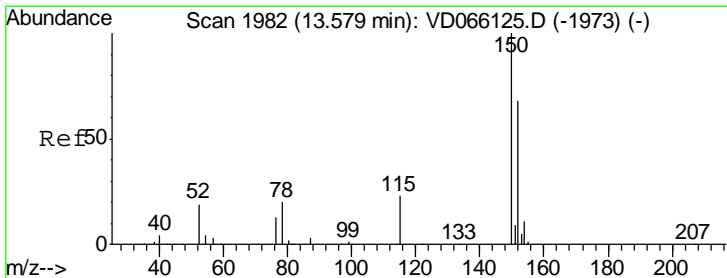
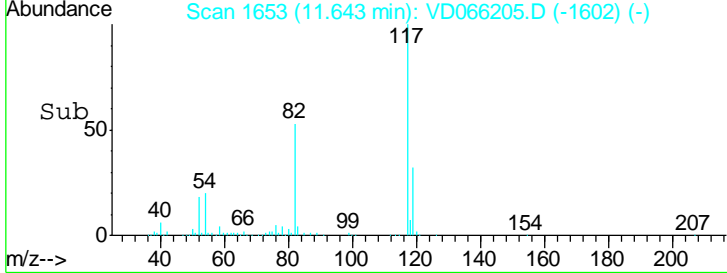
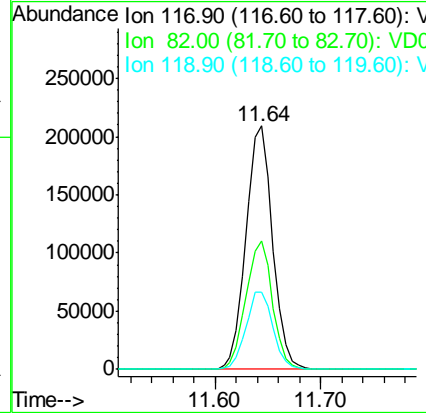
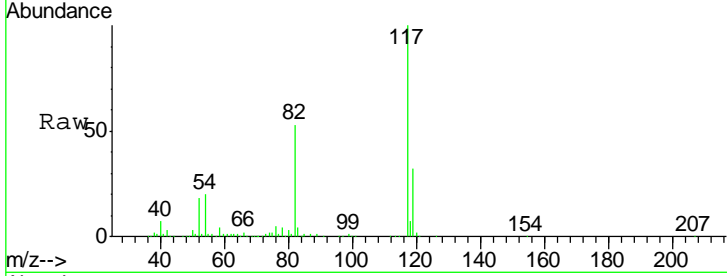




#63
 Chlorobenzene-d5
 Concen: 50.000 ug/l
 RT: 11.64 min Scan# 1653
 Delta R.T. -0.00 min
 Lab File: VD066205.D
 Acq: 12 Aug 2020 15:37

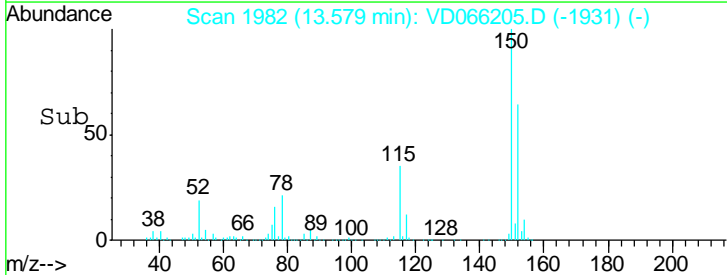
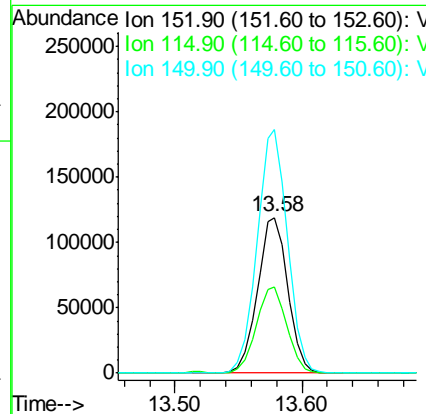
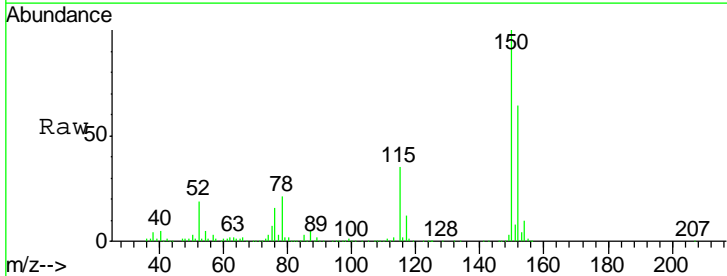
Instrument :
 MSVOA_D
 ClientSampled :
 STOCKPILE-2

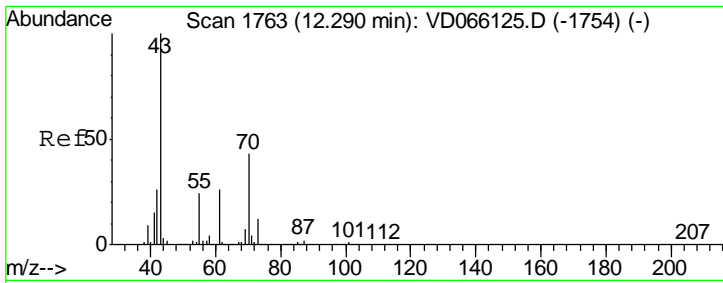
Tgt Ion	Resp	Lower	Upper
117	100		
82	52.7	43.0	64.4
119	31.9	26.1	39.1



#72
 1,4-Dichlorobenzene-d4
 Concen: 50.000 ug/l
 RT: 13.58 min Scan# 1982
 Delta R.T. -0.00 min
 Lab File: VD066205.D
 Acq: 12 Aug 2020 15:37

Tgt Ion	Resp	Lower	Upper
152	100		
115	56.0	28.0	83.9
150	156.4	0.0	346.4

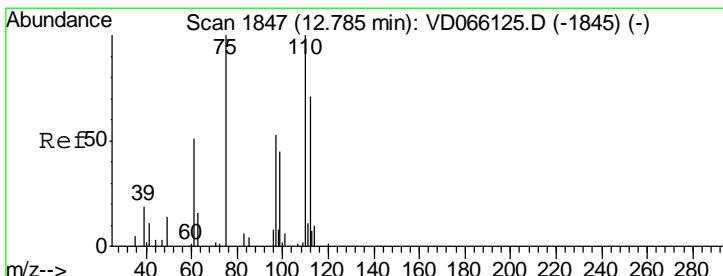
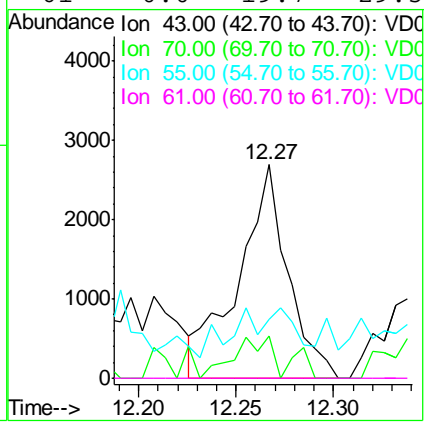
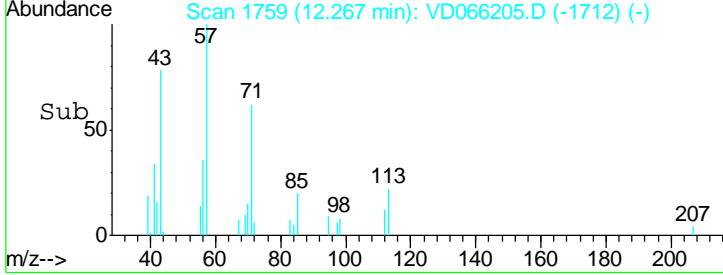
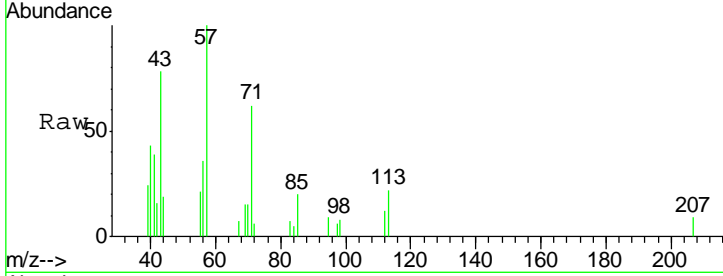




#74
 N-amyI acetate
 Concen: 1.623 ug/l
 RT: 12.27 min Scan# 1759
 Delta R.T. -0.02 min
 Lab File: VD066205.D
 Acq: 12 Aug 2020 15:37

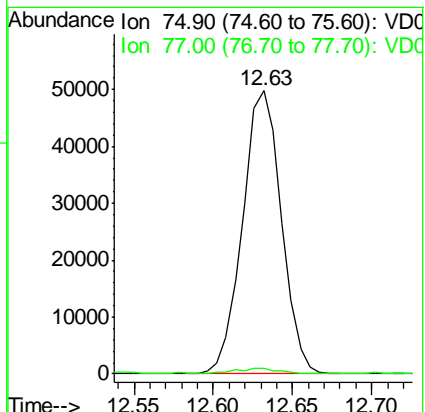
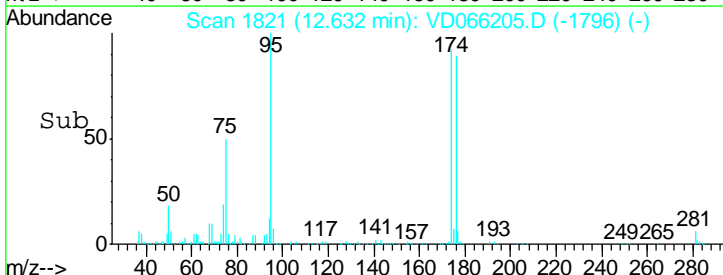
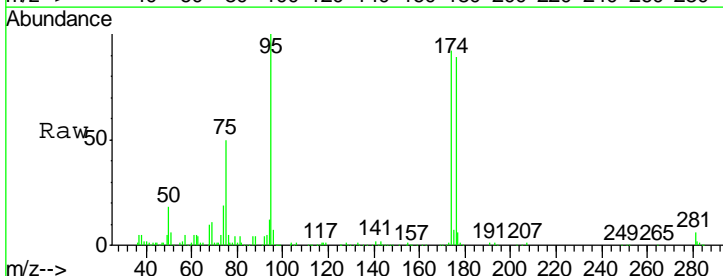
Instrument : MSVOA_D
 ClientSampleId : STOCKPILE-2

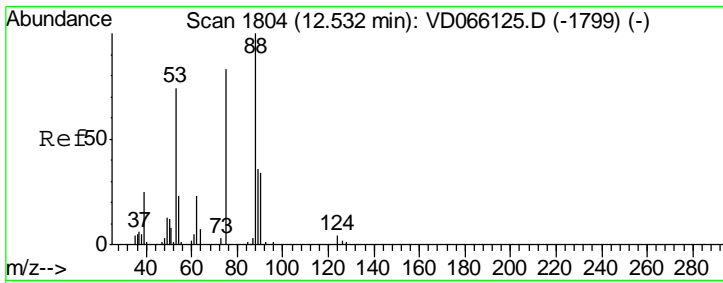
Tgt Ion	Resp	Lower	Upper
43	100		
70	13.5	34.9	52.3#
55	13.5	19.2	28.8#
61	0.0	19.7	29.5#



#76
 1,2,3-Trichloropropane
 Concen: 51.222 ug/l
 RT: 12.63 min Scan# 1821
 Delta R.T. -0.15 min
 Lab File: VD066205.D
 Acq: 12 Aug 2020 15:37

Tgt Ion	Resp	Lower	Upper
75	100		
77	2.2	0.0	0.0#

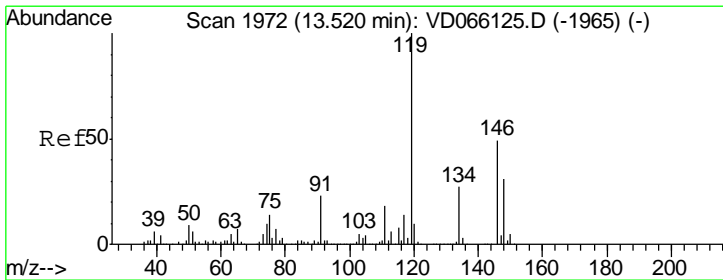
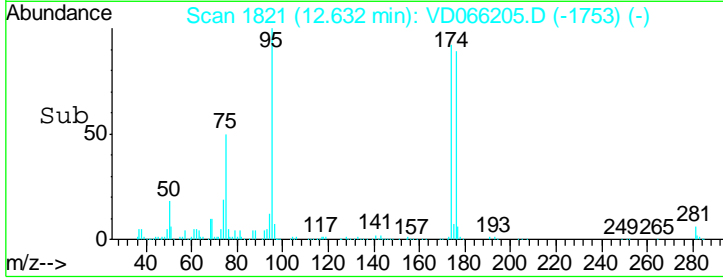
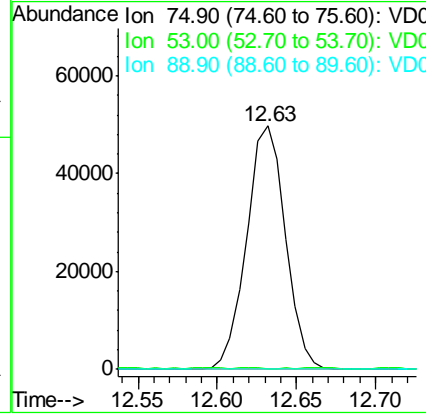
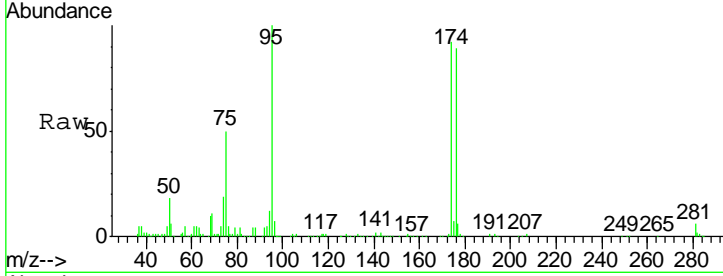




#81
 trans-1,4-Dichloro-2-butene
 Concen: 113.230 ug/l
 RT: 12.63 min Scan# 1821
 Delta R.T. 0.10 min
 Lab File: VD066205.D
 Acq: 12 Aug 2020 15:37

Instrument :
 MSVOA_D
 ClientSampled :
 STOCKPILE-2

Tgt Ion	Resp	Lower	Upper
75	100		
53	0.0	73.4	110.2#
89	0.0	36.6	55.0#



#86
 p-Isopropyltoluene
 Concen: 1.526 ug/l
 RT: 13.52 min Scan# 1972
 Delta R.T. -0.00 min
 Lab File: VD066205.D
 Acq: 12 Aug 2020 15:37

Tgt Ion	Resp	Lower	Upper
119	100		
134	26.2	13.5	40.4
91	27.4	11.2	33.5

