

Data Path : Z:\voasrv\HPCHEM1\MSVOA_D\Data\VD081222\
 Data File : VD074058.D
 Acq On : 12 Aug 2022 12:23
 Operator : VA/SY
 Sample : VD0812SBL01
 Misc : 5.00G/5.00ml/MSVOA_D/SOIL
 ALS Vial : 4 Sample Multiplier: 1

Instrument :
 MSVOA_D
 ClientSampleId :
 VD0812SBL01

Integration Parameters: RTEINT.P

Integrator: RTE
 Smoothing : ON Filtering: 5
 Sampling : 1 Min Area: 3 % of largest Peak
 Start Thrs: 0.2 Max Peaks: 100
 Stop Thrs : 0 Peak Location: TOP

If leading or trailing edge < 100 prefer < Baseline drop else tangent >
 Peak separation: 5

Method : Z:\voasrv\HPCHEM1\MSVOA_D\Method\82D081022S.M
 Title : SW846 8260

Signal : TIC: VD074058.D\data.ms

peak #	R.T. min	first scan	max scan	last scan	PK TY	peak height	corr. area	corr. % max.	% of total
1	2.220	45	51	54	rBV3	3688	6723	1.03%	0.174%
2	2.644	120	123	131	rVB5	3877	9047	1.39%	0.235%
3	3.132	204	206	215	rVB3	4438	8855	1.36%	0.230%
4	4.955	506	516	527	rBV3	8854	26529	4.07%	0.688%
5	7.191	883	896	905	rBV2	20162	58814	9.01%	1.525%
6	7.902	1007	1017	1023	rBV	105737	259004	39.69%	6.715%
7	7.973	1023	1029	1045	rVB	184139	408721	62.63%	10.597%
8	8.320	1073	1088	1097	rBV3	81483	257849	39.51%	6.685%
9	8.855	1170	1179	1187	rBV	275250	546466	83.74%	14.168%
10	10.332	1422	1430	1438	rBV	256621	474666	72.74%	12.306%
11	10.714	1488	1495	1503	rVB3	18043	31643	4.85%	0.820%
12	11.073	1549	1556	1565	rVB3	16282	27488	4.21%	0.713%
13	11.443	1615	1619	1625	rVB	10474	14826	2.27%	0.384%
14	11.632	1643	1651	1661	rBV	370400	652595	100.00%	16.919%
15	12.620	1811	1819	1828	rVB	276558	449602	68.89%	11.656%
16	12.937	1867	1873	1879	rVB4	4128	7382	1.13%	0.191%
17	13.561	1972	1979	1986	rVB	367453	598691	91.74%	15.522%
18	14.079	2062	2067	2074	rBV3	4963	8908	1.37%	0.231%
19	15.455	2295	2301	2306	rBV4	6219	9294	1.42%	0.241%

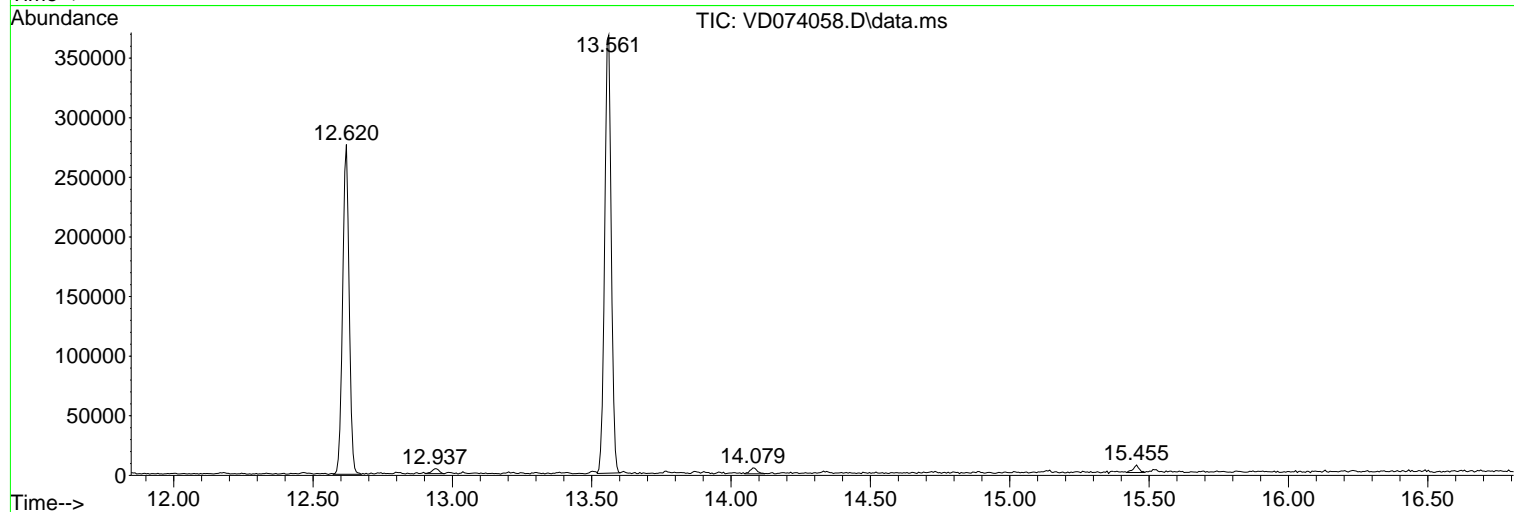
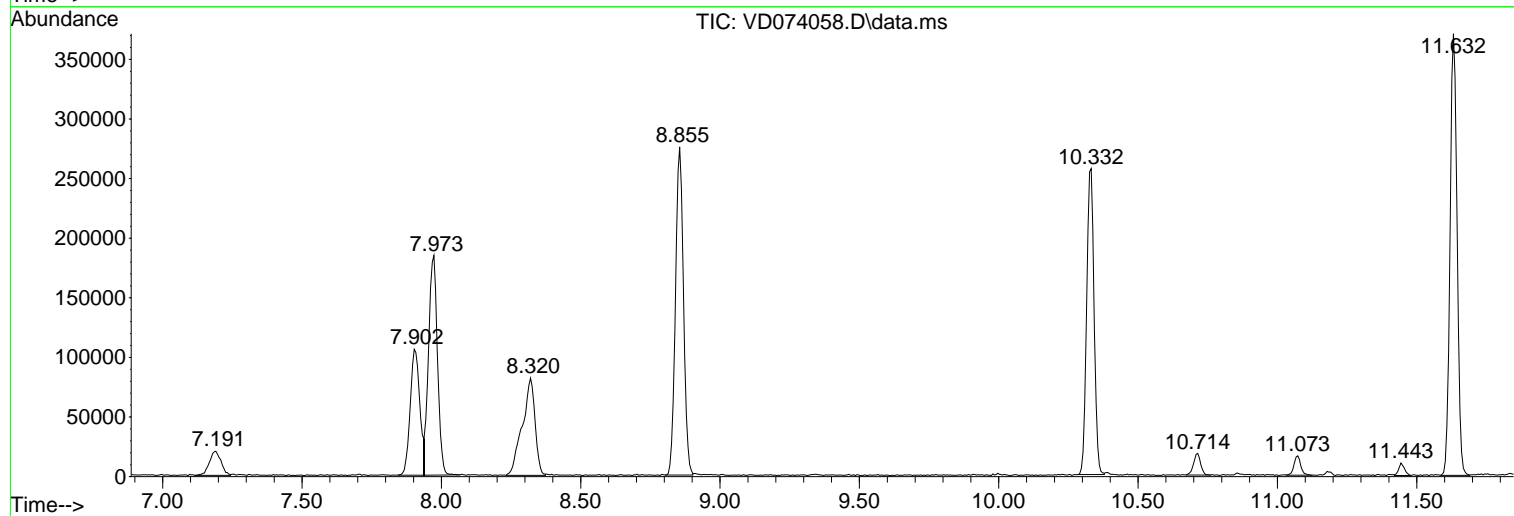
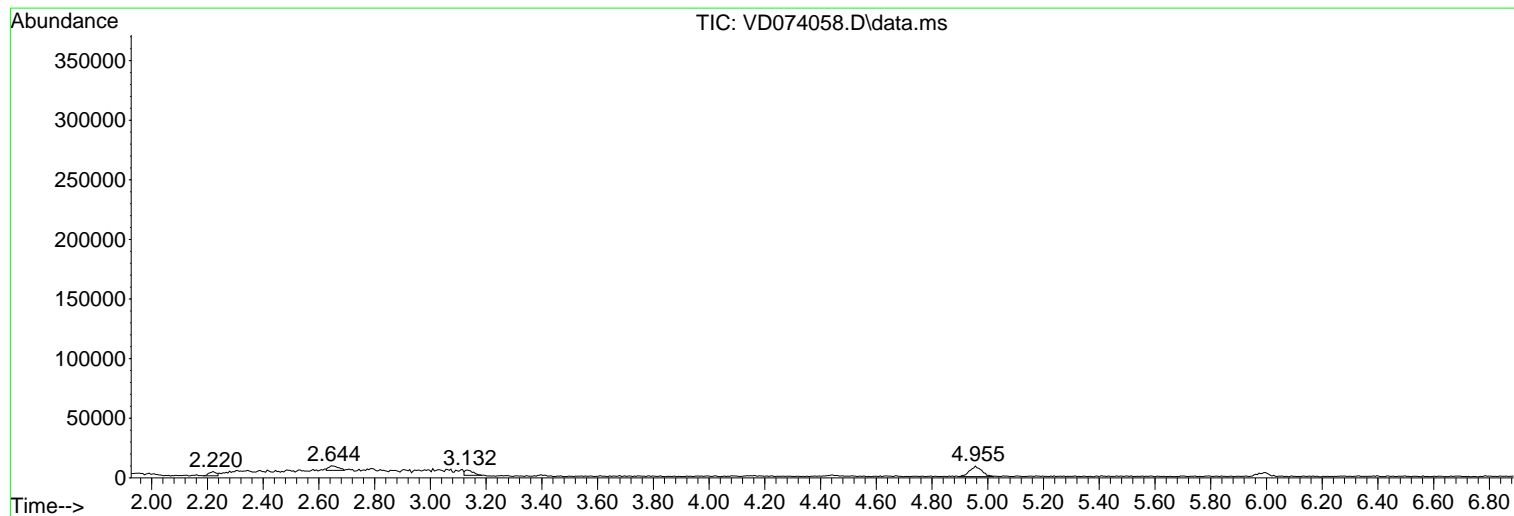
Sum of corrected areas: 3857103

Data Path : Z:\voasrv\HPCHEM1\MSVOA_D\Data\VD081222\
Data File : VD074058.D
Acq On : 12 Aug 2022 12:23
Operator : VA/SY
Sample : VD0812SBL01
Misc : 5.00G/5.00ml/MSVOA_D/SOIL
ALS Vial : 4 Sample Multiplier: 1

Instrument :
MSVOA_D
ClientSampleId :
VD0812SBL01

Quant Method : Z:\voasrv\HPCHEM1\MSVOA_D\Method\82D081022S.M
Quant Title : SW846 8260

TIC Library : C:\Database\NIST20.L
TIC Integration Parameters: LSCINT.P



Data Path : Z:\voasrv\HPCHEM1\MSVOA_D\Data\VD081222\
 Data File : VD074058.D
 Acq On : 12 Aug 2022 12:23
 Operator : VA/SY
 Sample : VD0812SBL01
 Misc : 5.00G/5.00ml/MSVOA_D/SOIL
 ALS Vial : 4 Sample Multiplier: 1

Instrument :
 MSVOA_D
 ClientSampleId :
 VD0812SBL01

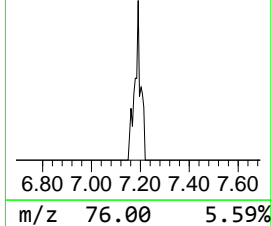
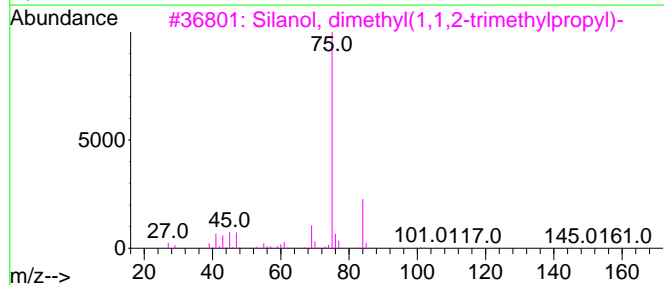
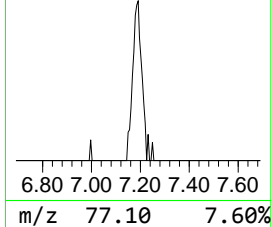
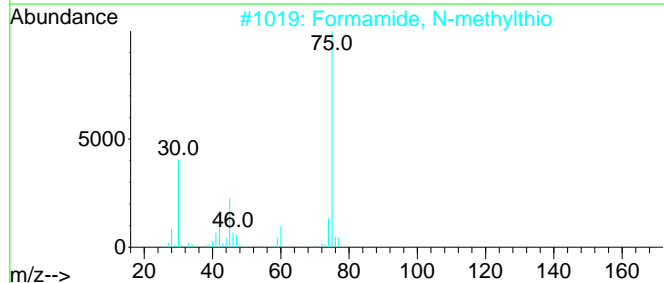
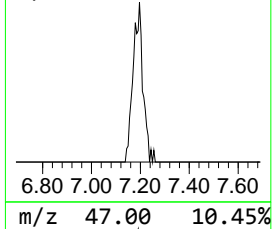
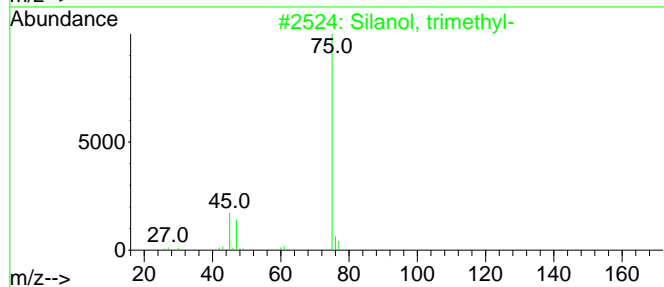
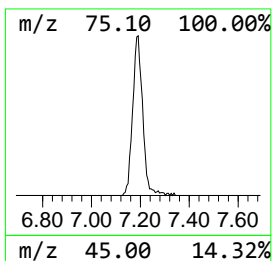
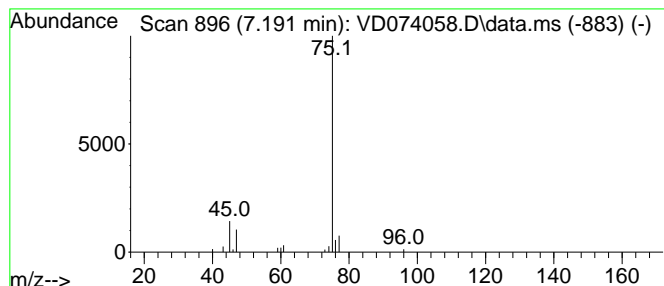
Quant Method : Z:\voasrv\HPCHEM1\MSVOA_D\Method\82D081022S.M
 Quant Title : SW846 8260

TIC Library : C:\Database\NIST20.L
 TIC Integration Parameters: LSCINT.P

 Peak Number 1 Silanol, trimethyl- Concentration Rank 1

R.T.	EstConc	Area	Relative to ISTD	R.T.
7.191	7.19 ug/l	58814	Pentafluorobenzene	7.973

Hit#	of	5	Tentative ID	MW	MolForm	CAS#	Qual
1			Silanol, trimethyl-	90	C3H10OSi	001066-40-6	78
2			Formamide, N-methylthio	75	C2H5NS	018952-41-5	40
3			Silanol, dimethyl(1,1,2-trimethy...	160	C8H20OSi	055644-10-5	37
4			Ethanethioamide	75	C2H5NS	000062-55-5	9
5			Ethane, 1,1,2-trimethoxy-	120	C5H12O3	024332-20-5	9



Data Path : Z:\voasrv\HPCHEM1\MSVOA_D\Data\VD081222\
Data File : VD074058.D
Acq On : 12 Aug 2022 12:23
Operator : VA/SY
Sample : VD0812SBL01
Misc : 5.00G/5.00ml/MSVOA_D/SOIL
ALS Vial : 4 Sample Multiplier: 1

Instrument :
MSVOA_D
ClientSampleId :
VD0812SBL01

Quant Method : Z:\voasrv\HPCHEM1\MSVOA_D\Method\82D081022S.M
Quant Title : SW846 8260

TIC Library : C:\Database\NIST0.L
TIC Integration Parameters: LSCINT.P

TIC Top Hit name	RT	EstConc	Units	Response	--Internal Standard--			
					#	RT	Resp	Conc
-----	-----	-----	-----	-----	-----	-----	-----	-----
Silanol, trimet...	7.191	7.2	ug/l	58814	1	7.973	408721	50.0