

Data Path : Z:\VOASRV\HPCHEM1\MSVOA D\DATA\VD081419\
 Data File : VD063584.D
 Acq On : 14 Aug 2019 19:53
 Operator : JC/SY
 Sample : K4290-03RE
 Misc : 5.03g/5ml/MSVOA D/SOIL
 ALS Vial : 24 Sample Multiplier: 1

Instrument :
 MSVOA_D
 ClientSampleId :

Quant Time: Aug 15 12:02:13 2019
 Quant Method : Z:\VOASRV\HPCHEM1\MSVOA_D\METHOD\82D080919S.M
 Quant Title : SW846 8260
 QLast Update : Sat Aug 10 06:42:47 2019
 Response via : Initial Calibration

Internal Standards	R.T.	QIon	Response	Conc	Units	Dev(Min)
1) Pentafluorobenzene	7.04	168	867889	50.00	ug/l	-0.01
34) 1,4-Difluorobenzene	8.22	114	1153716	50.00	ug/l	-0.01
63) Chlorobenzene-d5	12.37	117	836752	50.00	ug/l	-0.01
72) 1,4-Dichlorobenzene-d4	14.51	152	276777	50.00	ug/l	-0.01

System Monitoring Compounds

33) 1,2-Dichloroethane-d4	7.46	65	396125	42.70	ug/l	-0.01
Spiked Amount				50.000		
			Recovery	=		85.40%
35) Dibromofluoromethane	6.92	113	466981	48.06	ug/l	-0.01
Spiked Amount				50.000		
			Recovery	=		96.12%
50) Toluene-d8	10.41	98	826863	38.71	ug/l	-0.01
Spiked Amount				50.000		
			Recovery	=		77.42%
62) 4-Bromofluorobenzene	13.56	95	263542	27.22	ug/l	0.00
Spiked Amount				50.000		
			Recovery	=		54.44%

Target Compounds

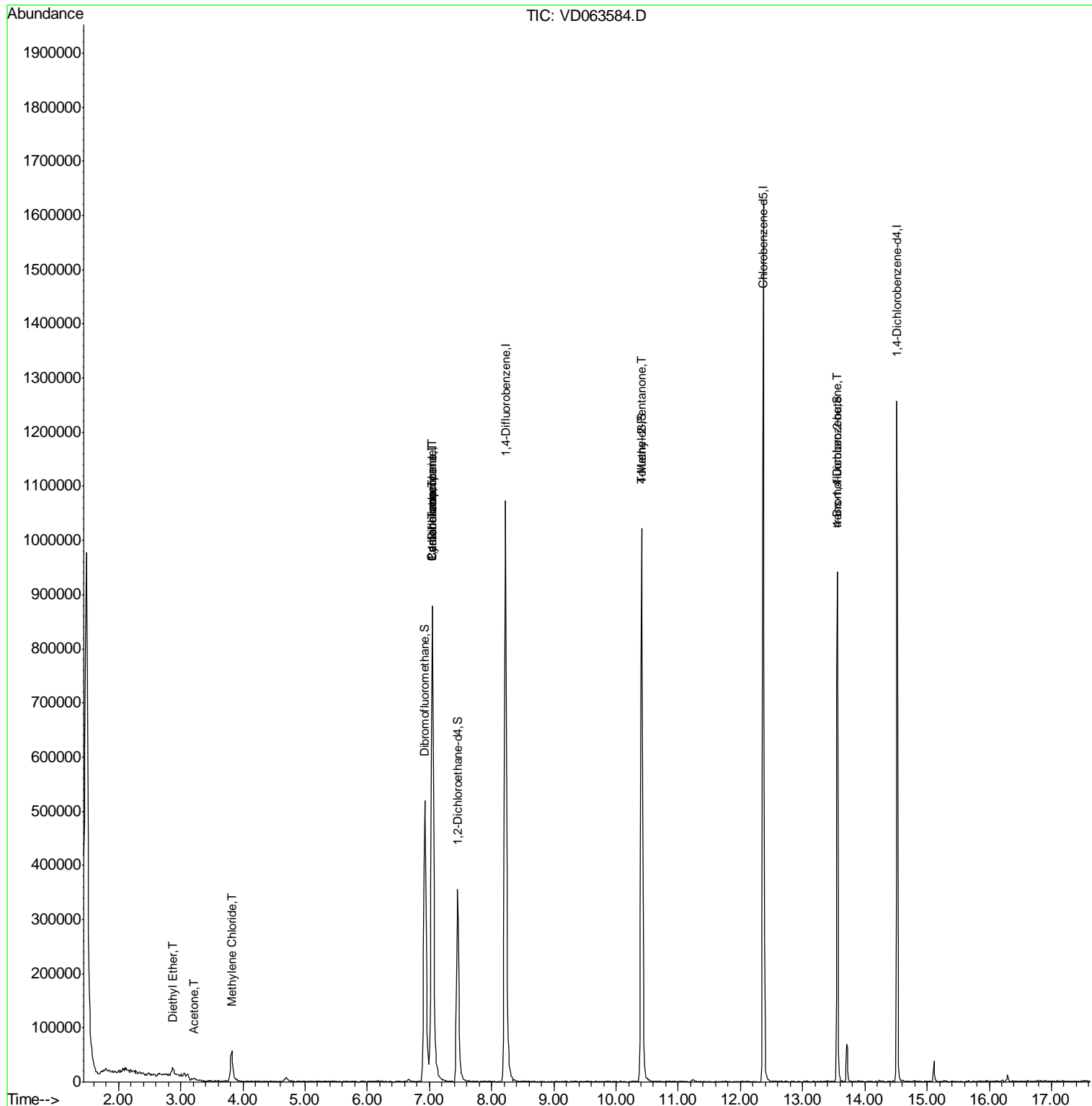
						Qvalue
8) Diethyl Ether	2.87	74	6505	2.884	ug/l	87
16) Acetone	3.21	43	9370	4.969	ug/l #	65
20) Methylene Chloride	3.82	84	38038	4.665	ug/l #	83
31) Cyclohexane	7.04	56	16154	1.928	ug/l #	1
36) 1,1-Dichloropropene	7.04	75	64170	6.292	ug/l #	54
38) Carbon Tetrachloride	7.05	117	83467	5.430	ug/l #	16
51) 4-Methyl-2-Pentanone	10.40	43	5340	1.363	ug/l #	1
81) trans-1,4-Dichloro-2-buten	13.56	75	119960	140.509	ug/l #	1

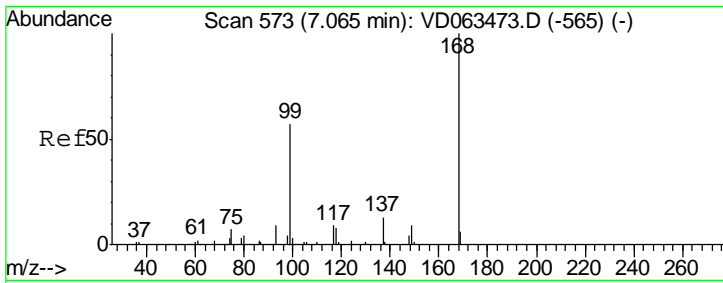
(#) = qualifier out of range (m) = manual integration (+) = signals summed

Data Path : Z:\VOASRV\HPCHEM1\MSVOA D\DATA\VD081419\
 Data File : VD063584.D
 Acq On : 14 Aug 2019 19:53
 Operator : JC/SY
 Sample : K4290-03RE
 Misc : 5.03µl/5ml/MSVOA D/SOIL
 ALS Vial : 24 Sample Multiplier: 1

Instrument :
 MSVOA_D
 ClientSampled :

Quant Time: Aug 15 12:02:13 2019
 Quant Method : Z:\VOASRV\HPCHEM1\MSVOA_D\METHOD\82D080919S.M
 Quant Title : SW846 8260
 QLast Update : Sat Aug 10 06:42:47 2019
 Response via : Initial Calibration

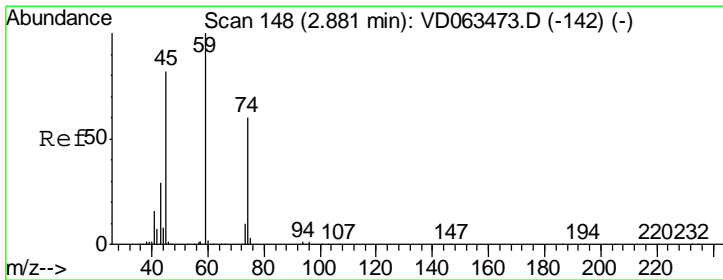
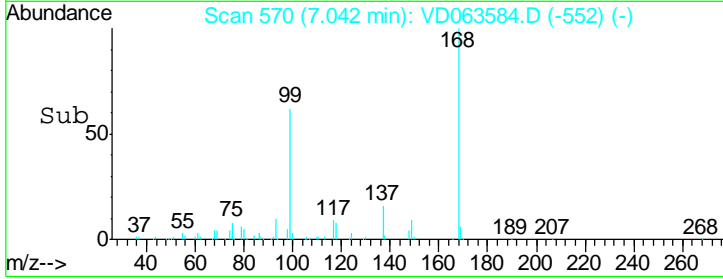
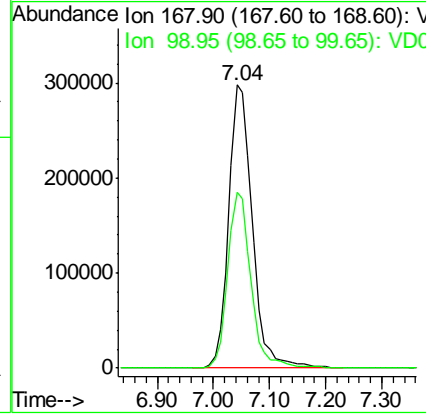
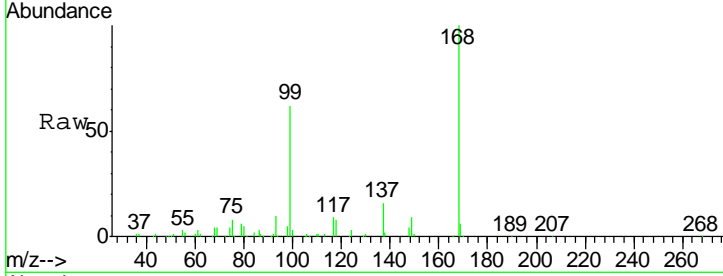




#1
 Pentafluorobenzene
 Concen: 50.000 ug/l
 RT: 7.04 min Scan# 570
 Delta R.T. -0.02 min
 Lab File: VD063584.D
 Acq: 14 Aug 2019 19:53

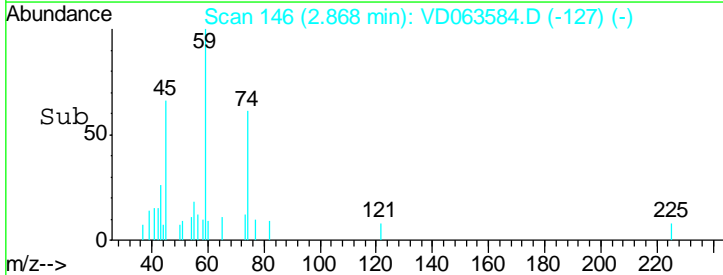
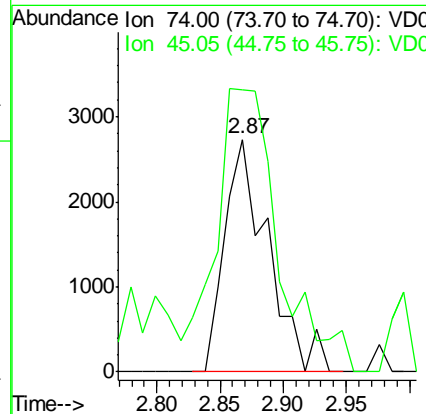
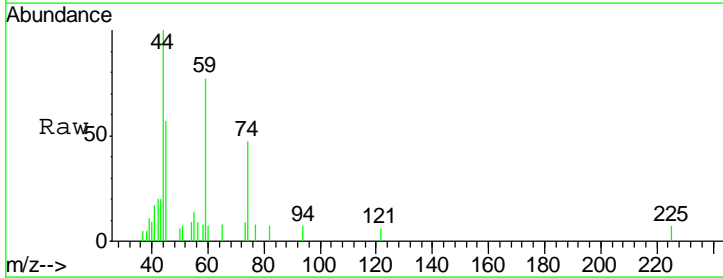
Instrument :
 MSVOA_D
 ClientSampled :

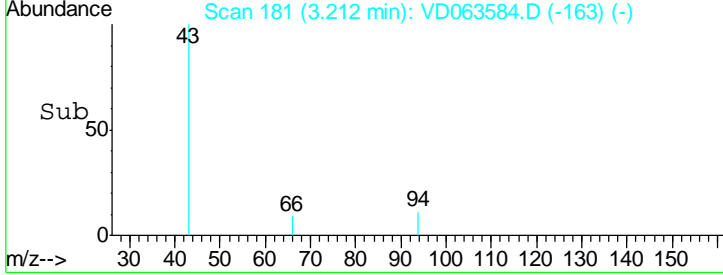
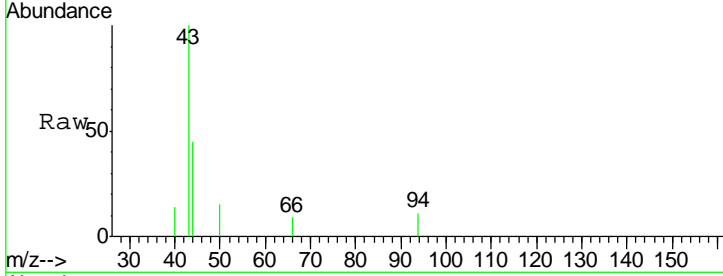
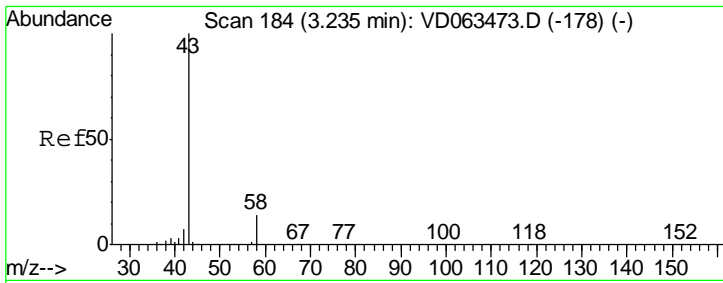
Tgt Ion	Resp	Lower	Upper
168	100		
99	62.4	46.7	70.1



#8
 Diethyl Ether
 Concen: 2.884 ug/l
 RT: 2.87 min Scan# 146
 Delta R.T. -0.01 min
 Lab File: VD063584.D
 Acq: 14 Aug 2019 19:53

Tgt Ion	Resp	Lower	Upper
74	100		
45	121.6	68.5	205.5

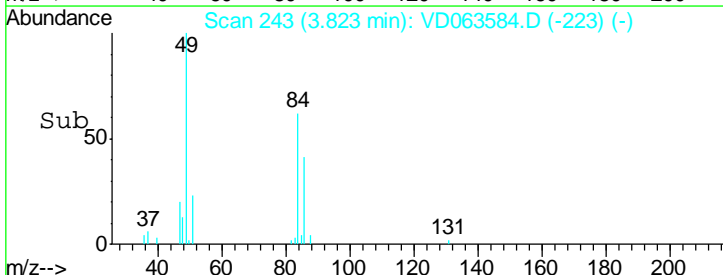
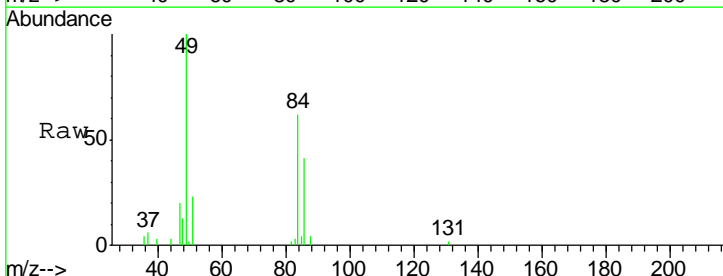
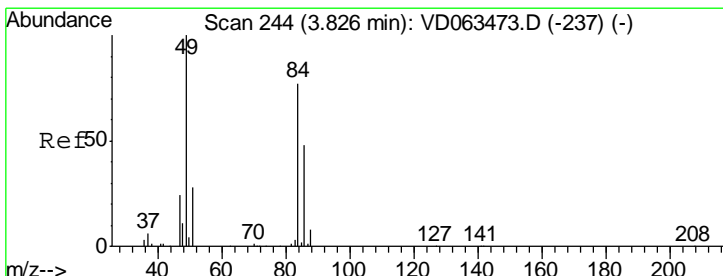
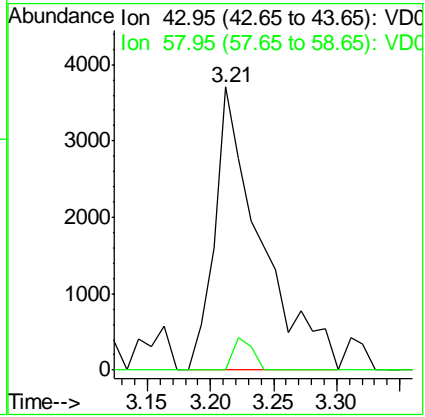




#16
 Acetone
 Concen: 4.969 ug/l
 RT: 3.21 min Scan# 181
 Delta R.T. -0.02 min
 Lab File: VD063584.D
 Acq: 14 Aug 2019 19:53

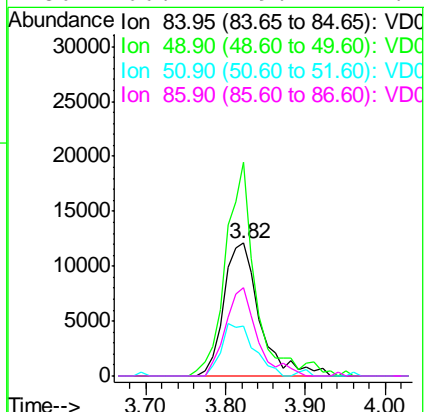
Instrument :
 MSVOA_D
 ClientSampled :

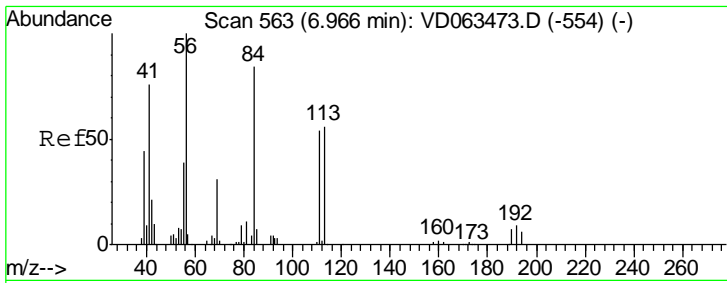
Tgt Ion	Resp	Lower	Upper
43	100		
58	0.0	11.4	17.2#



#20
 Methylene Chloride
 Concen: 4.665 ug/l
 RT: 3.82 min Scan# 243
 Delta R.T. -0.00 min
 Lab File: VD063584.D
 Acq: 14 Aug 2019 19:53

Tgt Ion	Resp	Lower	Upper
84	100		
49	160.5	103.4	155.2#
51	37.5	28.5	42.7
86	66.4	49.4	74.2

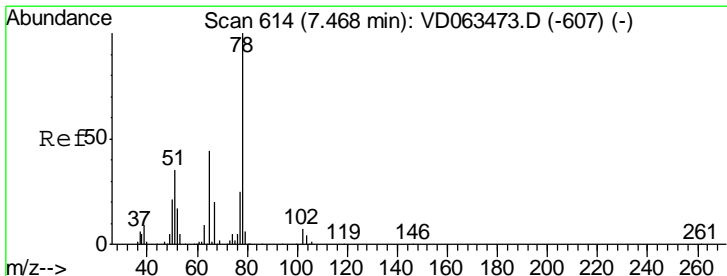
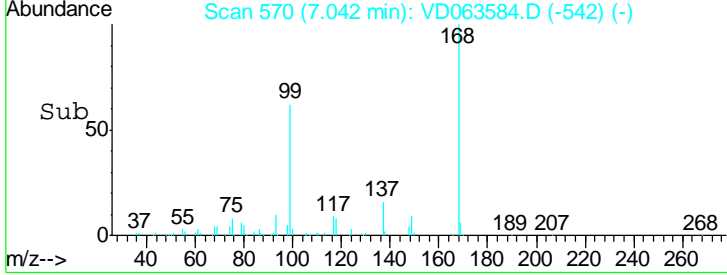
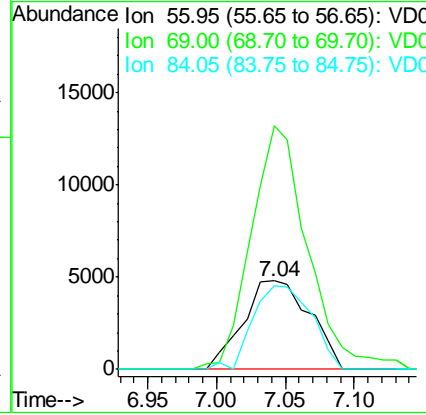
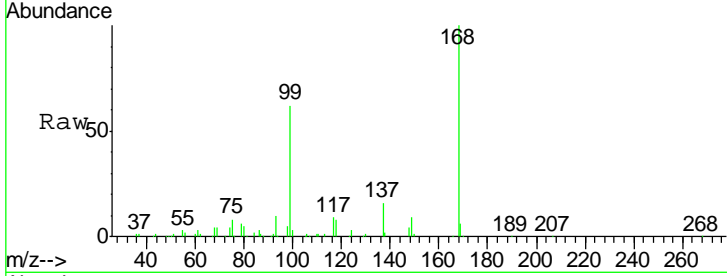




#31
 Cyclohexane
 Concen: 1.928 ug/l
 RT: 7.04 min Scan# 570
 Delta R.T. 0.08 min
 Lab File: VD063584.D
 Acq: 14 Aug 2019 19:53

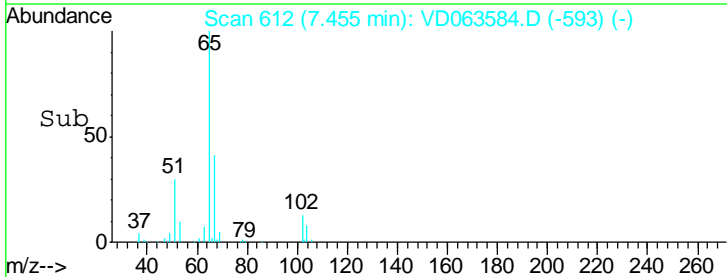
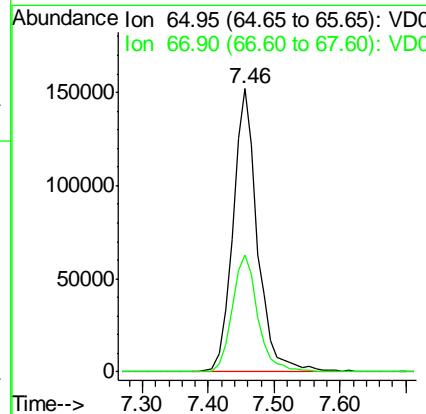
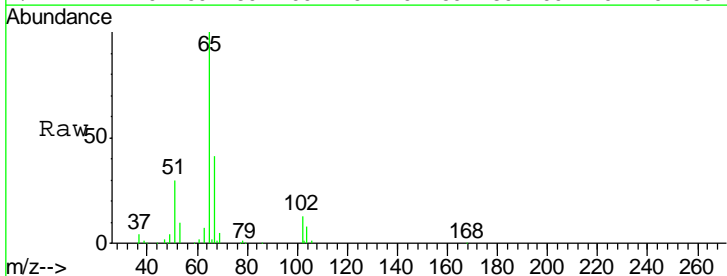
Instrument :
 MSVOA_D
 ClientSampled :

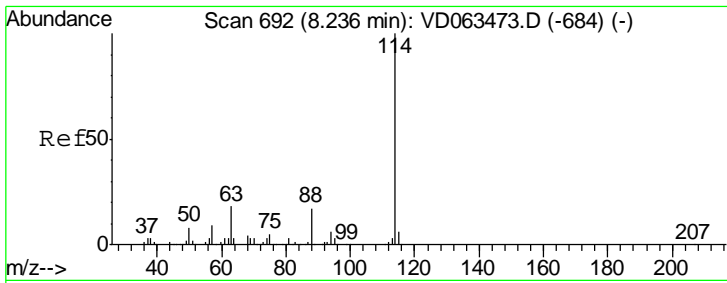
Tgt Ion	Resp	Lower	Upper
56	16154		
69	274.5	25.0	37.6#
84	95.0	69.7	104.5



#33
 1,2-Dichloroethane-d4
 Concen: 42.699 ug/l
 RT: 7.46 min Scan# 612
 Delta R.T. -0.01 min
 Lab File: VD063584.D
 Acq: 14 Aug 2019 19:53

Tgt Ion	Resp	Lower	Upper
65	396125		
67	41.3	0.0	89.2

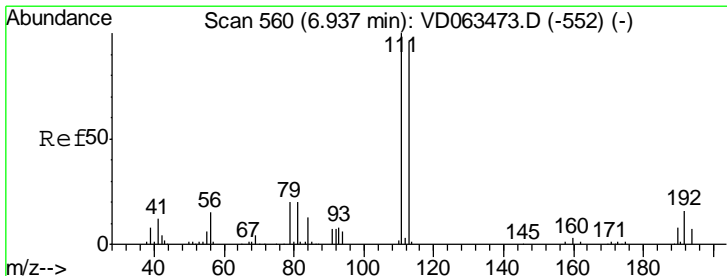
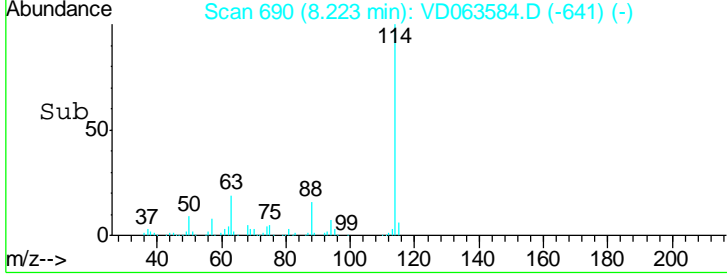
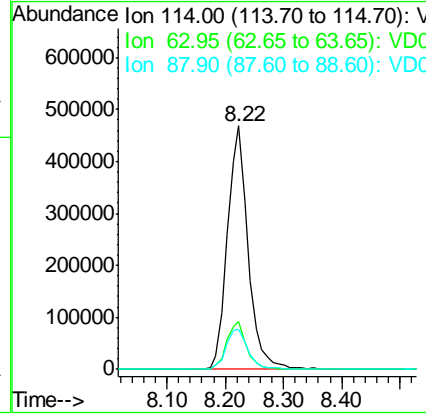
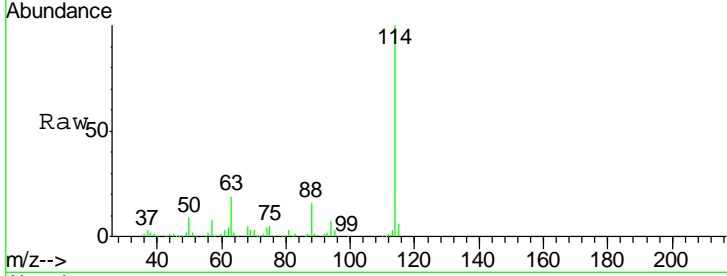




#34
 1,4-Difluorobenzene
 Concen: 50.000 ug/l
 RT: 8.22 min Scan# 690
 Delta R.T. -0.01 min
 Lab File: VD063584.D
 Acq: 14 Aug 2019 19:53

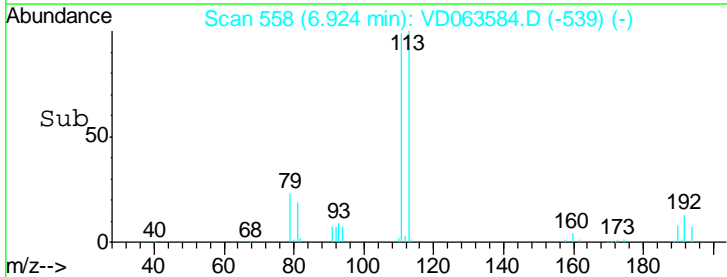
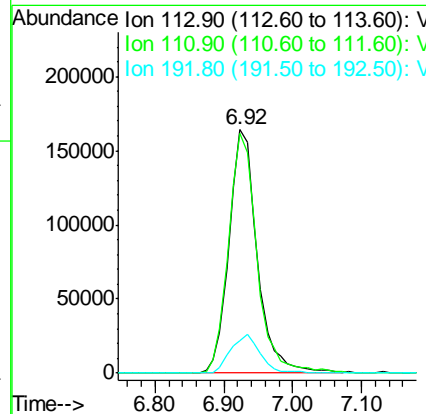
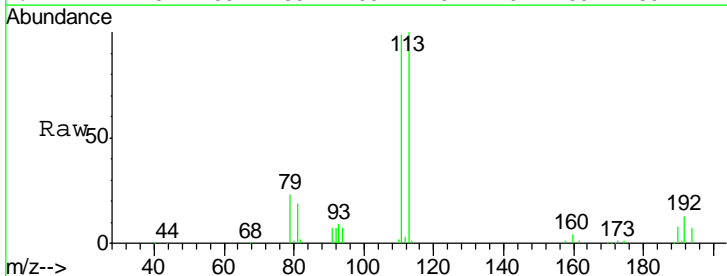
Instrument :
 MSVOA_D
 ClientSampled :

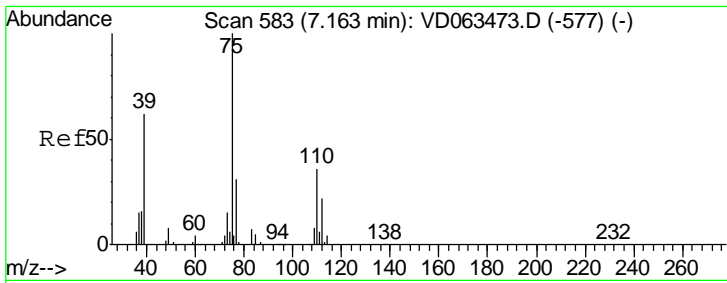
Tgt Ion	Resp	Lower	Upper
114	1153716		
63	19.5	0.0	36.2
88	16.4	0.0	35.0



#35
 Dibromofluoromethane
 Concen: 48.060 ug/l
 RT: 6.92 min Scan# 558
 Delta R.T. -0.01 min
 Lab File: VD063584.D
 Acq: 14 Aug 2019 19:53

Tgt Ion	Resp	Lower	Upper
113	466981		
111	98.5	83.1	124.7
192	13.4	13.1	19.7

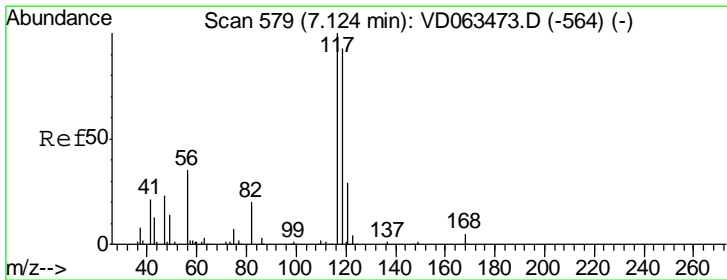
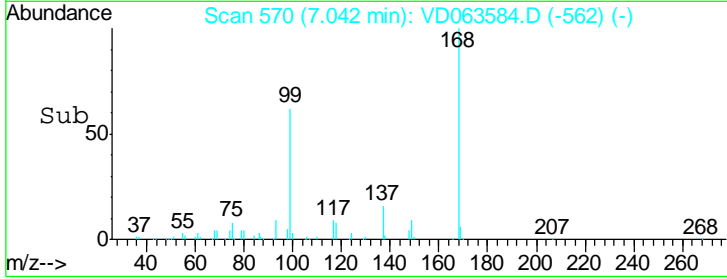
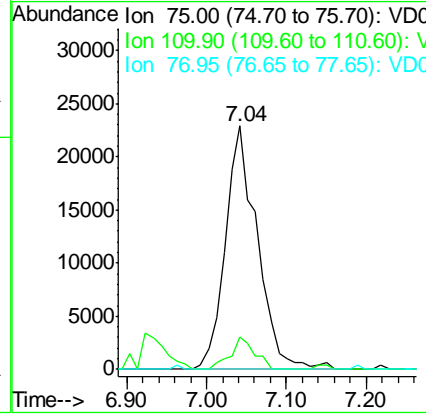
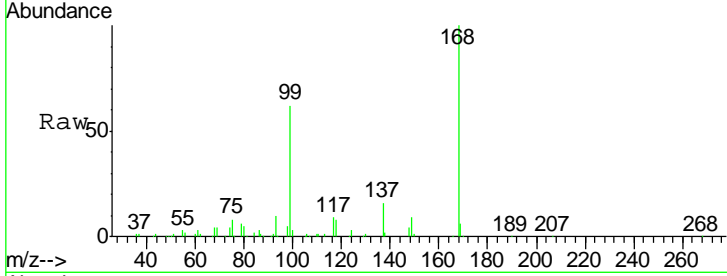




#36
 1,1-Dichloropropene
 Concen: 6.292 ug/l
 RT: 7.04 min Scan# 570
 Delta R.T. -0.12 min
 Lab File: VD063584.D
 Acq: 14 Aug 2019 19:53

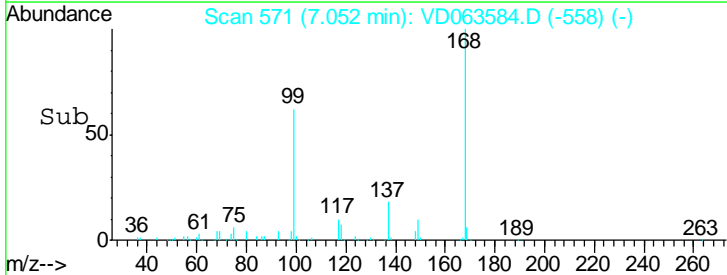
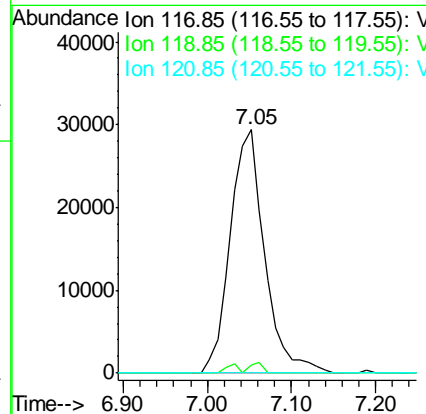
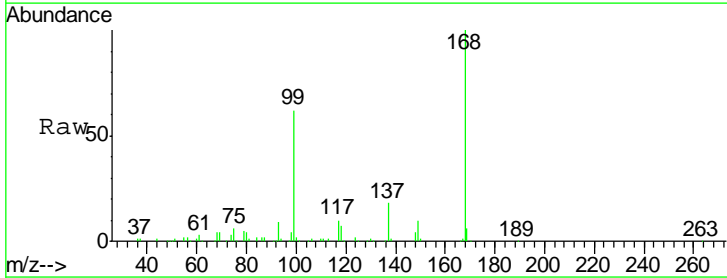
Instrument :
 MSVOA_D
 ClientSampled :

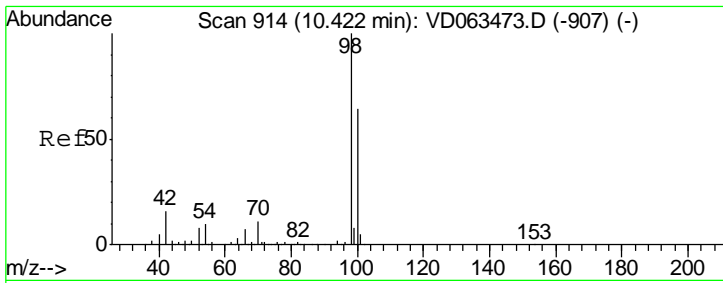
Tgt Ion	Resp	Lower	Upper
75	100		
110	13.1	17.6	52.8#
77	0.0	24.3	36.5#



#38
 Carbon Tetrachloride
 Concen: 5.430 ug/l
 RT: 7.05 min Scan# 571
 Delta R.T. -0.07 min
 Lab File: VD063584.D
 Acq: 14 Aug 2019 19:53

Tgt Ion	Resp	Lower	Upper
117	100		
119	3.5	74.2	111.2#
121	0.0	23.1	34.7#

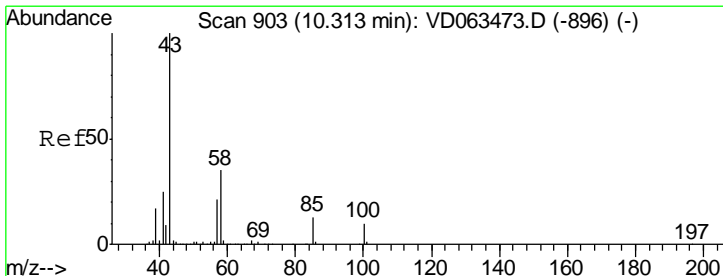
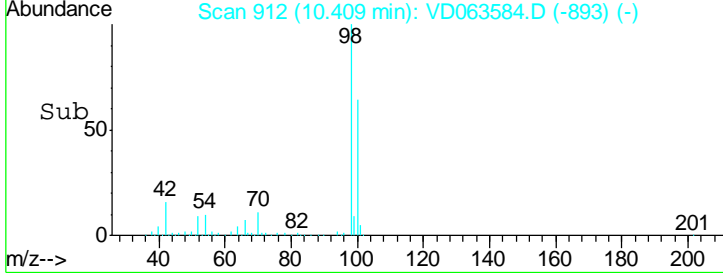
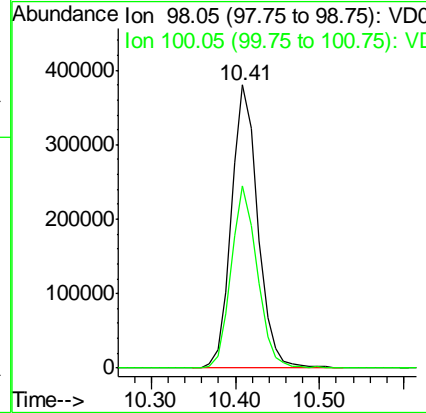
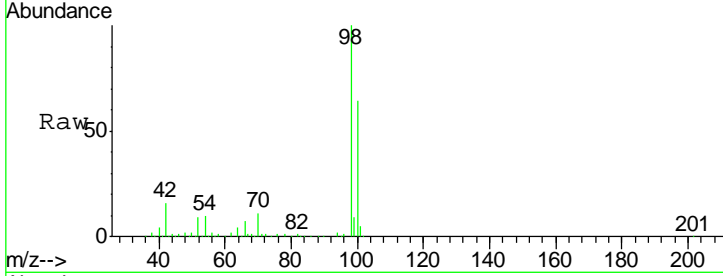




#50
 Toluene-d8
 Concen: 38.706 ug/l
 RT: 10.41 min Scan# 912
 Delta R.T. -0.01 min
 Lab File: VD063584.D
 Acq: 14 Aug 2019 19:53

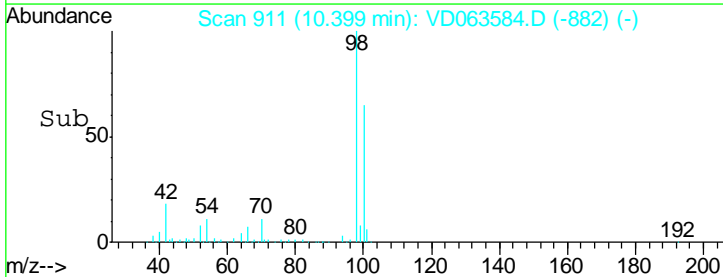
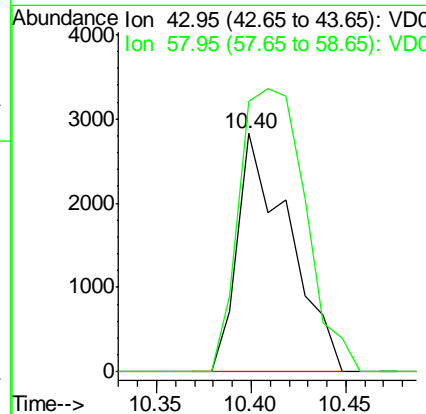
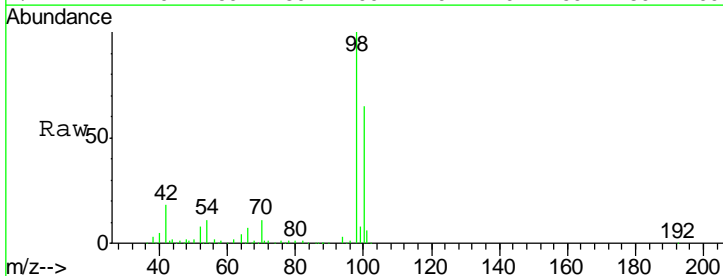
Instrument :
 MSVOA_D
 ClientSampled :

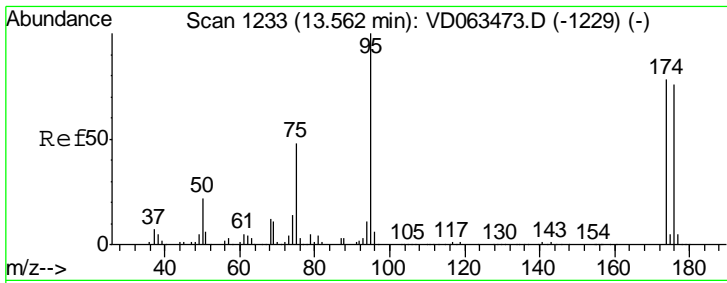
Tgt Ion: 98 Resp: 826863
 Ion Ratio Lower Upper
 98 100
 100 64.3 51.7 77.5



#51
 4-Methyl-2-Pentanone
 Concen: 1.363 ug/l
 RT: 10.40 min Scan# 911
 Delta R.T. 0.09 min
 Lab File: VD063584.D
 Acq: 14 Aug 2019 19:53

Tgt Ion: 43 Resp: 5340
 Ion Ratio Lower Upper
 43 100
 58 113.5 28.0 42.0#

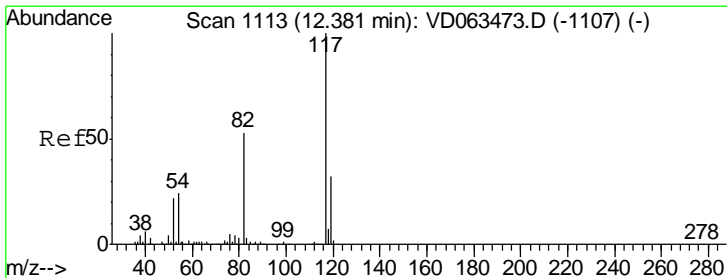
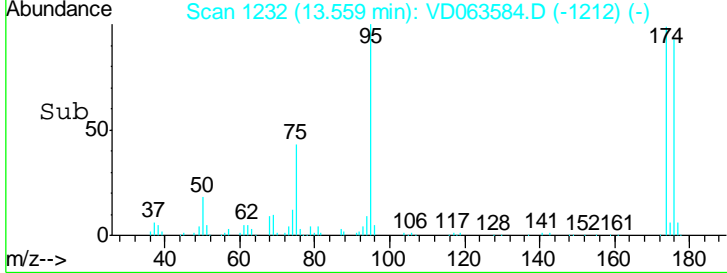
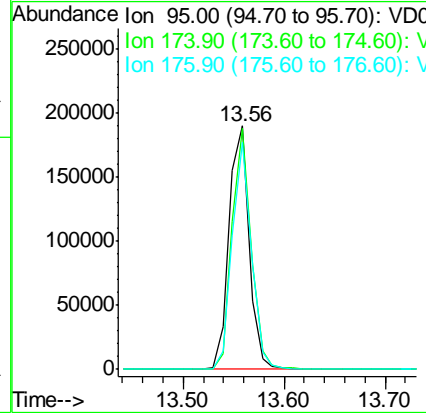
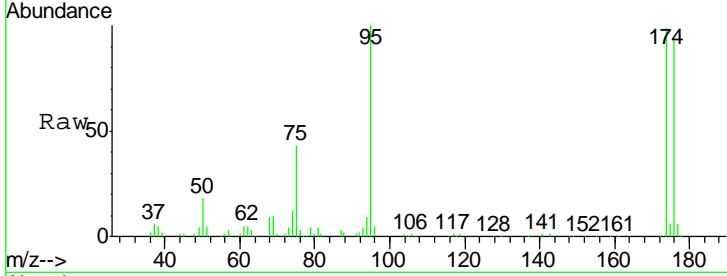




#62
 4-Bromofluorobenzene
 Concen: 27.219 ug/l
 RT: 13.56 min Scan# 1232
 Delta R.T. -0.00 min
 Lab File: VD063584.D
 Acq: 14 Aug 2019 19:53

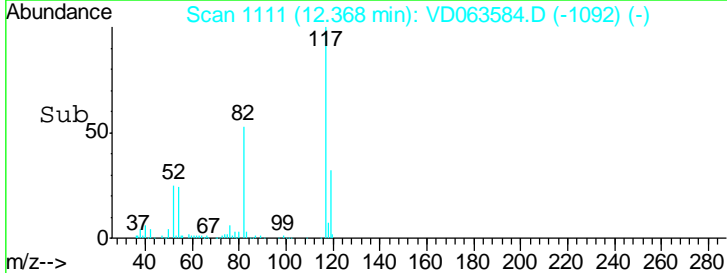
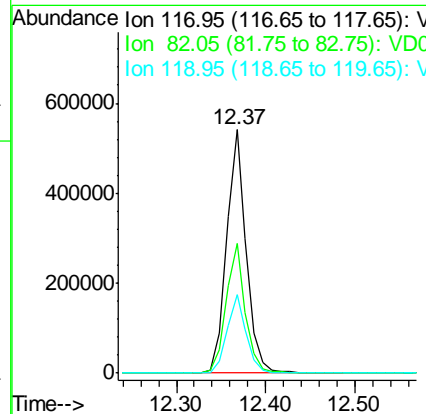
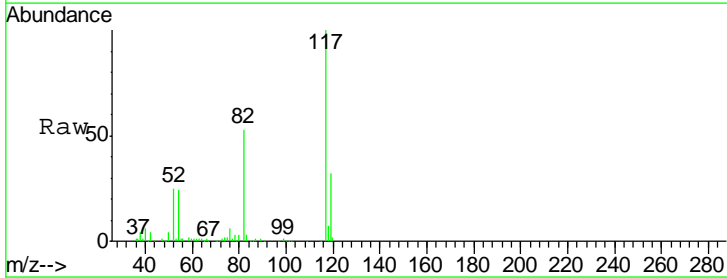
Instrument :
 MSVOA_D
 ClientSampled :

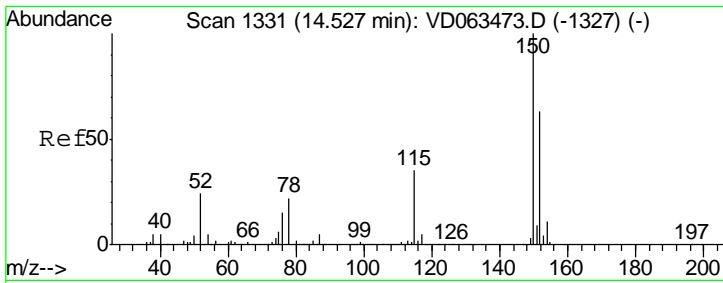
Tgt Ion	Resp	Lower	Upper
95	100		
174	98.9	0.0	155.4
176	93.0	0.0	152.4



#63
 Chlorobenzene-d5
 Concen: 50.000 ug/l
 RT: 12.37 min Scan# 1111
 Delta R.T. -0.01 min
 Lab File: VD063584.D
 Acq: 14 Aug 2019 19:53

Tgt Ion	Resp	Lower	Upper
117	100		
82	53.4	42.0	63.0
119	32.3	25.4	38.0

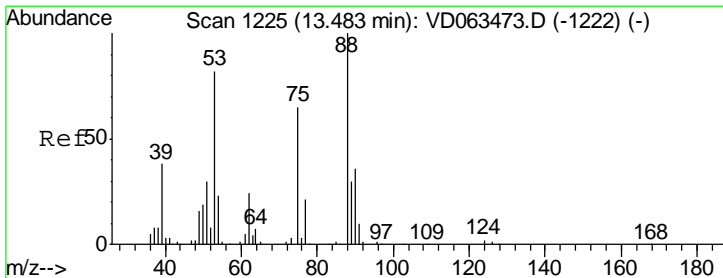
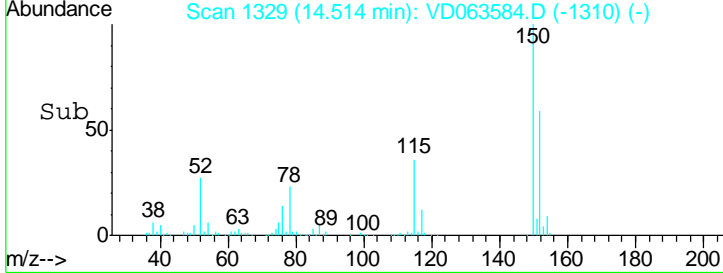
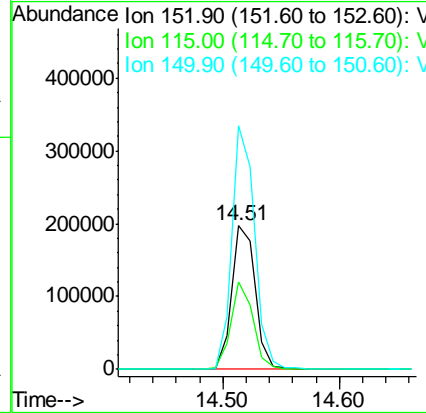
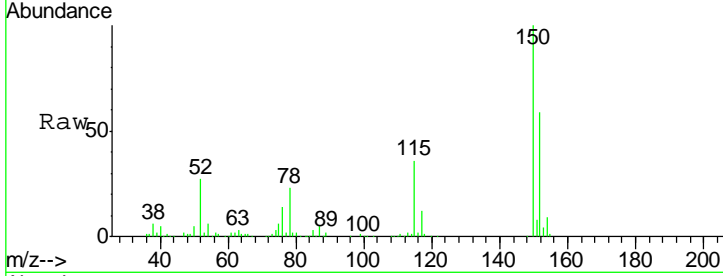




#72
 1,4-Dichlorobenzene-d4
 Concen: 50.000 ug/l
 RT: 14.51 min Scan# 1329
 Delta R.T. -0.01 min
 Lab File: VD063584.D
 Acq: 14 Aug 2019 19:53

Instrument :
 MSVOA_D
 ClientSampled :

Tgt Ion	Resp	Lower	Upper
152	100		
115	60.6	30.9	92.7
150	169.4	0.0	318.6



#81
 trans-1,4-Dichloro-2-butene
 Concen: 140.509 ug/l
 RT: 13.56 min Scan# 1232
 Delta R.T. 0.08 min
 Lab File: VD063584.D
 Acq: 14 Aug 2019 19:53

Tgt Ion	Resp	Lower	Upper
75	100		
53	0.0	101.0	151.4#
89	0.0	37.0	55.6#

