

Data Path : Z:\VOASRV\HPCHEM1\MSVOA D\DATA\VD081419\  
 Data File : VD063585.D  
 Acq On : 14 Aug 2019 20:20  
 Operator : JC/SY  
 Sample : K4290-04RE  
 Misc : 5.06µ/5ml/MSVOA D/SOIL  
 ALS Vial : 25 Sample Multiplier: 1

Instrument :  
 MSVOA\_D  
 ClientSampleId :

Quant Time: Aug 15 12:02:26 2019  
 Quant Method : Z:\VOASRV\HPCHEM1\MSVOA\_D\METHOD\82D080919S.M  
 Quant Title : SW846 8260  
 QLast Update : Sat Aug 10 06:42:47 2019  
 Response via : Initial Calibration

Internal Standards	R.T.	QIon	Response	Conc	Units	Dev(Min)
1) Pentafluorobenzene	7.05	168	420789	50.00	µg/l	-0.02
34) 1,4-Difluorobenzene	8.22	114	566607	50.00	µg/l	-0.02
63) Chlorobenzene-d5	12.36	117	192926	50.00	µg/l	-0.02
72) 1,4-Dichlorobenzene-d4	14.52	152	14408	50.00	µg/l	0.00

System Monitoring Compounds

33) 1,2-Dichloroethane-d4	7.45	65	264386	58.78	µg/l	-0.02
Spiked Amount				50.000		
			Recovery	=		117.56%
35) Dibromofluoromethane	6.92	113	306090	64.14	µg/l	-0.02
Spiked Amount				50.000		
			Recovery	=		128.28%
50) Toluene-d8	10.40	98	304438	29.02	µg/l	-0.02
Spiked Amount				50.000		
			Recovery	=		58.04%
62) 4-Bromofluorobenzene	13.55	95	24103	5.07	µg/l	0.00
Spiked Amount				50.000		
			Recovery	=		10.14%

Target Compounds

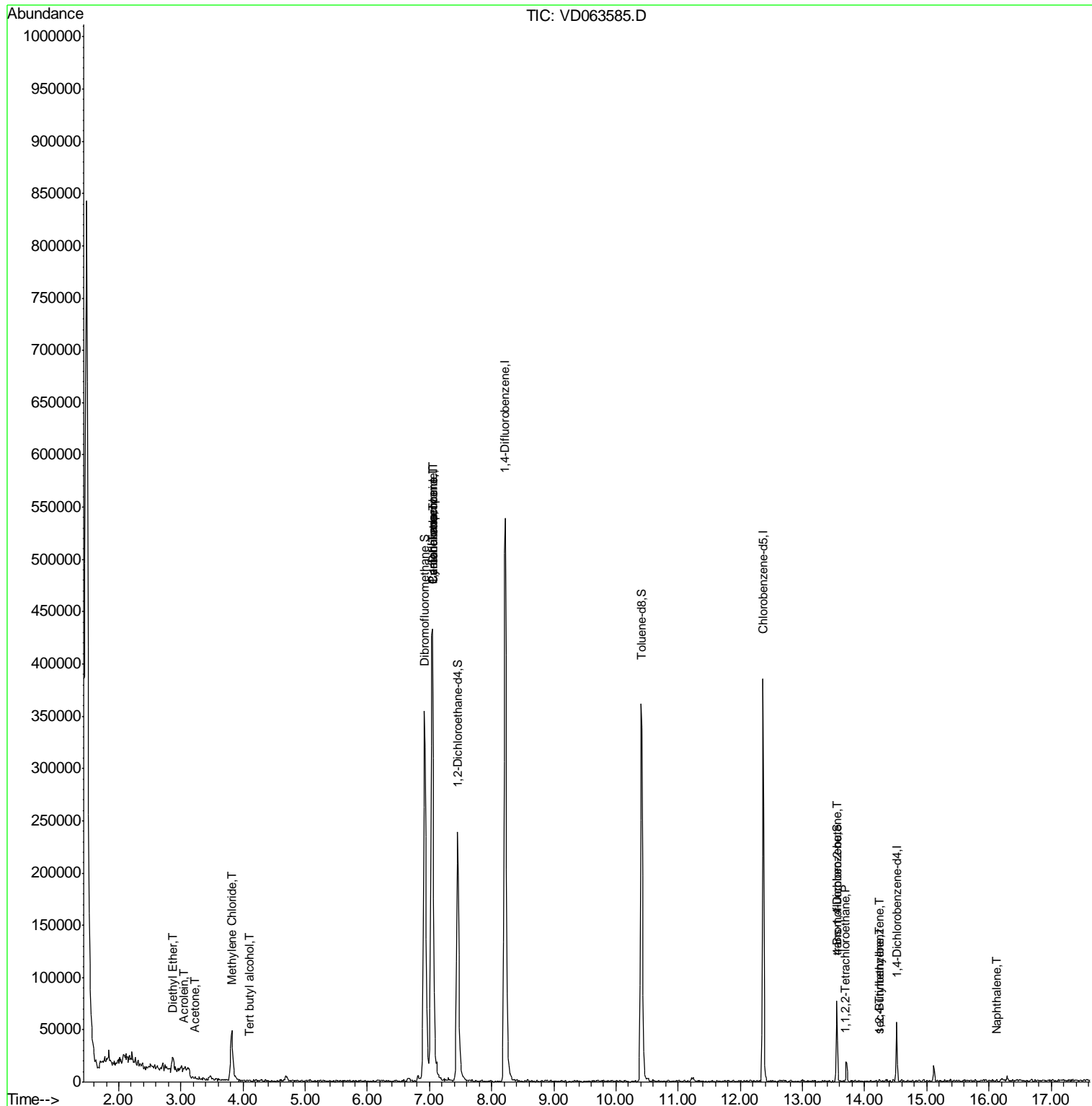
						Qvalue
8) Diethyl Ether	2.87	74	4362	3.989	µg/l	64
11) Tert butyl alcohol	4.08	59	226	1.154	µg/l #	71
13) Acrolein	3.05	56	266	1.380	µg/l #	18
16) Acetone	3.23	43	3984	4.357	µg/l #	65
20) Methylene Chloride	3.82	84	27081	6.850	µg/l #	89
31) Cyclohexane	7.04	56	8927	2.198	µg/l #	24
36) 1,1-Dichloropropene	7.04	75	35023	6.992	µg/l #	49
38) Carbon Tetrachloride	7.05	117	40026	5.302	µg/l #	20
75) 1,1,2,2-Tetrachloroethane	13.68	83	198	1.302	µg/l #	26
81) trans-1,4-Dichloro-2-buten	13.55	75	10671	240.103	µg/l #	1
84) 1,2,4-Trimethylbenzene	14.23	105	984	1.328	µg/l #	31
85) sec-Butylbenzene	14.23	105	984	1.099	µg/l #	62
95) Naphthalene	16.12	128	1169	2.727	µg/l #	71

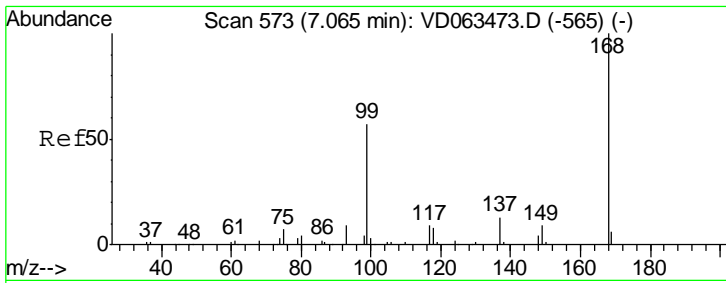
(#) = qualifier out of range (m) = manual integration (+) = signals summed

Data Path : Z:\VOASRV\HPCHEM1\MSVOA D\DATA\VD081419\  
 Data File : VD063585.D  
 Acq On : 14 Aug 2019 20:20  
 Operator : JC/SY  
 Sample : K4290-04RE  
 Misc : 5.06µ/5ml/MSVOA D/SOIL  
 ALS Vial : 25 Sample Multiplier: 1

Instrument :  
 MSVOA\_D  
 ClientSampleId :

Quant Time: Aug 15 12:02:26 2019  
 Quant Method : Z:\VOASRV\HPCHEM1\MSVOA\_D\METHOD\82D080919S.M  
 Quant Title : SW846 8260  
 QLast Update : Sat Aug 10 06:42:47 2019  
 Response via : Initial Calibration

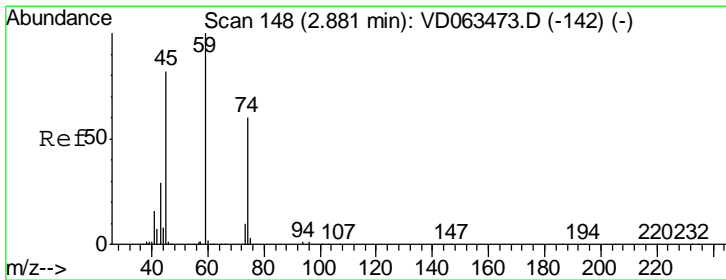
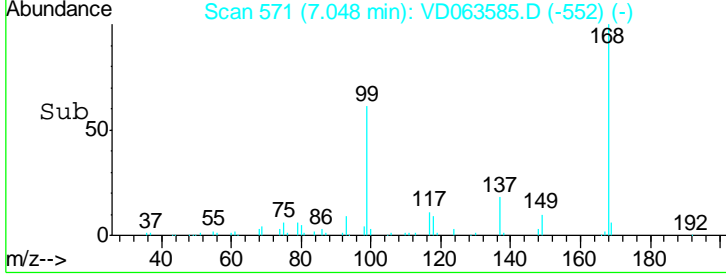
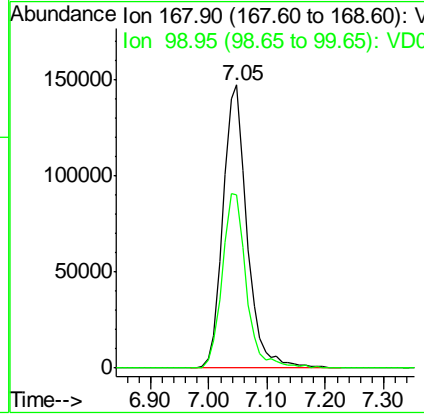
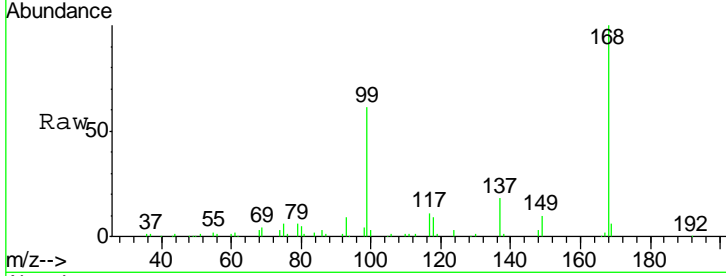




#1  
 Pentafluorobenzene  
 Concen: 50.000 ug/l  
 RT: 7.05 min Scan# 571  
 Delta R.T. -0.02 min  
 Lab File: VD063585.D  
 Acq: 14 Aug 2019 20:20

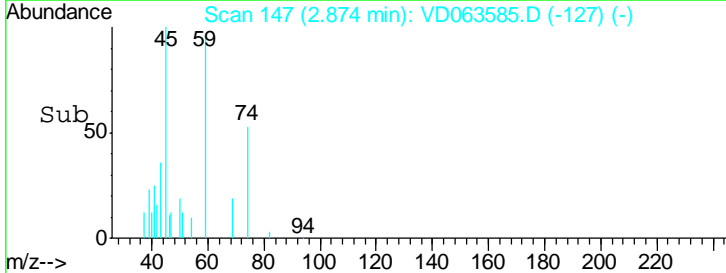
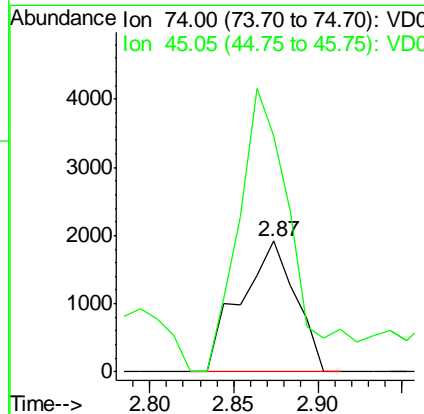
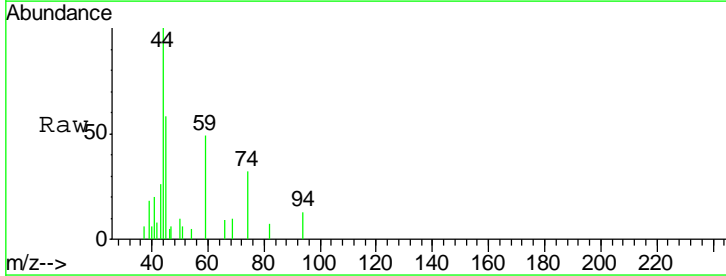
Instrument :  
 MSVOA\_D  
 ClientSampled :

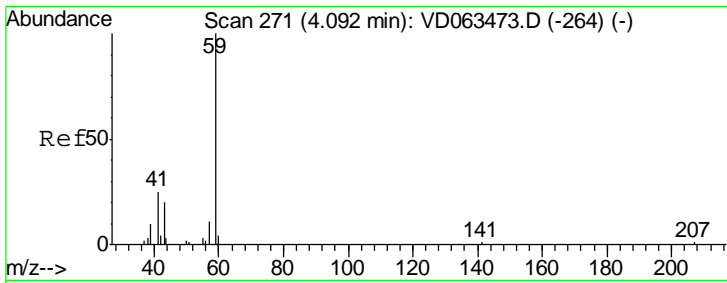
Tgt Ion: 168 Resp: 420789  
 Ion Ratio Lower Upper  
 168 100  
 99 61.1 46.7 70.1



#8  
 Diethyl Ether  
 Concen: 3.989 ug/l  
 RT: 2.87 min Scan# 147  
 Delta R.T. -0.01 min  
 Lab File: VD063585.D  
 Acq: 14 Aug 2019 20:20

Tgt Ion: 74 Resp: 4362  
 Ion Ratio Lower Upper  
 74 100  
 45 180.8 68.5 205.5

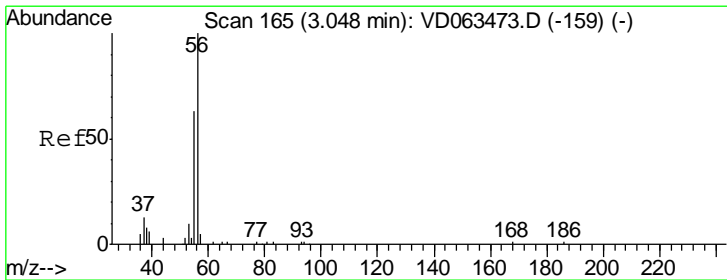
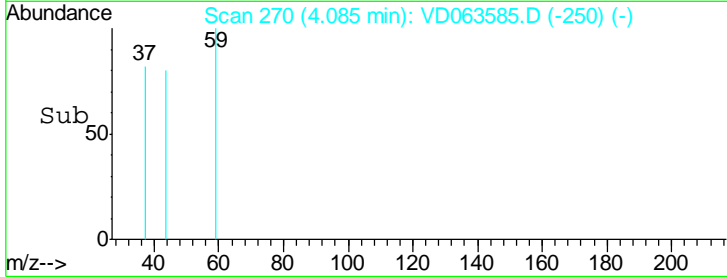
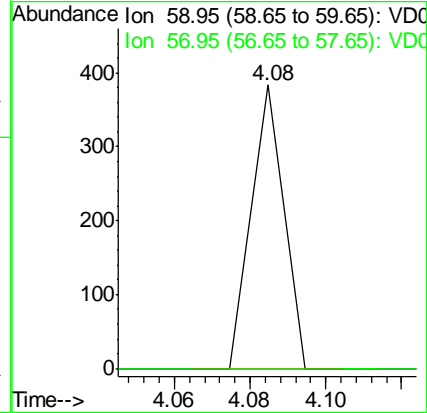
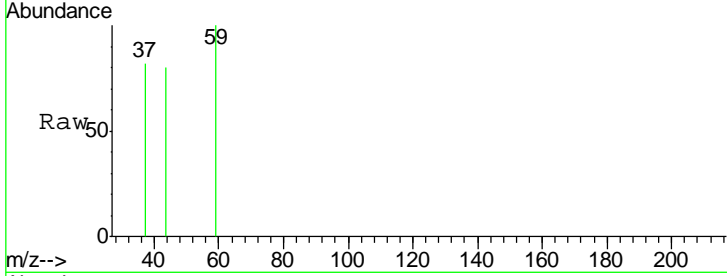




#11  
 Tert butyl alcohol  
 Concen: 1.154 ug/l  
 RT: 4.08 min Scan# 270  
 Delta R.T. -0.01 min  
 Lab File: VD063585.D  
 Acq: 14 Aug 2019 20:20

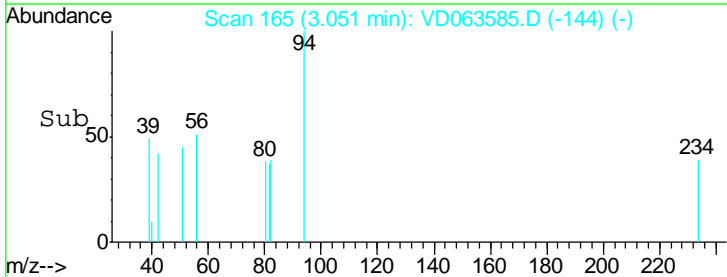
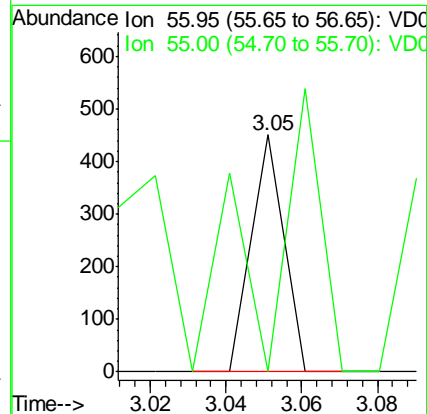
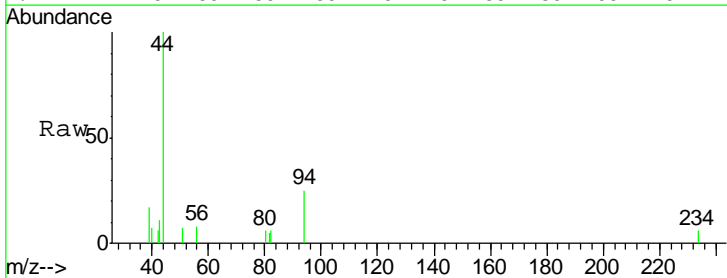
Instrument :  
 MSVOA\_D  
 ClientSampled :

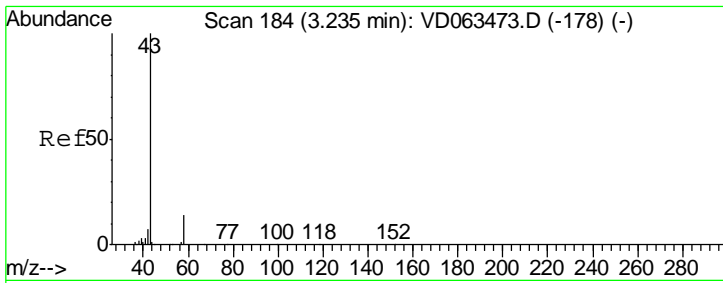
Tgt Ion: 59 Resp: 226  
 Ion Ratio Lower Upper  
 59 100  
 57 0.0 8.7 13.1#



#13  
 Acrolein  
 Concen: 1.380 ug/l  
 RT: 3.05 min Scan# 165  
 Delta R.T. 0.00 min  
 Lab File: VD063585.D  
 Acq: 14 Aug 2019 20:20

Tgt Ion: 56 Resp: 266  
 Ion Ratio Lower Upper  
 56 100  
 55 0.0 51.3 76.9#

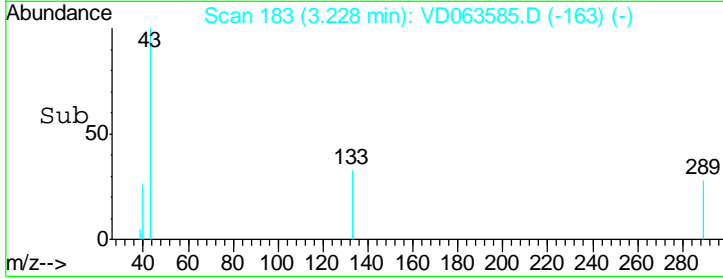
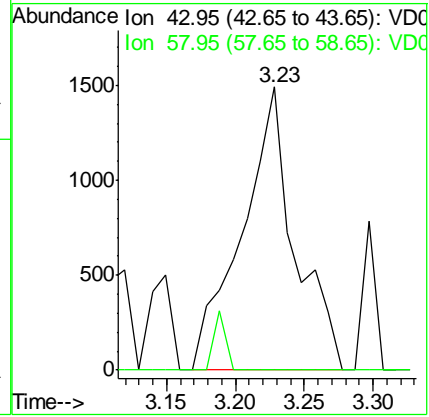
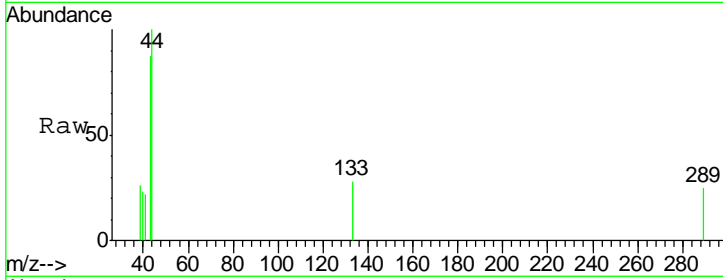




#16  
 Acetone  
 Concen: 4.357 ug/l  
 RT: 3.23 min Scan# 183  
 Delta R.T. -0.01 min  
 Lab File: VD063585.D  
 Acq: 14 Aug 2019 20:20

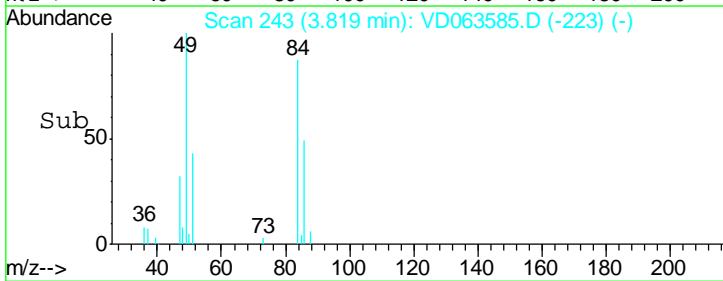
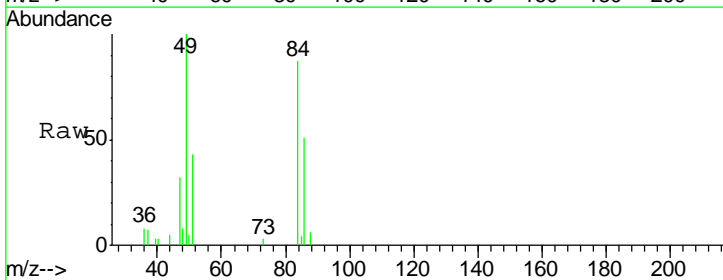
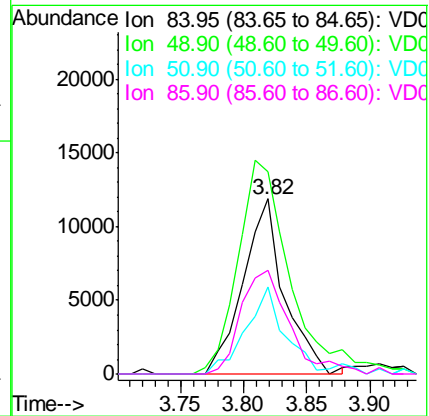
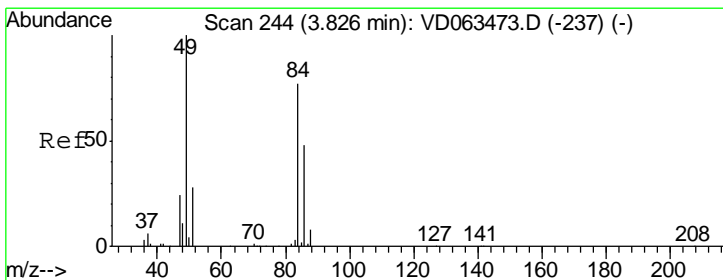
Instrument : MSVOA\_D  
 ClientSampled :

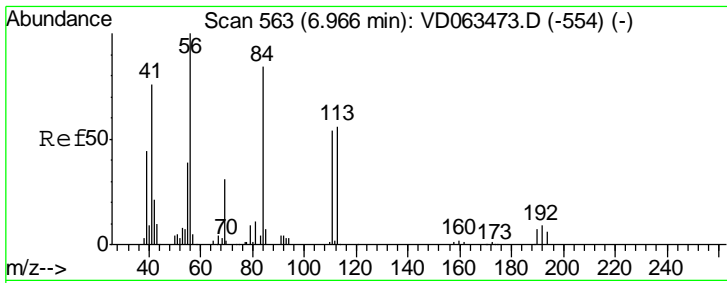
Tgt Ion	Resp	Lower	Upper
43	100		
58	0.0	11.4	17.2#



#20  
 Methylene Chloride  
 Concen: 6.850 ug/l  
 RT: 3.82 min Scan# 243  
 Delta R.T. -0.01 min  
 Lab File: VD063585.D  
 Acq: 14 Aug 2019 20:20

Tgt Ion	Resp	Lower	Upper
84	100		
49	115.6	103.4	155.2
51	49.5	28.5	42.7#
86	59.4	49.4	74.2

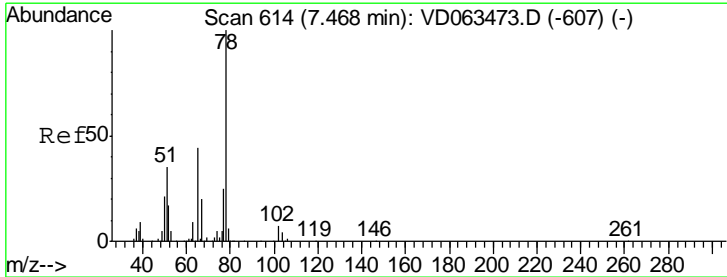
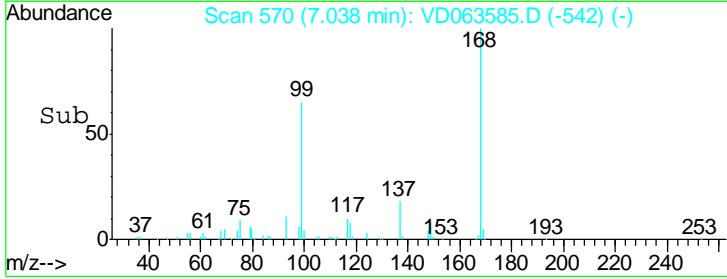
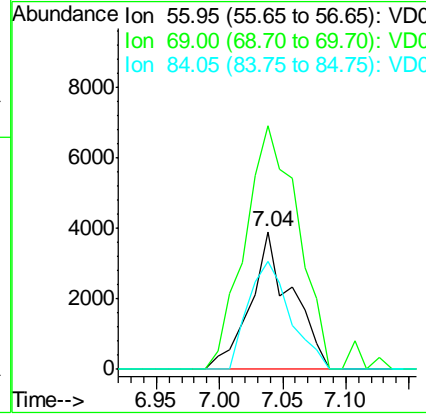
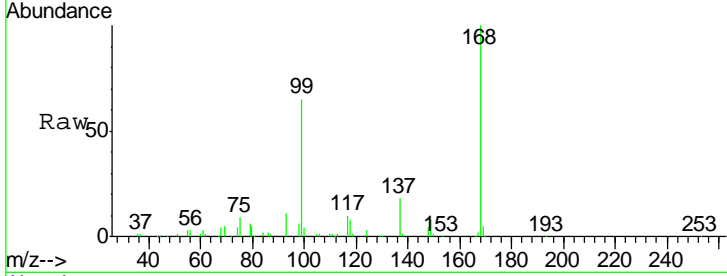




#31  
 Cyclohexane  
 Concen: 2.198 ug/l  
 RT: 7.04 min Scan# 570  
 Delta R.T. 0.07 min  
 Lab File: VD063585.D  
 Acq: 14 Aug 2019 20:20

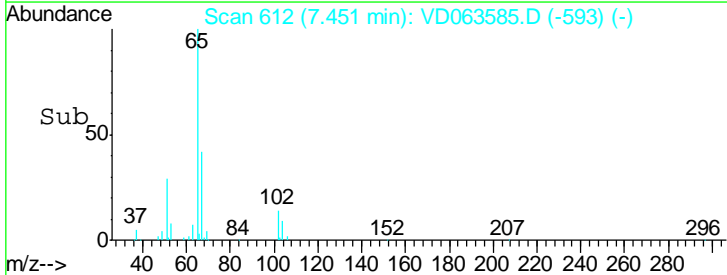
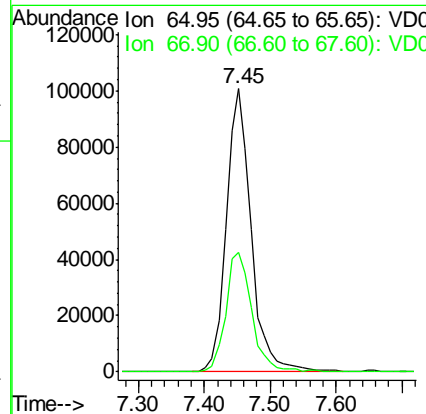
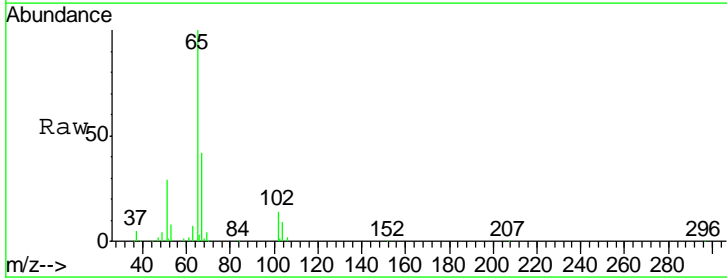
Instrument :  
 MSVOA\_D  
 ClientSampled :

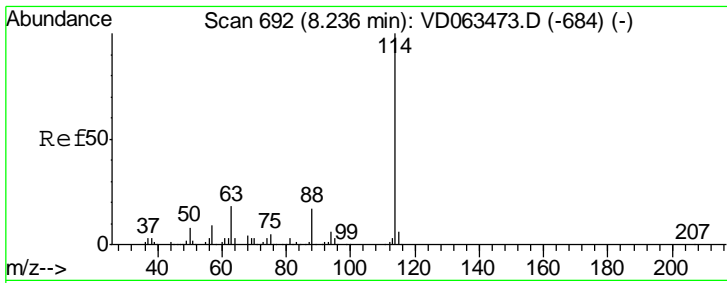
Tgt Ion	Resp	Lower	Upper
56	100		
69	176.5	25.0	37.6#
84	78.4	69.7	104.5



#33  
 1,2-Dichloroethane-d4  
 Concen: 58.780 ug/l  
 RT: 7.45 min Scan# 612  
 Delta R.T. -0.02 min  
 Lab File: VD063585.D  
 Acq: 14 Aug 2019 20:20

Tgt Ion	Resp	Lower	Upper
65	100		
67	42.2	0.0	89.2

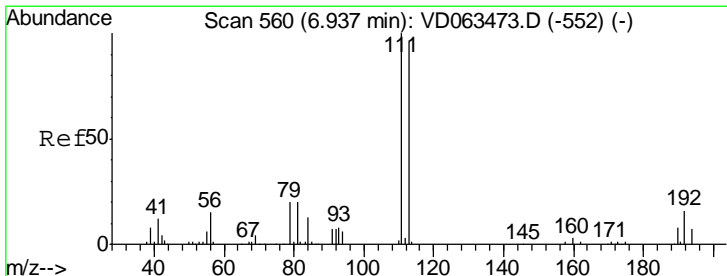
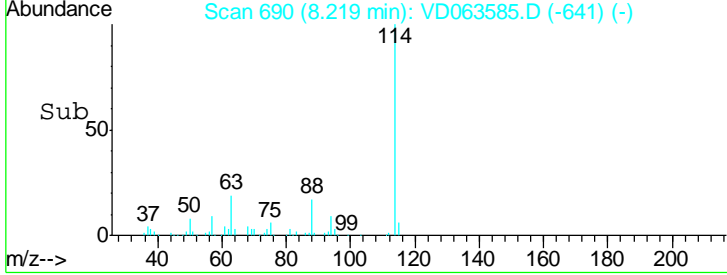
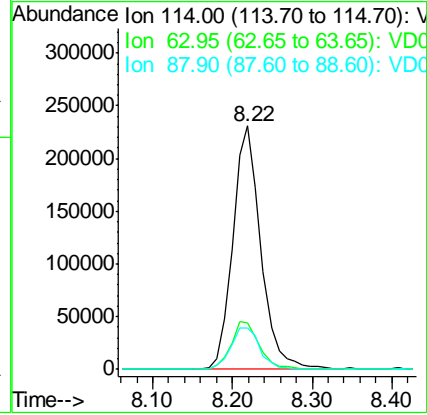
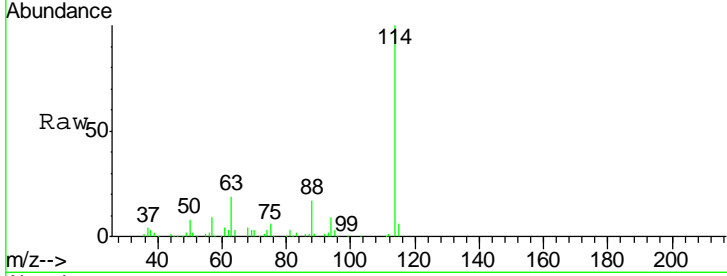




#34  
 1,4-Difluorobenzene  
 Concen: 50.000 ug/l  
 RT: 8.22 min Scan# 690  
 Delta R.T. -0.02 min  
 Lab File: VD063585.D  
 Acq: 14 Aug 2019 20:20

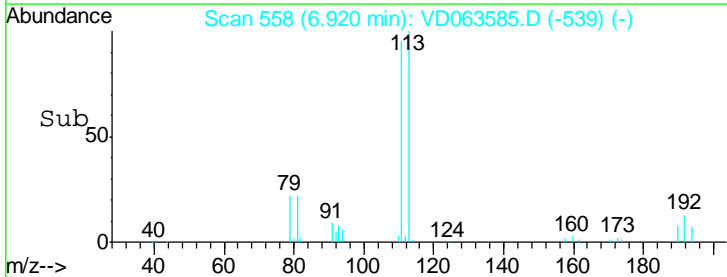
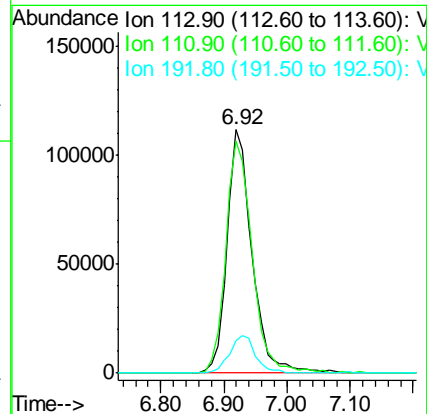
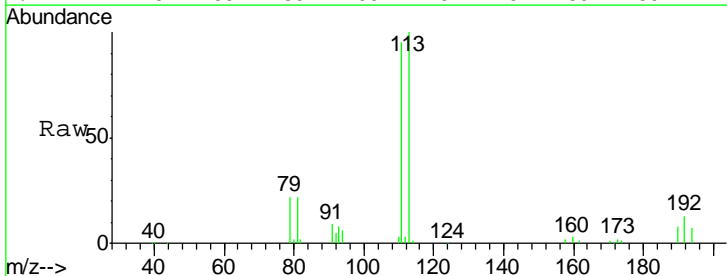
Instrument :  
 MSVOA\_D  
 ClientSampled :

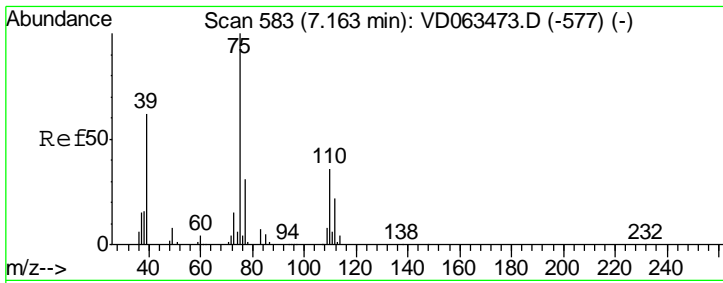
Tgt Ion	Resp	Lower	Upper
114	566607		
63	19.2	0.0	36.2
88	16.8	0.0	35.0



#35  
 Dibromofluoromethane  
 Concen: 64.143 ug/l  
 RT: 6.92 min Scan# 558  
 Delta R.T. -0.02 min  
 Lab File: VD063585.D  
 Acq: 14 Aug 2019 20:20

Tgt Ion	Resp	Lower	Upper
113	306090		
111	95.4	83.1	124.7
192	13.2	13.1	19.7

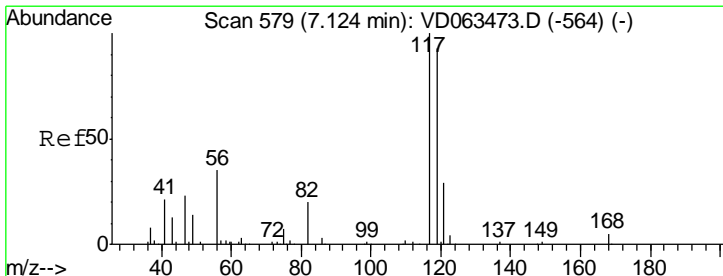
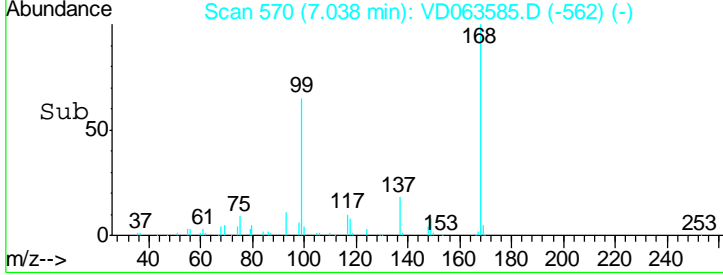
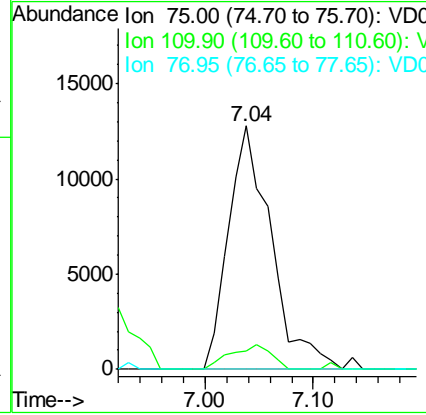
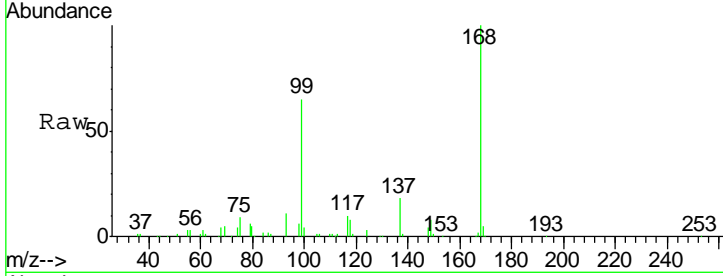




#36  
 1,1-Dichloropropene  
 Concen: 6.992 ug/l  
 RT: 7.04 min Scan# 570  
 Delta R.T. -0.13 min  
 Lab File: VD063585.D  
 Acq: 14 Aug 2019 20:20

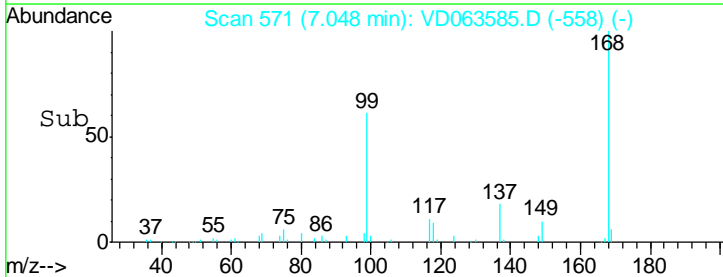
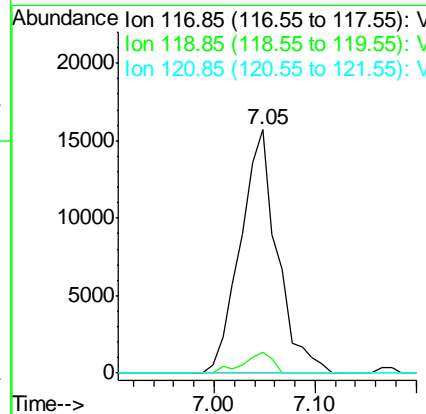
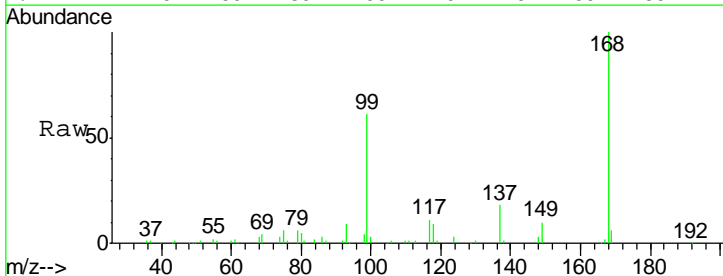
Instrument :  
 MSVOA\_D  
 ClientSampled :

Tgt Ion	Resp	Lower	Upper
75	100		
110	7.4	17.6	52.8#
77	0.0	24.3	36.5#

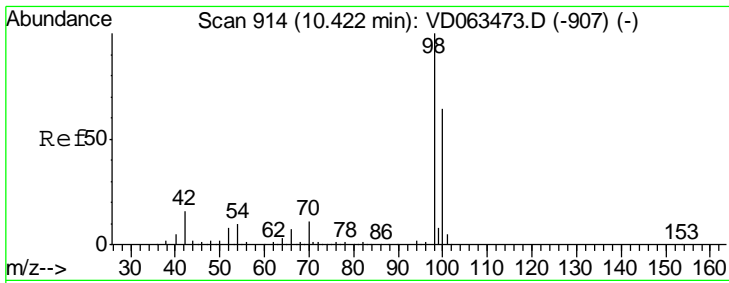


#38  
 Carbon Tetrachloride  
 Concen: 5.302 ug/l  
 RT: 7.05 min Scan# 571  
 Delta R.T. -0.08 min  
 Lab File: VD063585.D  
 Acq: 14 Aug 2019 20:20

Tgt Ion	Resp	Lower	Upper
117	100		
119	8.5	74.2	111.2#
121	0.0	23.1	34.7#



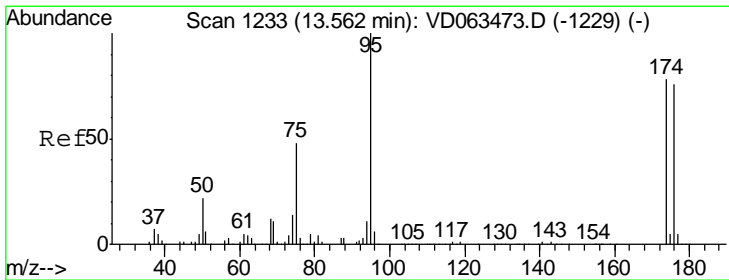
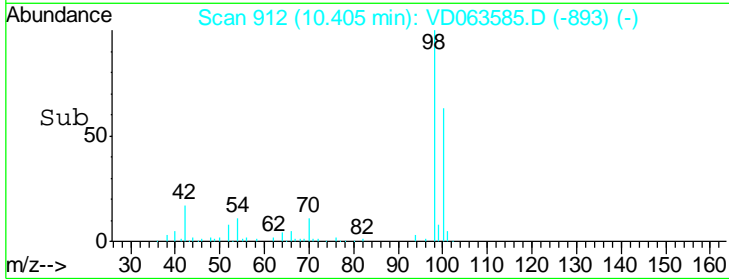
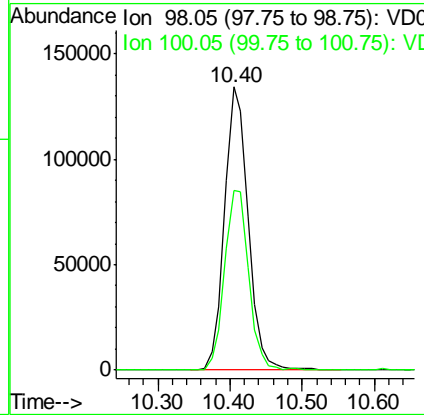
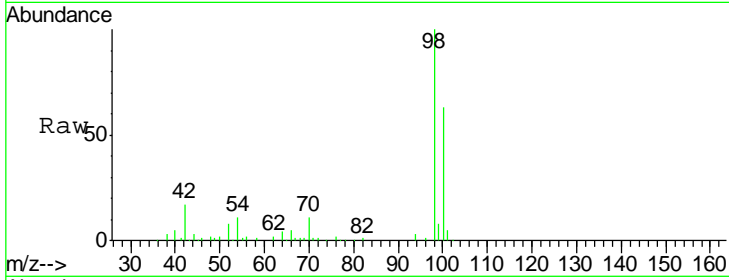




#50  
 Toluene-d8  
 Concen: 29.018 ug/l  
 RT: 10.40 min Scan# 912  
 Delta R.T. -0.02 min  
 Lab File: VD063585.D  
 Acq: 14 Aug 2019 20:20

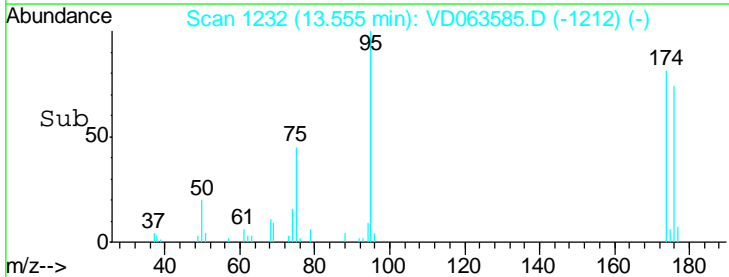
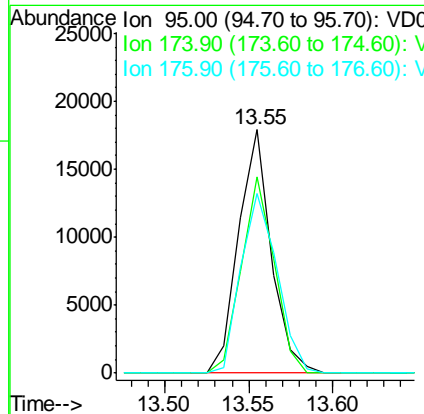
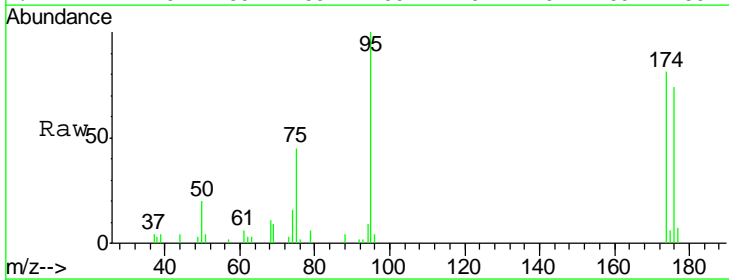
Instrument : MSVOA\_D  
 ClientSampled :

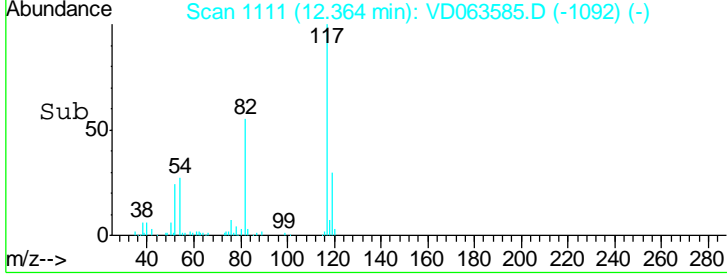
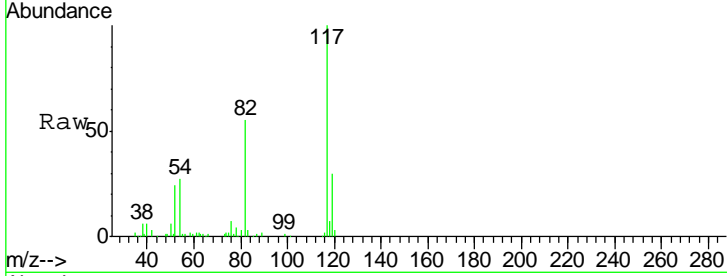
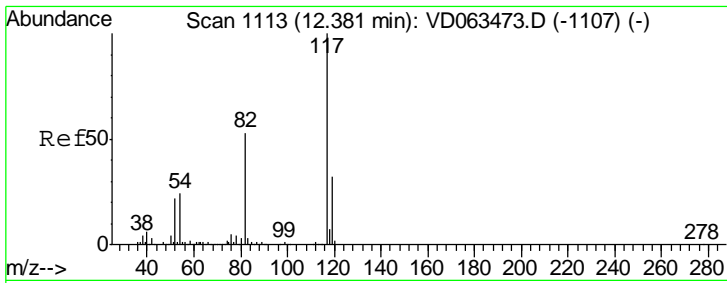
Tgt Ion: 98 Resp: 304438  
 Ion Ratio Lower Upper  
 98 100  
 100 63.3 51.7 77.5



#62  
 4-Bromofluorobenzene  
 Concen: 5.069 ug/l  
 RT: 13.55 min Scan# 1232  
 Delta R.T. -0.01 min  
 Lab File: VD063585.D  
 Acq: 14 Aug 2019 20:20

Tgt Ion: 95 Resp: 24103  
 Ion Ratio Lower Upper  
 95 100  
 174 80.7 0.0 155.4  
 176 74.0 0.0 152.4

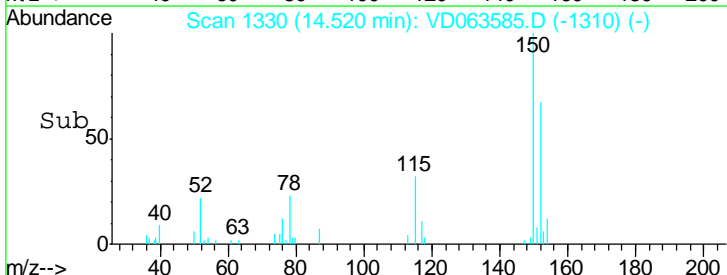
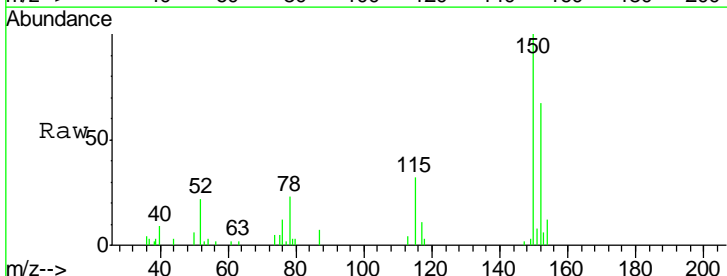
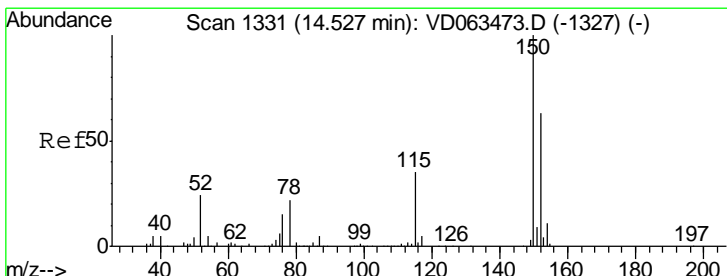
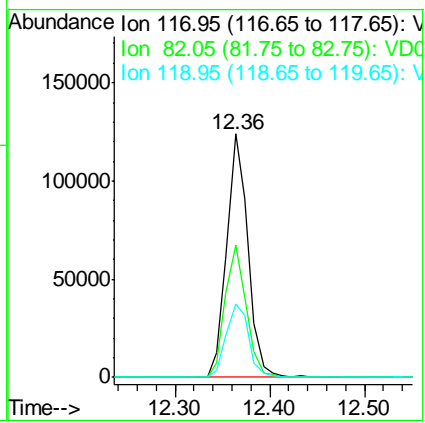




#63  
 Chlorobenzene-d5  
 Concen: 50.000 ug/l  
 RT: 12.36 min Scan# 1111  
 Delta R.T. -0.02 min  
 Lab File: VD063585.D  
 Acq: 14 Aug 2019 20:20

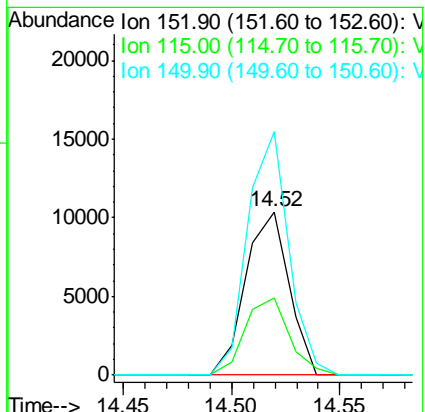
Instrument :  
 MSVOA\_D  
 ClientSampled :

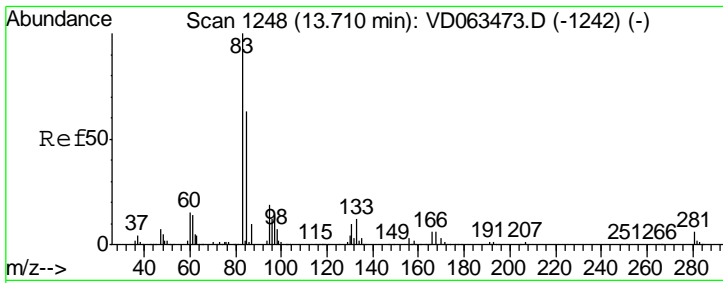
Tgt Ion	Resp	Lower	Upper
117	192926		
82	54.5	42.0	63.0
119	30.0	25.4	38.0



#72  
 1,4-Dichlorobenzene-d4  
 Concen: 50.000 ug/l  
 RT: 14.52 min Scan# 1330  
 Delta R.T. -0.01 min  
 Lab File: VD063585.D  
 Acq: 14 Aug 2019 20:20

Tgt Ion	Resp	Lower	Upper
152	14408		
115	47.4	30.9	92.7
150	149.4	0.0	318.6

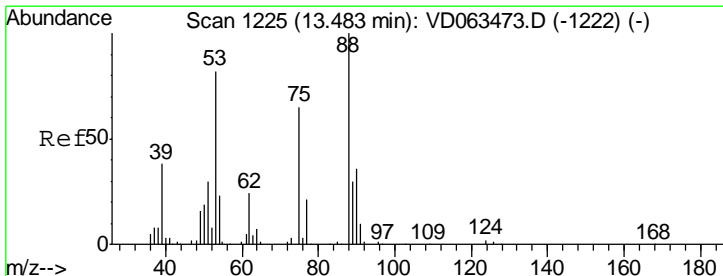
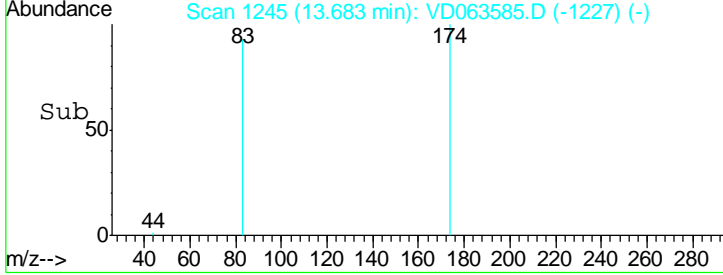
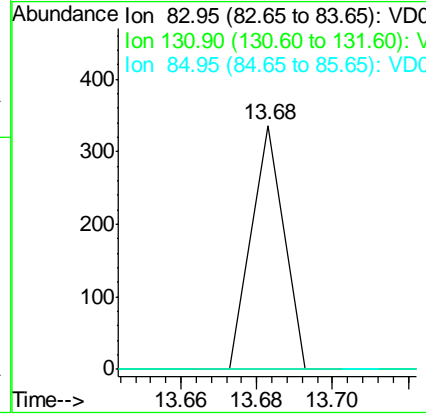
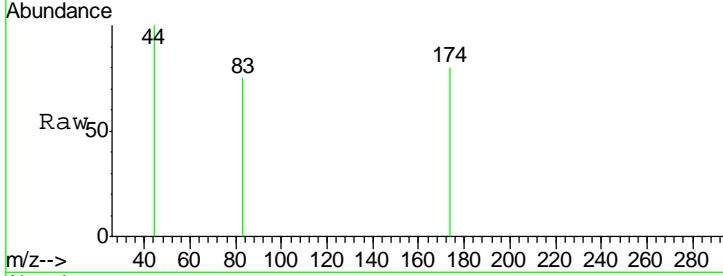




#75  
 1,1,2,2-Tetrachloroethane  
 Concen: 1.302 ug/l  
 RT: 13.68 min Scan# 1245  
 Delta R.T. -0.03 min  
 Lab File: VD063585.D  
 Acq: 14 Aug 2019 20:20

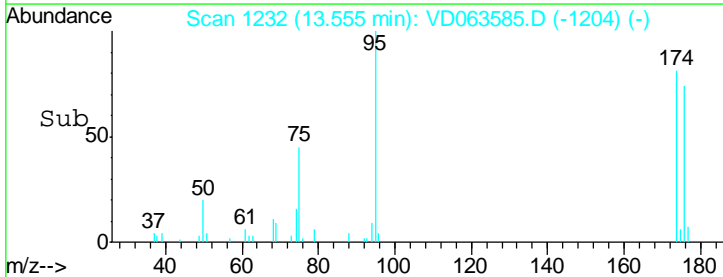
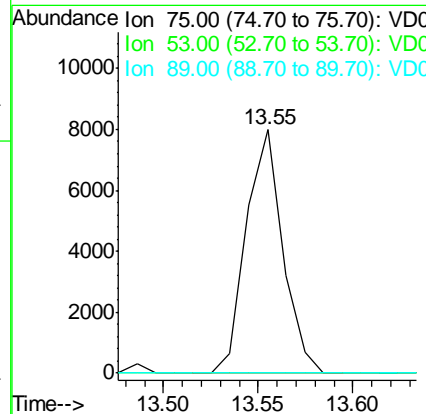
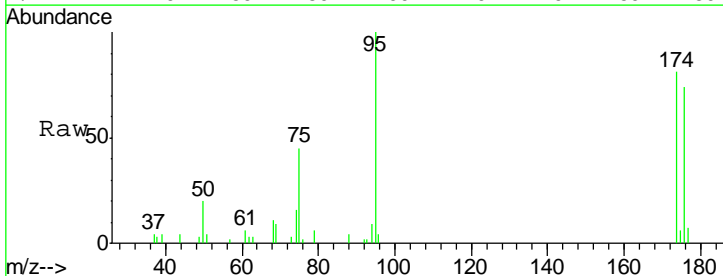
Instrument : MSVOA\_D  
 ClientSampled :

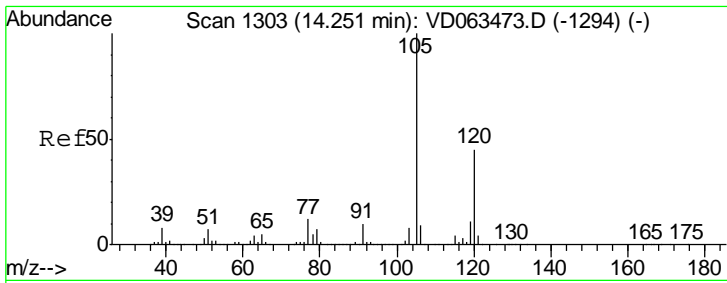
Tgt Ion	Resp	Lower	Upper
83	100		
131	0.0	5.3	15.8#
85	0.0	31.4	94.3#



#81  
 trans-1,4-Dichloro-2-butene  
 Concen: 240.103 ug/l  
 RT: 13.55 min Scan# 1232  
 Delta R.T. 0.07 min  
 Lab File: VD063585.D  
 Acq: 14 Aug 2019 20:20

Tgt Ion	Resp	Lower	Upper
75	100		
53	0.0	101.0	151.4#
89	0.0	37.0	55.6#

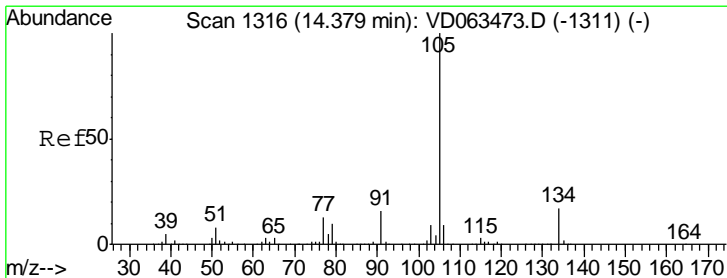
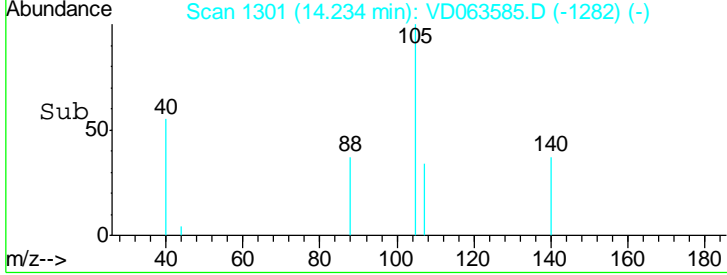
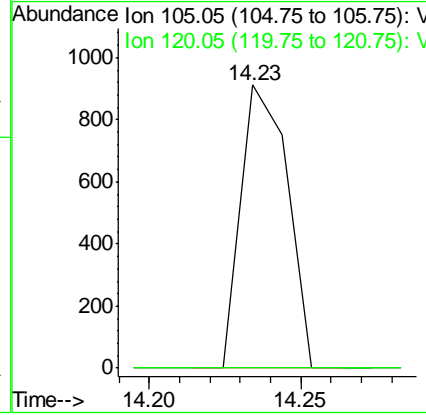
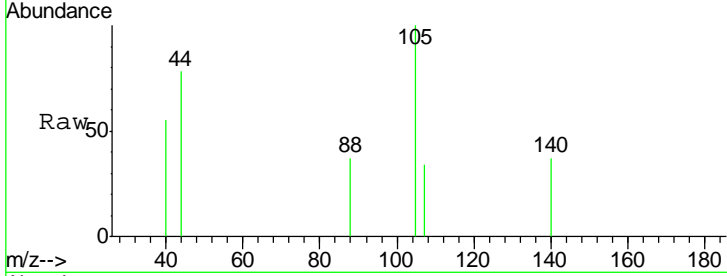




#84  
 1,2,4-Trimethylbenzene  
 Concen: 1.328 ug/l  
 RT: 14.23 min Scan# 1301  
 Delta R.T. -0.02 min  
 Lab File: VD063585.D  
 Acq: 14 Aug 2019 20:20

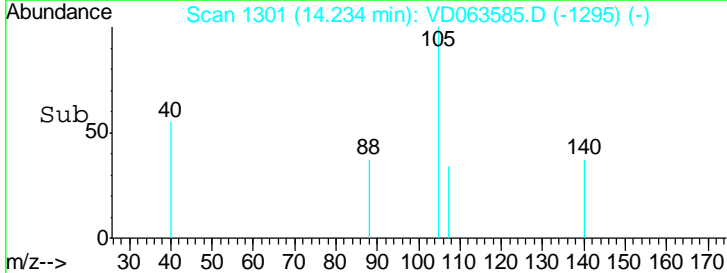
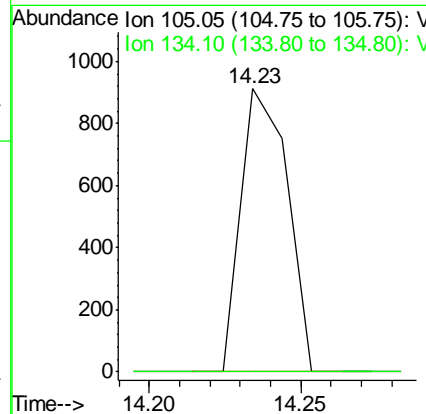
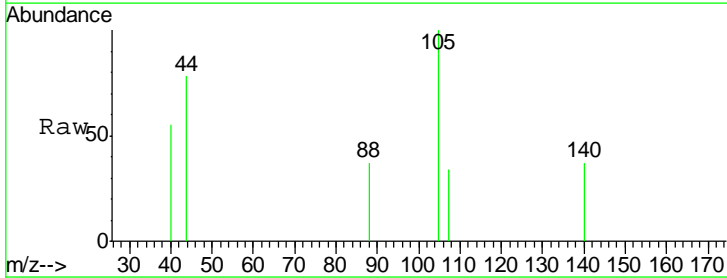
Instrument : MSVOA\_D  
 ClientSampled :

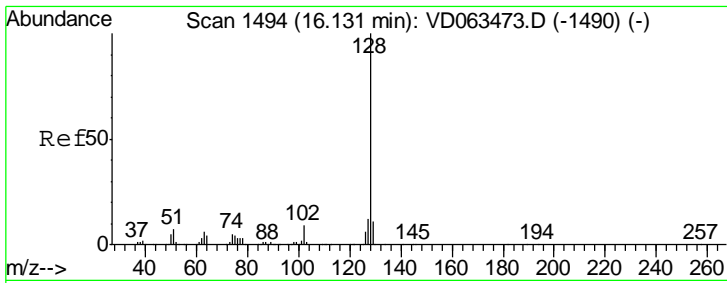
Tgt Ion:105 Resp: 984  
 Ion Ratio Lower Upper  
 105 100  
 120 0.0 22.7 68.1#



#85  
 sec-Butylbenzene  
 Concen: 1.099 ug/l  
 RT: 14.23 min Scan# 1301  
 Delta R.T. -0.15 min  
 Lab File: VD063585.D  
 Acq: 14 Aug 2019 20:20

Tgt Ion:105 Resp: 984  
 Ion Ratio Lower Upper  
 105 100  
 134 0.0 8.3 24.8#





#95  
 Naphthalene  
 Concen: 2.727 ug/l  
 RT: 16.12 min Scan# 1493  
 Delta R.T. -0.01 min  
 Lab File: VD063585.D  
 Acq: 14 Aug 2019 20:20

Instrument : MSVOA\_D  
 ClientSampled :

Tot Ion: 128 Resp: 1169

Ion	Ratio	Lower	Upper
128	100		
127	0.0	9.4	14.0#
129	0.0	8.5	12.7#

