

Data Path : Z:\voasrv\HPCHEM1\MSVOA_D\Data\VD081721\
 Data File : VD070114.D
 Acq On : 18 Aug 2021 05:32
 Operator : VA/SY
 Sample : M3441-04
 Misc : 6.91G/5.00ml/MSVOA_D/SOIL
 ALS Vial : 42 Sample Multiplier: 1

Instrument :
 MSVOA_D
 ClientSampled :
 WC-5

Integration Parameters: RTEINT.P
 Integrator: RTE
 Smoothing : ON Filtering: 5
 Sampling : 1 Min Area: 3 % of largest Peak
 Start Thrs: 0.2 Max Peaks: 100
 Stop Thrs : 0 Peak Location: TOP

If leading or trailing edge < 100 prefer < Baseline drop else tangent >
 Peak separation: 5

Method : Z:\voasrv\HPCHEM1\MSVOA_D\Method\82D081321S.M
 Title : SW846 8260

Signal : TIC: VD070114.D\data.ms

peak #	R.T. min	first scan	max scan	last scan	PK TY	peak height	corr. area	corr. % max.	% of total
1	2.138	35	37	44	rVB4	4781	6622	2.49%	0.413%
2	2.214	44	50	53	rBV3	5944	11574	4.35%	0.723%
3	2.261	55	58	61	rBV4	2652	4644	1.75%	0.290%
4	2.450	86	90	92	rBV4	3055	4151	1.56%	0.259%
5	2.491	95	97	101	rVB3	5190	5738	2.16%	0.358%
6	2.532	101	104	105	rBV2	2876	2984	1.12%	0.186%
7	2.626	117	120	122	rBV3	3337	2951	1.11%	0.184%
8	2.644	122	123	125	rVB2	5611	3383	1.27%	0.211%
9	2.667	125	127	129	rBV3	2704	2842	1.07%	0.177%
10	2.773	143	145	149	rVB3	4639	6317	2.37%	0.394%
11	3.320	235	238	243	rVB2	2237	3933	1.48%	0.246%
12	4.908	506	508	510	rBV	7557	3226	1.21%	0.201%
13	4.950	510	515	518	rBV5	3545	6038	2.27%	0.377%
14	7.667	974	977	978	rBV2	2646	2775	1.04%	0.173%
15	7.679	978	979	982	rVV	3654	2988	1.12%	0.187%
16	7.914	1010	1019	1024	rVV	42899	98435	37.00%	6.146%
17	7.973	1024	1029	1039	rVB	66270	140647	52.87%	8.782%
18	8.326	1080	1089	1099	rVB2	56451	131871	49.57%	8.234%
19	8.402	1099	1102	1106	rVV	2343	3451	1.30%	0.215%
20	8.861	1172	1180	1187	rBV	96381	190648	71.66%	11.903%
21	8.991	1197	1202	1207	rVB3	1961	3758	1.41%	0.235%
22	9.355	1261	1264	1268	rBV2	1703	2839	1.07%	0.177%
23	10.220	1408	1411	1416	rBV2	1983	3381	1.27%	0.211%
24	10.338	1425	1431	1438	rBV	148027	266030	100.00%	16.610%
25	10.943	1529	1534	1538	rVB2	1940	3610	1.36%	0.225%
26	11.637	1643	1652	1663	rBV	151095	255453	96.02%	15.950%
27	12.626	1813	1820	1828	rVB	99959	170141	63.96%	10.623%
28	13.396	1948	1951	1954	rVV3	2497	3773	1.42%	0.236%
29	13.567	1972	1980	1987	rVB	128479	208715	78.46%	13.032%
30	14.184	2081	2085	2087	rBV	2631	3514	1.32%	0.219%
31	14.596	2149	2155	2157	rVB4	1902	2978	1.12%	0.186%
32	14.778	2184	2186	2189	rBV3	2401	2868	1.08%	0.179%
33	14.984	2218	2221	2224	rBV4	2277	2990	1.12%	0.187%
34	15.225	2259	2262	2265	rBV2	2270	2738	1.03%	0.171%
35	15.743	2348	2350	2353	rBV3	2439	2843	1.07%	0.178%
36	15.867	2370	2371	2376	rVB2	3766	3847	1.45%	0.240%

Data Path : Z:\voasrv\HPCHEM1\MSVOA_D\Data\VD081721\
Data File : VD070114.D
Acq On : 18 Aug 2021 05:32
Operator : VA/SY
Sample : M3441-04
Misc : 6.91G/5.00ml/MSVOA_D/SOIL
ALS Vial : 42 Sample Multiplier: 1

Instrument :
MSVOA_D
ClientSampled :
WC-5

Integration Parameters: RTEINT.P

Integrator: RTE
Smoothing : ON Filtering: 5
Sampling : 1 Min Area: 3 % of largest Peak
Start Thrs: 0.2 Max Peaks: 100
Stop Thrs : 0 Peak Location: TOP

If leading or trailing edge < 100 prefer < Baseline drop else tangent >
Peak separation: 5

Method : Z:\voasrv\HPCHEM1\MSVOA_D\Method\82D081321S.M
Title : SW846 8260

37	15.914	2376	2379	2381	rBV3	2814	2808	1.06%	0.175%
38	16.002	2393	2394	2398	rVB3	3049	3019	1.13%	0.188%
39	16.072	2402	2406	2407	rBV4	2769	2682	1.01%	0.167%
40	16.090	2407	2409	2414	rVB4	2690	2695	1.01%	0.168%
41	16.302	2442	2445	2448	rVB3	4624	3763	1.41%	0.235%
42	16.343	2448	2452	2454	rBV4	2158	3074	1.16%	0.192%
43	16.402	2459	2462	2463	rBV3	3340	2819	1.06%	0.176%
44	16.490	2473	2477	2478	rVV3	3132	3337	1.25%	0.208%
45	16.520	2481	2482	2487	rVV4	2282	2726	1.02%	0.170%

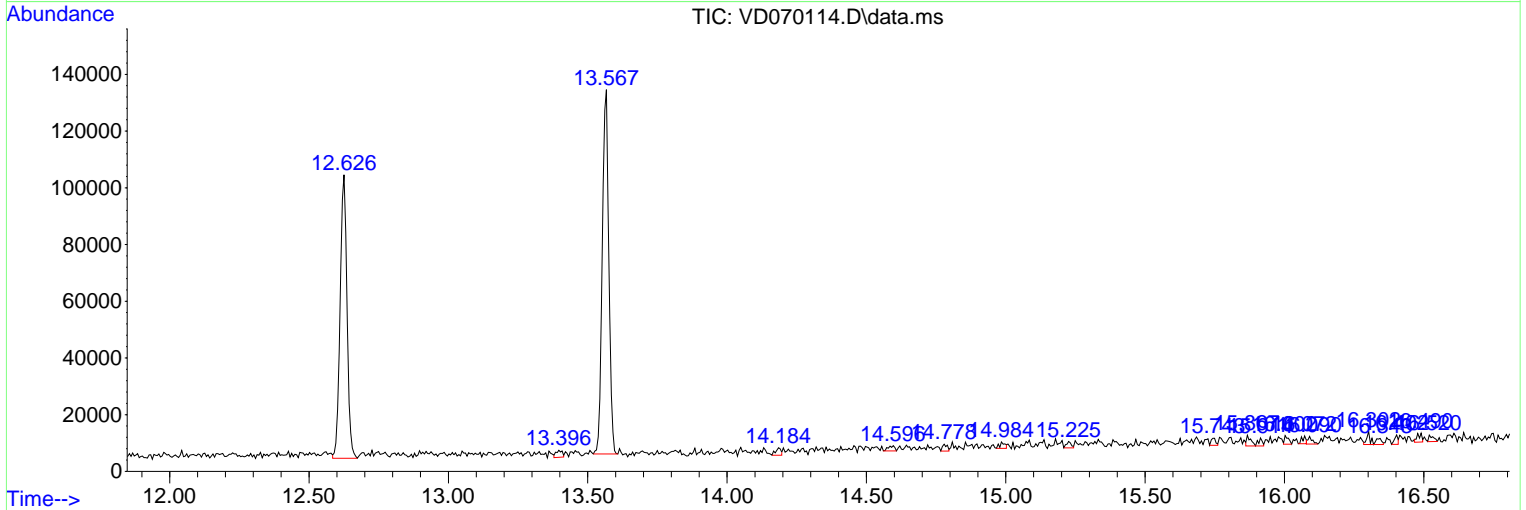
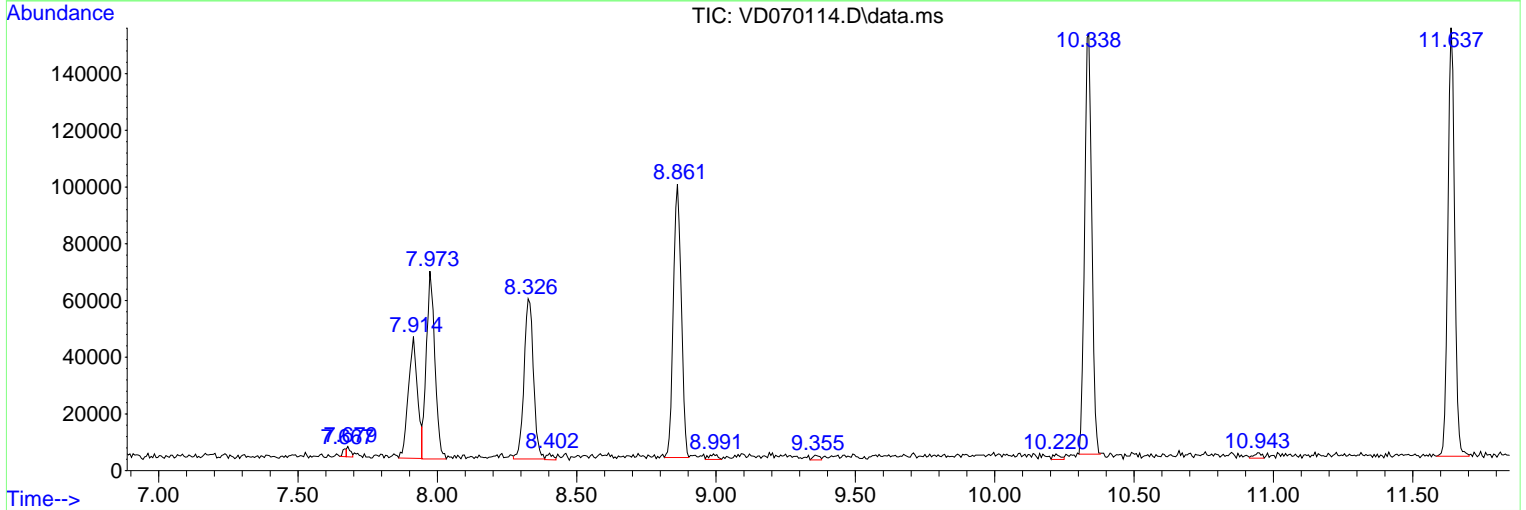
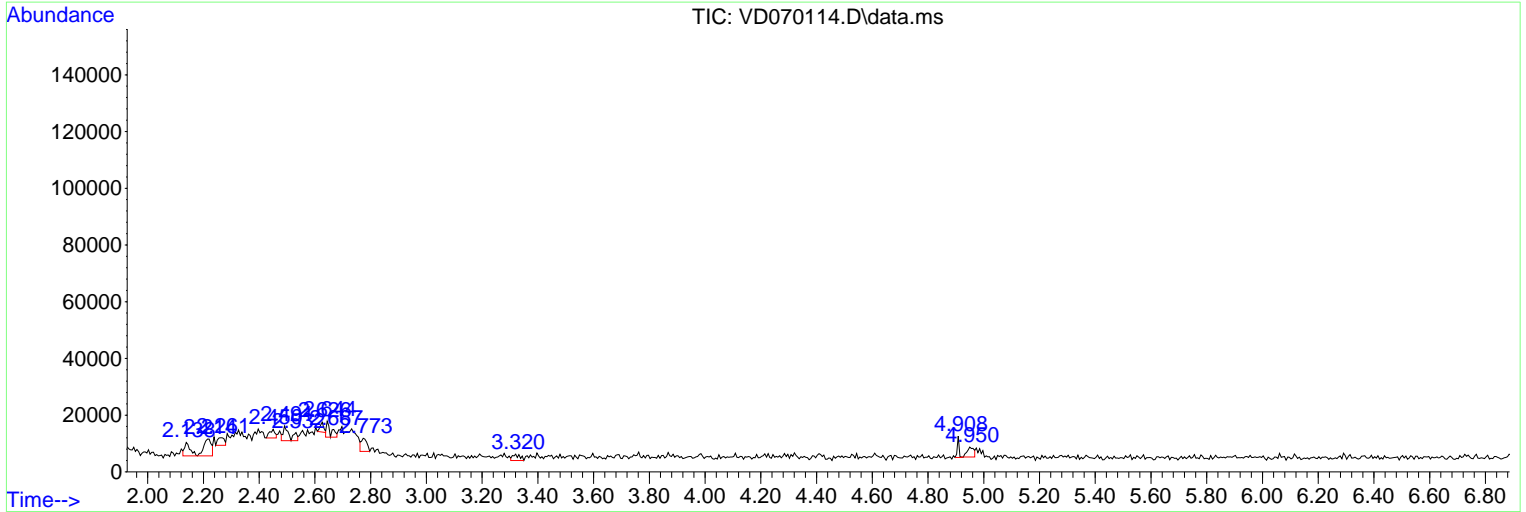
Sum of corrected areas: 1601619

Data Path : Z:\voasrv\HPCHEM1\MSVOA_D\Data\VD081721\
 Data File : VD070114.D
 Acq On : 18 Aug 2021 05:32
 Operator : VA/SY
 Sample : M3441-04
 Misc : 6.91G/5.00ml/MSVOA_D/SOIL
 ALS Vial : 42 Sample Multiplier: 1

Instrument :
 MSVOA_D
 ClientSampled :
 WC-5

Quant Method : Z:\voasrv\HPCHEM1\MSVOA_D\Method\82D081321S.M
 Quant Title : SW846 8260

TIC Library : C:\Database\NIST20.L
 TIC Integration Parameters: LSCINT.P



Library Search Compound Report

Data Path : Z:\voasrv\HPCHEM1\MSVOA_D\Data\VD081721\
Data File : VD070114.D
Acq On : 18 Aug 2021 05:32
Operator : VA/SY
Sample : M3441-04
Misc : 6.91G/5.00ml/MSVOA_D/SOIL
ALS Vial : 42 Sample Multiplier: 1

Instrument :
MSVOA_D
ClientSampleId :
WC-5

Quant Method : Z:\voasrv\HPCHEM1\MSVOA_D\Method\82D081321S.M
Quant Title : SW846 8260

TIC Library : C:\Database\NIST20.L
TIC Integration Parameters: LSCINT.P

No Library Search Compounds Detected

Data Path : Z:\voasrv\HPCHEM1\MSVOA_D\Data\VD081721\
Data File : VD070114.D
Acq On : 18 Aug 2021 05:32
Operator : VA/SY
Sample : M3441-04
Misc : 6.91G/5.00ml/MSVOA_D/SOIL
ALS Vial : 42 Sample Multiplier: 1

Instrument :
MSVOA_D
ClientSampled :
WC-5

Quant Method : Z:\voasrv\HPCHEM1\MSVOA_D\Method\82D081321S.M
Quant Title : SW846 8260

TIC Library : C:\Database\NIST20.L
TIC Integration Parameters: LSCINT.P

TIC Top Hit name	RT	EstConc	Units	Response	--Internal Standard--			
					#	RT	Resp	Conc
