

Data Path : Z:\voasrv\HPCHEM1\MSVOA\_D\Data\VD081821\  
 Data File : VD070149.D  
 Acq On : 19 Aug 2021 03:20  
 Operator : VA/SY  
 Sample : M3418-03  
 Misc : 5.19G/5.00ml/MSVOA\_D/SOIL  
 ALS Vial : 38 Sample Multiplier: 1

Instrument :  
 MSVOA\_D  
 ClientSampleId :  
 SWCS-14-0002

Quant Time: Aug 19 07:38:22 2021  
 Quant Method : Z:\voasrv\HPCHEM1\MSVOA\_D\Method\82D081321S.M  
 Quant Title : SW846 8260  
 QLast Update : Sat Aug 14 02:33:51 2021  
 Response via : Initial Calibration

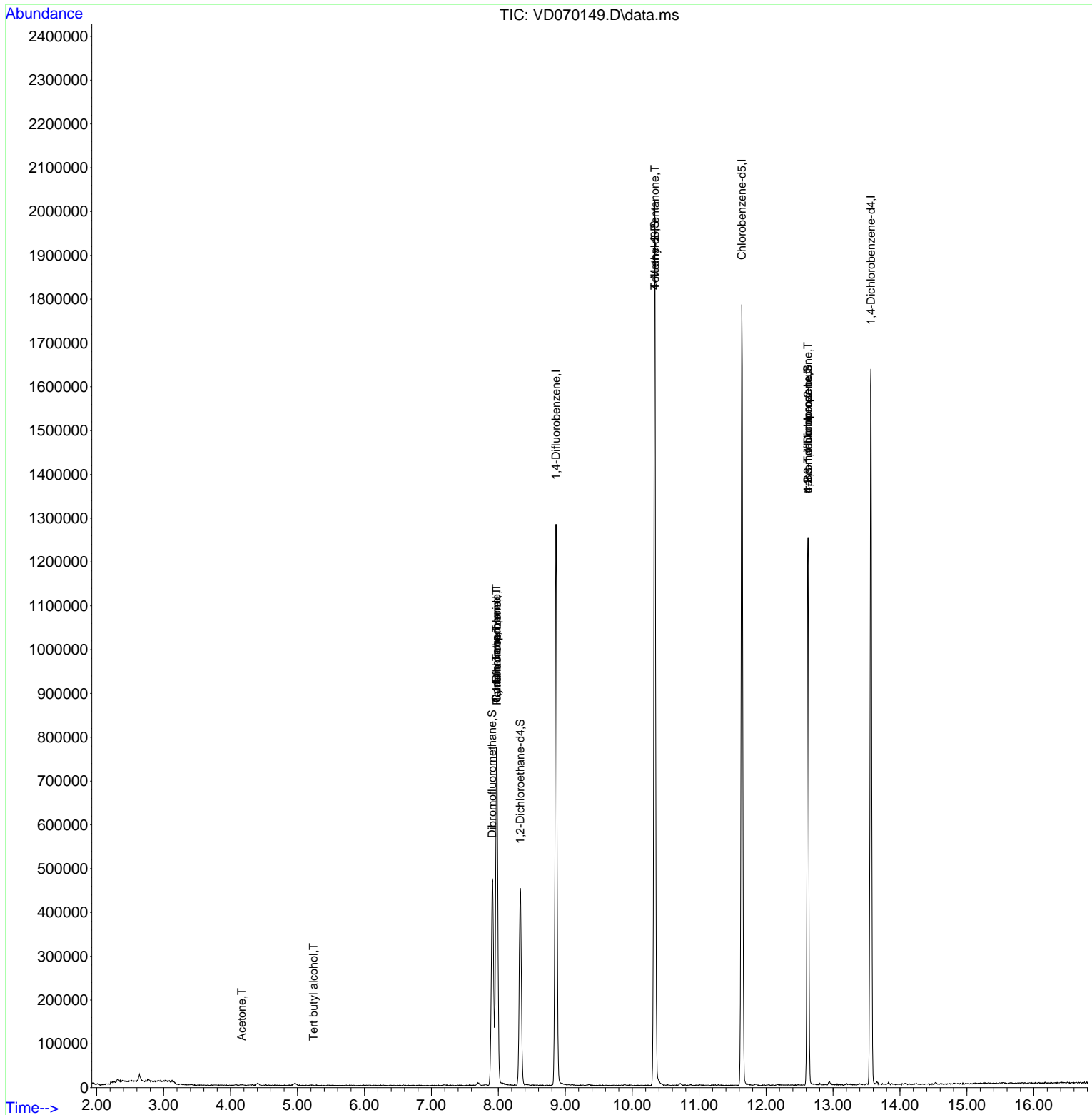
Compound	R.T.	QIon	Response	Conc	Units	Dev(Min)
-----						
Internal Standards						
1) Pentafluorobenzene	7.979	168	553686	50.000	ug/l	0.00
34) 1,4-Difluorobenzene	8.861	114	1072802	50.000	ug/l	0.00
63) Chlorobenzene-d5	11.638	117	1042694	50.000	ug/l	0.00
72) 1,4-Dichlorobenzene-d4	13.567	152	442540	50.000	ug/l	0.00
System Monitoring Compounds						
33) 1,2-Dichloroethane-d4	8.326	65	351492	53.974	ug/l	0.00
Spiked Amount	50.000	Range	50 - 163	Recovery	=	107.940%
35) Dibromofluoromethane	7.909	113	350685	50.597	ug/l	0.00
Spiked Amount	50.000	Range	54 - 147	Recovery	=	101.200%
50) Toluene-d8	10.338	98	1374888	51.002	ug/l	0.00
Spiked Amount	50.000	Range	49 - 140	Recovery	=	102.000%
62) 4-Bromofluorobenzene	12.626	95	435850	49.087	ug/l	0.00
Spiked Amount	50.000	Range	25 - 144	Recovery	=	98.180%
Target Compounds						
					Qvalue	
2) Dichlorodifluoromethane	1.991	85	669	Below Cal	#	42
3) Chloromethane	2.209	50	1630	Below Cal	#	42
5) Bromomethane	2.773	94	2694	Below Cal		90
11) Tert butyl alcohol	5.238	59	589	1.636	ug/l #	71
16) Acetone	4.168	43	1639	1.366	ug/l #	41
20) Methylene Chloride	4.967	84	3917	Below Cal	#	75
31) Cyclohexane	7.973	56	14120	1.095	ug/l #	1
36) 1,1-Dichloropropene	7.973	75	49223	4.265	ug/l #	49
38) Carbon Tetrachloride	7.973	117	59975	5.724	ug/l #	14
51) 4-Methyl-2-Pentanone	10.338	43	5394	1.326	ug/l #	1
76) 1,2,3-Trichloropropane	12.626	75	215326	47.979	ug/l #	1
81) trans-1,4-Dichloro-2-b...	12.626	75	215326	124.535	ug/l #	18
-----						

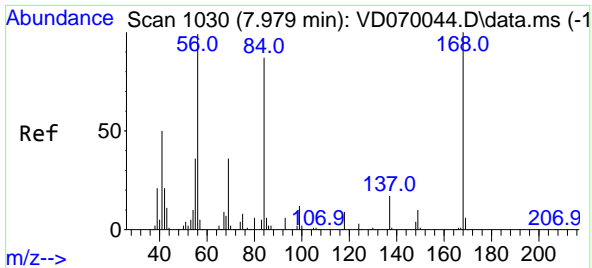
(#) = qualifier out of range (m) = manual integration (+) = signals summed

Data Path : Z:\voasrv\HPCHEM1\MSVOA\_D\Data\VD081821\  
 Data File : VD070149.D  
 Acq On : 19 Aug 2021 03:20  
 Operator : VA/SY  
 Sample : M3418-03  
 Misc : 5.19G/5.00ml/MSVOA\_D/SOIL  
 ALS Vial : 38 Sample Multiplier: 1

Instrument :  
 MSVOA\_D  
 Client Sampled :  
 SWCS-14-0002

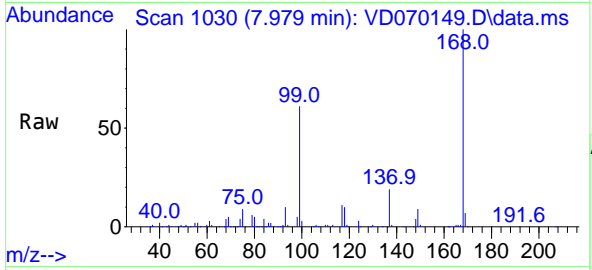
Quant Time: Aug 19 07:38:22 2021  
 Quant Method : Z:\voasrv\HPCHEM1\MSVOA\_D\Method\82D081321S.M  
 Quant Title : SW846 8260  
 QLast Update : Sat Aug 14 02:33:51 2021  
 Response via : Initial Calibration



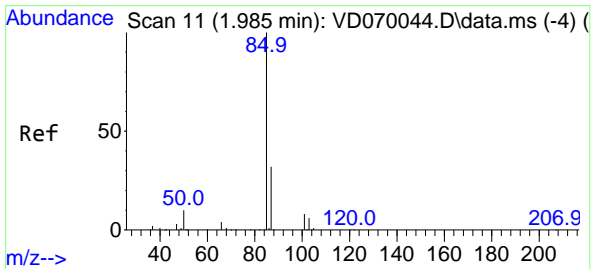
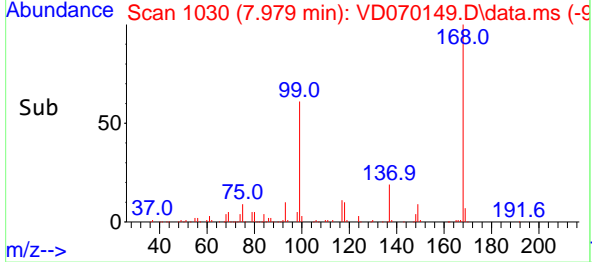
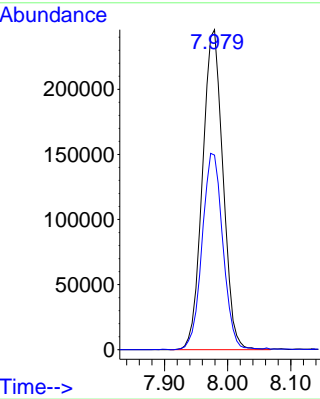


#1  
 Pentafluorobenzene  
 Concen: 50.000 ug/l  
 RT: 7.979 min Scan# 1030  
 Delta R.T. 0.000 min  
 Lab File: VD070149.D  
 Acq: 19 Aug 2021 03:20

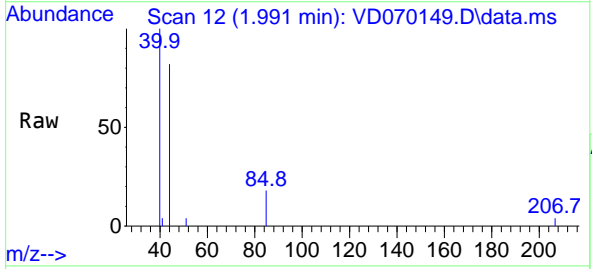
**Instrument :**  
 MSVOA\_D  
**ClientSampled :**  
 SWCS-14-0002



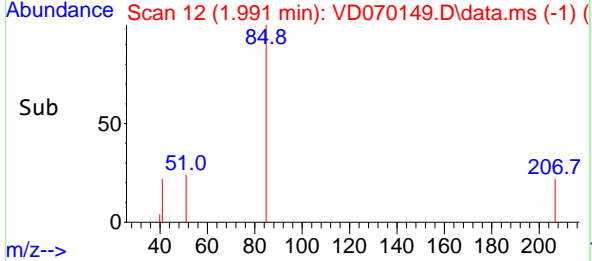
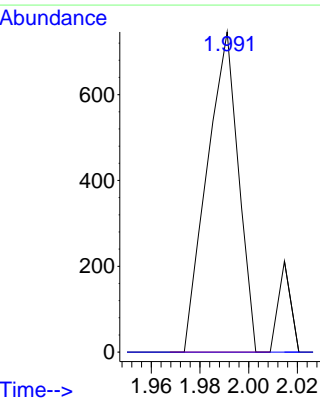
Tgt Ion:168 Resp: 553686  
 Ion Ratio Lower Upper  
 168 100  
 99 60.8 50.3 75.5

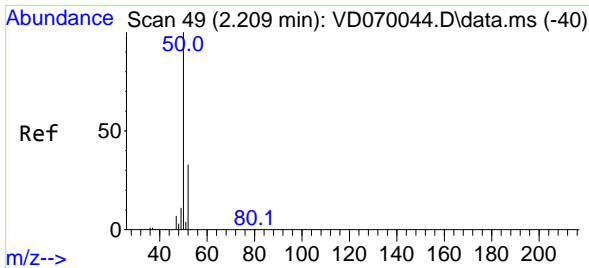


#2  
 Dichlorodifluoromethane  
 Concen: Below Cal  
 RT: 1.991 min Scan# 12  
 Delta R.T. 0.006 min  
 Lab File: VD070149.D  
 Acq: 19 Aug 2021 03:20



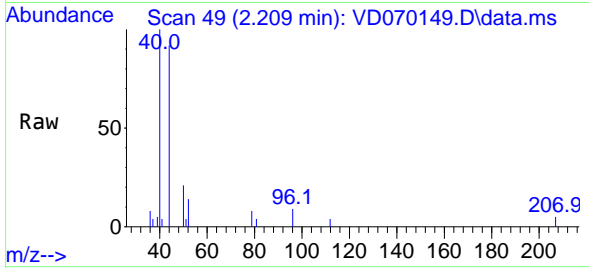
Tgt Ion: 85 Resp: 669  
 Ion Ratio Lower Upper  
 85 100  
 87 0.0 16.2 48.6#



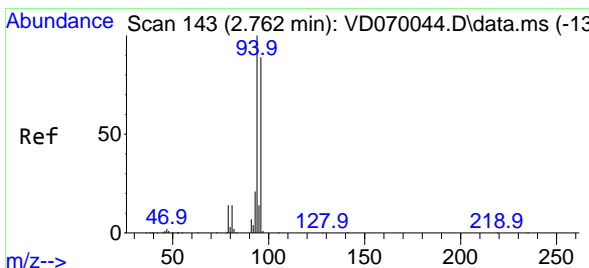
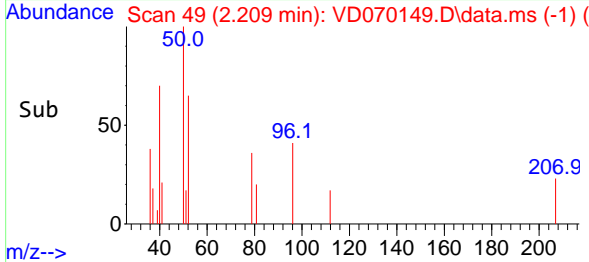
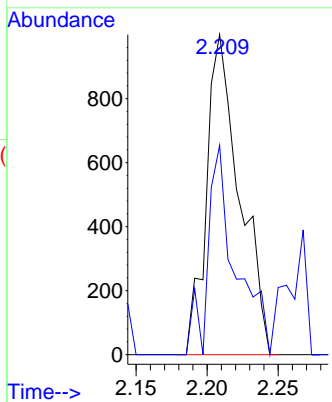


#3  
 Chloromethane  
 Concen: Below Cal  
 RT: 2.209 min Scan# 49  
 Delta R.T. -0.000 min  
 Lab File: VD070149.D  
 Acq: 19 Aug 2021 03:20

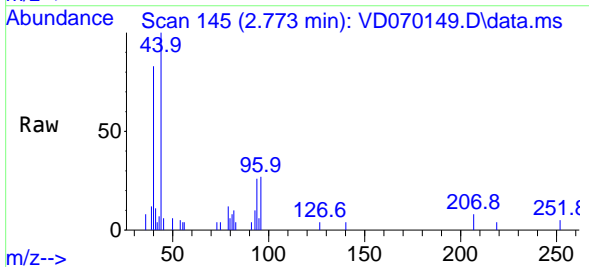
Instrument :  
 MSVOA\_D  
 ClientSampled :  
 SWCS-14-0002



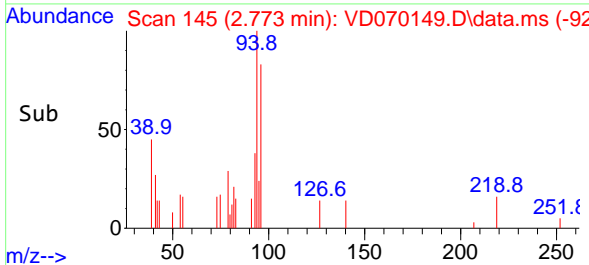
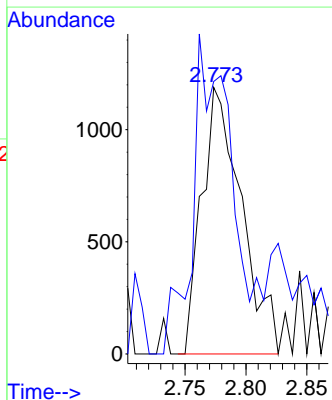
Tgt Ion: 50 Resp: 1630  
 Ion Ratio Lower Upper  
 50 100  
 52 65.4 26.3 39.5#

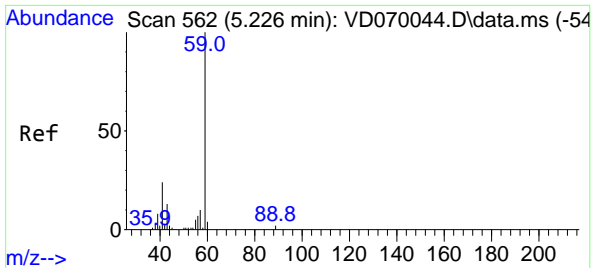


#5  
 Bromomethane  
 Concen: Below Cal  
 RT: 2.773 min Scan# 145  
 Delta R.T. 0.011 min  
 Lab File: VD070149.D  
 Acq: 19 Aug 2021 03:20



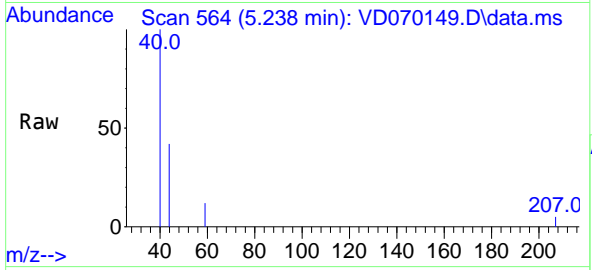
Tgt Ion: 94 Resp: 2694  
 Ion Ratio Lower Upper  
 94 100  
 96 79.3 70.9 106.3



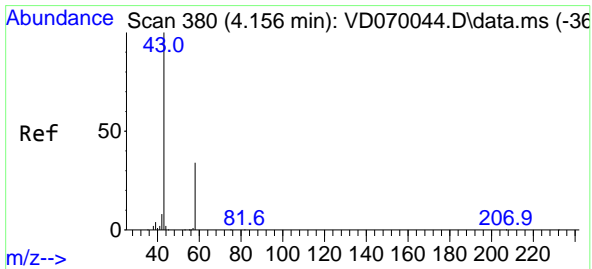
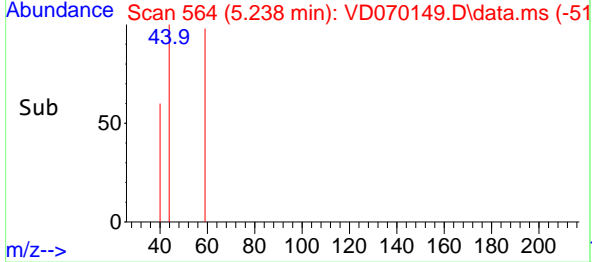
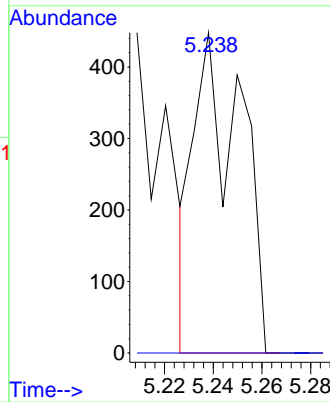


#11  
 Tert butyl alcohol  
 Concen: 1.636 ug/l  
 RT: 5.238 min Scan# 564  
 Delta R.T. 0.012 min  
 Lab File: VD070149.D  
 Acq: 19 Aug 2021 03:20

Instrument :  
 MSVOA\_D  
 ClientSampled :  
 SWCS-14-0002

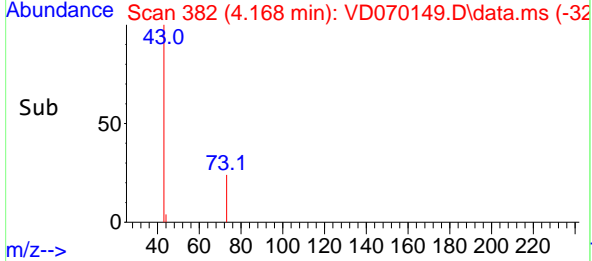
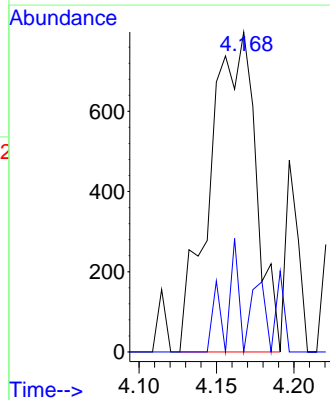
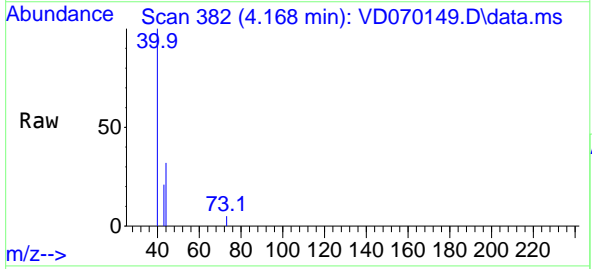


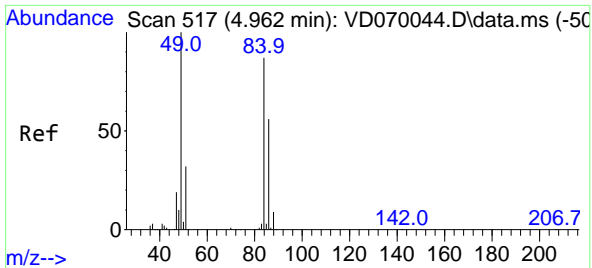
Tgt Ion: 59 Resp: 589  
 Ion Ratio Lower Upper  
 59 100  
 57 0.0 8.8 13.2#



#16  
 Acetone  
 Concen: 1.366 ug/l  
 RT: 4.168 min Scan# 382  
 Delta R.T. 0.012 min  
 Lab File: VD070149.D  
 Acq: 19 Aug 2021 03:20

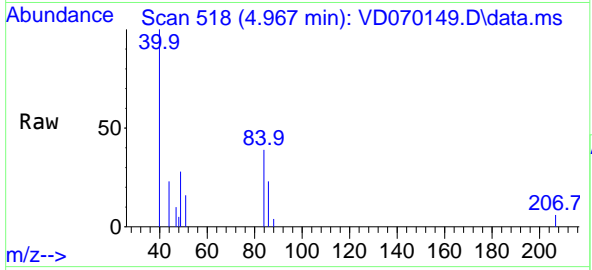
Tgt Ion: 43 Resp: 1639  
 Ion Ratio Lower Upper  
 43 100  
 58 0.0 26.8 40.2#





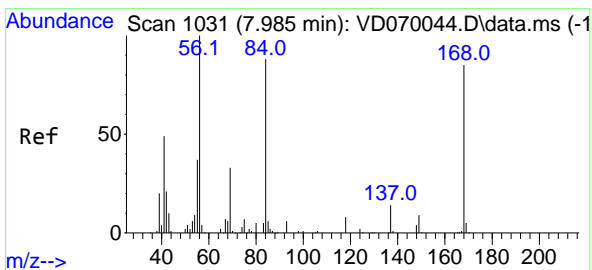
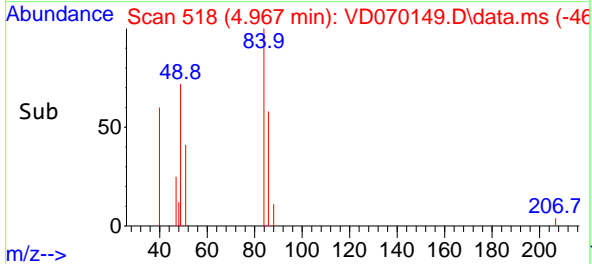
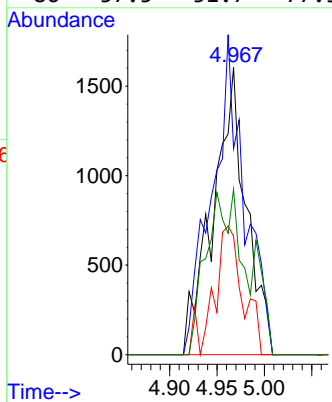
#20  
 Methylene Chloride  
 Concen: Below Cal  
 RT: 4.967 min Scan# 518  
 Delta R.T. 0.005 min  
 Lab File: VD070149.D  
 Acq: 19 Aug 2021 03:20

Instrument :  
 MSVOA\_D  
 ClientSampleId :  
 SWCS-14-0002

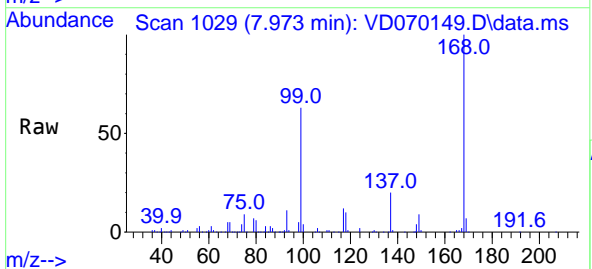


Tgt Ion: 84 Resp: 3917

Ion	Ratio	Lower	Upper
84	100		
49	71.7	92.5	138.7#
51	41.2	29.7	44.5
86	57.5	51.7	77.5

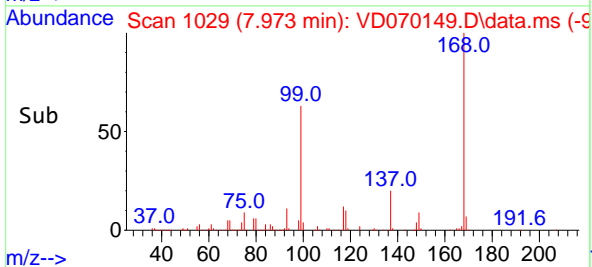
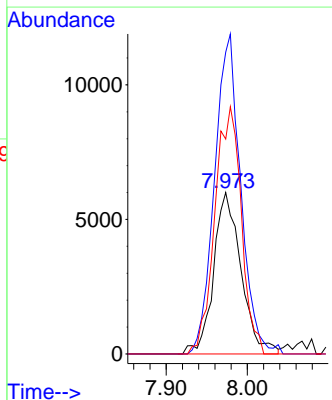


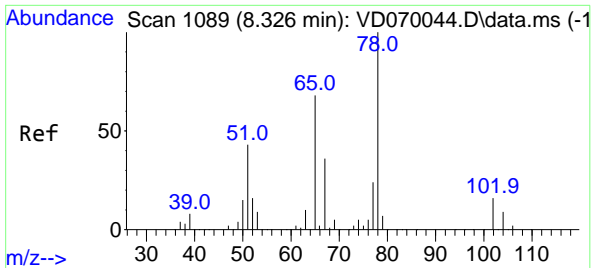
#31  
 Cyclohexane  
 Concen: 1.095 ug/l  
 RT: 7.973 min Scan# 1029  
 Delta R.T. -0.012 min  
 Lab File: VD070149.D  
 Acq: 19 Aug 2021 03:20



Tgt Ion: 56 Resp: 14120

Ion	Ratio	Lower	Upper
56	100		
69	187.0	26.7	40.1#
84	133.1	70.4	105.6#

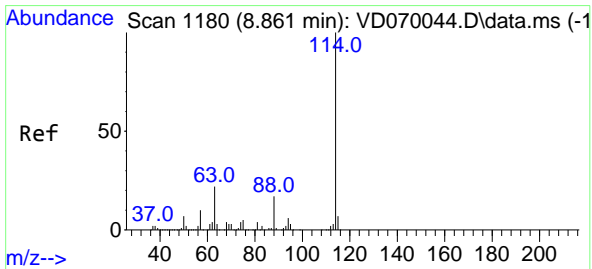
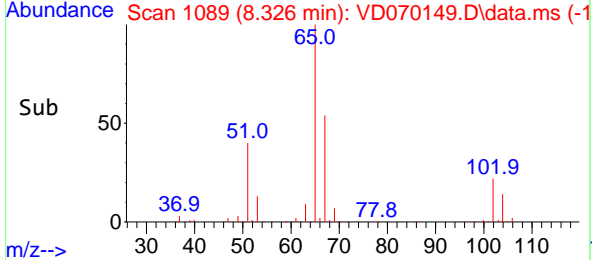
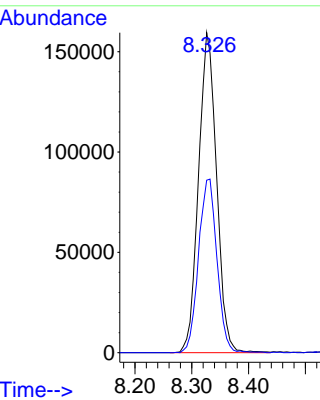
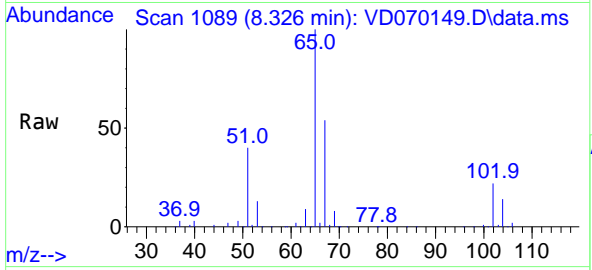




#33  
 1,2-Dichloroethane-d4  
 Concen: 53.974 ug/l  
 RT: 8.326 min Scan# 1089  
 Delta R.T. 0.000 min  
 Lab File: VD070149.D  
 Acq: 19 Aug 2021 03:20

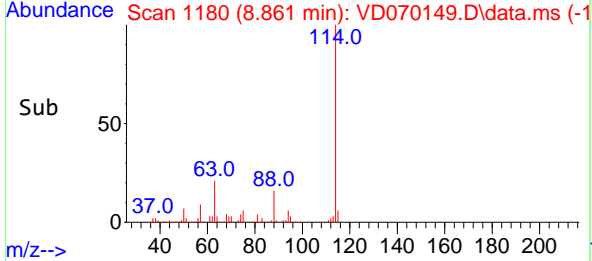
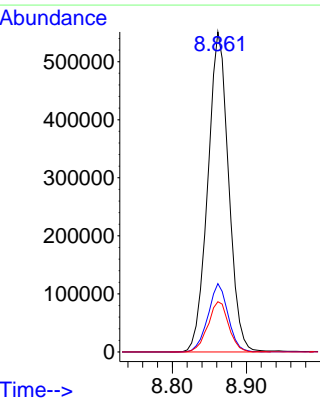
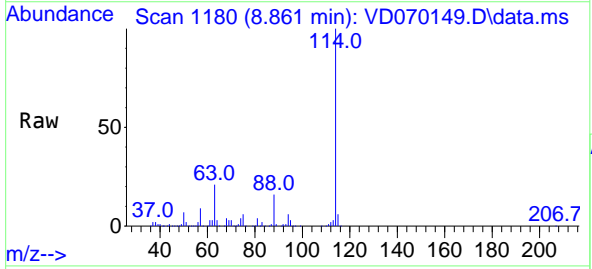
**Instrument :**  
 MSVOA\_D  
**ClientSampleId :**  
 SWCS-14-0002

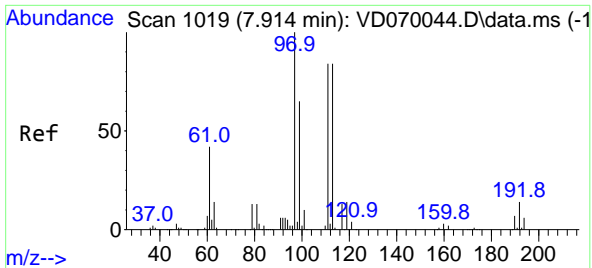
Tgt Ion: 65 Resp: 351492  
 Ion Ratio Lower Upper  
 65 100  
 67 55.3 0.0 107.8



#34  
 1,4-Difluorobenzene  
 Concen: 50.000 ug/l  
 RT: 8.861 min Scan# 1180  
 Delta R.T. 0.000 min  
 Lab File: VD070149.D  
 Acq: 19 Aug 2021 03:20

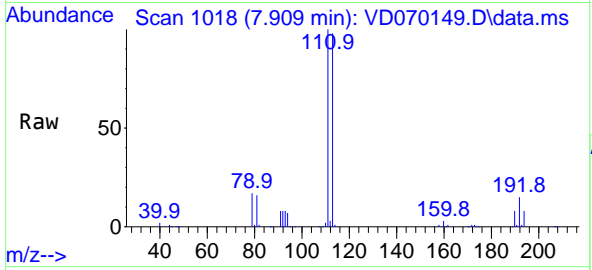
Tgt Ion:114 Resp: 1072802  
 Ion Ratio Lower Upper  
 114 100  
 63 21.4 0.0 43.6  
 88 15.7 0.0 33.4



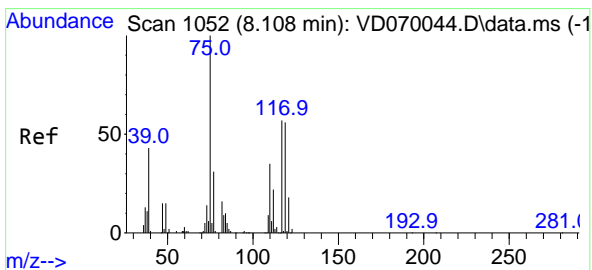
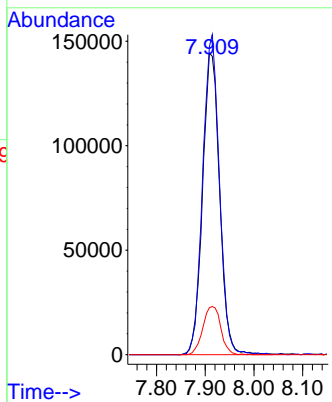
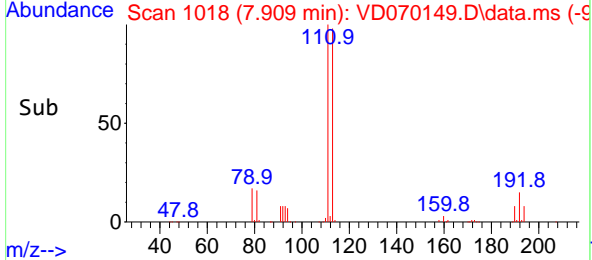


#35  
 Dibromofluoromethane  
 Concen: 50.597 ug/l  
 RT: 7.909 min Scan# 1018  
 Delta R.T. -0.006 min  
 Lab File: VD070149.D  
 Acq: 19 Aug 2021 03:20

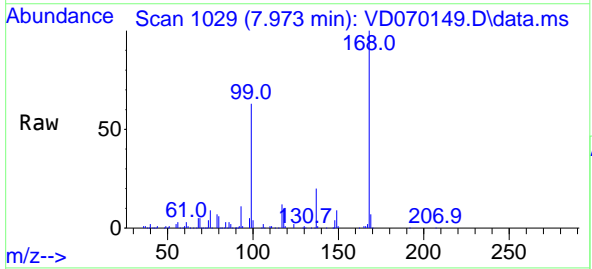
**Instrument :**  
 MSVOA\_D  
**ClientSampled :**  
 SWCS-14-0002



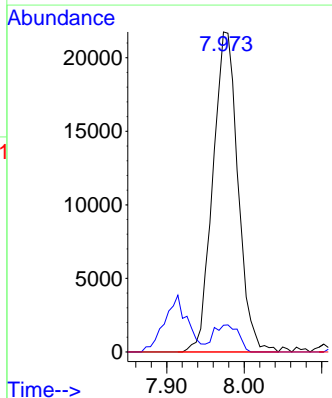
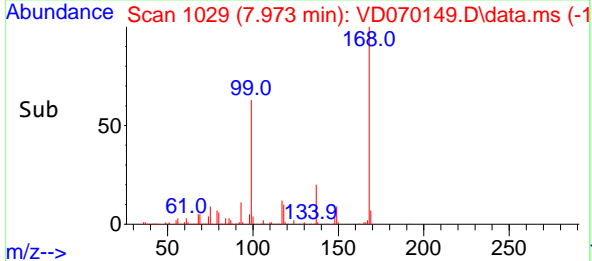
Tgt Ion:113 Resp: 350685  
 Ion Ratio Lower Upper  
 113 100  
 111 104.3 81.8 122.6  
 192 16.8 13.2 19.8



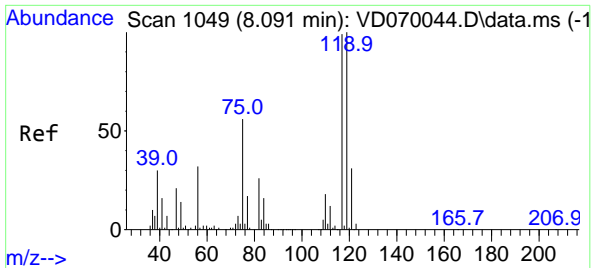
#36  
 1,1-Dichloropropene  
 Concen: 4.265 ug/l  
 RT: 7.973 min Scan# 1029  
 Delta R.T. -0.135 min  
 Lab File: VD070149.D  
 Acq: 19 Aug 2021 03:20



Tgt Ion: 75 Resp: 49223  
 Ion Ratio Lower Upper  
 75 100  
 110 8.3 16.9 50.7#  
 77 0.0 25.2 37.8#

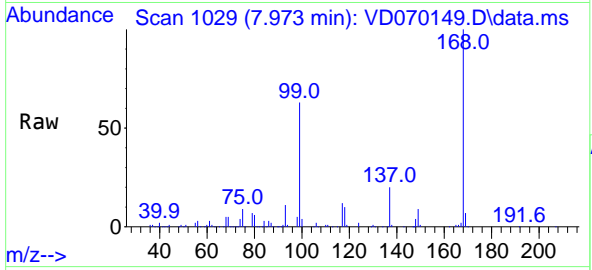






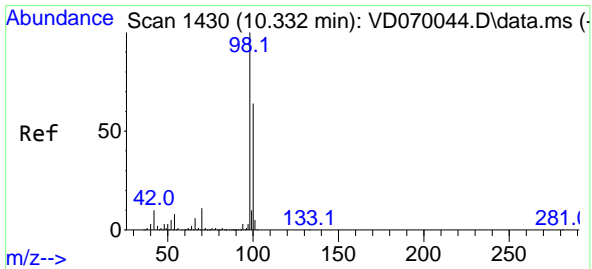
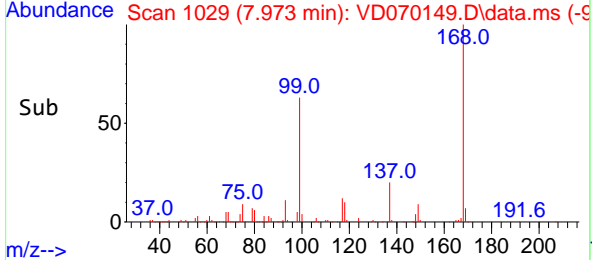
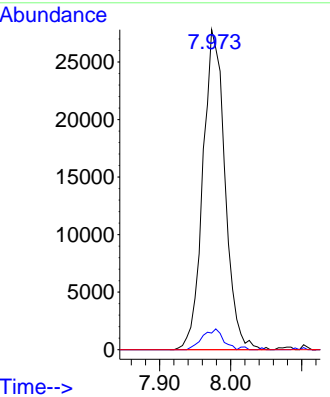
#38  
 Carbon Tetrachloride  
 Concen: 5.724 ug/l  
 RT: 7.973 min Scan# 1029  
 Delta R.T. -0.118 min  
 Lab File: VD070149.D  
 Acq: 19 Aug 2021 03:20

**Instrument :**  
 MSVOA\_D  
**ClientSampleId :**  
 SWCS-14-0002



Tgt Ion: 117 Resp: 59975

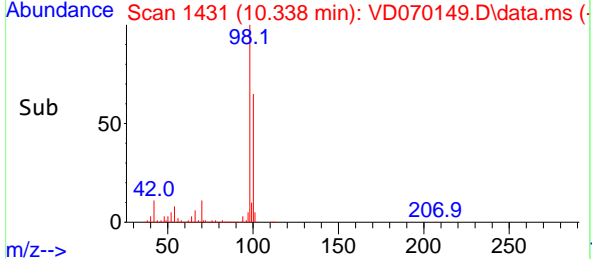
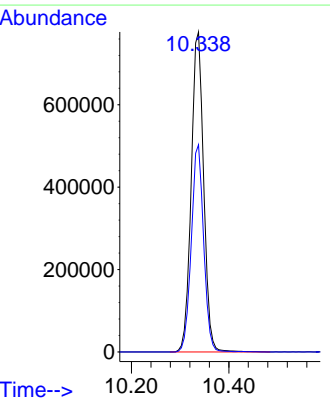
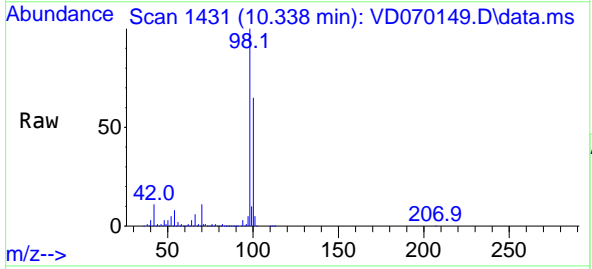
Ion	Ratio	Lower	Upper
117	100		
119	5.2	81.0	121.6#
121	0.0	25.0	37.6#

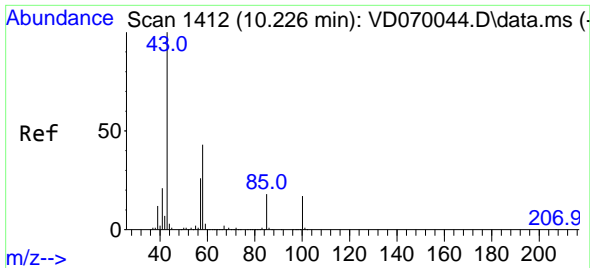


#50  
 Toluene-d8  
 Concen: 51.002 ug/l  
 RT: 10.338 min Scan# 1431  
 Delta R.T. 0.006 min  
 Lab File: VD070149.D  
 Acq: 19 Aug 2021 03:20

Tgt Ion: 98 Resp: 1374888

Ion	Ratio	Lower	Upper
98	100		
100	64.2	52.6	78.8

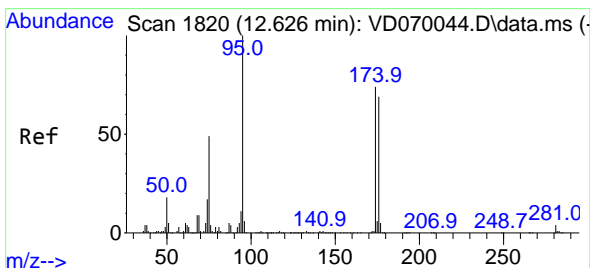
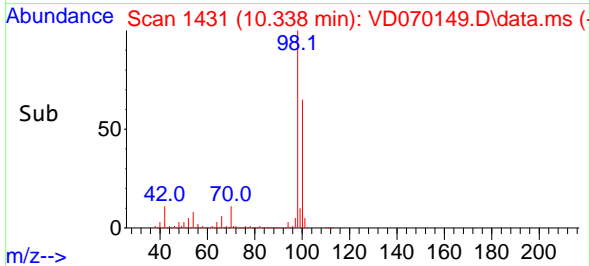
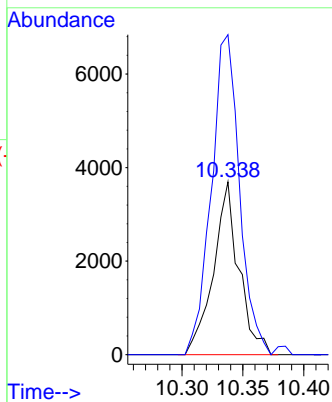
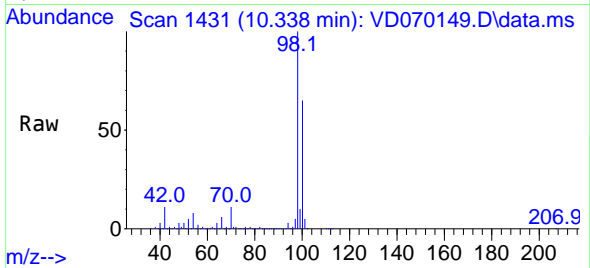




#51  
 4-Methyl-2-Pentanone  
 Concen: 1.326 ug/l  
 RT: 10.338 min Scan# 1431  
 Delta R.T. 0.112 min  
 Lab File: VD070149.D  
 Acq: 19 Aug 2021 03:20

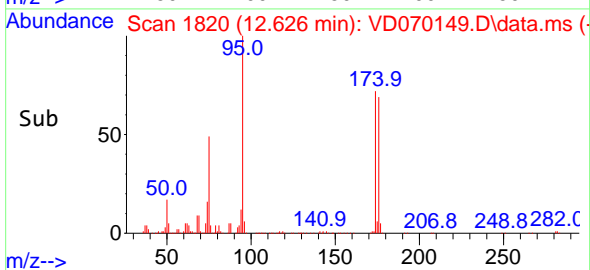
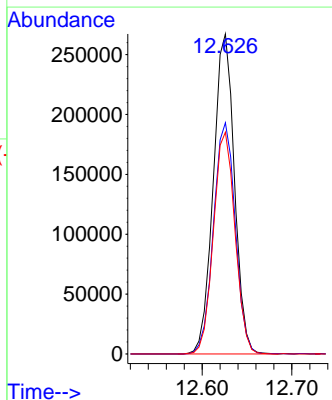
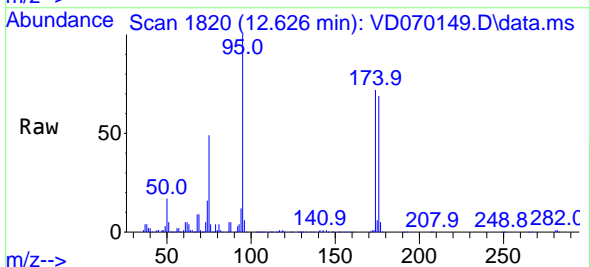
**Instrument :**  
 MSVOA\_D  
**ClientSampled :**  
 SWCS-14-0002

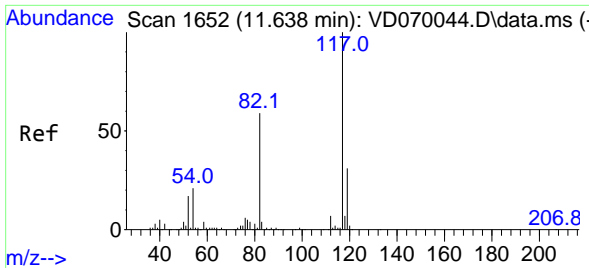
Tgt Ion: 43 Resp: 5394  
 Ion Ratio Lower Upper  
 43 100  
 58 204.7 33.9 50.9#



#62  
 4-Bromofluorobenzene  
 Concen: 49.087 ug/l  
 RT: 12.626 min Scan# 1820  
 Delta R.T. 0.000 min  
 Lab File: VD070149.D  
 Acq: 19 Aug 2021 03:20

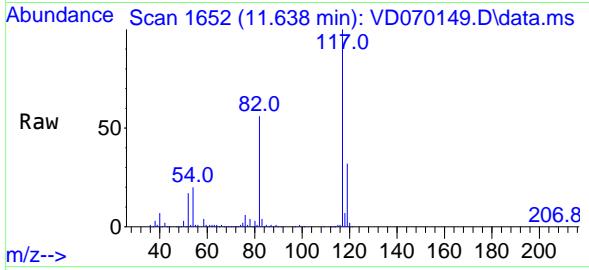
Tgt Ion: 95 Resp: 435850  
 Ion Ratio Lower Upper  
 95 100  
 174 74.7 0.0 141.6  
 176 70.8 0.0 138.2



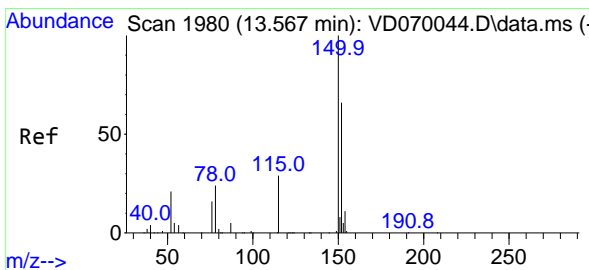
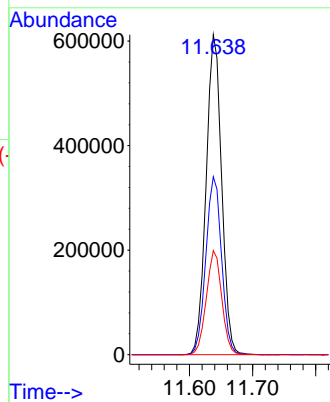
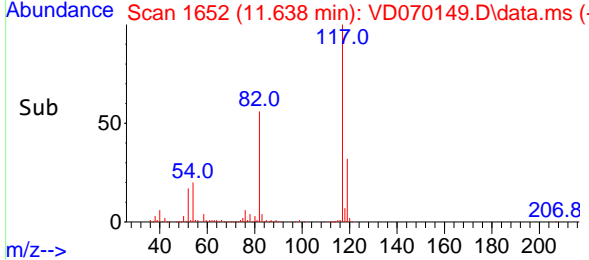


#63  
 Chlorobenzene-d5  
 Concen: 50.000 ug/l  
 RT: 11.638 min Scan# 1652  
 Delta R.T. 0.000 min  
 Lab File: VD070149.D  
 Acq: 19 Aug 2021 03:20

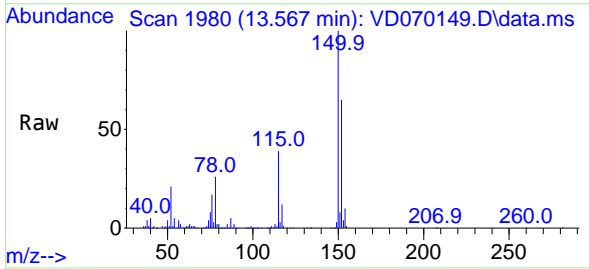
Instrument :  
 MSVOA\_D  
 ClientSampleId :  
 SWCS-14-0002



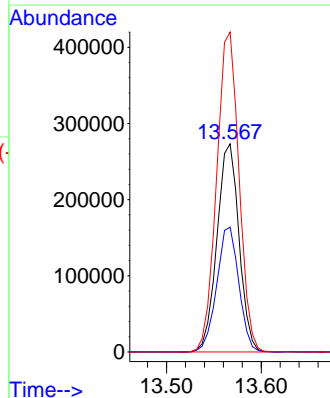
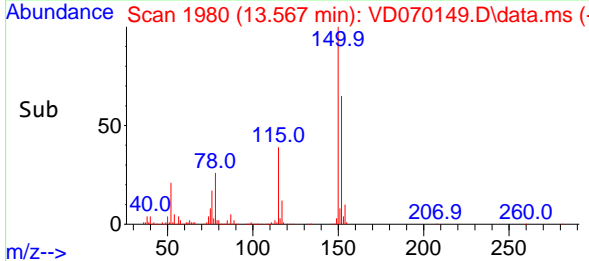
Tgt Ion:117 Resp: 1042694  
 Ion Ratio Lower Upper  
 117 100  
 82 55.6 47.5 71.3  
 119 32.5 25.1 37.7

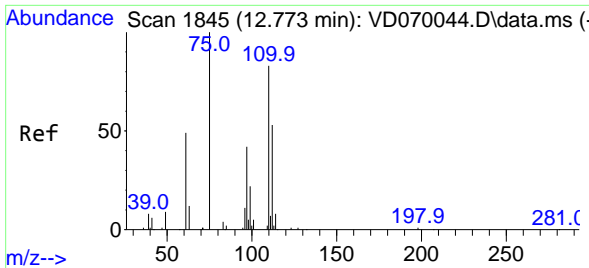


#72  
 1,4-Dichlorobenzene-d4  
 Concen: 50.000 ug/l  
 RT: 13.567 min Scan# 1980  
 Delta R.T. 0.000 min  
 Lab File: VD070149.D  
 Acq: 19 Aug 2021 03:20



Tgt Ion:152 Resp: 442540  
 Ion Ratio Lower Upper  
 152 100  
 115 60.2 31.2 93.6  
 150 155.8 0.0 352.0

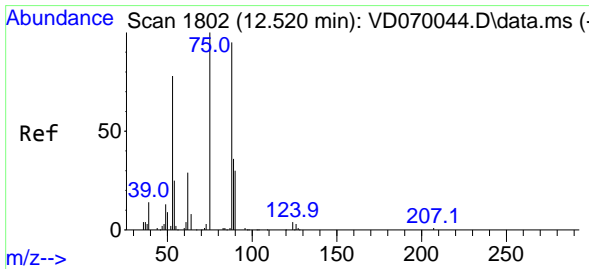
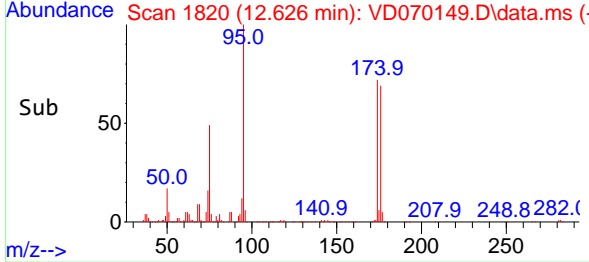
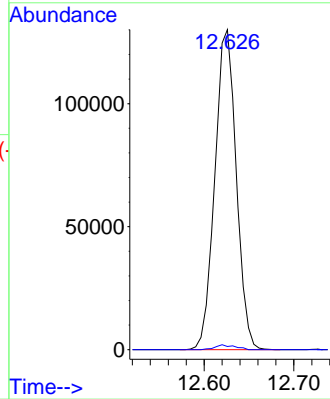
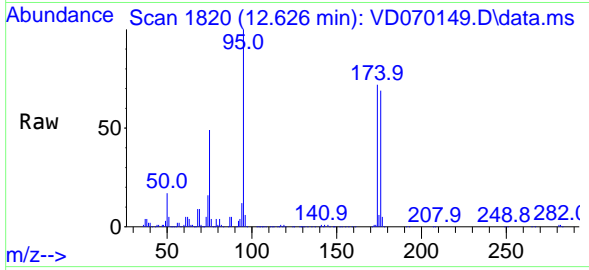




#76  
 1,2,3-Trichloropropane  
 Concen: 47.979 ug/l  
 RT: 12.626 min Scan# 1820  
 Delta R.T. -0.147 min  
 Lab File: VD070149.D  
 Acq: 19 Aug 2021 03:20

Instrument :  
 MSVOA\_D  
 ClientSampleId :  
 SWCS-14-0002

Tgt Ion: 75 Resp: 215326  
 Ion Ratio Lower Upper  
 75 100  
 77 1.4 182.4 547.2#



#81  
 trans-1,4-Dichloro-2-butene  
 Concen: 124.535 ug/l  
 RT: 12.626 min Scan# 1820  
 Delta R.T. 0.106 min  
 Lab File: VD070149.D  
 Acq: 19 Aug 2021 03:20

Tgt Ion: 75 Resp: 215326  
 Ion Ratio Lower Upper  
 75 100  
 53 0.2 64.5 96.7#  
 89 0.0 33.7 50.5#

