

Data Path : Z:\VOASRV\HPCHEM1\MSVOA D\DATA\VD082318\
 Data File : VD059886.D
 Acq On : 23 Aug 2018 14:14
 Operator : JC/SY
 Sample : J4535-05RE
 Misc : 5.00µ/5ml/MSVOA D/SOIL
 ALS Vial : 7 Sample Multiplier: 1

Instrument :
 MSVOA_D
ClientSampleId :
 RA-081618-ESW-15-037RE

Quant Time: Aug 23 15:01:03 2018
 Quant Method : Z:\VOASRV\HPCHEM1\MSVOA_D\METHOD\82D082218S.M
 Quant Title : SW846 8260
 QLast Update : Thu Aug 23 03:03:08 2018
 Response via : Initial Calibration

Internal Standards	R.T.	QIon	Response	Conc	Units	Dev(Min)
1) Pentafluorobenzene	6.39	168	747062	50.00	µg/l	-0.02
34) 1,4-Difluorobenzene	7.43	114	929522	50.00	µg/l	-0.02
63) Chlorobenzene-d5	11.28	117	544622	50.00	µg/l	-0.02
72) 1,4-Dichlorobenzene-d4	13.37	152	147333	50.00	µg/l	0.00

System Monitoring Compounds	R.T.	QIon	Response	Conc	Units	Dev(Min)
33) 1,2-Dichloroethane-d4	6.77	65	348722	55.38	µg/l	-0.03
Spiked Amount				50.000		
Recovery						= 110.76%
35) Dibromofluoromethane	6.31	113	442952	60.78	µg/l	-0.03
Spiked Amount				50.000		
Recovery						= 121.56%
50) Toluene-d8	9.45	98	1091338	53.96	µg/l	-0.02
Spiked Amount				50.000		
Recovery						= 107.92%
62) 4-Bromofluorobenzene	12.42	95	254325	30.96	µg/l	-0.02
Spiked Amount				50.000		
Recovery						= 61.92%

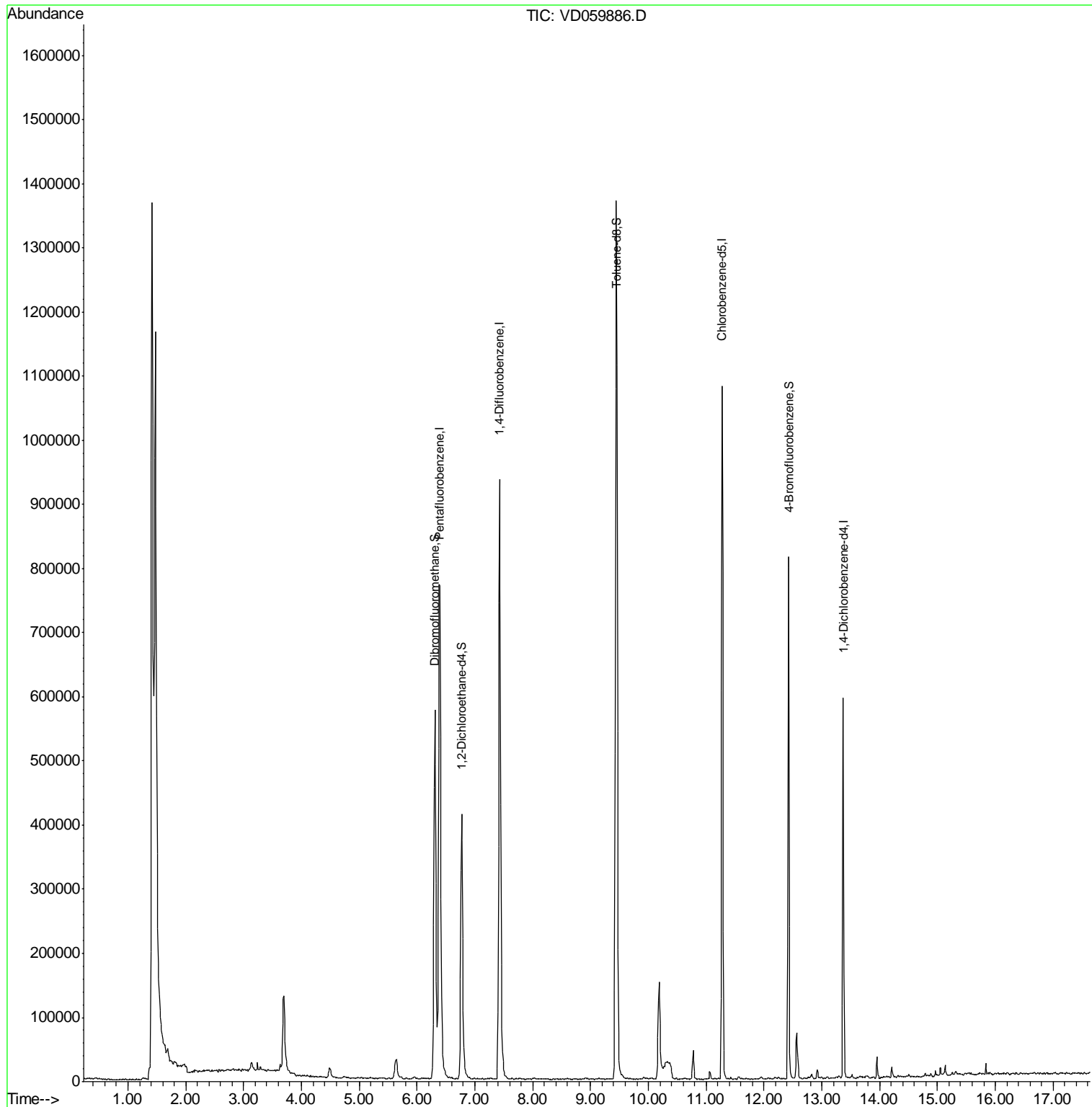
Target Compounds Qvalue

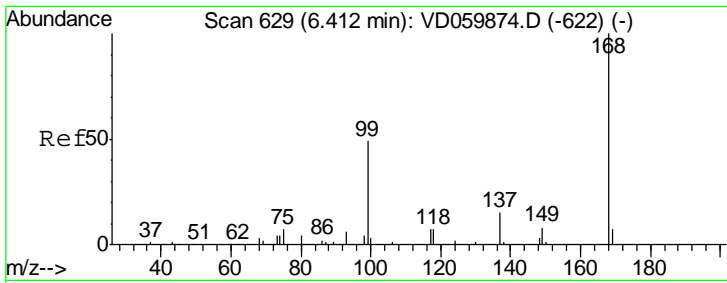
(#) = qualifier out of range (m) = manual integration (+) = signals summed

Data Path : Z:\VOASRV\HPCHEM1\MSVOA D\DATA\VD082318\
 Data File : VD059886.D
 Acq On : 23 Aug 2018 14:14
 Operator : JC/SY
 Sample : J4535-05RE
 Misc : 5.00µ/5ml/MSVOA D/SOIL
 ALS Vial : 7 Sample Multiplier: 1

Instrument :
 MSVOA_D
 ClientSampleId :
 RA-081618-ESW-15-037RE

Quant Time: Aug 23 15:01:03 2018
 Quant Method : Z:\VOASRV\HPCHEM1\MSVOA_D\METHOD\82D082218S.M
 Quant Title : SW846 8260
 QLast Update : Thu Aug 23 03:03:08 2018
 Response via : Initial Calibration

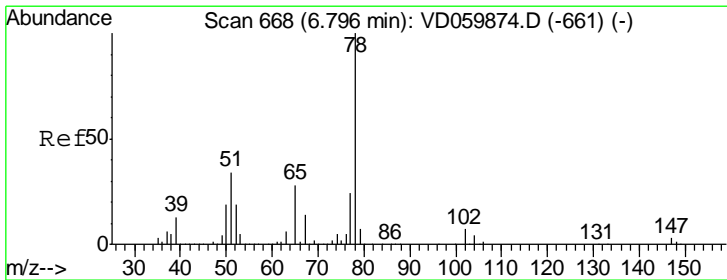
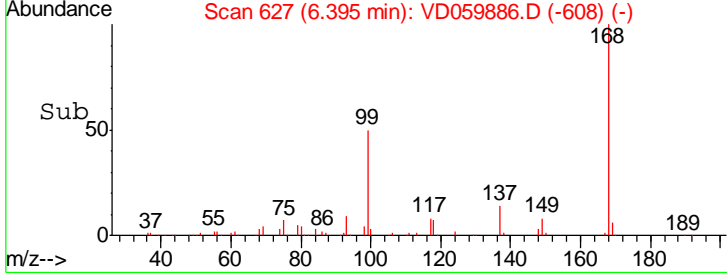
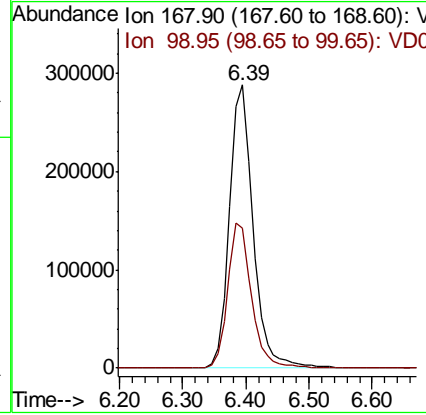
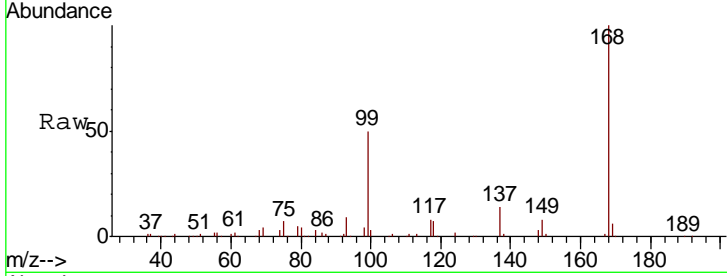




#1
 Pentafluorobenzene
 Concen: 50.00 ug/l
 RT: 6.39 min Scan# 627
 Delta R.T. -0.02 min
 Lab File: VD059886.D
 Acq: 23 Aug 2018 14:14

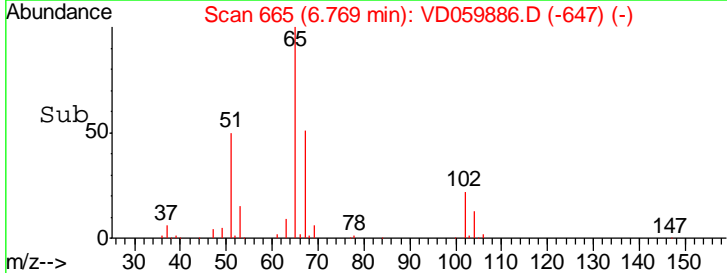
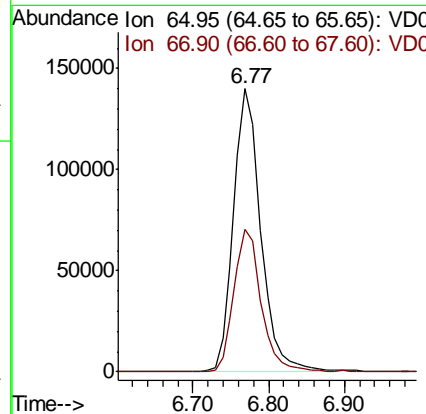
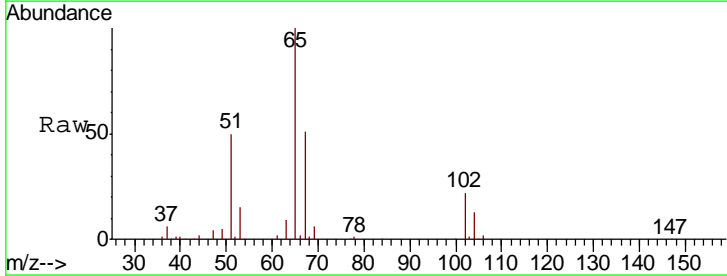
Instrument : MSVOA_D
 ClientSampled : RA-081618-ESW-15-037RE

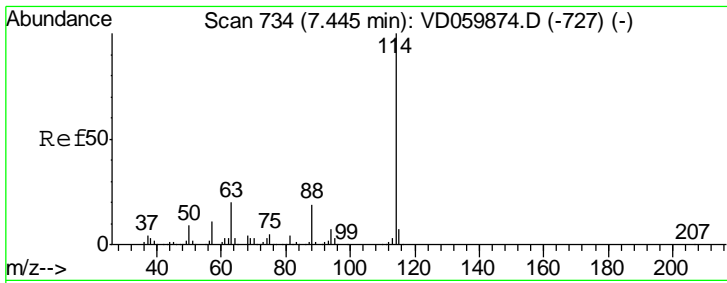
Tgt Ion	Resp	Lower	Upper
168	747062		
99	49.6	42.2	63.2



#33
 1,2-Dichloroethane-d4
 Concen: Below ug/l
 RT: 6.77 min Scan# 665
 Delta R.T. -0.03 min
 Lab File: VD059886.D
 Acq: 23 Aug 2018 14:14

Tgt Ion	Resp	Lower	Upper
65	348722		
67	50.6	0.0	103.8

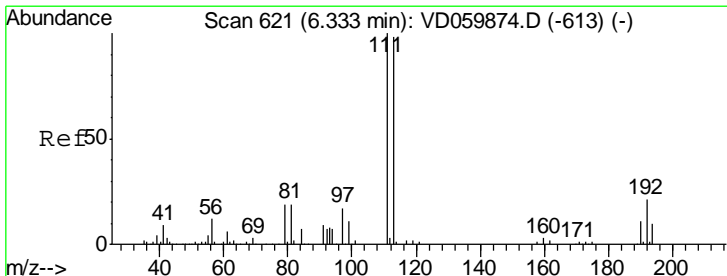
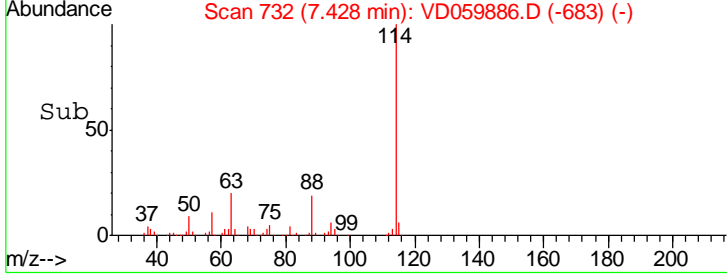
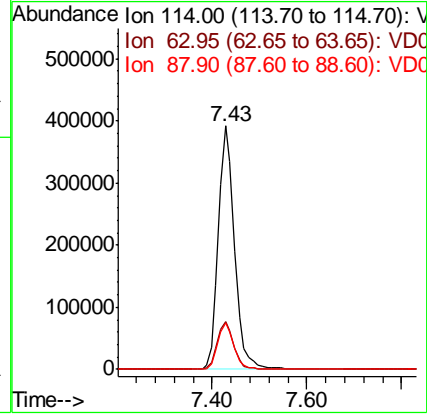
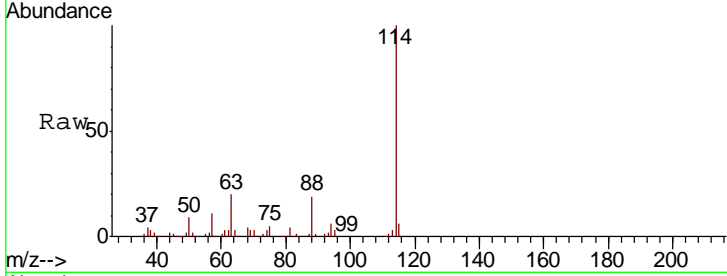




#34
 1,4-Difluorobenzene
 Concen: 50.00 ug/l
 RT: 7.43 min Scan# 732
 Delta R.T. -0.02 min
 Lab File: VD059886.D
 Acq: 23 Aug 2018 14:14

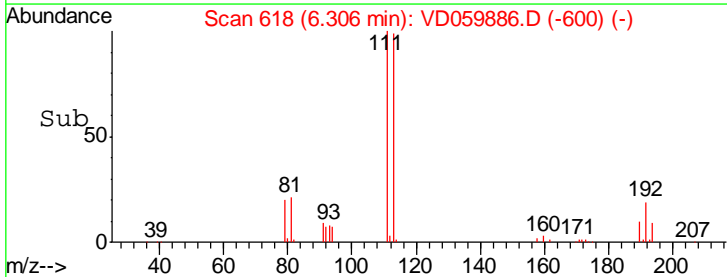
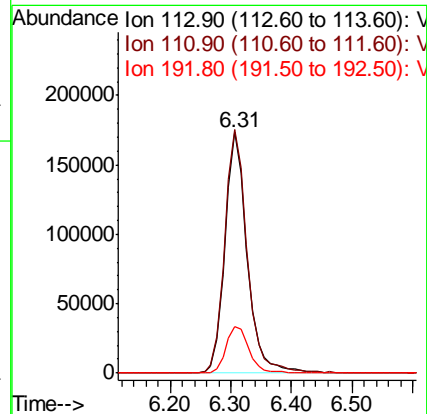
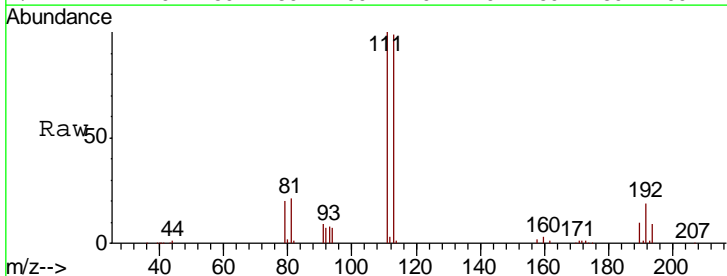
Instrument :
 MSVOA_D
ClientSampleId :
 RA-081618-ESW-15-037RE

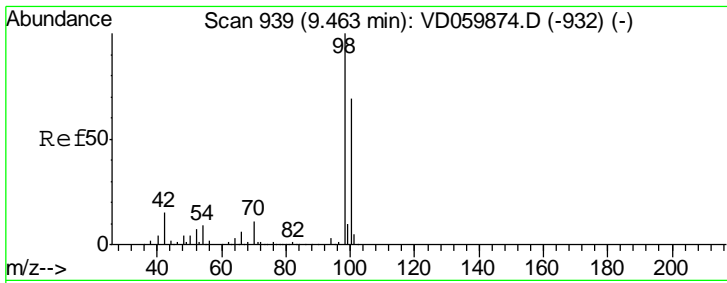
Tgt Ion	Resp	Lower	Upper
114	100		
63	19.6	0.0	39.4
88	19.1	0.0	37.6



#35
 Dibromofluoromethane
 Concen: 50.00 ug/l
 RT: 6.31 min Scan# 618
 Delta R.T. -0.03 min
 Lab File: VD059886.D
 Acq: 23 Aug 2018 14:14

Tgt Ion	Resp	Lower	Upper
113	100		
111	101.1	81.4	122.2
192	19.4	17.0	25.6

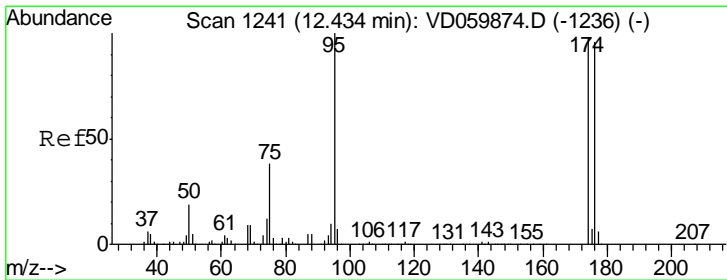
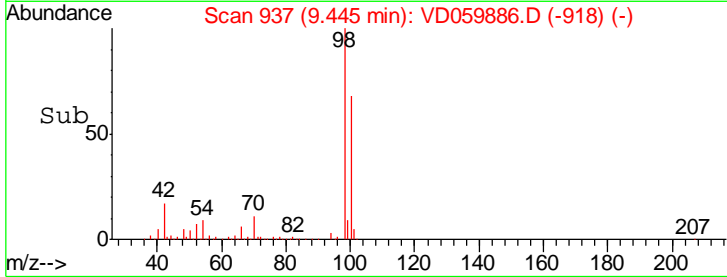
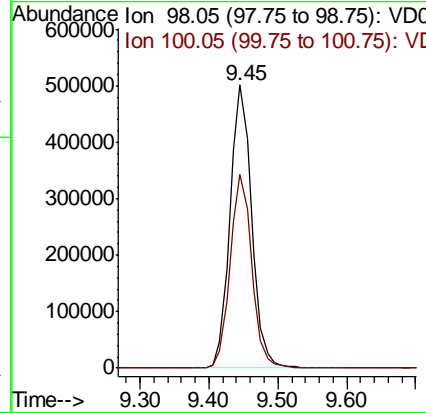
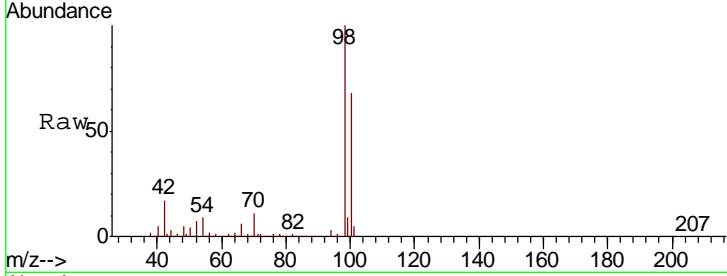




#50
 Toluene-d8
 Concen: N.D. ug/l
 RT: 9.45 min Scan# 937
 Delta R.T. -0.02 min
 Lab File: VD059886.D
 Acq: 23 Aug 2018 14:14

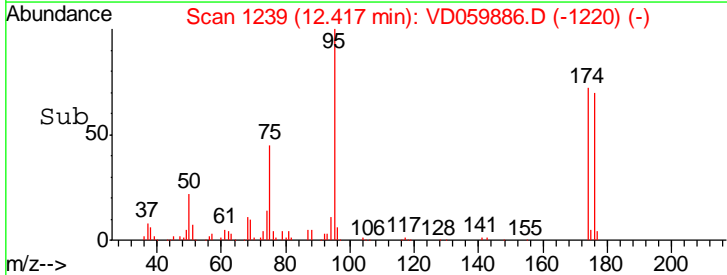
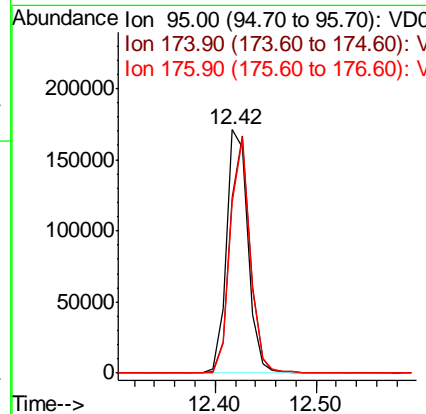
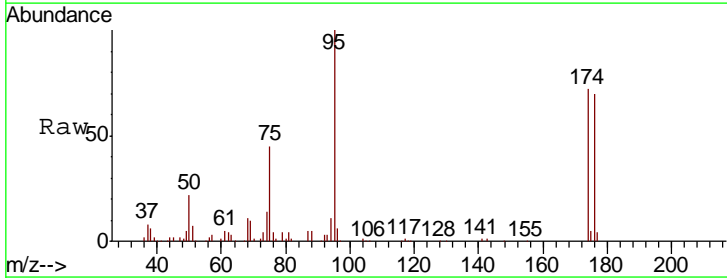
Instrument :
 MSVOA_D
 ClientSampleID :
 RA-081618-ESW-15-037RE

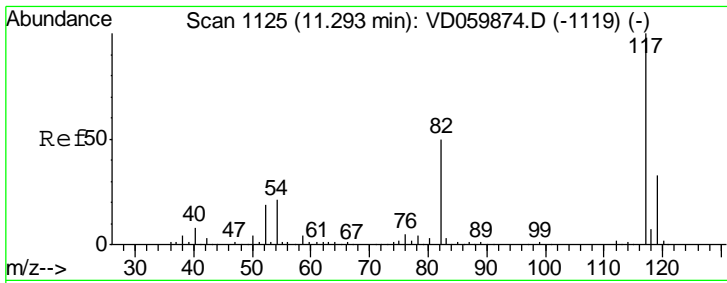
Tgt Ion: 98 Resp: 1091338
 Ion Ratio Lower Upper
 98 100
 100 68.5 55.8 83.6



#62
 4-Bromofluorobenzene
 Concen: N.D. ug/l
 RT: 12.42 min Scan# 1239
 Delta R.T. -0.02 min
 Lab File: VD059886.D
 Acq: 23 Aug 2018 14:14

Tgt Ion: 95 Resp: 254325
 Ion Ratio Lower Upper
 95 100
 174 72.4 0.0 195.6
 176 70.2 0.0 191.2

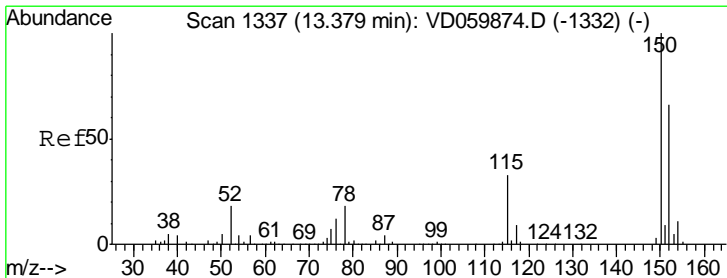
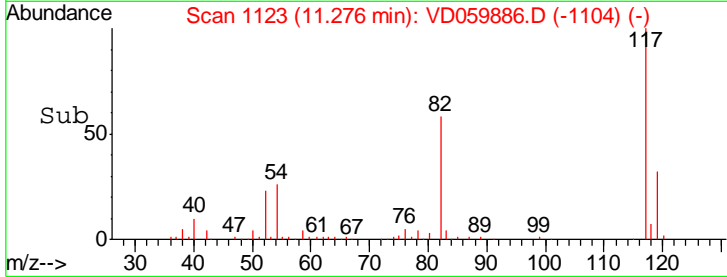
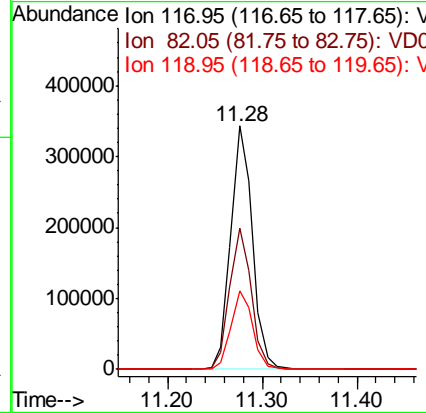
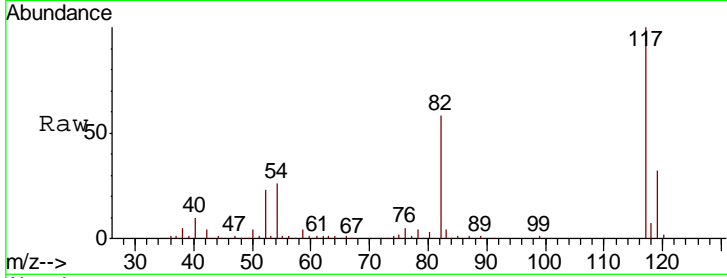




#63
 Chlorobenzene-d5
 Concen: 50.00 ug/l
 RT: 11.28 min Scan# 1123
 Delta R.T. -0.02 min
 Lab File: VD059886.D
 Acq: 23 Aug 2018 14:14

Instrument : MSVOA_D
 ClientSampleId : RA-081618-ESW-15-037RE

Tgt Ion	Resp	Lower	Upper
117	100		
82	58.1	40.1	60.1
119	32.3	26.7	40.1



#72
 1,4-Dichlorobenzene-d4
 Concen: 50.00 ug/l
 RT: 13.37 min Scan# 1336
 Delta R.T. -0.01 min
 Lab File: VD059886.D
 Acq: 23 Aug 2018 14:14

Tgt Ion	Resp	Lower	Upper
152	100		
115	49.9	25.7	77.0
150	153.6	0.0	310.2

