

Data Path : Z:\VOASRV\HPCHEM1\MSVOA D\DATA\VD082319\  
 Data File : VD063761.D  
 Acq On : 23 Aug 2019 12:54  
 Operator : JC/SY  
 Sample : K4491-05RE  
 Misc : 4.66µ/5ml/MSVOA D/SOIL  
 ALS Vial : 18 Sample Multiplier: 1

Instrument :  
 MSVOA\_D  
 ClientSampleId :  
 TS-1-VSRE

Quant Time: Aug 26 01:30:18 2019  
 Quant Method : Z:\VOASRV\HPCHEM1\MSVOA\_D\METHOD\82D080919S.M  
 Quant Title : SW846 8260  
 QLast Update : Sat Aug 10 06:42:47 2019  
 Response via : Initial Calibration

Internal Standards	R.T.	QIon	Response	Conc	Units	Dev(Min)
1) Pentafluorobenzene	7.04	168	843552	50.00	µg/l	-0.03
34) 1,4-Difluorobenzene	8.21	114	1105867	50.00	µg/l	-0.03
63) Chlorobenzene-d5	12.36	117	684442	50.00	µg/l	-0.02
72) 1,4-Dichlorobenzene-d4	14.52	152	142129	50.00	µg/l	0.00

System Monitoring Compounds	R.T.	QIon	Response	Conc	Units	Dev(Min)
33) 1,2-Dichloroethane-d4	7.45	65	610490	67.70	µg/l	-0.02
Spiked Amount				50.000		
Recovery						= 135.40%
35) Dibromofluoromethane	6.92	113	697869	74.93	µg/l	-0.02
Spiked Amount				50.000		
Recovery						= 149.86%
50) Toluene-d8	10.40	98	1303314	63.65	µg/l	-0.02
Spiked Amount				50.000		
Recovery						= 127.30%
62) 4-Bromofluorobenzene	13.55	95	273854	29.51	µg/l	0.00
Spiked Amount				50.000		
Recovery						= 59.02%

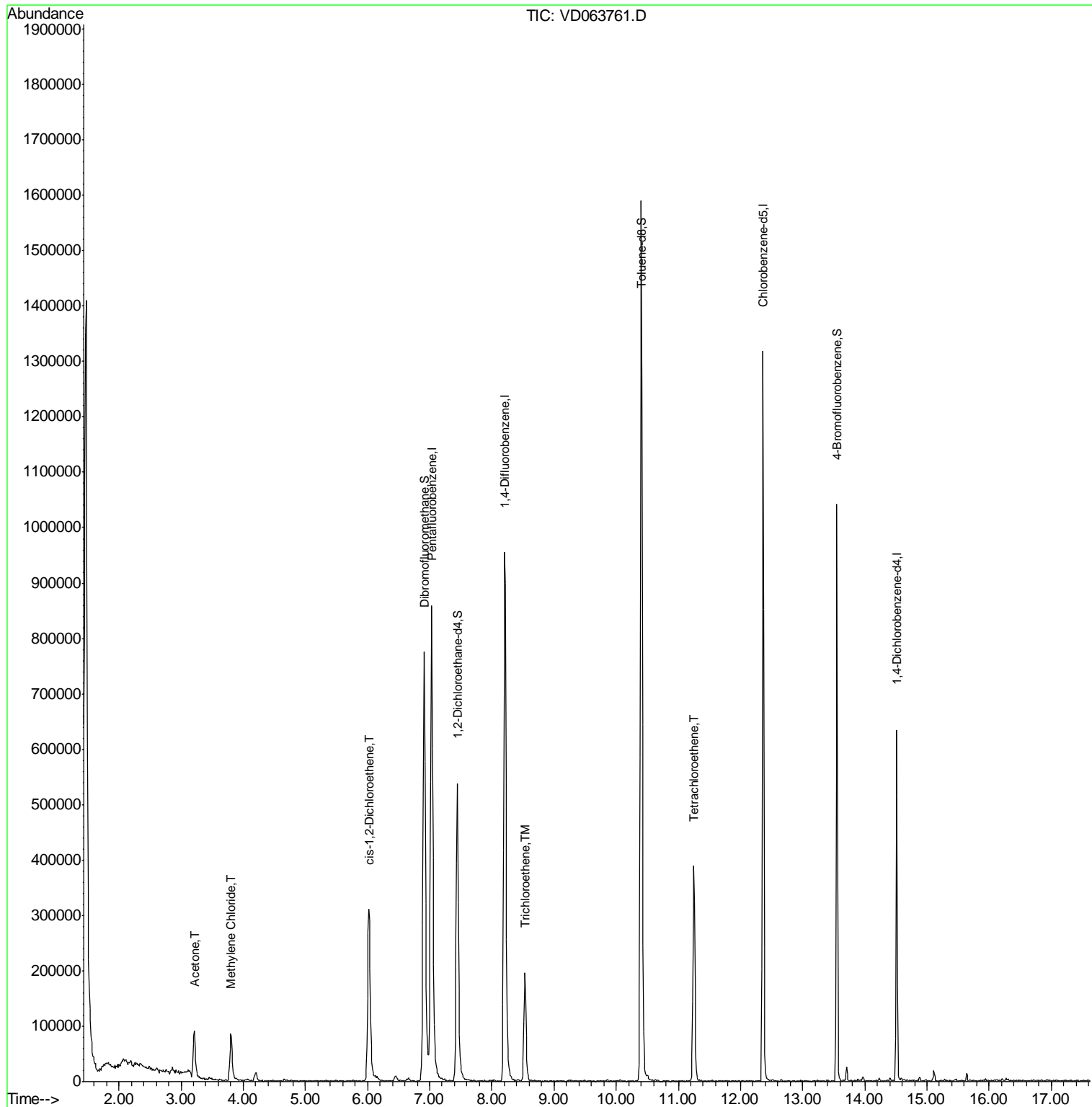
Target Compounds	R.T.	QIon	Response	Conc	Units	Qvalue
16) Acetone	3.22	43	170861	93.216	µg/l	98
20) Methylene Chloride	3.80	84	47784	6.029	µg/l #	87
27) cis-1,2-Dichloroethene	6.02	96	197507	25.167	µg/l	96
44) Trichloroethene	8.53	130	88270	10.734	µg/l	96
64) Tetrachloroethene	11.25	164	113703	21.520	µg/l	95

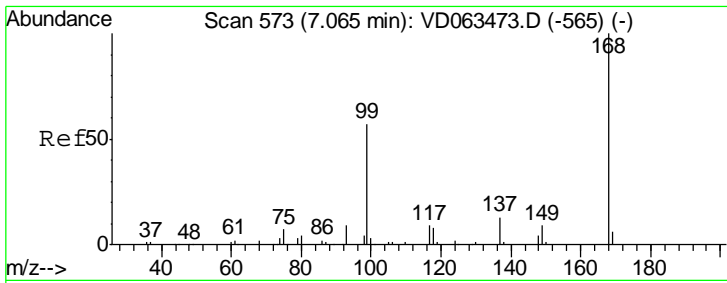
(#) = qualifier out of range (m) = manual integration (+) = signals summed

Data Path : Z:\VOASRV\HPCHEM1\MSVOA D\DATA\VD082319\  
 Data File : VD063761.D  
 Acq On : 23 Aug 2019 12:54  
 Operator : JC/SY  
 Sample : K4491-05RE  
 Misc : 4.66µ/5ml/MSVOA D/SOIL  
 ALS Vial : 18 Sample Multiplier: 1

Instrument :  
 MSVOA\_D  
 ClientSampleID :  
 TS-1-VSRE

Quant Time: Aug 26 01:30:18 2019  
 Quant Method : Z:\VOASRV\HPCHEM1\MSVOA\_D\METHOD\82D080919S.M  
 Quant Title : SW846 8260  
 QLast Update : Sat Aug 10 06:42:47 2019  
 Response via : Initial Calibration

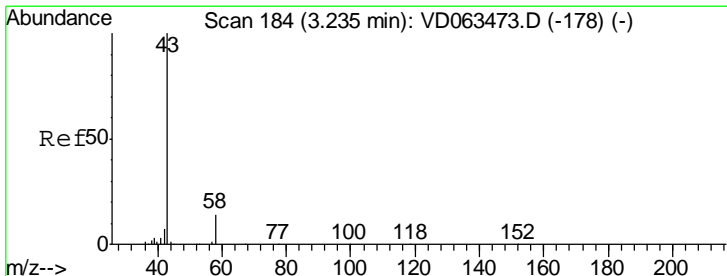
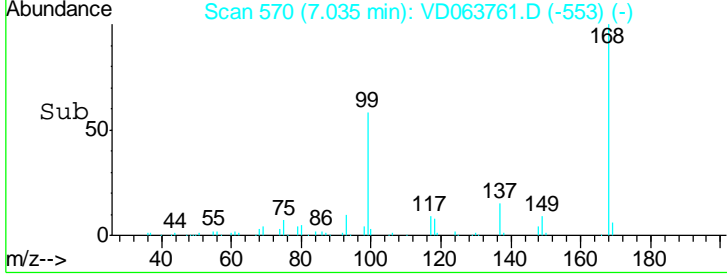
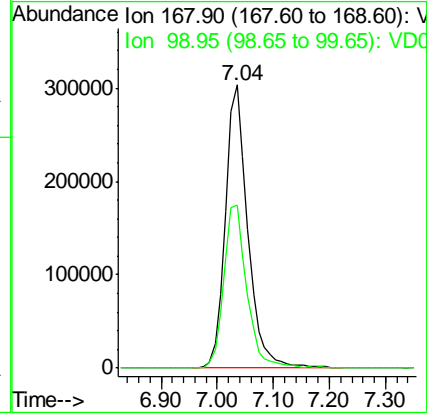
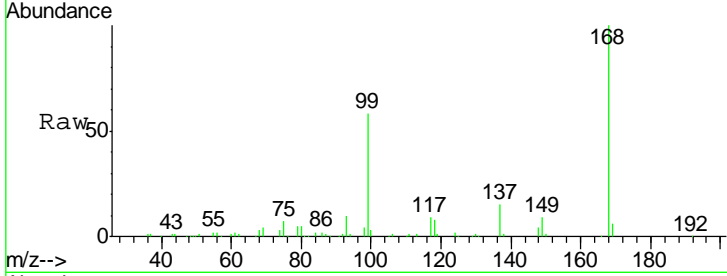




#1  
 Pentafluorobenzene  
 Concen: 50.000 ug/l  
 RT: 7.04 min Scan# 570  
 Delta R.T. -0.03 min  
 Lab File: VD063761.D  
 Acq: 23 Aug 2019 12:54

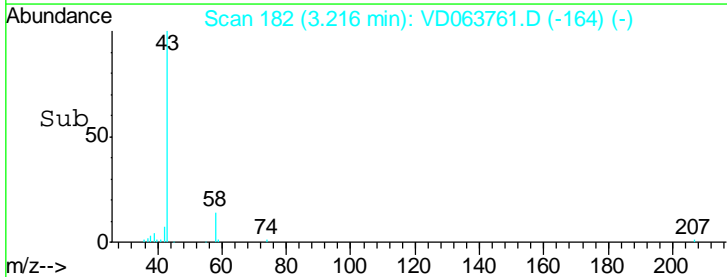
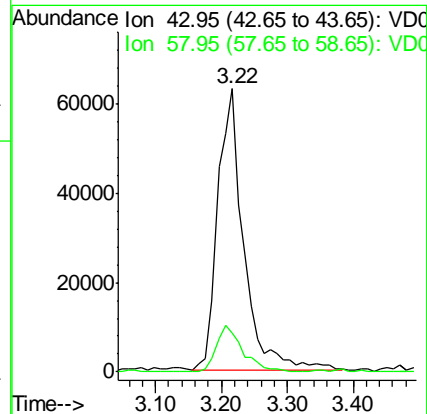
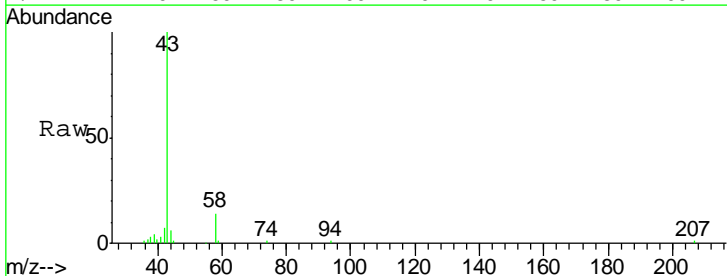
Instrument : MSVOA\_D  
 ClientSampled : TS-1-VSRE

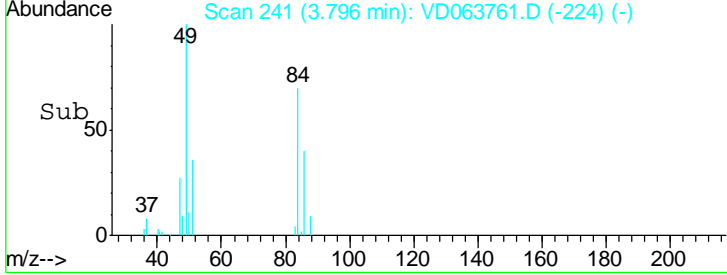
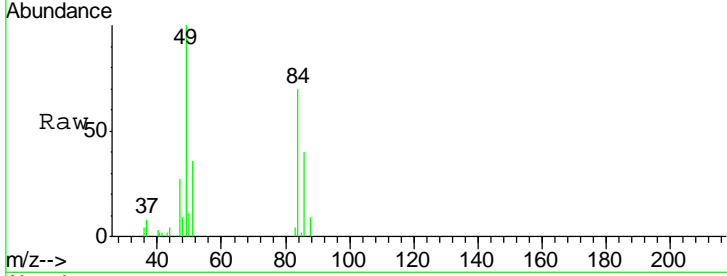
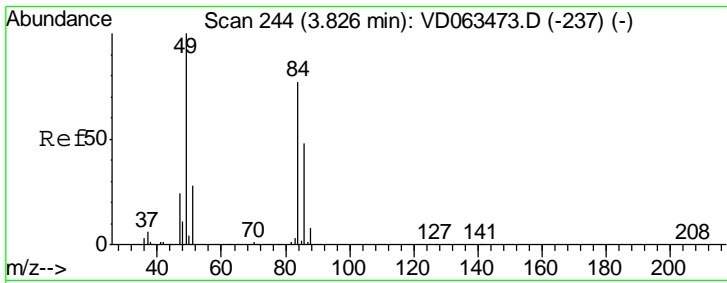
Tgt Ion	Resp	Lower	Upper
168	100		
99	57.8	46.7	70.1



#16  
 Acetone  
 Concen: 93.216 ug/l  
 RT: 3.22 min Scan# 182  
 Delta R.T. -0.02 min  
 Lab File: VD063761.D  
 Acq: 23 Aug 2019 12:54

Tgt Ion	Resp	Lower	Upper
43	100		
58	13.6	11.4	17.2

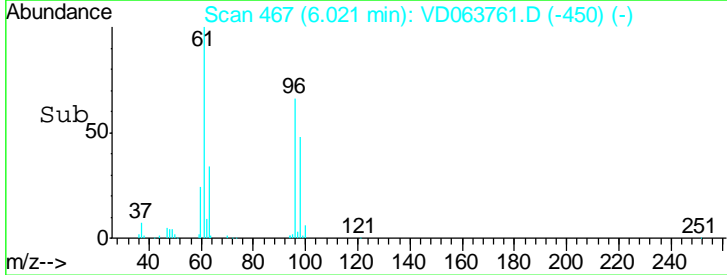
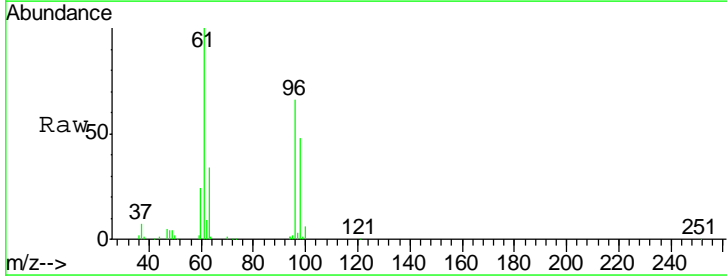
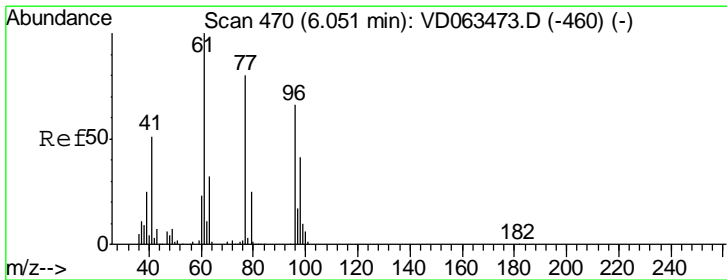
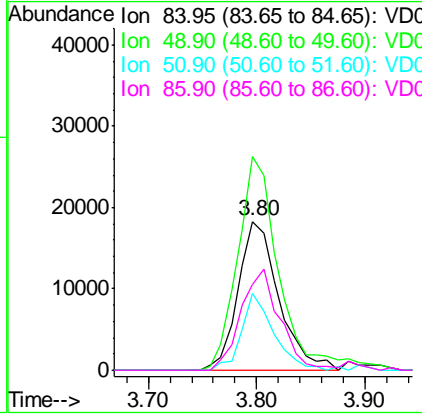




#20  
 Methylene Chloride  
 Concen: 6.029 ug/l  
 RT: 3.80 min Scan# 241  
 Delta R.T. -0.03 min  
 Lab File: VD063761.D  
 Acq: 23 Aug 2019 12:54

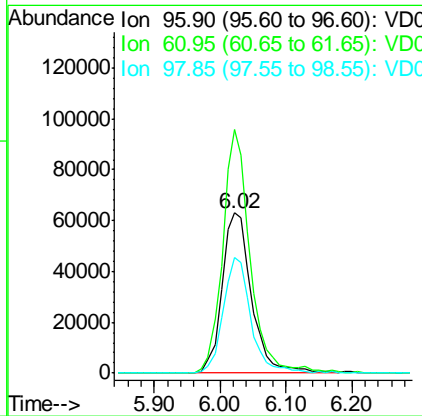
**Instrument :**  
 MSVOA\_D  
**ClientSampled :**  
 TS-1-VSRE

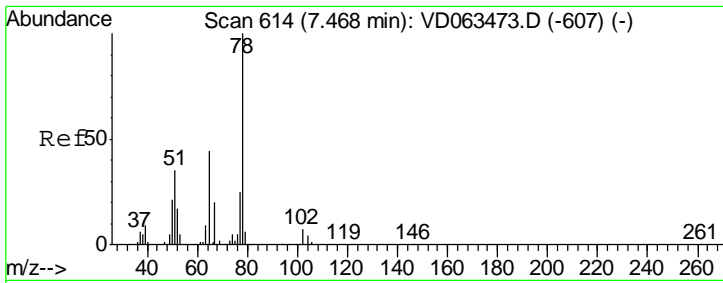
Tgt Ion	Resp	Lower	Upper
84	47784		
49	143.7	103.4	155.2
51	51.7	28.5	42.7#
86	57.4	49.4	74.2



#27  
 cis-1,2-Dichloroethene  
 Concen: 25.167 ug/l  
 RT: 6.02 min Scan# 467  
 Delta R.T. -0.03 min  
 Lab File: VD063761.D  
 Acq: 23 Aug 2019 12:54

Tgt Ion	Resp	Lower	Upper
96	197507		
61	151.9	0.0	304.0
98	72.4	0.0	124.8

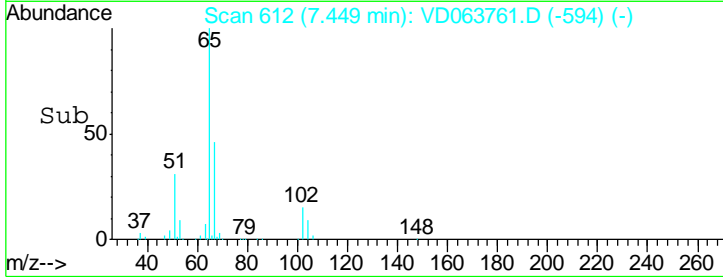
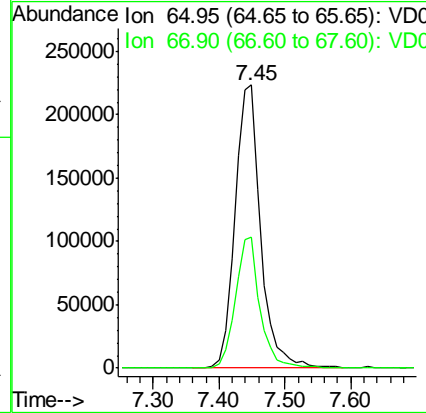
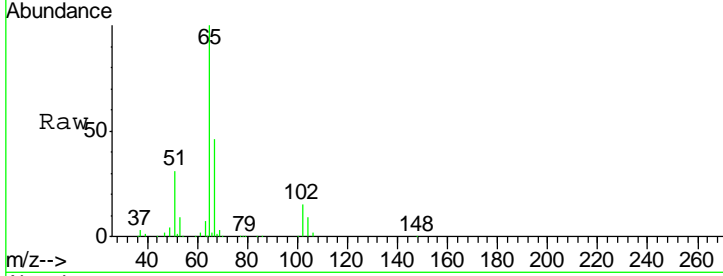




#33  
 1,2-Dichloroethane-d4  
 Concen: 67.705 ug/l  
 RT: 7.45 min Scan# 612  
 Delta R.T. -0.02 min  
 Lab File: VD063761.D  
 Acq: 23 Aug 2019 12:54

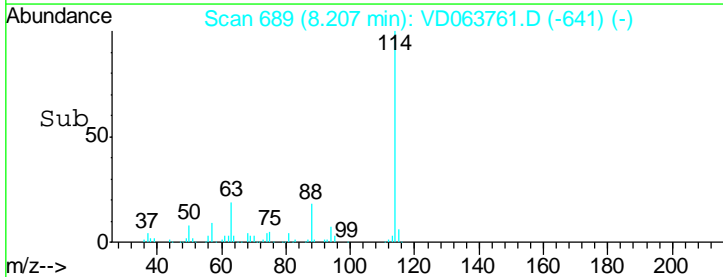
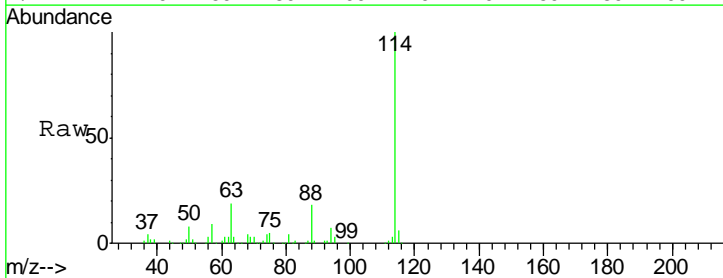
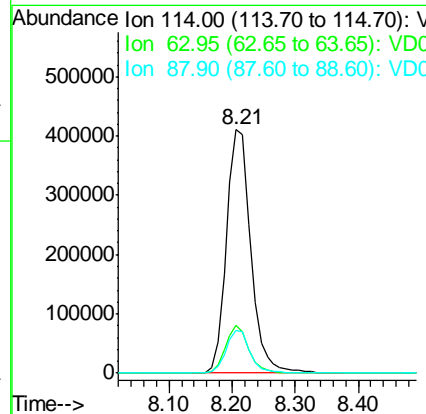
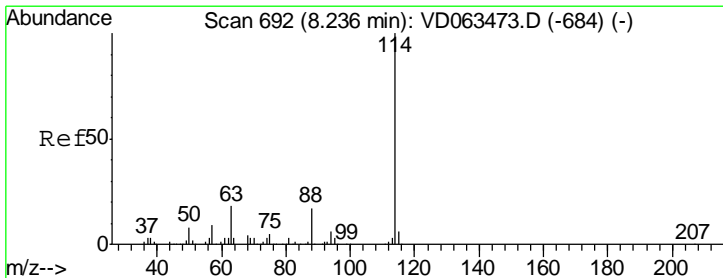
**Instrument :**  
 MSVOA\_D  
**ClientSampled :**  
 TS-1-VSRE

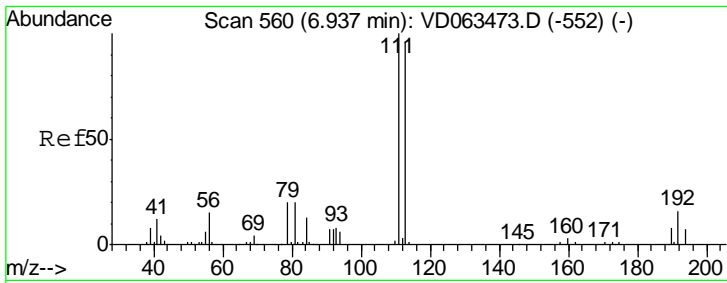
Tgt Ion	Resp	Lower	Upper
65	100		
67	46.3	0.0	89.2



#34  
 1,4-Difluorobenzene  
 Concen: 50.000 ug/l  
 RT: 8.21 min Scan# 689  
 Delta R.T. -0.03 min  
 Lab File: VD063761.D  
 Acq: 23 Aug 2019 12:54

Tgt Ion	Resp	Lower	Upper
114	100		
63	19.4	0.0	36.2
88	17.7	0.0	35.0

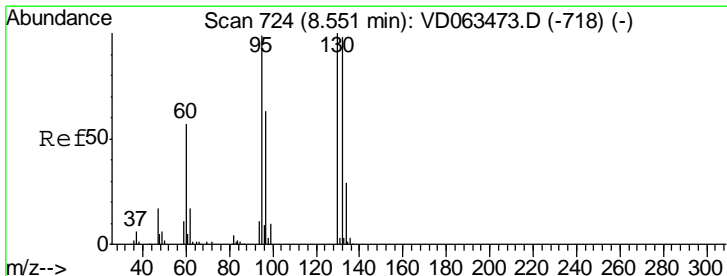
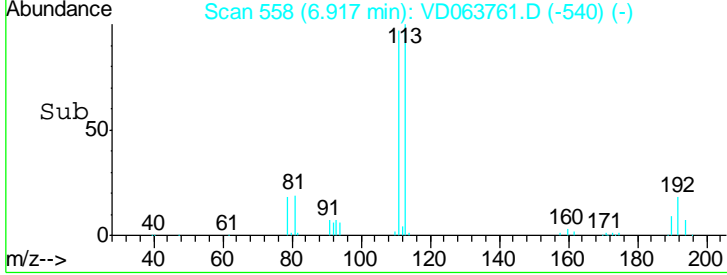
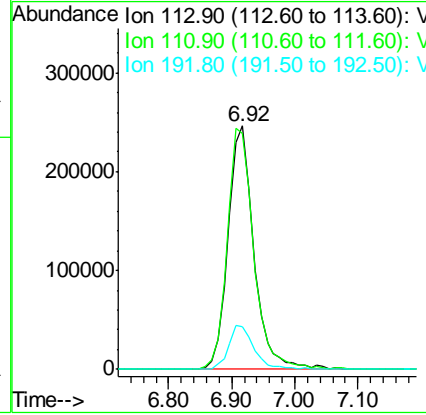
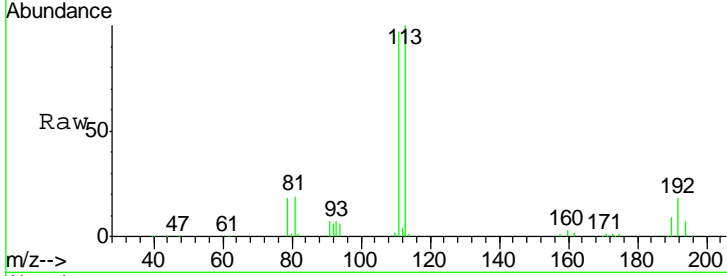




#35  
 Dibromofluoromethane  
 Concen: 74.929 ug/l  
 RT: 6.92 min Scan# 558  
 Delta R.T. -0.02 min  
 Lab File: VD063761.D  
 Acq: 23 Aug 2019 12:54

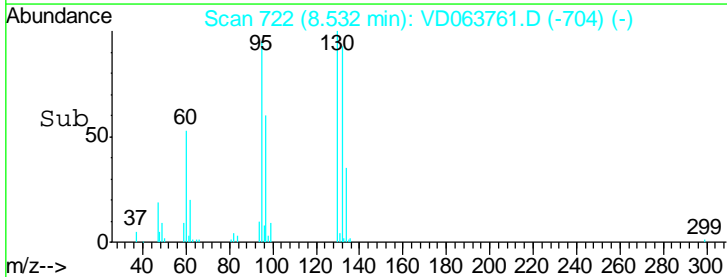
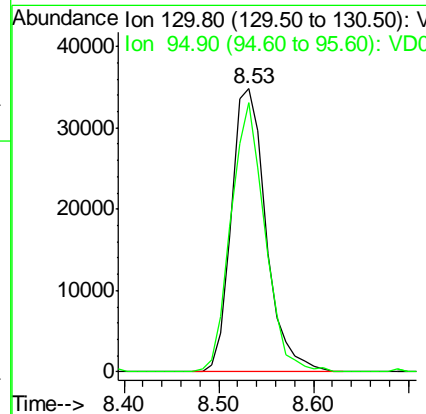
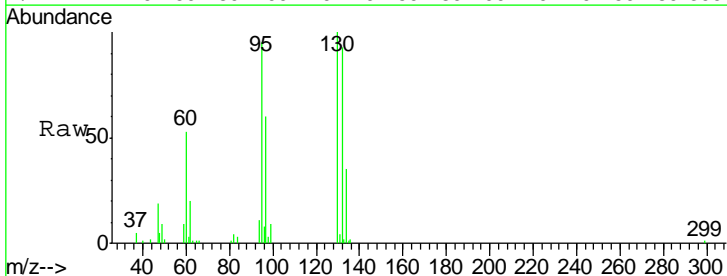
Instrument :  
 MSVOA\_D  
 ClientSampled :  
 TS-1-VSRE

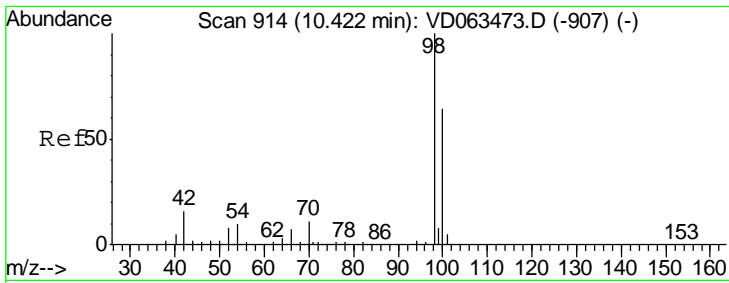
Tgt Ion	Resp	Lower	Upper
113	100		
111	97.0	83.1	124.7
192	17.6	13.1	19.7



#44  
 Trichloroethene  
 Concen: 10.734 ug/l  
 RT: 8.53 min Scan# 722  
 Delta R.T. -0.02 min  
 Lab File: VD063761.D  
 Acq: 23 Aug 2019 12:54

Tgt Ion	Resp	Lower	Upper
130	100		
95	95.3	0.0	198.0

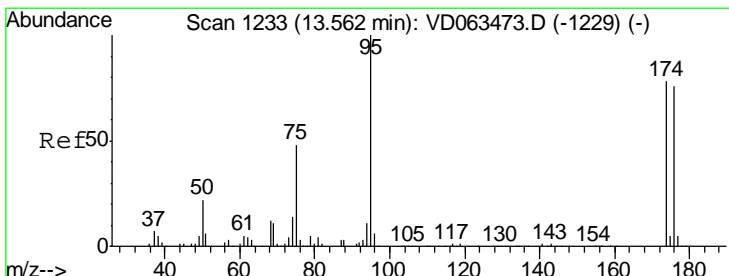
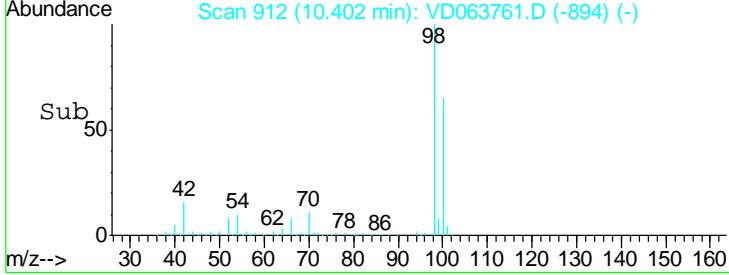
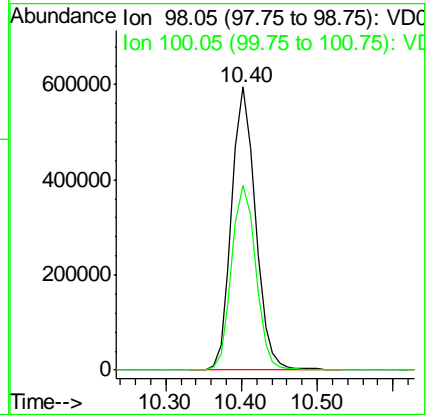
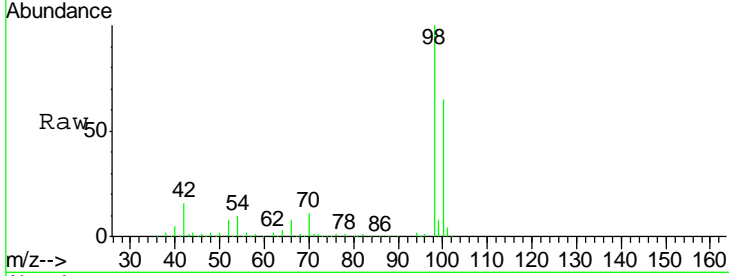




#50  
 Toluene-d8  
 Concen: 63.649 ug/l  
 RT: 10.40 min Scan# 912  
 Delta R.T. -0.02 min  
 Lab File: VD063761.D  
 Acq: 23 Aug 2019 12:54

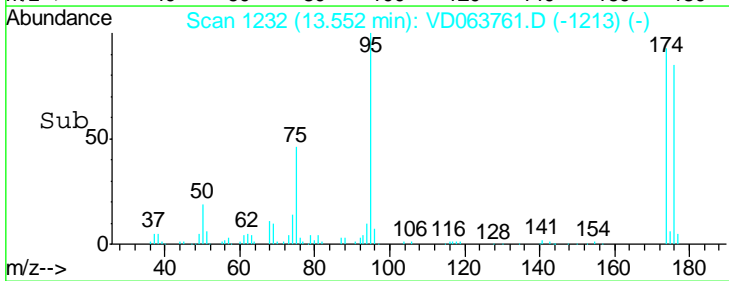
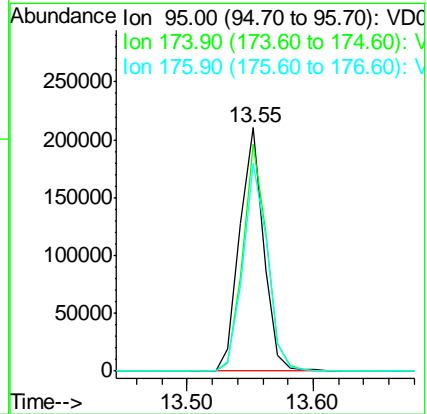
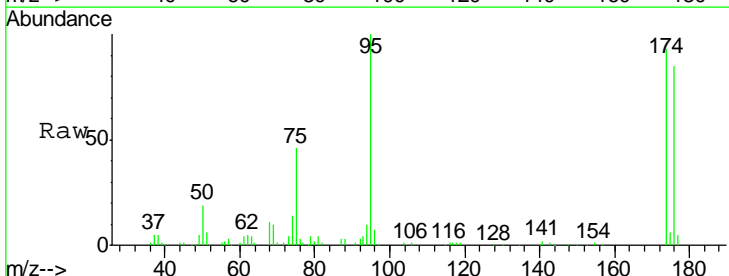
**Instrument :**  
 MSVOA\_D  
**ClientSampled :**  
 TS-1-VSRE

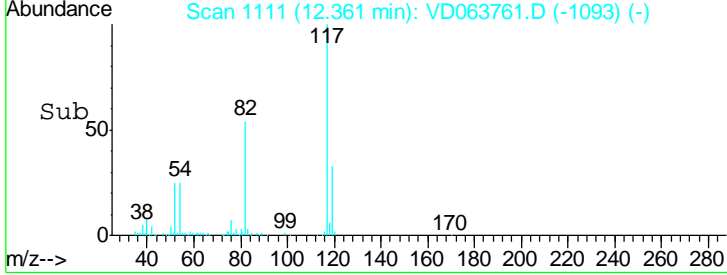
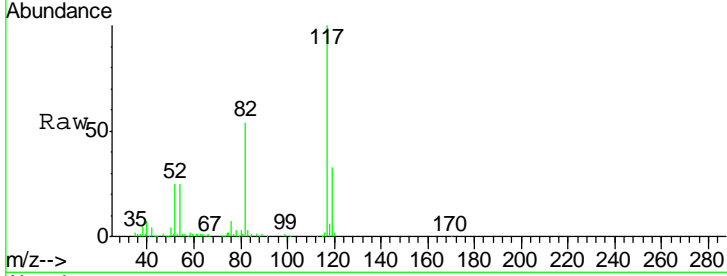
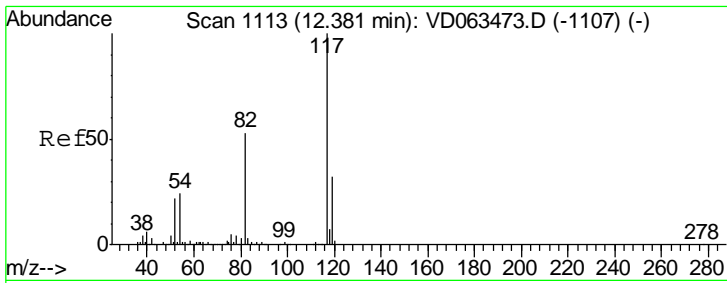
Tgt Ion: 98 Resp: 1303314  
 Ion Ratio Lower Upper  
 98 100  
 100 65.4 51.7 77.5



#62  
 4-Bromofluorobenzene  
 Concen: 29.507 ug/l  
 RT: 13.55 min Scan# 1232  
 Delta R.T. -0.01 min  
 Lab File: VD063761.D  
 Acq: 23 Aug 2019 12:54

Tgt Ion: 95 Resp: 273854  
 Ion Ratio Lower Upper  
 95 100  
 174 93.4 0.0 155.4  
 176 85.5 0.0 152.4

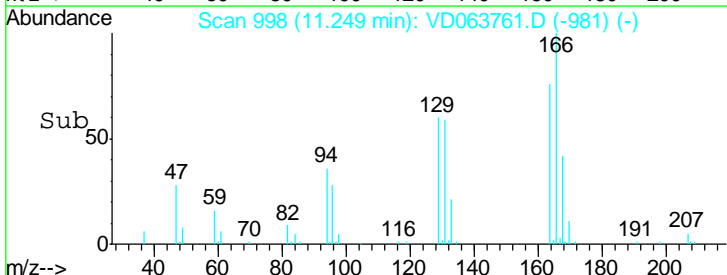
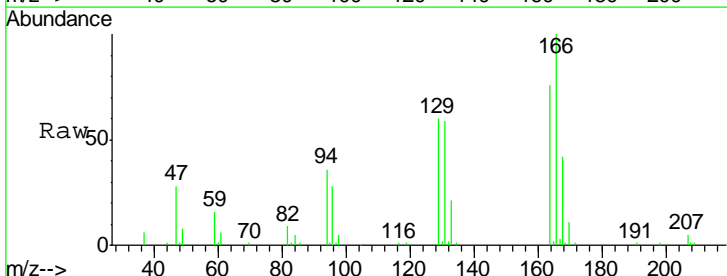
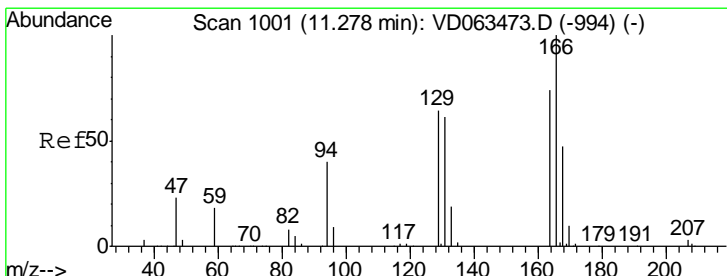
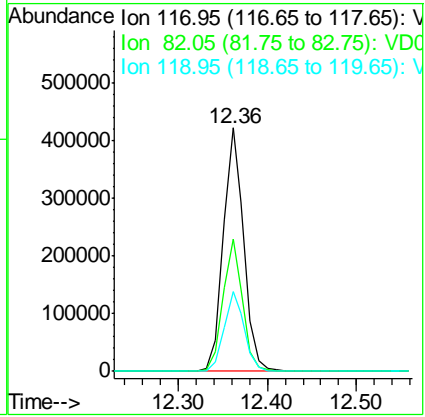




#63  
 Chlorobenzene-d5  
 Concen: 50.000 ug/l  
 RT: 12.36 min Scan# 1111  
 Delta R.T. -0.02 min  
 Lab File: VD063761.D  
 Acq: 23 Aug 2019 12:54

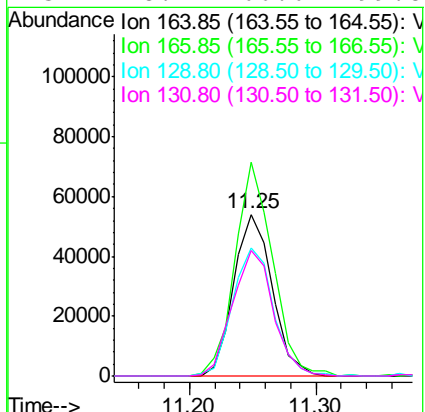
Instrument : MSVOA\_D  
 ClientSampled : TS-1-VSRE

Tgt Ion	Resp	Lower	Upper
117	684442		
82	54.5	42.0	63.0
119	32.5	25.4	38.0

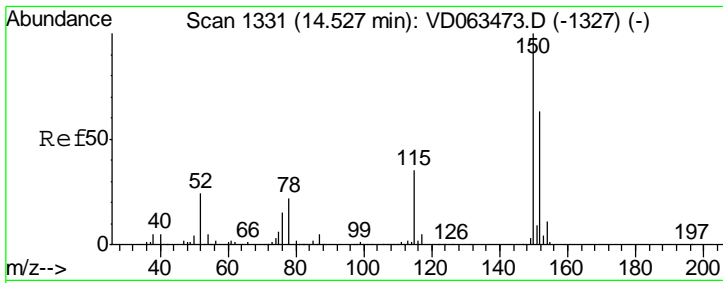


#64  
 Tetrachloroethene  
 Concen: 21.520 ug/l  
 RT: 11.25 min Scan# 998  
 Delta R.T. -0.03 min  
 Lab File: VD063761.D  
 Acq: 23 Aug 2019 12:54

Tgt Ion	Resp	Lower	Upper
164	113703		
166	132.2	108.6	163.0
129	79.5	69.0	103.6
131	78.1	66.6	99.8







#72  
 1,4-Dichlorobenzene-d4  
 Concen: 50.000 ug/l  
 RT: 14.52 min Scan# 1330  
 Delta R.T. -0.01 min  
 Lab File: VD063761.D  
 Acq: 23 Aug 2019 12:54

Instrument : MSVOA\_D  
 ClientSampled : TS-1-VSRE

Tot Ion:152 Resp: 142129

Ion	Ratio	Lower	Upper
152	100		
115	54.7	30.9	92.7
150	150.3	0.0	318.6

