

Data Path : Z:\voasrv\HPCHEM1\MSVOA\_D\Data\VD082523\  
 Data File : VD077030.D  
 Acq On : 25 Aug 2023 22:01  
 Operator : JC/SY  
 Sample : 04172-13MSD  
 Misc : 4.11G/10.0ml/MSVOA\_D/SOIL  
 ALS Vial : 17 Sample Multiplier: 1

Instrument :  
 MSVOA\_D  
 ClientSampleId :

Quant Time: Aug 25 23:58:39 2023  
 Quant Method : Z:\voasrv\HPCHEM1\MSVOA\_D\Method\SFAMDLM080323SMA.M  
 Quant Title : SFAM01.0  
 QLast Update : Fri Aug 25 23:54:22 2023  
 Response via : Initial Calibration

| Compound                      | R.T.   | QIon           | Response   | Conc     | Units  | Dev(Min) |
|-------------------------------|--------|----------------|------------|----------|--------|----------|
| Internal Standards            |        |                |            |          |        |          |
| 1) 1,4-Difluorobenzene        | 8.775  | 114            | 236998     | 25.000   | ug/L   | 0.00     |
| 28) Chlorobenzene-d5          | 11.581 | 117            | 243145     | 25.000   | ug/L   | 0.00     |
| 58) 1,4-Dichlorobenzene-d4    | 13.516 | 152            | 136072     | 25.000   | ug/L   | 0.00     |
| System Monitoring Compounds   |        |                |            |          |        |          |
| 4) Vinyl Chloride-d3          | 2.269  | 65             | 121202     | 18.596   | ug/L   | 0.00     |
| Spiked Amount                 | 25.000 | Range 30 - 150 | Recovery = | 74.400%  |        |          |
| 7) Chloroethane-d5            | 2.793  | 69             | 129184     | 21.440   | ug/L   | 0.00     |
| Spiked Amount                 | 25.000 | Range 30 - 150 | Recovery = | 85.760%  |        |          |
| 11) 1,1-Dichloroethene-d2     | 3.911  | 65             | 29954      | 19.396   | ug/L   | 0.00     |
| Spiked Amount                 | 25.000 | Range 45 - 110 | Recovery = | 77.600%  |        |          |
| 21) 2-Butanone-d5             | 6.987  | 46             | 53684      | 51.303   | ug/L   | 0.00     |
| Spiked Amount                 | 50.000 | Range 20 - 135 | Recovery = | 102.600% |        |          |
| 24) Chloroform-d              | 7.569  | 84             | 215688     | 27.948   | ug/L   | 0.00     |
| Spiked Amount                 | 25.000 | Range 40 - 150 | Recovery = | 111.800% |        |          |
| 26) 1,2-Dichloroethane-d4     | 8.228  | 65             | 106663     | 27.725   | ug/L   | 0.00     |
| Spiked Amount                 | 25.000 | Range 70 - 130 | Recovery = | 110.920% |        |          |
| 32) Benzene-d6                | 8.199  | 84             | 387521     | 25.349   | ug/L   | 0.00     |
| Spiked Amount                 | 25.000 | Range 20 - 135 | Recovery = | 101.400% |        |          |
| 36) 1,2-Dichloropropane-d6    | 9.210  | 67             | 124618     | 26.513   | ug/L   | 0.00     |
| Spiked Amount                 | 25.000 | Range 70 - 120 | Recovery = | 106.040% |        |          |
| 41) Toluene-d8                | 10.269 | 98             | 362816     | 25.886   | ug/L   | 0.00     |
| Spiked Amount                 | 25.000 | Range 30 - 130 | Recovery = | 103.560% |        |          |
| 43) trans-1,3-Dichloroprop... | 10.522 | 79             | 52804      | 24.849   | ug/L   | 0.00     |
| Spiked Amount                 | 25.000 | Range 30 - 135 | Recovery = | 99.400%  |        |          |
| 47) 2-Hexanone-d5             | 10.881 | 63             | 48563      | 54.089   | ug/L   | 0.00     |
| Spiked Amount                 | 50.000 | Range 20 - 135 | Recovery = | 108.180% |        |          |
| 56) 1,1,2,2-Tetrachloroeth... | 12.651 | 84             | 128066     | 28.197   | ug/L   | 0.00     |
| Spiked Amount                 | 25.000 | Range 45 - 120 | Recovery = | 112.800% |        |          |
| 66) 1,2-Dichlorobenzene-d4    | 13.816 | 152            | 146203     | 29.389   | ug/L   | 0.00     |
| Spiked Amount                 | 25.000 | Range 75 - 120 | Recovery = | 117.560% |        |          |
| Target Compounds              |        |                |            |          |        |          |
| 2) Dichlorodifluoromethane    | 1.934  | 85             | 83936      | 21.367   | ug/L   | 100      |
| 3) Chloromethane              | 2.146  | 50             | 150934     | 29.616   | ug/L   | 100      |
| 5) Vinyl chloride             | 2.275  | 62             | 171864     | 23.582   | ug/L   | 90       |
| 6) Bromomethane               | 2.687  | 94             | 116431     | 21.402   | ug/L   | 97       |
| 8) Chloroethane               | 2.828  | 64             | 119057     | 24.267   | ug/L   | 98       |
| 9) Trichlorofluoromethane     | 3.169  | 101            | 143168     | 23.726   | ug/L   | 98       |
| 10) 1,1,2-Trichloro-1,2,2-... | 3.958  | 101            | 92383      | 23.496   | ug/L   | 98       |
| 12) 1,1-Dichloroethene        | 3.934  | 96             | 83585      | 23.974   | ug/L   | 82       |
| 13) Acetone                   | 4.016  | 43             | 42466      | 39.687   | ug/L   | 97       |
| 14) Carbon disulfide          | 4.263  | 76             | 282687     | 23.361   | ug/L   | 99       |
| 15) Methyl Acetate            | 4.558  | 43             | 36915      | 20.411   | ug/L # | 85       |
| 16) Methylene chloride        | 4.793  | 84             | 134115     | 26.977   | ug/L # | 72       |
| 17) trans-1,2-Dichloroethene  | 5.310  | 96             | 96087      | 24.340   | ug/L   | 87       |
| 18) Methyl tert-butyl Ether   | 5.310  | 73             | 214785     | 24.627   | ug/L # | 94       |
| 19) 1,1-Dichloroethane        | 6.105  | 63             | 166182     | 25.212   | ug/L   | 91       |
| 20) cis-1,2-Dichloroethene    | 7.075  | 96             | 112933     | 25.627   | ug/L   | 90       |
| 22) 2-Butanone                | 7.087  | 43             | 54632      | 36.492   | ug/L   | 79       |
| 23) Bromochloromethane        | 7.428  | 128            | 52884      | 24.742   | ug/L # | 75       |
| 25) Chloroform                | 7.599  | 83             | 187982     | 26.040   | ug/L   | 96       |

Data Path : Z:\voasrv\HPCHEM1\MSVOA\_D\Data\VD082523\  
 Data File : VD077030.D  
 Acq On : 25 Aug 2023 22:01  
 Operator : JC/SY  
 Sample : 04172-13MSD  
 Misc : 4.11G/10.0ml/MSVOA\_D/SOIL  
 ALS Vial : 17 Sample Multiplier: 1

Instrument :  
 MSVOA\_D  
 ClientSampleId :

Quant Time: Aug 25 23:58:39 2023  
 Quant Method : Z:\voasrv\HPCHEM1\MSVOA\_D\Method\SFAMDLM080323SMA.M  
 Quant Title : SFAM01.0  
 QLast Update : Fri Aug 25 23:54:22 2023  
 Response via : Initial Calibration

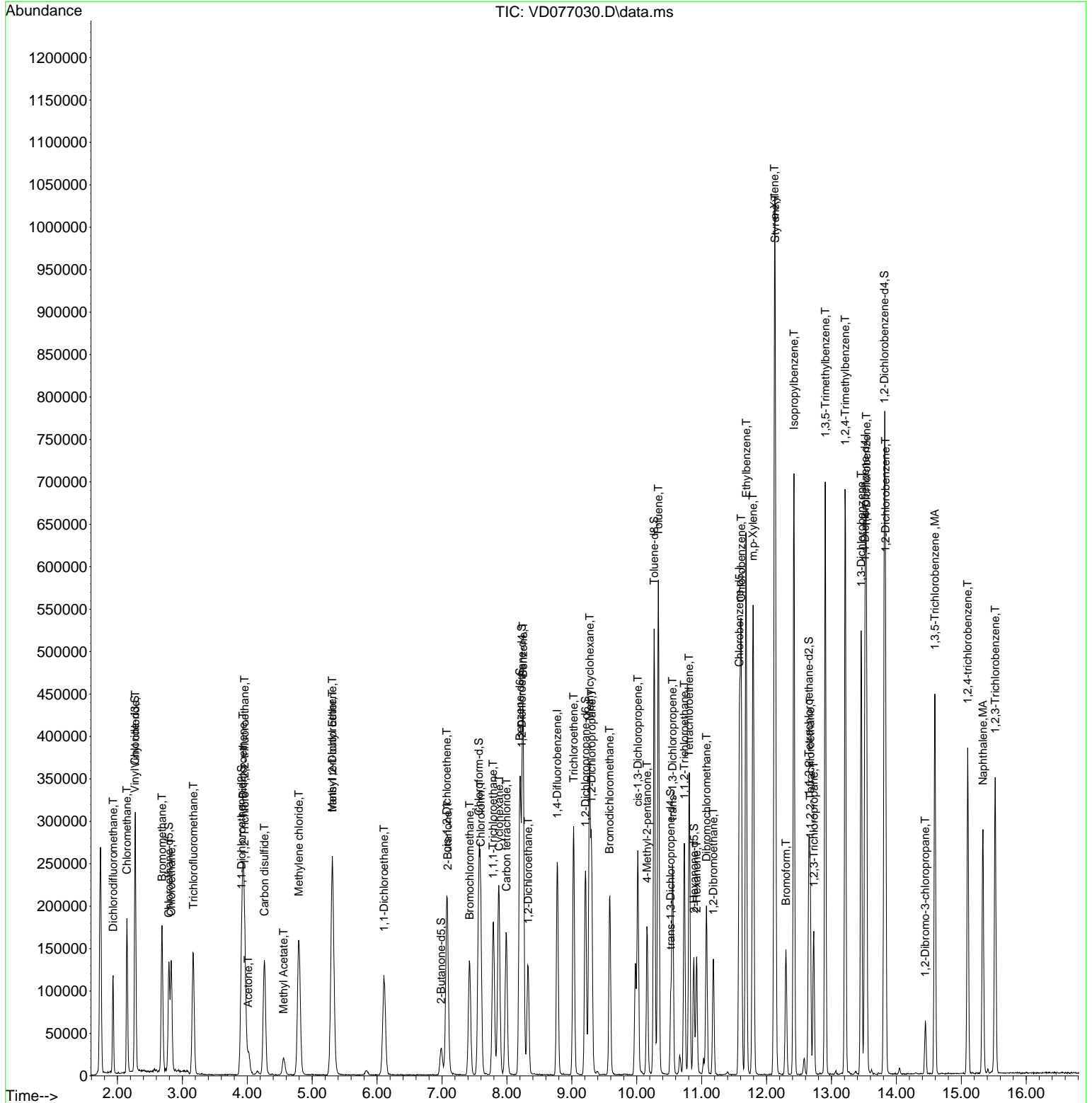
| Compound                      | R.T.   | QIon | Response | Conc   | Units  | Dev(Min) |
|-------------------------------|--------|------|----------|--------|--------|----------|
| 27) 1,2-Dichloroethane        | 8.328  | 62   | 111749   | 24.699 | ug/L   | 100      |
| 29) Cyclohexane               | 7.881  | 56   | 116683   | 21.800 | ug/L # | 80       |
| 30) 1,1,1-Trichloroethane     | 7.787  | 97   | 152346   | 25.287 | ug/L   | 95       |
| 31) Carbon tetrachloride      | 7.993  | 117  | 125297   | 25.412 | ug/L   | 98       |
| 33) Benzene                   | 8.251  | 78   | 408375   | 25.623 | ug/L   | 100      |
| 34) Trichloroethene           | 9.028  | 95   | 100041   | 24.103 | ug/L   | 98       |
| 35) Methylcyclohexane         | 9.275  | 83   | 157046   | 23.202 | ug/L   | 89       |
| 37) 1,2-Dichloropropane       | 9.304  | 63   | 102646   | 25.353 | ug/L # | 96       |
| 38) Bromodichloromethane      | 9.581  | 83   | 142777   | 25.609 | ug/L   | 97       |
| 39) cis-1,3-Dichloropropene   | 10.016 | 75   | 162589   | 24.883 | ug/L   | 100      |
| 40) 4-Methyl-2-pentanone      | 10.157 | 43   | 107727   | 42.231 | ug/L # | 90       |
| 42) Toluene                   | 10.334 | 91   | 444506   | 25.649 | ug/L   | 97       |
| 44) trans-1,3-Dichloropropene | 10.551 | 75   | 138606   | 24.272 | ug/L   | 99       |
| 45) 1,1,2-Trichloroethane     | 10.734 | 97   | 89806    | 24.959 | ug/L   | 96       |
| 46) Tetrachloroethene         | 10.804 | 164  | 79899    | 25.542 | ug/L   | 86       |
| 48) 2-Hexanone                | 10.922 | 43   | 78919    | 40.230 | ug/L # | 88       |
| 49) Dibromochloromethane      | 11.075 | 129  | 104832   | 26.189 | ug/L   | 96       |
| 50) 1,2-Dibromoethane         | 11.181 | 107  | 87667    | 24.981 | ug/L   | 86       |
| 51) Chlorobenzene             | 11.610 | 112  | 296827   | 26.288 | ug/L   | 97       |
| 52) Ethylbenzene              | 11.687 | 91   | 476578   | 25.807 | ug/L   | 99       |
| 53) m,p-Xylene                | 11.792 | 106  | 184723   | 25.924 | ug/L   | 98       |
| 54) o-Xylene                  | 12.122 | 106  | 183388   | 26.759 | ug/L   | 99       |
| 55) Styrene                   | 12.134 | 104  | 336870   | 27.186 | ug/L   | 90       |
| 57) 1,1,2,2-Tetrachloroethane | 12.675 | 83   | 104543   | 23.491 | ug/L   | 98       |
| 59) Bromoform                 | 12.298 | 173  | 64713    | 23.980 | ug/L # | 97       |
| 60) Isopropylbenzene          | 12.422 | 105  | 469518   | 23.992 | ug/L   | 99       |
| 61) 1,2,3-Trichloropropane    | 12.728 | 75   | 67805    | 21.351 | ug/L   | 97       |
| 62) 1,3,5-Trimethylbenzene    | 12.904 | 105  | 367495   | 24.651 | ug/L   | 98       |
| 63) 1,2,4-Trimethylbenzene    | 13.210 | 105  | 374866   | 25.267 | ug/L   | 100      |
| 64) 1,3-Dichlorobenzene       | 13.457 | 146  | 225941   | 25.298 | ug/L   | 98       |
| 65) 1,4-Dichlorobenzene       | 13.539 | 146  | 236415   | 25.609 | ug/L   | 98       |
| 67) 1,2-Dichlorobenzene       | 13.834 | 146  | 210921   | 25.192 | ug/L   | 97       |
| 68) 1,2-Dibromo-3-chloropr... | 14.445 | 75   | 14287    | 19.634 | ug/L # | 81       |
| 69) 1,3,5-Trichlorobenzene    | 14.592 | 180  | 144327   | 25.823 | ug/L   | 99       |
| 70) 1,2,4-trichlorobenzene    | 15.098 | 180  | 121570   | 24.727 | ug/L   | 99       |
| 71) Naphthalene               | 15.333 | 128  | 260216   | 22.510 | ug/L   | 99       |
| 72) 1,2,3-Trichlorobenzene    | 15.522 | 180  | 118878   | 26.662 | ug/L   | 99       |

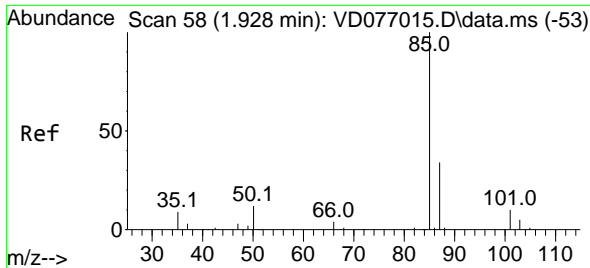
(#) = qualifier out of range (m) = manual integration (+) = signals summed

Data Path : Z:\voasrv\HPCHEM1\MSVOA\_D\Data\VD082523\  
 Data File : VD077030.D  
 Acq On : 25 Aug 2023 22:01  
 Operator : JC/SY  
 Sample : 04172-13MSD  
 Misc : 4.11G/10.0ml/MSVOA\_D/SOIL  
 ALS Vial : 17 Sample Multiplier: 1

Instrument :  
 MSVOA\_D  
 ClientSampleId :

Quant Time: Aug 25 23:58:39 2023  
 Quant Method : Z:\voasrv\HPCHEM1\MSVOA\_D\Method\SFAMDLM080323SMA.M  
 Quant Title : SFAM01.0  
 QLast Update : Fri Aug 25 23:54:22 2023  
 Response via : Initial Calibration

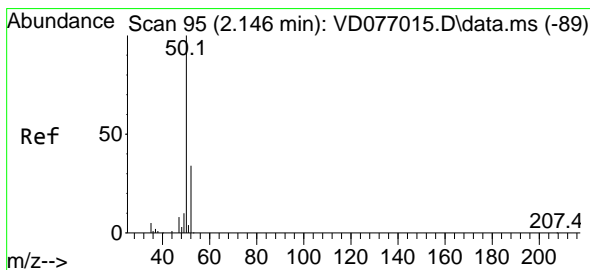
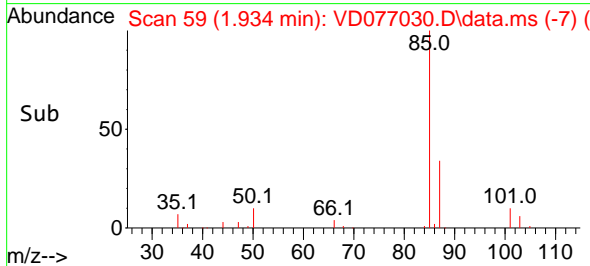
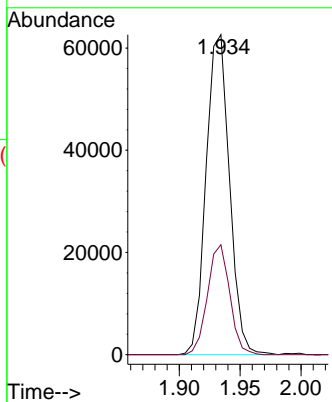
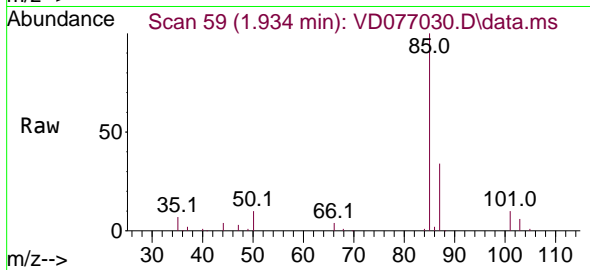




#2  
 Dichlorodifluoromethane  
 Concen: 21.367 ug/L  
 RT: 1.934 min Scan# 51  
 Delta R.T. 0.006 min  
 Lab File: VD077030.D  
 Acq: 25 Aug 2023 22:01

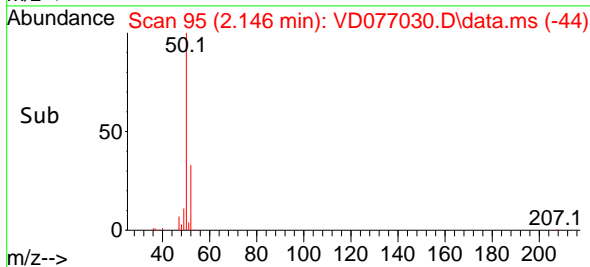
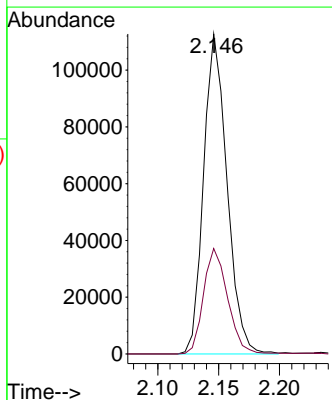
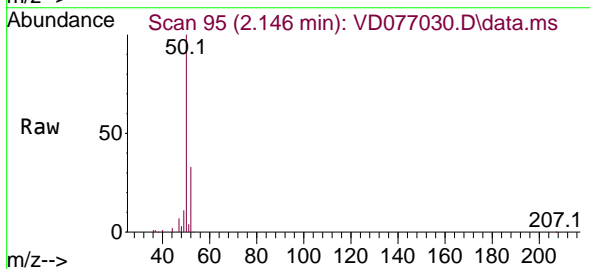
Instrument :  
 MSVOA\_D  
 ClientSampleId :

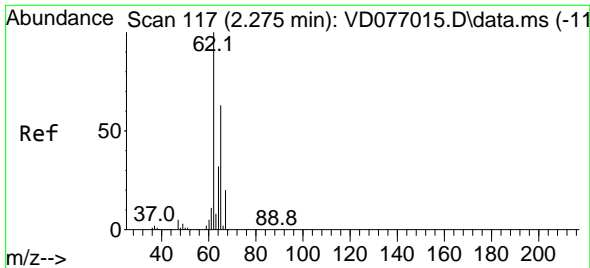
Tgt Ion: 85 Resp: 83936  
 Ion Ratio Lower Upper  
 85 100  
 87 32.6 26.3 39.5



#3  
 Chloromethane  
 Concen: 29.616 ug/L  
 RT: 2.146 min Scan# 95  
 Delta R.T. 0.000 min  
 Lab File: VD077030.D  
 Acq: 25 Aug 2023 22:01

Tgt Ion: 50 Resp: 150934  
 Ion Ratio Lower Upper  
 50 100  
 52 32.9 23.2 43.2

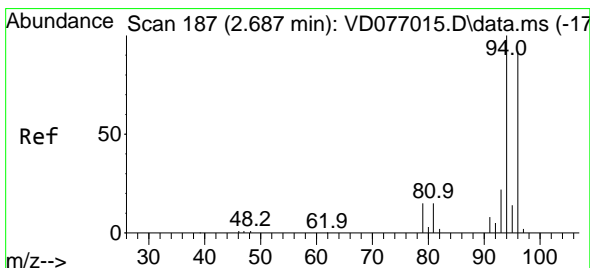
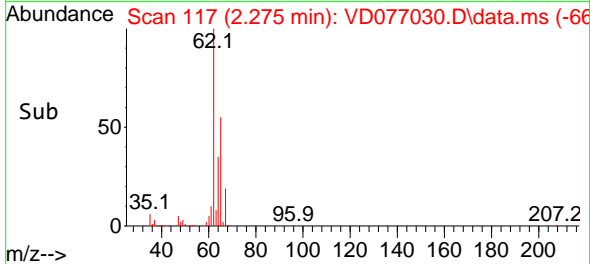
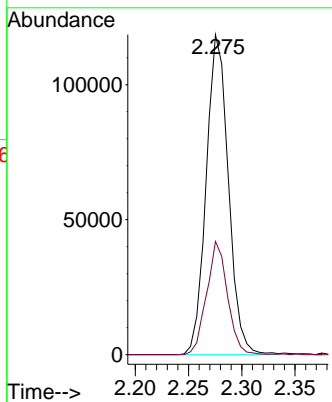
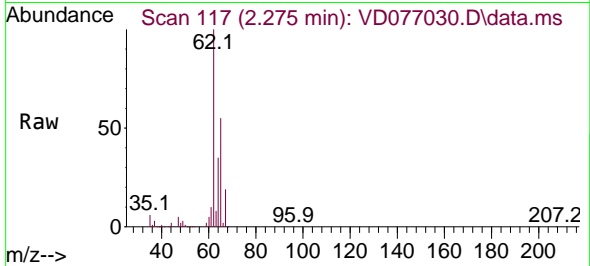




#5  
 Vinyl chloride  
 Concen: 23.582 ug/L  
 RT: 2.275 min Scan# 117  
 Delta R.T. 0.000 min  
 Lab File: VD077030.D  
 Acq: 25 Aug 2023 22:01

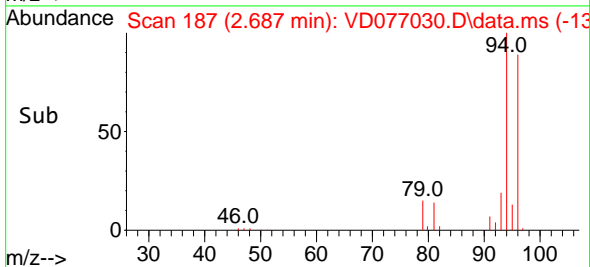
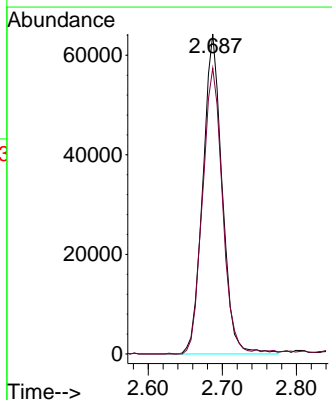
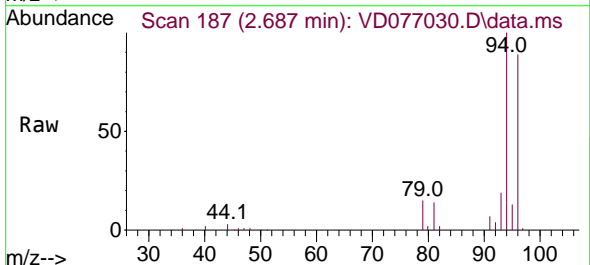
Instrument :  
 MSVOA\_D  
 ClientSampleId :

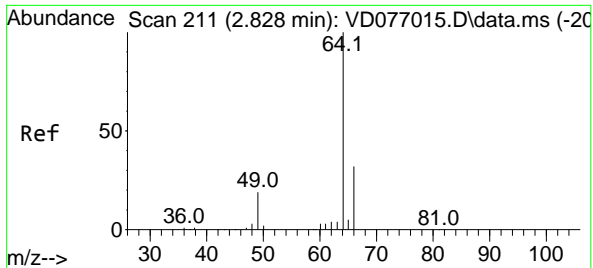
Tgt Ion: 62 Resp: 171864  
 Ion Ratio Lower Upper  
 62 100  
 64 35.4 21.1 39.1



#6  
 Bromomethane  
 Concen: 21.402 ug/L  
 RT: 2.687 min Scan# 187  
 Delta R.T. 0.000 min  
 Lab File: VD077030.D  
 Acq: 25 Aug 2023 22:01

Tgt Ion: 94 Resp: 116431  
 Ion Ratio Lower Upper  
 94 100  
 96 89.4 64.7 120.1

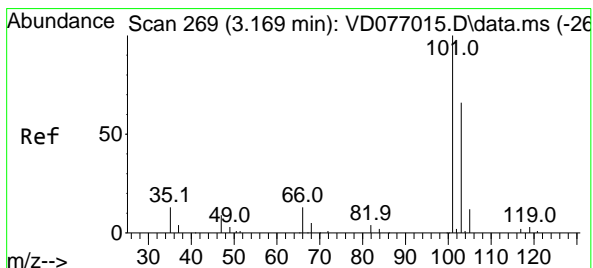
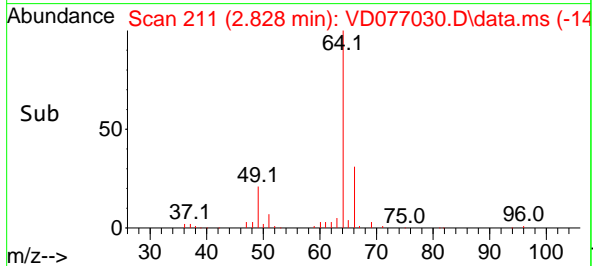
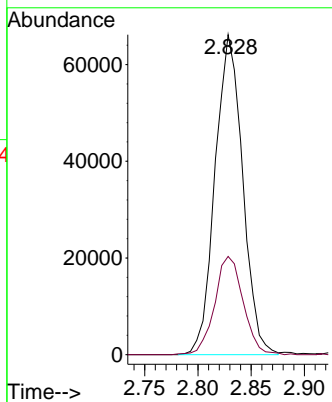
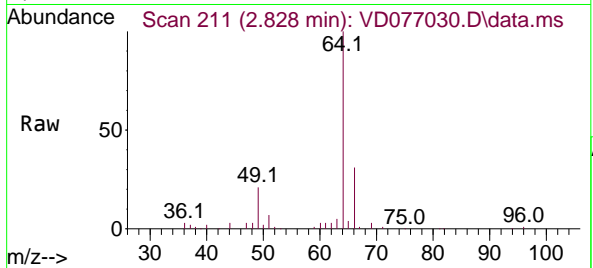




#8  
 Chloroethane  
 Concen: 24.267 ug/L  
 RT: 2.828 min Scan# 211  
 Delta R.T. 0.000 min  
 Lab File: VD077030.D  
 Acq: 25 Aug 2023 22:01

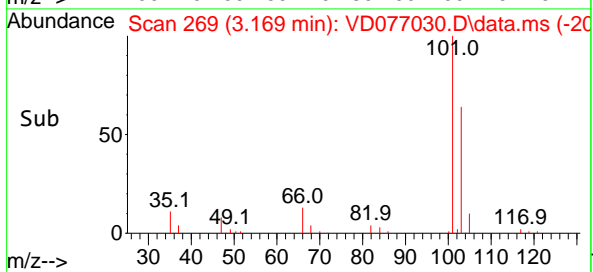
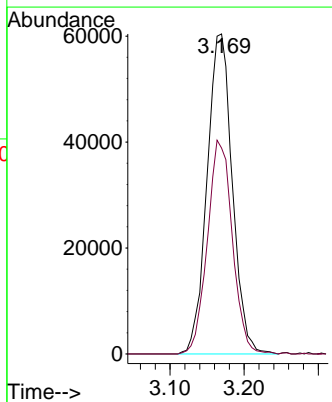
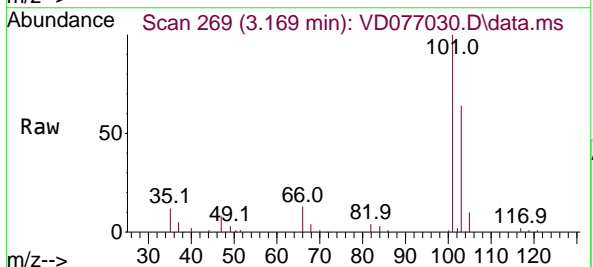
Instrument : MSVOA\_D  
 ClientSampleId :

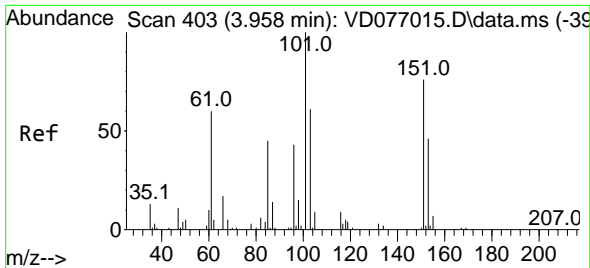
Tgt Ion: 64 Resp: 119057  
 Ion Ratio Lower Upper  
 64 100  
 66 30.7 22.1 41.1



#9  
 Trichlorofluoromethane  
 Concen: 23.726 ug/L  
 RT: 3.169 min Scan# 269  
 Delta R.T. 0.000 min  
 Lab File: VD077030.D  
 Acq: 25 Aug 2023 22:01

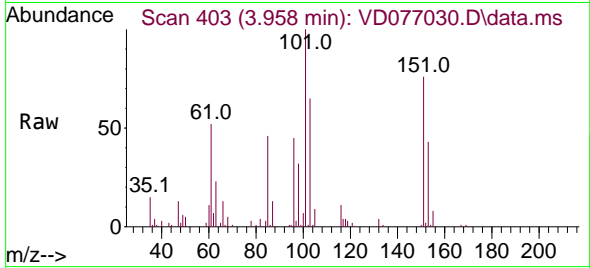
Tgt Ion:101 Resp: 143168  
 Ion Ratio Lower Upper  
 101 100  
 103 66.0 51.8 77.6



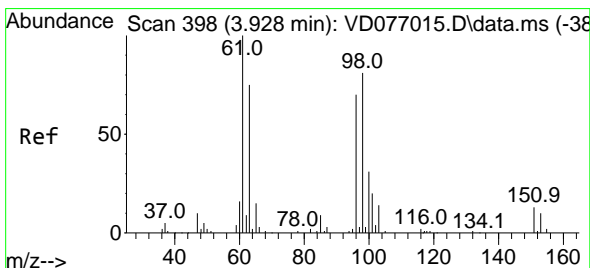
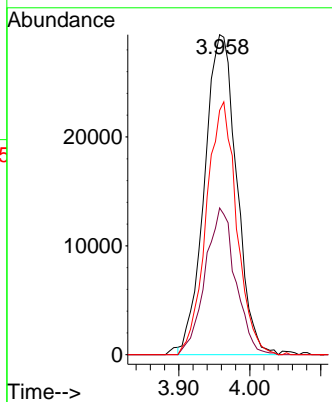
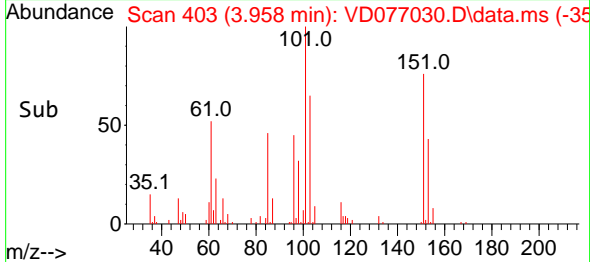


#10  
 1,1,2-Trichloro-1,2,2-trifluoroethane  
 Concen: 23.496 ug/L  
 RT: 3.958 min Scan# 40  
 Delta R.T. 0.000 min  
 Lab File: VD077030.D  
 Acq: 25 Aug 2023 22:01

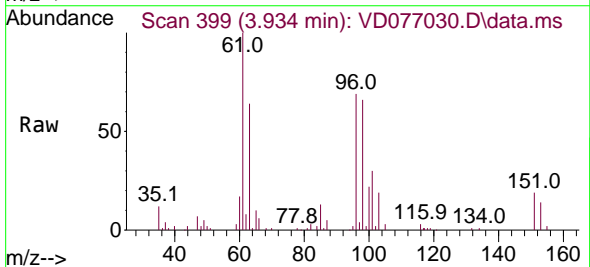
Instrument :  
 MSVOA\_D  
 ClientSampleId :



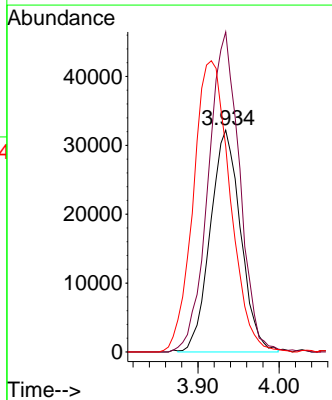
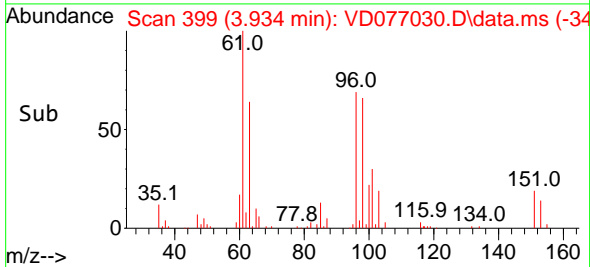
Tgt Ion:101 Resp: 92383  
 Ion Ratio Lower Upper  
 101 100  
 85 43.3 35.5 53.3  
 151 74.7 58.6 87.8

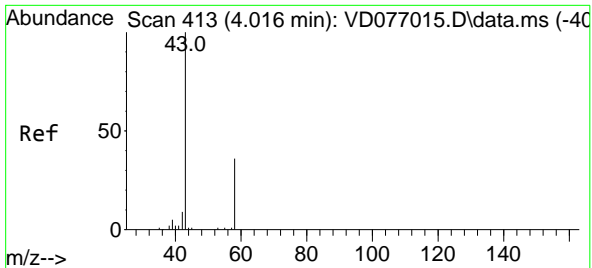


#12  
 1,1-Dichloroethene  
 Concen: 23.974 ug/L  
 RT: 3.934 min Scan# 399  
 Delta R.T. 0.006 min  
 Lab File: VD077030.D  
 Acq: 25 Aug 2023 22:01



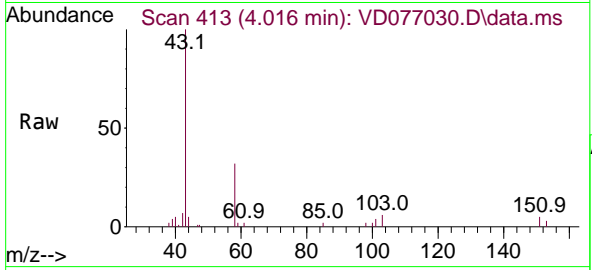
Tgt Ion: 96 Resp: 83585  
 Ion Ratio Lower Upper  
 96 100  
 61 144.3 113.0 209.8  
 63 92.8 83.6 155.2



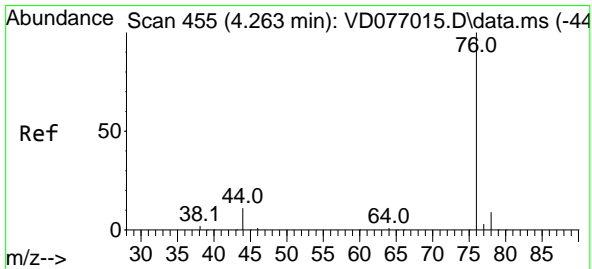
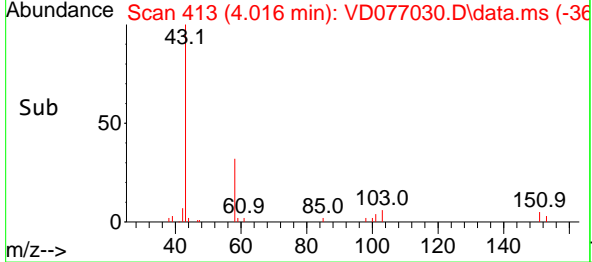
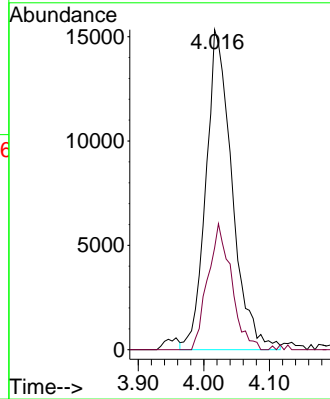


#13  
 Acetone  
 Concen: 39.687 ug/L  
 RT: 4.016 min Scan# 413  
 Delta R.T. 0.000 min  
 Lab File: VD077030.D  
 Acq: 25 Aug 2023 22:01

Instrument :  
 MSVOA\_D  
 ClientSampleId :

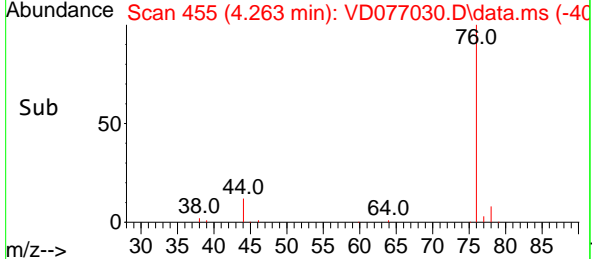
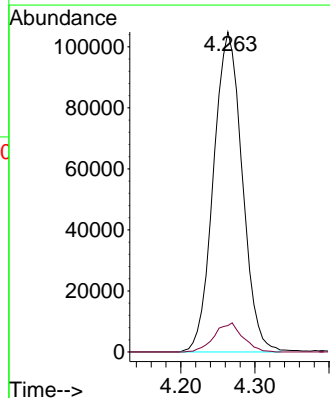
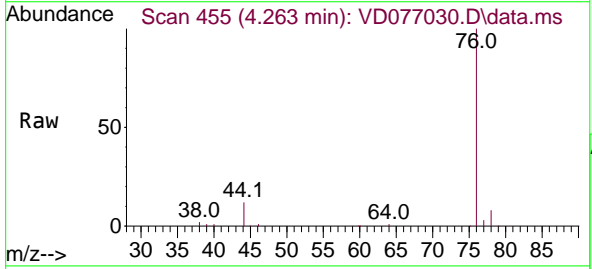


Tgt Ion: 43 Resp: 42466  
 Ion Ratio Lower Upper  
 43 100  
 58 35.4 0.0 67.4

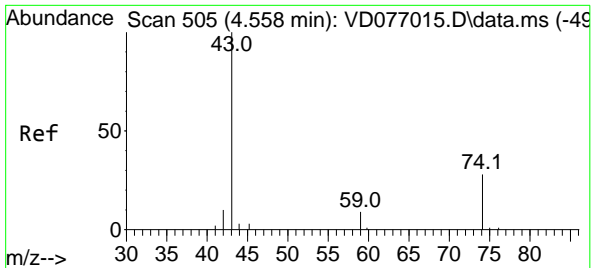


#14  
 Carbon disulfide  
 Concen: 23.361 ug/L  
 RT: 4.263 min Scan# 455  
 Delta R.T. 0.000 min  
 Lab File: VD077030.D  
 Acq: 25 Aug 2023 22:01

Tgt Ion: 76 Resp: 282687  
 Ion Ratio Lower Upper  
 76 100  
 78 8.3 7.0 10.4

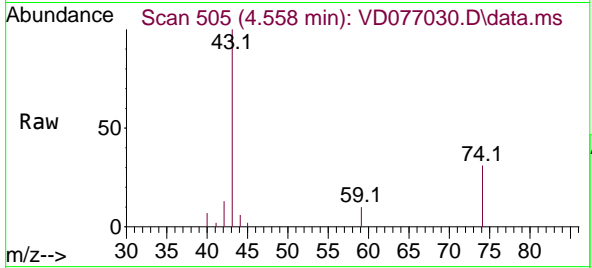




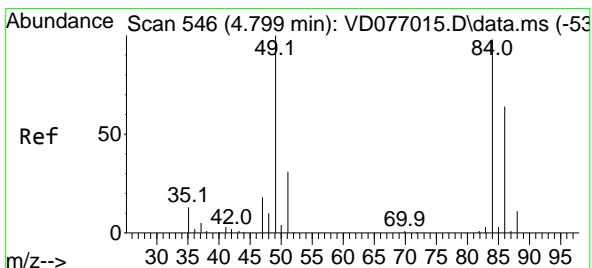
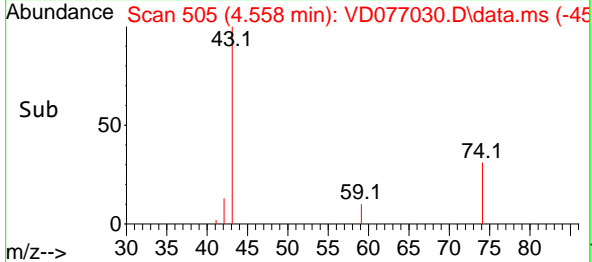
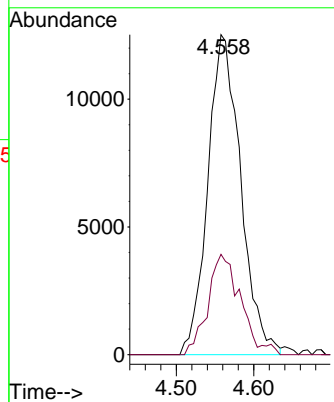


#15  
 Methyl Acetate  
 Concen: 20.411 ug/L  
 RT: 4.558 min Scan# 505  
 Delta R.T. 0.000 min  
 Lab File: VD077030.D  
 Acq: 25 Aug 2023 22:01

Instrument :  
 MSVOA\_D  
 ClientSampleId :

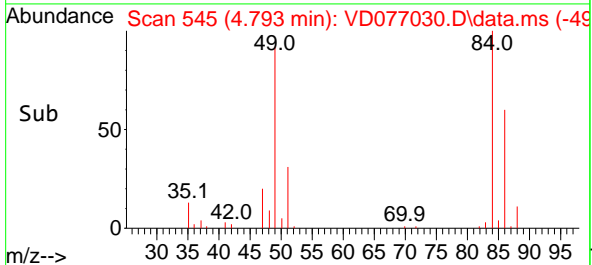
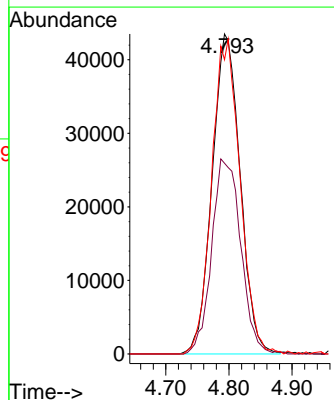
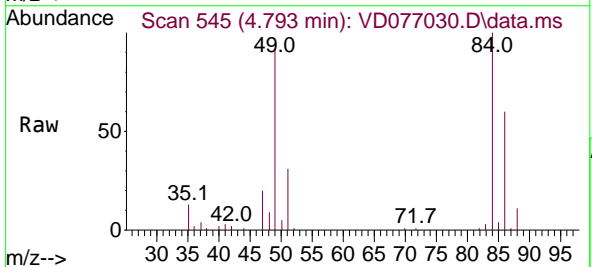


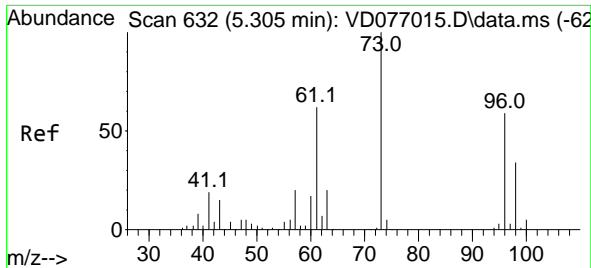
Tgt Ion: 43 Resp: 36915  
 Ion Ratio Lower Upper  
 43 100  
 74 30.0 18.2 27.2#



#16  
 Methylene chloride  
 Concen: 26.977 ug/L  
 RT: 4.793 min Scan# 545  
 Delta R.T. -0.006 min  
 Lab File: VD077030.D  
 Acq: 25 Aug 2023 22:01

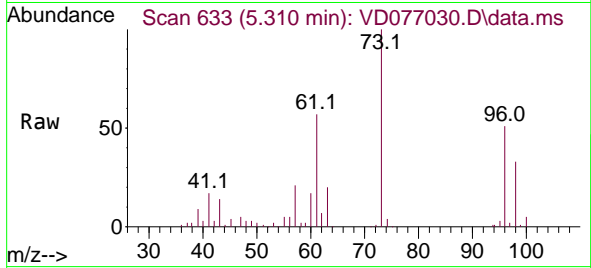
Tgt Ion: 84 Resp: 134115  
 Ion Ratio Lower Upper  
 84 100  
 86 59.6 45.1 83.9  
 49 91.9 97.2 180.6#



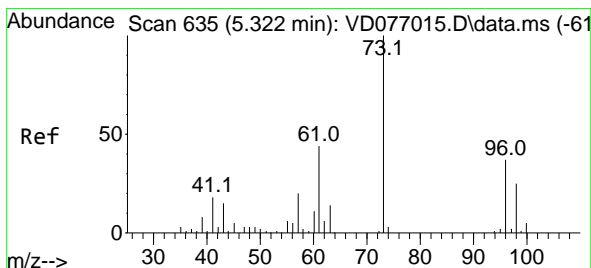
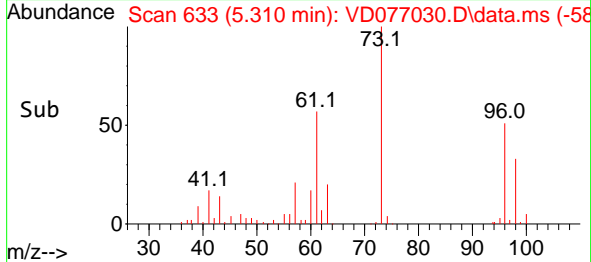
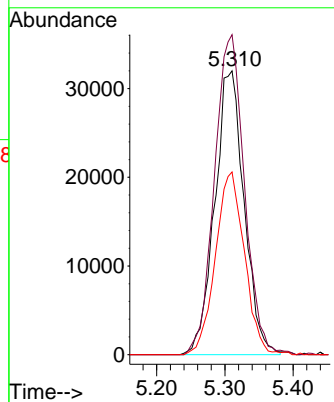


#17  
 trans-1,2-Dichloroethene  
 Concen: 24.340 ug/L  
 RT: 5.310 min Scan# 617  
 Delta R.T. 0.006 min  
 Lab File: VD077030.D  
 Acq: 25 Aug 2023 22:01

Instrument : MSVOA\_D  
 ClientSampleId :

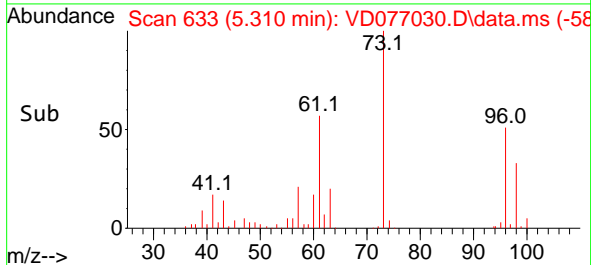
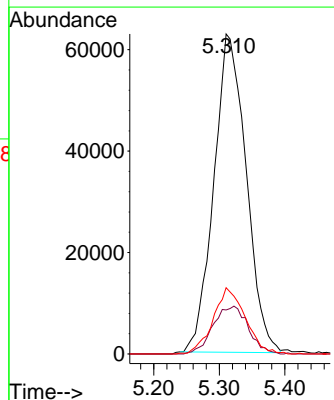
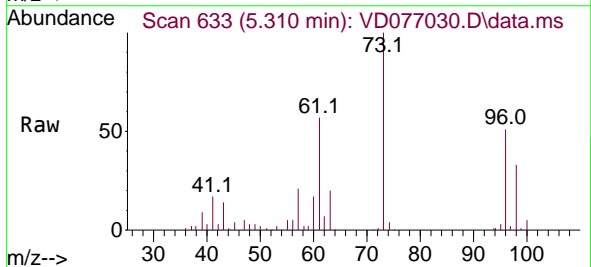


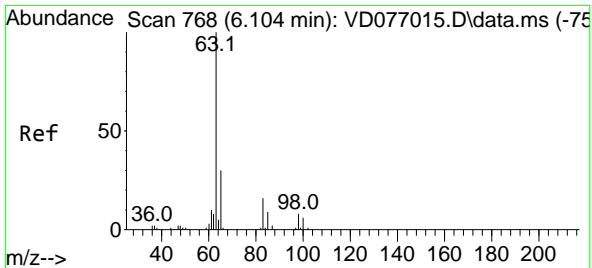
Tgt Ion: 96 Resp: 96087  
 Ion Ratio Lower Upper  
 96 100  
 61 112.8 94.5 175.5  
 98 64.4 46.0 85.4



#18  
 Methyl tert-butyl Ether  
 Concen: 24.627 ug/L  
 RT: 5.310 min Scan# 633  
 Delta R.T. -0.012 min  
 Lab File: VD077030.D  
 Acq: 25 Aug 2023 22:01

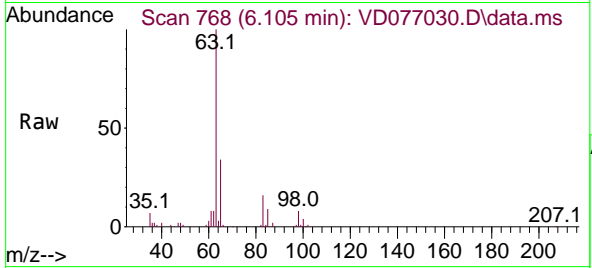
Tgt Ion: 73 Resp: 214785  
 Ion Ratio Lower Upper  
 73 100  
 43 7.2 7.2 10.8#  
 57 20.2 18.6 28.0





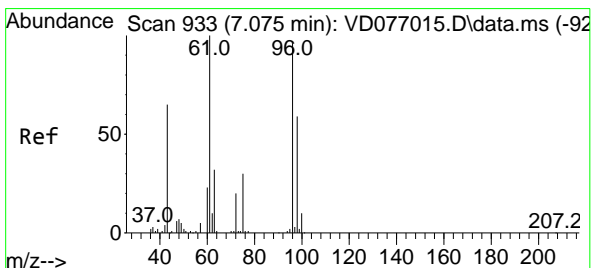
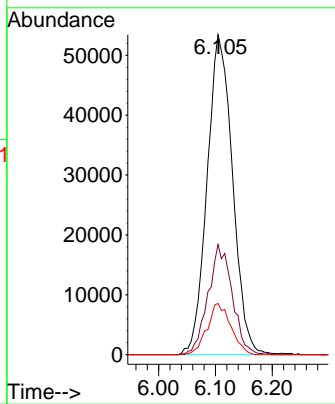
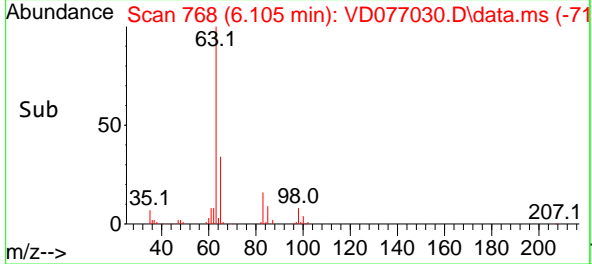
#19  
 1,1-Dichloroethane  
 Concen: 25.212 ug/L  
 RT: 6.105 min Scan# 701  
 Delta R.T. 0.000 min  
 Lab File: VD077030.D  
 Acq: 25 Aug 2023 22:01

Instrument : MSVOA\_D  
 ClientSampleId :

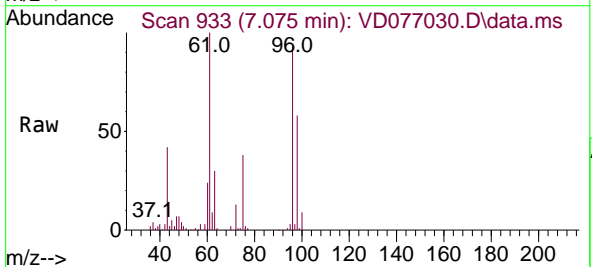


Tgt Ion: 63 Resp: 166182

| Ion | Ratio | Lower | Upper |
|-----|-------|-------|-------|
| 63  | 100   |       |       |
| 65  | 34.4  | 20.8  | 38.6  |
| 83  | 16.0  | 8.9   | 16.5  |

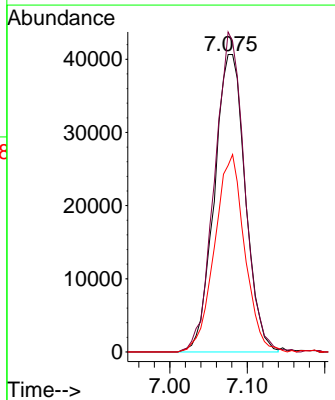
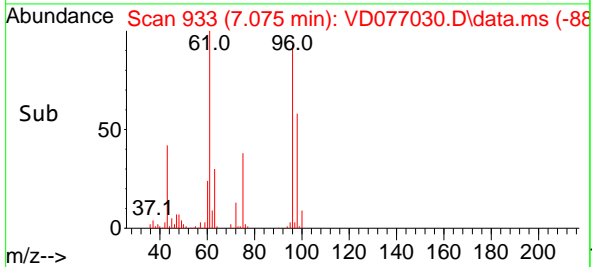


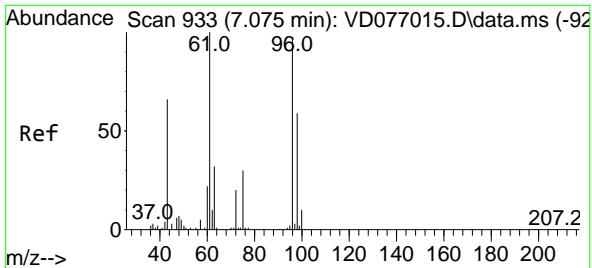
#20  
 cis-1,2-Dichloroethene  
 Concen: 25.627 ug/L  
 RT: 7.075 min Scan# 933  
 Delta R.T. 0.000 min  
 Lab File: VD077030.D  
 Acq: 25 Aug 2023 22:01



Tgt Ion: 96 Resp: 112933

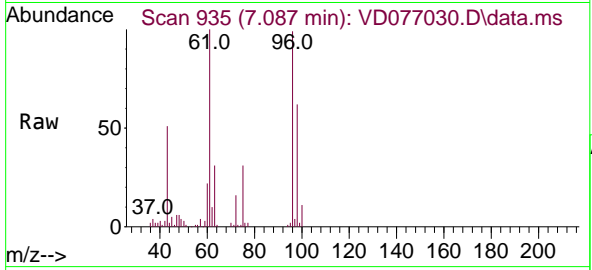
| Ion | Ratio | Lower | Upper |
|-----|-------|-------|-------|
| 96  | 100   |       |       |
| 61  | 107.6 | 86.0  | 159.6 |
| 98  | 62.7  | 42.2  | 78.4  |



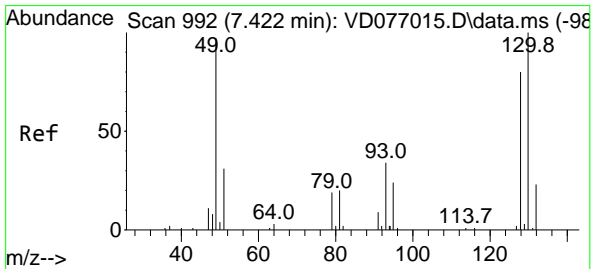
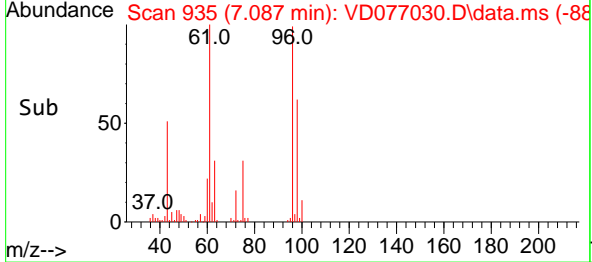
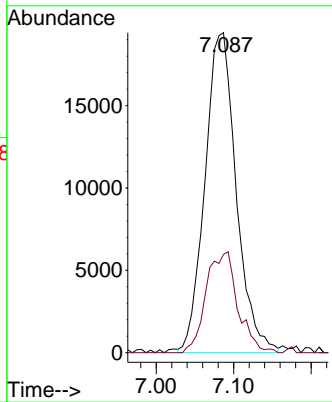


#22  
 2-Butanone  
 Concen: 36.492 ug/L  
 RT: 7.087 min Scan# 911  
 Delta R.T. 0.012 min  
 Lab File: VD077030.D  
 Acq: 25 Aug 2023 22:01

Instrument : MSVOA\_D  
 ClientSampleId :

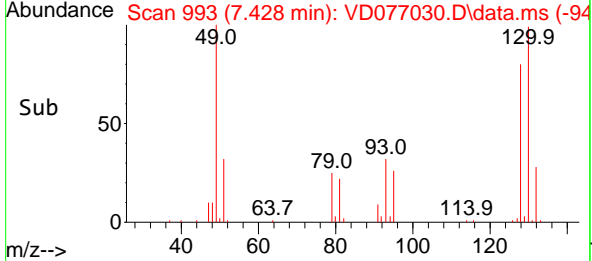
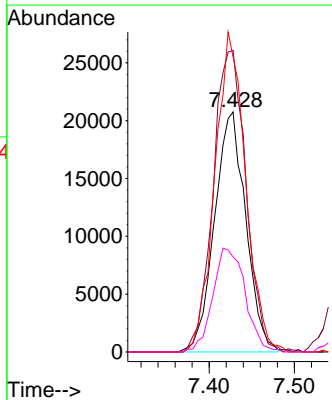
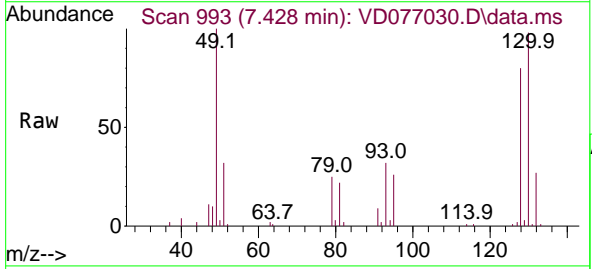


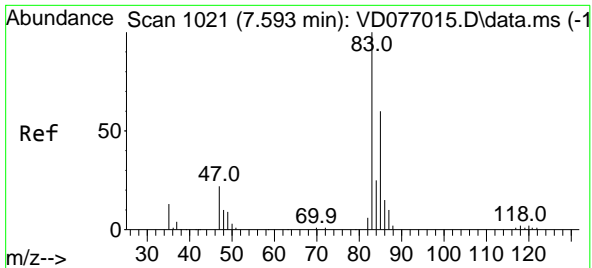
Tgt Ion: 43 Resp: 54632  
 Ion Ratio Lower Upper  
 43 100  
 72 15.2 12.9 38.7



#23  
 Bromochloromethane  
 Concen: 24.742 ug/L  
 RT: 7.428 min Scan# 993  
 Delta R.T. 0.006 min  
 Lab File: VD077030.D  
 Acq: 25 Aug 2023 22:01

Tgt Ion:128 Resp: 52884  
 Ion Ratio Lower Upper  
 128 100  
 49 125.7 124.7 231.7  
 130 122.9 80.0 148.6  
 51 39.6 42.7 64.1#

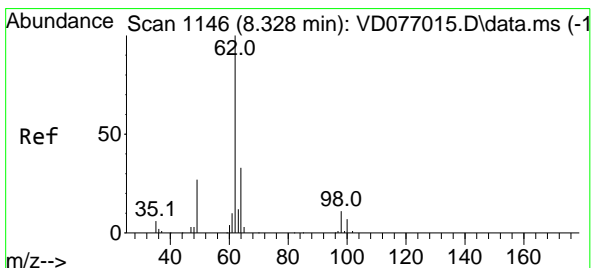
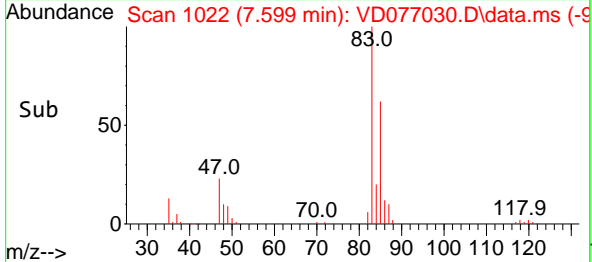
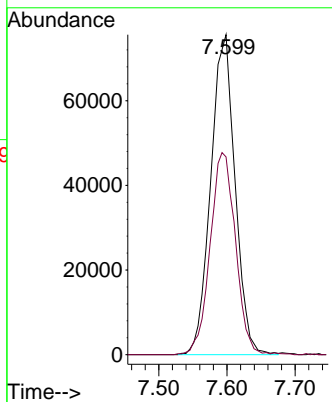
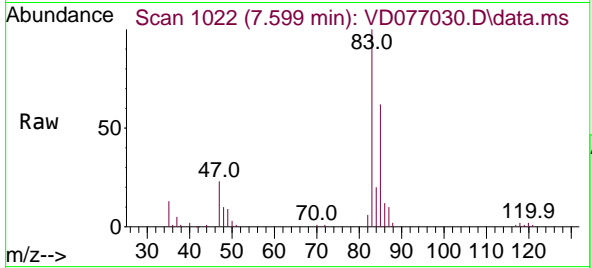




#25  
 Chloroform  
 Concen: 26.040 ug/L  
 RT: 7.599 min Scan# 1022  
 Delta R.T. 0.006 min  
 Lab File: VD077030.D  
 Acq: 25 Aug 2023 22:01

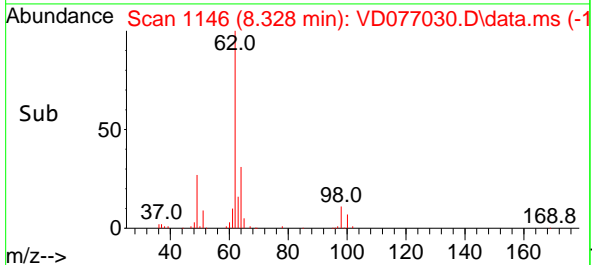
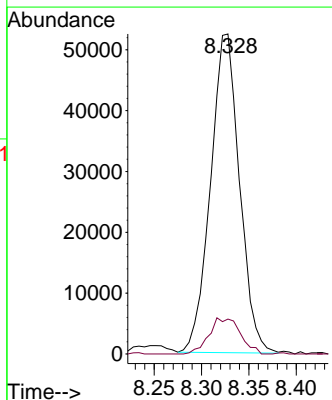
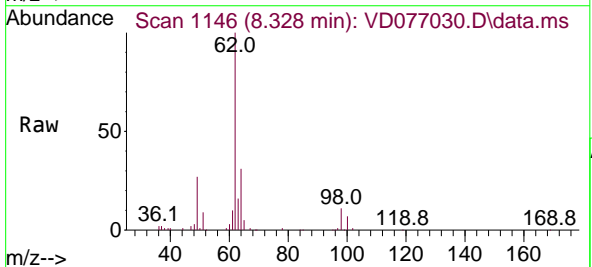
Instrument : MSVOA\_D  
 ClientSampleId :

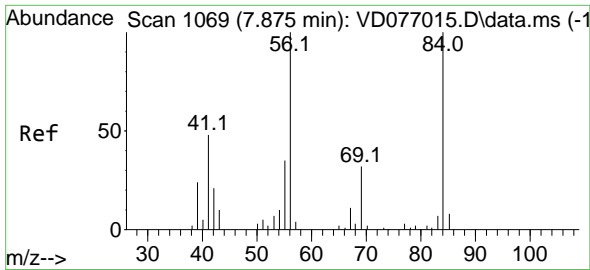
Tgt Ion: 83 Resp: 187982  
 Ion Ratio Lower Upper  
 83 100  
 85 61.8 45.4 84.4



#27  
 1,2-Dichloroethane  
 Concen: 24.699 ug/L  
 RT: 8.328 min Scan# 1146  
 Delta R.T. 0.000 min  
 Lab File: VD077030.D  
 Acq: 25 Aug 2023 22:01

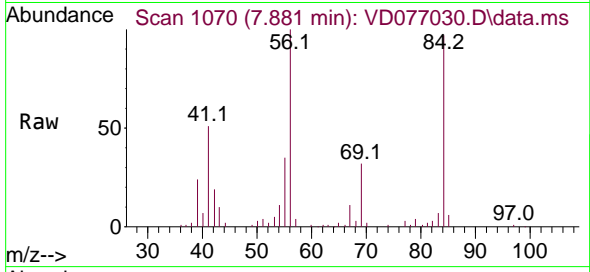
Tgt Ion: 62 Resp: 111749  
 Ion Ratio Lower Upper  
 62 100  
 98 10.9 8.7 13.1



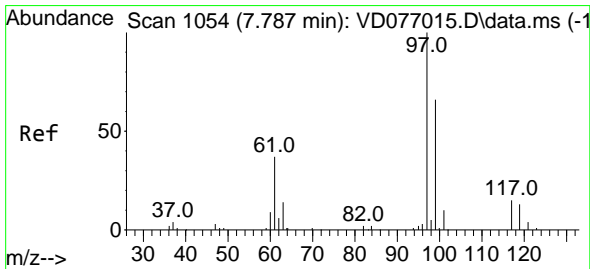
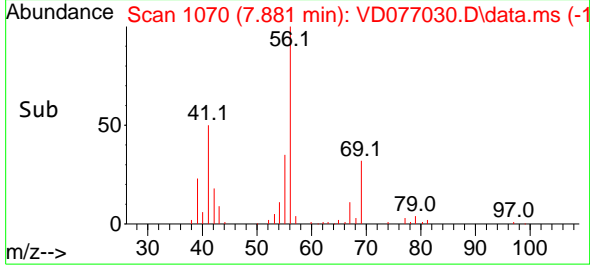
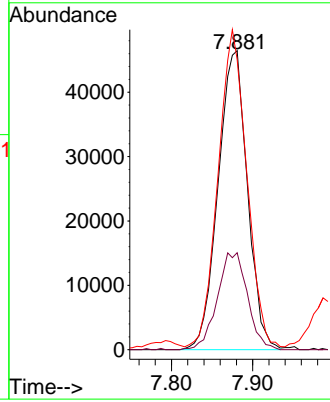


#29  
 Cyclohexane  
 Concen: 21.800 ug/L  
 RT: 7.881 min Scan# 1069  
 Delta R.T. 0.006 min  
 Lab File: VD077030.D  
 Acq: 25 Aug 2023 22:01

Instrument :  
 MSVOA\_D  
 ClientSampleId :

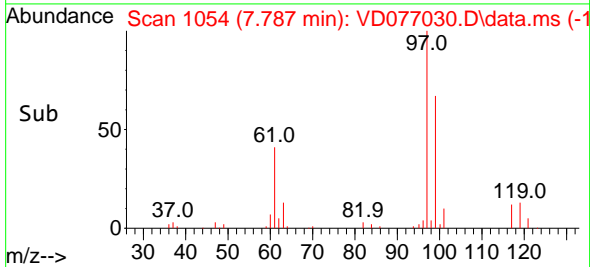
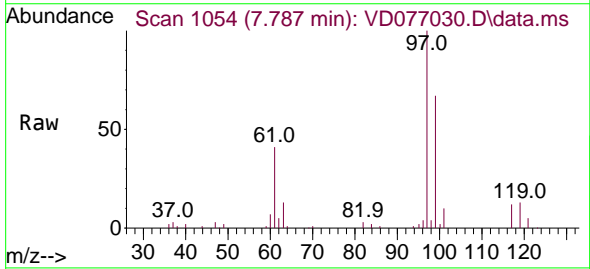
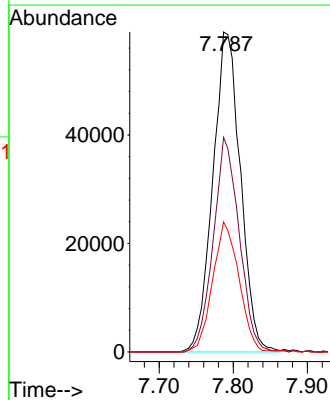


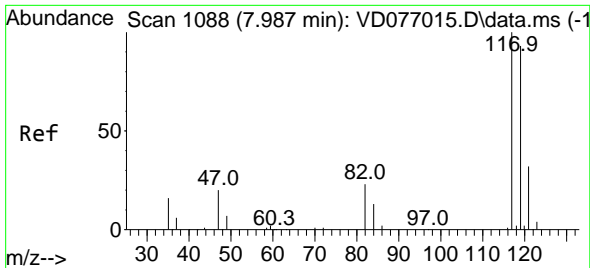
Tgt Ion: 56 Resp: 116683  
 Ion Ratio Lower Upper  
 56 100  
 69 33.3 23.4 35.0  
 84 105.1 66.3 99.5#



#30  
 1,1,1-Trichloroethane  
 Concen: 25.287 ug/L  
 RT: 7.787 min Scan# 1054  
 Delta R.T. 0.000 min  
 Lab File: VD077030.D  
 Acq: 25 Aug 2023 22:01

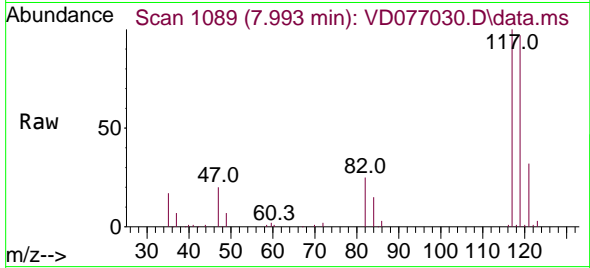
Tgt Ion: 97 Resp: 152346  
 Ion Ratio Lower Upper  
 97 100  
 99 63.0 51.0 76.6  
 61 38.6 36.4 54.6



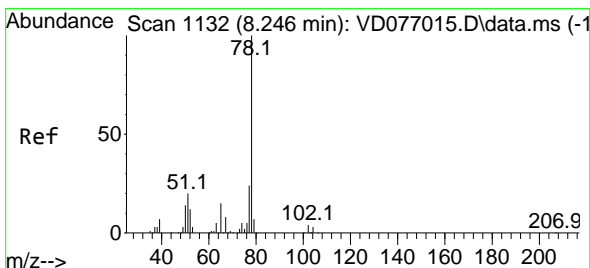
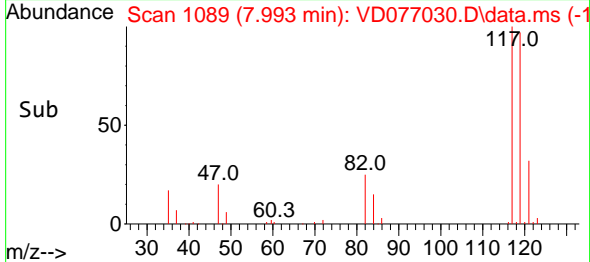
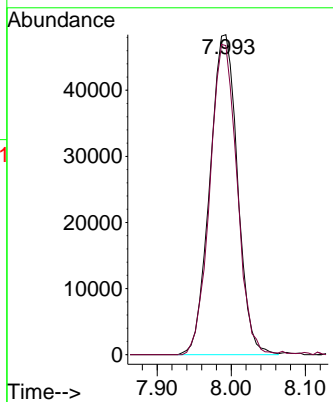


#31  
 Carbon tetrachloride  
 Concen: 25.412 ug/L  
 RT: 7.993 min Scan# 1089  
 Delta R.T. 0.006 min  
 Lab File: VD077030.D  
 Acq: 25 Aug 2023 22:01

Instrument :  
 MSVOA\_D  
 ClientSampleId :

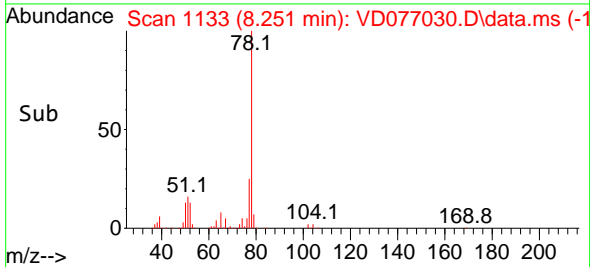
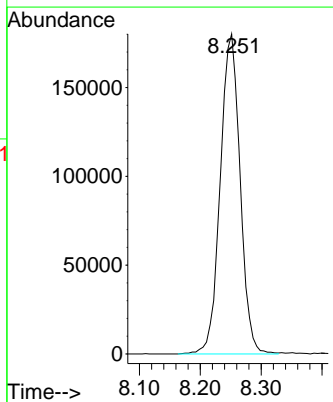
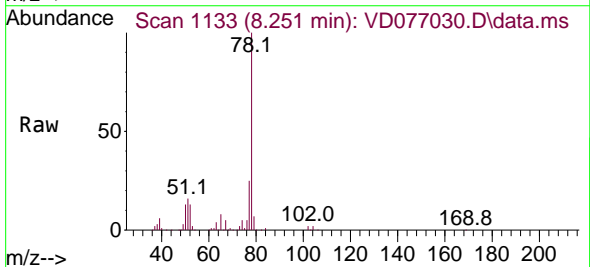


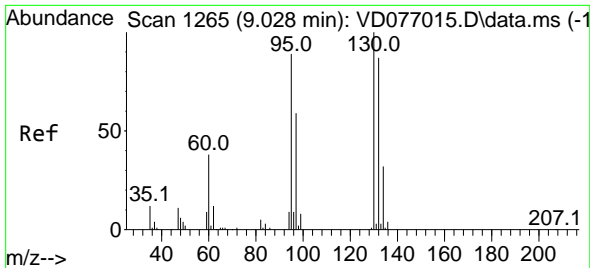
Tgt Ion:117 Resp: 125297  
 Ion Ratio Lower Upper  
 117 100  
 119 95.3 77.8 116.6



#33  
 Benzene  
 Concen: 25.623 ug/L  
 RT: 8.251 min Scan# 1133  
 Delta R.T. 0.006 min  
 Lab File: VD077030.D  
 Acq: 25 Aug 2023 22:01

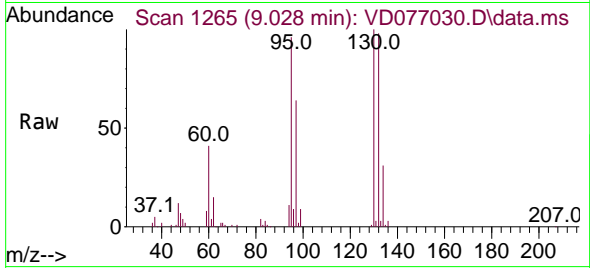
Tgt Ion: 78 Resp: 408375



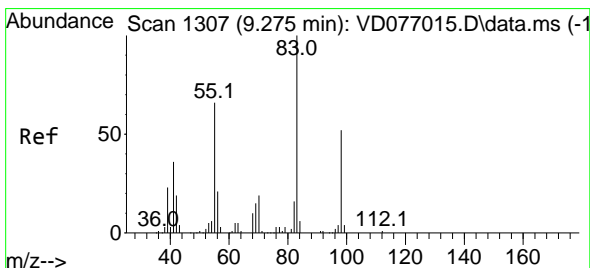
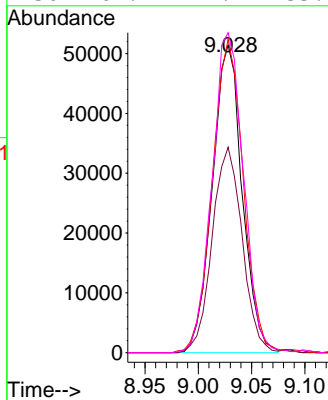
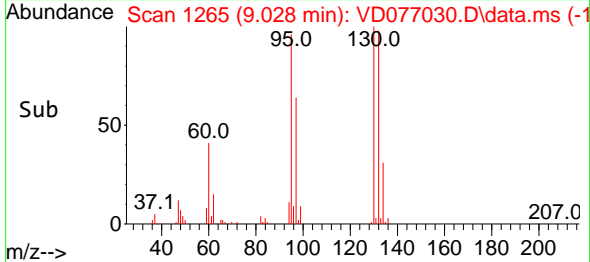


#34  
 Trichloroethene  
 Concen: 24.103 ug/L  
 RT: 9.028 min Scan# 11  
 Delta R.T. 0.000 min  
 Lab File: VD077030.D  
 Acq: 25 Aug 2023 22:01

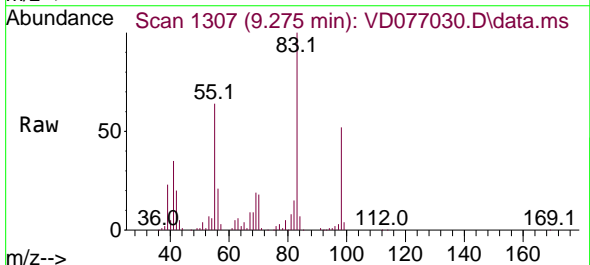
Instrument :  
 MSVOA\_D  
 ClientSampleId :



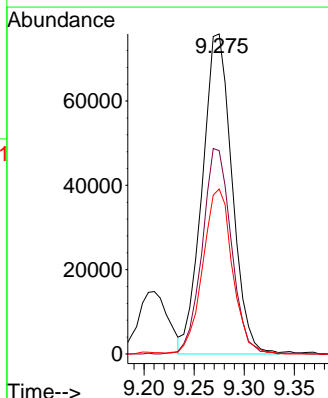
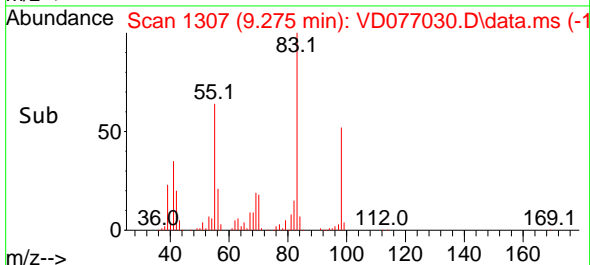
Tgt Ion: 95 Resp: 100041  
 Ion Ratio Lower Upper  
 95 100  
 97 66.8 43.1 80.1  
 132 101.9 71.8 133.4  
 130 104.1 71.9 133.5



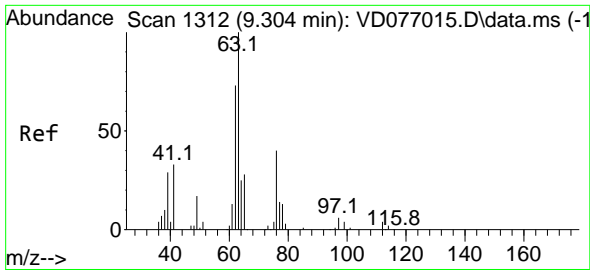
#35  
 Methylcyclohexane  
 Concen: 23.202 ug/L  
 RT: 9.275 min Scan# 1307  
 Delta R.T. 0.000 min  
 Lab File: VD077030.D  
 Acq: 25 Aug 2023 22:01



Tgt Ion: 83 Resp: 157046  
 Ion Ratio Lower Upper  
 83 100  
 55 62.2 59.8 89.6  
 98 51.2 37.8 56.6



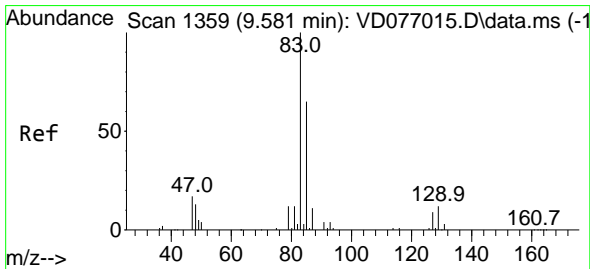
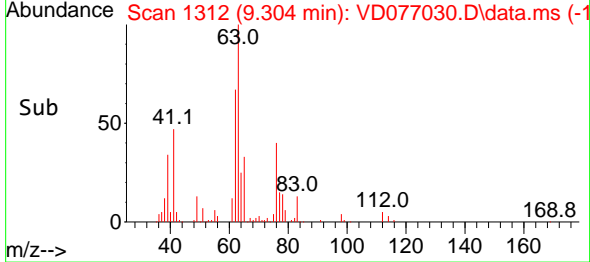
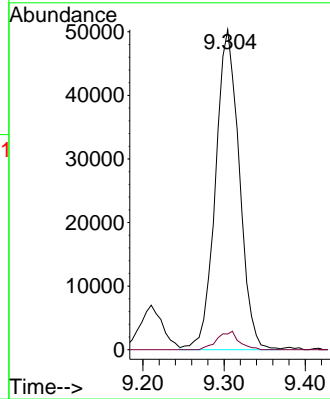
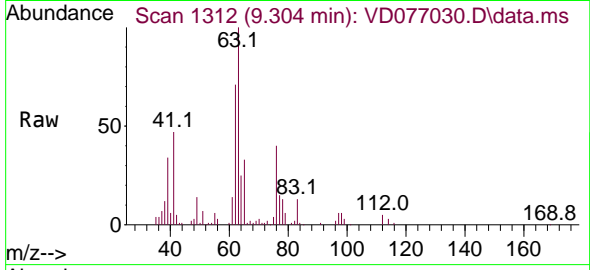




#37  
 1,2-Dichloropropane  
 Concen: 25.353 ug/L  
 RT: 9.304 min Scan# 1312  
 Delta R.T. 0.000 min  
 Lab File: VD077030.D  
 Acq: 25 Aug 2023 22:01

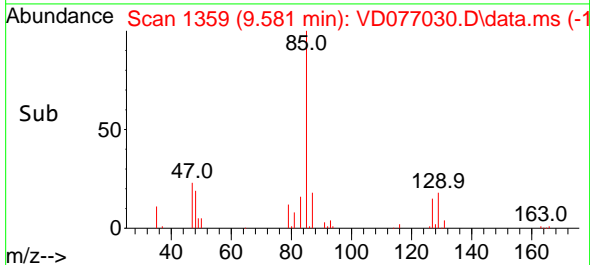
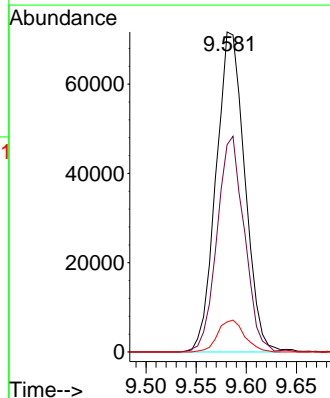
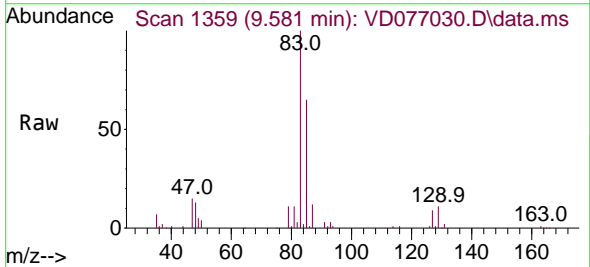
Instrument :  
 MSVOA\_D  
 ClientSampleId :

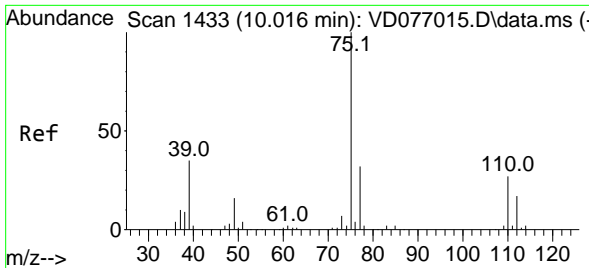
Tgt Ion: 63 Resp: 102646  
 Ion Ratio Lower Upper  
 63 100  
 112 5.2 3.1 4.7#



#38  
 Bromodichloromethane  
 Concen: 25.609 ug/L  
 RT: 9.581 min Scan# 1359  
 Delta R.T. 0.000 min  
 Lab File: VD077030.D  
 Acq: 25 Aug 2023 22:01

Tgt Ion: 83 Resp: 142777  
 Ion Ratio Lower Upper  
 83 100  
 85 64.8 43.9 81.5  
 127 9.4 6.6 9.8

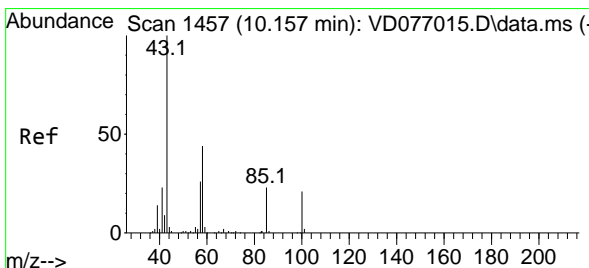
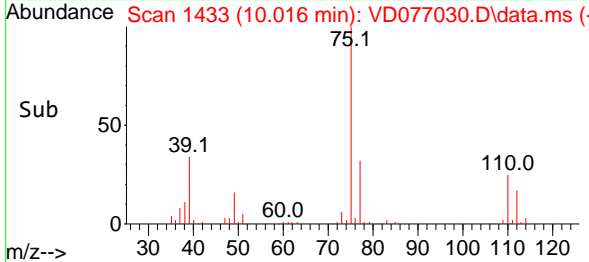
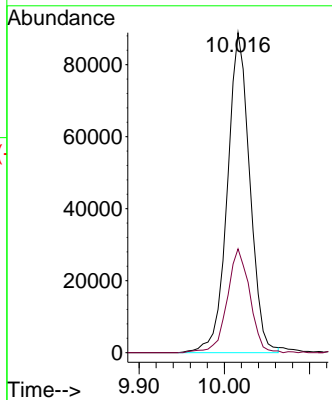
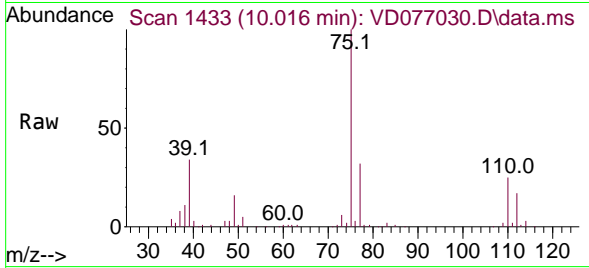




#39  
 cis-1,3-Dichloropropene  
 Concen: 24.883 ug/L  
 RT: 10.016 min Scan# 1433  
 Delta R.T. 0.000 min  
 Lab File: VD077030.D  
 Acq: 25 Aug 2023 22:01

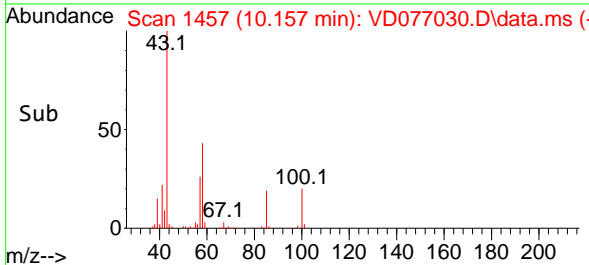
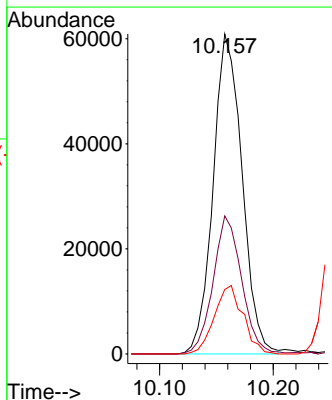
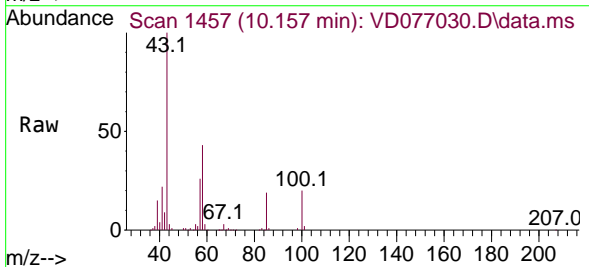
Instrument :  
 MSVOA\_D  
 ClientSampleId :

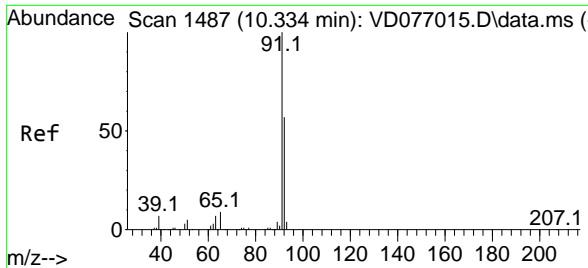
Tgt Ion: 75 Resp: 162589  
 Ion Ratio Lower Upper  
 75 100  
 77 32.5 22.7 42.3



#40  
 4-Methyl-2-pentanone  
 Concen: 42.231 ug/L  
 RT: 10.157 min Scan# 1457  
 Delta R.T. 0.000 min  
 Lab File: VD077030.D  
 Acq: 25 Aug 2023 22:01

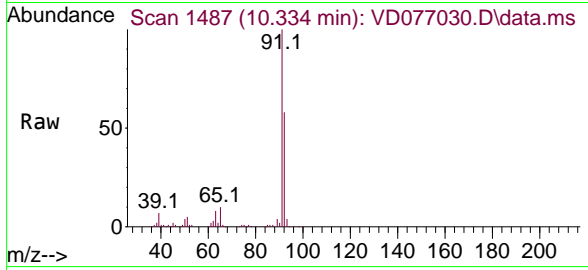
Tgt Ion: 43 Resp: 107727  
 Ion Ratio Lower Upper  
 43 100  
 58 42.6 30.7 46.1  
 100 21.2 11.0 16.4#



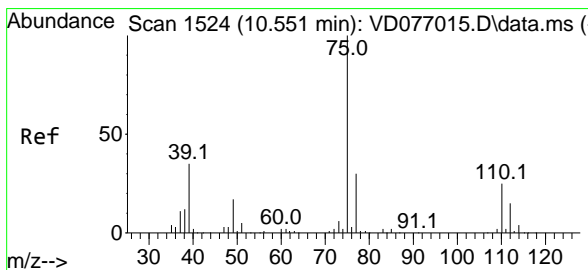
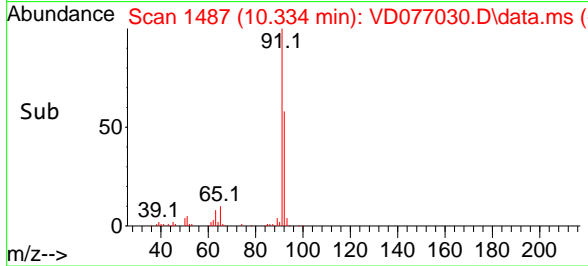
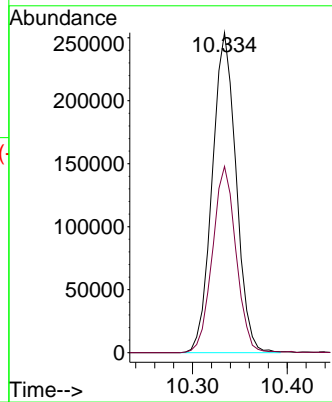


#42  
 Toluene  
 Concen: 25.649 ug/L  
 RT: 10.334 min Scan# 1487  
 Delta R.T. 0.000 min  
 Lab File: VD077030.D  
 Acq: 25 Aug 2023 22:01

Instrument : MSVOA\_D  
 ClientSampleId :

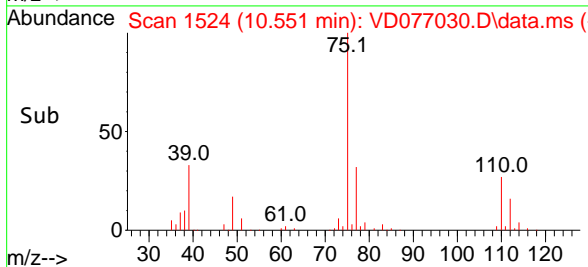
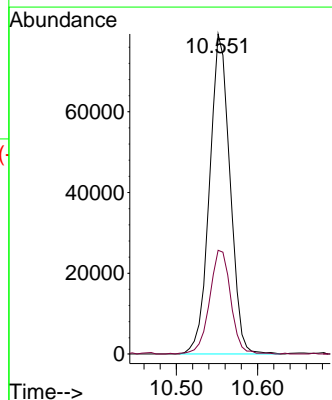
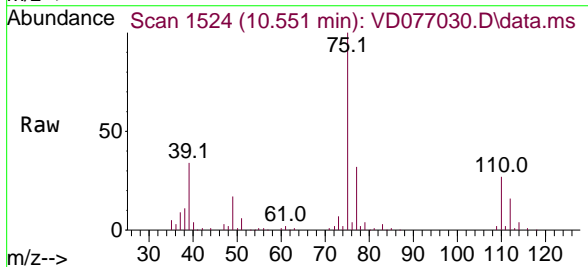


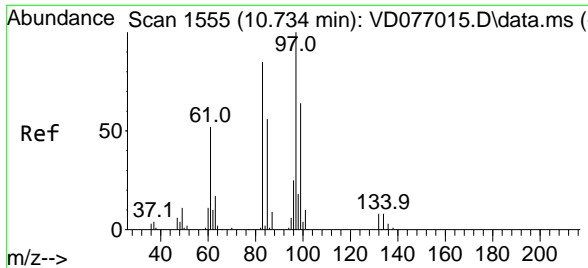
Tgt Ion: 91 Resp: 444506  
 Ion Ratio Lower Upper  
 91 100  
 92 58.2 39.3 73.1



#44  
 trans-1,3-Dichloropropene  
 Concen: 24.272 ug/L  
 RT: 10.551 min Scan# 1524  
 Delta R.T. 0.000 min  
 Lab File: VD077030.D  
 Acq: 25 Aug 2023 22:01

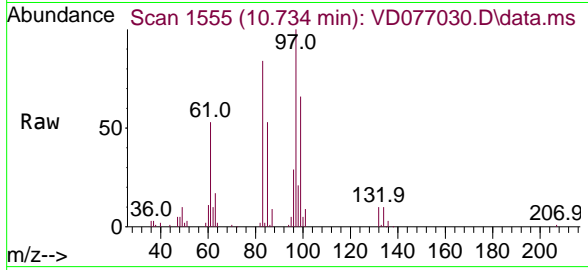
Tgt Ion: 75 Resp: 138606  
 Ion Ratio Lower Upper  
 75 100  
 77 32.4 22.5 41.7





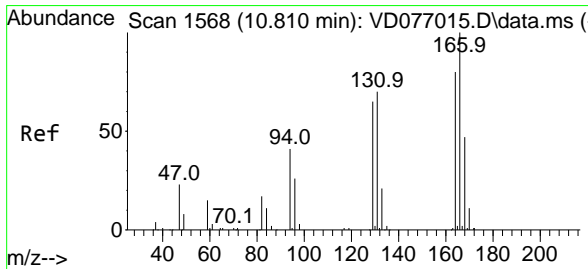
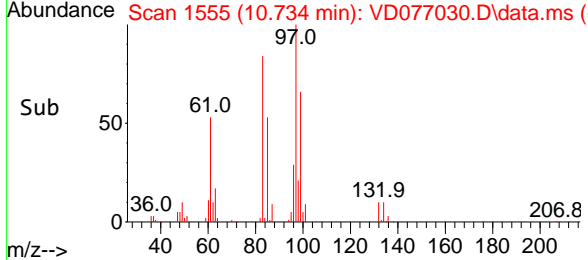
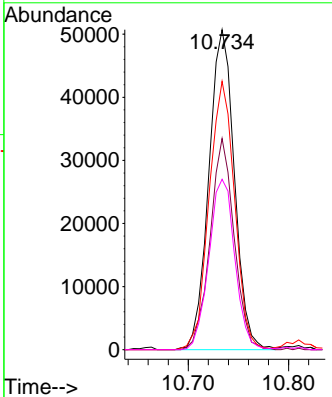
#45  
 1,1,2-Trichloroethane  
 Concen: 24.959 ug/L  
 RT: 10.734 min Scan# 1555  
 Delta R.T. 0.000 min  
 Lab File: VD077030.D  
 Acq: 25 Aug 2023 22:01

Instrument : MSVOA\_D  
 ClientSampleId :



Tgt Ion: 97 Resp: 89806

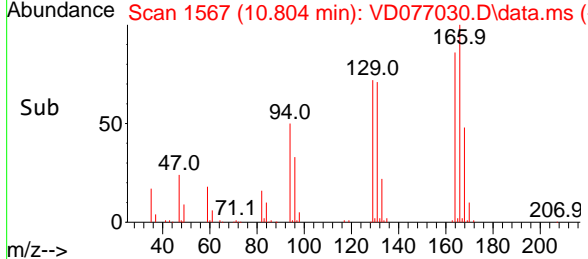
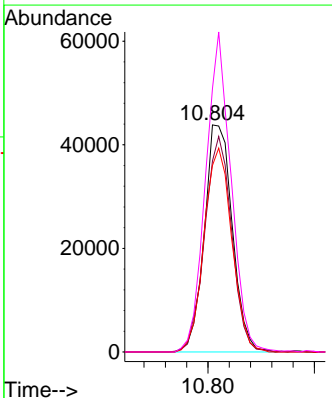
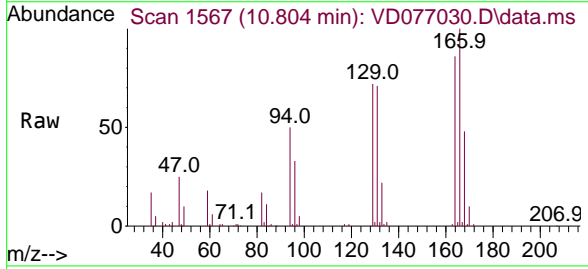
| Ion | Ratio | Lower | Upper |
|-----|-------|-------|-------|
| 97  | 100   |       |       |
| 99  | 66.0  | 41.9  | 77.9  |
| 83  | 83.8  | 59.2  | 110.0 |
| 85  | 53.2  | 39.8  | 73.8  |

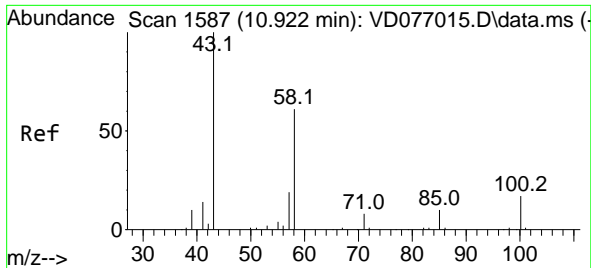


#46  
 Tetrachloroethene  
 Concen: 25.542 ug/L  
 RT: 10.804 min Scan# 1567  
 Delta R.T. -0.006 min  
 Lab File: VD077030.D  
 Acq: 25 Aug 2023 22:01

Tgt Ion: 164 Resp: 79899

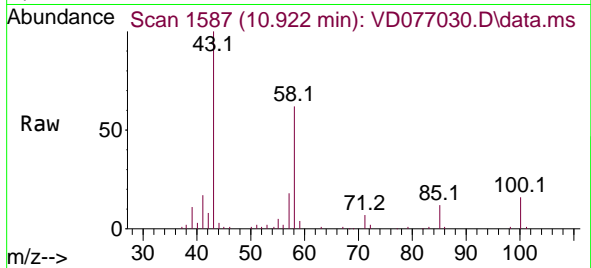
| Ion | Ratio | Lower | Upper |
|-----|-------|-------|-------|
| 164 | 100   |       |       |
| 129 | 84.2  | 65.5  | 121.6 |
| 131 | 82.2  | 64.8  | 120.3 |
| 166 | 116.1 | 97.2  | 180.4 |





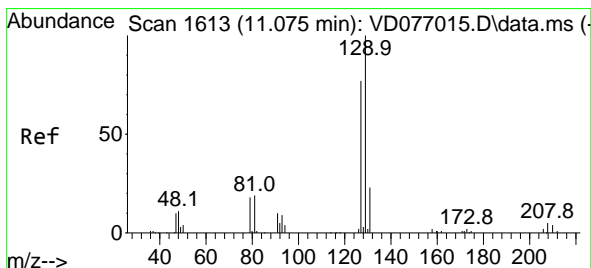
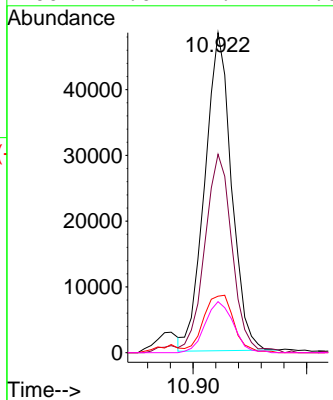
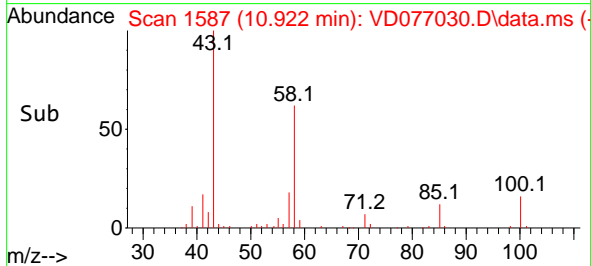
#48  
 2-Hexanone  
 Concen: 40.230 ug/L  
 RT: 10.922 min Scan# 1587  
 Delta R.T. 0.000 min  
 Lab File: VD077030.D  
 Acq: 25 Aug 2023 22:01

Instrument : MSVOA\_D  
 ClientSampleId :

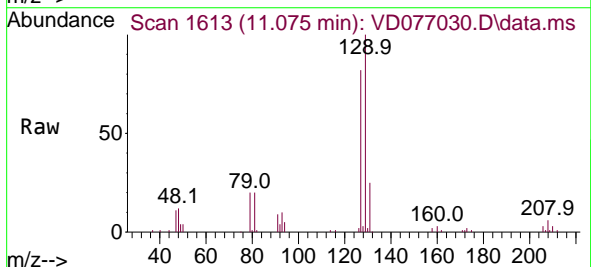


Tgt Ion: 43 Resp: 78919

| Ion | Ratio | Lower | Upper |
|-----|-------|-------|-------|
| 43  | 100   |       |       |
| 58  | 63.3  | 42.9  | 64.3  |
| 57  | 20.3  | 13.7  | 20.5  |
| 100 | 17.0  | 9.4   | 14.0  |

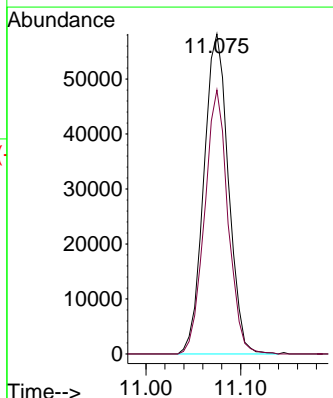
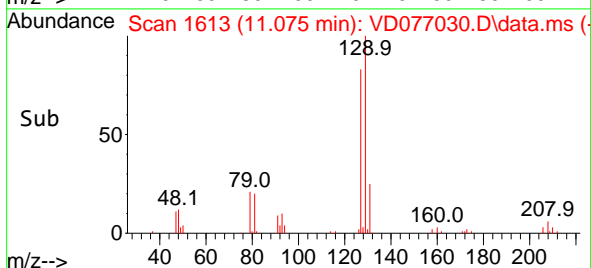


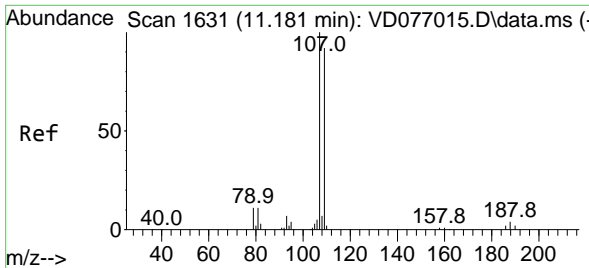
#49  
 Dibromochloromethane  
 Concen: 26.189 ug/L  
 RT: 11.075 min Scan# 1613  
 Delta R.T. 0.000 min  
 Lab File: VD077030.D  
 Acq: 25 Aug 2023 22:01



Tgt Ion: 129 Resp: 104832

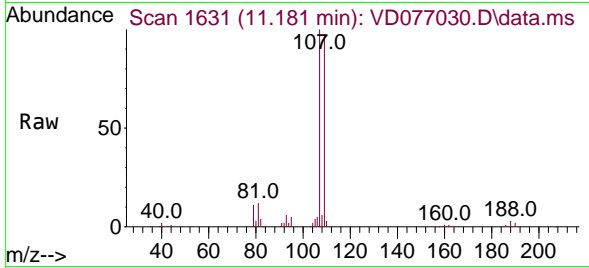
| Ion | Ratio | Lower | Upper |
|-----|-------|-------|-------|
| 129 | 100   |       |       |
| 127 | 82.5  | 55.2  | 102.6 |



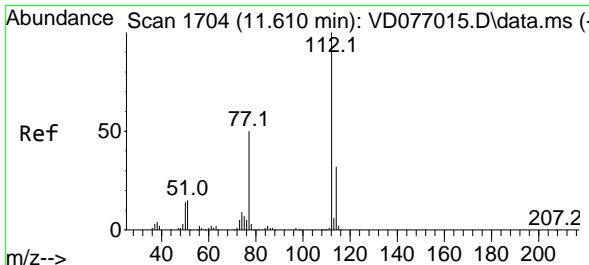
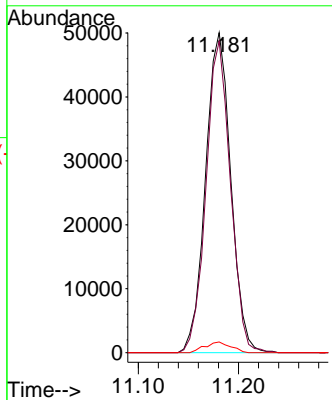
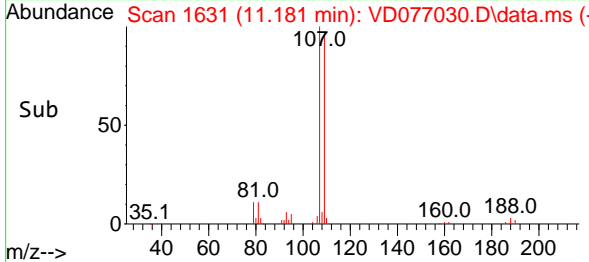


#50  
 1,2-Dibromoethane  
 Concen: 24.981 ug/L  
 RT: 11.181 min Scan# 1  
 Delta R.T. 0.000 min  
 Lab File: VD077030.D  
 Acq: 25 Aug 2023 22:01

Instrument :  
 MSVOA\_D  
 ClientSampleId :

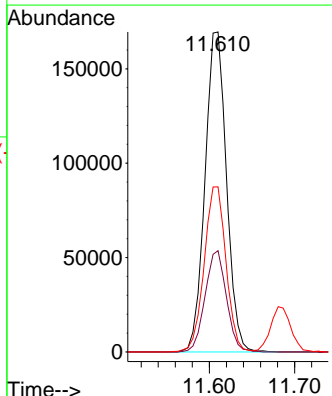
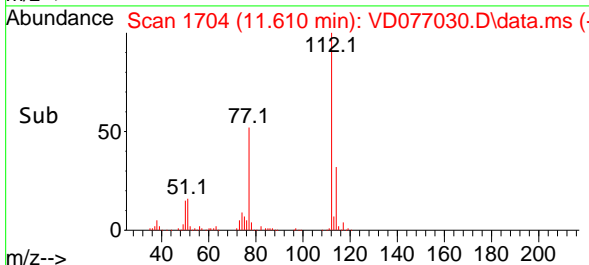
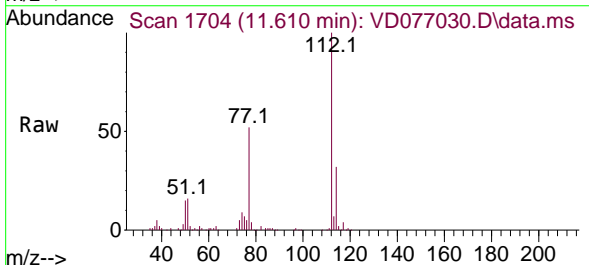


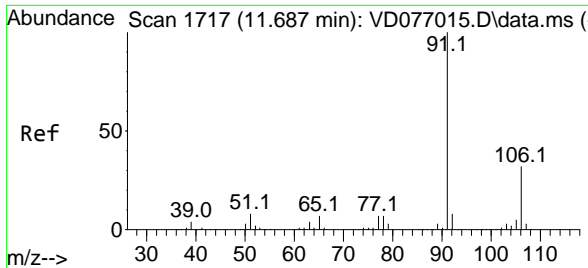
Tgt Ion:107 Resp: 87667  
 Ion Ratio Lower Upper  
 107 100  
 109 97.3 58.8 109.2  
 188 3.4 2.9 4.3



#51  
 Chlorobenzene  
 Concen: 26.288 ug/L  
 RT: 11.610 min Scan# 1704  
 Delta R.T. 0.000 min  
 Lab File: VD077030.D  
 Acq: 25 Aug 2023 22:01

Tgt Ion:112 Resp: 296827  
 Ion Ratio Lower Upper  
 112 100  
 114 31.7 21.5 39.9  
 77 51.6 43.4 65.2

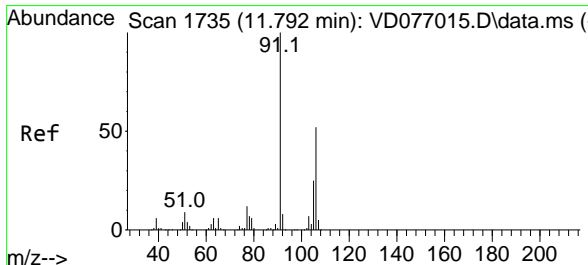
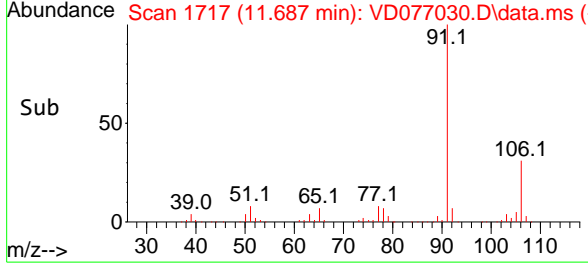
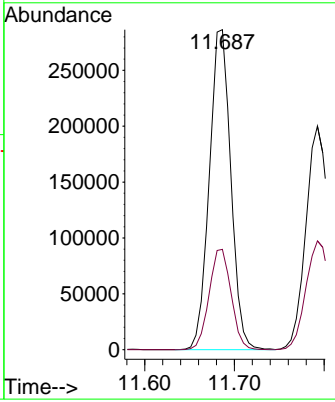
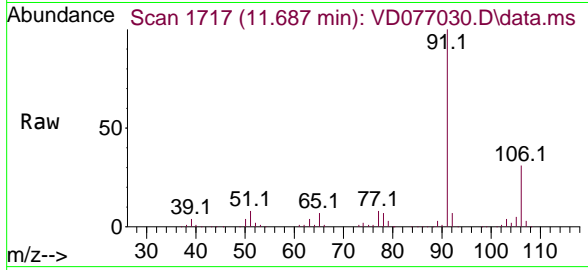




#52  
 Ethylbenzene  
 Concen: 25.807 ug/L  
 RT: 11.687 min Scan# 1717  
 Delta R.T. 0.000 min  
 Lab File: VD077030.D  
 Acq: 25 Aug 2023 22:01

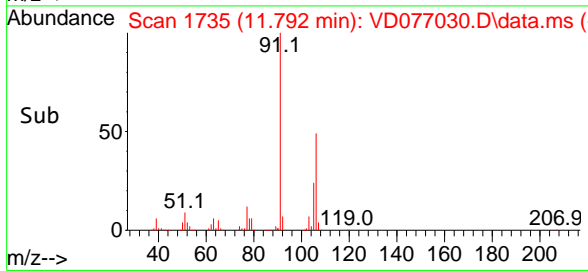
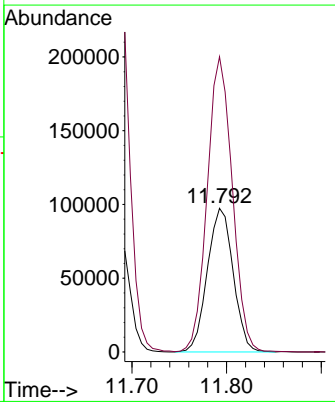
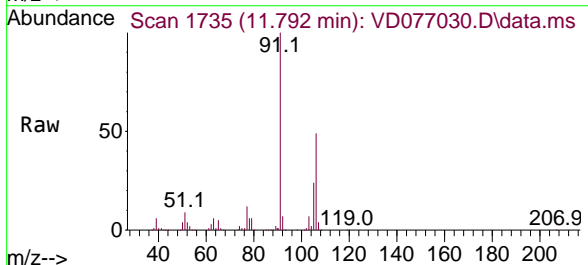
Instrument : MSVOA\_D  
 ClientSampleId :

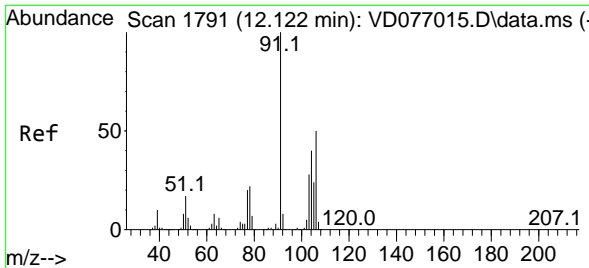
Tgt Ion: 91 Resp: 476578  
 Ion Ratio Lower Upper  
 91 100  
 106 31.4 22.4 41.6



#53  
 m,p-Xylene  
 Concen: 25.924 ug/L  
 RT: 11.792 min Scan# 1735  
 Delta R.T. 0.000 min  
 Lab File: VD077030.D  
 Acq: 25 Aug 2023 22:01

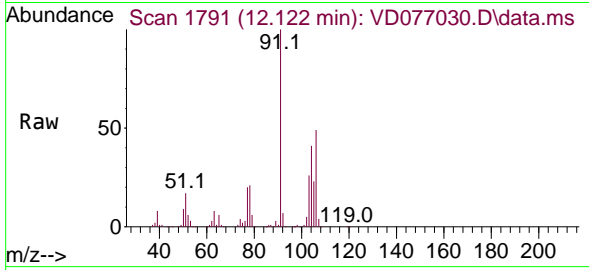
Tgt Ion: 106 Resp: 184723  
 Ion Ratio Lower Upper  
 106 100  
 91 205.5 141.5 262.9



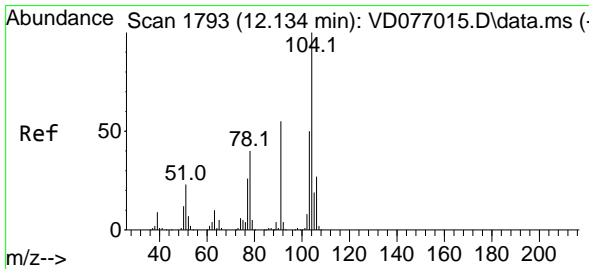
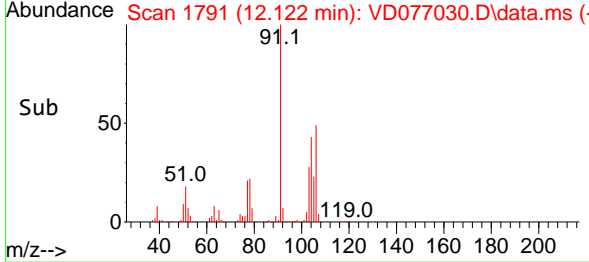
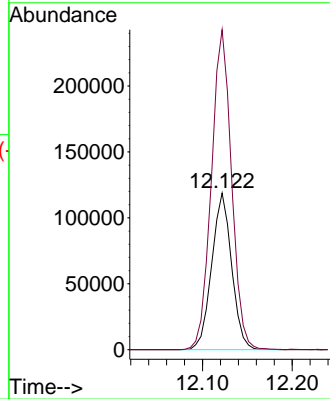


#54  
 o-Xylene  
 Concen: 26.759 ug/L  
 RT: 12.122 min Scan# 1791  
 Delta R.T. 0.000 min  
 Lab File: VD077030.D  
 Acq: 25 Aug 2023 22:01

Instrument : MSVOA\_D  
 ClientSampleId :

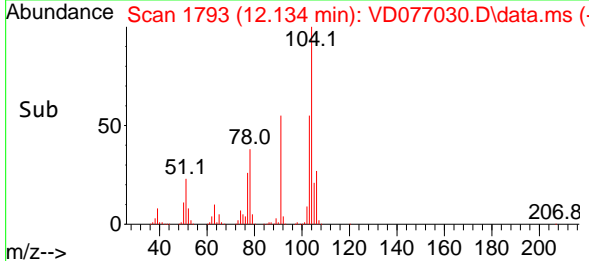
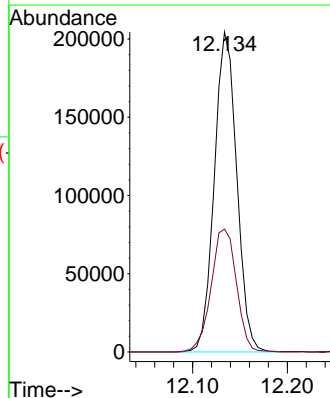
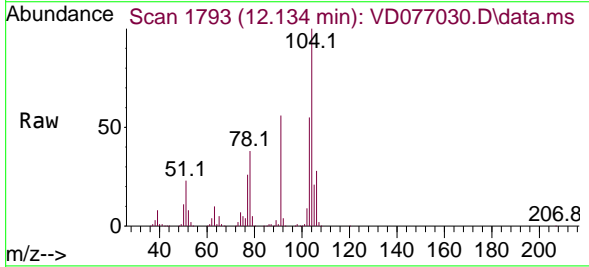


Tgt Ion:106 Resp: 183388  
 Ion Ratio Lower Upper  
 106 100  
 91 204.2 142.2 264.2

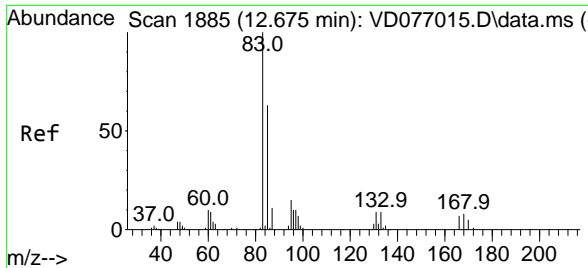


#55  
 Styrene  
 Concen: 27.186 ug/L  
 RT: 12.134 min Scan# 1793  
 Delta R.T. 0.000 min  
 Lab File: VD077030.D  
 Acq: 25 Aug 2023 22:01

Tgt Ion:104 Resp: 336870  
 Ion Ratio Lower Upper  
 104 100  
 78 38.4 31.3 58.1

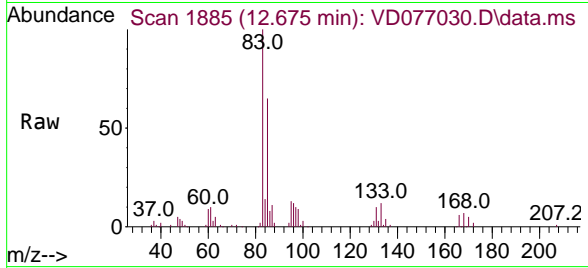




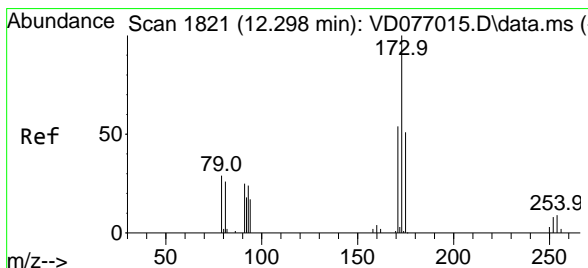
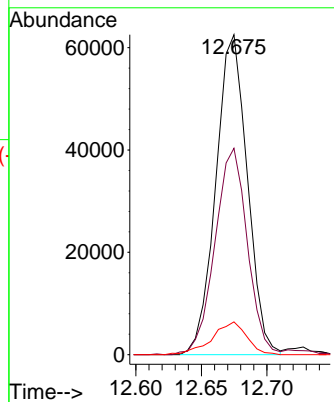
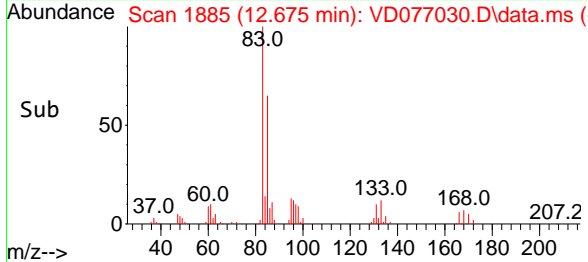


#57  
 1,1,2,2-Tetrachloroethane  
 Concen: 23.491 ug/L  
 RT: 12.675 min Scan# 1885  
 Delta R.T. 0.000 min  
 Lab File: VD077030.D  
 Acq: 25 Aug 2023 22:01

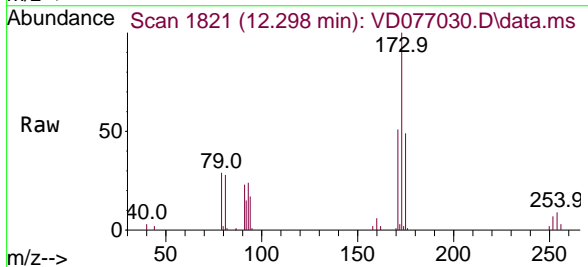
Instrument : MSVOA\_D  
 ClientSampleId :



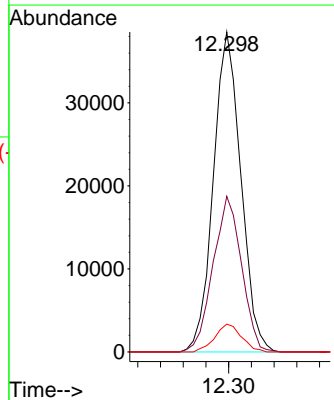
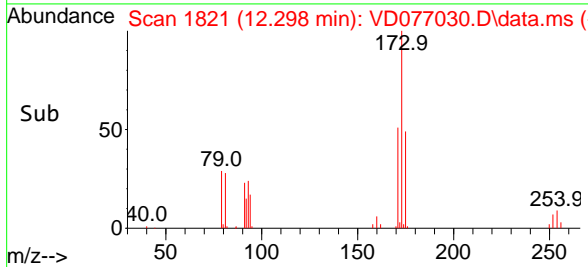
Tgt Ion: 83 Resp: 104543  
 Ion Ratio Lower Upper  
 83 100  
 85 64.5 46.3 86.1  
 131 10.3 7.0 10.4

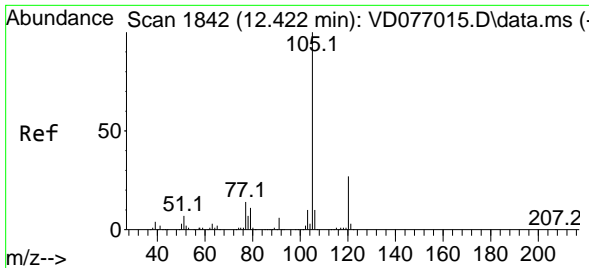


#59  
 Bromoform  
 Concen: 23.980 ug/L  
 RT: 12.298 min Scan# 1821  
 Delta R.T. 0.000 min  
 Lab File: VD077030.D  
 Acq: 25 Aug 2023 22:01



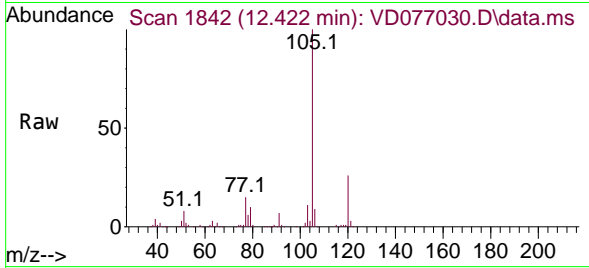
Tgt Ion: 173 Resp: 64713  
 Ion Ratio Lower Upper  
 173 100  
 175 50.4 39.0 58.4  
 254 8.5 5.3 7.9#





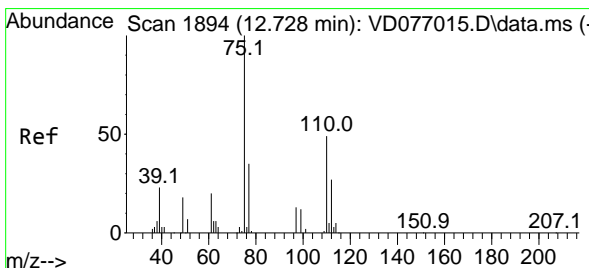
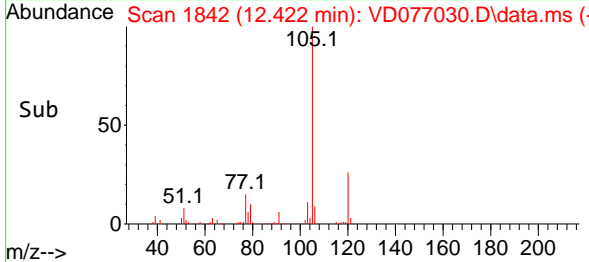
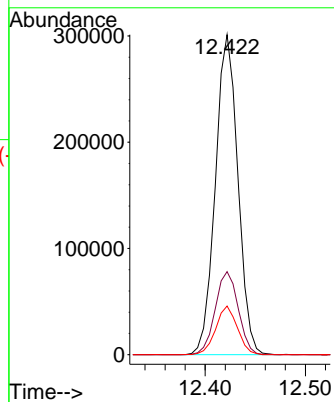
#60  
 Isopropylbenzene  
 Concen: 23.992 ug/L  
 RT: 12.422 min Scan# 1842  
 Delta R.T. 0.000 min  
 Lab File: VD077030.D  
 Acq: 25 Aug 2023 22:01

Instrument : MSVOA\_D  
 ClientSampleId :

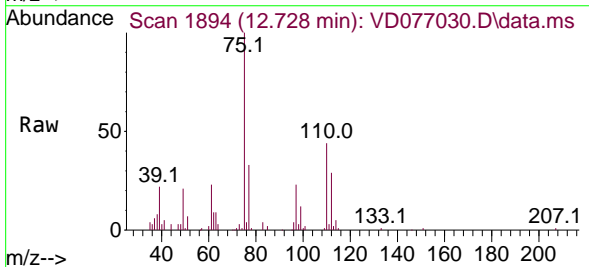


Tgt Ion:105 Resp: 469518

| Ion | Ratio | Lower | Upper |
|-----|-------|-------|-------|
| 105 | 100   |       |       |
| 120 | 26.5  | 21.3  | 31.9  |
| 77  | 14.6  | 12.2  | 18.4  |

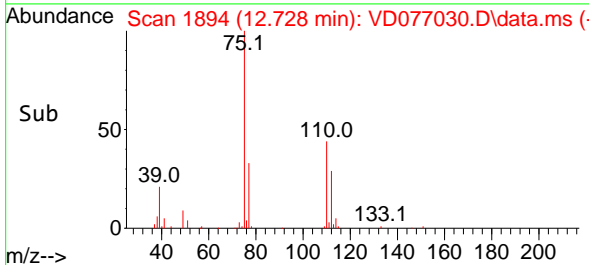
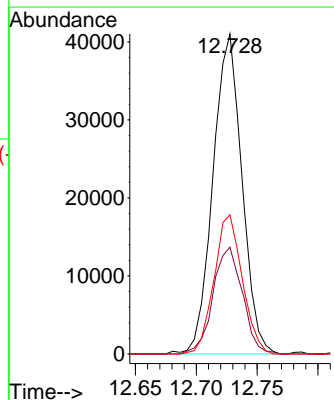


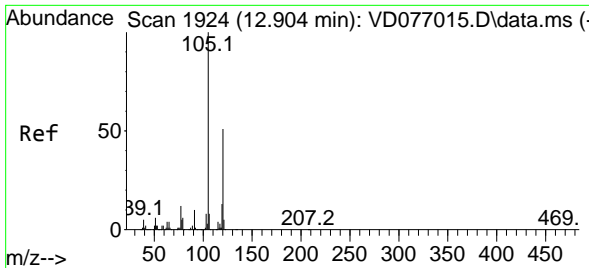
#61  
 1,2,3-Trichloropropane  
 Concen: 21.351 ug/L  
 RT: 12.728 min Scan# 1894  
 Delta R.T. 0.000 min  
 Lab File: VD077030.D  
 Acq: 25 Aug 2023 22:01



Tgt Ion: 75 Resp: 67805

| Ion | Ratio | Lower | Upper |
|-----|-------|-------|-------|
| 75  | 100   |       |       |
| 77  | 33.9  | 27.2  | 40.8  |
| 110 | 42.5  | 31.8  | 47.6  |

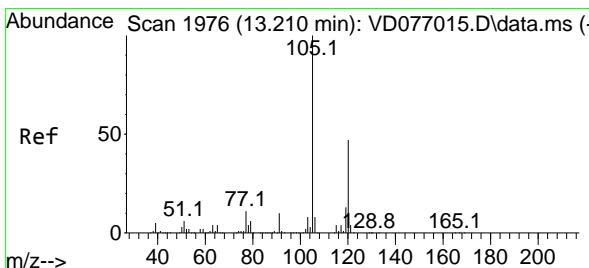
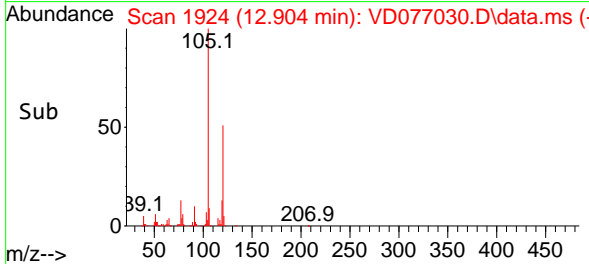
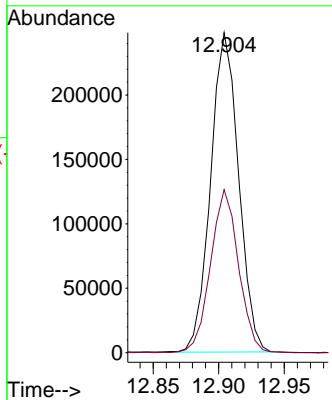
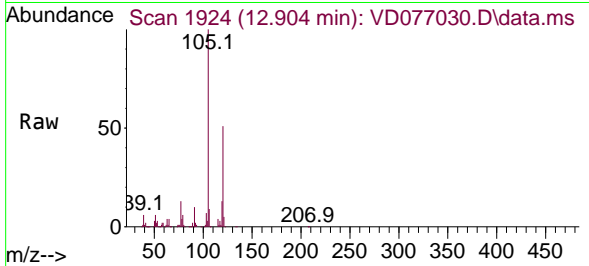




#62  
 1,3,5-Trimethylbenzene  
 Concen: 24.651 ug/L  
 RT: 12.904 min Scan# 1924  
 Delta R.T. 0.000 min  
 Lab File: VD077030.D  
 Acq: 25 Aug 2023 22:01

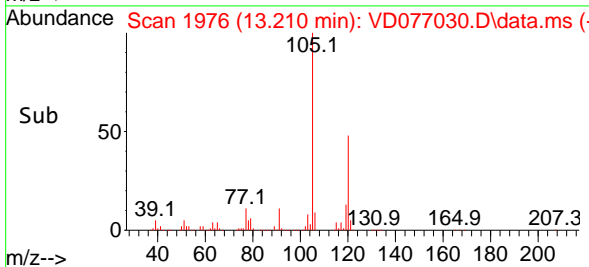
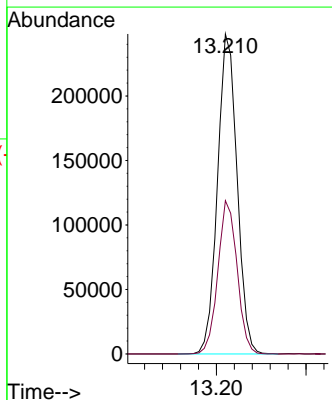
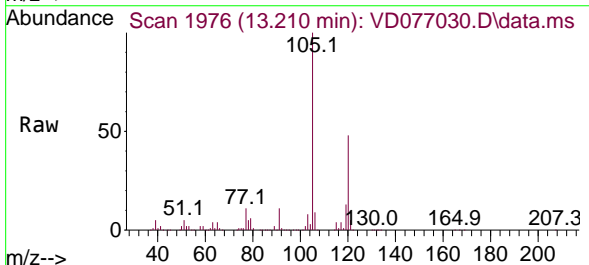
Instrument : MSVOA\_D  
 ClientSampleId :

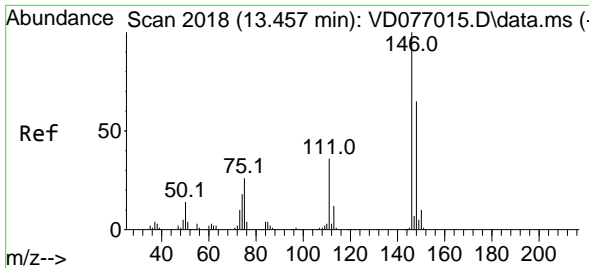
Tgt Ion:105 Resp: 367495  
 Ion Ratio Lower Upper  
 105 100  
 120 51.1 39.8 59.6



#63  
 1,2,4-Trimethylbenzene  
 Concen: 25.267 ug/L  
 RT: 13.210 min Scan# 1976  
 Delta R.T. 0.000 min  
 Lab File: VD077030.D  
 Acq: 25 Aug 2023 22:01

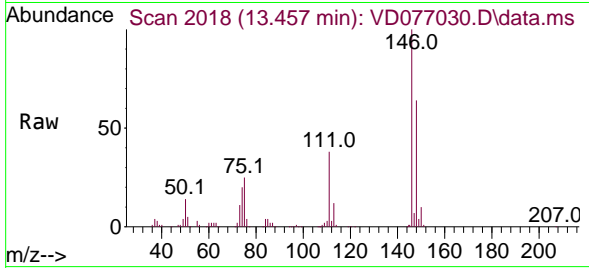
Tgt Ion:105 Resp: 374866  
 Ion Ratio Lower Upper  
 105 100  
 120 47.0 37.5 56.3



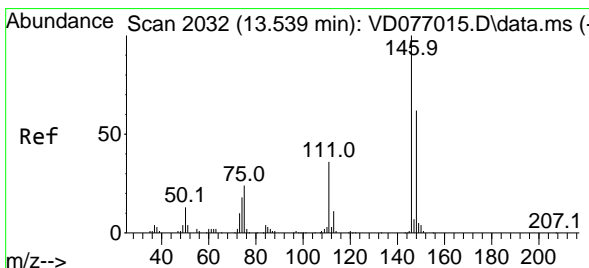
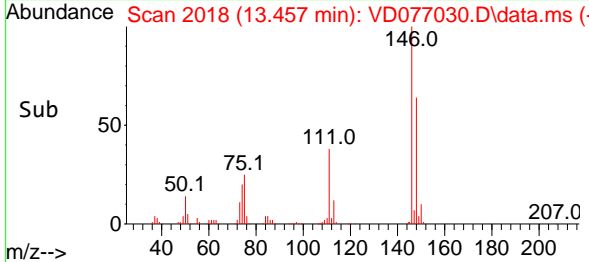
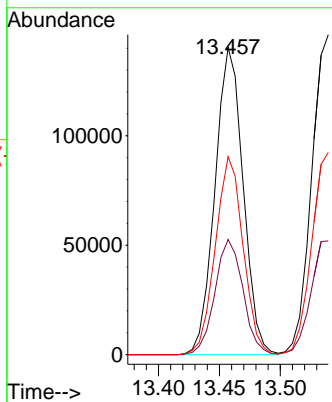


#64  
 1,3-Dichlorobenzene  
 Concen: 25.298 ug/L  
 RT: 13.457 min Scan# 2018  
 Delta R.T. 0.000 min  
 Lab File: VD077030.D  
 Acq: 25 Aug 2023 22:01

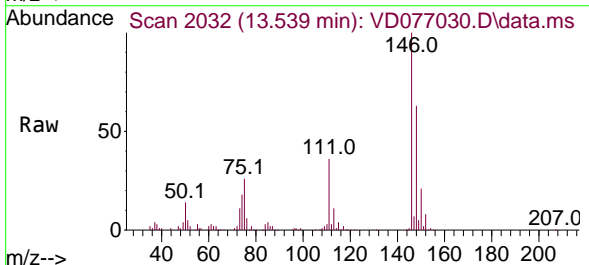
Instrument :  
 MSVOA\_D  
 ClientSampleId :



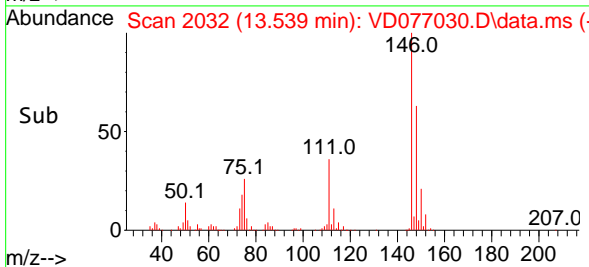
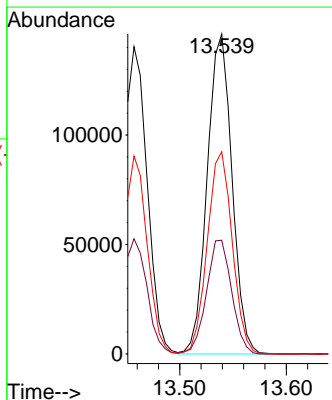
Tgt Ion:146 Resp: 225941  
 Ion Ratio Lower Upper  
 146 100  
 111 37.5 25.6 47.4  
 148 64.4 44.3 82.3

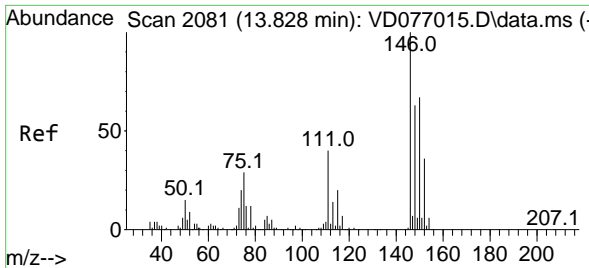


#65  
 1,4-Dichlorobenzene  
 Concen: 25.609 ug/L  
 RT: 13.539 min Scan# 2032  
 Delta R.T. 0.000 min  
 Lab File: VD077030.D  
 Acq: 25 Aug 2023 22:01



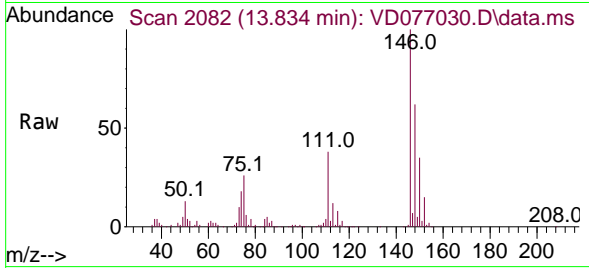
Tgt Ion:146 Resp: 236415  
 Ion Ratio Lower Upper  
 146 100  
 111 35.5 25.7 47.7  
 148 63.2 45.4 84.2





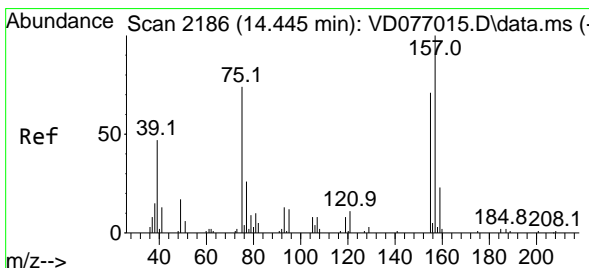
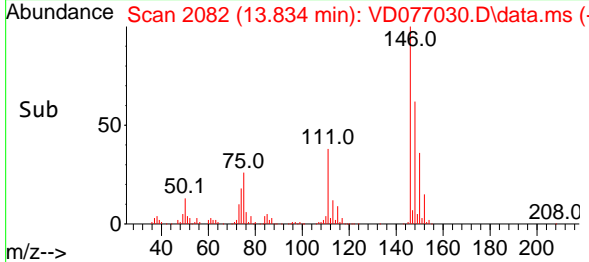
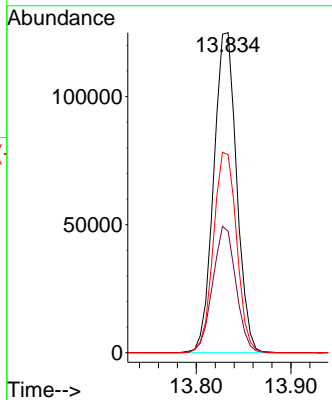
#67  
 1,2-Dichlorobenzene  
 Concen: 25.192 ug/L  
 RT: 13.834 min Scan# 2082  
 Delta R.T. 0.006 min  
 Lab File: VD077030.D  
 Acq: 25 Aug 2023 22:01

Instrument : MSVOA\_D  
 ClientSampleId :



Tgt Ion:146 Resp: 210921

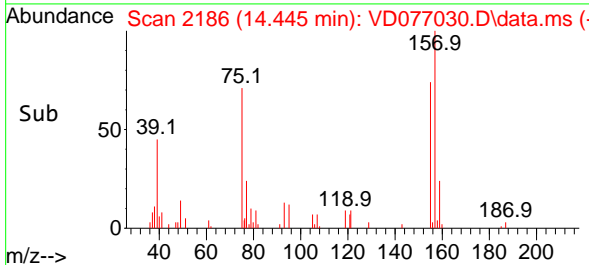
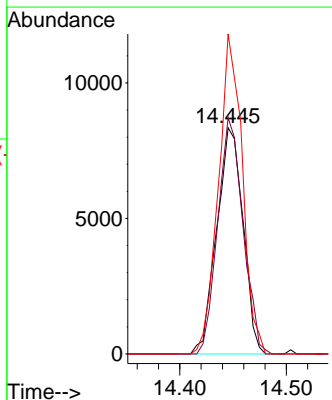
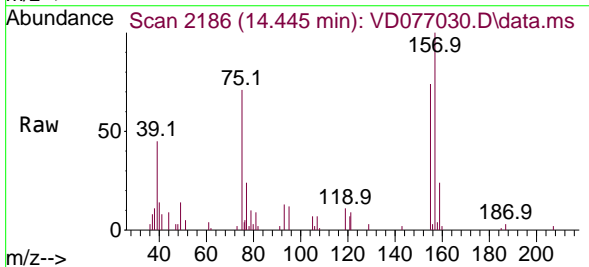
| Ion | Ratio | Lower | Upper |
|-----|-------|-------|-------|
| 146 | 100   |       |       |
| 111 | 37.9  | 31.3  | 46.9  |
| 148 | 61.9  | 51.7  | 77.5  |

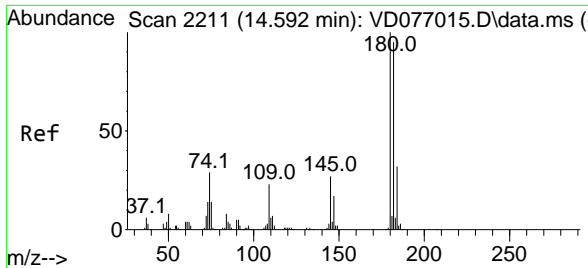


#68  
 1,2-Dibromo-3-chloropropane  
 Concen: 19.634 ug/L  
 RT: 14.445 min Scan# 2186  
 Delta R.T. 0.000 min  
 Lab File: VD077030.D  
 Acq: 25 Aug 2023 22:01

Tgt Ion: 75 Resp: 14287

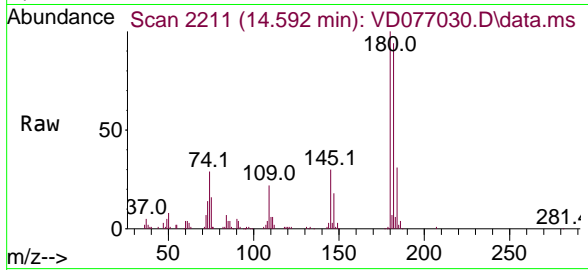
| Ion | Ratio | Lower | Upper |
|-----|-------|-------|-------|
| 75  | 100   |       |       |
| 155 | 104.4 | 76.2  | 114.4 |
| 157 | 141.4 | 89.4  | 134.2 |



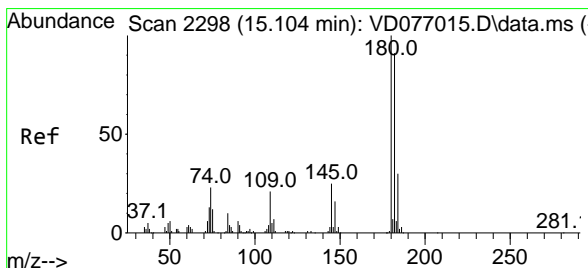
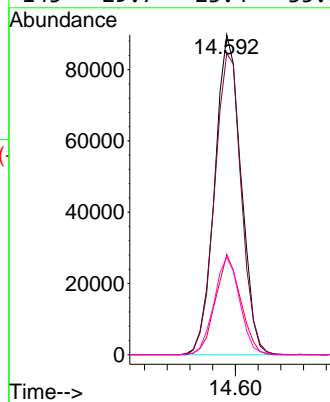
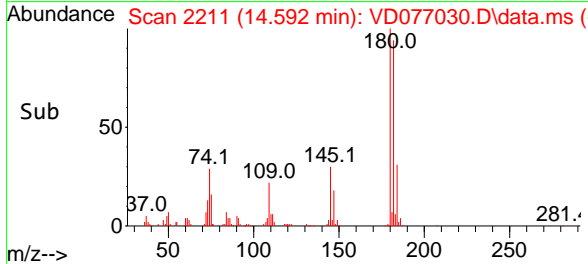


#69  
 1,3,5-Trichlorobenzene  
 Concen: 25.823 ug/L  
 RT: 14.592 min Scan# 2211  
 Delta R.T. 0.000 min  
 Lab File: VD077030.D  
 Acq: 25 Aug 2023 22:01

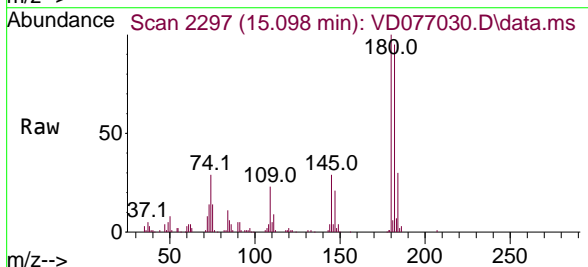
Instrument : MSVOA\_D  
 ClientSampled :



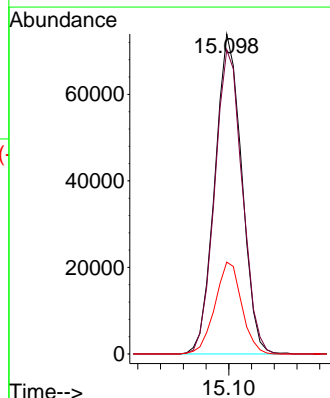
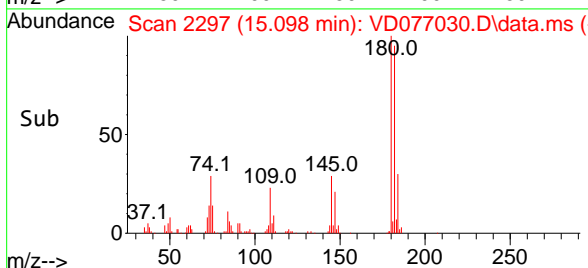
Tgt Ion:180 Resp: 144327  
 Ion Ratio Lower Upper  
 180 100  
 182 95.4 77.1 115.7  
 184 29.8 25.0 37.4  
 145 29.7 23.4 35.0

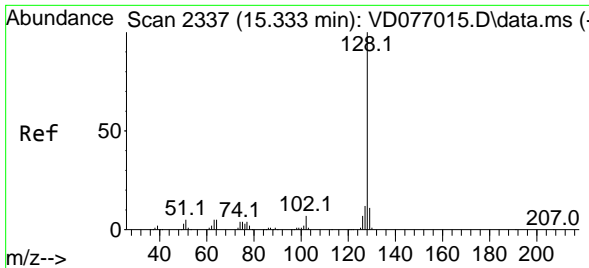


#70  
 1,2,4-trichlorobenzene  
 Concen: 24.727 ug/L  
 RT: 15.098 min Scan# 2297  
 Delta R.T. -0.006 min  
 Lab File: VD077030.D  
 Acq: 25 Aug 2023 22:01



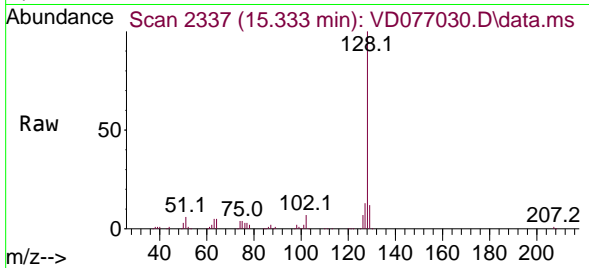
Tgt Ion:180 Resp: 121570  
 Ion Ratio Lower Upper  
 180 100  
 182 97.3 76.9 115.3  
 145 28.5 23.5 35.3



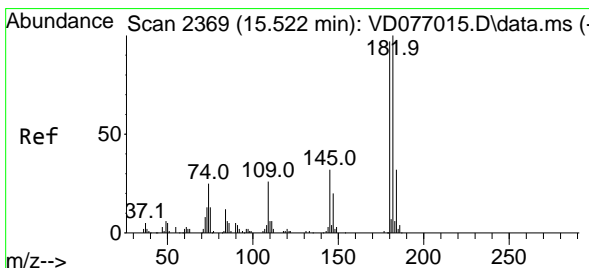
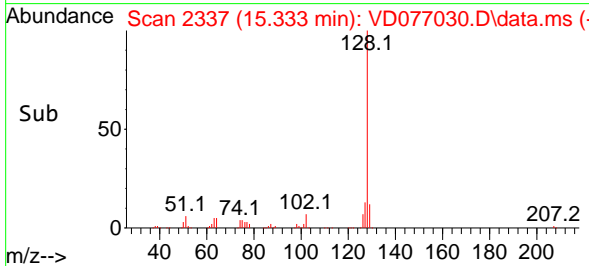
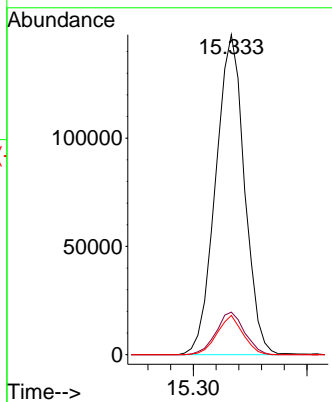


#71  
 Naphthalene  
 Concen: 22.510 ug/L  
 RT: 15.333 min Scan# 21  
 Delta R.T. 0.000 min  
 Lab File: VD077030.D  
 Acq: 25 Aug 2023 22:01

Instrument :  
 MSVOA\_D  
 ClientSampleId :



Tgt Ion:128 Resp: 260216  
 Ion Ratio Lower Upper  
 128 100  
 127 13.2 10.8 16.2  
 129 11.0 8.6 12.8



#72  
 1,2,3-Trichlorobenzene  
 Concen: 26.662 ug/L  
 RT: 15.522 min Scan# 2369  
 Delta R.T. 0.000 min  
 Lab File: VD077030.D  
 Acq: 25 Aug 2023 22:01

Tgt Ion:180 Resp: 118878  
 Ion Ratio Lower Upper  
 180 100  
 182 94.1 74.3 111.5  
 145 30.6 25.0 37.6

