

Data Path : Z:\voasrv\HPCHEM1\MSVOA\_D\Data\VD082523\  
 Data File : VD077030.D  
 Acq On : 25 Aug 2023 22:01  
 Operator : JC/SY  
 Sample : 04172-13MSD  
 Misc : 4.11G/10.0ml/MSVOA\_D/SOIL  
 ALS Vial : 17 Sample Multiplier: 1

Instrument :  
 MSVOA\_D  
 ClientSampleId :  
 DCHW4MSD

Quant Time: Aug 25 23:58:39 2023  
 Quant Method : Z:\voasrv\HPCHEM1\MSVOA\_D\Method\SFAMDLM080323SMA.M  
 Quant Title : SFAM01.0  
 QLast Update : Fri Aug 25 23:54:22 2023  
 Response via : Initial Calibration

Compound	R.T.	QIon	Response	Conc	Units	Dev(Min)
Internal Standards						
1) 1,4-Difluorobenzene	8.775	114	236998	25.000	ug/L	0.00
28) Chlorobenzene-d5	11.581	117	243145	25.000	ug/L	0.00
58) 1,4-Dichlorobenzene-d4	13.516	152	136072	25.000	ug/L	0.00
System Monitoring Compounds						
4) Vinyl Chloride-d3	2.269	65	121202	18.596	ug/L	0.00
Spiked Amount	25.000	Range 30 - 150	Recovery =	74.400%		
7) Chloroethane-d5	2.793	69	129184	21.440	ug/L	0.00
Spiked Amount	25.000	Range 30 - 150	Recovery =	85.760%		
11) 1,1-Dichloroethene-d2	3.911	65	29954	19.396	ug/L	0.00
Spiked Amount	25.000	Range 45 - 110	Recovery =	77.600%		
21) 2-Butanone-d5	6.987	46	53684	51.303	ug/L	0.00
Spiked Amount	50.000	Range 20 - 135	Recovery =	102.600%		
24) Chloroform-d	7.569	84	215688	27.948	ug/L	0.00
Spiked Amount	25.000	Range 40 - 150	Recovery =	111.800%		
26) 1,2-Dichloroethane-d4	8.228	65	106663	27.725	ug/L	0.00
Spiked Amount	25.000	Range 70 - 130	Recovery =	110.920%		
32) Benzene-d6	8.199	84	387521	25.349	ug/L	0.00
Spiked Amount	25.000	Range 20 - 135	Recovery =	101.400%		
36) 1,2-Dichloropropane-d6	9.210	67	124618	26.513	ug/L	0.00
Spiked Amount	25.000	Range 70 - 120	Recovery =	106.040%		
41) Toluene-d8	10.269	98	362816	25.886	ug/L	0.00
Spiked Amount	25.000	Range 30 - 130	Recovery =	103.560%		
43) trans-1,3-Dichloroprop...	10.522	79	52804	24.849	ug/L	0.00
Spiked Amount	25.000	Range 30 - 135	Recovery =	99.400%		
47) 2-Hexanone-d5	10.881	63	48563	54.089	ug/L	0.00
Spiked Amount	50.000	Range 20 - 135	Recovery =	108.180%		
56) 1,1,2,2-Tetrachloroeth...	12.651	84	128066	28.197	ug/L	0.00
Spiked Amount	25.000	Range 45 - 120	Recovery =	112.800%		
66) 1,2-Dichlorobenzene-d4	13.816	152	146203	29.389	ug/L	0.00
Spiked Amount	25.000	Range 75 - 120	Recovery =	117.560%		
Target Compounds						
2) Dichlorodifluoromethane	1.934	85	83936	21.367	ug/L	100
3) Chloromethane	2.146	50	150934	29.616	ug/L	100
5) Vinyl chloride	2.275	62	171864	23.582	ug/L	90
6) Bromomethane	2.687	94	116431	21.402	ug/L	97
8) Chloroethane	2.828	64	119057	24.267	ug/L	98
9) Trichlorofluoromethane	3.169	101	143168	23.726	ug/L	98
10) 1,1,2-Trichloro-1,2,2-...	3.958	101	92383	23.496	ug/L	98
12) 1,1-Dichloroethene	3.934	96	83585	23.974	ug/L	82
13) Acetone	4.016	43	42466	39.687	ug/L	97
14) Carbon disulfide	4.263	76	282687	23.361	ug/L	99
15) Methyl Acetate	4.558	43	36915	20.411	ug/L #	85
16) Methylene chloride	4.793	84	134115	26.977	ug/L #	72
17) trans-1,2-Dichloroethene	5.310	96	96087	24.340	ug/L	87
18) Methyl tert-butyl Ether	5.310	73	214785	24.627	ug/L #	94
19) 1,1-Dichloroethane	6.105	63	166182	25.212	ug/L	91
20) cis-1,2-Dichloroethene	7.075	96	112933	25.627	ug/L	90
22) 2-Butanone	7.087	43	54632	36.492	ug/L	79
23) Bromochloromethane	7.428	128	52884	24.742	ug/L #	75
25) Chloroform	7.599	83	187982	26.040	ug/L	96

Data Path : Z:\voasrv\HPCHEM1\MSVOA\_D\Data\VD082523\  
 Data File : VD077030.D  
 Acq On : 25 Aug 2023 22:01  
 Operator : JC/SY  
 Sample : 04172-13MSD  
 Misc : 4.11G/10.0ml/MSVOA\_D/SOIL  
 ALS Vial : 17 Sample Multiplier: 1

Instrument :  
 MSVOA\_D  
 ClientSampleId :  
 DCHW4MSD

Quant Time: Aug 25 23:58:39 2023  
 Quant Method : Z:\voasrv\HPCHEM1\MSVOA\_D\Method\SFAMDLM080323SMA.M  
 Quant Title : SFAM01.0  
 QLast Update : Fri Aug 25 23:54:22 2023  
 Response via : Initial Calibration

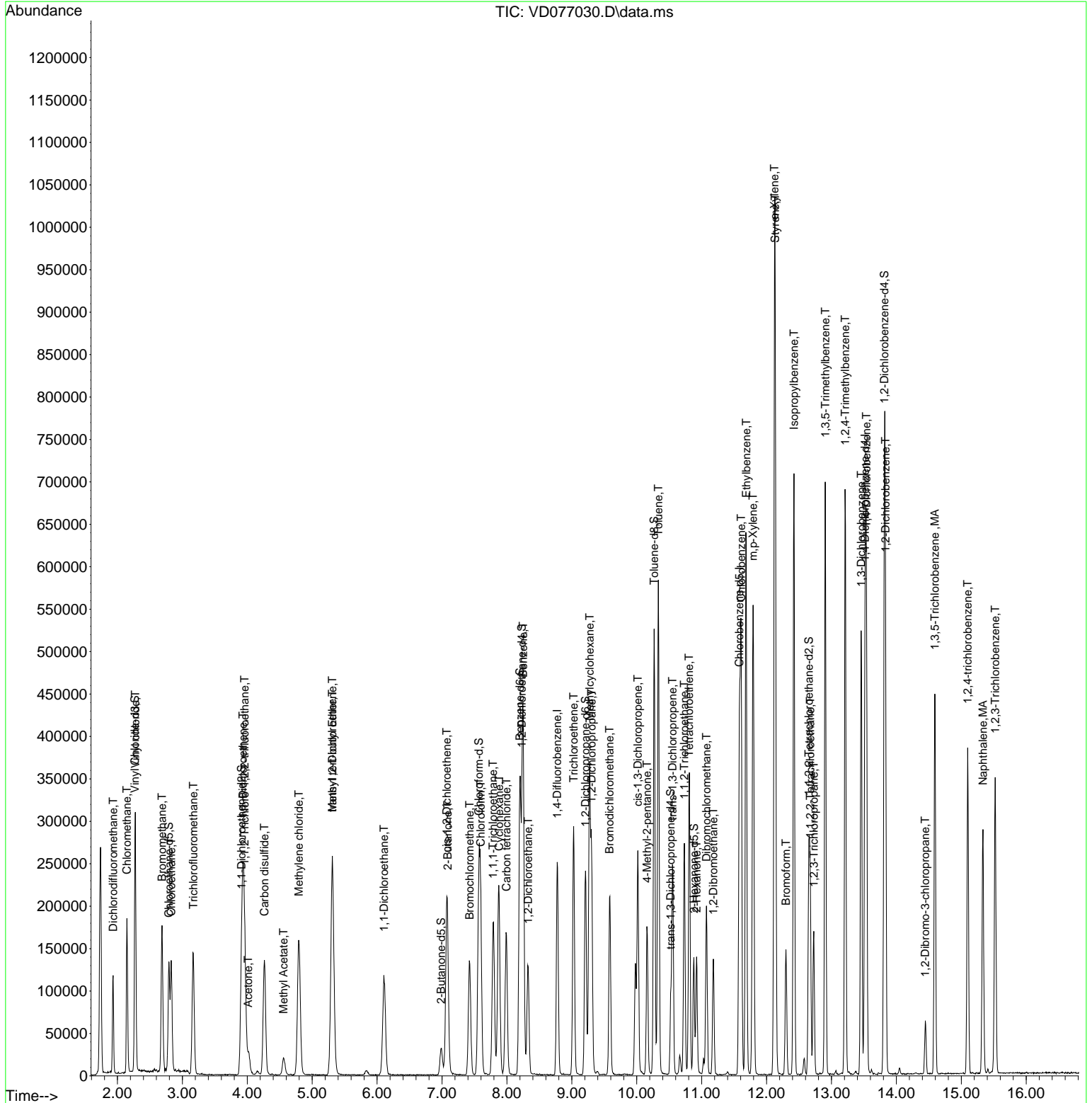
Compound	R.T.	QIon	Response	Conc	Units	Dev(Min)
27) 1,2-Dichloroethane	8.328	62	111749	24.699	ug/L	100
29) Cyclohexane	7.881	56	116683	21.800	ug/L #	80
30) 1,1,1-Trichloroethane	7.787	97	152346	25.287	ug/L	95
31) Carbon tetrachloride	7.993	117	125297	25.412	ug/L	98
33) Benzene	8.251	78	408375	25.623	ug/L	100
34) Trichloroethene	9.028	95	100041	24.103	ug/L	98
35) Methylcyclohexane	9.275	83	157046	23.202	ug/L	89
37) 1,2-Dichloropropane	9.304	63	102646	25.353	ug/L #	96
38) Bromodichloromethane	9.581	83	142777	25.609	ug/L	97
39) cis-1,3-Dichloropropene	10.016	75	162589	24.883	ug/L	100
40) 4-Methyl-2-pentanone	10.157	43	107727	42.231	ug/L #	90
42) Toluene	10.334	91	444506	25.649	ug/L	97
44) trans-1,3-Dichloropropene	10.551	75	138606	24.272	ug/L	99
45) 1,1,2-Trichloroethane	10.734	97	89806	24.959	ug/L	96
46) Tetrachloroethene	10.804	164	79899	25.542	ug/L	86
48) 2-Hexanone	10.922	43	78919	40.230	ug/L #	88
49) Dibromochloromethane	11.075	129	104832	26.189	ug/L	96
50) 1,2-Dibromoethane	11.181	107	87667	24.981	ug/L	86
51) Chlorobenzene	11.610	112	296827	26.288	ug/L	97
52) Ethylbenzene	11.687	91	476578	25.807	ug/L	99
53) m,p-Xylene	11.792	106	184723	25.924	ug/L	98
54) o-Xylene	12.122	106	183388	26.759	ug/L	99
55) Styrene	12.134	104	336870	27.186	ug/L	90
57) 1,1,2,2-Tetrachloroethane	12.675	83	104543	23.491	ug/L	98
59) Bromoform	12.298	173	64713	23.980	ug/L #	97
60) Isopropylbenzene	12.422	105	469518	23.992	ug/L	99
61) 1,2,3-Trichloropropane	12.728	75	67805	21.351	ug/L	97
62) 1,3,5-Trimethylbenzene	12.904	105	367495	24.651	ug/L	98
63) 1,2,4-Trimethylbenzene	13.210	105	374866	25.267	ug/L	100
64) 1,3-Dichlorobenzene	13.457	146	225941	25.298	ug/L	98
65) 1,4-Dichlorobenzene	13.539	146	236415	25.609	ug/L	98
67) 1,2-Dichlorobenzene	13.834	146	210921	25.192	ug/L	97
68) 1,2-Dibromo-3-chloropr...	14.445	75	14287	19.634	ug/L #	81
69) 1,3,5-Trichlorobenzene	14.592	180	144327	25.823	ug/L	99
70) 1,2,4-trichlorobenzene	15.098	180	121570	24.727	ug/L	99
71) Naphthalene	15.333	128	260216	22.510	ug/L	99
72) 1,2,3-Trichlorobenzene	15.522	180	118878	26.662	ug/L	99

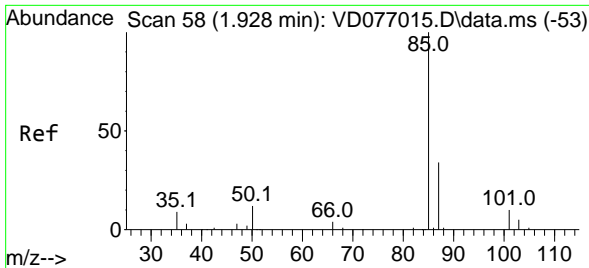
(#) = qualifier out of range (m) = manual integration (+) = signals summed

Data Path : Z:\voasrv\HPCHEM1\MSVOA\_D\Data\VD082523\  
 Data File : VD077030.D  
 Acq On : 25 Aug 2023 22:01  
 Operator : JC/SY  
 Sample : 04172-13MSD  
 Misc : 4.11G/10.0ml/MSVOA\_D/SOIL  
 ALS Vial : 17 Sample Multiplier: 1

Instrument :  
 MSVOA\_D  
 ClientSampleId :  
 DCHW4MSD

Quant Time: Aug 25 23:58:39 2023  
 Quant Method : Z:\voasrv\HPCHEM1\MSVOA\_D\Method\SFAMDL080323SMA.M  
 Quant Title : SFAM01.0  
 QLast Update : Fri Aug 25 23:54:22 2023  
 Response via : Initial Calibration

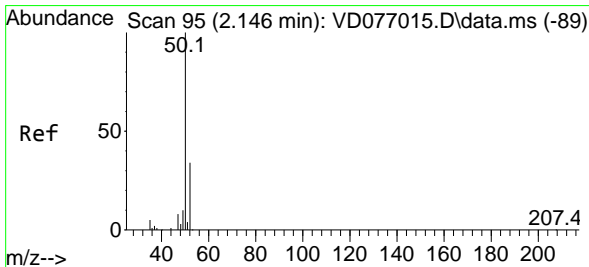
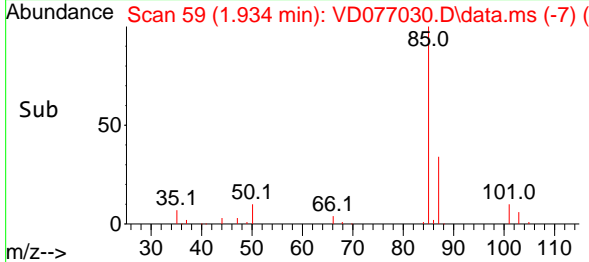
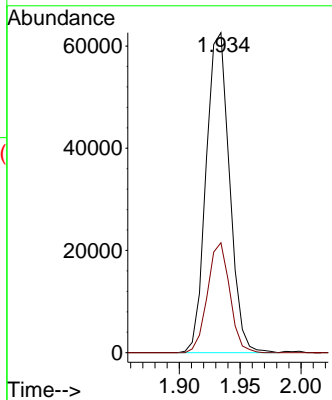
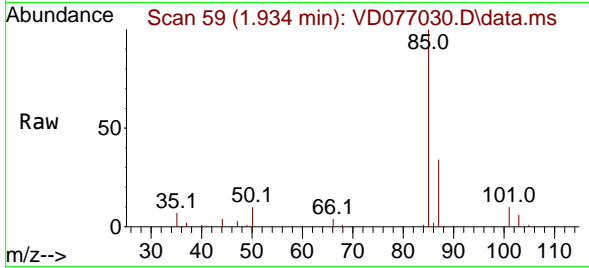




#2  
 Dichlorodifluoromethane  
 Concen: 21.367 ug/L  
 RT: 1.934 min Scan# 59  
 Delta R.T. 0.006 min  
 Lab File: VD077030.D  
 Acq: 25 Aug 2023 22:01

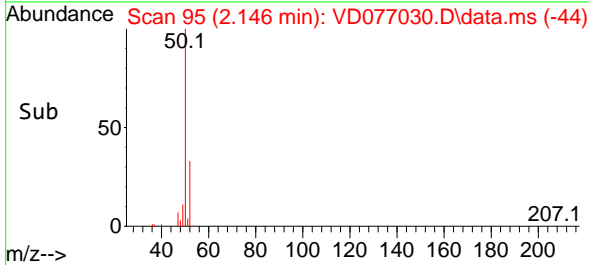
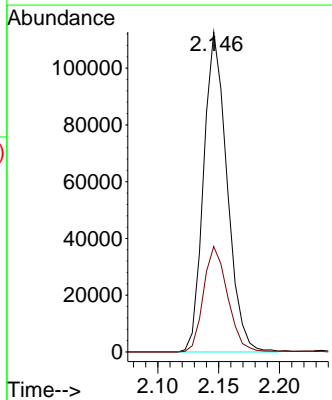
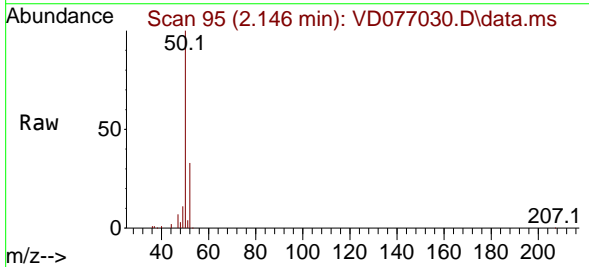
Instrument :  
 MSVOA\_D  
 ClientSampleId :  
 DCHW4MSD

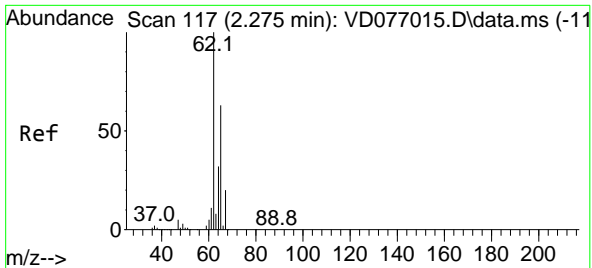
Tgt Ion: 85 Resp: 83936  
 Ion Ratio Lower Upper  
 85 100  
 87 32.6 26.3 39.5



#3  
 Chloromethane  
 Concen: 29.616 ug/L  
 RT: 2.146 min Scan# 95  
 Delta R.T. 0.000 min  
 Lab File: VD077030.D  
 Acq: 25 Aug 2023 22:01

Tgt Ion: 50 Resp: 150934  
 Ion Ratio Lower Upper  
 50 100  
 52 32.9 23.2 43.2

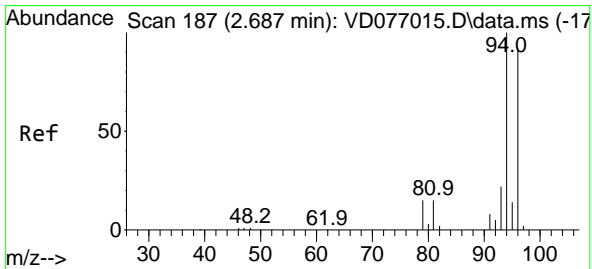
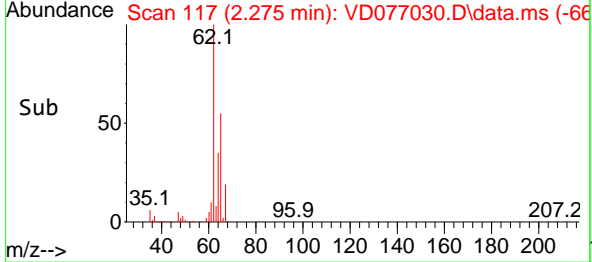
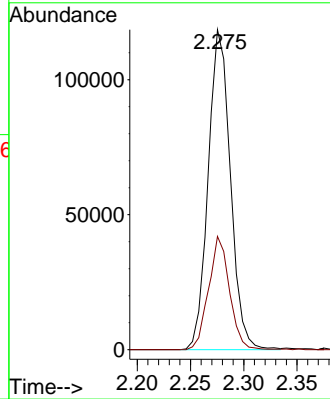
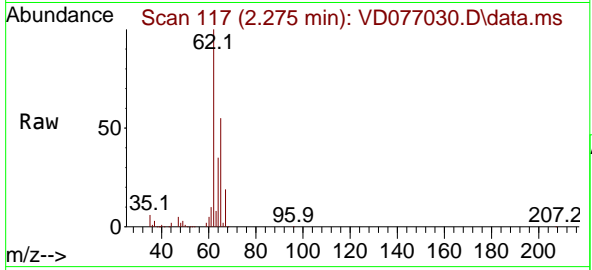




#5  
 Vinyl chloride  
 Concen: 23.582 ug/L  
 RT: 2.275 min Scan# 117  
 Delta R.T. 0.000 min  
 Lab File: VD077030.D  
 Acq: 25 Aug 2023 22:01

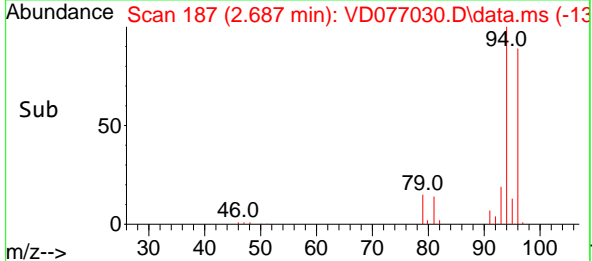
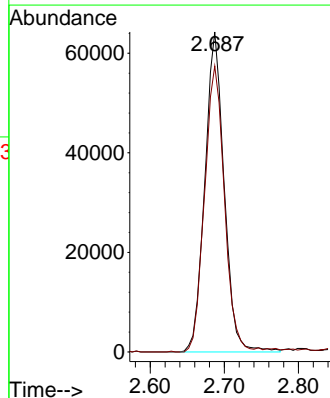
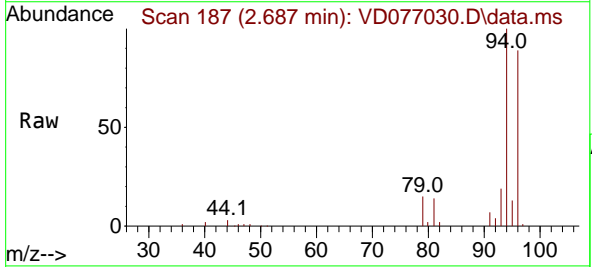
Instrument :  
 MSVOA\_D  
 ClientSampleId :  
 DCHW4MSD

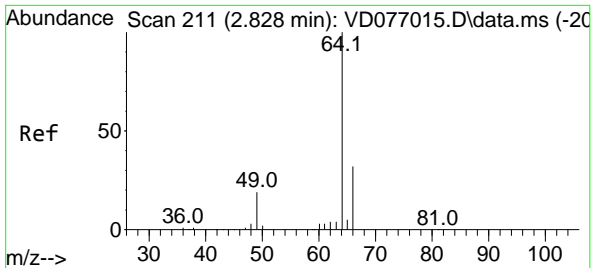
Tgt Ion: 62 Resp: 171864  
 Ion Ratio Lower Upper  
 62 100  
 64 35.4 21.1 39.1



#6  
 Bromomethane  
 Concen: 21.402 ug/L  
 RT: 2.687 min Scan# 187  
 Delta R.T. 0.000 min  
 Lab File: VD077030.D  
 Acq: 25 Aug 2023 22:01

Tgt Ion: 94 Resp: 116431  
 Ion Ratio Lower Upper  
 94 100  
 96 89.4 64.7 120.1

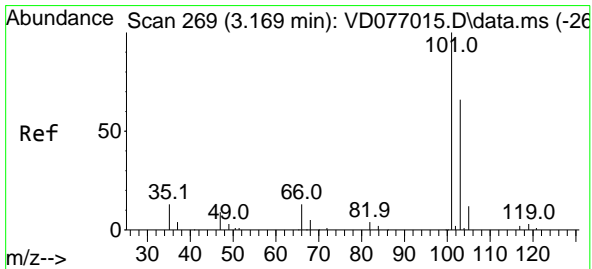
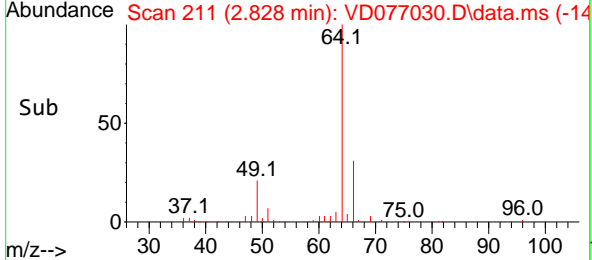
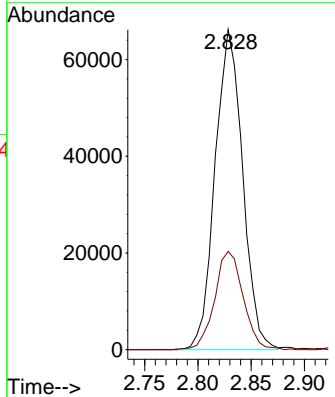
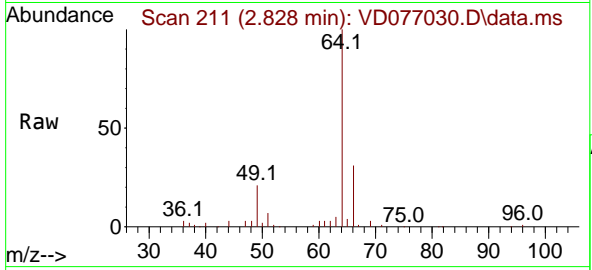




#8  
 Chloroethane  
 Concen: 24.267 ug/L  
 RT: 2.828 min Scan# 211  
 Delta R.T. 0.000 min  
 Lab File: VD077030.D  
 Acq: 25 Aug 2023 22:01

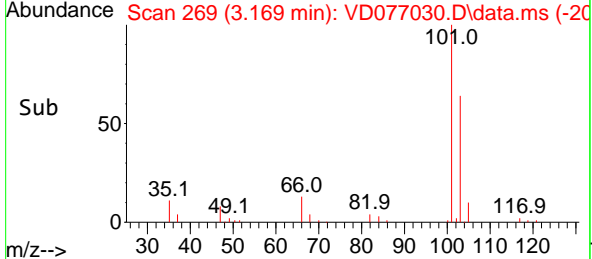
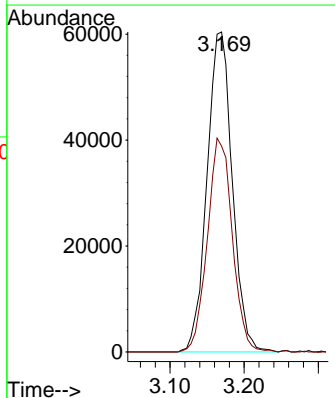
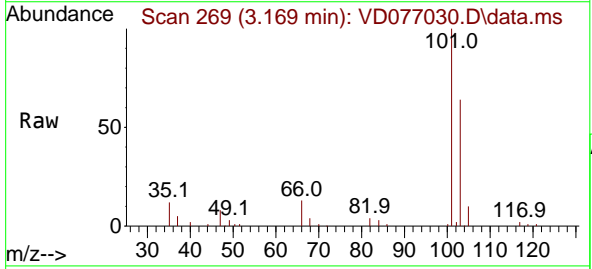
Instrument : MSVOA\_D  
 ClientSampleId : DCHW4MSD

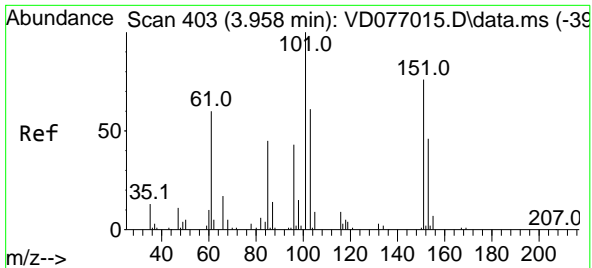
Tgt Ion: 64 Resp: 119057  
 Ion Ratio Lower Upper  
 64 100  
 66 30.7 22.1 41.1



#9  
 Trichlorofluoromethane  
 Concen: 23.726 ug/L  
 RT: 3.169 min Scan# 269  
 Delta R.T. 0.000 min  
 Lab File: VD077030.D  
 Acq: 25 Aug 2023 22:01

Tgt Ion:101 Resp: 143168  
 Ion Ratio Lower Upper  
 101 100  
 103 66.0 51.8 77.6

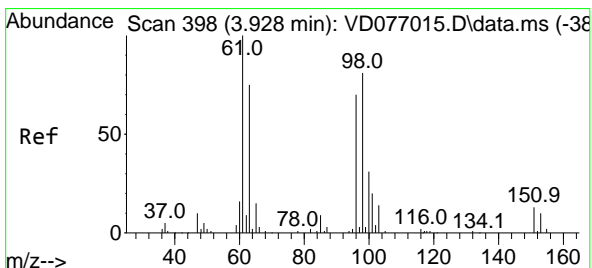
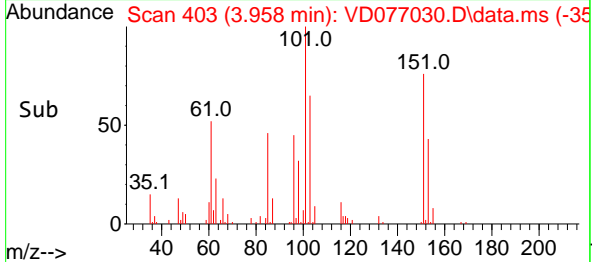
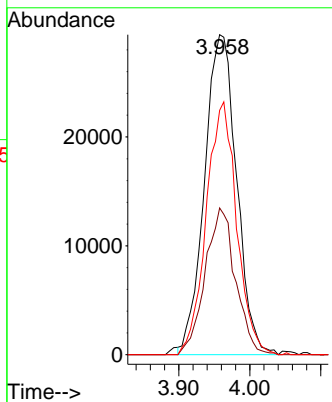
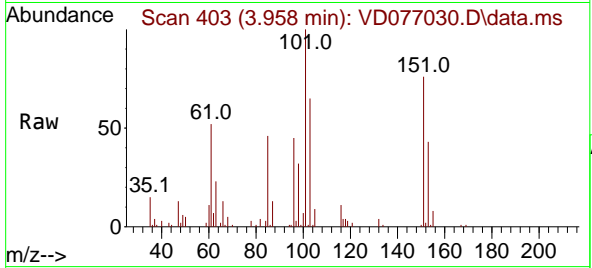




#10  
 1,1,2-Trichloro-1,2,2-trifluoroethane  
 Concen: 23.496 ug/L  
 RT: 3.958 min Scan# 40  
 Delta R.T. 0.000 min  
 Lab File: VD077030.D  
 Acq: 25 Aug 2023 22:01

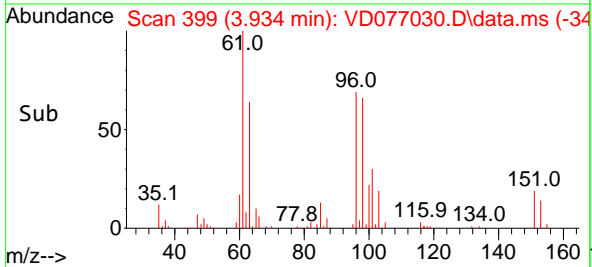
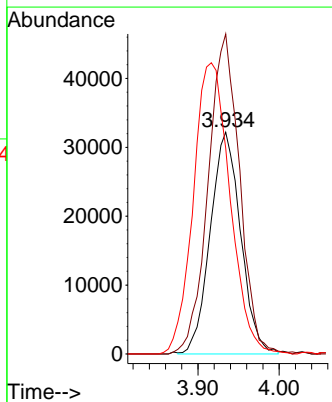
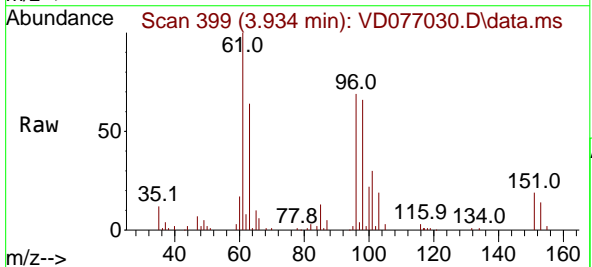
Instrument :  
 MSVOA\_D  
 ClientSampleId :  
 DCHW4MSD

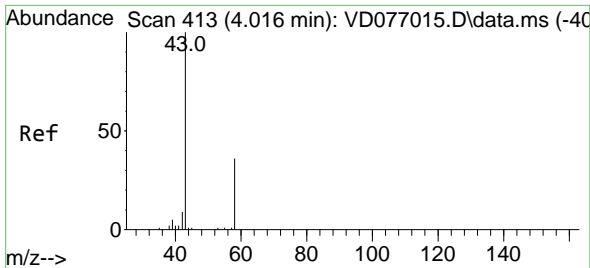
Tgt Ion	Resp	Lower	Upper
101	92383		
85	43.3	35.5	53.3
151	74.7	58.6	87.8



#12  
 1,1-Dichloroethene  
 Concen: 23.974 ug/L  
 RT: 3.934 min Scan# 399  
 Delta R.T. 0.006 min  
 Lab File: VD077030.D  
 Acq: 25 Aug 2023 22:01

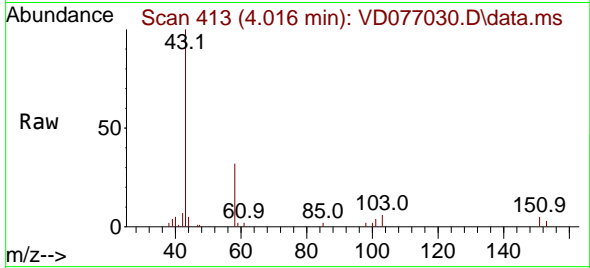
Tgt Ion	Resp	Lower	Upper
96	83585		
61	144.3	113.0	209.8
63	92.8	83.6	155.2



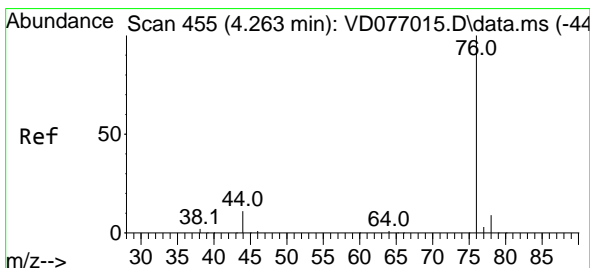
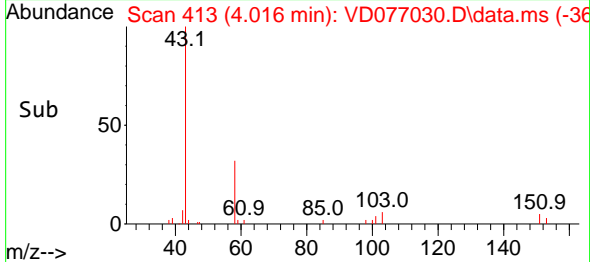
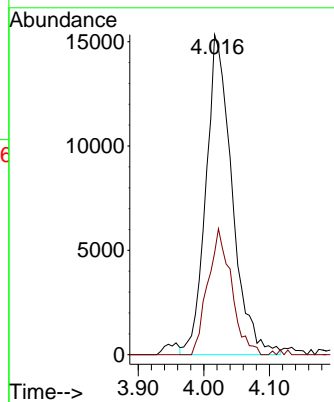


#13  
 Acetone  
 Concen: 39.687 ug/L  
 RT: 4.016 min Scan# 413  
 Delta R.T. 0.000 min  
 Lab File: VD077030.D  
 Acq: 25 Aug 2023 22:01

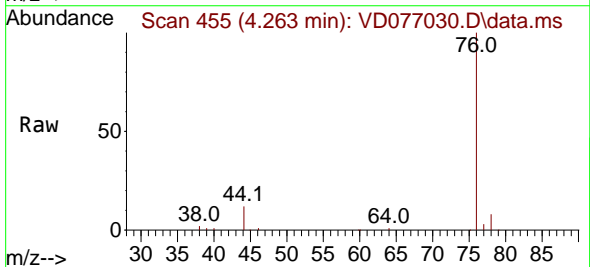
Instrument : MSVOA\_D  
 ClientSampleId : DCHW4MSD



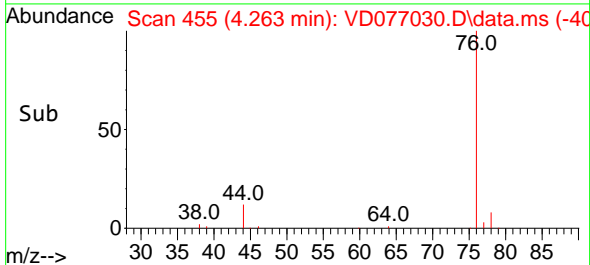
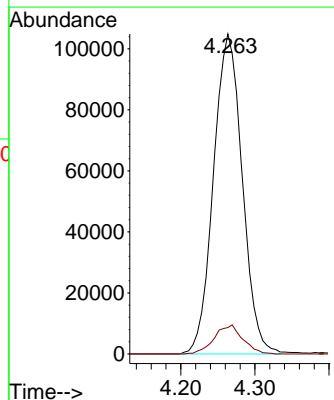
Tgt Ion: 43 Resp: 42466  
 Ion Ratio Lower Upper  
 43 100  
 58 35.4 0.0 67.4



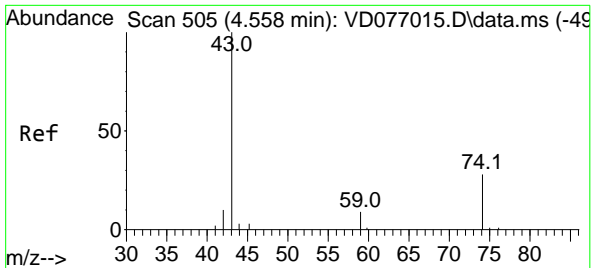
#14  
 Carbon disulfide  
 Concen: 23.361 ug/L  
 RT: 4.263 min Scan# 455  
 Delta R.T. 0.000 min  
 Lab File: VD077030.D  
 Acq: 25 Aug 2023 22:01



Tgt Ion: 76 Resp: 282687  
 Ion Ratio Lower Upper  
 76 100  
 78 8.3 7.0 10.4

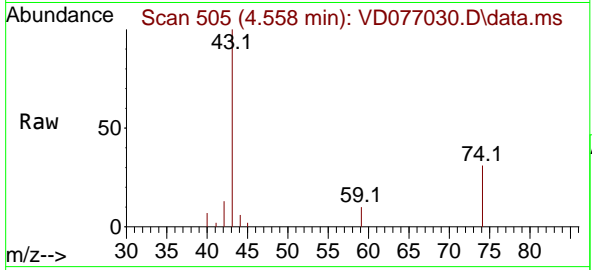




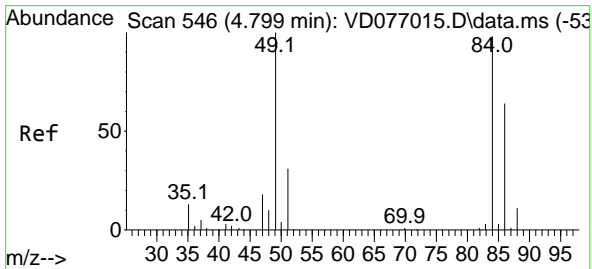
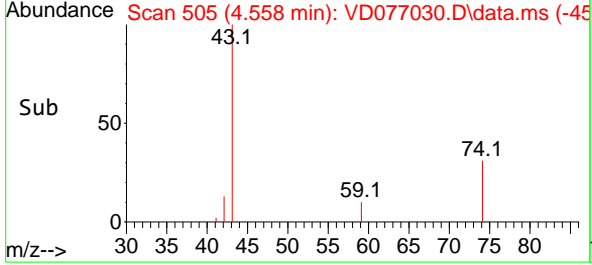
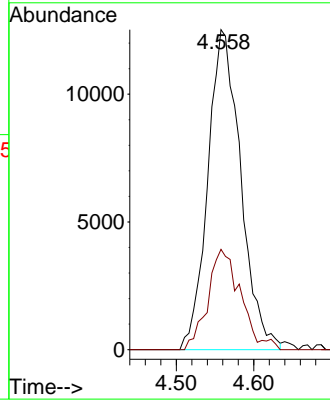


#15  
 Methyl Acetate  
 Concen: 20.411 ug/L  
 RT: 4.558 min Scan# 505  
 Delta R.T. 0.000 min  
 Lab File: VD077030.D  
 Acq: 25 Aug 2023 22:01

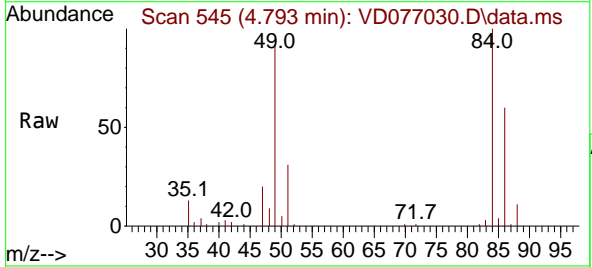
Instrument : MSVOA\_D  
 ClientSampleId : DCHW4MSD



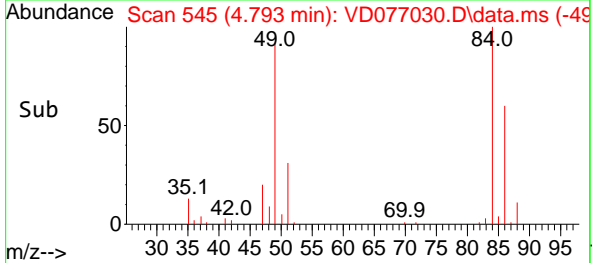
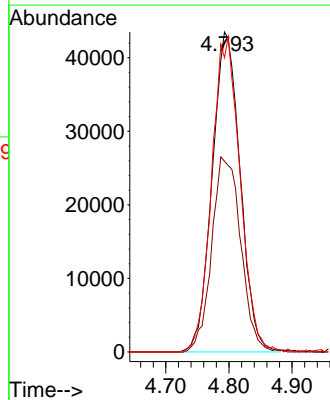
Tgt Ion: 43 Resp: 36915  
 Ion Ratio Lower Upper  
 43 100  
 74 30.0 18.2 27.2#

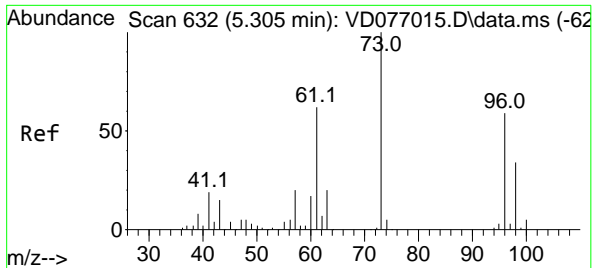


#16  
 Methylene chloride  
 Concen: 26.977 ug/L  
 RT: 4.793 min Scan# 545  
 Delta R.T. -0.006 min  
 Lab File: VD077030.D  
 Acq: 25 Aug 2023 22:01



Tgt Ion: 84 Resp: 134115  
 Ion Ratio Lower Upper  
 84 100  
 86 59.6 45.1 83.9  
 49 91.9 97.2 180.6#



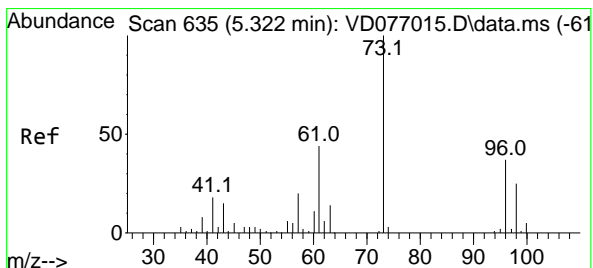
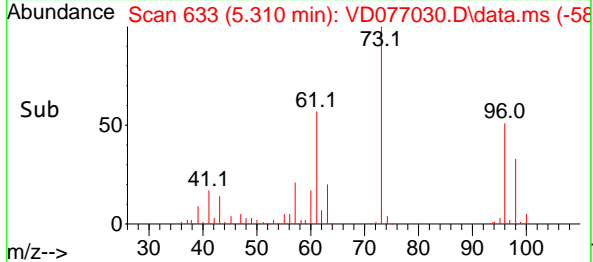
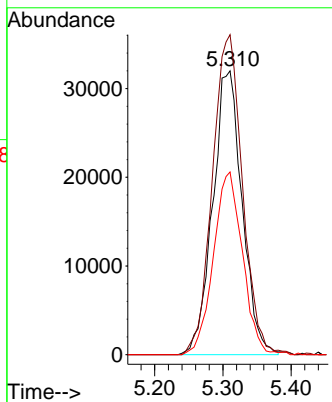
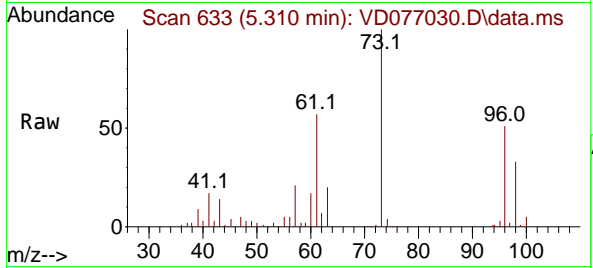


#17  
 trans-1,2-Dichloroethene  
 Concen: 24.340 ug/L  
 RT: 5.310 min Scan# 611  
 Delta R.T. 0.006 min  
 Lab File: VD077030.D  
 Acq: 25 Aug 2023 22:01

Instrument : MSVOA\_D  
 ClientSampleId : DCHW4MSD

Tgt Ion: 96 Resp: 96087

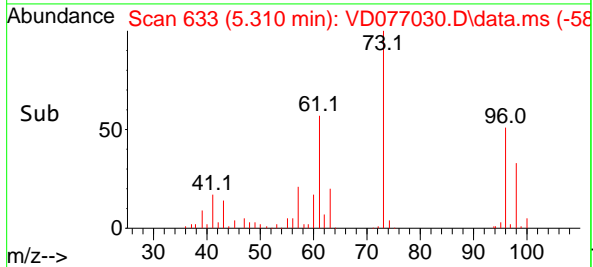
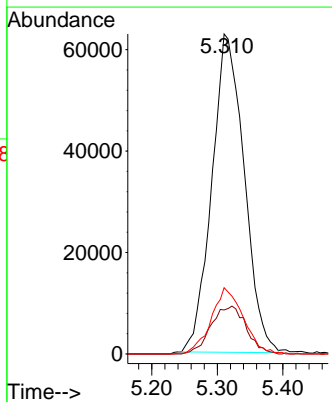
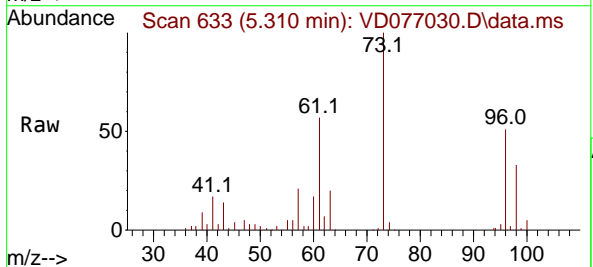
Ion	Ratio	Lower	Upper
96	100		
61	112.8	94.5	175.5
98	64.4	46.0	85.4

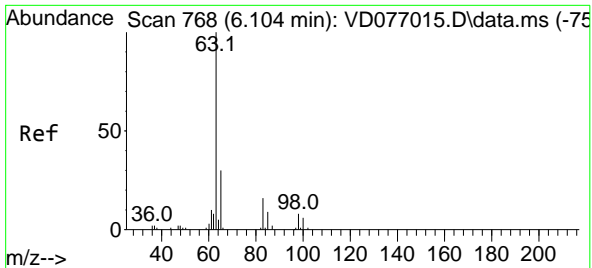


#18  
 Methyl tert-butyl Ether  
 Concen: 24.627 ug/L  
 RT: 5.310 min Scan# 633  
 Delta R.T. -0.012 min  
 Lab File: VD077030.D  
 Acq: 25 Aug 2023 22:01

Tgt Ion: 73 Resp: 214785

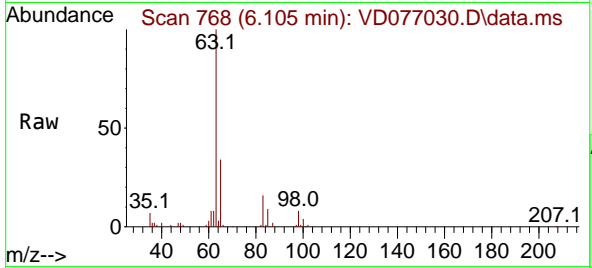
Ion	Ratio	Lower	Upper
73	100		
43	7.2	7.2	10.8#
57	20.2	18.6	28.0





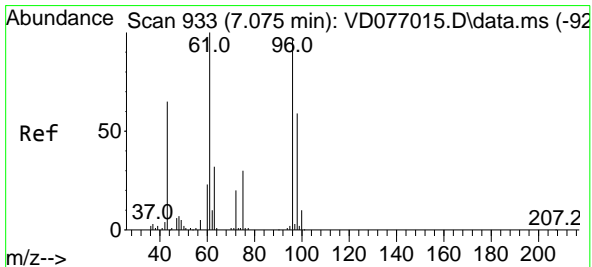
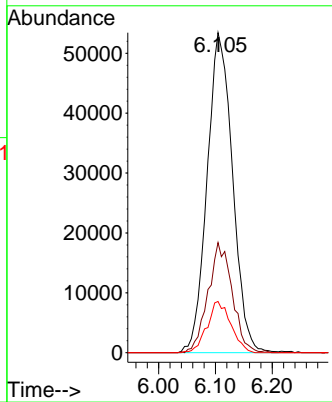
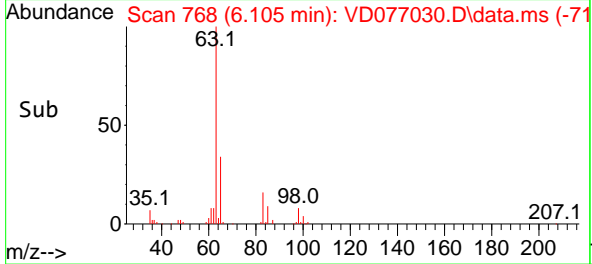
#19  
 1,1-Dichloroethane  
 Concen: 25.212 ug/L  
 RT: 6.105 min Scan# 701  
 Delta R.T. 0.000 min  
 Lab File: VD077030.D  
 Acq: 25 Aug 2023 22:01

Instrument : MSVOA\_D  
 ClientSampleId : DCHW4MSD

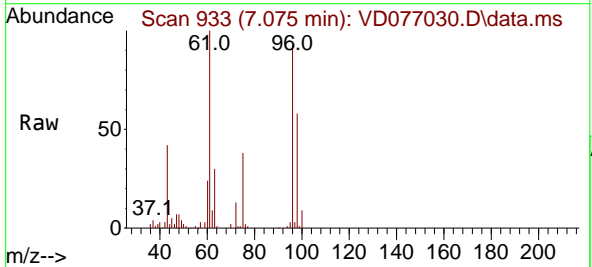


Tgt Ion: 63 Resp: 166182

Ion	Ratio	Lower	Upper
63	100		
65	34.4	20.8	38.6
83	16.0	8.9	16.5

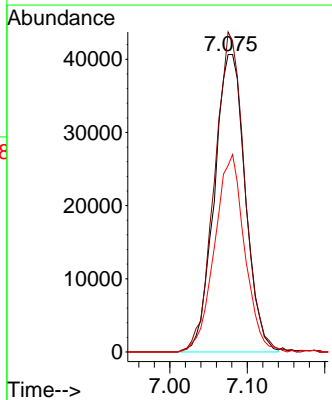
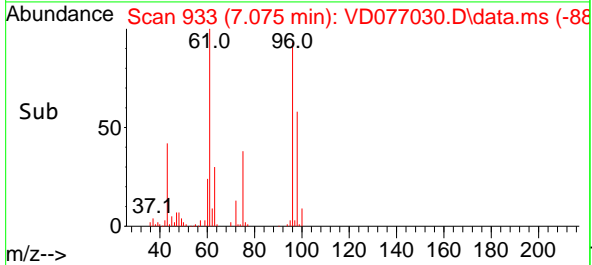


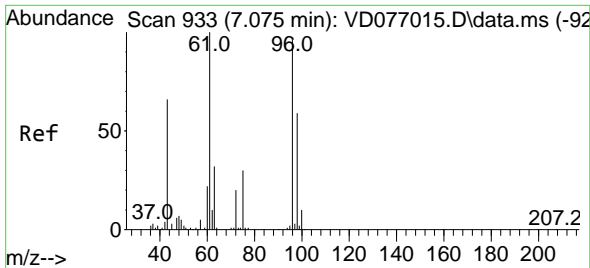
#20  
 cis-1,2-Dichloroethene  
 Concen: 25.627 ug/L  
 RT: 7.075 min Scan# 933  
 Delta R.T. 0.000 min  
 Lab File: VD077030.D  
 Acq: 25 Aug 2023 22:01



Tgt Ion: 96 Resp: 112933

Ion	Ratio	Lower	Upper
96	100		
61	107.6	86.0	159.6
98	62.7	42.2	78.4

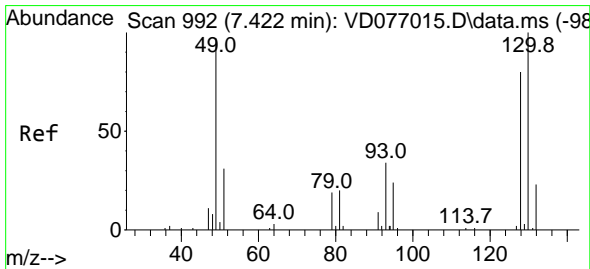
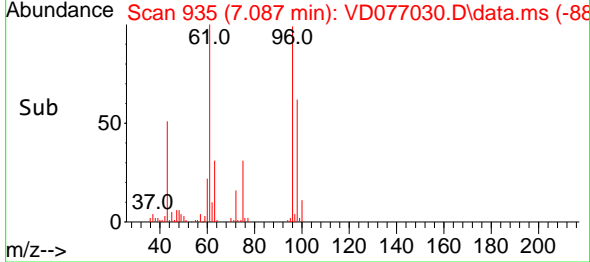
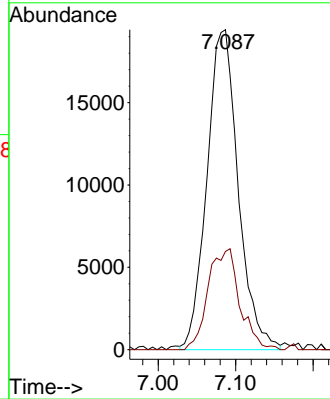
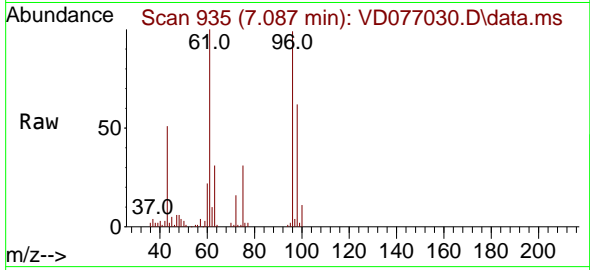




#22  
 2-Butanone  
 Concen: 36.492 ug/L  
 RT: 7.087 min Scan# 913  
 Delta R.T. 0.012 min  
 Lab File: VD077030.D  
 Acq: 25 Aug 2023 22:01

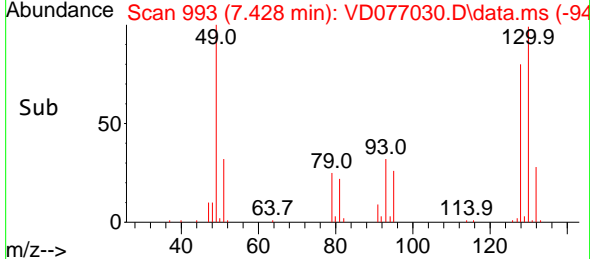
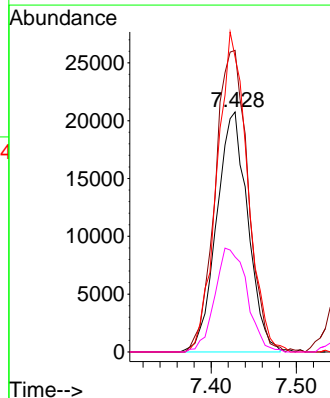
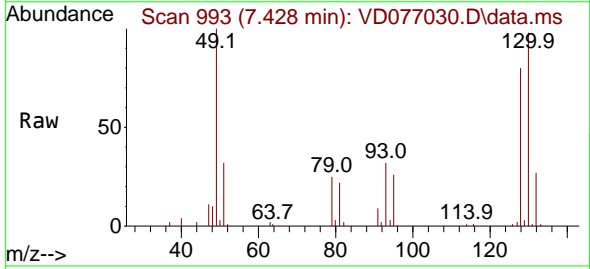
Instrument : MSVOA\_D  
 ClientSampleId : DCHW4MSD

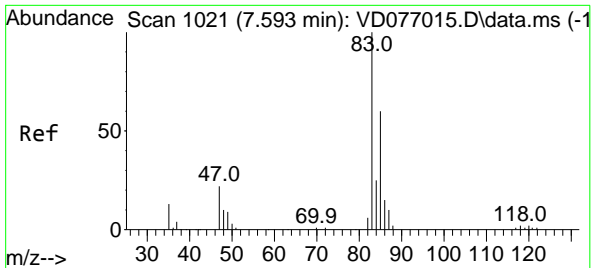
Tgt Ion: 43 Resp: 54632  
 Ion Ratio Lower Upper  
 43 100  
 72 15.2 12.9 38.7



#23  
 Bromochloromethane  
 Concen: 24.742 ug/L  
 RT: 7.428 min Scan# 993  
 Delta R.T. 0.006 min  
 Lab File: VD077030.D  
 Acq: 25 Aug 2023 22:01

Tgt Ion:128 Resp: 52884  
 Ion Ratio Lower Upper  
 128 100  
 49 125.7 124.7 231.7  
 130 122.9 80.0 148.6  
 51 39.6 42.7 64.1#

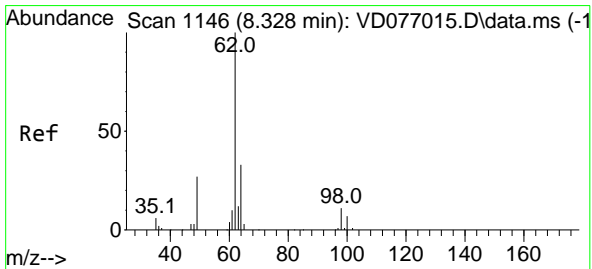
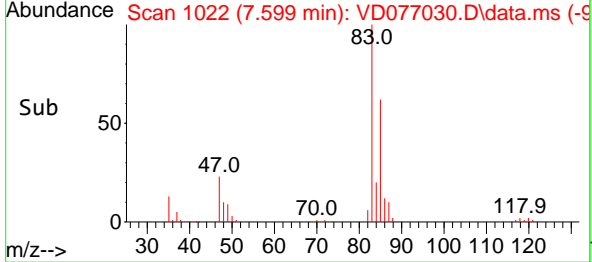
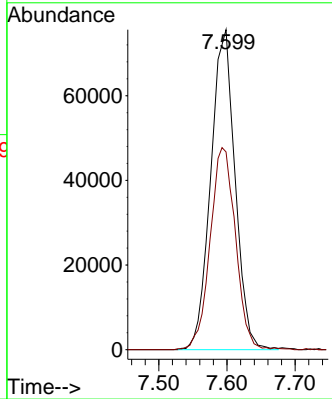
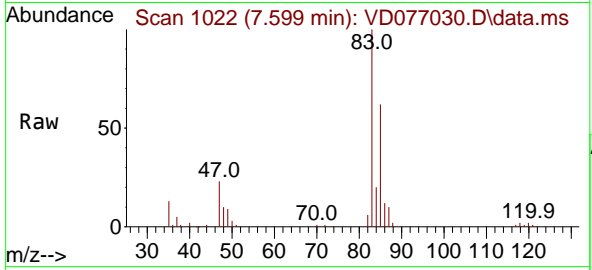




#25  
 Chloroform  
 Concen: 26.040 ug/L  
 RT: 7.599 min Scan# 1021  
 Delta R.T. 0.006 min  
 Lab File: VD077030.D  
 Acq: 25 Aug 2023 22:01

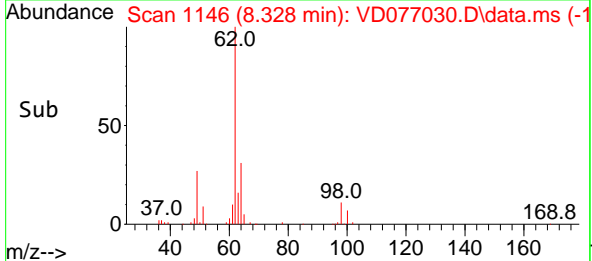
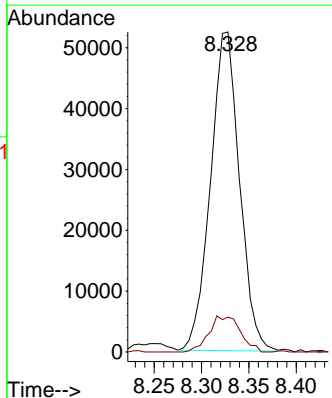
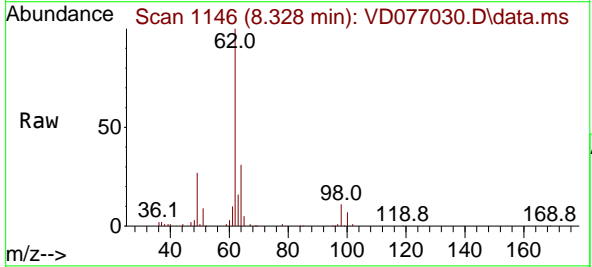
Instrument : MSVOA\_D  
 ClientSampleId : DCHW4MSD

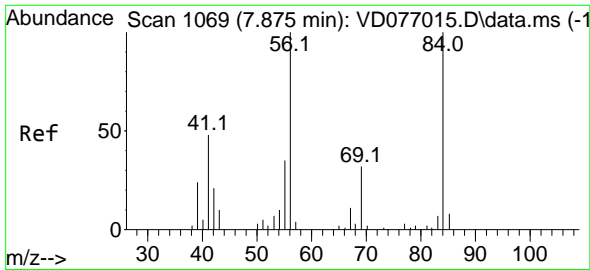
Tgt Ion: 83 Resp: 187982  
 Ion Ratio Lower Upper  
 83 100  
 85 61.8 45.4 84.4



#27  
 1,2-Dichloroethane  
 Concen: 24.699 ug/L  
 RT: 8.328 min Scan# 1146  
 Delta R.T. 0.000 min  
 Lab File: VD077030.D  
 Acq: 25 Aug 2023 22:01

Tgt Ion: 62 Resp: 111749  
 Ion Ratio Lower Upper  
 62 100  
 98 10.9 8.7 13.1



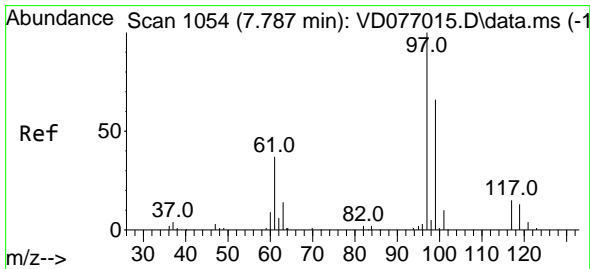
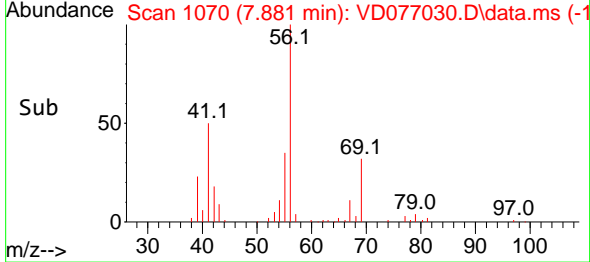
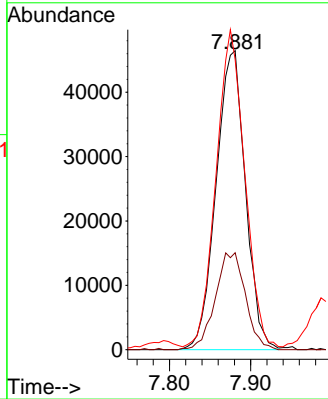
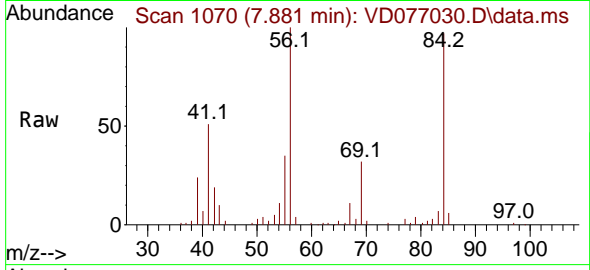


#29  
 Cyclohexane  
 Concen: 21.800 ug/L  
 RT: 7.881 min Scan# 1069  
 Delta R.T. 0.006 min  
 Lab File: VD077030.D  
 Acq: 25 Aug 2023 22:01

Instrument : MSVOA\_D  
 ClientSampleId : DCHW4MSD

Tgt Ion: 56 Resp: 116683

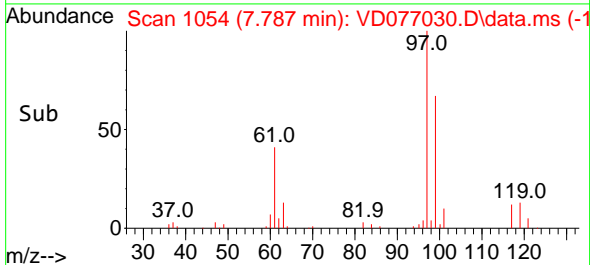
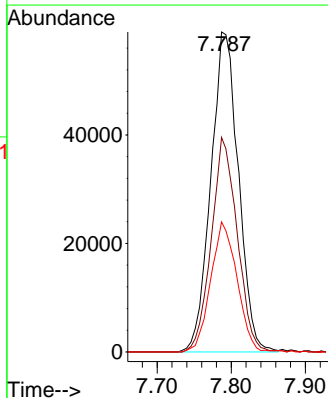
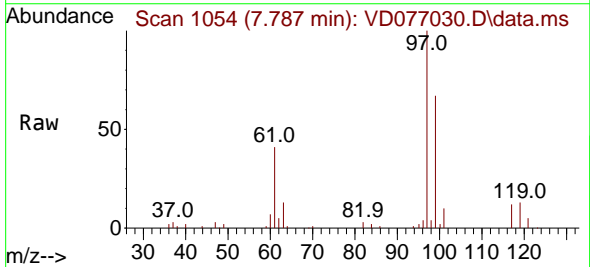
Ion	Ratio	Lower	Upper
56	100		
69	33.3	23.4	35.0
84	105.1	66.3	99.5

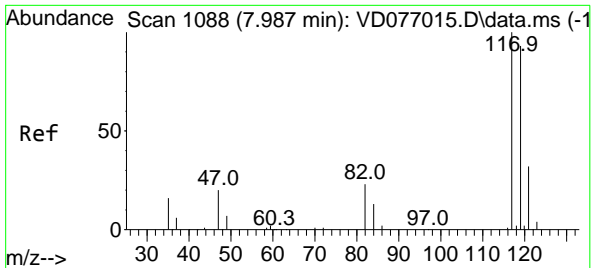


#30  
 1,1,1-Trichloroethane  
 Concen: 25.287 ug/L  
 RT: 7.787 min Scan# 1054  
 Delta R.T. 0.000 min  
 Lab File: VD077030.D  
 Acq: 25 Aug 2023 22:01

Tgt Ion: 97 Resp: 152346

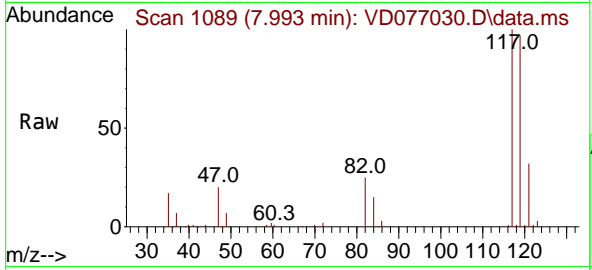
Ion	Ratio	Lower	Upper
97	100		
99	63.0	51.0	76.6
61	38.6	36.4	54.6



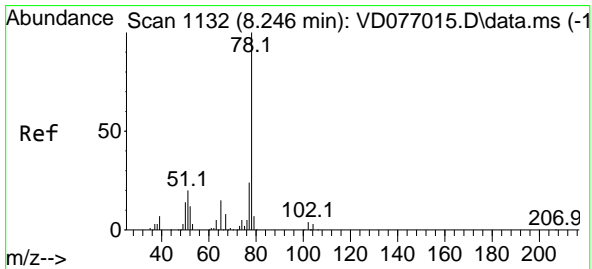
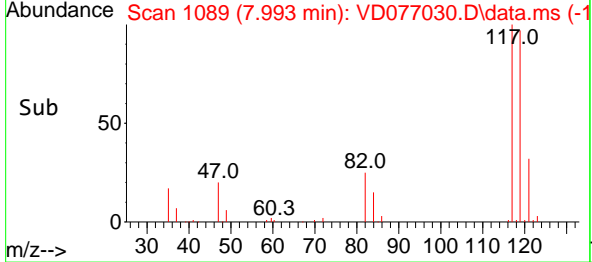
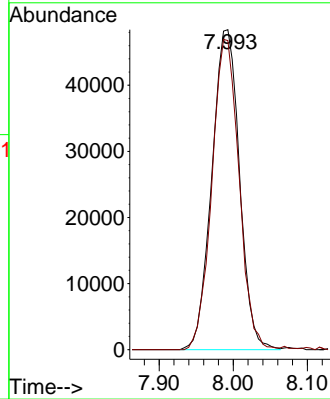


#31  
 Carbon tetrachloride  
 Concen: 25.412 ug/L  
 RT: 7.993 min Scan# 1089  
 Delta R.T. 0.006 min  
 Lab File: VD077030.D  
 Acq: 25 Aug 2023 22:01

Instrument : MSVOA\_D  
 ClientSampleId : VD077030.D  
 DCHW4MSD

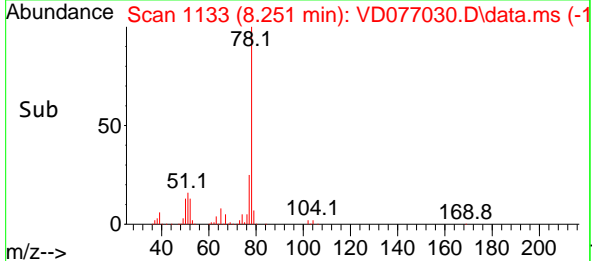
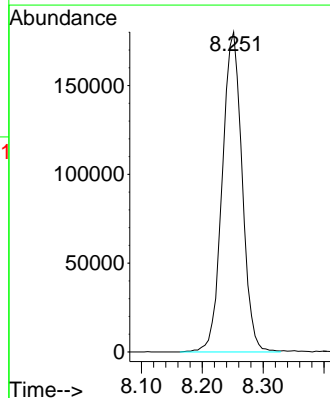
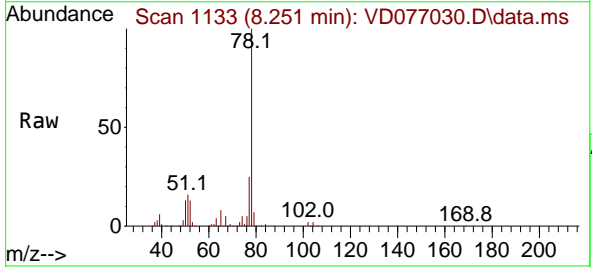


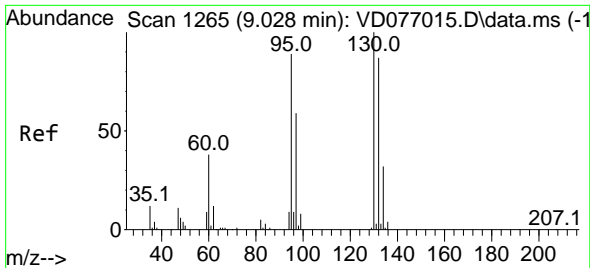
Tgt Ion:117 Resp: 125297  
 Ion Ratio Lower Upper  
 117 100  
 119 95.3 77.8 116.6



#33  
 Benzene  
 Concen: 25.623 ug/L  
 RT: 8.251 min Scan# 1133  
 Delta R.T. 0.006 min  
 Lab File: VD077030.D  
 Acq: 25 Aug 2023 22:01

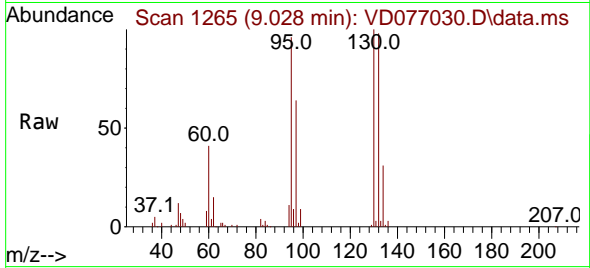
Tgt Ion: 78 Resp: 408375



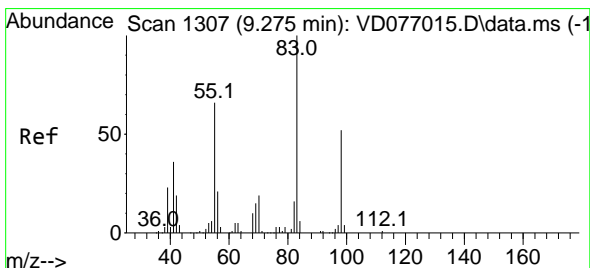
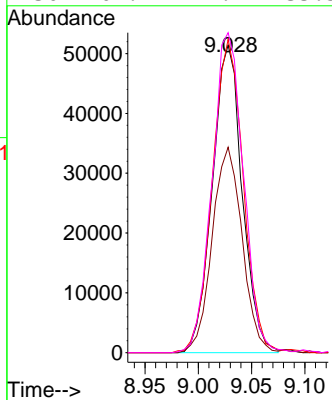
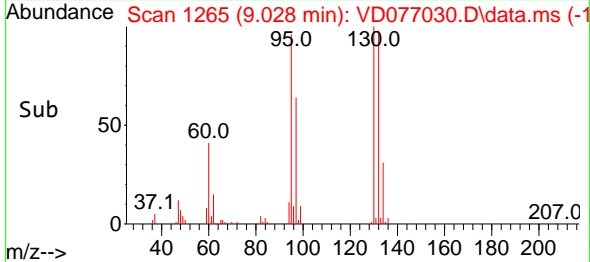


#34  
 Trichloroethene  
 Concen: 24.103 ug/L  
 RT: 9.028 min Scan# 1265  
 Delta R.T. 0.000 min  
 Lab File: VD077030.D  
 Acq: 25 Aug 2023 22:01

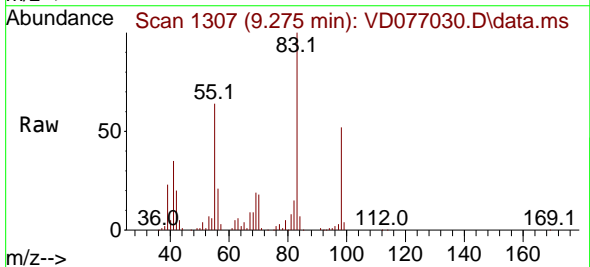
Instrument : MSVOA\_D  
 ClientSampleId : VD077030.D  
 DCHW4MSD



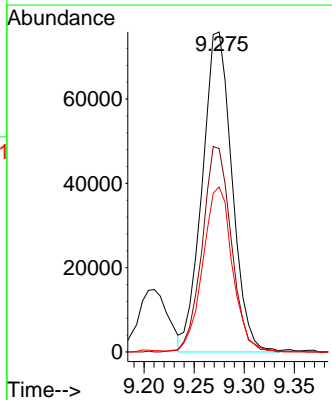
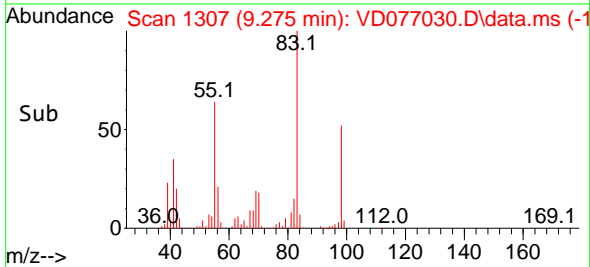
Tgt Ion: 95 Resp: 100041  
 Ion Ratio Lower Upper  
 95 100  
 97 66.8 43.1 80.1  
 132 101.9 71.8 133.4  
 130 104.1 71.9 133.5



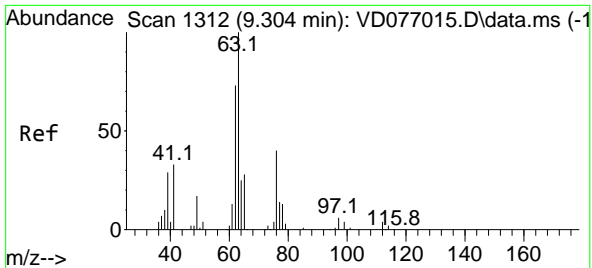
#35  
 Methylcyclohexane  
 Concen: 23.202 ug/L  
 RT: 9.275 min Scan# 1307  
 Delta R.T. 0.000 min  
 Lab File: VD077030.D  
 Acq: 25 Aug 2023 22:01



Tgt Ion: 83 Resp: 157046  
 Ion Ratio Lower Upper  
 83 100  
 55 62.2 59.8 89.6  
 98 51.2 37.8 56.6







#37  
 1,2-Dichloropropane  
 Concen: 25.353 ug/L  
 RT: 9.304 min Scan# 111  
 Delta R.T. 0.000 min  
 Lab File: VD077030.D  
 Acq: 25 Aug 2023 22:01

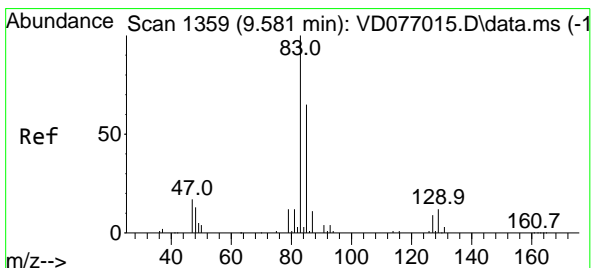
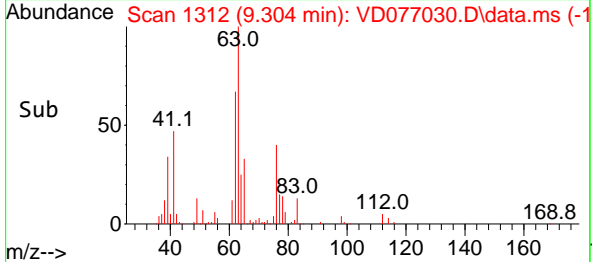
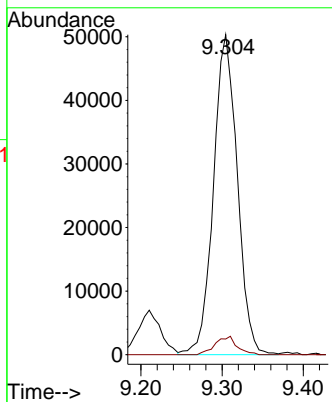
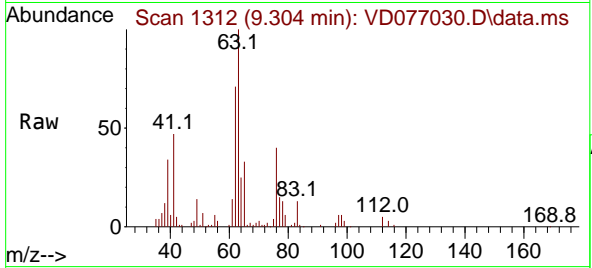
Instrument :

MSVOA\_D

ClientSampleId :

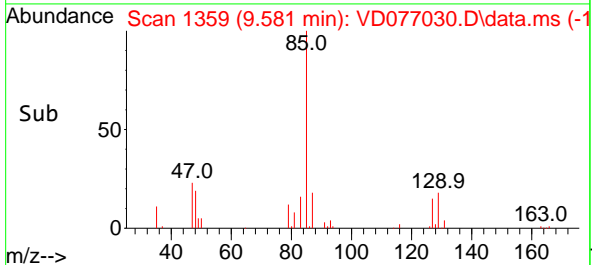
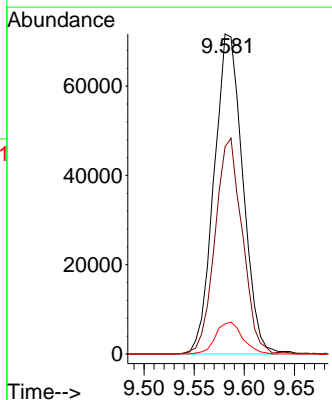
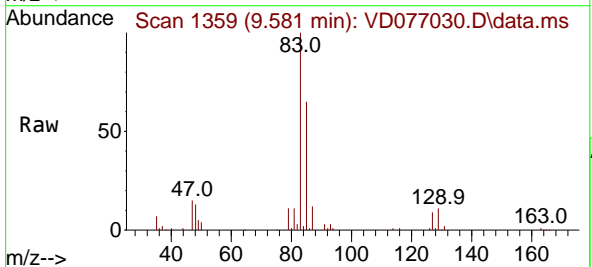
DCHW4MSD

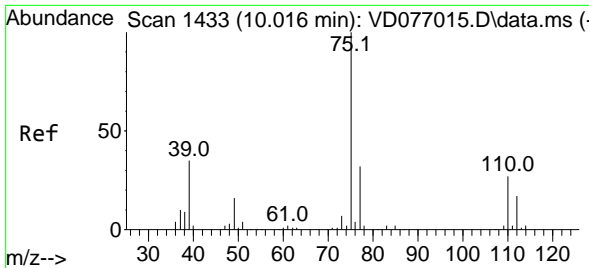
Tgt Ion: 63 Resp: 102646  
 Ion Ratio Lower Upper  
 63 100  
 112 5.2 3.1 4.7#



#38  
 Bromodichloromethane  
 Concen: 25.609 ug/L  
 RT: 9.581 min Scan# 1359  
 Delta R.T. 0.000 min  
 Lab File: VD077030.D  
 Acq: 25 Aug 2023 22:01

Tgt Ion: 83 Resp: 142777  
 Ion Ratio Lower Upper  
 83 100  
 85 64.8 43.9 81.5  
 127 9.4 6.6 9.8

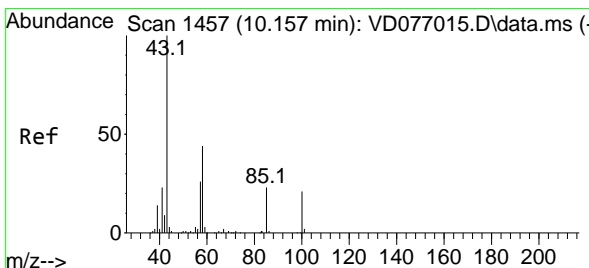
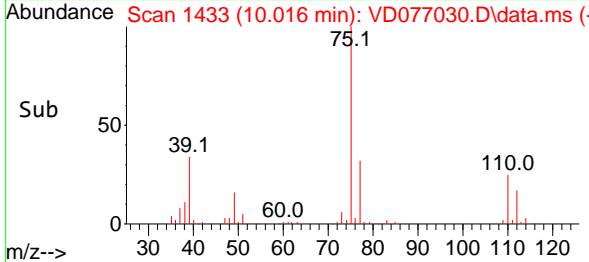
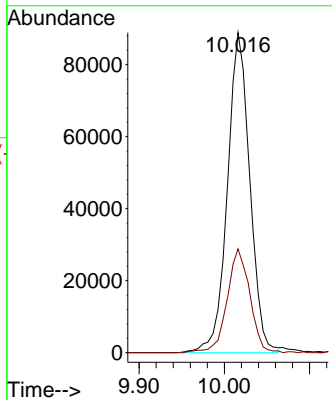
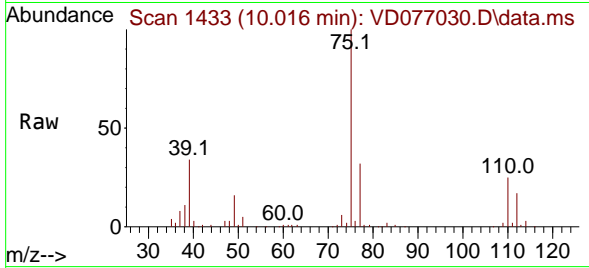




#39  
 cis-1,3-Dichloropropene  
 Concen: 24.883 ug/L  
 RT: 10.016 min Scan# 1433  
 Delta R.T. 0.000 min  
 Lab File: VD077030.D  
 Acq: 25 Aug 2023 22:01

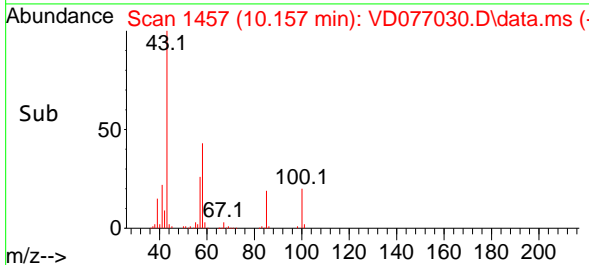
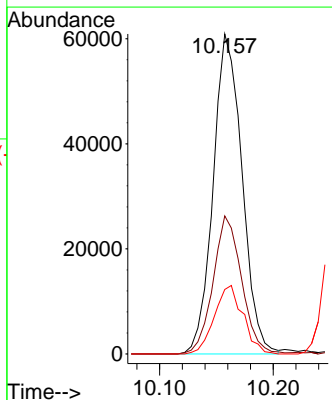
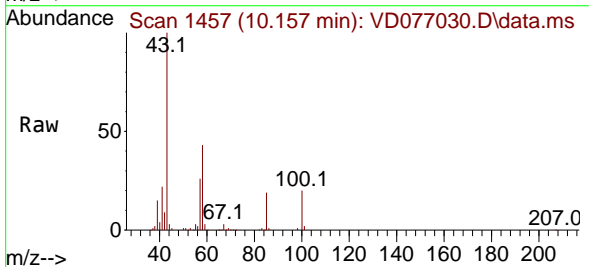
Instrument : MSVOA\_D  
 ClientSampleId : DCHW4MSD

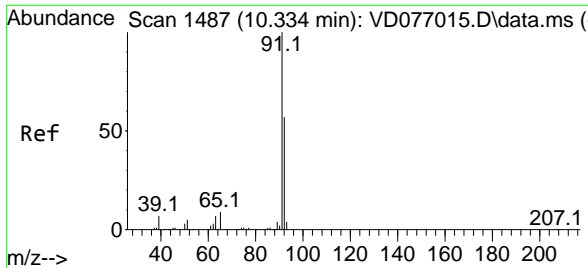
Tgt Ion: 75 Resp: 162589  
 Ion Ratio Lower Upper  
 75 100  
 77 32.5 22.7 42.3



#40  
 4-Methyl-2-pentanone  
 Concen: 42.231 ug/L  
 RT: 10.157 min Scan# 1457  
 Delta R.T. 0.000 min  
 Lab File: VD077030.D  
 Acq: 25 Aug 2023 22:01

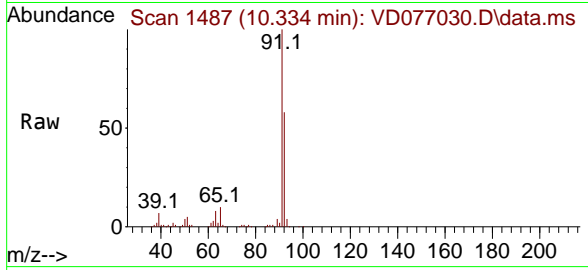
Tgt Ion: 43 Resp: 107727  
 Ion Ratio Lower Upper  
 43 100  
 58 42.6 30.7 46.1  
 100 21.2 11.0 16.4#



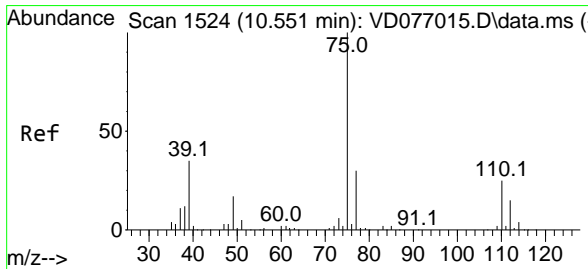
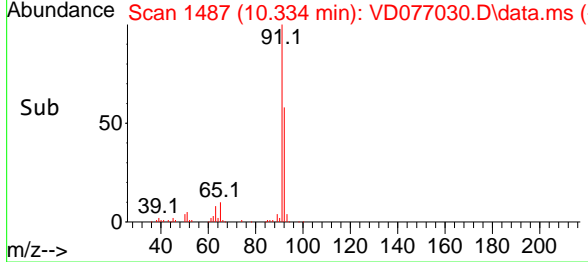
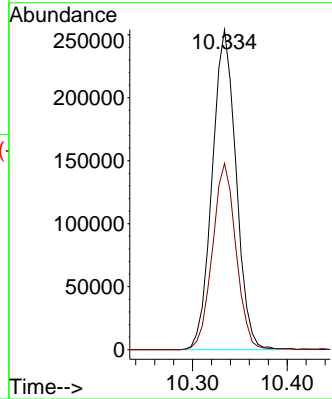


#42  
 Toluene  
 Concen: 25.649 ug/L  
 RT: 10.334 min Scan# 1487  
 Delta R.T. 0.000 min  
 Lab File: VD077030.D  
 Acq: 25 Aug 2023 22:01

Instrument : MSVOA\_D  
 ClientSampleId : DCHW4MSD

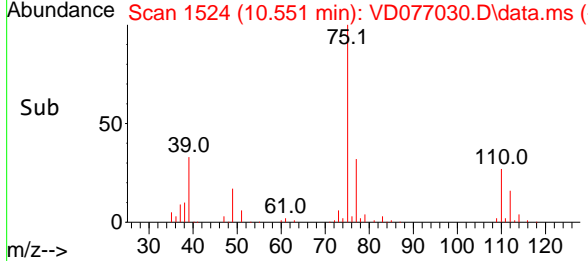
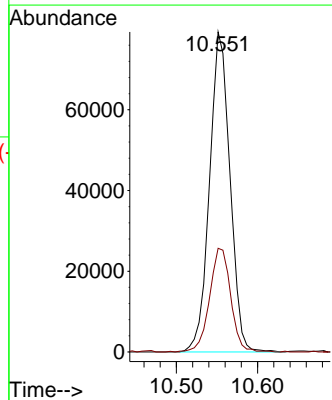
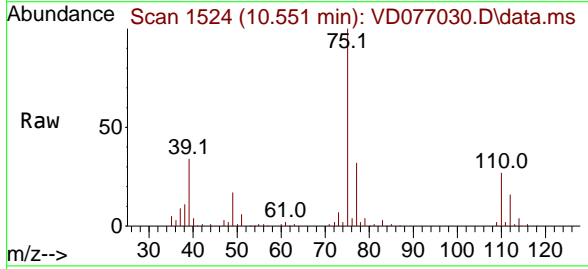


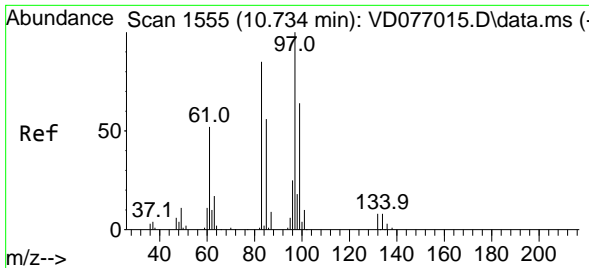
Tgt Ion: 91 Resp: 444506  
 Ion Ratio Lower Upper  
 91 100  
 92 58.2 39.3 73.1



#44  
 trans-1,3-Dichloropropene  
 Concen: 24.272 ug/L  
 RT: 10.551 min Scan# 1524  
 Delta R.T. 0.000 min  
 Lab File: VD077030.D  
 Acq: 25 Aug 2023 22:01

Tgt Ion: 75 Resp: 138606  
 Ion Ratio Lower Upper  
 75 100  
 77 32.4 22.5 41.7





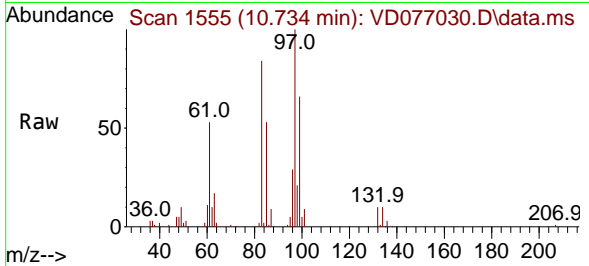
#45  
 1,1,2-Trichloroethane  
 Concen: 24.959 ug/L  
 RT: 10.734 min Scan# 1555  
 Delta R.T. 0.000 min  
 Lab File: VD077030.D  
 Acq: 25 Aug 2023 22:01

Instrument :

MSVOA\_D

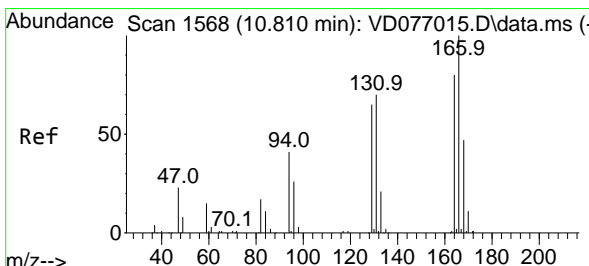
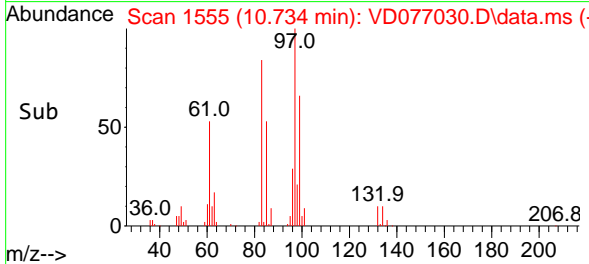
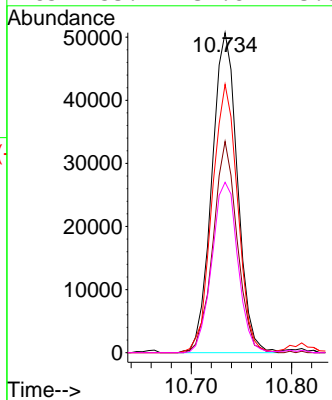
ClientSampleId :

DCHW4MSD



Tgt Ion: 97 Resp: 89806

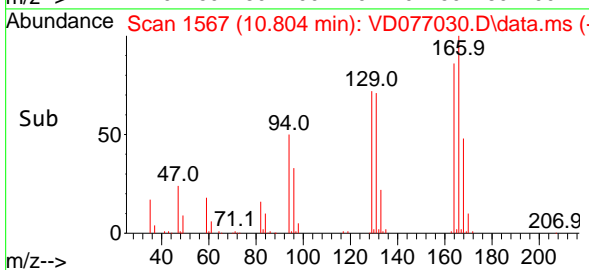
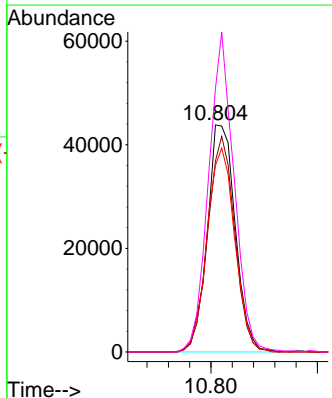
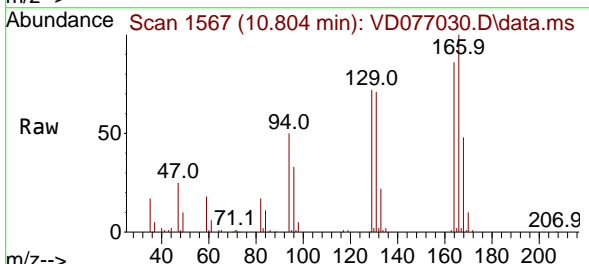
Ion	Ratio	Lower	Upper
97	100		
99	66.0	41.9	77.9
83	83.8	59.2	110.0
85	53.2	39.8	73.8

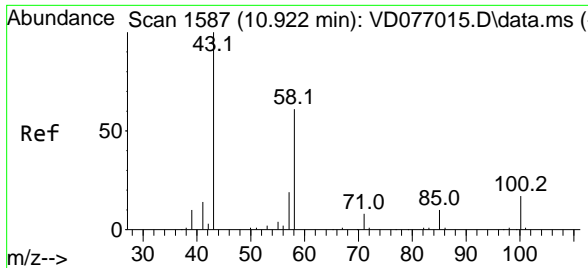


#46  
 Tetrachloroethene  
 Concen: 25.542 ug/L  
 RT: 10.804 min Scan# 1567  
 Delta R.T. -0.006 min  
 Lab File: VD077030.D  
 Acq: 25 Aug 2023 22:01

Tgt Ion: 164 Resp: 79899

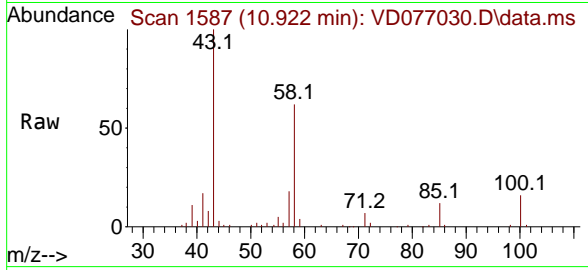
Ion	Ratio	Lower	Upper
164	100		
129	84.2	65.5	121.6
131	82.2	64.8	120.3
166	116.1	97.2	180.4





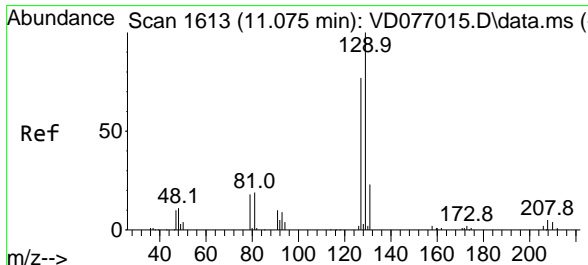
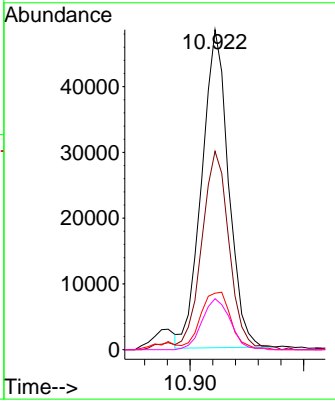
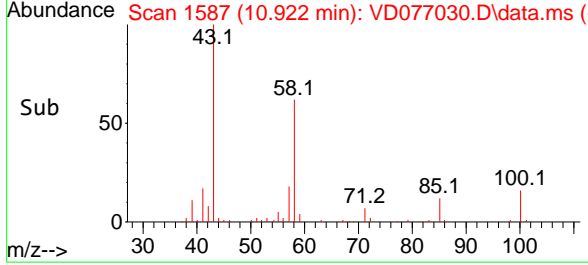
#48  
 2-Hexanone  
 Concen: 40.230 ug/L  
 RT: 10.922 min Scan# 1587  
 Delta R.T. 0.000 min  
 Lab File: VD077030.D  
 Acq: 25 Aug 2023 22:01

Instrument : MSVOA\_D  
 ClientSampleId : DCHW4MSD

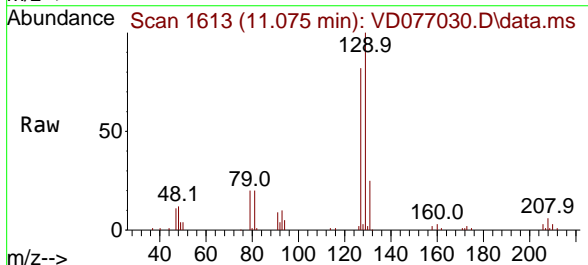


Tgt Ion: 43 Resp: 78919

Ion	Ratio	Lower	Upper
43	100		
58	63.3	42.9	64.3
57	20.3	13.7	20.5
100	17.0	9.4	14.0

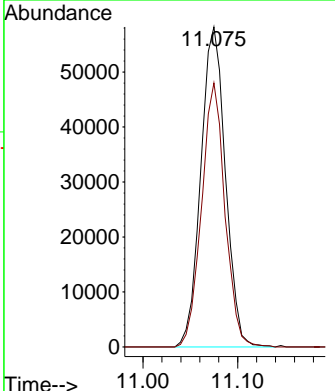
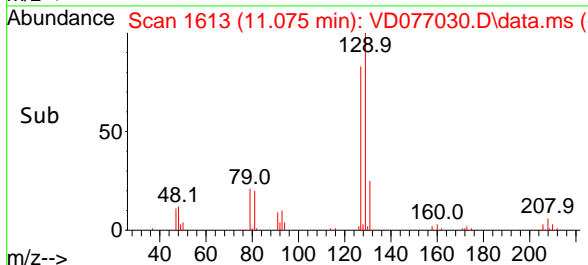


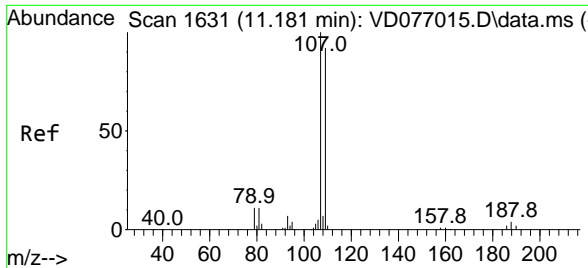
#49  
 Dibromochloromethane  
 Concen: 26.189 ug/L  
 RT: 11.075 min Scan# 1613  
 Delta R.T. 0.000 min  
 Lab File: VD077030.D  
 Acq: 25 Aug 2023 22:01



Tgt Ion: 129 Resp: 104832

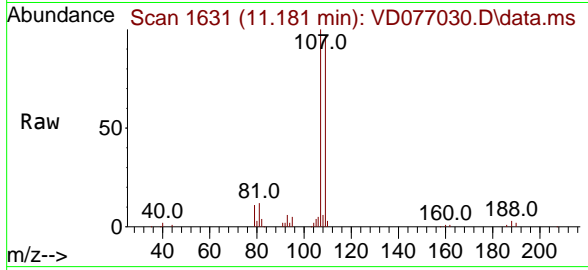
Ion	Ratio	Lower	Upper
129	100		
127	82.5	55.2	102.6





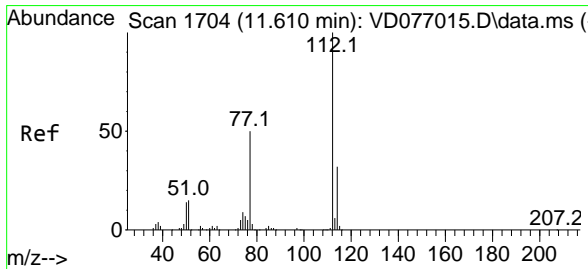
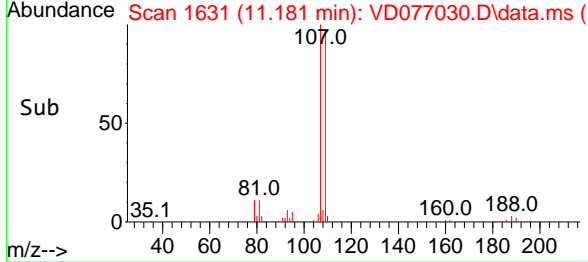
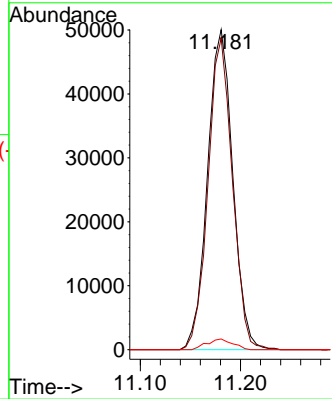
#50  
 1,2-Dibromoethane  
 Concen: 24.981 ug/L  
 RT: 11.181 min Scan# 1  
 Delta R.T. 0.000 min  
 Lab File: VD077030.D  
 Acq: 25 Aug 2023 22:01

Instrument :  
 MSVOA\_D  
 ClientSampleId :  
 DCHW4MSD



Tgt Ion:107 Resp: 87667

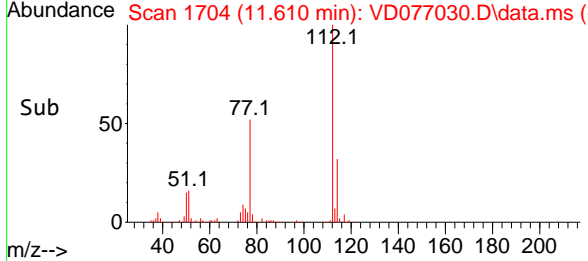
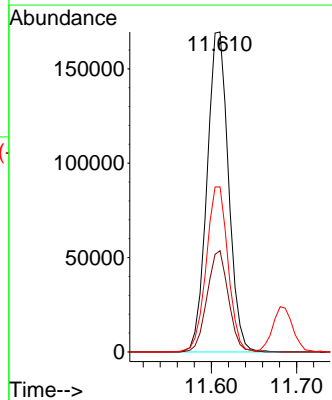
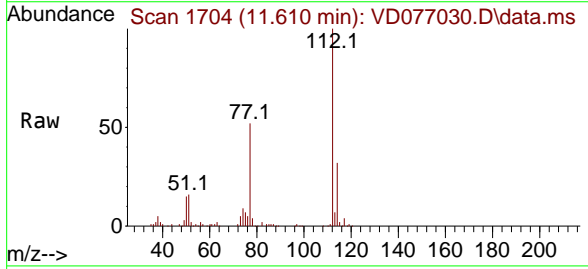
Ion	Ratio	Lower	Upper
107	100		
109	97.3	58.8	109.2
188	3.4	2.9	4.3

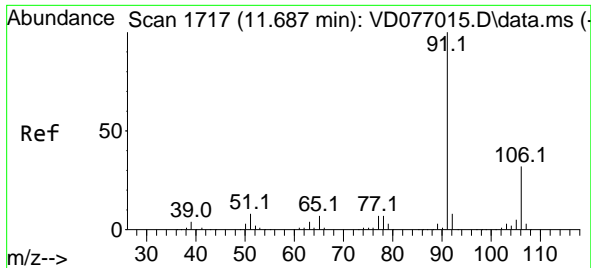


#51  
 Chlorobenzene  
 Concen: 26.288 ug/L  
 RT: 11.610 min Scan# 1704  
 Delta R.T. 0.000 min  
 Lab File: VD077030.D  
 Acq: 25 Aug 2023 22:01

Tgt Ion:112 Resp: 296827

Ion	Ratio	Lower	Upper
112	100		
114	31.7	21.5	39.9
77	51.6	43.4	65.2

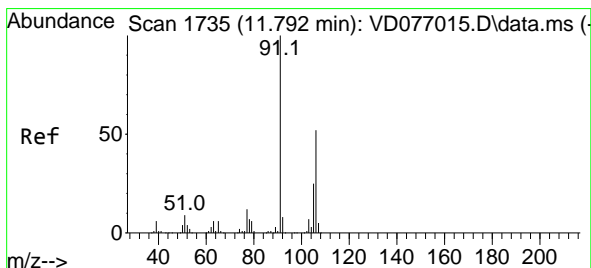
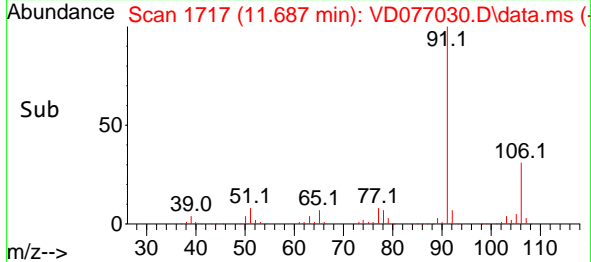
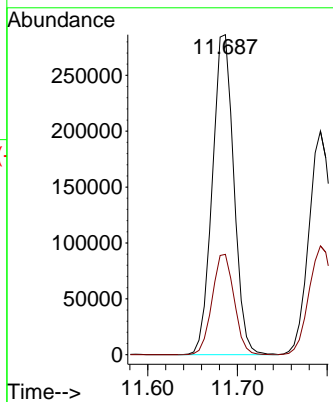
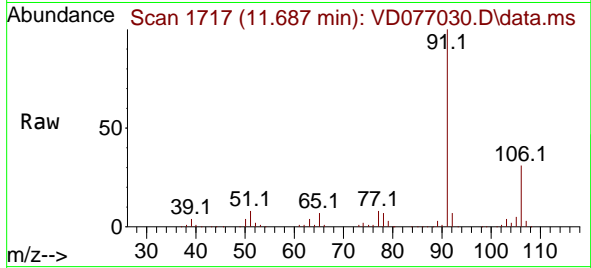




#52  
 Ethylbenzene  
 Concen: 25.807 ug/L  
 RT: 11.687 min Scan# 11  
 Delta R.T. 0.000 min  
 Lab File: VD077030.D  
 Acq: 25 Aug 2023 22:01

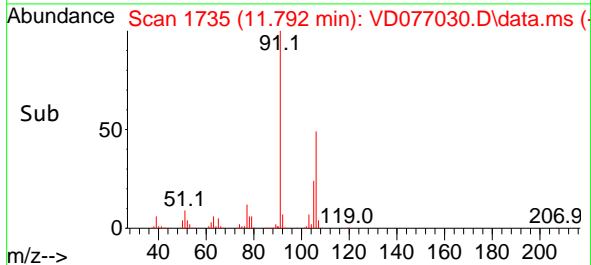
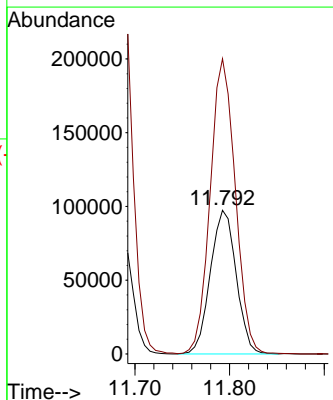
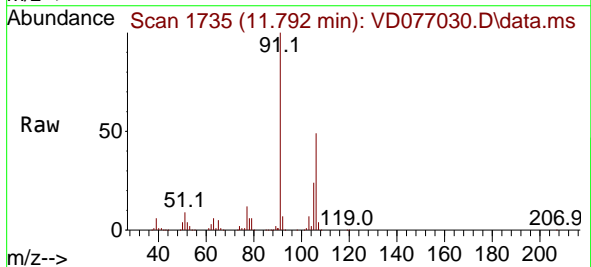
Instrument :  
 MSVOA\_D  
 ClientSampleId :  
 DCHW4MSD

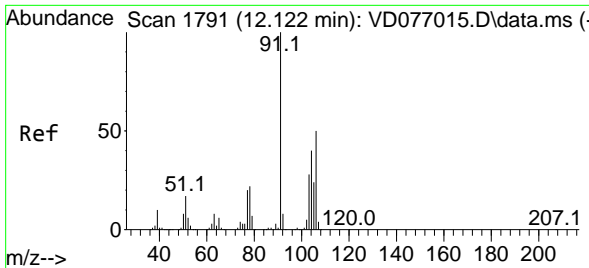
Tgt Ion: 91 Resp: 476578  
 Ion Ratio Lower Upper  
 91 100  
 106 31.4 22.4 41.6



#53  
 m,p-Xylene  
 Concen: 25.924 ug/L  
 RT: 11.792 min Scan# 1735  
 Delta R.T. 0.000 min  
 Lab File: VD077030.D  
 Acq: 25 Aug 2023 22:01

Tgt Ion: 106 Resp: 184723  
 Ion Ratio Lower Upper  
 106 100  
 91 205.5 141.5 262.9

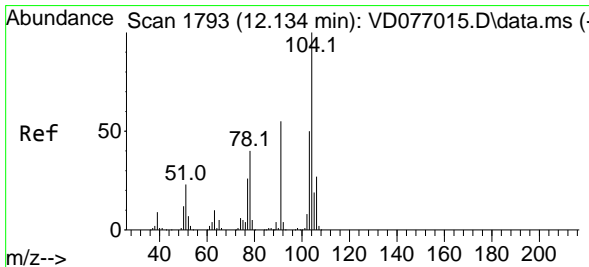
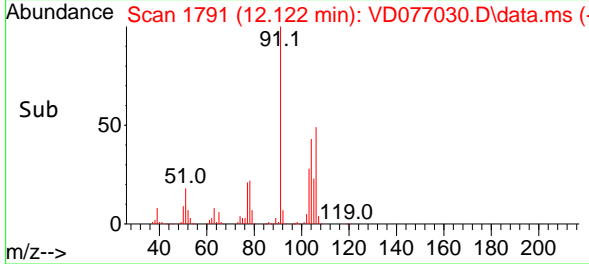
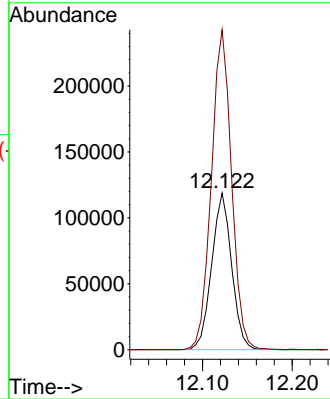
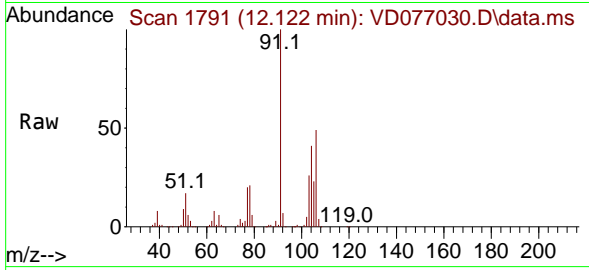




#54  
 o-Xylene  
 Concen: 26.759 ug/L  
 RT: 12.122 min Scan# 1791  
 Delta R.T. 0.000 min  
 Lab File: VD077030.D  
 Acq: 25 Aug 2023 22:01

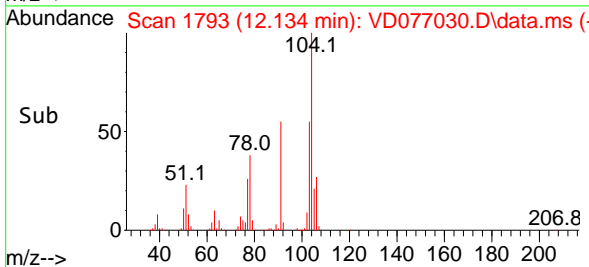
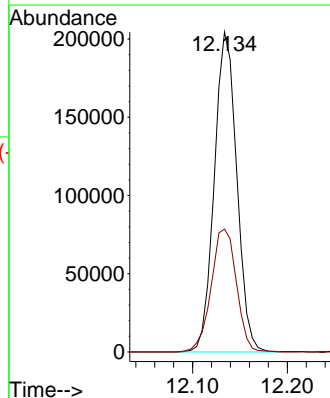
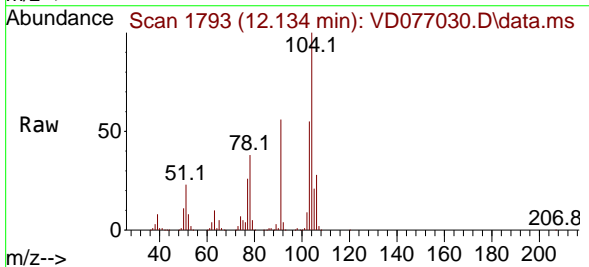
Instrument : MSVOA\_D  
 ClientSampleId : DCHW4MSD

Tgt Ion:106 Resp: 183388  
 Ion Ratio Lower Upper  
 106 100  
 91 204.2 142.2 264.2

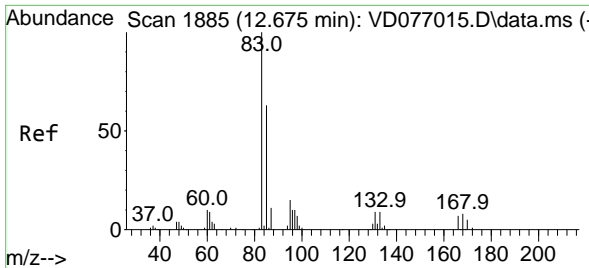


#55  
 Styrene  
 Concen: 27.186 ug/L  
 RT: 12.134 min Scan# 1793  
 Delta R.T. 0.000 min  
 Lab File: VD077030.D  
 Acq: 25 Aug 2023 22:01

Tgt Ion:104 Resp: 336870  
 Ion Ratio Lower Upper  
 104 100  
 78 38.4 31.3 58.1

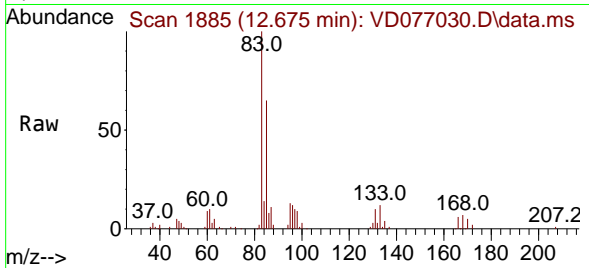




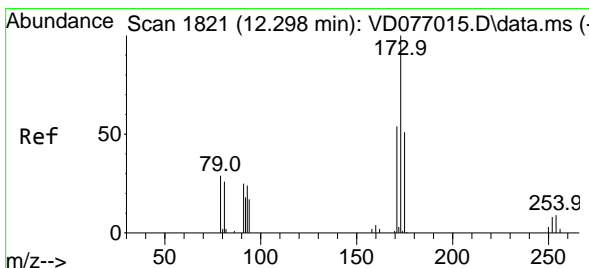
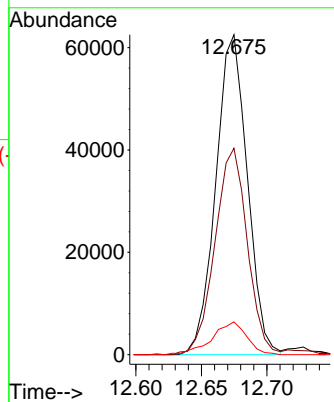
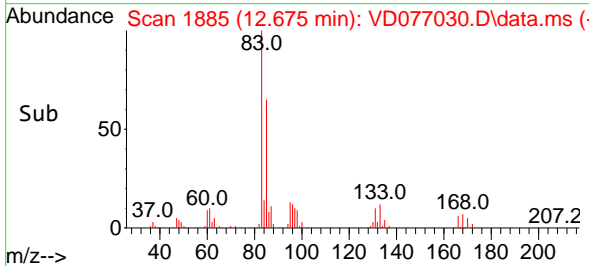


#57  
 1,1,2,2-Tetrachloroethane  
 Concen: 23.491 ug/L  
 RT: 12.675 min Scan# 1885  
 Delta R.T. 0.000 min  
 Lab File: VD077030.D  
 Acq: 25 Aug 2023 22:01

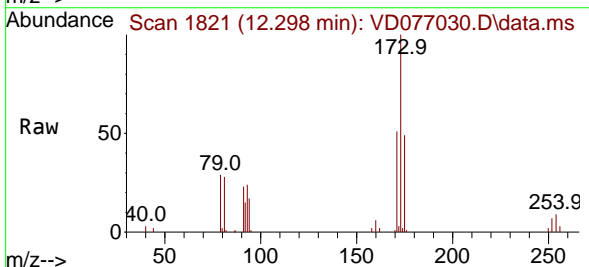
Instrument :  
 MSVOA\_D  
 ClientSampleId :  
 DCHW4MSD



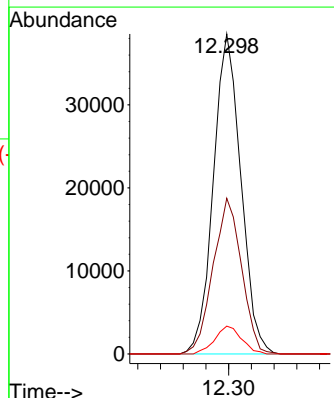
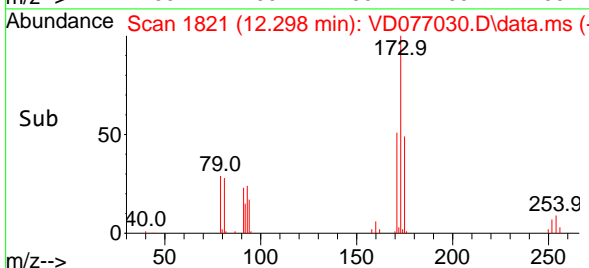
Tgt Ion: 83 Resp: 104543  
 Ion Ratio Lower Upper  
 83 100  
 85 64.5 46.3 86.1  
 131 10.3 7.0 10.4

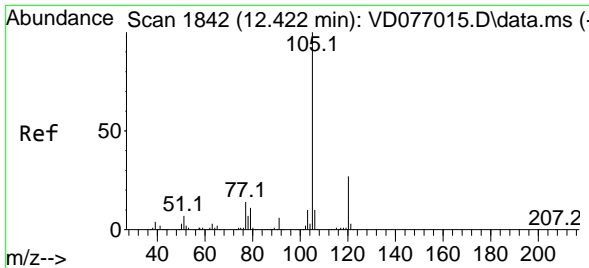


#59  
 Bromoform  
 Concen: 23.980 ug/L  
 RT: 12.298 min Scan# 1821  
 Delta R.T. 0.000 min  
 Lab File: VD077030.D  
 Acq: 25 Aug 2023 22:01



Tgt Ion: 173 Resp: 64713  
 Ion Ratio Lower Upper  
 173 100  
 175 50.4 39.0 58.4  
 254 8.5 5.3 7.9#



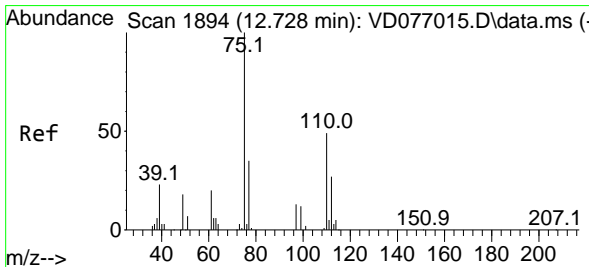
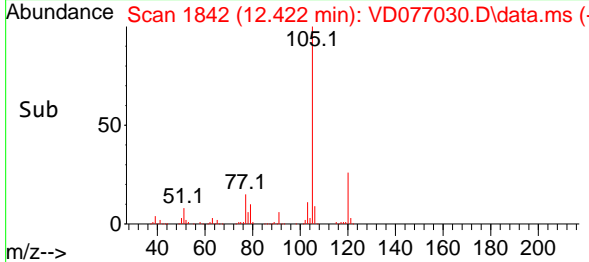
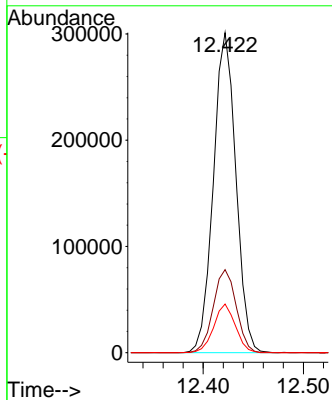
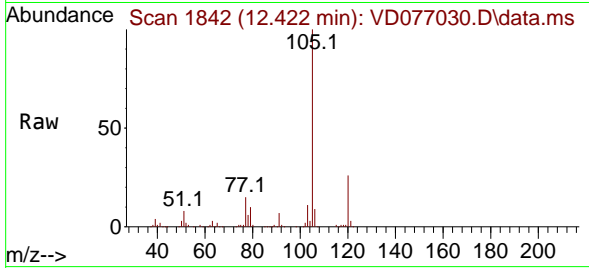


#60  
 Isopropylbenzene  
 Concen: 23.992 ug/L  
 RT: 12.422 min Scan# 1842  
 Delta R.T. 0.000 min  
 Lab File: VD077030.D  
 Acq: 25 Aug 2023 22:01

Instrument : MSVOA\_D  
 ClientSampleId : DCHW4MSD

Tgt Ion:105 Resp: 469518

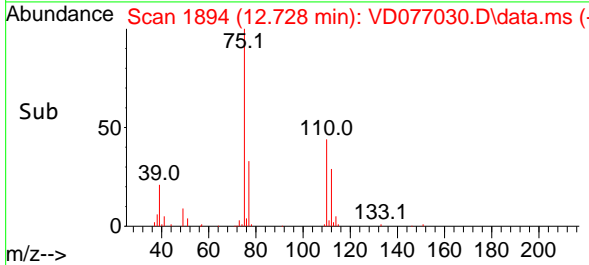
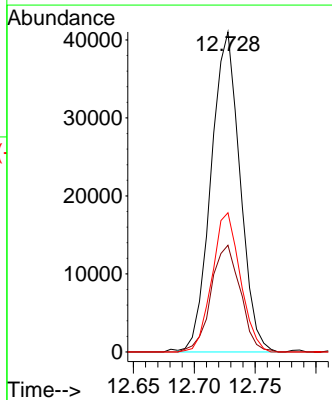
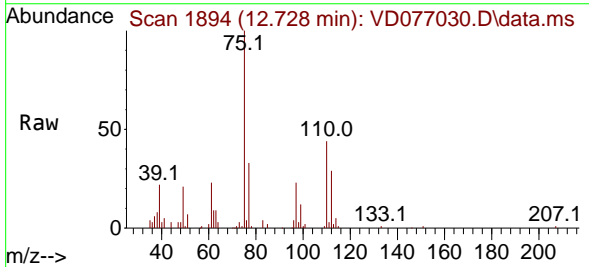
Ion	Ratio	Lower	Upper
105	100		
120	26.5	21.3	31.9
77	14.6	12.2	18.4

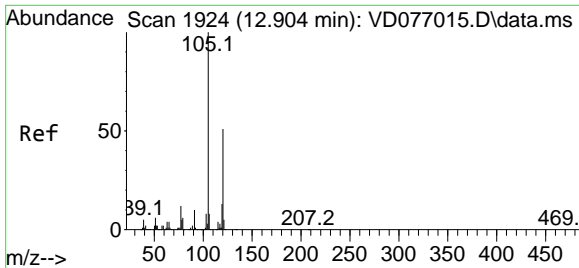


#61  
 1,2,3-Trichloropropane  
 Concen: 21.351 ug/L  
 RT: 12.728 min Scan# 1894  
 Delta R.T. 0.000 min  
 Lab File: VD077030.D  
 Acq: 25 Aug 2023 22:01

Tgt Ion: 75 Resp: 67805

Ion	Ratio	Lower	Upper
75	100		
77	33.9	27.2	40.8
110	42.5	31.8	47.6

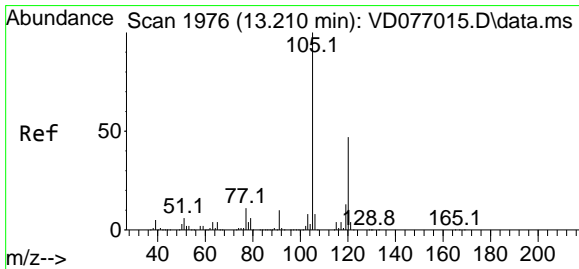
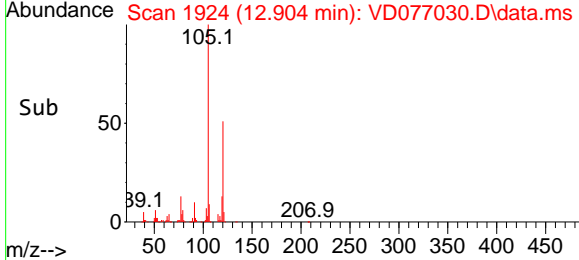
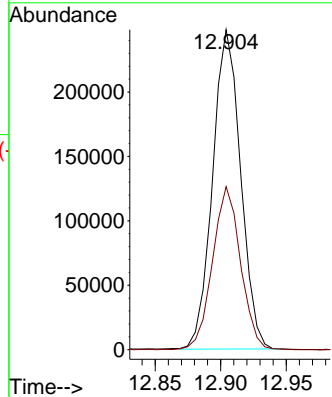
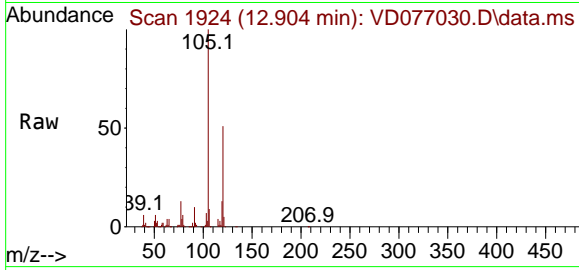




#62  
 1,3,5-Trimethylbenzene  
 Concen: 24.651 ug/L  
 RT: 12.904 min Scan# 1924  
 Delta R.T. 0.000 min  
 Lab File: VD077030.D  
 Acq: 25 Aug 2023 22:01

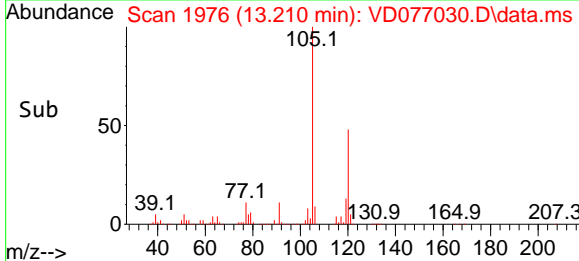
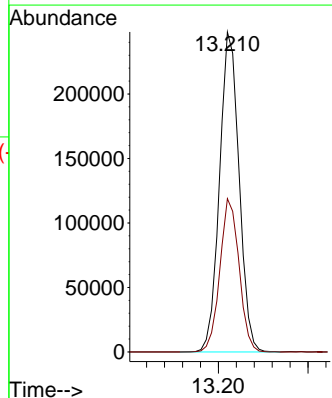
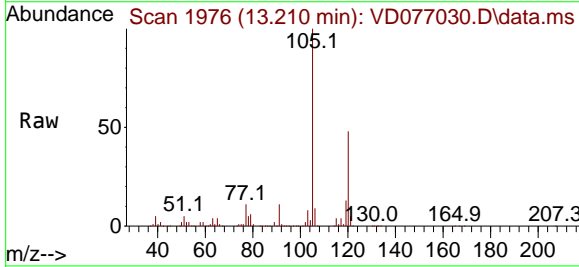
Instrument : MSVOA\_D  
 ClientSampleId : DCHW4MSD

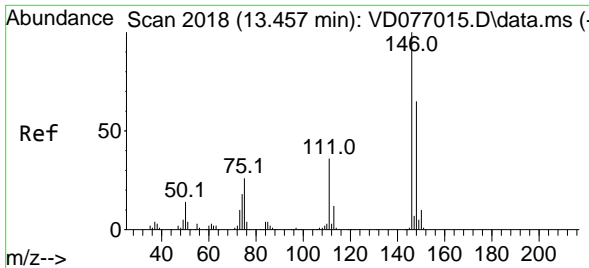
Tgt Ion:105 Resp: 367495  
 Ion Ratio Lower Upper  
 105 100  
 120 51.1 39.8 59.6



#63  
 1,2,4-Trimethylbenzene  
 Concen: 25.267 ug/L  
 RT: 13.210 min Scan# 1976  
 Delta R.T. 0.000 min  
 Lab File: VD077030.D  
 Acq: 25 Aug 2023 22:01

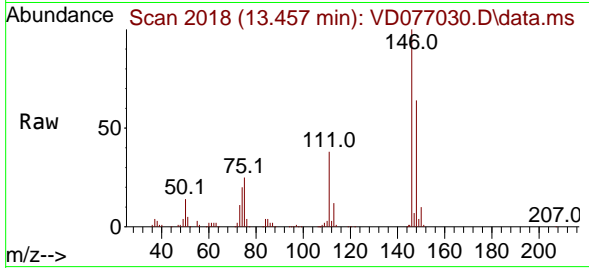
Tgt Ion:105 Resp: 374866  
 Ion Ratio Lower Upper  
 105 100  
 120 47.0 37.5 56.3



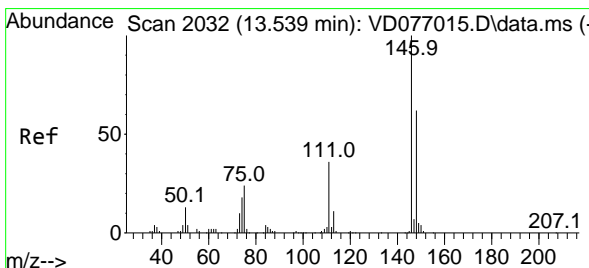
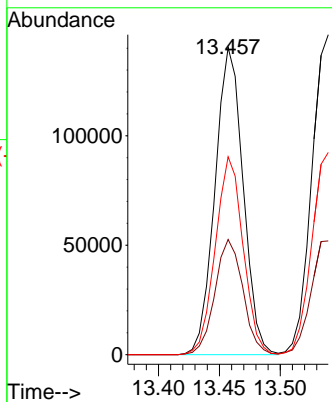
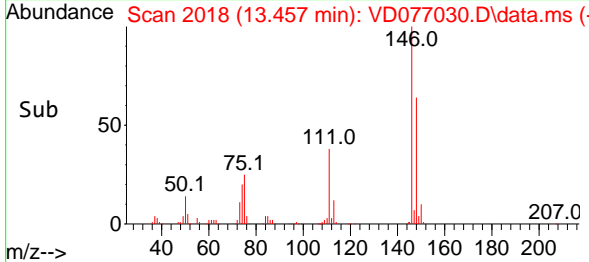


#64  
 1,3-Dichlorobenzene  
 Concen: 25.298 ug/L  
 RT: 13.457 min Scan# 2018  
 Delta R.T. 0.000 min  
 Lab File: VD077030.D  
 Acq: 25 Aug 2023 22:01

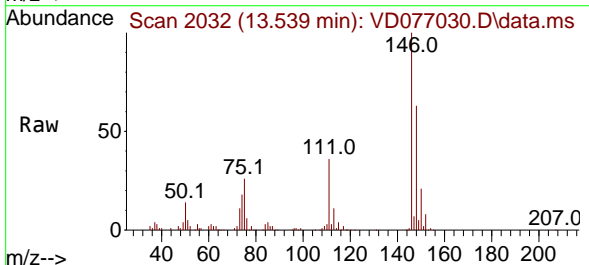
Instrument :  
 MSVOA\_D  
 ClientSampleId :  
 DCHW4MSD



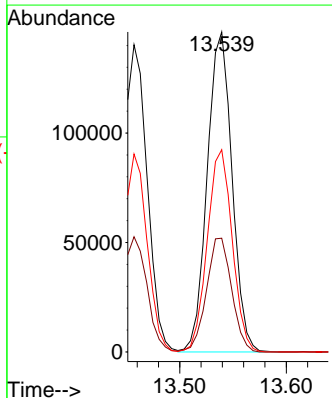
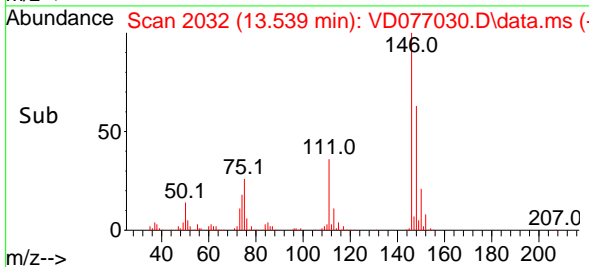
Tgt Ion:146 Resp: 225941  
 Ion Ratio Lower Upper  
 146 100  
 111 37.5 25.6 47.4  
 148 64.4 44.3 82.3

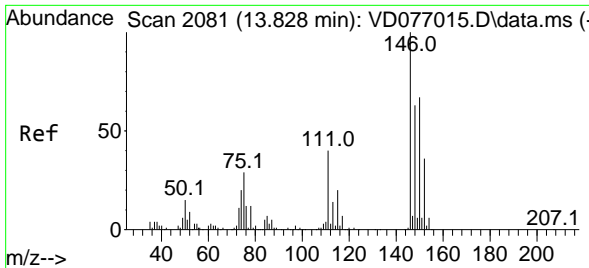


#65  
 1,4-Dichlorobenzene  
 Concen: 25.609 ug/L  
 RT: 13.539 min Scan# 2032  
 Delta R.T. 0.000 min  
 Lab File: VD077030.D  
 Acq: 25 Aug 2023 22:01



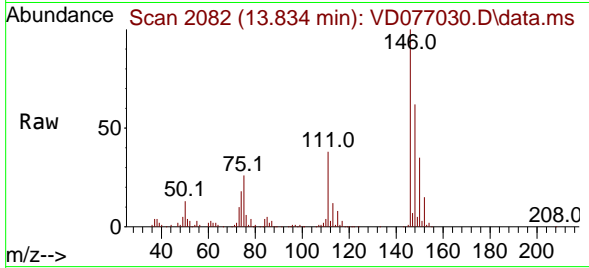
Tgt Ion:146 Resp: 236415  
 Ion Ratio Lower Upper  
 146 100  
 111 35.5 25.7 47.7  
 148 63.2 45.4 84.2



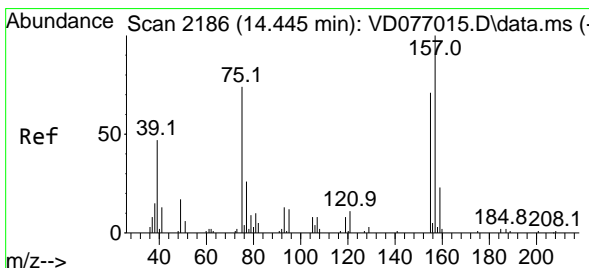
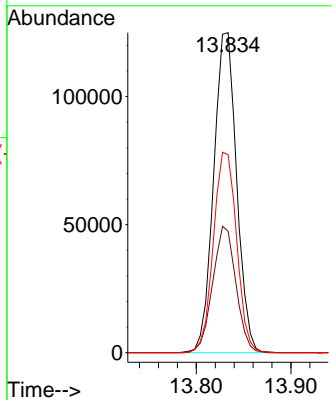
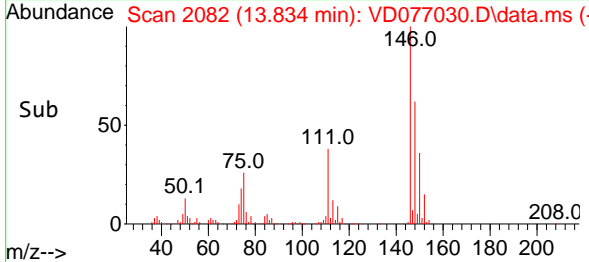


#67  
 1,2-Dichlorobenzene  
 Concen: 25.192 ug/L  
 RT: 13.834 min Scan# 2082  
 Delta R.T. 0.006 min  
 Lab File: VD077030.D  
 Acq: 25 Aug 2023 22:01

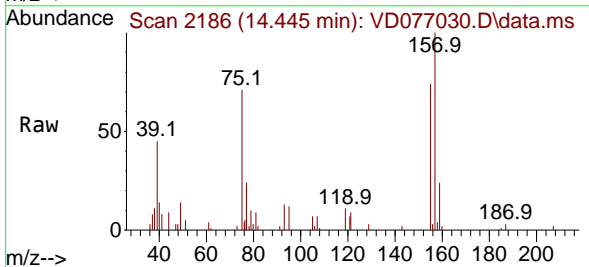
Instrument :  
 MSVOA\_D  
 ClientSampleId :  
 DCHW4MSD



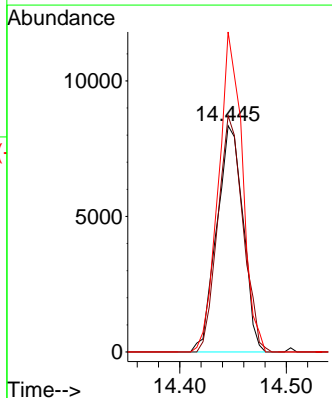
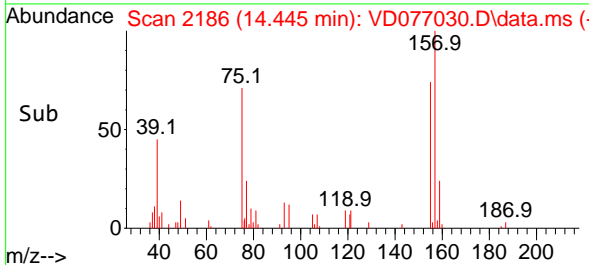
Tgt Ion:146 Resp: 210921  
 Ion Ratio Lower Upper  
 146 100  
 111 37.9 31.3 46.9  
 148 61.9 51.7 77.5

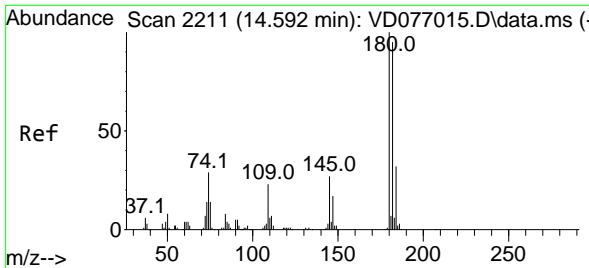


#68  
 1,2-Dibromo-3-chloropropane  
 Concen: 19.634 ug/L  
 RT: 14.445 min Scan# 2186  
 Delta R.T. 0.000 min  
 Lab File: VD077030.D  
 Acq: 25 Aug 2023 22:01



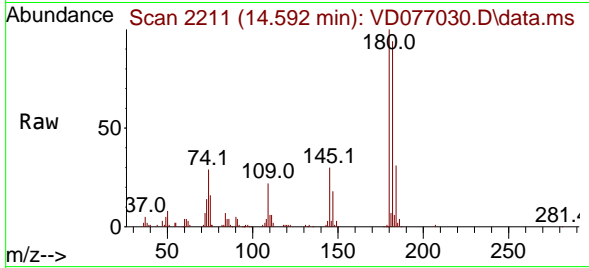
Tgt Ion: 75 Resp: 14287  
 Ion Ratio Lower Upper  
 75 100  
 155 104.4 76.2 114.4  
 157 141.4 89.4 134.2#



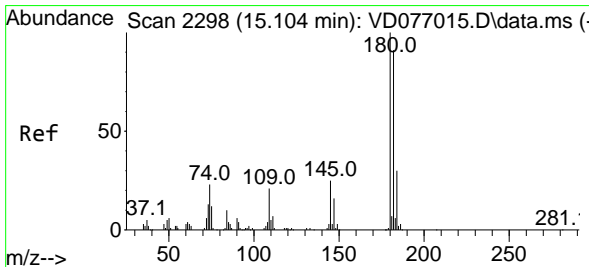
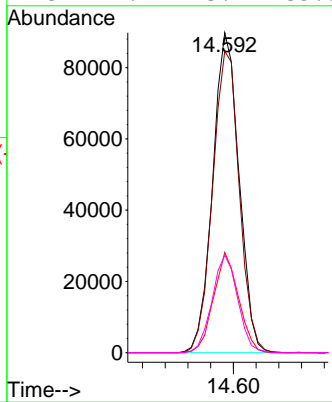
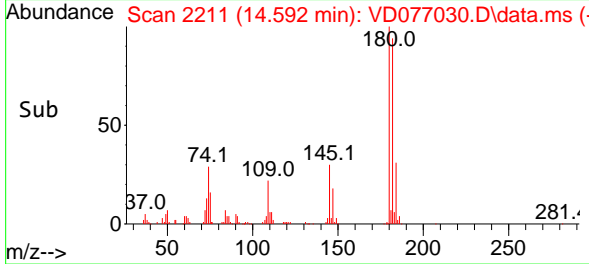


#69  
 1,3,5-Trichlorobenzene  
 Concen: 25.823 ug/L  
 RT: 14.592 min Scan# 2211  
 Delta R.T. 0.000 min  
 Lab File: VD077030.D  
 Acq: 25 Aug 2023 22:01

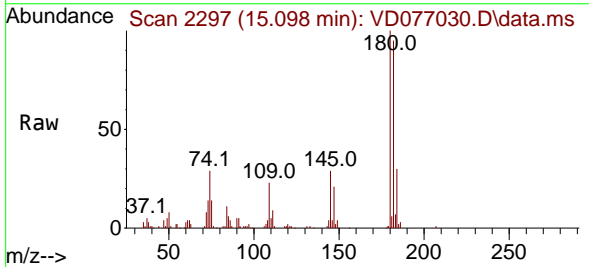
Instrument : MSVOA\_D  
 ClientSampleId : DCHW4MSD



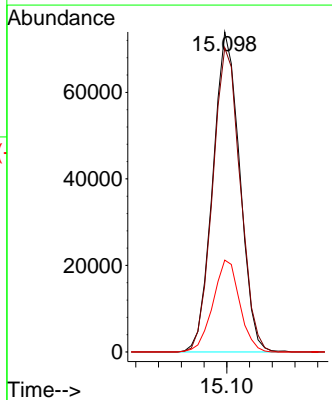
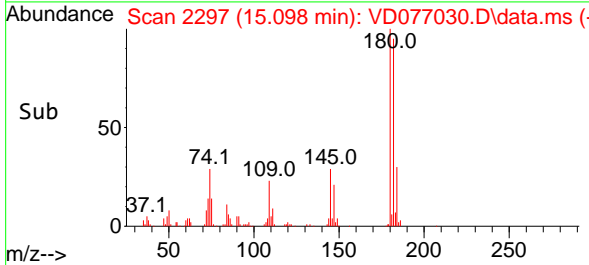
Tgt Ion:180 Resp: 144327  
 Ion Ratio Lower Upper  
 180 100  
 182 95.4 77.1 115.7  
 184 29.8 25.0 37.4  
 145 29.7 23.4 35.0

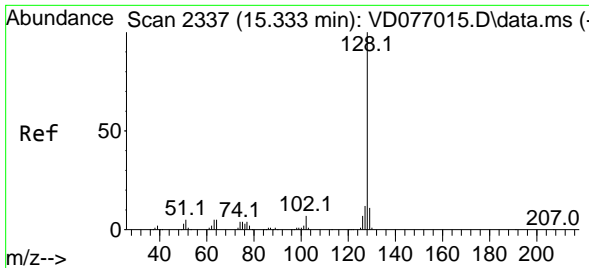


#70  
 1,2,4-trichlorobenzene  
 Concen: 24.727 ug/L  
 RT: 15.098 min Scan# 2297  
 Delta R.T. -0.006 min  
 Lab File: VD077030.D  
 Acq: 25 Aug 2023 22:01



Tgt Ion:180 Resp: 121570  
 Ion Ratio Lower Upper  
 180 100  
 182 97.3 76.9 115.3  
 145 28.5 23.5 35.3





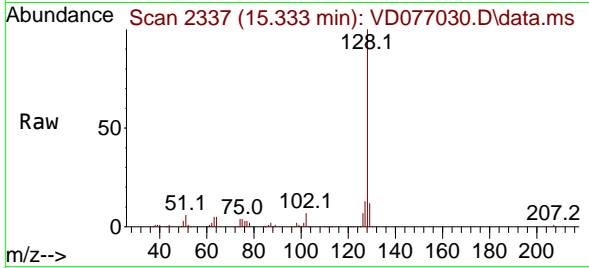
#71  
 Naphthalene  
 Concen: 22.510 ug/L  
 RT: 15.333 min Scan# 21  
 Delta R.T. 0.000 min  
 Lab File: VD077030.D  
 Acq: 25 Aug 2023 22:01

Instrument :

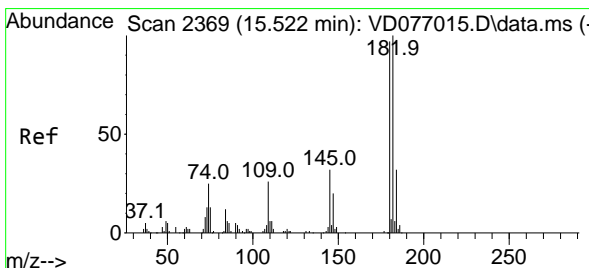
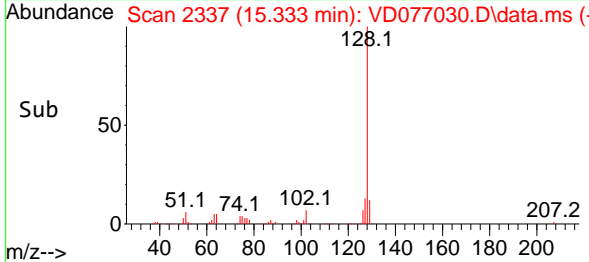
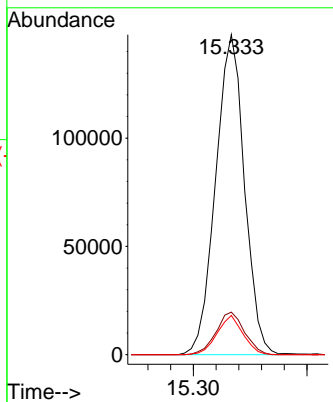
MSVOA\_D

ClientSampleId :

DCHW4MSD



Tgt Ion:128 Resp: 260216  
 Ion Ratio Lower Upper  
 128 100  
 127 13.2 10.8 16.2  
 129 11.0 8.6 12.8



#72  
 1,2,3-Trichlorobenzene  
 Concen: 26.662 ug/L  
 RT: 15.522 min Scan# 2369  
 Delta R.T. 0.000 min  
 Lab File: VD077030.D  
 Acq: 25 Aug 2023 22:01

Tgt Ion:180 Resp: 118878  
 Ion Ratio Lower Upper  
 180 100  
 182 94.1 74.3 111.5  
 145 30.6 25.0 37.6

