

Data Path : Z:\VOASRV\HPCHEM1\MSVOA D\DATA\VD090420\
 Data File : VD066571.D
 Acq On : 04 Sep 2020 18:57
 Operator : VA/SY
 Sample : L3896-01
 Misc : 5.01G/5.00ml/MSVOA D/SOIL
 ALS Vial : 19 Sample Multiplier: 1

Instrument :
 MSVOA_D
 ClientSampleId :
 WC-1

Quant Time: Sep 05 05:40:53 2020
 Quant Method : Z:\VOASRV\HPCHEM1\MSVOA_D\METHOD\82D090320S.M
 Quant Title : SW846 8260
 QLast Update : Fri Sep 04 01:57:04 2020
 Response via : Initial Calibration

Internal Standards	R.T.	QIon	Response	Conc	Units	Dev(Min)
1) Pentafluorobenzene	7.98	168	419920	50.00	ug/l	0.00
34) 1,4-Difluorobenzene	8.86	114	729401	50.00	ug/l	0.00
63) Chlorobenzene-d5	11.64	117	569261	50.00	ug/l	0.00
72) 1,4-Dichlorobenzene-d4	13.58	152	170586	50.00	ug/l	0.00

System Monitoring Compounds

33) 1,2-Dichloroethane-d4	8.33	65	279241	54.96	ug/l	0.00
Spiked Amount	50.000		Recovery	=	109.92%	
35) Dibromofluoromethane	7.91	113	257398	52.31	ug/l	0.00
Spiked Amount	50.000		Recovery	=	104.62%	
50) Toluene-d8	10.34	98	837872	47.64	ug/l	0.00
Spiked Amount	50.000		Recovery	=	95.28%	
62) 4-Bromofluorobenzene	12.63	95	235047	40.31	ug/l	0.00
Spiked Amount	50.000		Recovery	=	80.62%	

Target Compounds

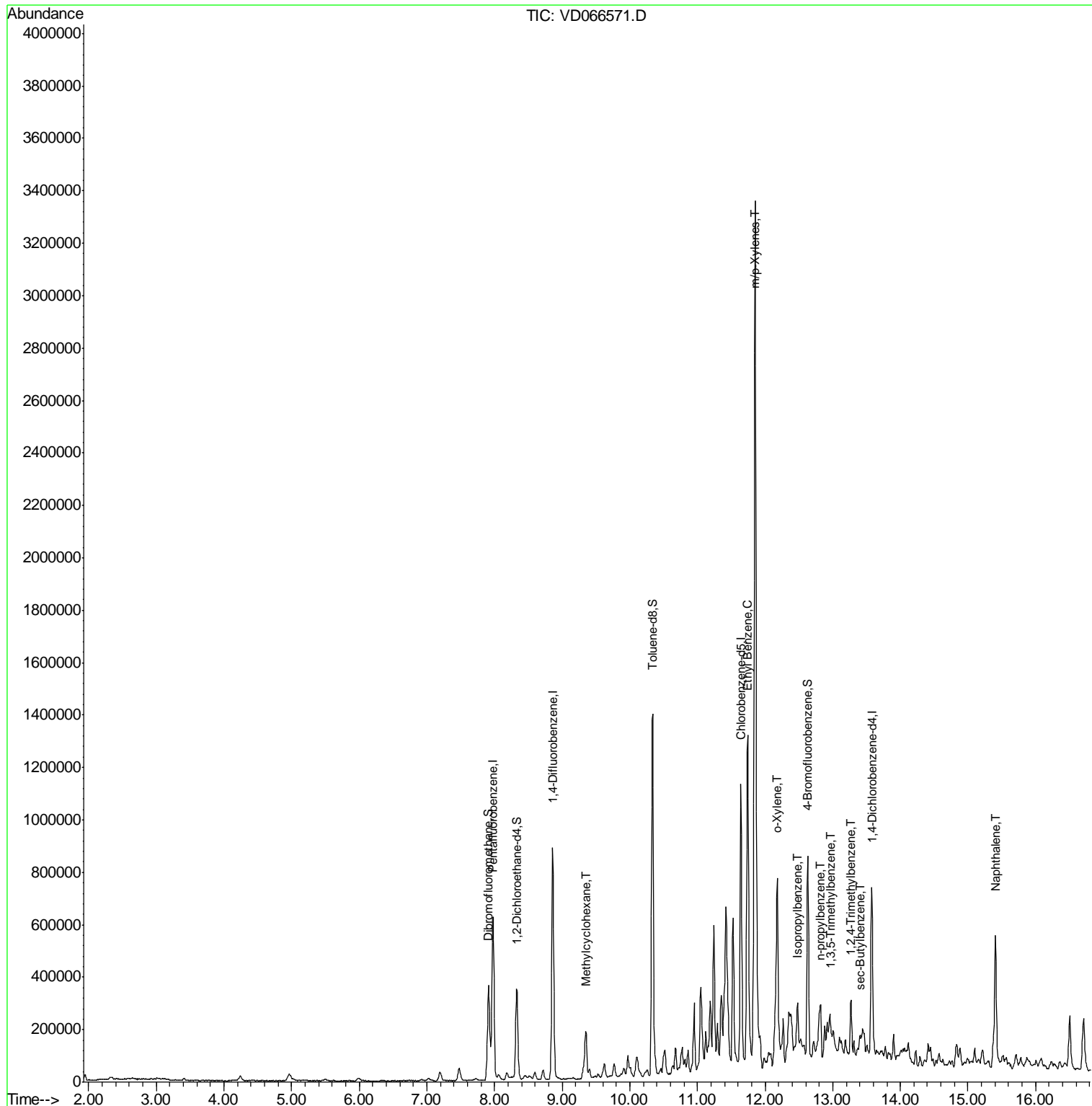
					Qvalue	
39) Methylcyclohexane	9.36	83	67070	7.913	ug/l	95
67) Ethyl Benzene	11.74	91	792050	36.714	ug/l	98
68) m/p-Xylenes	11.86	106	1042795	130.181	ug/l	98
69) o-Xylene	12.18	106	179954	25.067	ug/l	98
73) Isopropylbenzene	12.48	105	111949	8.864	ug/l	99
78) n-propylbenzene	12.82	91	137181	8.960	ug/l	97
80) 1,3,5-Trimethylbenzene	12.96	105	24664	2.320	ug/l	97
84) 1,2,4-Trimethylbenzene	13.27	105	123088	11.630	ug/l	99
85) sec-Butylbenzene	13.41	105	12695	1.015	ug/l #	58
95) Naphthalene	15.41	128	453613	88.524	ug/l	99

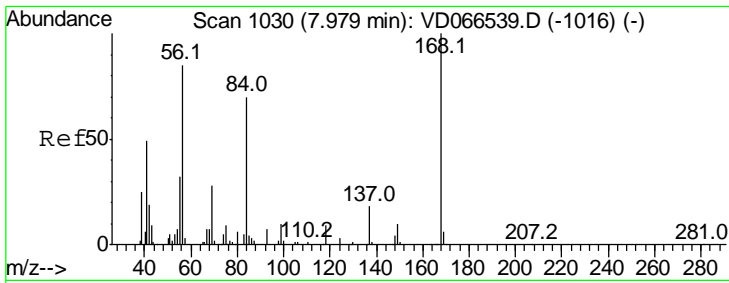
(#) = qualifier out of range (m) = manual integration (+) = signals summed

Data Path : Z:\VOASRV\HPCHEM1\MSVOA D\DATA\VD090420\
 Data File : VD066571.D
 Acq On : 04 Sep 2020 18:57
 Operator : VA/SY
 Sample : L3896-01
 Misc : 5.01G/5.00ml/MSVOA D/SOIL
 ALS Vial : 19 Sample Multiplier: 1

Instrument :
 MSVOA_D
 ClientSampleId :
 WC-1

Quant Time: Sep 05 05:40:53 2020
 Quant Method : Z:\VOASRV\HPCHEM1\MSVOA_D\METHOD\82D090320S.M
 Quant Title : SW846 8260
 QLast Update : Fri Sep 04 01:57:04 2020
 Response via : Initial Calibration

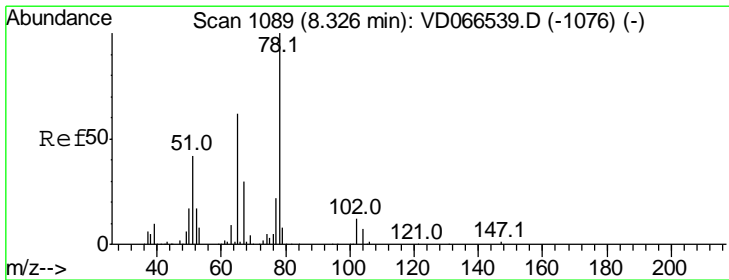
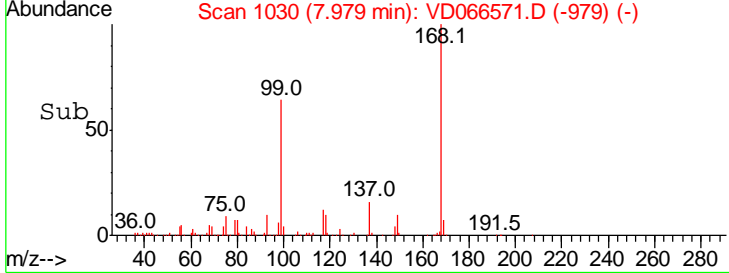
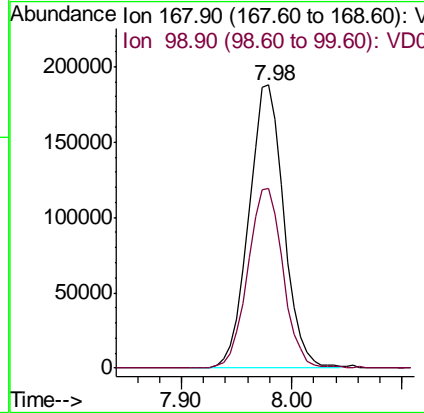
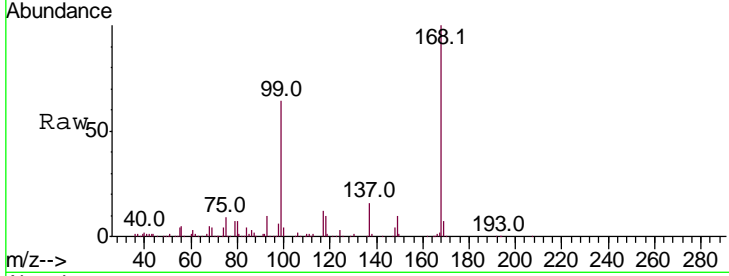




#1
 Pentafluorobenzene
 Concen: 50.000 ug/l
 RT: 7.98 min Scan# 1030
 Delta R.T. -0.00 min
 Lab File: VD066571.D
 Acq: 04 Sep 2020 18:57

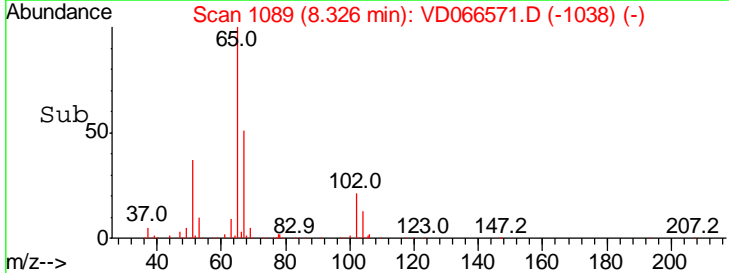
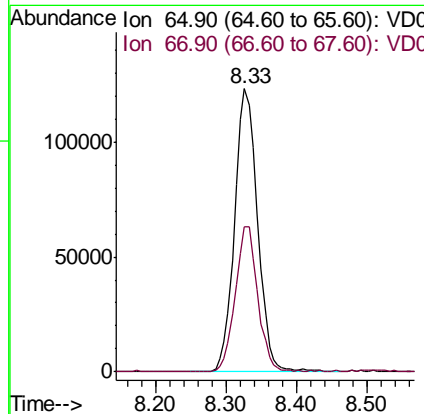
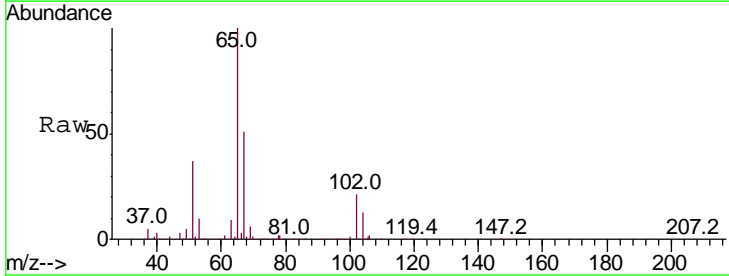
Instrument : MSVOA_D
 ClientSampled : WC-1

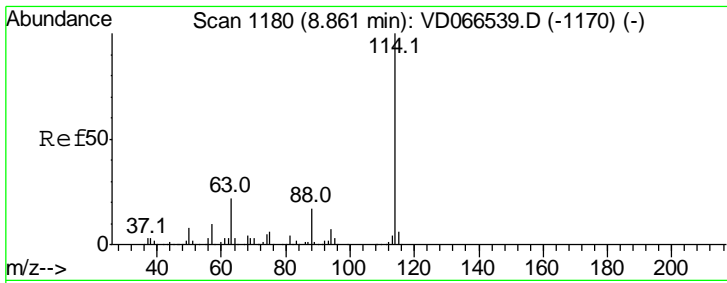
Tgt Ion: 168 Resp: 419920
 Ion Ratio Lower Upper
 168 100
 99 63.7 50.5 75.7



#33
 1,2-Dichloroethane-d4
 Concen: 54.962 ug/l
 RT: 8.33 min Scan# 1089
 Delta R.T. -0.00 min
 Lab File: VD066571.D
 Acq: 04 Sep 2020 18:57

Tgt Ion: 65 Resp: 279241
 Ion Ratio Lower Upper
 65 100
 67 49.3 0.0 102.8

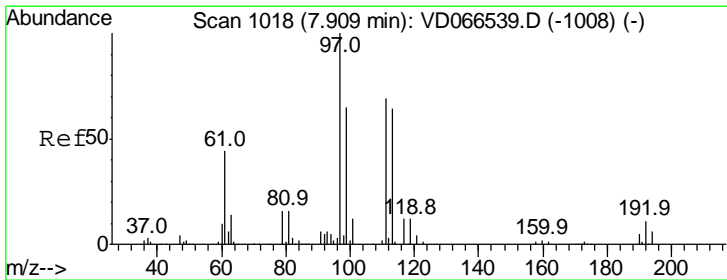
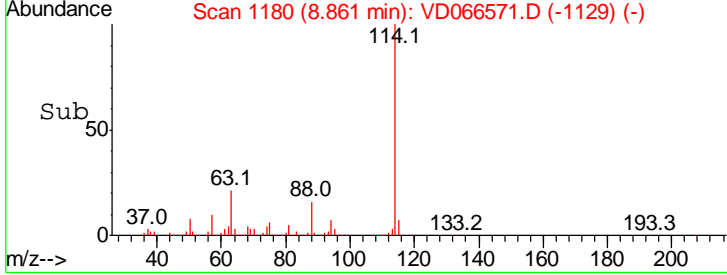
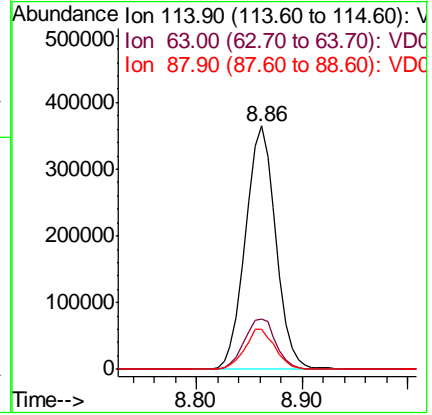
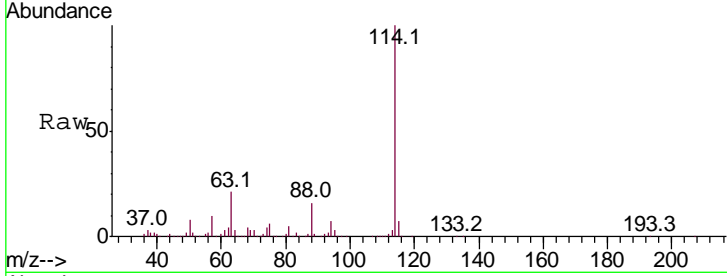




#34
 1,4-Difluorobenzene
 Concen: 50.000 ug/l
 RT: 8.86 min Scan# 1180
 Delta R.T. -0.00 min
 Lab File: VD066571.D
 Acq: 04 Sep 2020 18:57

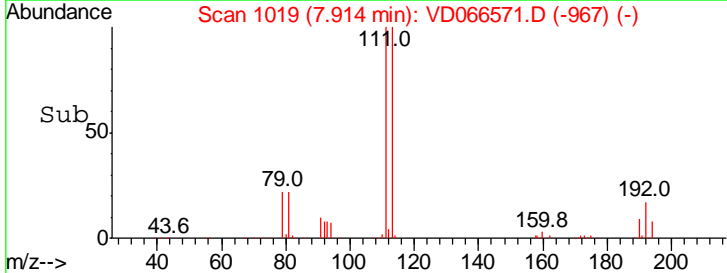
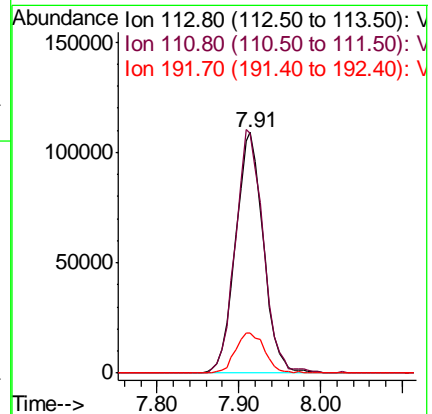
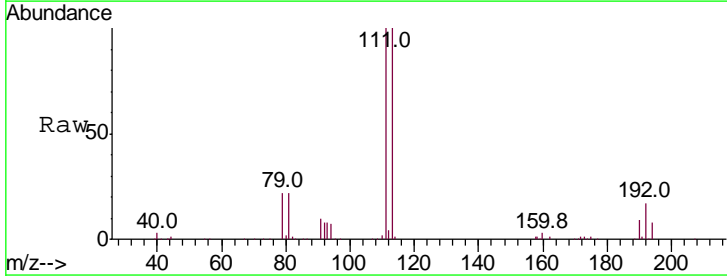
Instrument :
 MSVOA_D
 ClientSampled :
 WC-1

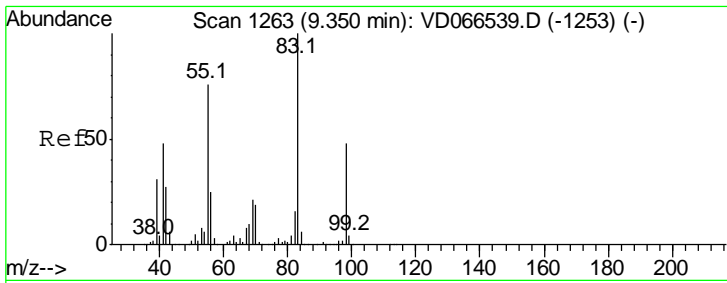
Tgt Ion	Resp	Lower	Upper
114	100		
63	20.8	0.0	43.2
88	16.3	0.0	33.2



#35
 Dibromofluoromethane
 Concen: 52.310 ug/l
 RT: 7.91 min Scan# 1019
 Delta R.T. 0.01 min
 Lab File: VD066571.D
 Acq: 04 Sep 2020 18:57

Tgt Ion	Resp	Lower	Upper
113	100		
111	101.7	83.2	124.8
192	17.9	13.7	20.5

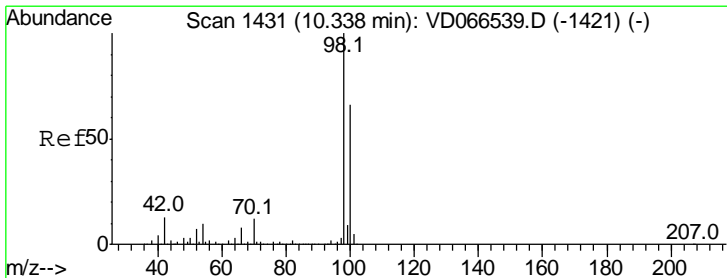
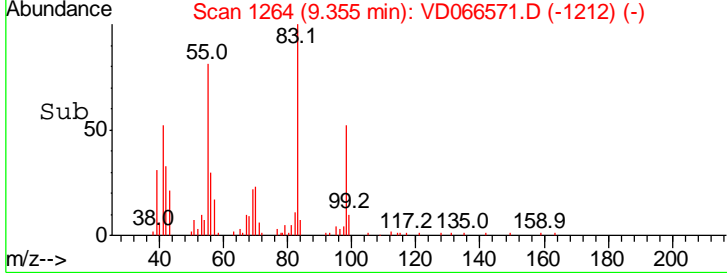
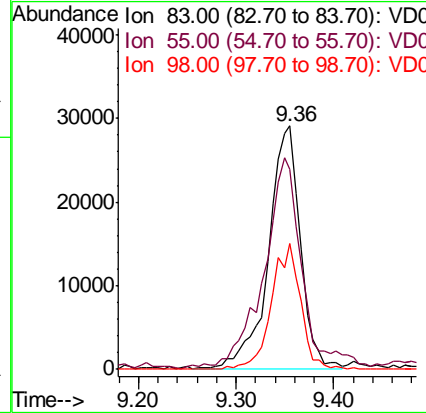
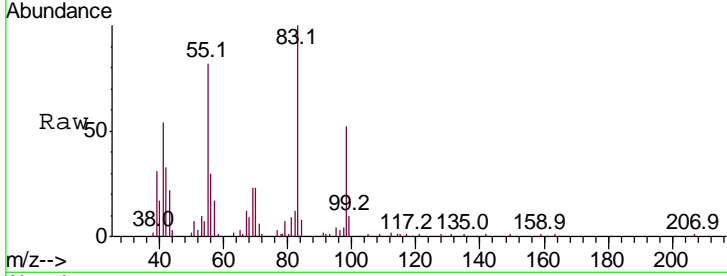




#39
 Methylcyclohexane
 Concen: 7.913 ug/l
 RT: 9.36 min Scan# 1264
 Delta R.T. 0.01 min
 Lab File: VD066571.D
 Acq: 04 Sep 2020 18:57

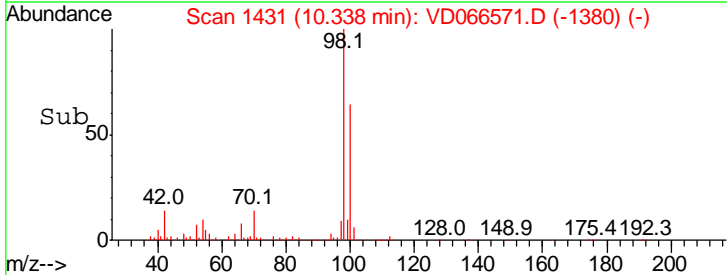
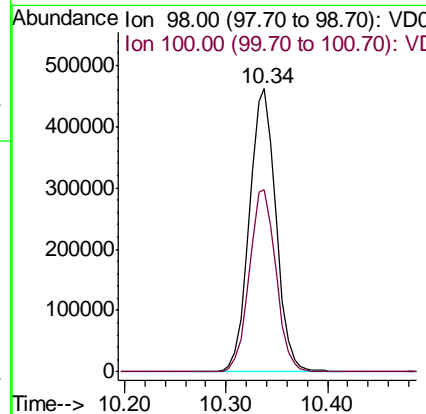
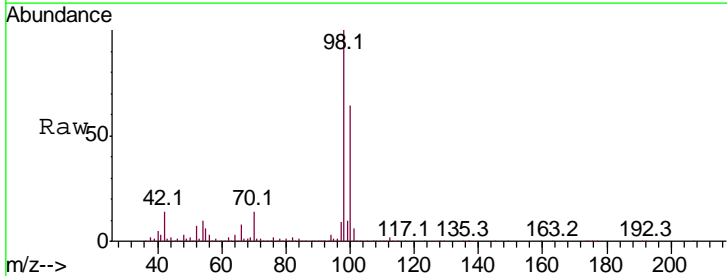
Instrument :
 MSVOA_D
 ClientSampled :
 WC-1

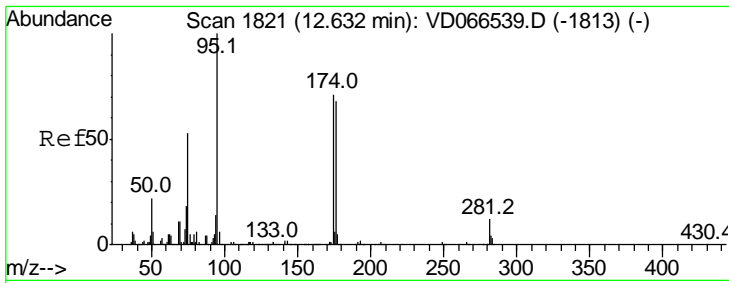
Tgt Ion	Resp	Lower	Upper
83	100		
55	80.9	60.8	91.2
98	51.8	38.6	58.0



#50
 Toluene-d8
 Concen: 47.642 ug/l
 RT: 10.34 min Scan# 1431
 Delta R.T. -0.00 min
 Lab File: VD066571.D
 Acq: 04 Sep 2020 18:57

Tgt Ion	Resp	Lower	Upper
98	100		
100	64.8	52.9	79.3

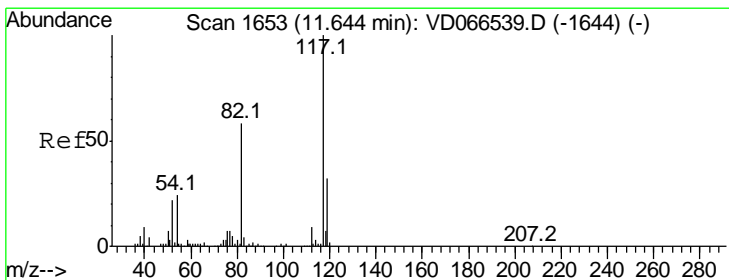
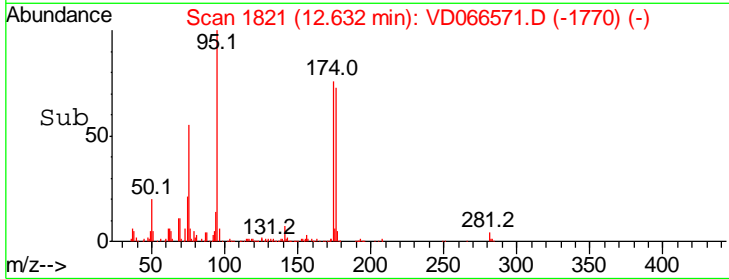
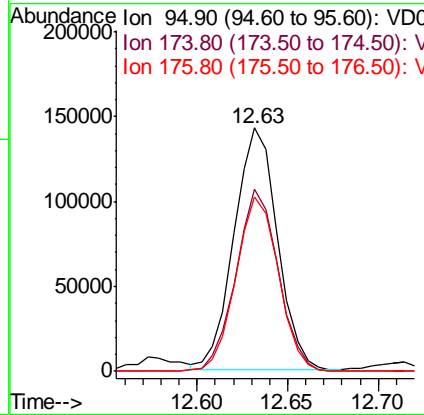
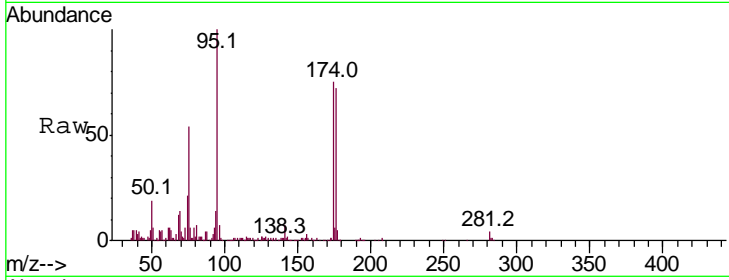




#62
 4-Bromofluorobenzene
 Concen: 40.305 ug/l
 RT: 12.63 min Scan# 1821
 Delta R.T. -0.00 min
 Lab File: VD066571.D
 Acq: 04 Sep 2020 18:57

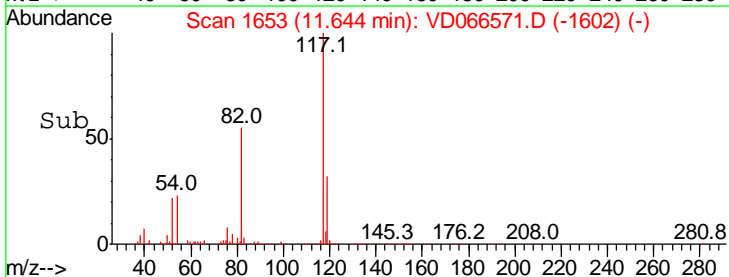
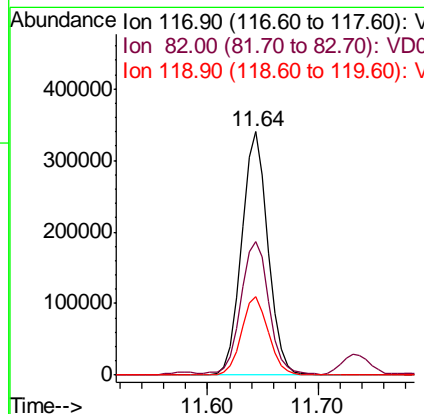
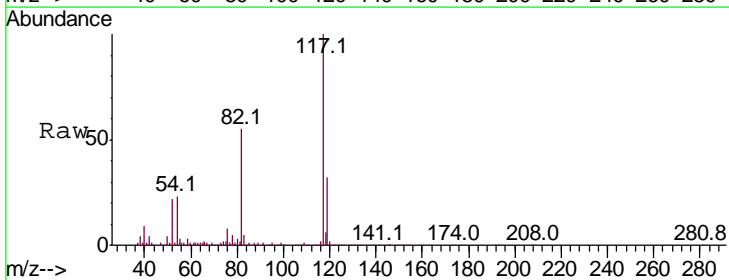
Instrument :
 MSVOA_D
 ClientSampled :
 WC-1

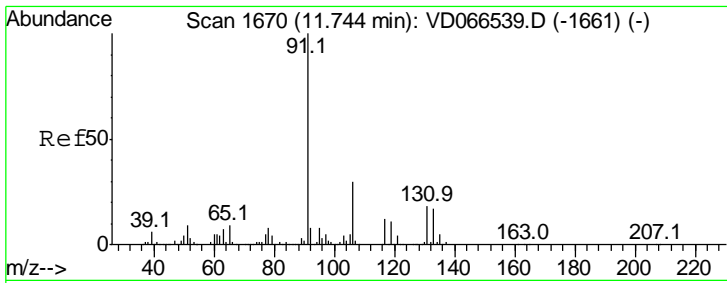
Tgt Ion	Resp	Lower	Upper
95	235047		
174	74.5	0.0	155.8
176	71.4	0.0	148.6



#63
 Chlorobenzene-d5
 Concen: 50.000 ug/l
 RT: 11.64 min Scan# 1653
 Delta R.T. -0.00 min
 Lab File: VD066571.D
 Acq: 04 Sep 2020 18:57

Tgt Ion	Resp	Lower	Upper
117	569261		
82	53.6	46.2	69.2
119	32.1	25.8	38.8

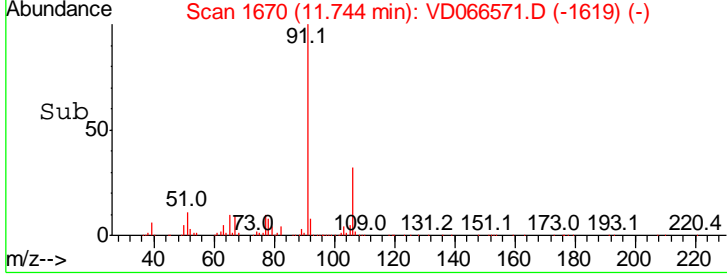
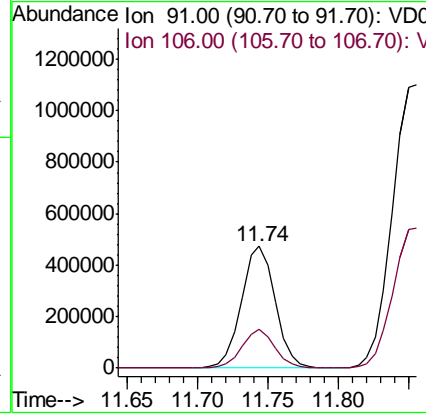
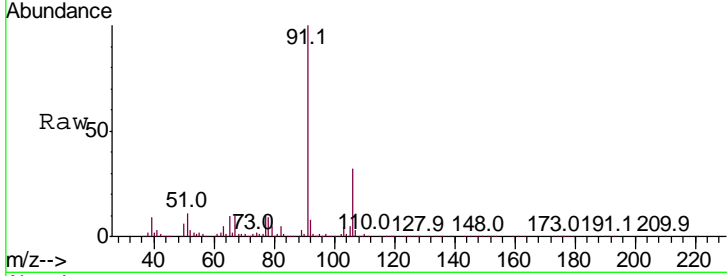




#67
 Ethyl Benzene
 Concen: 36.714 ug/l
 RT: 11.74 min Scan# 1670
 Delta R.T. -0.00 min
 Lab File: VD066571.D
 Acq: 04 Sep 2020 18:57

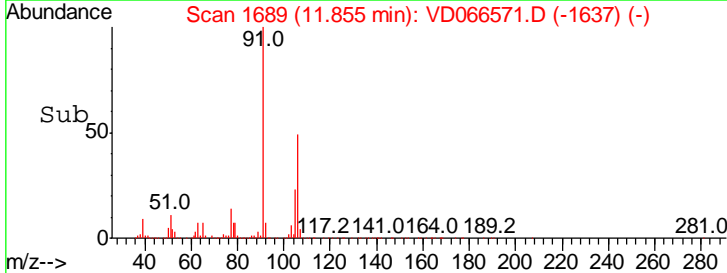
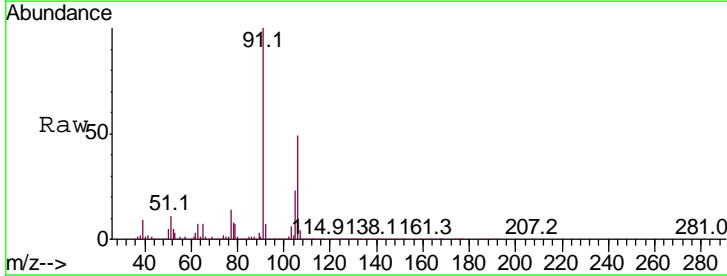
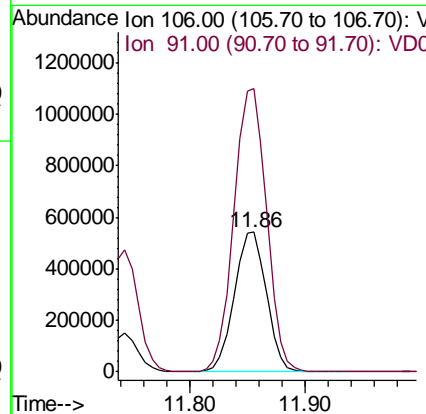
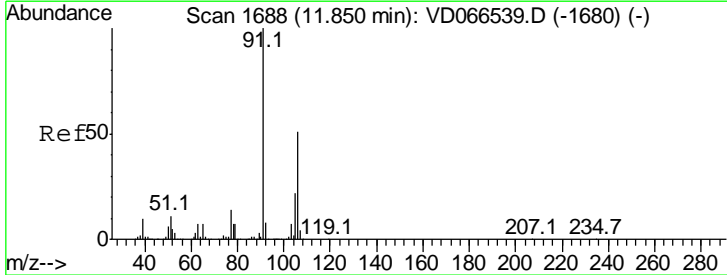
Instrument : MSVOA_D
 Client Sampled : WC-1

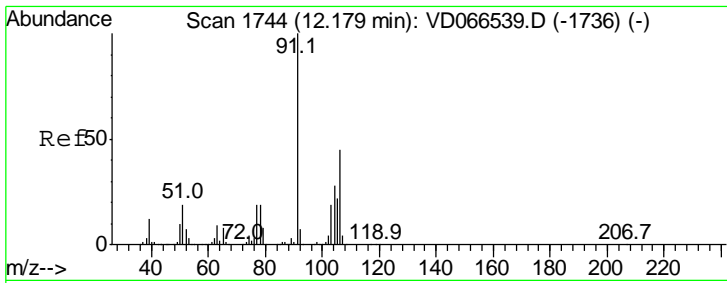
Tgt Ion:	91	Resp:	792050
Ion Ratio	Lower	Upper	
91	100		
106	31.6	24.3	36.5



#68
 m/p-Xylenes
 Concen: 130.181 ug/l
 RT: 11.86 min Scan# 1689
 Delta R.T. 0.01 min
 Lab File: VD066571.D
 Acq: 04 Sep 2020 18:57

Tgt Ion:	106	Resp:	1042795
Ion Ratio	Lower	Upper	
106	100		
91	206.5	162.4	243.6

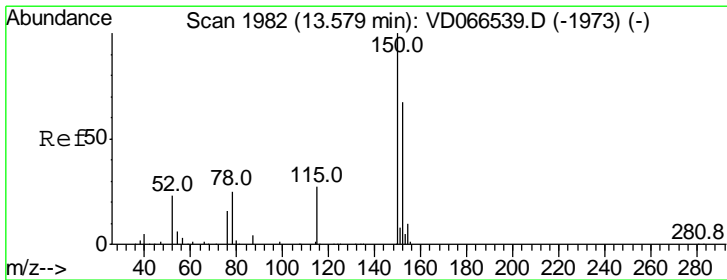
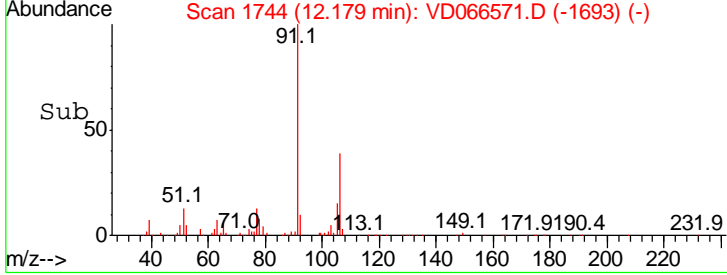
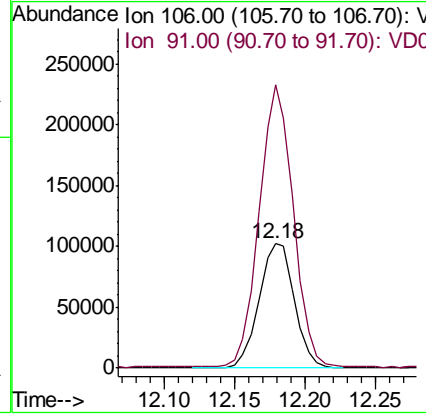
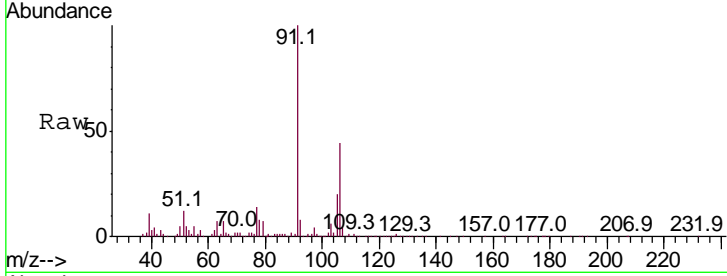




#69
 o-Xylene
 Concen: 25.067 ug/l
 RT: 12.18 min Scan# 1744
 Delta R.T. -0.00 min
 Lab File: VD066571.D
 Acq: 04 Sep 2020 18:57

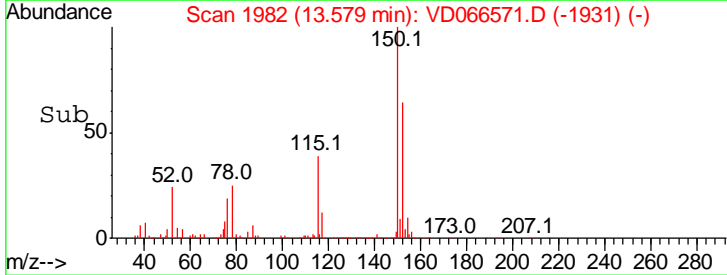
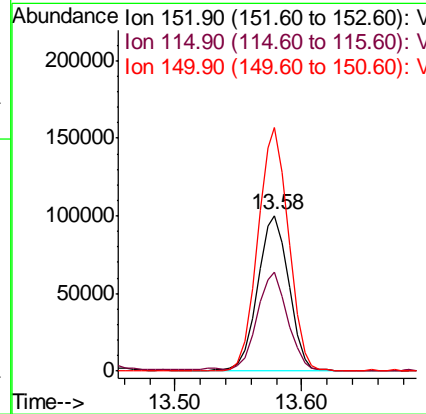
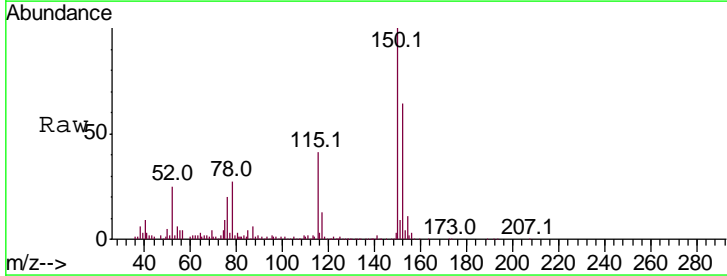
Instrument : MSVOA_D
 Client Sampled : WC-1

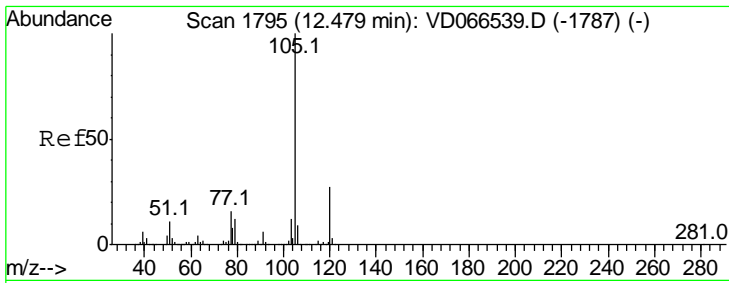
Tgt Ion	Resp	Lower	Upper
106	179954		
106	100		
91	219.8	107.9	323.8



#72
 1,4-Dichlorobenzene-d4
 Concen: 50.000 ug/l
 RT: 13.58 min Scan# 1982
 Delta R.T. -0.00 min
 Lab File: VD066571.D
 Acq: 04 Sep 2020 18:57

Tgt Ion	Resp	Lower	Upper
152	170586		
152	100		
115	61.7	30.4	91.2
150	154.4	0.0	345.8

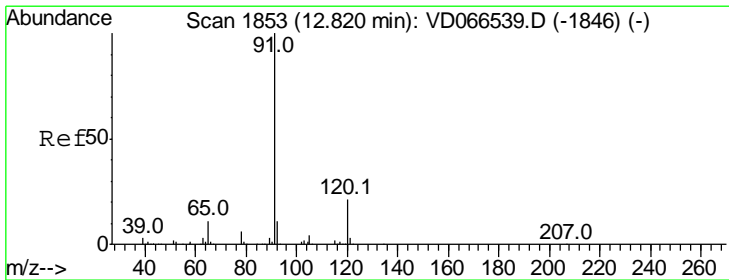
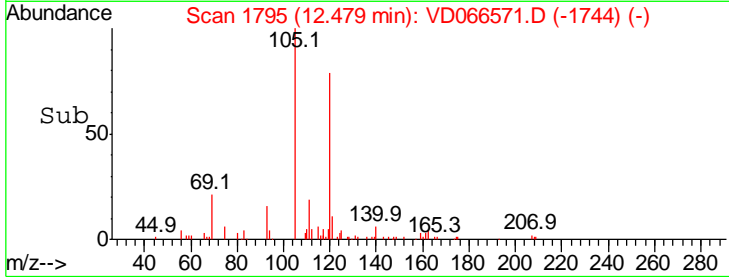
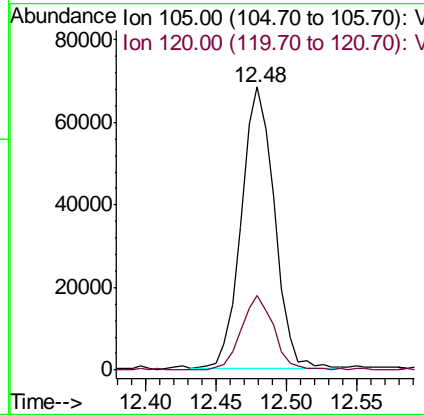
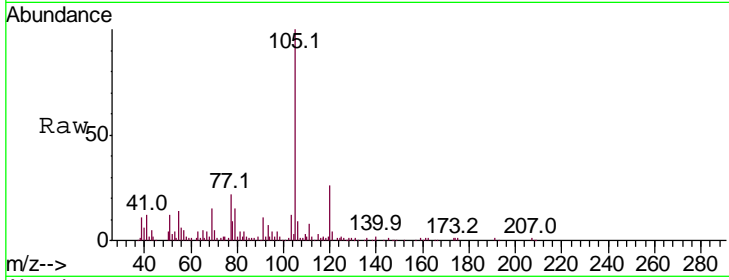




#73
 Isopropylbenzene
 Concen: 8.864 ug/l
 RT: 12.48 min Scan# 1795
 Delta R.T. -0.00 min
 Lab File: VD066571.D
 Acq: 04 Sep 2020 18:57

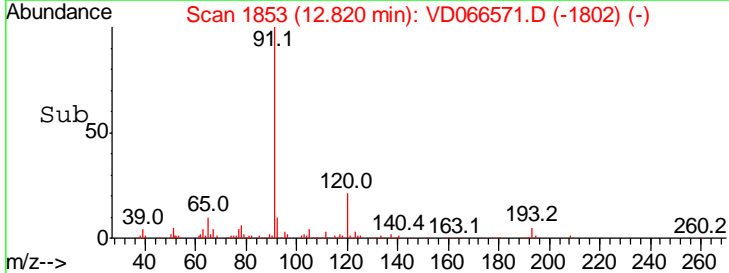
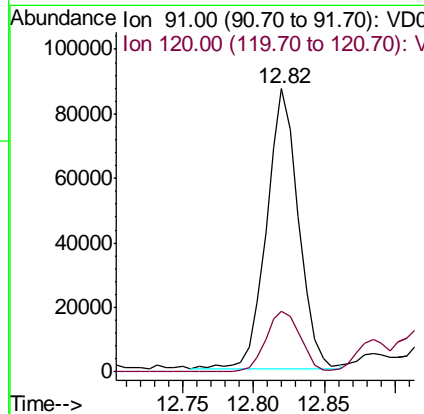
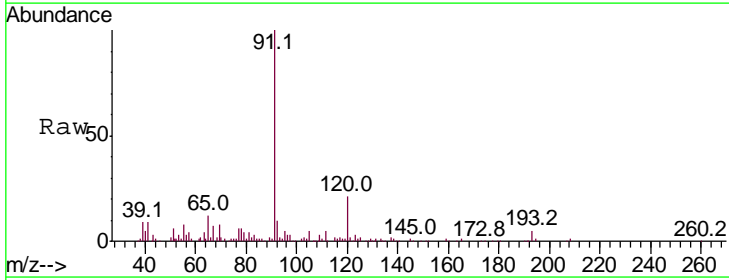
Instrument : MSVOA_D
 ClientSampled : WC-1

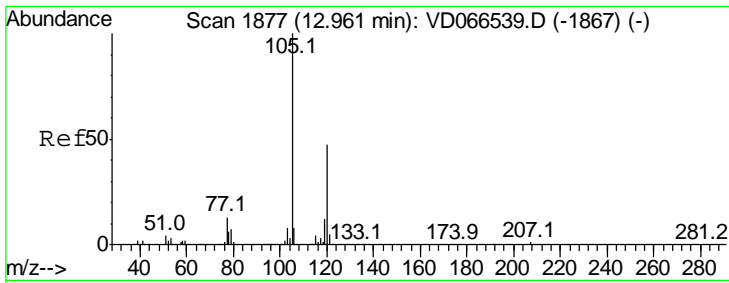
Tgt Ion	Resp	Lower	Upper
105	100		
120	26.6	13.0	39.0



#78
 n-propylbenzene
 Concen: 8.960 ug/l
 RT: 12.82 min Scan# 1853
 Delta R.T. -0.00 min
 Lab File: VD066571.D
 Acq: 04 Sep 2020 18:57

Tgt Ion	Resp	Lower	Upper
91	100		
120	23.7	11.1	33.1

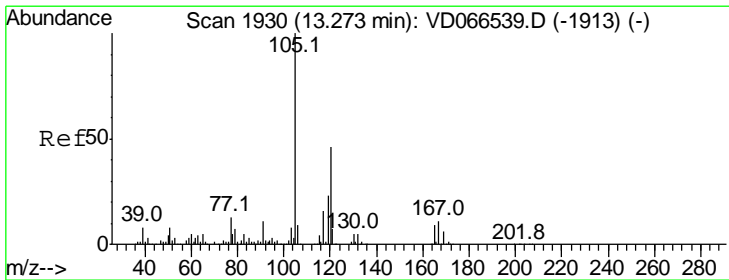
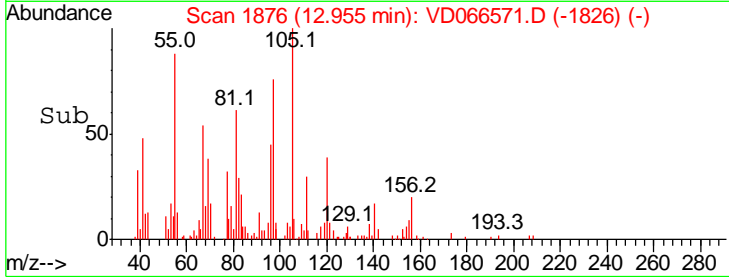
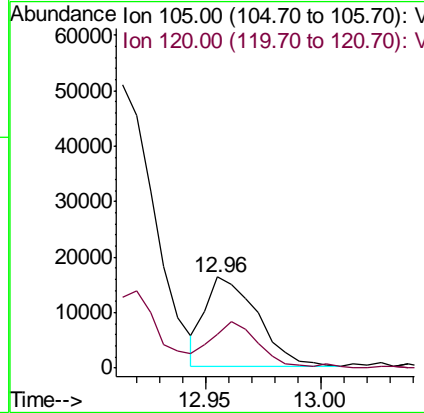
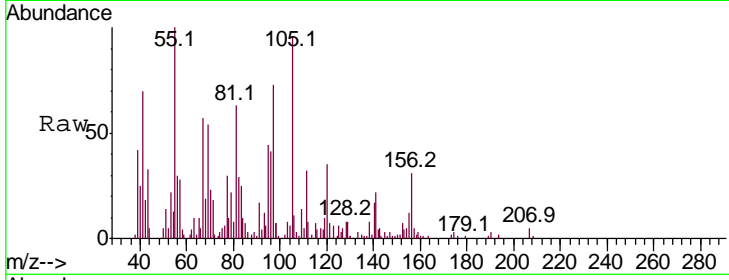




#80
 1,3,5-Trimethylbenzene
 Concen: 2.320 ug/l
 RT: 12.96 min Scan# 1876
 Delta R.T. -0.01 min
 Lab File: VD066571.D
 Acq: 04 Sep 2020 18:57

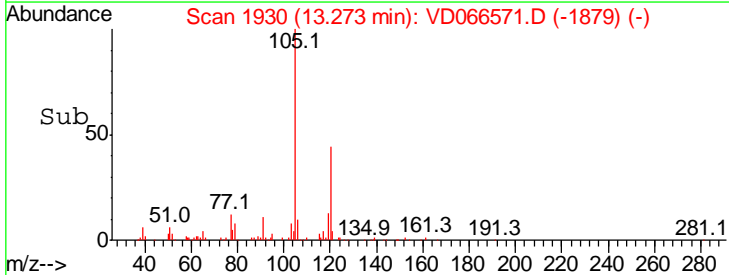
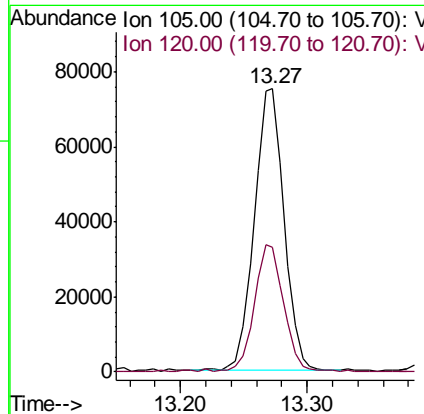
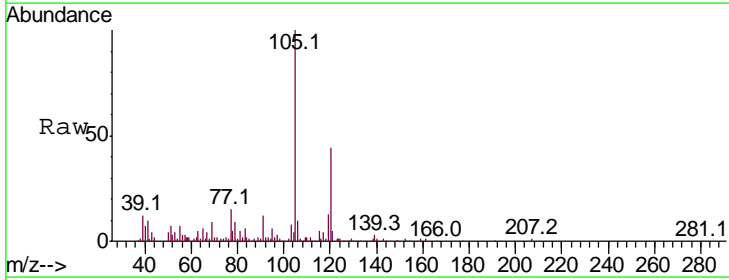
Instrument :
 MSVOA_D
 ClientSampled :
 WC-1

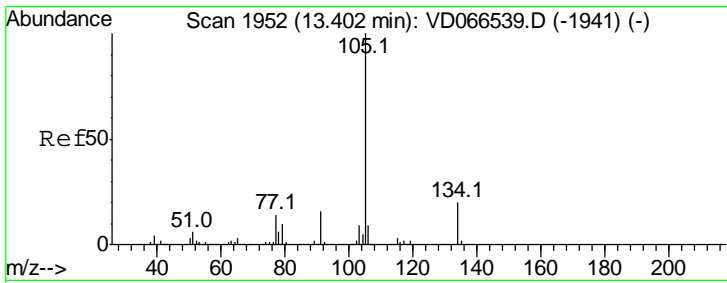
Tgt Ion	Resp	Lower	Upper
105	100		
120	50.0	23.9	71.8



#84
 1,2,4-Trimethylbenzene
 Concen: 11.630 ug/l
 RT: 13.27 min Scan# 1930
 Delta R.T. -0.00 min
 Lab File: VD066571.D
 Acq: 04 Sep 2020 18:57

Tgt Ion	Resp	Lower	Upper
105	100		
120	44.4	22.6	67.7

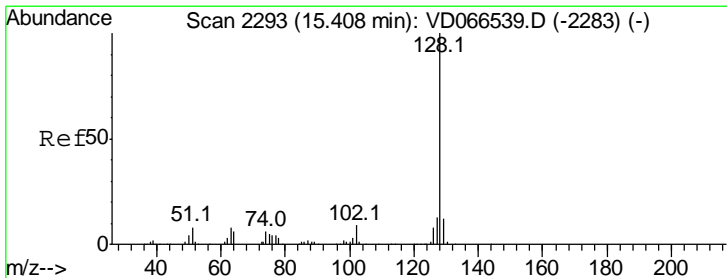
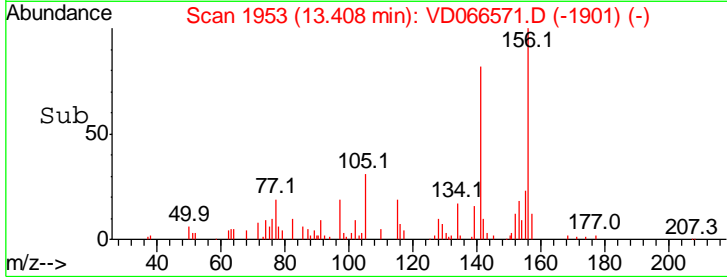
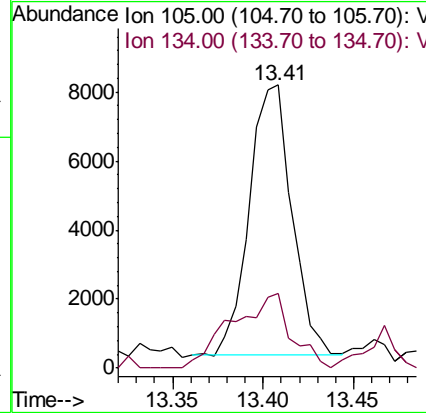
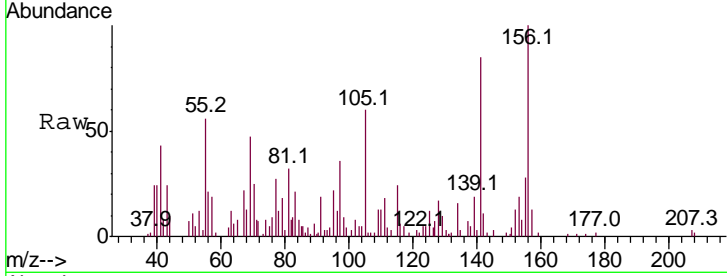




#85
 sec-Butylbenzene
 Concen: 1.015 ug/l
 RT: 13.41 min Scan# 1953
 Delta R.T. 0.01 min
 Lab File: VD066571.D
 Acq: 04 Sep 2020 18:57

Instrument : MSVOA_D
 ClientSampled : WC-1

Tgt Ion	Resp	Lower	Upper
105	100		
134	38.9	9.8	29.5#



#95
 Naphthalene
 Concen: 88.524 ug/l
 RT: 15.41 min Scan# 2293
 Delta R.T. -0.00 min
 Lab File: VD066571.D
 Acq: 04 Sep 2020 18:57

Tgt Ion	Resp	Lower	Upper
128	100		
127	13.3	10.7	16.1
129	11.1	9.1	13.7

