

Data Path : Z:\VOASRV\HPCHEM1\MSVOA D\DATA\VD090518\
 Data File : VD059965.D
 Acq On : 5 Sep 2018 13:16
 Operator : JC/SY
 Sample : J4739-02
 Misc : 7.17g/5ml/MSVOA D/SOIL
 ALS Vial : 7 Sample Multiplier: 1

Instrument :
 MSVOA_D
 ClientSampleID :
 AOC2-02-B

Quant Time: Sep 05 15:13:19 2018
 Quant Method : Z:\VOASRV\HPCHEM1\MSVOA_D\METHOD\82D082218S.M
 Quant Title : SW846 8260
 QLast Update : Thu Aug 23 03:03:08 2018
 Response via : Initial Calibration

Internal Standards	R.T.	QIon	Response	Conc	Units	Dev(Min)
1) Pentafluorobenzene	6.38	168	1362398	50.00	ug/l	-0.03
34) 1,4-Difluorobenzene	7.42	114	1891312	50.00	ug/l	-0.02
63) Chlorobenzene-d5	11.27	117	1567587	50.00	ug/l	-0.02
72) 1,4-Dichlorobenzene-d4	13.36	152	794872	50.00	ug/l	-0.01

System Monitoring Compounds

33) 1,2-Dichloroethane-d4	6.76	65	569859	49.63	ug/l	-0.03
Spiked Amount				50.000		
			Recovery	=		99.26%
35) Dibromofluoromethane	6.30	113	701658	47.32	ug/l	-0.03
Spiked Amount				50.000		
			Recovery	=		94.64%
50) Toluene-d8	9.44	98	1990795	48.38	ug/l	-0.02
Spiked Amount				50.000		
			Recovery	=		96.76%
62) 4-Bromofluorobenzene	12.42	95	719858	43.07	ug/l	-0.01
Spiked Amount				50.000		
			Recovery	=		86.14%

Target Compounds

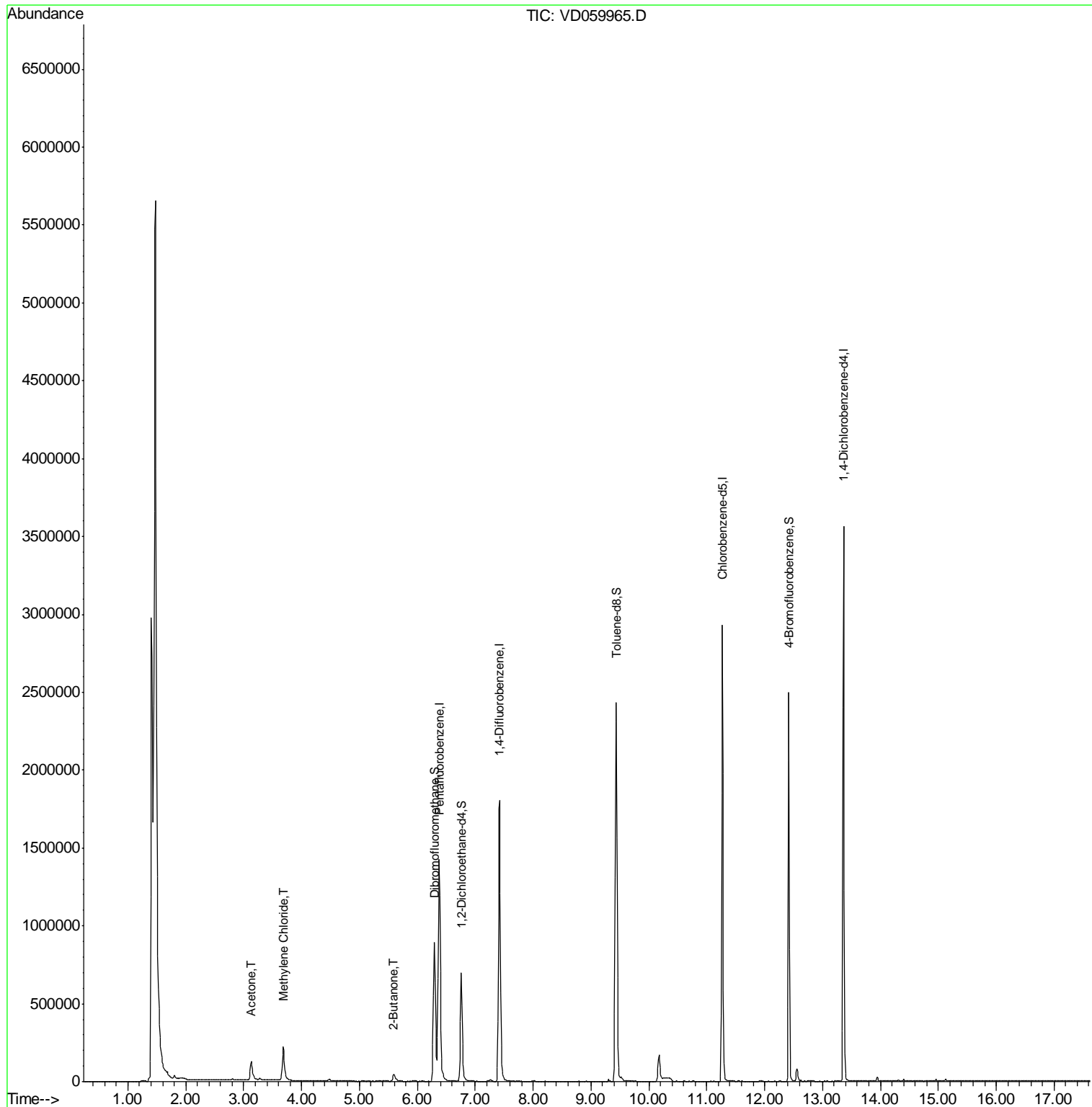
						Qvalue
16) Acetone	3.13	43	234495	112.09	ug/l	98
20) Methylene Chloride	3.68	84	124650	5.62	ug/l	97
25) 2-Butanone	5.59	43	88133	14.22	ug/l	94

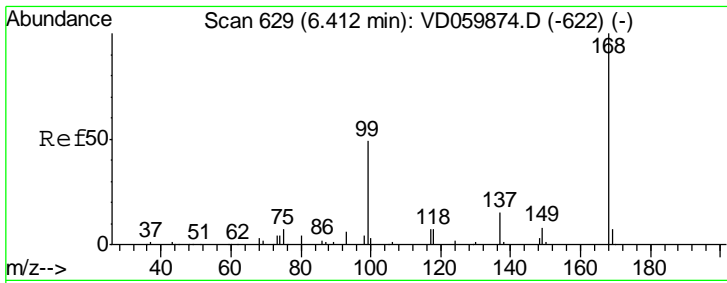
(#) = qualifier out of range (m) = manual integration (+) = signals summed

Data Path : Z:\VOASRV\HPCHEM1\MSVOA D\DATA\VD090518\
 Data File : VD059965.D
 Acq On : 5 Sep 2018 13:16
 Operator : JC/SY
 Sample : J4739-02
 Misc : 7.17g/5ml/MSVOA D/SOIL
 ALS Vial : 7 Sample Multiplier: 1

Instrument :
 MSVOA_D
 ClientSampled :
 AOC2-02-B

Quant Time: Sep 05 15:13:19 2018
 Quant Method : Z:\VOASRV\HPCHEM1\MSVOA_D\METHOD\82D082218S.M
 Quant Title : SW846 8260
 QLast Update : Thu Aug 23 03:03:08 2018
 Response via : Initial Calibration

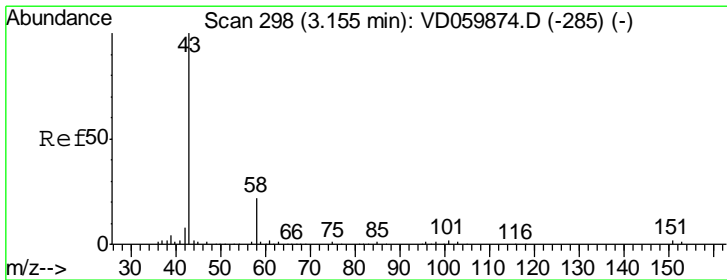
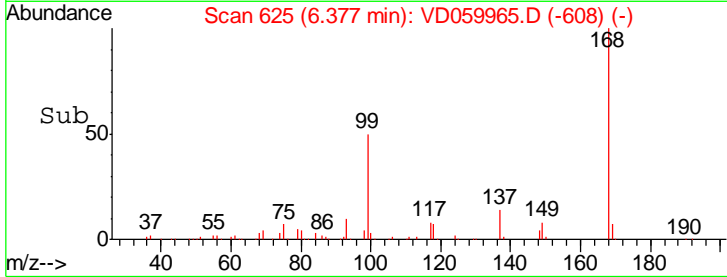
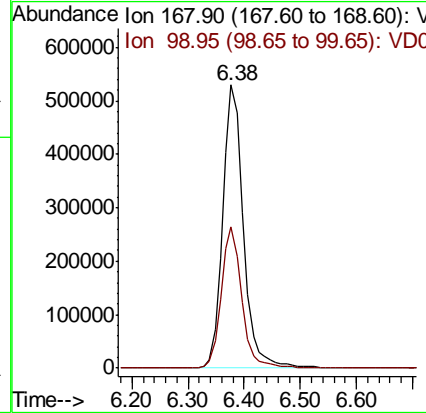
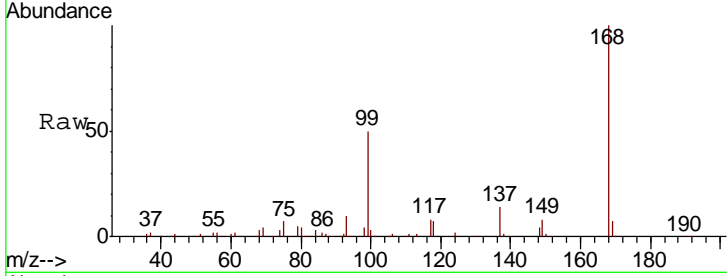




#1
 Pentafluorobenzene
 Concen: 50.00 ug/l
 RT: 6.38 min Scan# 625
 Delta R.T. -0.03 min
 Lab File: VD059965.D
 Acq: 5 Sep 2018 13:16

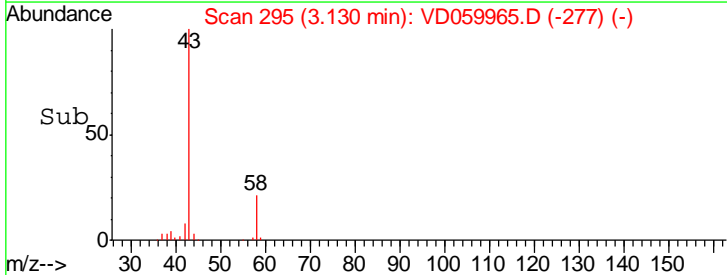
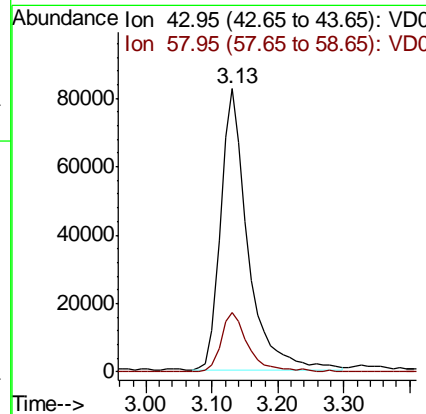
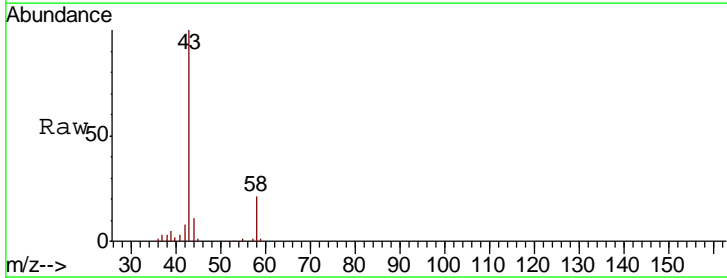
Instrument :
 MSVOA_D
 ClientSampleID :
 AOC2-02-B

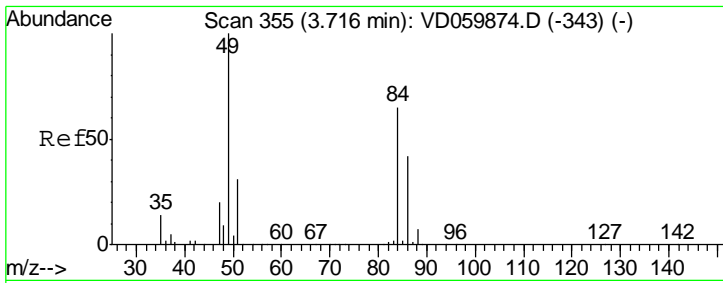
Tgt Ion	Resp	Lower	Upper
168	100		
99	49.8	42.2	63.2



#16
 Acetone
 Concen: 112.09 ug/l
 RT: 3.13 min Scan# 295
 Delta R.T. -0.02 min
 Lab File: VD059965.D
 Acq: 5 Sep 2018 13:16

Tgt Ion	Resp	Lower	Upper
43	100		
58	21.1	17.6	26.4

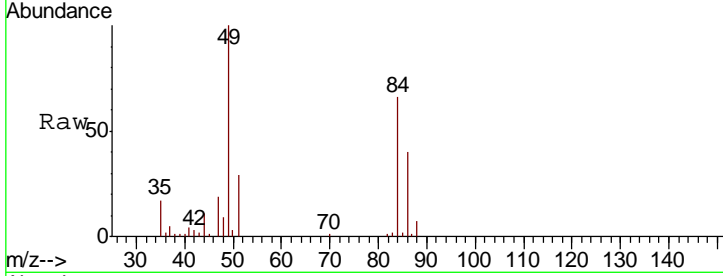




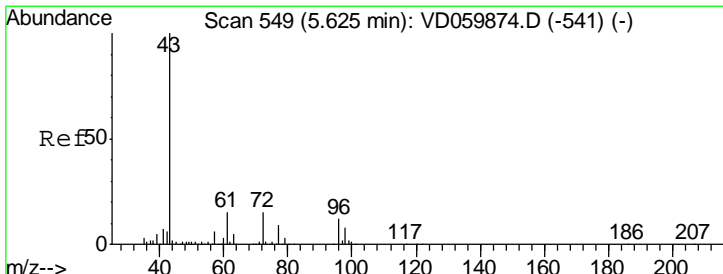
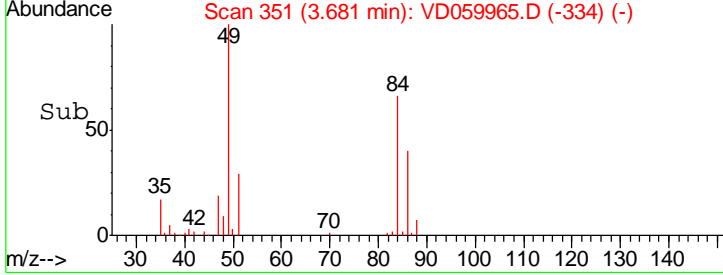
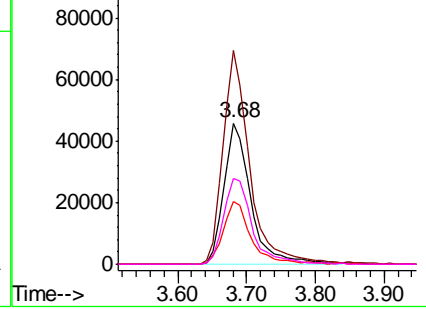
#20
 Methylene Chloride
 Concen: 5.62 ug/l
 RT: 3.68 min Scan# 351
 Delta R.T. -0.03 min
 Lab File: VD059965.D
 Acq: 5 Sep 2018 13:16

Instrument :
 MSVOA_D
ClientSampled :
 AOC2-02-B

Tgt Ion	Resp	Lower	Upper
84	124650		
49	151.0	122.6	183.8
51	44.5	38.4	57.6
86	60.3	51.5	77.3

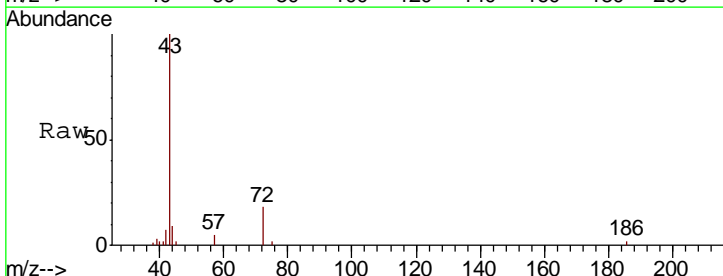


Abundance Ion 83.95 (83.65 to 84.65): VDC
 Ion 48.90 (48.60 to 49.60): VDC
 Ion 50.90 (50.60 to 51.60): VDC
 Ion 85.90 (85.60 to 86.60): VDC

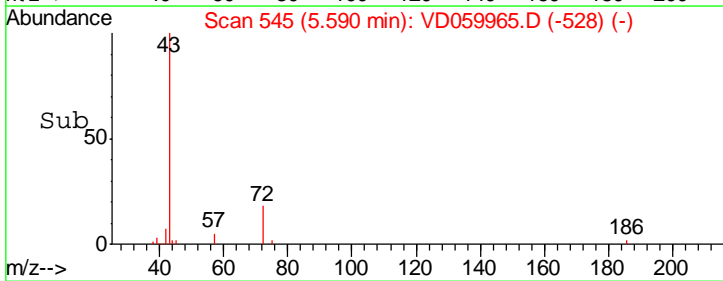
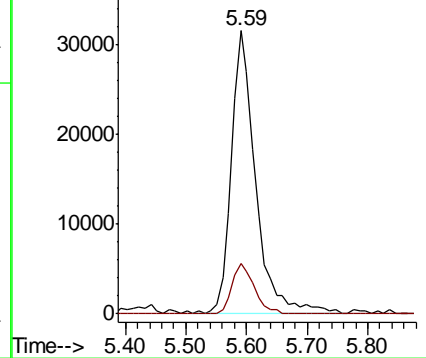


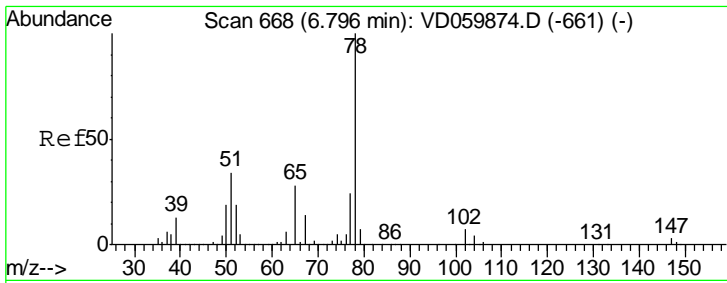
#25
 2-Butanone
 Concen: 14.22 ug/l
 RT: 5.59 min Scan# 545
 Delta R.T. -0.03 min
 Lab File: VD059965.D
 Acq: 5 Sep 2018 13:16

Tgt Ion	Resp	Lower	Upper
43	88133		
72	17.9	12.3	18.5



Abundance Ion 42.95 (42.65 to 43.65): VDC
 Ion 72.00 (71.70 to 72.70): VDC

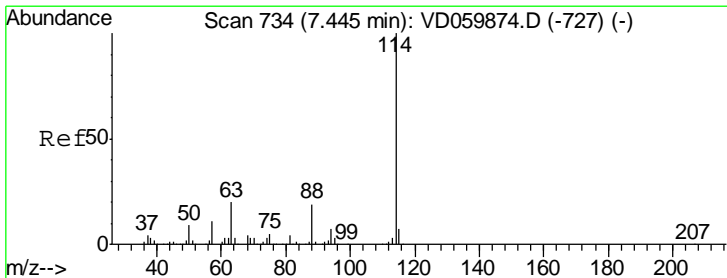
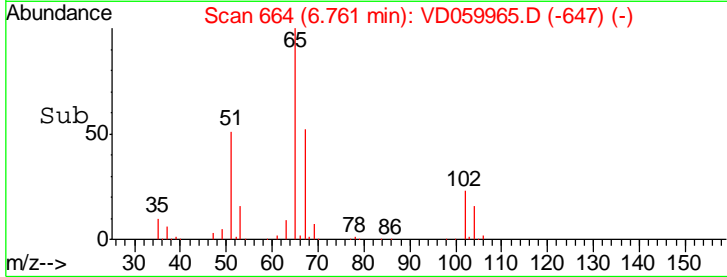
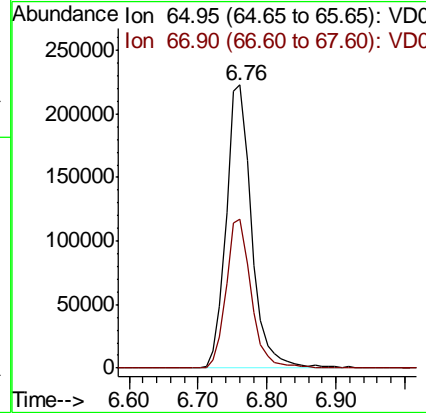
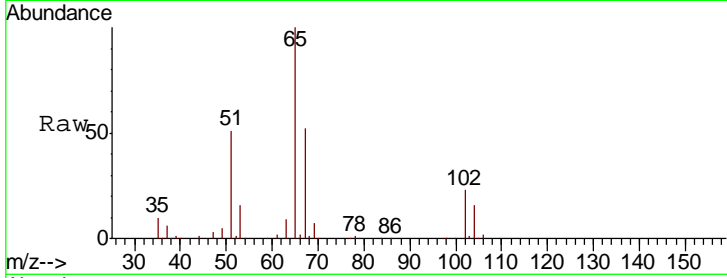




#33
 1,2-Dichloroethane-d4
 Concen: N.D. ug/l
 RT: 6.76 min Scan# 664
 Delta R.T. -0.03 min
 Lab File: VD059965.D
 Acq: 5 Sep 2018 13:16

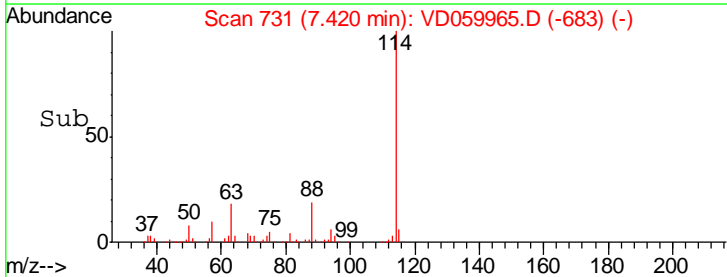
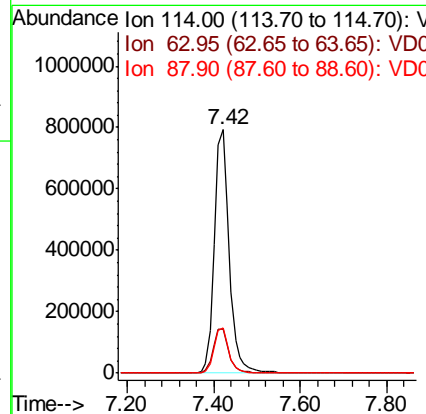
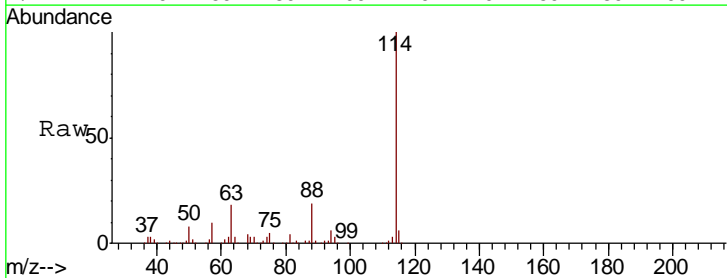
Instrument :
 MSVOA_D
 ClientSampled :
 AOC2-02-B

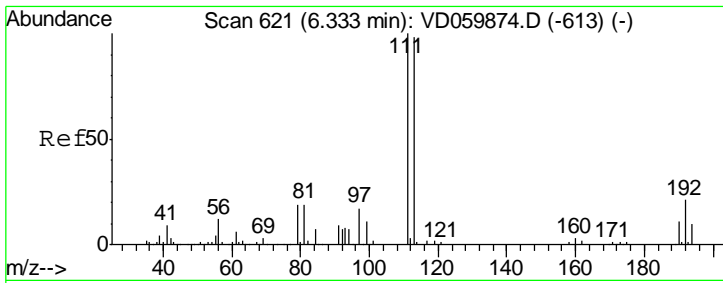
Tgt Ion	Resp	Lower	Upper
65	100		
67	52.4	0.0	103.8



#34
 1,4-Difluorobenzene
 Concen: 50.00 ug/l
 RT: 7.42 min Scan# 731
 Delta R.T. -0.02 min
 Lab File: VD059965.D
 Acq: 5 Sep 2018 13:16

Tgt Ion	Resp	Lower	Upper
114	100		
63	18.2	0.0	39.4
88	18.6	0.0	37.6

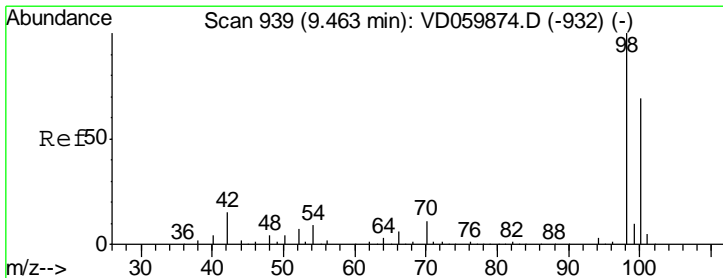
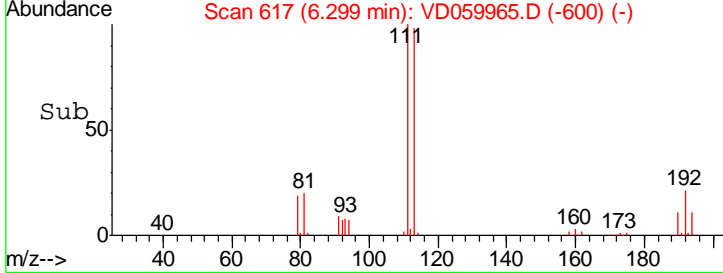
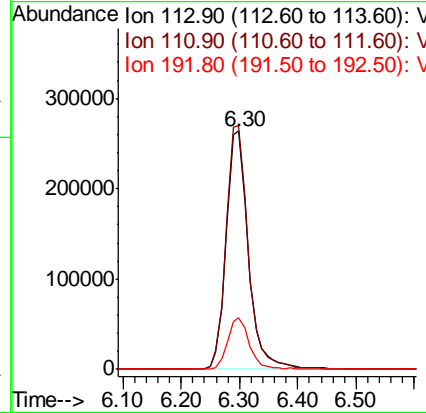
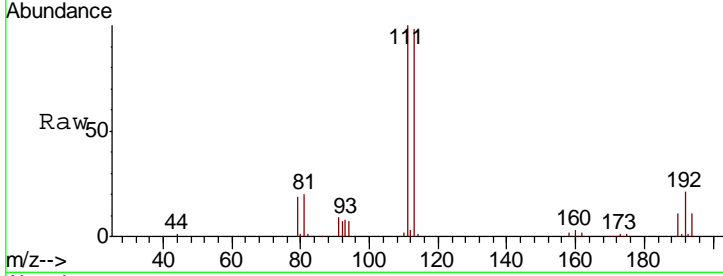




#35
 Dibromofluoromethane
 Concen: 50.00 ug/l
 RT: 6.30 min Scan# 617
 Delta R.T. -0.03 min
 Lab File: VD059965.D
 Acq: 5 Sep 2018 13:16

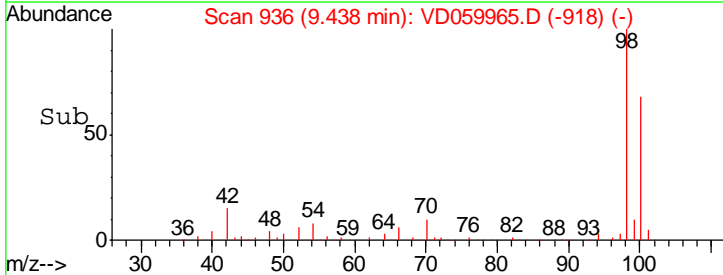
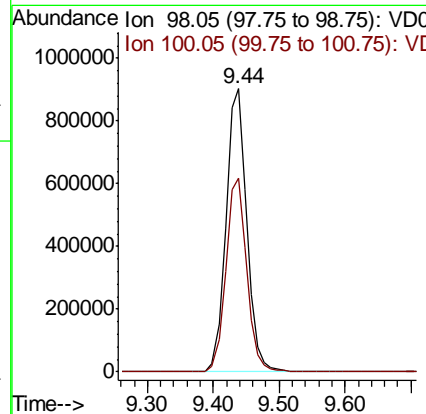
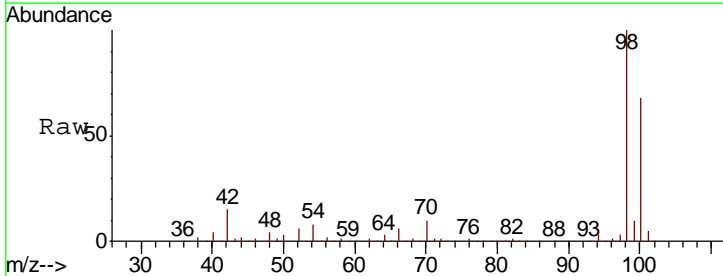
Instrument : MSVOA_D
 ClientSampled : AOC2-02-B

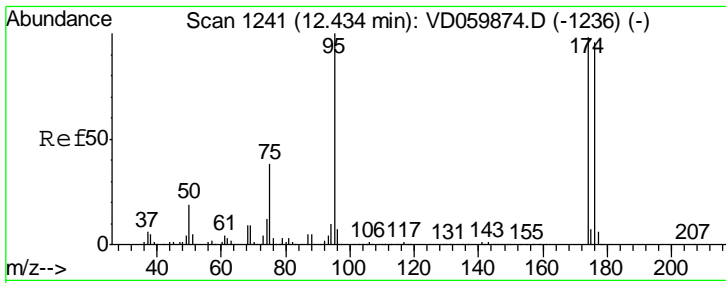
Tgt Ion	Resp	Lower	Upper
113	701658		
111	102.1	81.4	122.2
192	21.7	17.0	25.6



#50
 Toluene-d8
 Concen: N.D. ug/l
 RT: 9.44 min Scan# 936
 Delta R.T. -0.02 min
 Lab File: VD059965.D
 Acq: 5 Sep 2018 13:16

Tgt Ion	Resp	Lower	Upper
98	1990795		
100	68.5	55.8	83.6

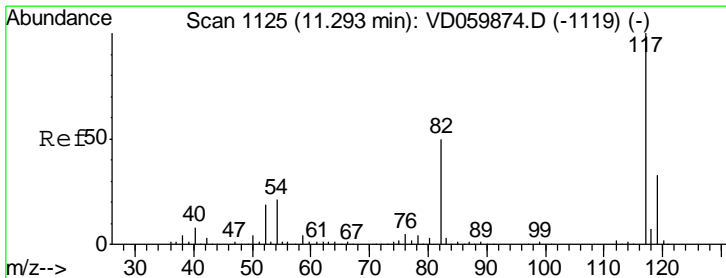
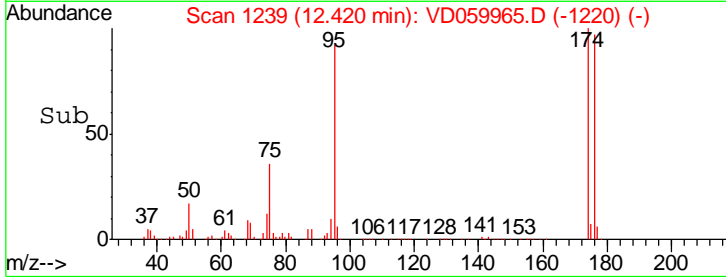
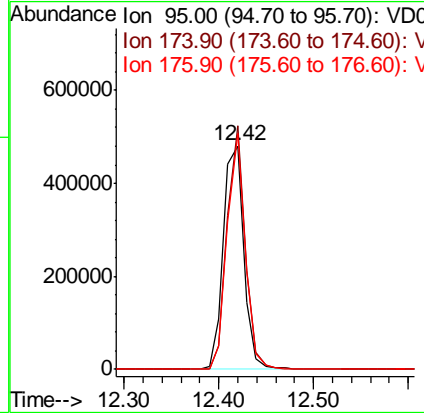
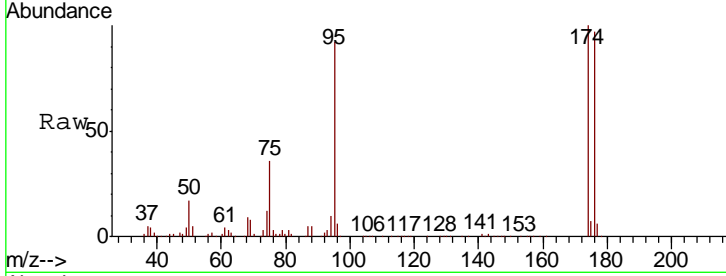




#62
 4-Bromofluorobenzene
 Concen: N.D. ug/l
 RT: 12.42 min Scan# 1239
 Delta R.T. -0.01 min
 Lab File: VD059965.D
 Acq: 5 Sep 2018 13:16

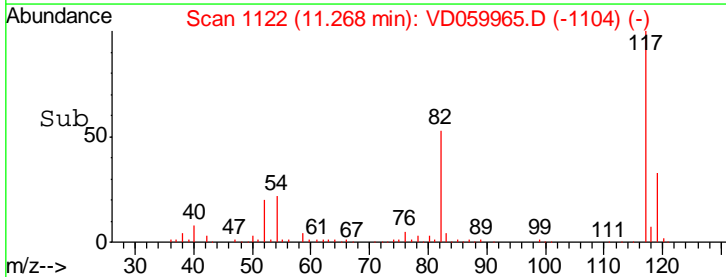
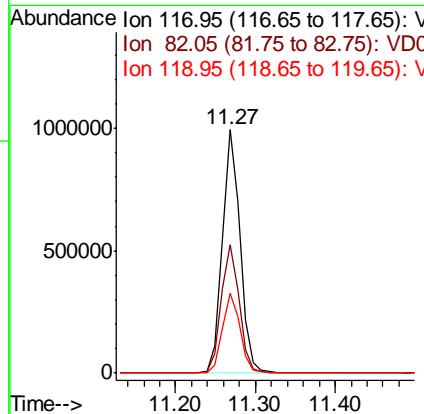
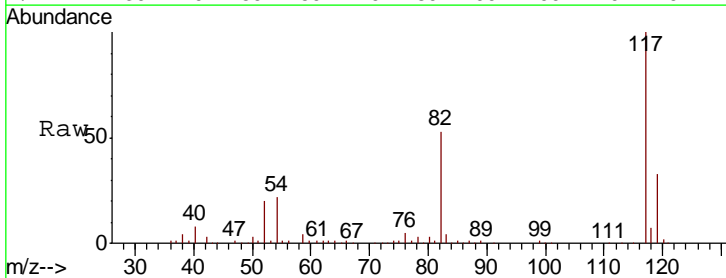
Instrument : MSVOA_D
 ClientSampled : AOC2-02-B

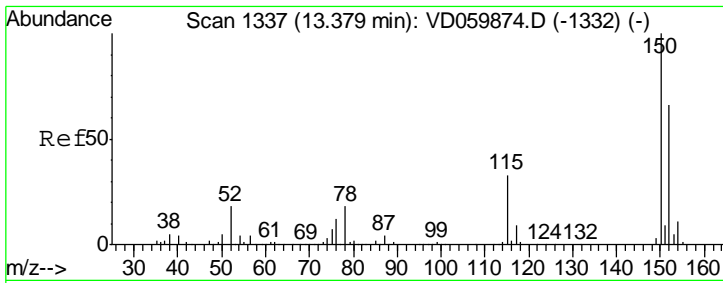
Tgt Ion	Resp	Lower	Upper
95	719858		
174	109.1	0.0	195.6
176	105.8	0.0	191.2



#63
 Chlorobenzene-d5
 Concen: 50.00 ug/l
 RT: 11.27 min Scan# 1122
 Delta R.T. -0.02 min
 Lab File: VD059965.D
 Acq: 5 Sep 2018 13:16

Tgt Ion	Resp	Lower	Upper
117	1567587		
82	52.7	40.1	60.1
119	32.8	26.7	40.1





#72
 1,4-Dichlorobenzene-d4
 Concen: 50.00 ug/l
 RT: 13.36 min Scan# 1335
 Delta R.T. -0.01 min
 Lab File: VD059965.D
 Acq: 5 Sep 2018 13:16

Instrument : MSVOA_D
 ClientSampled : AOC2-02-B

Tot Ion	Ratio	Lower	Upper
152	100		
115	49.2	25.7	77.0
150	153.5	0.0	310.2

