

Data Path : Z:\VOASRV\HPCHEM1\MSVOA D\DATA\VD090518\
 Data File : VD059966.D
 Acq On : 5 Sep 2018 13:45
 Operator : JC/SY
 Sample : J4739-03
 Misc : 8.28g/5ml/MSVOA D/SOIL
 ALS Vial : 8 Sample Multiplier: 1

Instrument :
 MSVOA_D
 ClientSampleId :
 AOC2-02-C

Integration Parameters: RTEINT.P

Integrator: RTE
 Smoothing : ON Filtering: 5
 Sampling : 1 Min Area: 3 % of largest Peak
 Start Thrs: 0.2 Max Peaks: 100
 Stop Thrs : 0 Peak Location: TOP

If leading or trailing edge < 100 prefer < Baseline drop else tangent >
 Peak separation: 5

Method : Z:\VOASRV\HPCHEM1\MSVOA_D\METHOD\82D082218S.M
 Title : SW846 8260

Signal : TIC

peak #	R.T. min	first scan	max scan	last scan	PK TY	peak height	corr. area	corr. % max.	% of total
1	1.406	117	120	123	rVV	2279095	4696422	44.39%	10.251%
2	1.475	123	127	146	rVB	3582145	10581053	100.00%	23.095%
3	3.128	290	295	304	rBV	107059	312200	2.95%	0.681%
4	3.679	346	351	367	rVB	234162	720603	6.81%	1.573%
5	5.598	541	546	558	rBV2	36949	159227	1.50%	0.348%
6	6.297	610	617	621	rBV	869621	2246743	21.23%	4.904%
7	6.375	621	625	643	rVB	1246197	3111329	29.40%	6.791%
8	6.759	658	664	681	rBV	743643	1833835	17.33%	4.003%
9	7.418	725	731	744	rBV	1595239	3731684	35.27%	8.145%
10	9.436	930	936	942	rBV	2375799	5230996	49.44%	11.418%
11	9.524	942	945	957	rVB	356010	758848	7.17%	1.656%
12	10.174	1005	1011	1017	rBV	187623	495892	4.69%	1.082%
13	11.266	1118	1122	1132	rBV	2573776	4149283	39.21%	9.057%
14	12.418	1235	1239	1248	rBV	2612542	3552808	33.58%	7.755%
15	12.555	1250	1253	1259	rVB	99846	190330	1.80%	0.415%
16	13.362	1332	1335	1343	rBV	3170173	4043473	38.21%	8.826%

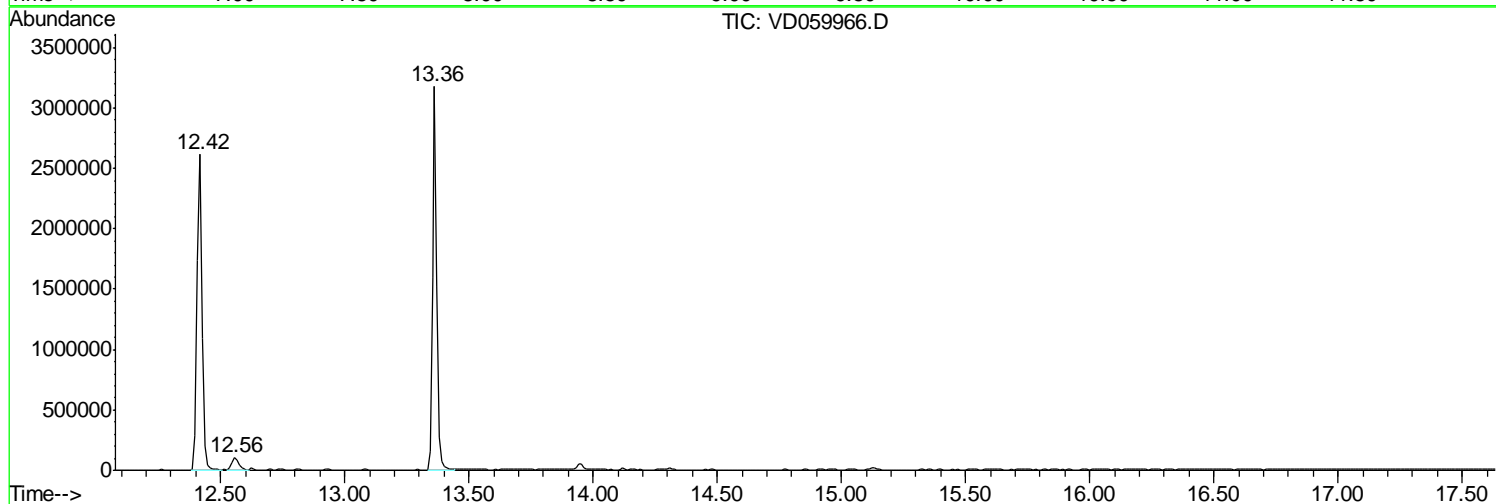
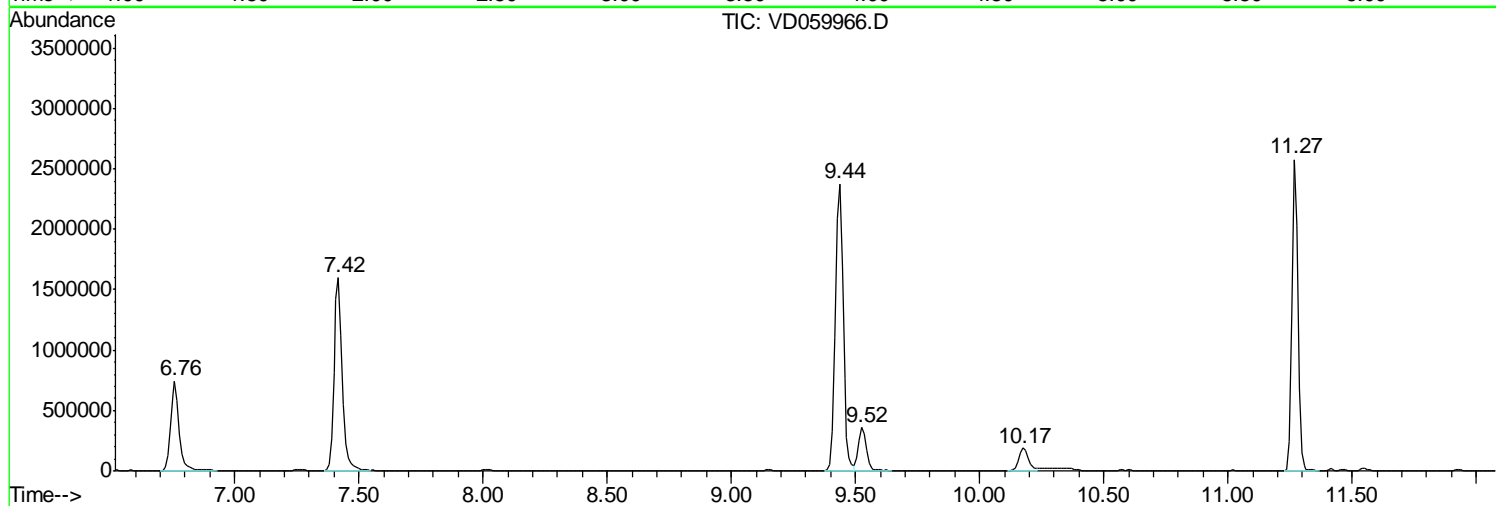
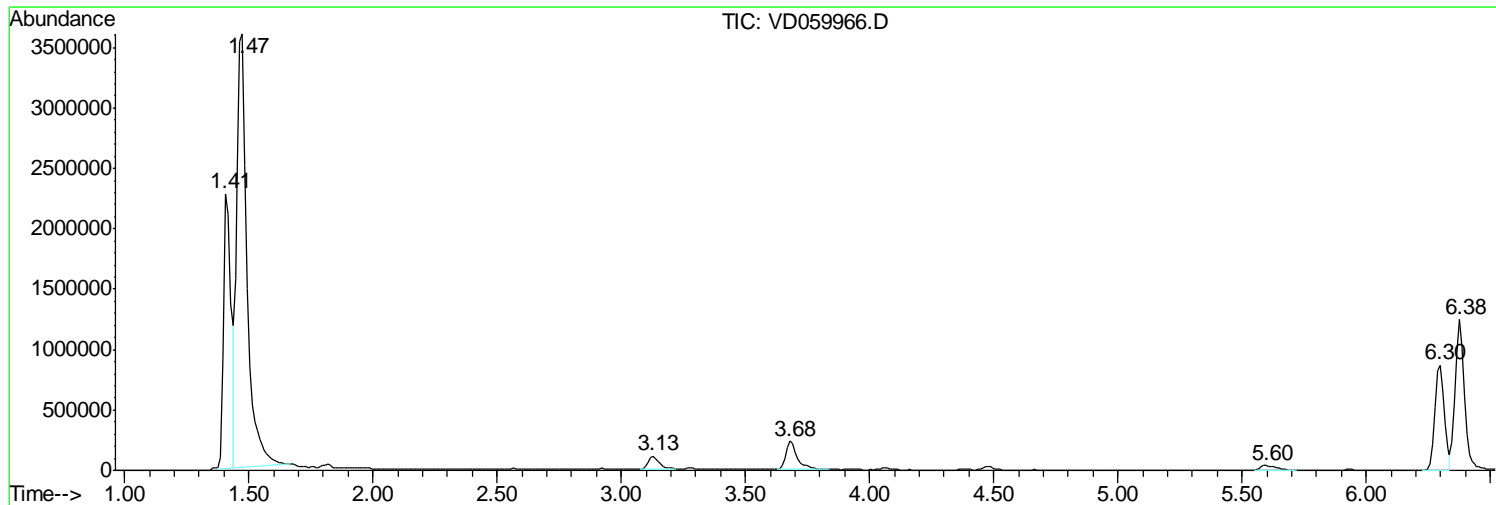
Sum of corrected areas: 45814726

Data Path : Z:\VOASRV\HPCHEM1\MSVOA D\DATA\VD090518\
Data File : VD059966.D
Acq On : 5 Sep 2018 13:45
Operator : JC/SY
Sample : J4739-03
Misc : 8.28g/5ml/MSVOA D/SOIL
ALS Vial : 8 Sample Multiplier: 1

Instrument :
MSVOA_D
ClientSampled :
AOC2-02-C

Quant Method : Z:\VOASRV\HPCHEM1\MSVOA_D\METHOD\82D082218S.M
Quant Title : SW846 8260

TIC Library : C:\DATABASE\NIST11.L
TIC Integration Parameters: LSCINT.P



Data Path : Z:\VOASRV\HPCHEM1\MSVOA_D\DATA\VD090518\
Data File : VD059966.D
Acq On : 5 Sep 2018 13:45
Operator : JC/SY
Sample : J4739-03
Misc : 8.28g/5ml/MSVOA_D/SOIL
ALS Vial : 8 Sample Multiplier: 1

Instrument :
MSVOA_D
ClientSampleID :
AOC2-02-C

Quant Method : Z:\VOASRV\HPCHEM1\MSVOA_D\METHOD\82D082218S.M
Quant Title : SW846 8260

TIC Library : C:\DATABASE\NIST11.L
TIC Integration Parameters: LSCINT.P

Peak Number 1 Cyclotrisiloxane, hexamethyl- Concentration Rank 3

R.T.	EstConc	Area	Relative to ISTD	R.T.
10.17	5.98 ug/l	495892	Chlorobenzene-d5	11.27

Hit#	of	Tentative ID	MW	MolForm	CAS#	Qual
1	5	Cyclotrisiloxane, hexamethyl-	222	C6H18O3Si3	000541-05-9	91
2		Arsenous acid, tris(trimethylsil...	342	C9H27AsO3Si3	055429-29-3	64
3		Benzo[h]quinoline, 2,4-dimethyl-	207	C15H13N	000605-67-4	45
4		1H-Indole, 5-methyl-2-phenyl-	207	C15H13N	013228-36-9	38
5		1H-Indole, 1-methyl-2-phenyl-	207	C15H13N	003558-24-5	38

Data Path : Z:\VOASRV\HPCHEM1\MSVOA_D\DATA\VD090518\
Data File : VD059966.D
Acq On : 5 Sep 2018 13:45
Operator : JC/SY
Sample : J4739-03
Misc : 8.28g/5ml/MSVOA_D/SOIL
ALS Vial : 8 Sample Multiplier: 1

Instrument :
MSVOA_D
ClientSampleId :
AOC2-02-C

Quant Method : Z:\VOASRV\HPCHEM1\MSVOA_D\METHOD\82D082218S.M
Quant Title : SW846 8260

TIC Library : C:\DATABASE\NIST11.L
TIC Integration Parameters: LSCINT.P

TIC Top Hit name	RT	EstConc	Units	Response	--Internal Standard--			
					#	RT	Resp	Conc
Cyclotrisiloxane,...	10.17	6.0	ug/l	495892	3	11.27	4149280	50.0