

Data Path : Z:\VOASRV\HPCHEM1\MSVOA D\DATA\VD090920\
 Data File : VD066604.D
 Acq On : 10 Sep 2020 02:38
 Operator : VA/SY
 Sample : L3929-01
 Misc : 7.69G/5.00ml/MSVOA D/SOIL
 ALS Vial : 36 Sample Multiplier: 1

Instrument :
 MSVOA_D
 ClientSampleId :
 LG-STOCK

Quant Time: Sep 10 03:43:28 2020
 Quant Method : Z:\VOASRV\HPCHEM1\MSVOA_D\METHOD\82D090320S.M
 Quant Title : SW846 8260
 QLast Update : Fri Sep 04 01:57:04 2020
 Response via : Initial Calibration

Internal Standards	R.T.	QIon	Response	Conc	Units	Dev(Min)
1) Pentafluorobenzene	7.98	168	329130	50.00	ug/l	0.00
34) 1,4-Difluorobenzene	8.86	114	652650	50.00	ug/l	0.00
63) Chlorobenzene-d5	11.64	117	622219	50.00	ug/l	0.00
72) 1,4-Dichlorobenzene-d4	13.57	152	265281	50.00	ug/l	0.00

System Monitoring Compounds

33) 1,2-Dichloroethane-d4	8.33	65	246426	61.88	ug/l	0.00
Spiked Amount						
						Recovery = 123.76%
35) Dibromofluoromethane	7.91	113	227146	51.59	ug/l	0.00
Spiked Amount						
						Recovery = 103.18%
50) Toluene-d8	10.34	98	812861	51.65	ug/l	0.00
Spiked Amount						
						Recovery = 103.30%
62) 4-Bromofluorobenzene	12.63	95	276697	53.03	ug/l	0.00
Spiked Amount						
						Recovery = 106.06%

Target Compounds

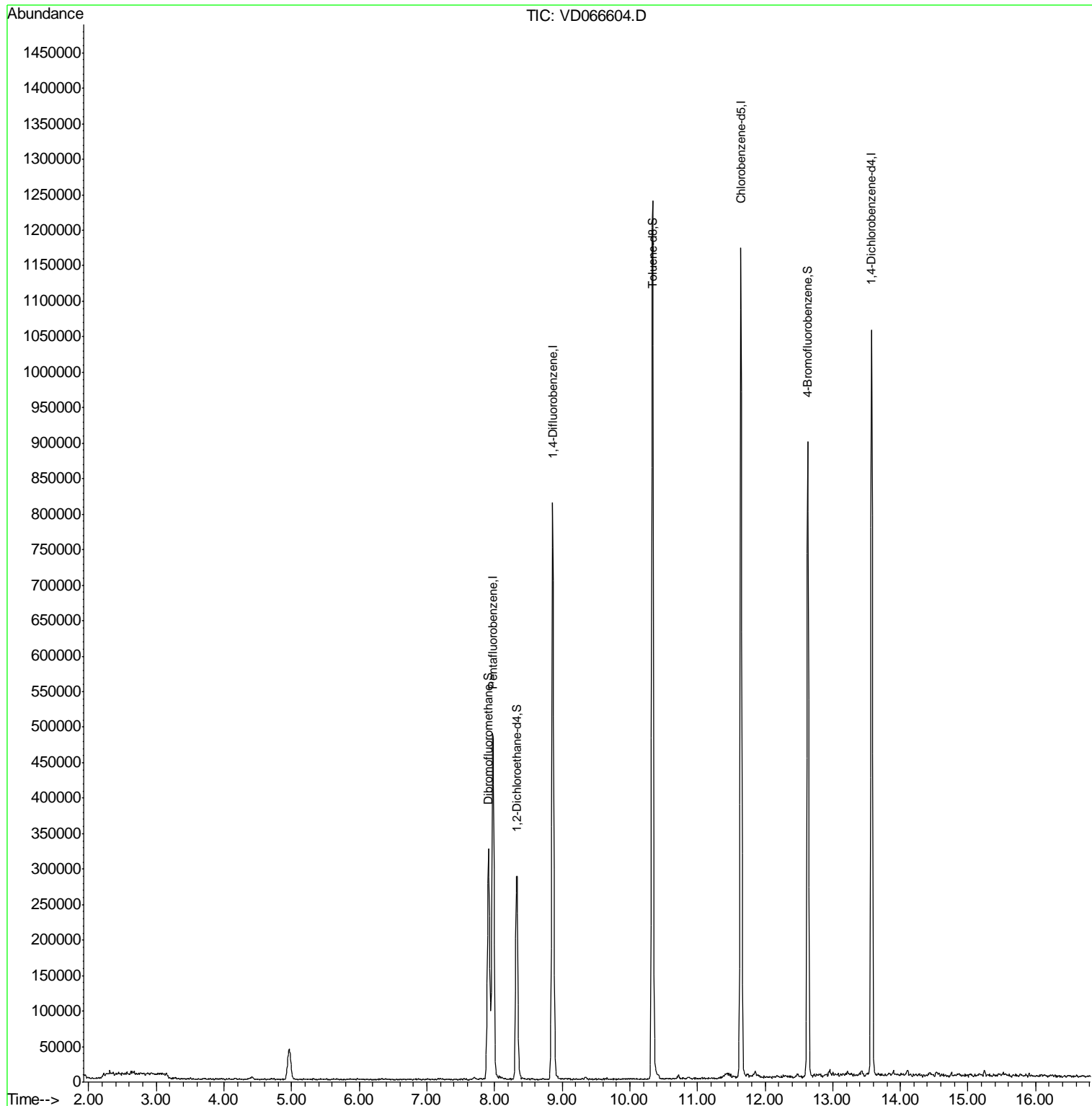
Qvalue

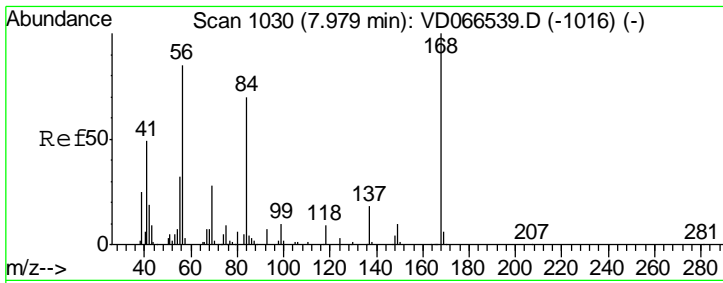
(#) = qualifier out of range (m) = manual integration (+) = signals summed

Data Path : Z:\VOASRV\HPCHEM1\MSVOA D\DATA\VD090920\
 Data File : VD066604.D
 Acq On : 10 Sep 2020 02:38
 Operator : VA/SY
 Sample : L3929-01
 Misc : 7.69G/5.00ml/MSVOA D/SOIL
 ALS Vial : 36 Sample Multiplier: 1

Instrument :
 MSVOA_D
 Client Sampled :
 LG-STOCK

Quant Time: Sep 10 03:43:28 2020
 Quant Method : Z:\VOASRV\HPCHEM1\MSVOA_D\METHOD\82D090320S.M
 Quant Title : SW846 8260
 QLast Update : Fri Sep 04 01:57:04 2020
 Response via : Initial Calibration

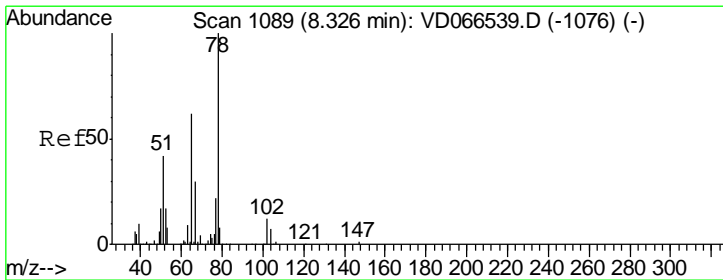
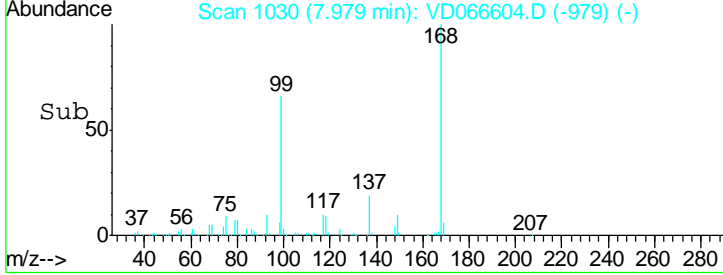
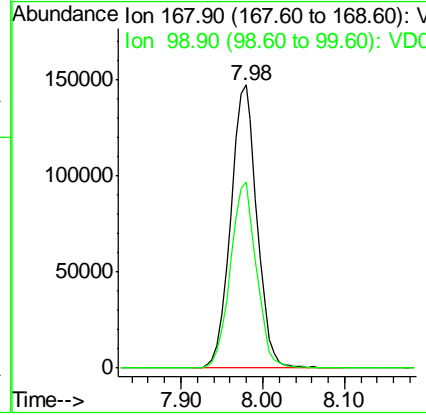
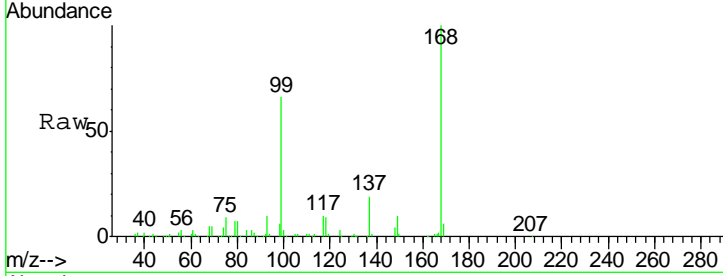




#1
 Pentafluorobenzene
 Concen: 50.000 ug/l
 RT: 7.98 min Scan# 1030
 Delta R.T. 0.00 min
 Lab File: VD066604.D
 Acq: 10 Sep 2020 02:38

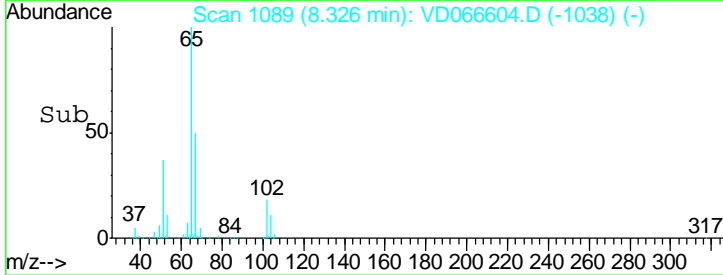
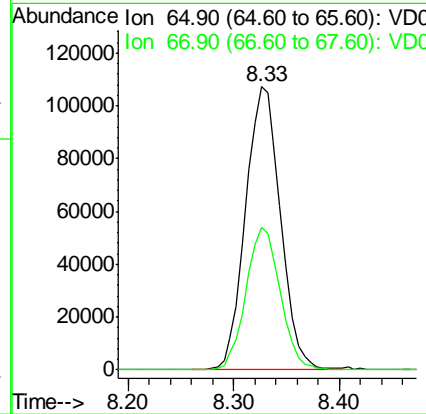
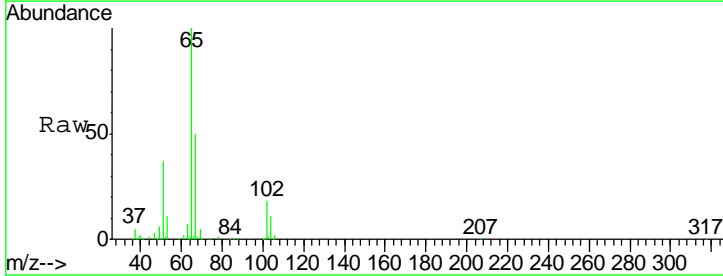
Instrument :
 MSVOA_D
ClientSampled :
 LG-STOCK

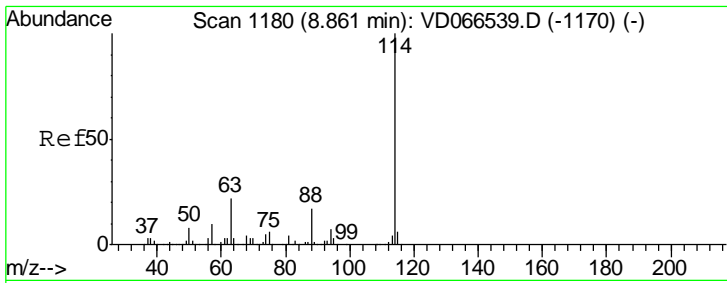
Tgt Ion	Resp	Lower	Upper
168	100		
99	65.8	50.5	75.7



#33
 1,2-Dichloroethane-d4
 Concen: 61.882 ug/l
 RT: 8.33 min Scan# 1089
 Delta R.T. 0.00 min
 Lab File: VD066604.D
 Acq: 10 Sep 2020 02:38

Tgt Ion	Resp	Lower	Upper
65	100		
67	49.2	0.0	102.8

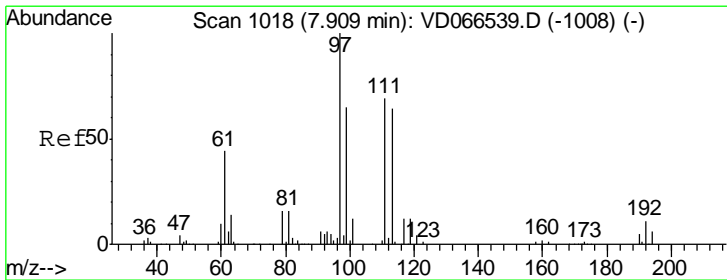
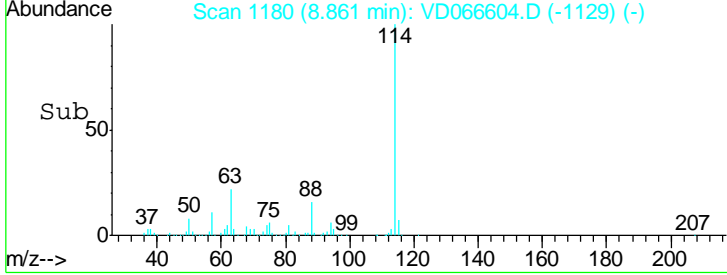
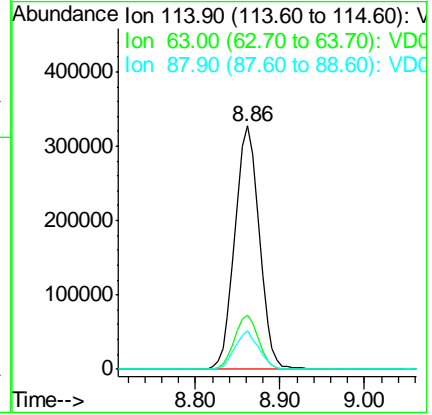
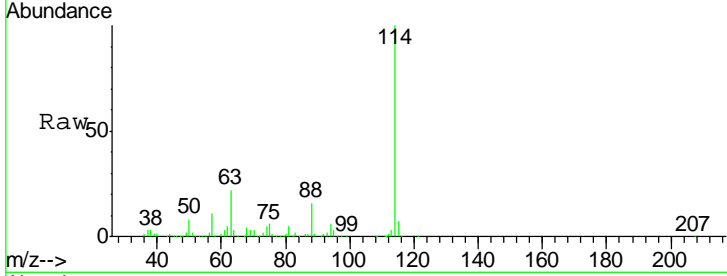




#34
 1,4-Difluorobenzene
 Concen: 50.000 ug/l
 RT: 8.86 min Scan# 1180
 Delta R.T. 0.00 min
 Lab File: VD066604.D
 Acq: 10 Sep 2020 02:38

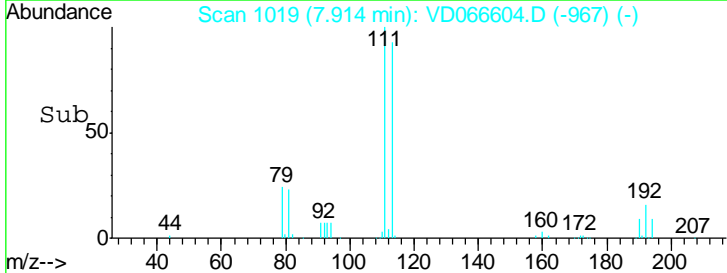
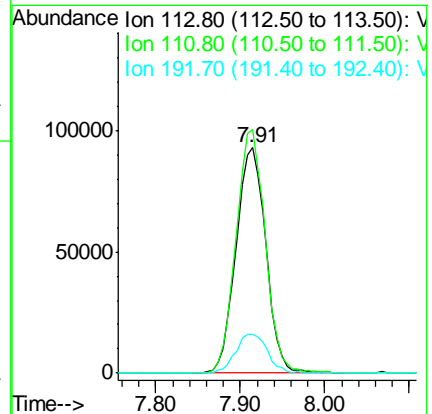
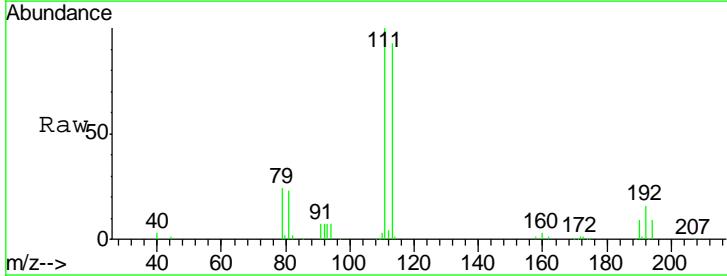
Instrument :
 MSVOA_D
 ClientSampled :
 LG-STOCK

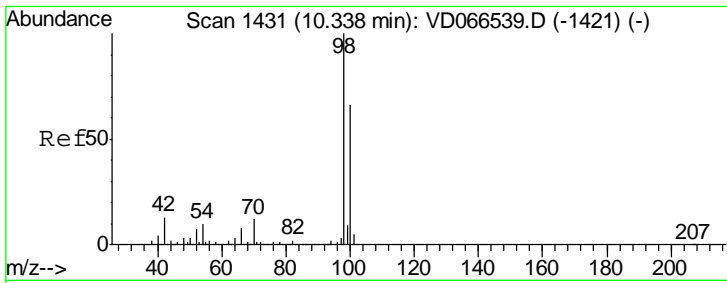
Tgt Ion	Resp	Lower	Upper
114	100		
63	22.2	0.0	43.2
88	16.0	0.0	33.2



#35
 Dibromofluoromethane
 Concen: 51.591 ug/l
 RT: 7.91 min Scan# 1019
 Delta R.T. 0.01 min
 Lab File: VD066604.D
 Acq: 10 Sep 2020 02:38

Tgt Ion	Resp	Lower	Upper
113	100		
111	105.4	83.2	124.8
192	18.3	13.7	20.5

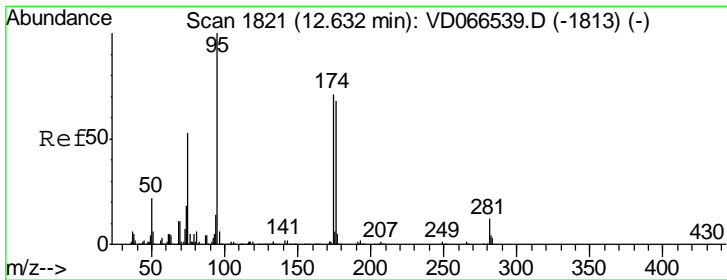
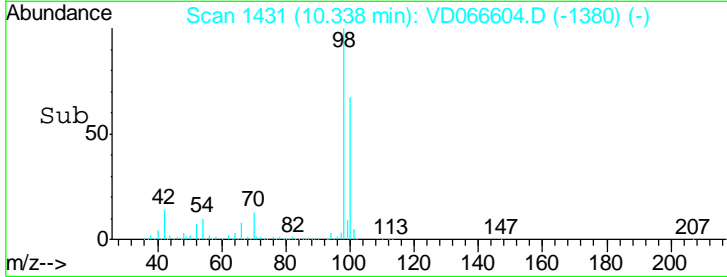
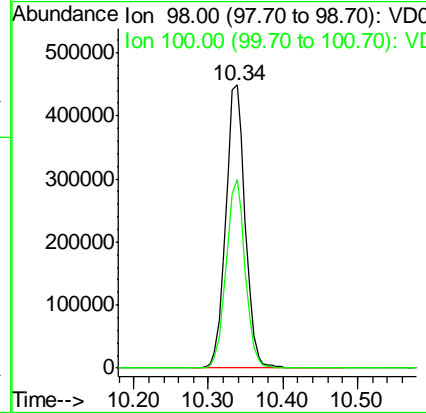
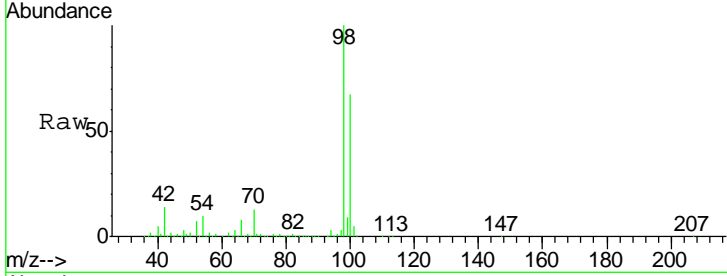




#50
 Toluene-d8
 Concen: 51.655 ug/l
 RT: 10.34 min Scan# 1431
 Delta R.T. 0.00 min
 Lab File: VD066604.D
 Acq: 10 Sep 2020 02:38

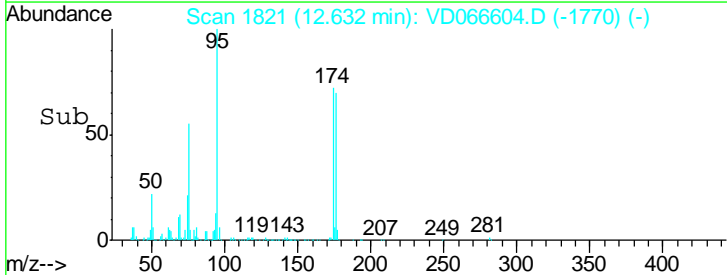
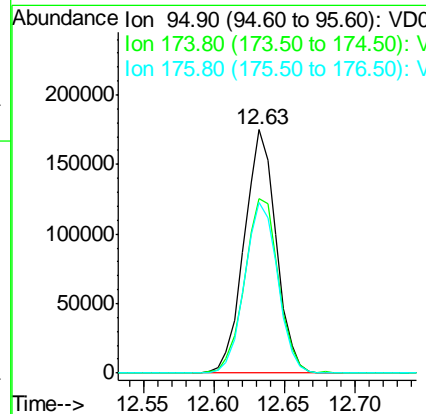
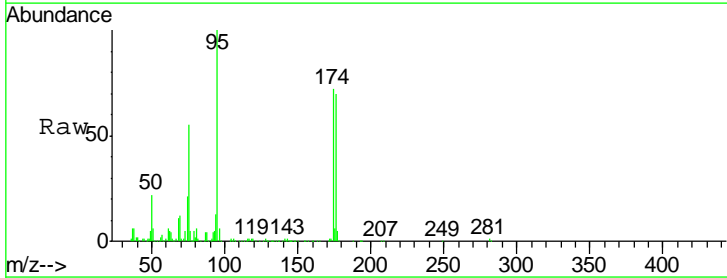
Instrument :
 MSVOA_D
 ClientSampled :
 LG-STOCK

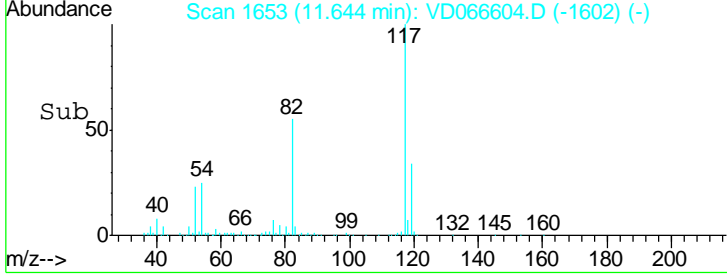
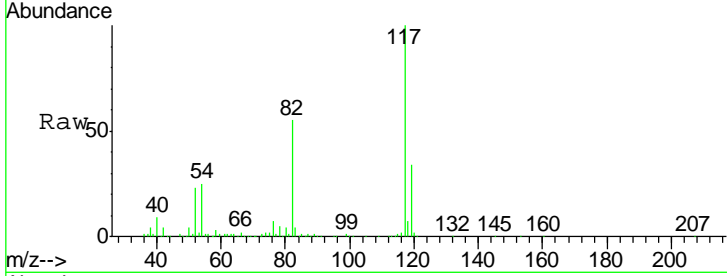
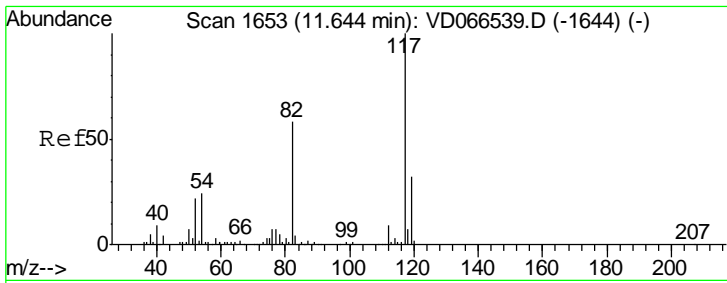
Tgt Ion	Resp	Lower	Upper
98	812861		
100	65.4	52.9	79.3



#62
 4-Bromofluorobenzene
 Concen: 53.027 ug/l
 RT: 12.63 min Scan# 1821
 Delta R.T. 0.00 min
 Lab File: VD066604.D
 Acq: 10 Sep 2020 02:38

Tgt Ion	Resp	Lower	Upper
95	276697		
174	76.2	0.0	155.8
176	72.3	0.0	148.6

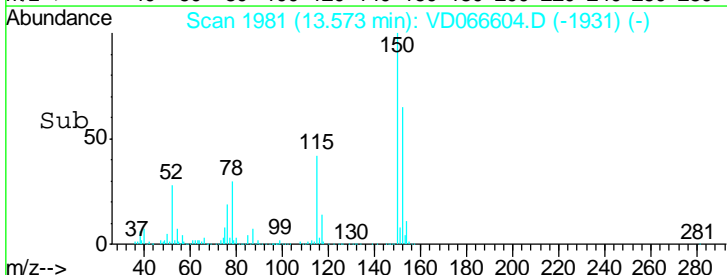
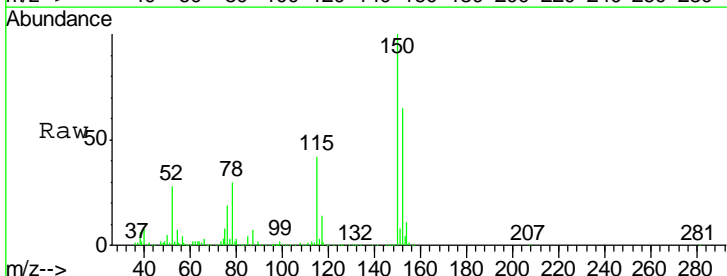
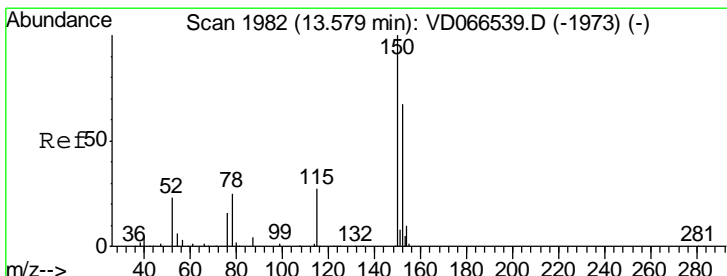
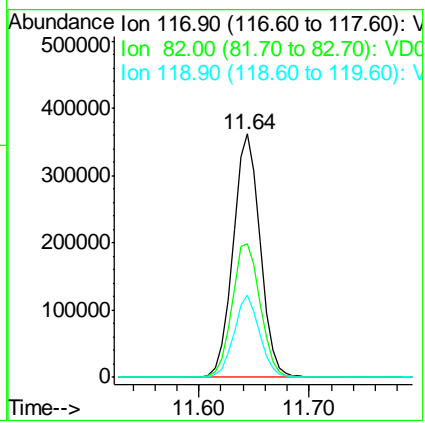




#63
 Chlorobenzene-d5
 Concen: 50.000 ug/l
 RT: 11.64 min Scan# 1653
 Delta R.T. 0.00 min
 Lab File: VD066604.D
 Acq: 10 Sep 2020 02:38

Instrument : MSVOA_D
 ClientSampled : LG-STOCK

Tgt Ion	Resp	Lower	Upper
117	622219		
82	55.0	46.2	69.2
119	33.9	25.8	38.8



#72
 1,4-Dichlorobenzene-d4
 Concen: 50.000 ug/l
 RT: 13.57 min Scan# 1981
 Delta R.T. -0.01 min
 Lab File: VD066604.D
 Acq: 10 Sep 2020 02:38

Tgt Ion	Resp	Lower	Upper
152	265281		
115	63.0	30.4	91.2
150	154.0	0.0	345.8

