

Data Path : Z:\voasrv\HPCHEM1\MSVOA_D\Data\VD091321\
 Data File : VD070339.D
 Acq On : 13 Sep 2021 21:13
 Operator : VA/SY
 Sample : M3684-15
 Misc : 5.66G/5.00ml/MSVOA_D/SOIL
 ALS Vial : 23 Sample Multiplier: 1

Instrument :
 MSVOA_D
 ClientSampleId :
 A008145

Quant Time: Sep 14 00:57:34 2021
 Quant Method : Z:\voasrv\HPCHEM1\MSVOA_D\Method\82D090821S.M
 Quant Title : SW846 8260
 QLast Update : Thu Sep 09 03:07:09 2021
 Response via : Initial Calibration

Compound	R.T.	QIon	Response	Conc	Units	Dev(Min)

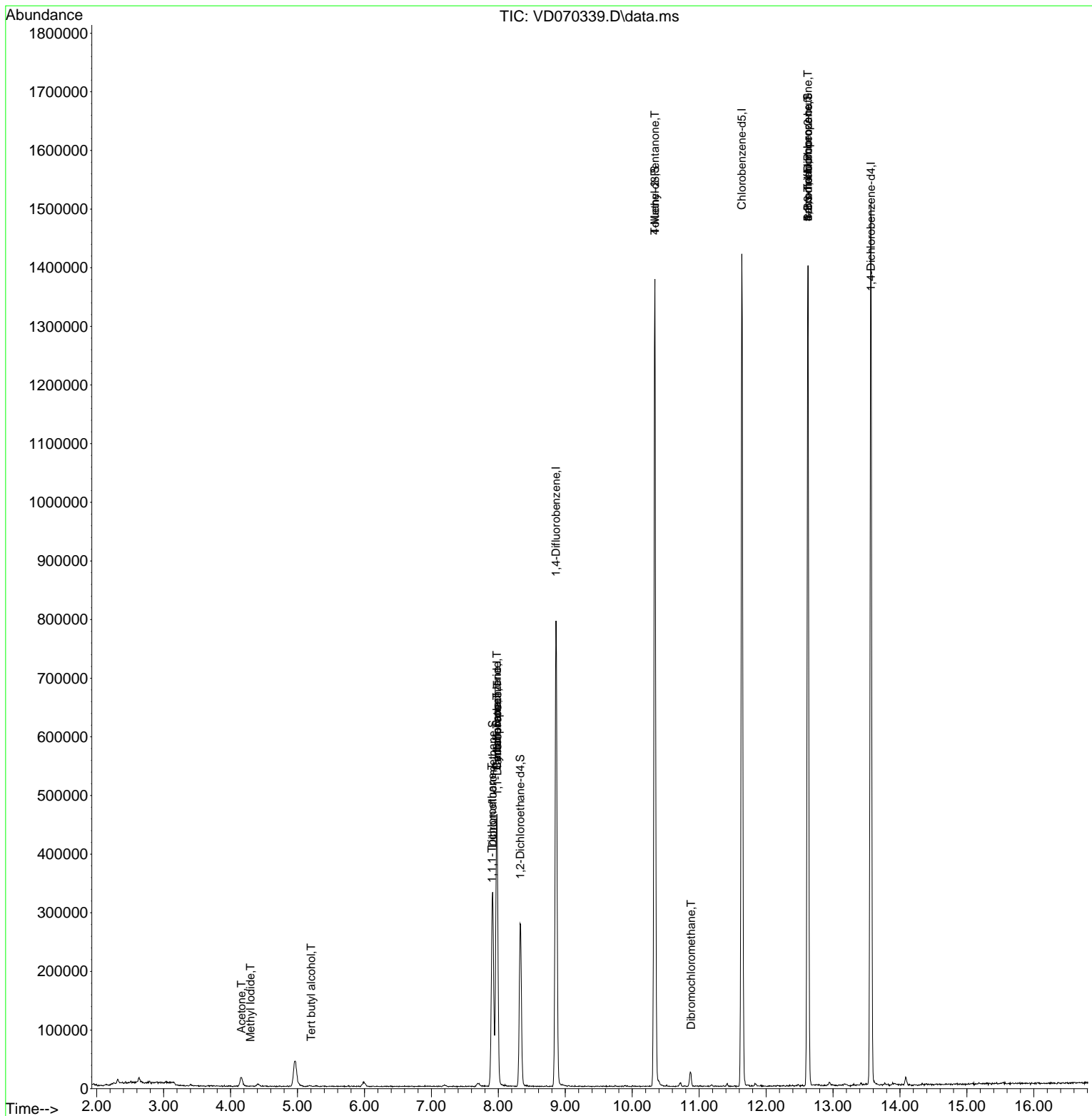
Internal Standards						
1) Pentafluorobenzene	7.979	168	325200	50.000	ug/l	0.00
34) 1,4-Difluorobenzene	8.861	114	680117	50.000	ug/l	0.00
63) Chlorobenzene-d5	11.638	117	815712	50.000	ug/l	0.00
72) 1,4-Dichlorobenzene-d4	13.567	152	392405	50.000	ug/l	0.00
System Monitoring Compounds						
33) 1,2-Dichloroethane-d4	8.326	65	219829	52.646	ug/l	0.00
Spiked Amount	50.000	Range	50 - 163	Recovery	=	105.300%
35) Dibromofluoromethane	7.914	113	236362	48.823	ug/l	0.00
Spiked Amount	50.000	Range	54 - 147	Recovery	=	97.640%
50) Toluene-d8	10.338	98	919942	52.338	ug/l	0.00
Spiked Amount	50.000	Range	49 - 140	Recovery	=	104.680%
62) 4-Bromofluorobenzene	12.626	95	398027	64.794	ug/l	0.00
Spiked Amount	50.000	Range	25 - 144	Recovery	=	129.580%
Target Compounds						
					Qvalue	
2) Dichlorodifluoromethane	1.991	85	325	Below Cal	#	43
3) Chloromethane	2.209	50	744	Below Cal	#	54
5) Bromomethane	2.768	94	486	Below Cal	#	30
6) Chloroethane	2.950	64	69	Below Cal	#	11
10) Methyl Iodide	4.297	142	121	1.058	ug/l #	83
11) Tert butyl alcohol	5.203	59	579	1.226	ug/l #	100
16) Acetone	4.162	43	27455	36.828	ug/l #	87
18) Methyl Acetate	4.726	43	57	Below Cal	#	48
31) Cyclohexane	7.979	56	7914	1.100	ug/l #	1
32) 1,1,1-Trichloroethane	7.903	97	12322	1.695	ug/l	94
36) 1,1-Dichloropropene	7.985	75	31433	4.324	ug/l #	48
38) Carbon Tetrachloride	7.979	117	36121	5.024	ug/l #	15
51) 4-Methyl-2-Pentanone	10.338	43	3796	1.460	ug/l #	1
60) Dibromochloromethane	10.879	129	4975	1.080	ug/l #	11
71) Bromoform	12.626	173	3535	1.156	ug/l #	1
76) 1,2,3-Trichloropropane	12.626	75	202059	50.906	ug/l #	1
81) trans-1,4-Dichloro-2-b...	12.626	75	202059	127.551	ug/l #	18

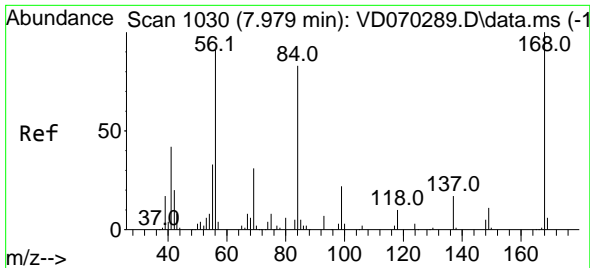
(#) = qualifier out of range (m) = manual integration (+) = signals summed

Data Path : Z:\voasrv\HPCHEM1\MSVOA_D\Data\VD091321\
 Data File : VD070339.D
 Acq On : 13 Sep 2021 21:13
 Operator : VA/SY
 Sample : M3684-15
 Misc : 5.66G/5.00ml/MSVOA_D/SOIL
 ALS Vial : 23 Sample Multiplier: 1

Instrument :
 MSVOA_D
 Client Sampled :
 A008145

Quant Time: Sep 14 00:57:34 2021
 Quant Method : Z:\voasrv\HPCHEM1\MSVOA_D\Method\82D090821S.M
 Quant Title : SW846 8260
 QLast Update : Thu Sep 09 03:07:09 2021
 Response via : Initial Calibration

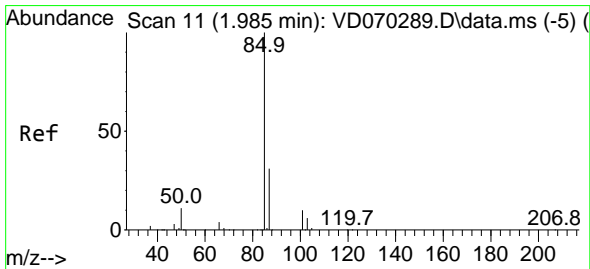
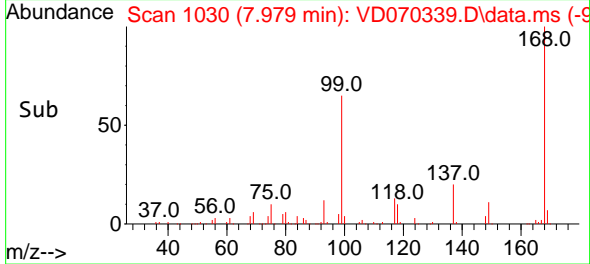
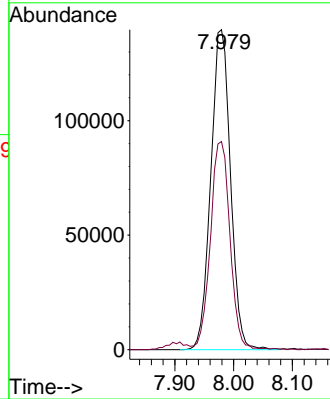
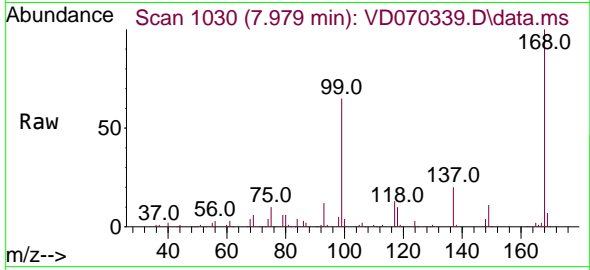




#1
 Pentafluorobenzene
 Concen: 50.000 ug/l
 RT: 7.979 min Scan# 1030
 Delta R.T. 0.000 min
 Lab File: VD070339.D
 Acq: 13 Sep 2021 21:13

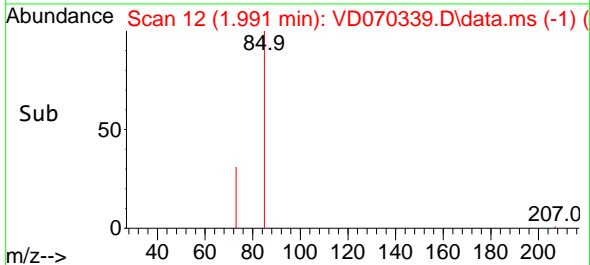
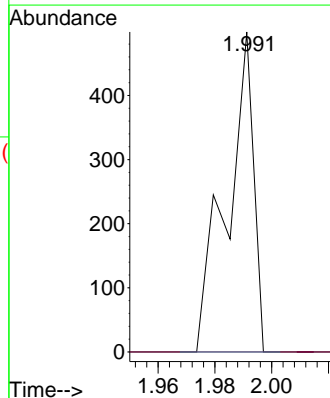
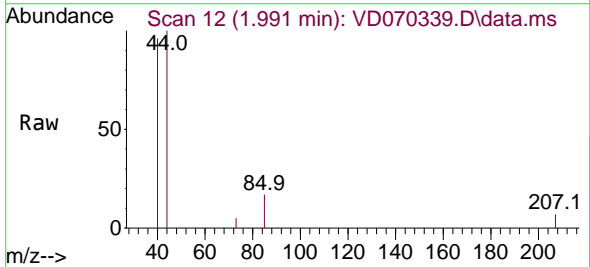
Instrument :
 MSVOA_D
 ClientSampled :
 A008145

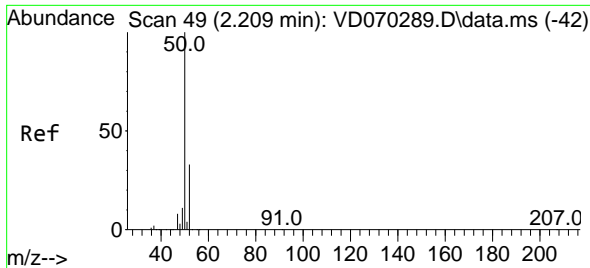
Tgt Ion:168 Resp: 325200
 Ion Ratio Lower Upper
 168 100
 99 64.9 50.8 76.2



#2
 Dichlorodifluoromethane
 Concen: Below Cal
 RT: 1.991 min Scan# 12
 Delta R.T. 0.006 min
 Lab File: VD070339.D
 Acq: 13 Sep 2021 21:13

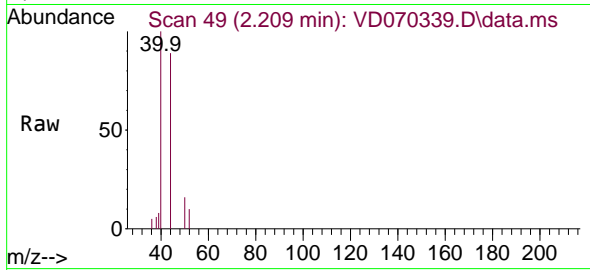
Tgt Ion: 85 Resp: 325
 Ion Ratio Lower Upper
 85 100
 87 0.0 15.6 46.8#



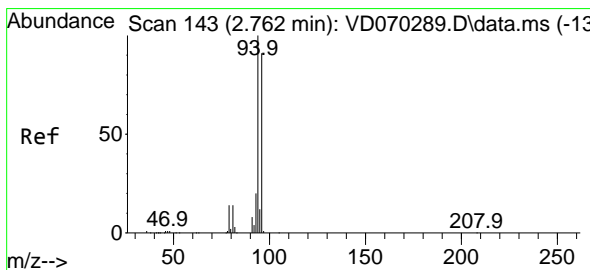
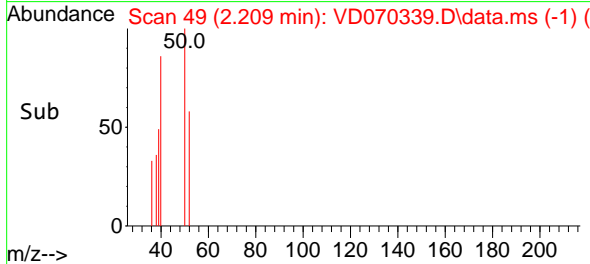
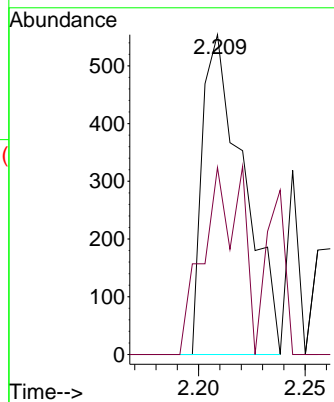


#3
 Chloromethane
 Concen: Below Cal
 RT: 2.209 min Scan# 49
 Delta R.T. -0.000 min
 Lab File: VD070339.D
 Acq: 13 Sep 2021 21:13

Instrument :
 MSVOA_D
 ClientSampled :
 A008145

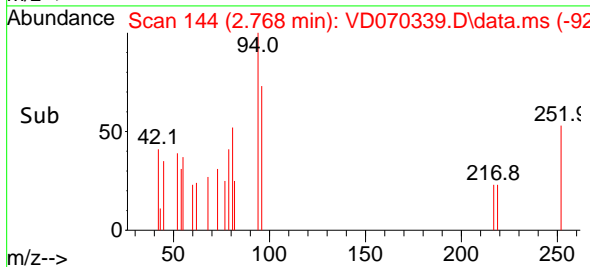
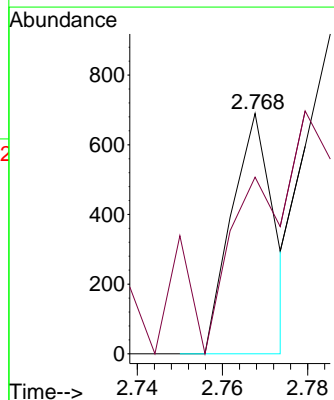
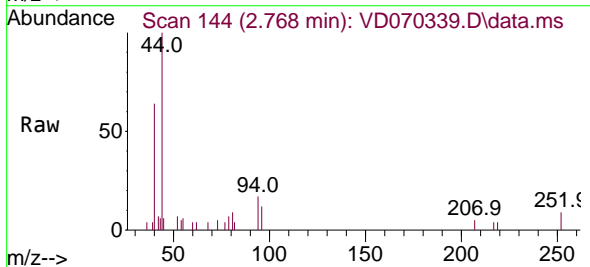


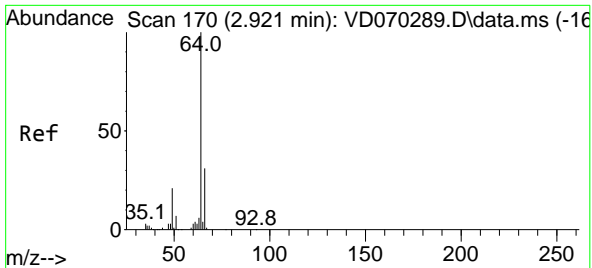
Tgt Ion: 50 Resp: 744
 Ion Ratio Lower Upper
 50 100
 52 58.5 26.2 39.2#



#5
 Bromomethane
 Concen: Below Cal
 RT: 2.768 min Scan# 144
 Delta R.T. 0.006 min
 Lab File: VD070339.D
 Acq: 13 Sep 2021 21:13

Tgt Ion: 94 Resp: 486
 Ion Ratio Lower Upper
 94 100
 96 24.3 73.0 109.6#

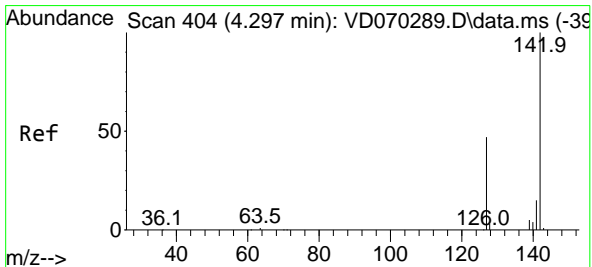
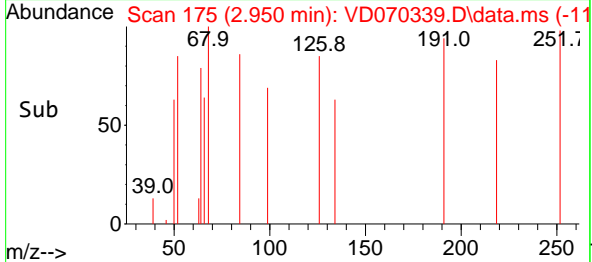
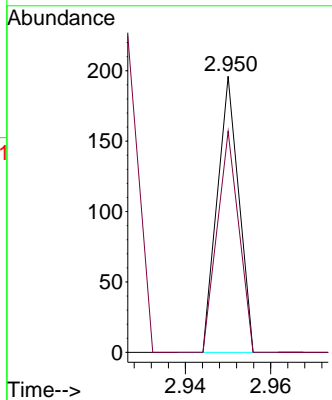
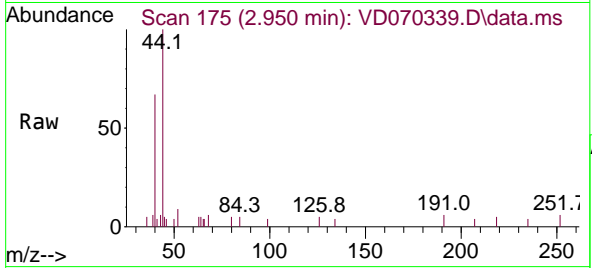




#6
 Chloroethane
 Concen: Below Cal
 RT: 2.950 min Scan# 175
 Delta R.T. 0.029 min
 Lab File: VD070339.D
 Acq: 13 Sep 2021 21:13

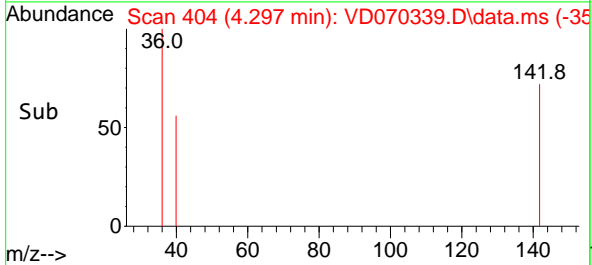
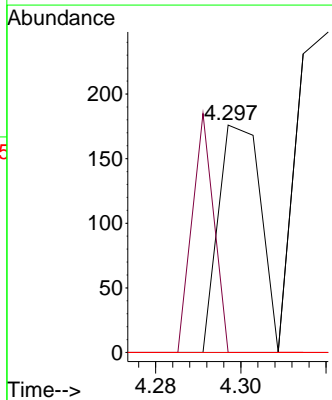
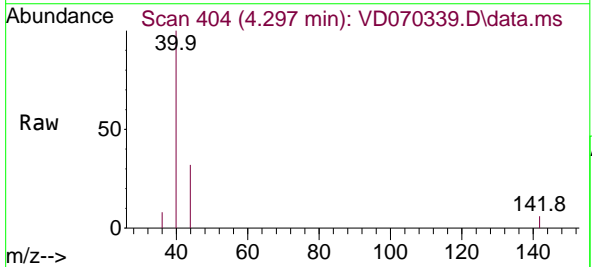
Instrument :
 MSVOA_D
 ClientSampled :
 A008145

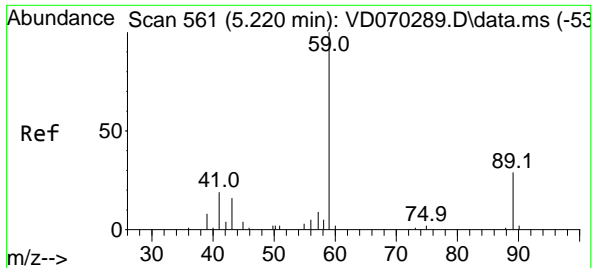
Tgt Ion: 64 Resp: 69
 Ion Ratio Lower Upper
 64 100
 66 80.1 25.0 37.4#



#10
 Methyl Iodide
 Concen: 1.058 ug/l
 RT: 4.297 min Scan# 404
 Delta R.T. -0.000 min
 Lab File: VD070339.D
 Acq: 13 Sep 2021 21:13

Tgt Ion:142 Resp: 121
 Ion Ratio Lower Upper
 142 100
 127 53.7 36.9 55.3
 141 0.0 11.8 17.6#

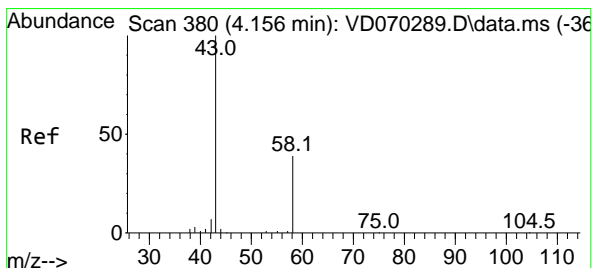
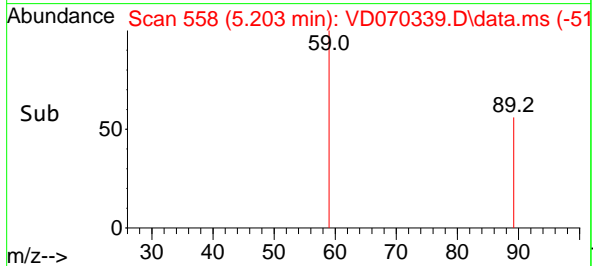
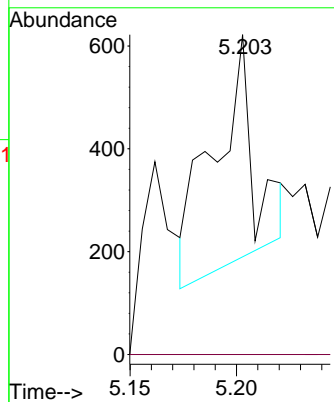
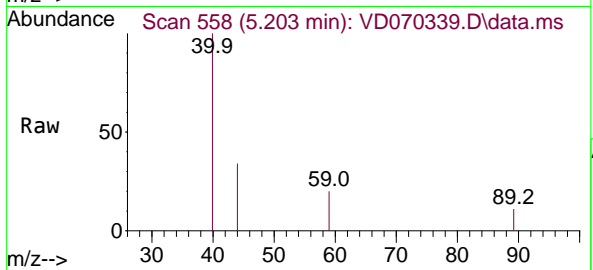




#11
 Tert butyl alcohol
 Concen: 1.226 ug/l
 RT: 5.203 min Scan# 558
 Delta R.T. -0.017 min
 Lab File: VD070339.D
 Acq: 13 Sep 2021 21:13

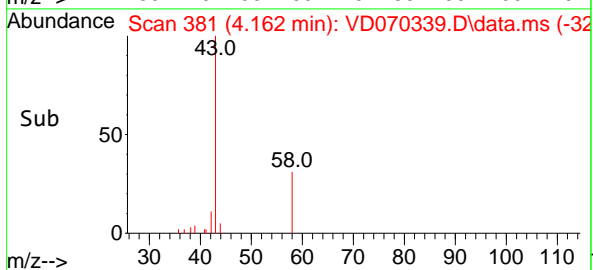
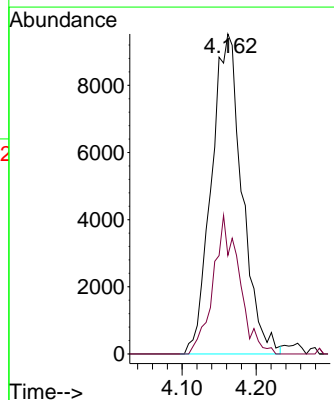
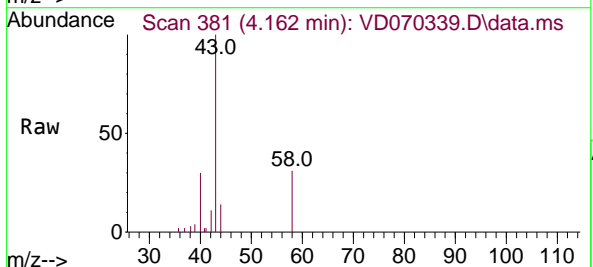
Instrument :
 MSVOA_D
 ClientSampled :
 A008145

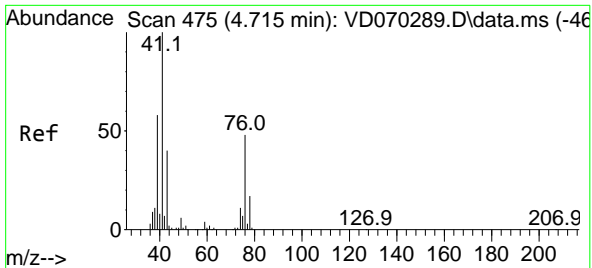
Tgt Ion: 59 Resp: 579
 Ion Ratio Lower Upper
 59 100
 57 0.0 0.0 0.0



#16
 Acetone
 Concen: 36.828 ug/l
 RT: 4.162 min Scan# 381
 Delta R.T. 0.006 min
 Lab File: VD070339.D
 Acq: 13 Sep 2021 21:13

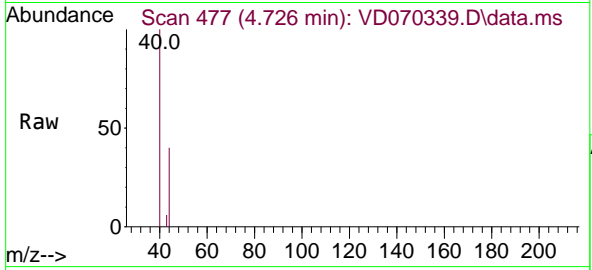
Tgt Ion: 43 Resp: 27455
 Ion Ratio Lower Upper
 43 100
 58 30.8 30.9 46.3#



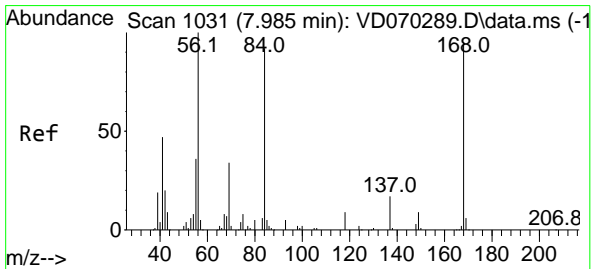
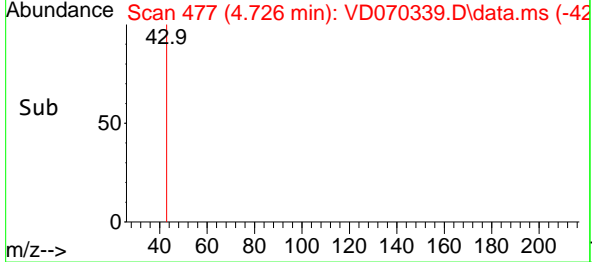
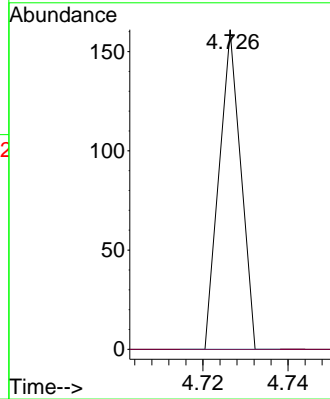


#18
 Methyl Acetate
 Concen: Below Cal
 RT: 4.726 min Scan# 477
 Delta R.T. 0.011 min
 Lab File: VD070339.D
 Acq: 13 Sep 2021 21:13

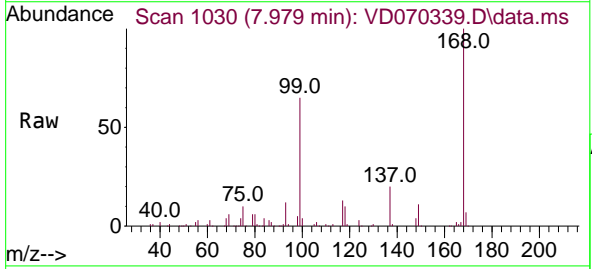
Instrument :
 MSVOA_D
 ClientSampled :
 A008145



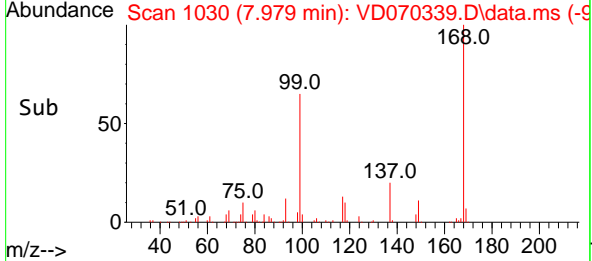
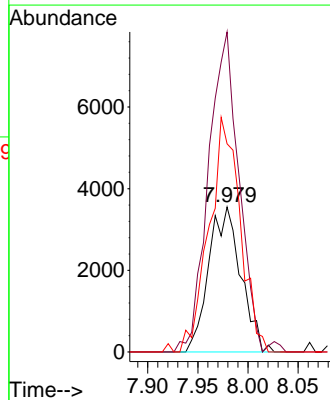
Tgt Ion: 43 Resp: 57
 Ion Ratio Lower Upper
 43 100
 74 0.0 21.6 32.4#

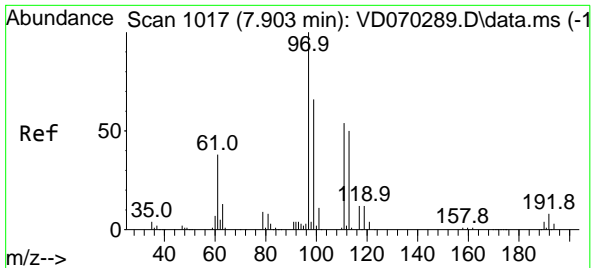


#31
 Cyclohexane
 Concen: 1.100 ug/l
 RT: 7.979 min Scan# 1030
 Delta R.T. -0.006 min
 Lab File: VD070339.D
 Acq: 13 Sep 2021 21:13



Tgt Ion: 56 Resp: 7914
 Ion Ratio Lower Upper
 56 100
 69 216.0 26.9 40.3#
 84 143.6 73.6 110.4#

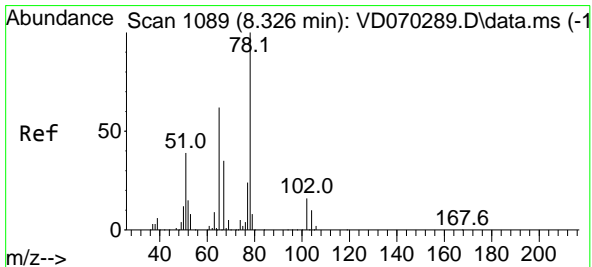
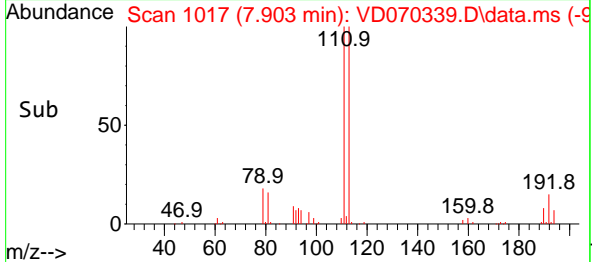
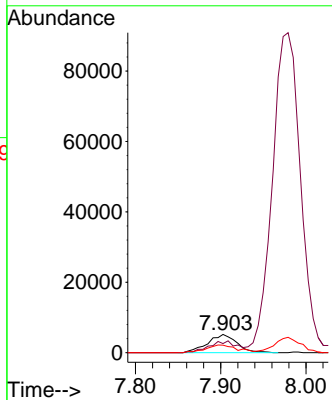
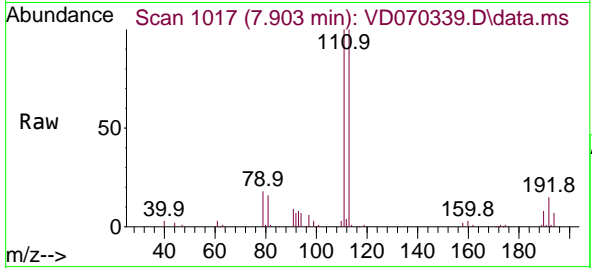




#32
 1,1,1-Trichloroethane
 Concen: 1.695 ug/l
 RT: 7.903 min Scan# 1017
 Delta R.T. 0.000 min
 Lab File: VD070339.D
 Acq: 13 Sep 2021 21:13

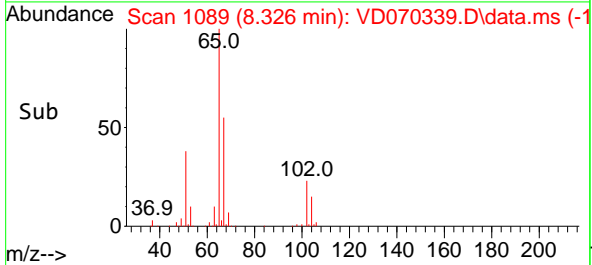
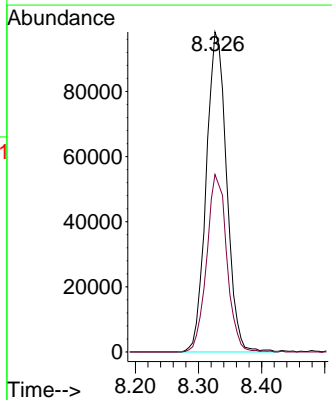
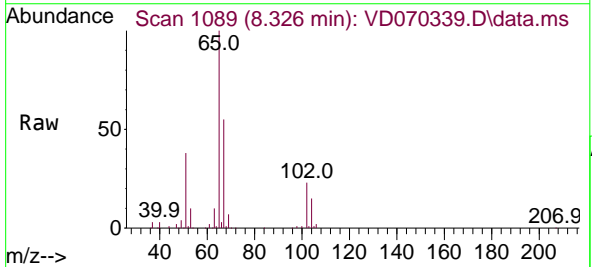
Instrument :
 MSVOA_D
 ClientSampled :
 A008145

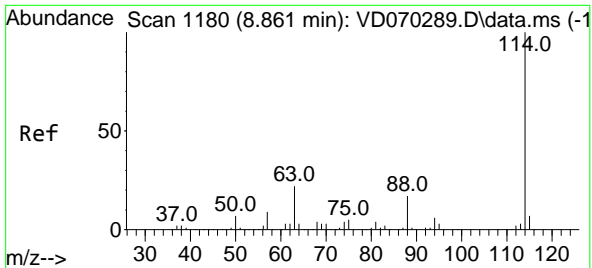
Tgt Ion	Resp	Lower	Upper
97	12322		
97	100		
99	60.2	51.1	76.7
61	44.3	31.4	47.0



#33
 1,2-Dichloroethane-d4
 Concen: 52.646 ug/l
 RT: 8.326 min Scan# 1089
 Delta R.T. 0.000 min
 Lab File: VD070339.D
 Acq: 13 Sep 2021 21:13

Tgt Ion	Resp	Lower	Upper
65	219829		
65	100		
67	54.9	0.0	111.4

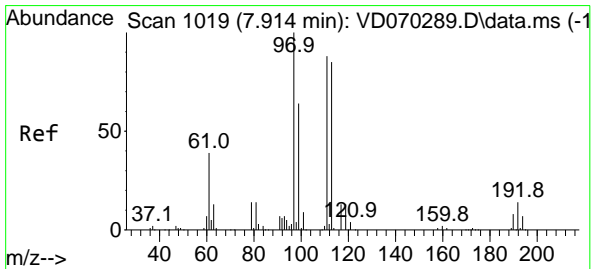
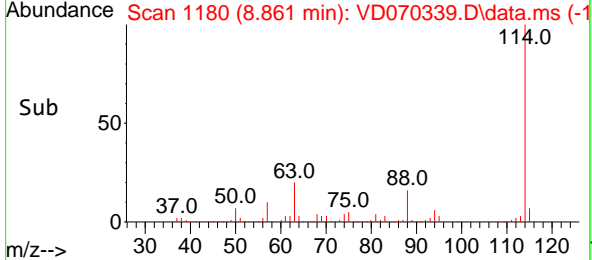
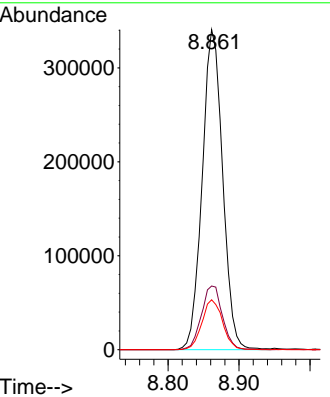
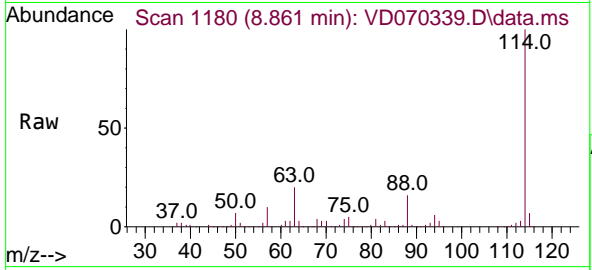




#34
 1,4-Difluorobenzene
 Concen: 50.000 ug/l
 RT: 8.861 min Scan# 1180
 Delta R.T. 0.000 min
 Lab File: VD070339.D
 Acq: 13 Sep 2021 21:13

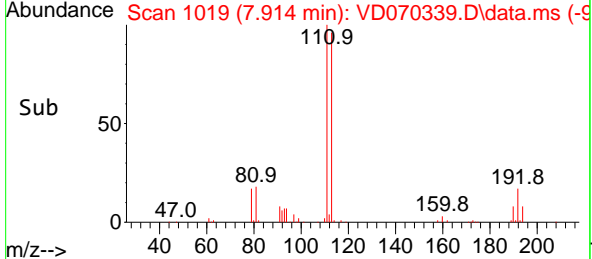
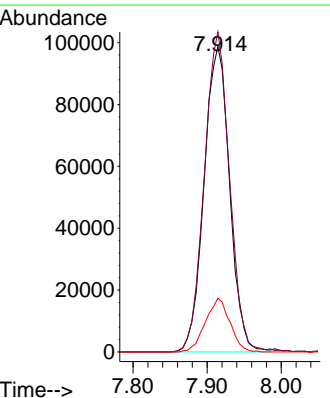
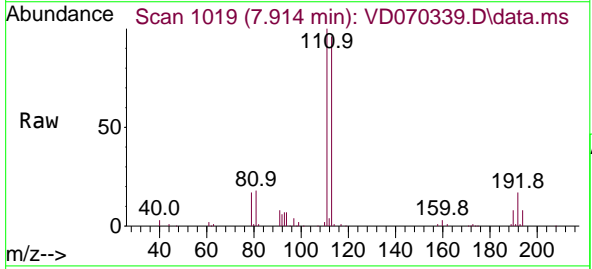
Instrument :
 MSVOA_D
 ClientSampled :
 A008145

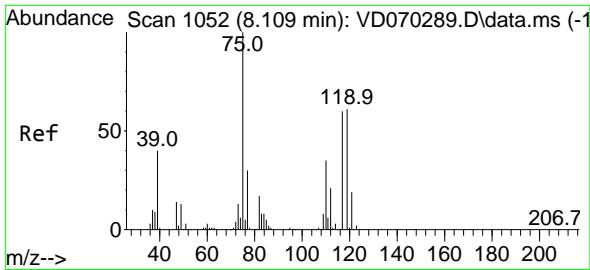
Tgt Ion	Resp	Lower	Upper
114	100		
63	19.9	0.0	43.4
88	15.6	0.0	33.4



#35
 Dibromofluoromethane
 Concen: 48.823 ug/l
 RT: 7.914 min Scan# 1019
 Delta R.T. 0.000 min
 Lab File: VD070339.D
 Acq: 13 Sep 2021 21:13

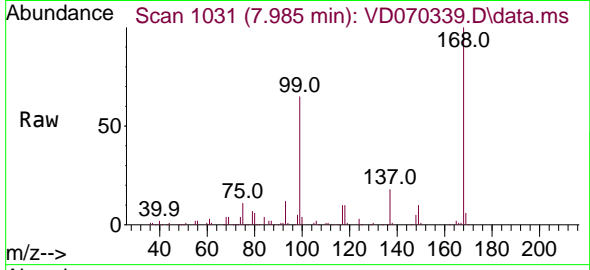
Tgt Ion	Resp	Lower	Upper
113	100		
111	104.1	81.4	122.2
192	16.8	13.0	19.6



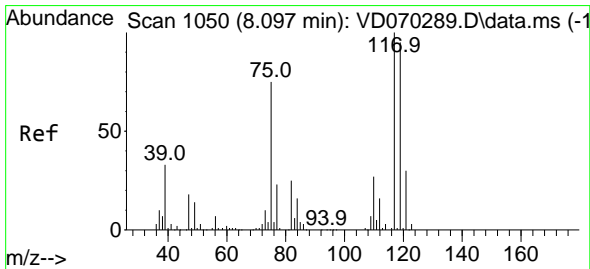
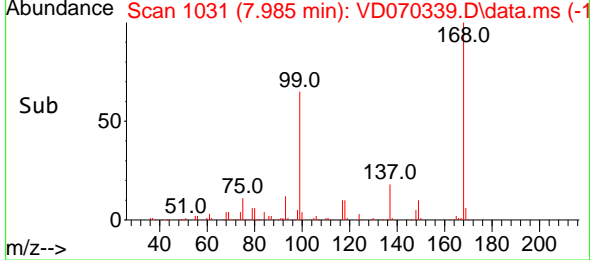
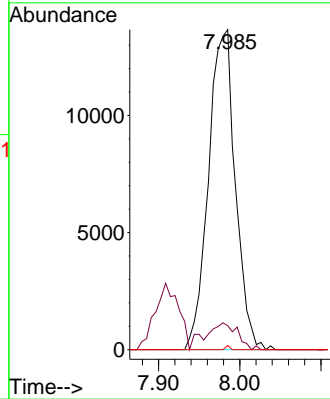


#36
 1,1-Dichloropropene
 Concen: 4.324 ug/l
 RT: 7.985 min Scan# 1031
 Delta R.T. -0.124 min
 Lab File: VD070339.D
 Acq: 13 Sep 2021 21:13

Instrument :
 MSVOA_D
 ClientSampled :
 A008145

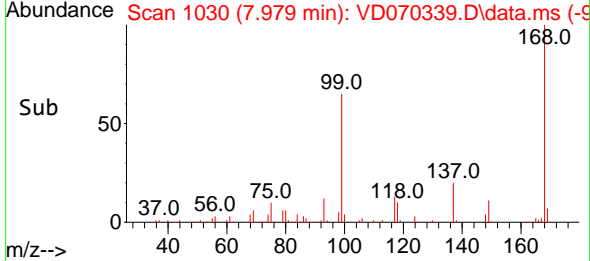
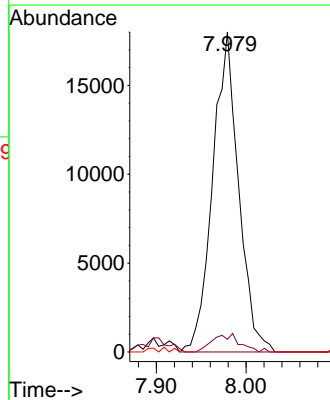
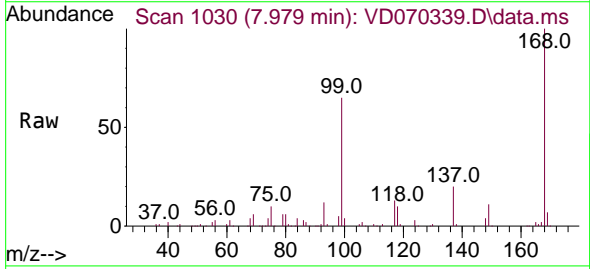


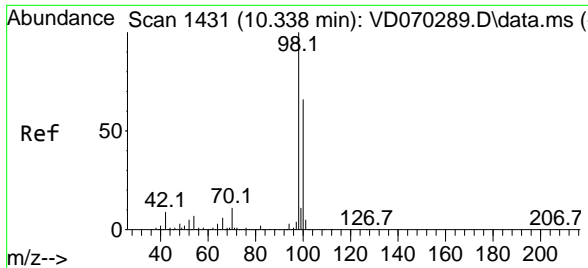
Tgt Ion: 75 Resp: 31433
 Ion Ratio Lower Upper
 75 100
 110 8.1 17.9 53.7#
 77 0.2 25.3 37.9#



#38
 Carbon Tetrachloride
 Concen: 5.024 ug/l
 RT: 7.979 min Scan# 1030
 Delta R.T. -0.118 min
 Lab File: VD070339.D
 Acq: 13 Sep 2021 21:13

Tgt Ion: 117 Resp: 36121
 Ion Ratio Lower Upper
 117 100
 119 4.0 76.1 114.1#
 121 0.0 23.8 35.6#

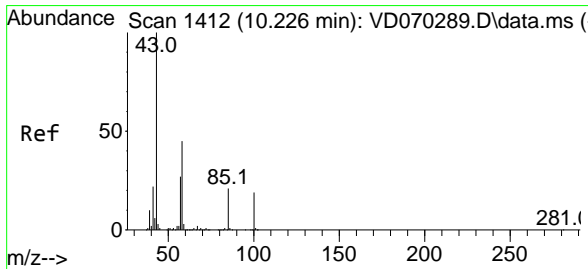
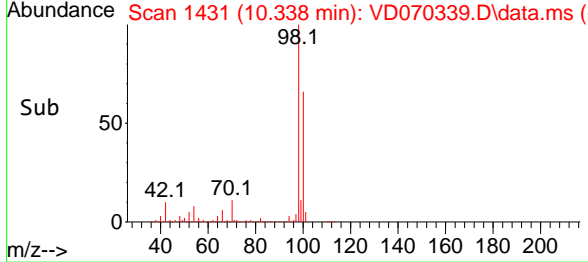
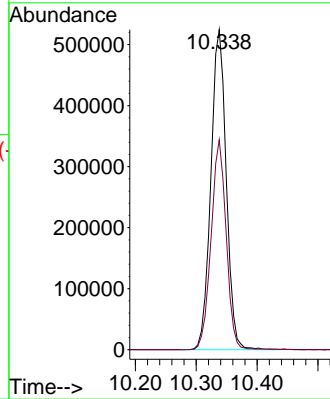
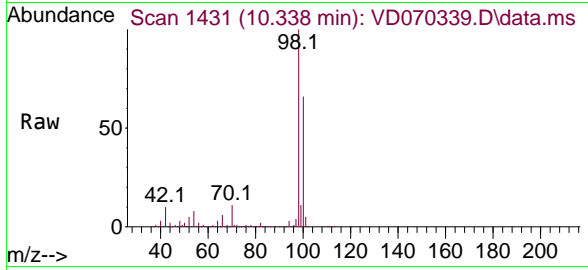




#50
 Toluene-d8
 Concen: 52.338 ug/l
 RT: 10.338 min Scan# 1431
 Delta R.T. 0.000 min
 Lab File: VD070339.D
 Acq: 13 Sep 2021 21:13

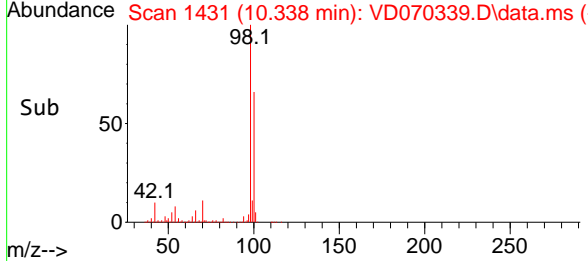
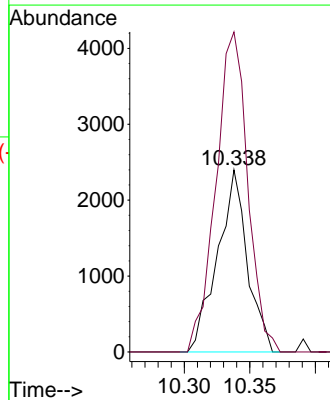
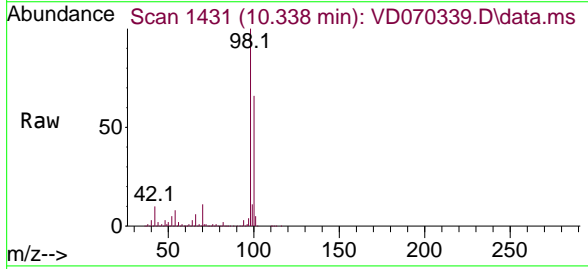
Instrument :
 MSVOA_D
 ClientSampled :
 A008145

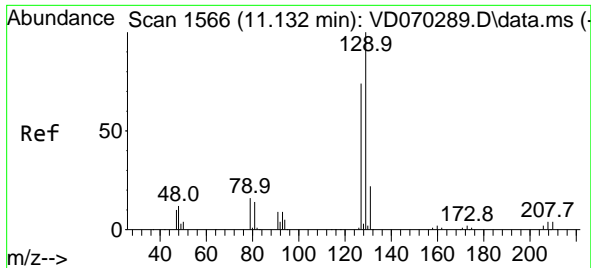
Tgt Ion: 98 Resp: 919942
 Ion Ratio Lower Upper
 98 100
 100 64.4 52.0 78.0



#51
 4-Methyl-2-Pentanone
 Concen: 1.460 ug/l
 RT: 10.338 min Scan# 1431
 Delta R.T. 0.112 min
 Lab File: VD070339.D
 Acq: 13 Sep 2021 21:13

Tgt Ion: 43 Resp: 3796
 Ion Ratio Lower Upper
 43 100
 58 187.1 35.4 53.2#

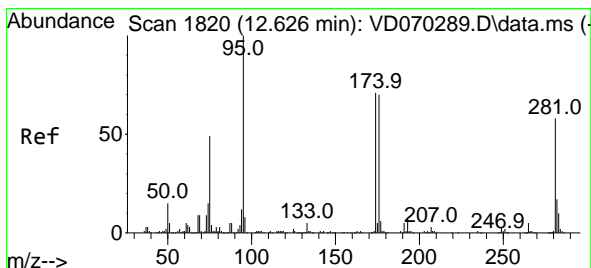
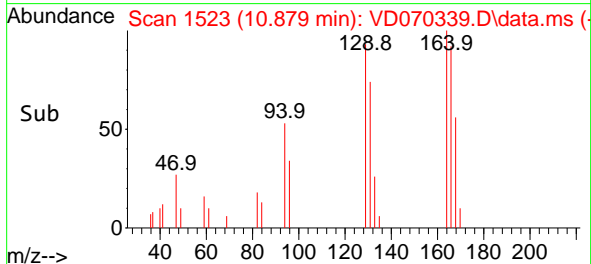
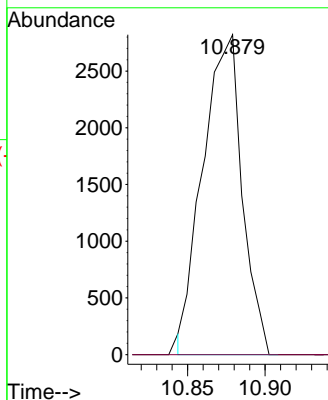
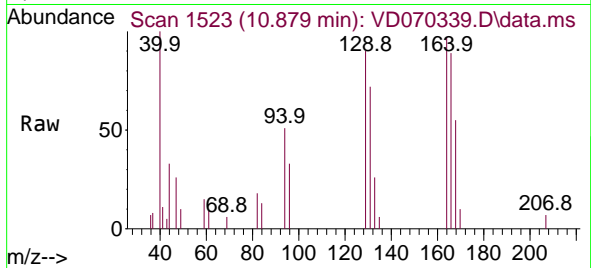




#60
 Dibromochloromethane
 Concen: 1.080 ug/l
 RT: 10.879 min Scan# 1523
 Delta R.T. -0.253 min
 Lab File: VD070339.D
 Acq: 13 Sep 2021 21:13

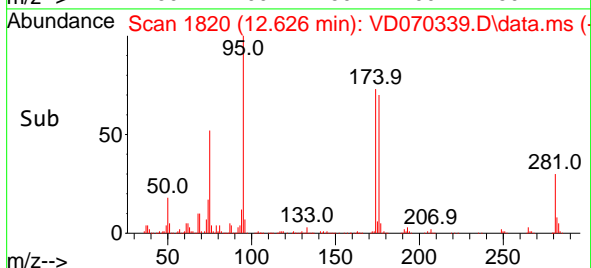
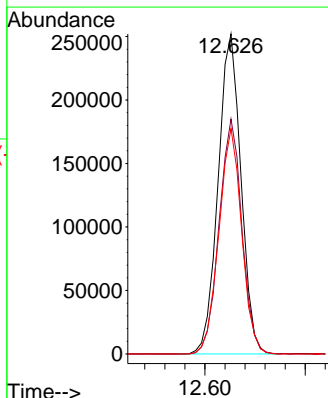
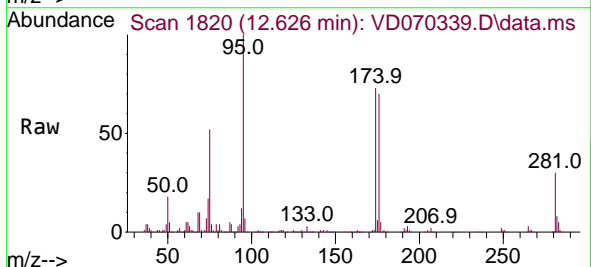
Instrument :
 MSVOA_D
 ClientSampled :
 A008145

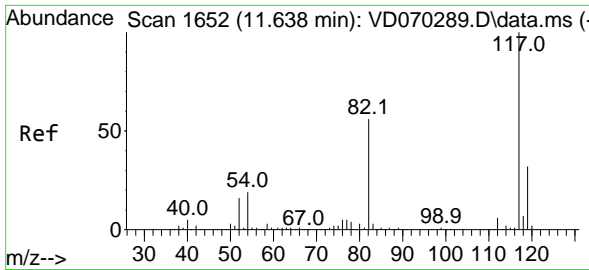
Tgt Ion: 129 Resp: 4975
 Ion Ratio Lower Upper
 129 100
 127 0.0 38.0 114.0#



#62
 4-Bromofluorobenzene
 Concen: 64.794 ug/l
 RT: 12.626 min Scan# 1820
 Delta R.T. 0.000 min
 Lab File: VD070339.D
 Acq: 13 Sep 2021 21:13

Tgt Ion: 95 Resp: 398027
 Ion Ratio Lower Upper
 95 100
 174 73.2 0.0 140.6
 176 70.1 0.0 137.4

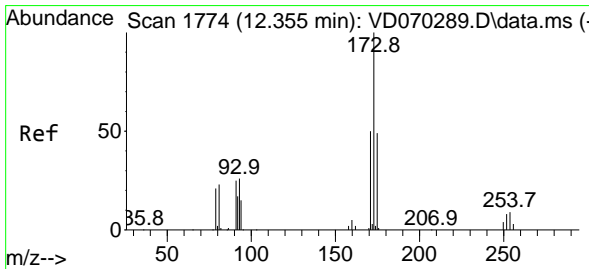
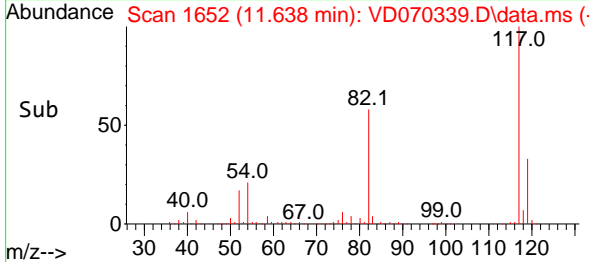
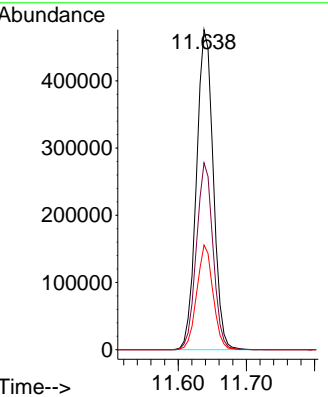
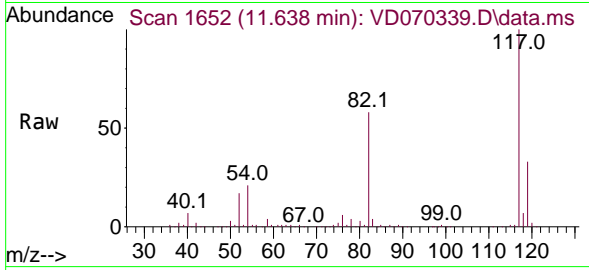




#63
 Chlorobenzene-d5
 Concen: 50.000 ug/l
 RT: 11.638 min Scan# 1652
 Delta R.T. 0.000 min
 Lab File: VD070339.D
 Acq: 13 Sep 2021 21:13

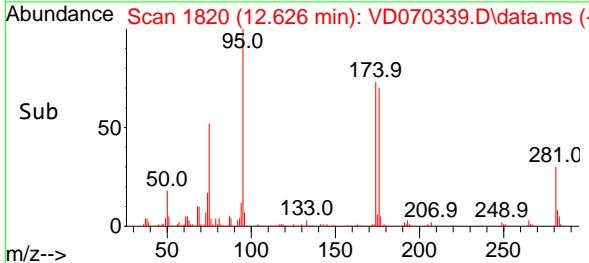
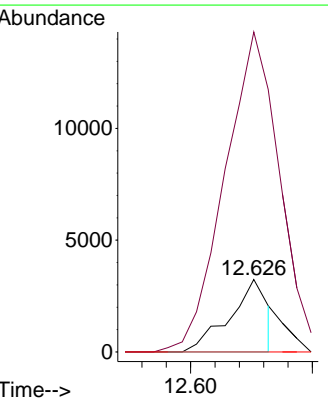
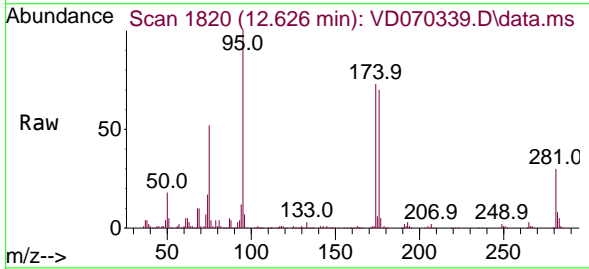
Instrument :
 MSVOA_D
ClientSampled :
 A008145

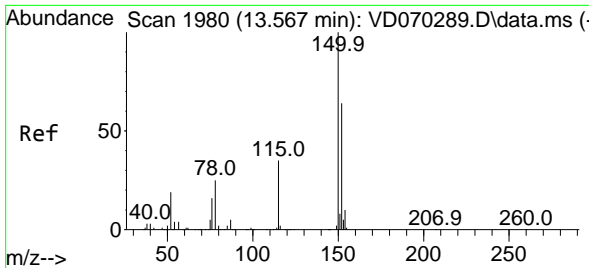
Tgt Ion	Resp	Lower	Upper
117	815712		
82	58.4	45.0	67.4
119	32.7	25.2	37.8



#71
 Bromoform
 Concen: 1.156 ug/l
 RT: 12.626 min Scan# 1820
 Delta R.T. 0.271 min
 Lab File: VD070339.D
 Acq: 13 Sep 2021 21:13

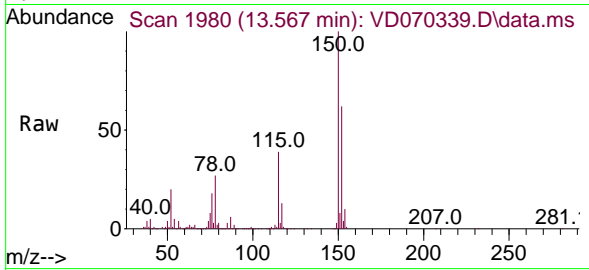
Tgt Ion	Resp	Lower	Upper
173	3535		
175	521.7	25.1	75.2#
254	0.0	0.1	0.1#



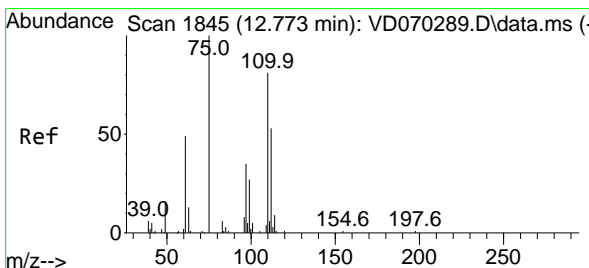
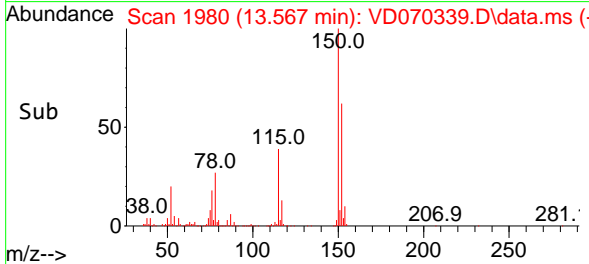
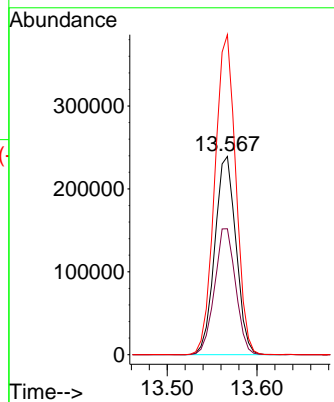


#72
 1,4-Dichlorobenzene-d4
 Concen: 50.000 ug/l
 RT: 13.567 min Scan# 1980
 Delta R.T. 0.000 min
 Lab File: VD070339.D
 Acq: 13 Sep 2021 21:13

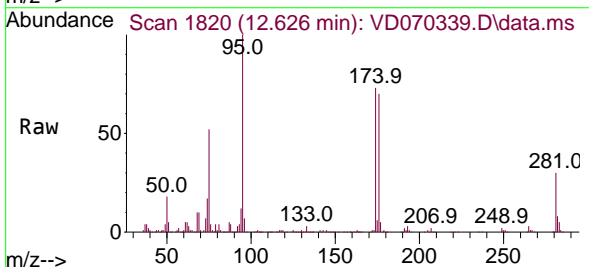
Instrument :
 MSVOA_D
 ClientSampled :
 A008145



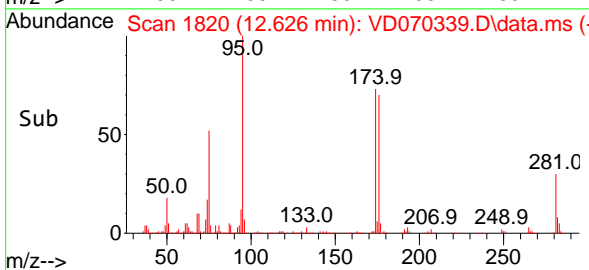
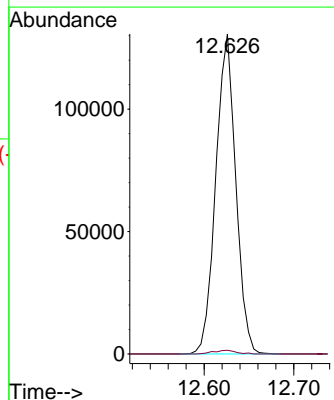
Tgt Ion:152 Resp: 392405
 Ion Ratio Lower Upper
 152 100
 115 63.2 32.1 96.3
 150 160.0 0.0 350.6

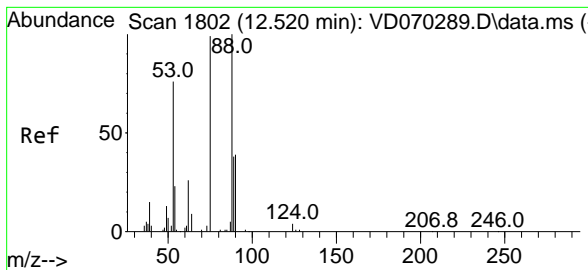


#76
 1,2,3-Trichloropropane
 Concen: 50.906 ug/l
 RT: 12.626 min Scan# 1820
 Delta R.T. -0.147 min
 Lab File: VD070339.D
 Acq: 13 Sep 2021 21:13



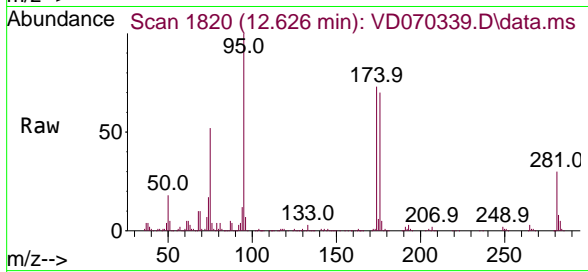
Tgt Ion: 75 Resp: 202059
 Ion Ratio Lower Upper
 75 100
 77 1.3 174.9 524.7#





#81
 trans-1,4-Dichloro-2-butene
 Concen: 127.551 ug/l
 RT: 12.626 min Scan# 1820
 Delta R.T. 0.106 min
 Lab File: VD070339.D
 Acq: 13 Sep 2021 21:13

Instrument :
 MSVOA_D
 ClientSampled :
 A008145



Tgt Ion: 75 Resp: 202059
 Ion Ratio Lower Upper
 75 100
 53 0.2 64.2 96.2#
 89 0.5 35.6 53.4#

