

Data Path : Z:\voasrv\HPCHEM1\MSVOA\_D\Data\VD091323\  
 Data File : VD077106.D  
 Acq On : 13 Sep 2023 15:51  
 Operator : JC/SY  
 Sample : 04417-02  
 Misc : 6.49G/5.0ml/MSVOA\_D/SOIL  
 ALS Vial : 9 Sample Multiplier: 1

Instrument :  
 MSVOA\_D  
 ClientSampleId :

Quant Time: Sep 14 01:25:54 2023  
 Quant Method : Z:\voasrv\HPCHEM1\MSVOA\_D\Method\SFAMDLM090123SMA.M  
 Quant Title : SFAM01.0  
 QLast Update : Sat Sep 02 01:35:39 2023  
 Response via : Initial Calibration

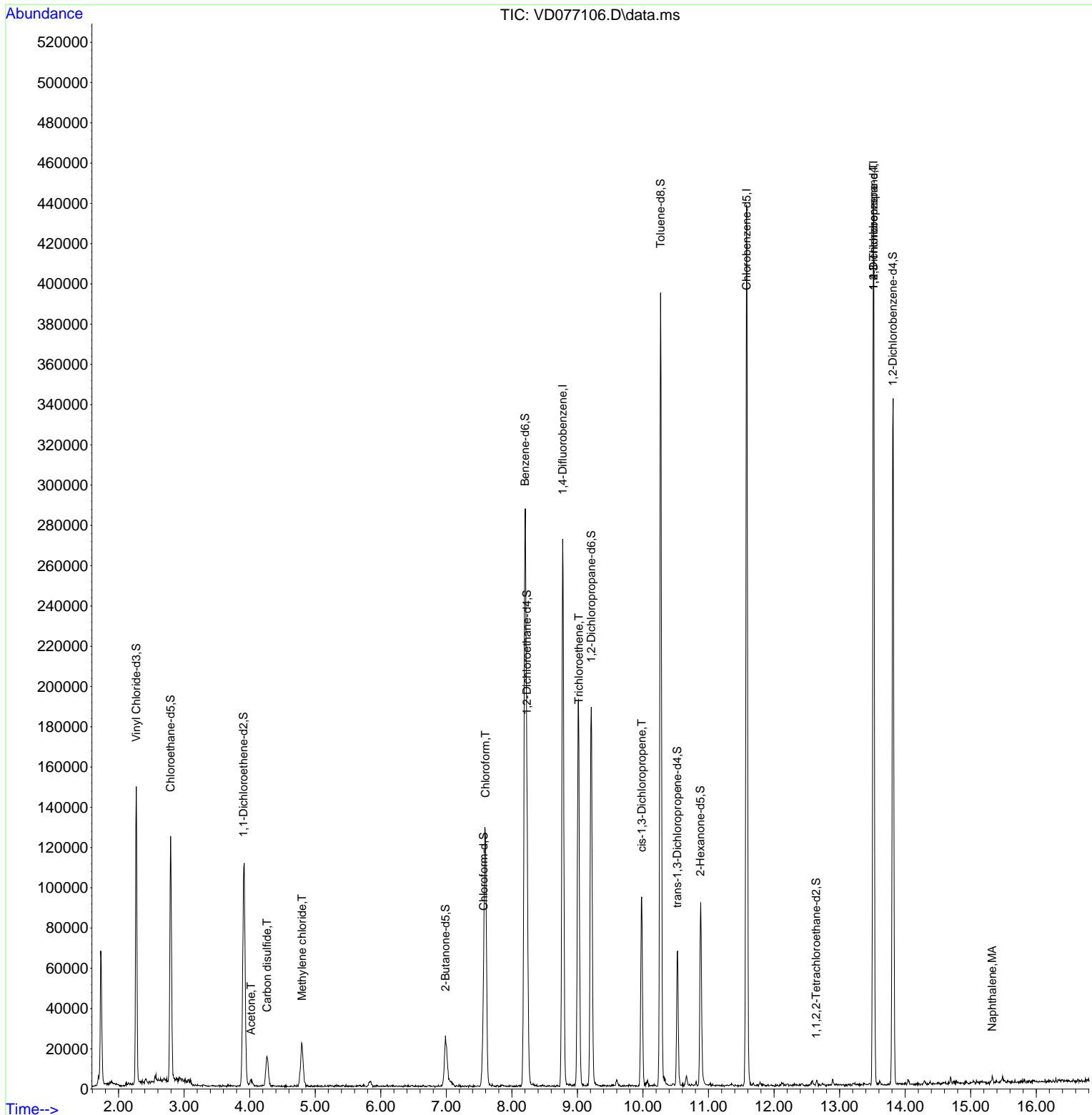
Compound	R.T.	QIon	Response	Conc	Units	Dev(Min)
Internal Standards						
1) 1,4-Difluorobenzene	8.775	114	253410	25.000	ug/L	0.00
28) Chlorobenzene-d5	11.581	117	264377	25.000	ug/L	0.00
58) 1,4-Dichlorobenzene-d4	13.516	152	123833	25.000	ug/L	0.00
System Monitoring Compounds						
4) Vinyl Chloride-d3	2.270	65	134454	21.533	ug/L	0.00
Spiked Amount	25.000	Range 30 - 150	Recovery =	86.120%		
7) Chloroethane-d5	2.793	69	123675	24.085	ug/L	0.00
Spiked Amount	25.000	Range 30 - 150	Recovery =	96.360%		
11) 1,1-Dichloroethene-d2	3.905	65	31041	21.884	ug/L	-0.01
Spiked Amount	25.000	Range 45 - 110	Recovery =	87.520%		
21) 2-Butanone-d5	6.987	46	39606	50.349	ug/L	0.00
Spiked Amount	50.000	Range 20 - 135	Recovery =	100.700%		
24) Chloroform-d	7.569	84	32932	4.749	ug/L	0.00
Spiked Amount	25.000	Range 40 - 150	Recovery =	19.000%#		
26) 1,2-Dichloroethane-d4	8.228	65	86681	26.375	ug/L	0.00
Spiked Amount	25.000	Range 70 - 130	Recovery =	105.480%		
32) Benzene-d6	8.199	84	315825	21.629	ug/L	0.00
Spiked Amount	25.000	Range 20 - 135	Recovery =	86.520%		
36) 1,2-Dichloropropane-d6	9.210	67	98394	23.497	ug/L	0.00
Spiked Amount	25.000	Range 70 - 120	Recovery =	94.000%		
41) Toluene-d8	10.269	98	276625	20.695	ug/L	0.00
Spiked Amount	25.000	Range 30 - 130	Recovery =	82.800%		
43) trans-1,3-Dichloroprop...	10.522	79	38530	20.194	ug/L	0.00
Spiked Amount	25.000	Range 30 - 135	Recovery =	80.760%		
47) 2-Hexanone-d5	10.875	63	26132	39.073	ug/L	0.00
Spiked Amount	50.000	Range 20 - 135	Recovery =	78.140%		
56) 1,1,2,2-Tetrachloroeth...	12.640	84	520	0.139	ug/L	-0.01
Spiked Amount	25.000	Range 45 - 120	Recovery =	0.560%#		
66) 1,2-Dichlorobenzene-d4	13.810	152	98795	24.856	ug/L	0.00
Spiked Amount	25.000	Range 75 - 120	Recovery =	99.440%		
Target Compounds						
13) Acetone	4.022	43	4899	4.341	ug/L	98
14) Carbon disulfide	4.264	76	31468	2.857	ug/L	98
16) Methylene chloride	4.799	84	16175	3.136	ug/L	93
25) Chloroform	7.599	83	126362	18.115	ug/L	93
34) Trichloroethene	9.022	95	8599	2.042	ug/L	87
39) cis-1,3-Dichloropropene	9.981	75	2967	0.466	ug/L	84
61) 1,2,3-Trichloropropane	13.516	75	15121	6.397	ug/L #	64
71) Naphthalene	15.328	128	2945	0.343	ug/L #	87

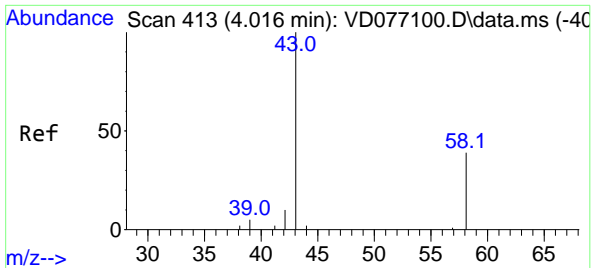
(#) = qualifier out of range (m) = manual integration (+) = signals summed

Data Path : Z:\voasrv\HPCHEM1\MSVOA\_D\Data\VD091323\  
 Data File : VD077106.D  
 Acq On : 13 Sep 2023 15:51  
 Operator : JC/SY  
 Sample : 04417-02  
 Misc : 6.49G/5.0ml/MSVOA\_D/SOIL  
 ALS Vial : 9 Sample Multiplier: 1

Instrument :  
 MSVOA\_D  
 ClientSampleId :

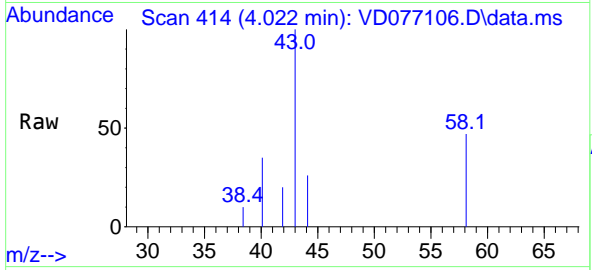
Quant Time: Sep 14 01:25:54 2023  
 Quant Method : Z:\voasrv\HPCHEM1\MSVOA\_D\Method\SFAMDLM090123SMA.M  
 Quant Title : SFAM01.0  
 QLast Update : Sat Sep 02 01:35:39 2023  
 Response via : Initial Calibration



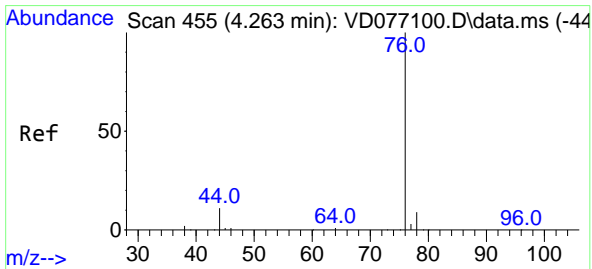
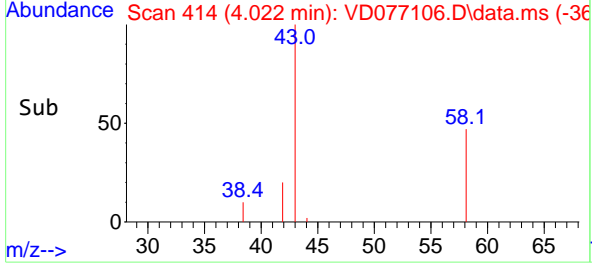
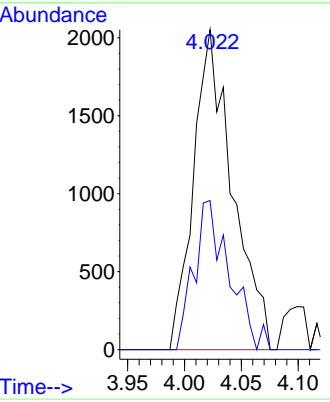


#13  
 Acetone  
 Concen: 4.341 ug/L  
 RT: 4.022 min Scan# 413  
 Delta R.T. 0.006 min  
 Lab File: VD077106.D  
 Acq: 13 Sep 2023 15:51

Instrument : MSVOA\_D  
 ClientSampleId :

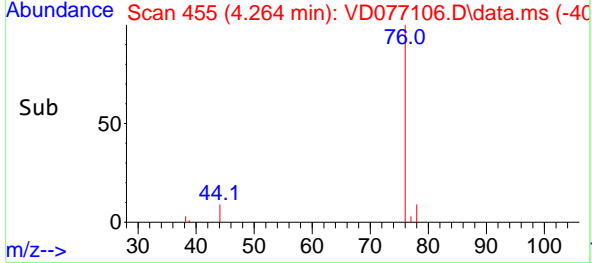
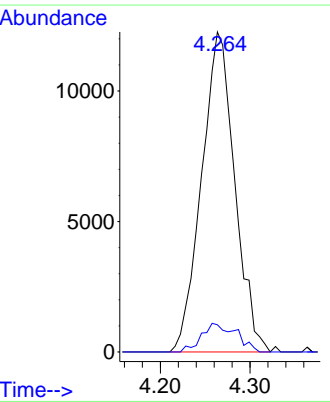
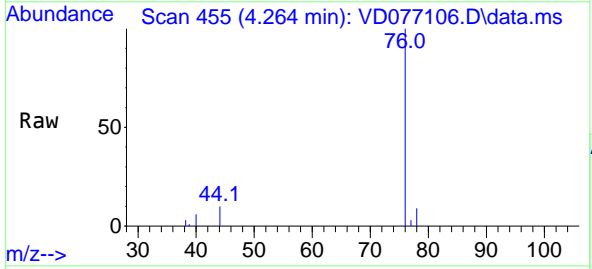


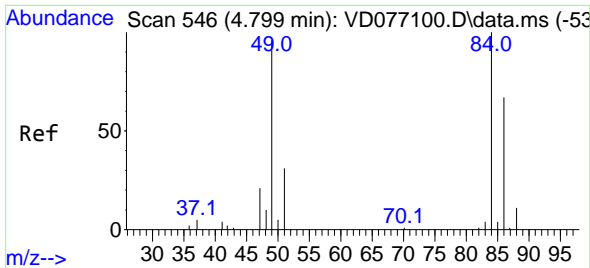
Tgt Ion: 43 Resp: 4899  
 Ion Ratio Lower Upper  
 43 100  
 58 37.0 0.0 71.8



#14  
 Carbon disulfide  
 Concen: 2.857 ug/L  
 RT: 4.264 min Scan# 455  
 Delta R.T. -0.006 min  
 Lab File: VD077106.D  
 Acq: 13 Sep 2023 15:51

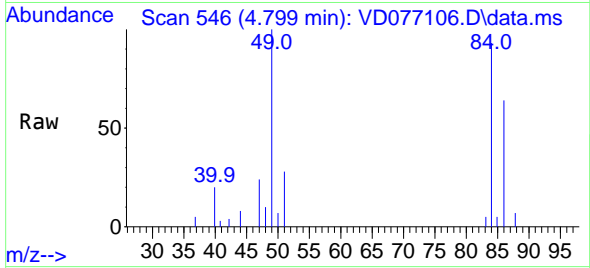
Tgt Ion: 76 Resp: 31468  
 Ion Ratio Lower Upper  
 76 100  
 78 8.5 7.5 11.3





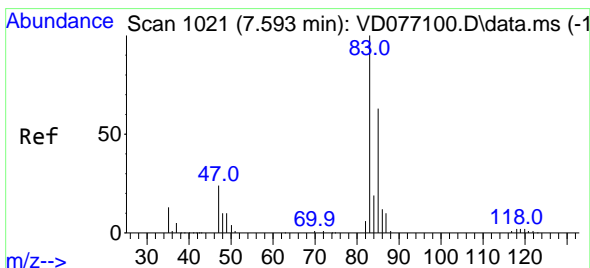
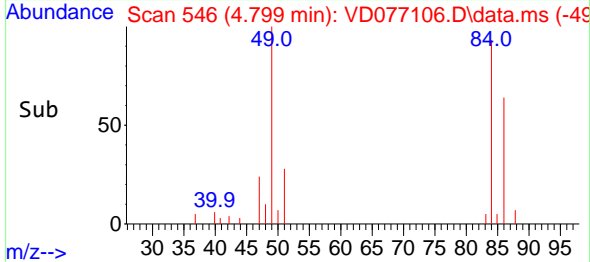
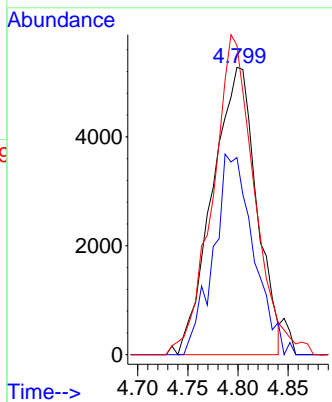
#16  
 Methylene chloride  
 Concen: 3.136 ug/L  
 RT: 4.799 min Scan# 54  
 Delta R.T. -0.006 min  
 Lab File: VD077106.D  
 Acq: 13 Sep 2023 15:51

Instrument :  
 MSVOA\_D  
 ClientSampleId :



Tgt Ion: 84 Resp: 16175

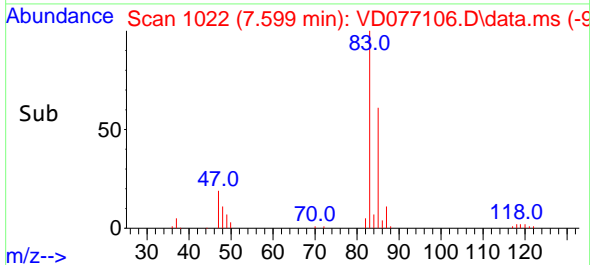
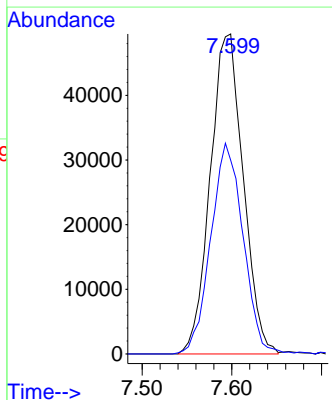
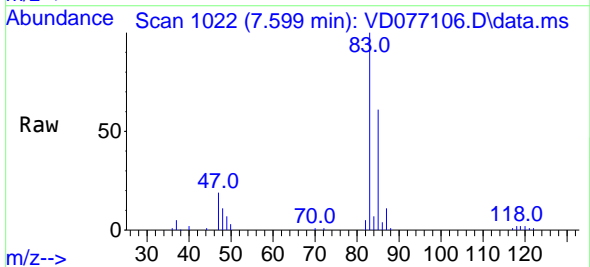
Ion	Ratio	Lower	Upper
84	100		
86	68.6	45.3	84.1
49	107.7	69.2	128.6

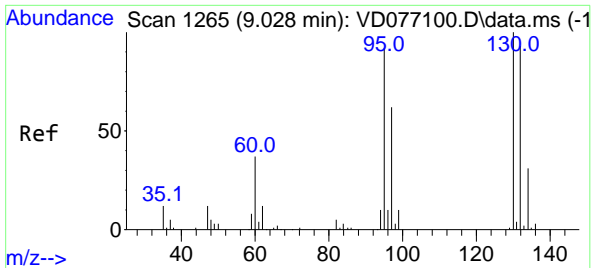


#25  
 Chloroform  
 Concen: 18.115 ug/L  
 RT: 7.599 min Scan# 1022  
 Delta R.T. 0.000 min  
 Lab File: VD077106.D  
 Acq: 13 Sep 2023 15:51

Tgt Ion: 83 Resp: 126362

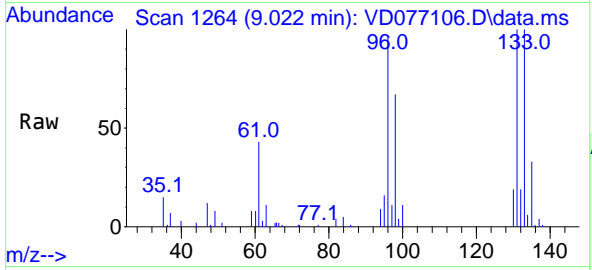
Ion	Ratio	Lower	Upper
83	100		
85	60.5	46.2	85.8





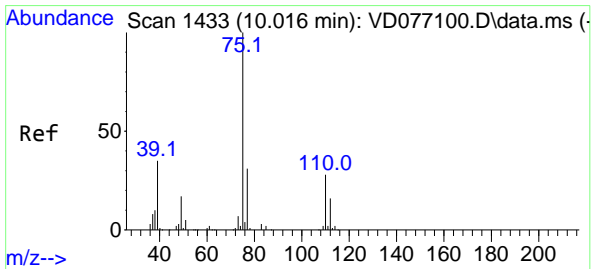
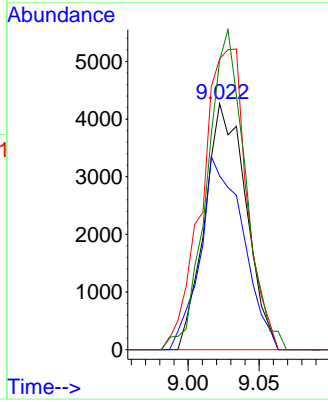
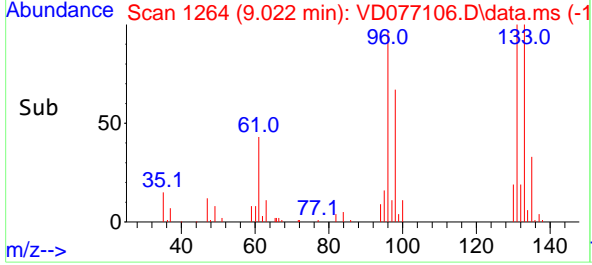
#34  
 Trichloroethene  
 Concen: 2.042 ug/L  
 RT: 9.022 min Scan# 11  
 Delta R.T. -0.006 min  
 Lab File: VD077106.D  
 Acq: 13 Sep 2023 15:51

Instrument :  
 MSVOA\_D  
 ClientSampleId :

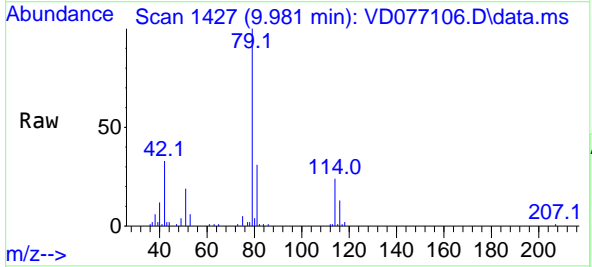


Tgt Ion: 95 Resp: 8599

Ion	Ratio	Lower	Upper
95	100		
97	70.6	46.4	86.2
132	118.2	70.1	130.1
130	117.5	72.4	134.5

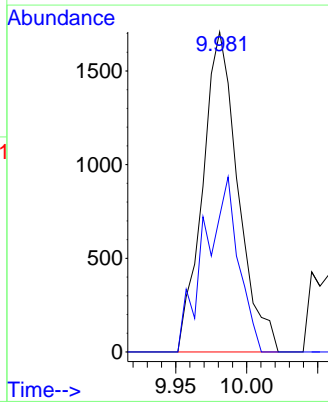
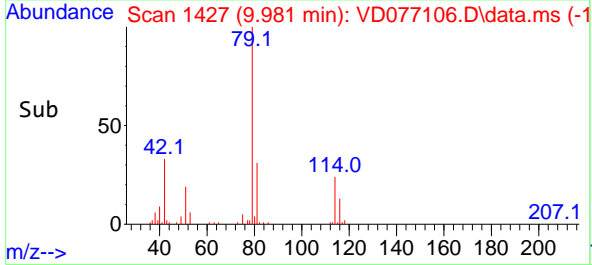


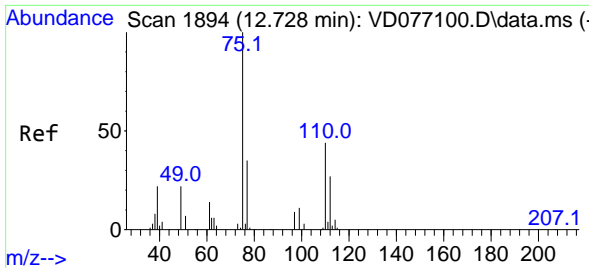
#39  
 cis-1,3-Dichloropropene  
 Concen: 0.466 ug/L  
 RT: 9.981 min Scan# 1427  
 Delta R.T. -0.035 min  
 Lab File: VD077106.D  
 Acq: 13 Sep 2023 15:51



Tgt Ion: 75 Resp: 2967

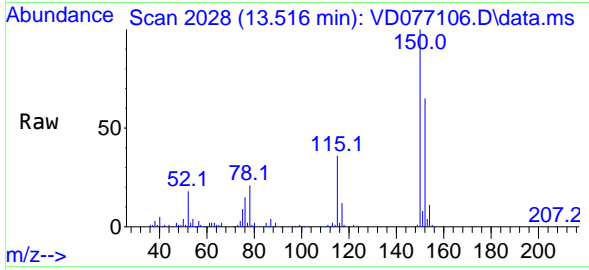
Ion	Ratio	Lower	Upper
75	100		
77	42.4	23.2	43.2



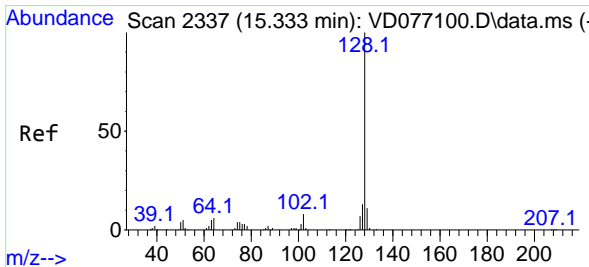
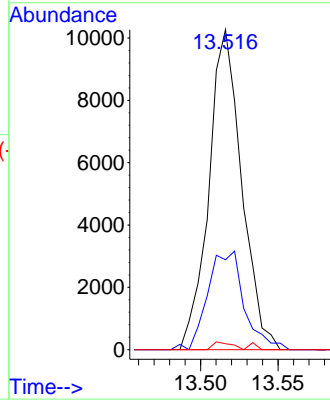
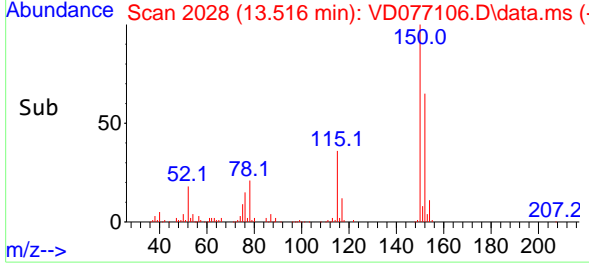


#61  
 1,2,3-Trichloropropane  
 Concen: 6.397 ug/L  
 RT: 13.516 min Scan# 2028  
 Delta R.T. 0.788 min  
 Lab File: VD077106.D  
 Acq: 13 Sep 2023 15:51

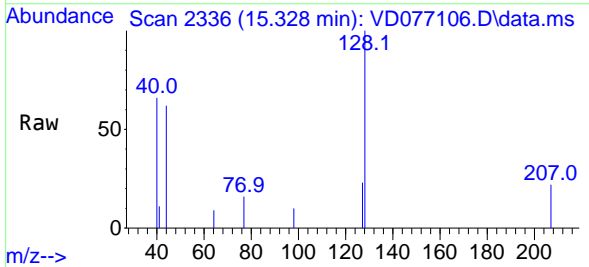
Instrument : MSVOA\_D  
 ClientSampleId :



Tgt Ion: 75 Resp: 15121  
 Ion Ratio Lower Upper  
 75 100  
 77 33.7 26.6 40.0  
 110 1.4 33.6 50.4#



#71  
 Naphthalene  
 Concen: 0.343 ug/L  
 RT: 15.328 min Scan# 2336  
 Delta R.T. -0.006 min  
 Lab File: VD077106.D  
 Acq: 13 Sep 2023 15:51



Tgt Ion:128 Resp: 2945  
 Ion Ratio Lower Upper  
 128 100  
 127 13.4 10.6 16.0  
 129 0.0 8.6 13.0#

