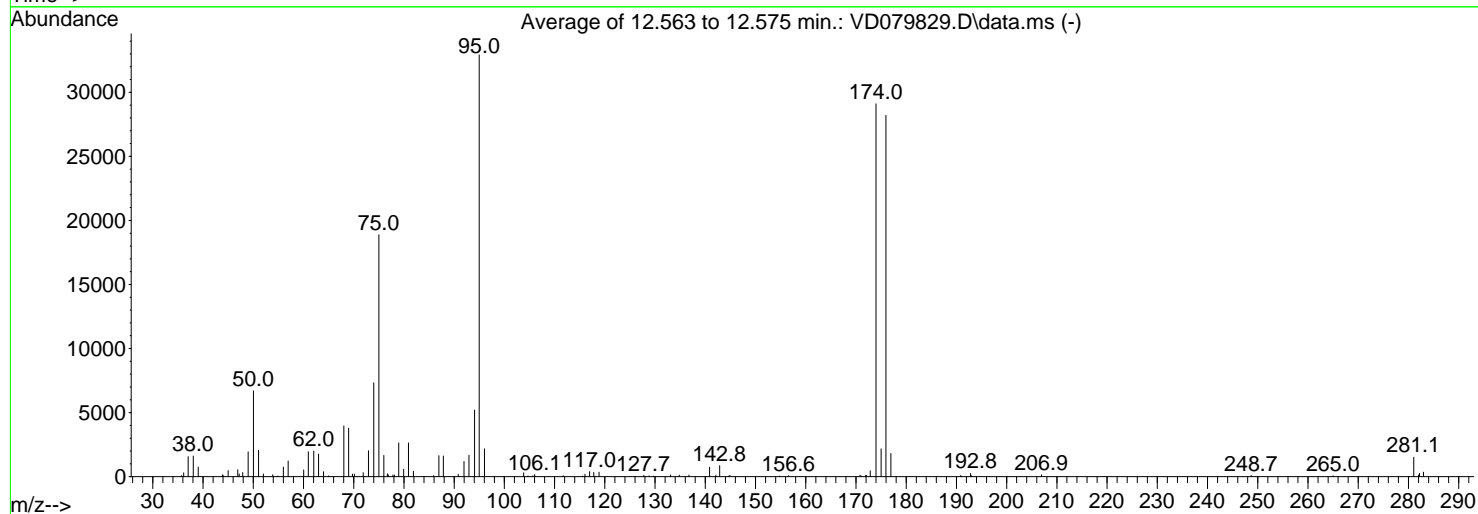
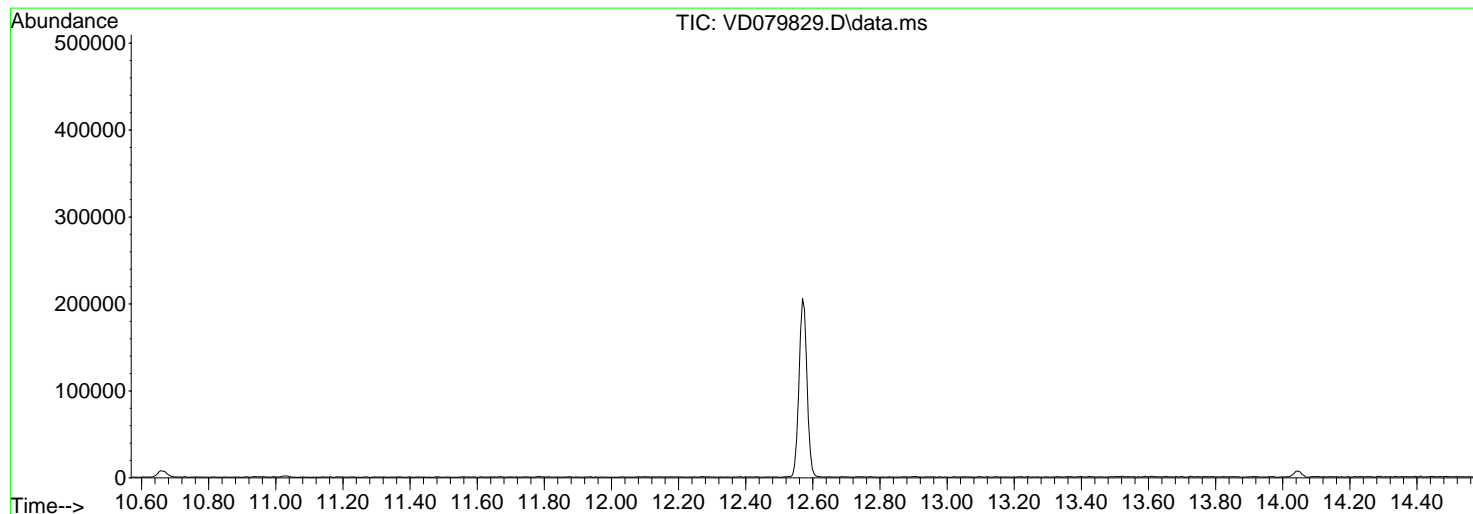


Data Path : Z:\voasrv\HPCHEM1\MSVOA_D\Data\VD091324\
 Data File : VD079829.D
 Acq On : 13 Sep 2024 09:45
 Operator : RP/MD
 Sample : BFB828
 Misc : 5.00G/10ml/MSVOA_D/SOIL
 ALS Vial : 1 Sample Multiplier: 1

Instrument :
 MSVOA_D
 ClientSampleId :
 BFB828

Integration File: LSCINT.P

Method : Z:\voasrv\HPCHEM1\MSVOA_D\Method\SFAMDLM091024SMA.M
 Title : SFAM01.0
 Last Update : Fri Sep 13 23:49:48 2024



AutoFind: Scans 1866, 1867, 1868; Background Corrected with Scan 1860

Target Mass	Rel. to Mass	Lower Limit%	Upper Limit%	Rel. Abn%	Raw Abn	Result Pass/Fail
50	95	15	40	20.3	6694	PASS
75	95	30	80	57.4	18883	PASS
95	95	100	100	100.0	32923	PASS
96	95	5	9	6.6	2172	PASS
173	174	0.00	2	1.6	463	PASS
174	95	50	120	88.4	29099	PASS
175	174	5	9	7.5	2178	PASS
176	174	95	105	96.9	28200	PASS
177	176	5	10	6.4	1812	PASS

Scan 1860 (12.528 min): VD079829.D\data.ms
BFB828

m/z	Abundance
40.00	1041.0
44.00	322.0
50.80	165.0

Instrument :
MSVOA_D
ClientSampleId :
BFB828

m/z	Abundance
36.10	279.0
37.00	1560.0
38.00	1445.0
39.10	577.0
39.90	1030.0
43.90	435.0
45.00	576.0
47.00	533.0
48.00	256.0
49.00	1922.0
50.00	5847.0
51.00	2126.0
51.90	193.0
53.90	213.0
56.00	801.0
57.00	1120.0
60.00	481.0
60.90	1635.0
62.00	2014.0
63.00	1667.0
64.00	351.0
68.10	3247.0
69.00	3350.0
69.80	295.0
71.80	372.0
72.90	1407.0
74.00	6006.0
75.00	17408.0
76.00	1418.0
76.70	289.0
77.80	429.0
78.90	2340.0
80.00	579.0
80.90	2192.0
82.00	391.0
87.00	1819.0
87.80	1482.0
90.80	287.0
91.90	1132.0
93.00	1310.0
94.10	4307.0
95.00	30032.0
96.00	2191.0
103.90	274.0
105.70	175.0
106.10	155.0
111.70	226.0
116.90	304.0
117.80	277.0
118.90	332.0
127.70	239.0
134.90	206.0
140.90	832.0
142.20	174.0
142.90	927.0
144.70	190.0
170.90	189.0
172.90	542.0
174.00	23928.0
175.00	2006.0
176.00	23880.0
176.90	1727.0
192.80	311.0
206.90	208.0
281.20	898.0
282.00	386.0
283.00	420.0

Instrument :
MSVOA_D
ClientSampleId :
BFB828

m/z	Abundance
35.70	233.0
36.20	253.0
37.00	1776.0
38.10	1970.0
39.00	803.0
39.90	573.0
44.10	838.0
45.00	492.0
46.80	550.0
47.20	650.0
47.90	434.0
49.00	1928.0
50.00	8011.0
51.10	2214.0
52.00	170.0
53.90	226.0
54.90	163.0
56.00	694.0
57.00	1069.0
60.10	718.0
61.00	2036.0
62.00	2059.0
63.00	1976.0
64.00	477.0
68.10	4256.0
69.00	4354.0
70.10	300.0
71.90	359.0
73.00	2630.0
74.00	8539.0
75.00	20656.0
76.00	1819.0
76.90	414.0
79.00	2816.0
79.90	583.0
80.90	2812.0
81.80	381.0
86.80	1391.0
87.90	1792.0
90.80	259.0
92.00	1502.0
92.90	1727.0
94.00	5793.0
95.00	35544.0
96.10	2446.0
103.80	246.0
116.00	402.0
117.00	321.0
117.80	527.0
118.80	302.0
127.90	160.0
129.70	158.0
133.10	238.0
136.70	180.0
140.90	679.0
142.80	932.0
144.90	311.0
170.70	150.0
171.90	301.0
172.70	405.0
174.00	32640.0
175.00	2272.0
175.90	30864.0
176.90	1911.0
190.80	229.0
193.00	234.0
281.00	1857.0
282.20	311.0
283.10	246.0

Instrument :
MSVOA_D
ClientSampleId :
BFB828

m/z	Abundance
36.10	368.0
37.10	1358.0
38.10	1423.0
39.00	851.0
40.00	830.0
44.00	457.0
45.00	360.0
46.90	528.0
47.80	283.0
49.00	1977.0
50.10	6225.0
51.10	1851.0
52.10	263.0
56.00	764.0
56.90	1471.0
60.00	395.0
61.00	2162.0
62.10	1932.0
63.00	1643.0
63.90	162.0
64.10	167.0
65.00	190.0
68.00	4390.0
69.00	3662.0
69.70	315.0
70.20	299.0
72.00	208.0
73.00	2034.0
74.00	7448.0
75.00	18584.0
76.00	1740.0
76.70	380.0
78.10	378.0
78.90	2744.0
79.90	558.0
80.90	2892.0
81.90	496.0
85.90	237.0
87.00	1716.0
87.90	1555.0
91.90	945.0
92.90	2005.0
94.00	5482.0
95.00	33192.0
96.10	1880.0
103.90	389.0
104.70	170.0
106.00	318.0
115.60	159.0
116.10	154.0
116.90	547.0
117.70	184.0
118.80	417.0
128.80	192.0
133.10	197.0
134.70	165.0
136.80	187.0
140.80	708.0
142.00	159.0
142.90	732.0
154.80	152.0
156.60	218.0
171.00	188.0
172.10	270.0
172.90	441.0
174.00	30728.0
175.00	2255.0
176.00	29856.0
177.00	1798.0
191.00	166.0
192.80	439.0
207.00	239.0
248.70	279.0
265.00	220.0
281.10	1796.0
282.20	476.0
282.90	370.0

Instrument :
MSVOA_D
ClientSampleId :
BFB828