

Data Path : Z:\voasrv\HPCHEM1\MSVOA_D\Data\VD091421\
 Data File : VD070349.D
 Acq On : 14 Sep 2021 13:14
 Operator : VA/SY
 Sample : M3718-01RE
 Misc : 5.09G/5.00ml/MSVOA_D/SOIL
 ALS Vial : 9 Sample Multiplier: 1

Instrument :
 MSVOA_D
 ClientSampleId :
 OR-03-091021RE

Quant Time: Sep 15 02:45:50 2021
 Quant Method : Z:\voasrv\HPCHEM1\MSVOA_D\Method\82D090821S.M
 Quant Title : SW846 8260
 QLast Update : Thu Sep 09 03:07:09 2021
 Response via : Initial Calibration

Compound	R.T.	QIon	Response	Conc	Units	Dev(Min)

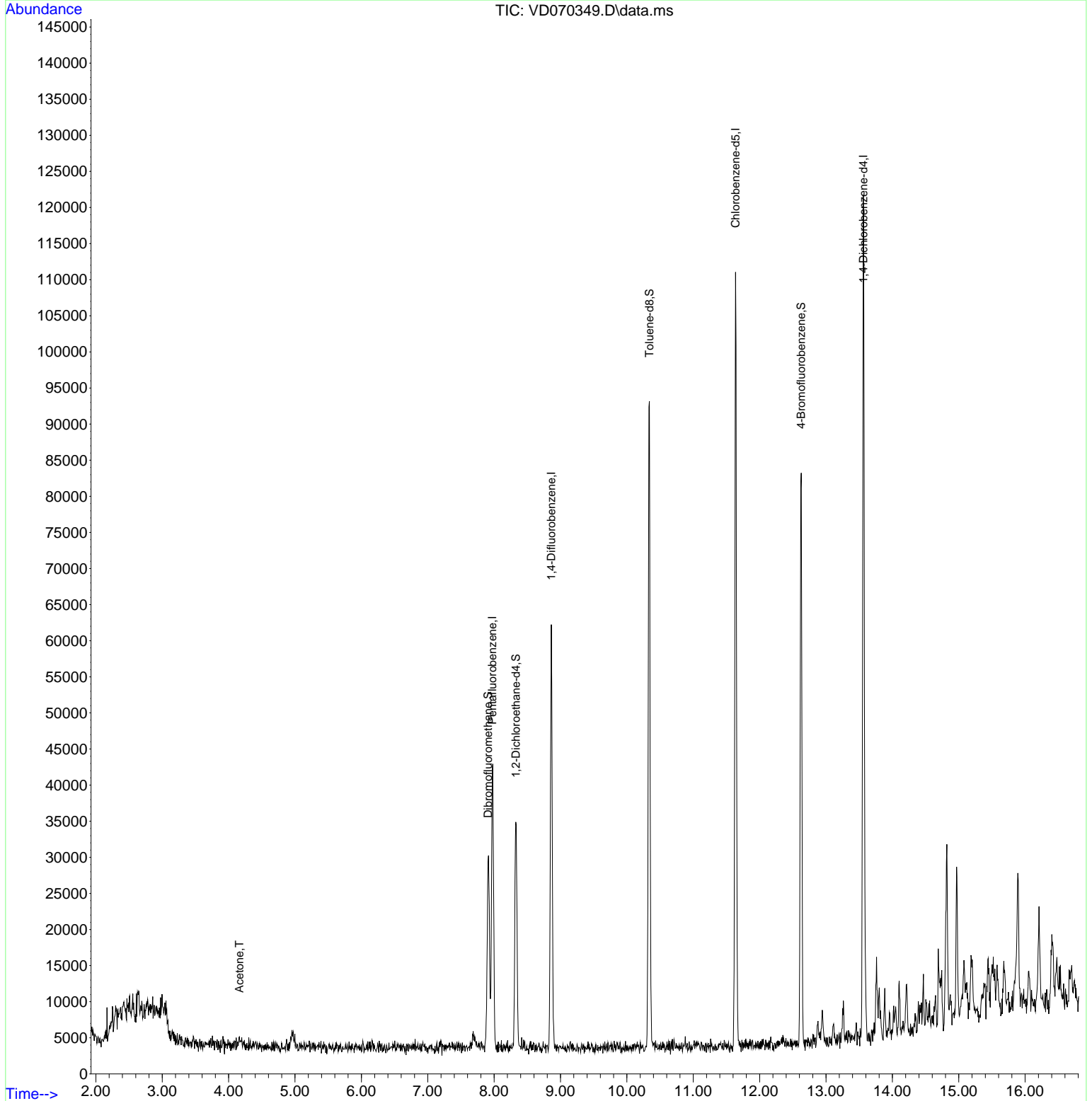
Internal Standards						
1) Pentafluorobenzene	7.973	168	28299	50.000	ug/l	0.00
34) 1,4-Difluorobenzene	8.861	114	47080	50.000	ug/l	0.00
63) Chlorobenzene-d5	11.638	117	64892	50.000	ug/l	0.00
72) 1,4-Dichlorobenzene-d4	13.561	152	31024	50.000	ug/l	0.00
System Monitoring Compounds						
33) 1,2-Dichloroethane-d4	8.326	65	25462	70.073	ug/l	0.00
Spiked Amount	50.000	Range	50 - 163	Recovery	=	140.140%
35) Dibromofluoromethane	7.909	113	20323	60.644	ug/l	0.00
Spiked Amount	50.000	Range	54 - 147	Recovery	=	121.280%
50) Toluene-d8	10.338	98	64425	52.949	ug/l	0.00
Spiked Amount	50.000	Range	49 - 140	Recovery	=	105.900%
62) 4-Bromofluorobenzene	12.626	95	29072	68.367	ug/l	0.00
Spiked Amount	50.000	Range	25 - 144	Recovery	=	136.740%
Target Compounds						
16) Acetone	4.162	43	1968	30.336	ug/l #	81

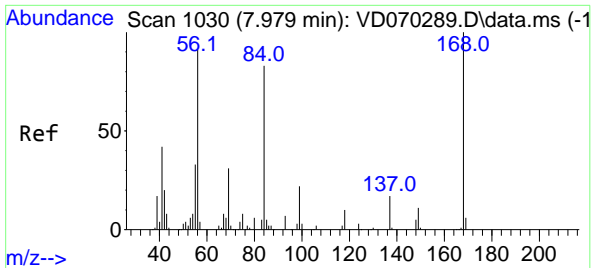
(#) = qualifier out of range (m) = manual integration (+) = signals summed

Data Path : Z:\voasrv\HPCHEM1\MSVOA_D\Data\VD091421\
 Data File : VD070349.D
 Acq On : 14 Sep 2021 13:14
 Operator : VA/SY
 Sample : M3718-01RE
 Misc : 5.09G/5.00ml/MSVOA_D/SOIL
 ALS Vial : 9 Sample Multiplier: 1

Instrument :
 MSVOA_D
 ClientSampleId :
 OR-03-091021RE

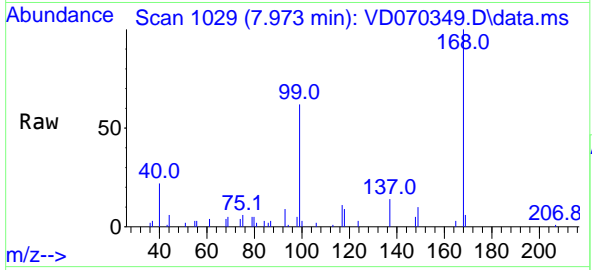
Quant Time: Sep 15 02:45:50 2021
 Quant Method : Z:\voasrv\HPCHEM1\MSVOA_D\Method\82D090821S.M
 Quant Title : SW846 8260
 QLast Update : Thu Sep 09 03:07:09 2021
 Response via : Initial Calibration



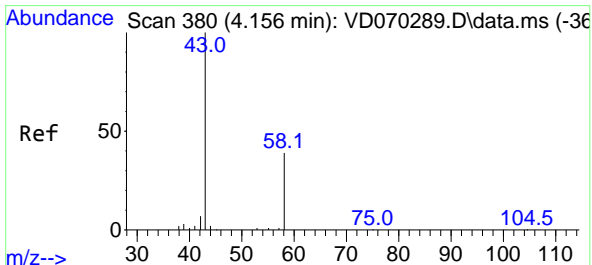
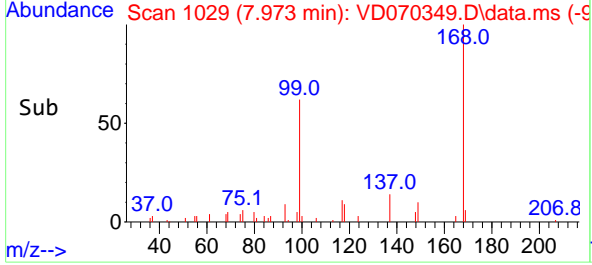
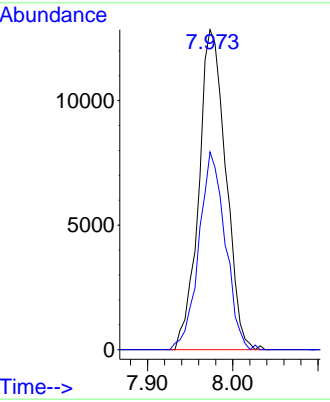


#1
 Pentafluorobenzene
 Concen: 50.000 ug/l
 RT: 7.973 min Scan# 1029
 Delta R.T. -0.006 min
 Lab File: VD070349.D
 Acq: 14 Sep 2021 13:14

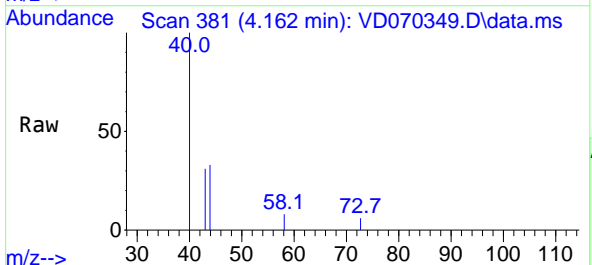
Instrument :
 MSVOA_D
ClientSampled :
 OR-03-091021RE



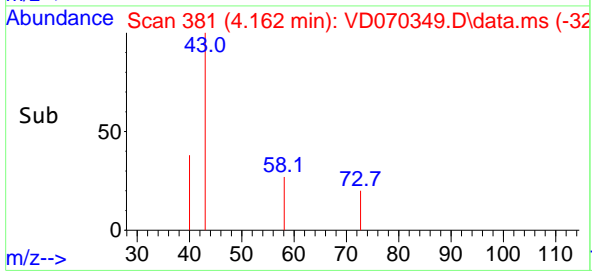
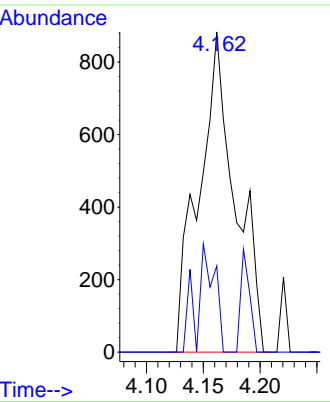
Tgt Ion:168 Resp: 28299
 Ion Ratio Lower Upper
 168 100
 99 61.8 50.8 76.2

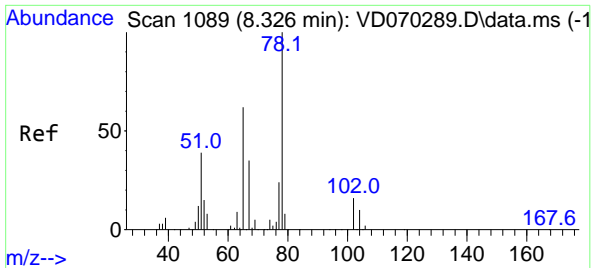


#16
 Acetone
 Concen: 30.336 ug/l
 RT: 4.162 min Scan# 381
 Delta R.T. 0.006 min
 Lab File: VD070349.D
 Acq: 14 Sep 2021 13:14



Tgt Ion: 43 Resp: 1968
 Ion Ratio Lower Upper
 43 100
 58 27.0 30.9 46.3#

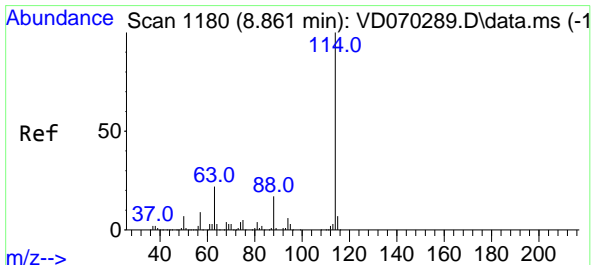
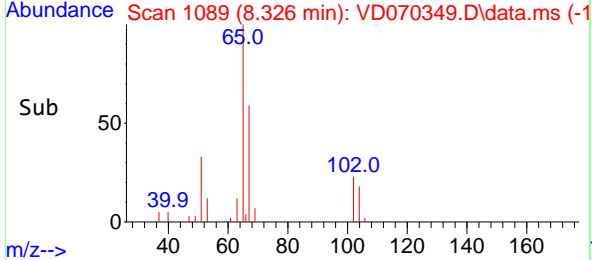
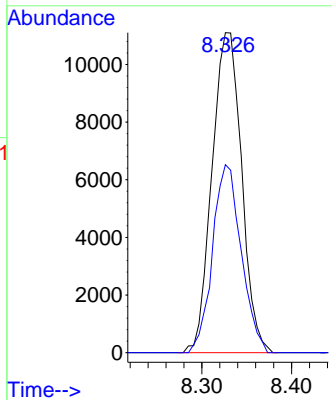
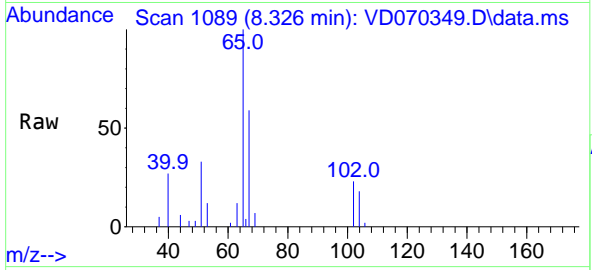




#33
 1,2-Dichloroethane-d4
 Concen: 70.073 ug/l
 RT: 8.326 min Scan# 1089
 Delta R.T. 0.000 min
 Lab File: VD070349.D
 Acq: 14 Sep 2021 13:14

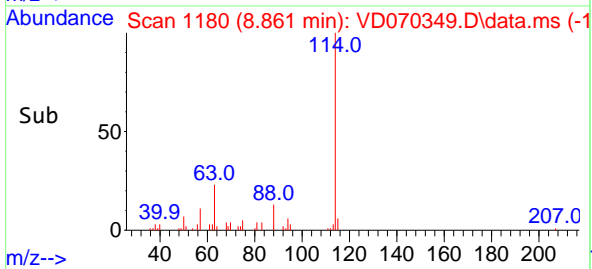
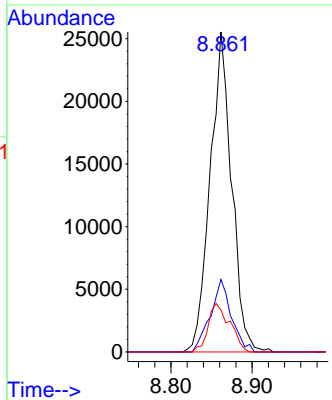
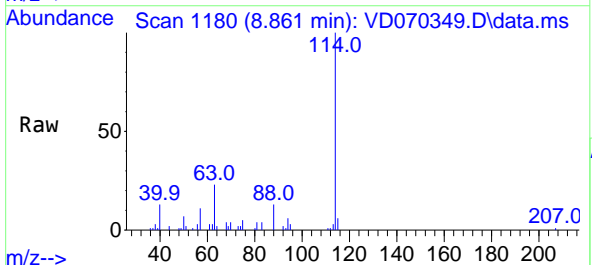
Instrument :
 MSVOA_D
Client Sampled :
 OR-03-091021RE

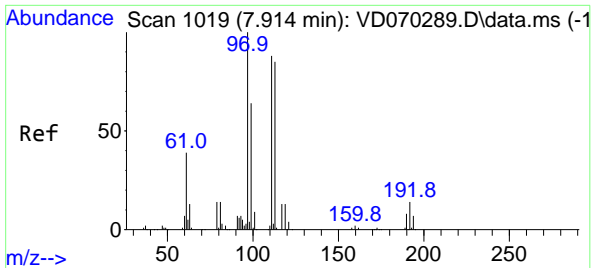
Tgt Ion: 65 Resp: 25462
 Ion Ratio Lower Upper
 65 100
 67 56.8 0.0 111.4



#34
 1,4-Difluorobenzene
 Concen: 50.000 ug/l
 RT: 8.861 min Scan# 1180
 Delta R.T. 0.000 min
 Lab File: VD070349.D
 Acq: 14 Sep 2021 13:14

Tgt Ion: 114 Resp: 47080
 Ion Ratio Lower Upper
 114 100
 63 22.7 0.0 43.4
 88 13.2 0.0 33.4



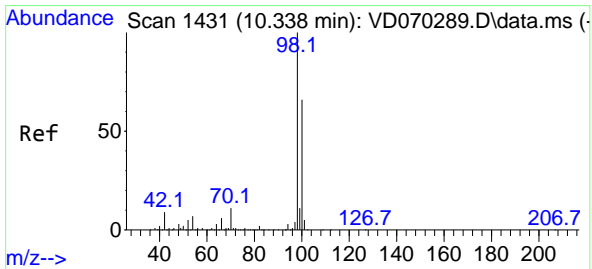
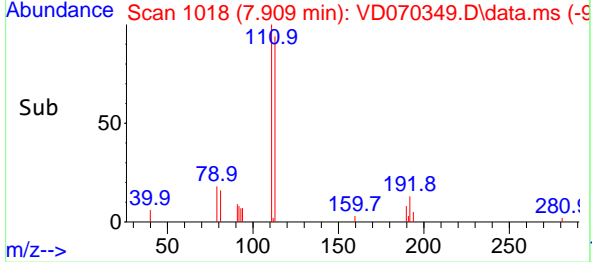
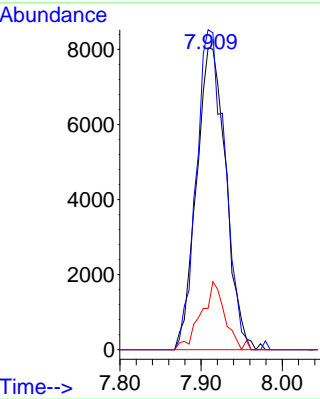
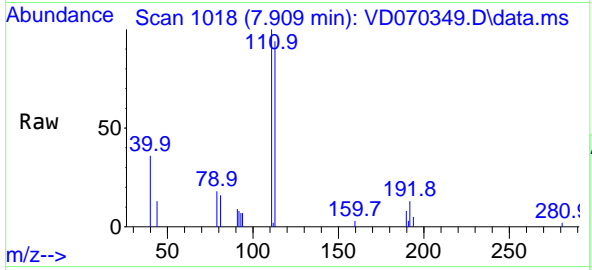


#35
 Dibromofluoromethane
 Concen: 60.644 ug/l
 RT: 7.909 min Scan# 1018
 Delta R.T. -0.006 min
 Lab File: VD070349.D
 Acq: 14 Sep 2021 13:14

Instrument :
 MSVOA_D
 ClientSampleId :
 OR-03-091021RE

Tgt Ion:113 Resp: 20323

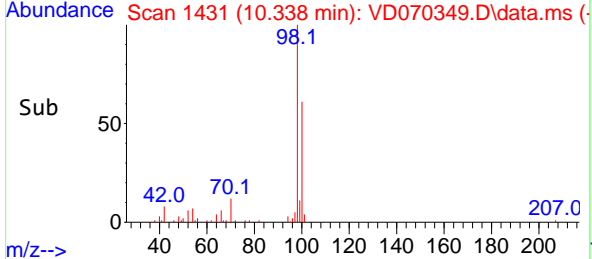
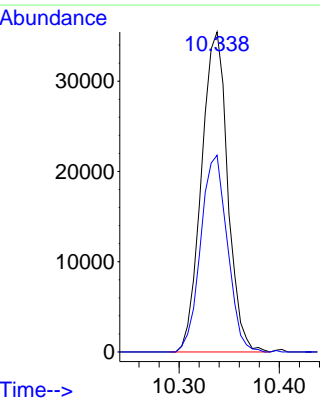
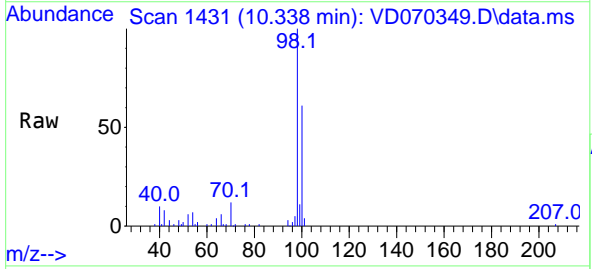
Ion	Ratio	Lower	Upper
113	100		
111	102.2	81.4	122.2
192	18.2	13.0	19.6

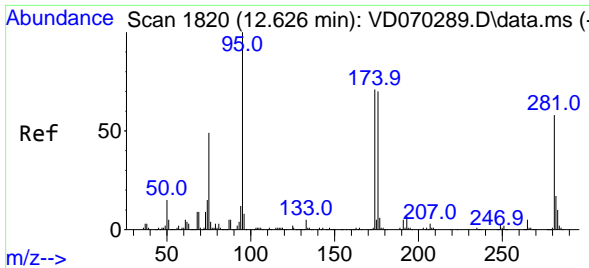


#50
 Toluene-d8
 Concen: 52.949 ug/l
 RT: 10.338 min Scan# 1431
 Delta R.T. 0.000 min
 Lab File: VD070349.D
 Acq: 14 Sep 2021 13:14

Tgt Ion: 98 Resp: 64425

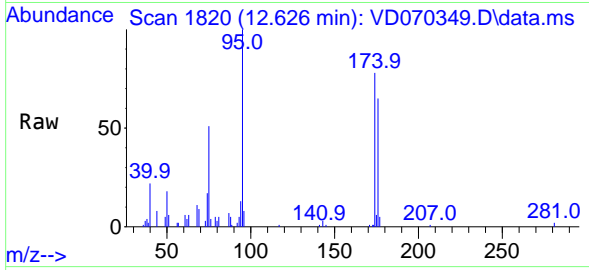
Ion	Ratio	Lower	Upper
98	100		
100	62.5	52.0	78.0



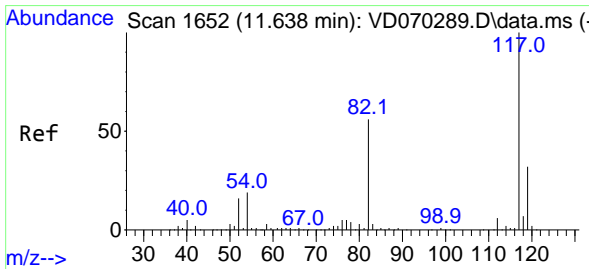
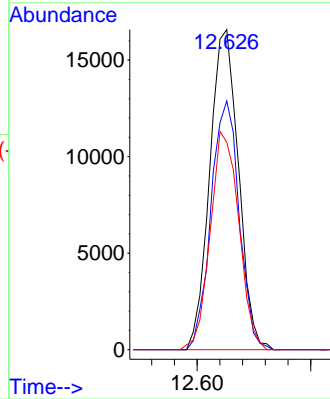
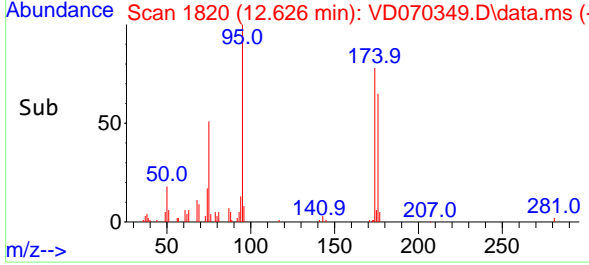


#62
 4-Bromofluorobenzene
 Concen: 68.367 ug/l
 RT: 12.626 min Scan# 1820
 Delta R.T. 0.000 min
 Lab File: VD070349.D
 Acq: 14 Sep 2021 13:14

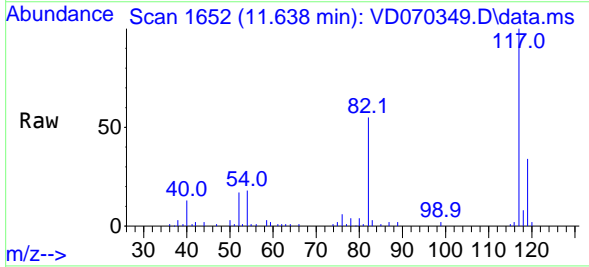
Instrument :
 MSVOA_D
ClientSampleId :
 OR-03-091021RE



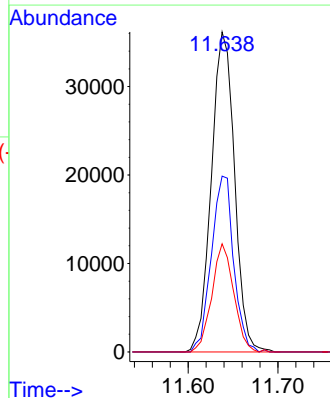
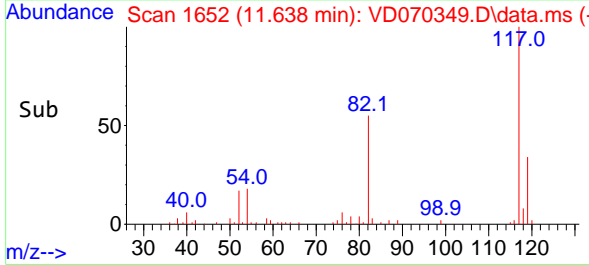
Tgt Ion: 95 Resp: 29072
 Ion Ratio Lower Upper
 95 100
 174 76.3 0.0 140.6
 176 67.7 0.0 137.4

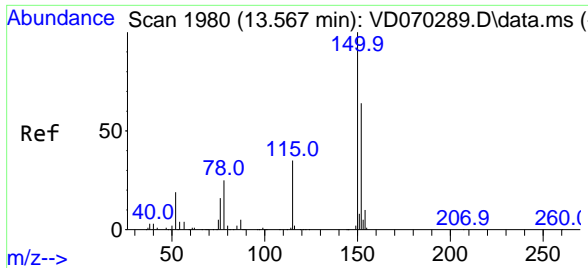


#63
 Chlorobenzene-d5
 Concen: 50.000 ug/l
 RT: 11.638 min Scan# 1652
 Delta R.T. 0.000 min
 Lab File: VD070349.D
 Acq: 14 Sep 2021 13:14



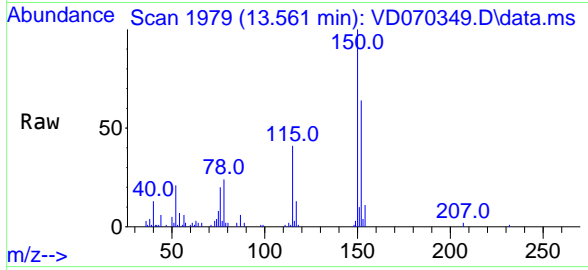
Tgt Ion: 117 Resp: 64892
 Ion Ratio Lower Upper
 117 100
 82 54.9 45.0 67.4
 119 33.8 25.2 37.8





#72
 1,4-Dichlorobenzene-d4
 Concen: 50.000 ug/l
 RT: 13.561 min Scan# 1979
 Delta R.T. -0.006 min
 Lab File: VD070349.D
 Acq: 14 Sep 2021 13:14

Instrument :
 MSVOA_D
 ClientSampled :
 OR-03-091021RE



Tgt Ion:152 Resp: 31024

Ion	Ratio	Lower	Upper
152	100		
115	59.3	32.1	96.3
150	159.6	0.0	350.6

