

Data Path : Z:\VOASRV\HPCHEM1\MSVOA D\DATA\VD091520\
 Data File : VD066702.D
 Acq On : 15 Sep 2020 17:59
 Operator : VA/SY
 Sample : VD0915SBL01
 Misc : 5.00G/5.00ml/MSVOA D/SOIL
 ALS Vial : 13 Sample Multiplier: 1

Instrument :
 MSVOA_D
 ClientSampleId :
 VD0915SBL01

Integration Parameters: RTEINT.P

Integrator: RTE
 Smoothing : ON
 Sampling : 1
 Start Thrs: 0.2
 Stop Thrs : 0

Filtering: 5
 Min Area: 3 % of largest Peak
 Max Peaks: 100
 Peak Location: TOP

If leading or trailing edge < 100 prefer < Baseline drop else tangent >
 Peak separation: 5

Method : Z:\VOASRV\HPCHEM1\MSVOA_D\METHOD\82D091520S.M
 Title : SW846 8260

Signal : TIC

peak #	R.T. min	first scan	max scan	last scan	PK TY	peak height	corr. area	corr. % max.	% of total
1	3.403	246	252	261	rVB6	11335	28850	1.49%	0.238%
2	4.962	506	517	528	rBV5	29011	110483	5.69%	0.910%
3	7.197	887	897	909	rBV	60164	180303	9.29%	1.485%
4	7.714	977	985	990	rBV6	7076	20974	1.08%	0.173%
5	7.914	1009	1019	1024	rBV2	298993	730932	37.64%	6.019%
6	7.979	1024	1030	1040	rVB	528774	1186770	61.12%	9.772%
7	8.326	1074	1089	1099	rBV2	294764	774200	39.87%	6.375%
8	8.861	1170	1180	1195	rBV	764301	1587996	81.79%	13.076%
9	9.355	1253	1264	1275	rBV8	13361	40010	2.06%	0.329%
10	9.908	1349	1358	1366	rBV5	13734	32177	1.66%	0.265%
11	10.338	1423	1431	1439	rBV	1072122	1941649	100.00%	15.988%
12	10.397	1439	1441	1447	rVB3	15071	22317	1.15%	0.184%
13	10.720	1487	1496	1503	rBV2	100822	187811	9.67%	1.547%
14	10.867	1514	1521	1528	rBV8	19303	41163	2.12%	0.339%
15	11.085	1551	1558	1564	rBV3	42057	78050	4.02%	0.643%
16	11.191	1572	1576	1581	rVB5	15282	23348	1.20%	0.192%
17	11.461	1617	1622	1628	rVB2	16980	28164	1.45%	0.232%
18	11.644	1644	1653	1666	rBV	1117154	1920583	98.92%	15.815%
19	11.744	1666	1670	1677	rVB5	16889	29746	1.53%	0.245%
20	11.844	1682	1687	1697	rVB4	16582	34901	1.80%	0.287%
21	12.185	1737	1745	1751	rBV6	15561	33106	1.71%	0.273%
22	12.479	1788	1795	1800	rBV4	15322	27739	1.43%	0.228%
23	12.632	1813	1821	1831	rBV	808553	1290276	66.45%	10.625%
24	12.955	1872	1876	1880	rVV4	19413	32134	1.65%	0.265%
25	13.520	1963	1972	1975	rBV7	21128	40856	2.10%	0.336%
26	13.579	1975	1982	1990	rVB	991235	1679227	86.48%	13.828%
27	14.102	2063	2071	2078	rVB4	20925	40334	2.08%	0.332%

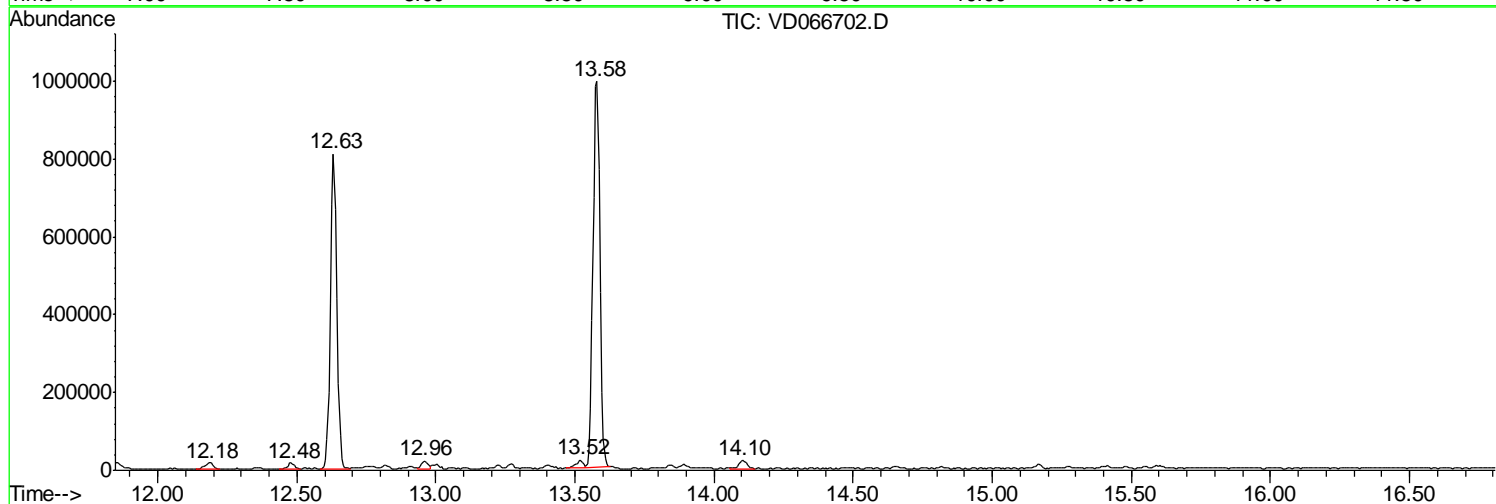
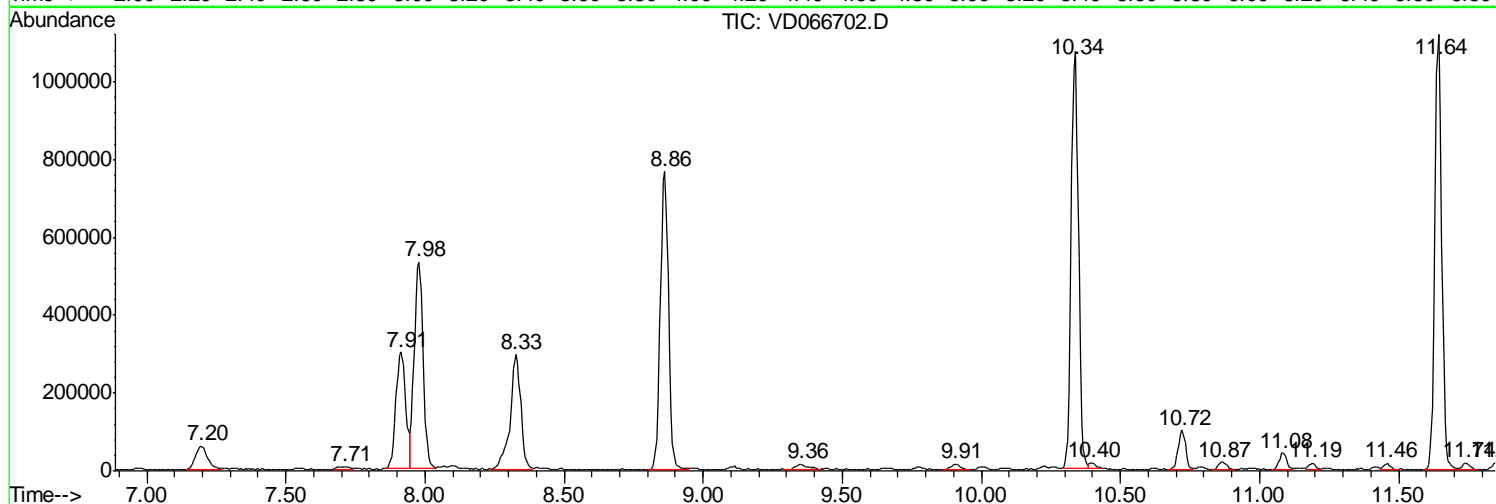
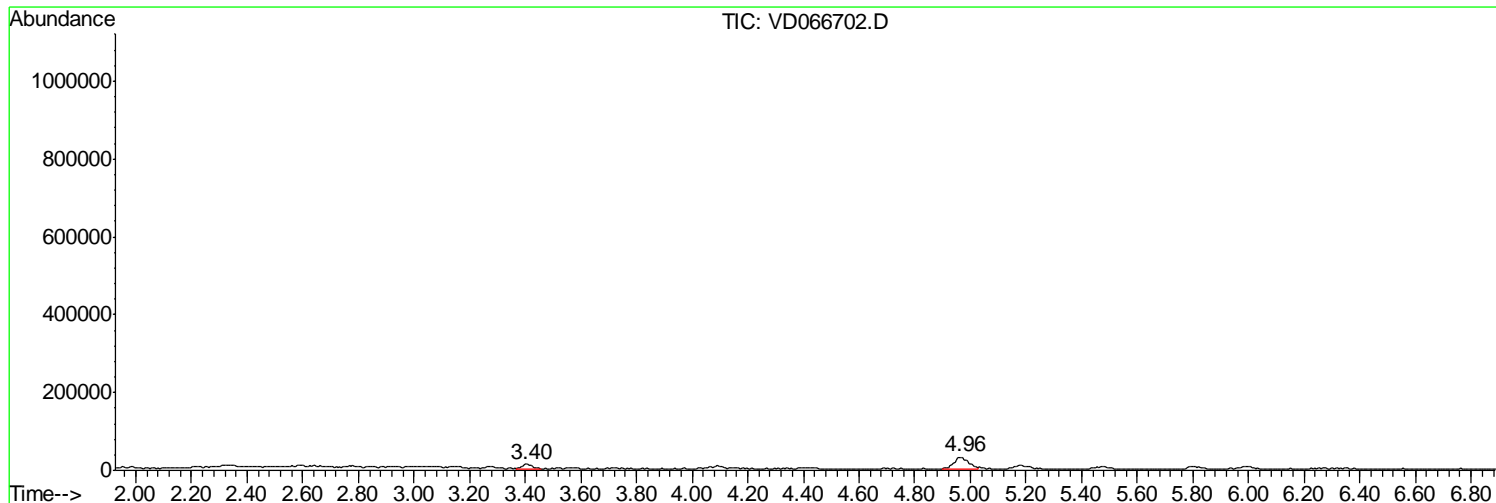
Sum of corrected areas: 12144099

Data Path : Z:\VOASRV\HPCHEM1\MSVOA D\DATA\VD091520\
Data File : VD066702.D
Acq On : 15 Sep 2020 17:59
Operator : VA/SY
Sample : VD0915SBL01
Misc : 5.00G/5.00ml/MSVOA D/SOIL
ALS Vial : 13 Sample Multiplier: 1

Instrument :
MSVOA_D
ClientSampleId :
VD0915SBL01

Quant Method : Z:\VOASRV\HPCHEM1\MSVOA_D\METHOD\82D091520S.M
Quant Title : SW846 8260

TIC Library : C:\DATABASE\NIST11.L
TIC Integration Parameters: LSCINT.P



Data Path : Z:\VOASRV\HPCHEM1\MSVOA_D\DATA\VD091520\
Data File : VD066702.D
Acq On : 15 Sep 2020 17:59
Operator : VA/SY
Sample : VD0915SBL01
Misc : 5.00G/5.00ml/MSVOA_D/SOIL
ALS Vial : 13 Sample Multiplier: 1

Instrument :
MSVOA_D
ClientSampleId :
VD0915SBL01

Quant Method : Z:\VOASRV\HPCHEM1\MSVOA_D\METHOD\82D091520S.M
Quant Title : SW846 8260

TIC Library : C:\DATABASE\NIST11.L
TIC Integration Parameters: LSCINT.P

No Library Search Compounds Detected

Data Path : Z:\VOASRV\HPCHEM1\MSVOA_D\DATA\VD091520\
Data File : VD066702.D
Acq On : 15 Sep 2020 17:59
Operator : VA/SY
Sample : VD0915SBL01
Misc : 5.00G/5.00ml/MSVOA_D/SOIL
ALS Vial : 13 Sample Multiplier: 1

Instrument :
MSVOA_D
ClientSampleId :
VD0915SBL01

Quant Method : Z:\VOASRV\HPCHEM1\MSVOA_D\METHOD\82D091520S.M
Quant Title : SW846 8260

TIC Library : C:\DATABASE\NIST11.L
TIC Integration Parameters: LSCINT.P

TIC Top Hit name	RT	EstConc	Units	Response	--Internal Standard--			
					#	RT	Resp	Conc
