

Data Path : Z:\VOASRV\HPCHEM1\MSVOA D\DATA\VD091720\
 Data File : VD066749.D
 Acq On : 17 Sep 2020 17:23
 Operator : VA/SY
 Sample : L4062-04
 Misc : 3.21G/5.00ml/MSVOA D/SOIL
 ALS Vial : 17 Sample Multiplier: 1

Instrument :
 MSVOA_D
 ClientSampled :
 EROC-NI4-2

Integration Parameters: RTEINT.P

Integrator: RTE
 Smoothing : ON
 Sampling : 1
 Start Thrs: 0.2
 Stop Thrs : 0

Filtering: 5
 Min Area: 3 % of largest Peak
 Max Peaks: 100
 Peak Location: TOP

If leading or trailing edge < 100 prefer < Baseline drop else tangent >
 Peak separation: 5

Method : Z:\VOASRV\HPCHEM1\MSVOA_D\METHOD\82D091520S.M
 Title : SW846 8260

Signal : TIC

peak #	R.T. min	first scan	max scan	last scan	PK TY	peak height	corr. area	corr. % max.	% of total
1	4.962	504	517	533	rVB3	44005	154741	6.71%	1.007%
2	5.991	690	692	703	rVB3	14479	26541	1.15%	0.173%
3	7.191	888	896	909	rBV	31180	92494	4.01%	0.602%
4	7.914	1008	1019	1024	rBV2	331631	792147	34.34%	5.156%
5	7.973	1024	1029	1042	rVB	538668	1221670	52.96%	7.951%
6	8.332	1073	1090	1102	rBV	289996	694347	30.10%	4.519%
7	8.861	1171	1180	1192	rBV	850428	1672518	72.50%	10.885%
8	9.044	1206	1211	1220	rBV6	15771	31796	1.38%	0.207%
9	9.514	1285	1291	1301	rVB	18516	35637	1.54%	0.232%
10	10.338	1423	1431	1439	rBV	1272629	2306763	100.00%	15.013%
11	10.726	1490	1497	1503	rVB	57552	116031	5.03%	0.755%
12	11.085	1552	1558	1563	rBV3	34437	56864	2.47%	0.370%
13	11.644	1643	1653	1661	rBV	1223446	2135390	92.57%	13.898%
14	11.714	1661	1665	1675	rVB4	23900	46568	2.02%	0.303%
15	11.891	1690	1695	1702	rVB3	25656	46962	2.04%	0.306%
16	12.085	1723	1728	1737	rBV7	18659	40294	1.75%	0.262%
17	12.255	1752	1757	1764	rBV	30949	53744	2.33%	0.350%
18	12.632	1810	1821	1828	rBV2	1052883	2288653	99.21%	14.895%
19	12.702	1828	1833	1840	rVV3	41380	110414	4.79%	0.719%
20	12.773	1840	1845	1856	rVB3	103955	249312	10.81%	1.623%
21	12.985	1871	1881	1886	rBV4	62727	159590	6.92%	1.039%
22	13.032	1886	1889	1898	rVB5	22319	43083	1.87%	0.280%
23	13.126	1898	1905	1906	rBV4	21776	36316	1.57%	0.236%
24	13.214	1911	1920	1933	rVB	114212	234182	10.15%	1.524%
25	13.326	1933	1939	1945	rBV	57231	96149	4.17%	0.626%
26	13.432	1948	1957	1962	rBV2	73103	131052	5.68%	0.853%
27	13.491	1962	1967	1972	rBV7	13914	26819	1.16%	0.175%
28	13.579	1972	1982	1988	rBV	1231853	2077041	90.04%	13.518%
29	13.626	1988	1990	1999	rVB4	52626	101960	4.42%	0.664%
30	13.785	2013	2017	2020	rBV6	14106	24800	1.08%	0.161%
31	13.855	2024	2029	2033	rVV7	17104	37719	1.64%	0.245%
32	13.908	2033	2038	2045	rVV7	24388	76703	3.33%	0.499%
33	13.967	2045	2048	2054	rVB5	20131	29481	1.28%	0.192%
34	14.108	2066	2072	2086	rVB9	36910	117145	5.08%	0.762%

Data Path : Z:\VOASRV\HPCHEM1\MSVOA D\DATA\VD091720\
Data File : VD066749.D
Acq On : 17 Sep 2020 17:23
Operator : VA/SY
Sample : L4062-04
Misc : 3.21G/5.00ml/MSVOA D/SOIL
ALS Vial : 17 Sample Multiplier: 1

Instrument :
MSVOA_D
ClientSampleId :
EROC-NI4-2

Integration Parameters: RTEINT.P
Integrator: RTE
Smoothing : ON Filtering: 5
Sampling : 1 Min Area: 3 % of largest Peak
Start Thrs: 0.2 Max Peaks: 100
Stop Thrs : 0 Peak Location: TOP

If leading or trailing edge < 100 prefer < Baseline drop else tangent >
Peak separation: 5

Method : Z:\VOASRV\HPCHEM1\MSVOA_D\METHOD\82D091520S.M
Title : SW846 8260

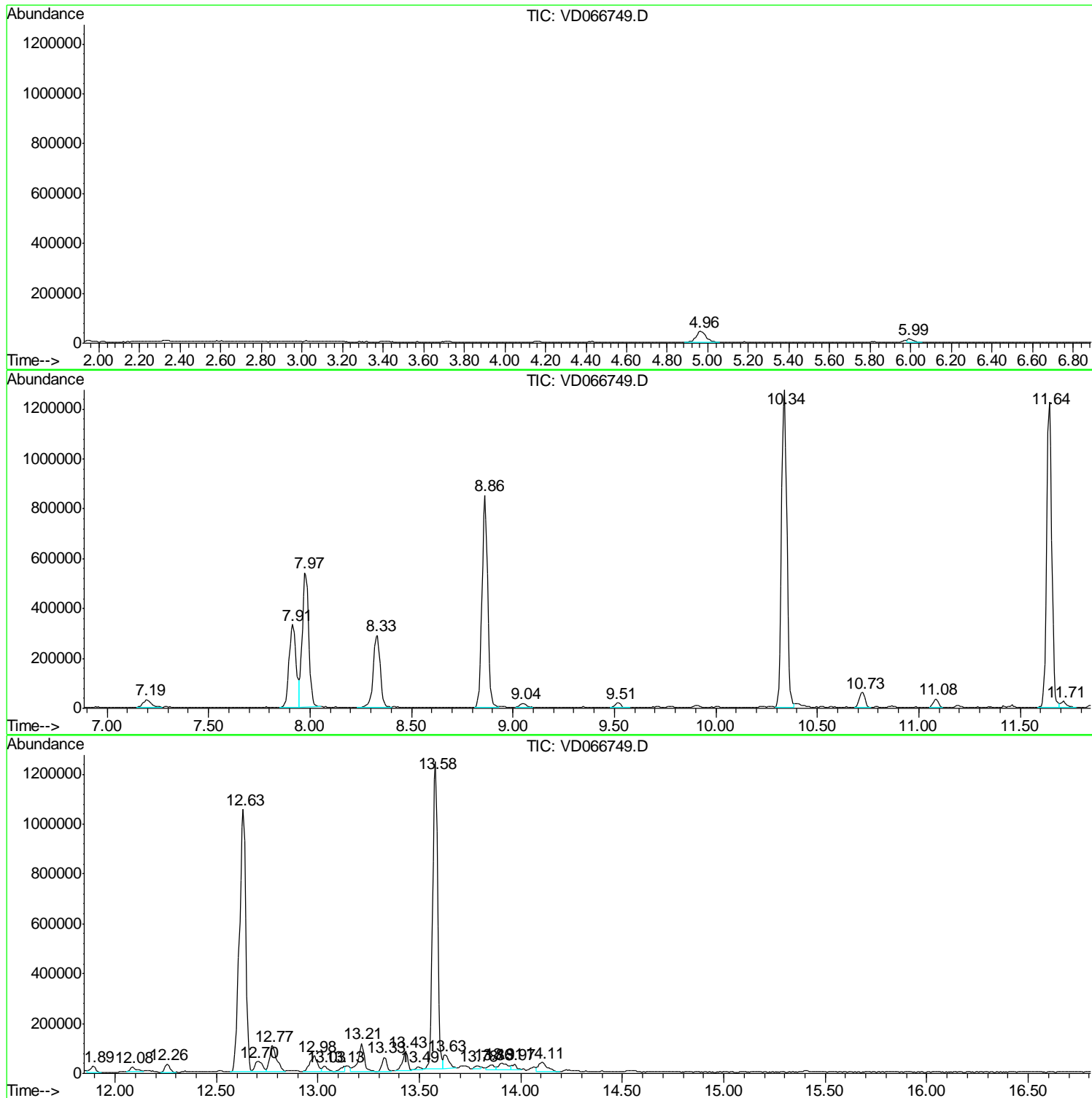
Sum of corrected areas: 15364926

Data Path : Z:\VOASRV\HPCHEM1\MSVOA D\DATA\VD091720\
 Data File : VD066749.D
 Acq On : 17 Sep 2020 17:23
 Operator : VA/SY
 Sample : L4062-04
 Misc : 3.21G/5.00ml/MSVOA D/SOIL
 ALS Vial : 17 Sample Multiplier: 1

Instrument :
 MSVOA_D
 ClientSampleId :
 EROC-NI4-2

Quant Method : Z:\VOASRV\HPCHEM1\MSVOA_D\METHOD\82D091520S.M
 Quant Title : SW846 8260

TIC Library : C:\DATABASE\NIST11.L
 TIC Integration Parameters: LSCINT.P



Data Path : Z:\VOASRV\HPCHEM1\MSVOA D\DATA\VD091720\
 Data File : VD066749.D
 Acq On : 17 Sep 2020 17:23
 Operator : VA/SY
 Sample : L4062-04
 Misc : 3.21G/5.00ml/MSVOA D/SOIL
 ALS Vial : 17 Sample Multiplier: 1

Instrument :
 MSVOA_D
 ClientSampleID :
 EROC-NI4-2

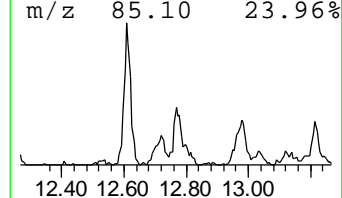
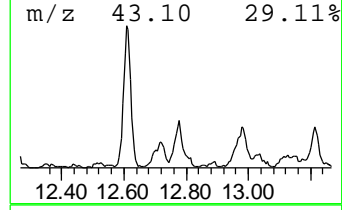
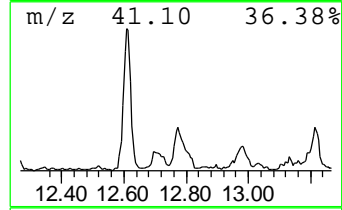
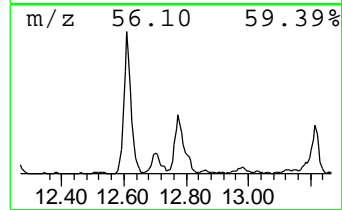
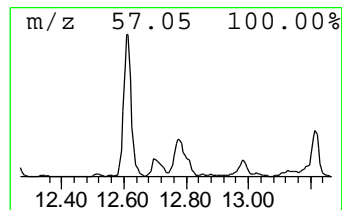
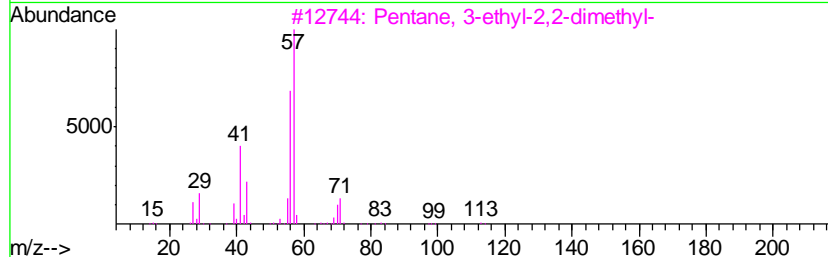
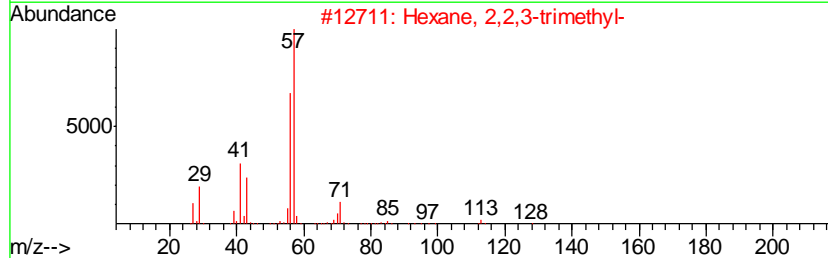
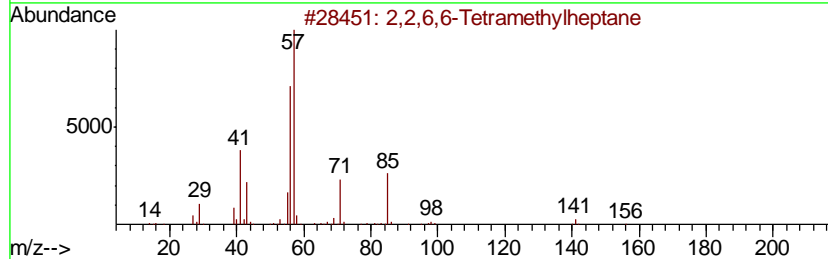
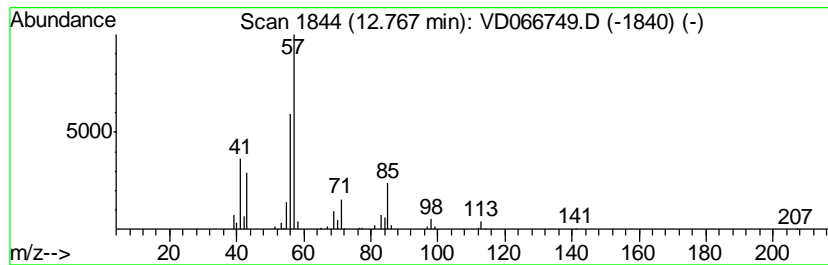
Quant Method : Z:\VOASRV\HPCHEM1\MSVOA_D\METHOD\82D091520S.M
 Quant Title : SW846 8260

TIC Library : C:\DATABASE\NIST11.L
 TIC Integration Parameters: LSCINT.P

 Peak Number 2 2,2,6,6-Tetramethylheptane Concentration Rank 2

R.T.	EstConc	Area	Relative to ISTD	R.T.
12.77	6.00 ug/l	249312	1,4-Dichlorobenzene-d4	13.58

Hit#	of	Tentative ID	MW	MolForm	CAS#	Qual
1	5	2,2,6,6-Tetramethylheptane	156	C11H24	040117-45-1	59
2		Hexane, 2,2,3-trimethyl-	128	C9H20	016747-25-4	53
3		Pentane, 3-ethyl-2,2-dimethyl-	128	C9H20	016747-32-3	50
4		Hexane, 3,4-dimethyl-	114	C8H18	000583-48-2	47
5		Heptane, 3,5-dimethyl-	128	C9H20	000926-82-9	43



Data Path : Z:\VOASRV\HPCHEM1\MSVOA D\DATA\VD091720\
 Data File : VD066749.D
 Acq On : 17 Sep 2020 17:23
 Operator : VA/SY
 Sample : L4062-04
 Misc : 3.21G/5.00ml/MSVOA D/SOIL
 ALS Vial : 17 Sample Multiplier: 1

Instrument :
 MSVOA_D
 ClientSampleID :
 EROC-NI4-2

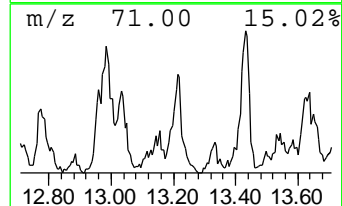
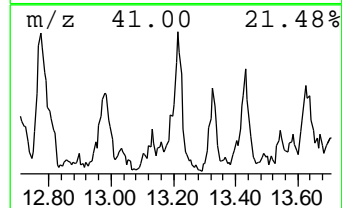
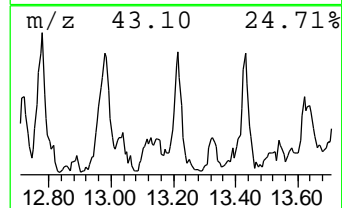
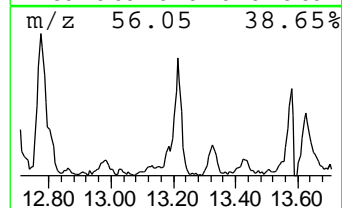
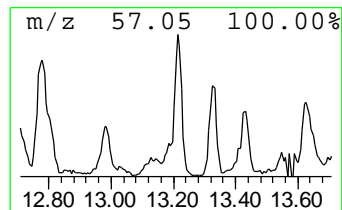
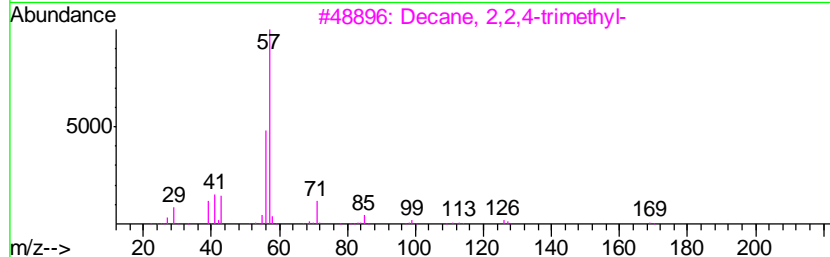
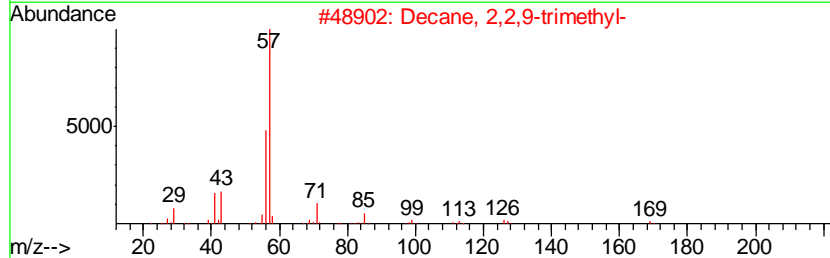
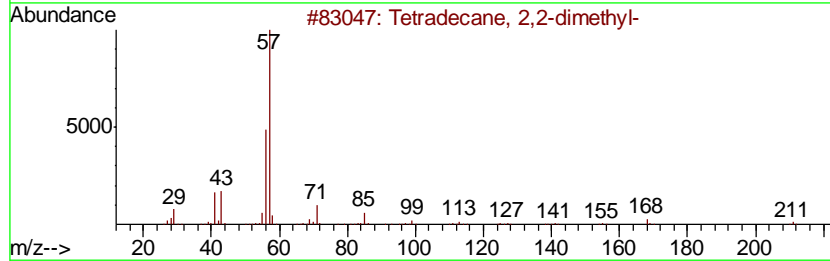
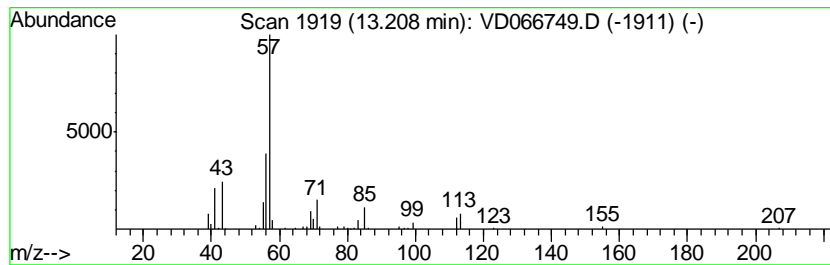
Quant Method : Z:\VOASRV\HPCHEM1\MSVOA_D\METHOD\82D091520S.M
 Quant Title : SW846 8260

TIC Library : C:\DATABASE\NIST11.L
 TIC Integration Parameters: LSCINT.P

 Peak Number 3 Tetradecane, 2,2-dimethyl- Concentration Rank 3

R.T.	EstConc	Area	Relative to ISTD	R.T.
13.21	5.64 ug/l	234182	1,4-Dichlorobenzene-d4	13.58

Hit#	of	Tentative ID	MW	MolForm	CAS#	Qual
1	5	Tetradecane, 2,2-dimethyl-	226	C16H34	059222-86-5	78
2		Decane, 2,2,9-trimethyl-	184	C13H28	062238-00-0	72
3		Decane, 2,2,4-trimethyl-	184	C13H28	062237-98-3	72
4		Undecane, 2,2-dimethyl-	184	C13H28	017312-64-0	72
5		Octane, 2,2,6-trimethyl-	156	C11H24	062016-28-8	64



Data Path : Z:\VOASRV\HPCHEM1\MSVOA_D\DATA\VD091720\
Data File : VD066749.D
Acq On : 17 Sep 2020 17:23
Operator : VA/SY
Sample : L4062-04
Misc : 3.21G/5.00ml/MSVOA_D/SOIL
ALS Vial : 17 Sample Multiplier: 1

Instrument :
MSVOA_D
ClientSampleId :
EROC-NI4-2

Quant Method : Z:\VOASRV\HPCHEM1\MSVOA_D\METHOD\82D091520S.M
Quant Title : SW846 8260

TIC Library : C:\DATABASE\NIST11.L
TIC Integration Parameters: LSCINT.P

TIC Top Hit name	RT	EstConc	Units	Response	--Internal Standard--			
					#	RT	Resp	Conc
2,2,6,6-Tetrameth...	12.77	6.0	ug/l	249312	4	13.58	2077040	50.0
Tetradecane, 2,2-...	13.21	5.6	ug/l	234182	4	13.58	2077040	50.0